



Pioneer Energy Services

Borehole Compensated Sonic Log

15-063-22,027-00-00

API No.

Company **Prospect Oil & Gas Corporation**
 Well **Brookover No. 28-2**
 Field
 County **Gove** State **Kansas**

Location **SE NE NE NW
480' FNL & 2,580' FWL**
 Sec: **28** Twp: **13S** Rge: **30W**

Permanent Datum **Ground Level** Elevation **2851**
 Log Measured From **Kelly Bushing** 5 Ft. Above Perm. Datum
 Drilling Measured From **Kelly Bushing**

Other Services
RAG
 Elevation
 K.B. 2856
 D.F.
 G.L. 2851

Date	8/25/2012	
Run Number	Two	
Type Log	BHC Sonic	
Depth Driller	4625	
Depth Logger	4623	
Bottom Logged Interval	4602	
Top Logged Interval	200	
Type Fluid In Hole	Chemical	
Salinity, PPM CL	2500	
Density	9.5	
Level	Full	
Max. Rec. Temp. F	122	
Operating Rig Time	4 Hours	
Equipment -- Location	108 Hays	
Recorded By	J. Long	
Witnessed By	Brad Hutchison	

Borehole Record			Casing Record				
Run No.	Bit	From	To	Size	Wgt.	From	To
1	12.25	00	212	8.625	24#	00	212
2	7.875	212	4625				

<<< Fold Here >>>

All interpretations are opinions based on inferences from electrical or other measurements and we cannot and do not guarantee the accuracy or correctness of any interpretation, and we shall not, except in the case of gross or willful negligence on our part, be liable or responsible for any loss, costs, damages, or expenses incurred or sustained by anyone resulting from any interpretation made by any of our officers, agents or employees. These interpretations are also subject to our general terms and conditions set out in our current Price Schedule.

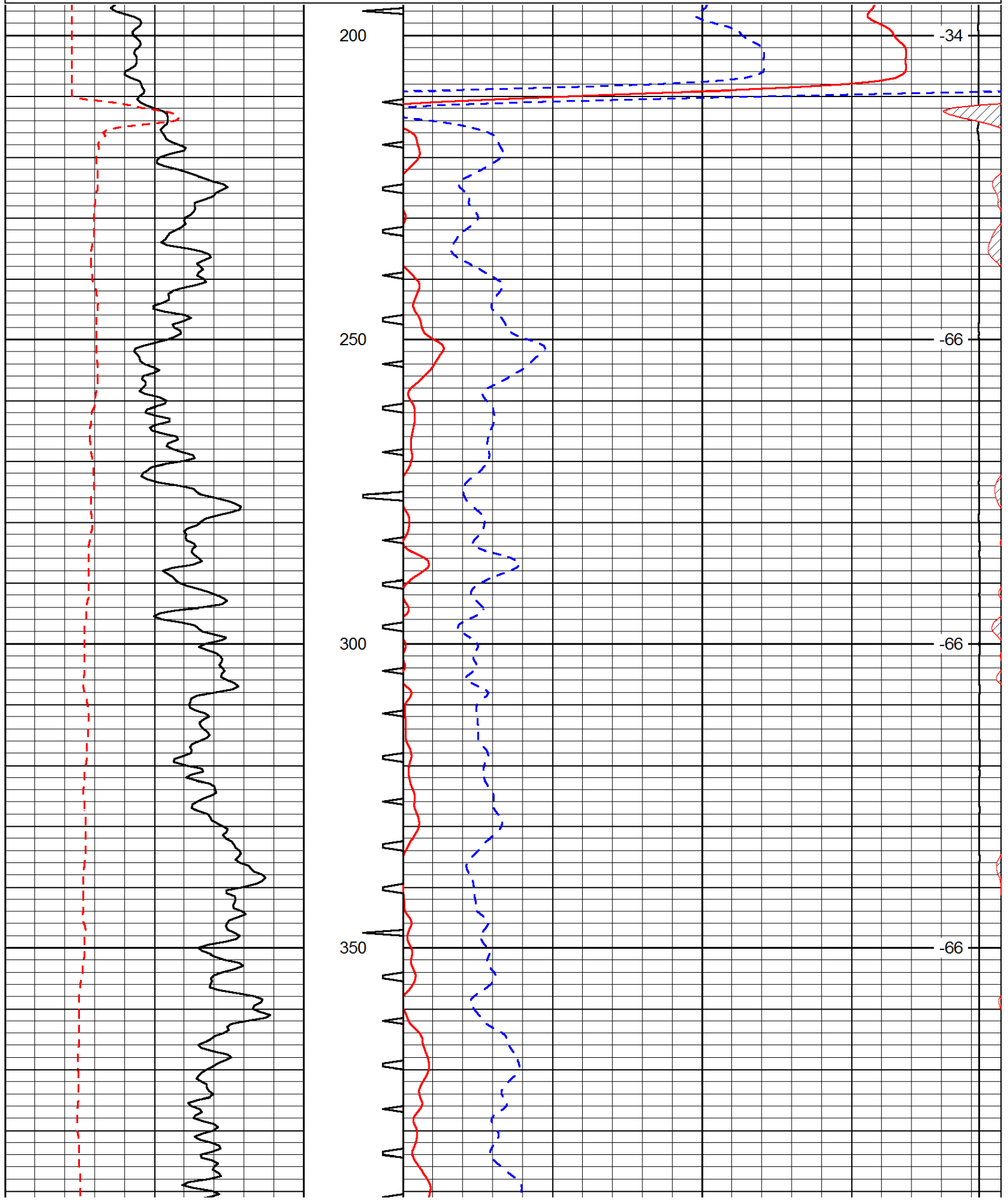
Comments

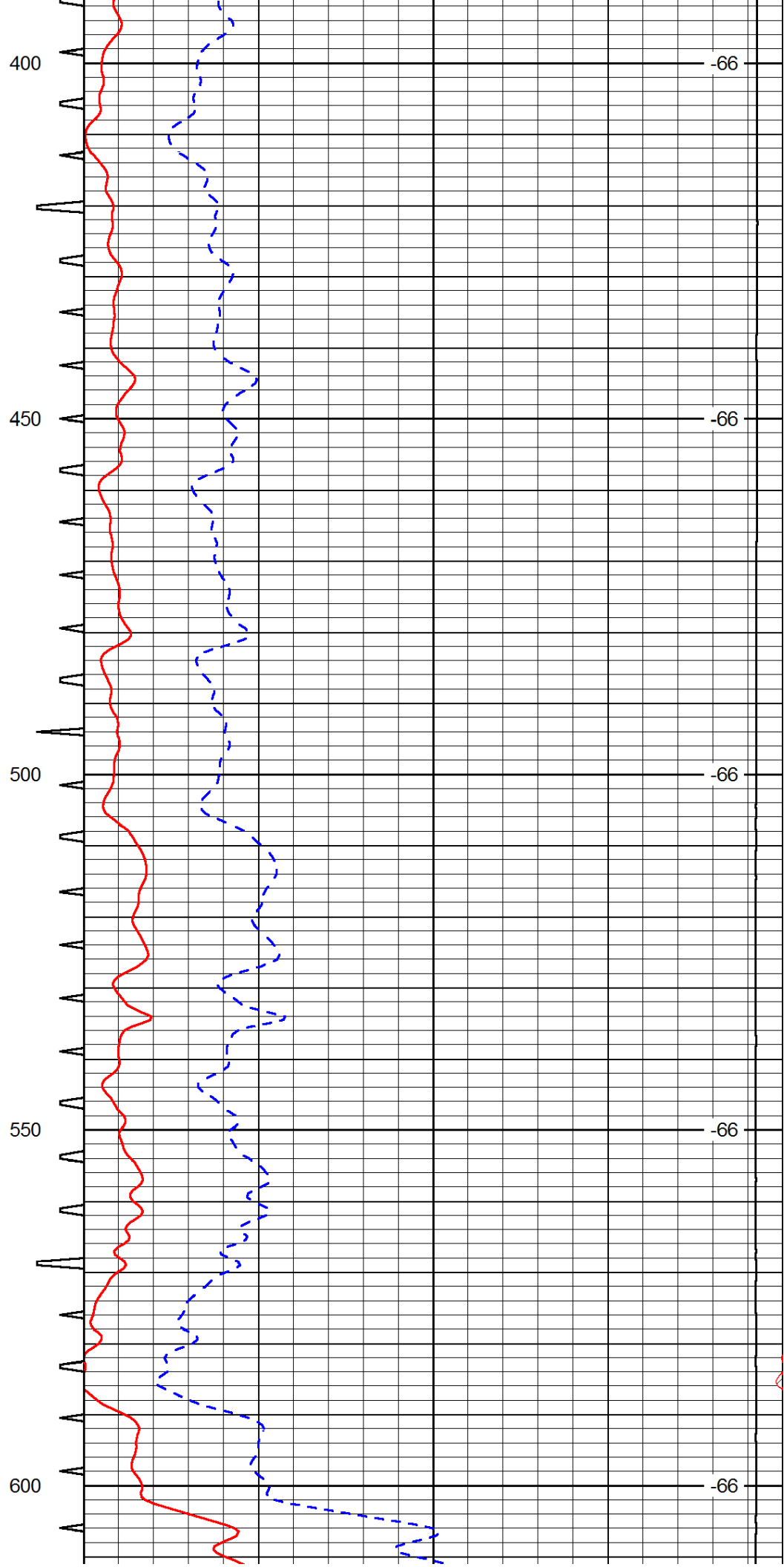
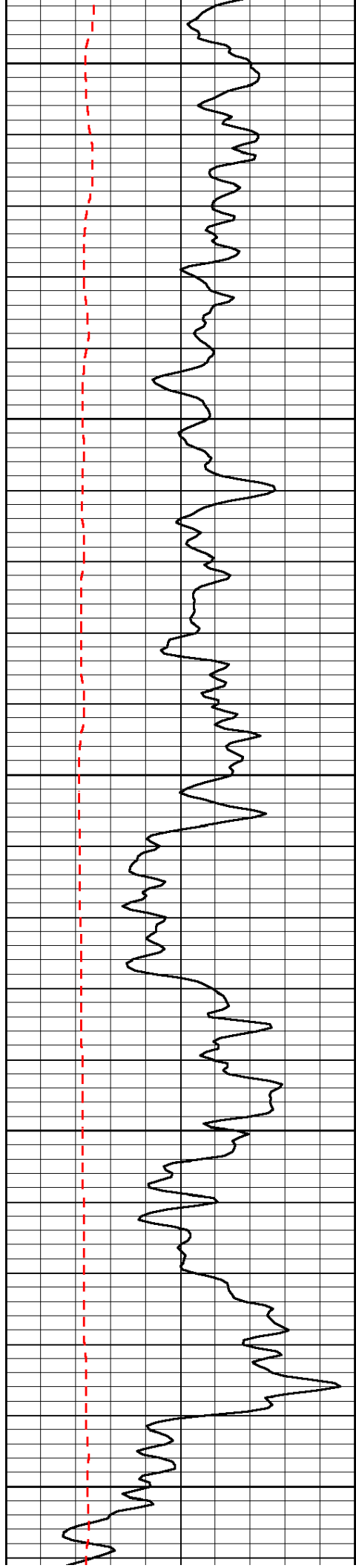
Thank you for using Pioneer Energy Services
 www.pioneerres.com
 785 625 3858

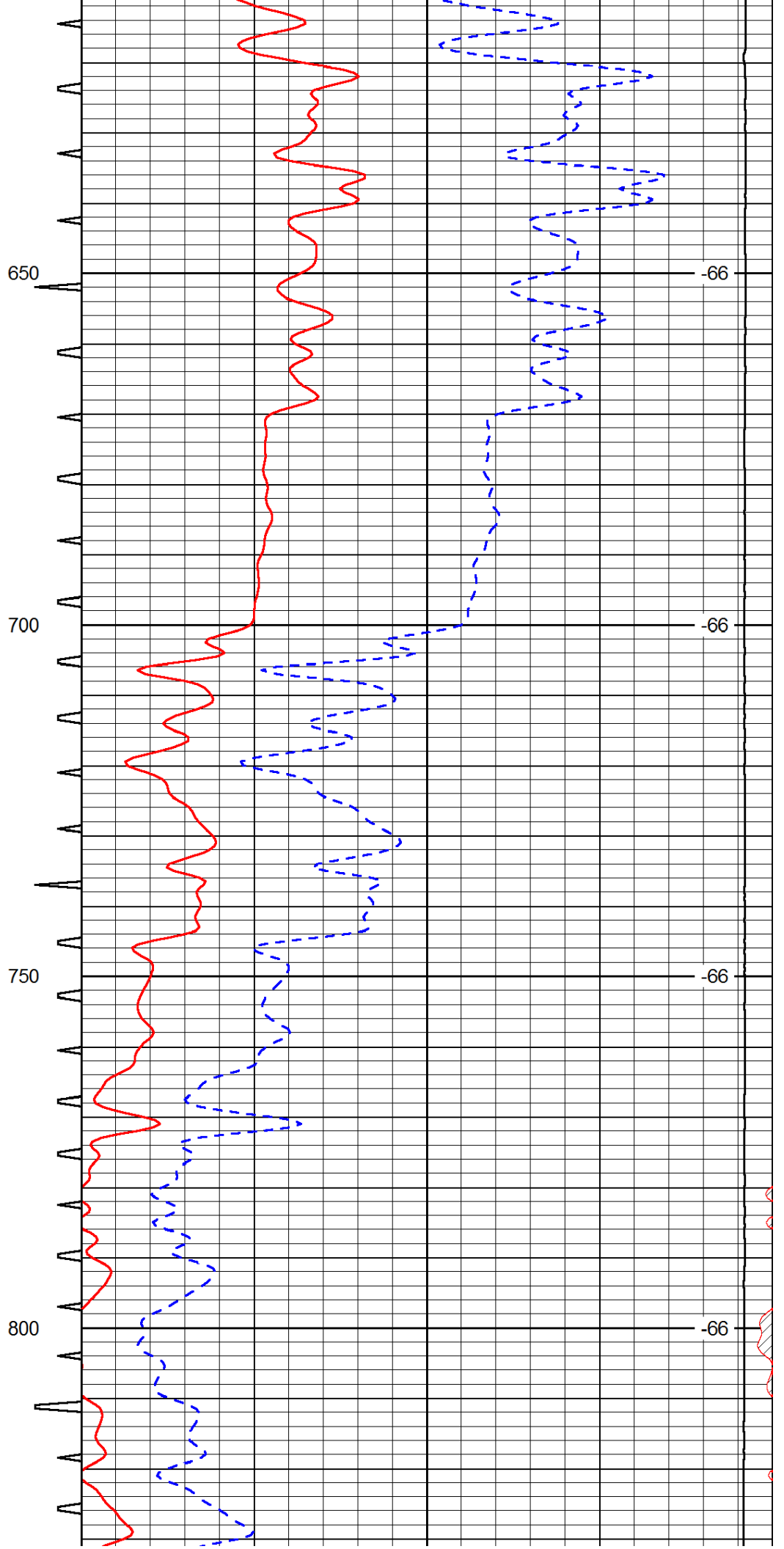
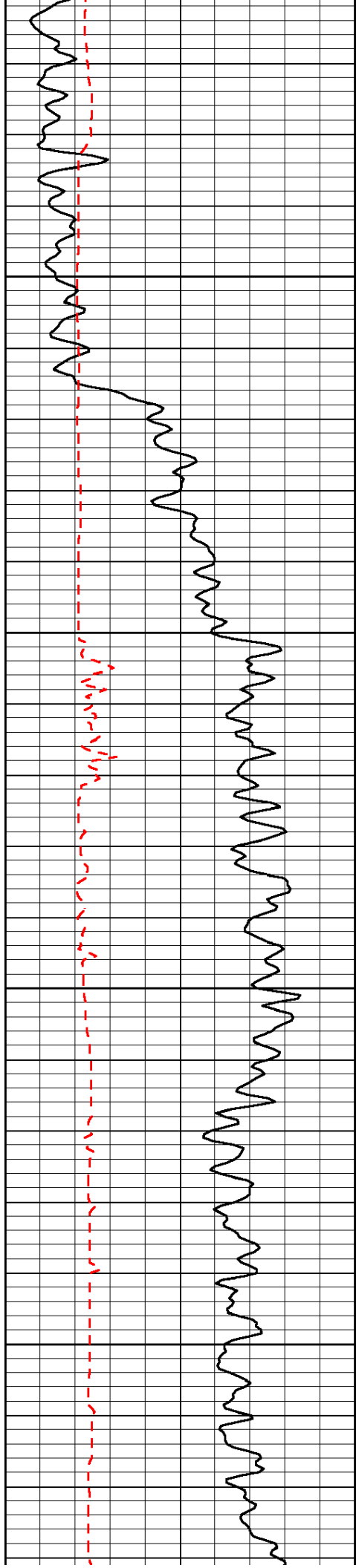
Gove, 10 West to 26 Road, 3 South to P Road, 1/2 East, South Into

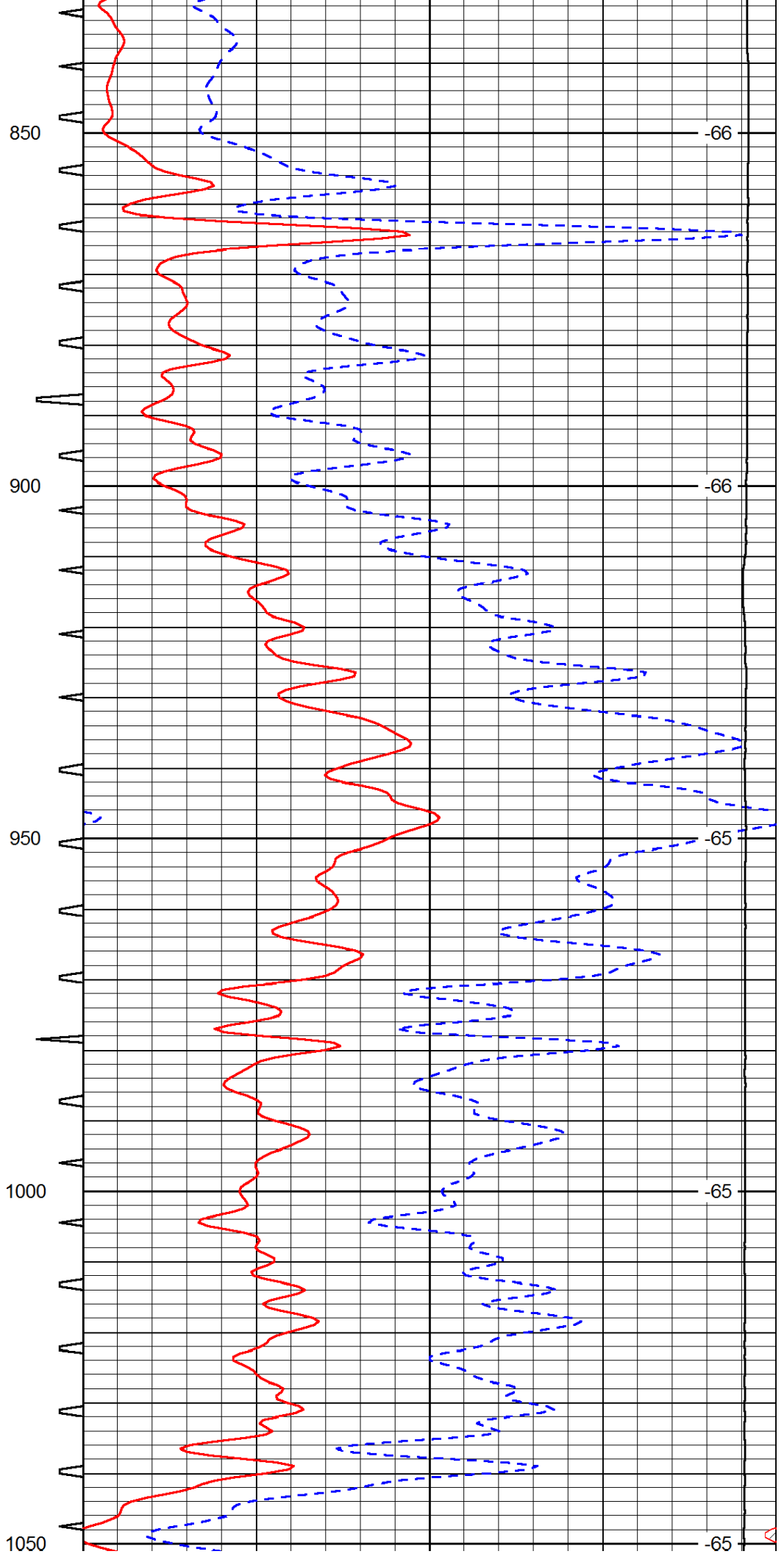
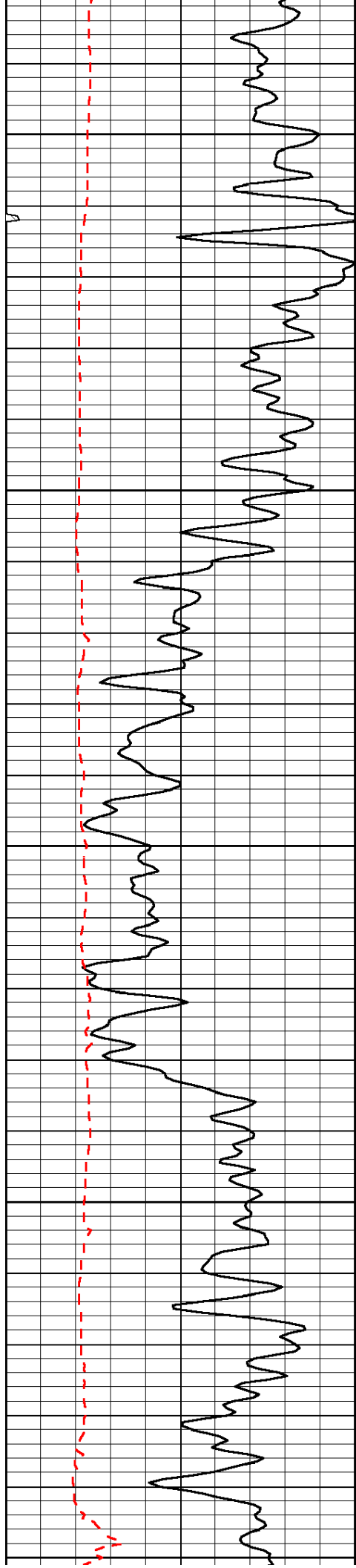
0	Gamma Ray	150	Sonic Int	140	Delta Time (usec/ft)	40
150	Gamma Ray	300	5	0	SPOR	-10
6	scal	16		15000	LTEN (lb)	0

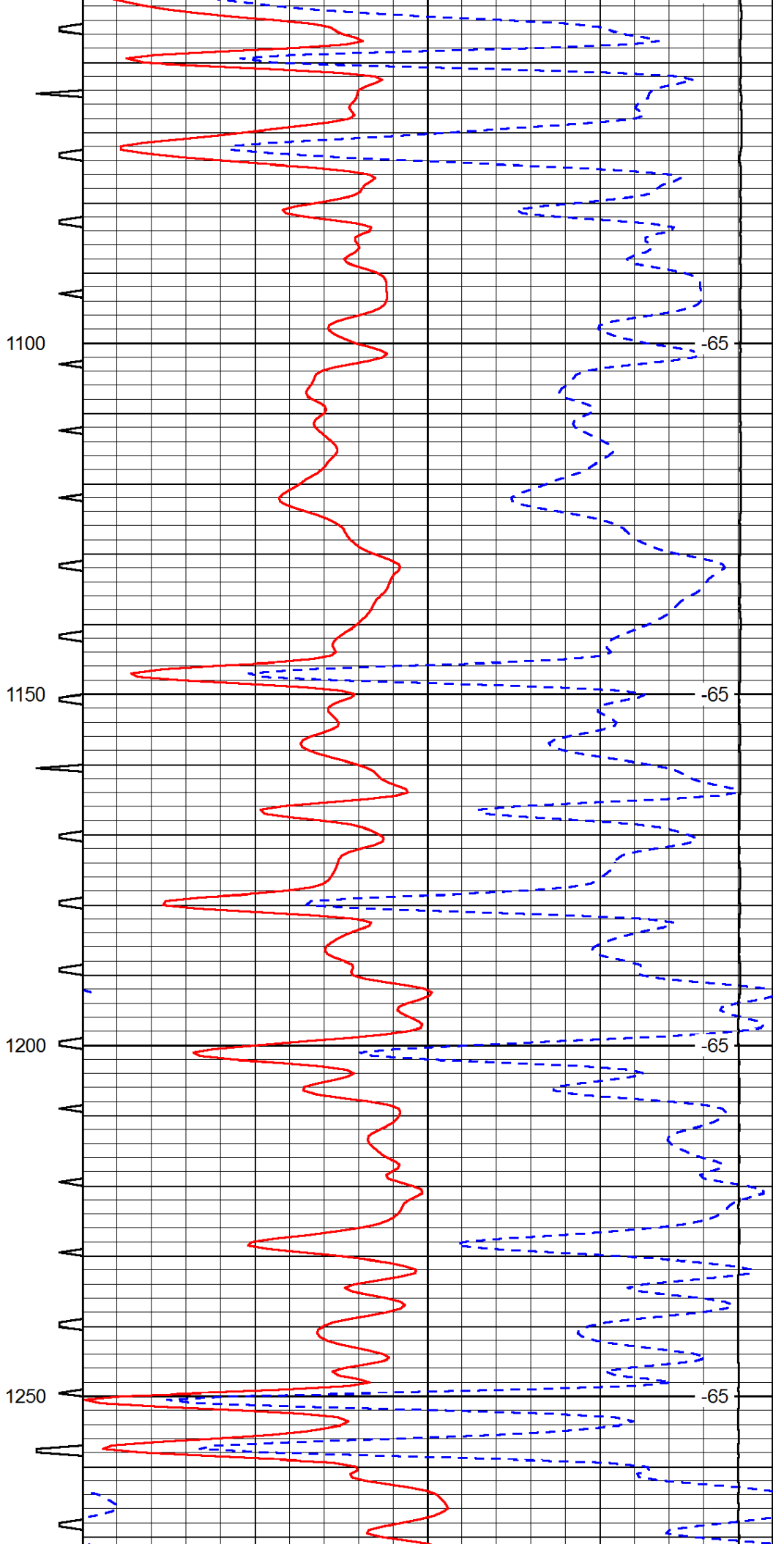
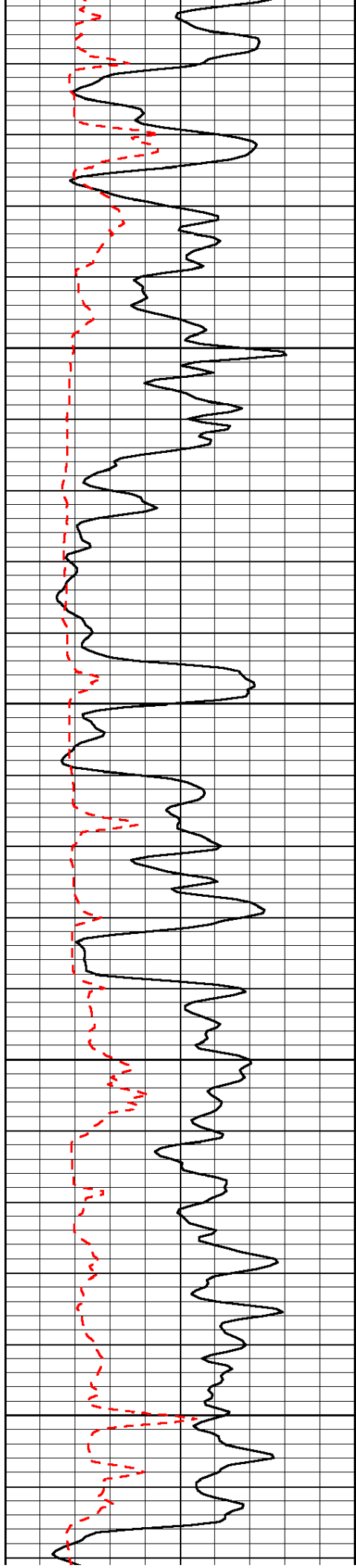
LSPD

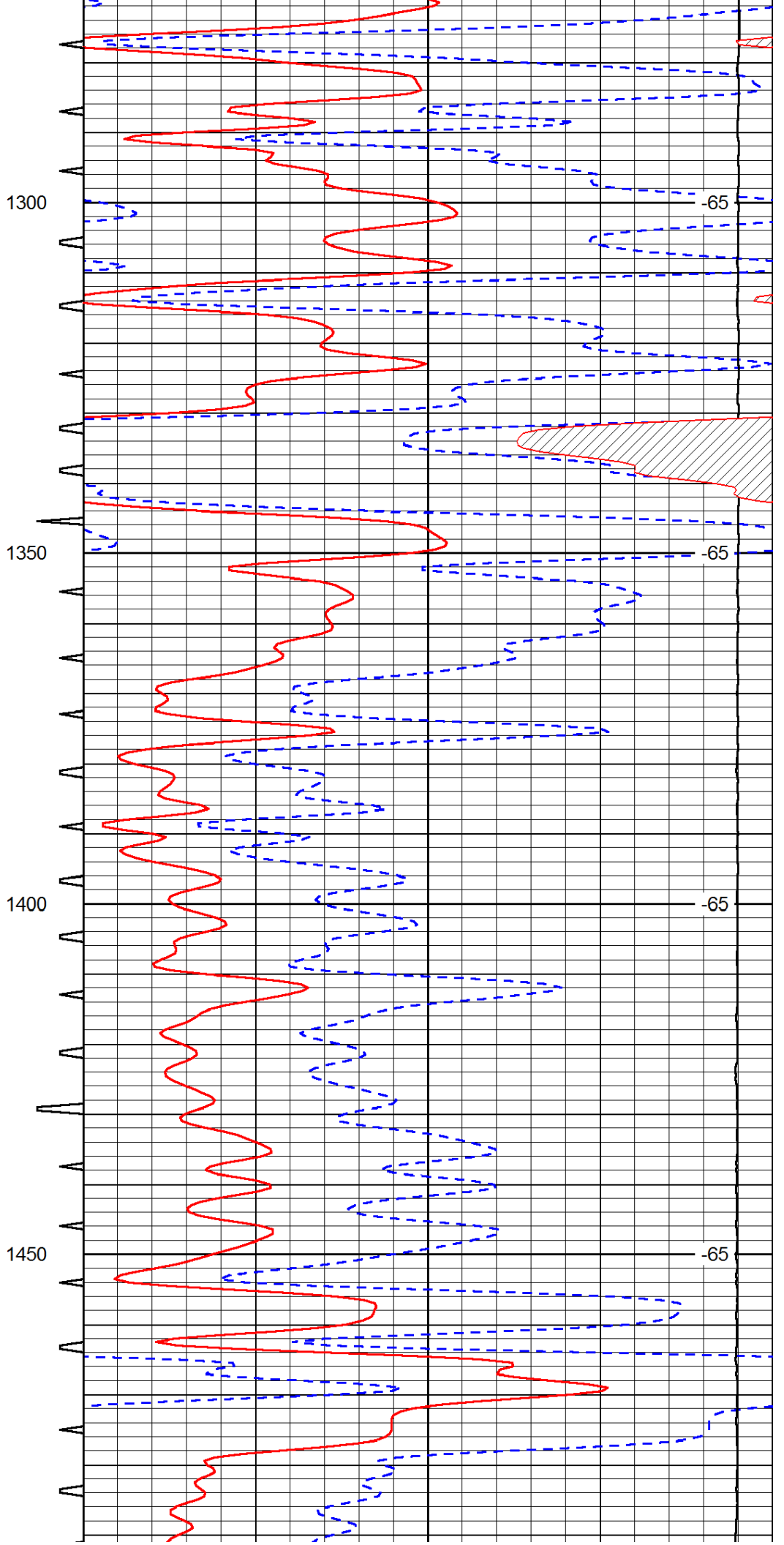
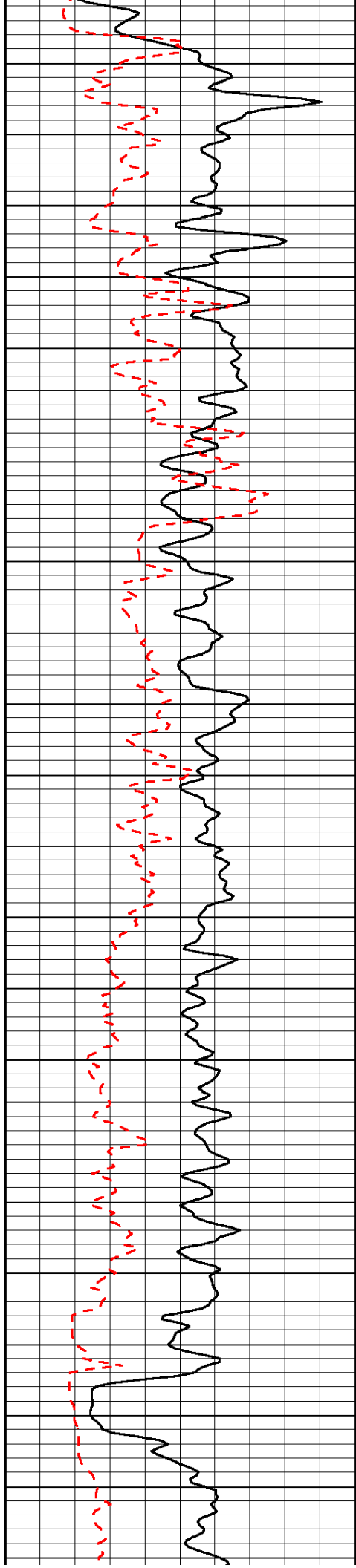


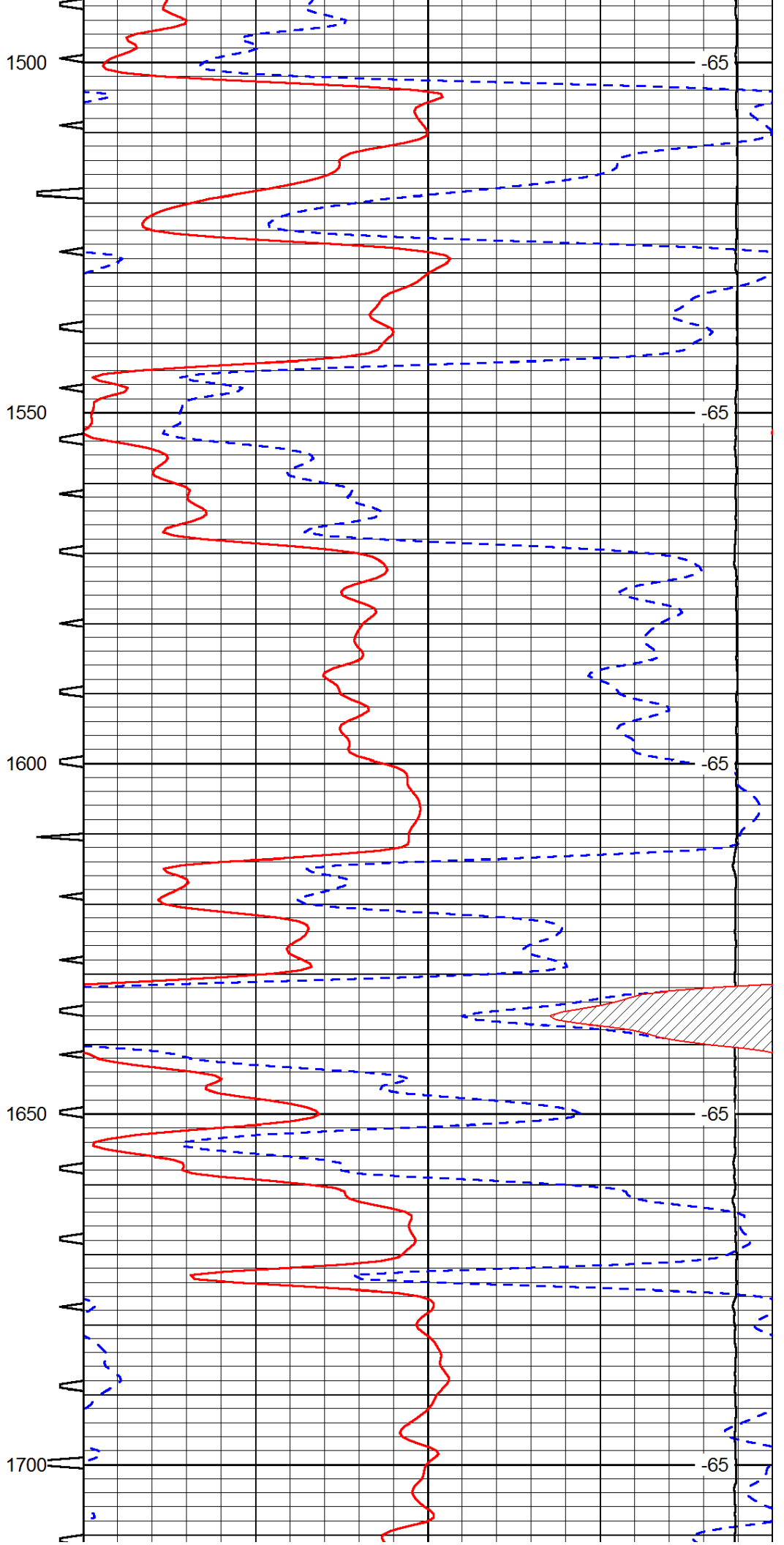
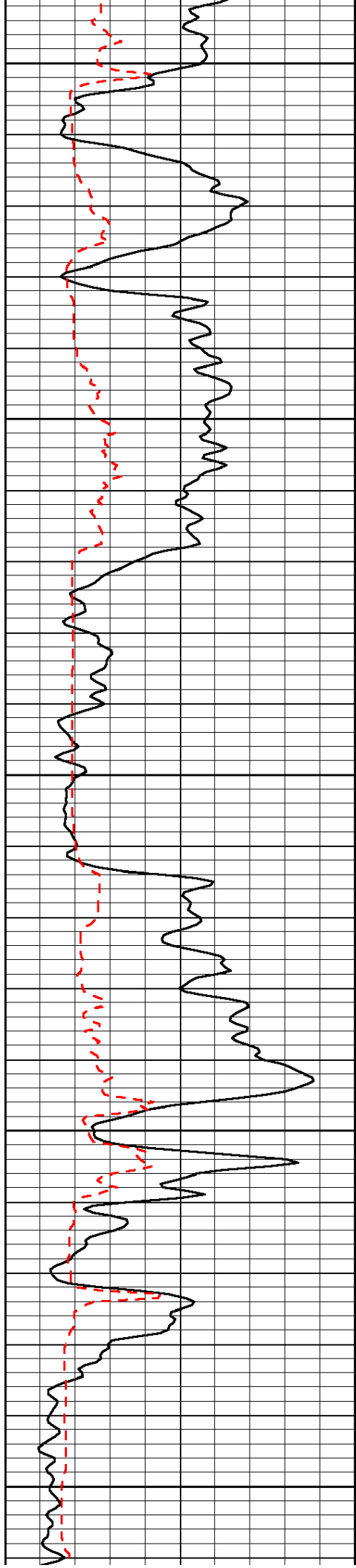


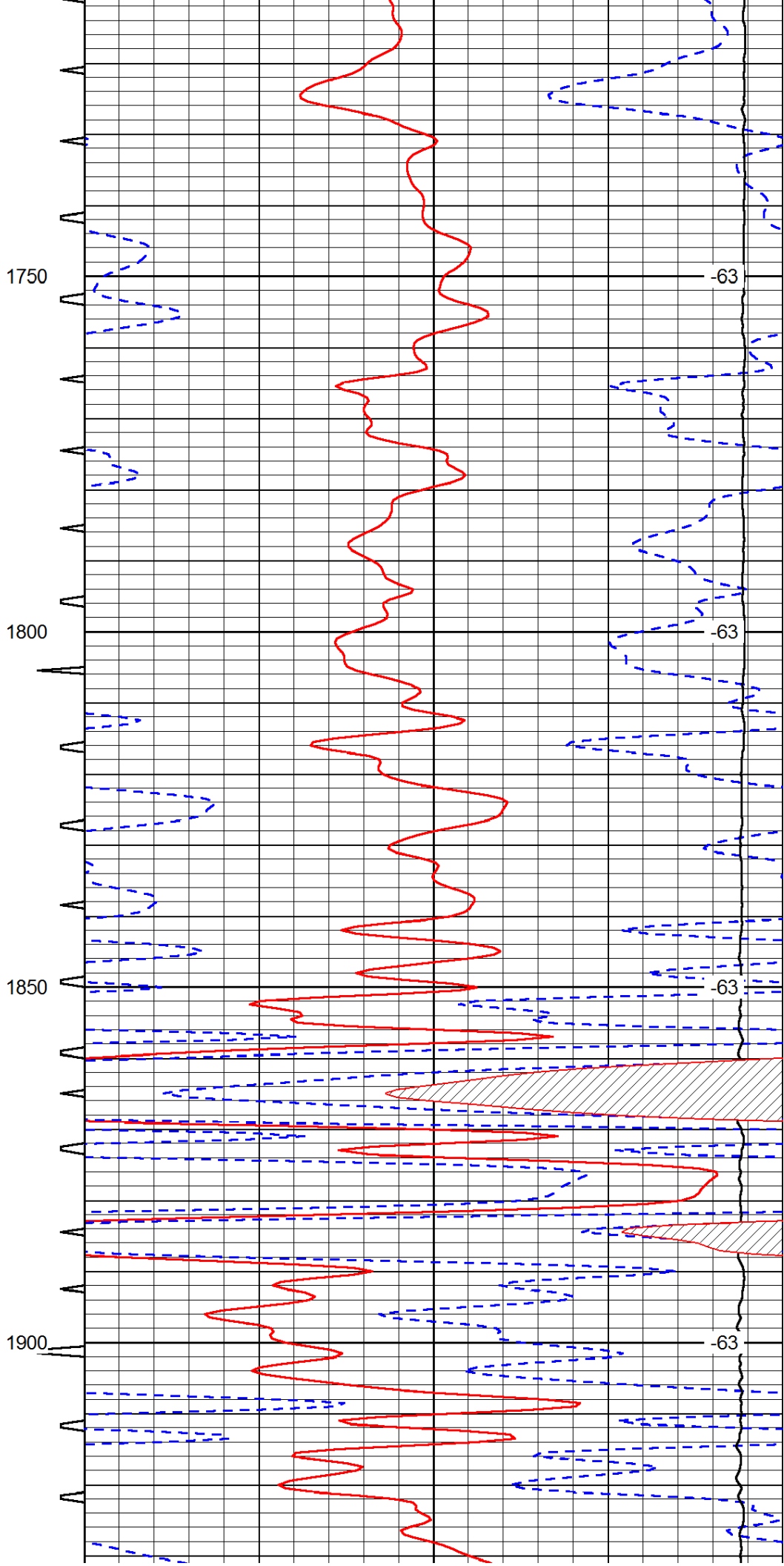
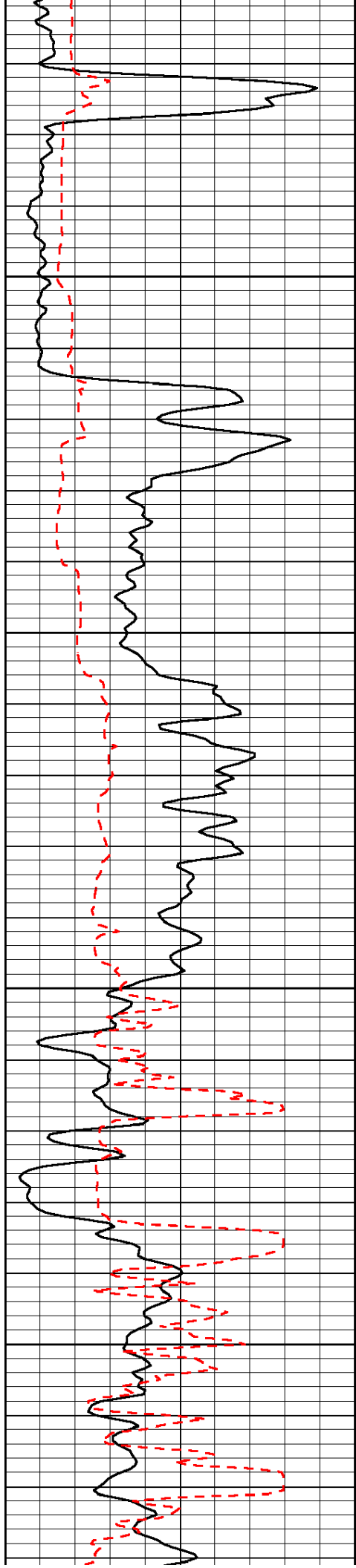


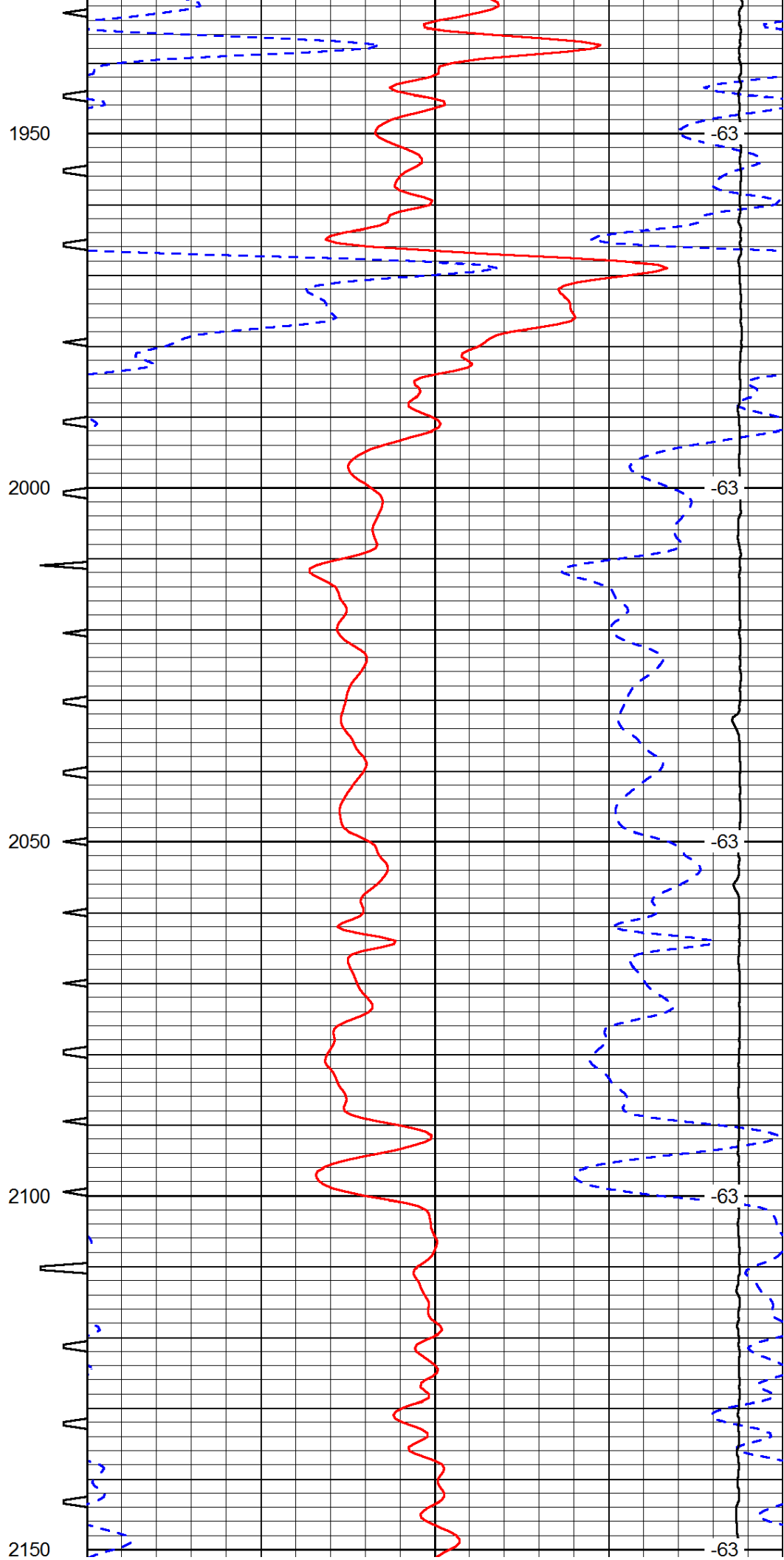
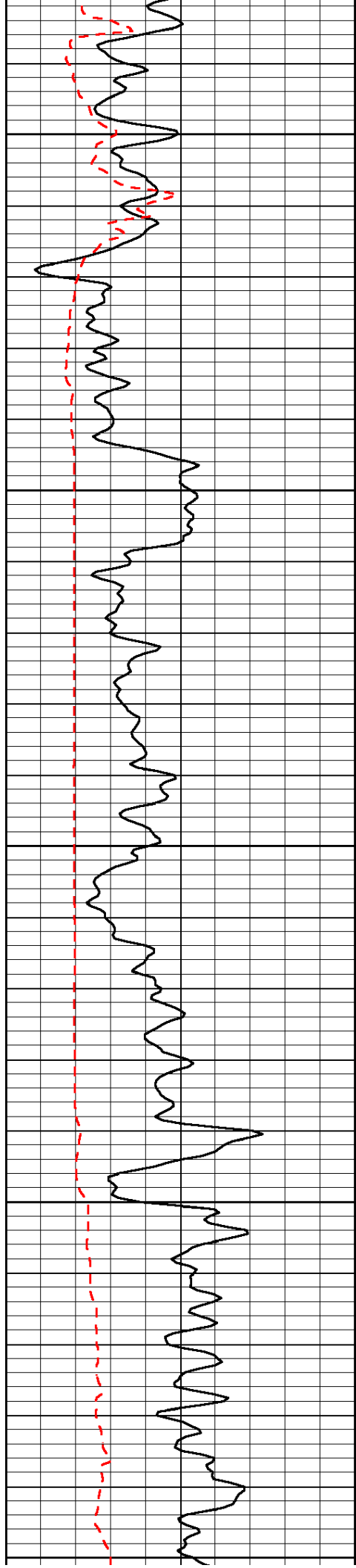


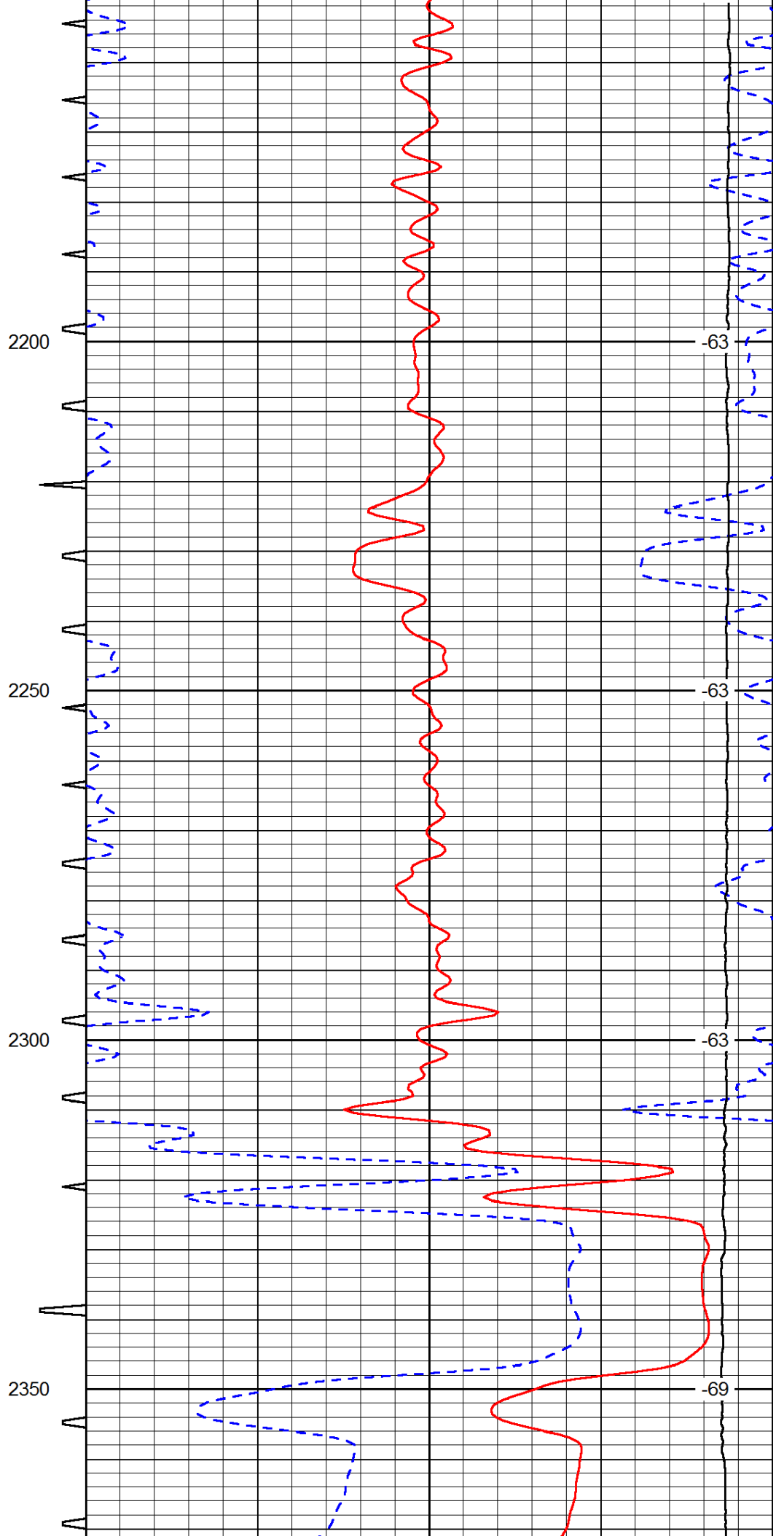
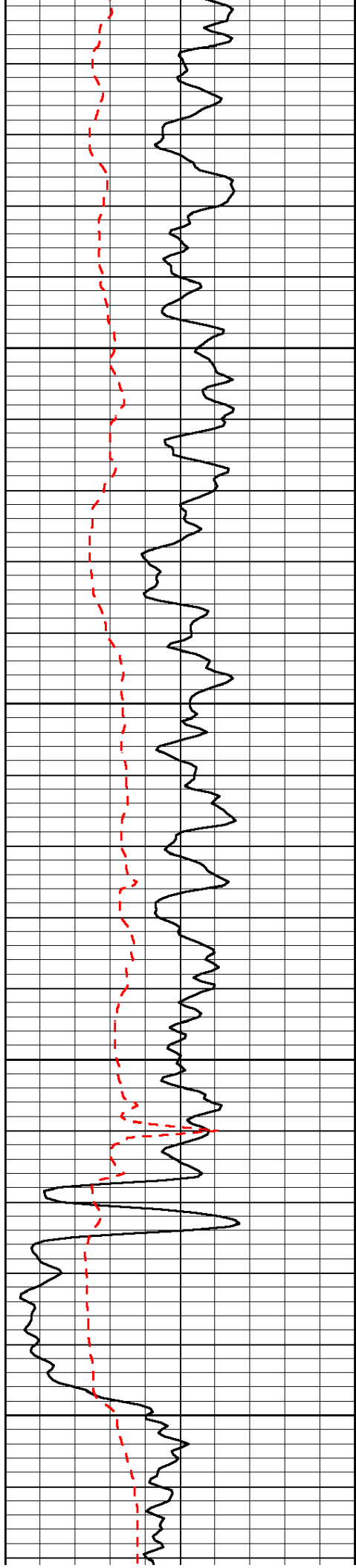


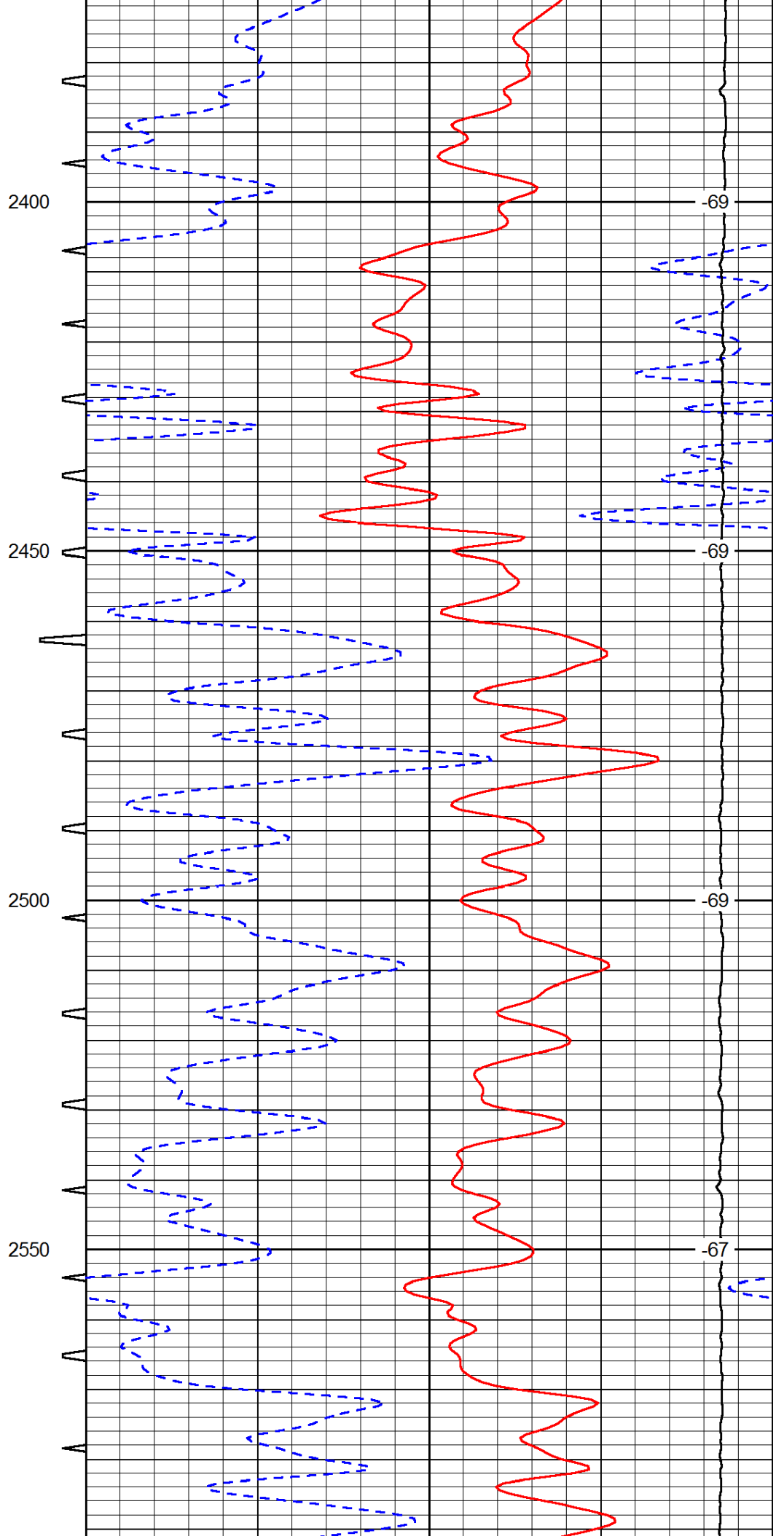
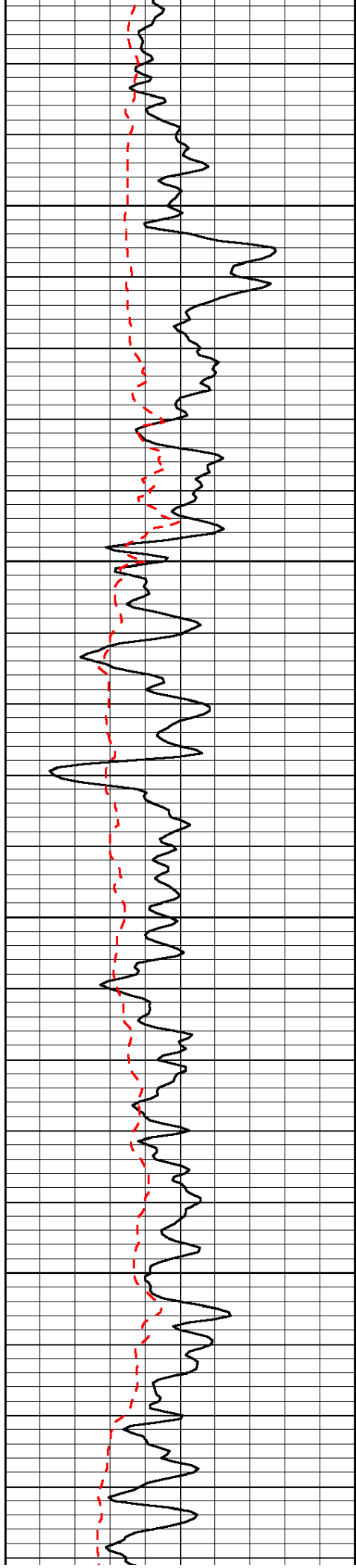


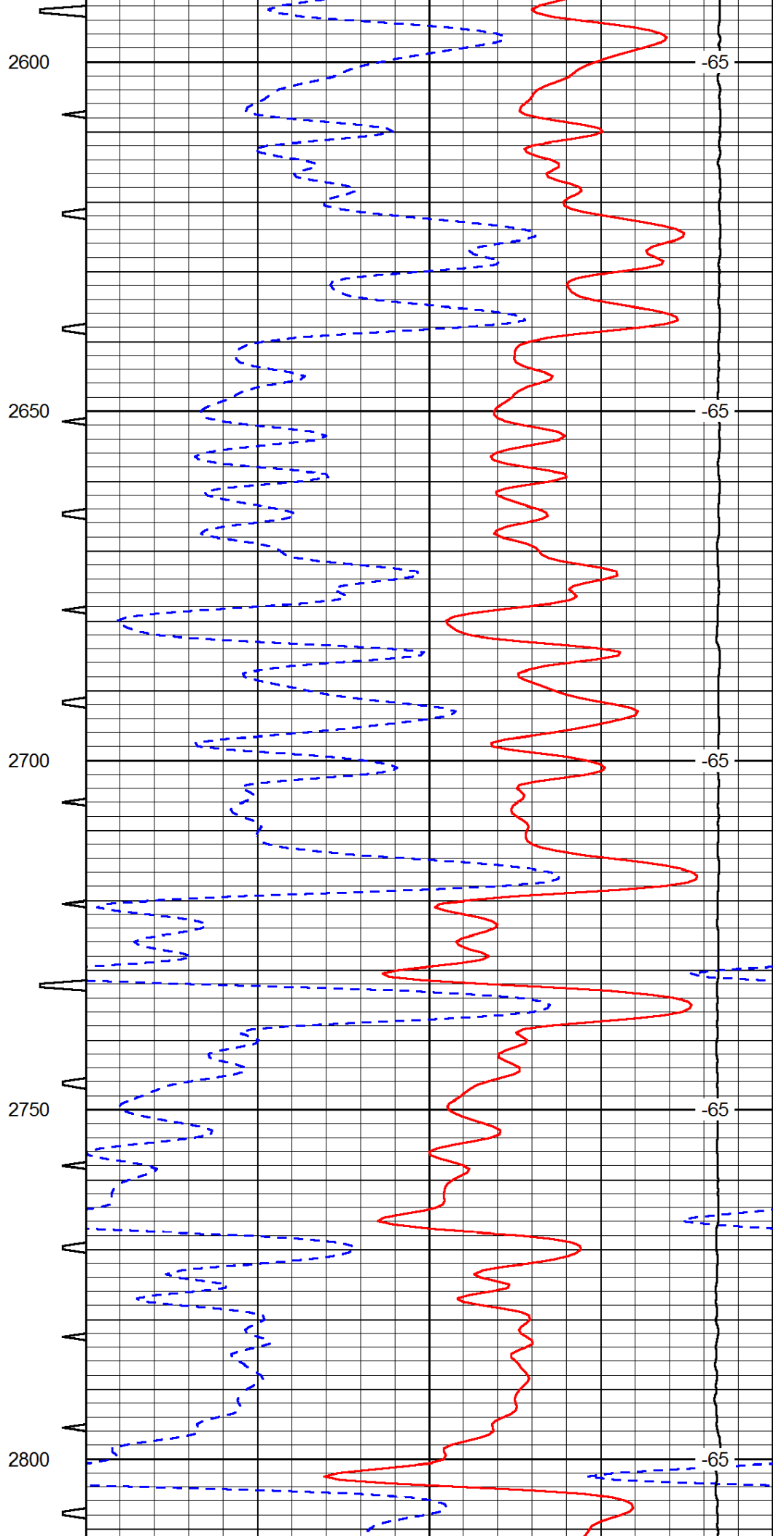
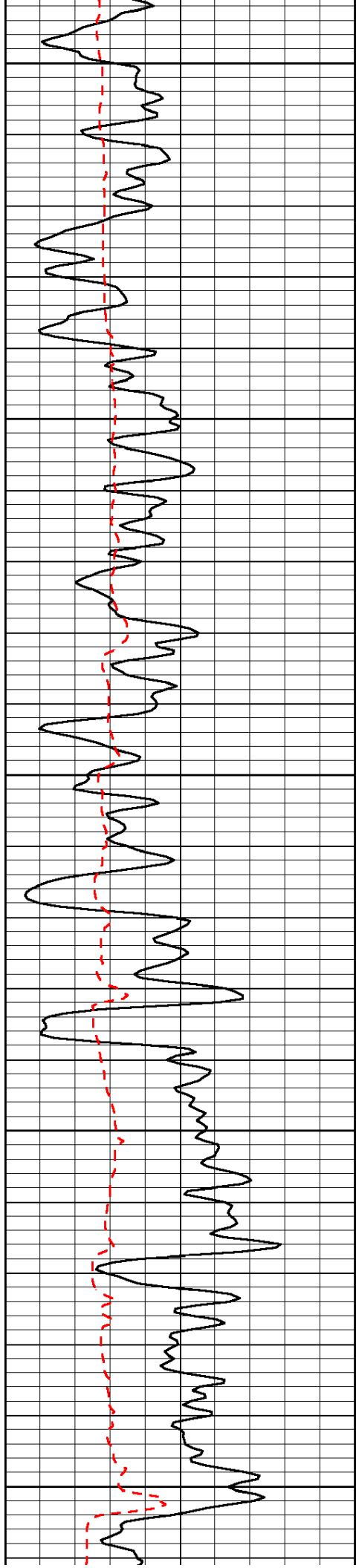


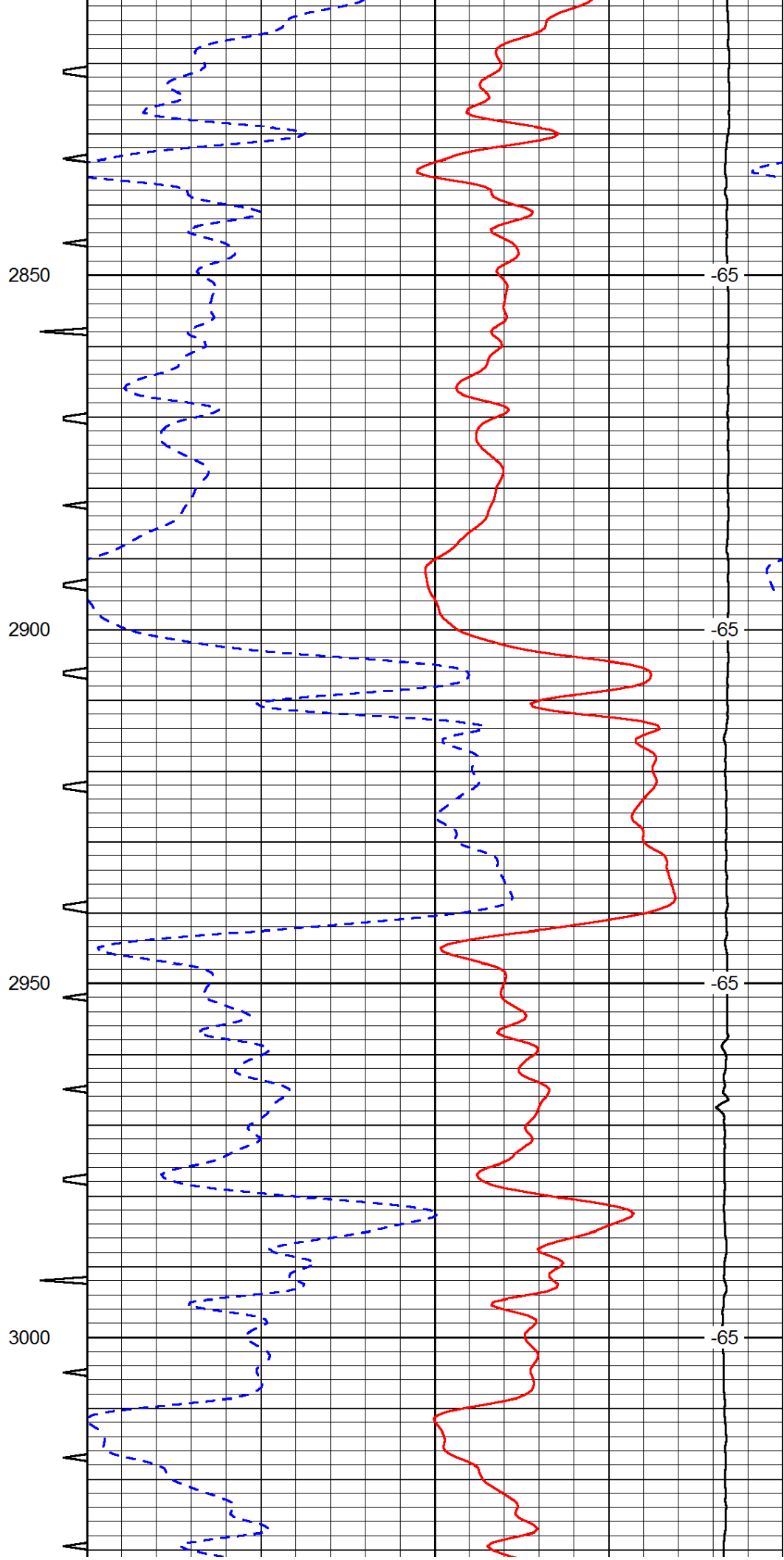
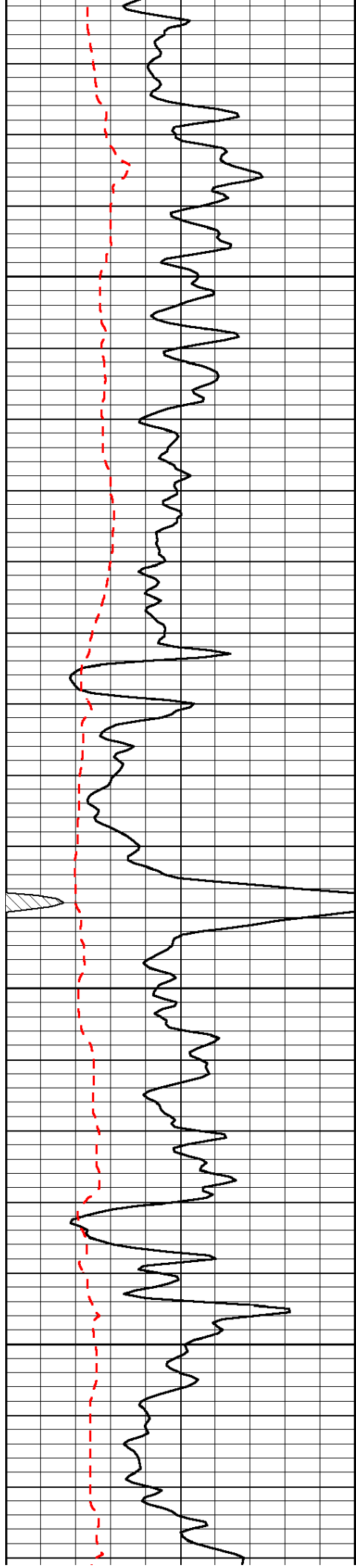


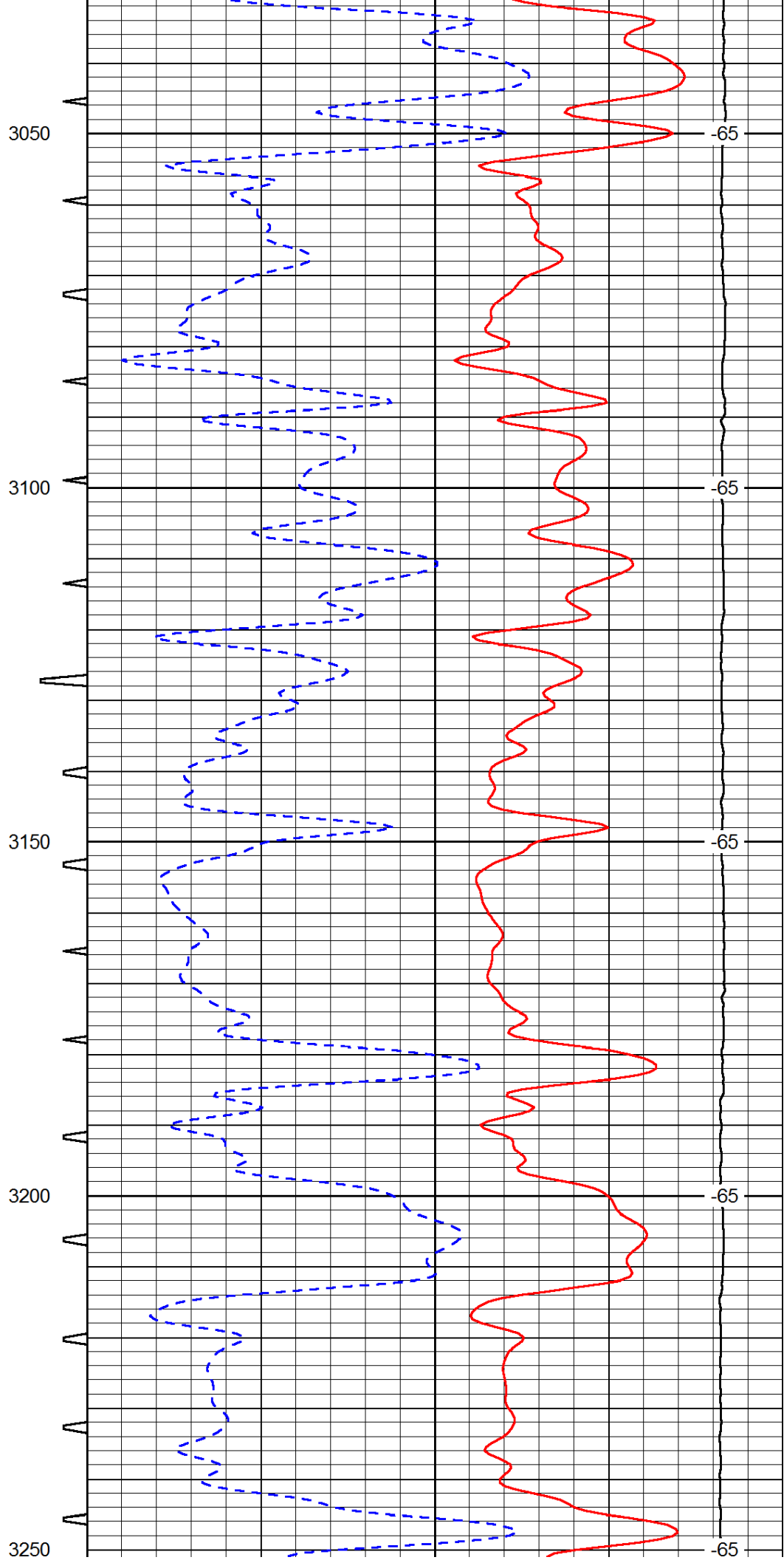
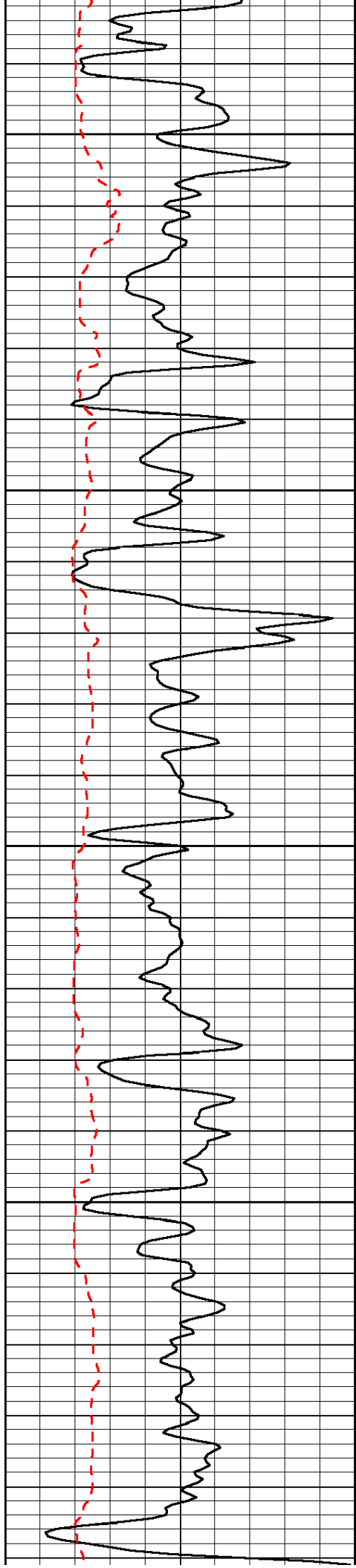


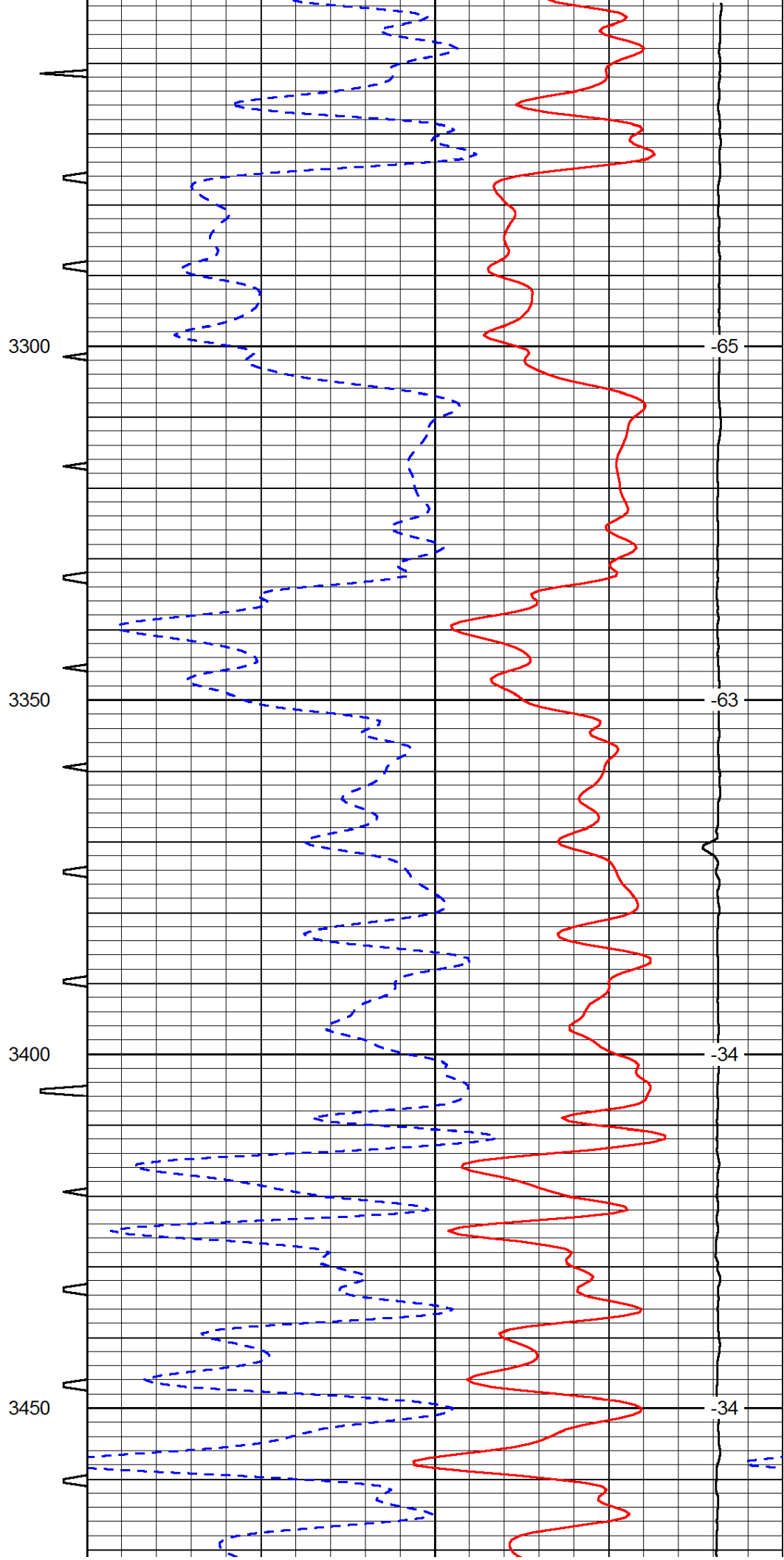
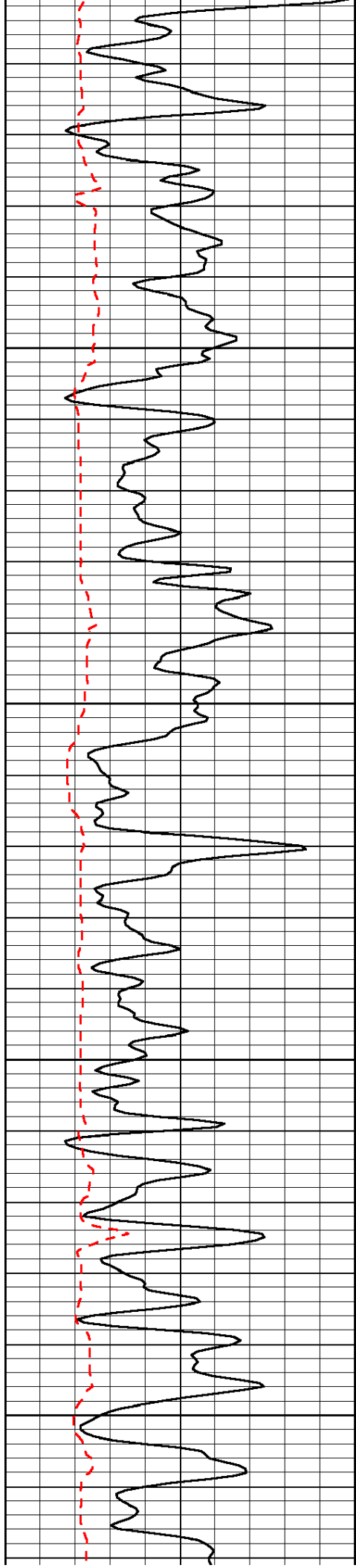


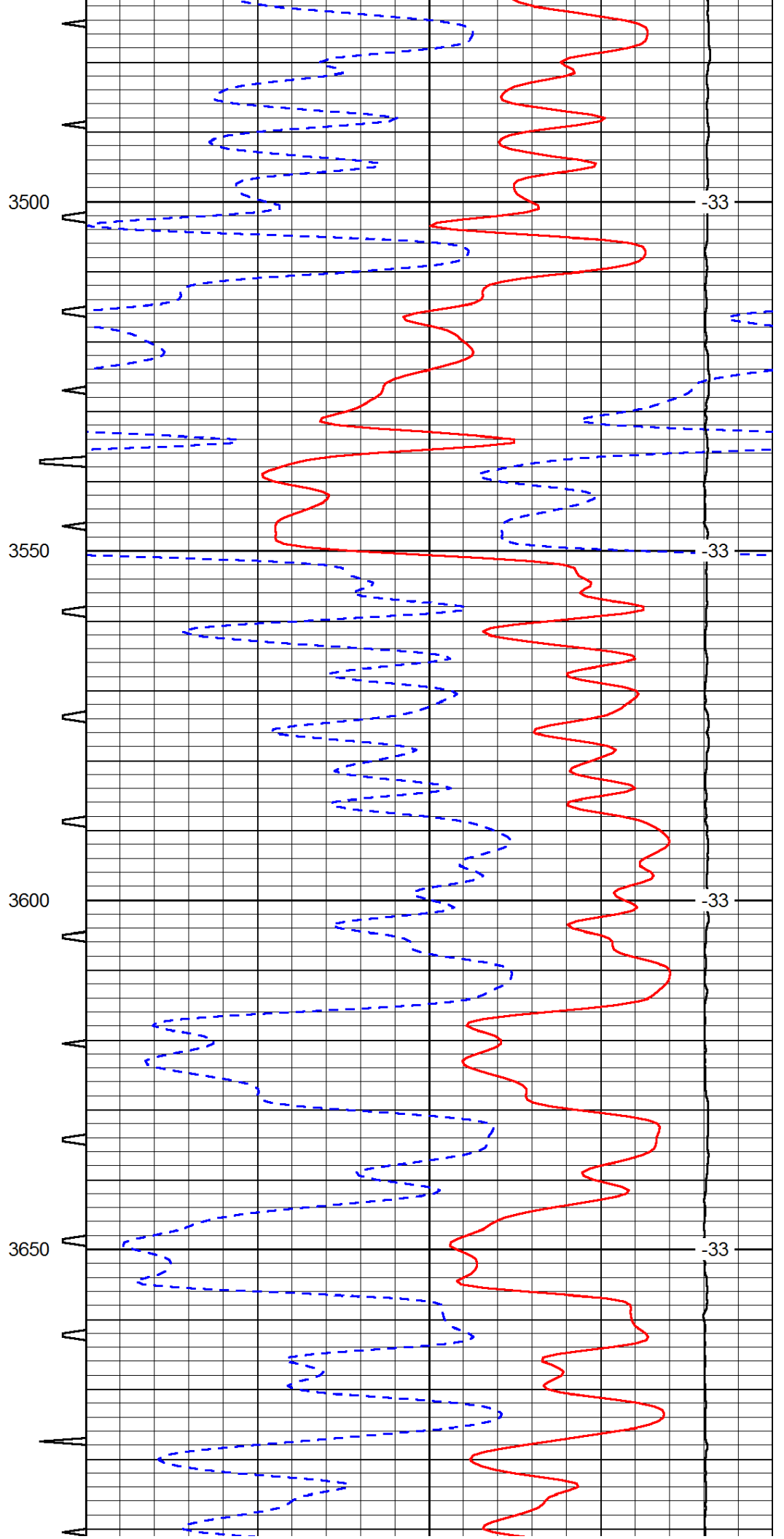
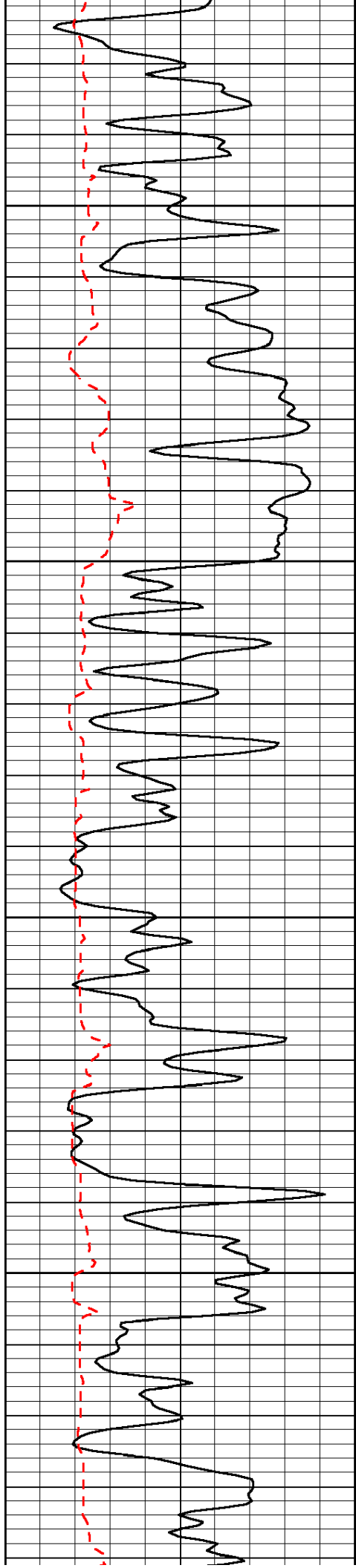


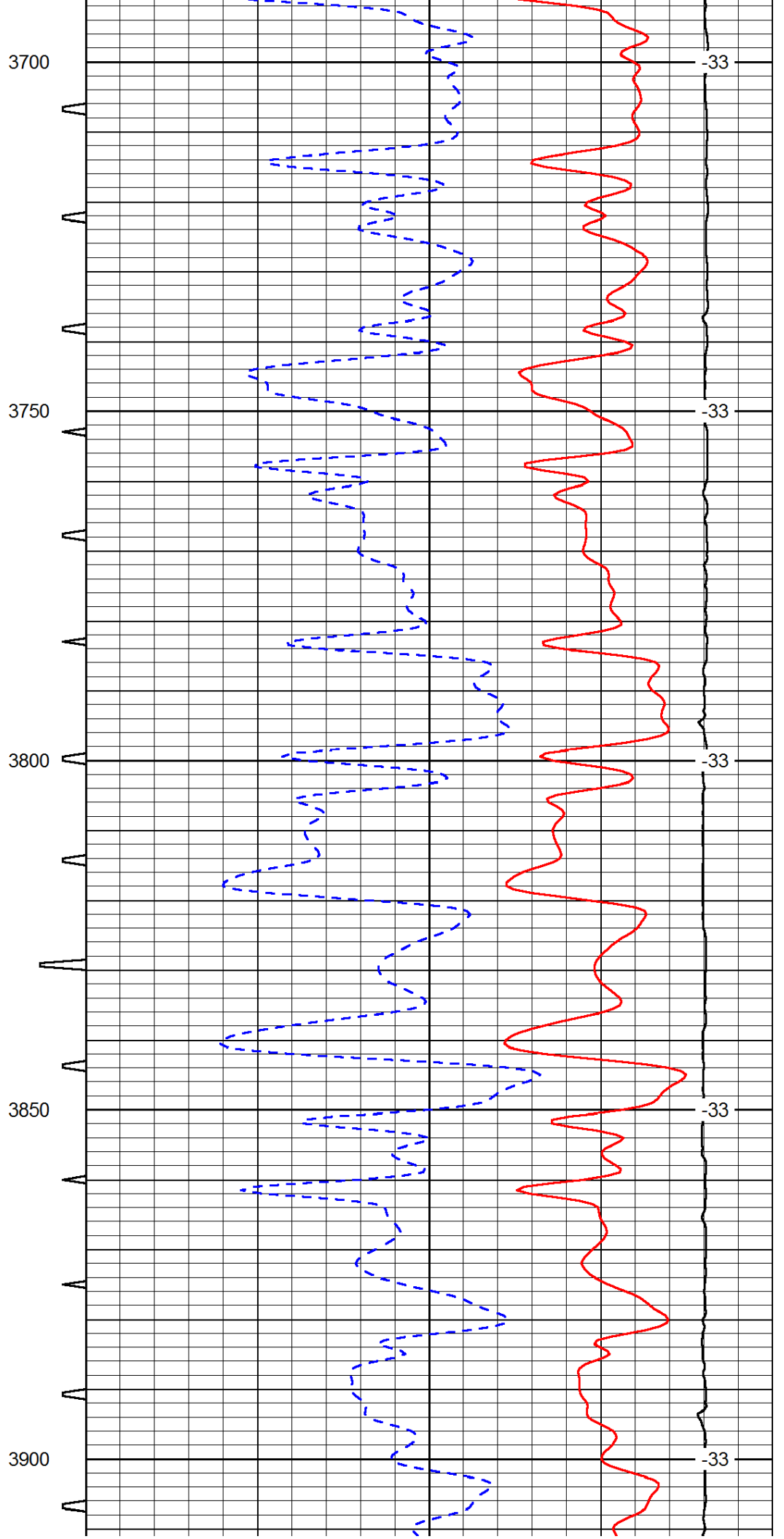
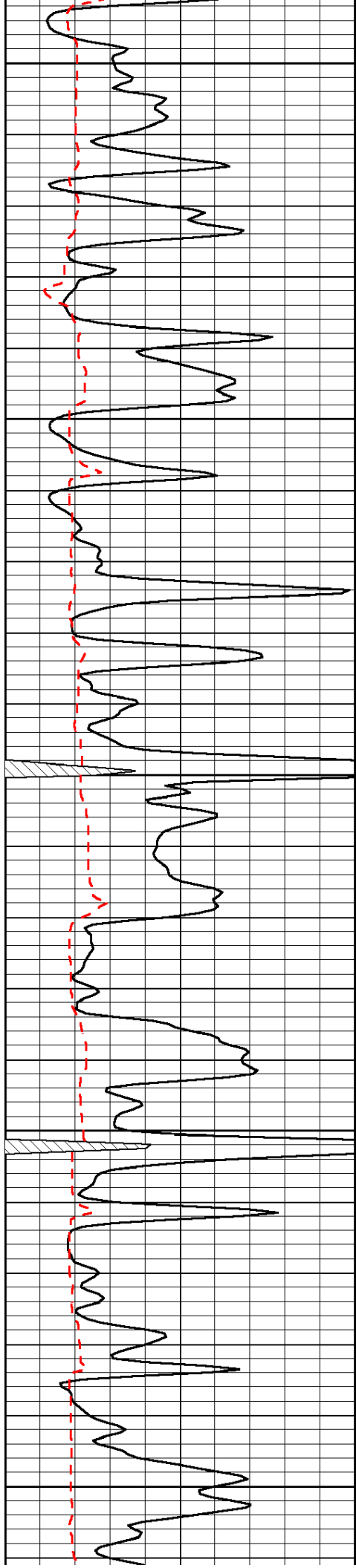


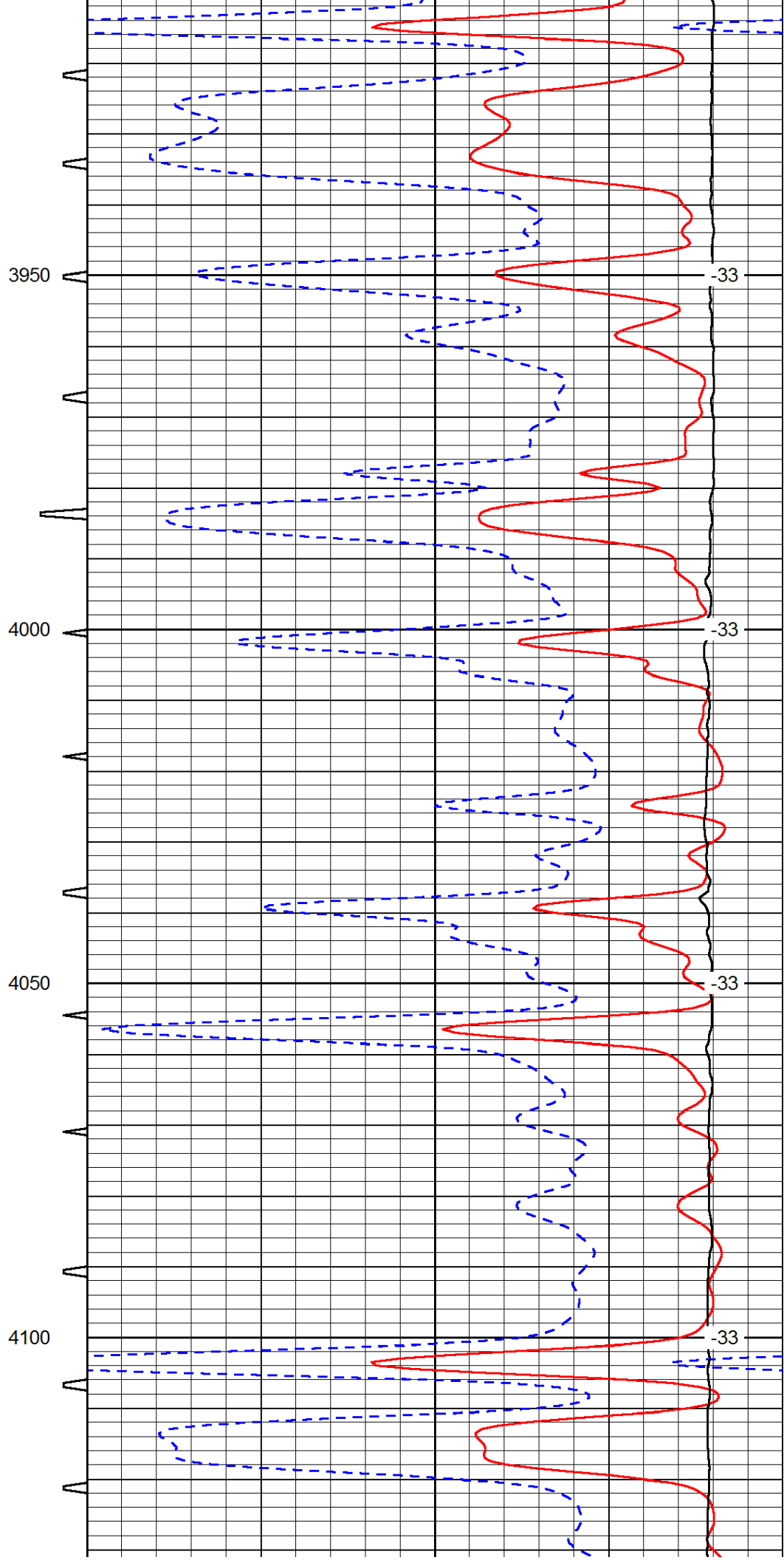
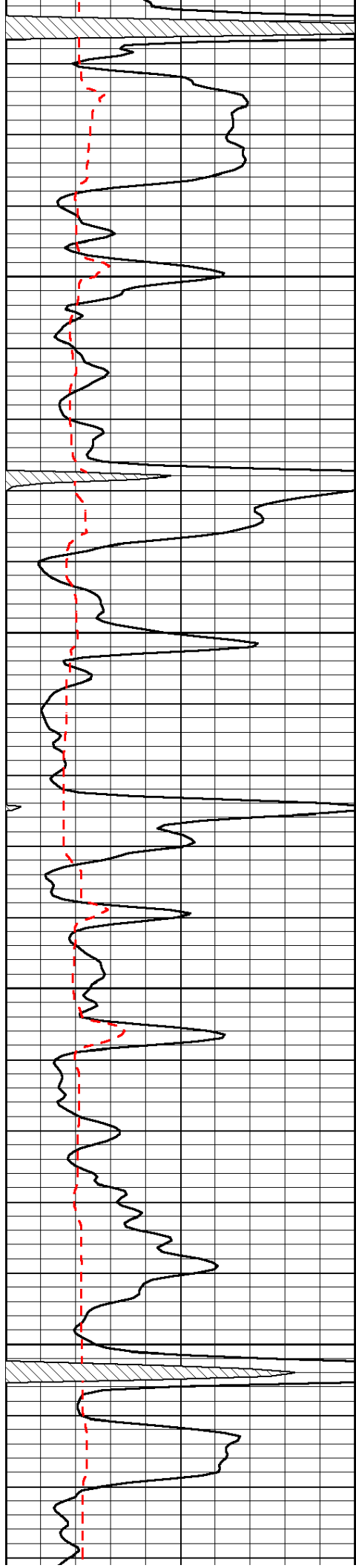


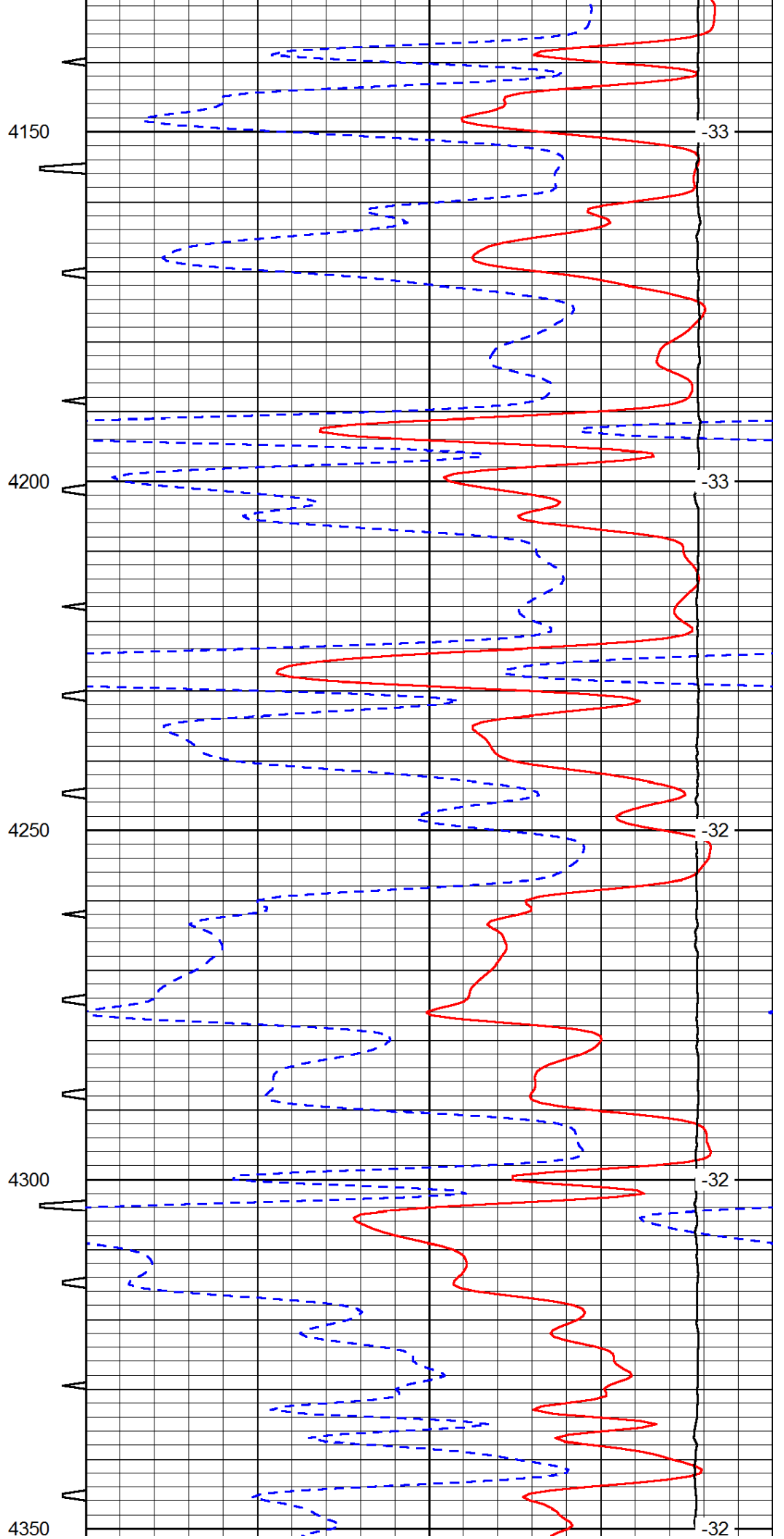
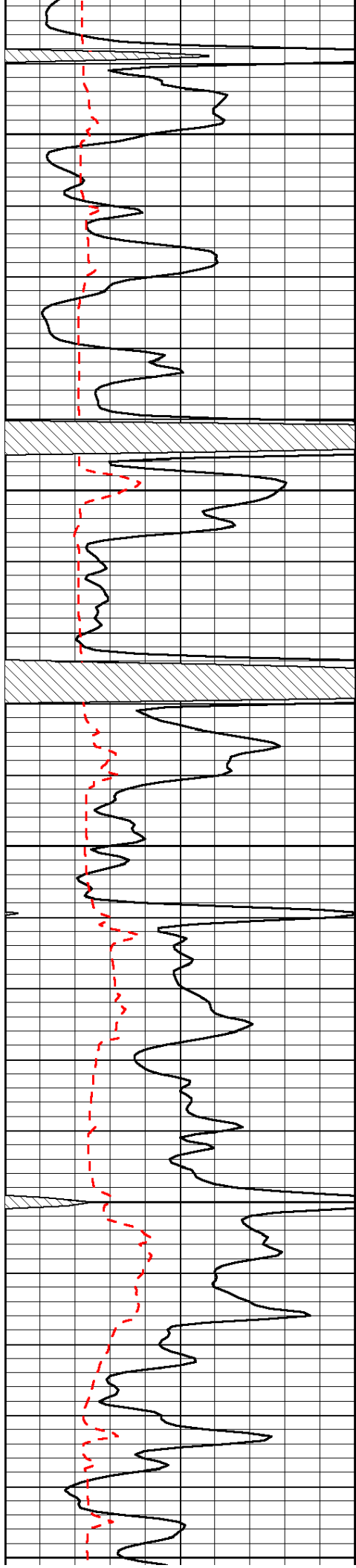


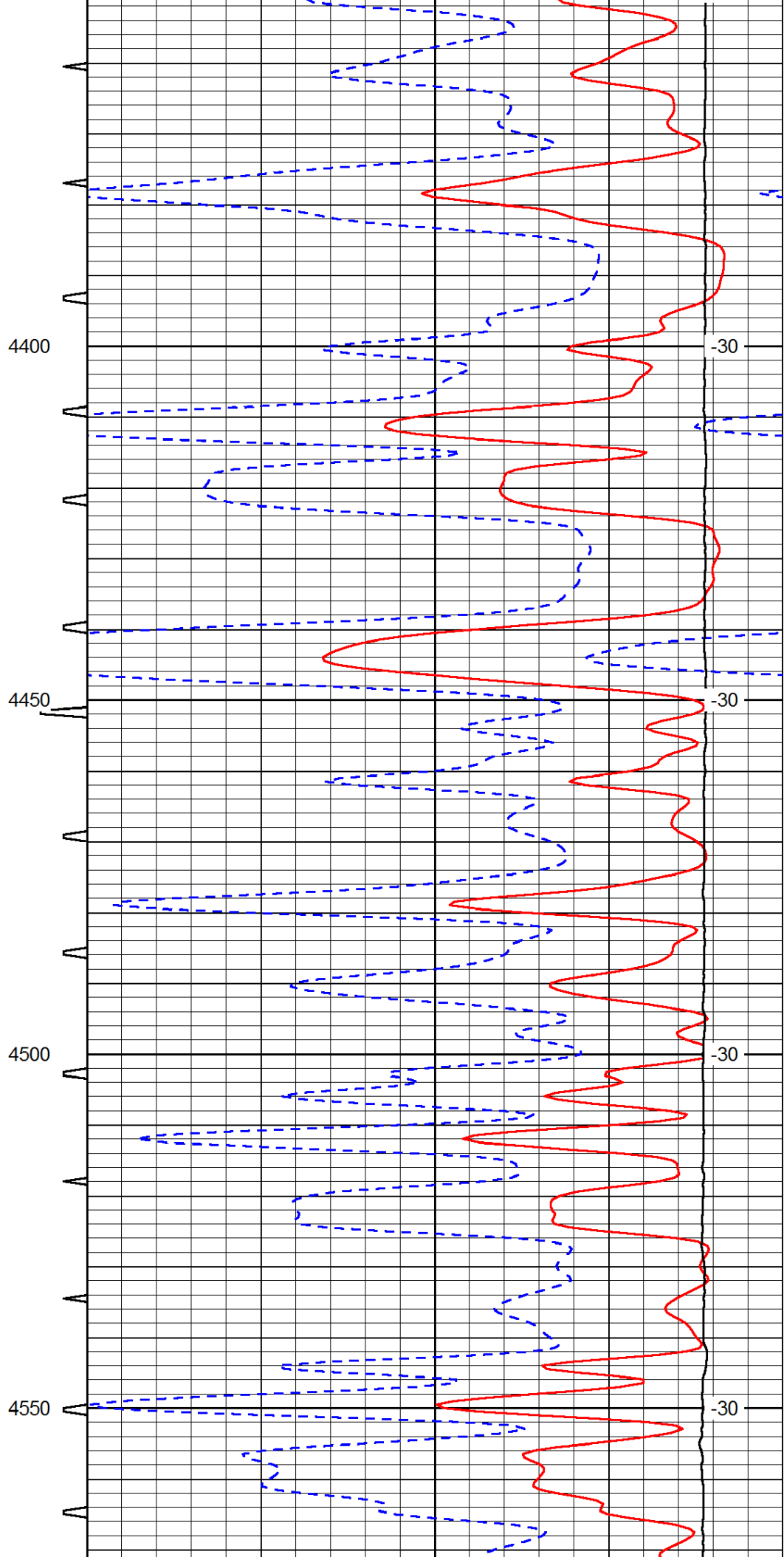
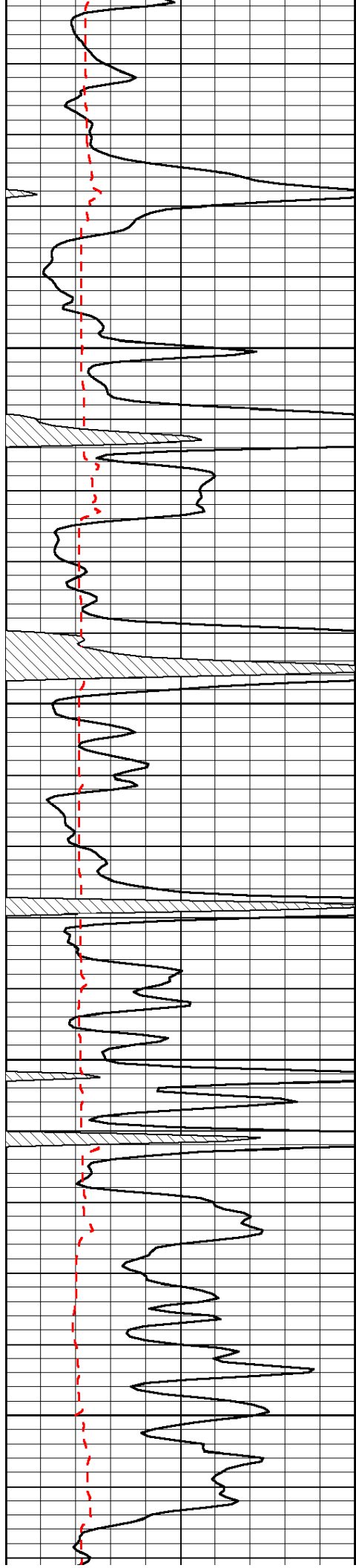


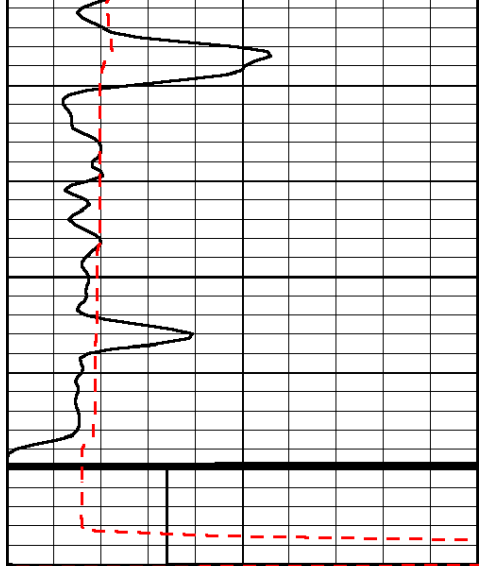




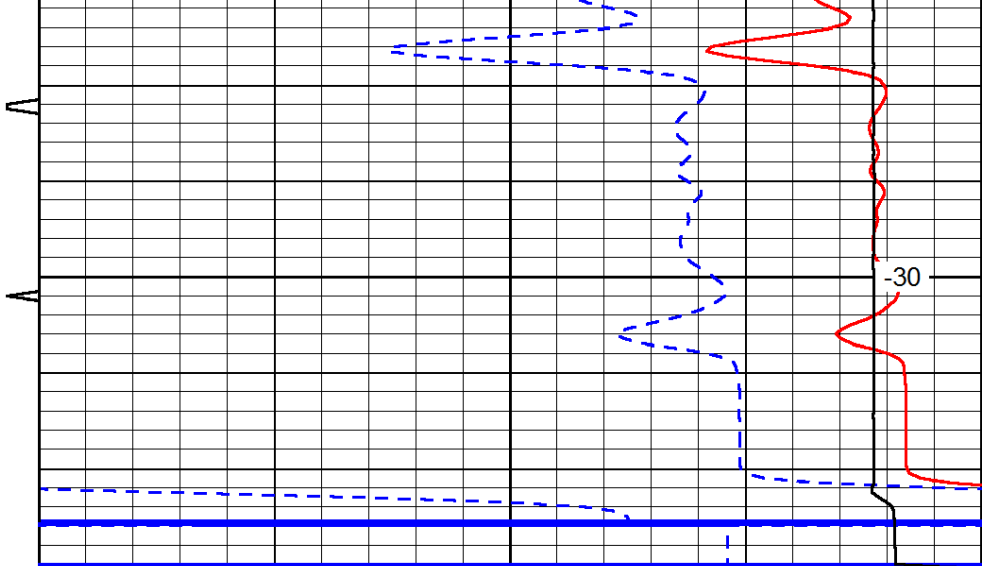








4600



-30

0	Gamma Ray	150	Sonic Int	140	Delta Time (usec/ft)	40
150	Gamma Ray	300	5	0	SPOR	-10
6	scal	16		15000	LTEN (lb)	0
LSPD						