



SUPERIOR
Hays,
Kansas

MICRO
LOG

Company	RAYMOND OIL COMPANY, INC.	Company	RAYMOND OIL COMPANY, INC.
Well	MICHAUD TRUST #5	Well	MICHAUD TRUST #5
Field		Field	
County	LANE	County	LANE
State	KANSAS	State	KANSAS
Location:	1747' FNL & 1949' FEL	API # :	15-101-22370-0000
Permanent Datum	GROUND LEVEL	Elevation	2692
Log Measured From	KELLY BUSHING 5' A.G.L.	Other Services	CDL/CNL DIL
Drilling Measured From	KELLY BUSHING	Elevation	K.B. 2697 D.F. 2695 G.L. 2692
	SEC 21 TWP 18S RGE 27W		

Date	5/23/12
Run Number	TWO
Depth Driller	4444
Depth Logger	4442
Bottom Logged Interval	4440
Top Log Interval	3400
Casing Driller	8 5/8" @ 261
Casing Logger	260
Bit Size	7 7/8
Type Fluid in Hole	CHEMICAL MUD
Density / Viscosity	9.2/50
pH / Fluid Loss	11.0/8.0
Source of Sample	FLOWLINE
Rin @ Meas. Temp	1.00 @ 85F
Rmf @ Meas. Temp	0.75 @ 85F
Rmc @ Meas. Temp	1.20 @ 85F
Source of Rmf / Rmc	MEASURED
Rin @ BHT	0.71 @ 120F
Time Circulation Stopped	2 HOURS
Time Logger on Bottom	
Maximum Recorded Temperature	120F
Equipment Number	680
Location	HAYS, KS.
Recorded By	JEFF GRONEMEG
Witnessed By	LARRY FRIEND

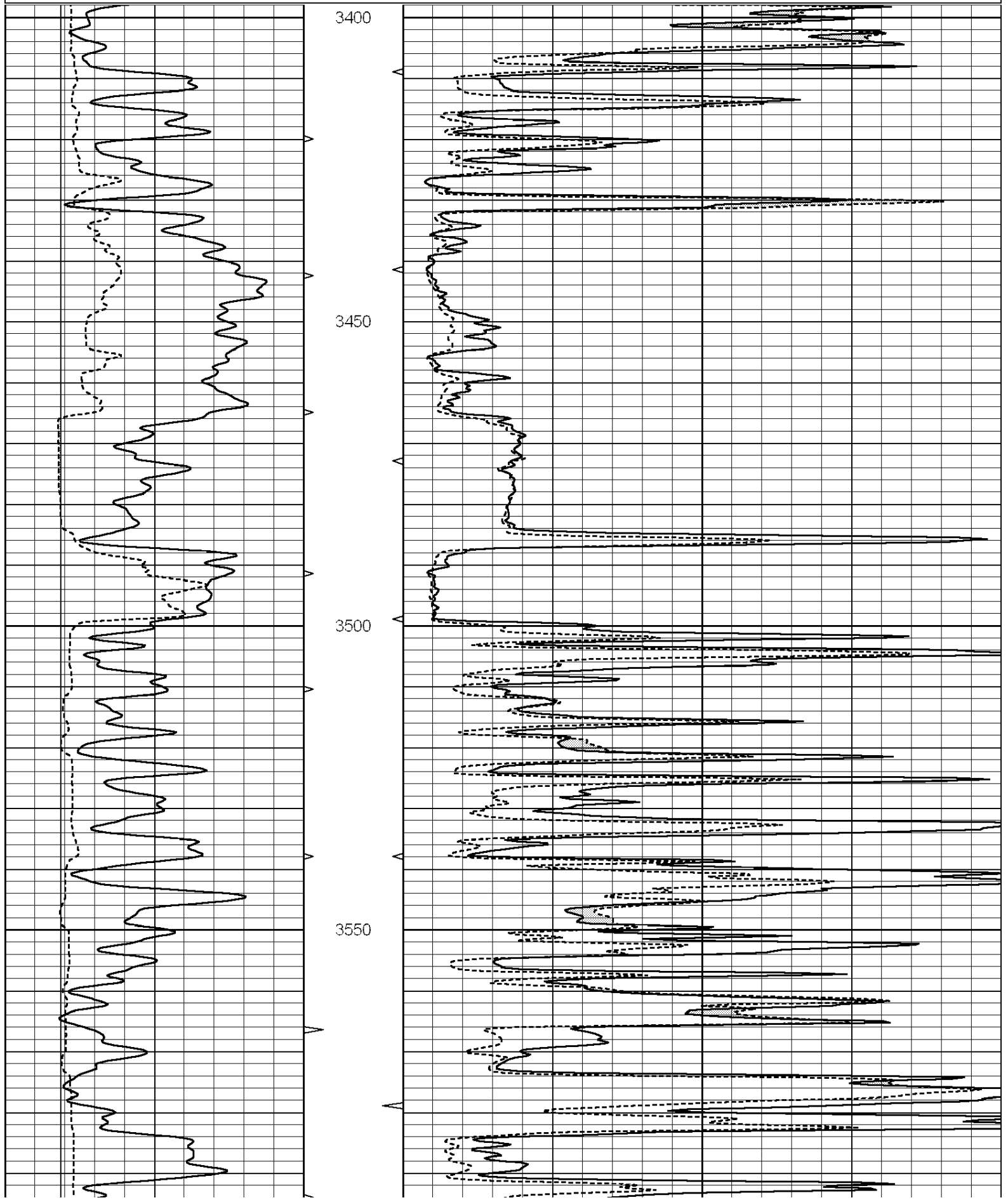
<<< Fold Here >>>

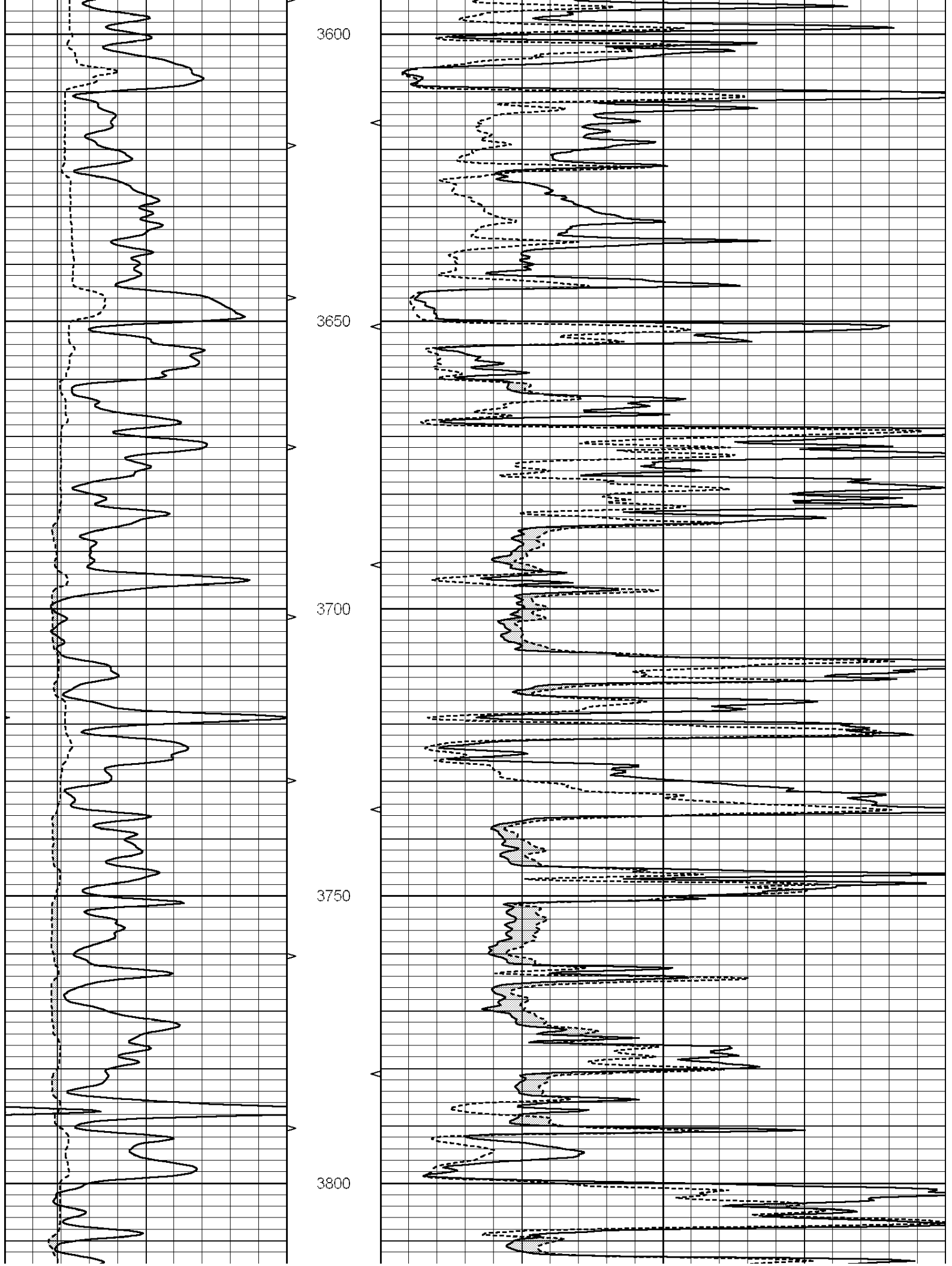
All interpretations are opinions based on inferences from electrical or other measurements and we cannot and do not guarantee the accuracy or correctness of any interpretation, and we shall not, except in the case of gross or willful negligence on our part, be liable or responsible for any loss, costs, damages, or expenses incurred or sustained by anyone resulting from any interpretation made by any of our officers, agents or employees. These interpretations are also subject to our general terms and conditions set out in our current Price Schedule.

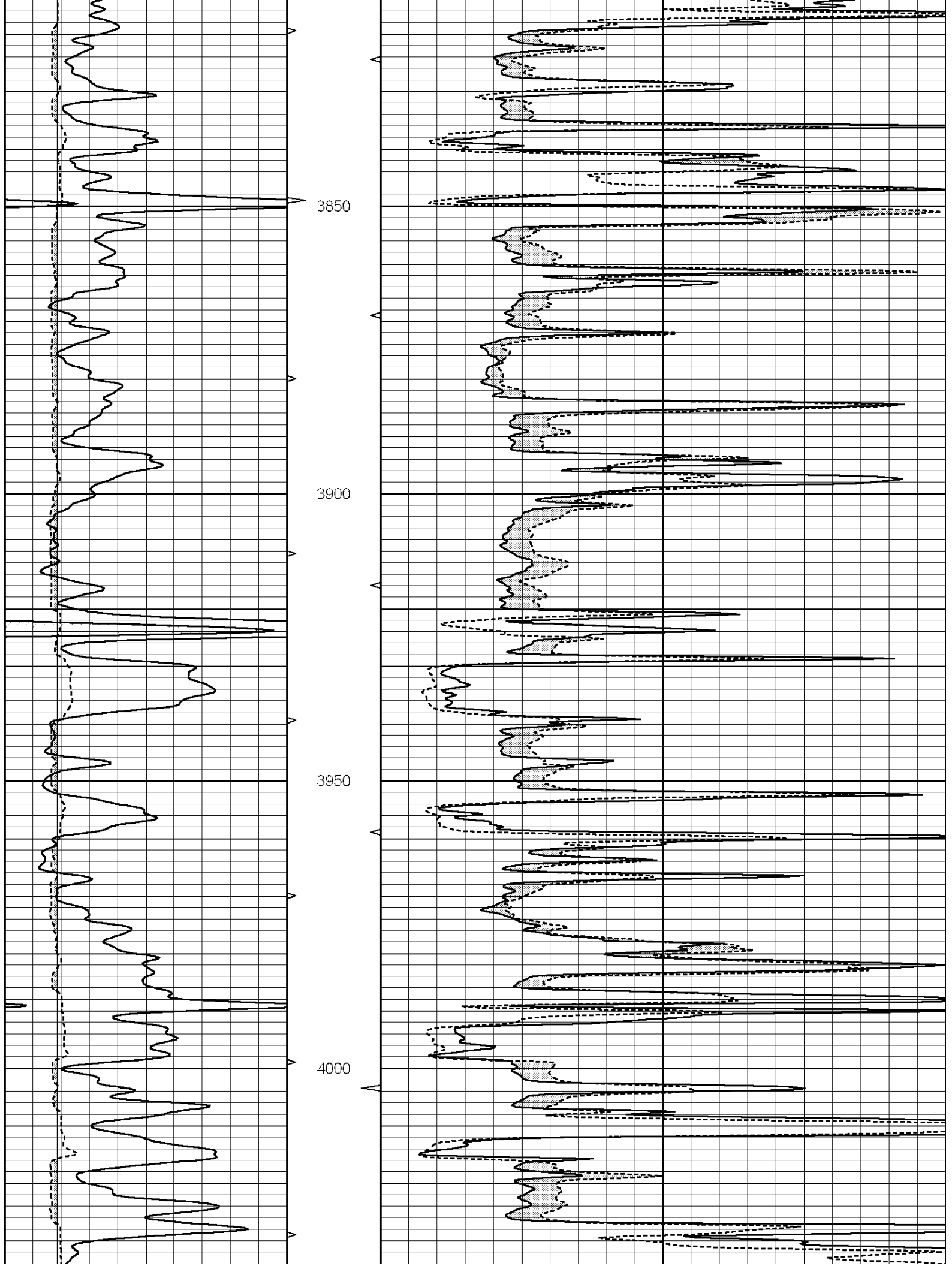
Comments

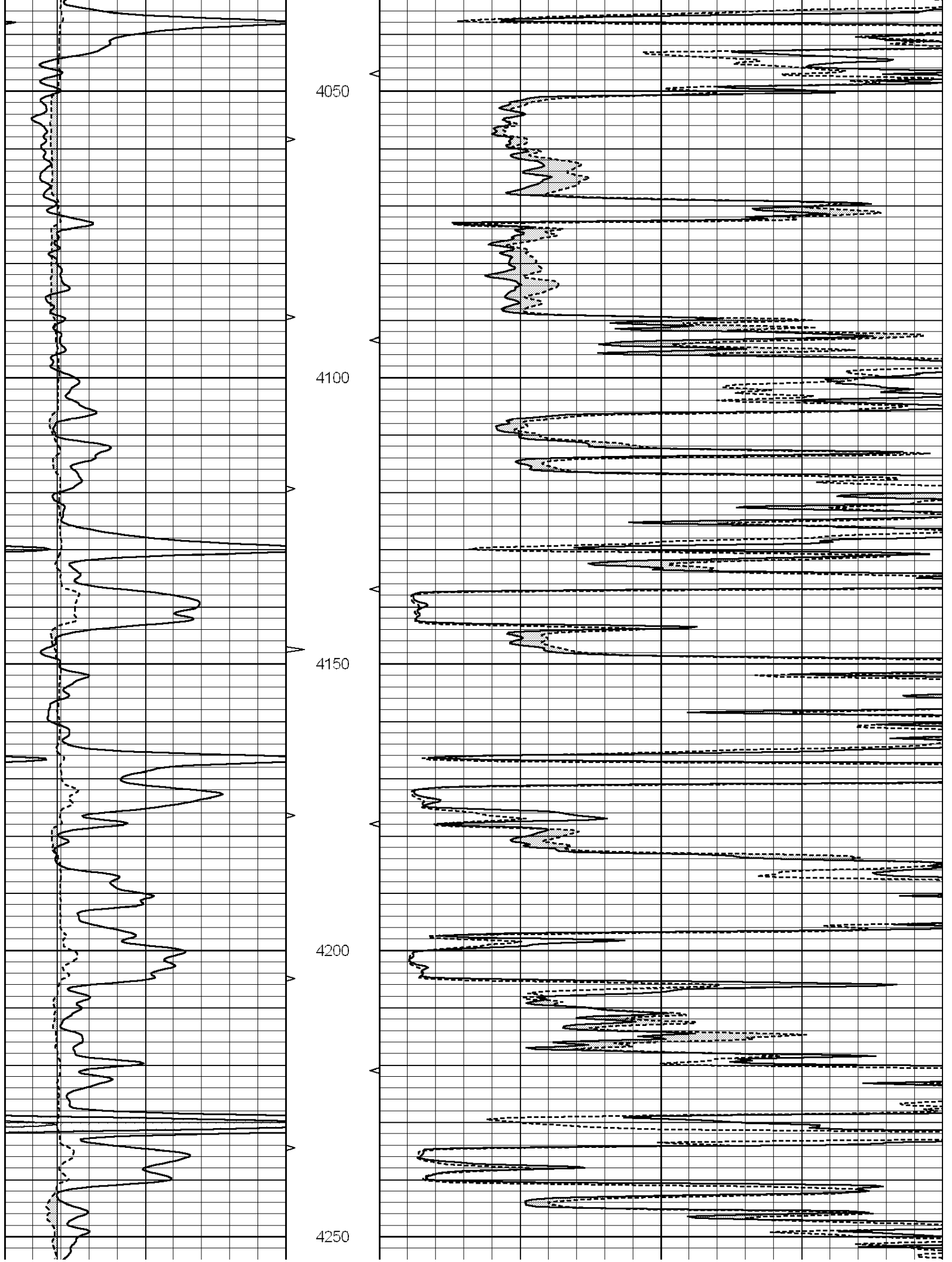
THANK YOU FOR USING SUPERIOR WELL SERVICE (785) 628-6395
DIRECTIONS
NESS CITY, KS - WEST TO NESS/LANE COUNTY LINE - 1 1/2 MILES WEST TO TURKEY RED RD
1/4 MILE WEST - SOUTH INTO ON WEST SIDE OF TANK BATTERY

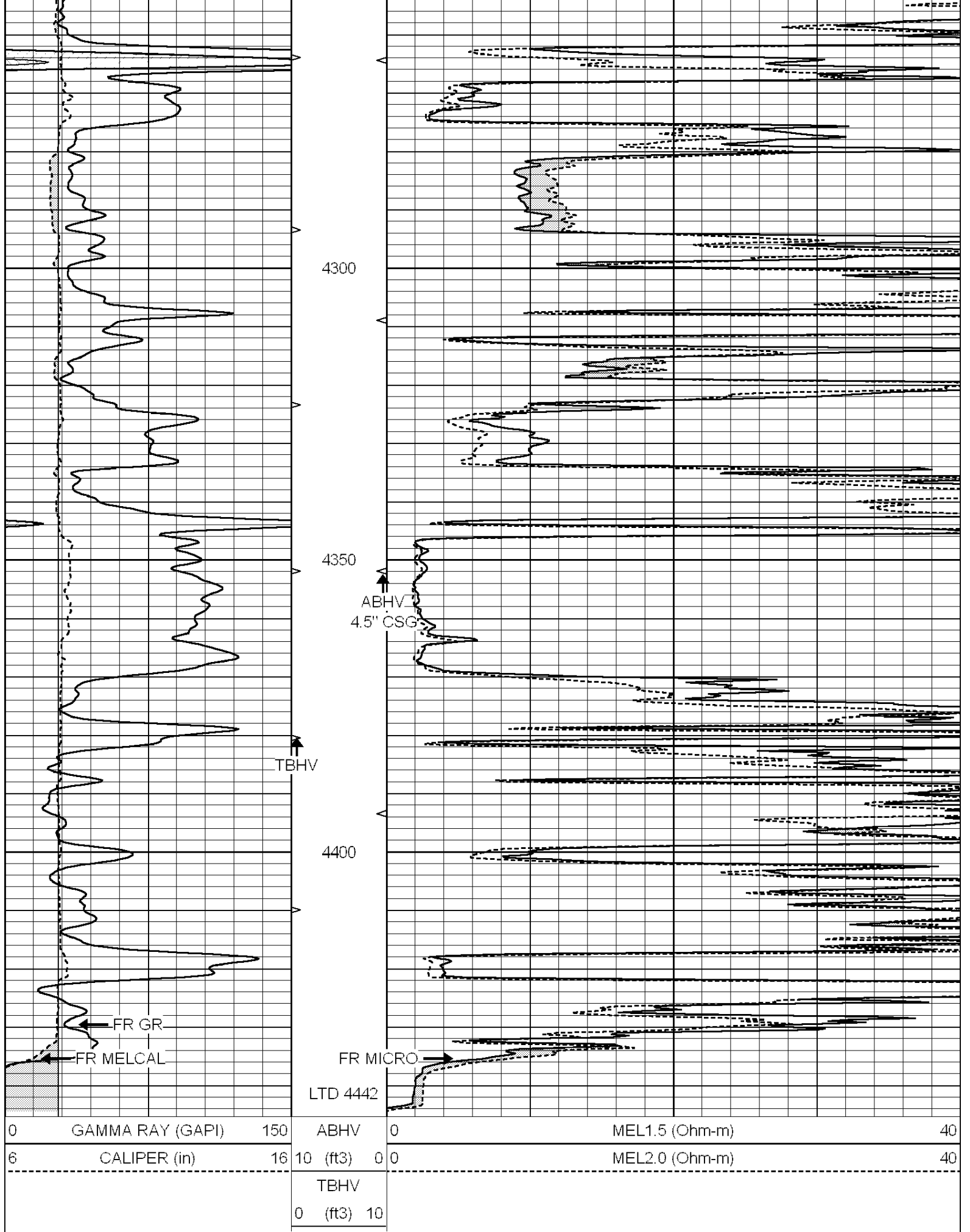
0	GAMMA RAY (GAPI)	150	ABHV	0	MEL1.5 (Ohm-m)	40
6	CALIPER (in)	16	10 (ft3)	0 0	MEL2.0 (Ohm-m)	40
			TBHV			
			0 (ft3)			











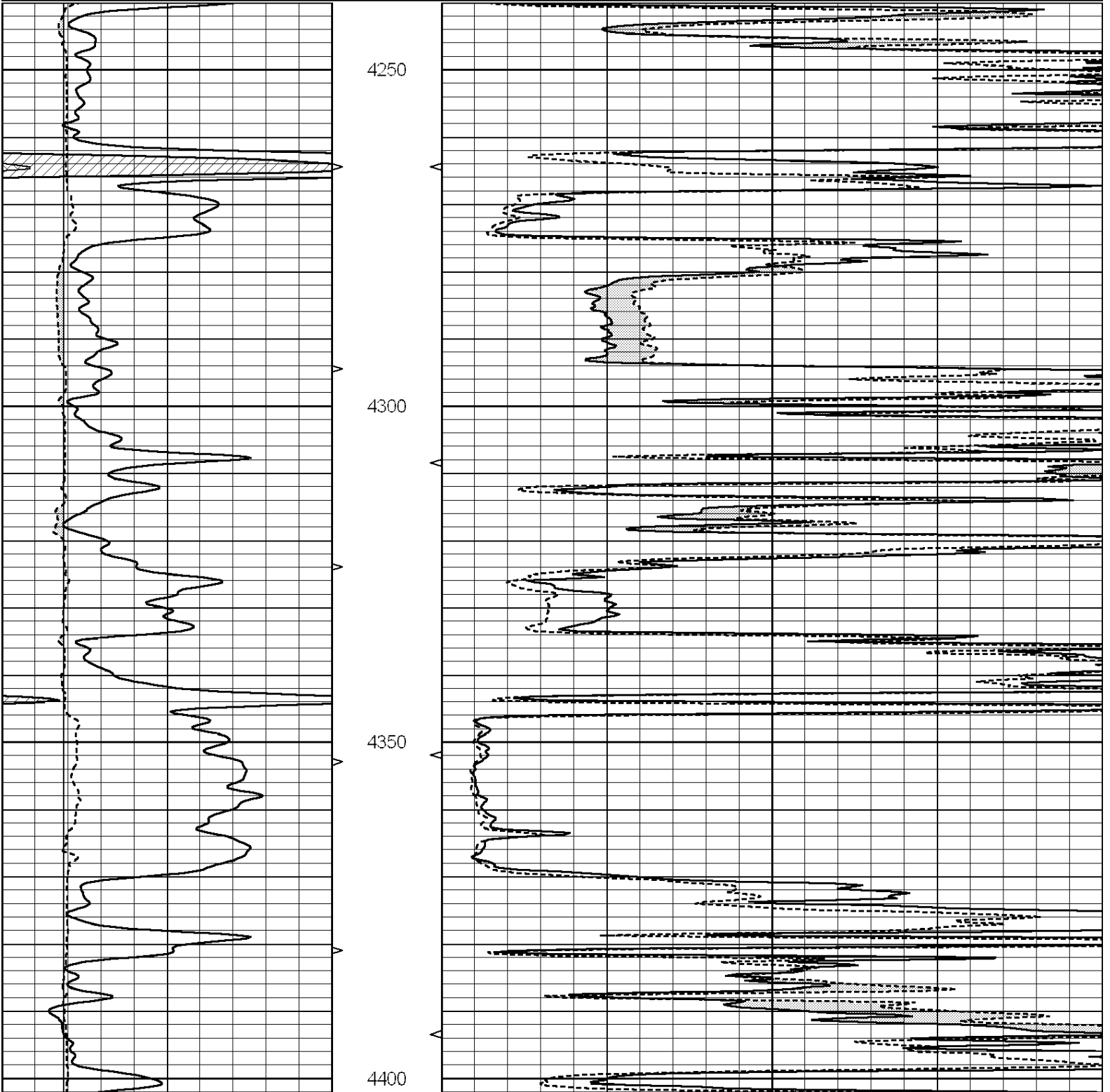


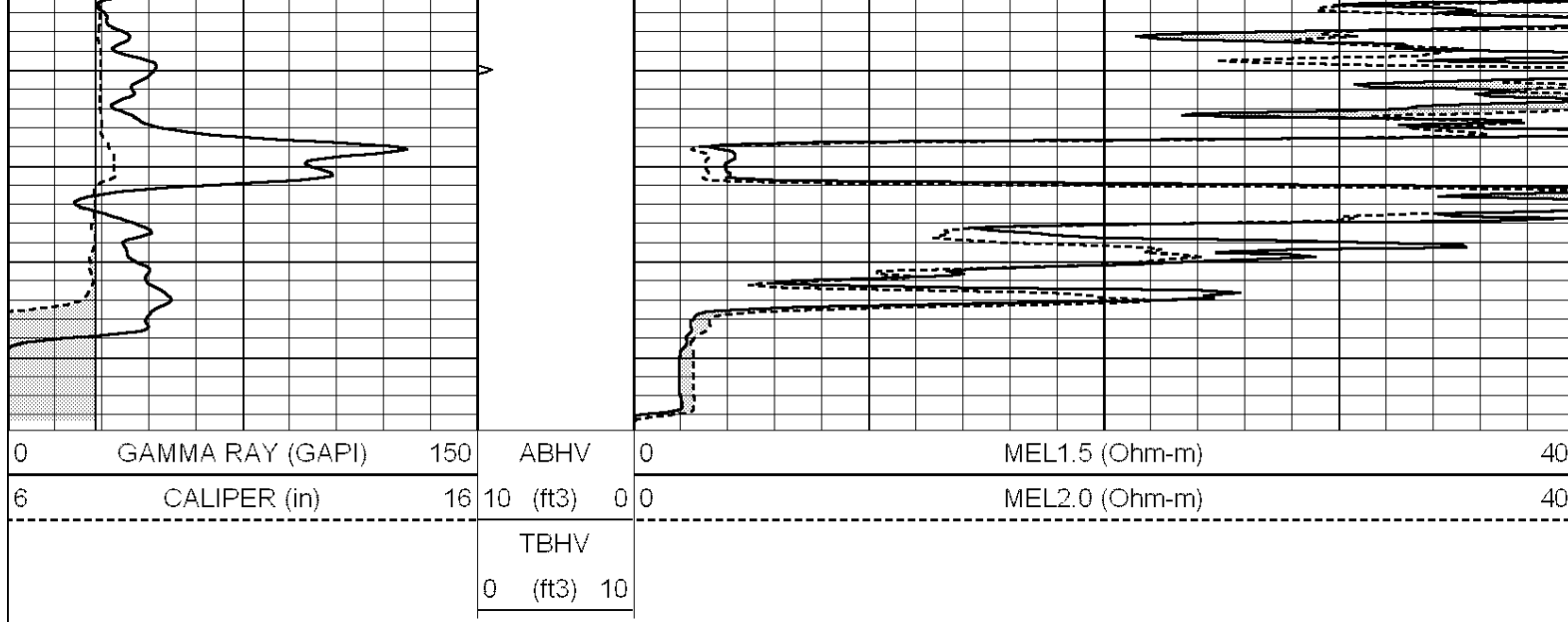
SUPERIOR
Hays,
Kansas

REPEAT SECTION

Database File: 009204ddn.db
 Dataset Pathname: pass4.1
 Presentation Format: _micro
 Dataset Creation: Wed May 23 05:47:51 2012 by Calc Open-Cased 090629
 Charted by: Depth in Feet scaled 1:240

0	GAMMA RAY (GAPI)	150	ABHV	0	MEL1.5 (Ohm-m)	40
6	CALIPER (in)	16	10 (ft3)	0	MEL2.0 (Ohm-m)	40
			TBHV			
			0 (ft3)	10		





Calibration Report

Database File: 009204ddn.db
 Dataset Pathname: pass5.1
 Dataset Creation: Wed May 23 05:45:41 2012 by Calc Open-Cased 090629

MICRO Calibration Report

Serial Number: MICRO6
 Tool Model: PROBE
 Performed: Wed May 23 05:16:50 2012

Caliper Calibration: Gain=6.253 Offset=-1.208
 References Low Cal High Cal
 Readings 5.800 13.000
 1.178 2.330

1.5" Calibration: Gain=30.075 Offset=-0.400
 References Low Cal High Cal
 Readings 0.000 20.000
 0.004 1.196

2" Calibration: Gain=30.041 Offset=0.000
 References Low Cal High Cal
 Readings 0.000 20.000
 0.006 0.913

Gamma Ray Calibration Report

Serial Number: #8
 Tool Model: OPEN
 Performed: Mon Jun 13 16:56:43 2011
 Calibrator Value: 150.0 GAPI
 Background Reading: 0.0 cps
 Calibrator Reading: 175.0 cps
 Sensitivity: 0.8371 GAPI/cps