



WIRELINE SERVICES, INC.
CHANDLER, KANSAS

**GAMMA RAY
NEUTRON
COMPLETION LOG**

Company SOUTHWINDS ENERGY, LLC
Well PRINCE #1
Field SORGHUM HOLLOW
County MONTGOMERY
State KANSAS

Location: 330° FILL & 690° FEL
API #: 15-135-32246-00-00
Other Services

SEC 2 TWP 33S RGE 13E
Elevation 980'

Perment Datum G.L.
Log Measured From G.L.
Drilling Measured From G.L.
Date 8-7-12
Run Number 1 NW
Depth Diller 1053.8'

Production Casing 4.5" @ TD @ @
Max. Recorded Temp
Estimated Cement Top
Calculated Cement Top
Amount & Type Cement
Drilling Contractor
Equipment Number
Location
Recorded By
Witnessed By

Bottom Logged Interval FULL
Fluid Level WATER

Top Log Interval 0
Bottom Logged Interval 1053.8'

<<< Fold Here >>>

All interpretations are opinions based on inferences from electrical or other measurements and we cannot and do not guarantee the accuracy or correctness of any interpretation, and we shall not, except in the case of gross or willful negligence on our part, be liable or responsible for any loss, costs, damages, or expenses incurred or sustained by anyone resulting from any interpretation made by any of our officers, agents or employees. These interpretations are also subject to our general terms and conditions set out in our current Price Schedule.

Comments

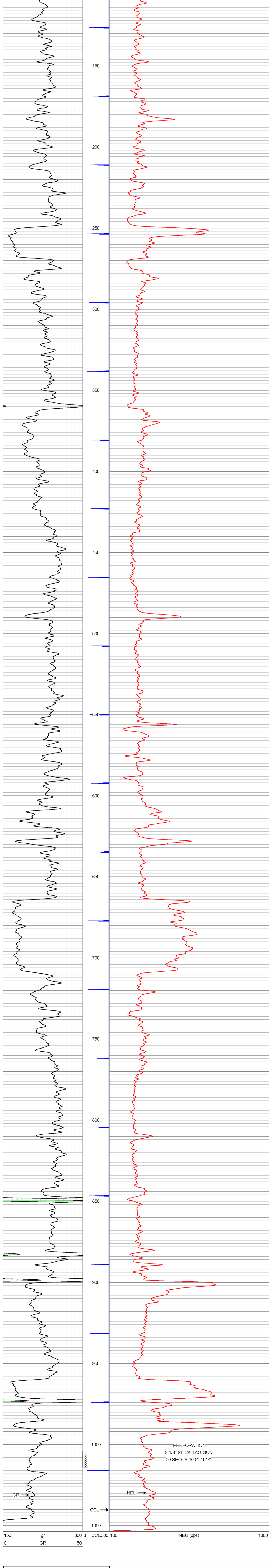
THANK YOU

Sensor	Offset (ft)	Schematic	Description	Len (ft)	OD (in)	Wt (lb)
GR	7.59		GR-TITAN_169 (TIT169_001) Titan 1 11/16" Gamma Ray	4.75	1.69	20.00
CCL	5.05		CCL-TITAN_169 (TIT169) Titan 1 11/16" Logging CCL	1.83	1.69	7.50
NEU	0.63		NEU-TITAN (TIT801) TITAN 1 11/16" Neutron	4.33	1.69	25.00

Dataset: prince #1 db: field/well/run1/pass1
Total Length: 10.92 ft
Total Weight: 52.50 lb
O.D.: 1.69 in

Database File: g:\prince #1 db
Dataset Pathname: pass1
Presentation Format: gr-n-ccl
Dataset Creation: Tue Aug 07 11:04:50 2012 by Log Std Casedhole 09061
Charted by: Depth in Feet scaled 1:240

150	gr	300	3	CCLD.05	100	NEU (cps)	1800
0	GR	150					



150 gr 300 3 CCLD.05 100 NEU (cps) 1800
0 GR 150