



SUPERIOR
Hays,
Kansas

**DUAL
INDUCTION
LOG**

Company RITCHIE EXPLORATION, INC.
Well #1 CKG-SCHLITZ
Field CKG
County SHERIDAN
State KANSAS

Company RITCHIE EXPLORATION, INC.
Well #1 CKG-SCHLITZ
Field CKG
County SHERIDAN State KANSAS

Location: API # : 15-179-21299-0000
1120' FNL & 200' FEL
SEC 8 TWP 9S RGE 30W
Permanent Datum GROUND LEVEL Elevation 2946
Log Measured From KELLY BUSHING 5' A.G.L.
Drilling Measured From KELLY BUSHING
Elevation
K.B. 2951
D.F. 2949
G.L. 2946

Date	3/31/12
Run Number	ONE
Depth Driller	4655
Depth Logger	4659
Bottom Logged Interval	4657
Top Log Interval	00
Casing Driller	8 5/8" @ 305
Casing Logger	305
Bit Size	7 7/8
Type Fluid in Hole	CHEMICAL MUD
Density / Viscosity	9.2/65
pH / Fluid Loss	9.0/9.6
Source of Sample	FLOWLINE
Rim @ Meas. Temp	1.4 @ 80F
Rmf @ Meas. Temp	1.05 @ 80F
Rmc @ Meas. Temp	1.68 @ 80F
Source of Rmf / Rmc	MEASURED
Rim @ BHT	.91 @ 122F
Time Circulation Stopped	2 HOURS
Time Logger on Bottom	
Maximum Recorded Temperature	122F
Equipment Number	680
Location	HAYS, KS.
Recorded By	JASON CAPPELLUCCI
Witnessed By	BOB PETERSON

<<< Fold Here >>>

All interpretations are opinions based on inferences from electrical or other measurements and we cannot and do not guarantee the accuracy or correctness of any interpretation, and we shall not, except in the case of gross or willful negligence on our part, be liable or responsible for any loss, costs, damages, or expenses incurred or sustained by anyone resulting from any interpretation made by any of our officers, agents or employees. These interpretations are also subject to our general terms and conditions set out in our current Price Schedule.

Comments

THANK YOU FOR USING SUPERIOR WELL SERVICE (785) 628-6395
DIRECTIONS
I-70 & CAMPUS EXIT - 5 N. TO RD. E - 3 E. TO ANGELUS - 7 N. - W. INTO



SUPERIOR
Hays,
Kansas

MAIN SECTION

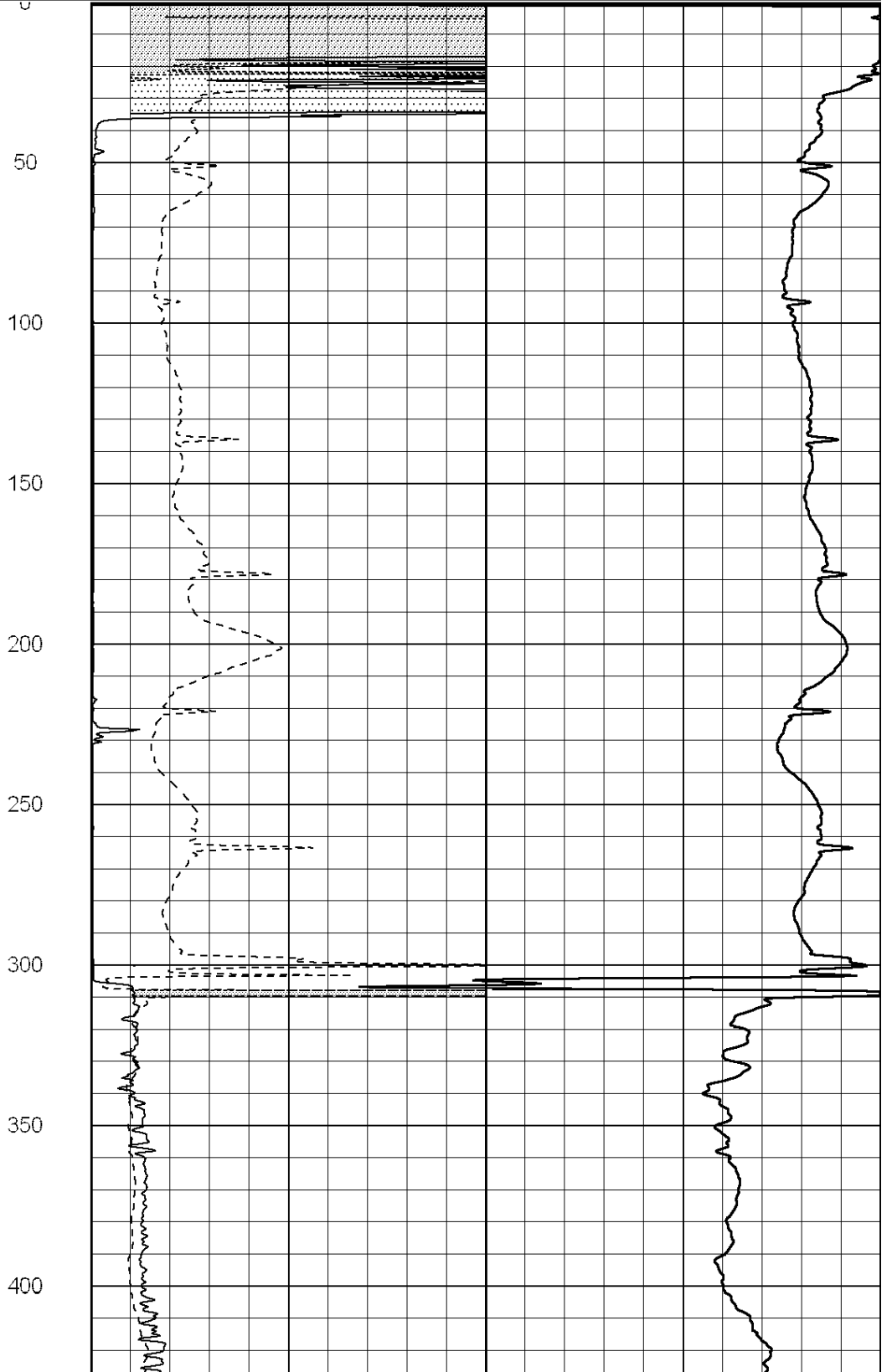
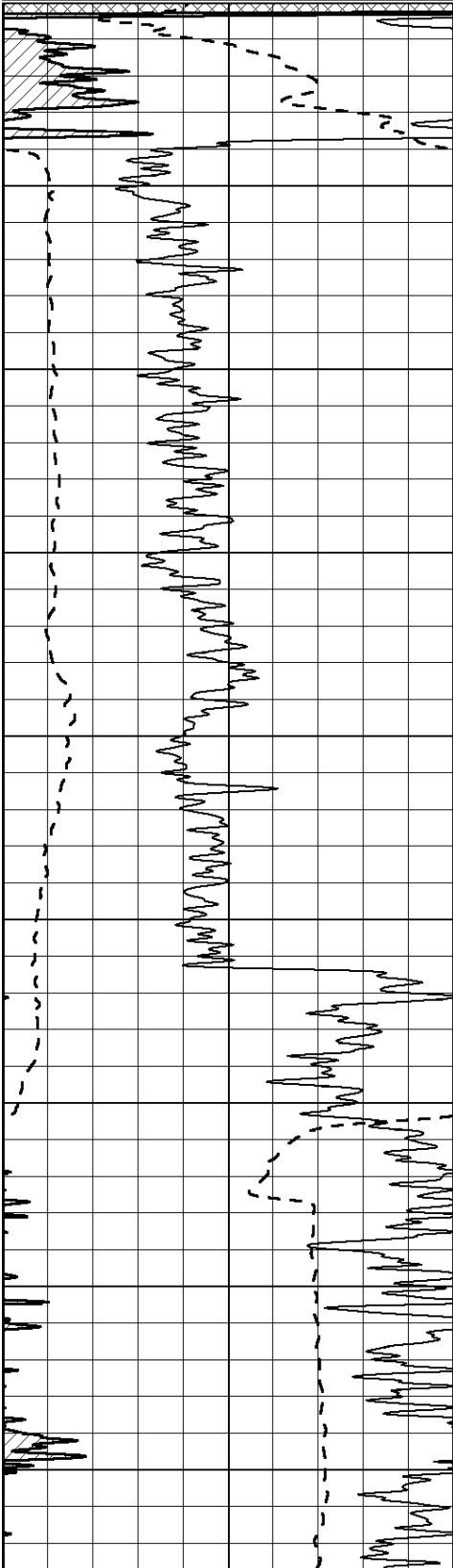
Database File: 008832ddn.db
 Dataset Pathname: pass4.2
 Presentation Format: _dil2
 Dataset Creation: Sun Apr 01 01:00:51 2012 by Calc Open-Cased 090629
 Charted by: Depth in Feet scaled 1:600

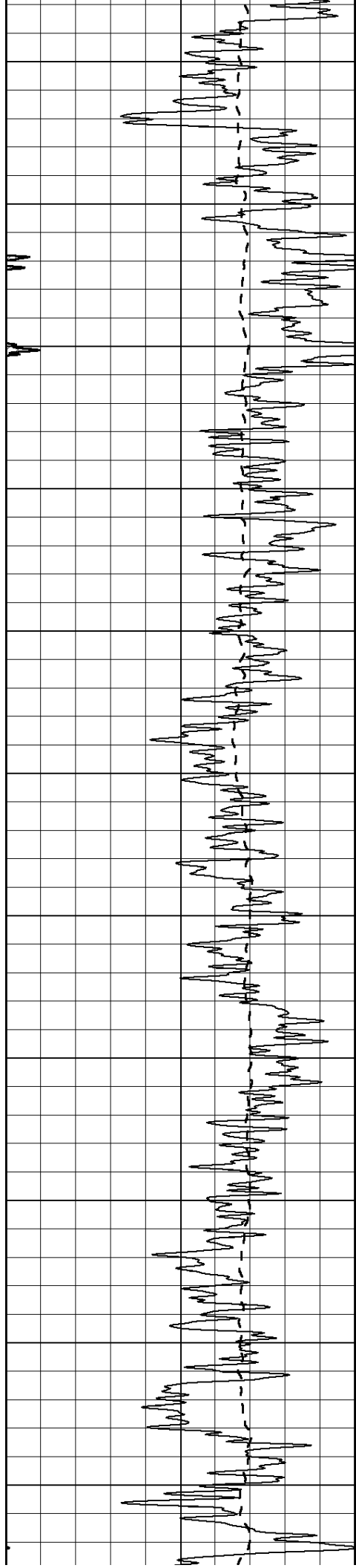
0	Gamma Ray (GAPI)	150
-100	SP (mV)	100

0	RLL3 (Ohm-m)	50
0	Deep Induction (Ohm-m)	50

1000	CILD (mmho/m)	0
------	---------------	---

50	RILD X10 (Ohm-m)	500
50	RLL3 X10 (Ohm-m)	500





450

500

550

600

650

700

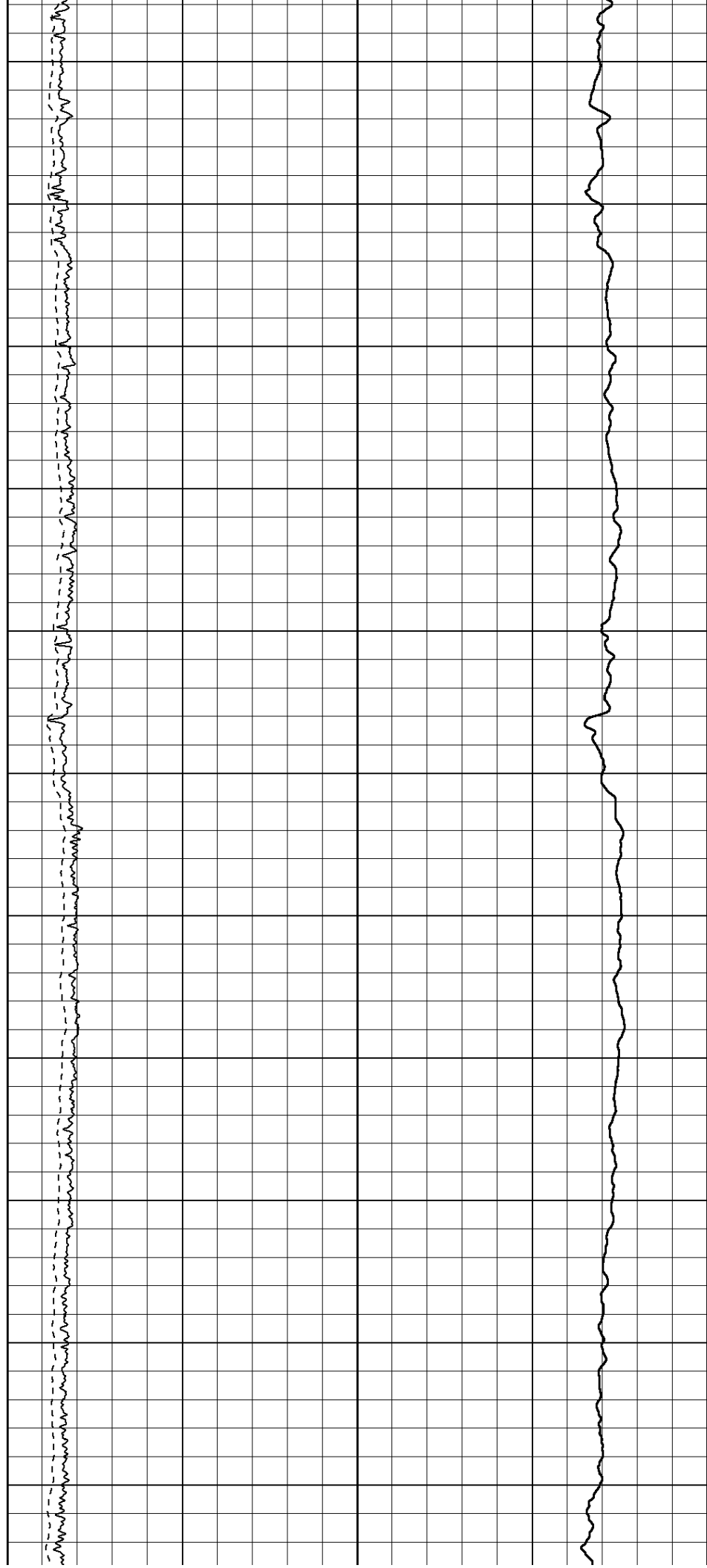
750

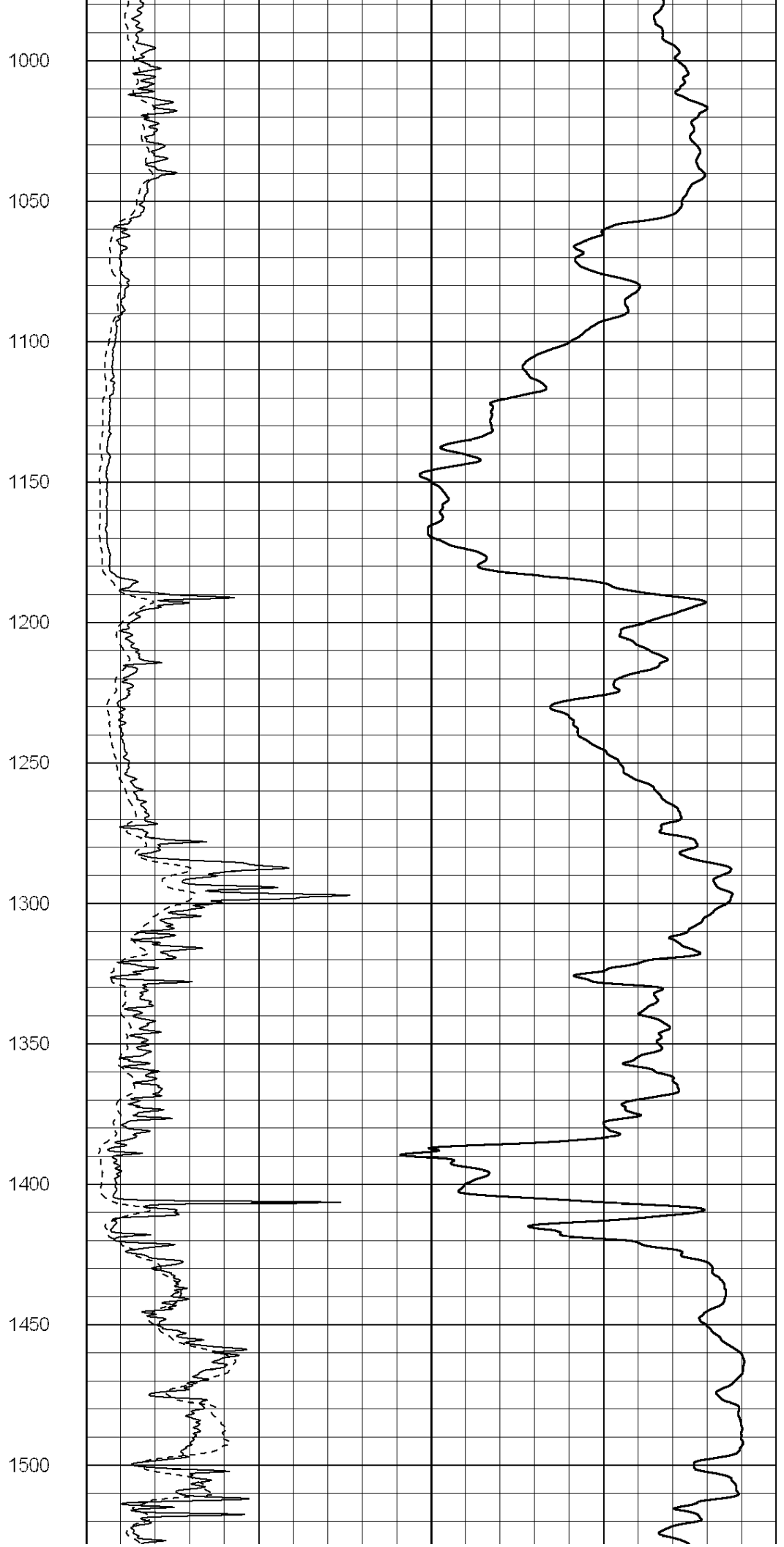
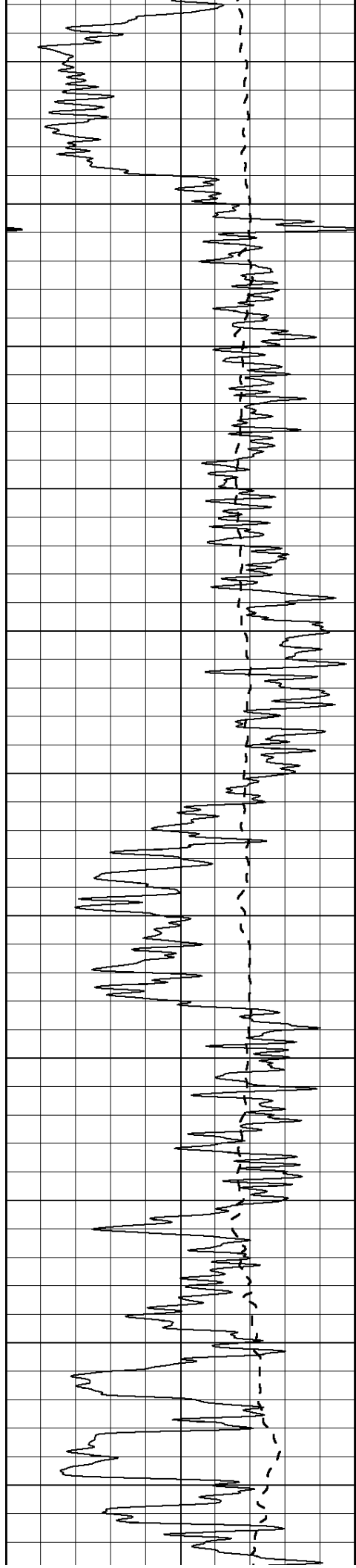
800

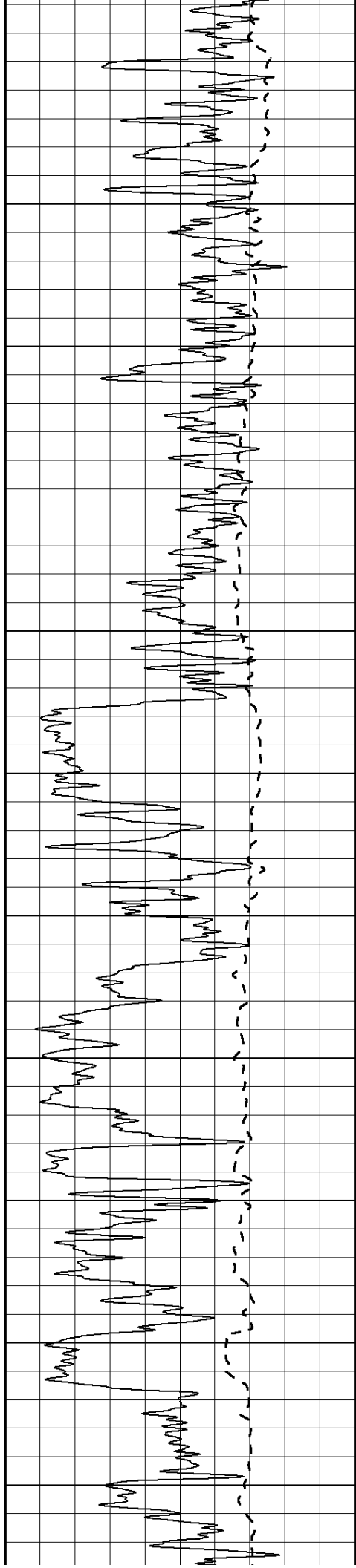
850

900

950







1550

1600

1650

1700

1750

1800

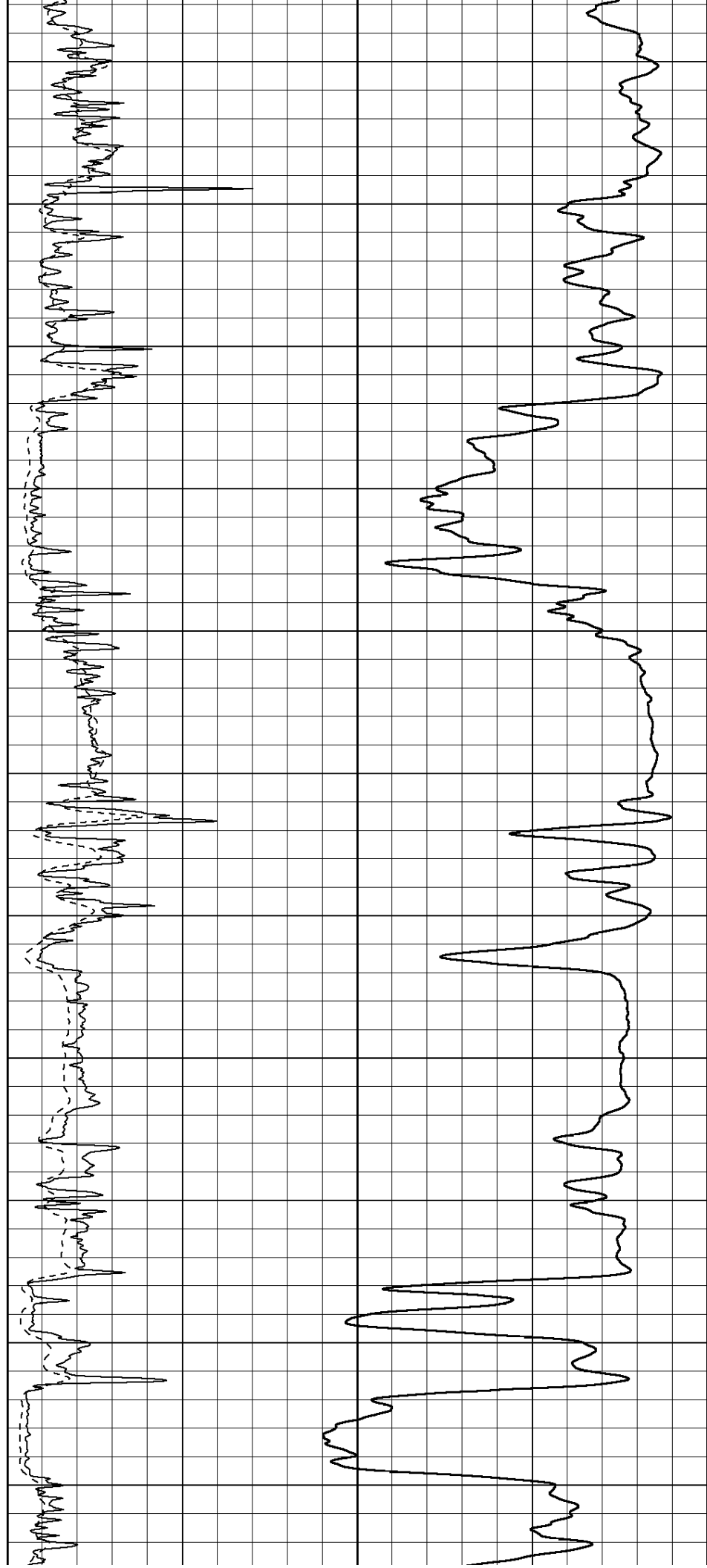
1850

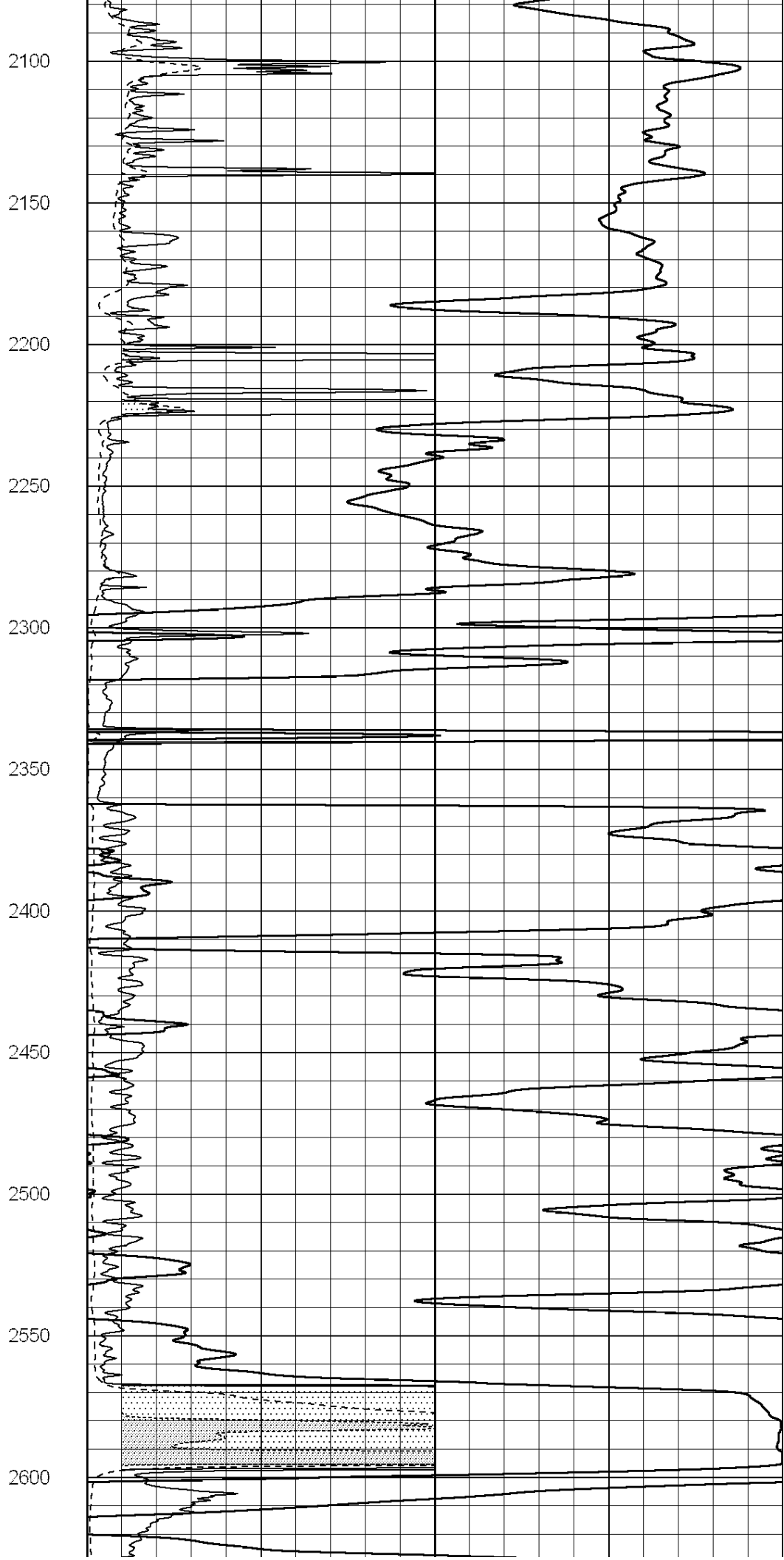
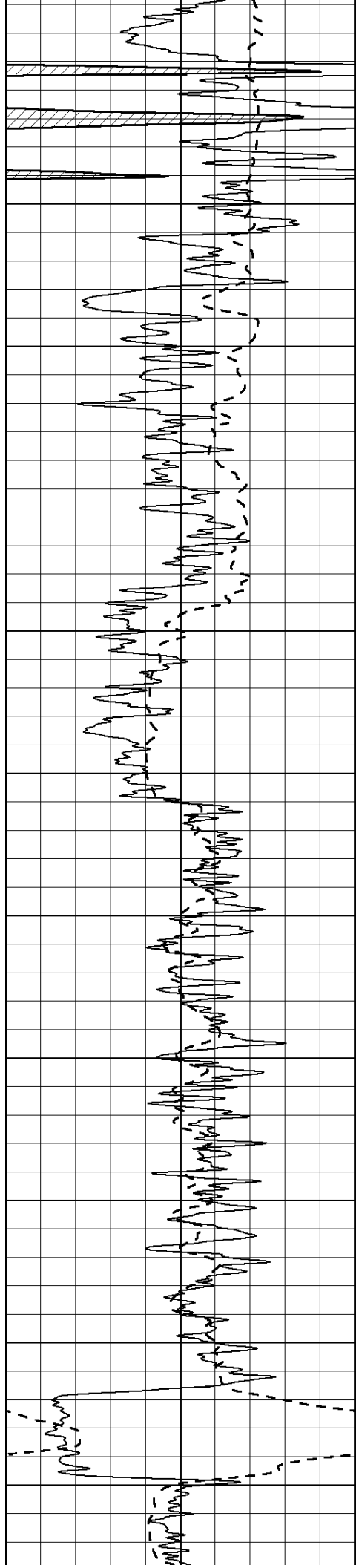
1900

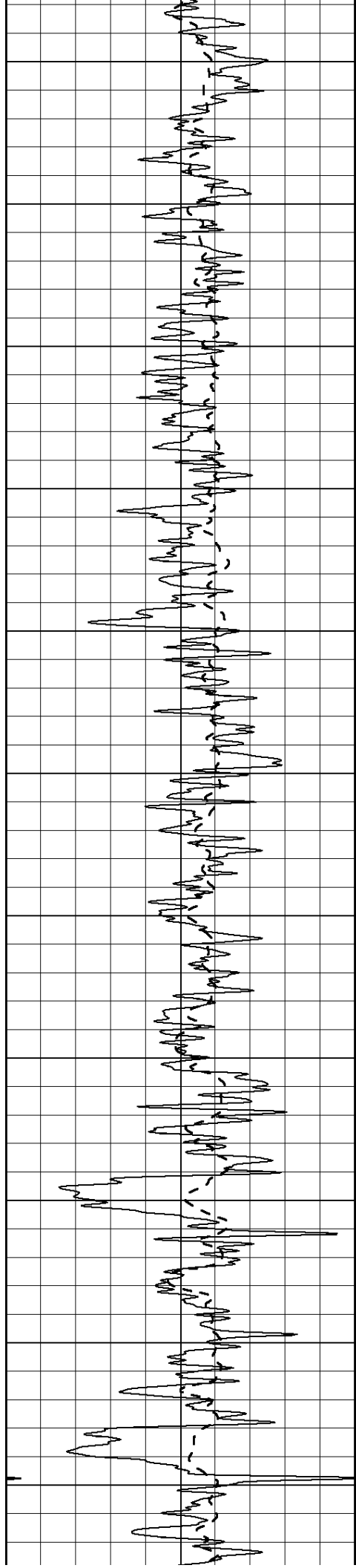
1950

2000

2050







2650

2700

2750

2800

2850

2900

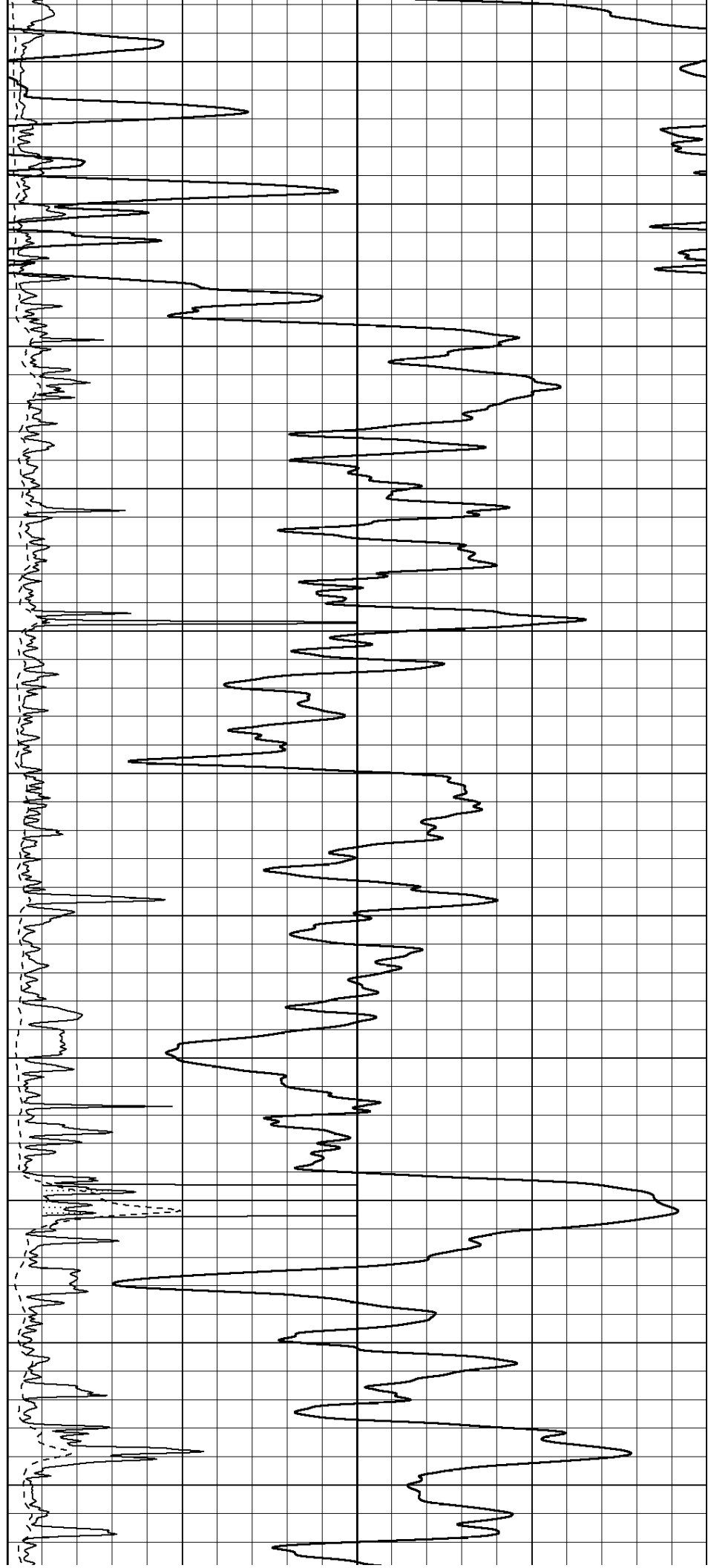
2950

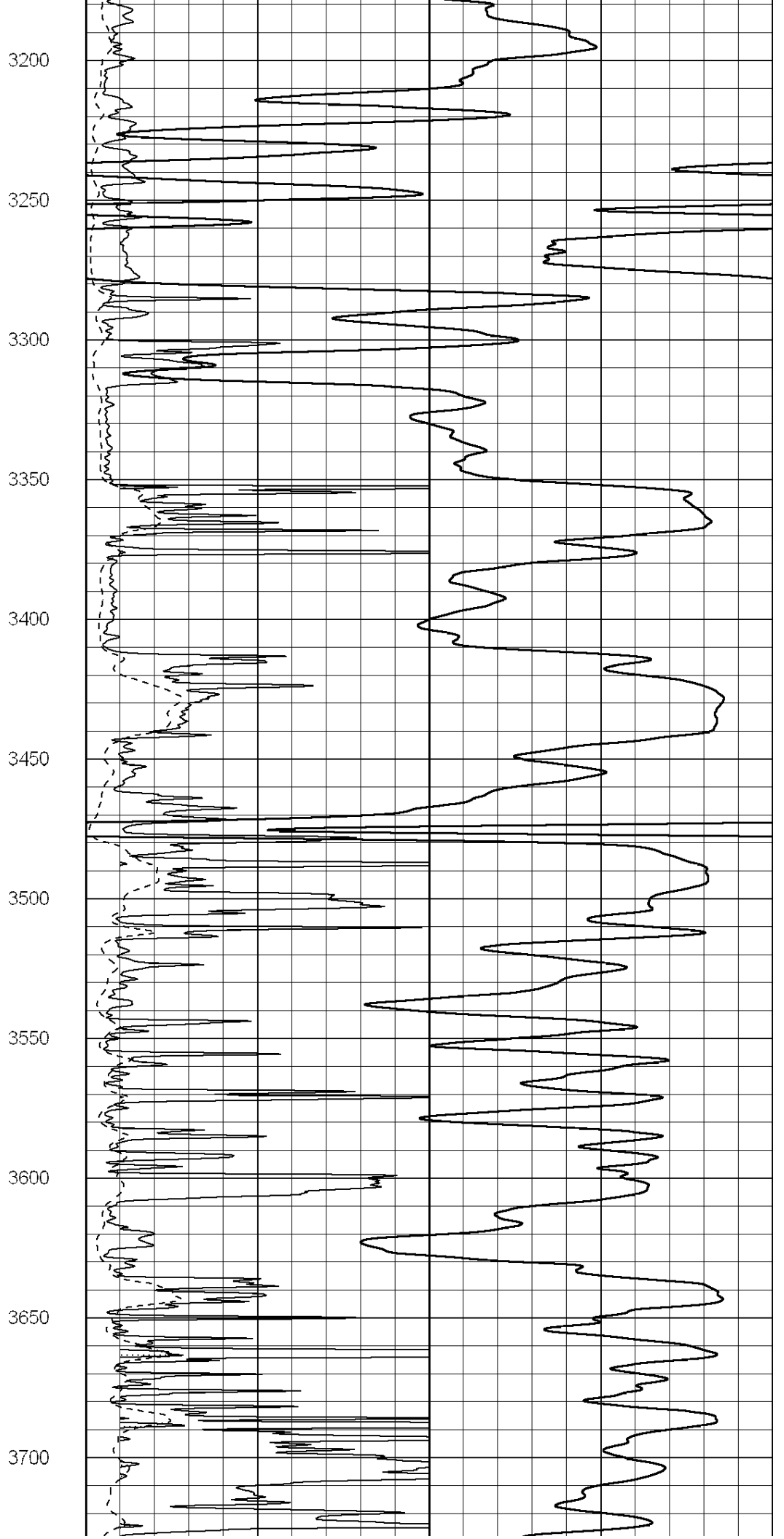
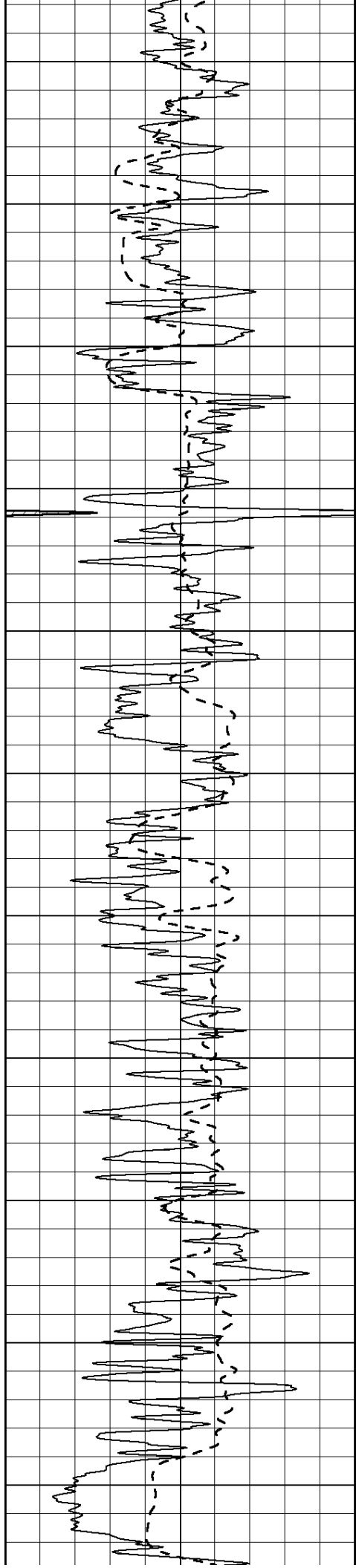
3000

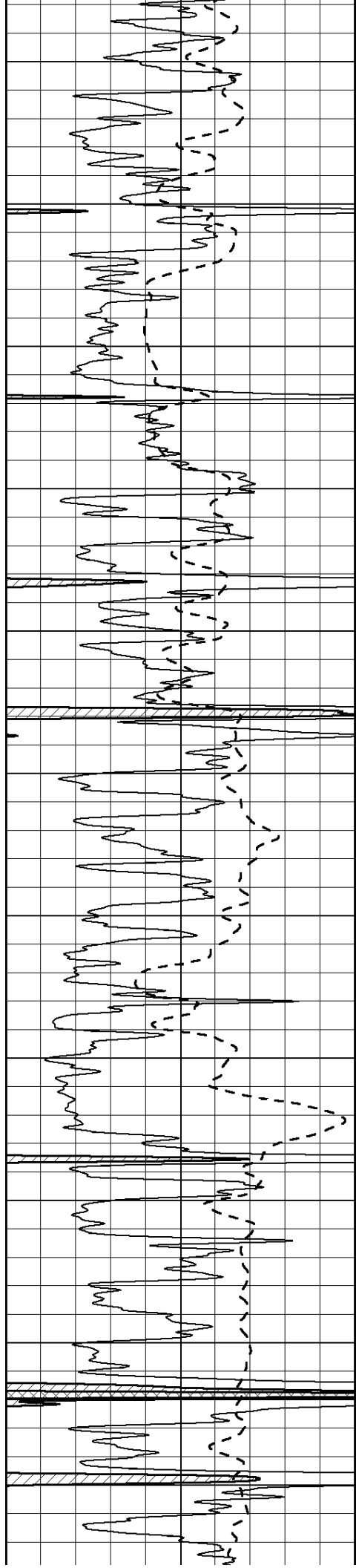
3050

3100

3150







3750

3800

3850

3900

3950

4000

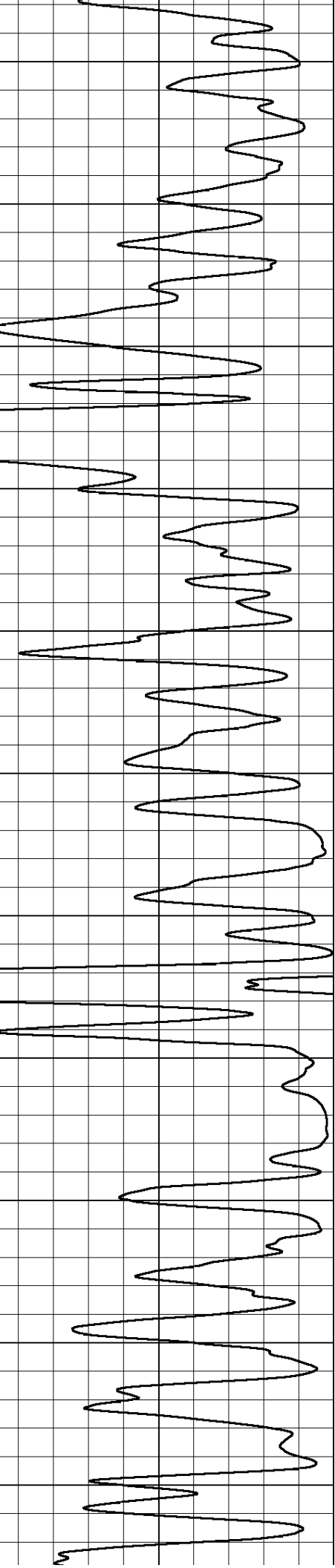
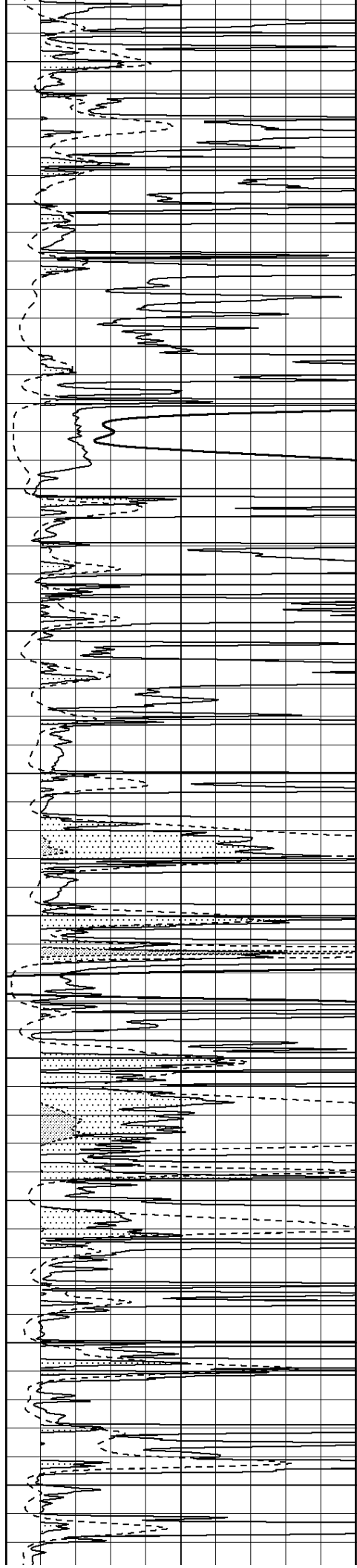
4050

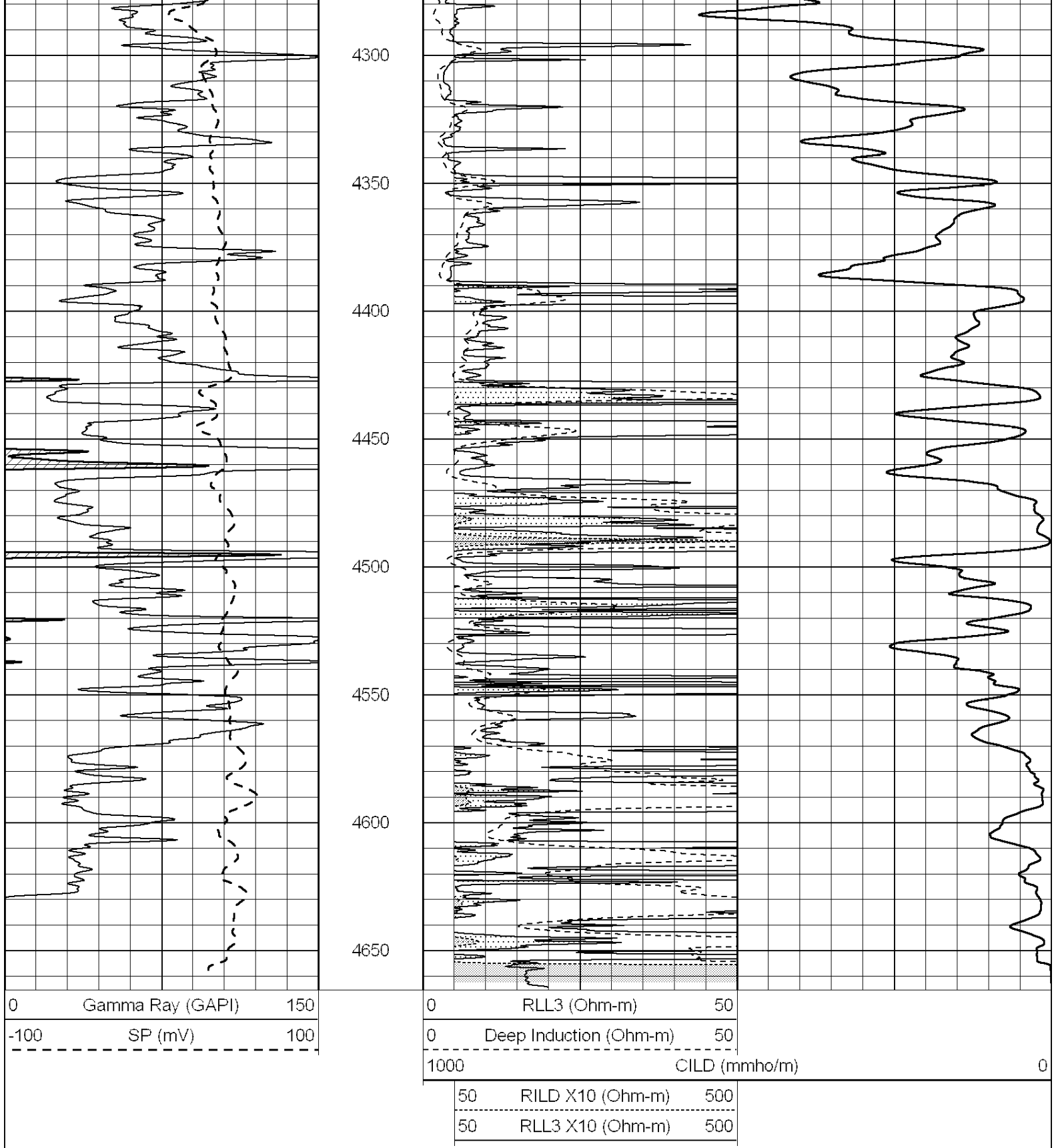
4100

4150

4200

4250





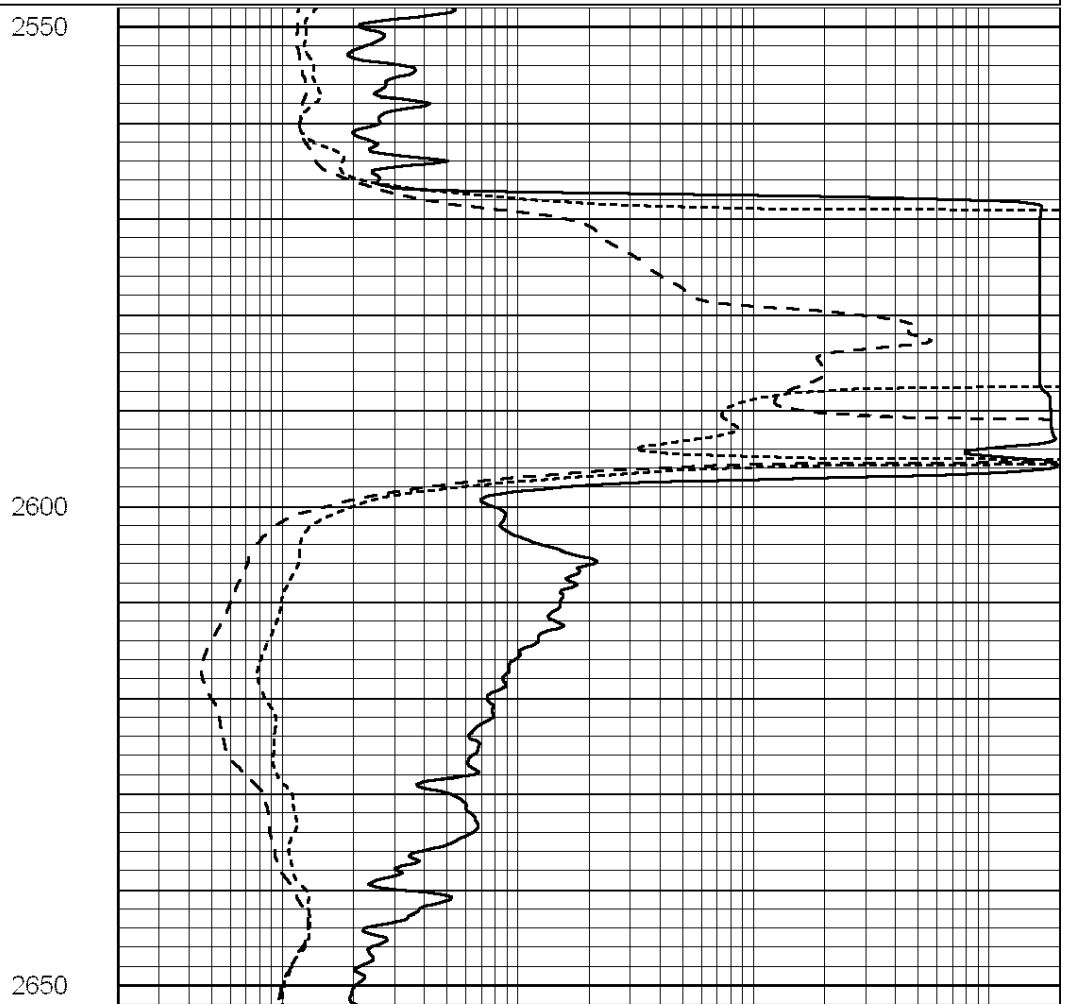
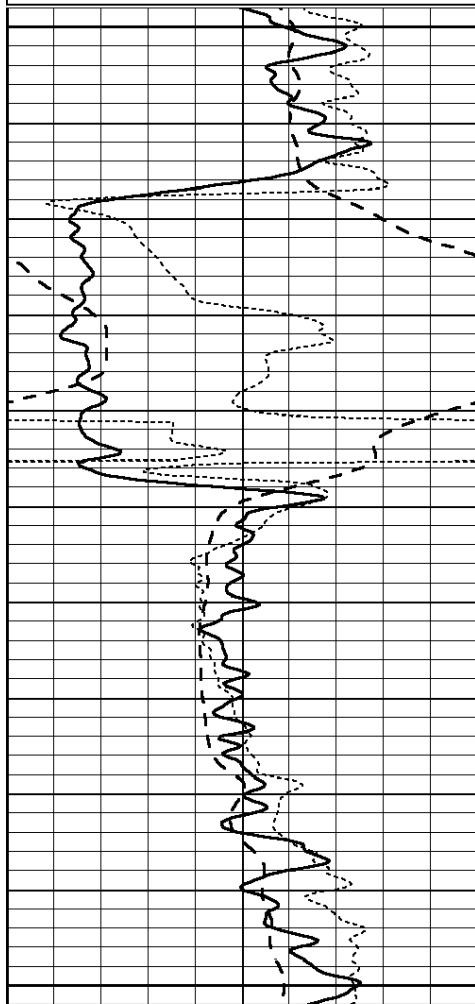
SUPERIOR
Hays,
Kansas

ANHYDRITE

Database File: 008832ddn.db
 Dataset Pathname: pass4.3
 Presentation Format: _dil
 Dataset Creation: Sun Apr 01 00:26:35 2012 by Calc Open-Cased 090629

0	GAMMA RAY (GAPI)	150
-100	SP (mV)	100
-250	Rxo/Rt	50

0.2	SHALLOW GUARD (Ohm-m)	2000
0.2	MEDIUM INDUCTION (Ohm-m)	2000
0.2	DEEP INDUCTION (Ohm-m)	2000



0	GAMMA RAY (GAPI)	150
-100	SP (mV)	100
-250	Rxo/Rt	50

0.2	SHALLOW GUARD (Ohm-m)	2000
0.2	MEDIUM INDUCTION (Ohm-m)	2000
0.2	DEEP INDUCTION (Ohm-m)	2000



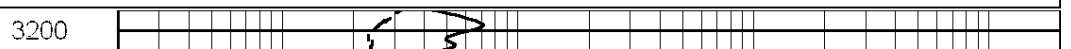
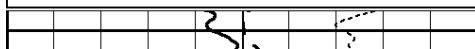
SUPERIOR
Hays,
Kansas

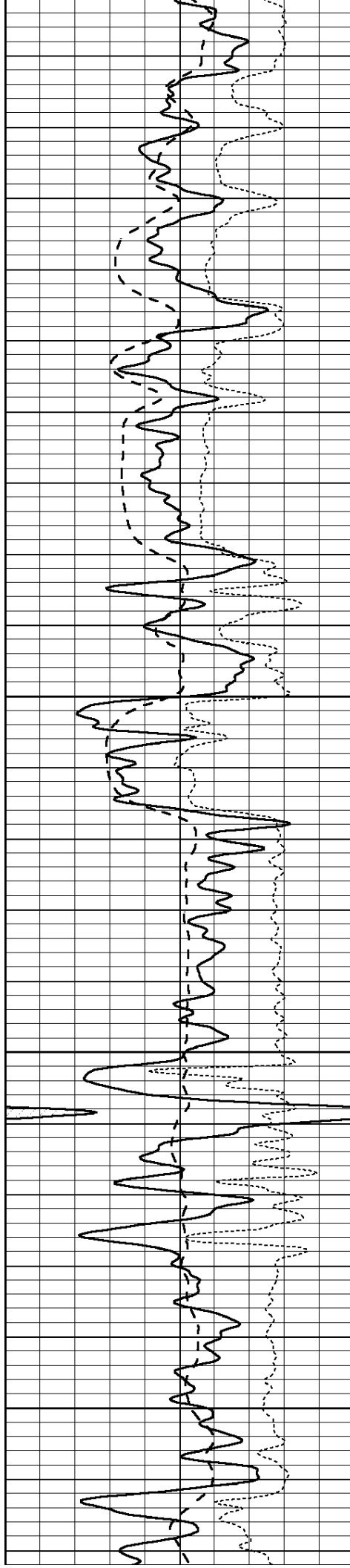
MAIN SECTION

Database File: 008832ddn.db
 Dataset Pathname: pass4.1
 Presentation Format: _dil
 Dataset Creation: Sun Apr 01 00:16:31 2012 by Calc Open-Cased 090629
 Charted by: Depth in Feet scaled 1:240

0	GAMMA RAY (GAPI)	150
-100	SP (mV)	100
-250	Rxo/Rt	50

0.2	SHALLOW GUARD (Ohm-m)	2000
0.2	MEDIUM INDUCTION (Ohm-m)	2000
0.2	DEEP INDUCTION (Ohm-m)	2000



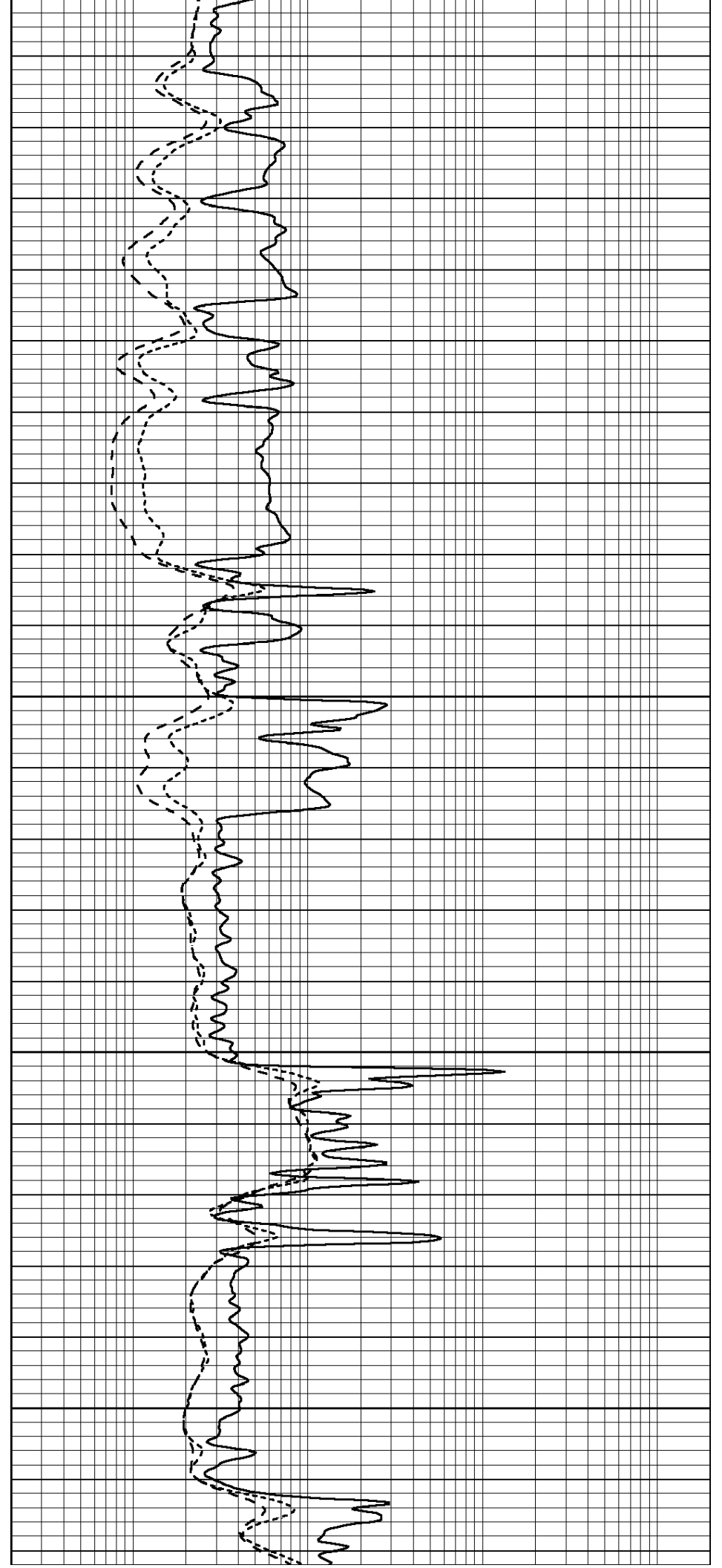


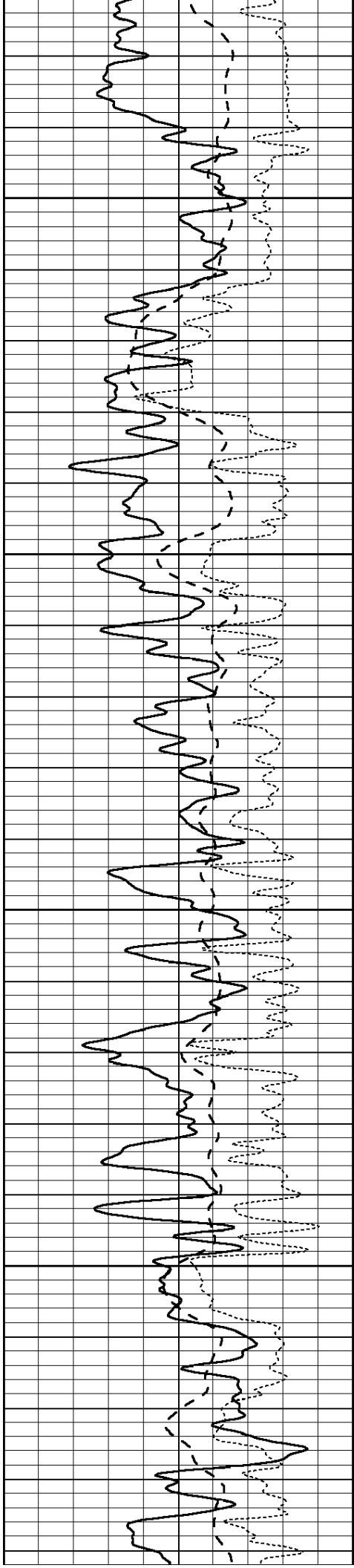
3250

3300

3350

3400



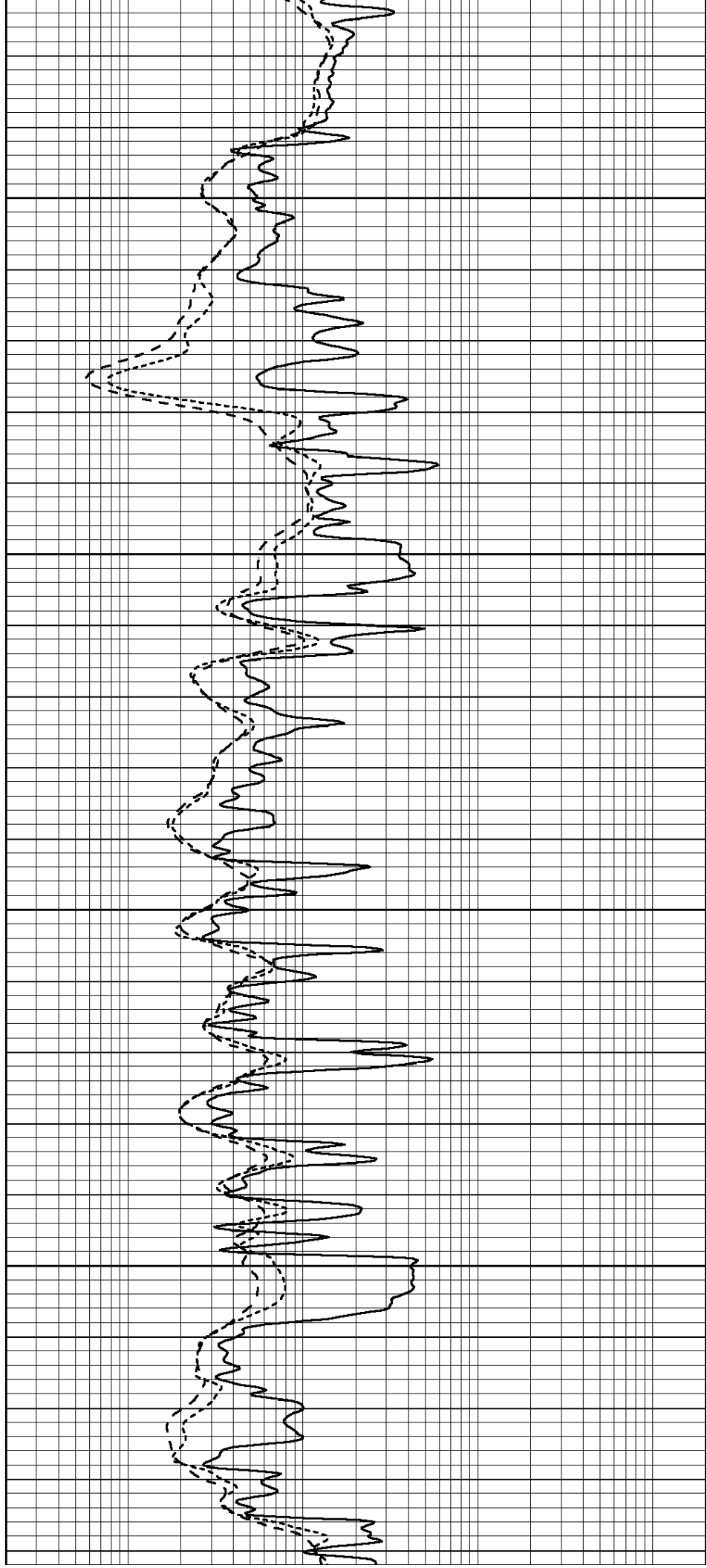


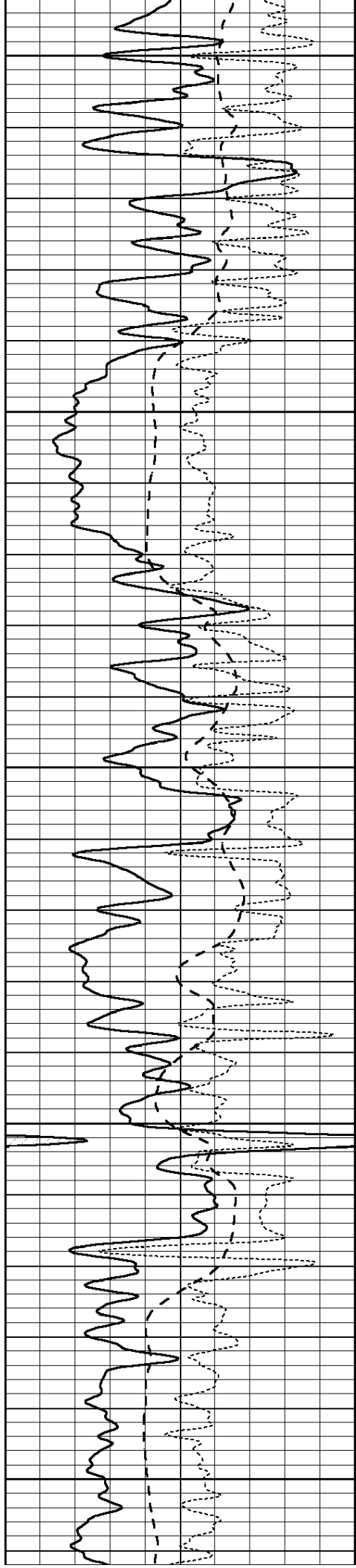
3450

3500

3550

3600





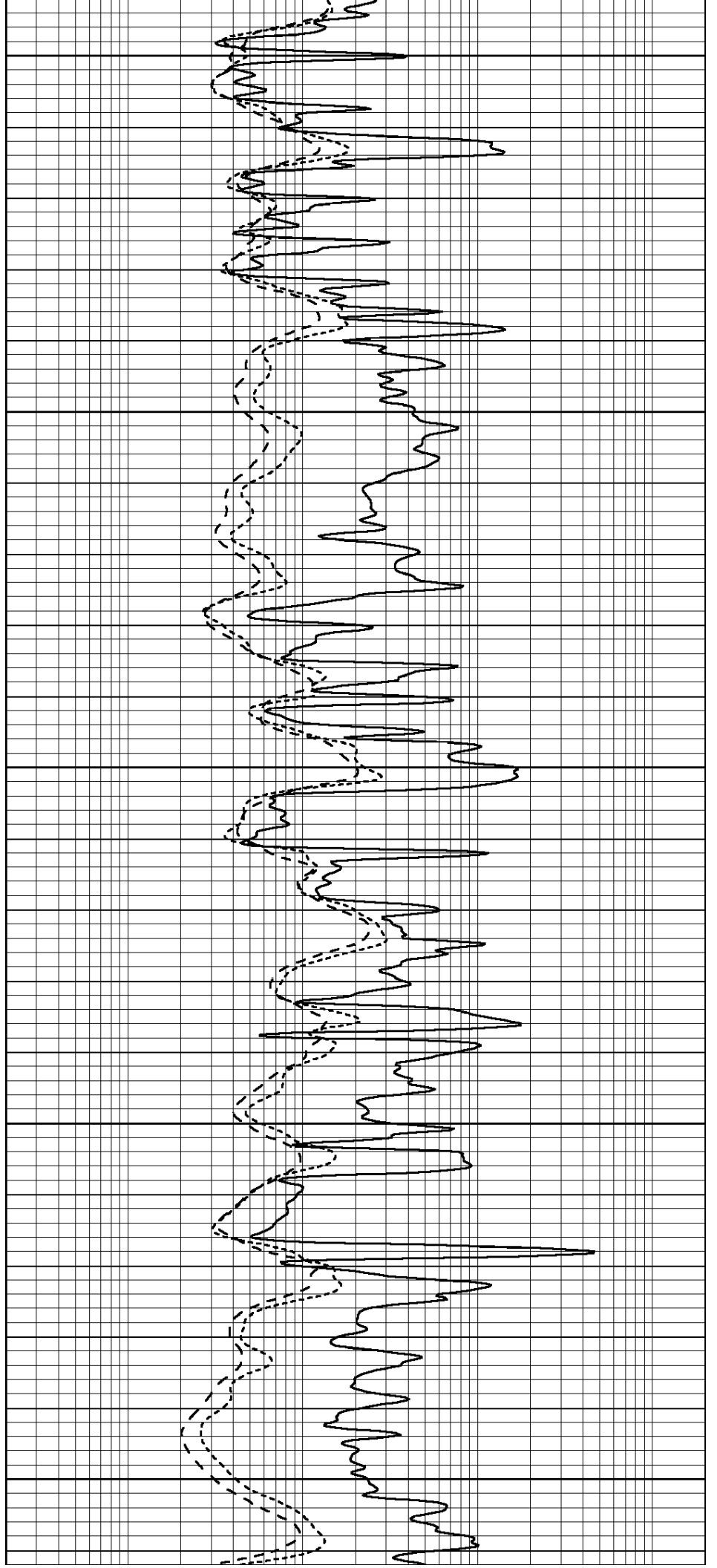
3650

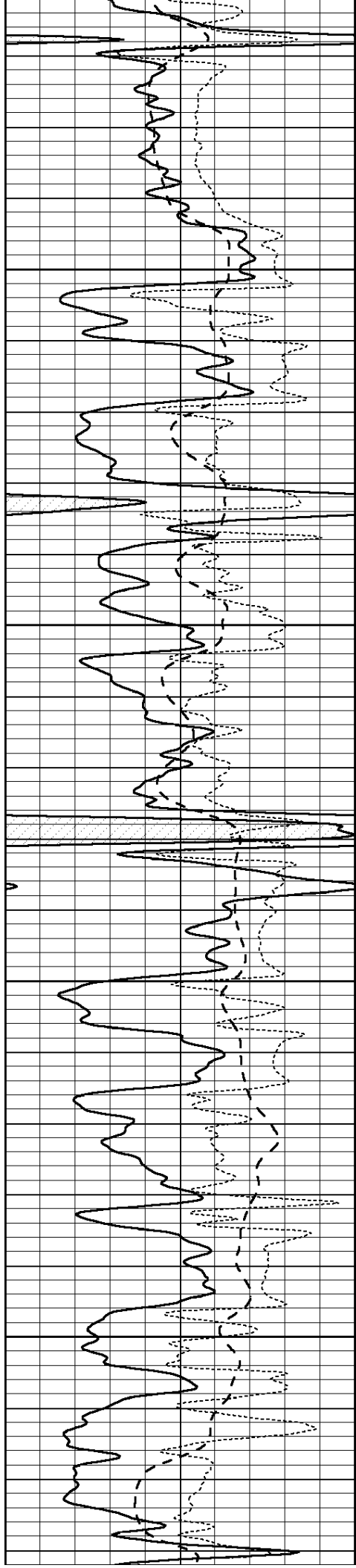
3700

3750

3800

3850



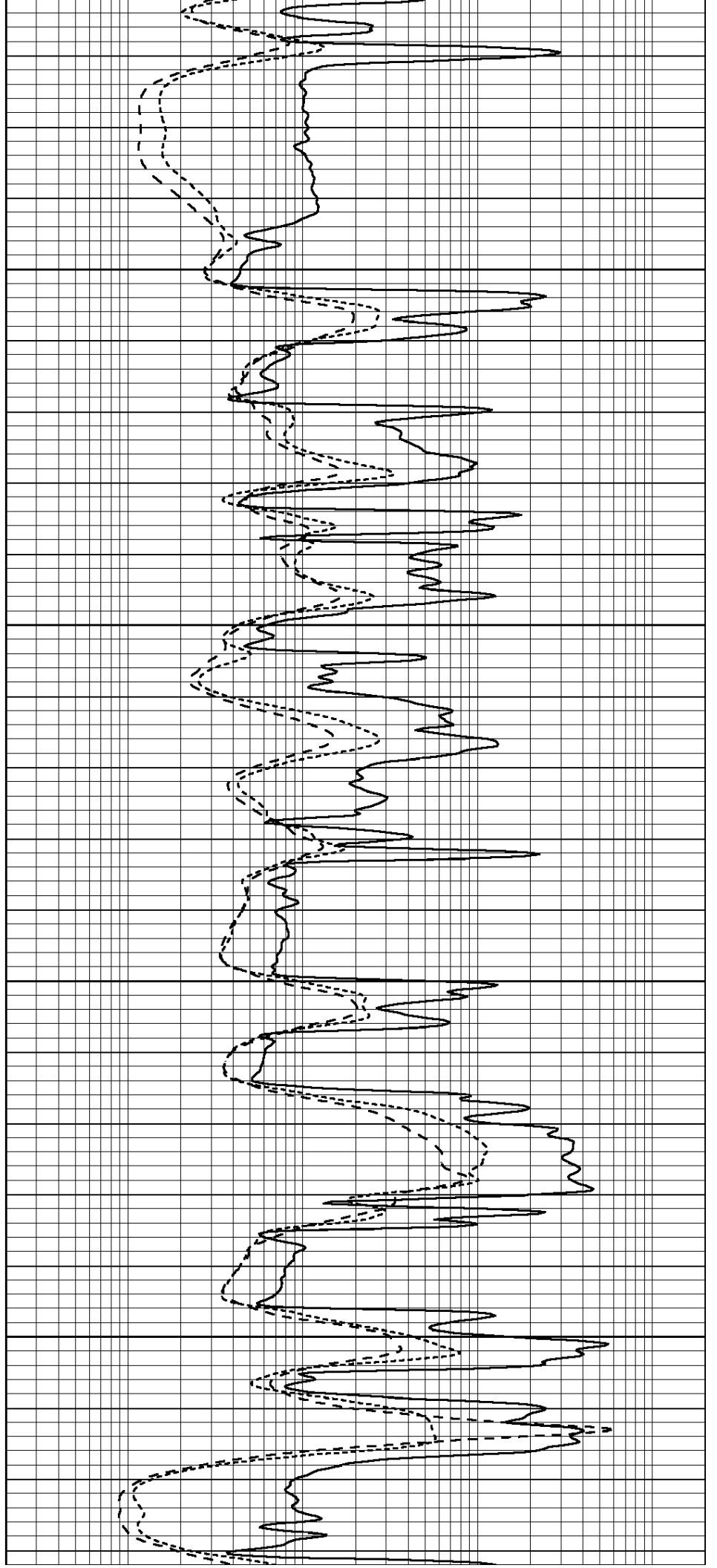


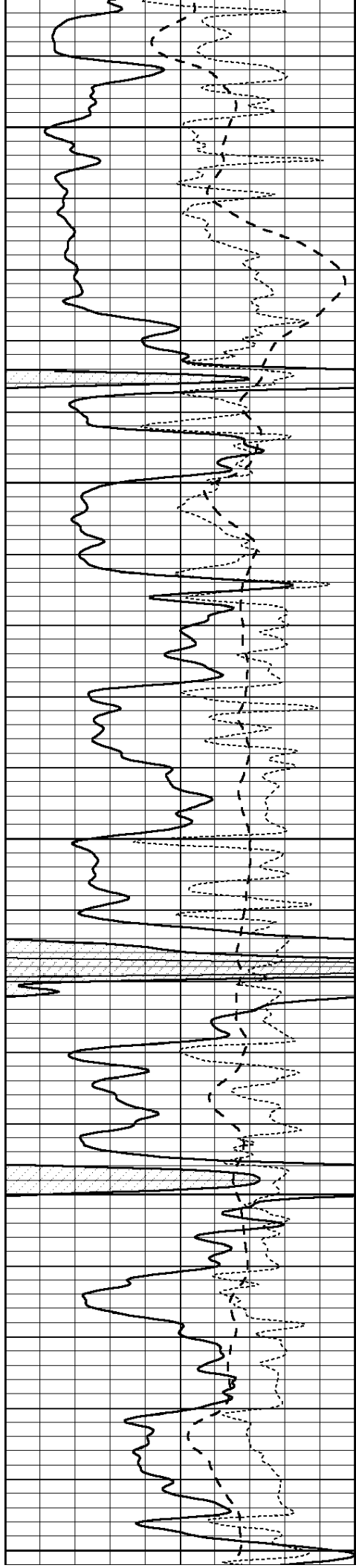
3900

3950

4000

4050





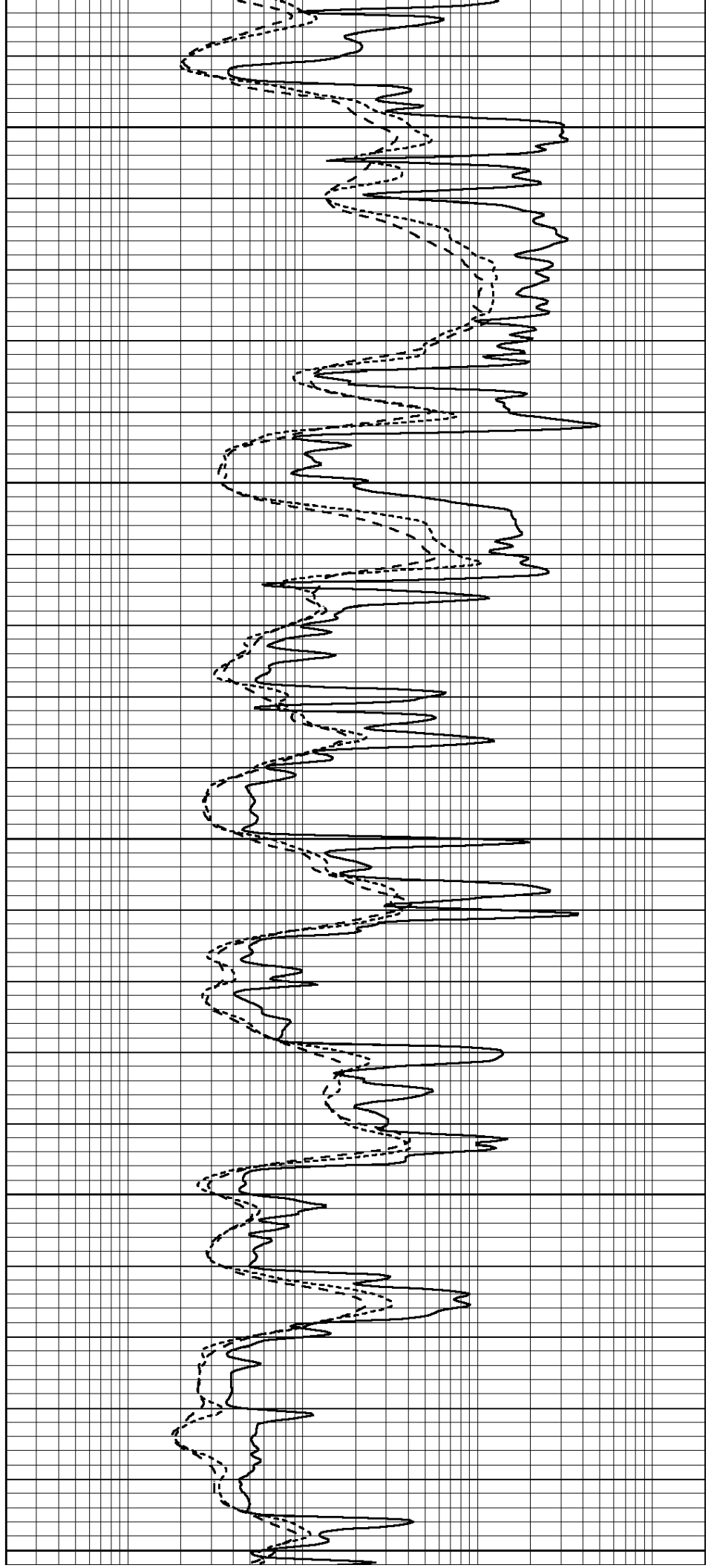
4100

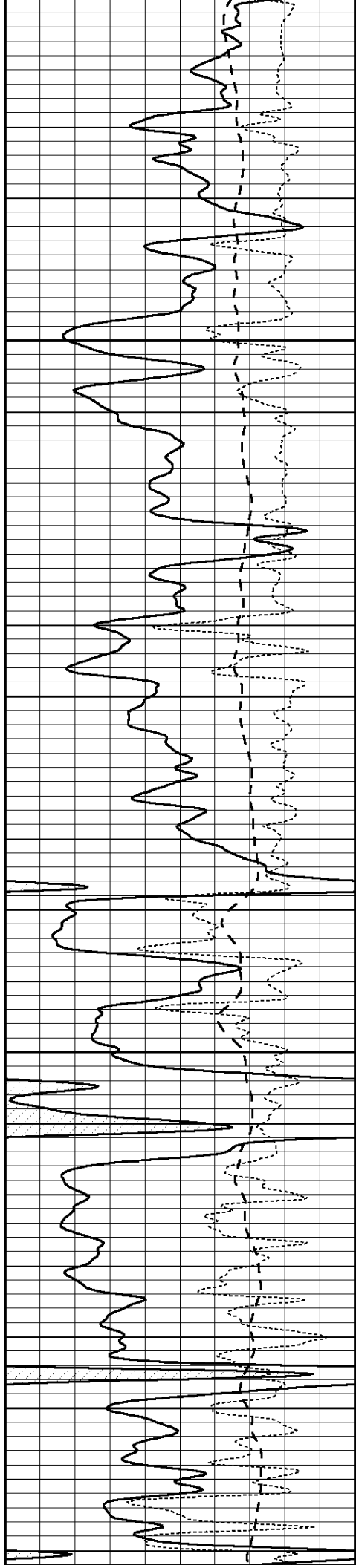
4150

4200

4250

4300



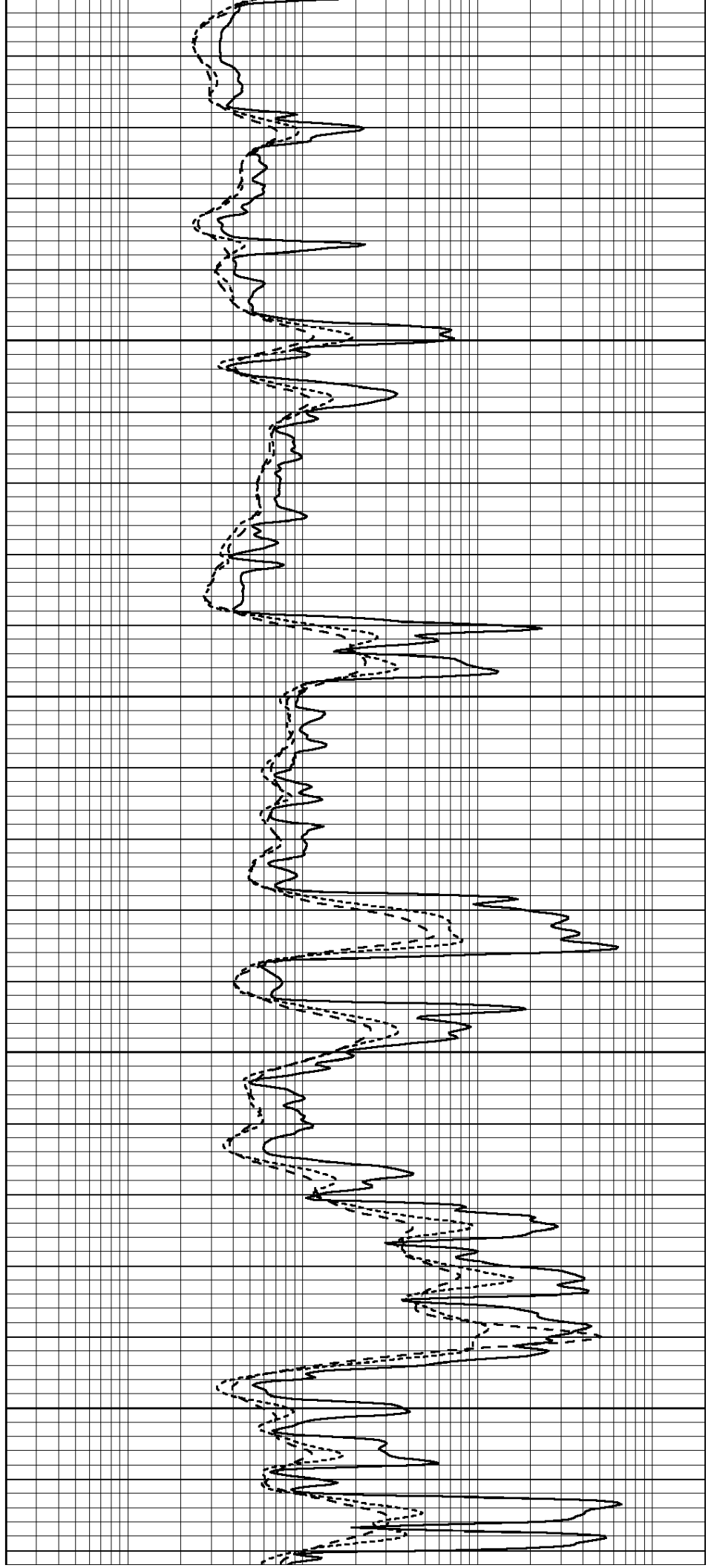


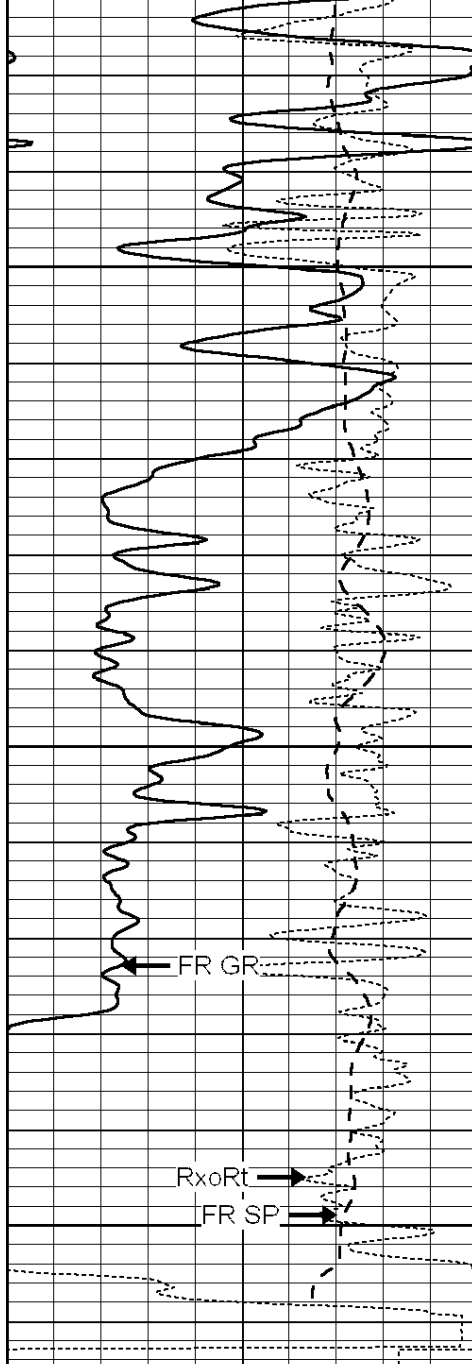
4350

4400

4450

4500





4550

4600

4650

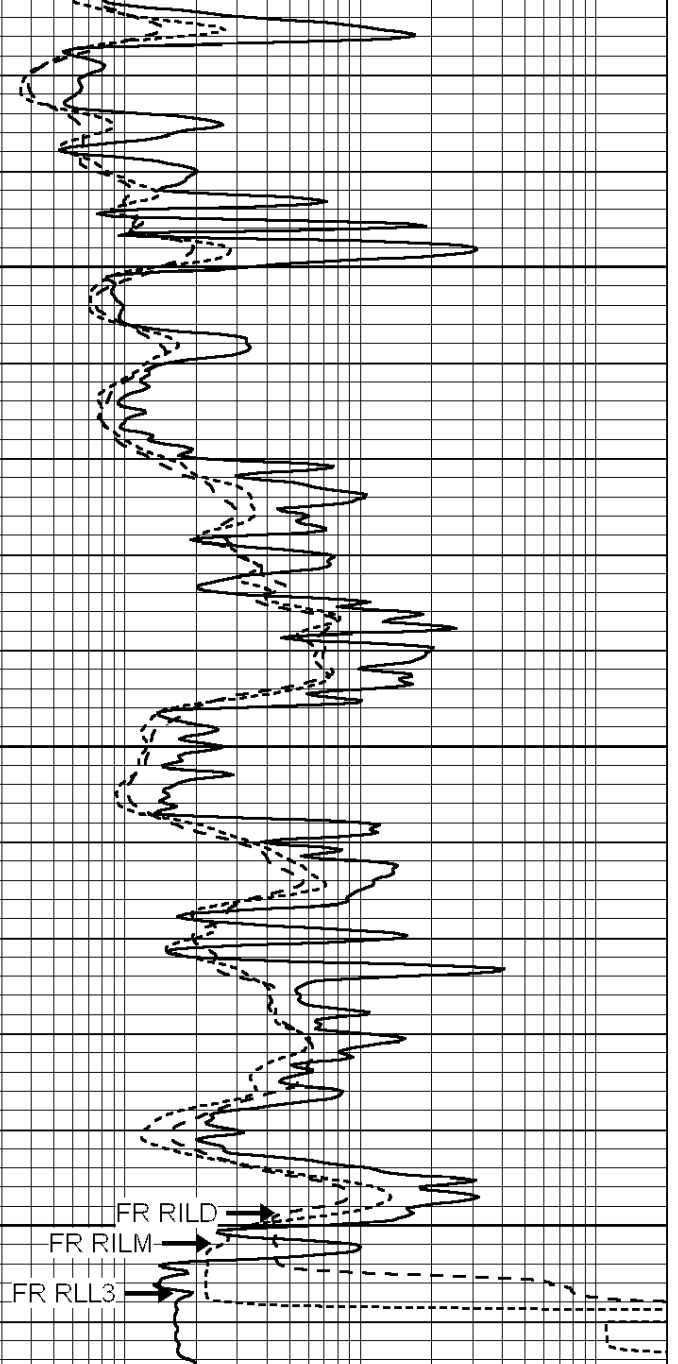
LTD 4659

FR GR

Rxo/Rt

FR SP

0	GAMMA RAY (GAPI)	150
-100	SP (mV)	100
-250	Rxo/Rt	50



FR RILD

FR RILM

FR RLL3

0.2	SHALLOW GUARD (Ohm-m)	2000
0.2	MEDIUM INDUCTION (Ohm-m)	2000
0.2	DEEP INDUCTION (Ohm-m)	2000



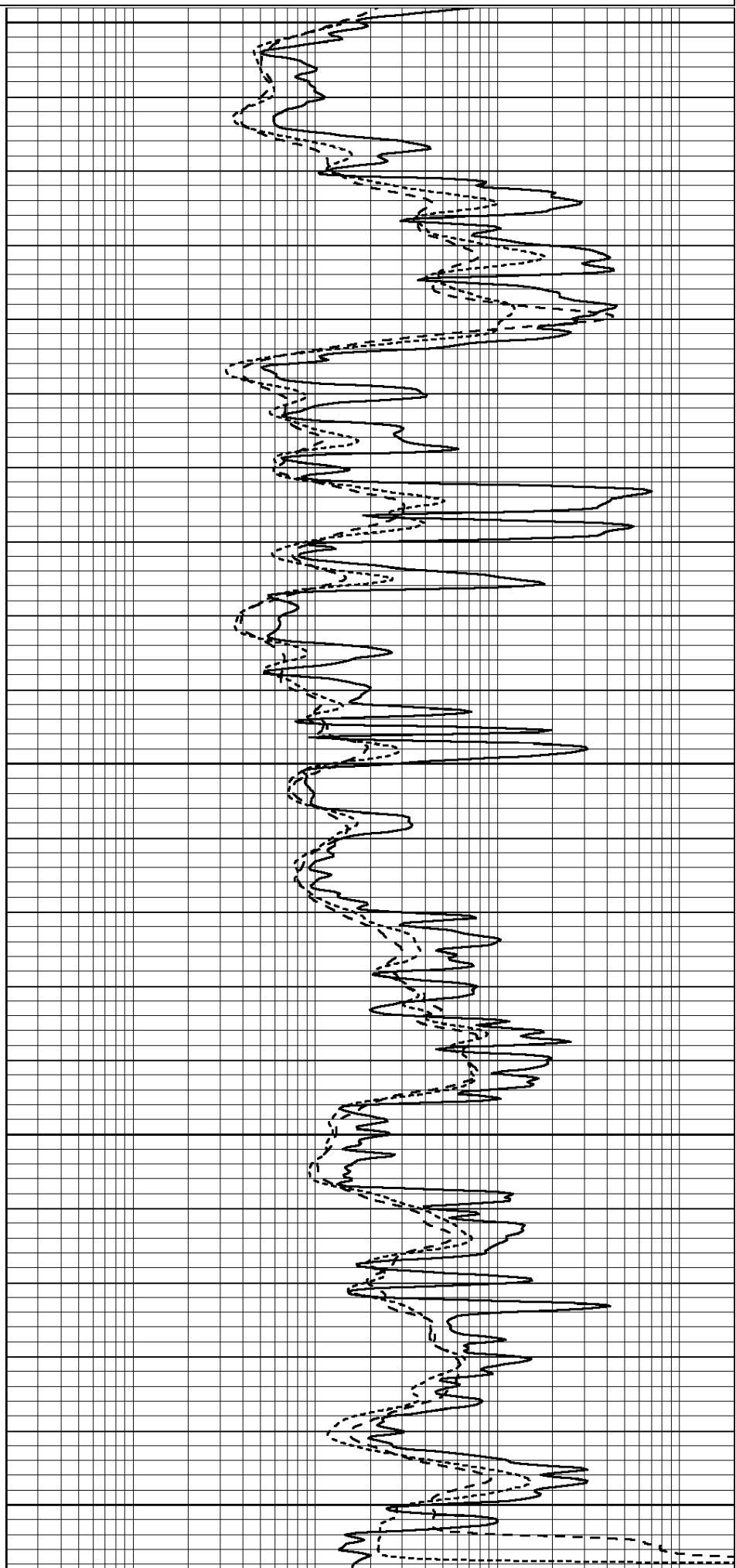
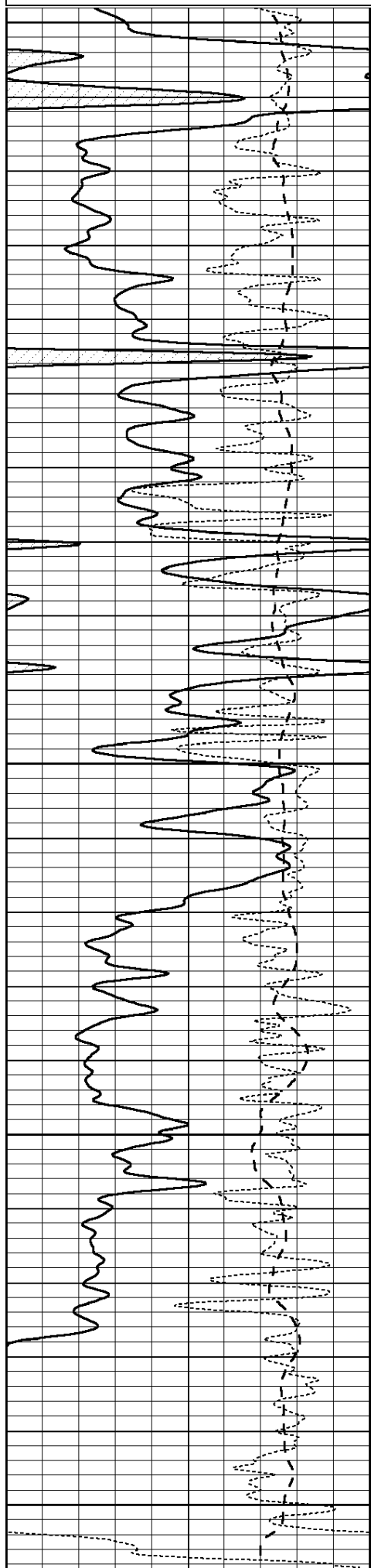
SUPERIOR
Hays,
Kansas

REPEAT SECTION

Database File: 008832ddn.db
 Dataset Pathname: pass3.2
 Presentation Format: _dil
 Dataset Creation: Sat Mar 31 23:58:49 2012 by Calc Open-Cased 090629
 Charted by: Depth in Feet scaled 1:240

0	GAMMA RAY (GAPI)	150
-100	SP (mV)	100
-250	Rxo/Rt	50

0.2	SHALLOW GUARD (Ohm-m)	2000
0.2	MEDIUM INDUCTION (Ohm-m)	2000
0.2	DEEP INDUCTION (Ohm-m)	2000



0	GAMMA RAY (GAPI)	150	0.2	SHALLOW GUARD (Ohm-m)	2000
-100	SP (mV)	100	0.2	MEDIUM INDUCTION (Ohm-m)	2000
-250	Rxo/Rt	50	0.2	DEEP INDUCTION (Ohm-m)	2000

Calibration Report

Database File: 008832ddn.db
Dataset Pathname: pass3.2
Dataset Creation: Sat Mar 31 23:58:49 2012 by Calc Open-Cased 090629

Dual Induction Calibration Report

Serial-Model: PROBE8-DILG
Surface Cal Performed: Fri Aug 01 06:33:19 2008
Downhole Cal Performed: Mon Jul 28 11:08:27 2008
After Survey Verification Performed: Mon Jul 28 11:08:27 2008

Surface Calibration

Loop:	Readings			References			Results	
	Air	Loop		Air	Loop		m	b
Deep	0.015	0.648	V	0.000	400.000	mmho/m	632.616	-9.730
Medium	0.029	0.796	V	0.000	464.000	mmho/m	605.049	-17.680
Internal:	Zero	Cal		Zero	Cal		m	b
Deep	0.017	0.657	V	0.000	400.000	mmho/m	625.153	-10.619
Medium	0.016	0.757	V	0.000	464.000	mmho/m	625.992	-9.739

Downhole Calibration

	Readings			References			Results	
	Zero	Cal		Zero	Cal		m'	b'
Deep	0.000	0.000	mmho/m	2.011	405.777	mmho/m	1.000	0.000
Medium	0.000	0.000	mmho/m	7.590	503.393	mmho/m	1.000	0.000
LL3		7.500	V		1500.000	Ohm-m		
		0.000	V		20.000	Ohm-m		
		-7.200	V		3800.000	mmho-m		

After Survey Verification

	Readings			Targets			Results	
	Zero	Cal		Zero	Cal		m'	b'
Deep	0.000	0.000	mmho/m	0.000	0.000	mmho/m	0.000	0.000
Medium	0.000	0.000	mmho/m	0.000	0.000	mmho/m	0.000	0.000
LL3		1.000	Ohm-m		1.000	Ohm-m		
		0.000	Ohm-m		0.000	Ohm-m		
		1.000	mmho-m		1.000	mmho-m		

Compensated Density Calibration Report

Serial-Model: GEAR4-GEARHART
Source / Verifier: 143 / 143
Master Calibration Performed: Mon Mar 19 19:07:19 2012

Master Calibration

	Density		Far Detector	Near Detector	
Magnesium	1.710	g/cc	1015.91	497.51	cps
Aluminum	2.600	g/cc	227.67	350.20	cps

Spine Angle = 76.79

Density/Spine Ratio = 0.579

	Size		Reading	
Small Ring	8.00	in	2.25	V
Large Ring	14.00	in	4.37	V

Compensated Neutron Calibration Report

Serial Number: 6I
Tool Model: G

CALIBRATION

Detector	Readings		Target		Normalization
Short Space	1.00	cps	1.00	cps	1.0000
Long Space	1.00	cps	1.00	cps	1.0000

Gamma Ray Calibration Report

Serial Number: #8
Tool Model: OPEN
Performed: Mon Jun 13 16:56:43 2011

Calibrator Value: 150.0 GAPI

Background Reading: 0.0 cps
Calibrator Reading: 175.0 cps

Sensitivity: 0.8371 GAPI/cps