



**SUPERIOR**  
**Hays,**  
**Kansas**

**COMPENSATED**  
**NEUTRON / DENSITY**  
**LOG**

Company RITCHIE EXPLORATION, INC.  
 Well #1 CKG-SCHLITZ  
 Field CKG  
 County SHERIDAN  
 State KANSAS

Company RITCHIE EXPLORATION, INC.  
 Well #1 CKG-SCHLITZ  
 Field CKG  
 County SHERIDAN State KANSAS

Location: API # : 15-179-21299-0000  
 1120' FNL & 200' FEL  
 Other Services  
 DIL  
 Elevation  
 Permanent Datum GROUND LEVEL Elevation 2946  
 Log Measured From KELLY BUSHING 5' A.G.L.  
 Drilling Measured From KELLY BUSHING

Date	3/31/12		
Run Number	ONE		
Depth Driller	4655		
Depth Logger	4659		
Bottom Logged Interval	4635		
Top Log Interval	3200		
Casing Driller	8 5/8" @ 305		
Casing Logger	NA		
Bit Size	7 7/8		
Type Fluid in Hole	CHEMICAL MUD	CHLORIDES 2400 PPM	
Density / Viscosity	9.2/65		
pH / Fluid Loss	9.0/9.6		
Source of Sample	FLOWLINE		
Rim @ Meas. Temp	1.4 @ 80F		
Rmf @ Meas. Temp	1.05 @ 80F		
Rmc @ Meas. Temp	1.68 @ 80F		
Source of Rmf / Rmc	MEASURED		
Rim @ BHT	.91 @ 122F		
Time Circulation Stopped	2 HOURS		
Time Logger on Bottom			
Maximum Recorded Temperature	122F		
Equipment Number	680		
Location	HAYS, KS.		
Recorded By	JASON CAPPELLUCCI		
Witnessed By	BOB PETERSON		

<<< Fold Here >>>

All interpretations are opinions based on inferences from electrical or other measurements and we cannot and do not guarantee the accuracy or correctness of any interpretation, and we shall not, except in the case of gross or willful negligence on our part, be liable or responsible for any loss, costs, damages, or expenses incurred or sustained by anyone resulting from any interpretation made by any of our officers, agents or employees. These interpretations are also subject to our general terms and conditions set out in our current Price Schedule.

Comments

THANK YOU FOR USING SUPERIOR WELL SERVICE (785) 628-6395  
 DIRECTIONS  
 I-70 & CAMPUS EXIT - 5 N. TO RD. E - 3 E. TO ANGELUS - 7 N. - W. INTO

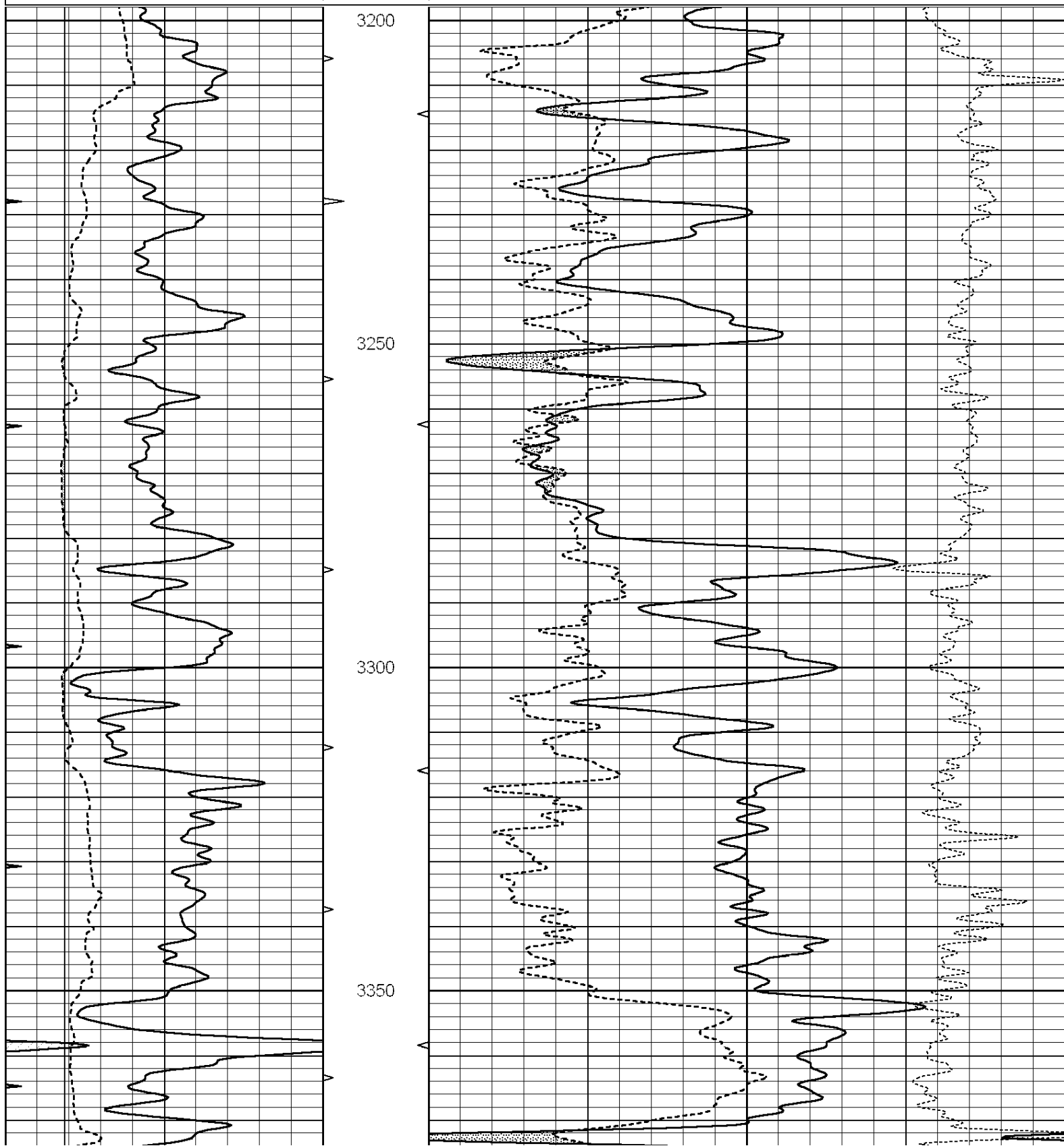


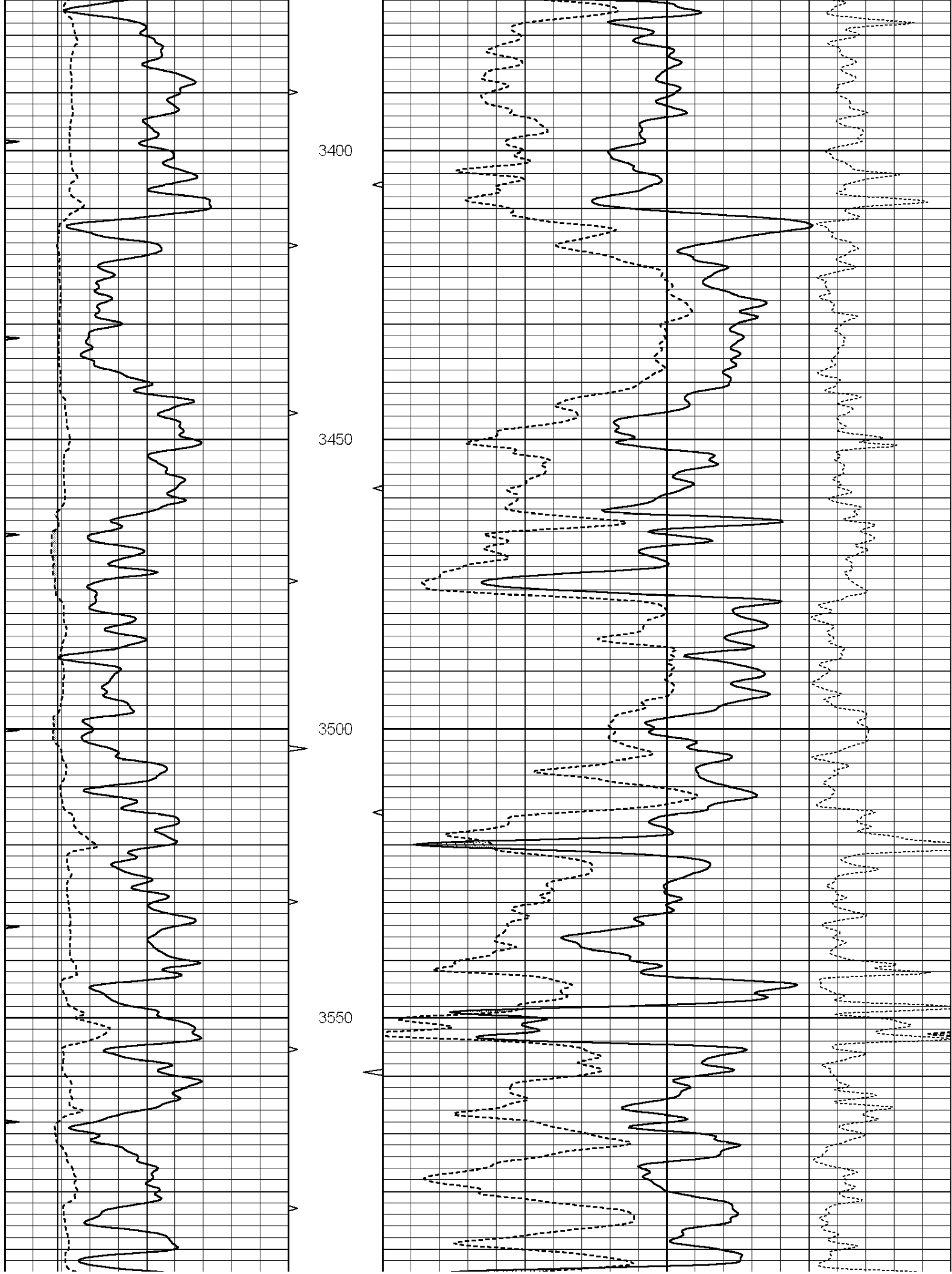
**SUPERIOR**  
**Hays,**  
**Kansas**

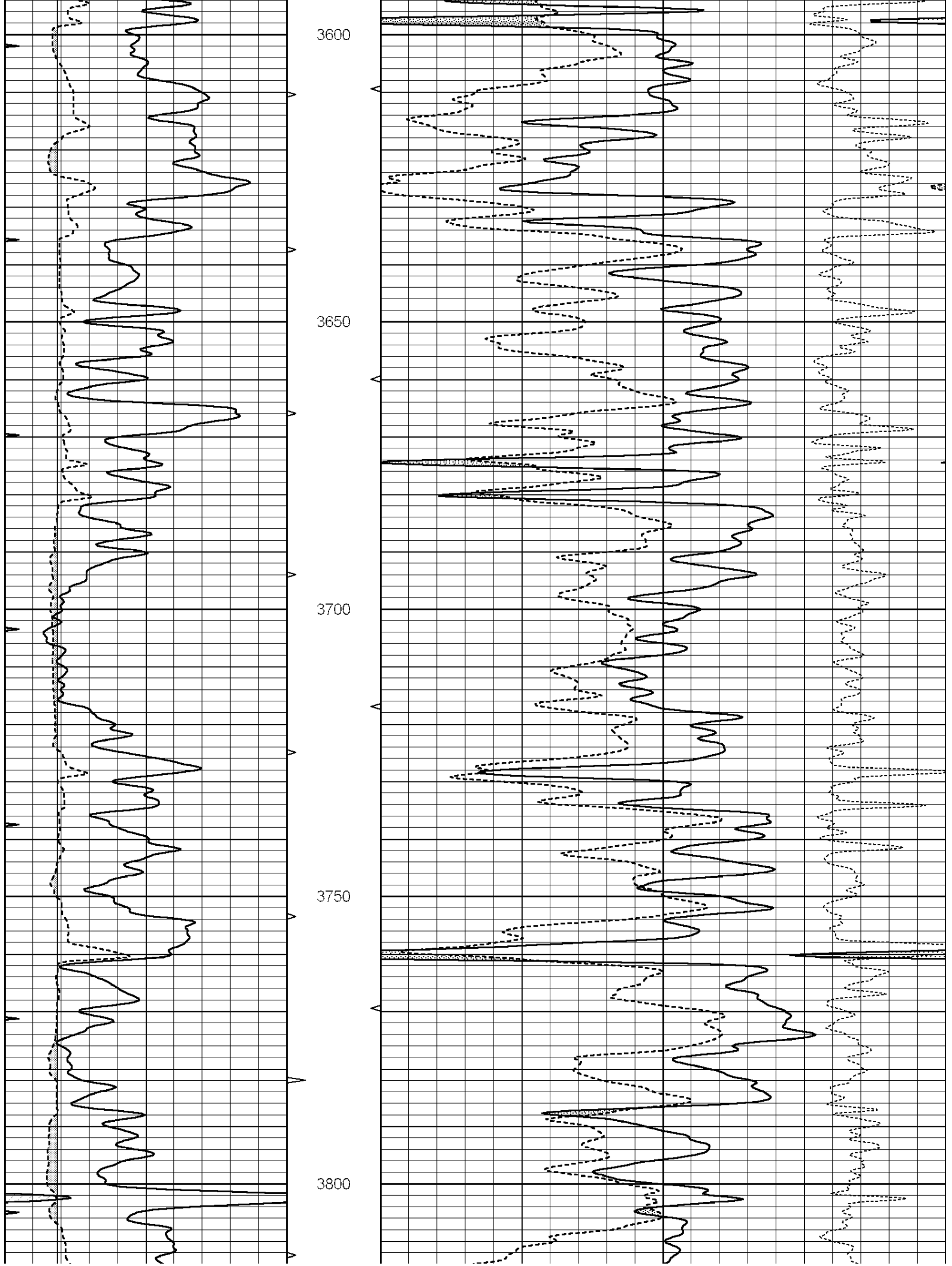
**MAIN SECTION**

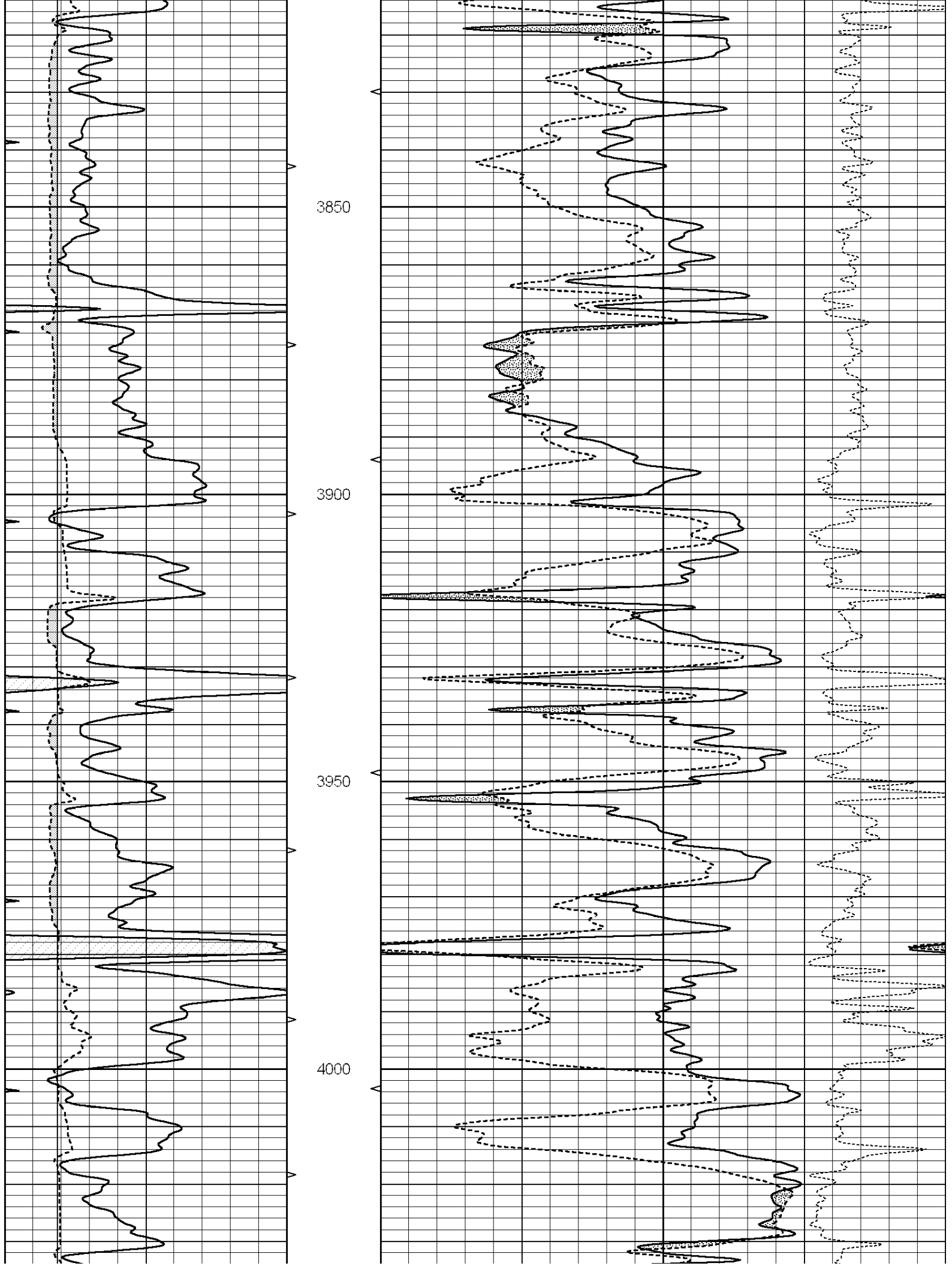
Database File: 008832ddn.db  
 Dataset Pathname: pass4.1  
 Presentation Format: \_den\_neu  
 Dataset Creation: Sun Apr 01 00:16:31 2012 by Calc Open-Cased 090629  
 Charted by: Depth in Feet scaled 1:240

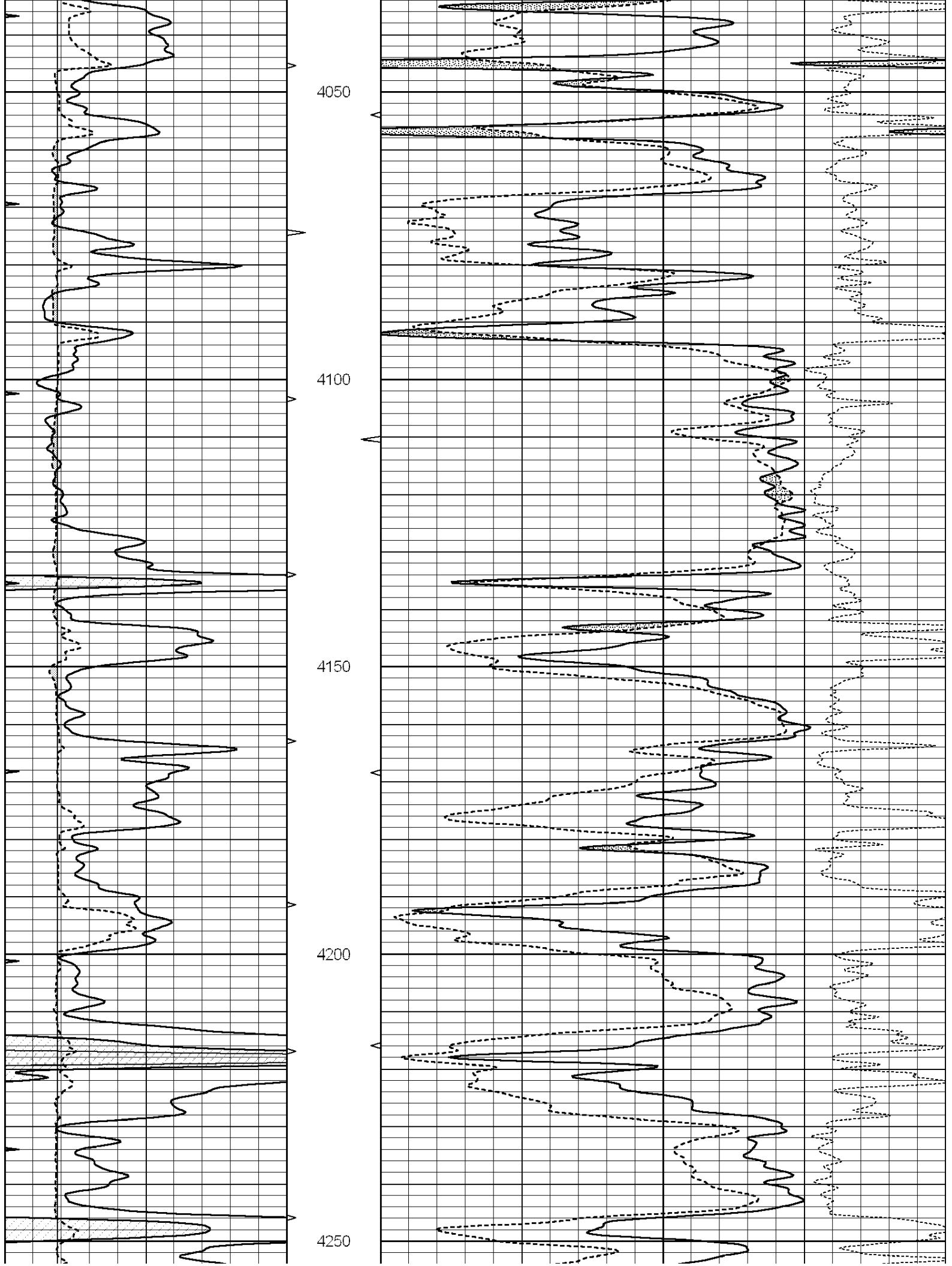
0	GAMMA RAY (GAPI)	150	AVTX	30	COMPENSATED DENSITY (pu)	-10
6	CALIPER (in)	16	10 (ft3)	0 30	COMPENSATED NEUTRON (pu)	-10
0	MINMK	20	BVTX		-0.25 CORRECTION (g/cc)	0.25
			0 (ft3)	10		

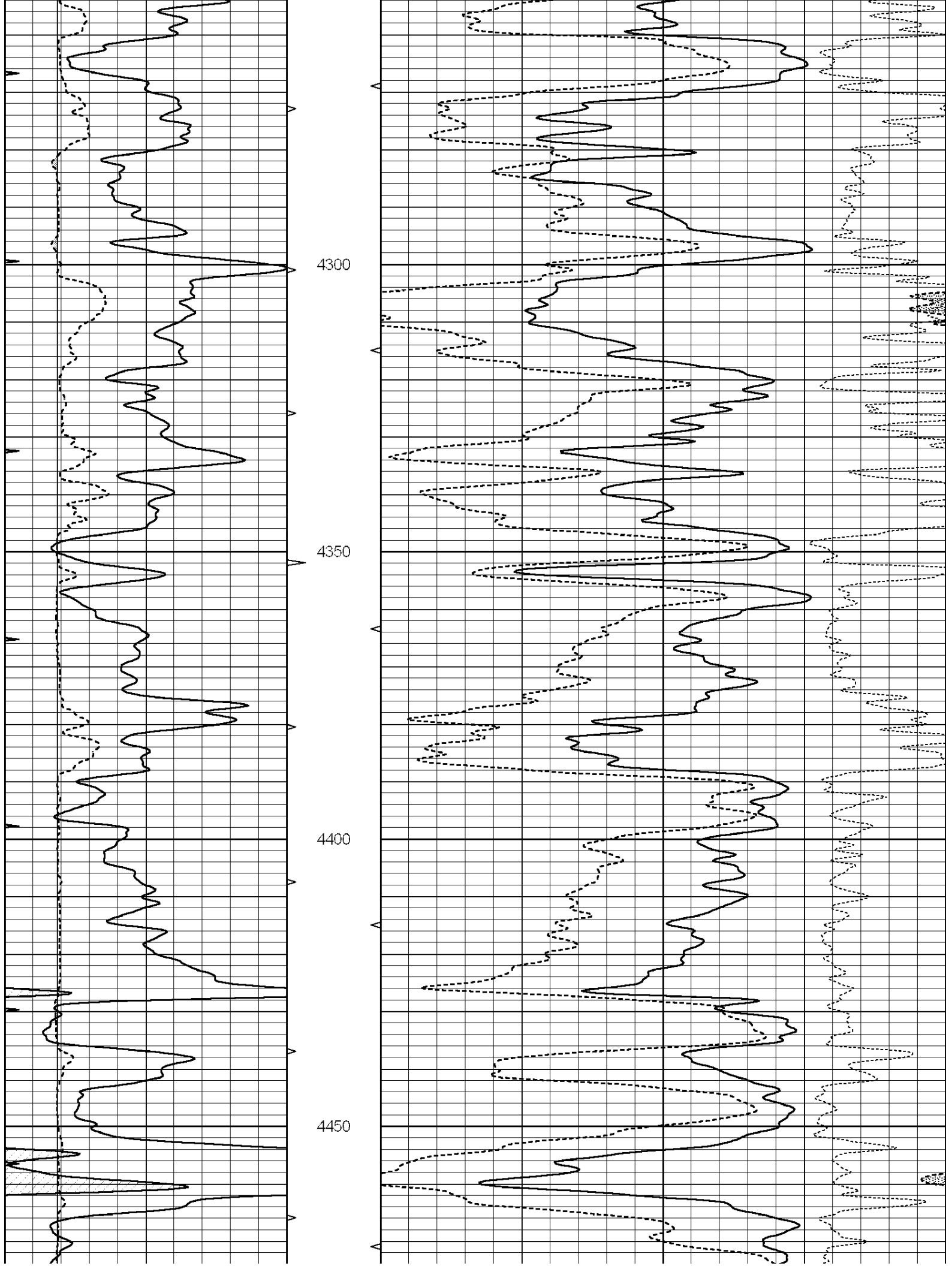


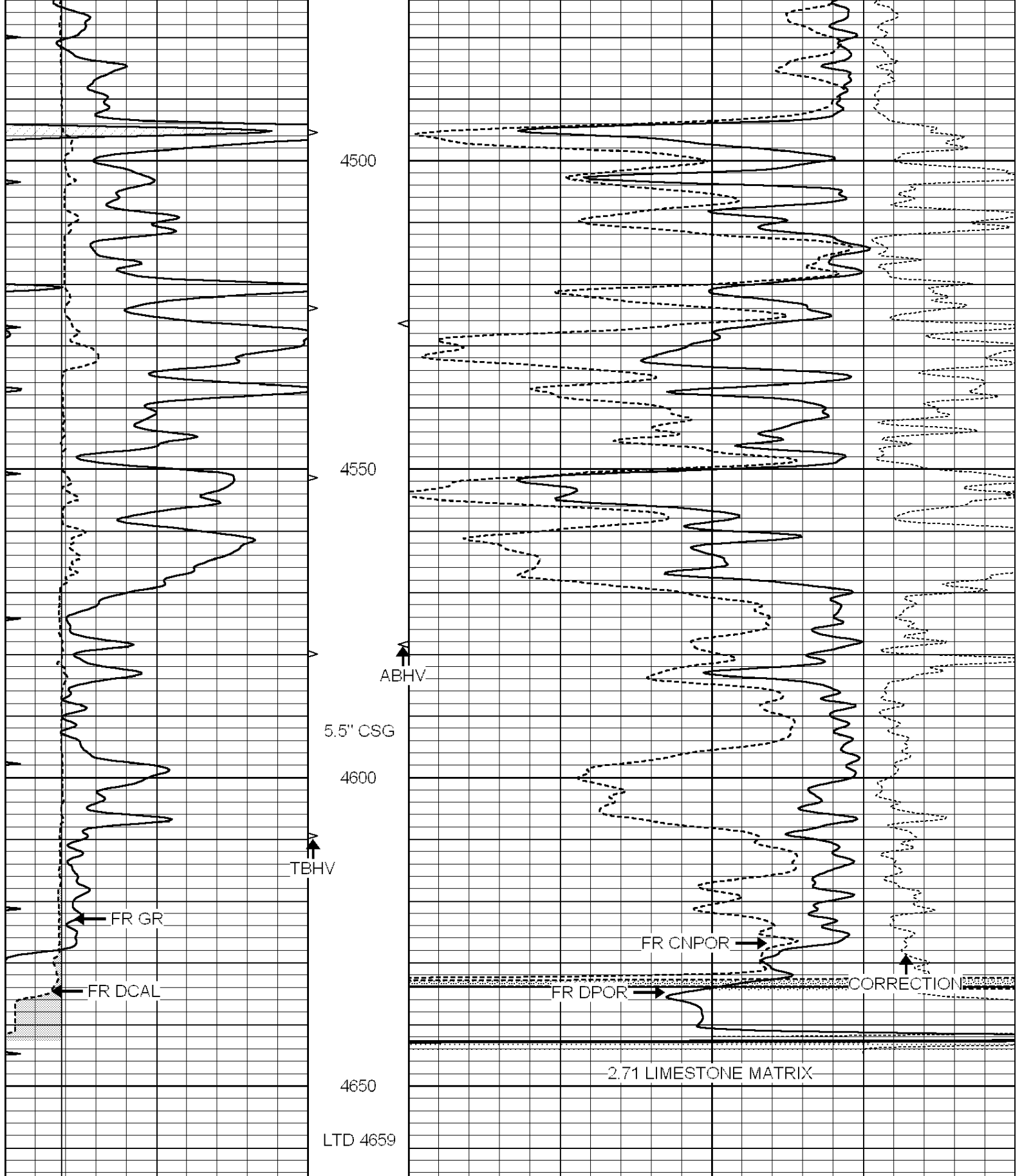




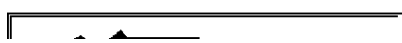








0	GAMMA RAY (GAPI)	150	AVTX	30	COMPENSATED DENSITY (pu)	-10	
6	CALIPER (in)	16	10 (ft3)	0 30	COMPENSATED NEUTRON (pu)	-10	
0	MINMK	20	BVTX		-0.25	CORRECTION (g/cc)	0.25
			0 (ft3)	10			



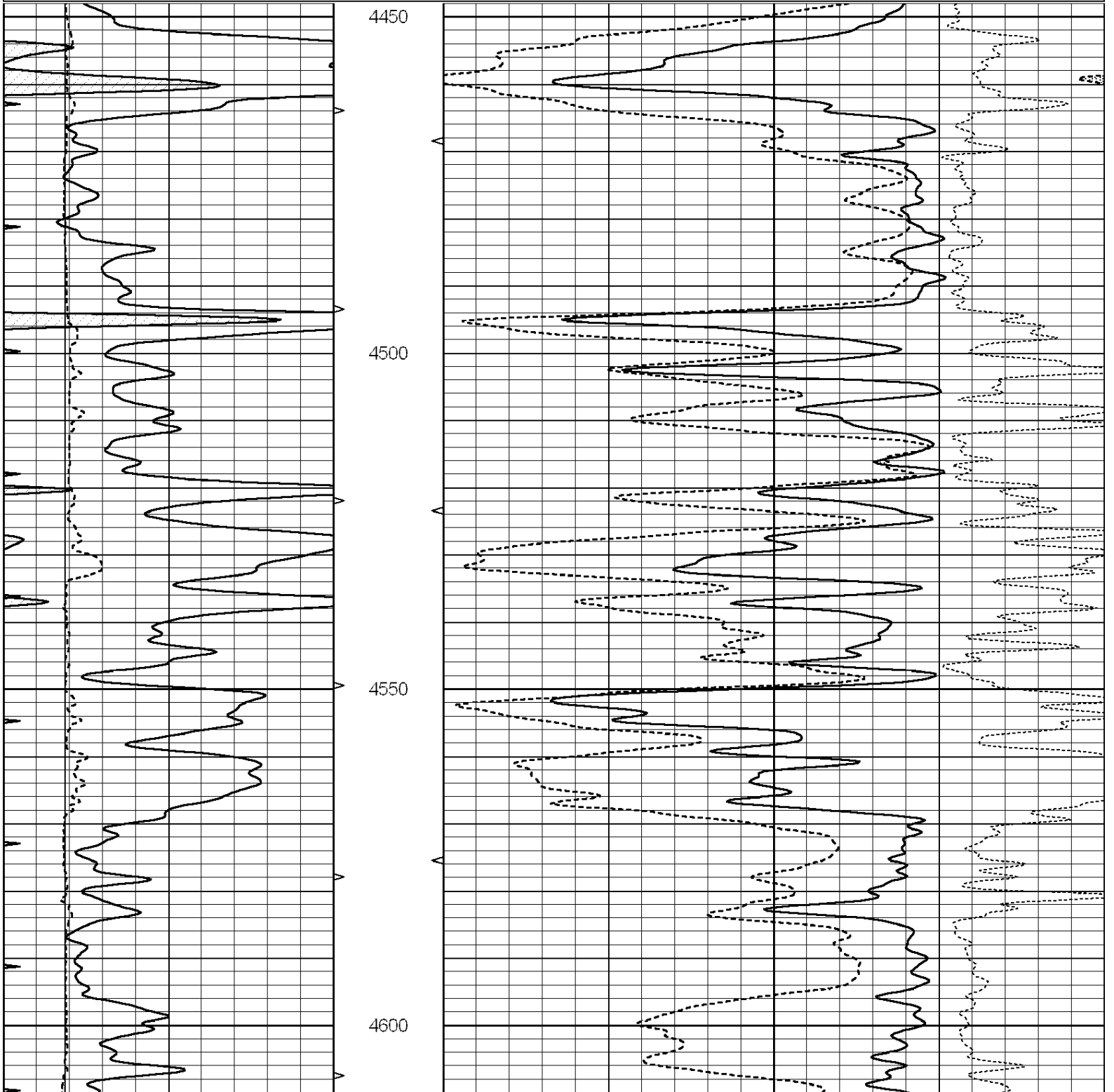


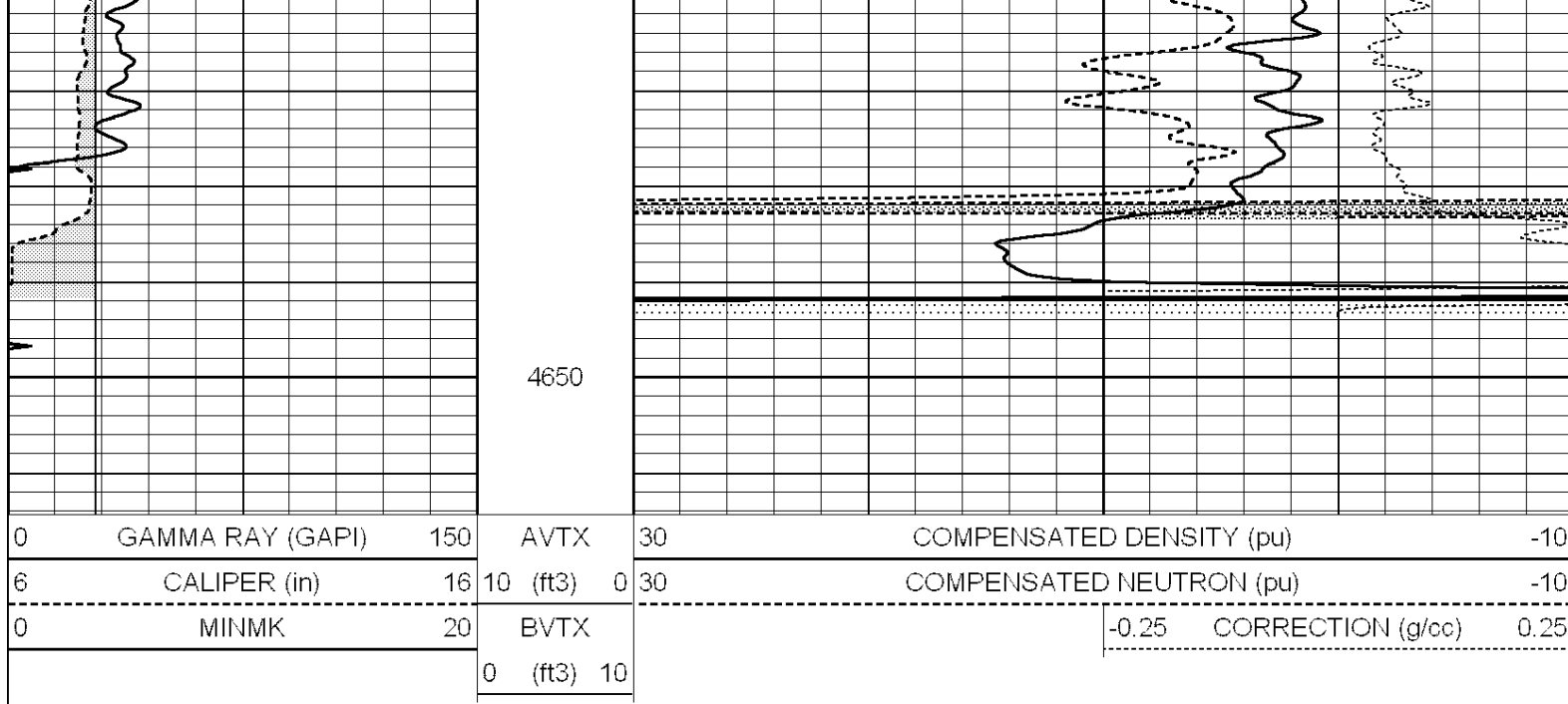
SUPERIOR  
Hays,  
Kansas

# REPEAT SECTION

Database File: 008832ddn.db  
 Dataset Pathname: pass3.2  
 Presentation Format: \_den\_neu  
 Dataset Creation: Sat Mar 31 23:58:49 2012 by Calc Open-Cased 090629  
 Charted by: Depth in Feet scaled 1:240

0	GAMMA RAY (GAPI)	150	AVTX	30	COMPENSATED DENSITY (pu)	-10
6	CALIPER (in)	16	10 (ft3)	0 30	COMPENSATED NEUTRON (pu)	-10
0	MINMK	20	BVTX		-0.25 CORRECTION (g/cc)	0.25
			0 (ft3)	10		





### Calibration Report

Database File: 008832ddn.db  
 Dataset Pathname: pass3.2  
 Dataset Creation: Sat Mar 31 23:58:49 2012 by Calc Open-Cased 090629

### Dual Induction Calibration Report

Serial-Model: PROBE8-DILG  
 Surface Cal Performed: Fri Aug 01 06:33:19 2008  
 Downhole Cal Performed: Mon Jul 28 11:08:27 2008  
 After Survey Verification Performed: Mon Jul 28 11:08:27 2008

#### Surface Calibration

Loop:	Readings			References			Results	
	Air	Loop		Air	Loop		m	b
Deep	0.015	0.648	V	0.000	400.000	mmho/m	632.616	-9.730
Medium	0.029	0.796	V	0.000	464.000	mmho/m	605.049	-17.680
Internal:	Zero	Cal		Zero	Cal		m	b
Deep	0.017	0.657	V	0.000	400.000	mmho/m	625.153	-10.619
Medium	0.016	0.757	V	0.000	464.000	mmho/m	625.992	-9.739

#### Downhole Calibration

	Readings			References			Results	
	Zero	Cal		Zero	Cal		m'	b'
Deep	0.000	0.000	mmho/m	2.011	405.777	mmho/m	1.000	0.000
Medium	0.000	0.000	mmho/m	7.590	503.393	mmho/m	1.000	0.000
LL3		7.500	V		1500.000	Ohm-m		
		0.000	V		20.000	Ohm-m		
		-7.200	V		3800.000	mmho-m		

#### After Survey Verification

	Readings			Targets			Results	
	Zero	Cal		Zero	Cal		m'	b'
Deep	0.000	0.000	mmho/m	0.000	0.000	mmho/m	0.000	0.000
Medium	0.000	0.000	mmho/m	0.000	0.000	mmho/m	0.000	0.000
LL3		1.000	Ohm-m		1.000	Ohm-m		

0.000 Ohm-m  
1.000 mmho-m

0.000 Ohm-m  
1.000 mmho-m

### Compensated Density Calibration Report

Serial-Model: GEAR4-GEARHART  
Source / Verifier: 143 / 143  
Master Calibration Performed: Mon Mar 19 19:07:19 2012

#### Master Calibration

	Density		Far Detector	Near Detector	
Magnesium	1.710	g/cc	1015.91	497.51	cps
Aluminum	2.600	g/cc	227.67	350.20	cps
Spine Angle = 76.79			Density/Spine Ratio = 0.579		
	Size		Reading		
Small Ring	8.00	in	2.25	V	
Large Ring	14.00	in	4.37	V	

### Compensated Neutron Calibration Report

Serial Number: 6I  
Tool Model: G

#### CALIBRATION

Detector	Readings		Target		Normalization
Short Space	1.00	cps	1.00	cps	1.0000
Long Space	1.00	cps	1.00	cps	1.0000

### Gamma Ray Calibration Report

Serial Number: #8  
Tool Model: OPEN  
Performed: Mon Jun 13 16:56:43 2011

Calibrator Value: 150.0 GAPI

Background Reading: 0.0 cps  
Calibrator Reading: 175.0 cps

Sensitivity: 0.8371 GAPI/cps