

LOG-TECH



DIGITAL LOG (785) 625-3858

Microresistivity Log

API No. 15-113-21352-00-00

Company **K&S Oil Company**
 Well **Unruh #7**
 Field **Canton North**
 County **McPherson State** **Kansas**

Location **2145' FSL & 1425' FEL**

Sec: **35** Twp: **18S** Rge: **1W**

Other Services
 CNL/CDL
 DIL/BHCS

Permanent Datum **Ground Level** Elevation **1535**
 Log Measured From **Kelly Bushing** 9 Ft. Above Perm. Datum
 Drilling Measured From **Kelly Bushing**

Elevation
 K.B. 1544
 D.F. 1535
 G.L. 1535

Date	6/28/2012	
Run Number	Two	
Depth Driller	3360	
Depth Logger	3362	
Bottom Logged Interval	3361	
Top Log Interval	1800	
Casing Driller	8.625 @ 213	
Casing Logger	211	
Bit Size	7.875	
Type Fluid in Hole	Chemical	
Salinity, ppm CL	1200	
Density / Viscosity	9.3	36
pH / Fluid Loss	9.0	9.4
Source of Sample	Flowline	
Rm @ Meas. Temp	1.05 @ 78	
Rmf @ Meas. Temp	0.79 @ 78	
Rmc @ Meas. Temp	1.4 @ 78	
Source of Rmf / Rmc	Charts	
Rm @ BHT	0.73 @ 112	
Operating Rig Time	5 Hours	
Max Rec. Temp. F	112	
Equipment Number	91	
Location	Hays	
Recorded By	D. Schmidt	
Witnessed By	Matt Avcin	

<<< Fold Here >>>

All interpretations are opinions based on inferences from electrical or other measurements and we cannot and do not guarantee the accuracy or correctness of any interpretation, and we shall not, except in the case of gross or willful negligence on our part, be liable or responsible for any loss, costs, damages, or expenses incurred or sustained by anyone resulting from any interpretation made by any of our officers, agents or employees. These interpretations are also subject to our general terms and conditions set out in our current Price Schedule.

Comments

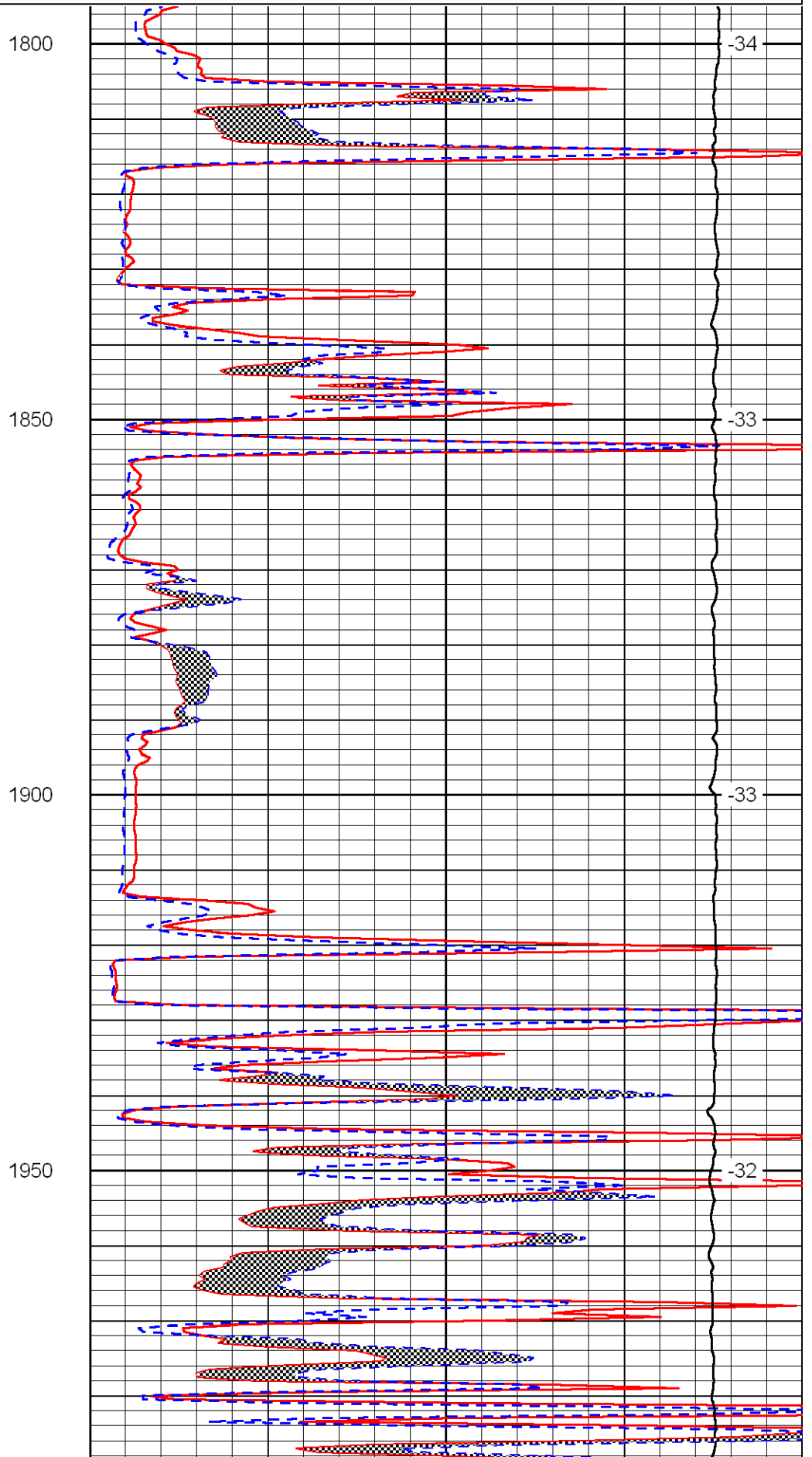
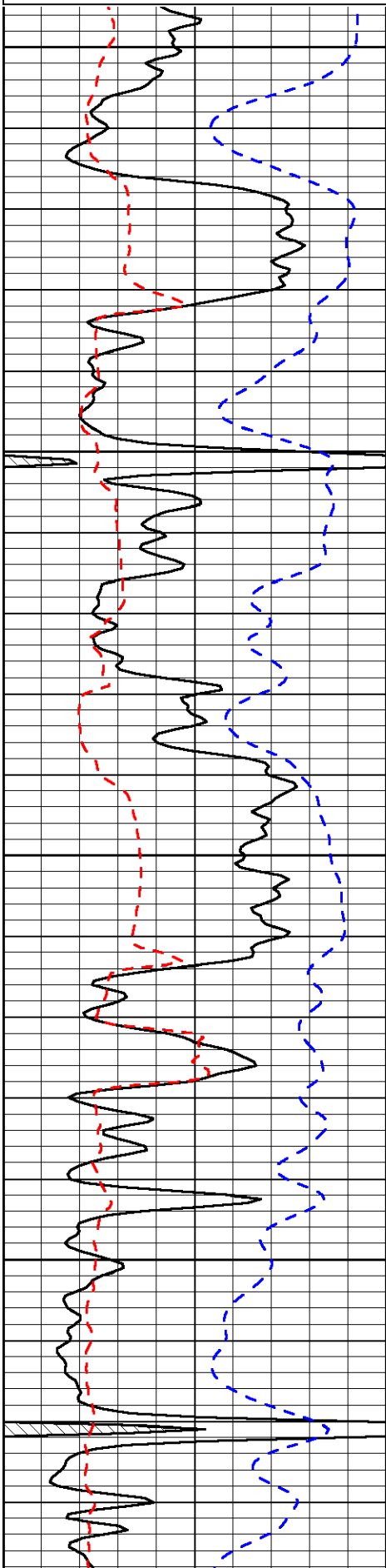
Thank you for using Log-Tech, Inc.
 (785) 625-3858

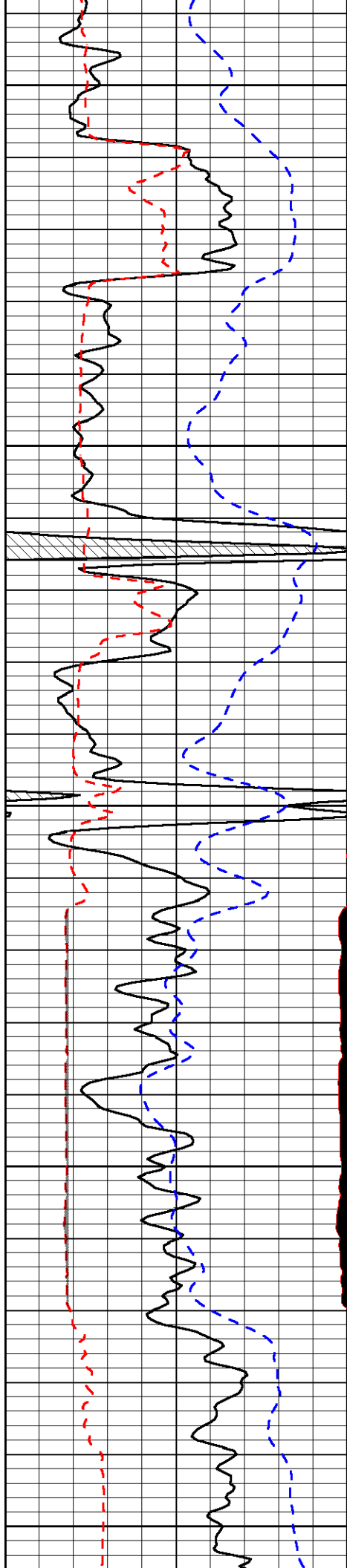
Canton,
 2 E to 29th Ave, 4.3 N,
 W into

Database File: k&s_062812hd.db
 Dataset Pathname: dil/kstack2
 Presentation Format: micro
 Dataset Creation: Thu Jun 28 12:46:37 2012
 Charted by: Depth in Feet scaled 1:240

0	Gamma Ray	150
6	MCAL (GAPI)	16
2.875	Mud Cake (GAPI)	7.875
-200	SP	0

0	Micro Inverse 1 X 1	40
0	Micro Normal 2"	40
10000	Line Weight	0
		LSPD





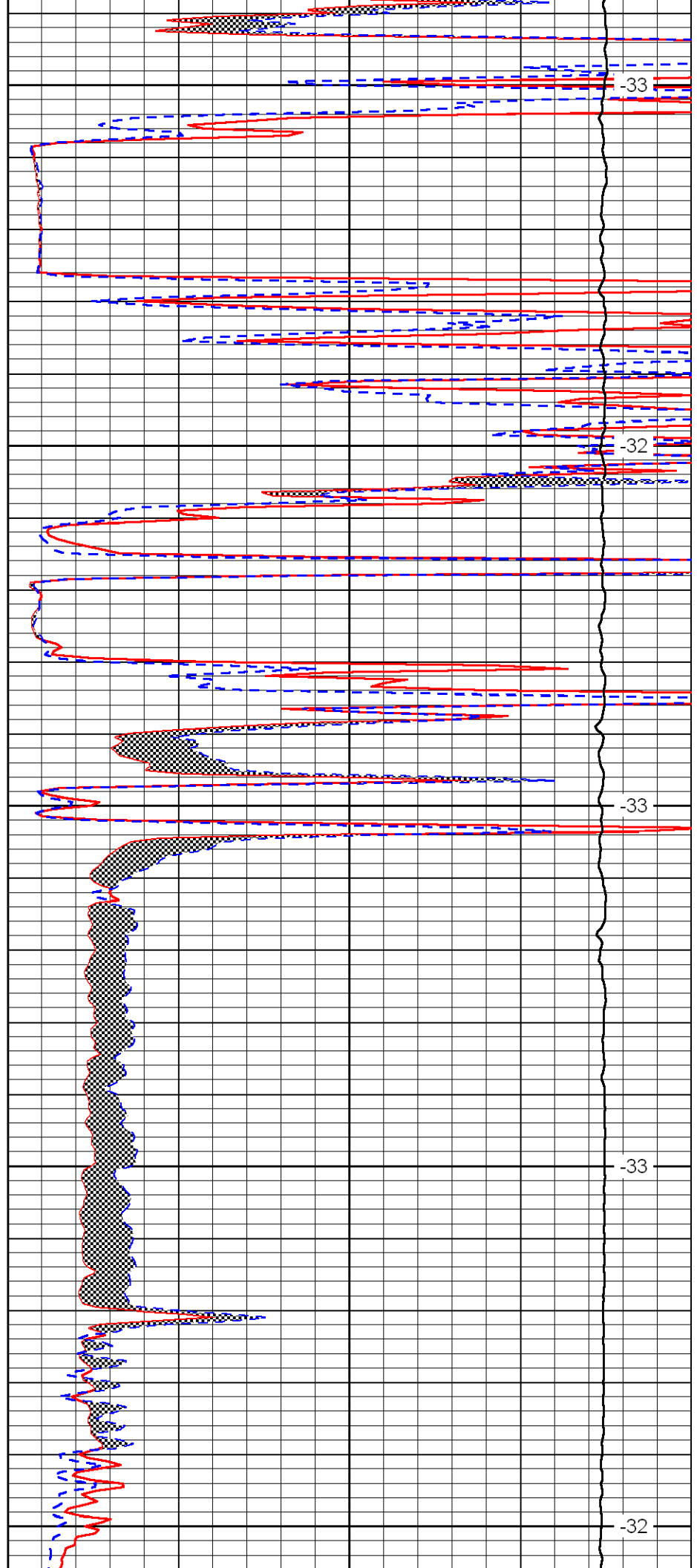
2000

2050

2100

2150

2200



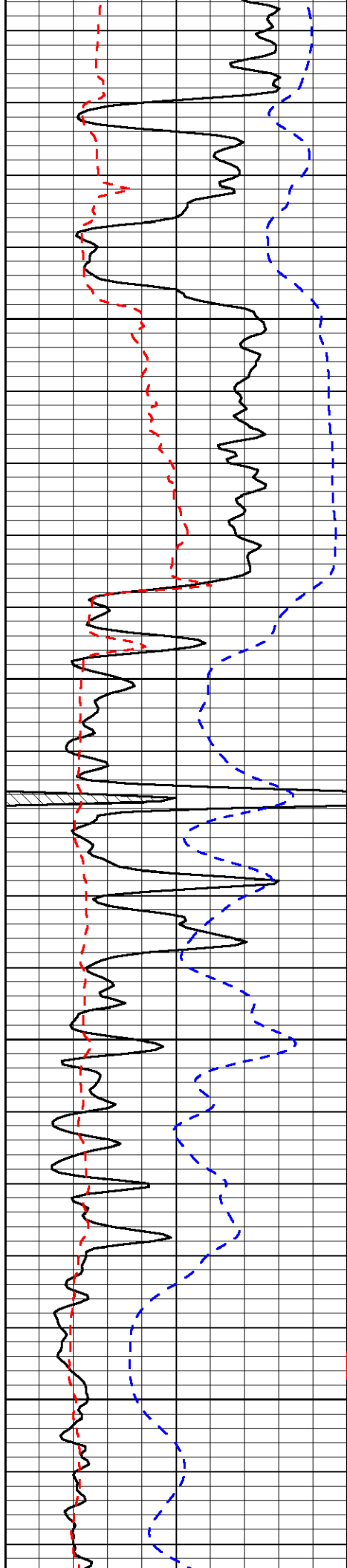
-33

-32

-33

-33

-32

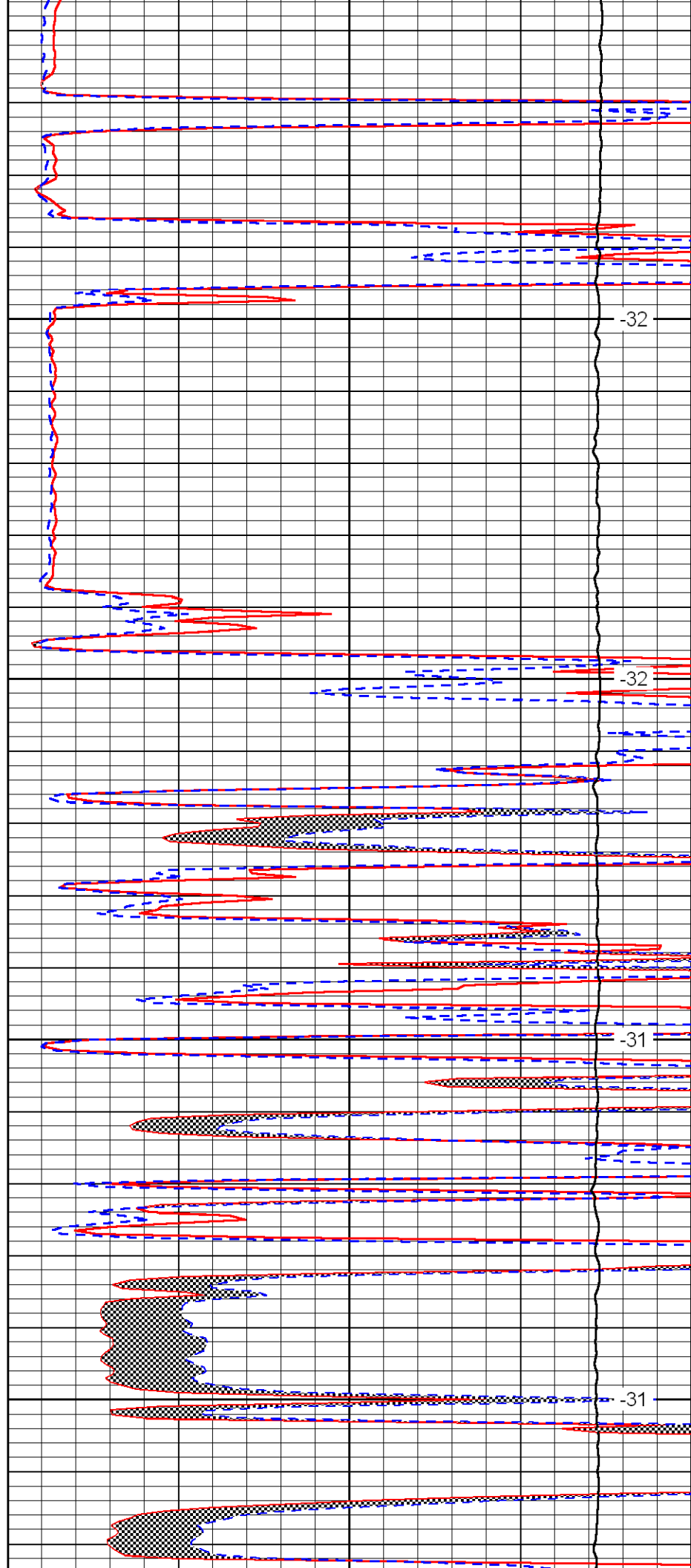


2250

2300

2350

2400

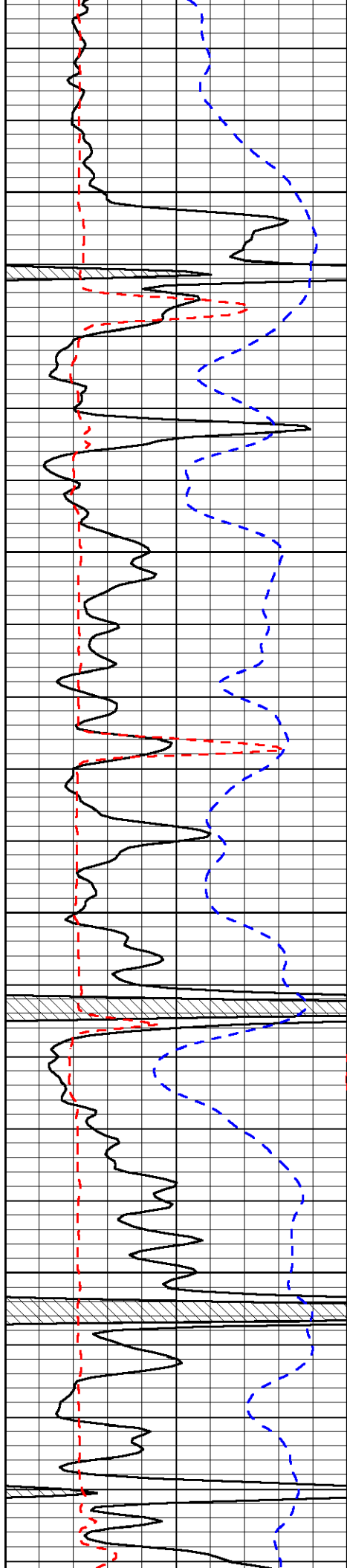


-32

-32

-31

-31

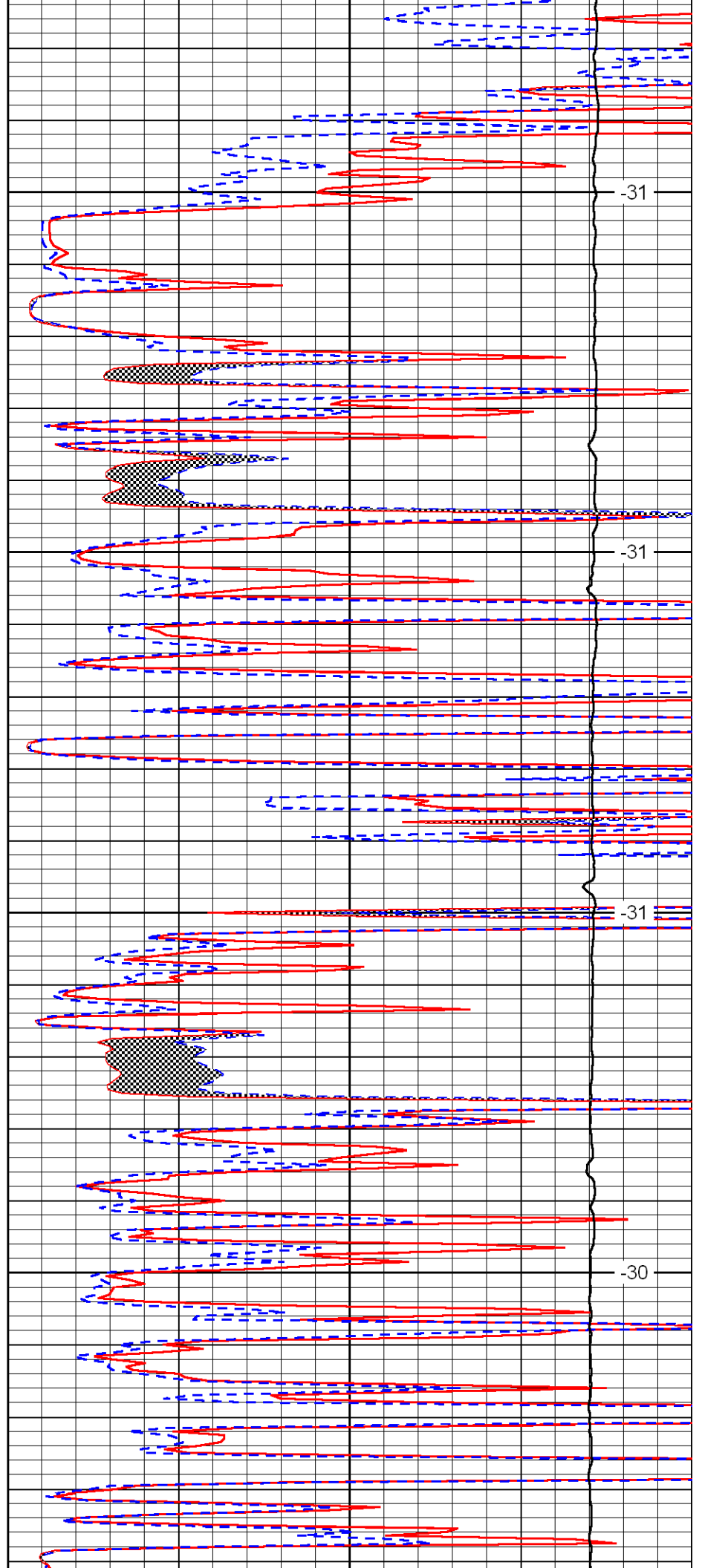


2450

2500

2550

2600

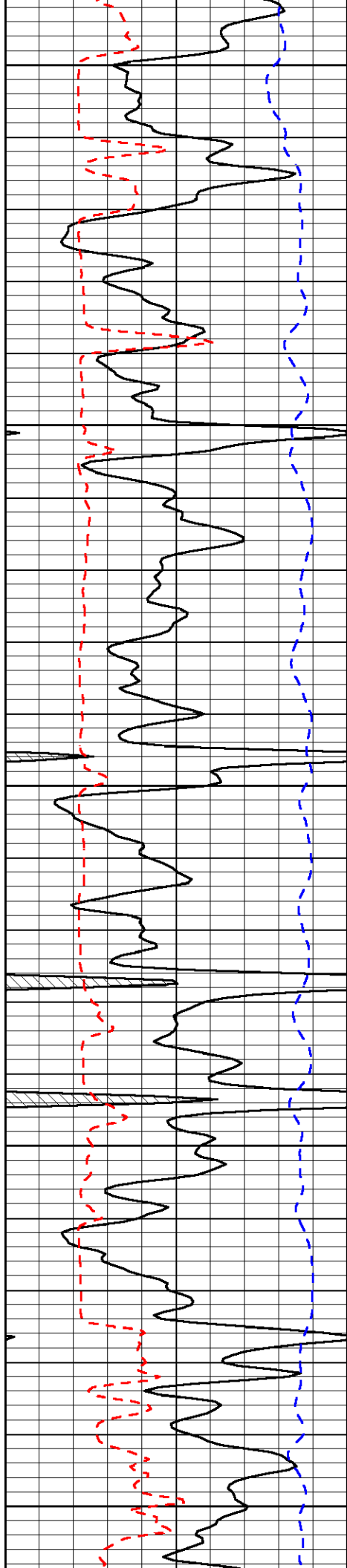


-31

-31

-31

-30



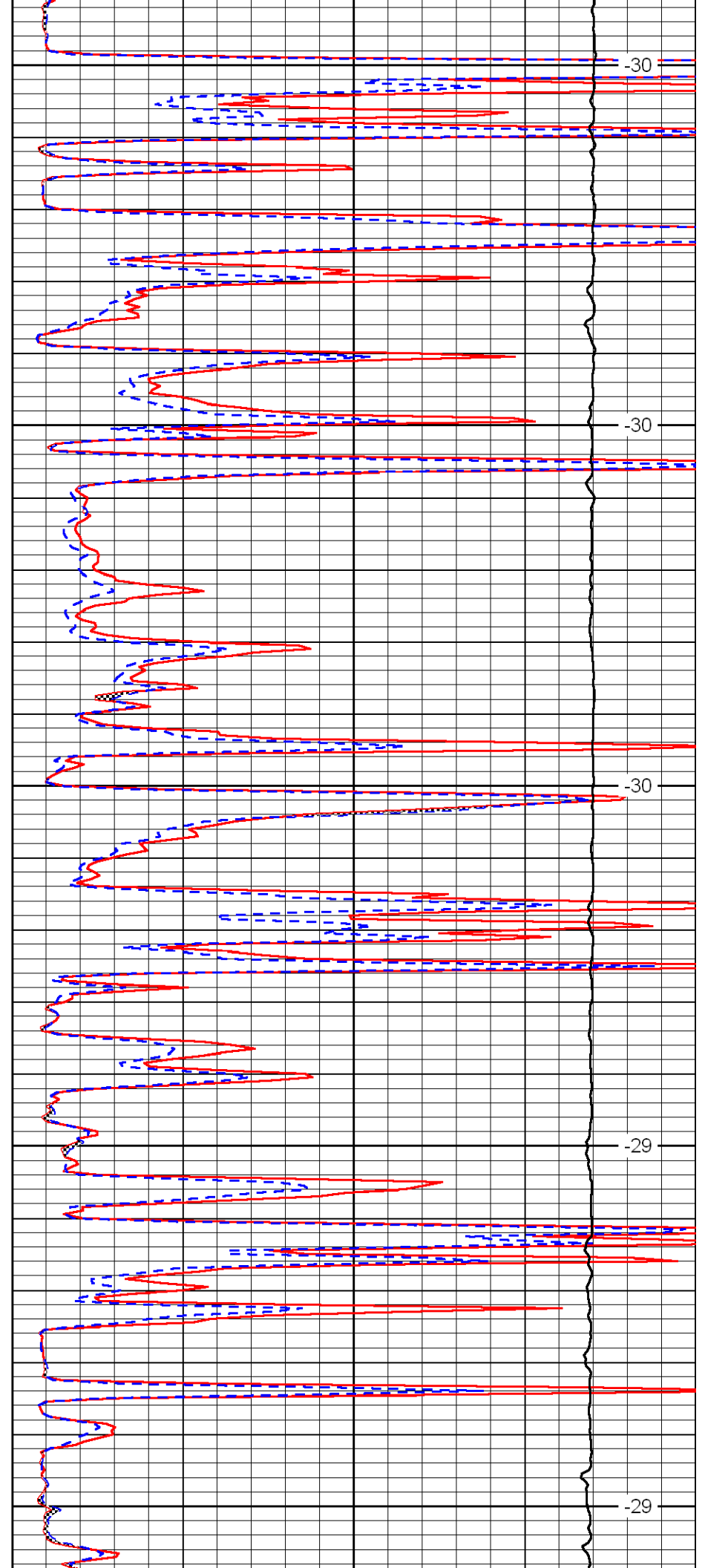
2650

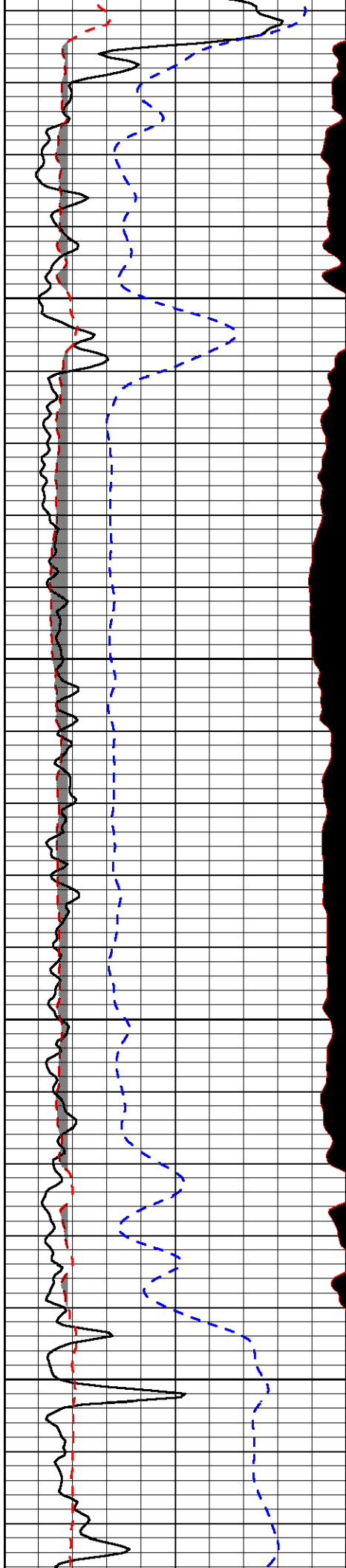
2700

2750

2800

2850



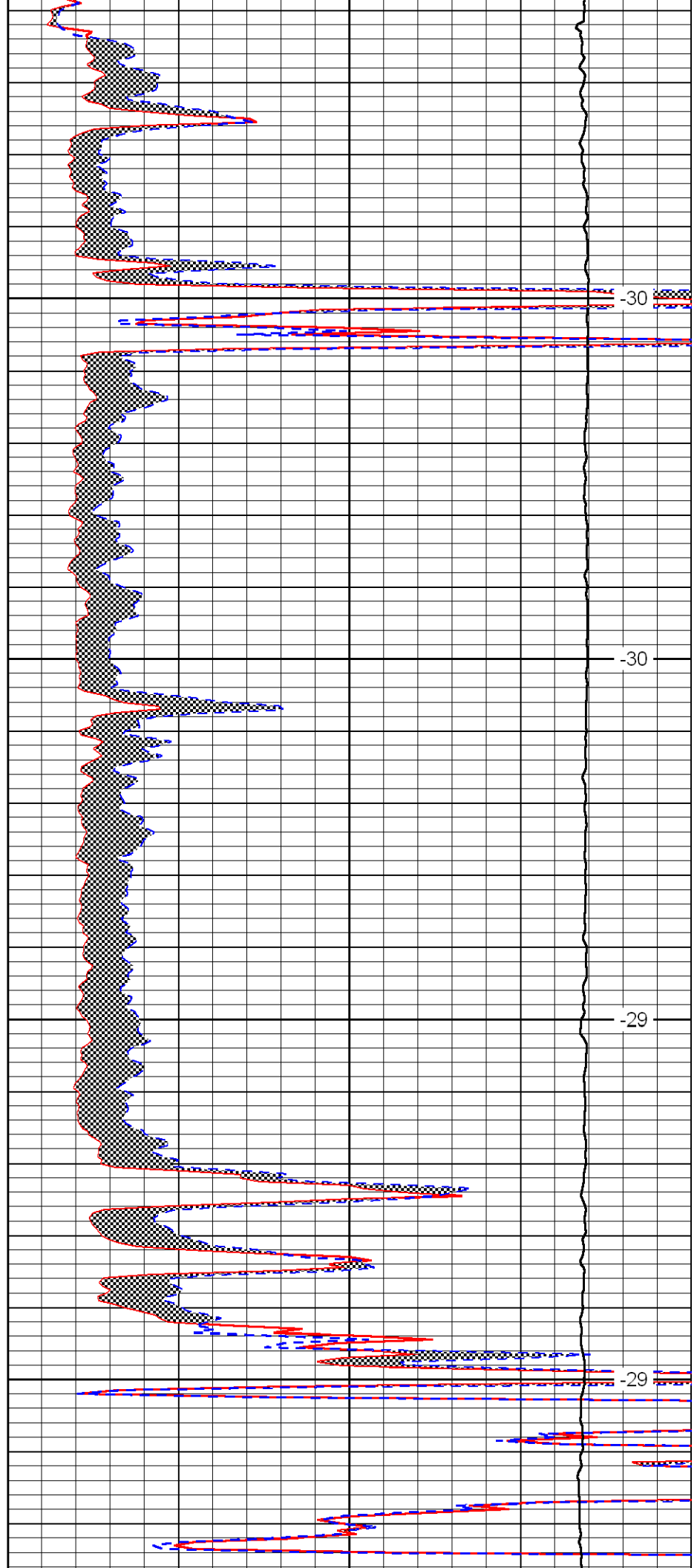


2900

2950

3000

3050

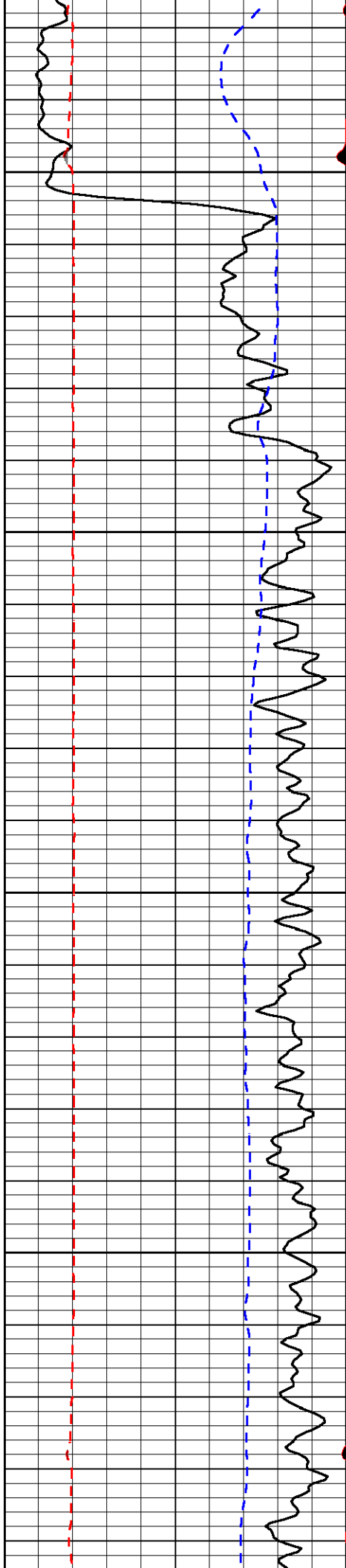


-30

-30

-29

-29

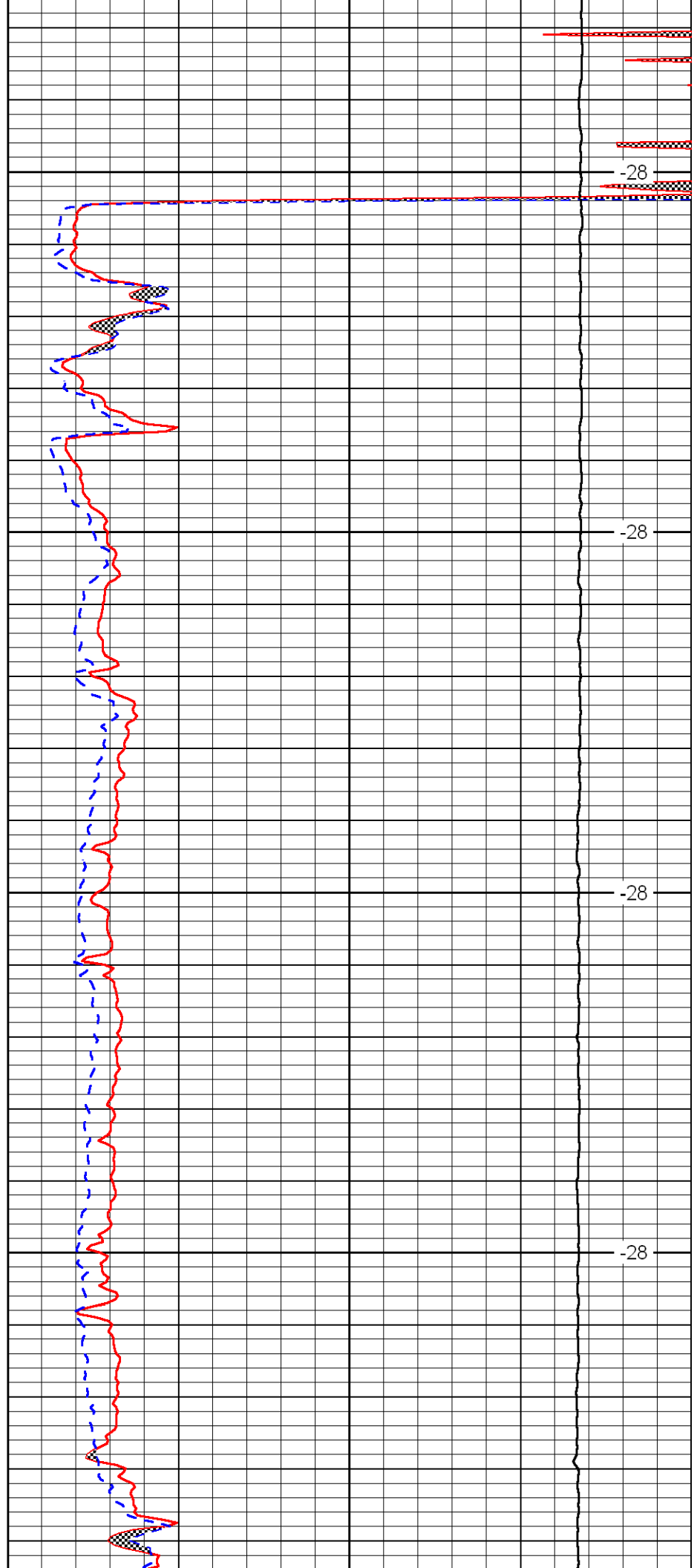


3100

3150

3200

3250

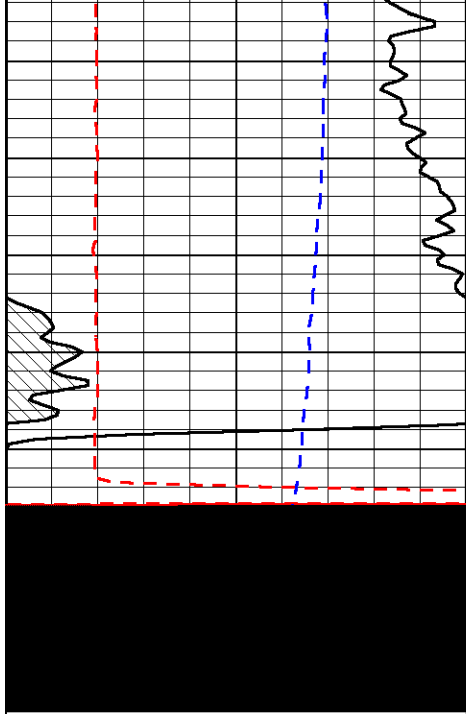


-28

-28

-28

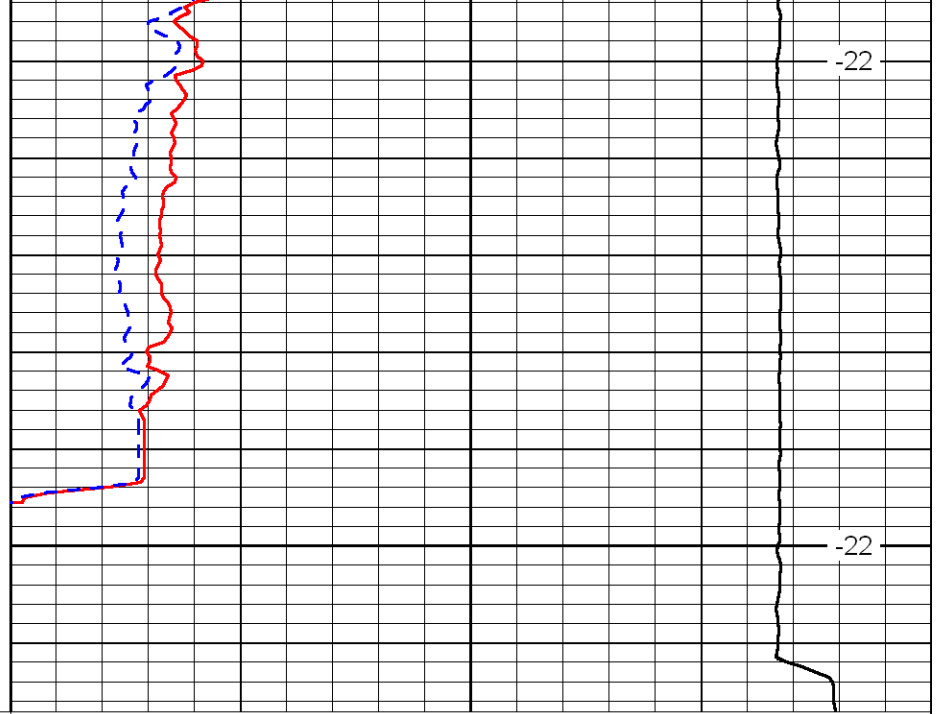
-28



0	Gamma Ray	150
6	MCAL (GAPI)	16
2.875	Mud Cake (GAPI)	7.875
-200	SP	0

3300

3350



0	Micro Inverse 1 X 1	40
0	Micro Normal 2''	40
10000	Line Weight	0

-22

-22

LSPD