

LOG-TECH



DIGITAL LOG (785) 625-3858

Dual Induction Log

API No.	15-113-21352-00-00	
Company	K&S Oil Company	
Well	Unruh #7	
Field	Canton North	
County	McPherson	State Kansas
Location	2145' FSL & 1425' FEL	
Sec: 35	Twp: 18S	Rge: 1W
Permanent Datum	Ground Level	Elevation 1535
Log Measured From	Kelly Bushing	9 Ft. Above Perm. Datum
Drilling Measured From	Kelly Bushing	K.B. 1544 D.F. 1535 G.L. 1535
Other Services CNL/CDL MEL/BHCS		

Date	6/28/2012	
Run Number	One	
Depth Driller	3360	
Depth Logger	3362	
Bottom Logged Interval	3361	
Top Log Interval	200	
Casing Driller	8.625 @ 213	
Casing Logger	211	
Bit Size	7.875	
Type Fluid in Hole	Chemical	
Salinity, ppm CL	1200	
Density / Viscosity	9.3	36
pH / Fluid Loss	9.0	9.4
Source of Sample	Flowline	
Rm @ Meas. Temp	1.05 @ 78	
Rmf @ Meas. Temp	0.79 @ 78	
Rmc @ Meas. Temp	1.4 @ 78	
Source of Rmf / Rmc	Charts	
Rm @ BHT	0.73 @ 112	
Operating Rig Time	5 Hours	
Max Rec. Temp. F	112	
Equipment Number	91	
Location	Hays	
Recorded By	D. Schmidt	
Witnessed By	Matt Avcin	
	Jay Krehbiel	

<<< Fold Here >>>

All interpretations are opinions based on inferences from electrical or other measurements and we cannot and do not guarantee the accuracy or correctness of any interpretation, and we shall not, except in the case of gross or willful negligence on our part, be liable or responsible for any loss, costs, damages, or expenses incurred or sustained by anyone resulting from any interpretation made by any of our officers, agents or employees. These interpretations are also subject to our general terms and conditions set out in our current Price Schedule.

Comments

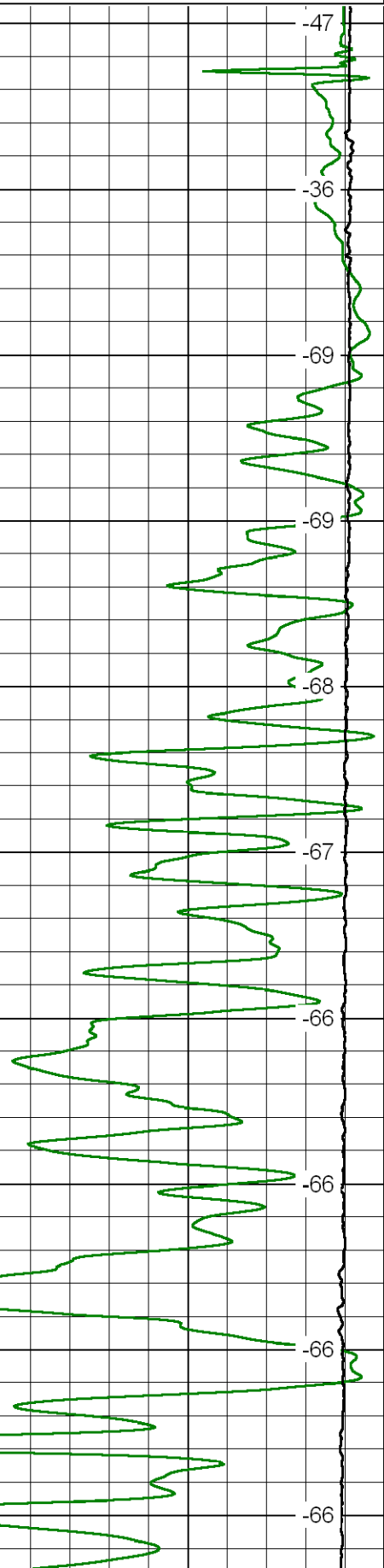
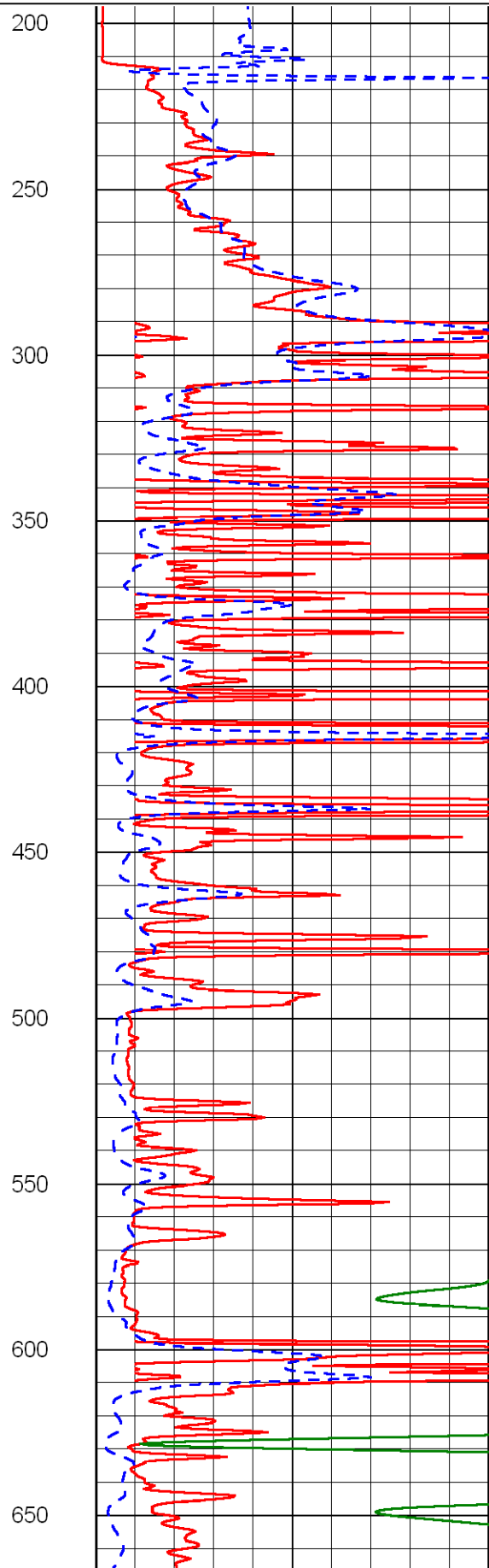
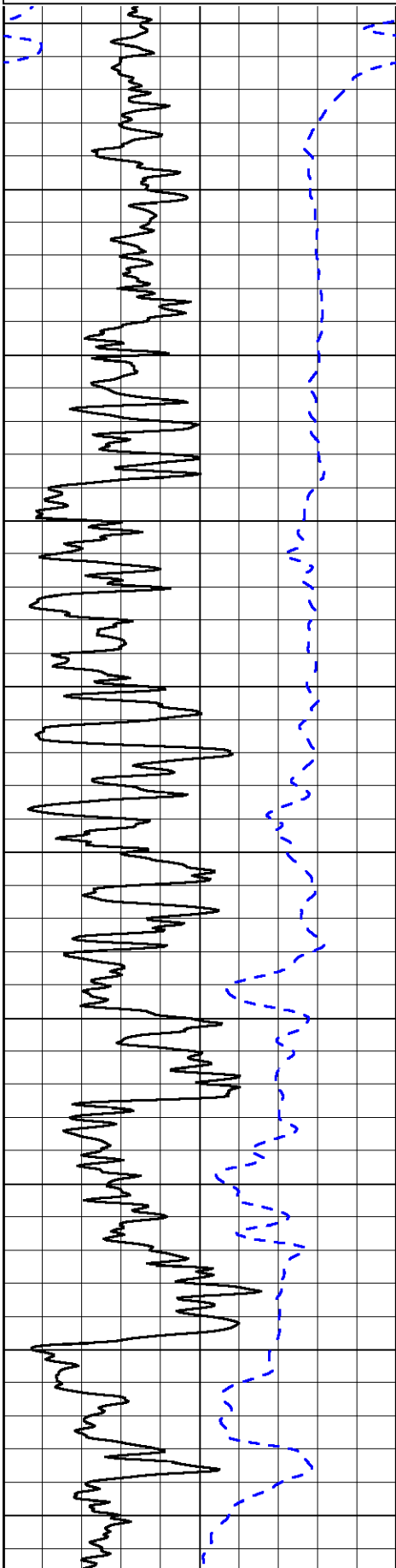
Thank you for using Log-Tech, Inc.
 (785) 625-3858
 Canton,
 2 E to 29th Ave, 4.3 N,
 W into

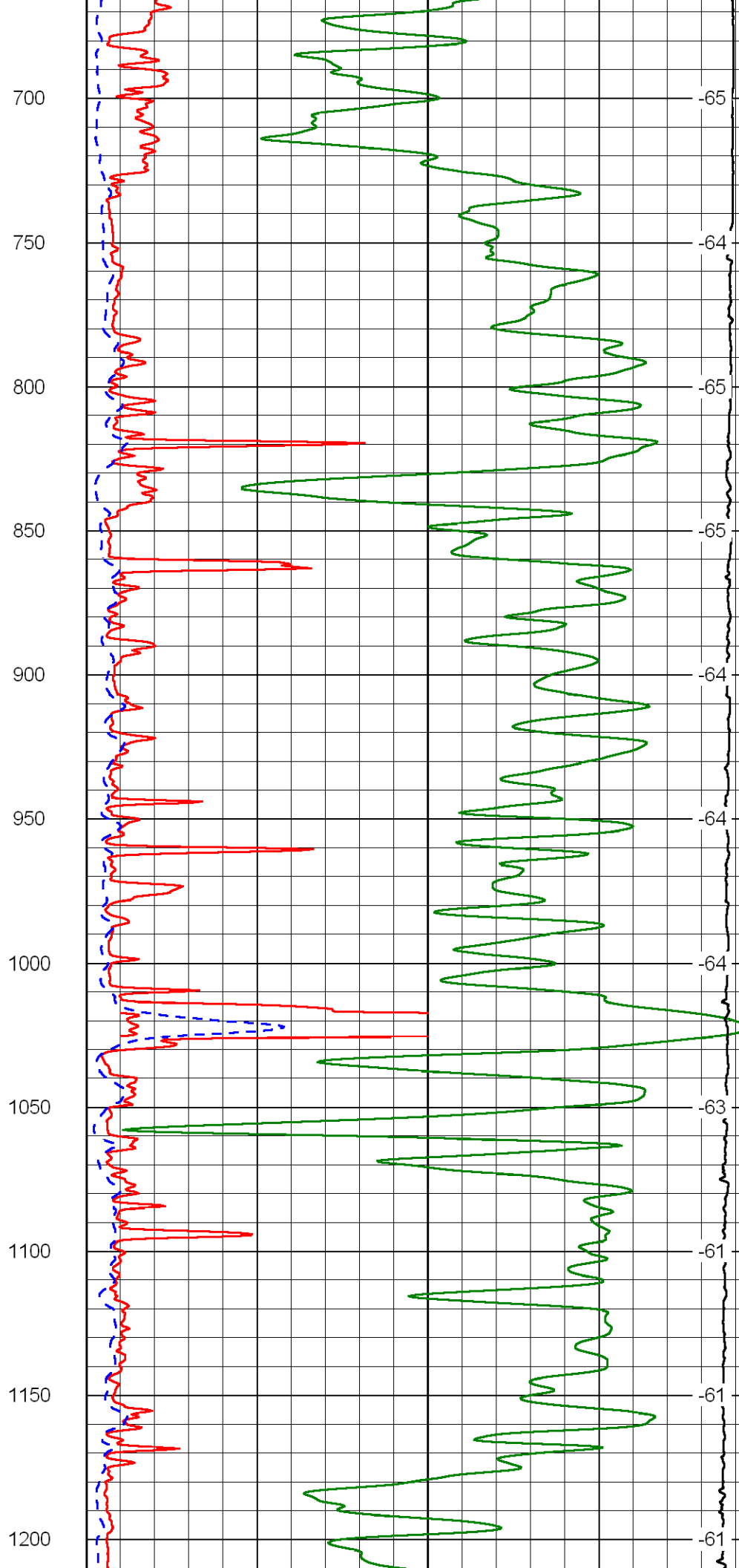
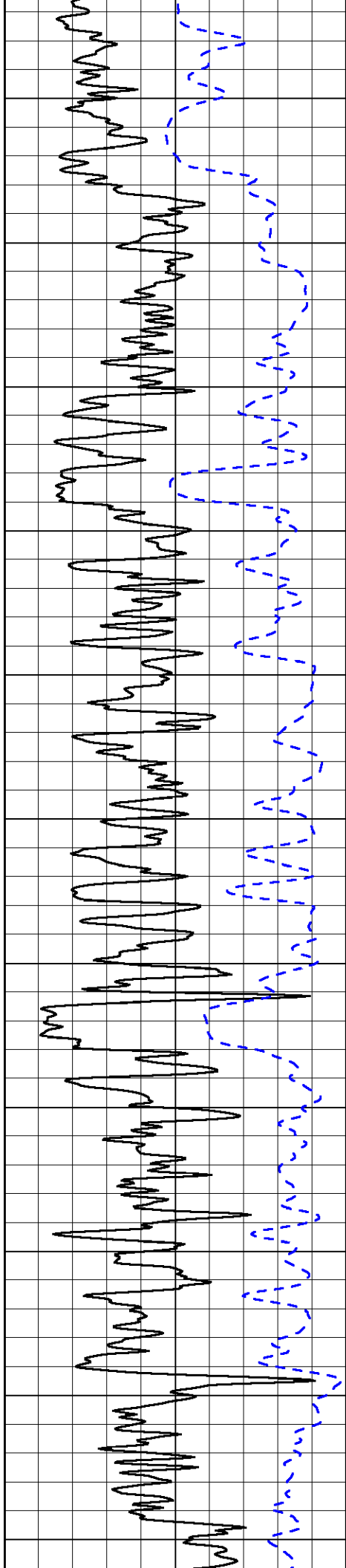
Database File: k&s_062812hd.db
 Dataset Pathname: dil/kstack2
 Presentation Format: dil2in
 Dataset Creation: Thu Jun 28 12:46:37 2012
 Charted by: Depth in Feet scaled 1:600

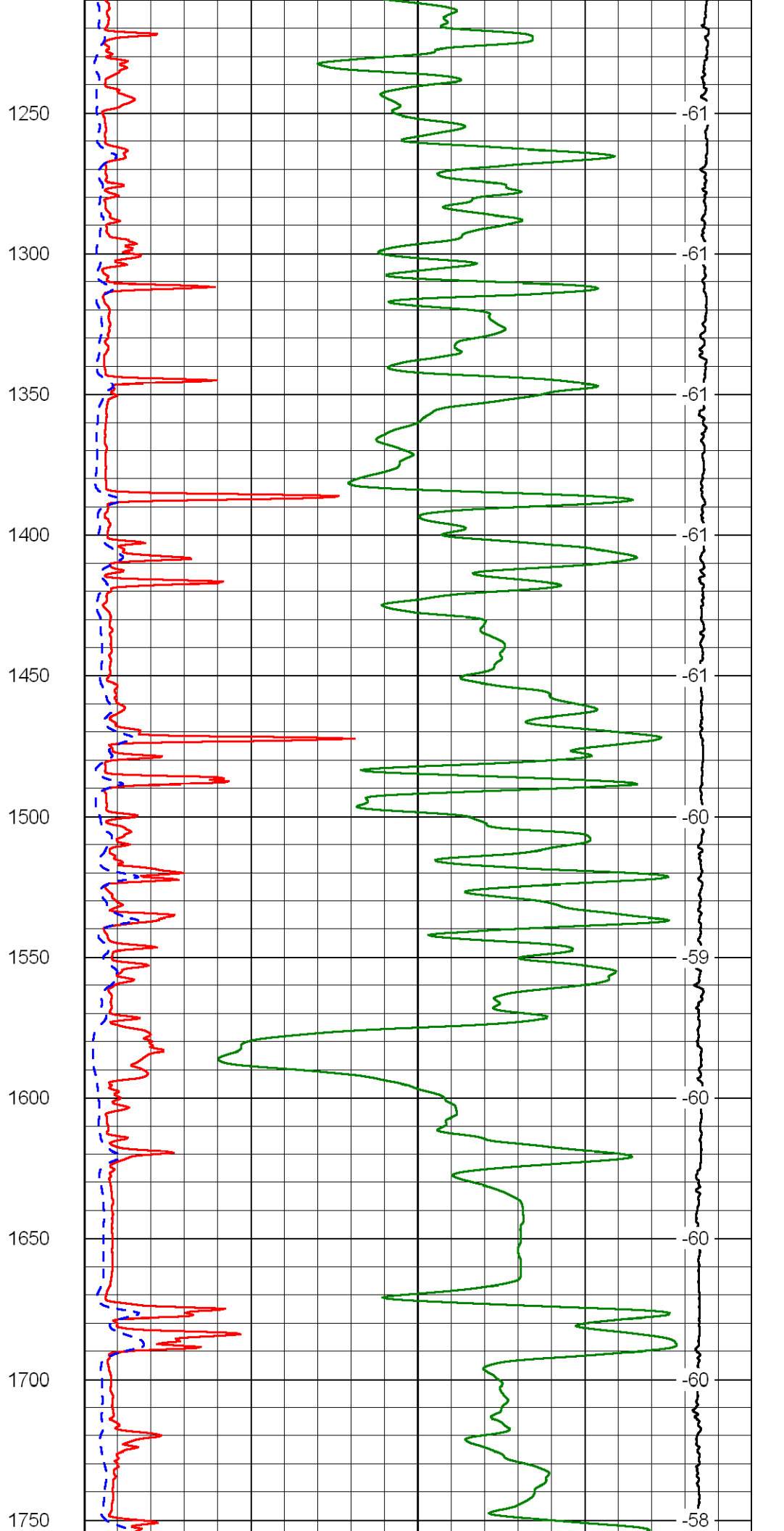
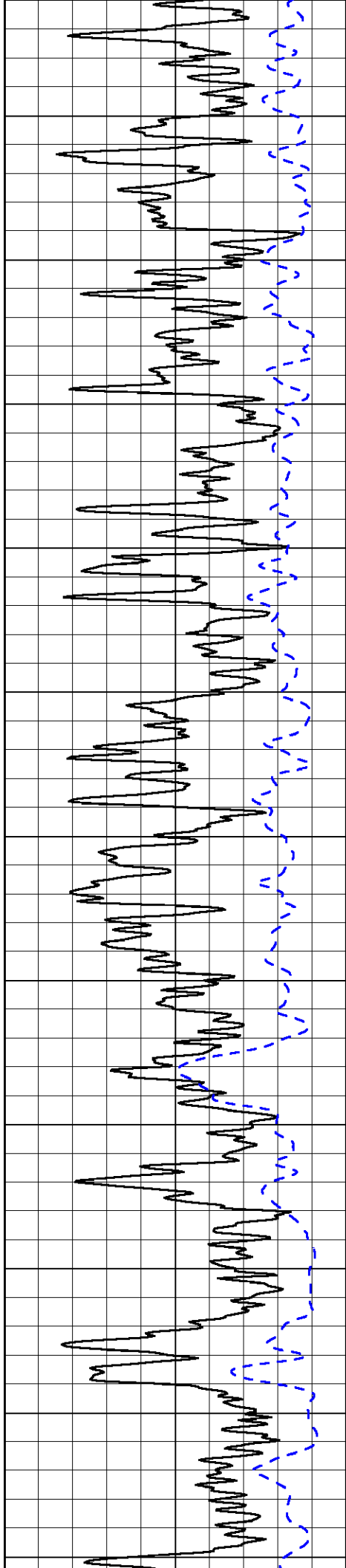
0 Gamma Ray 150
-200 SP 0

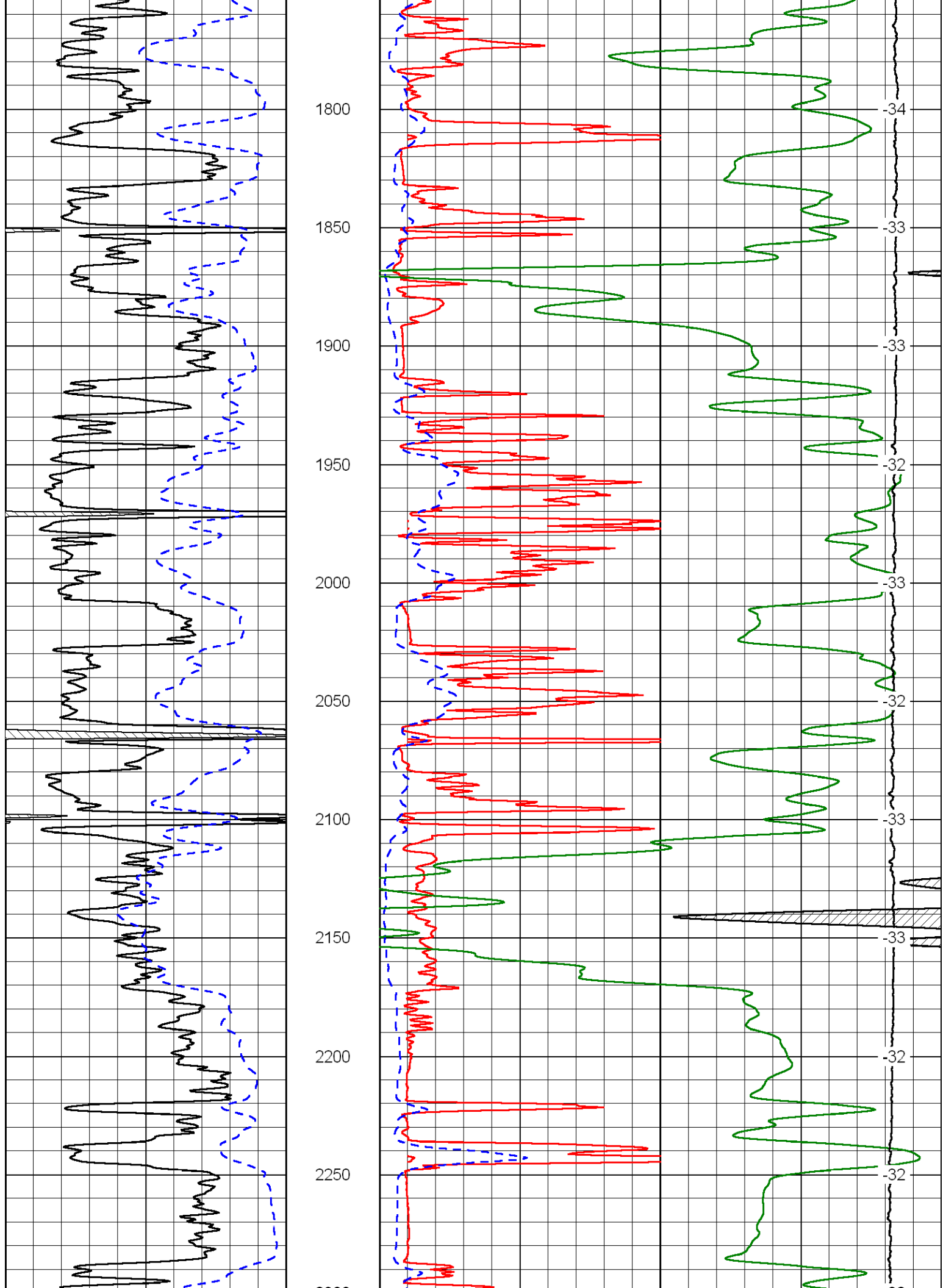
0 Shallow Resistivity 50
0 Deep Resistivity 50
1000 Conductivity 0
15000 Line Tension 0
50 Shallow Resistivity 50
50 Deep Resistivity 50

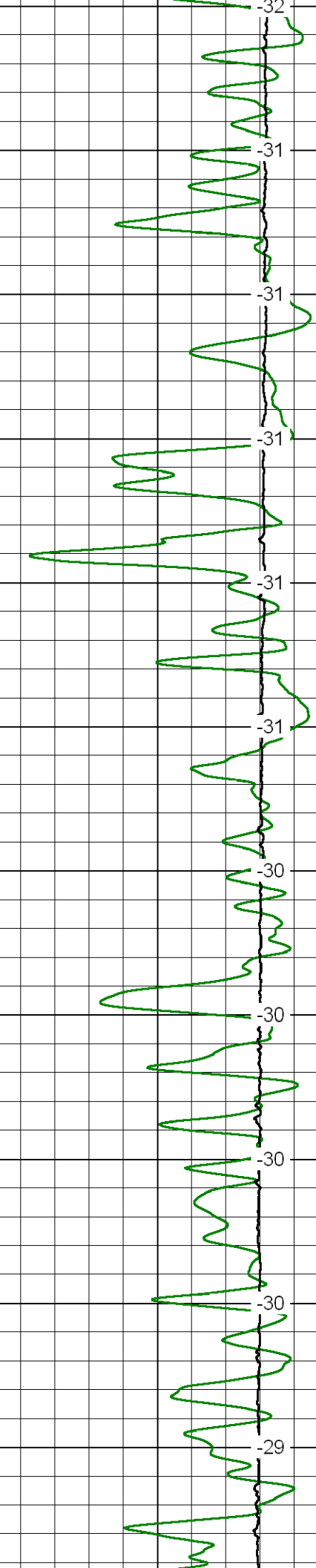
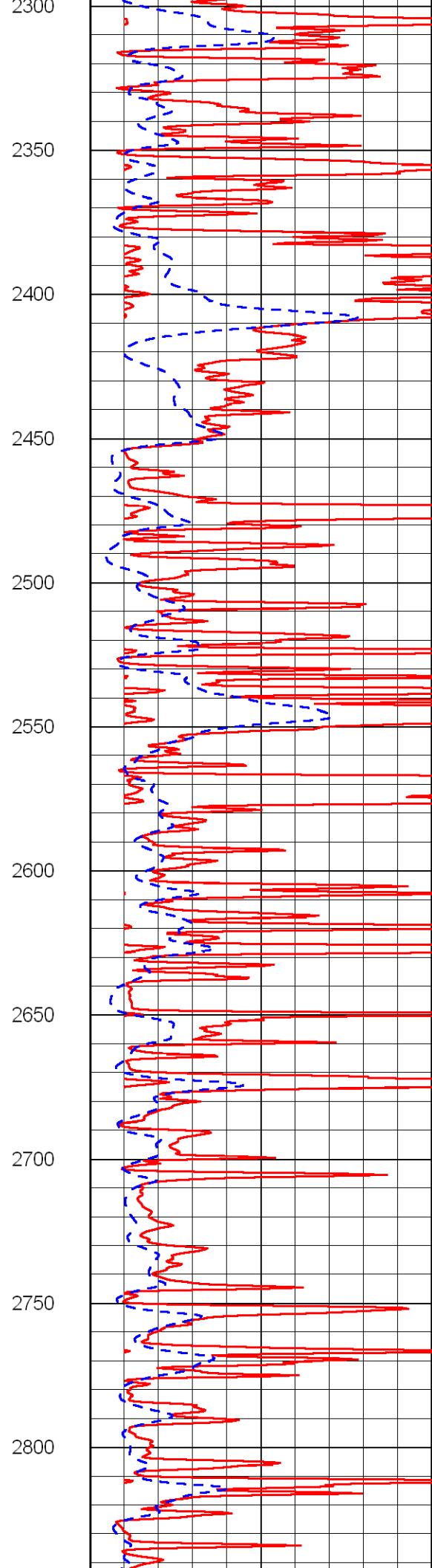
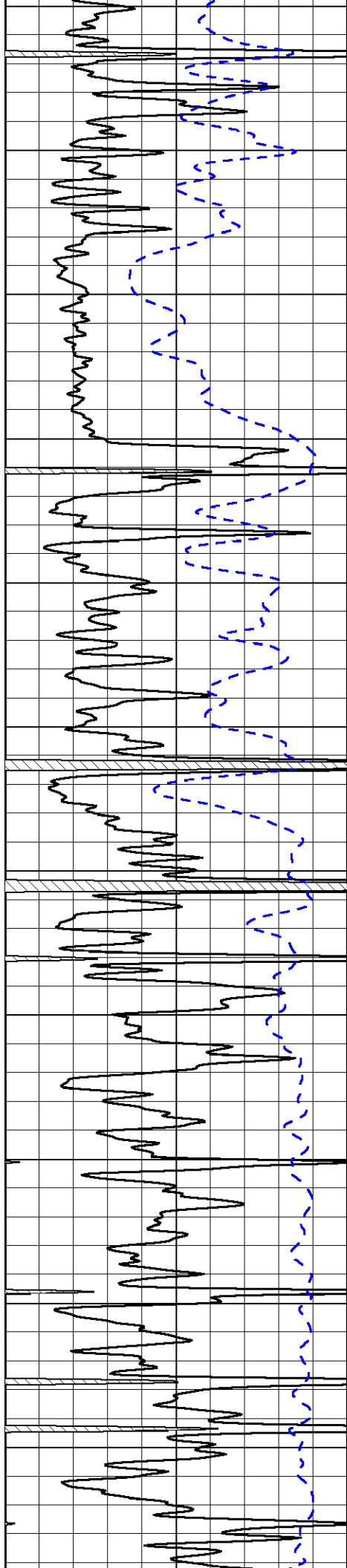
LSPD

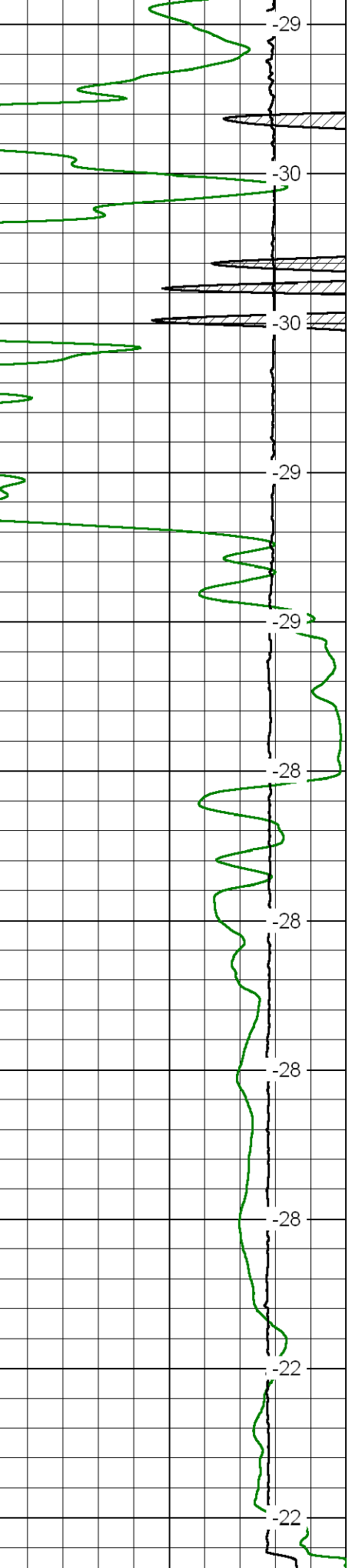
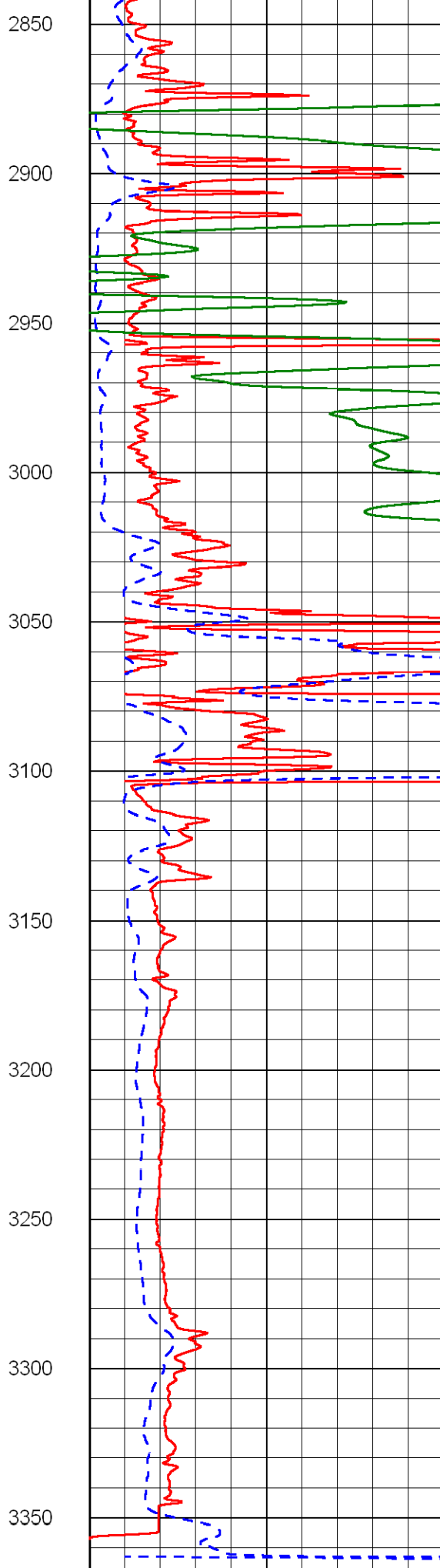
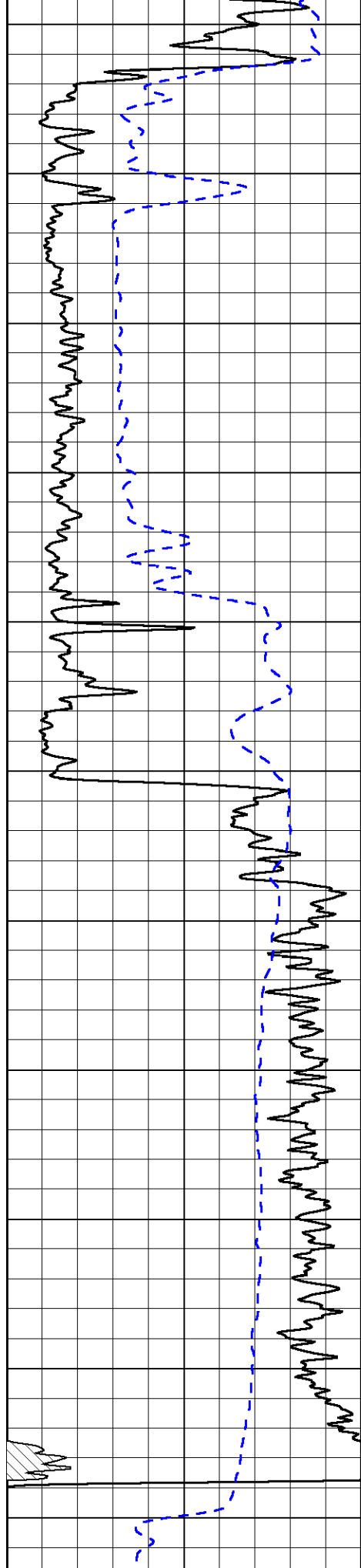












0 150
-200 0

0 50
0 50

0 50
0 50

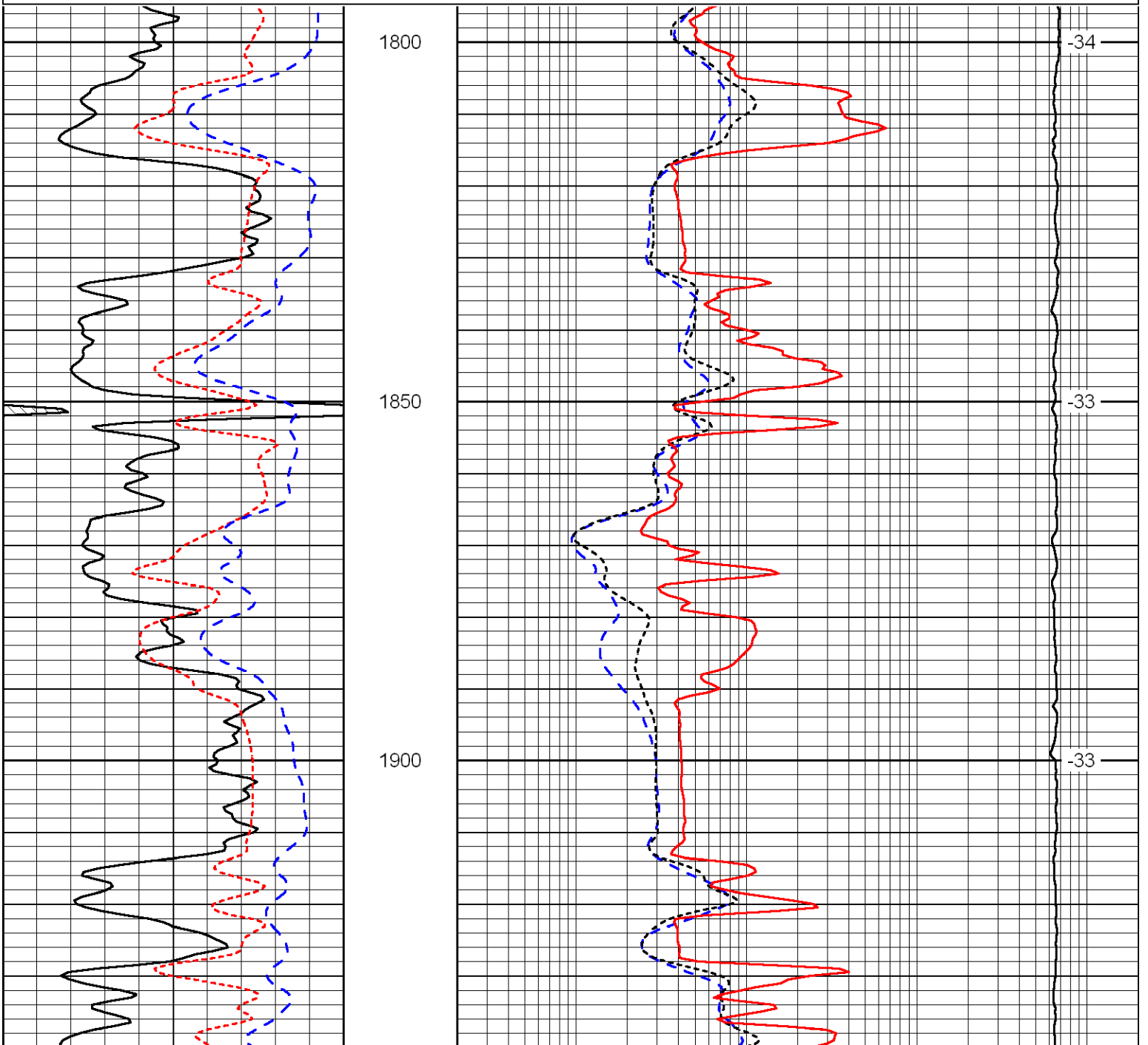
200	SP	0
-----	----	---

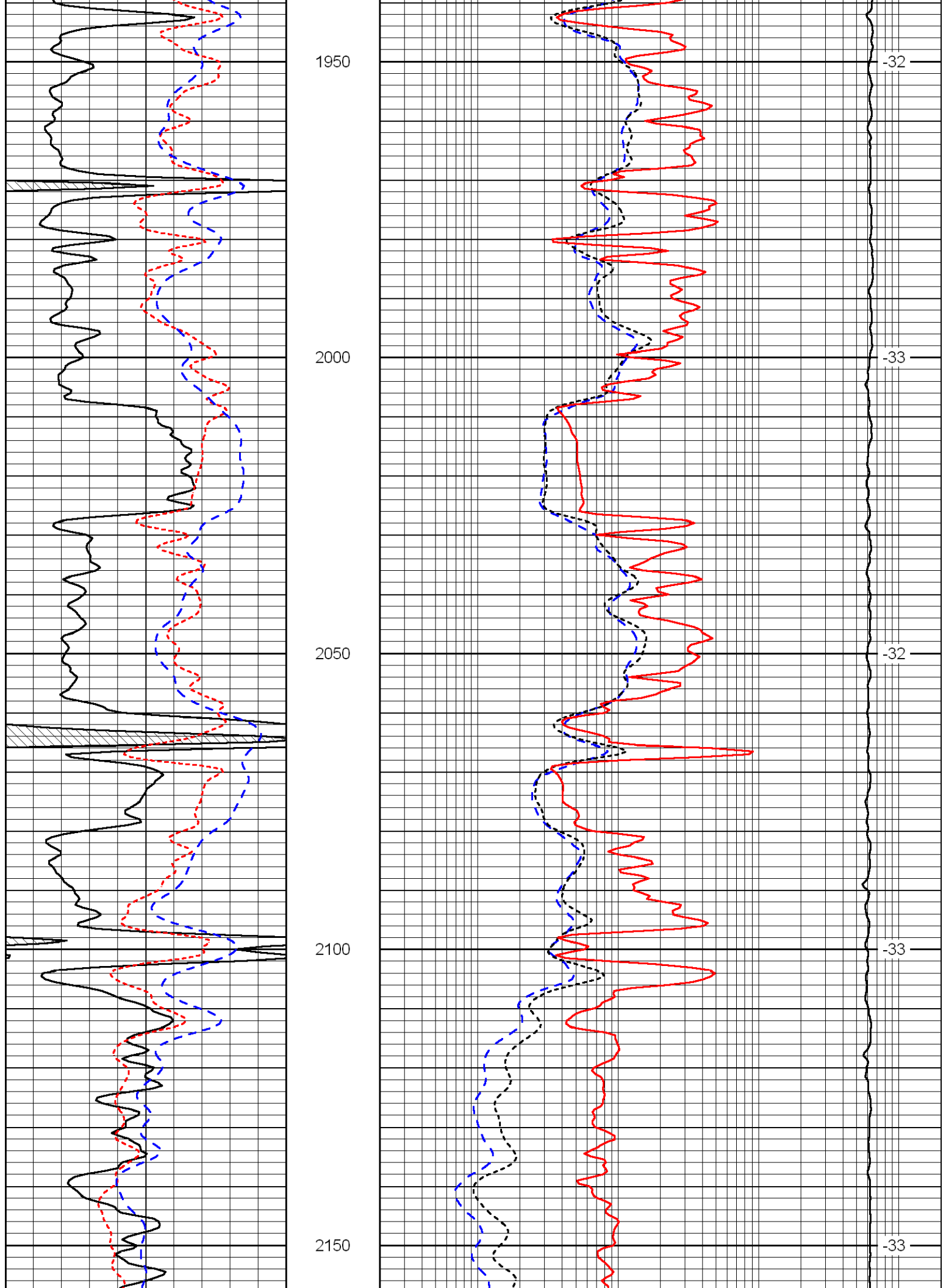
0	Deep Resistivity	50
1000	Conductivity	0
15000	Line Tension	0
50	Shallow Resistivity	500
50	Deep Resistivity	500

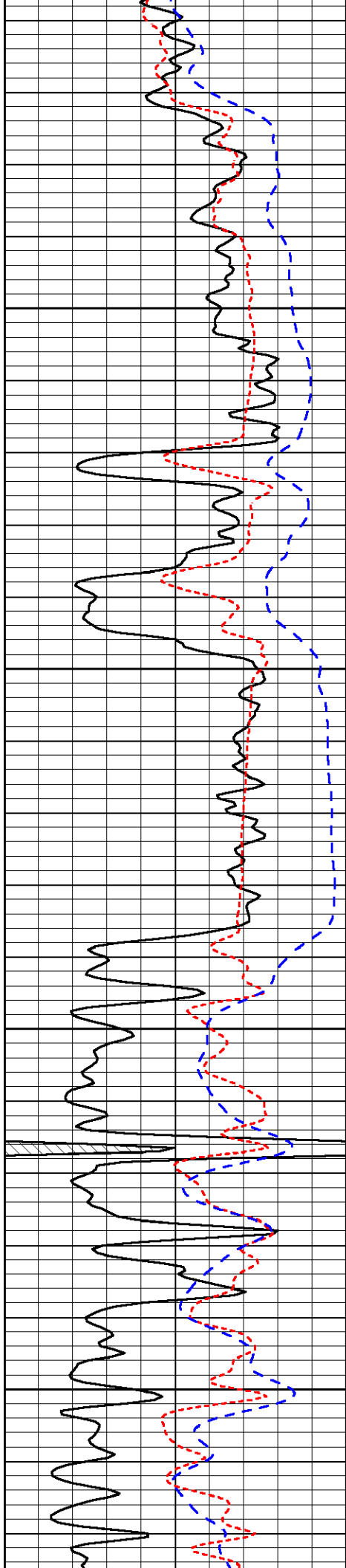
Database File: k&s_062812hd.db
 Dataset Pathname: dil/kstack2
 Presentation Format: dil
 Dataset Creation: Thu Jun 28 12:46:37 2012
 Charted by: Depth in Feet scaled 1:240

0	Gamma Ray	150
-160	RXO/RT	40
-200	SP	0

0.2	Deep Resistivity	2000
0.2	Medium Resistivity	2000
0.2	Shallow Resistivity	2000
10000	Line Tension	0





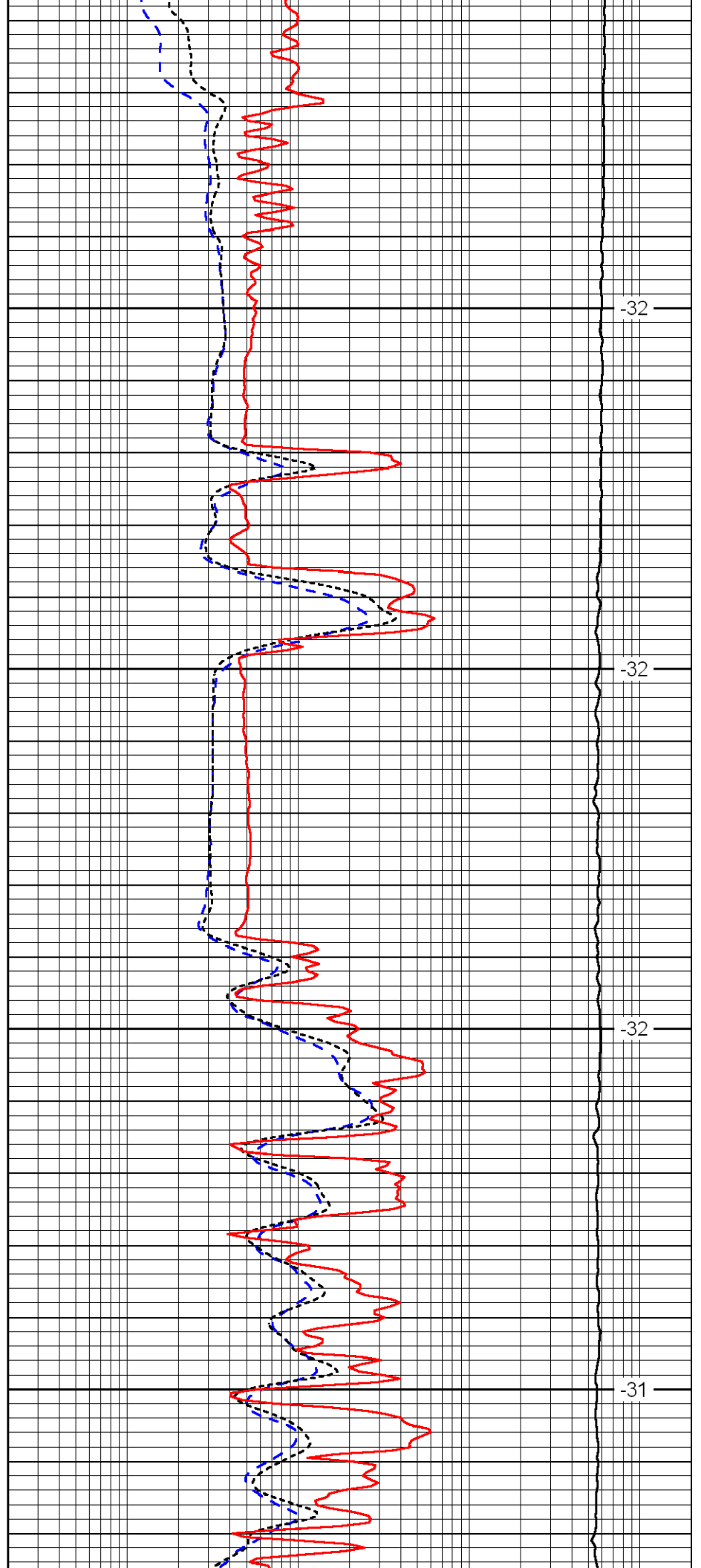


2200

2250

2300

2350

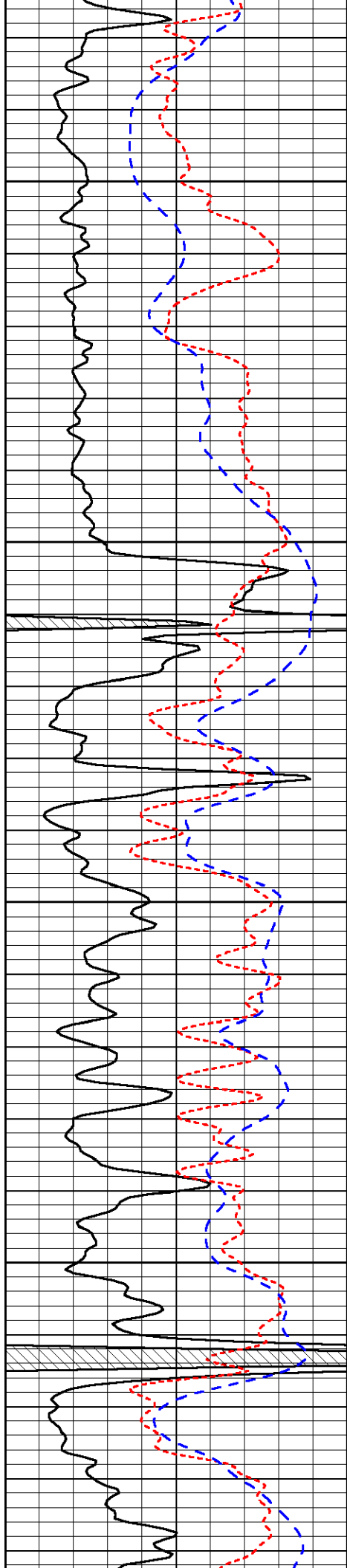


-32

-32

-32

-31

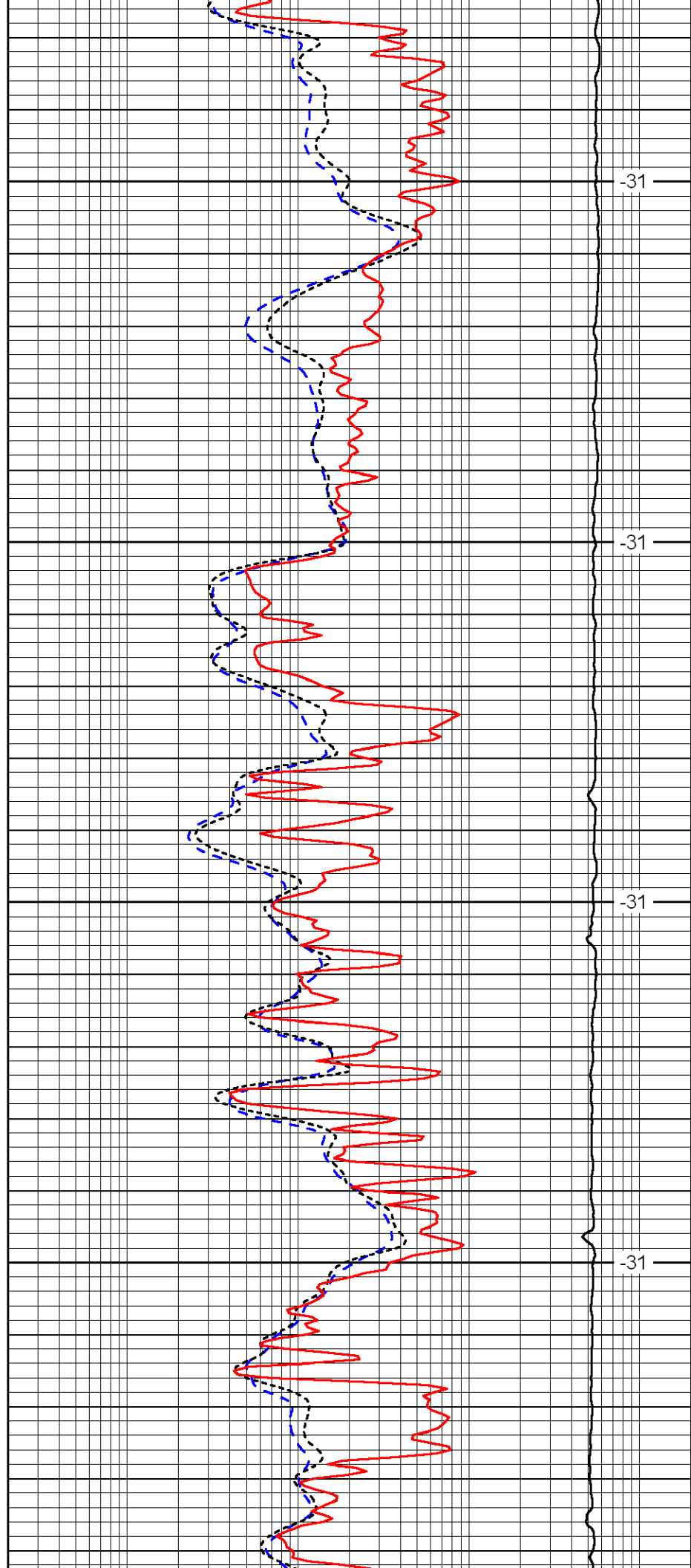


2400

2450

2500

2550

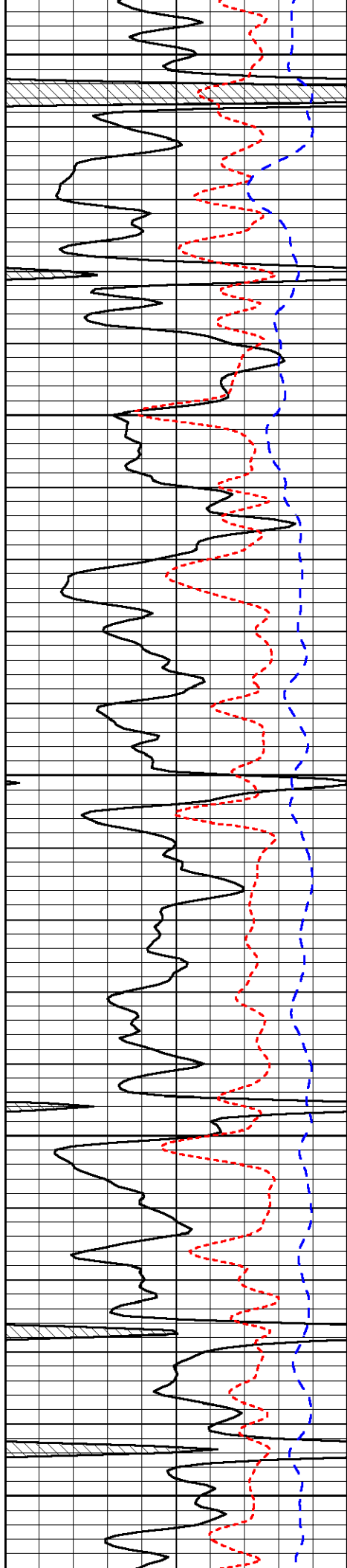


-31

-31

-31

-31



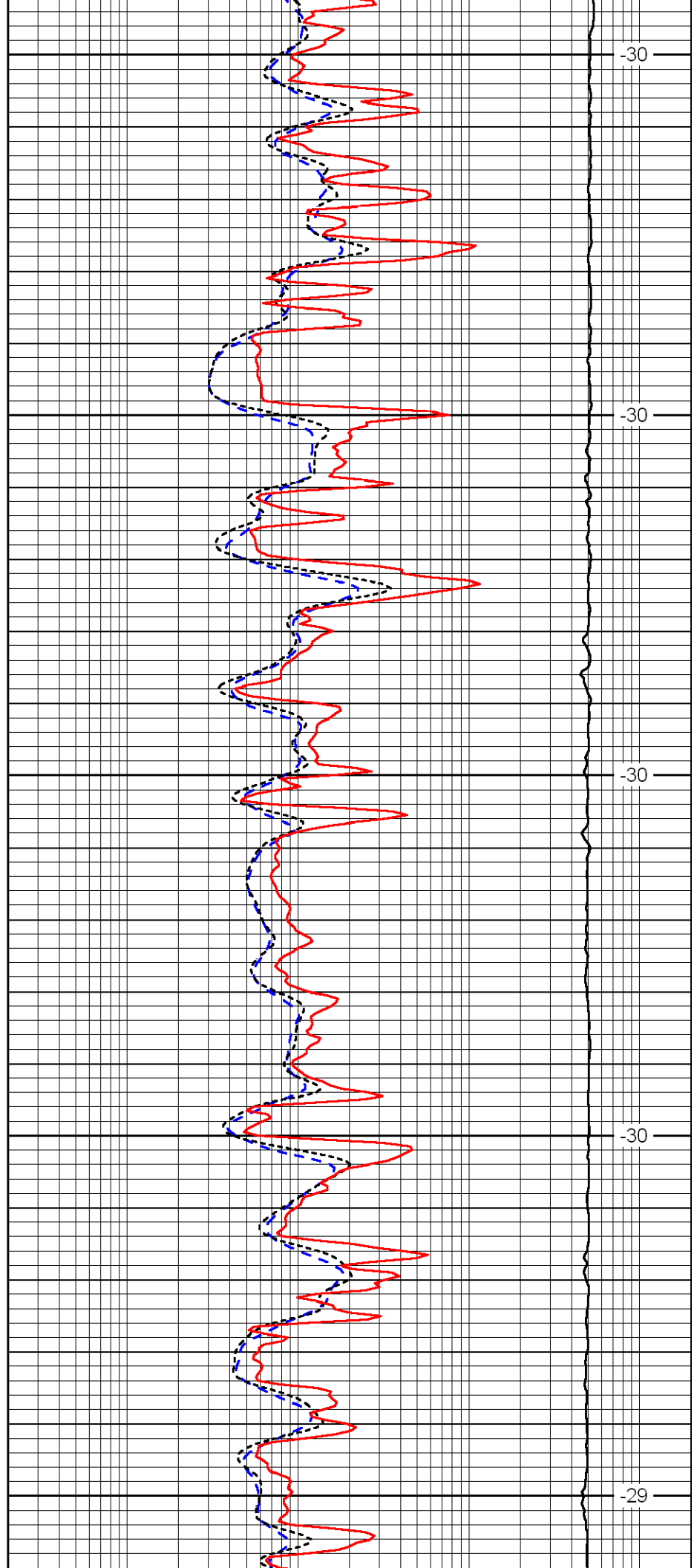
2600

2650

2700

2750

2800



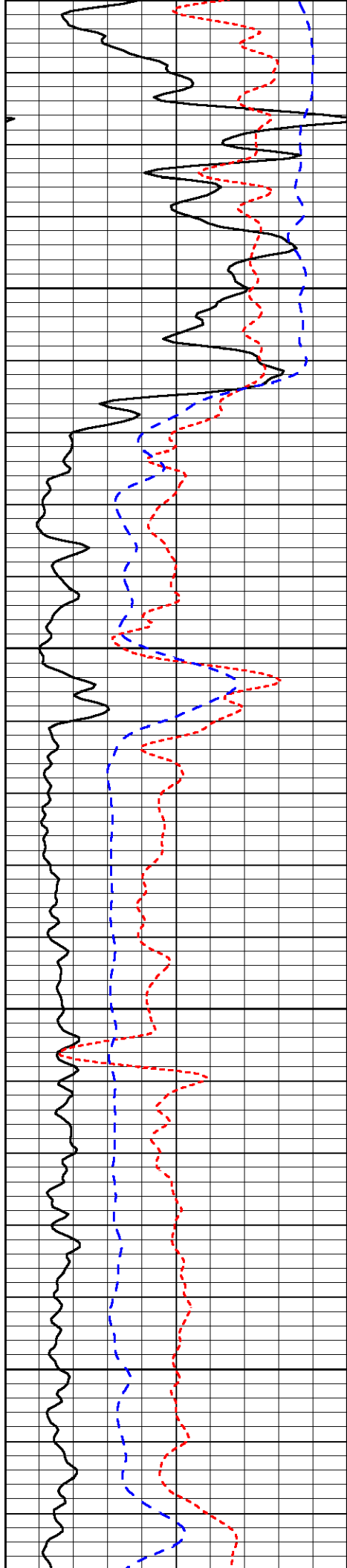
-30

-30

-30

-30

-29

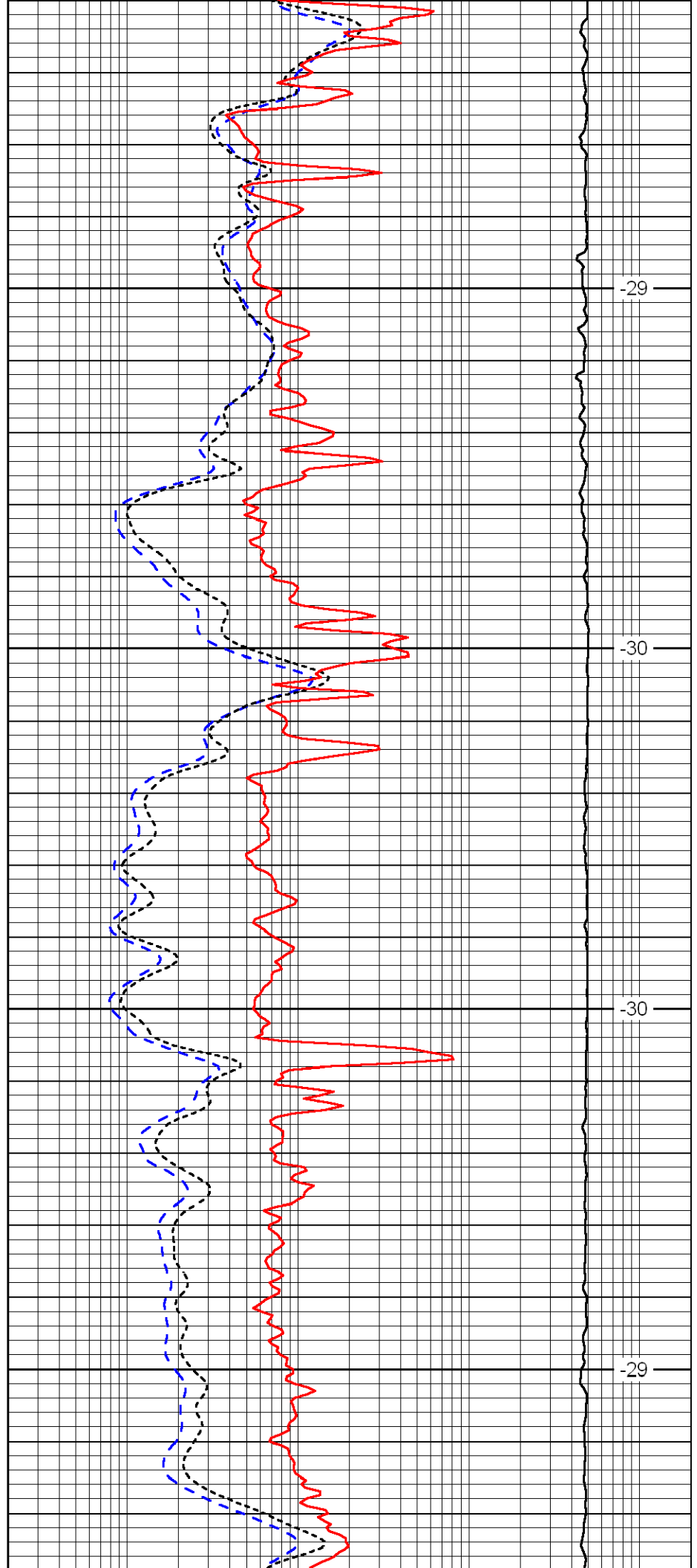


2850

2900

2950

3000

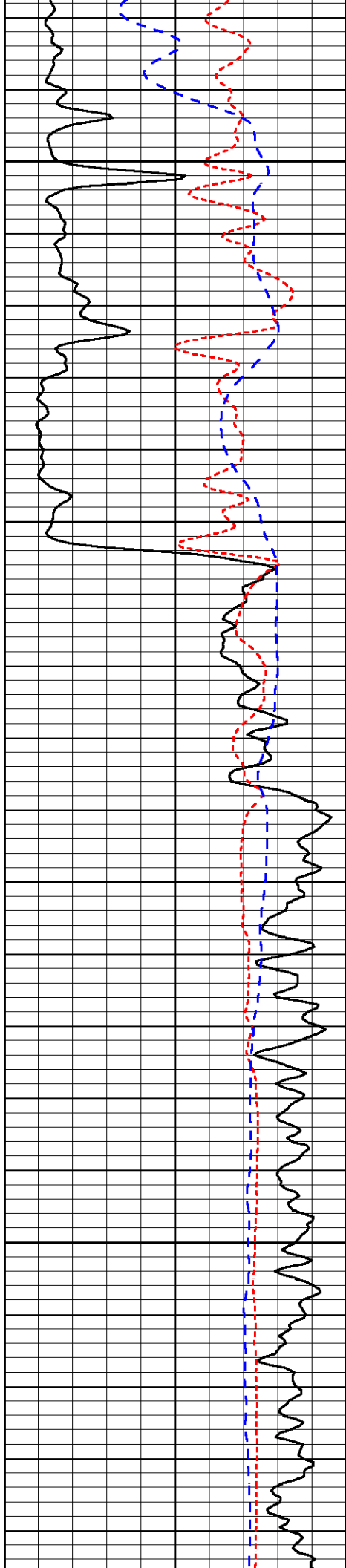


-29

-30

-30

-29

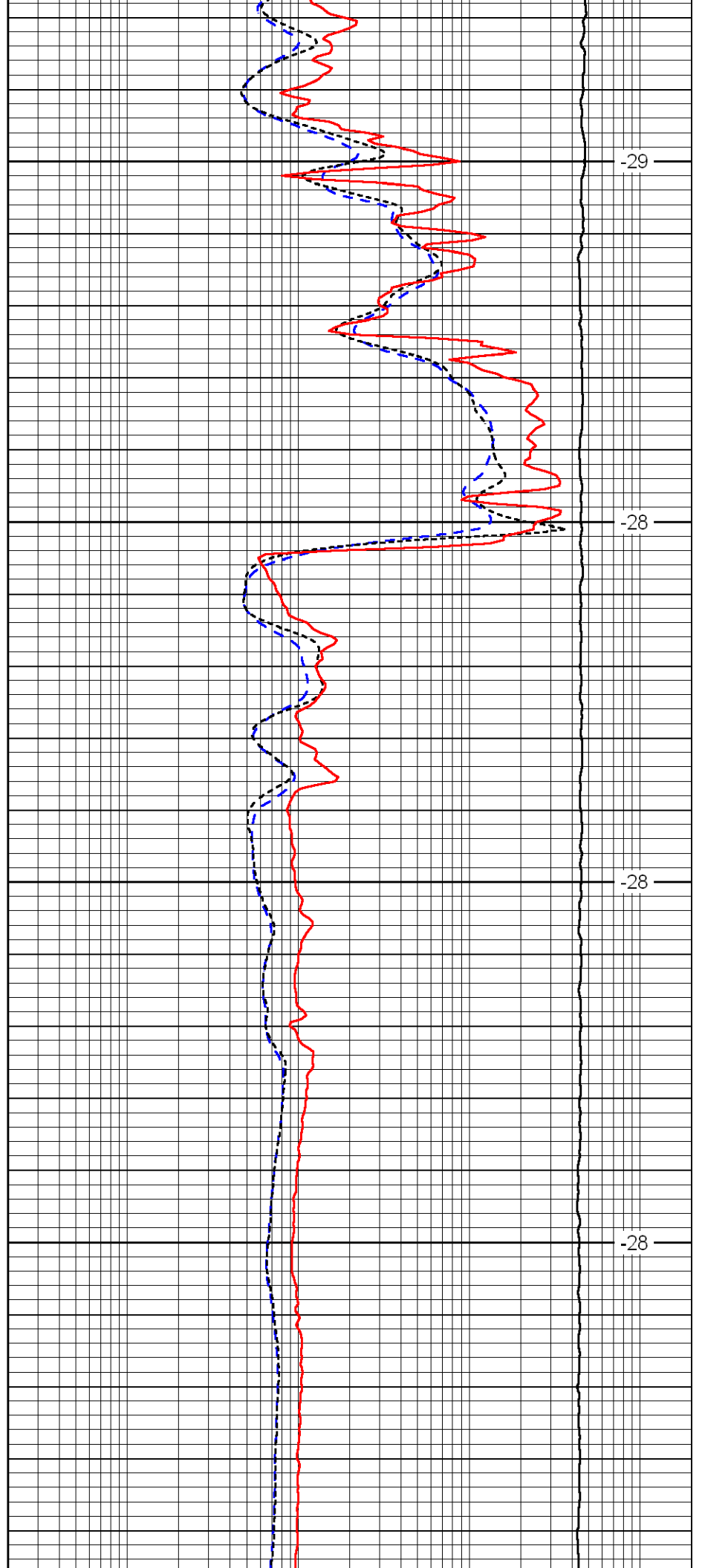


3050

3100

3150

3200

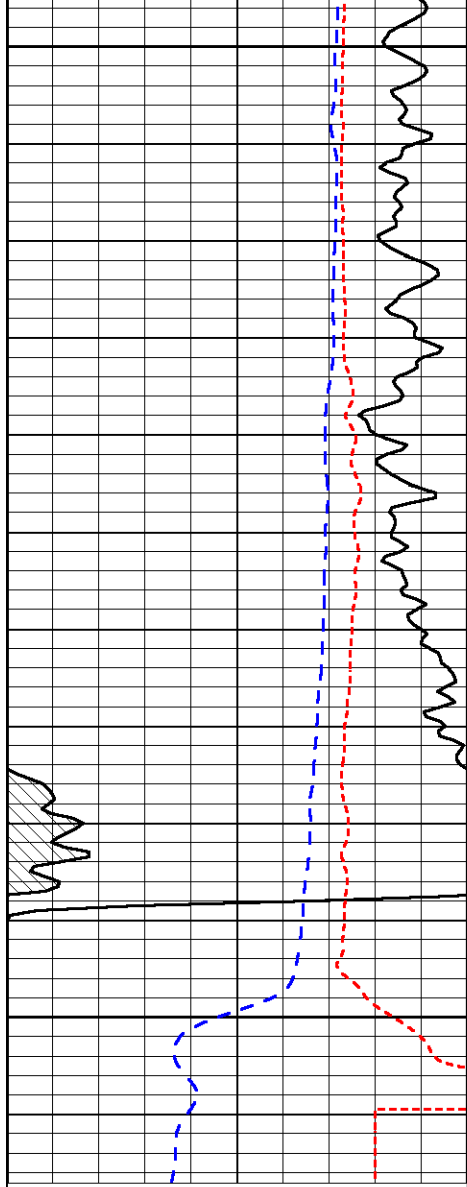


-29

-28

-28

-28

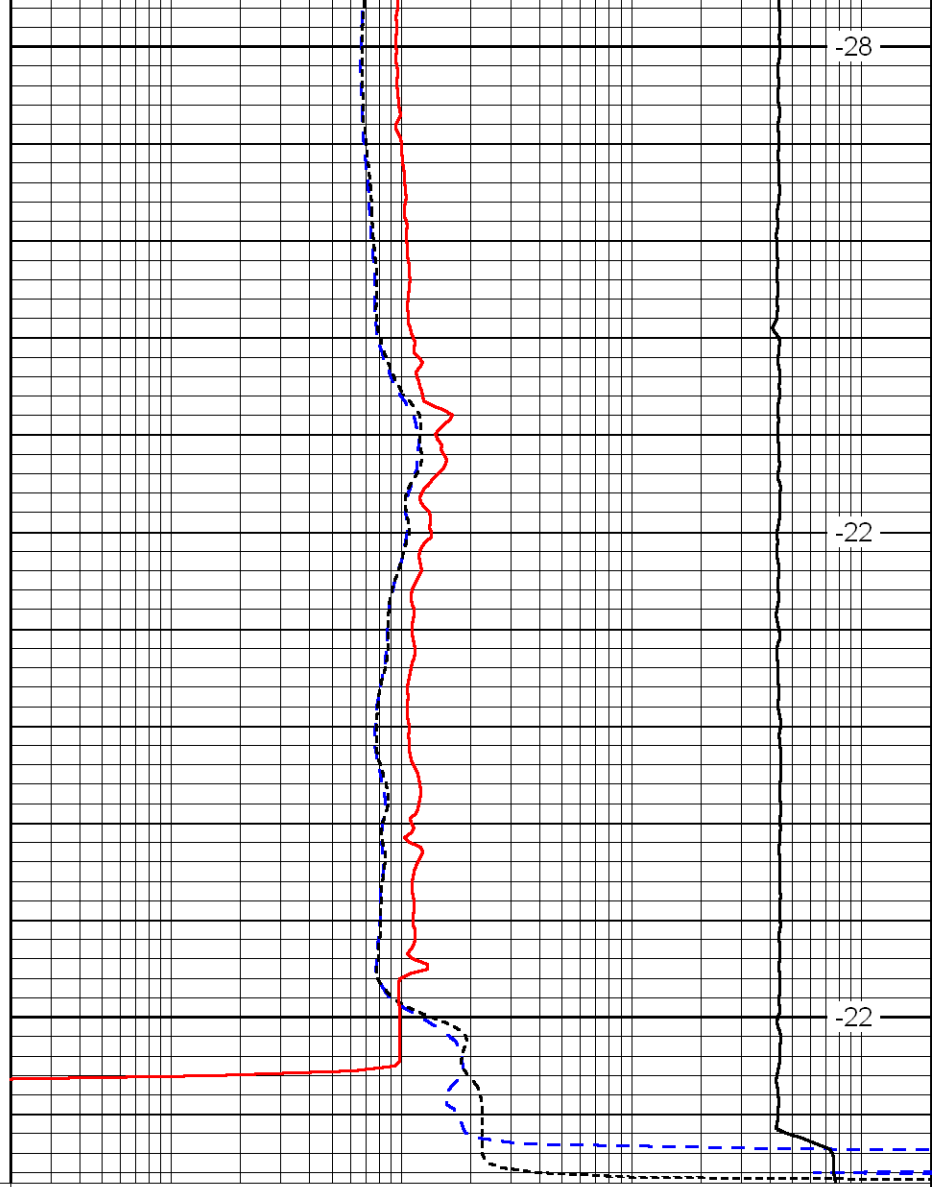


0	Gamma Ray	150
-160	RXO/RT	40
-200	SP	0

3250

3300

3350



-28

-22

-22

0.2	Deep Resistivity	2000
0.2	Medium Resistivity	2000
0.2	Shallow Resistivity	2000
10000	Line Tension	0

LSPD