



GAMMA RAY  
NEUTRON  
CEMENT BOND  
COMPLETION LOG

Company SOUTHWINDS ENERGY, LLC  
Well MELANDER #45  
Field WAYSIDE-HAVANA  
County MONTGOMERY State KANSAS

Location: 1930 PGL & 350' FEL  
NW SE NE SE  
SEC 2 TWP 34S RGE 14E  
Log Measured From GL  
Dip/Incl Measured From GL  
Elevation 893EST  
Dip 893EST  
Incl 893EST

Date 10-30-12  
Run Number 11WV  
Depth Logger 722.8  
Top Log Interval 0  
Bottom Log Interval 722.8  
Fluid Level FULL

Type Fluid WATER  
Product Cement 2.76 @ TD @  
Max. Discharge Time SURFACE  
Estimated Cement Top  
Calculated Cement Top  
Amount & Type Cement  
Drilling Contractor 109  
Equipment Number SARCORN Q  
Recorded By DAVIS, A

<<< Fold Here >>>

All interpretations are opinions based on inferences from electrical or other measurements and we cannot and do not guarantee the accuracy or correctness of any interpretation, and we shall not, except in the case of gross or willful negligence on our part, be liable or responsible for any loss, costs, damages, or expenses incurred or sustained by anyone resulting from any interpretation made by any of our officers, agents or employees. These interpretations are also subject to our general terms and conditions set out in our current Price Schedule.

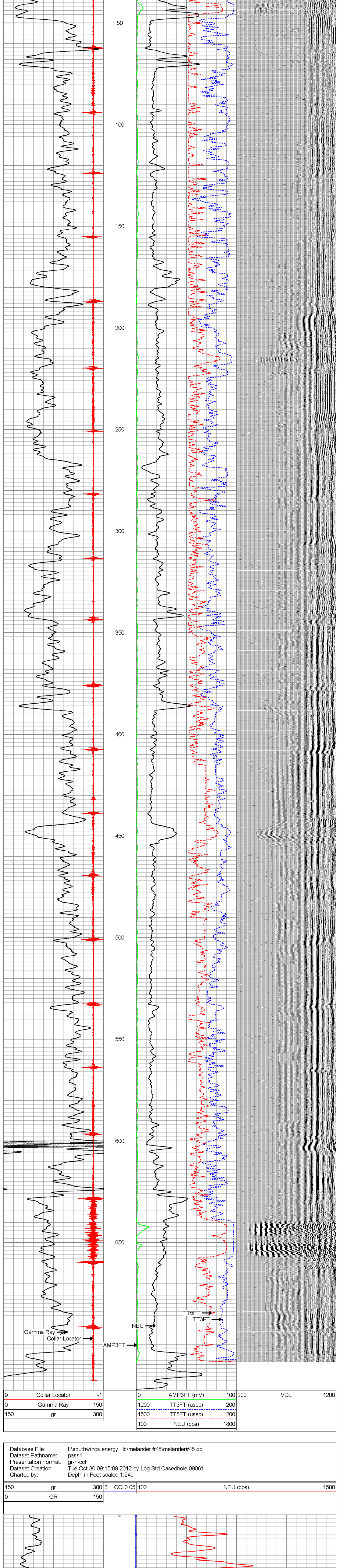
Comments

THANK YOU

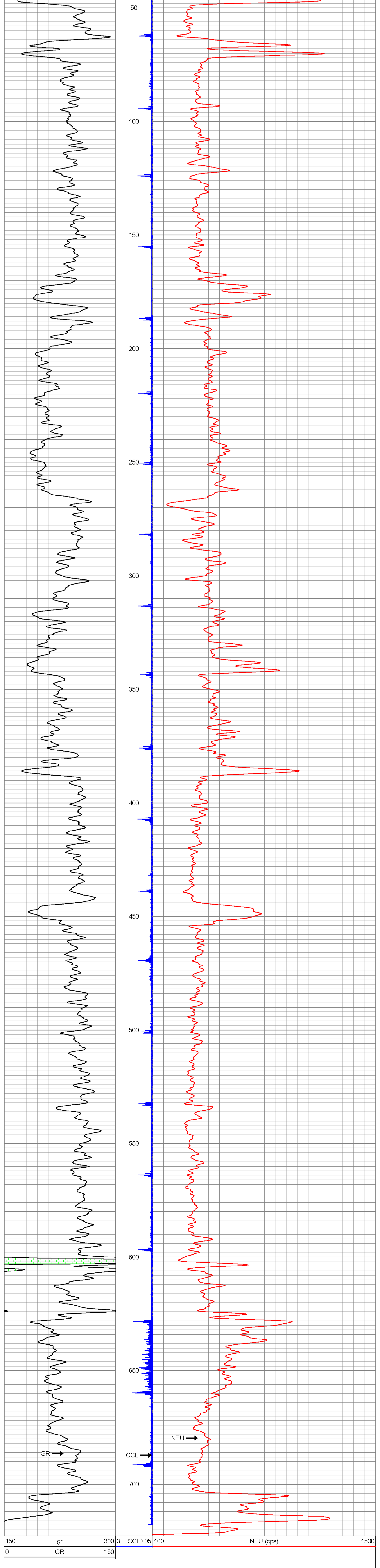
| Sensor  | Offset (ft) | Schematic | Description   | Len (ft) | OD (in) | Wt (lb) |
|---------|-------------|-----------|---|----------|---------|---------|
| TEMP    | 17.12       |           |   |          |         |         |
| WVF3FT  | 15.03       |           | CBLTEKCO-168 1x2 w Temp (Del) (010)<br>Tekco 400 Deg F 1 11/16" Dual Receiver with Temp | 9.75     | 1.69    | 50.00   |
| WVF5FT  | 14.03       |           |   |          |         |         |
| WVFTEMP | 10.62       |           |   |          |         |         |
| WVFSYNC | 10.62       |           |   |          |         |         |
| GR      | 7.29        |           | GR-TITAN 169 (TIT169_001)<br>Titan 1 11/16" Gamma Ray                                   | 4.75     | 1.69    | 20.00   |
| CCL     | 4.73        |           | CCL-TITAN (TITN)<br>TITAN 1 11/16" CCL  | 1.53     | 1.69    | 8.00    |
| NEU     | 0.63        |           | NEU-TITAN (TIT801)<br>TITAN 1 11/16" Neutron  | 4.33     | 1.69    | 25.00   |

Dataset: melander#45.db: field/well/run1/pass1  
Total Length: 20.37 ft  
Total Weight: 103.00 lb  
O.D.: 1.69 in

Database File: f:\southwinds energy, llc\melander #45\melander#45.db  
Dataset Pathname: pass1  
Presentation Format: scbl\_dr  
Dataset Creation: Tue Oct 30 09:15:09 2012 by Log Std Casehold 09061  
Charted by: Depth in Feet scaled 1:240



Database File: f:\southwinds energy, llc\melander #45\melander#45.db  
Dataset Pathname: pass1  
Presentation Format: gr-n-cl  
Dataset Creation: Tue Oct 30 09:15:09 2012 by Log Std Casehold 09061  
Charted by: Depth in Feet scaled 1:240



Database File: f:\southwinds energy, llc\melander #45\melander#45.db  
Dataset Pathname: pass1  
Presentation Format: gr-n-cl  
Dataset Creation: Tue Oct 30 09:15:09 2012 by Log Std Casehold 09061  
Charted by: Depth in Feet scaled 1:240