



Pioneer Energy Services

Sonic Cement
Bond Log

15-159-22720-00-00

Company American Warrior, Inc.

Well Buckley-Doll # 1-18

Field

County Rice

State Kansas

Location

2530' FNL & 807' FWL

Other Services

Sec: 18 Twp: 19S Rge: 9W

Elevation

Permament Datum Ground Level Elevation 1740

Log Measured From Kelly Bushing 8 Ft. Above Perm. Datum

Drilling Measured From Kelly Bushing K.B. 1748
D.F. 1748
G.L. 1740

Run Number One

Date Survey 1/17/2013

Date Cementing 1/10/2013

Type Cementing Operation Primary

Depth Driller 3384

Depth Logger 3354

Logged Interval 3353 to 2200

Casing Driller 5.5 @ TD @

Float Collar -- D.V. Tool |||||

Squeeze Depth |||||

Amount & Type Cement |||||

Amount & Type Admix |||||

Type Fluid In Hole Water

Fluid Level Full

Salinity PPM CL |||||

Weight lb/gal -- Vis. |||||

Approx. Logged Cement Top 2308

Calculated Cement Top

Max. Hole Temperature 112

Tool No. RBT 71

Spacing Recorded 3-5

Equipment -- Location 71 Hays

Recorded By John Vaughn

Witnessed By Kevin Willes

<<< Fold Here >>>

All interpretations are opinions based on inferences from electrical or other measurements and we cannot and do not guarantee the accuracy or correctness of any interpretation, and we shall not, except in the case of gross or willful negligence on our part, be liable or responsible for any loss, costs, damages, or expenses incurred or sustained by anyone resulting from any interpretation made by any of our officers, agents or employees. These interpretations are also subject to our general terms and conditions set out in our current Price Schedule.

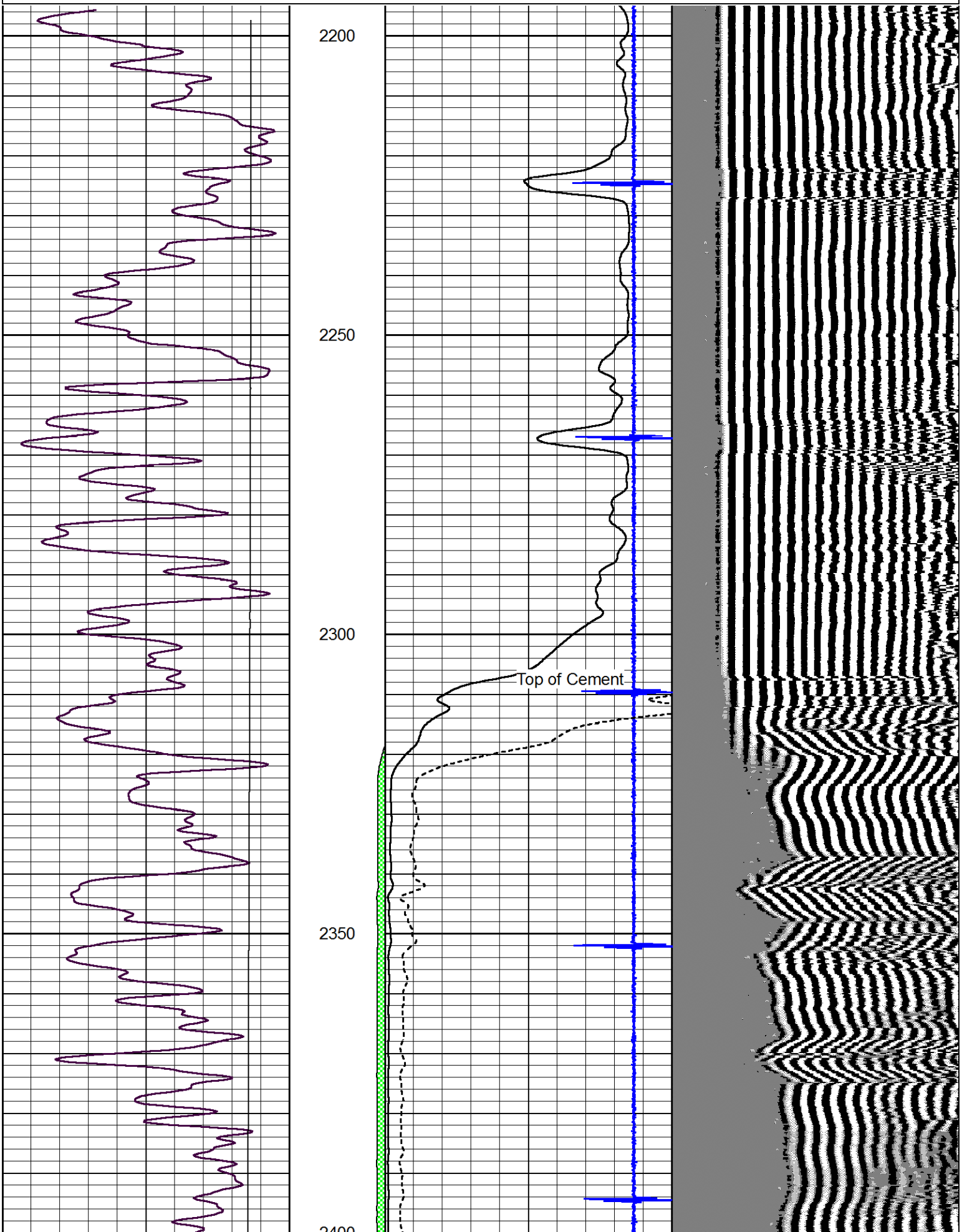
Comments

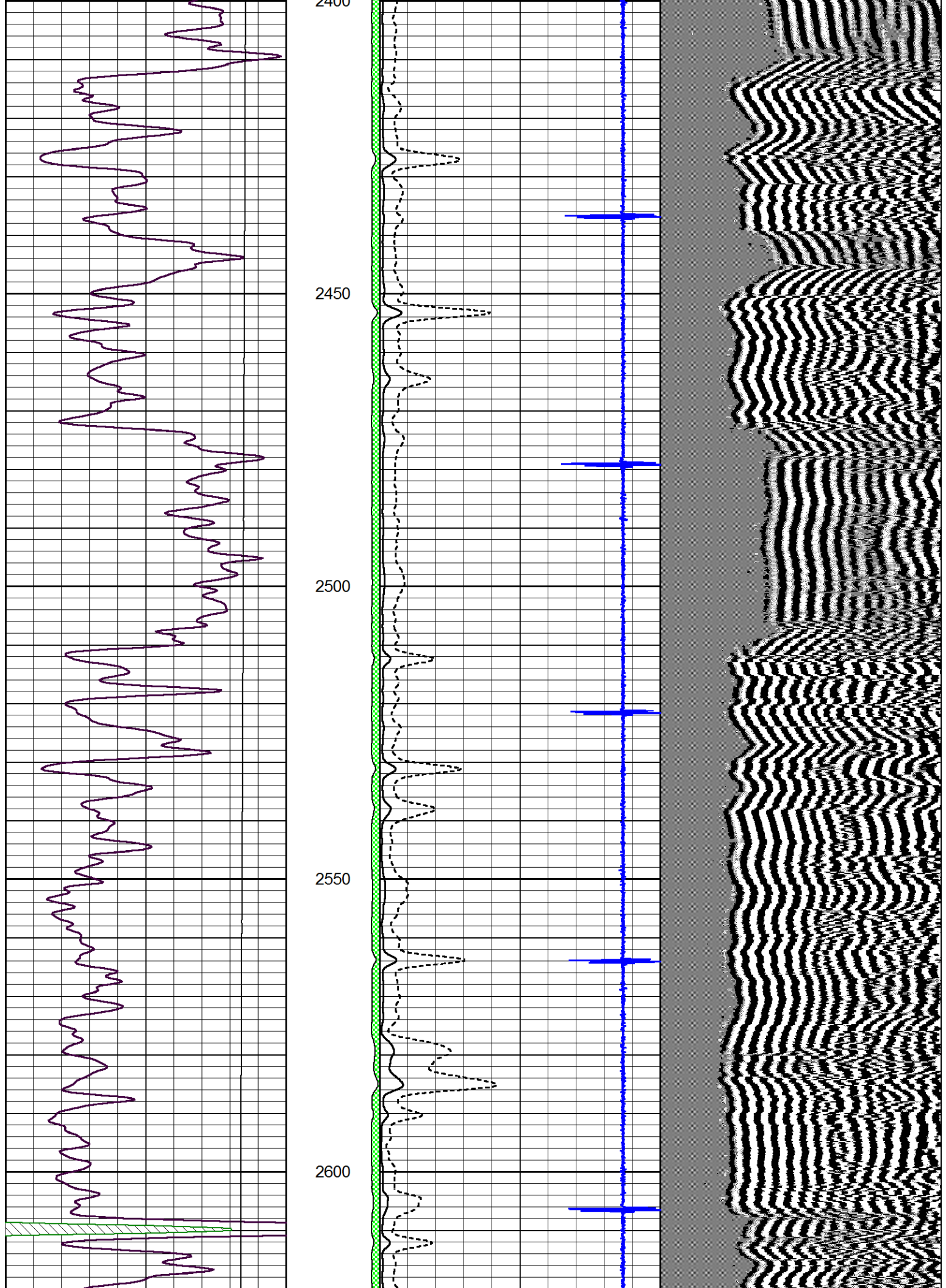
Thank you for using Pioneer Energy Services
(785) 625-3858

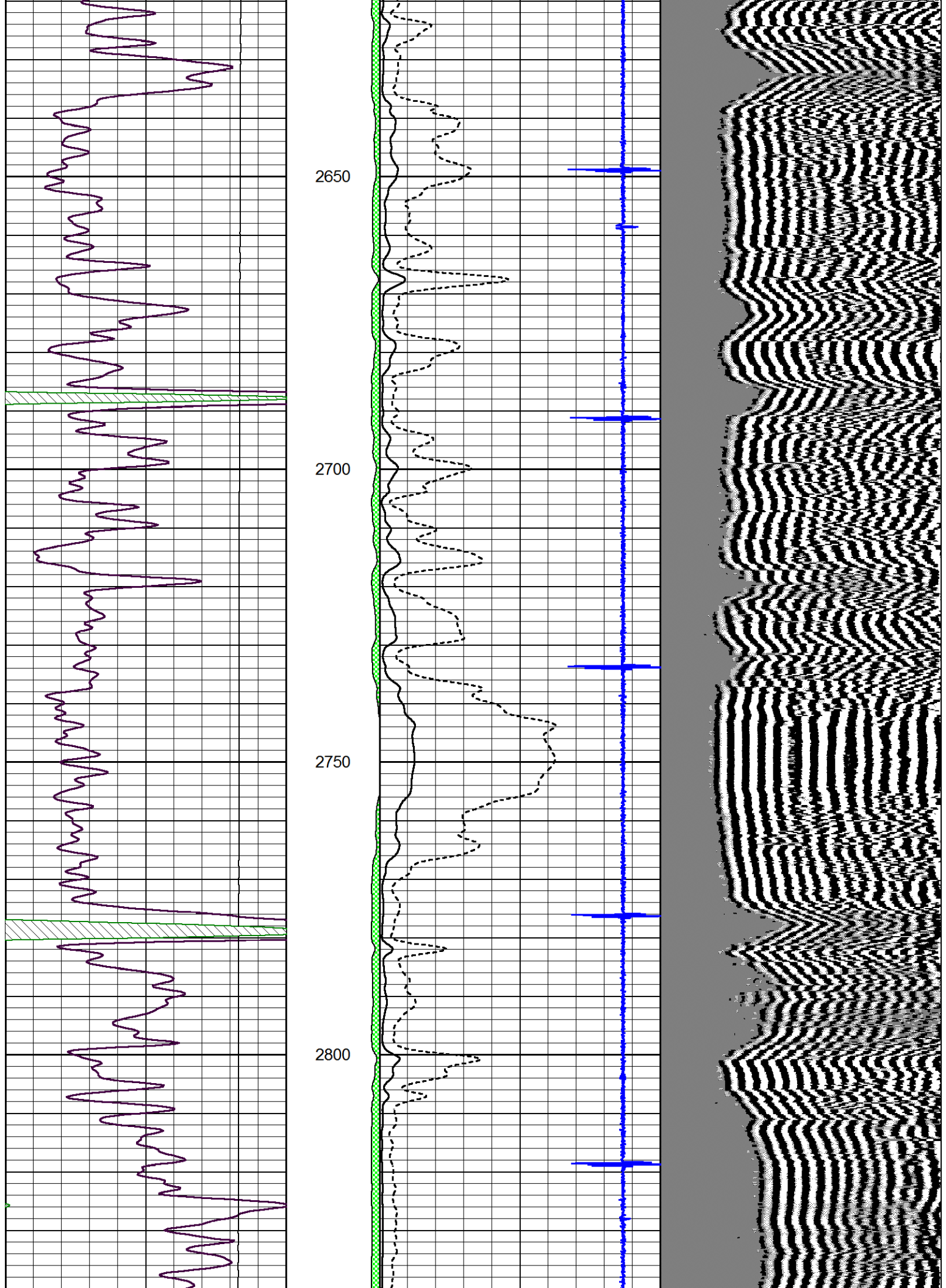
Chase
North to J Road, 1 West, 1/2 North,
East Into

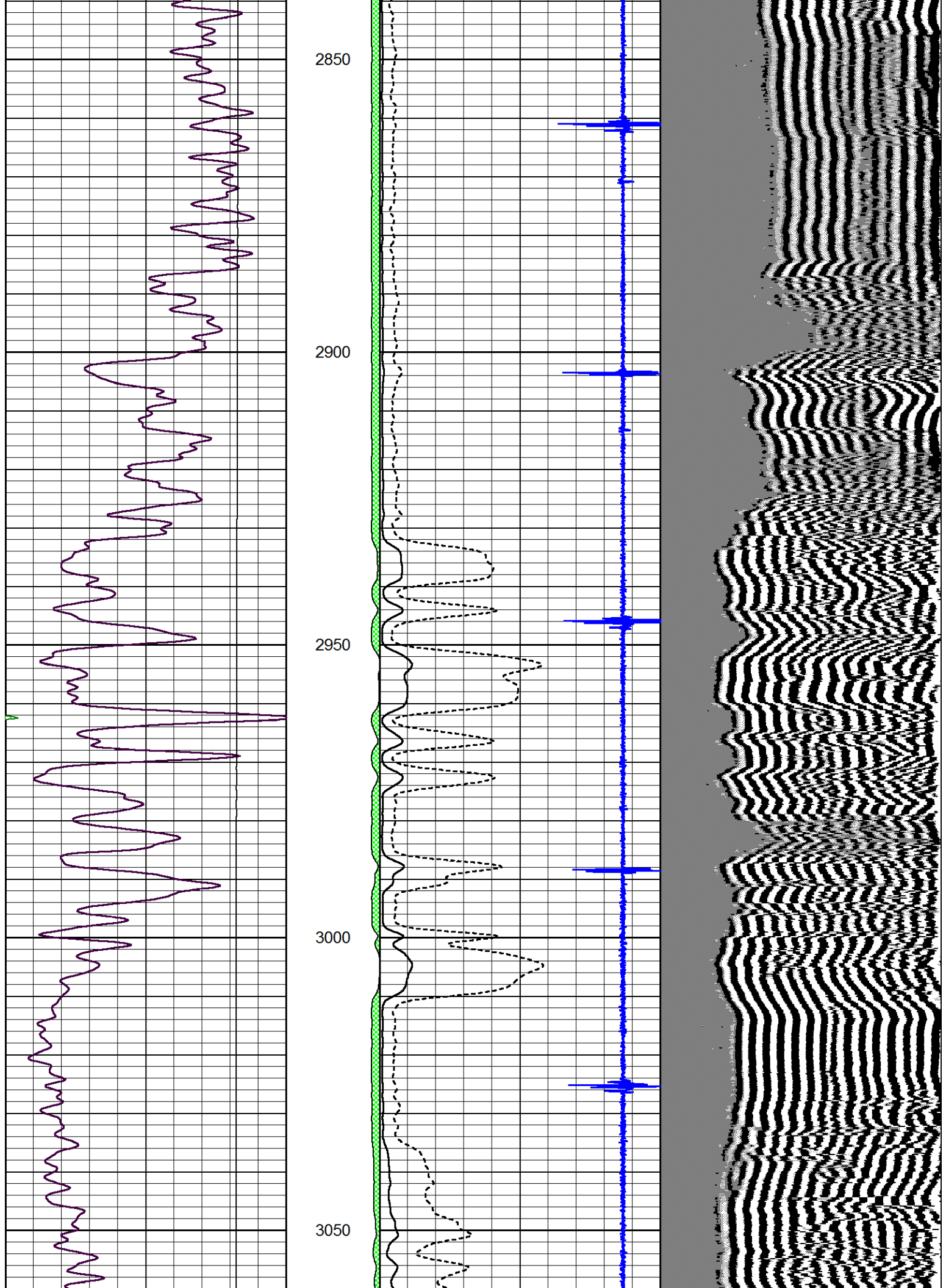
Database File: awi_buckley_1-18.db
Dataset Pathname: grcbl/pass3.4
Presentation Format: cblbr
Dataset Creation: Thu Jan 17 13:39:52 2013
Charted by: Depth in Feet scaled 1:240

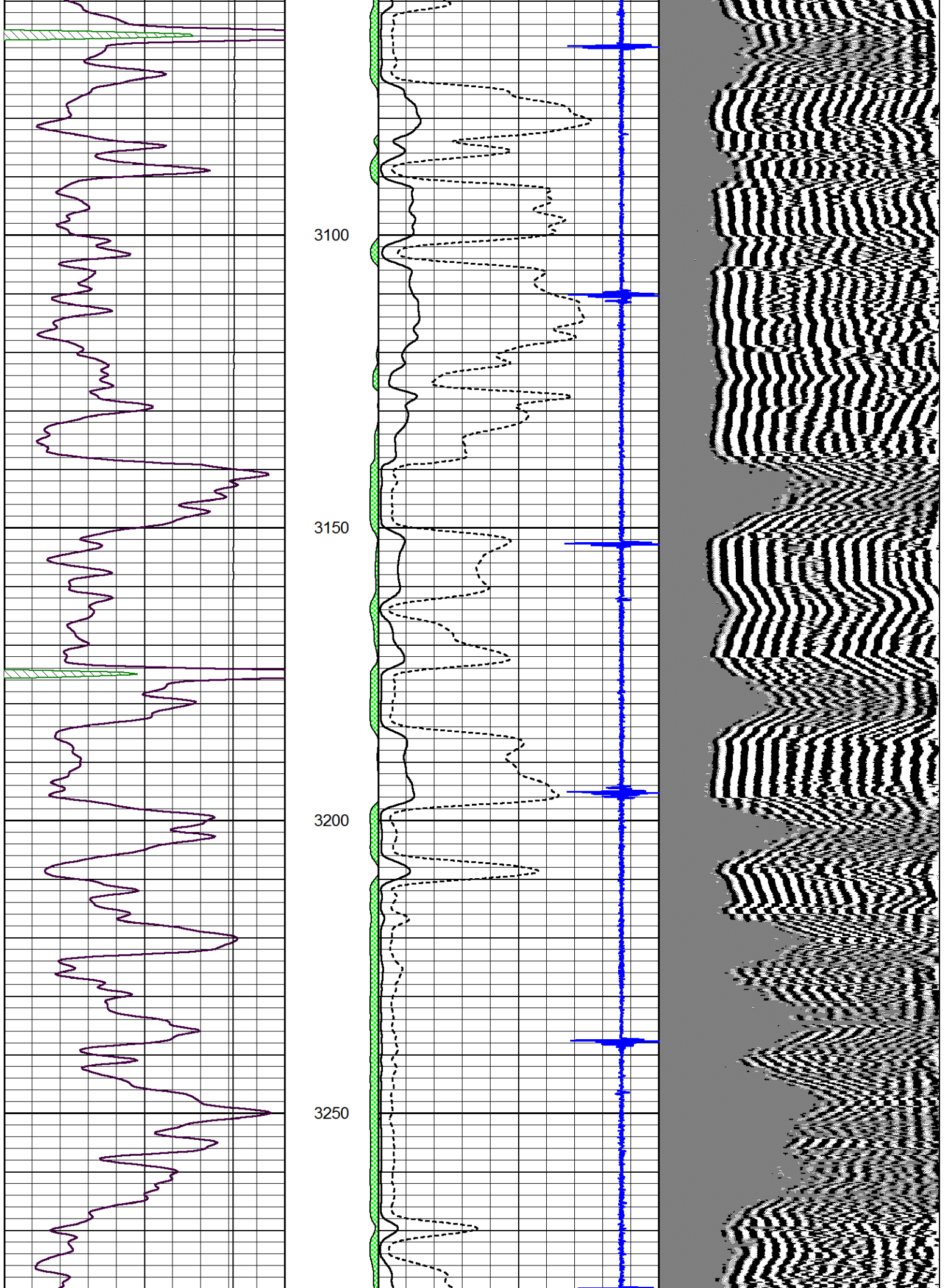
0	Gamma Ray	150	amp3ft	4	Casing Collars	-0.6	200	wvf5ft	1200
			(mV)	0	Amplified Amplitude (mV)	100			
			-100	10	Pipe Amplitude (mV)	20			

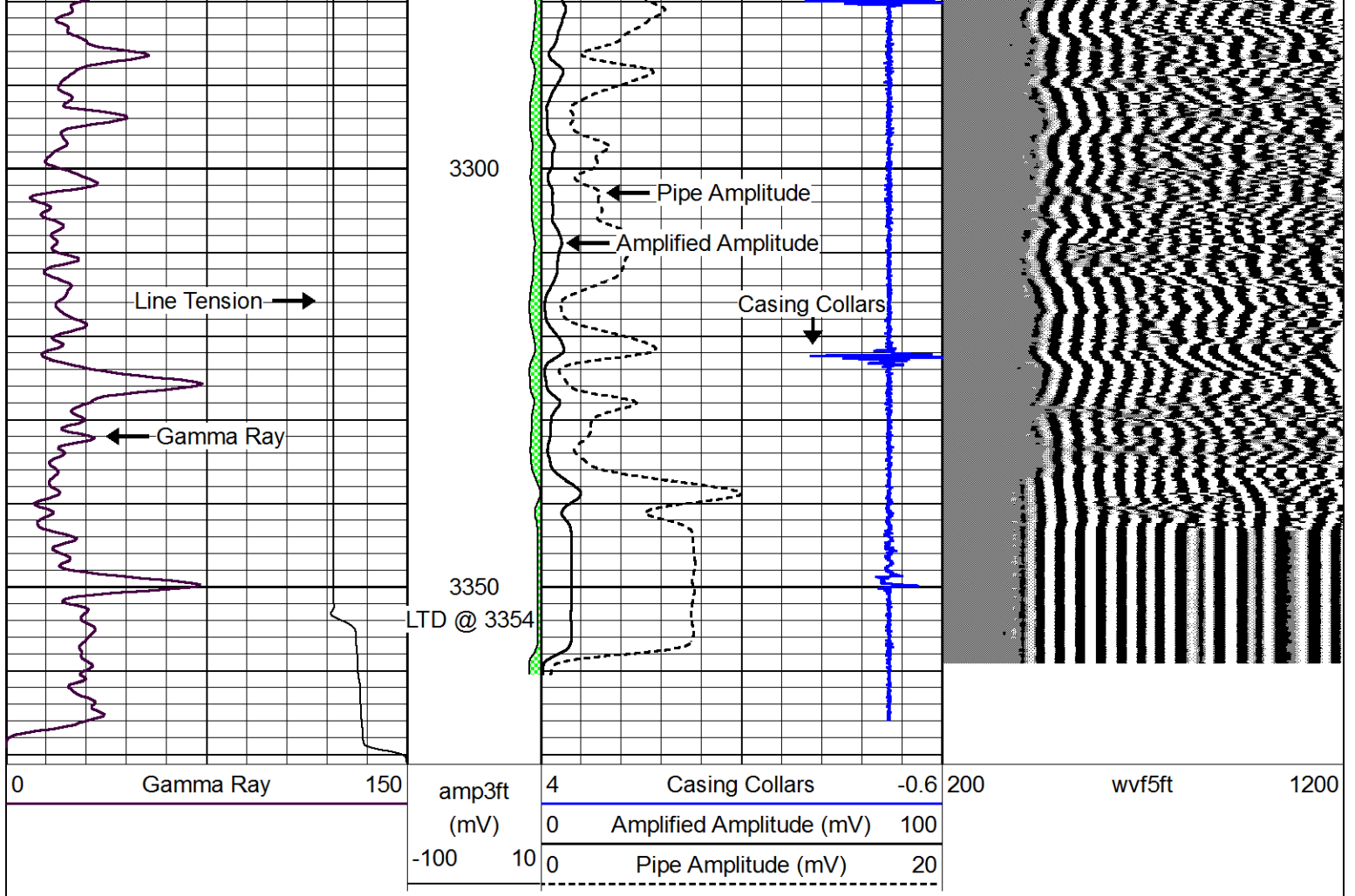








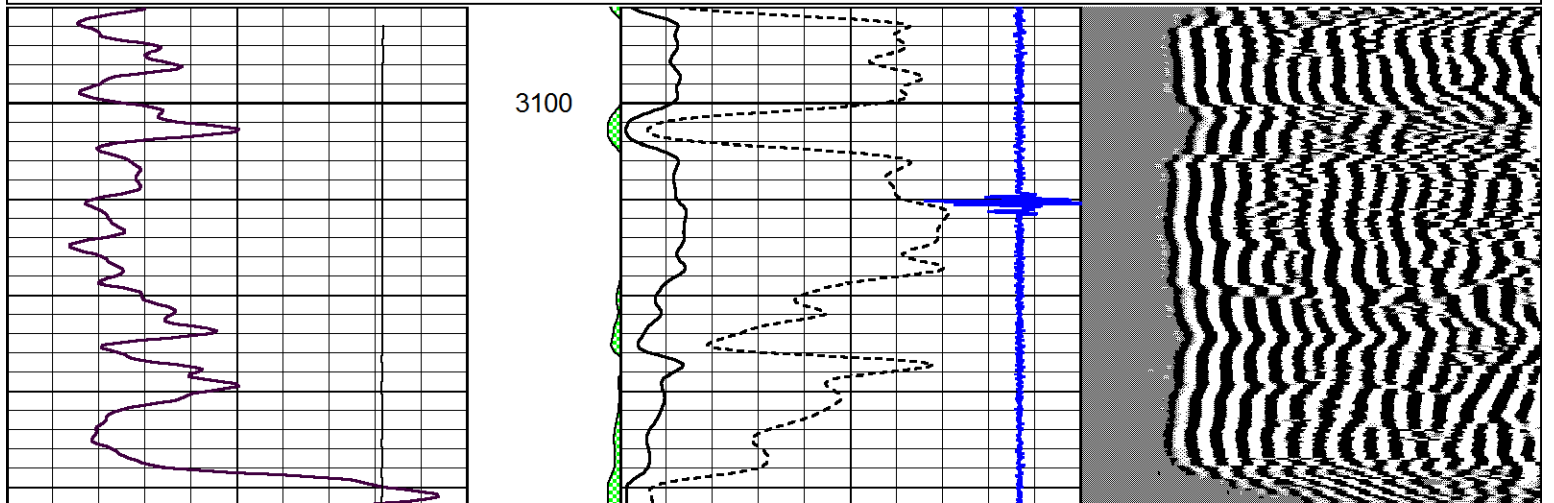
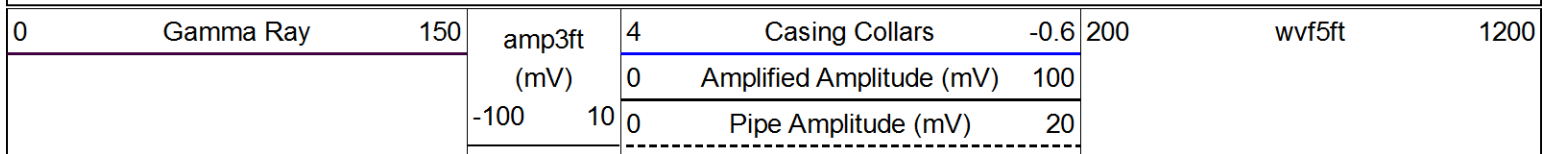


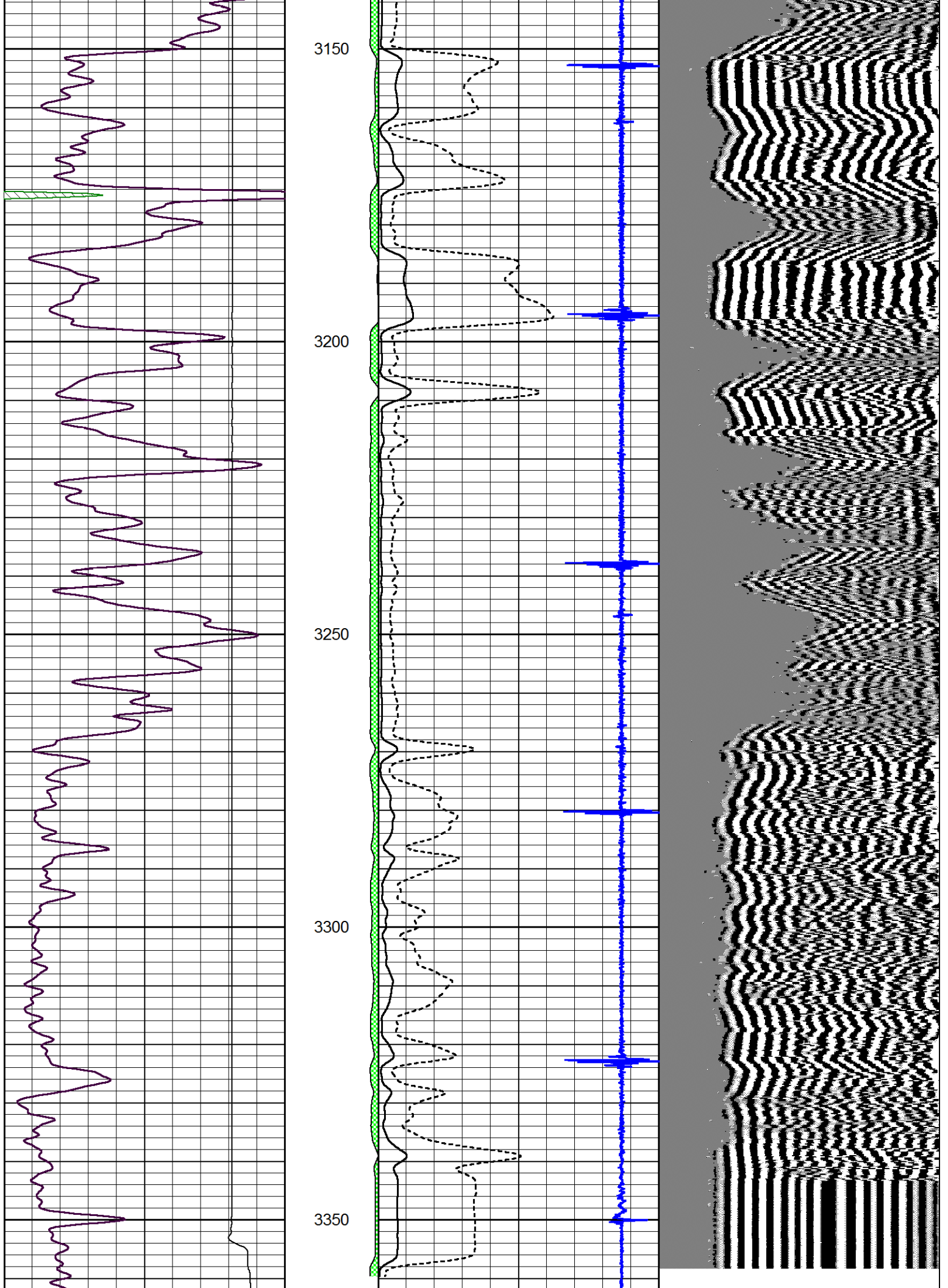


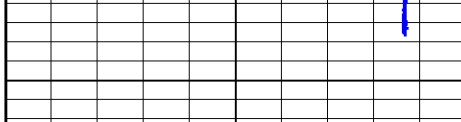
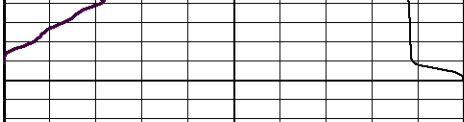
Pioneer Energy Services

Repeat Section

Database File: awi_buckley_1-18.db
 Dataset Pathname: grcbi/pass2
 Presentation Format: cbldr
 Dataset Creation: Thu Jan 17 12:45:46 2013 by Log SCH 111116
 Charted by: Depth in Feet scaled 1:240







0	Gamma Ray	150
---	-----------	-----

amp3ft (mV)
-100 10

4	Casing Collars	-0.6
0	Amplified Amplitude (mV)	100
0	Pipe Amplitude (mV)	20

200	wvf5ft	1200
-----	--------	------