



Pioneer Energy Services

Microresistivity Log

15-159-22720-00-00

API No.

Company **American Warrior, Inc.**

Well **Buckley-Doll # 1-18**

Field
County **Rice** State **Kansas**

Location **2530' FNL & 807' FWL**

Sec: **18** Twp: **19 S** Rge: **9 W**

Other Services
CNL/CDL
DIL

Permanent Datum Ground Level Elevation 1740
Log Measured From Kelly Bushing 8 Ft. Above Perm. Datum
Drilling Measured From Kelly Bushing

Elevation
K.B. 1748
D.F. 1740
G.L. 1740

Date	01/09/2013
Run Number	Two
Depth Driller	3384
Depth Logger	3366
Bottom Logged Interval	3365
Top Log Interval	2600
Casing Driller	8.625 @ 326
Casing Logger	318
Bit Size	8.625
Type Fluid in Hole	Chemical
Salinity, ppm CL	5700
Density / Viscosity	8.7 51
pH / Fluid Loss	11.5 7.1
Source of Sample	Flowline
Rm @ Meas. Temp	0.58 @ 58
Rmf @ Meas. Temp	0.44 @ 58
Rmc @ Meas. Temp	0.78 @ 58
Source of Rmf / Rmc	Charts
Rm @ BHT	0.30 @ 112
Operating Rig Time	4 Hours
Max Rec. Temp. F	112
Equipment Number	91
Location	Hays
Recorded By	D. Schmidt
Witnessed By	Jim Musgrove

<<< Fold Here >>>

All interpretations are opinions based on inferences from electrical or other measurements and we cannot and do not guarantee the accuracy or correctness of any interpretation, and we shall not, except in the case of gross or willful negligence on our part, be liable or responsible for any loss, costs, damages, or expenses incurred or sustained by anyone resulting from any interpretation made by any of our officers, agents or employees. These interpretations are also subject to our general terms and conditions set out in our current Price Schedule.

Comments

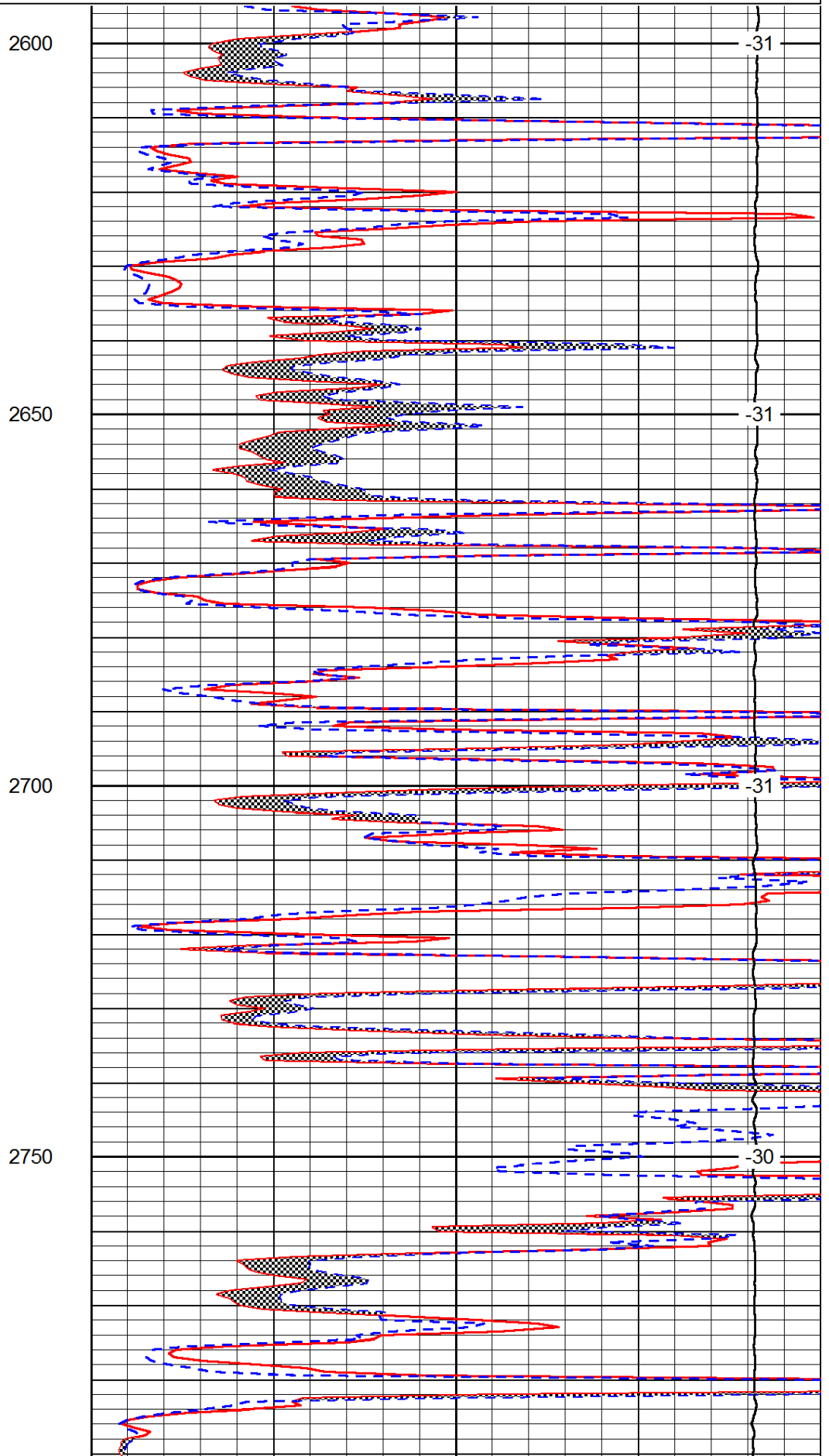
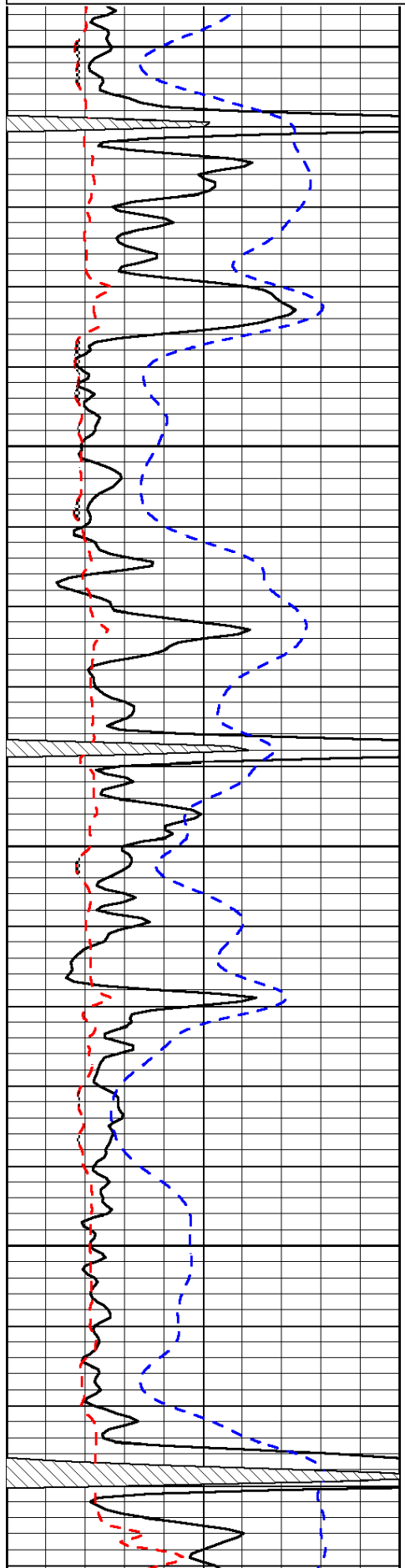
Thank you for using Pioneer Energy Services
www.pioneerenergy.com
 785 625 3858
 Chase,
 North to J Road, 1 West, 1/2 North,
 East Into

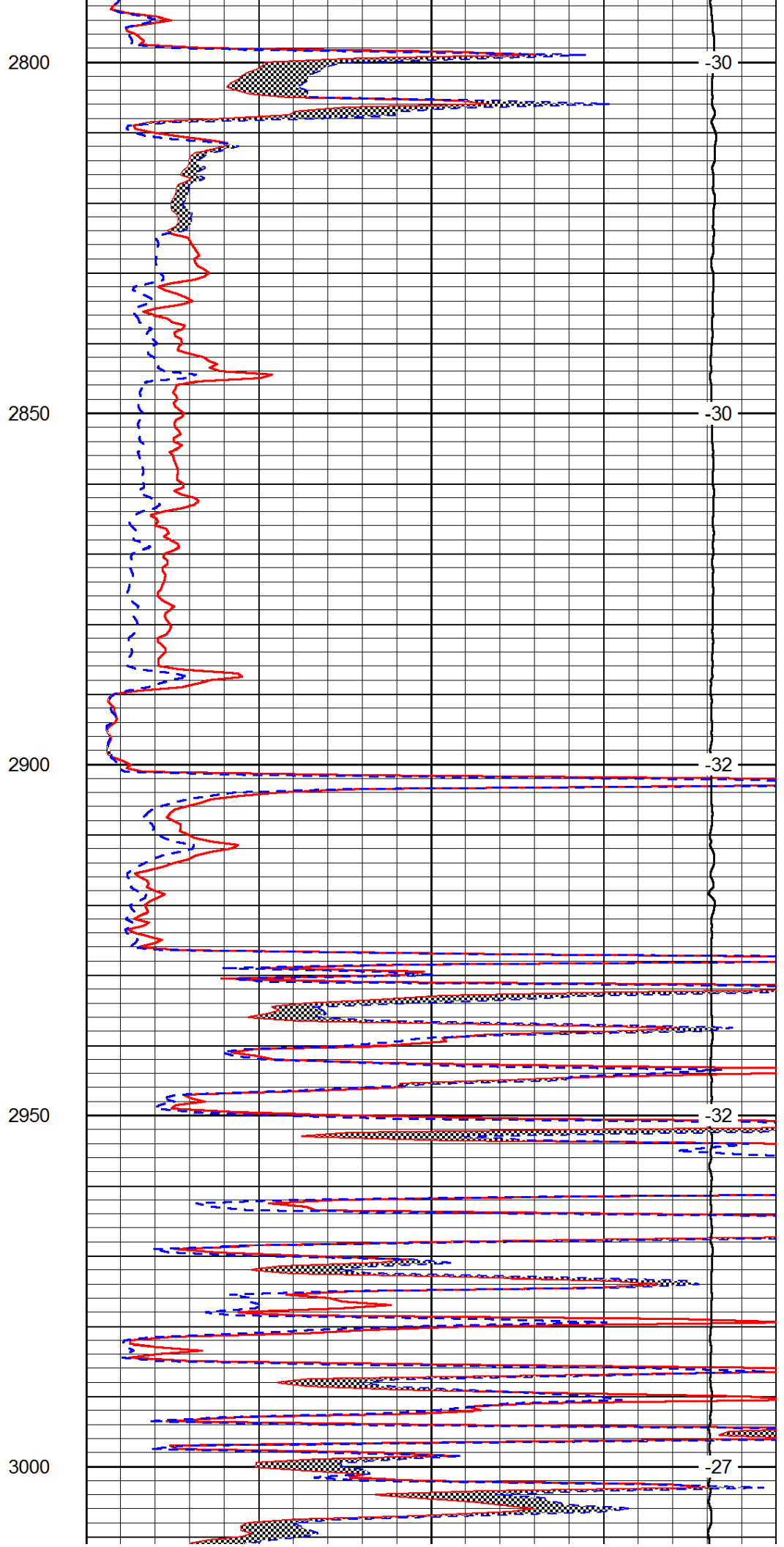
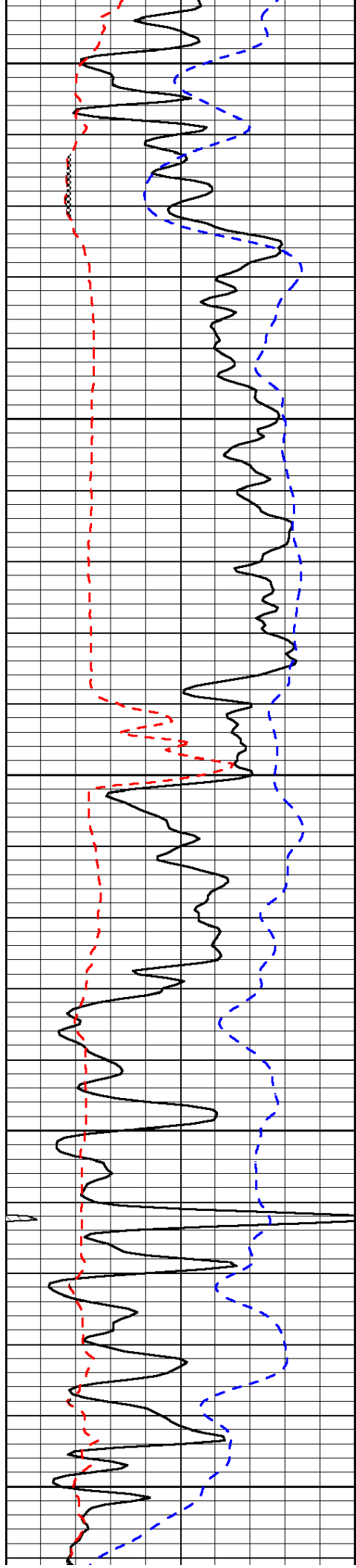
Database File: c:\warrior\data\amwar_buckley-doll # 1-18\amwar_010913hd.db
 Dataset Pathname: DIL\awstack
 Presentation Format: micro
 Dataset Creation: Wed Jan 09 19:08:13 2013
 Charted by: Depth in Feet scaled 1:240

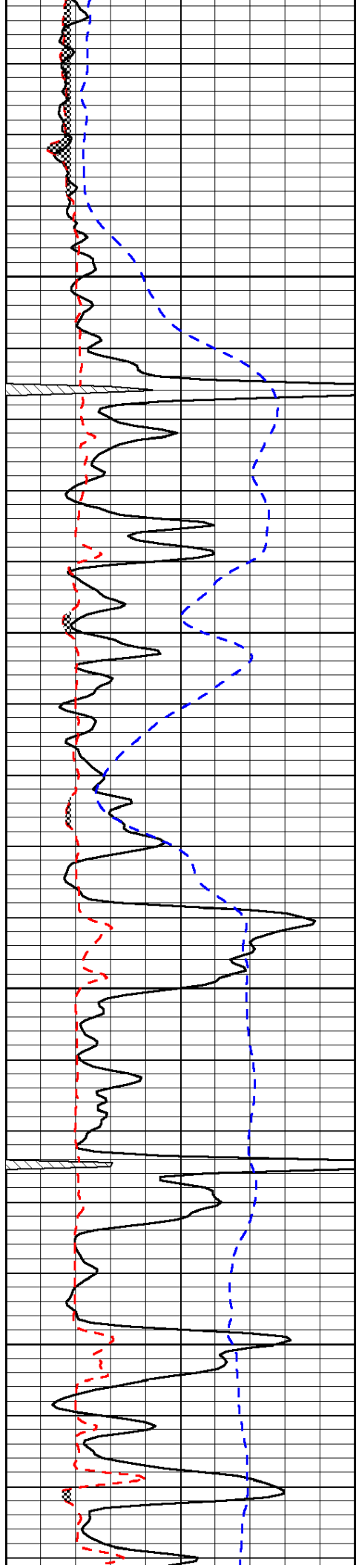
0	Gamma Ray	150
6	Micro Log Caliper (GAPI)	16
-200	SP (mV)	0

0	Micro Inverse 1 X 1	40
0	Micro Normal 2"	40
15000	Line Weight	0

LSPD





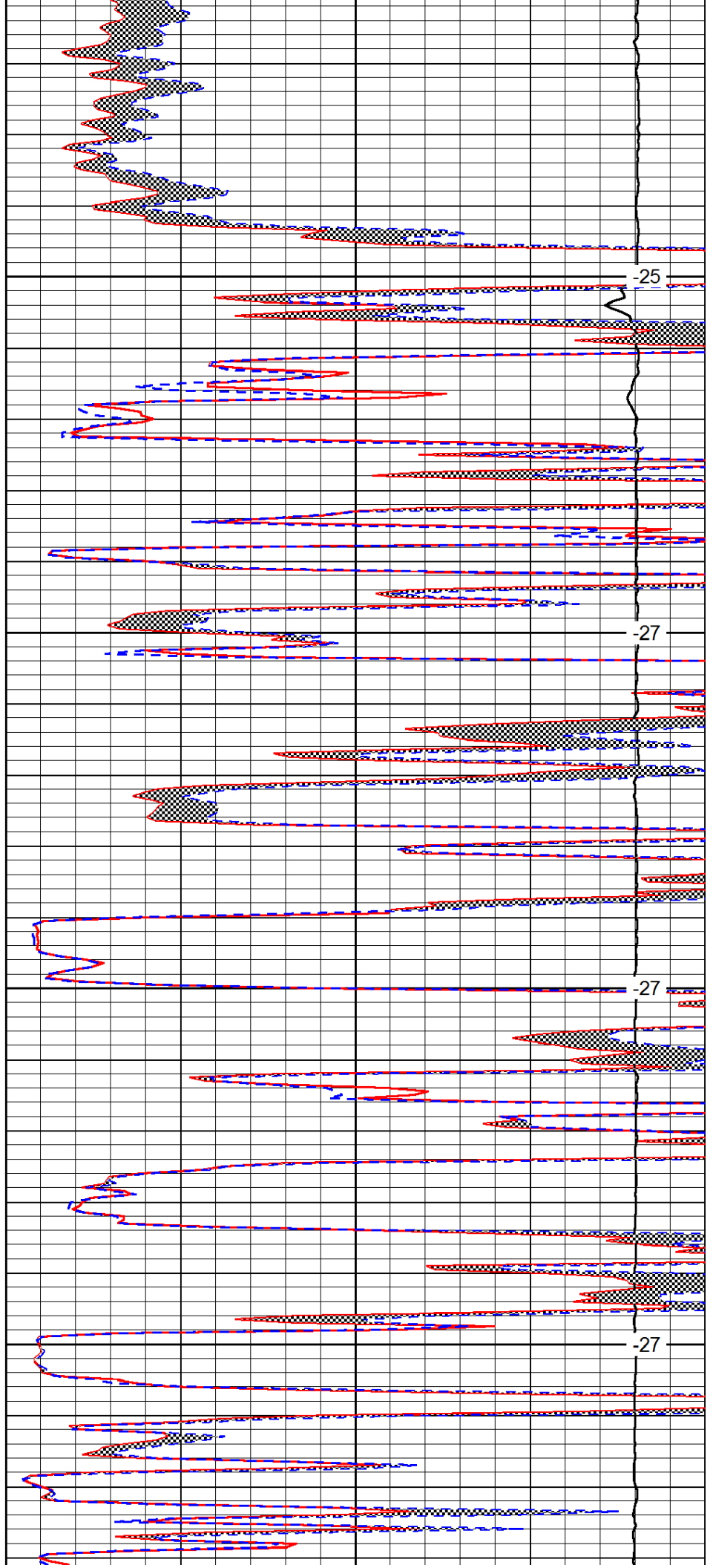


3050

3100

3150

3200

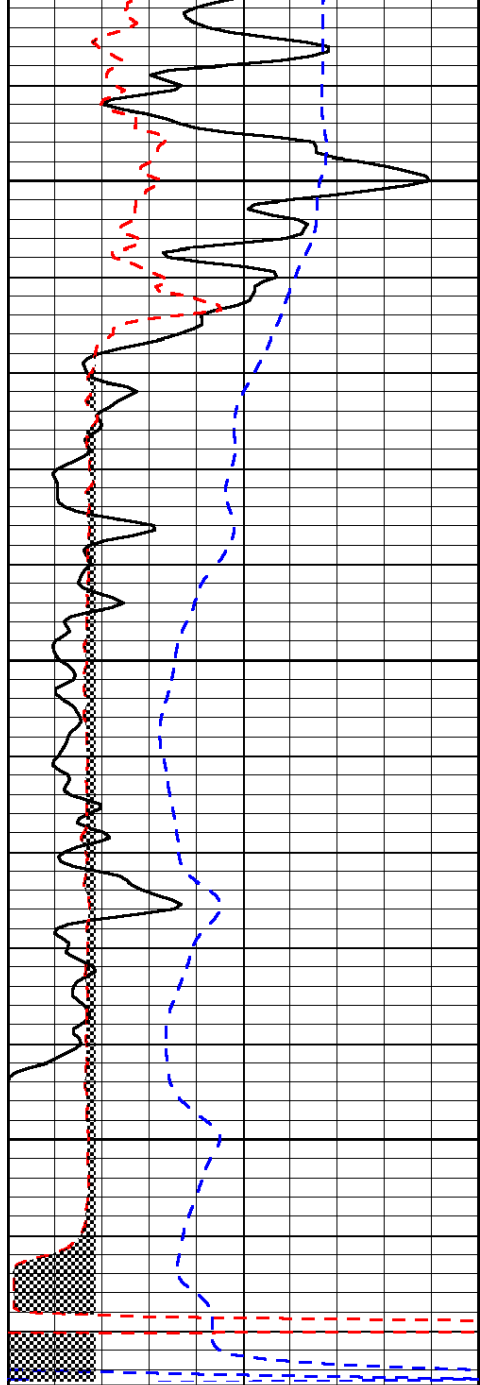


-25

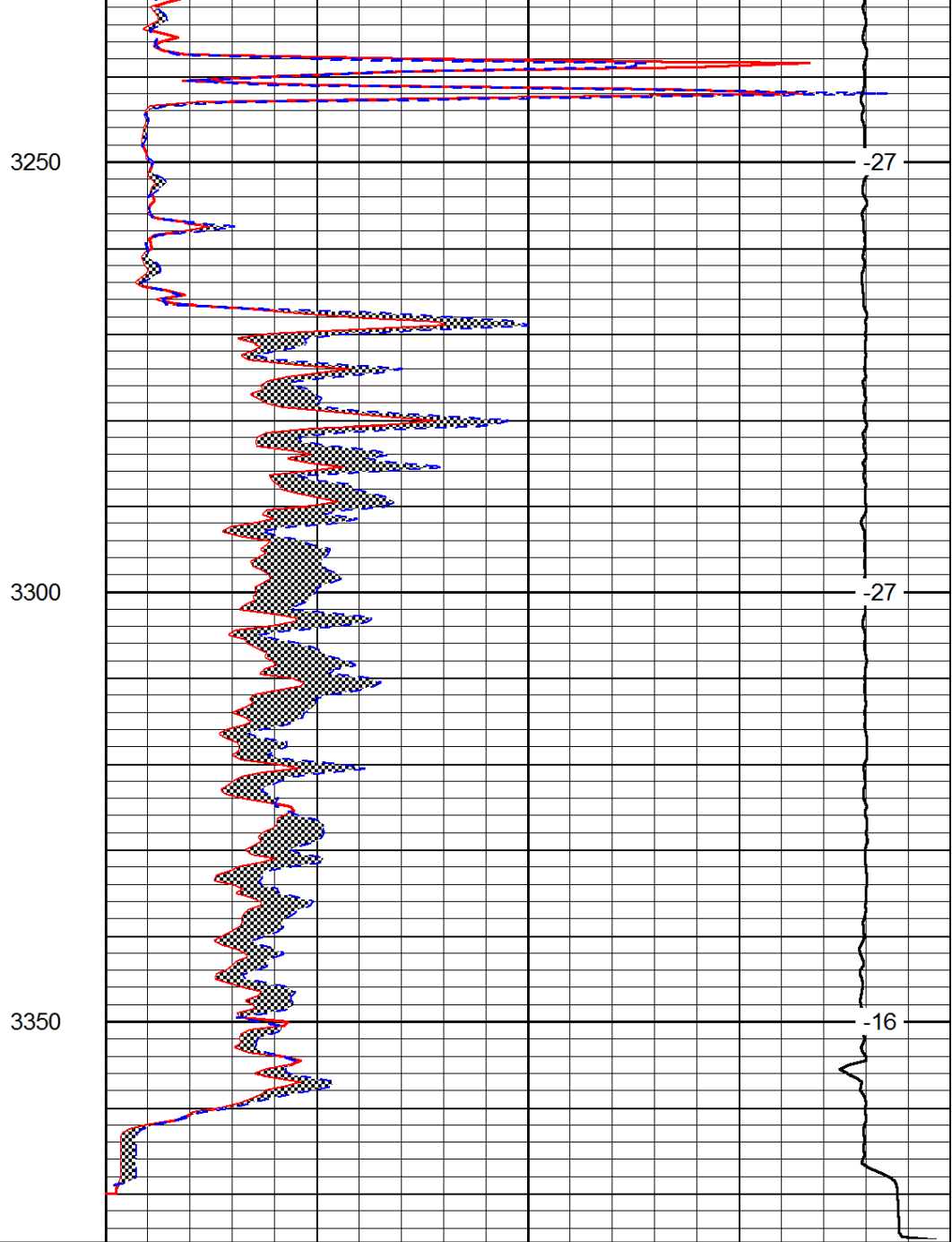
-27

-27

-27



0	Gamma Ray	150
6	Micro Log Caliper (GAPI)	16
-200	SP (mV)	0



0	Micro Inverse 1 X 1	40
0	Micro Normal 2''	40
15000	Line Weight	0

LSPD