



Pioneer Energy Services

Dual Induction Log

15-159-22720-00-00

API No.

Company **American Warrior, Inc.**

Well **Buckley-Doll # 1-18**

Field

County

Rice

State

Kansas

Location

2530' FNL & 807' FWL

Sec: **18**

Twp: **19 S**

Rge: **9 W**

Other Services
CNL/CDL
MEL

Permanent Datum **Ground Level**

Kelly Bushing

Elevation 1740

Log Measured From **Kelly Bushing**

8 Ft. Above Perm. Datum

Datum

K.B. 1748
D.F. 1740
G.L. 1740

Date

01/09/2013

Run Number

One

Depth Driller

3384

Depth Logger

3366

Bottom Logged Interval

3365

Top Log Interval

300

Casing Driller

8.625 @ 326

Casing Logger

318

Bit Size

8.625

Type Fluid in Hole

Chemical

Salinity,ppm CL

5700

Density / Viscosity

8.7 51

pH / Fluid Loss

11.5 7.1

Source of Sample

Flowline

Rm @ Meas. Temp

0.58 @ 58

Rmf @ Meas. Temp

0.44 @ 58

Rmc @ Meas. Temp

0.78 @ 58

Source of Rmf / Rmc

Charts

Rm @ BHT

0.30 @ 112

Operating Rig Time

4 Hours

Max Rec. Temp. F

112

Equipment Number

91

Location

Hays

Recorded By

D. Schmidt

Witnessed By

Jim Musgrove

<<< Fold Here >>>

All interpretations are opinions based on inferences from electrical or other measurements and we cannot and do not guarantee the accuracy or correctness of any interpretation, and we shall not, except in the case of gross or willful negligence on our part, be liable or responsible for any loss, costs, damages, or expenses incurred or sustained by anyone resulting from any interpretation made by any of our officers, agents or employees. These interpretations are also subject to our general terms and conditions set out in our current Price Schedule.

Comments

Thank you for using Pioneer Energy Services
www.pioneerenergy.com
 785 625 3858
 Chase,
 North to J Road, 1 West, 1/2 North,
 East Into

Database File: c:\warrior\data\amwar_buckley-doll # 1-18\amwar_010913hd.db
 Dataset Pathname: DIL\awstack
 Presentation Format: dil2in
 Dataset Creation: Wed Jan 09 19:08:13 2013
 Charted by: Depth in Feet scaled 1:600

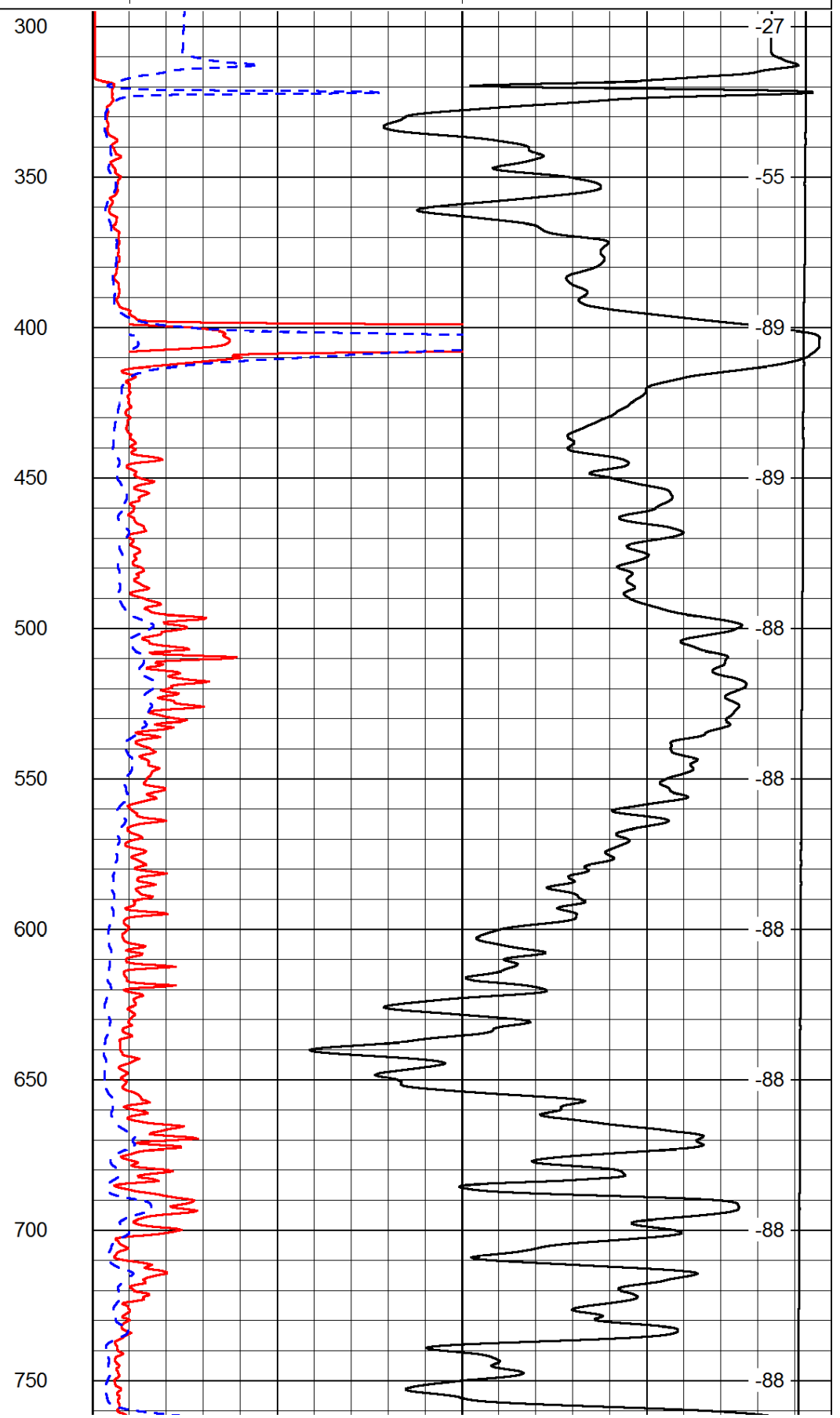
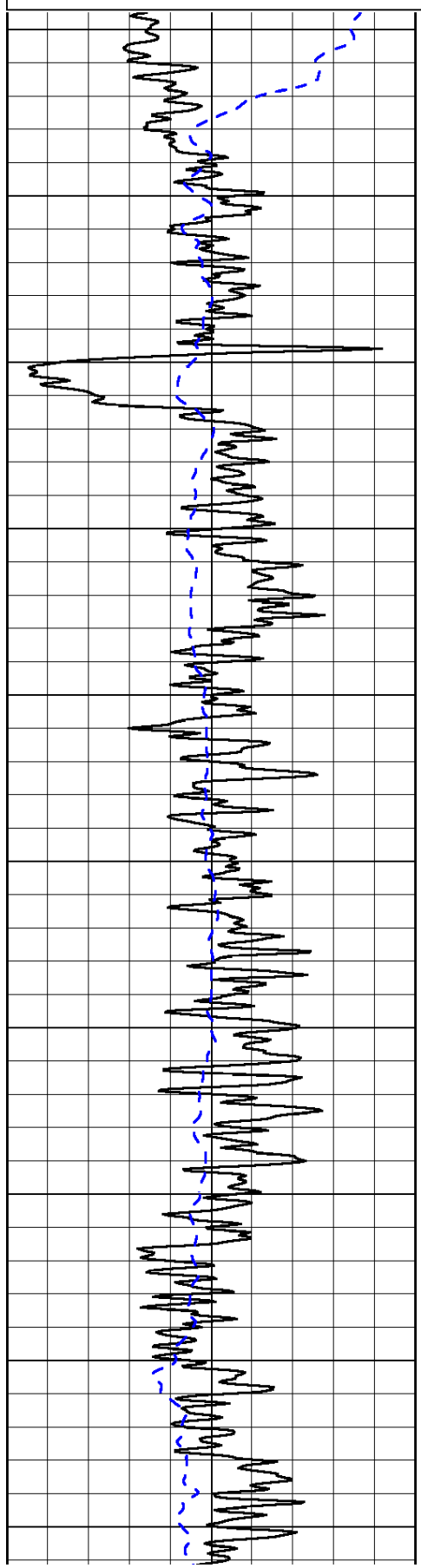
0	Gamma Ray	150
-200	SP (mV)	0

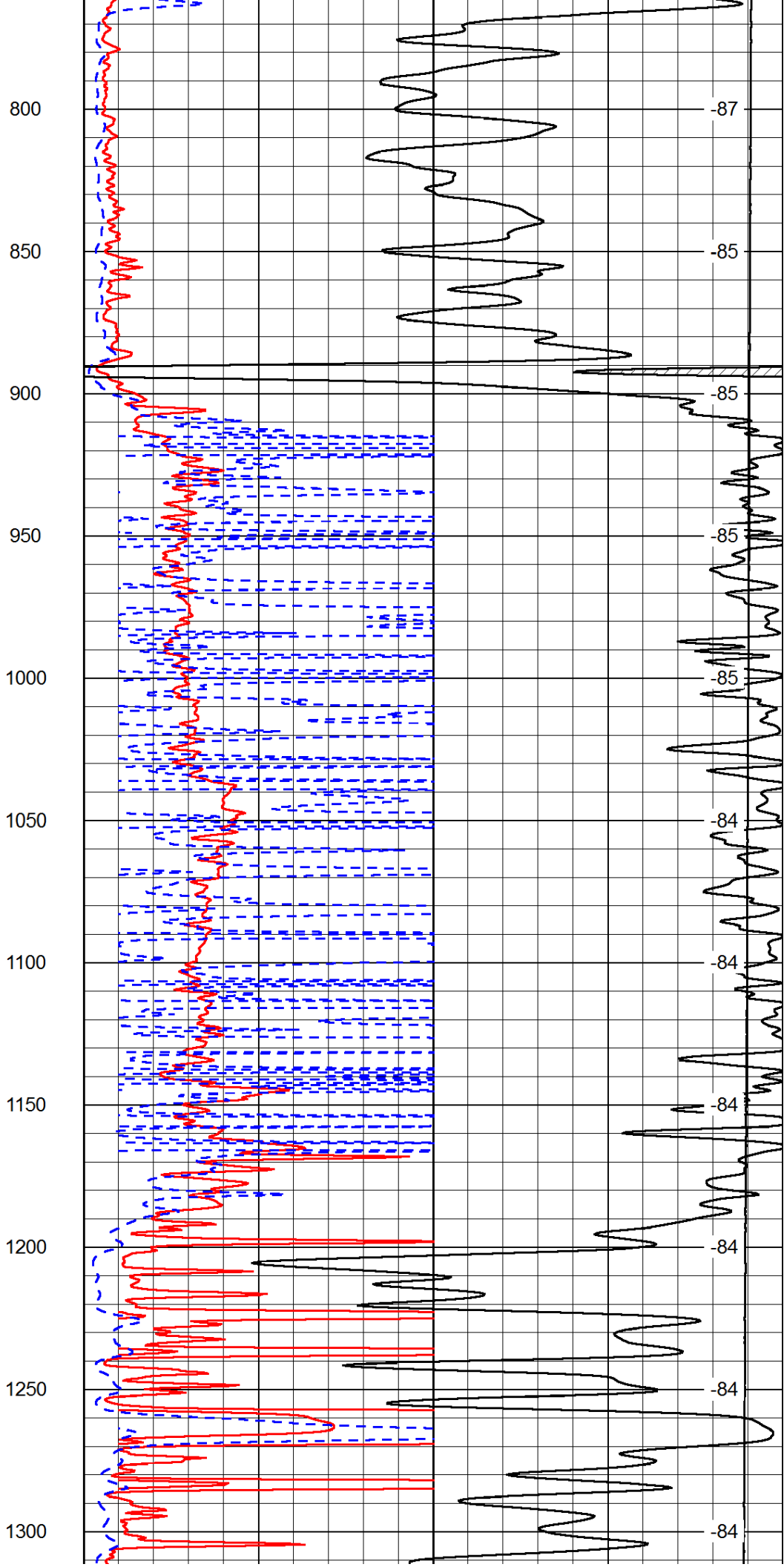
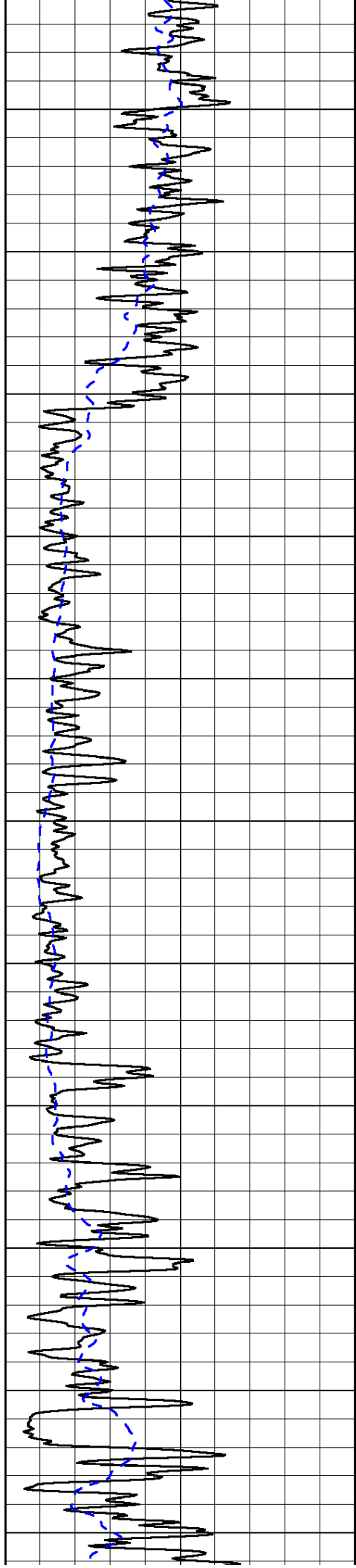
0	Shallow Resistivity	50
0	Deep Resistivity	50

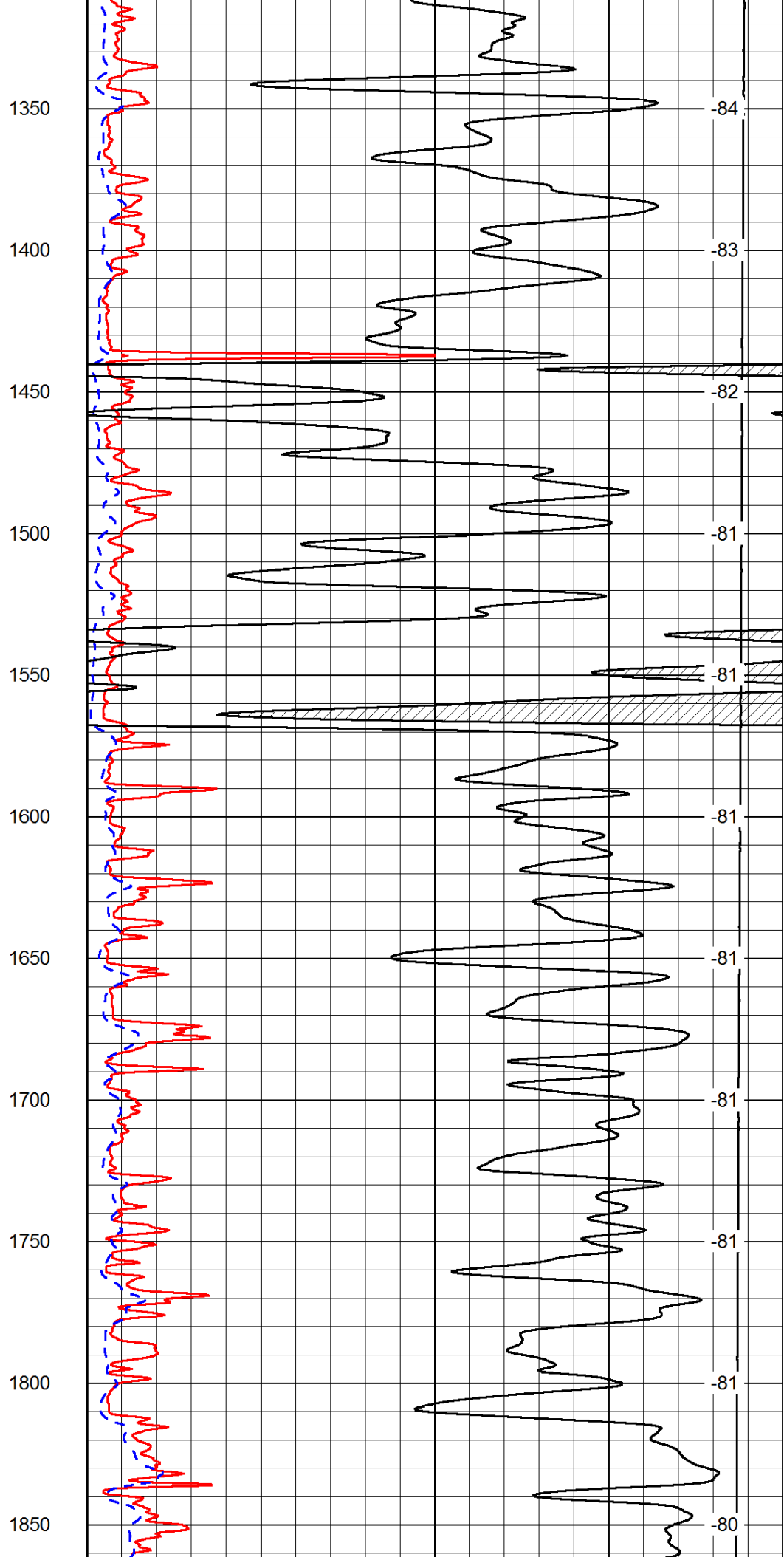
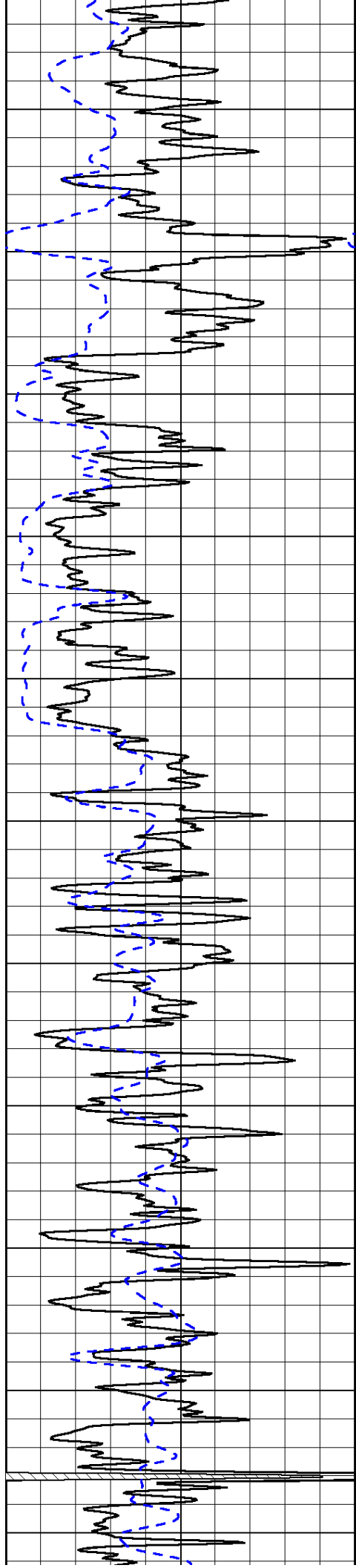
LSPD

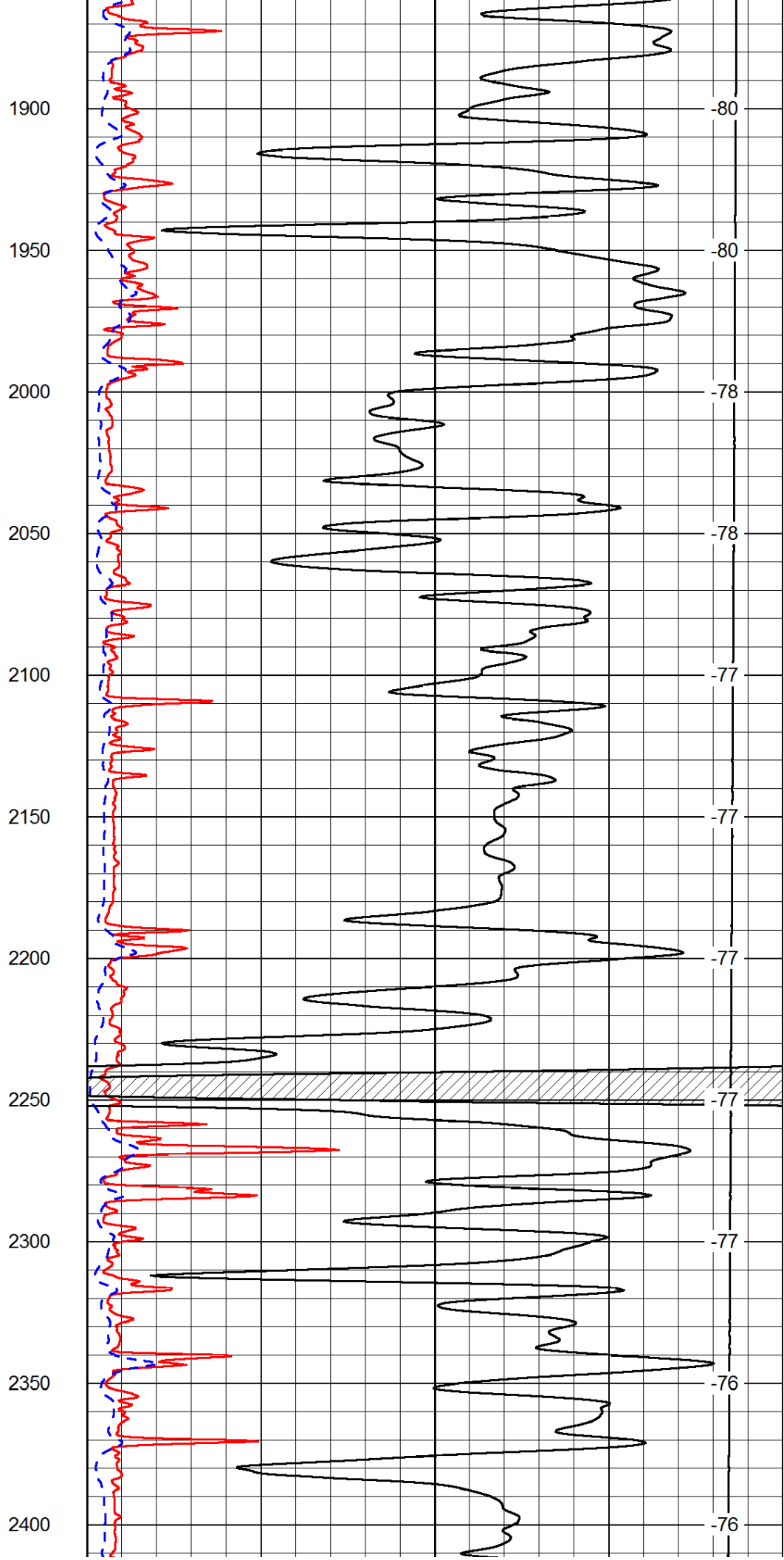
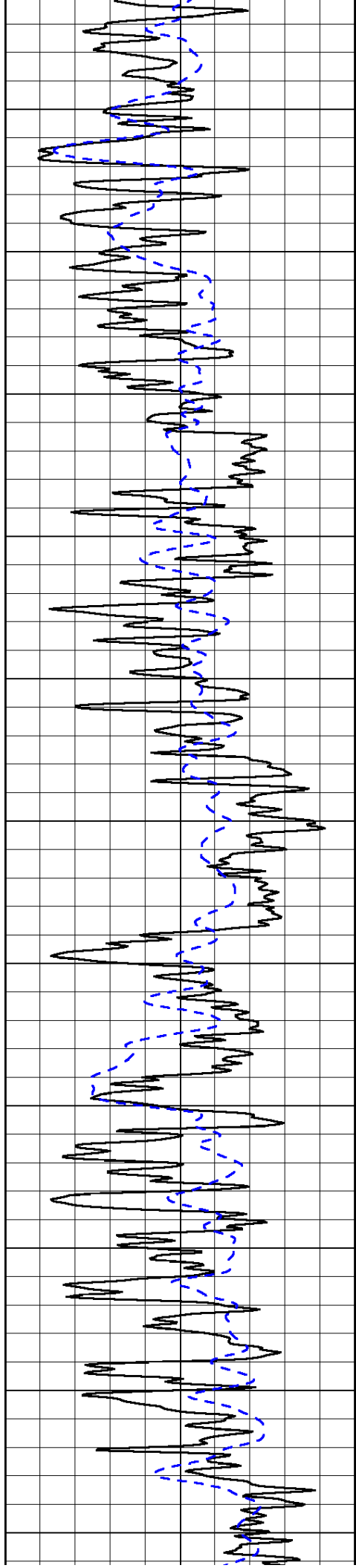
1000	Conductivity	0
15000	Line Tension	0

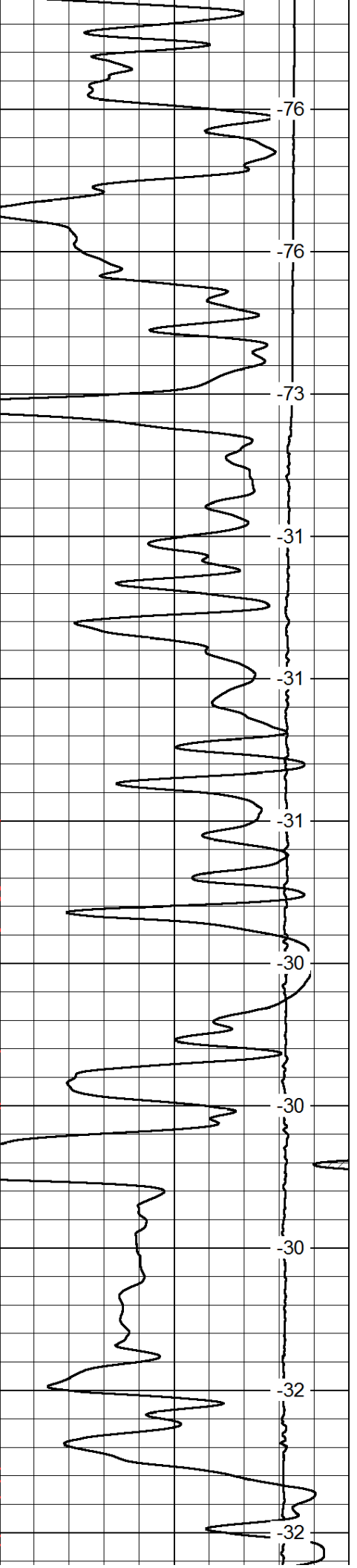
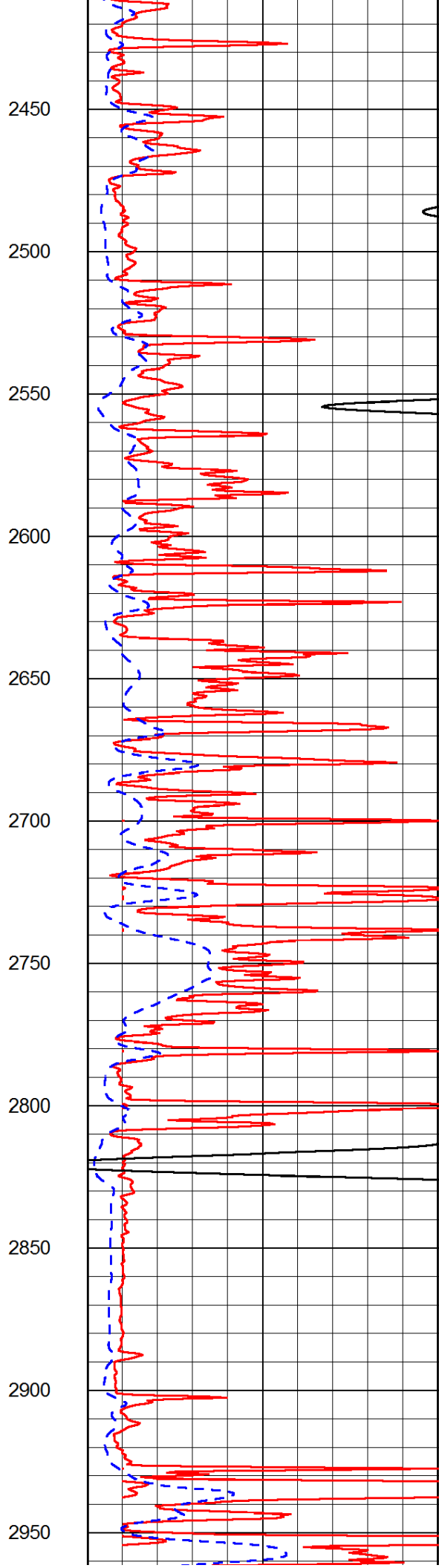
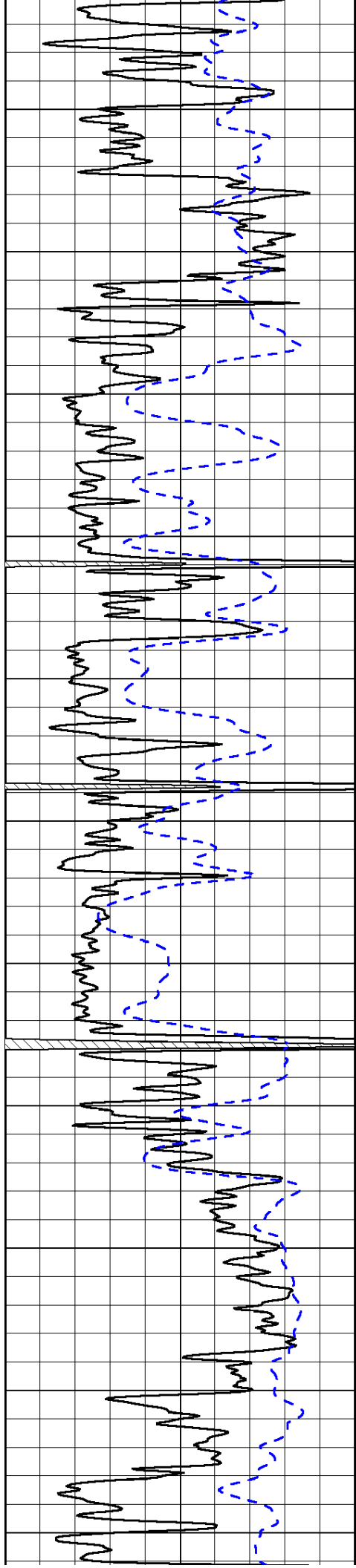
50	Shallow Resistivity	500
50	Deep Resistivity	500

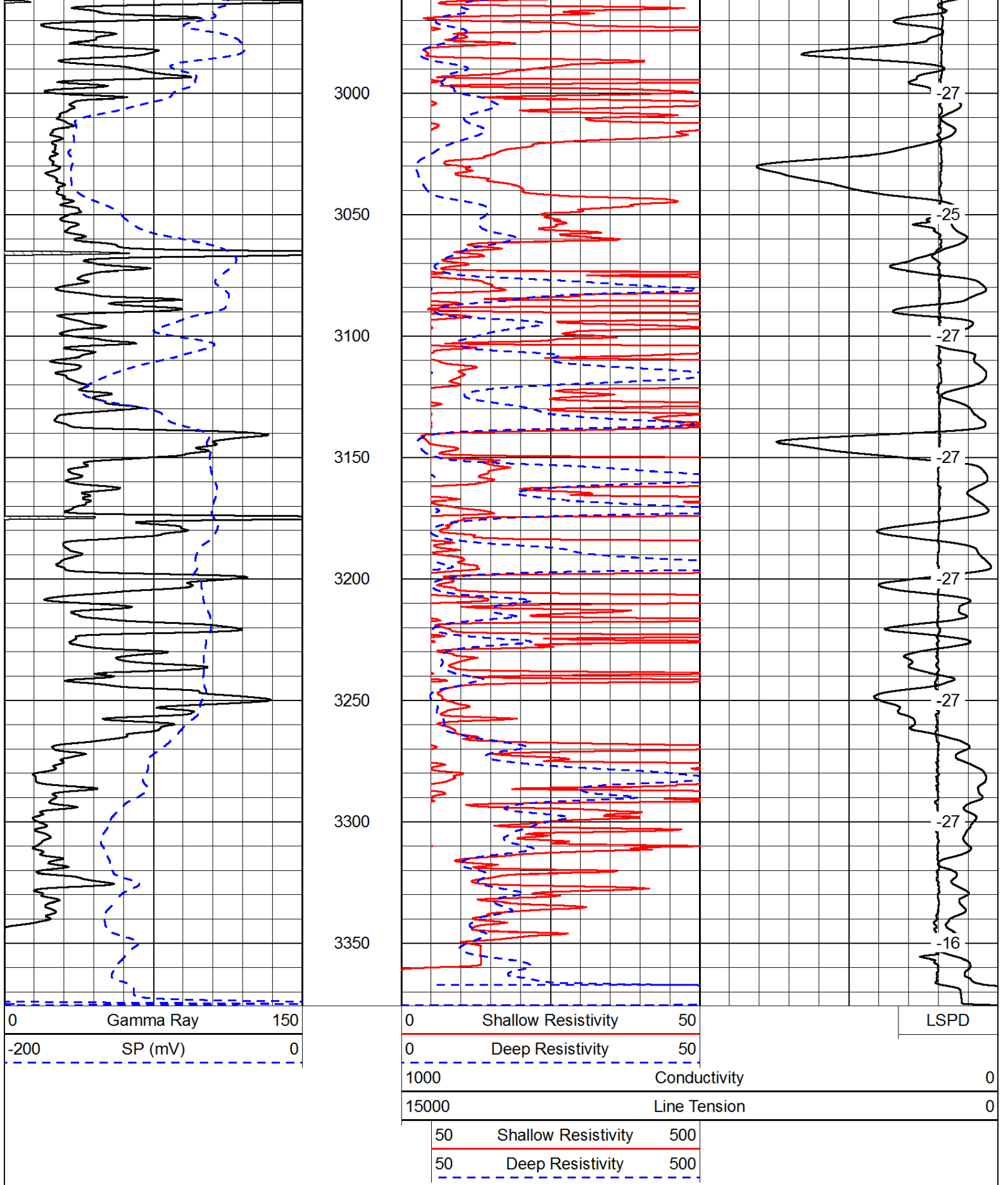










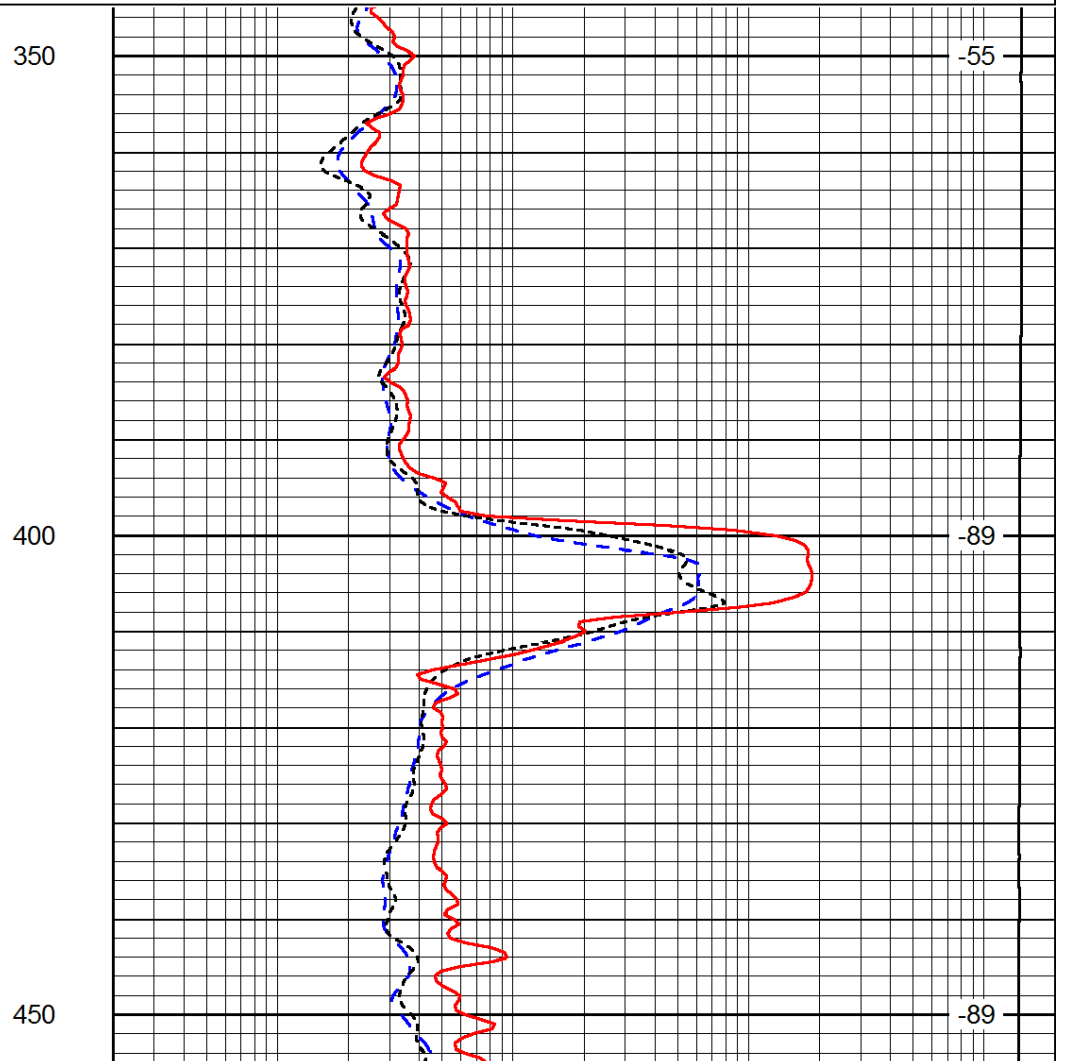


Database File: c:\warrior\data\amwar_buckley-doll # 1-18\amwar_010913hd.db
 Dataset Pathname: DIL/awstack
 Presentation Format: dil
 Dataset Creation: Wed Jan 09 19:08:13 2013
 Charted by: Depth in Feet scaled 1:240

0	Gamma Ray	150
-200	SP (mV)	0
-160	RxoRt	40

0.2	Deep Resistivity	2000
0.2	Medium Resistivity	2000
0.2	Shallow Resistivity	2000
15000	Line Tension	0

LSPD



0	Gamma Ray	150
-200	SP (mV)	0
-160	RxoRt	40

0.2	Deep Resistivity	2000
0.2	Medium Resistivity	2000
0.2	Shallow Resistivity	2000
15000	Line Tension	0

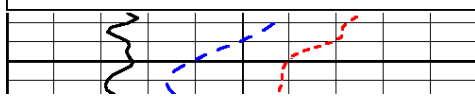
LSPD

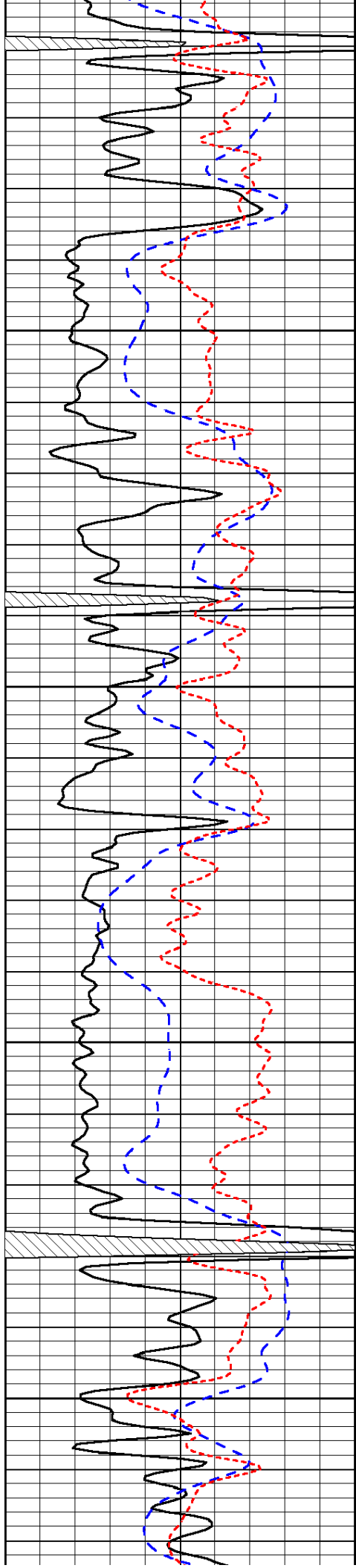
Database File: c:\warrior\data\amwar_buckley-doll # 1-18\amwar_010913hd.db
 Dataset Pathname: DIL/awstack
 Presentation Format: dil
 Dataset Creation: Wed Jan 09 19:08:13 2013
 Charted by: Depth in Feet scaled 1:240

0	Gamma Ray	150
-200	SP (mV)	0
-160	RxoRt	40

0.2	Deep Resistivity	2000
0.2	Medium Resistivity	2000
0.2	Shallow Resistivity	2000
15000	Line Tension	0

LSPD



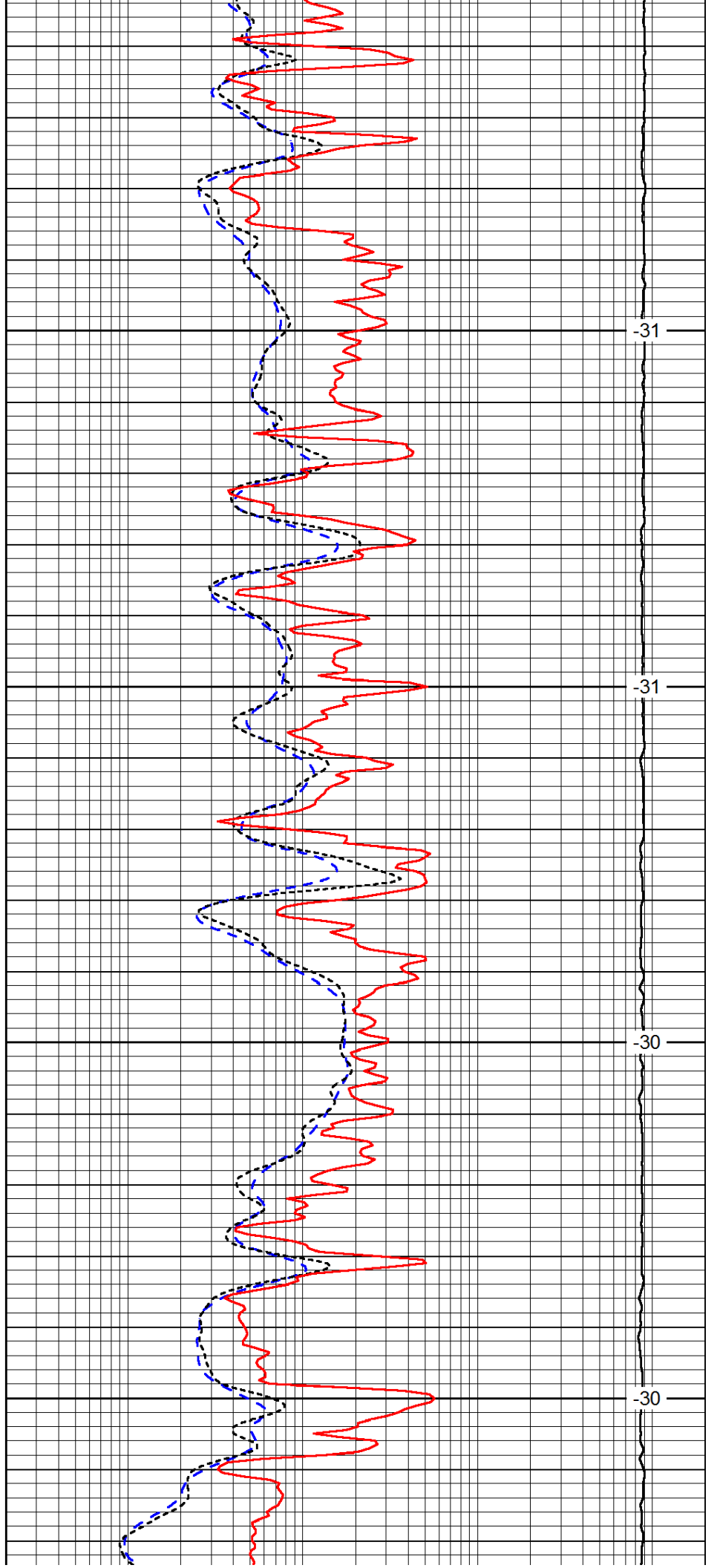


2650

2700

2750

2800

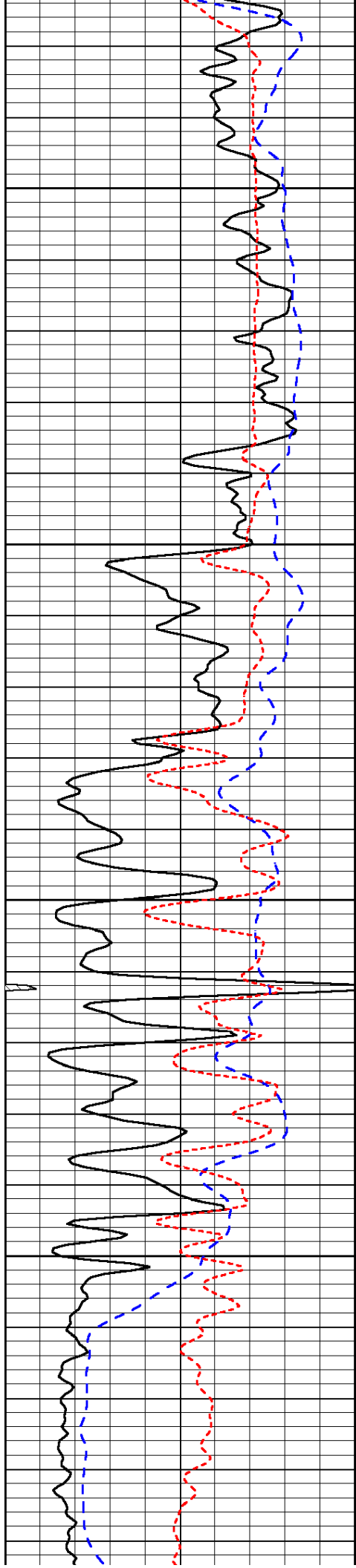


-31

-31

-30

-30

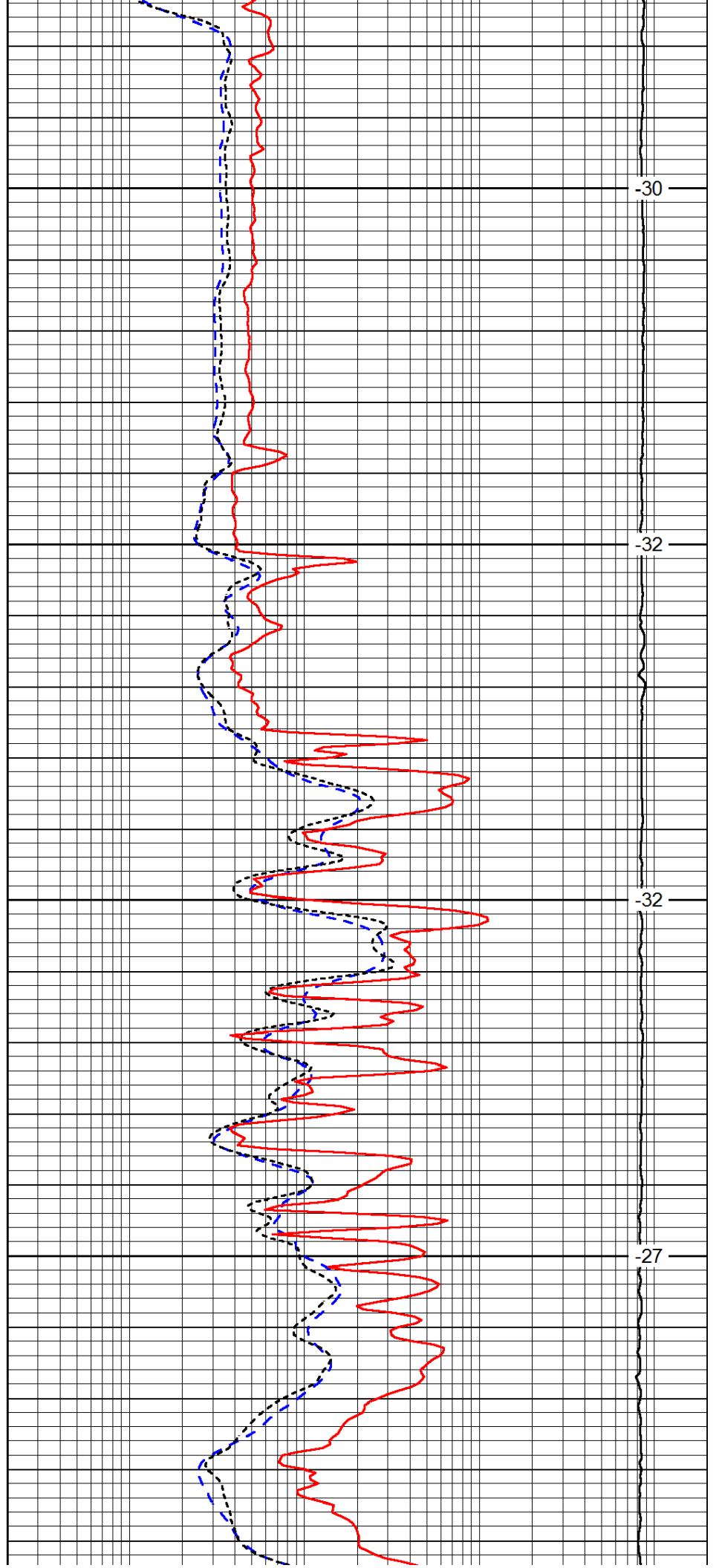


2850

2900

2950

3000

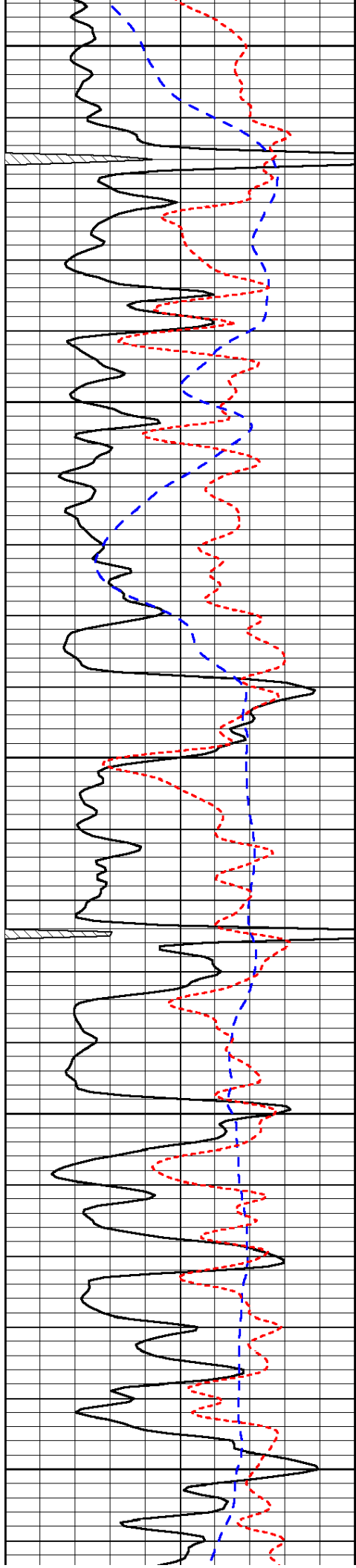


-30

-32

-32

-27



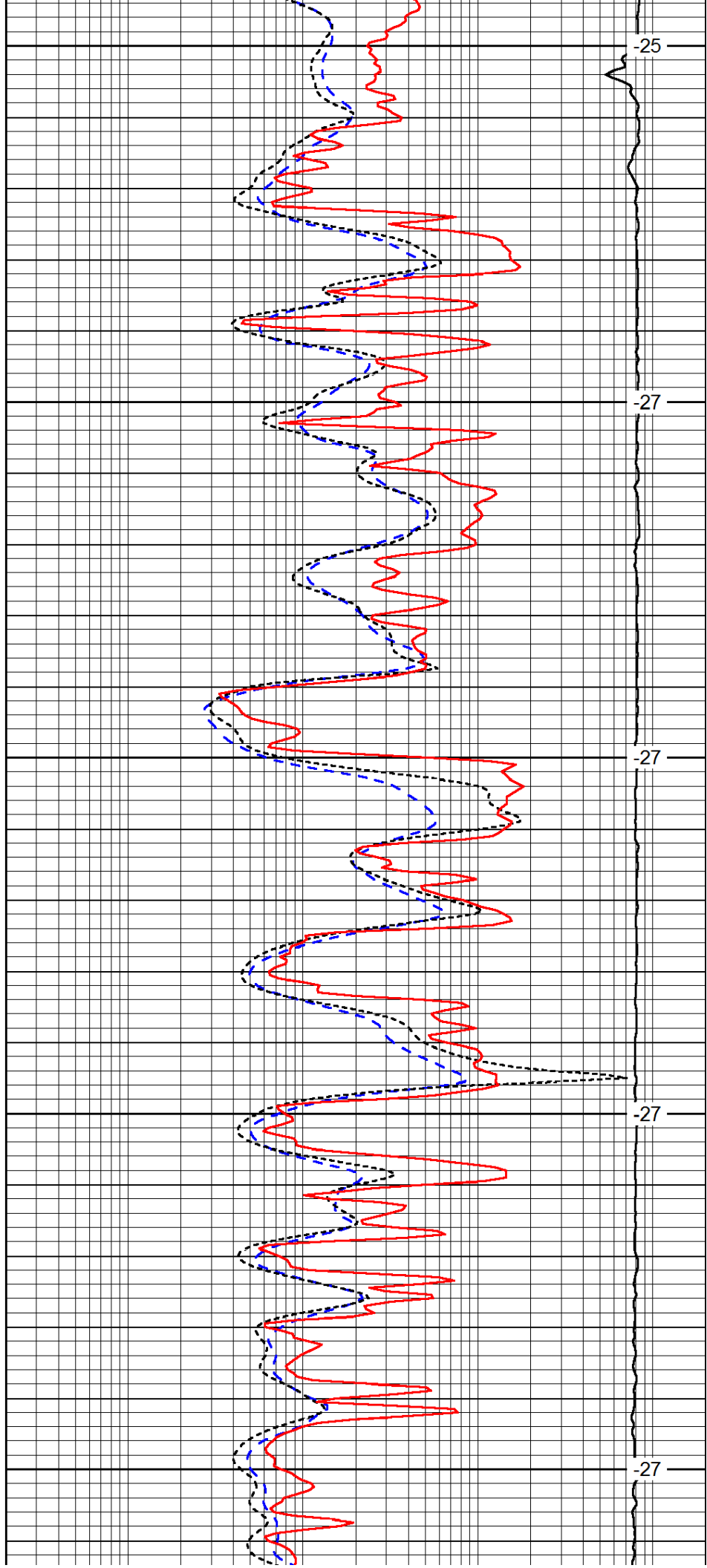
3050

3100

3150

3200

3250



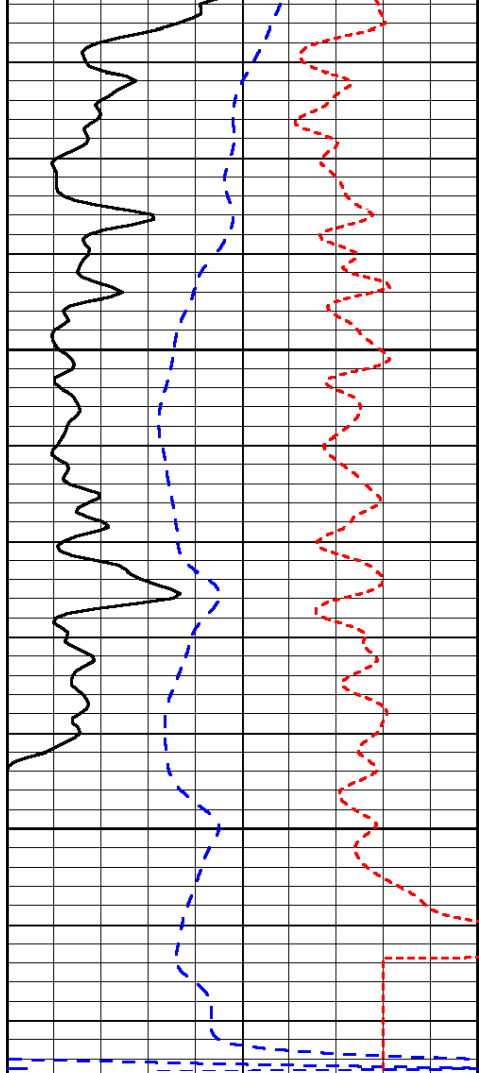
-25

-27

-27

-27

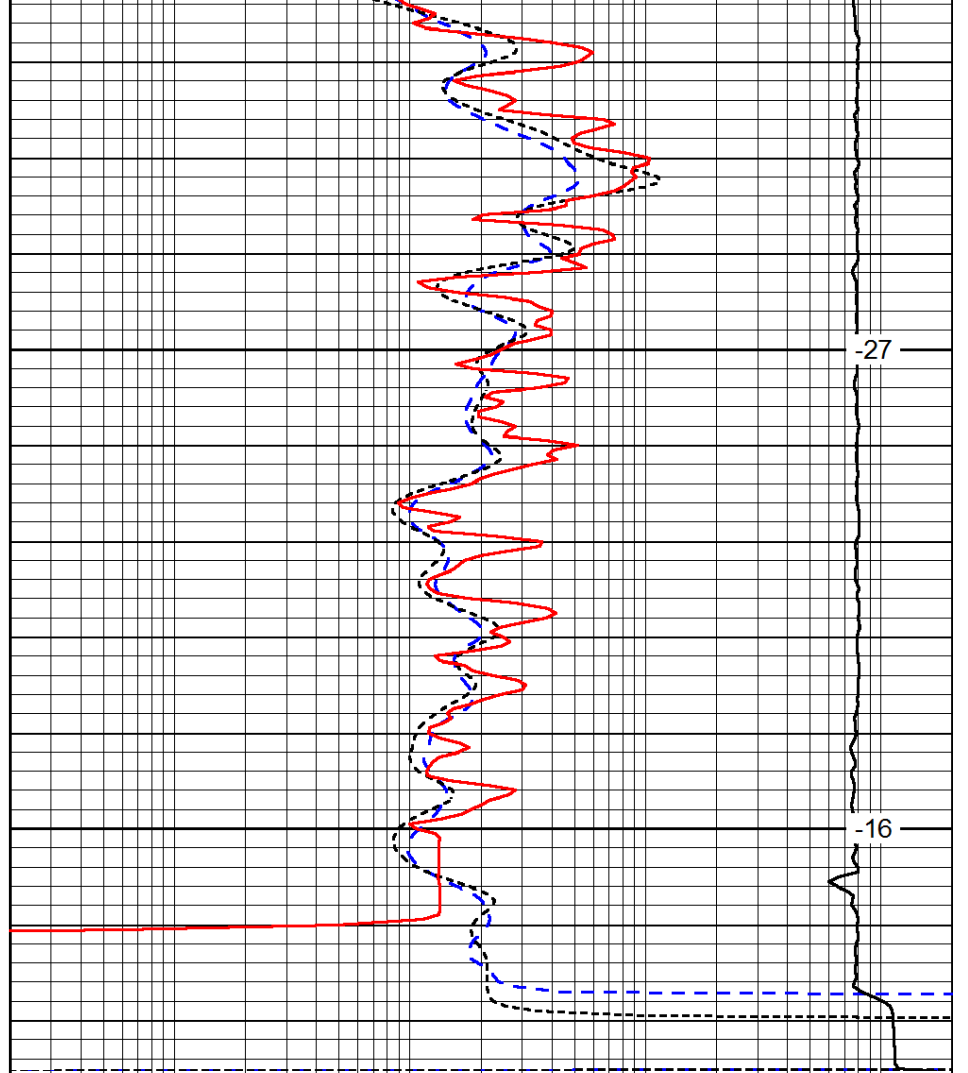
-27



0	Gamma Ray	150
-200	SP (mV)	0
-160	RxoRt	40

3300

3350



0.2	Deep Resistivity	2000
0.2	Medium Resistivity	2000
0.2	Shallow Resistivity	2000
15000	Line Tension	0

-27

-16

LSPD