



Pioneer Energy Services

## Borehole Compensated Sonic Log

15-159-22,721-00-00

**Company** American Warrior, Inc.  
**Well** Volkland No.2-32  
**Field** Chase-Silica  
**County** Rice **State** Kansas  
**Location** 1050' FSL & 2292' FWL  
**Sec:** 32 **Twp:** 18S **Rge:** 9W

Other Services  
CNL/CDL  
MEL/DIL

**Permanent Datum** Ground Level Elevation 1712  
**Log Measured From** Kelly Bushing 8 Ft. Above Perm. Datum  
**Drilling Measured From** Kelly Bushing

**Elevation**  
 K.B. 1720  
 D.F. 1712  
 G.L. 1712

Date	12/29/2012	
Run Number	Two	
Type Log	BHC Sonic	
Depth Driller	3340	
Depth Logger	3338	
Bottom Logged Interval	3327	
Top Logged Interval	300	
Type Fluid In Hole	Chemical	
Salinity, PPM CL	7,600	
Density	9.1	
Level	Full	
Max. Rec. Temp. F	109	
Operating Rig Time	4 Hours	
Equipment -- Location	17 Days	
Recorded By	C. Desaire	
Witnessed By	Jim Musgrove	

Borehole Record				Casing Record			
Run No.	Bit	From	To	Size	Wgt.	From	To
1	12.25	00	335	8.625	24#	00	335
2	7.875	335	3340				

<<< Fold Here >>>

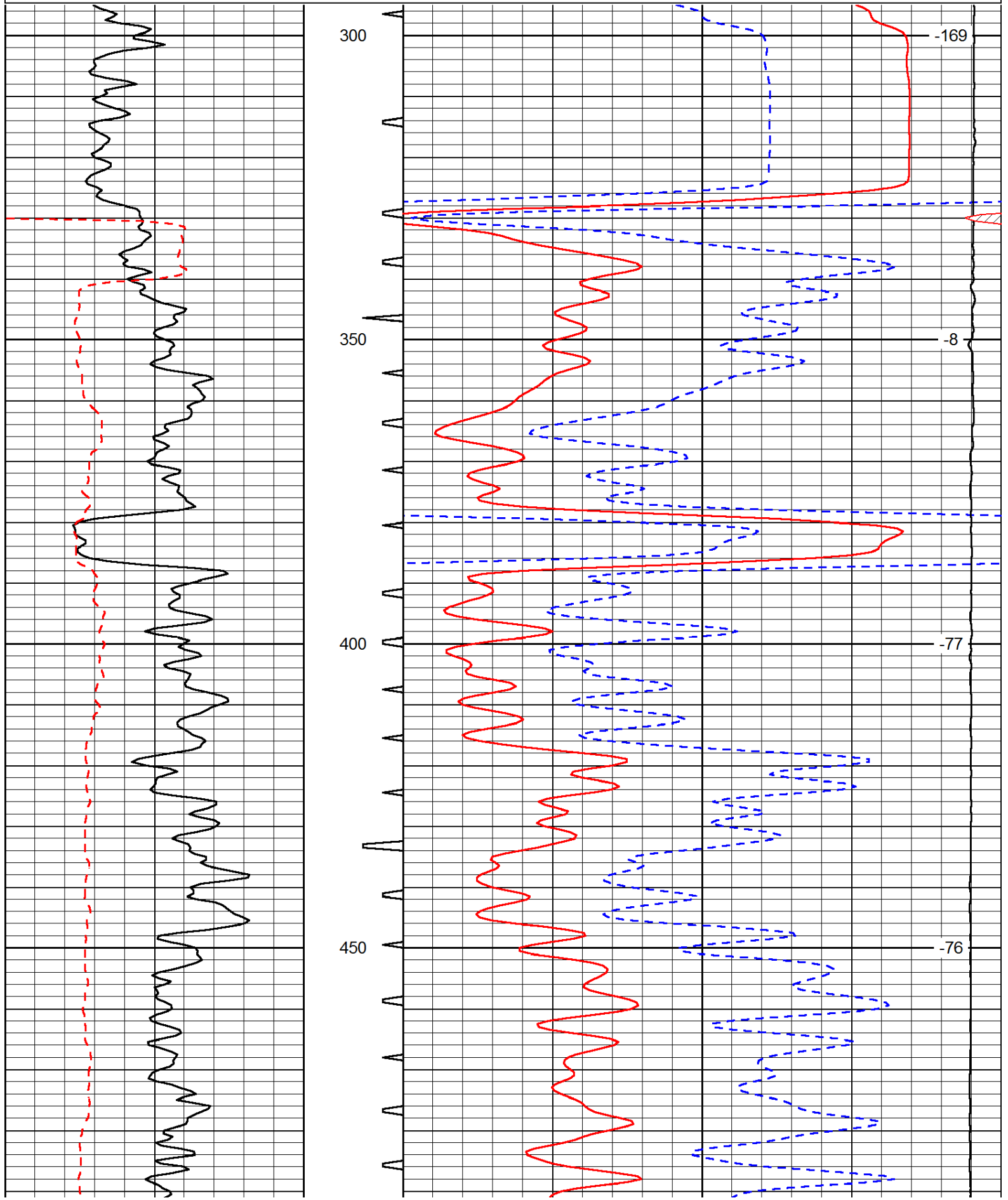
All interpretations are opinions based on inferences from electrical or other measurements and we cannot and do not guarantee the accuracy or correctness of any interpretation, and we shall not, except in the case of gross or willful negligence on our part, be liable or responsible for any loss, costs, damages, or expenses incurred or sustained by anyone resulting from any interpretation made by any of our officers, agents or employees. These interpretations are also subject to our general terms and conditions set out in our current Price Schedule.

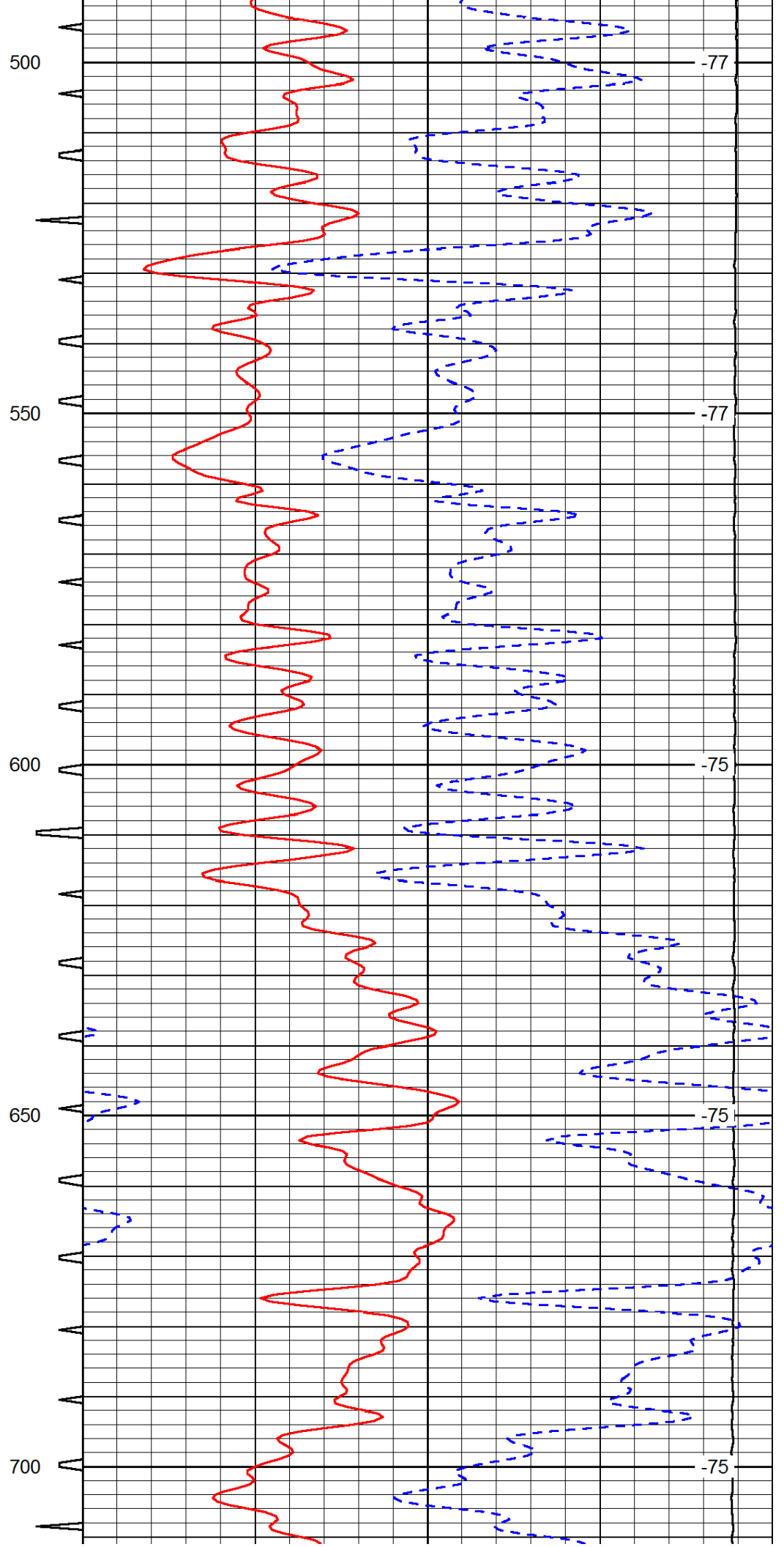
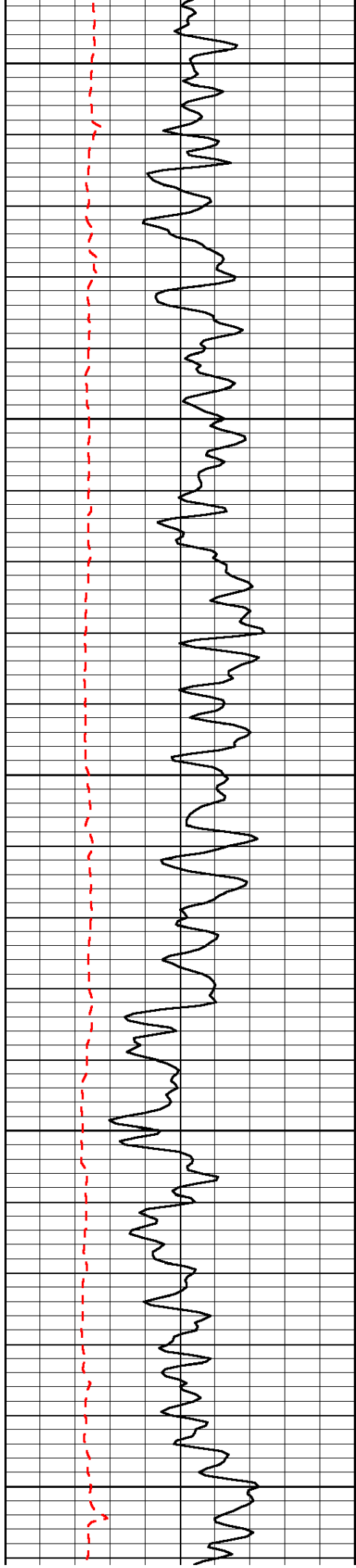
**Comments**

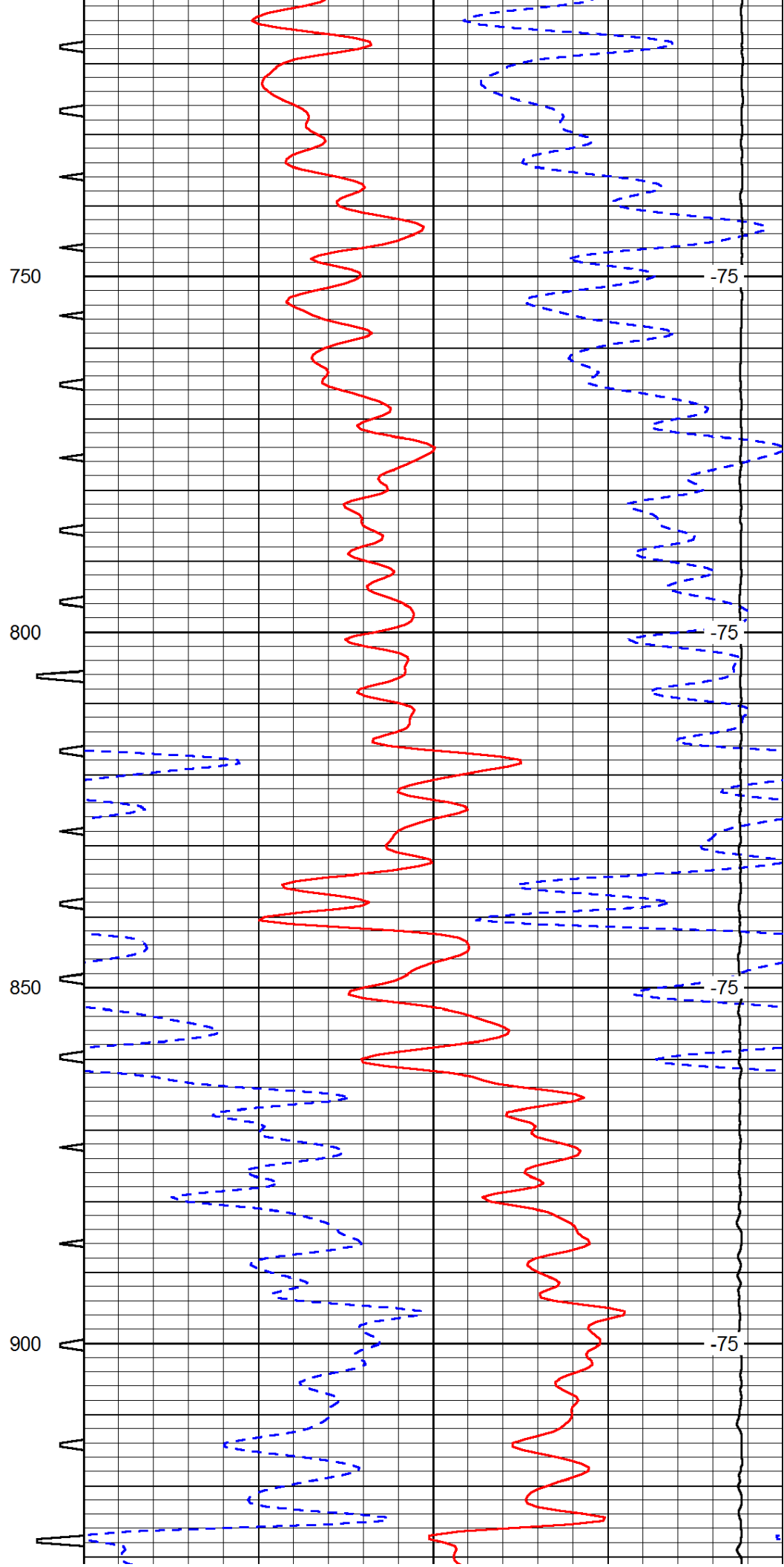
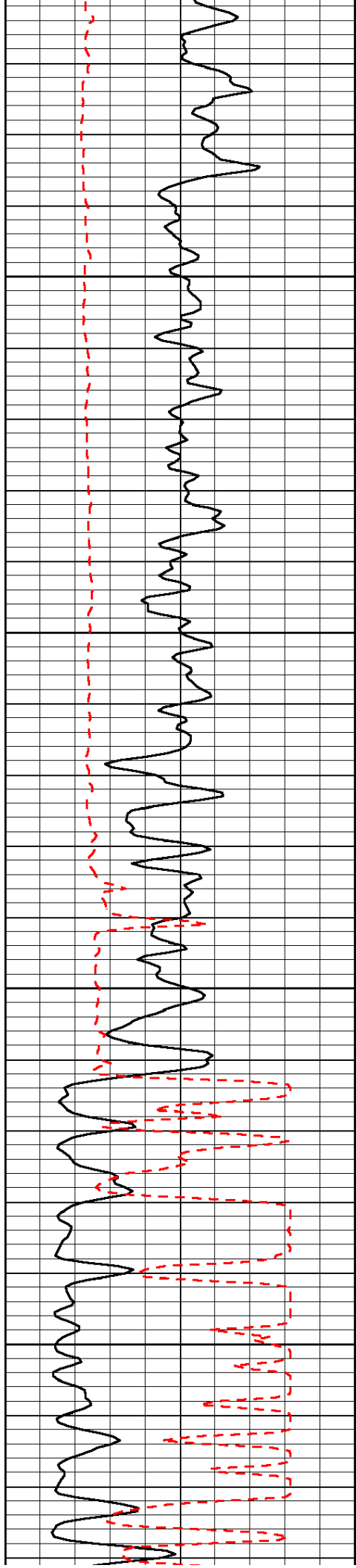
Thank you for using Pioneer Energy Services  
[www.pioneerenergy.com](http://www.pioneerenergy.com)  
 785 625 3858  
  
 Chase KS, 5 1/2 N, 1/2 E, N Into

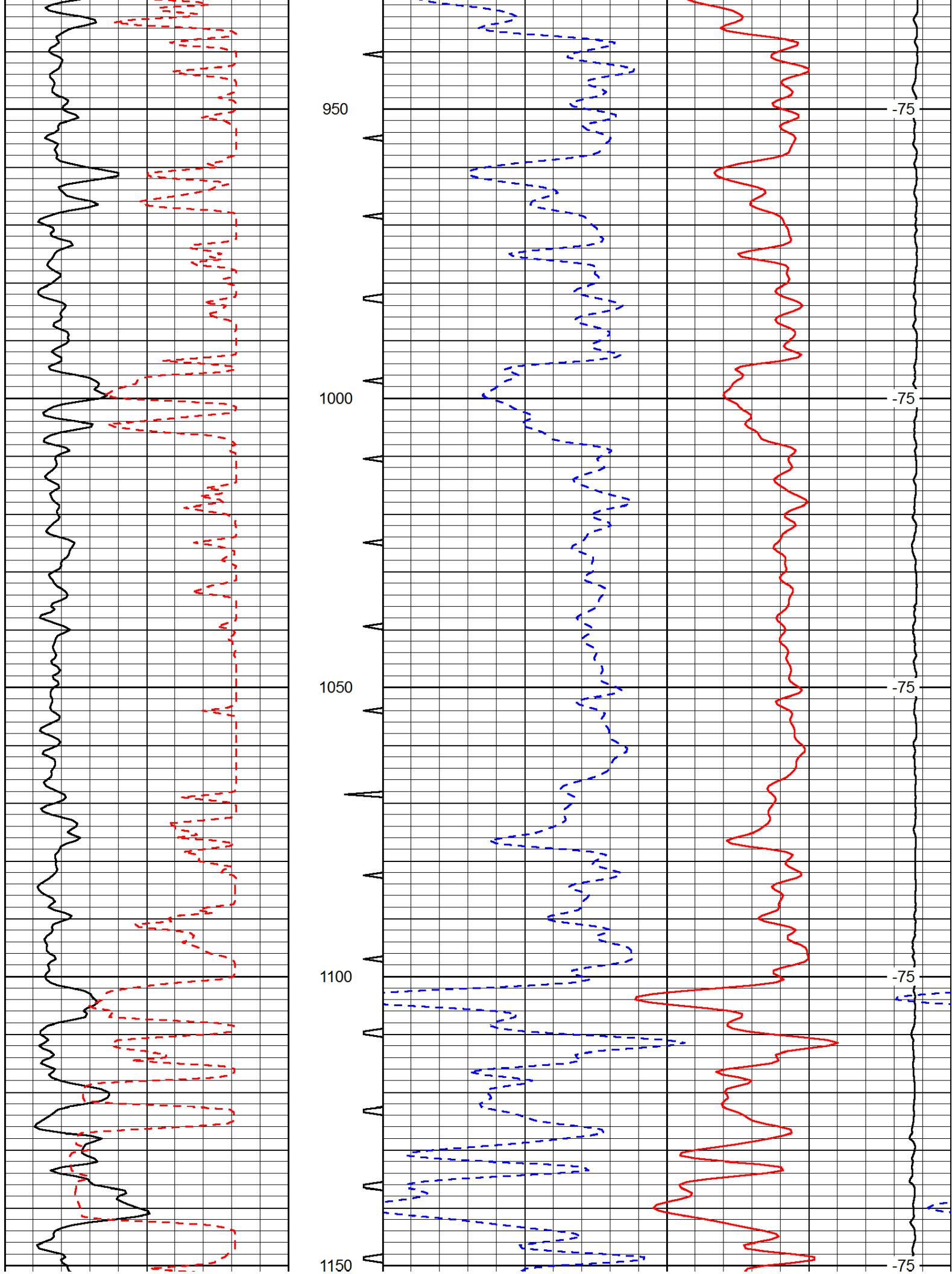
0	Gamma Ray	150	Sonic Int	140	Delta Time (usec/ft)	40
150	Gamma Ray	300	5	0	SPOR	-10
6	Caliper (GAPI)	16		15000	LTEN (lb)	0

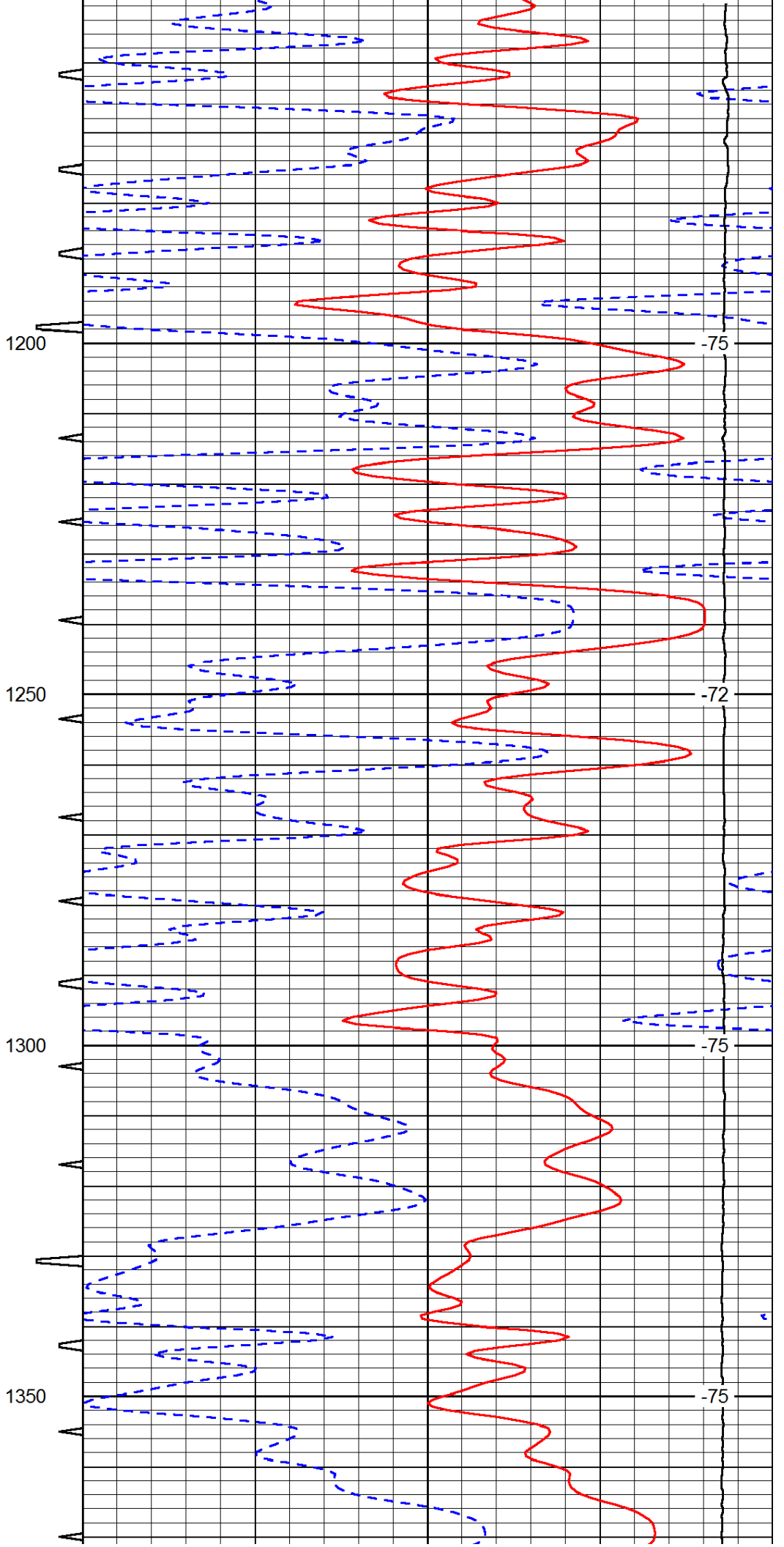
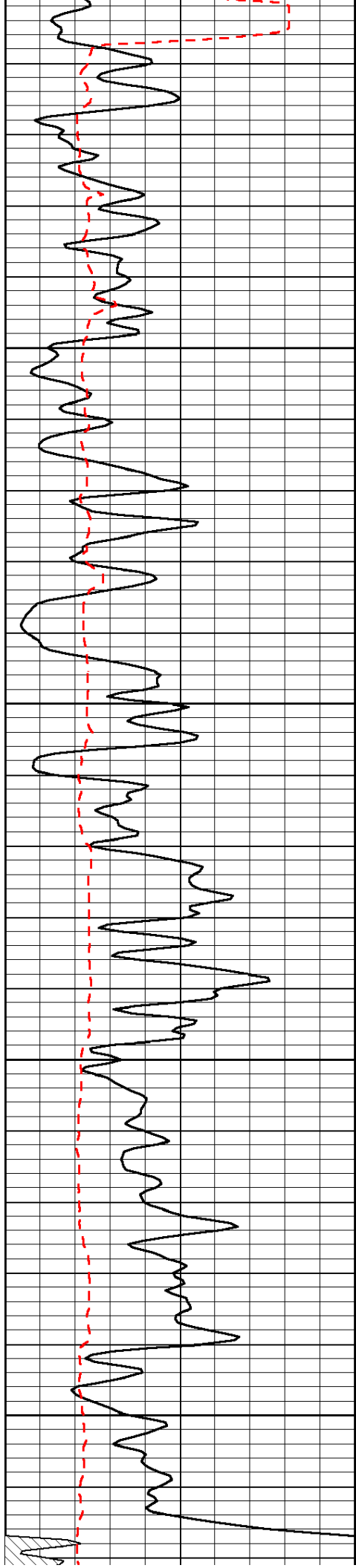
LSPD

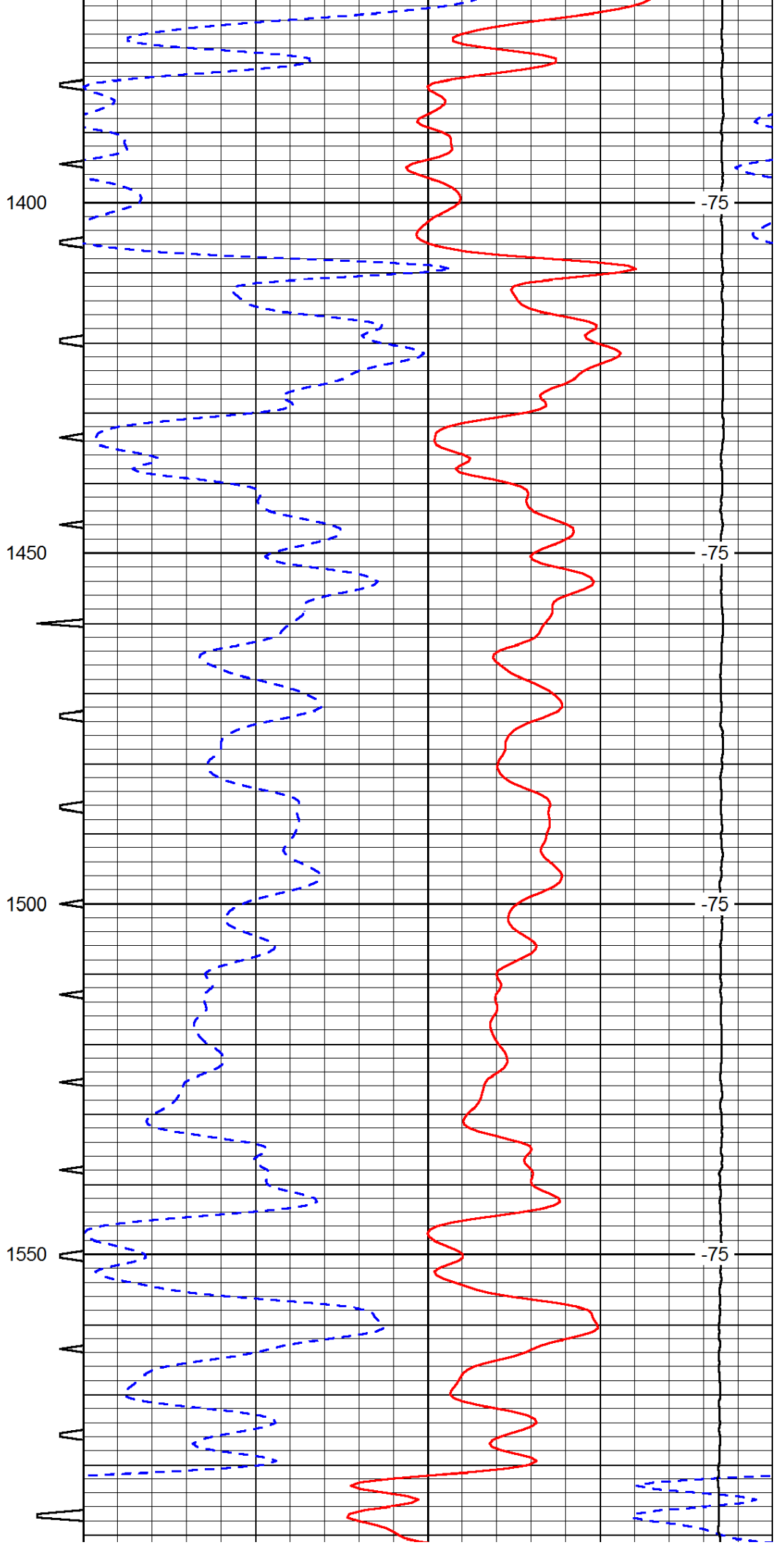
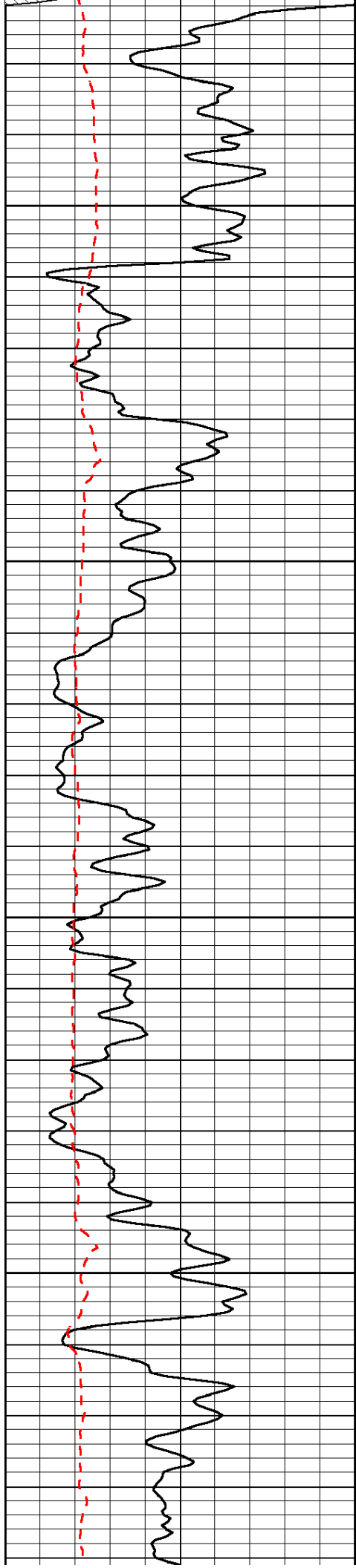


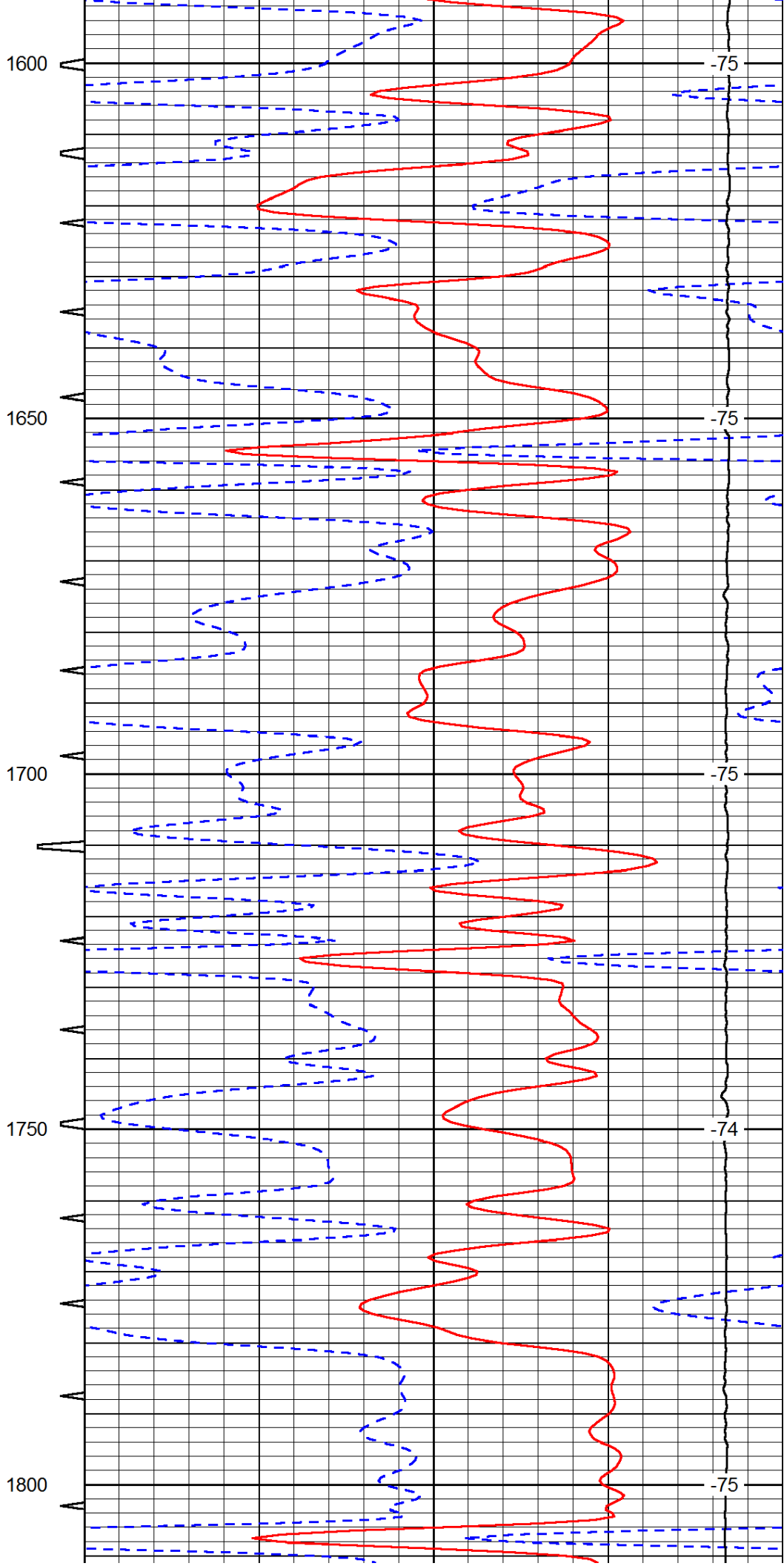
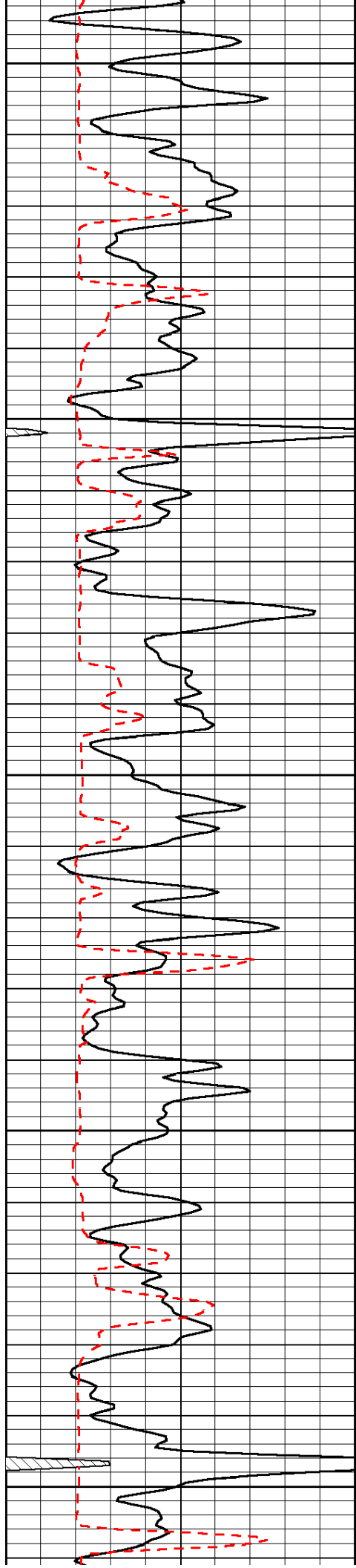


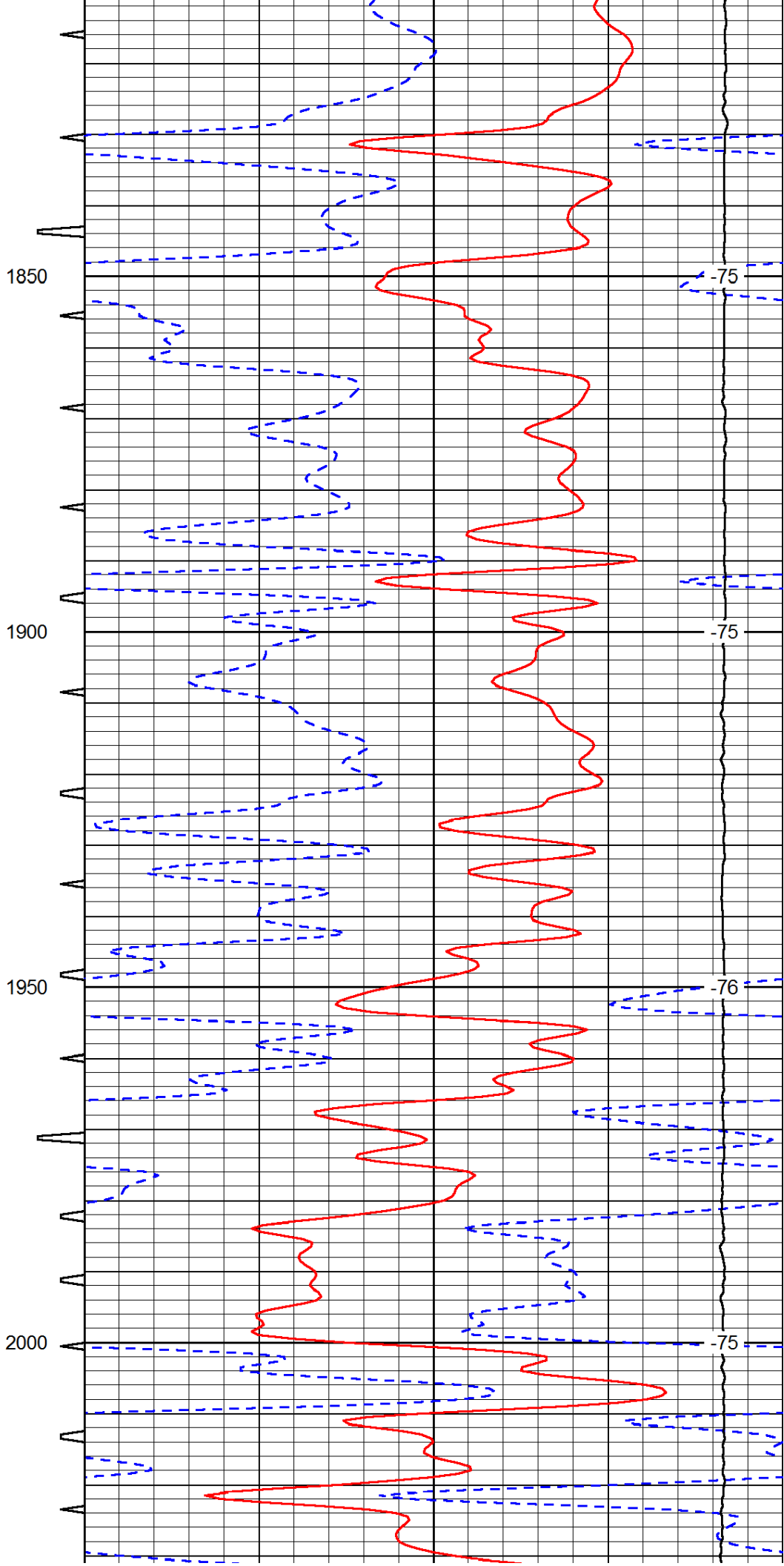
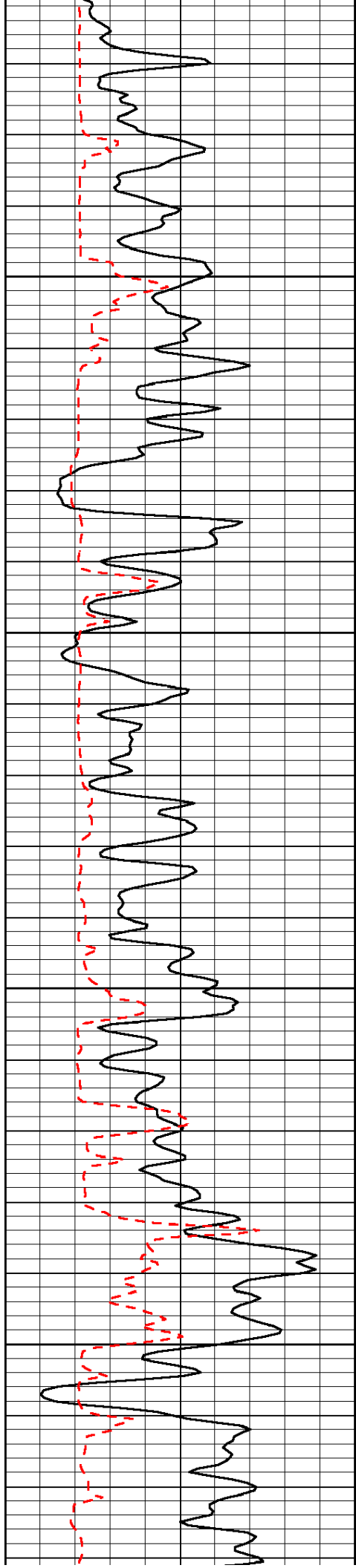


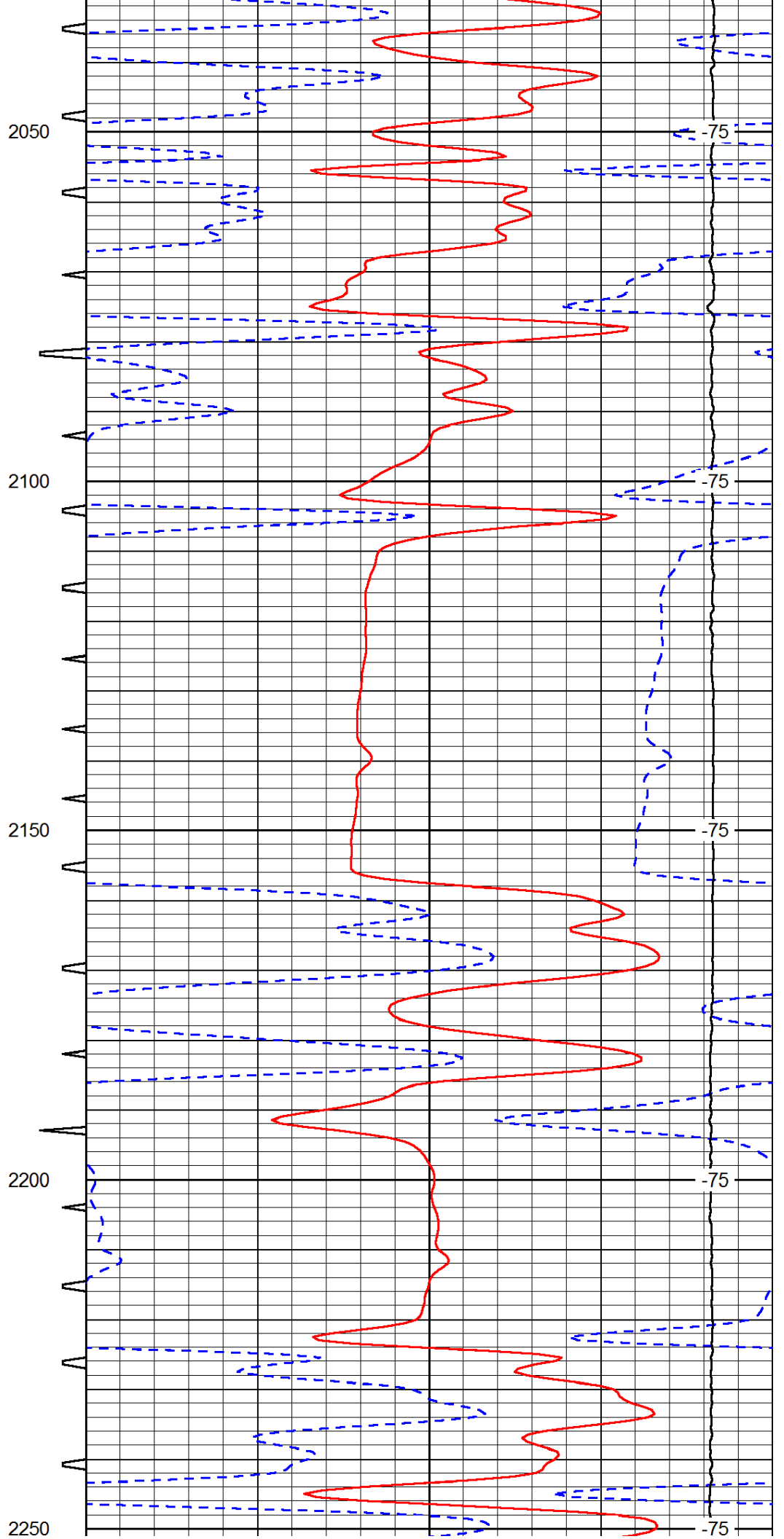
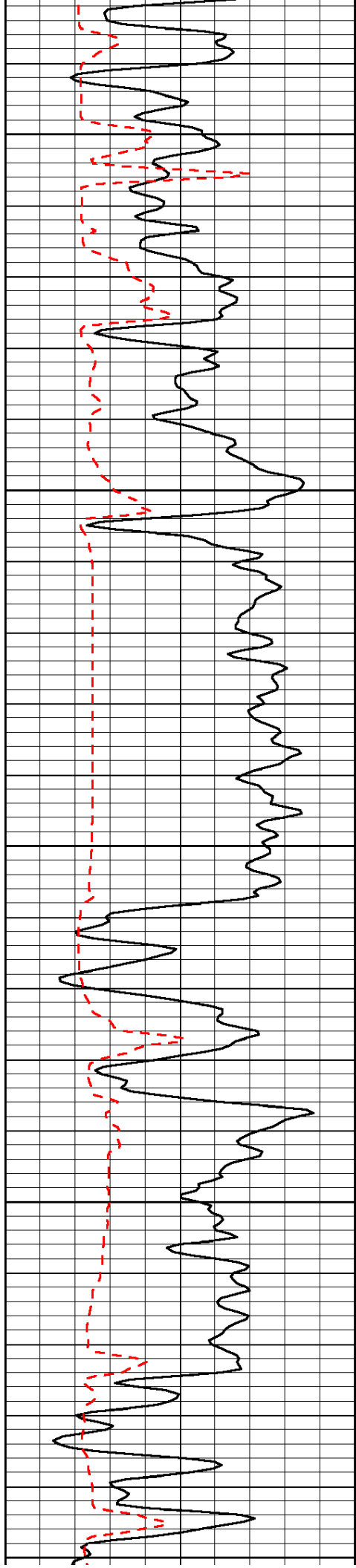


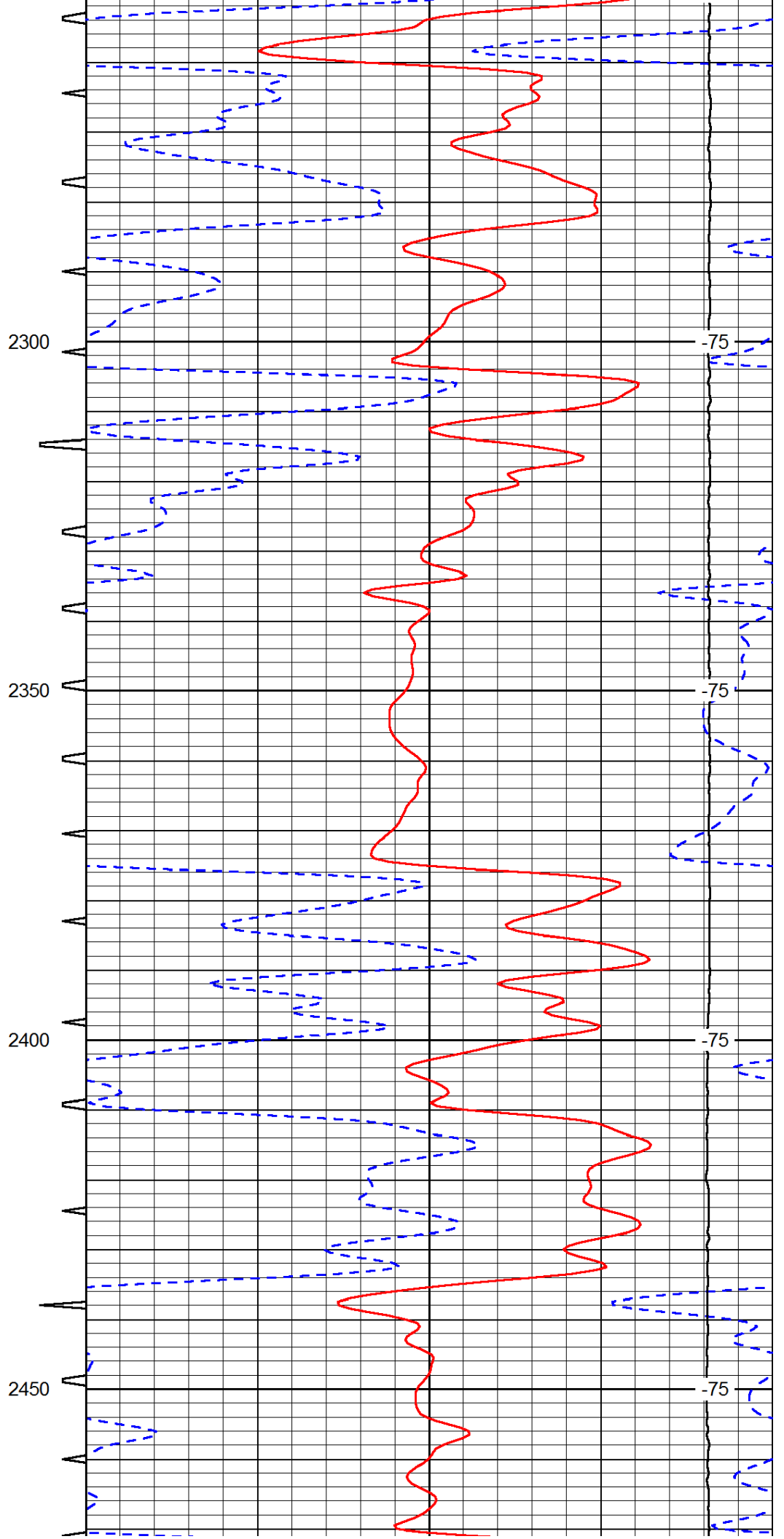
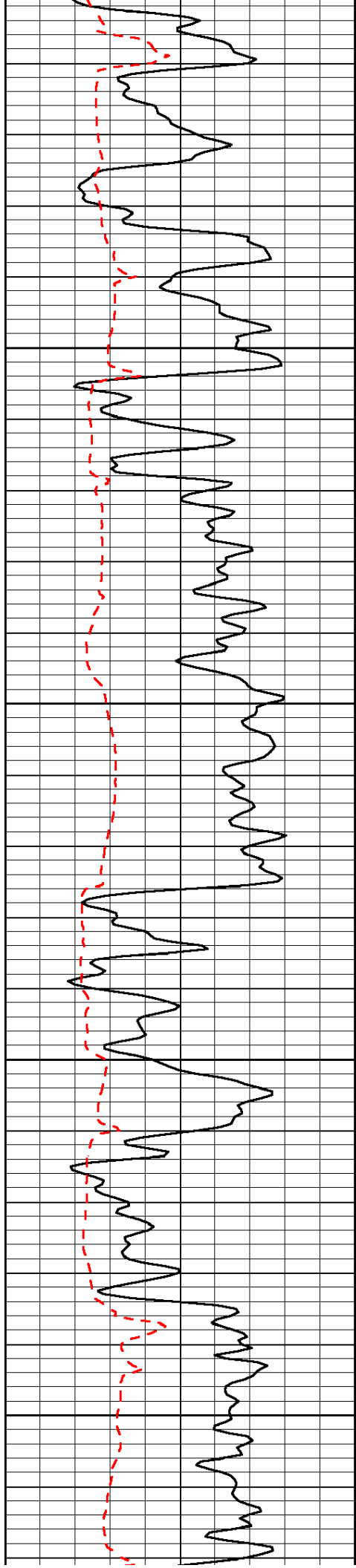


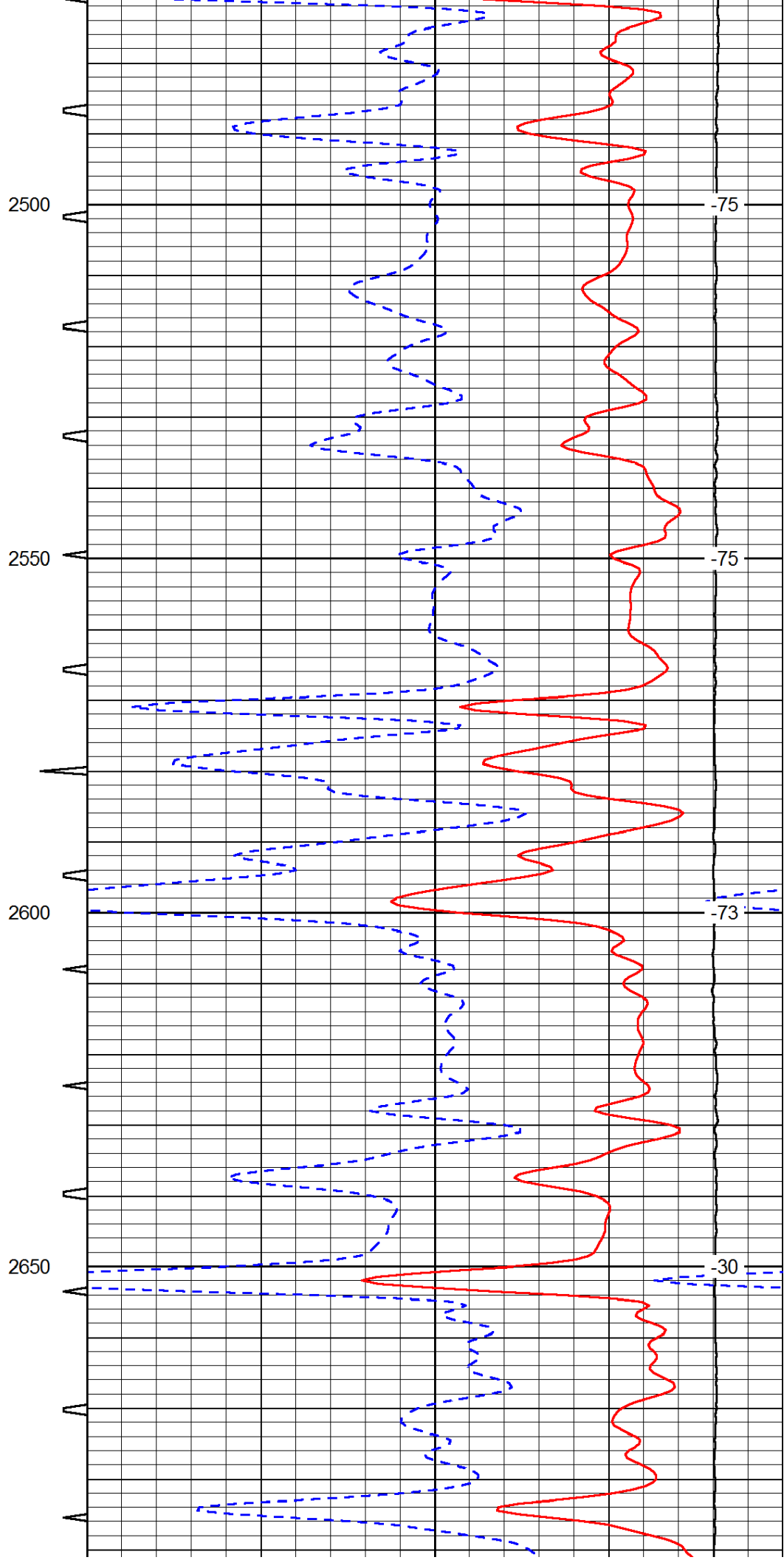
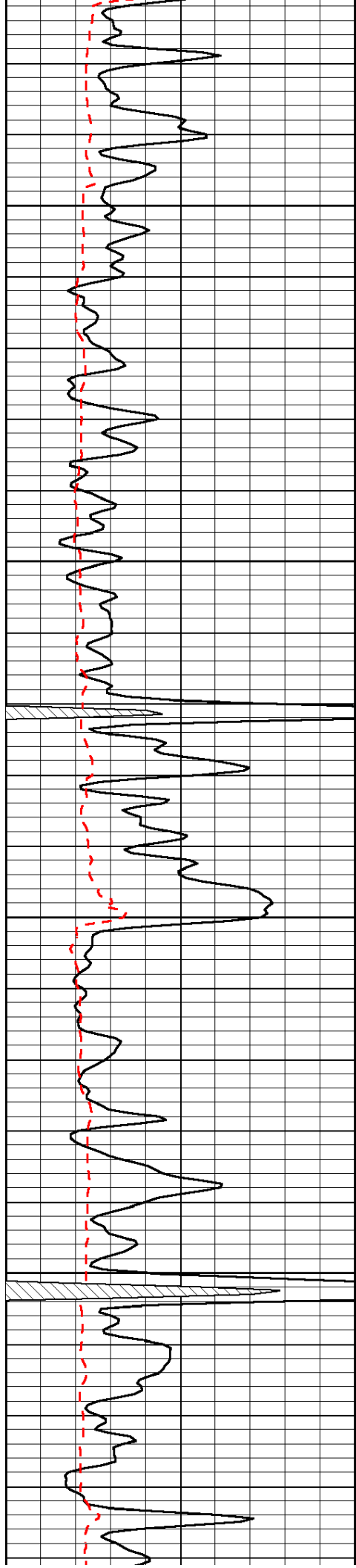


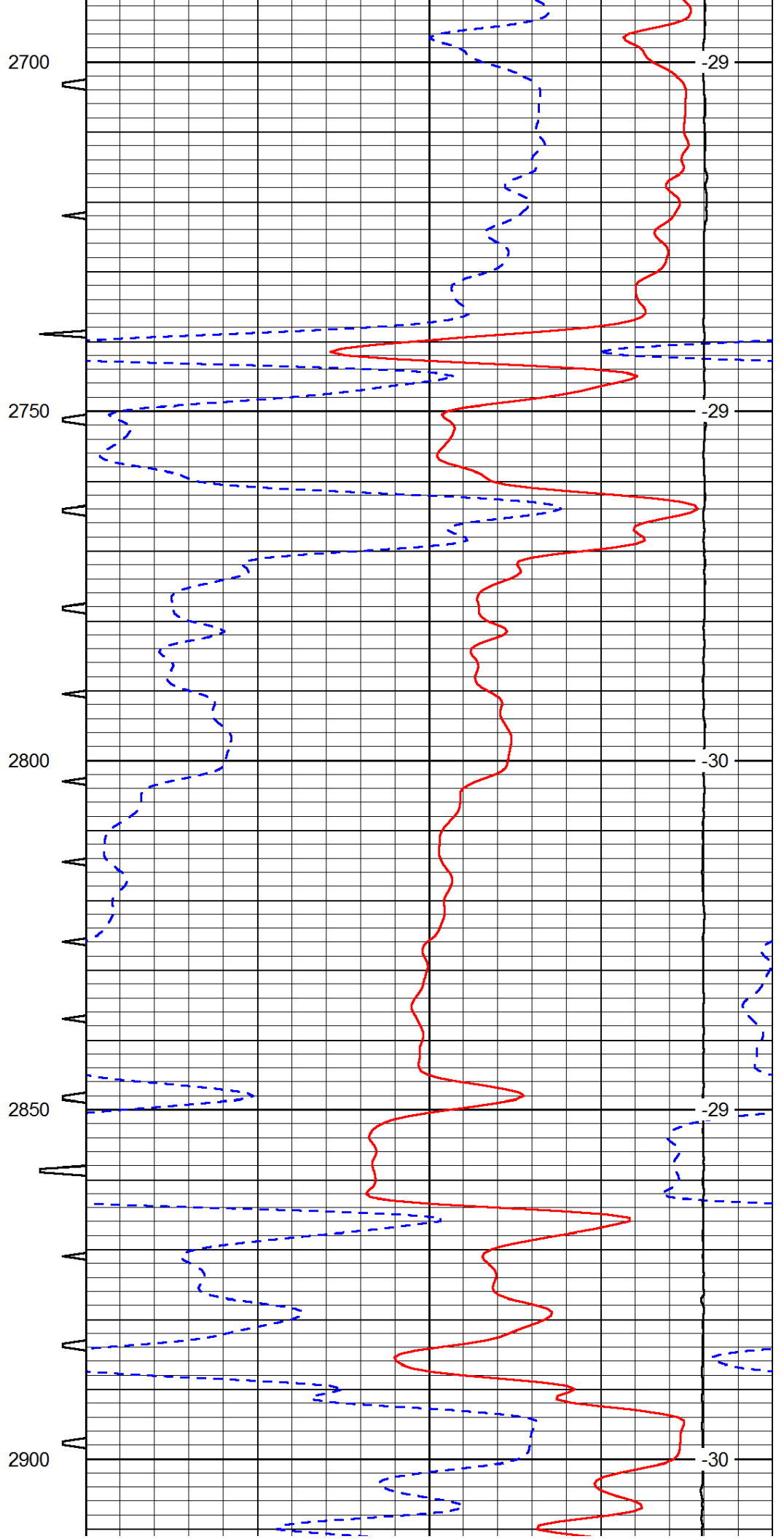
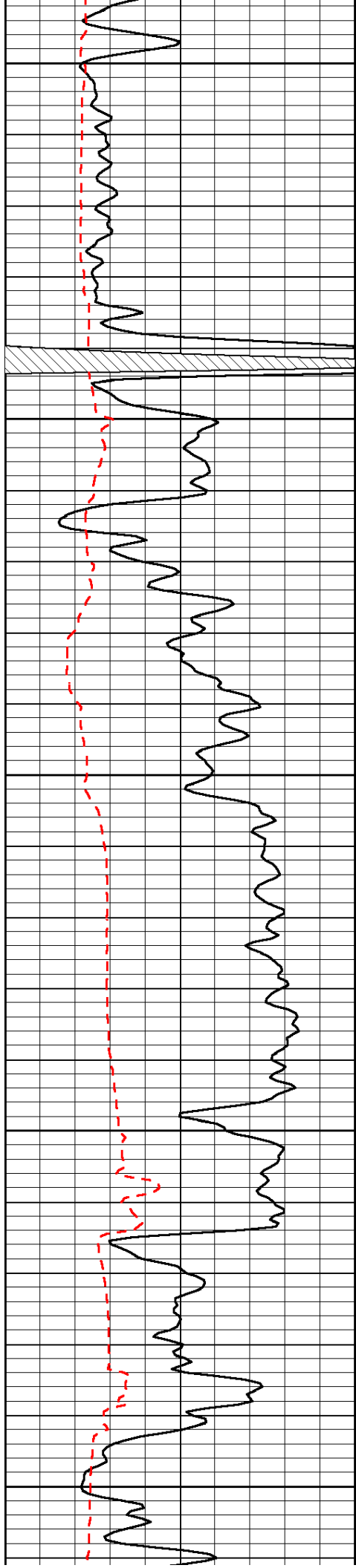


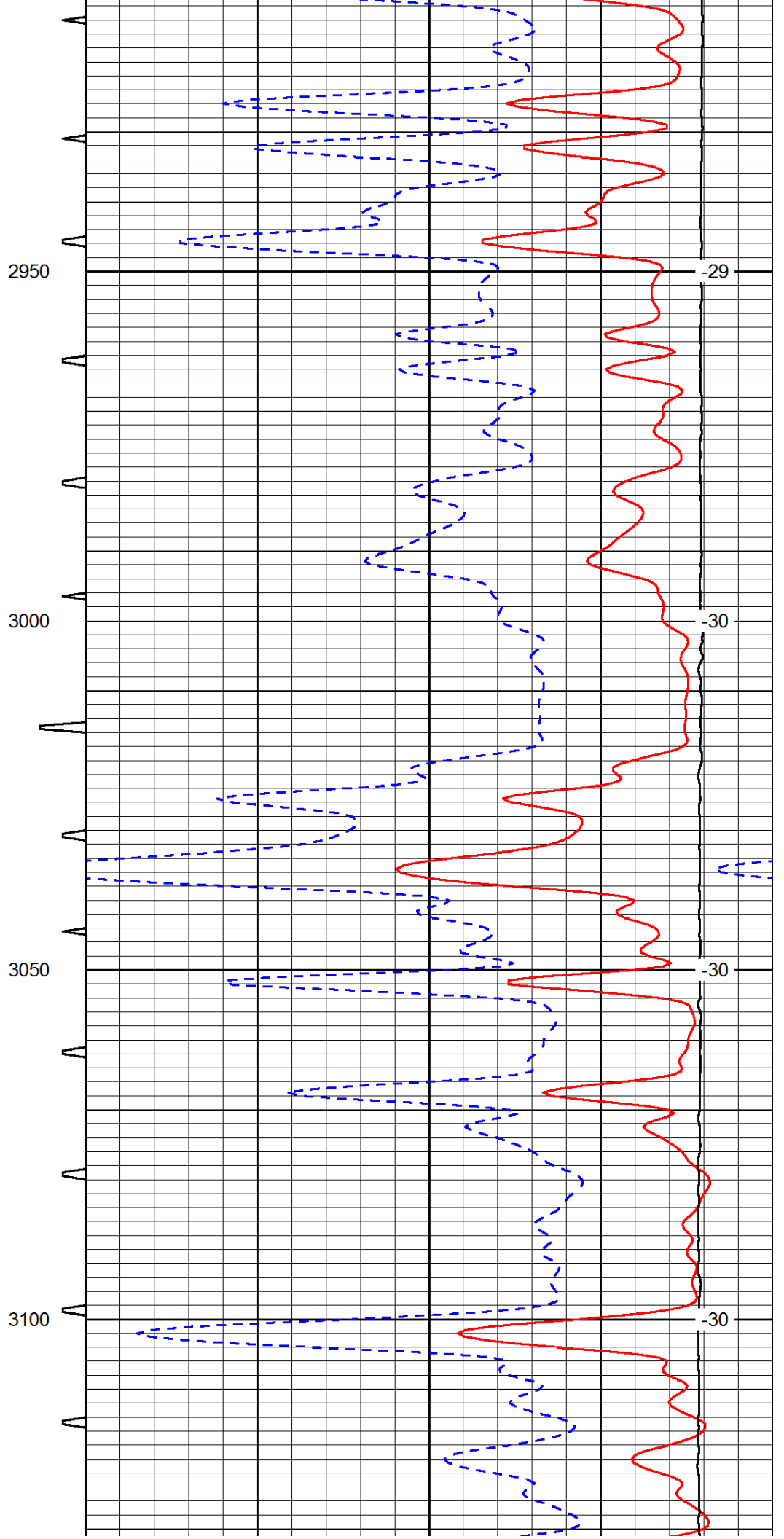
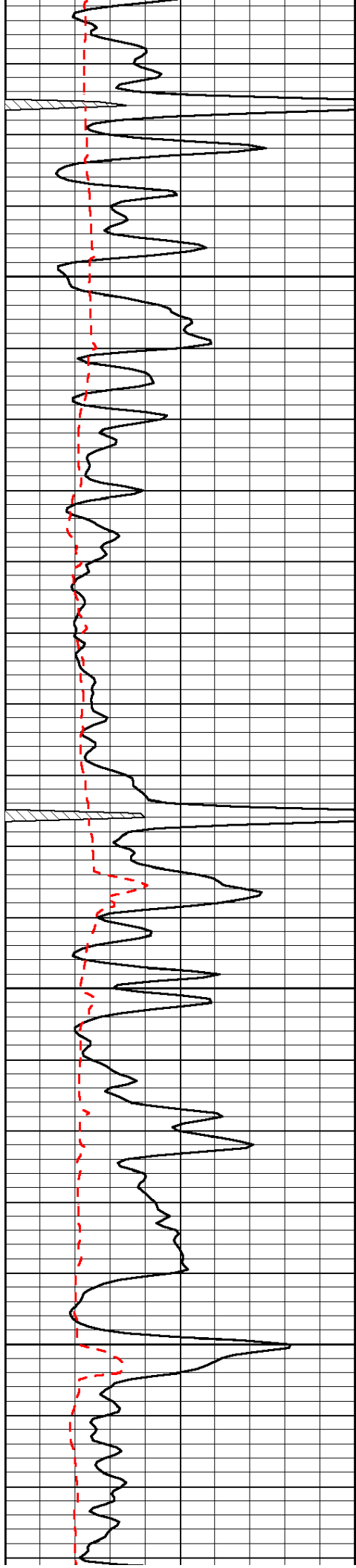


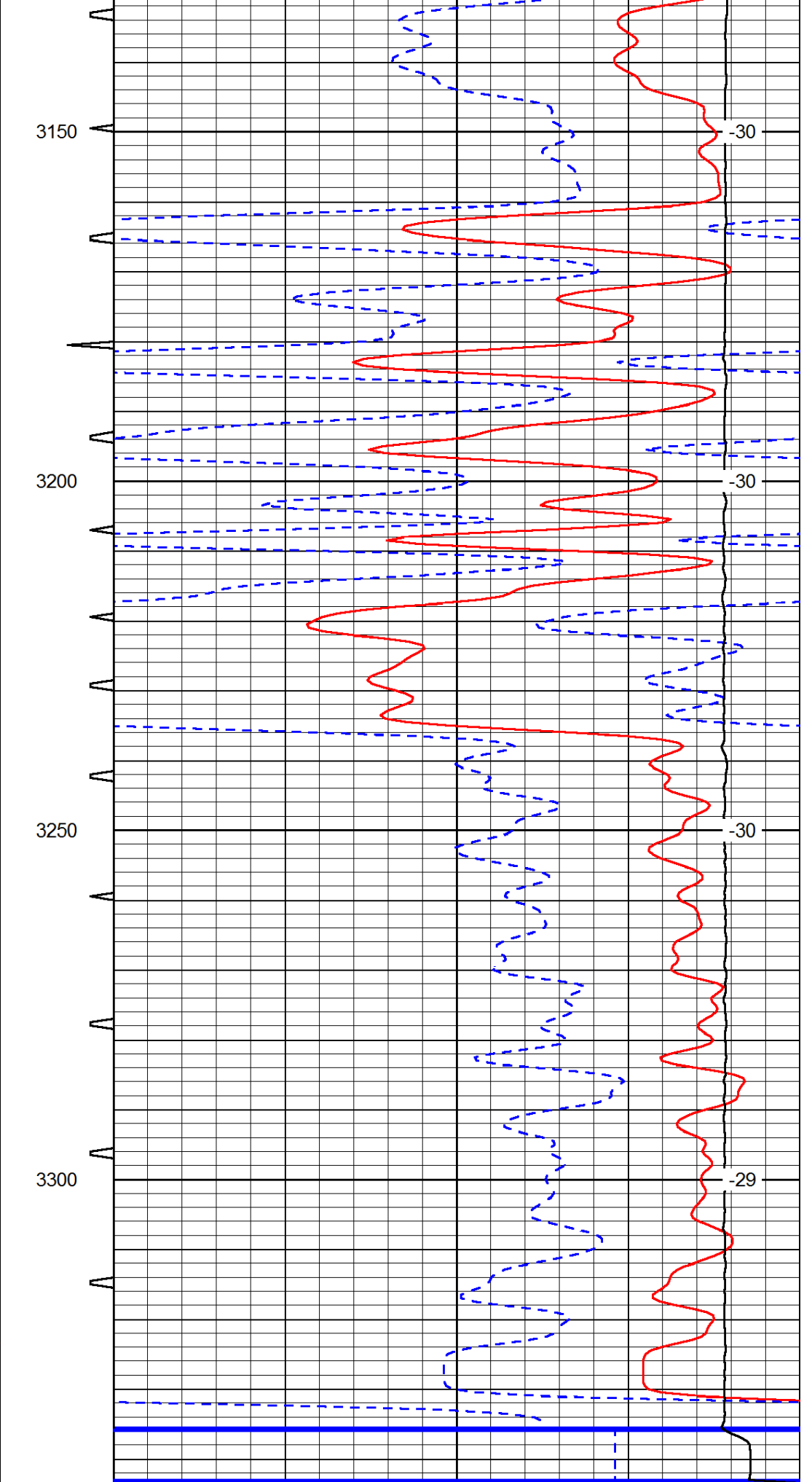
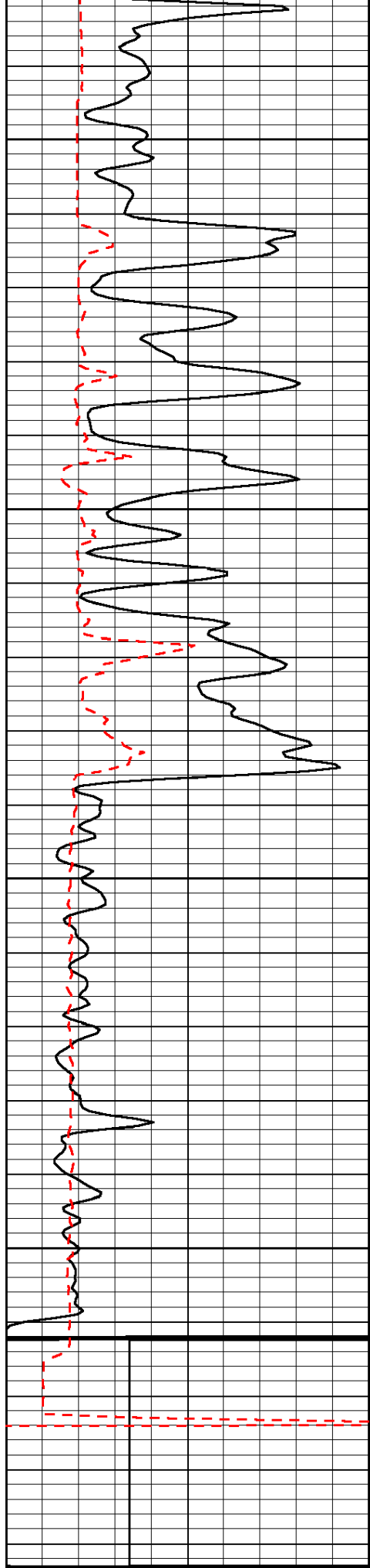












0	Gamma Ray	150	Sonic Int	140	Delta Time (usec/ft)	40
150	Gamma Ray	300	5	30	SPOR	-10

100	Gamma Ray	000	0	00	SPOR	10
6	Caliper (GAPI)	16		15000	LTEN (lb)	0
						LSPD