



**COMPLETION
& PRODUCTION
SERVICES CO.**

**RADIATION
GUARD
LOG**

Company PALOMINO PETROLEUM, INC.
Well MCKINNIE-SCHWARTZKOPT #1
Field LITTLE BLUE EAST
County NESS
State KANSAS

Company PALOMINO PETROLEUM, INC.
Well MCKINNIE-SCHWARTZKOPT #1
Field LITTLE BLUE EAST
County NESS State KANSAS

Location: 1187' FSL & 2551' FWL
API # : 15-135-25488-0000
Other Services

Permanent Datum GROUND LEVEL Elevation 2650
Log Measured From KELLY BUSHING 10' A.G.L.
Drilling Measured From KELLY BUSHING
Elevation
K.B. 2660
D.F. 2658
G.L. 2650

Date	10/13/12
Run Number	ONE
Depth Driller	4710
Depth Logger	4712
Bottom Logged Interval	4711
Top Log Interval	00
Casing Driller	8 5/8" @ 223
Casing Logger	222
Bit Size	7 7/8
Type Fluid in Hole	CHEMICAL MUD
Density / Viscosity	9.4/48
pH / Fluid Loss	10.5/7.2
Source of Sample	FLOWLINE
Rim @ Meas. Temp	0.85 @ 85F
Rmf @ Meas. Temp	0.64 @ 85F
Rmc @ Meas. Temp	1.02 @ 85F
Source of Rmf / Rmc	MEASURED
Rim @ BHT	0.59 @ 122F
Time Circulation Stopped	2 HOURS
Time Logger on Bottom	
Maximum Recorded Temperature	122F
Equipment Number	680
Location	HAYS, KS.
Recorded By	JEFF GRONEMEG
Witnessed By	RYAN SEIB

<<< Fold Here >>>

All interpretations are opinions based on inferences from electrical or other measurements and we cannot and do not guarantee the accuracy or correctness of any interpretation, and we shall not, except in the case of gross or willful negligence on our part, be liable or responsible for any loss, costs, damages, or expenses incurred or sustained by anyone resulting from any interpretation made by any of our officers, agents or employees. These interpretations are also subject to our general terms and conditions set out in our current Price Schedule.

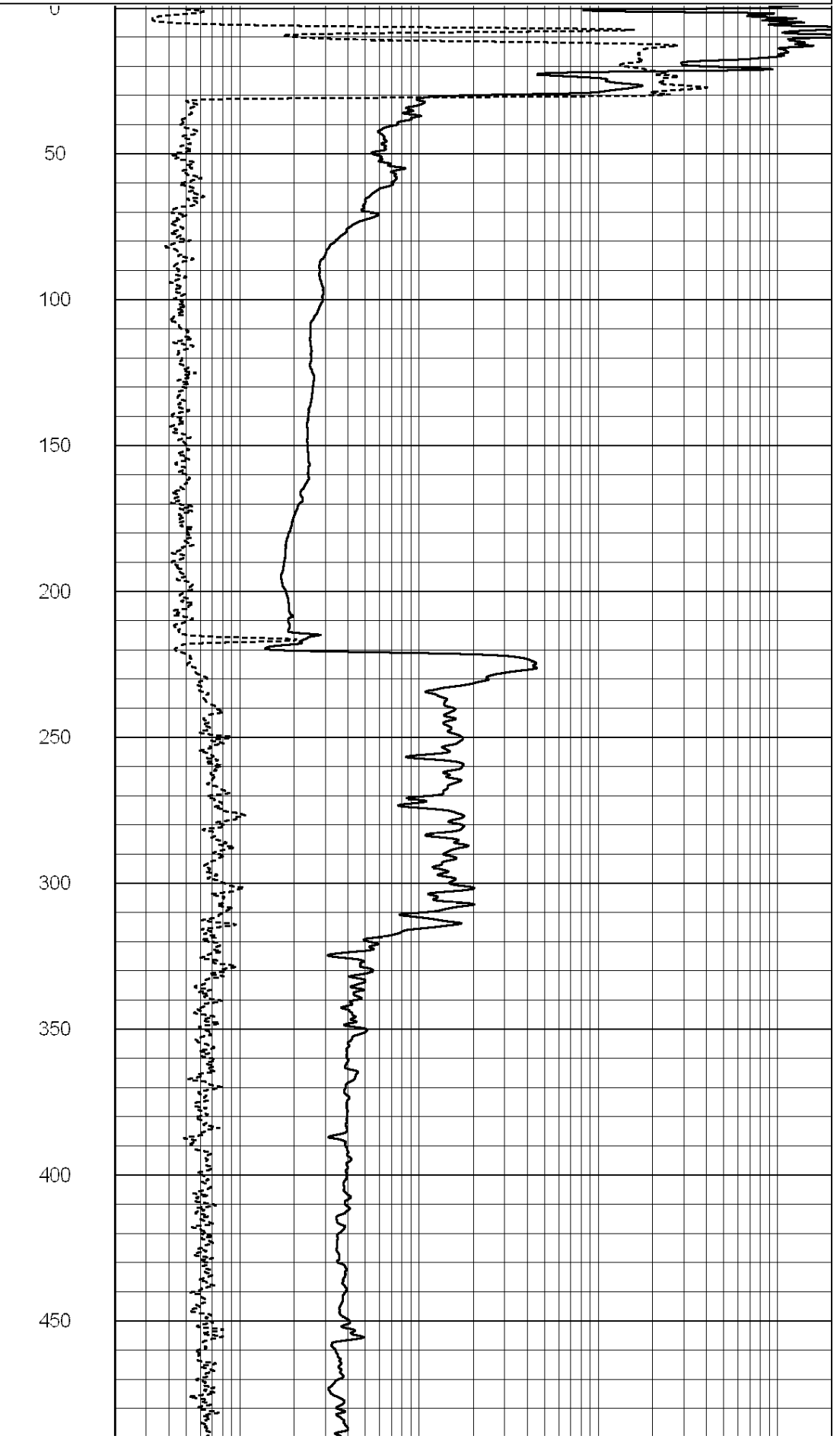
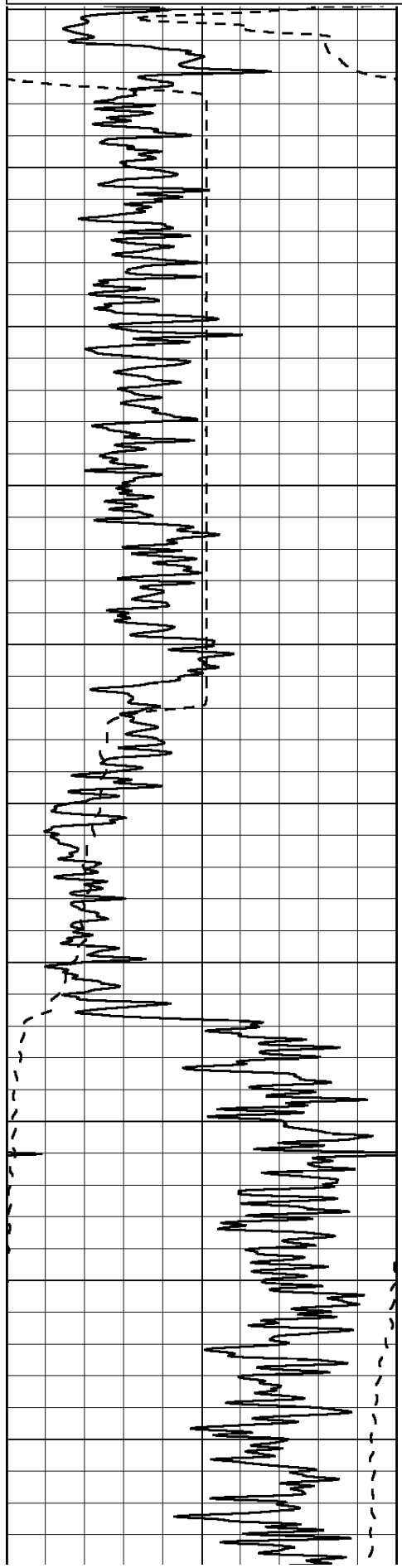
Comments

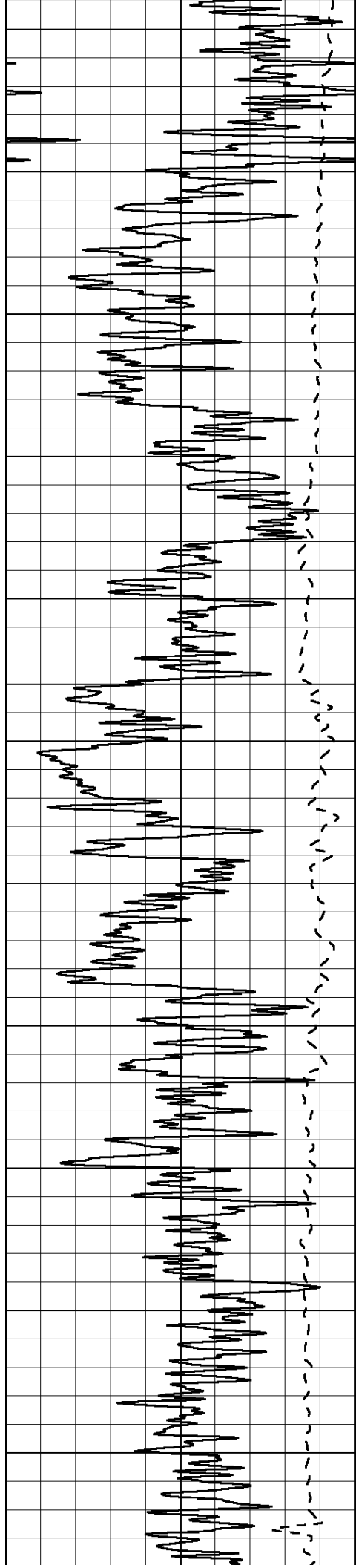
**THANK YOU FOR USING SUPERIOR WELL SERVICE (785) 628-6395
DIRECTIONS**

**UTICA, KS. - W. EDGE OF TOWN (RD. D) - 2 MILES WEST TO RD B - 1 MILE SOUTH
1/2 MILE WEST - NORTH INTO**

Database File: 009748rag.db
Dataset Pathname: pass3.3
Presentation Format: rag2
Dataset Creation: Sat Oct 13 23:07:41 2012 by Calc Open-Cased 090629
Charted by: Depth in Feet scaled 1:600

0	GAMMA RAY (GAPI)	150	ABHV (ft3)	0.2	GUARD (Ohm-m)	2000
-100	SP (mV)	100		0	NEUTRON (NAPI)	1000
-----			TBHV (ft3)	-----		





500

550

600

650

700

750

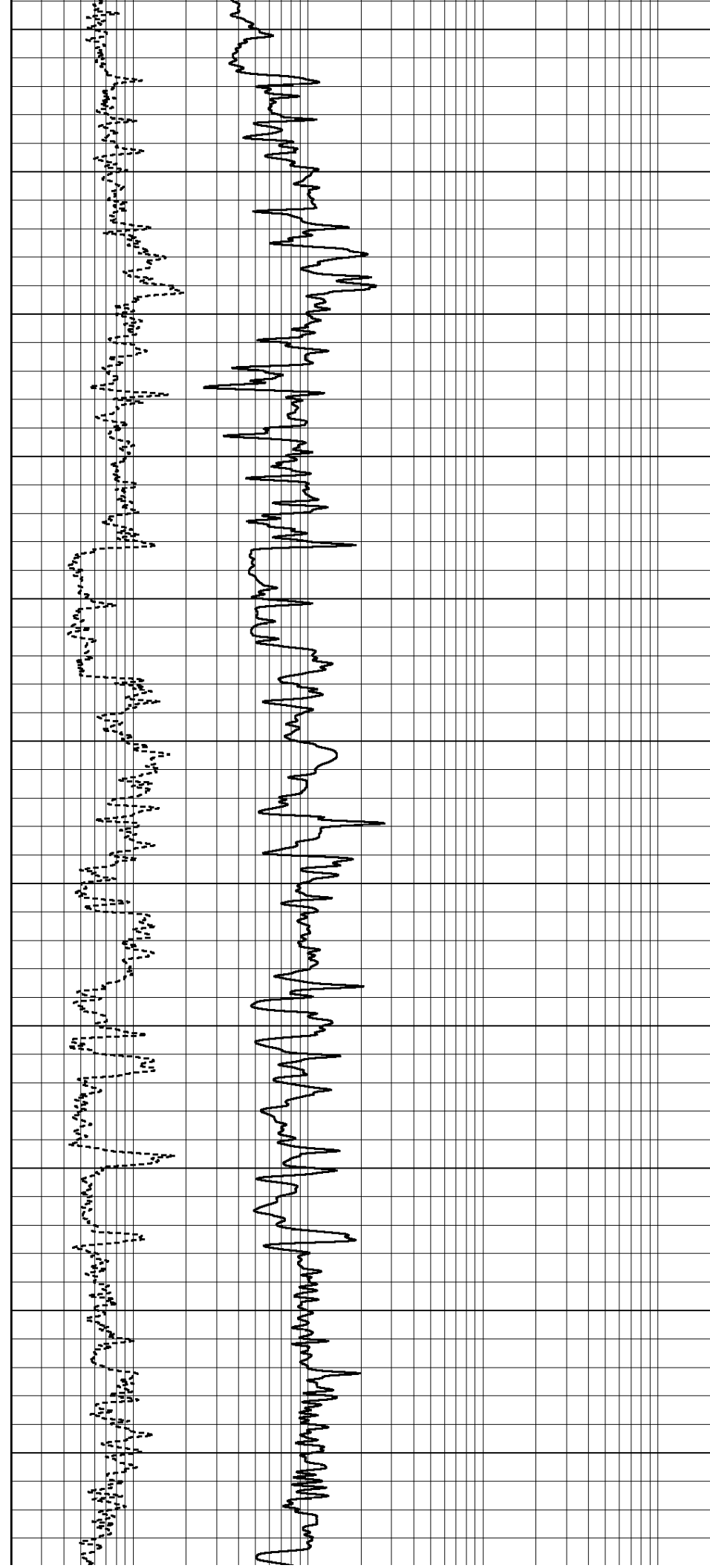
800

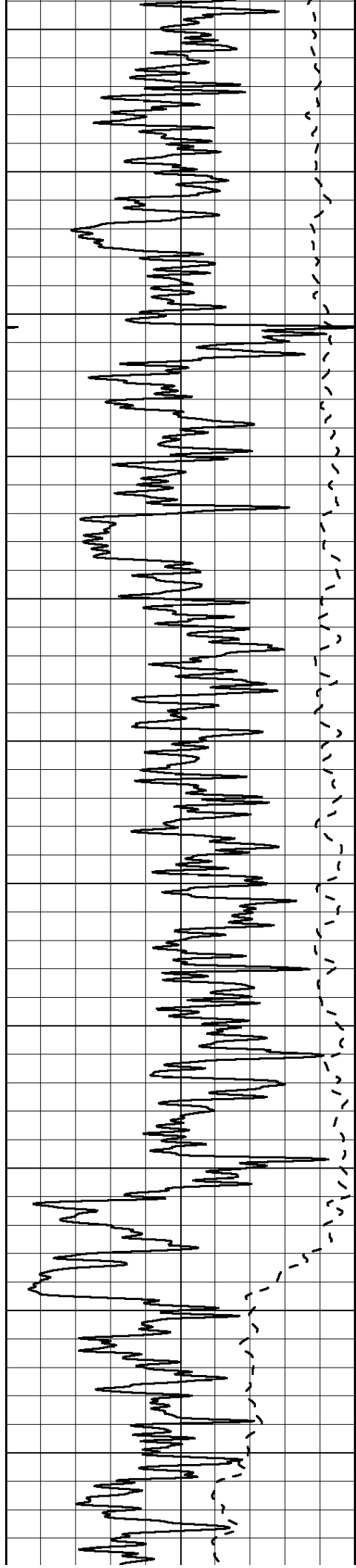
850

900

950

1000





1050

1100

1150

1200

1250

1300

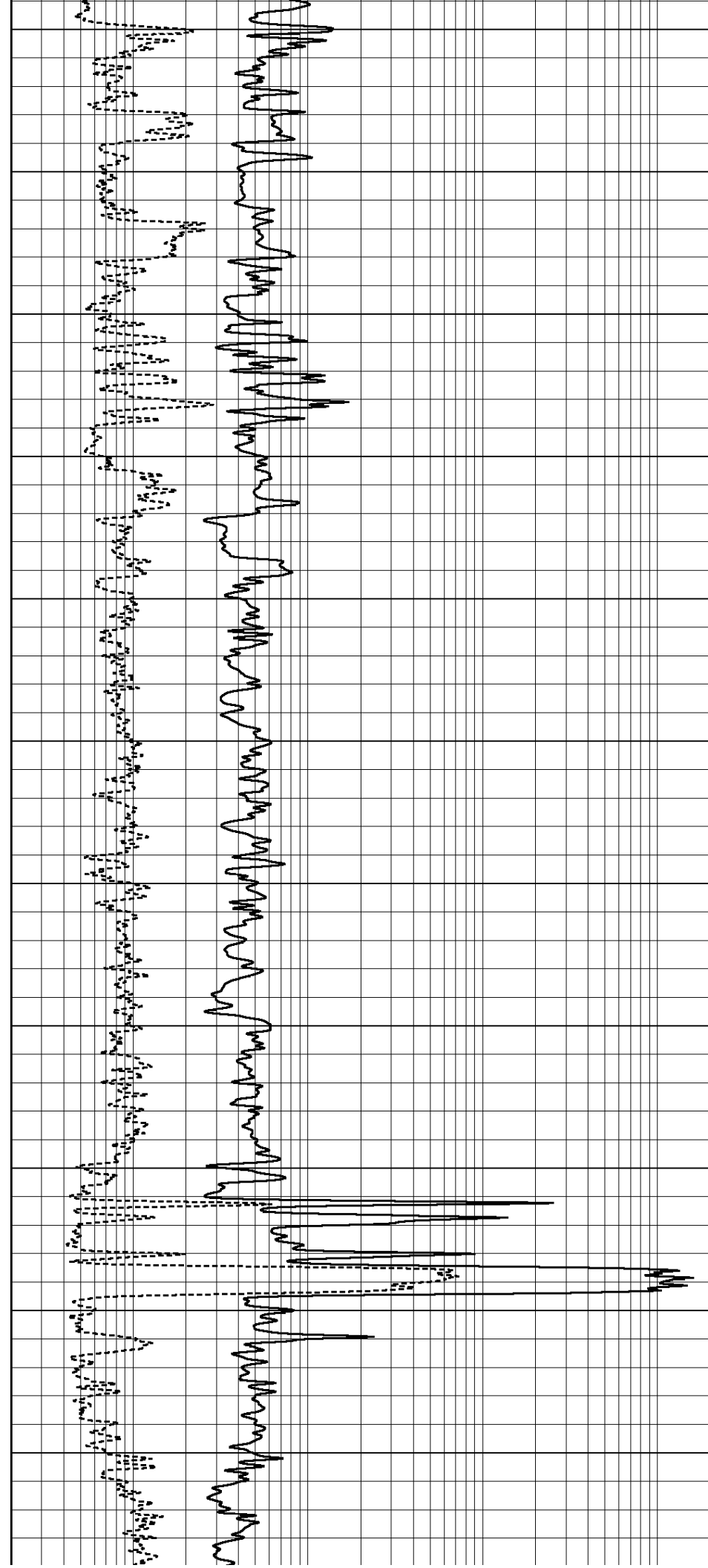
1350

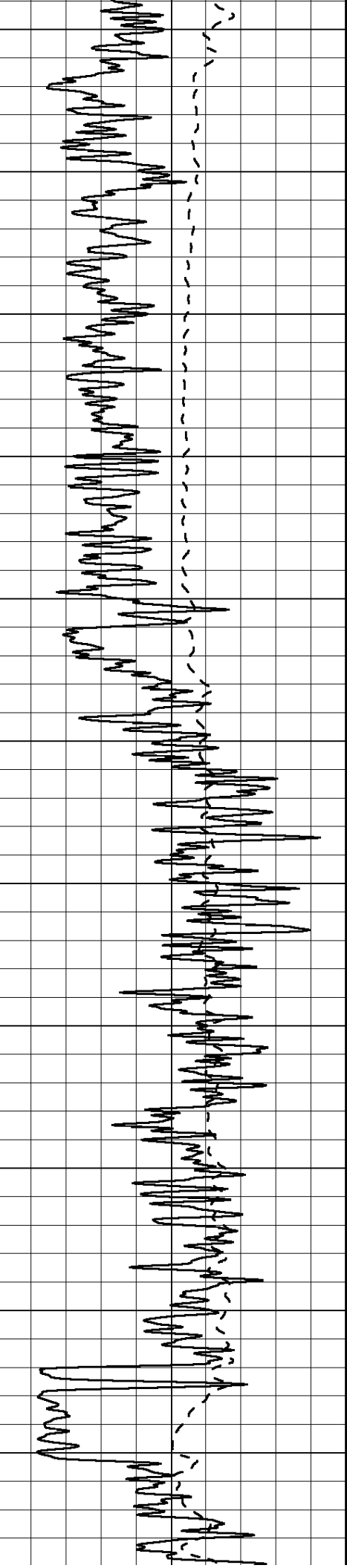
1400

1450

1500

1550





1600

1650

1700

1750

1800

1850

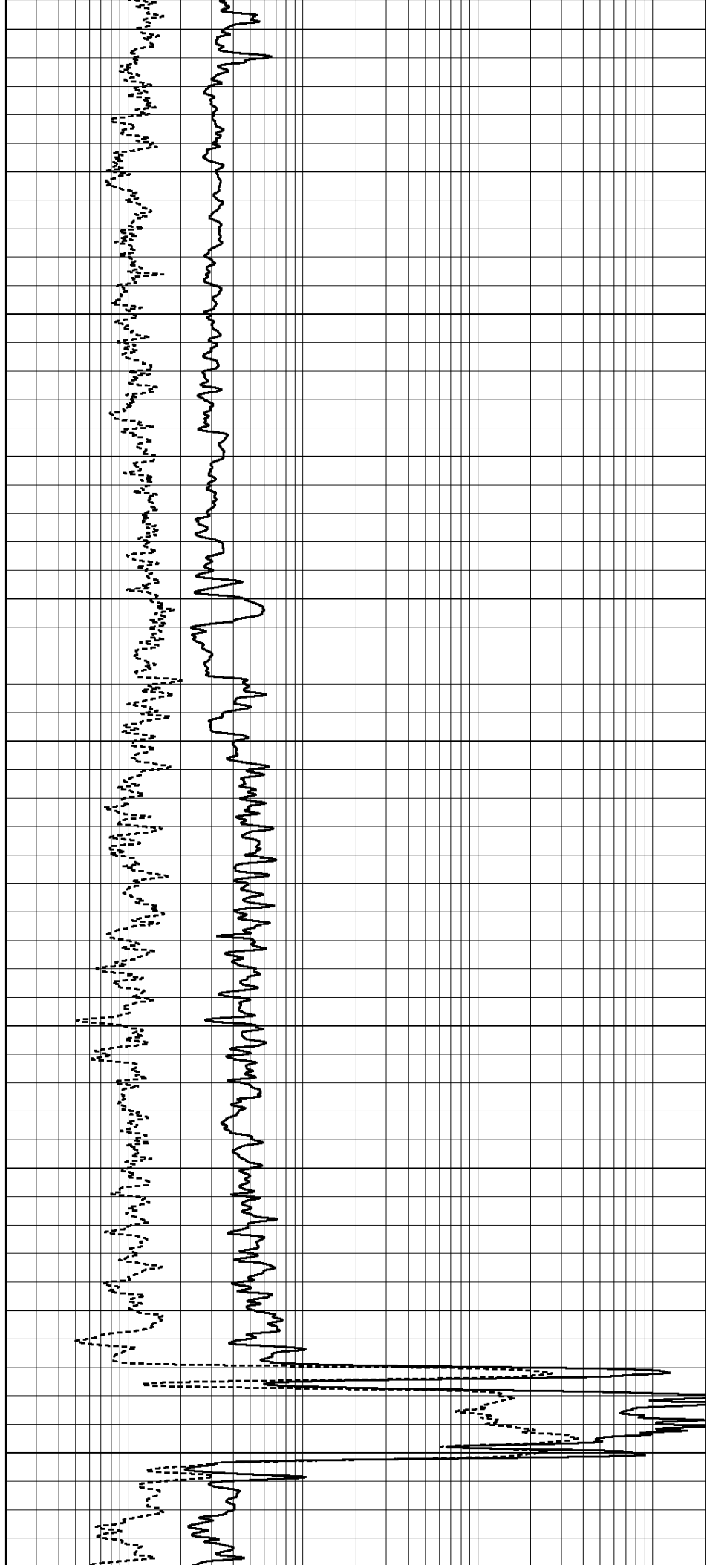
1900

1950

2000

2050

2100





2150

2200

2250

2300

2350

2400

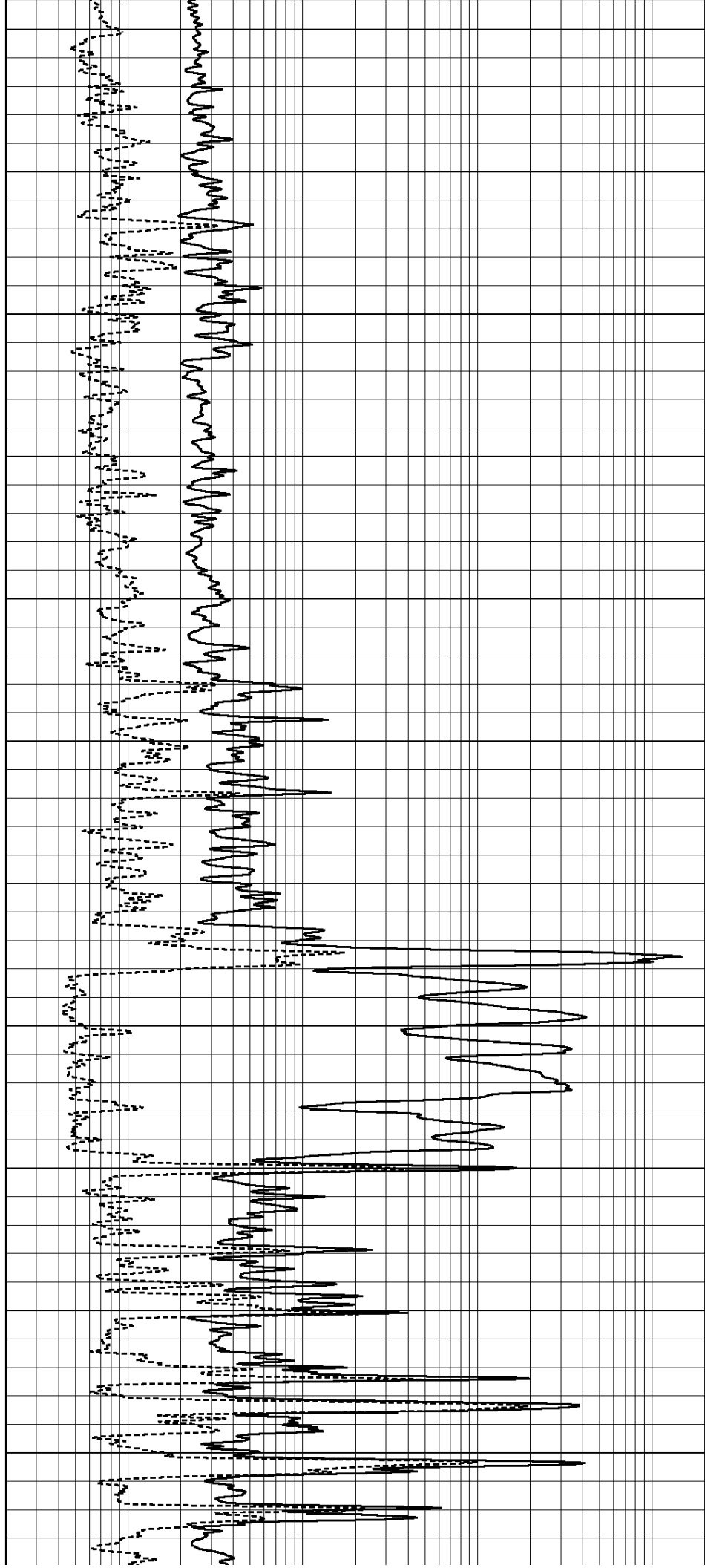
2450

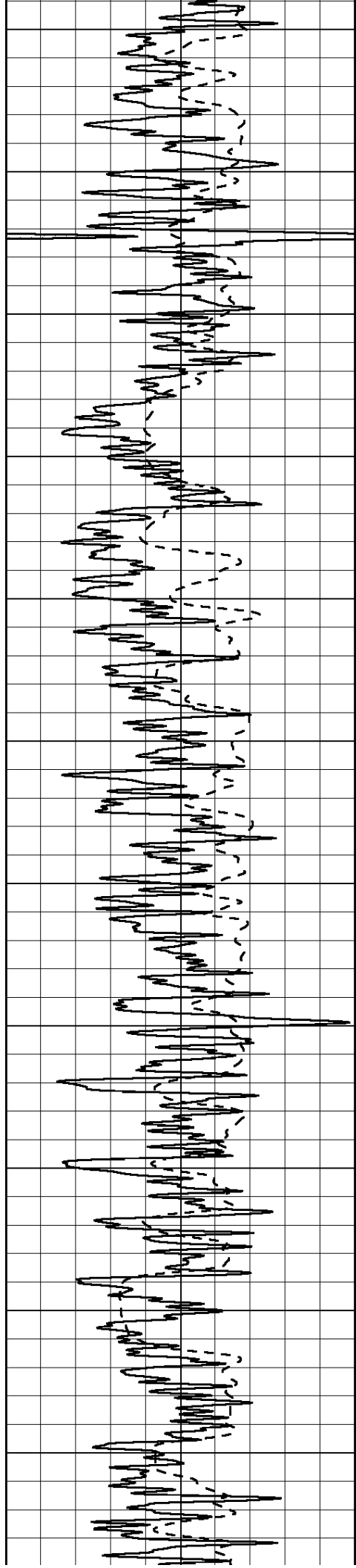
2500

2550

2600

2650





2700

2750

2800

2850

2900

2950

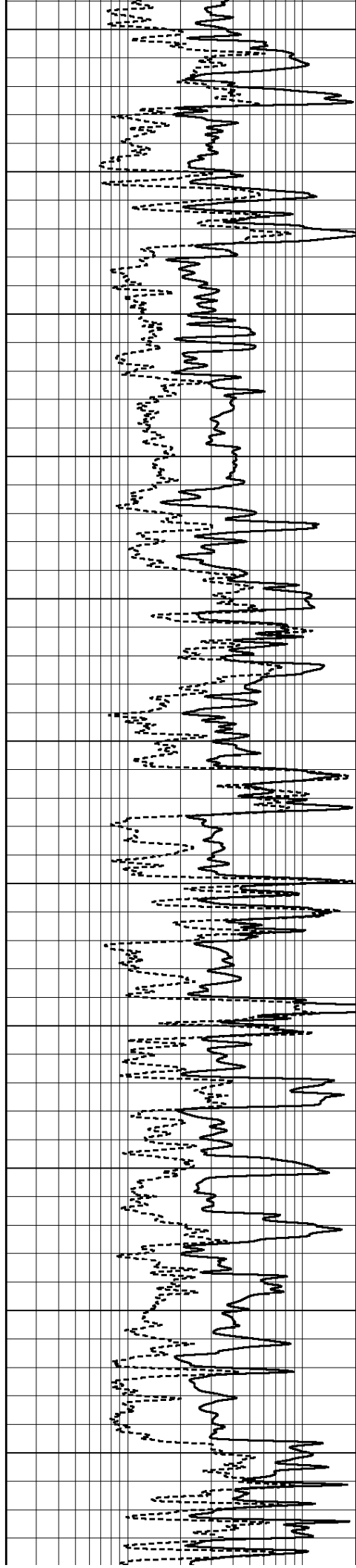
3000

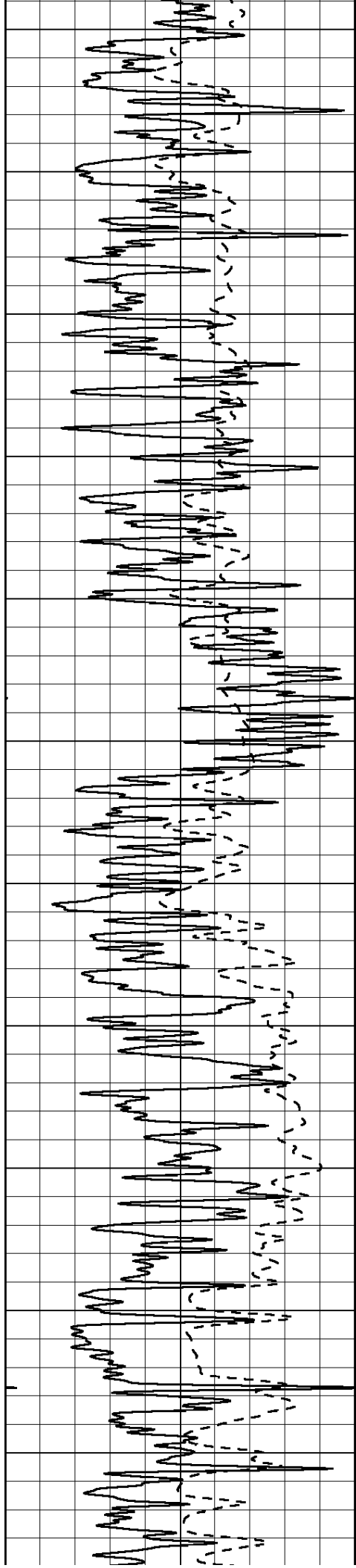
3050

3100

3150

3200





3250

3300

3350

3400

3450

3500

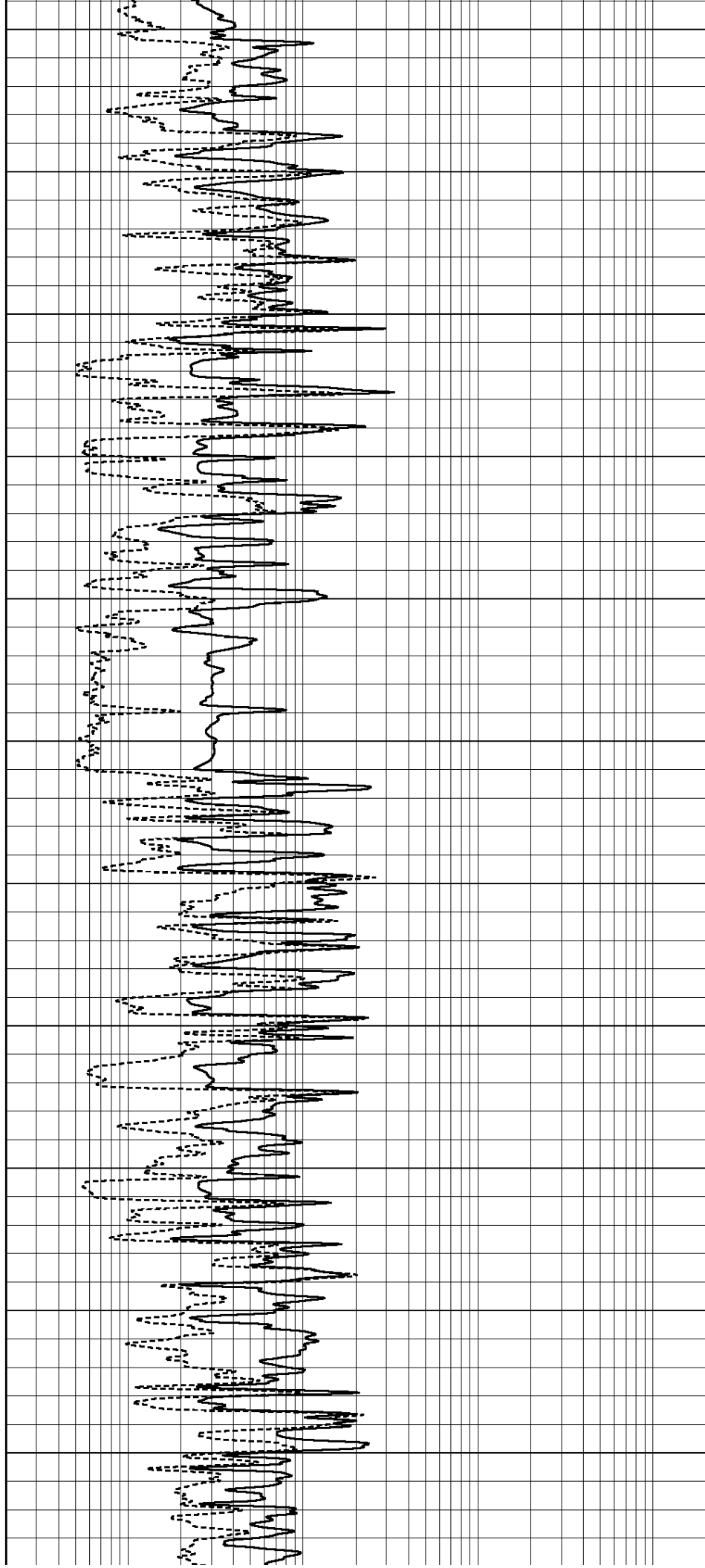
3550

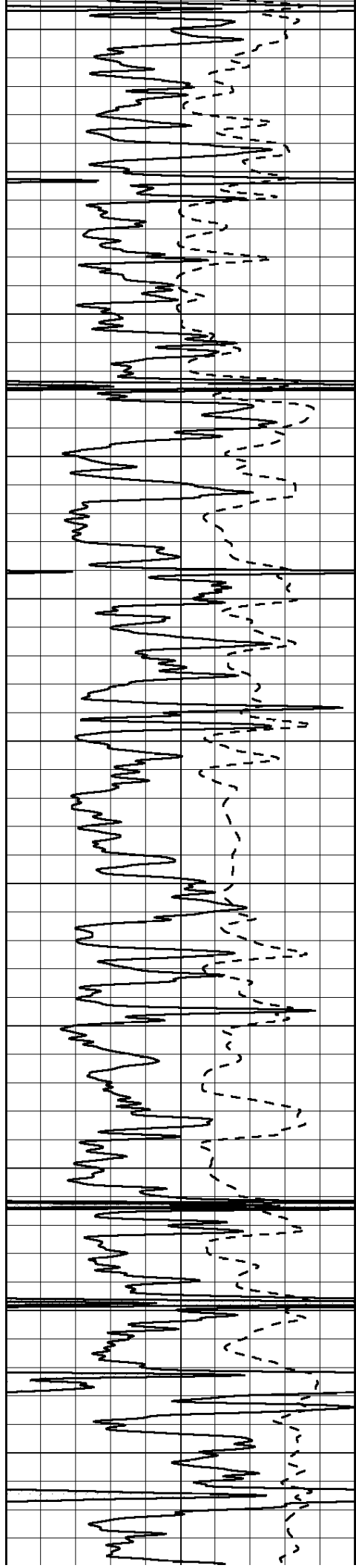
3600

3650

3700

3750





3800

3850

3900

3950

4000

4050

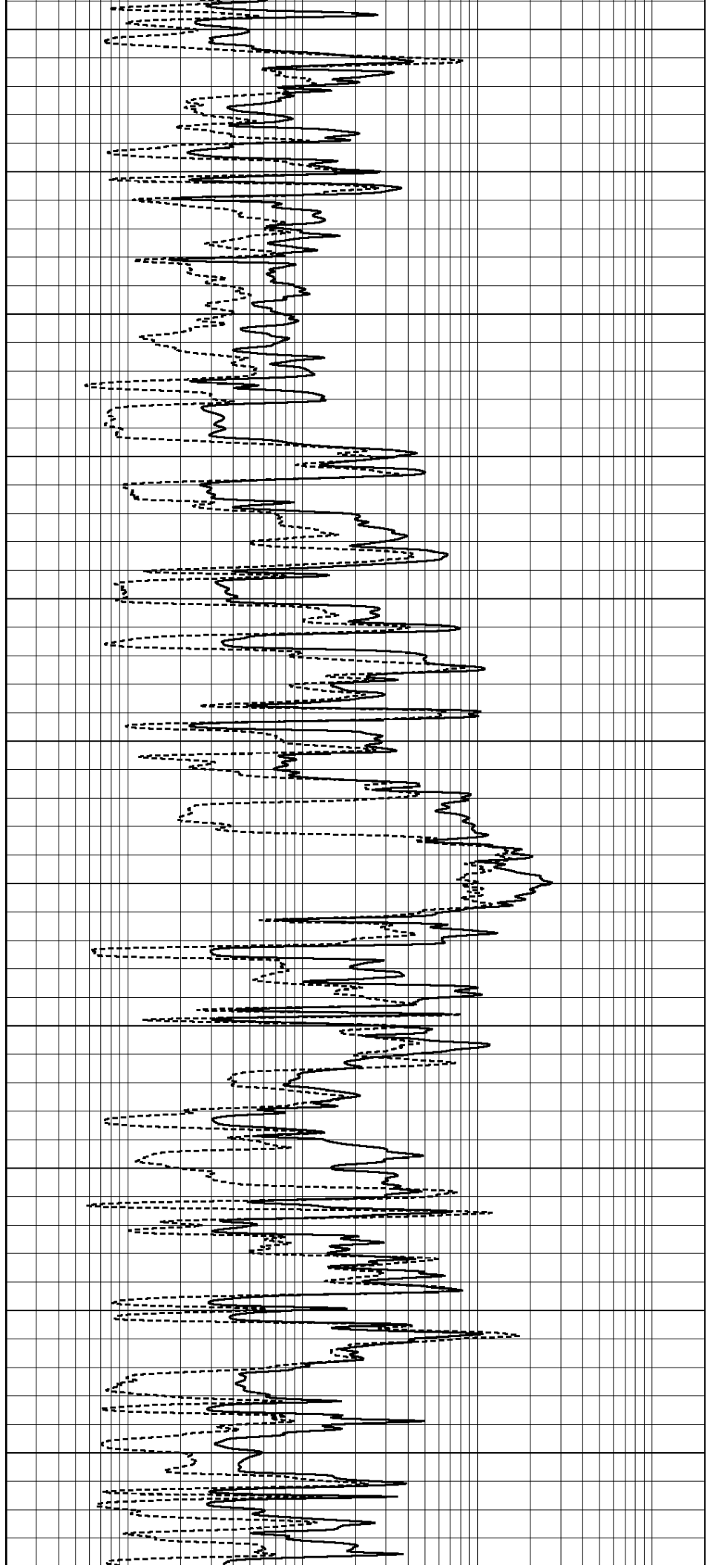
4100

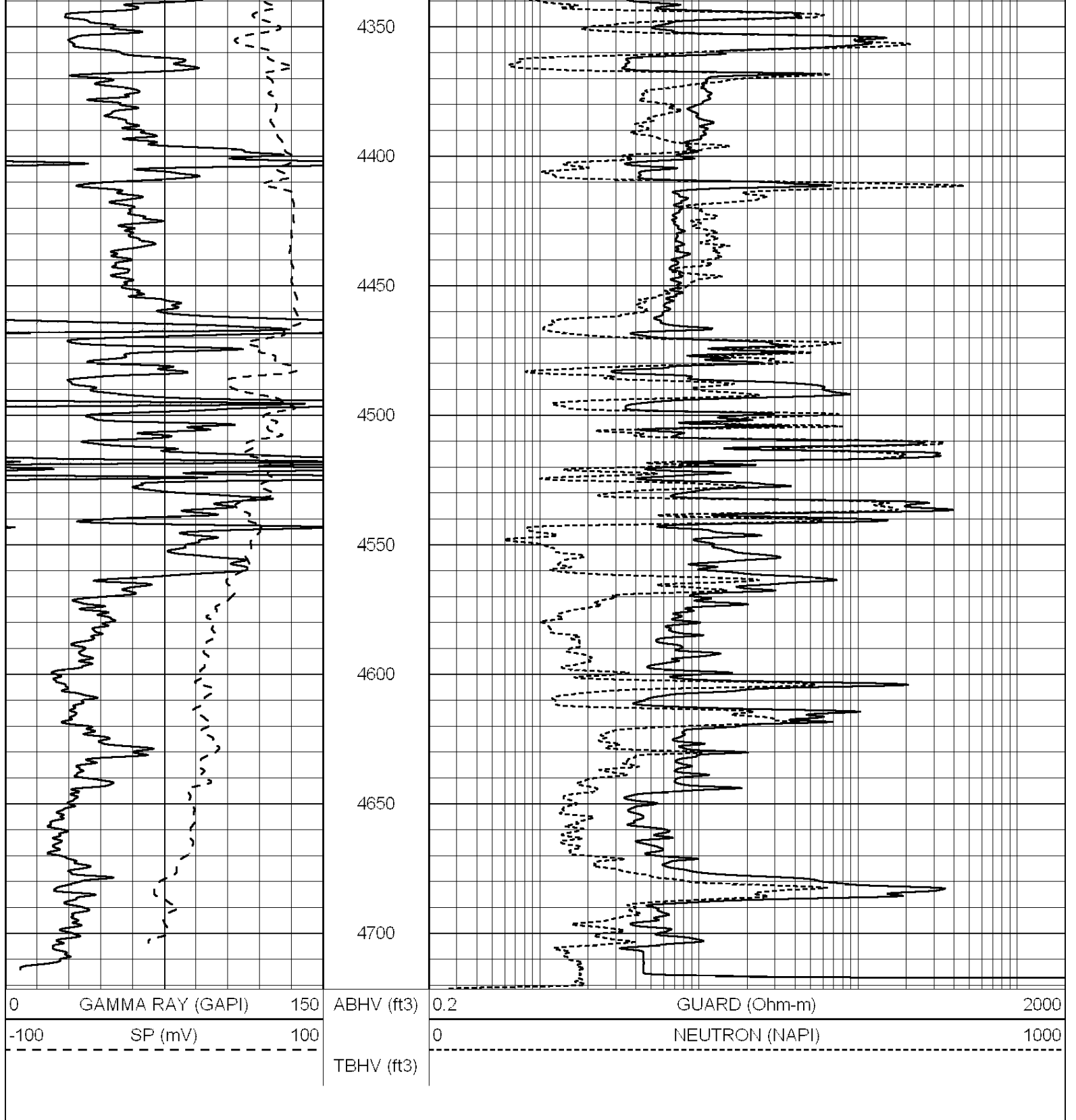
4150

4200

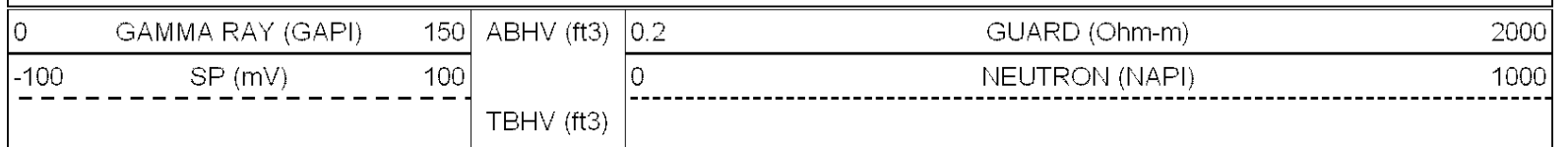
4250

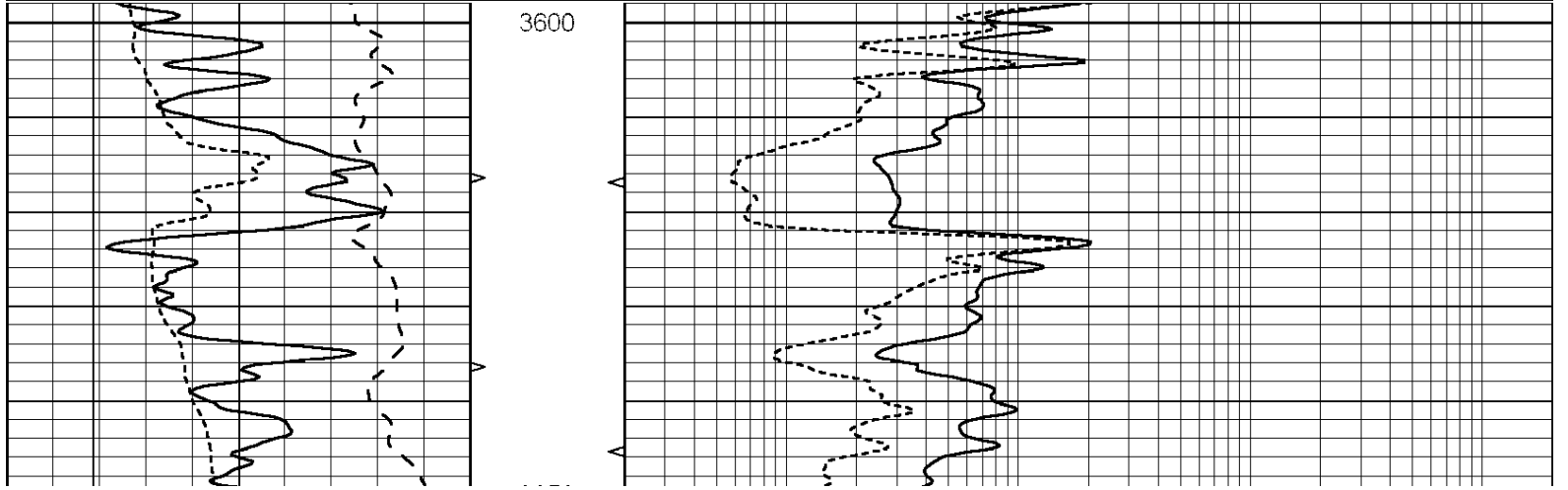
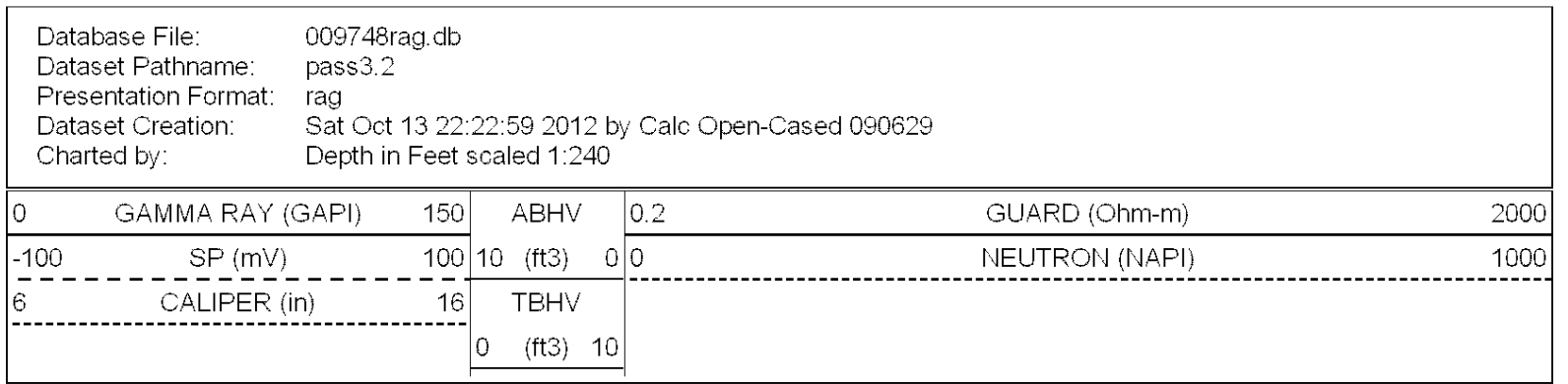
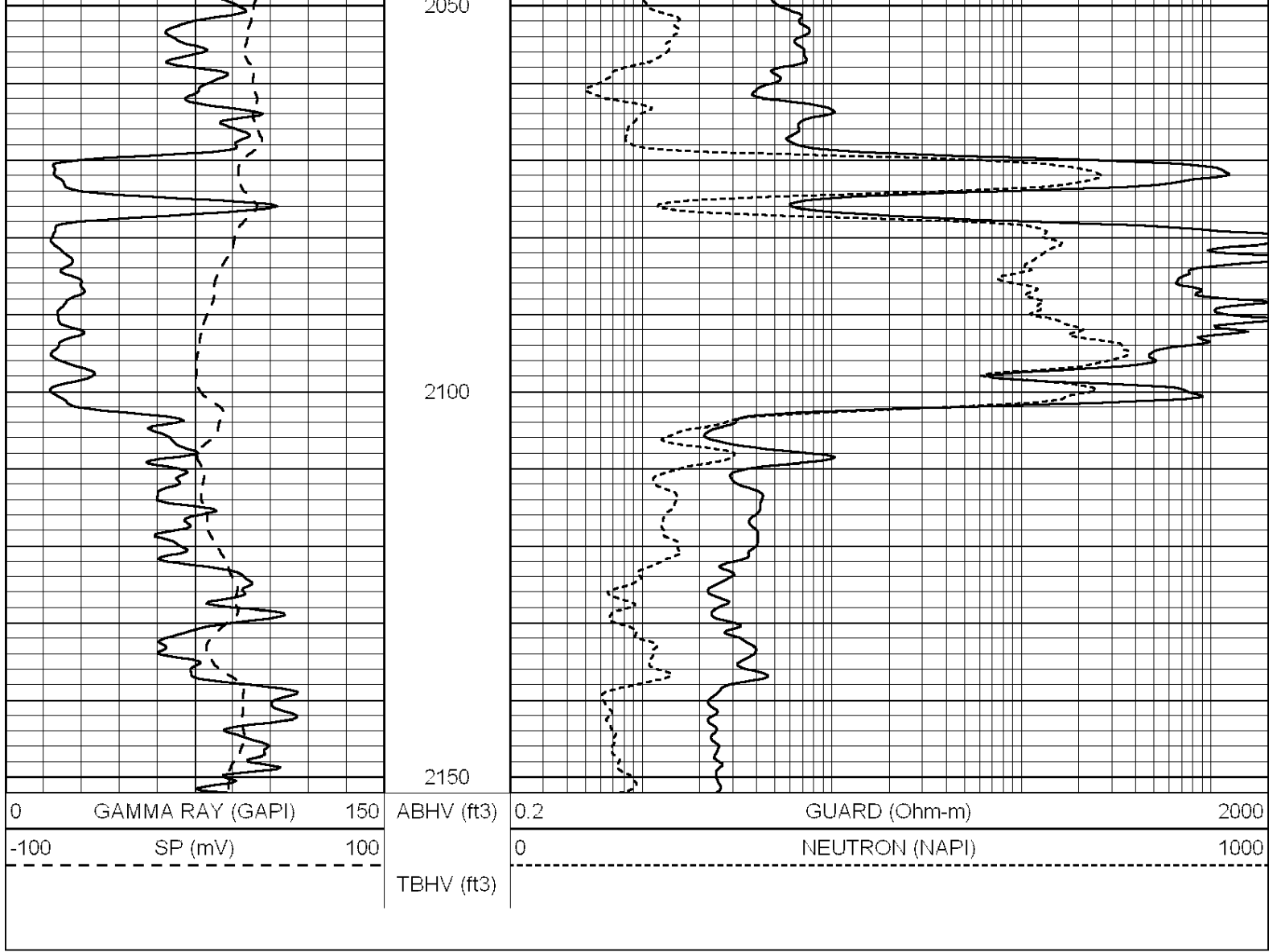
4300

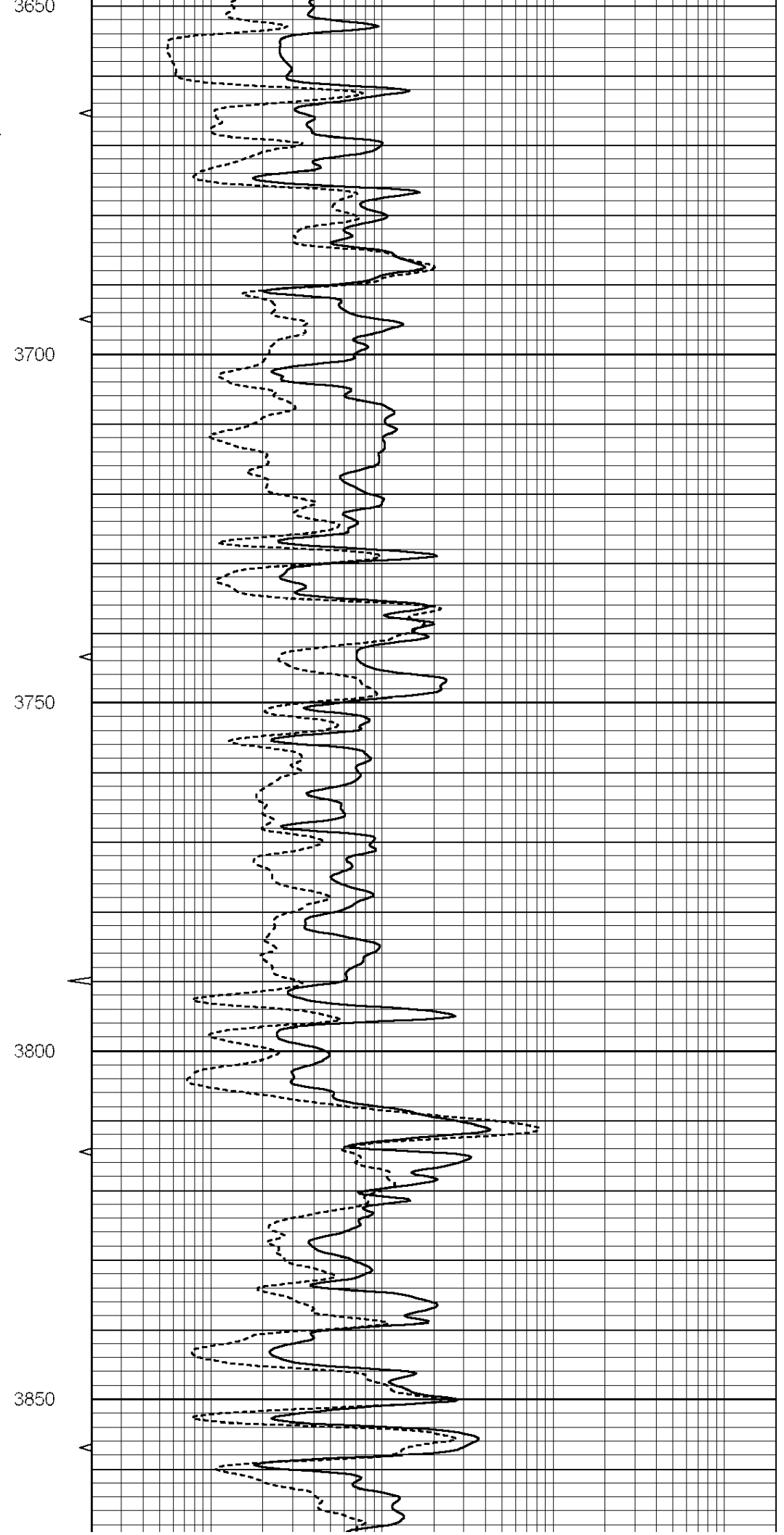
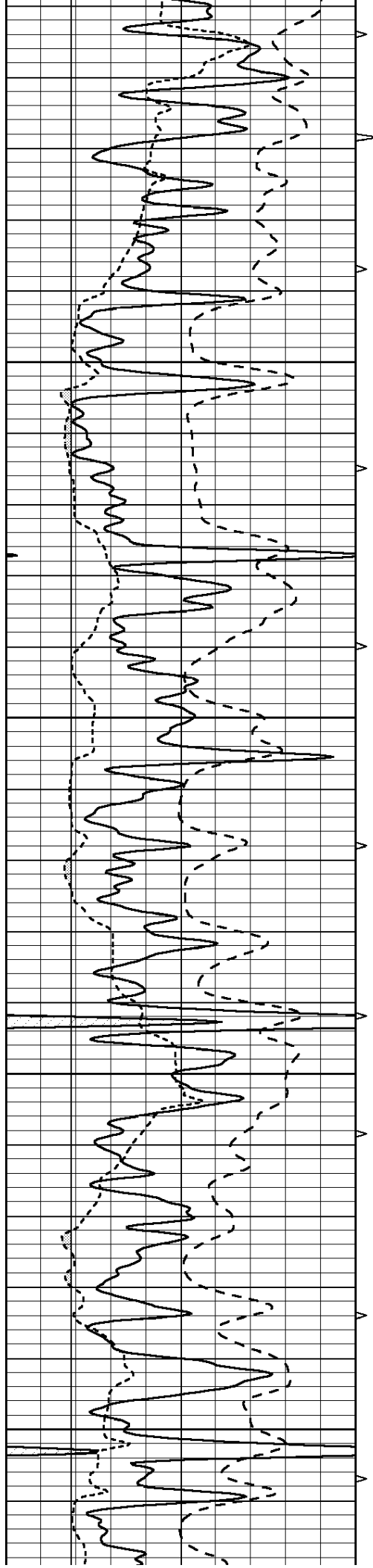


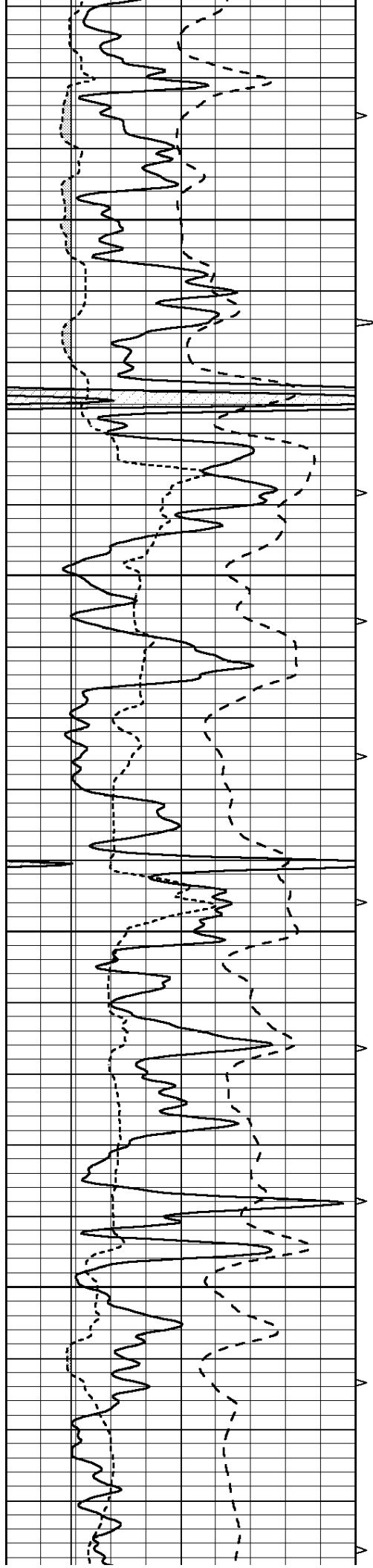


Database File: 009748rag.db
 Dataset Pathname: pass3.3
 Presentation Format: rag2
 Dataset Creation: Sat Oct 13 23:07:41 2012 by Calc Open-Cased 090629
 Charted by: Depth in Feet scaled 1:240







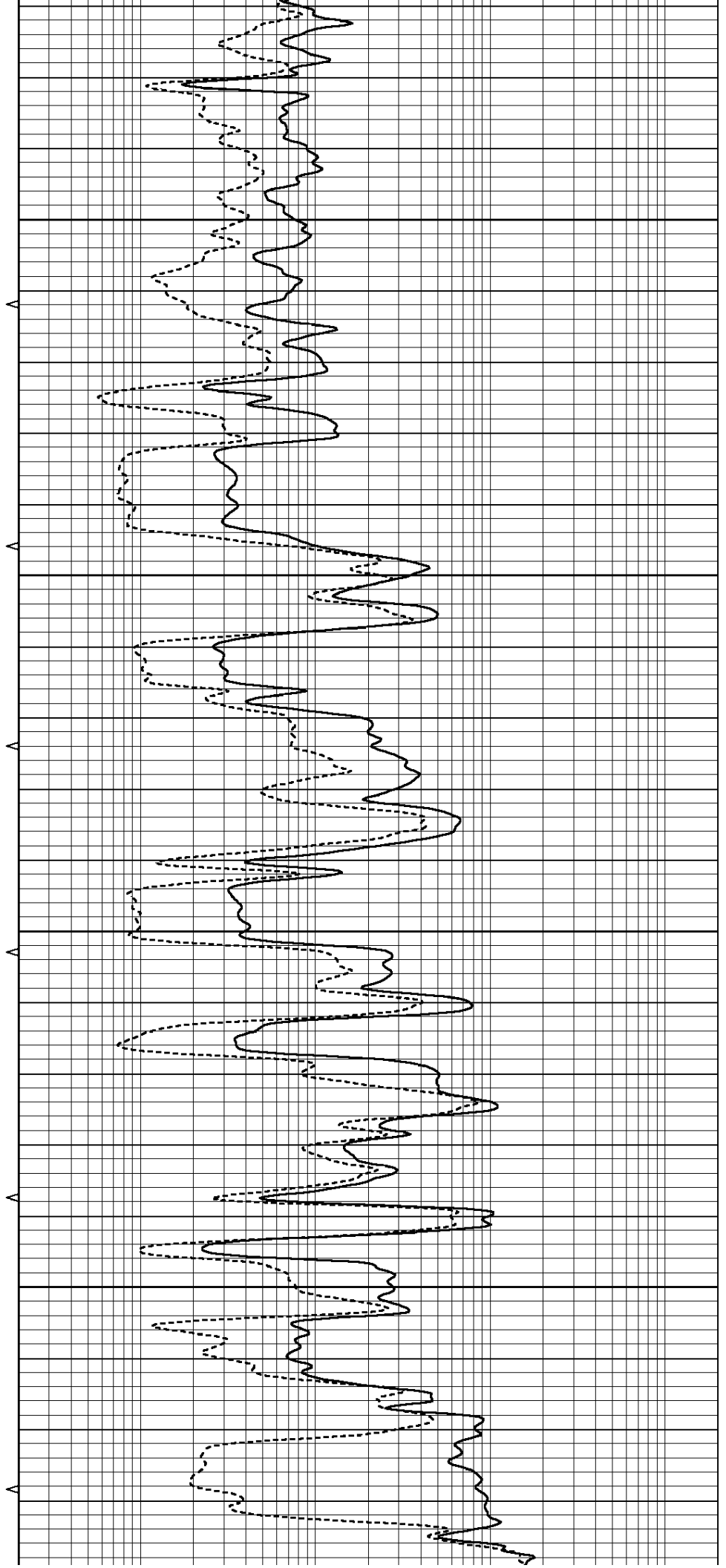


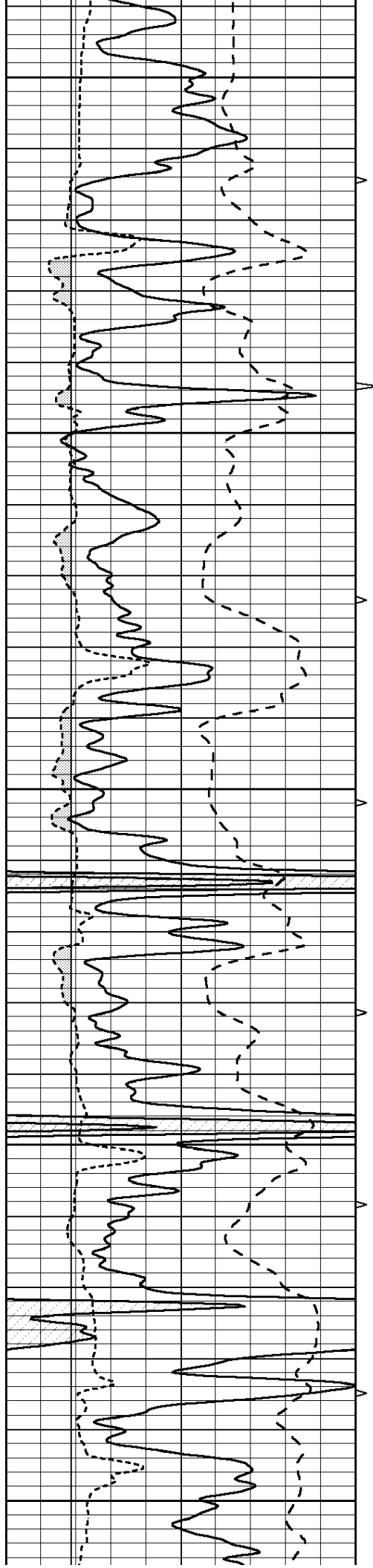
3900

3950

4000

4050





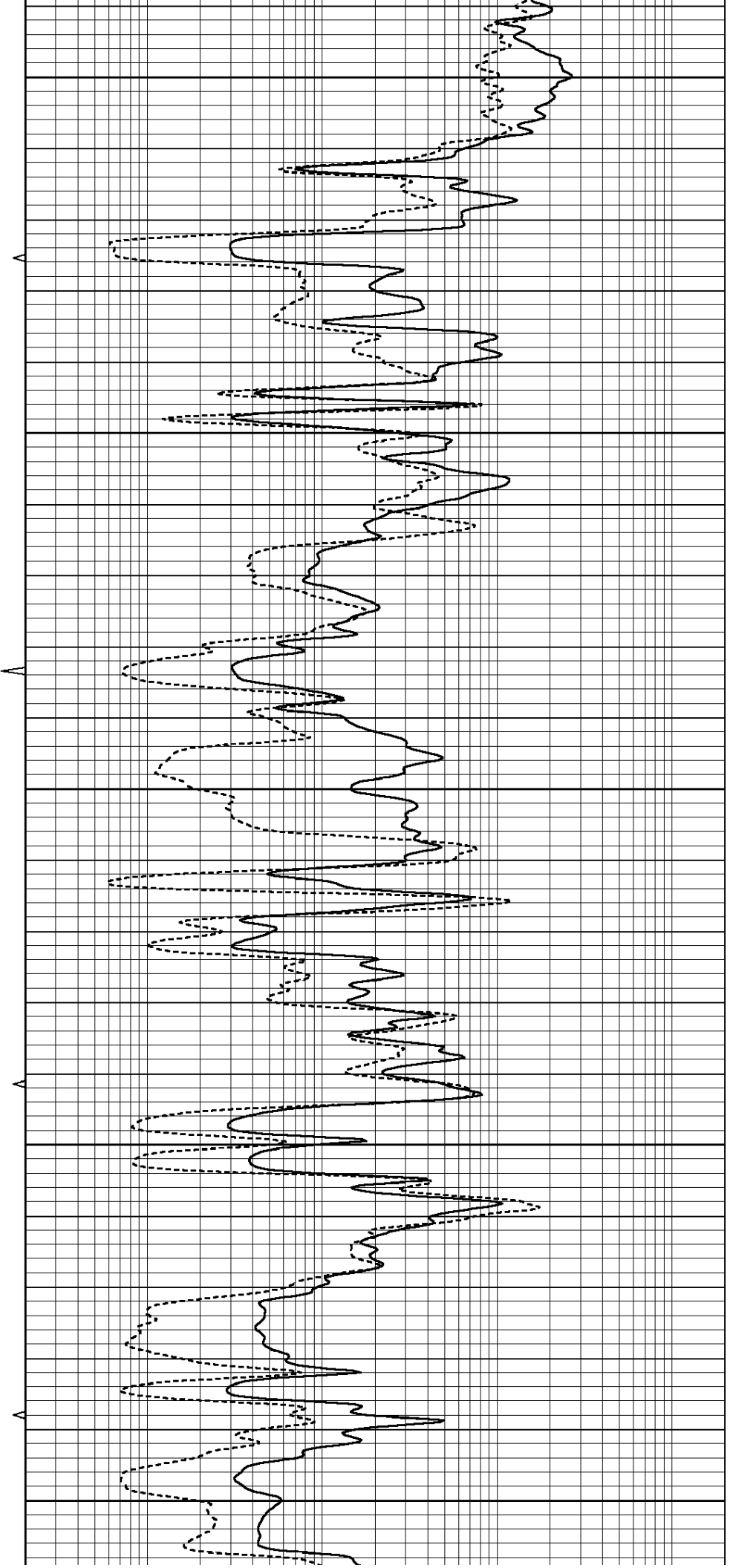
4100

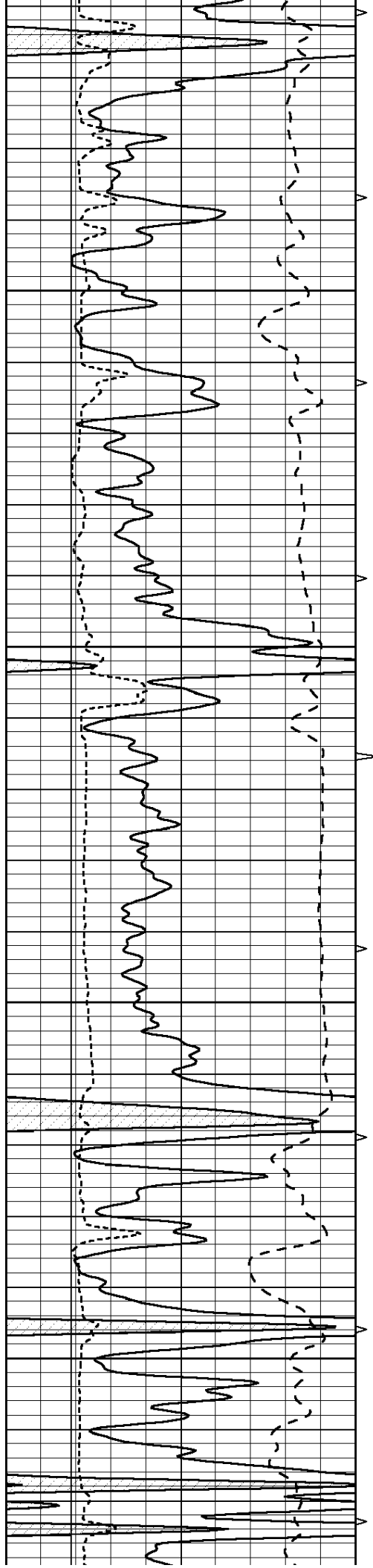
4150

4200

4250

4300



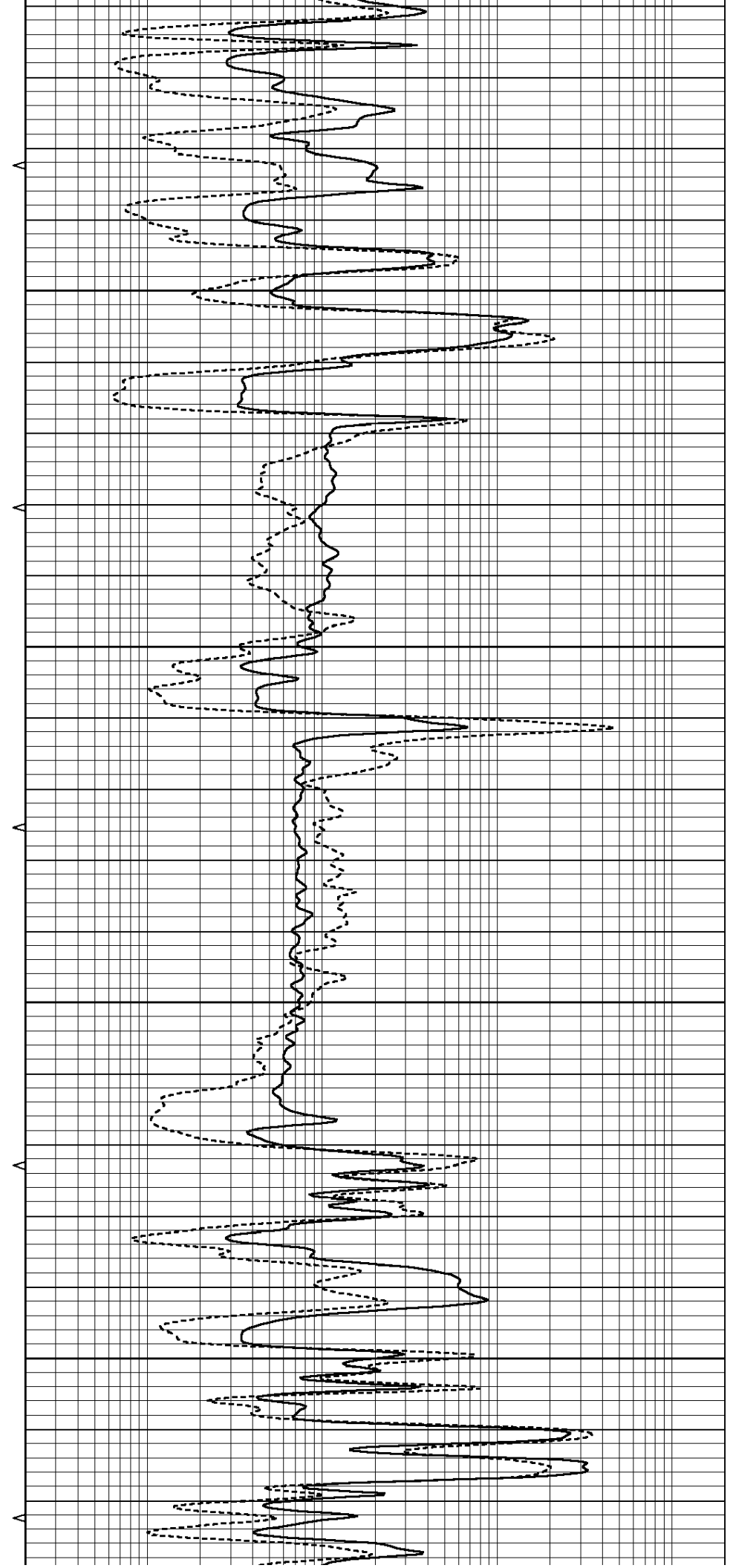


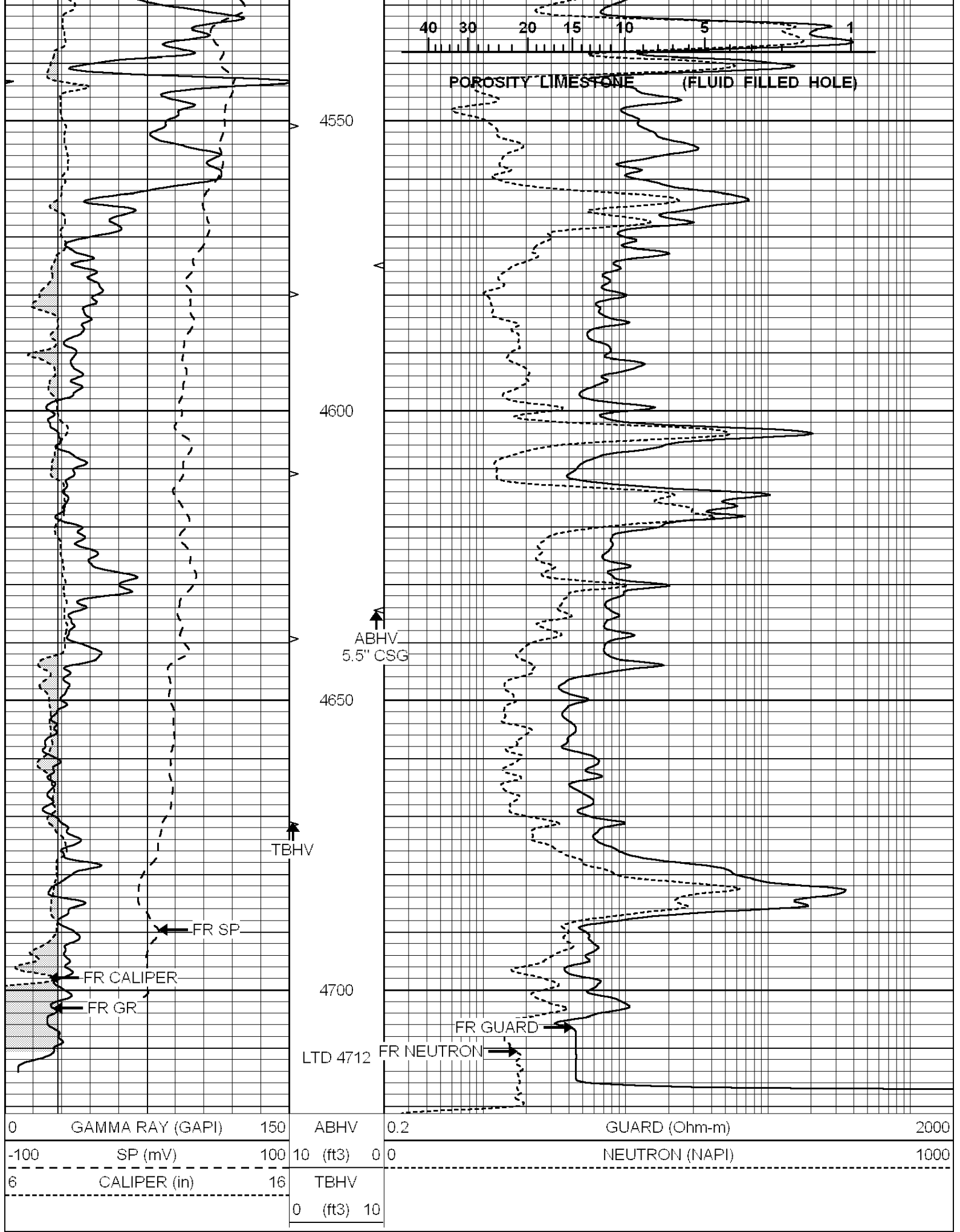
4350

4400

4450

4500

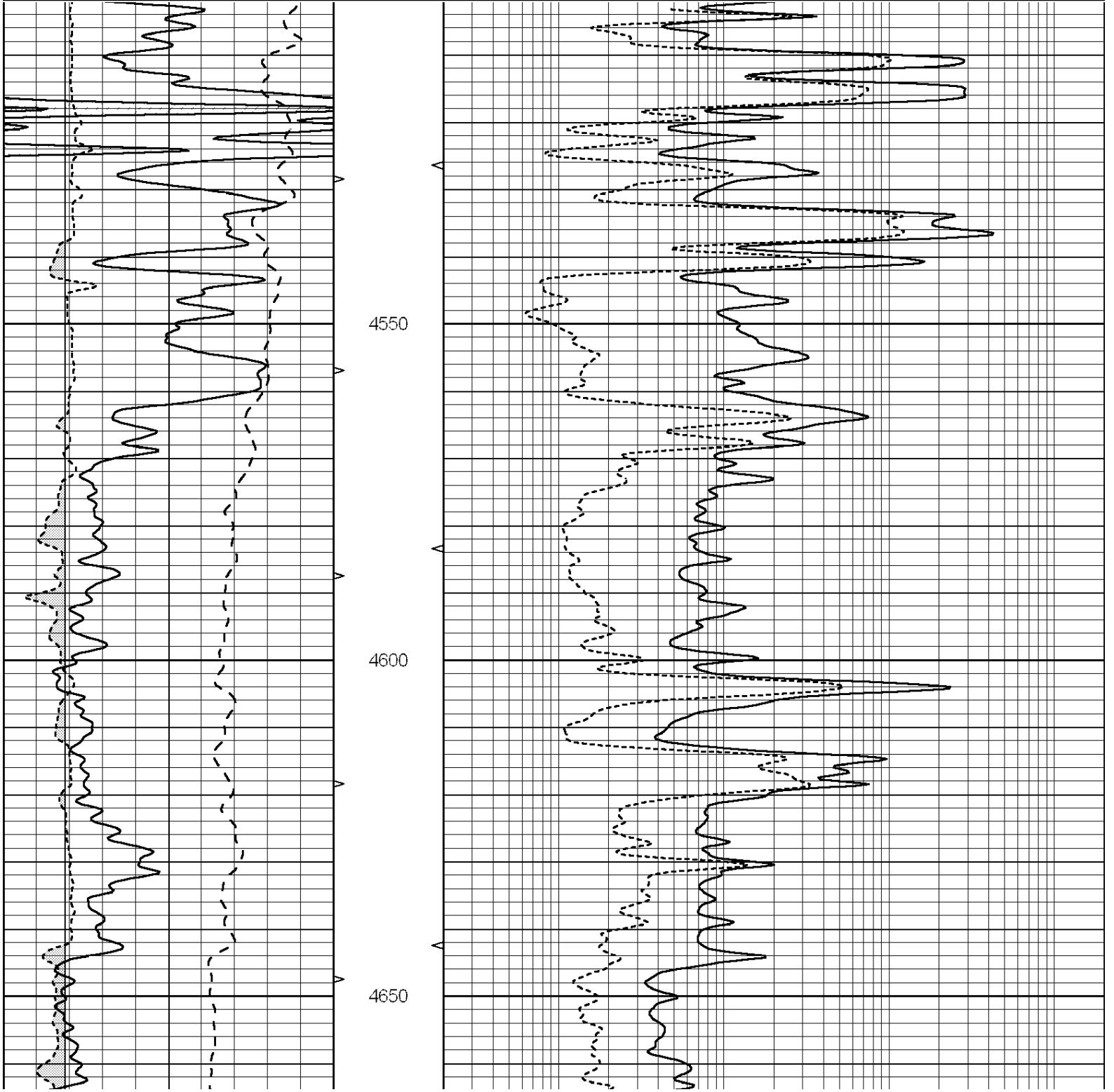


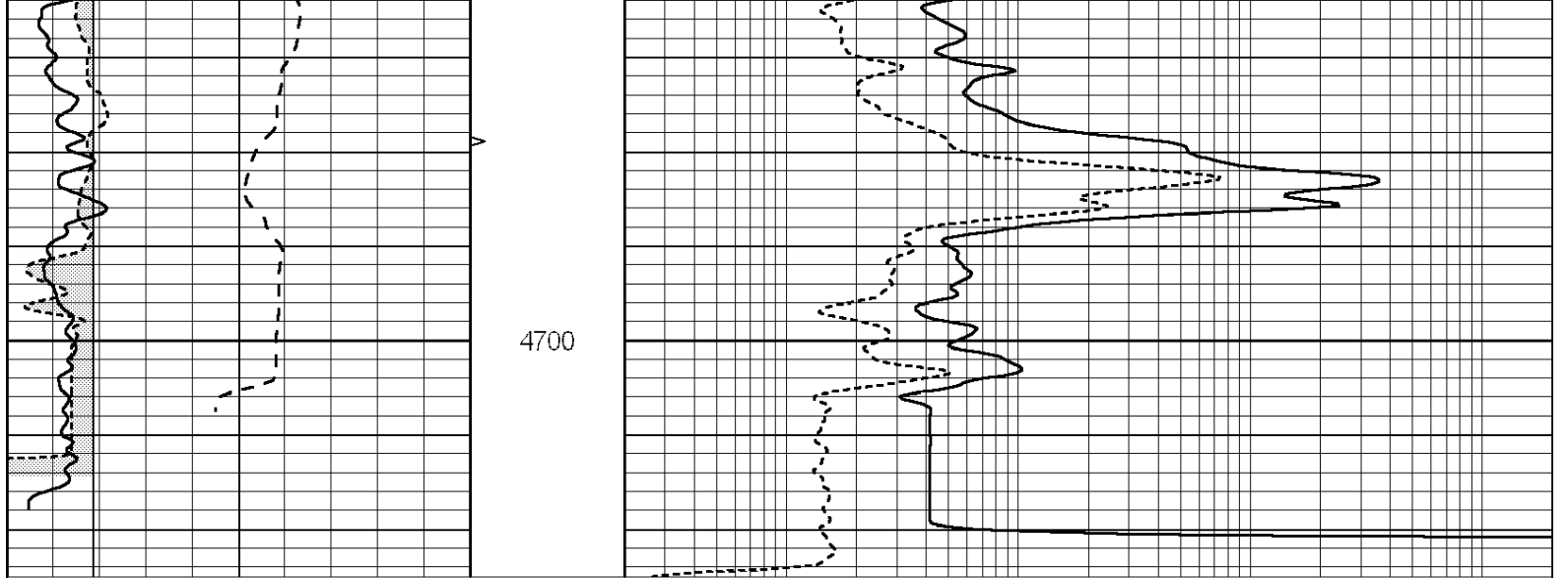


REPEAT SECTION

Database File: 009748rag.db
 Dataset Pathname: pass2.2
 Presentation Format: rag
 Dataset Creation: Sat Oct 13 22:28:19 2012 by Calc Open-Cased 090629
 Charted by: Depth in Feet scaled 1:240

0	GAMMA RAY (GAPI)	150	ABHV	0.2	GUARD (Ohm-m)	2000
-100	SP (mV)	100	10 (ft3)	0 0	NEUTRON (NAPI)	1000
6	CALIPER (in)	16	TBHV			
			0 (ft3)	10		





0	GAMMA RAY (GAPI)	150	ABHV	0.2	GUARD (Ohm-m)	2000
-100	SP (mV)	100	10 (ft3) 0 0	0	NEUTRON (NAPI)	1000
6	CALIPER (in)	16	TBHV			
			0 (ft3) 10			