

# LOG-TECH



DIGITAL LOG

(785) 625-3858

## Dual Compensated Porosity Log

API No. 15-047-21,607-00-00

Company **Murfin Drilling Company, Inc.**  
 Well **Hattrup #1-3**  
 Field **N/A**  
 County **Edwards** State **Kansas**

Location **2310' FSL & 1000' FWL**

Sec: **3** Twp: **24 S** Rge: **20 W**

Other Services  
DIL  
MEL/BHCS

Permanent Datum **Ground Level** Elevation **2274**  
 Log Measured From **Kelly Bushing** 11 Ft. Above Perm. Datum  
 Drilling Measured From **Kelly Bushing**

Elevation  
K.B. 2285  
D.F. G.L. 2274

Date	7/01/2012
Run Number	One
Type Log	CNL / CDL
Depth Driller	4930
Depth Logger	4930
Bottom Logged Interval	4909
Top Logged Interval	3200
Type Fluid In Hole	Chemical
Salinity, PPM CL	8,000
Density	9.4
Level	Full
Max. Rec. Temp. F	127
Operating Rig Time	5 1/2 Hours
Equipment -- Location	91 Hays
Recorded By	K. Bange
Witnessed By	Robert Hendrix

Borehole Record		Casing Record				
Run No	Bit From	To	Size	Wgt.	From	To
One	12.25	00	380	8.625	23#	00
Two	7.875	380	TD			380

<<< Fold Here >>>

All interpretations are opinions based on inferences from electrical or other measurements and we cannot and do not guarantee the accuracy or correctness of any interpretation, and we shall not, except in the case of gross or willful negligence on our part, be liable or responsible for any loss, costs, damages, or expenses incurred or sustained by anyone resulting from any interpretation made by any of our officers, agents or employees. These interpretations are also subject to our general terms and conditions set out in our current Price Schedule.

### Comments

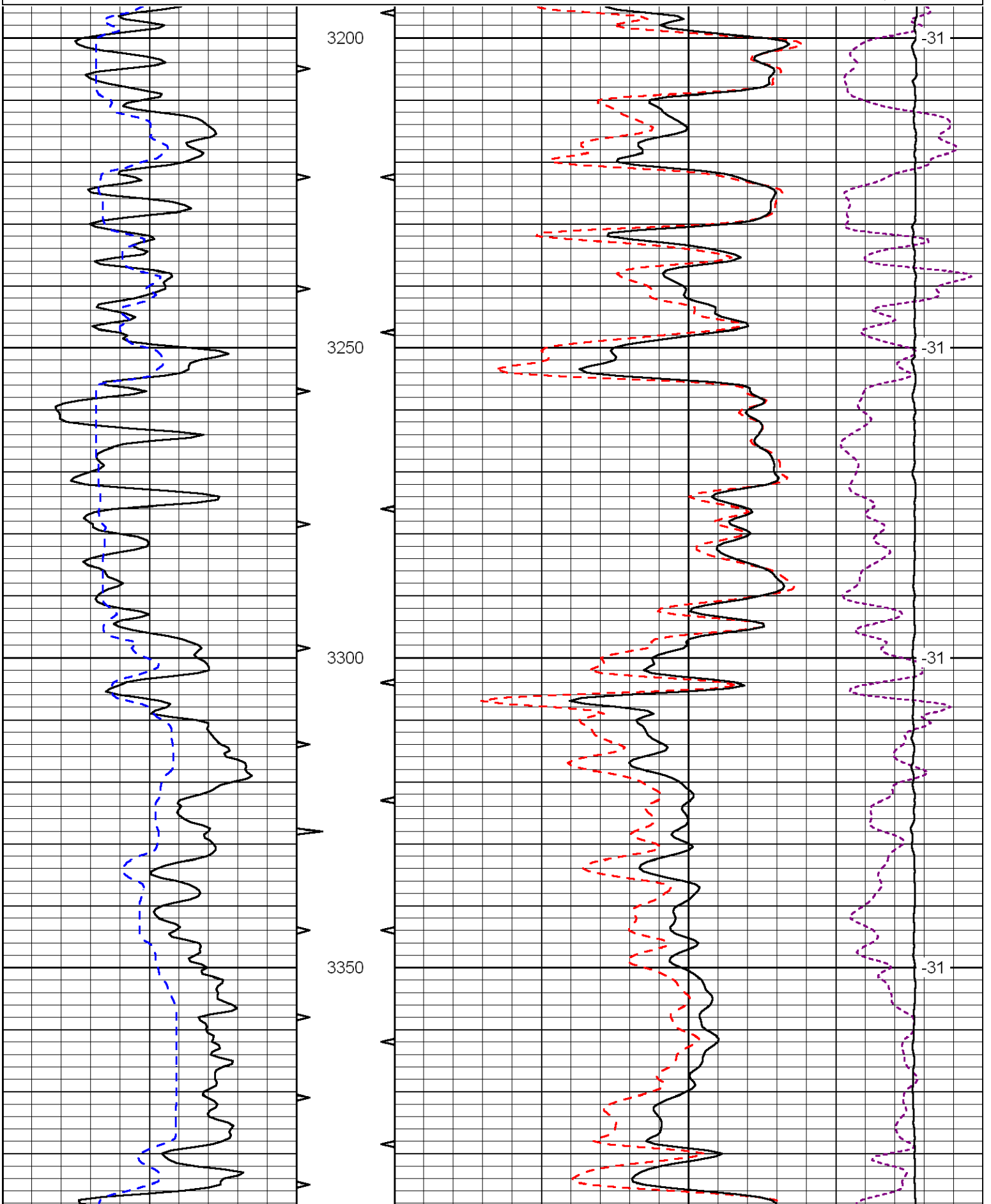
Thank you for using Log-Tech, Inc.  
 (785) 625-3858

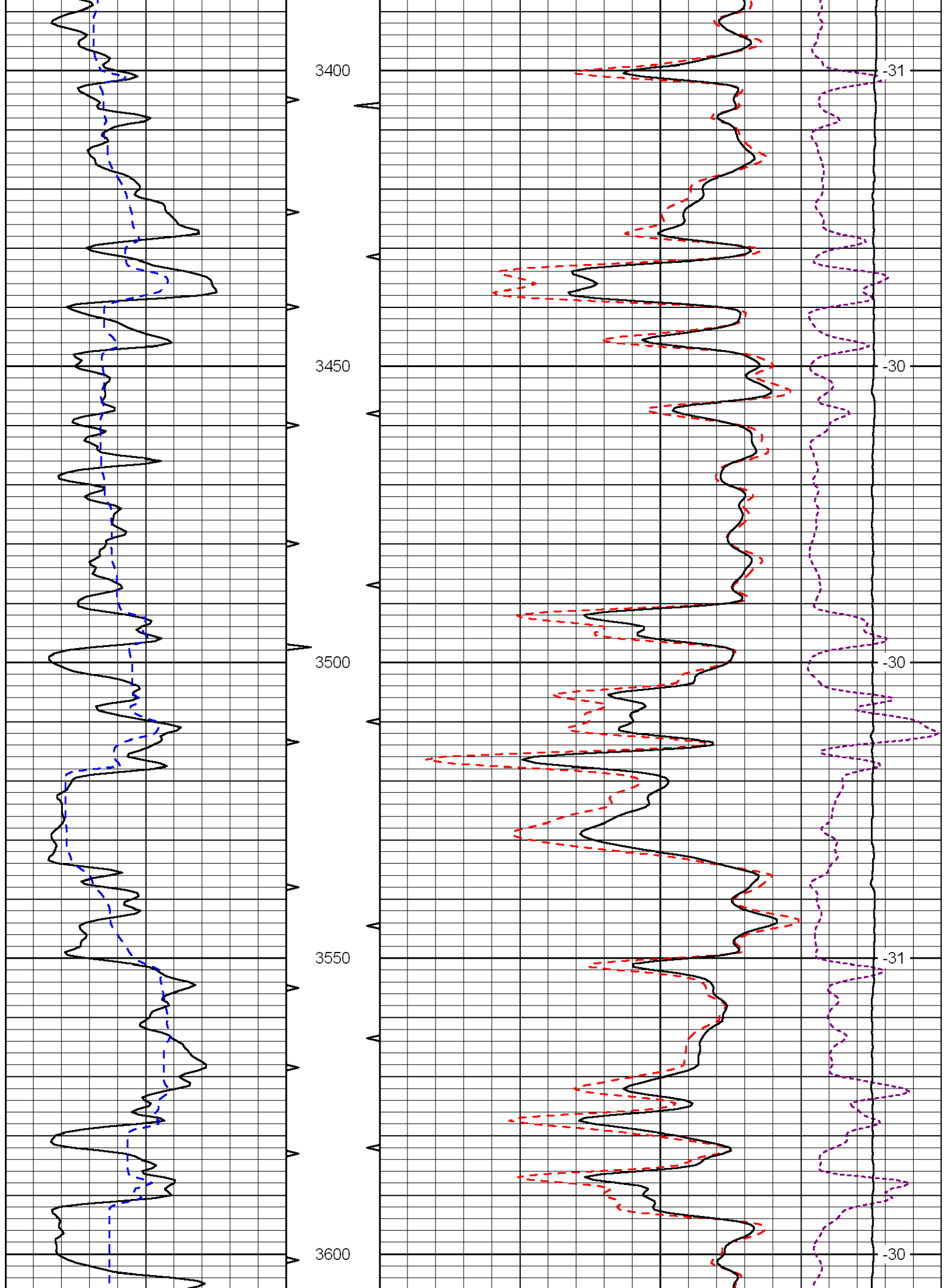
Offerle, 1/2 E to 40th rd,  
 6 N to H rd, 1/2 N,  
 E into

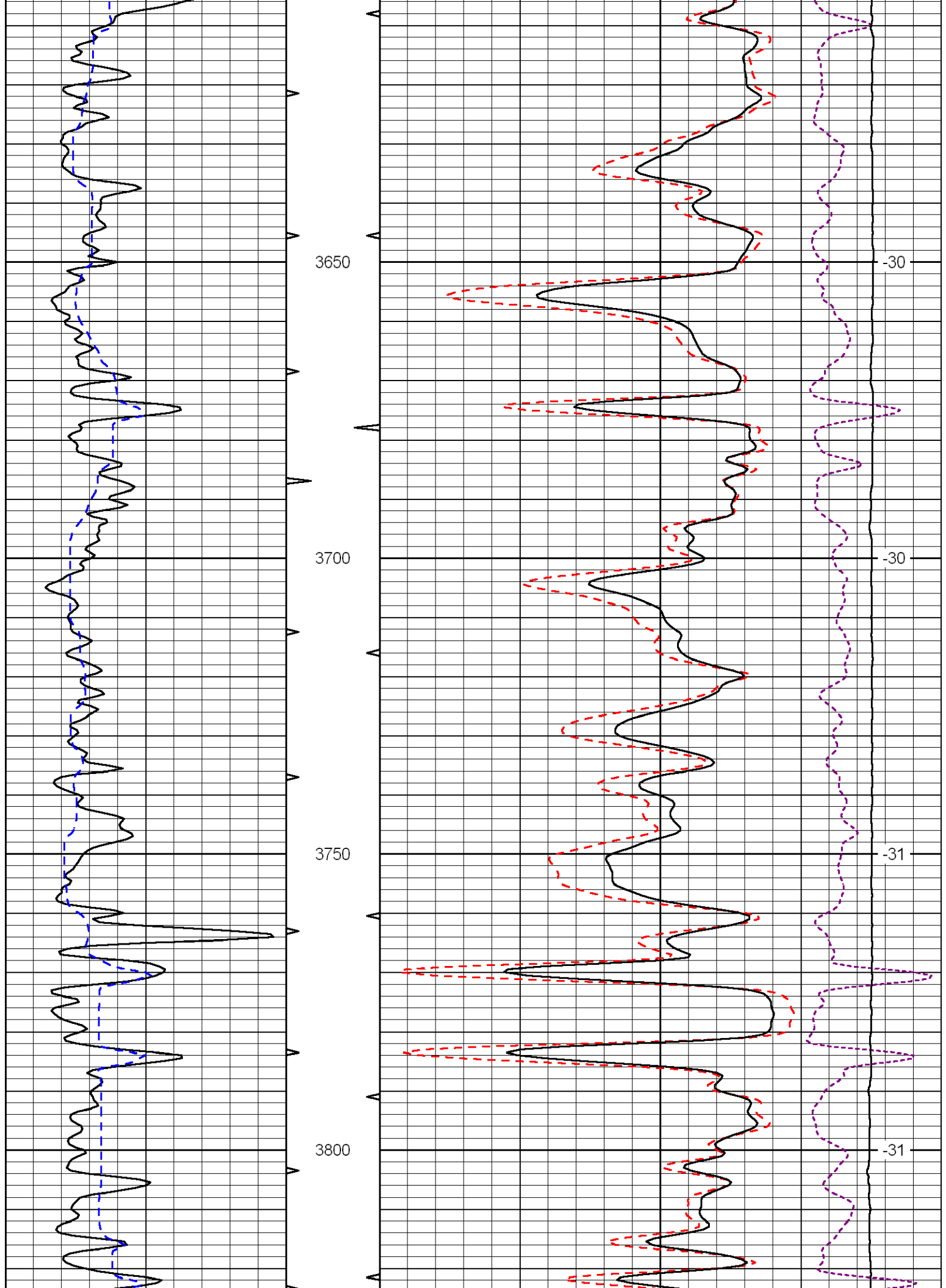
Database File: murfin070112hd.db  
 Dataset Pathname: dil/murfnstack  
 Presentation Format: cdl  
 Dataset Creation: Sun Jul 01 11:41:53 2012  
 Charted by: Depth in Feet scaled 1:240

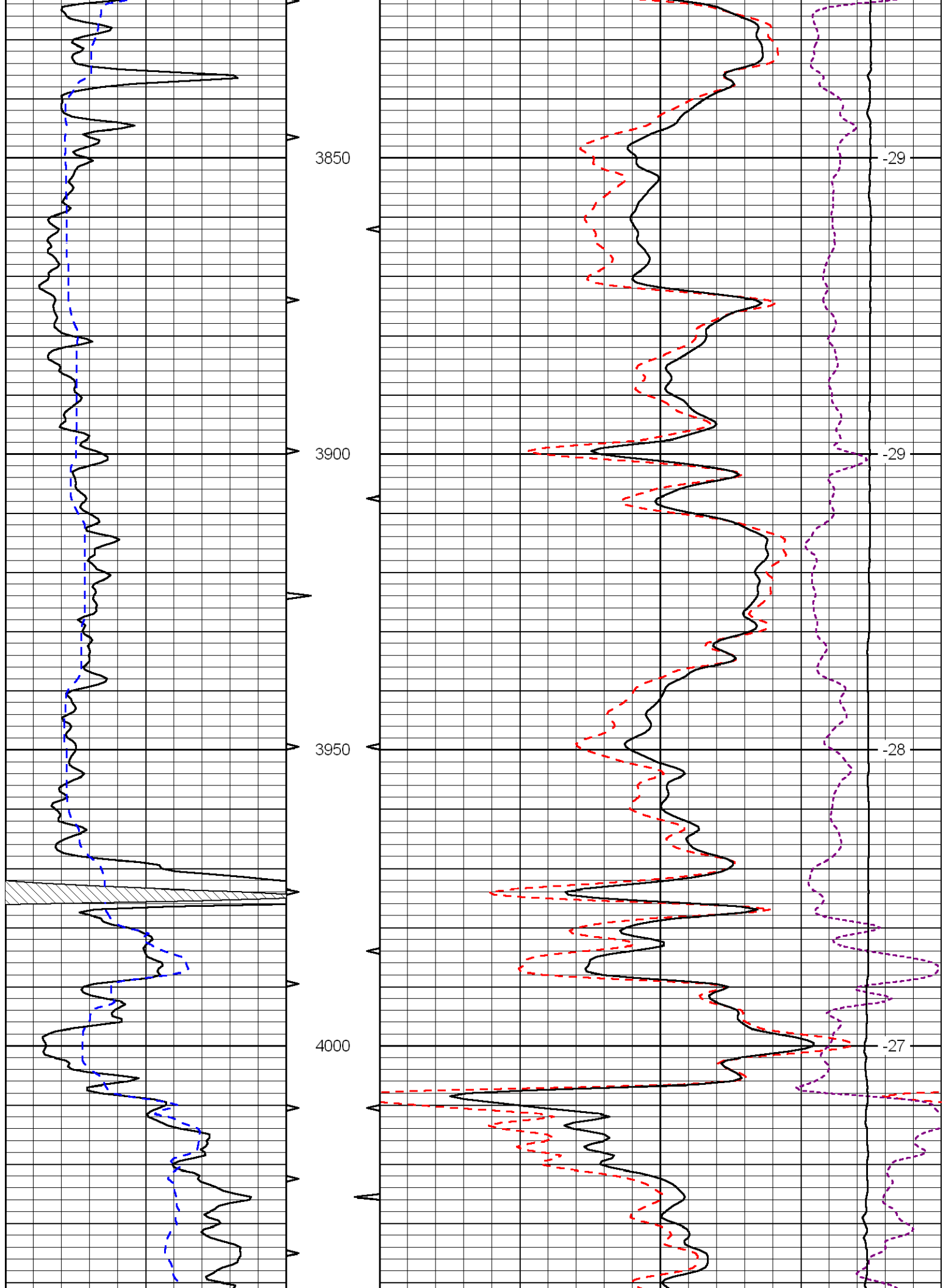
0	Gamma Ray	150
6	Caliper (GAPI)	16

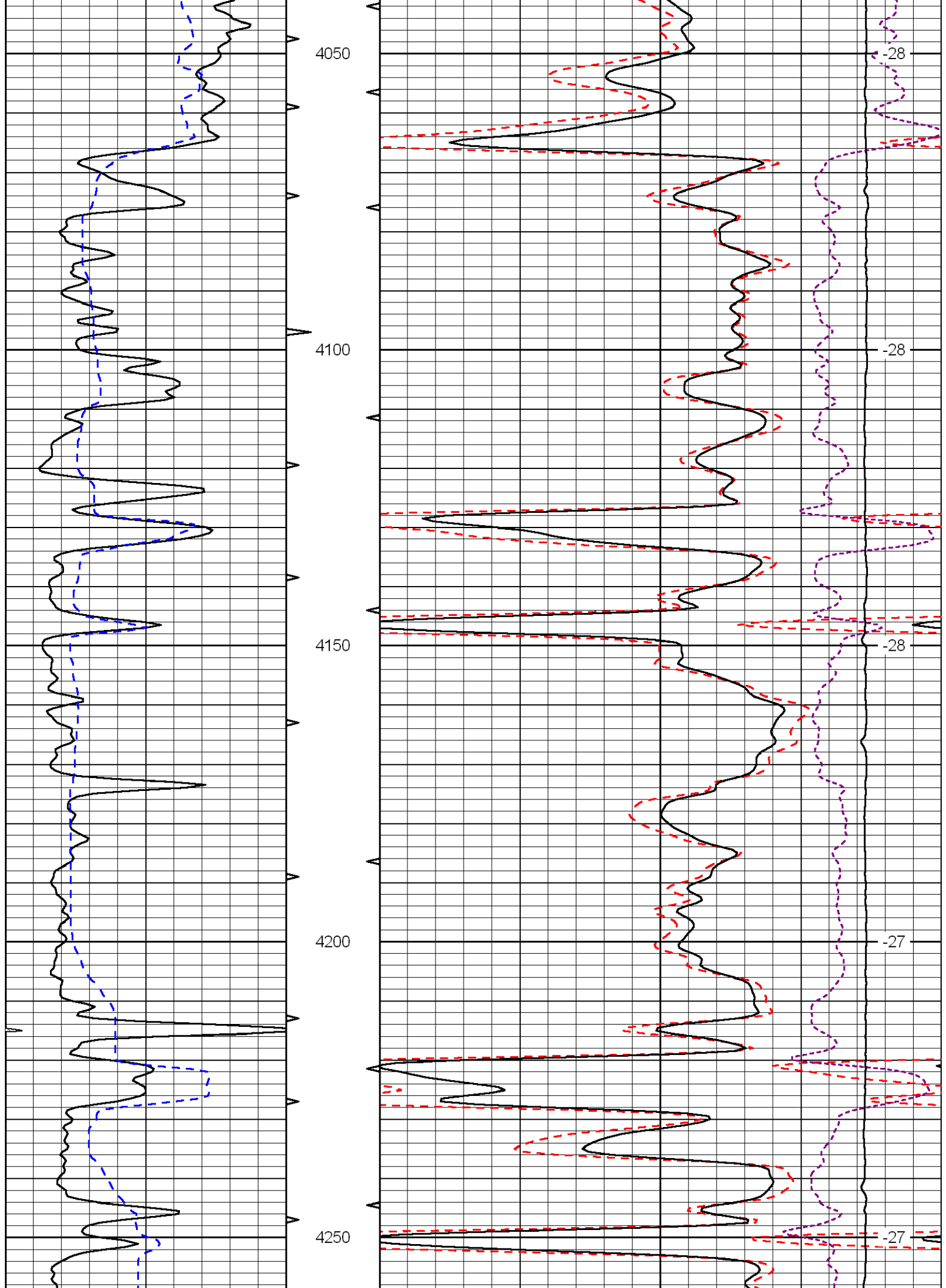
30	Compensated Density	-10
2	Bulk Density	3
15000	Line Tension	0
-0.25	Correction	0.25
		LSPD

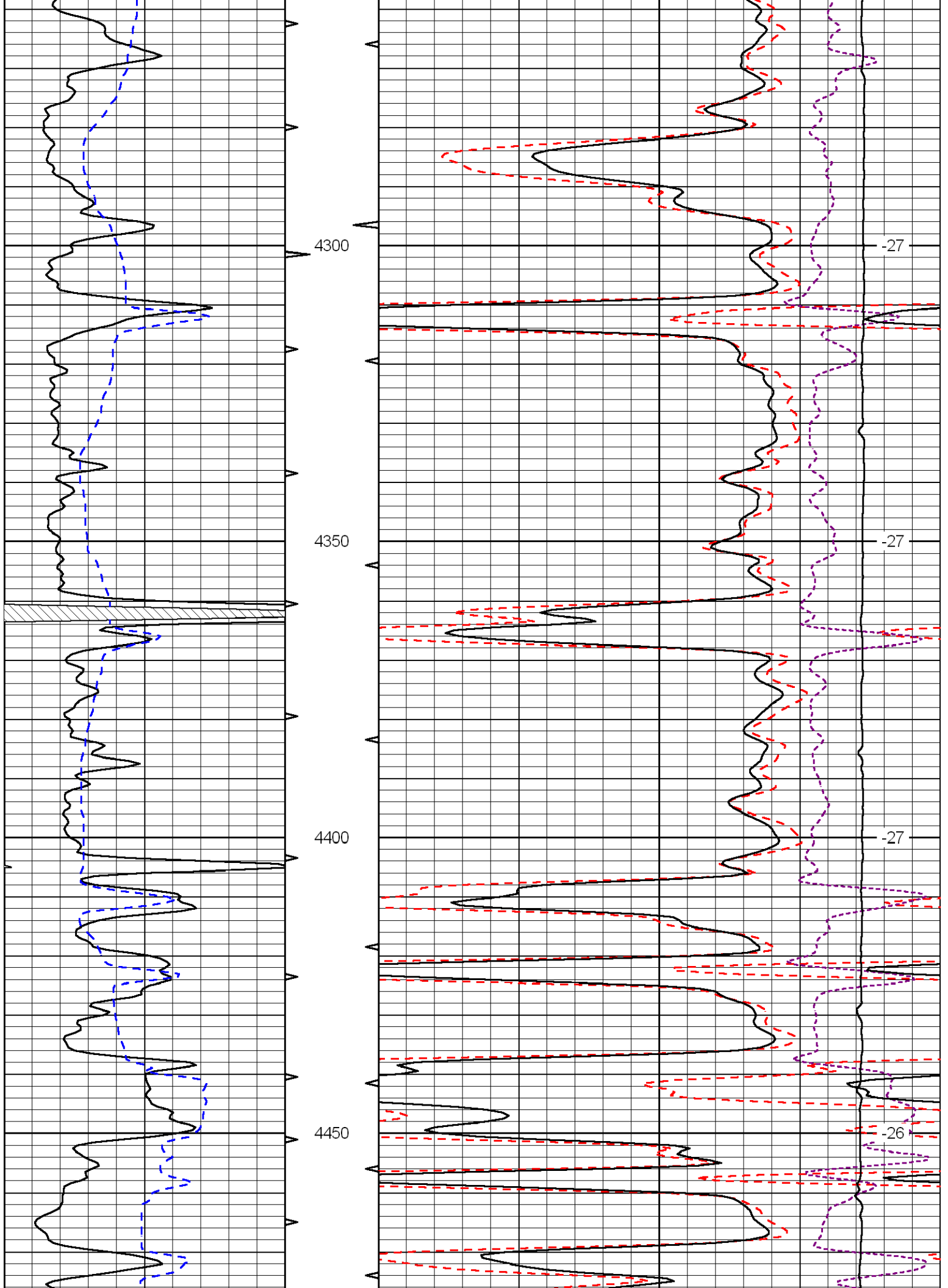


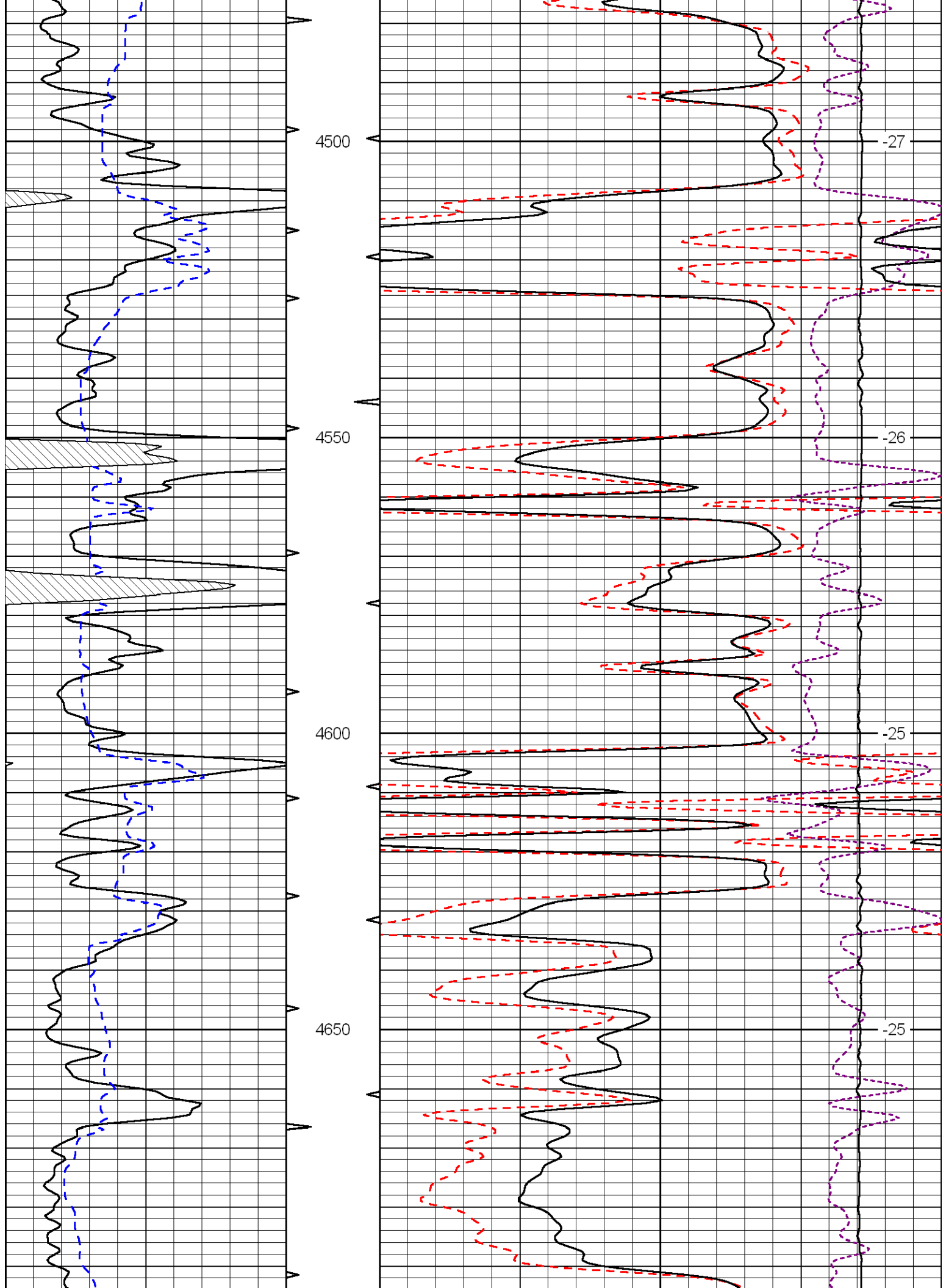




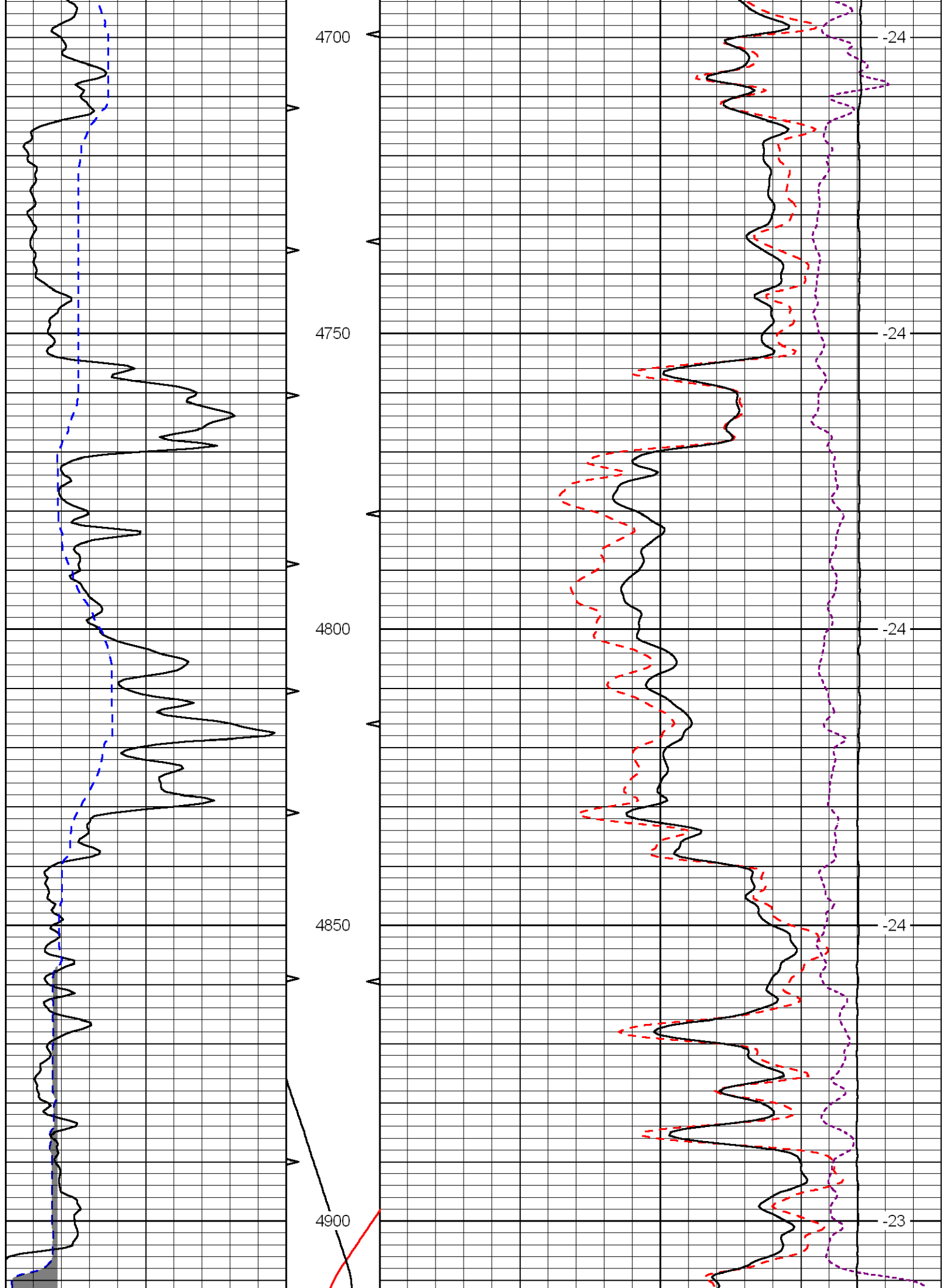


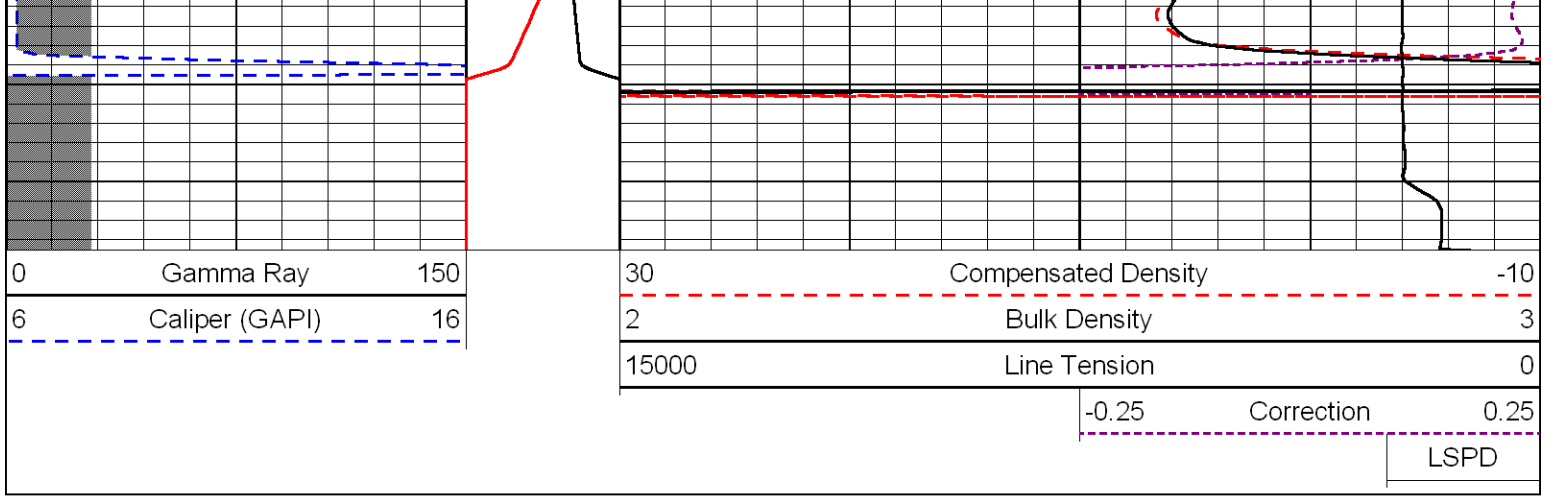




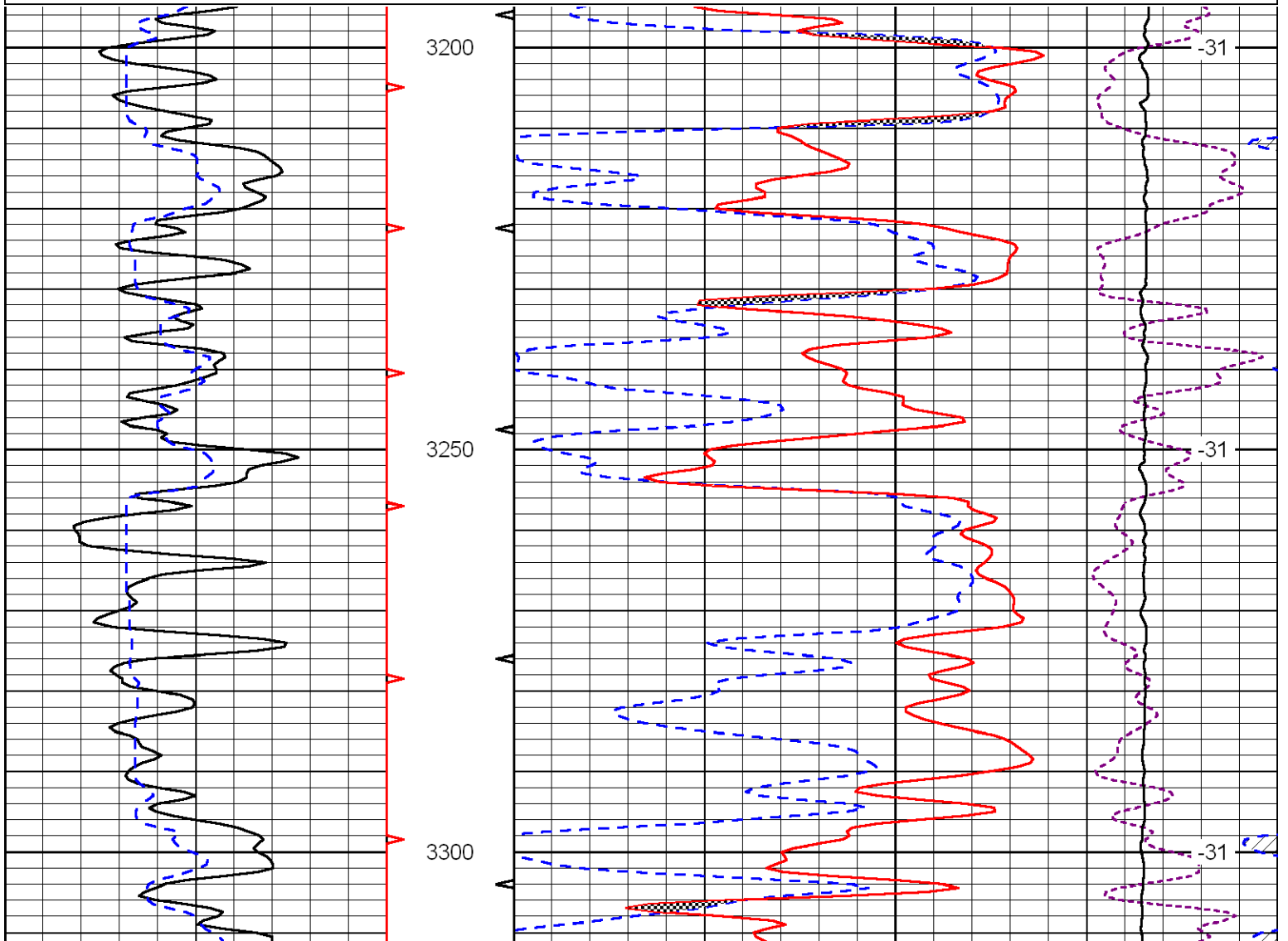
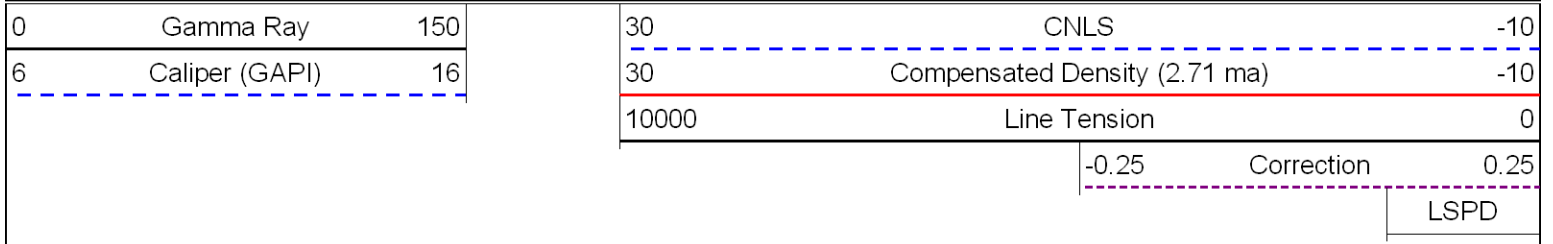


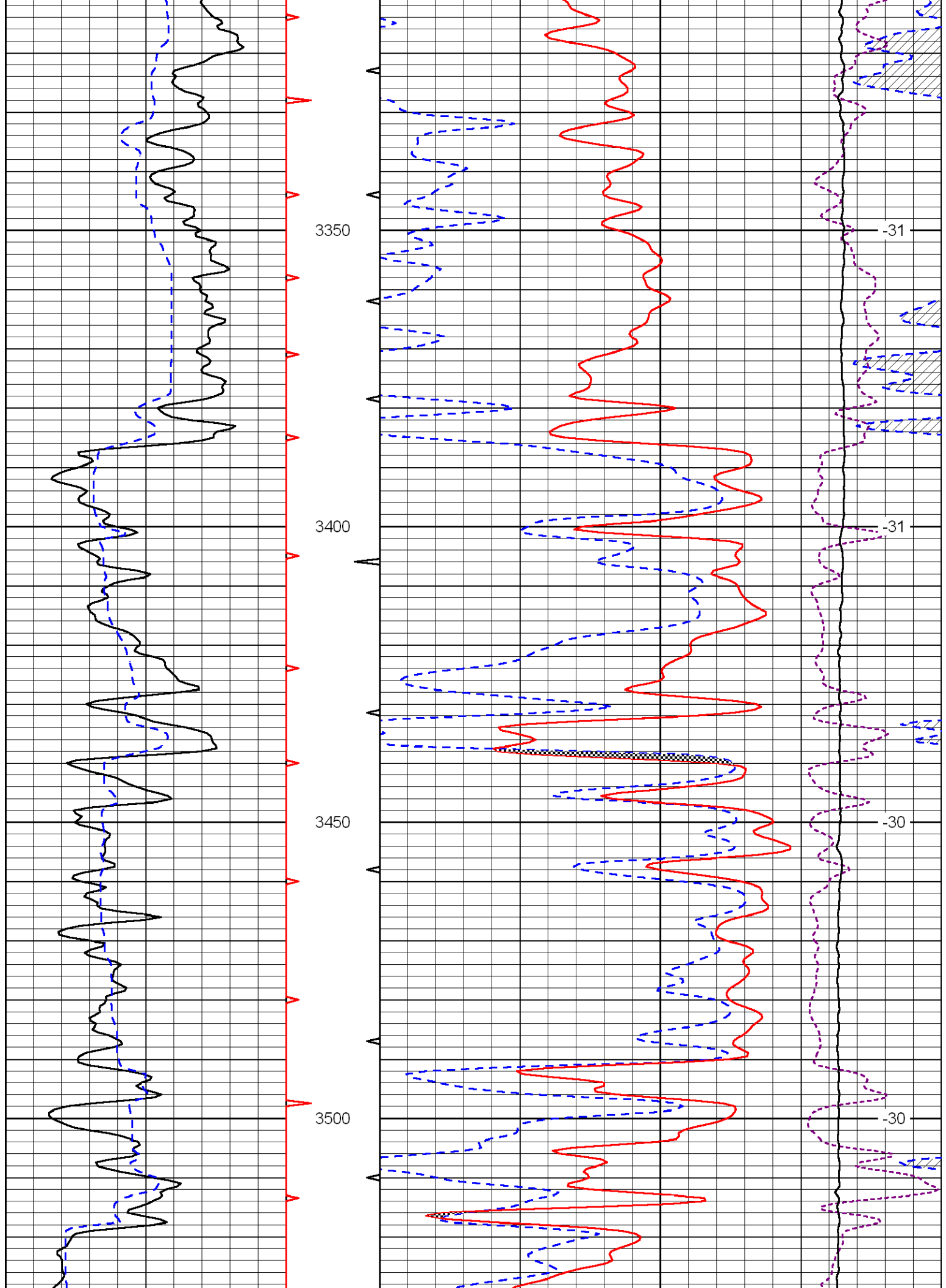


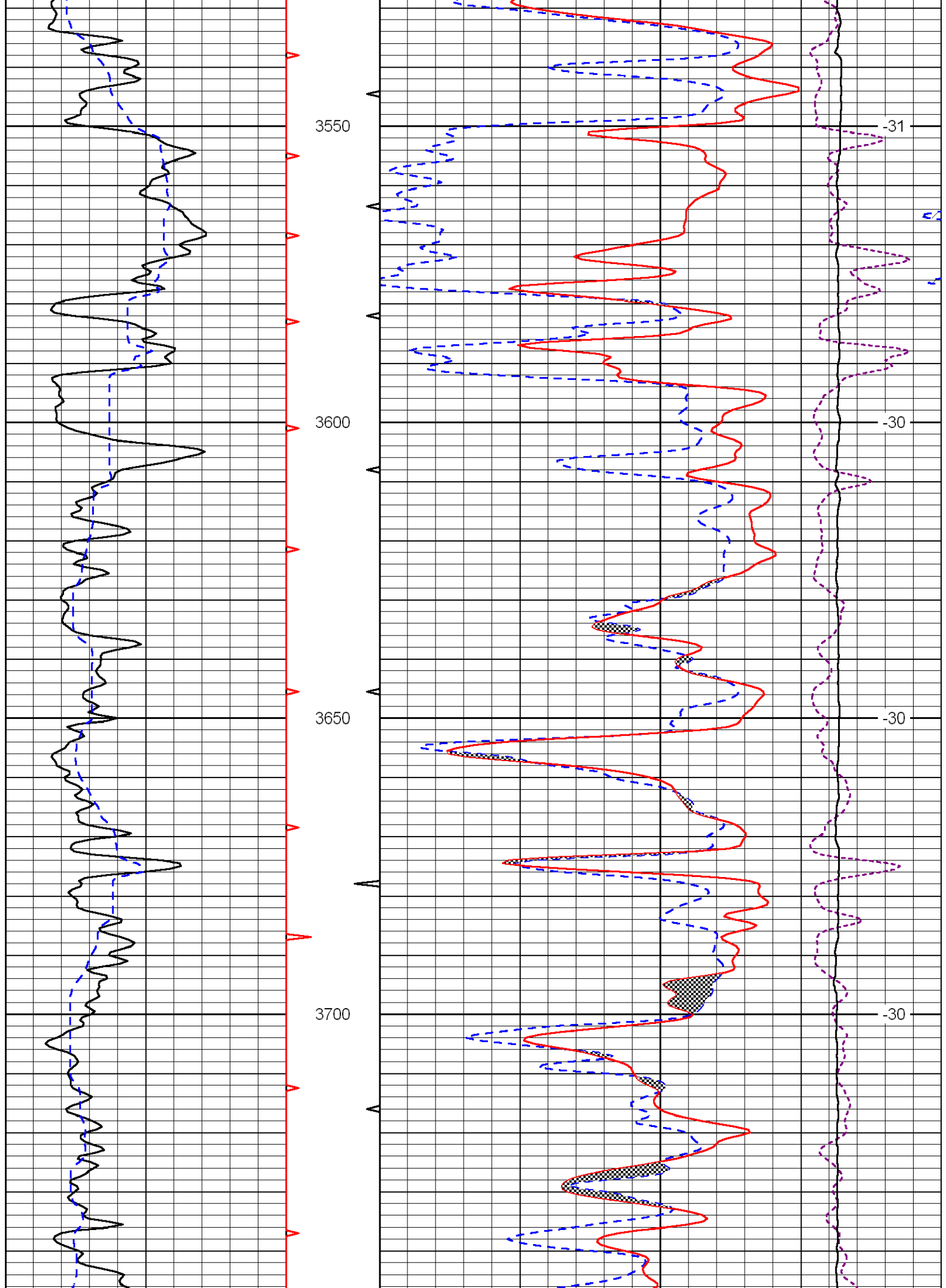


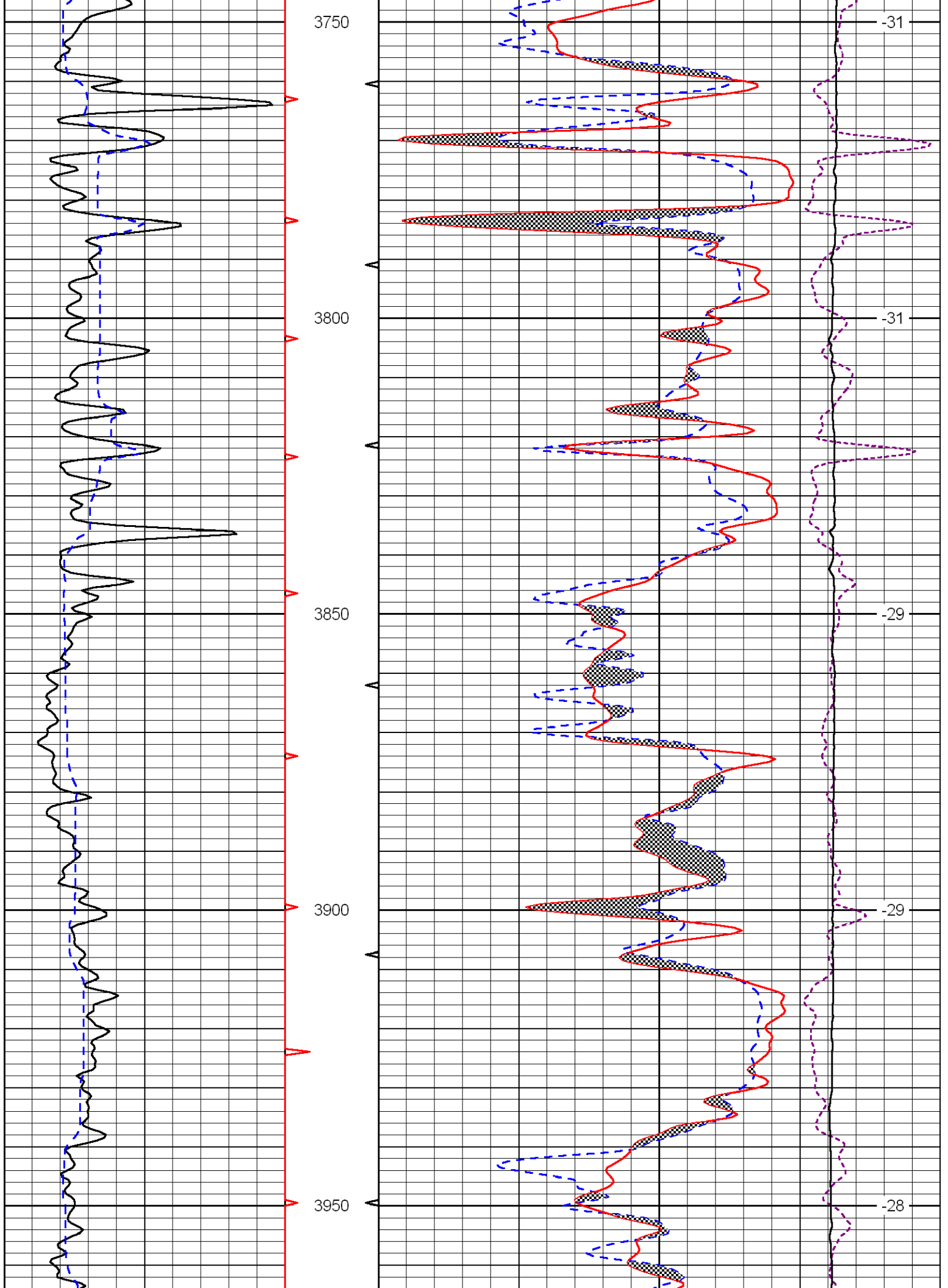


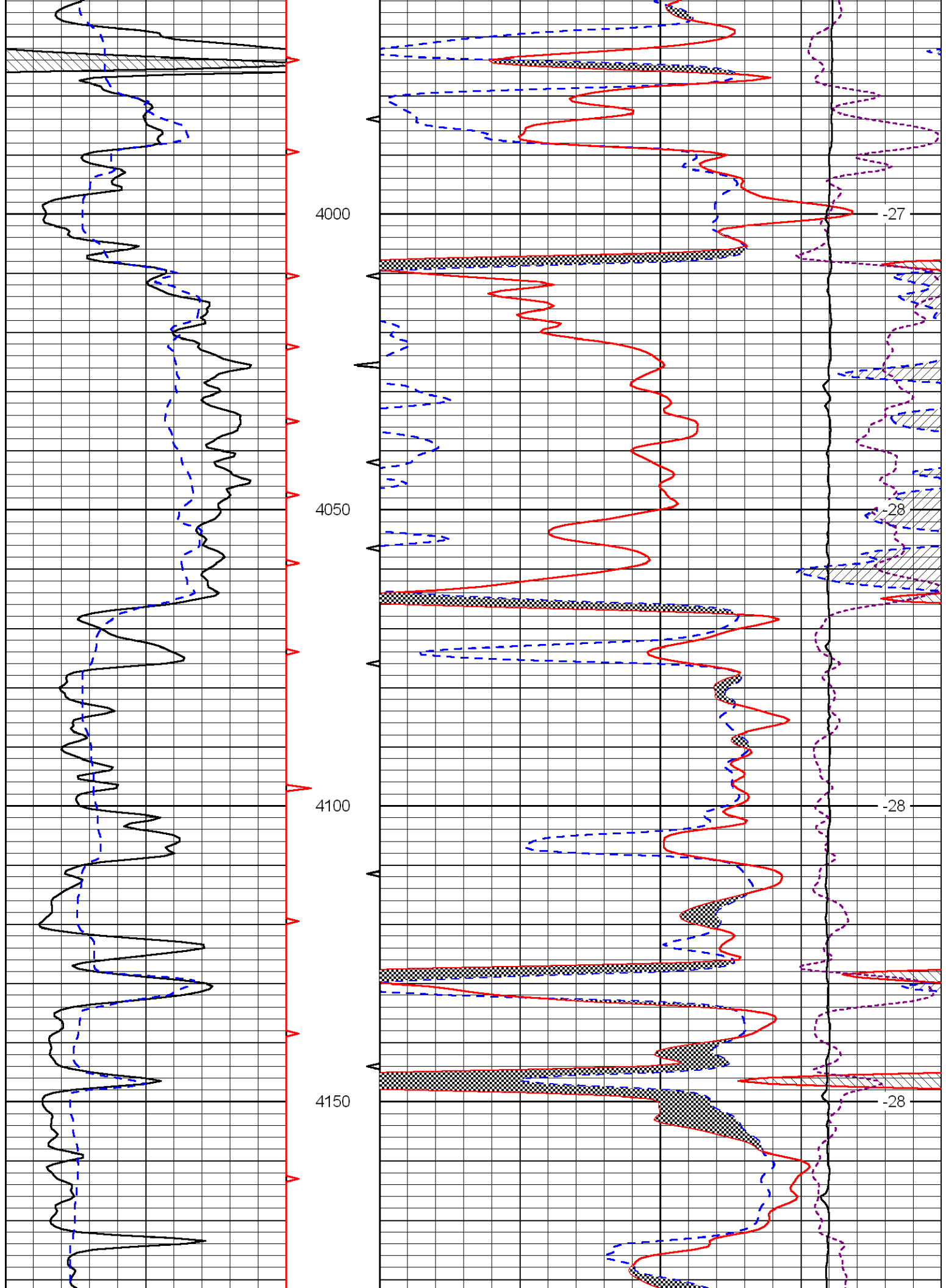
Database File: murfin070112hd.db  
 Dataset Pathname: dil/murfnstack  
 Presentation Format: cndlspec  
 Dataset Creation: Sun Jul 01 11:41:53 2012  
 Charted by: Depth in Feet scaled 1:240

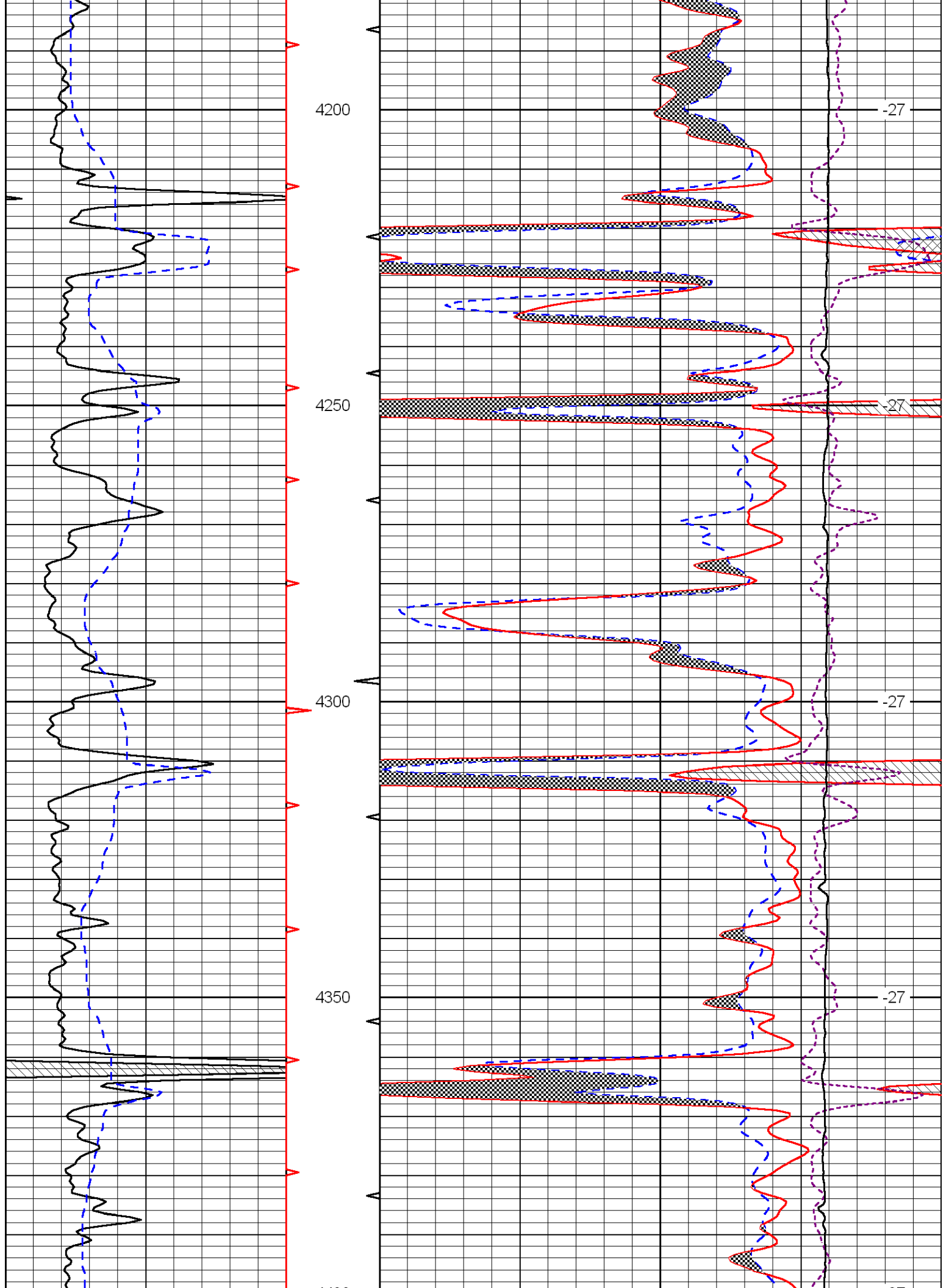


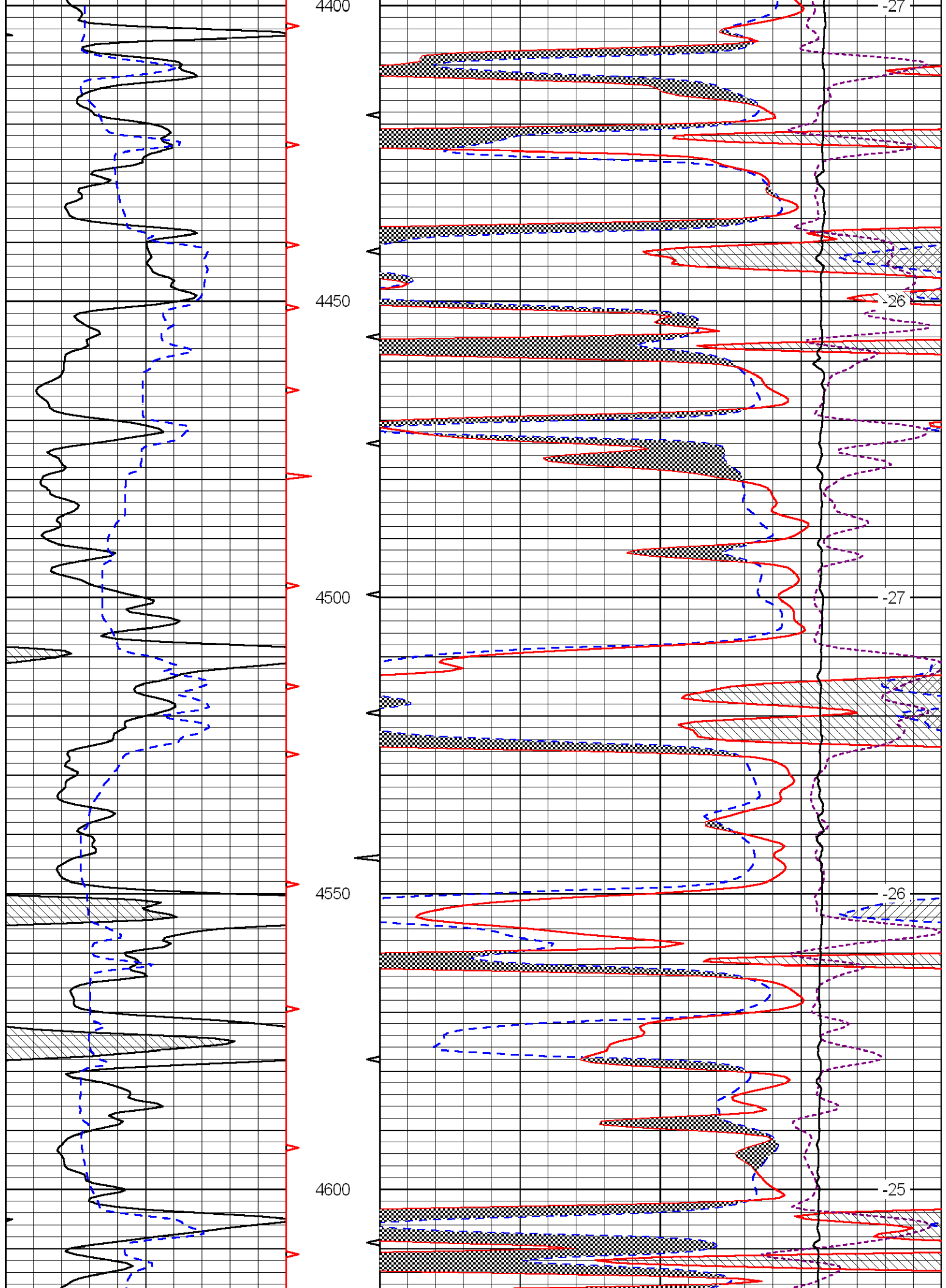














DST#1 4626-4657' (Miss):  
 30-60-30-60. FF: wk blw  
 1/2" into bucket & then  
 died. FF: No blw. Rec.:  
 60' WM (95%W, 5%M, trace  
 of oil). HP: 2263-2224.  
 FP: 31/47, 45/56. SIP:  
 1334-1245. BHT: 127°

D  
 S  
 T  
 #  
 1

4650  
 4700  
 4750  
 4800

DST #2 4626-4693'  
 (Miss): 30-60-60-90.  
 FF: Fair blw built to  
 5". FF: wk blw, built  
 to 2". Rec.: 120' W.  
 62' MCW (30%M, 70%W),  
 147' GCM (2%G, 98%M),  
 1' O. HP: 2329-2258.  
 FP: 43/128, 143/199.  
 SIP: 1411-1383. BHT:  
 131°.

D  
 S  
 T  
 #  
 2

-24  
 -24  
 -24

