

LOG-TECH



DIGITAL LOG (785) 625-3858

Dual Induction Log

API No. 15-047-21,607-00-00

Company **Murfin Drilling Company, Inc.**
 Well **Hattrup #1-3**
 Field **N/A**
 County **Edwards** State **Kansas**

Location **2310' FSL & 1000' FWL**

Sec: **3** Twp: **24 S** Rge: **20 W**

Other Services
 CNL/CDL
 MEL/BHCS

Permanent Datum	Ground Level	Elevation 2274	K.B. 2285
Log Measured From	Kelly Bushing	11 Ft. Above Perm. Datum	D.F. 2274
Drilling Measured From	Kelly Bushing		G.L. 2274
Date		7/01/2012	
Run Number		One	
Depth Driller		4930	
Depth Logger		4930	
Bottom Logged Interval		4929	
Top Log Interval		00	
Casing Driller		8.625 @ 380	
Casing Logger		377	
Bit Size		7.875	
Type Fluid in Hole		Chemical	
Salinity, ppm CL		8,000	
Density / Viscosity		9.4 51	
pH / Fluid Loss		9.5 10.0	
Source of Sample		Flowline	
Rm @ Meas. Temp		.80 @ 70	
Rmf @ Meas. Temp		.60 @ 70	
Rmc @ Meas. Temp		1.08 @ 70	
Source of Rmf / Rmc		Charts	
Rm @ BHT		.44 @ 127	
Operating Rig Time		5 1/2 Hours	
Max Rec. Temp. F		127	
Equipment Number		91	
Location		Havs	
Recorded By		K. Bange	
Witnessed By		Robert Hendrix	

<<< Fold Here >>>

All interpretations are opinions based on inferences from electrical or other measurements and we cannot and do not guarantee the accuracy or correctness of any interpretation, and we shall not, except in the case of gross or willful negligence on our part, be liable or responsible for any loss, costs, damages, or expenses incurred or sustained by anyone resulting from any interpretation made by any of our officers, agents or employees. These interpretations are also subject to our general terms and conditions set out in our current Price Schedule.

Comments

Thank you for using Log-Tech, Inc.
 (785) 625-3858

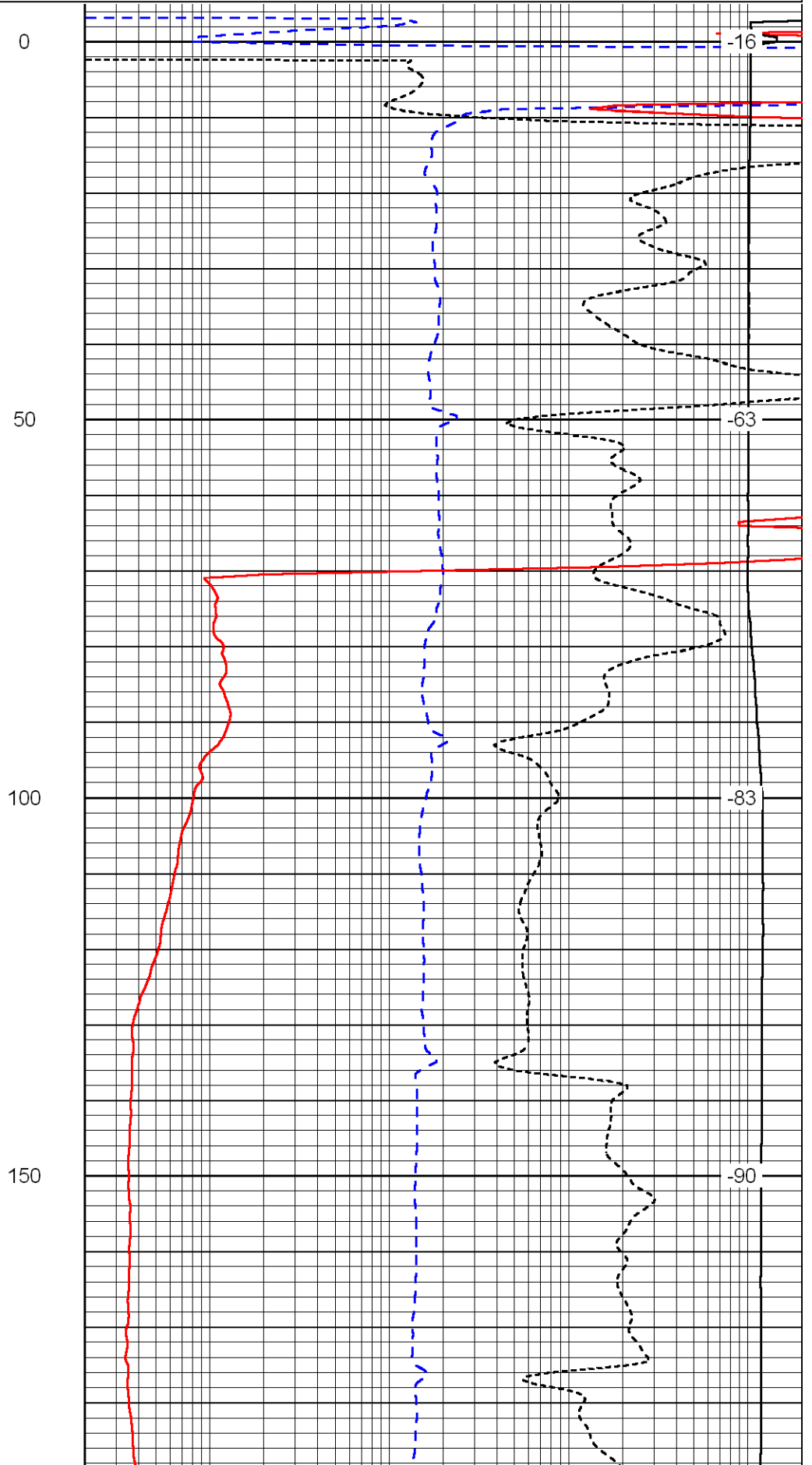
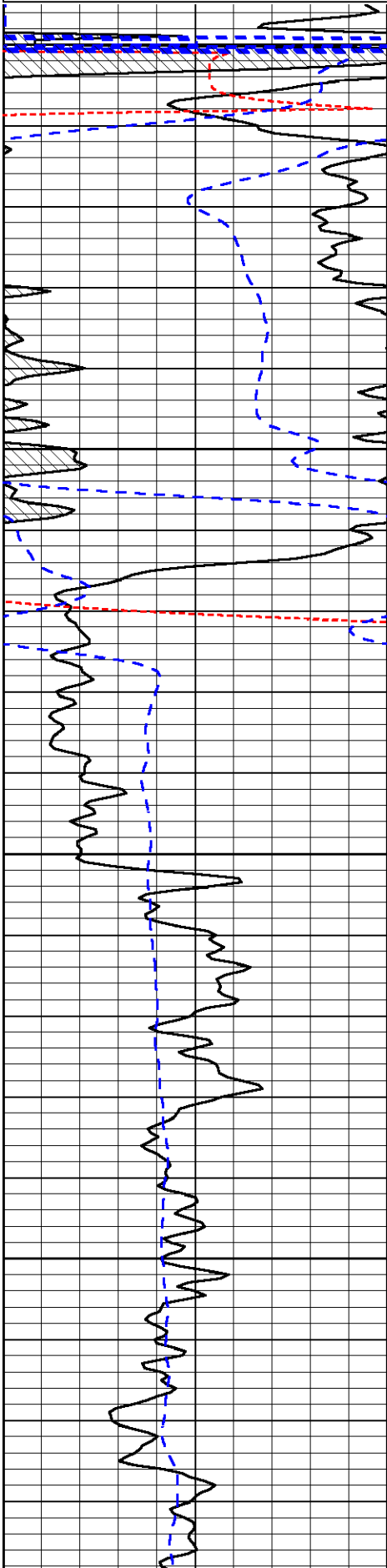
Offerle, 1/2 E to 40th rd,
 6 N to H rd, 1/2 N,
 E into

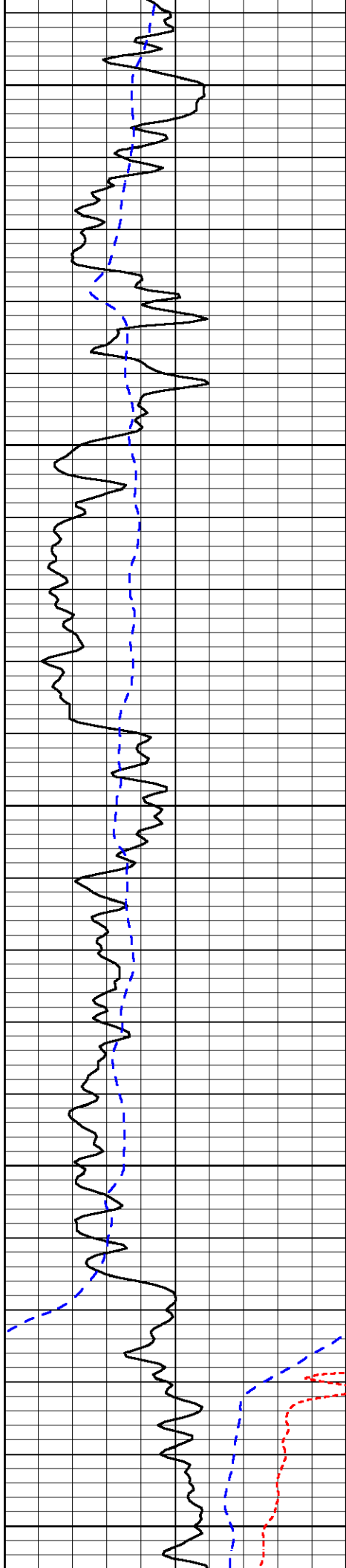
Database File: murfin070112hd.db
 Dataset Pathname: dil/murfnstack
 Presentation Format: dil
 Dataset Creation: Sun Jul 01 11:41:53 2012
 Charted by: Depth in Feet scaled 1:240

0	Gamma Ray	150
-160	RXO/RT	40
-200	SP	0

0.2	Deep Resistivity	2000
0.2	Medium Resistivity	2000
0.2	Shallow Resistivity	2000
10000	Line Tension	0

LSPD





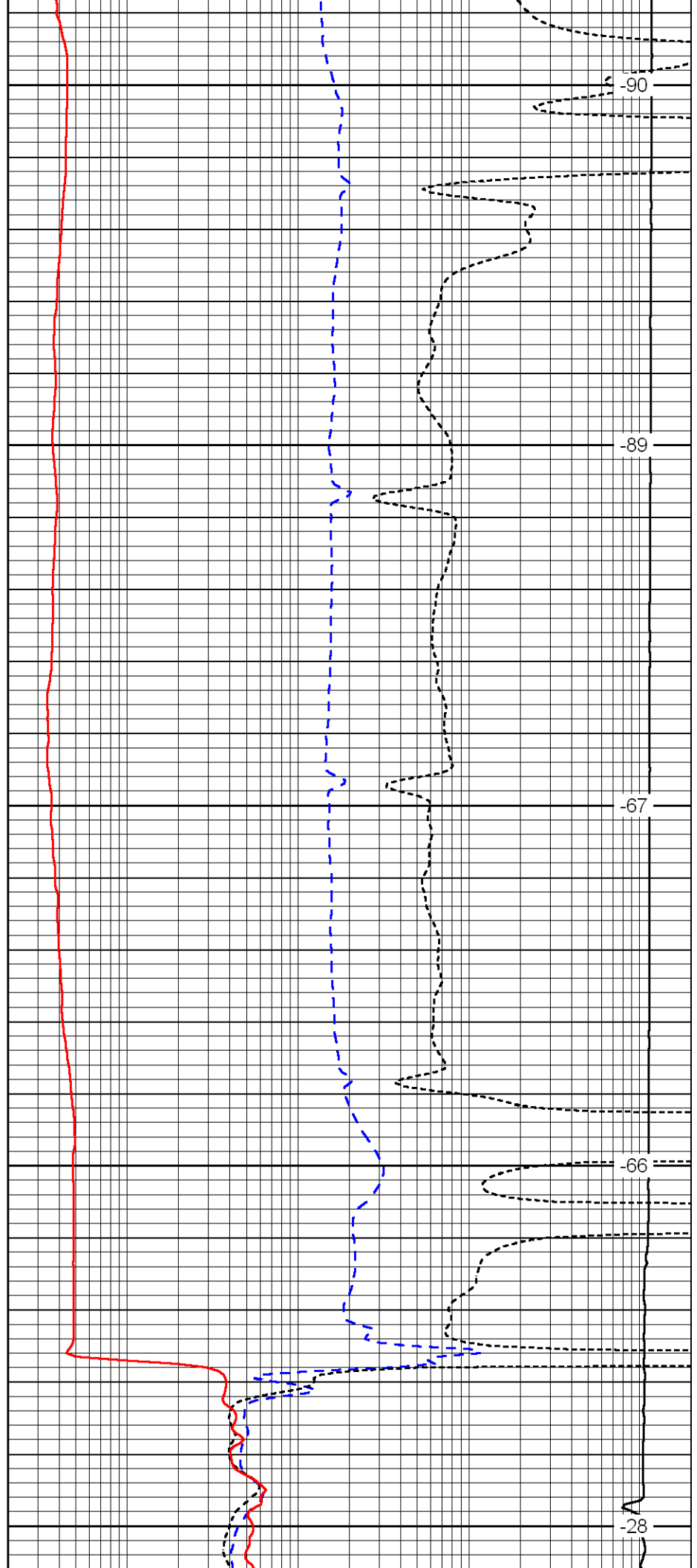
200

250

300

350

400



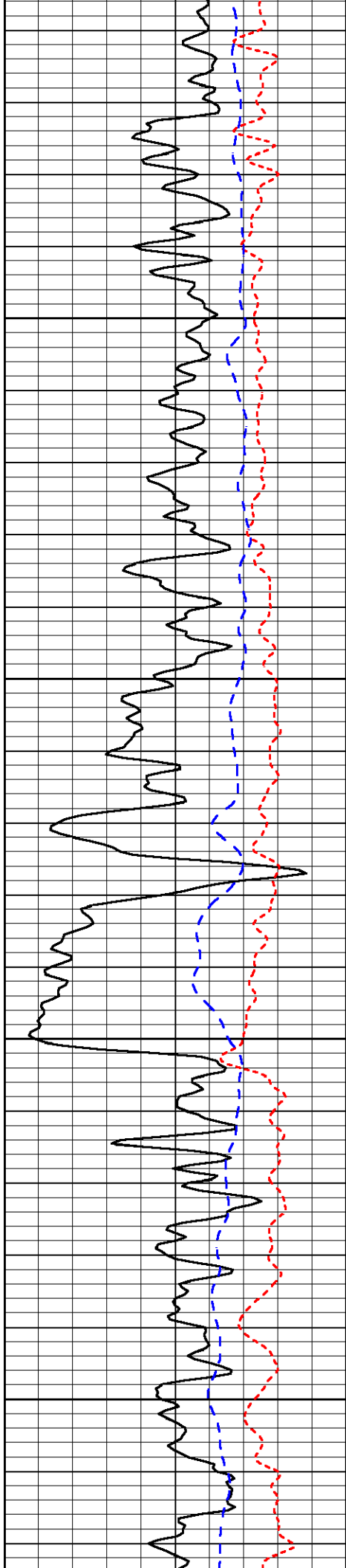
-90

-89

-67

-66

-28

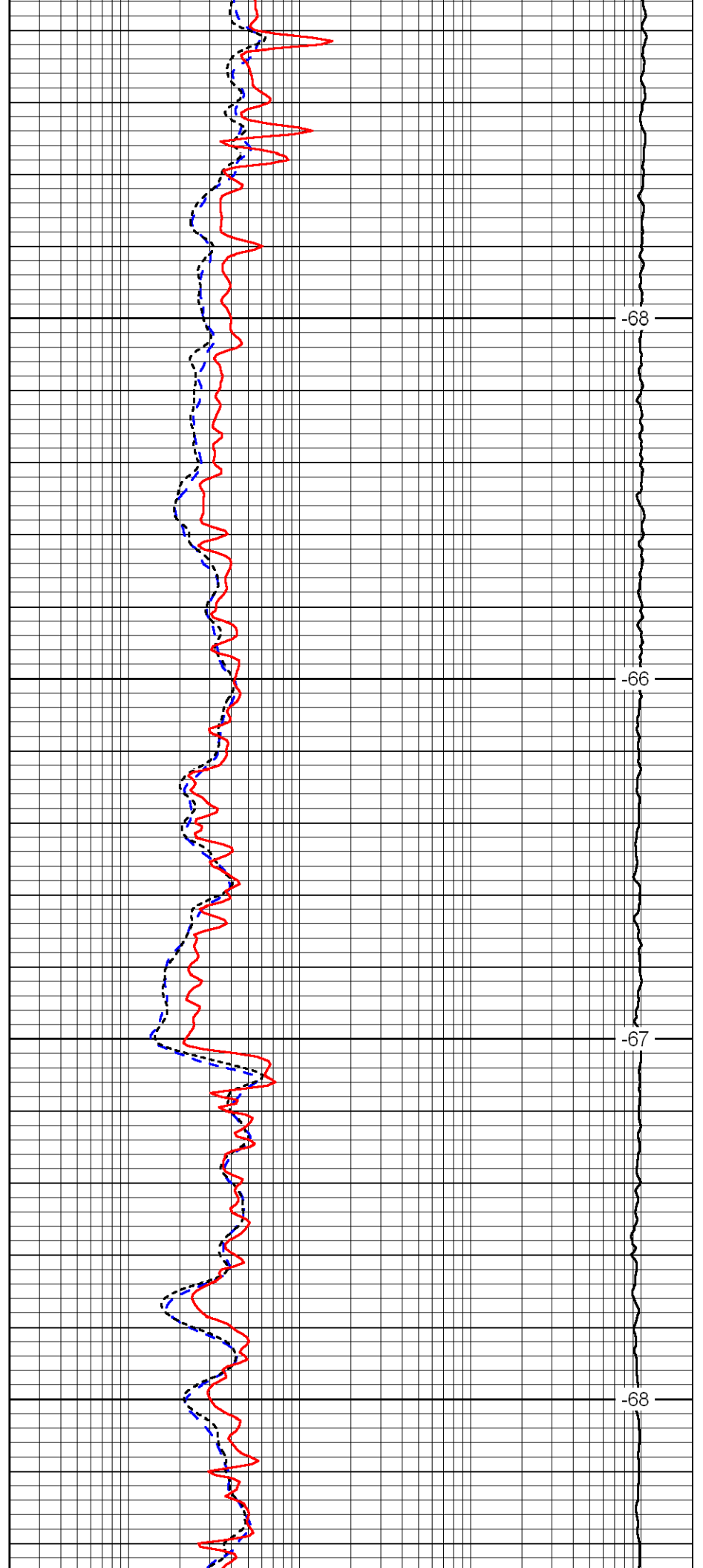


450

500

550

600

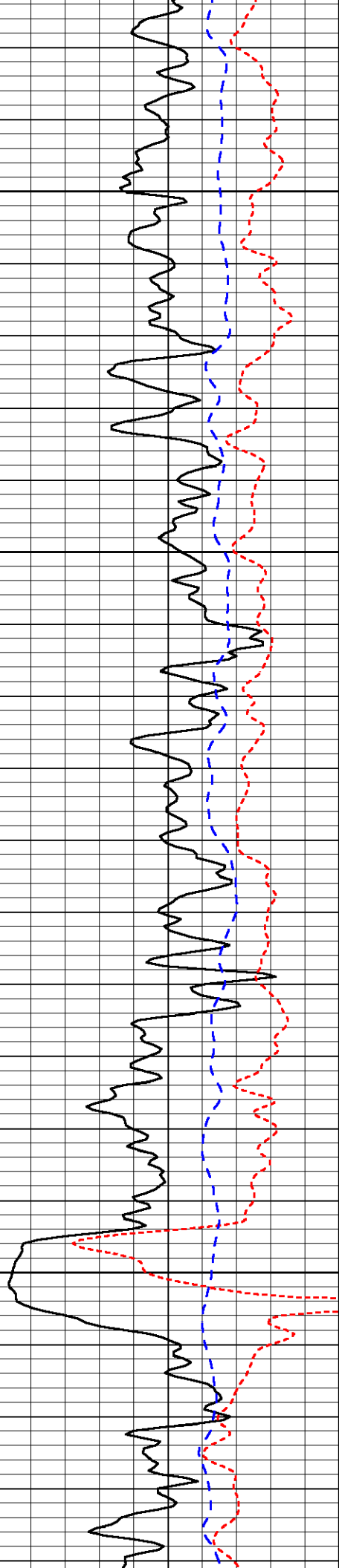


-68

-66

-67

-68

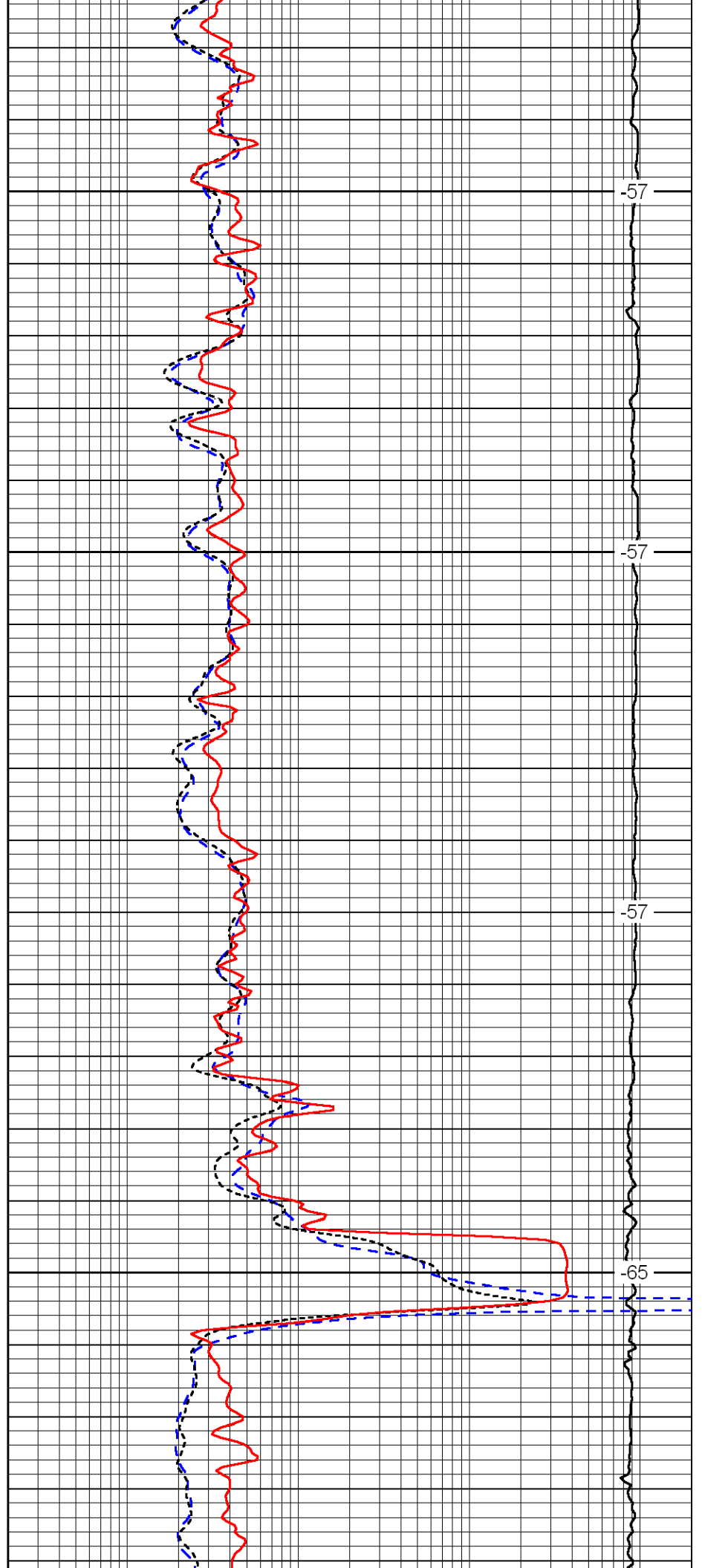


650

700

750

800

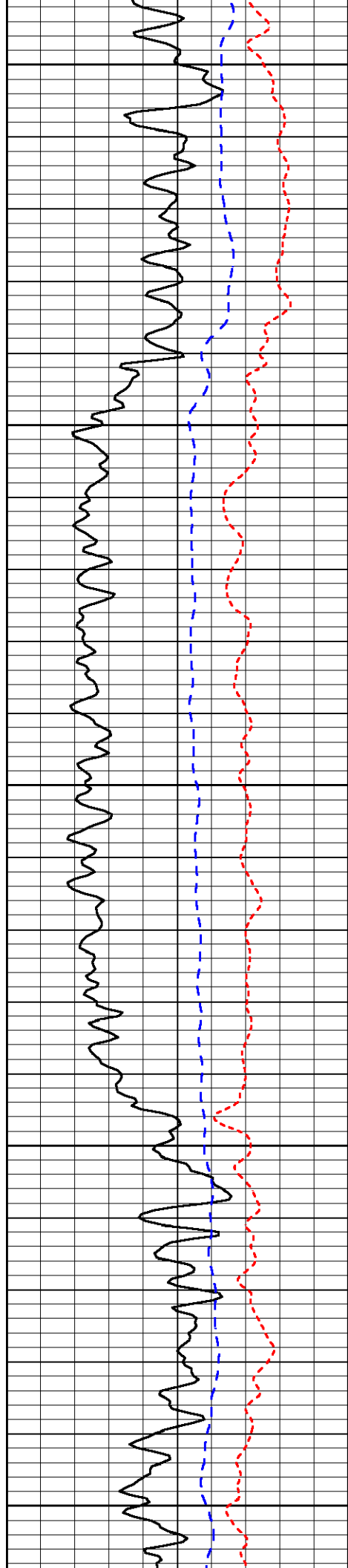


-57

-57

-57

-65



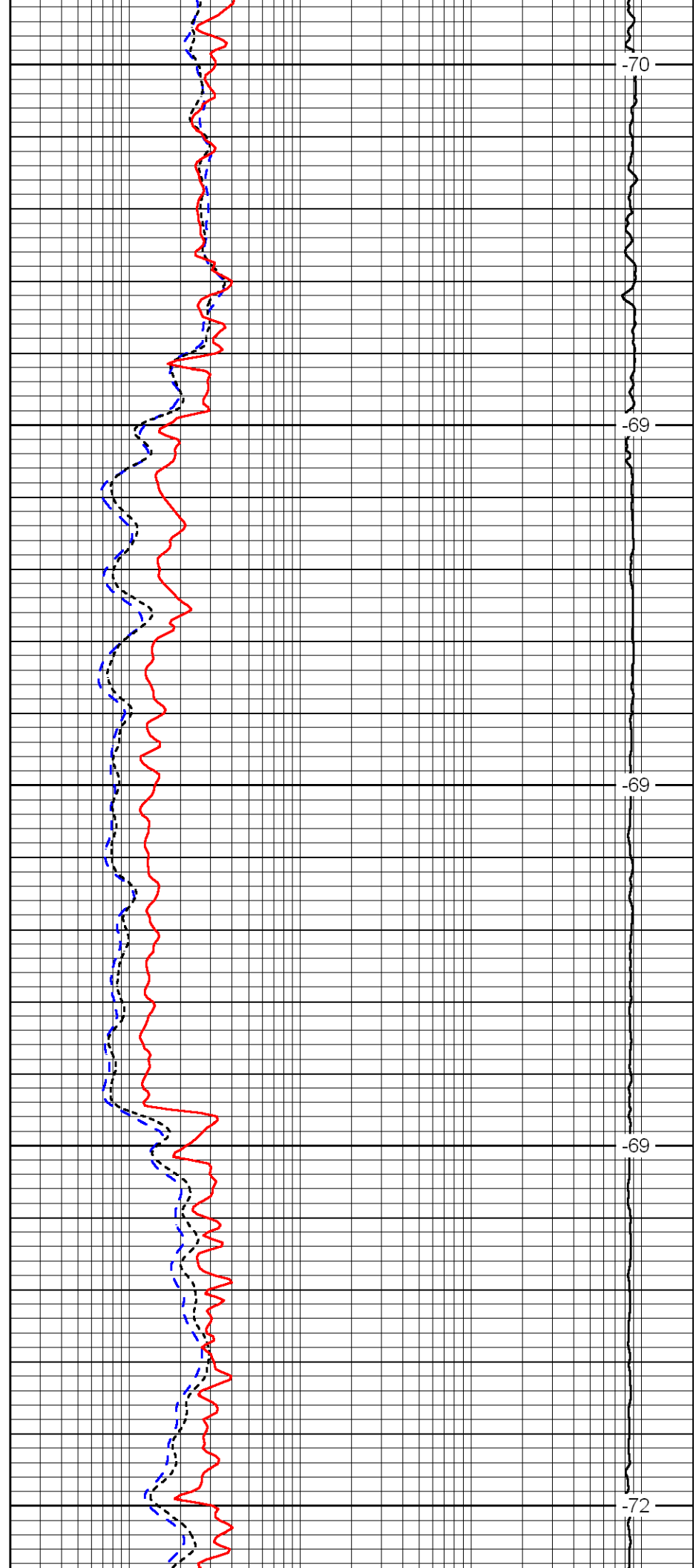
850

900

950

1000

1050



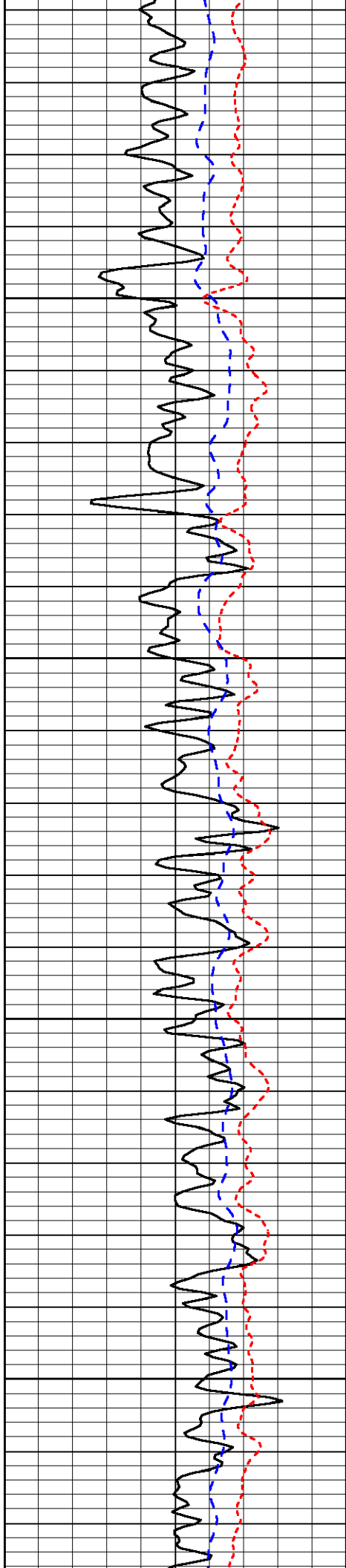
-70

-69

-69

-69

-72

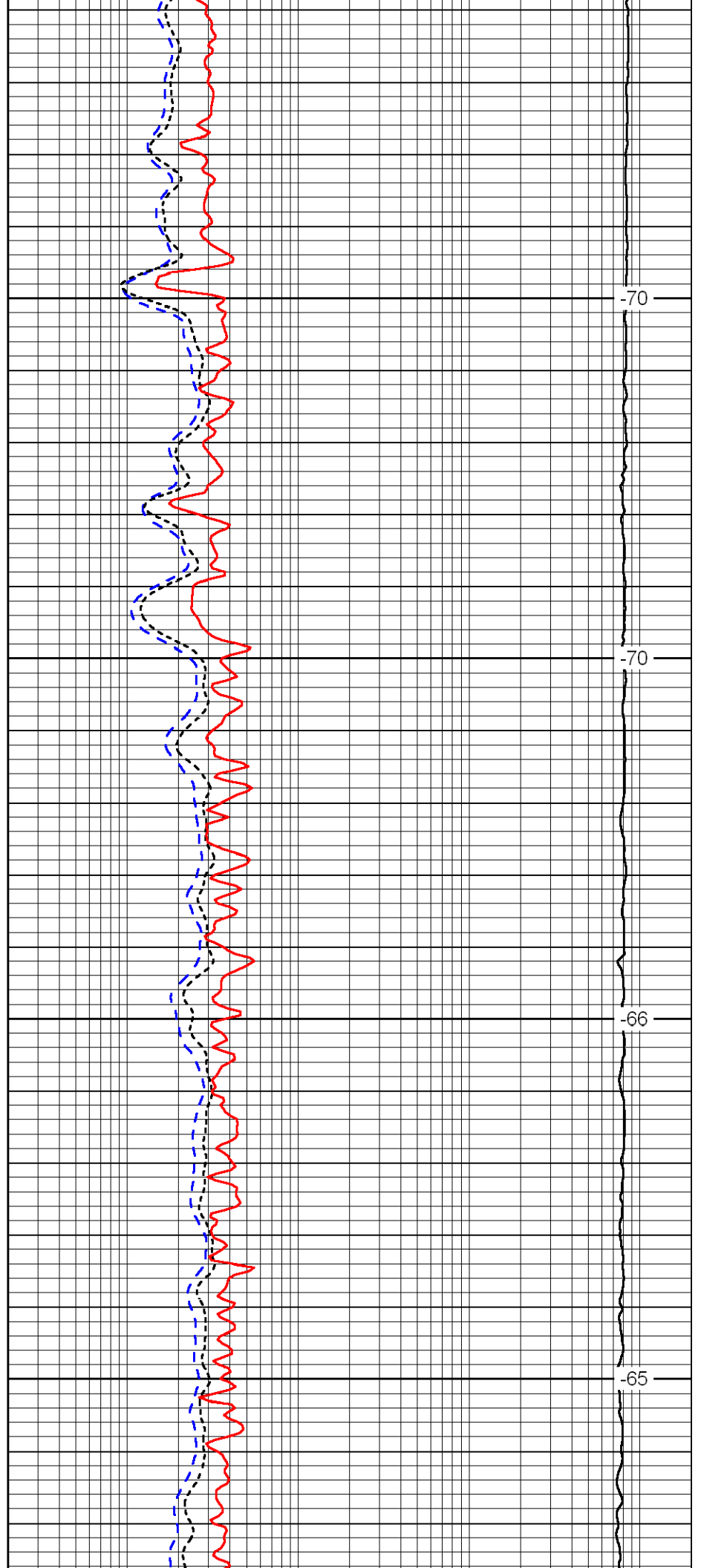


1100

1150

1200

1250

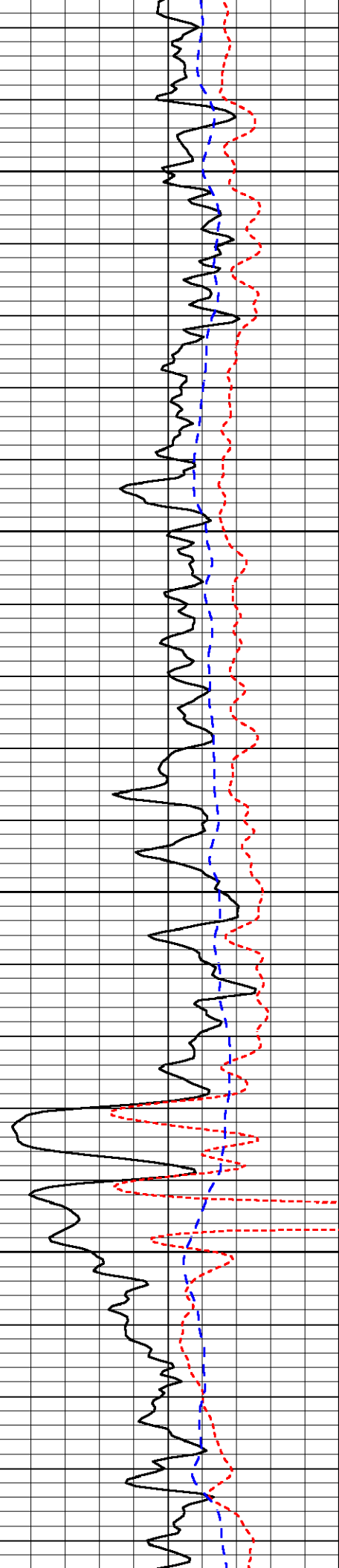


-70

-70

-66

-65

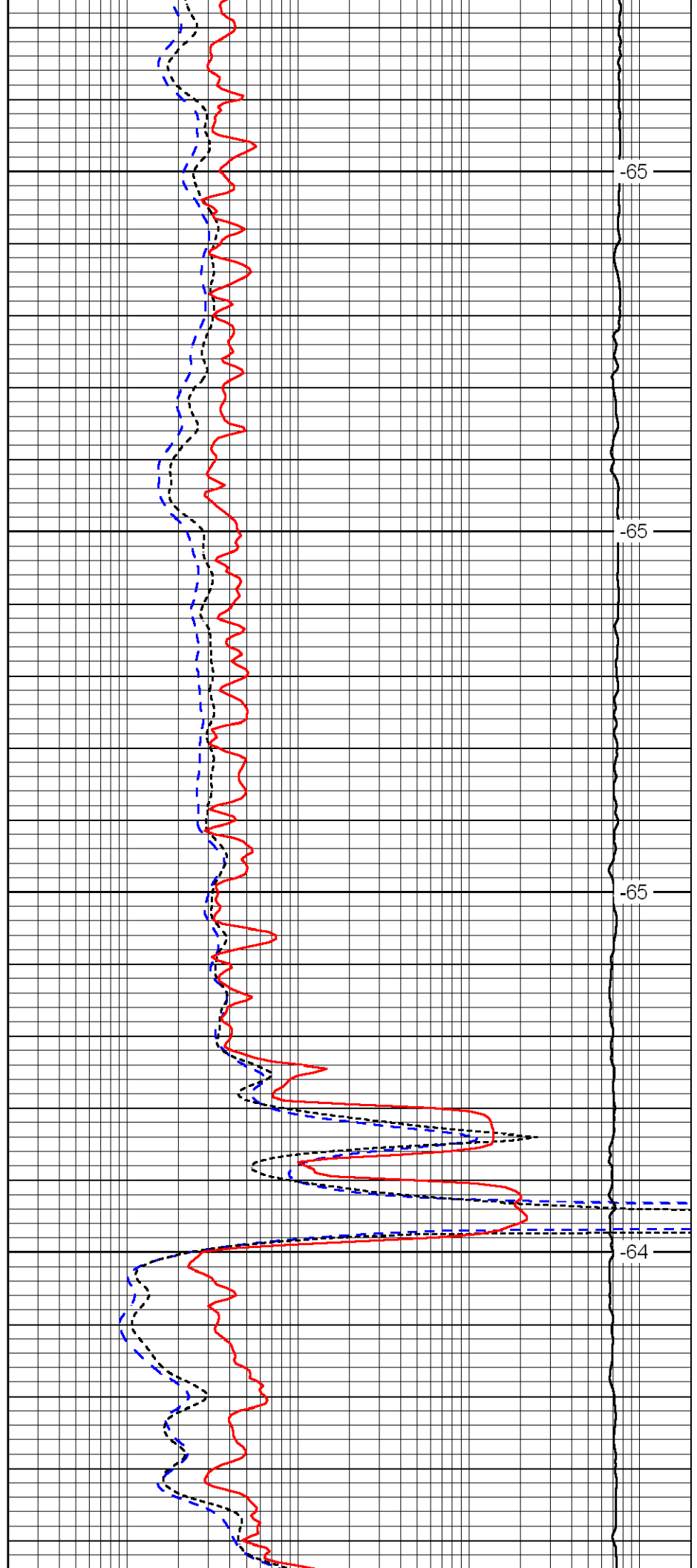


1300

1350

1400

1450

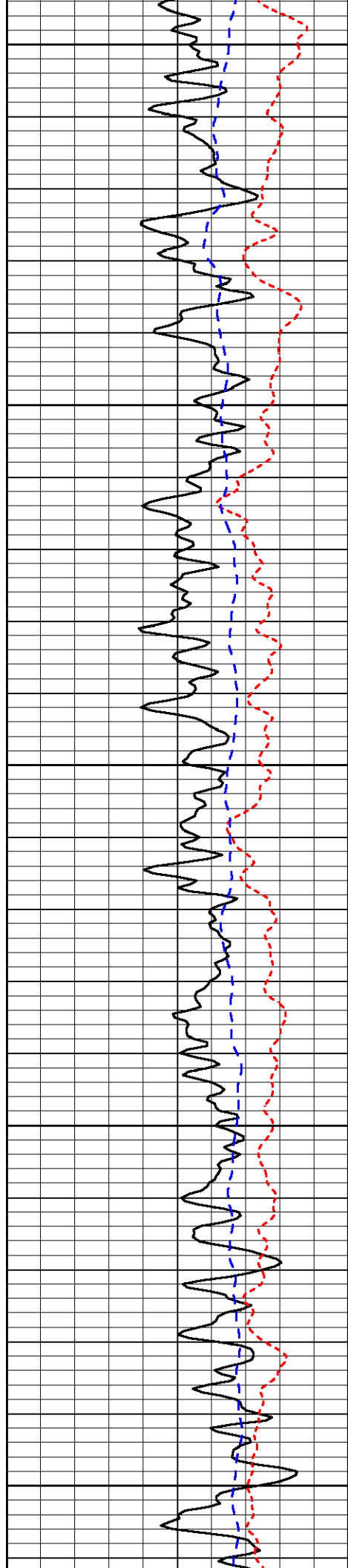


-65

-65

-65

-64



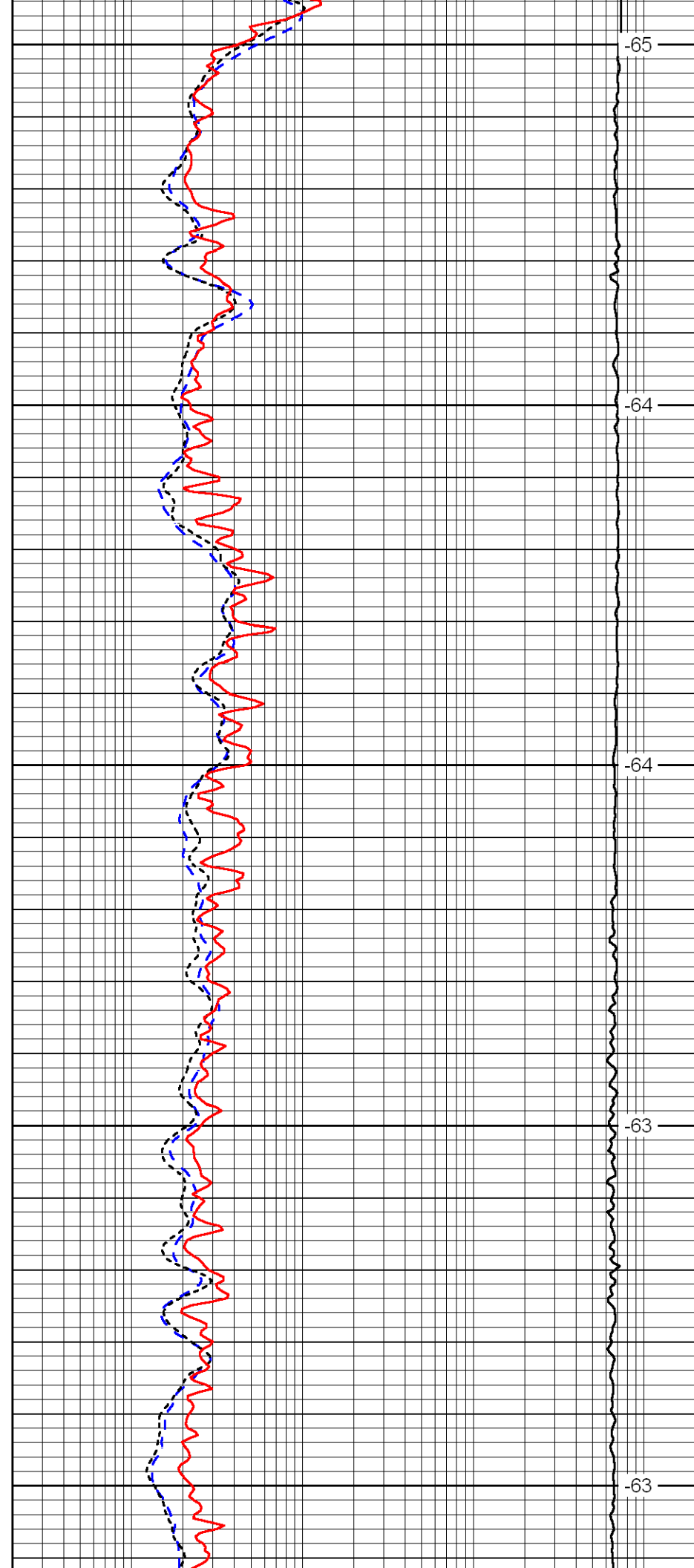
1500

1550

1600

1650

1700



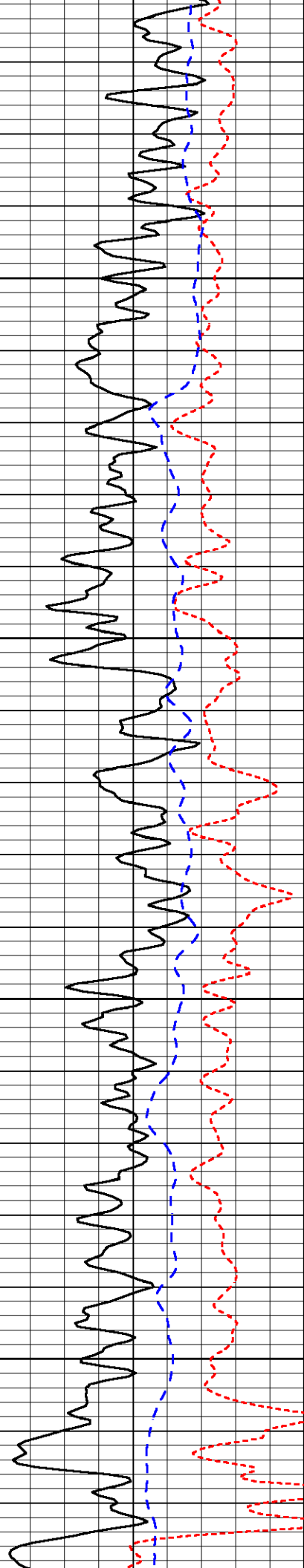
-65

-64

-64

-63

-63

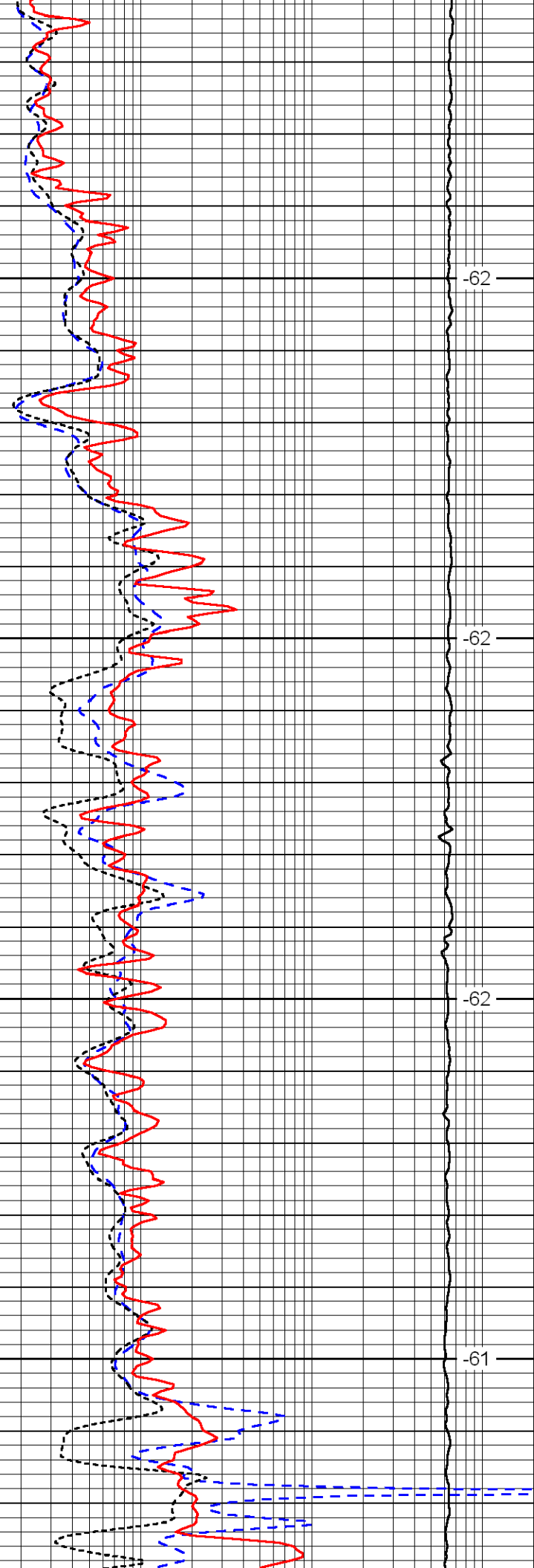


1750

1800

1850

1900

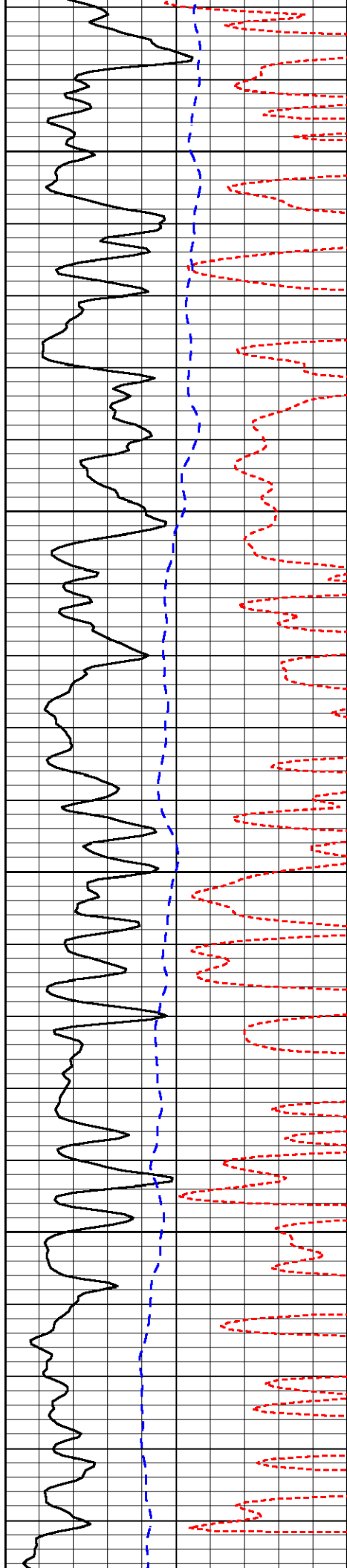


-62

-62

-62

-61

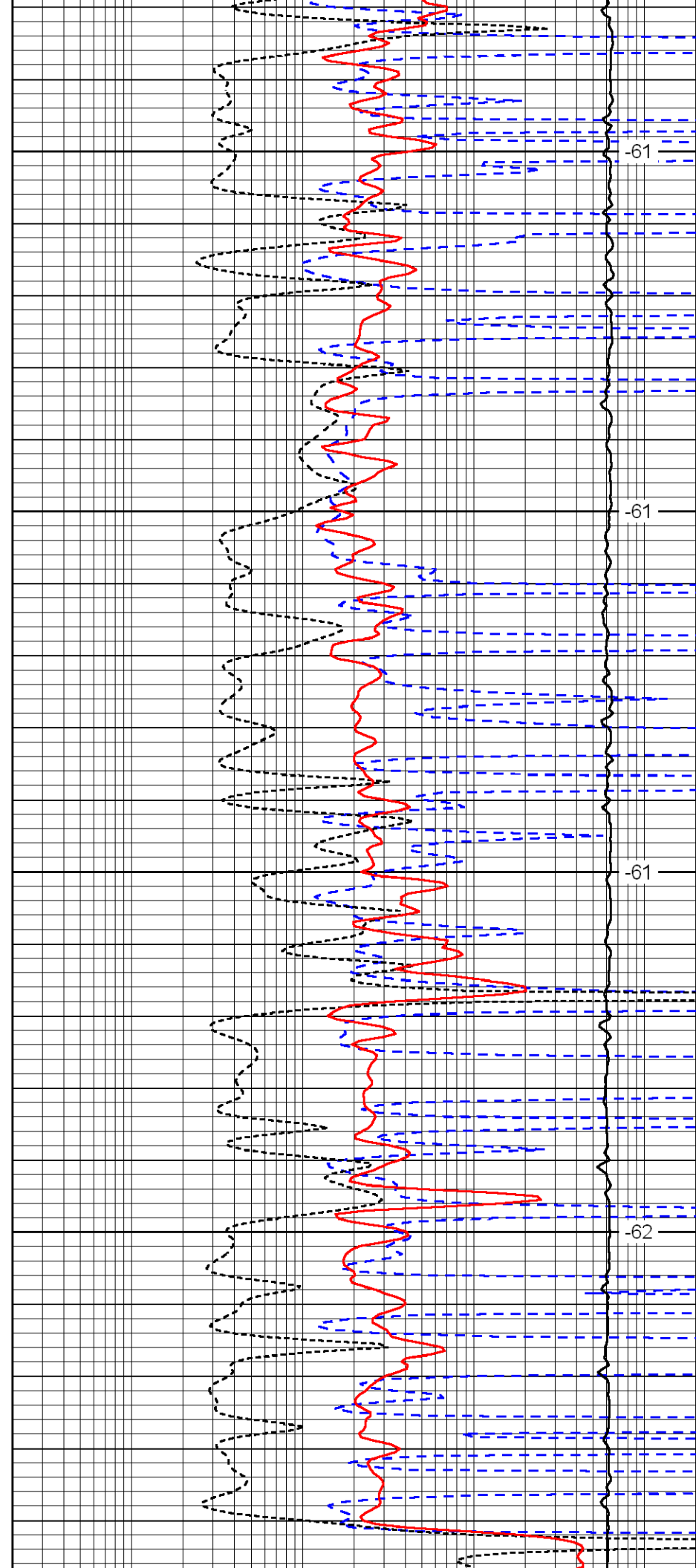


1950

2000

2050

2100

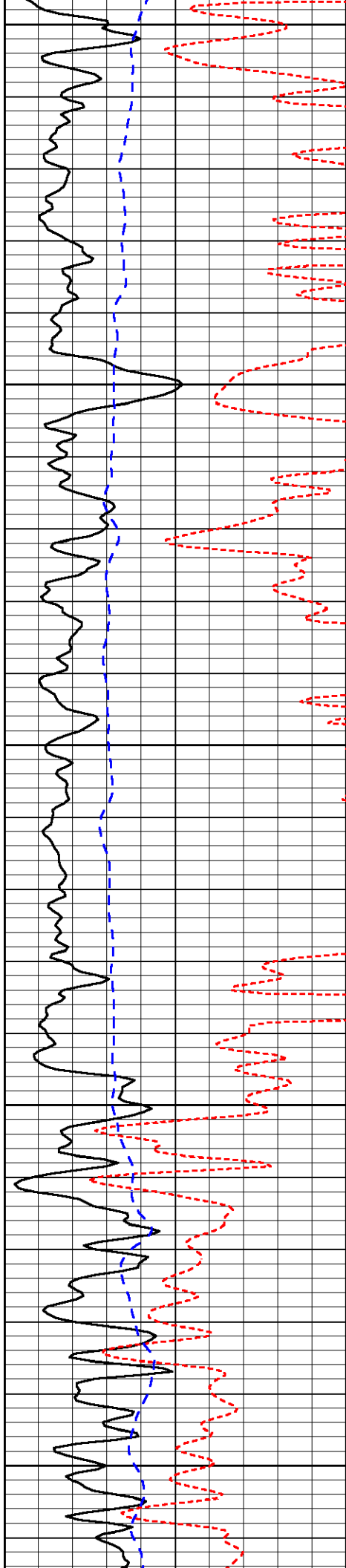


-61

-61

-61

-62



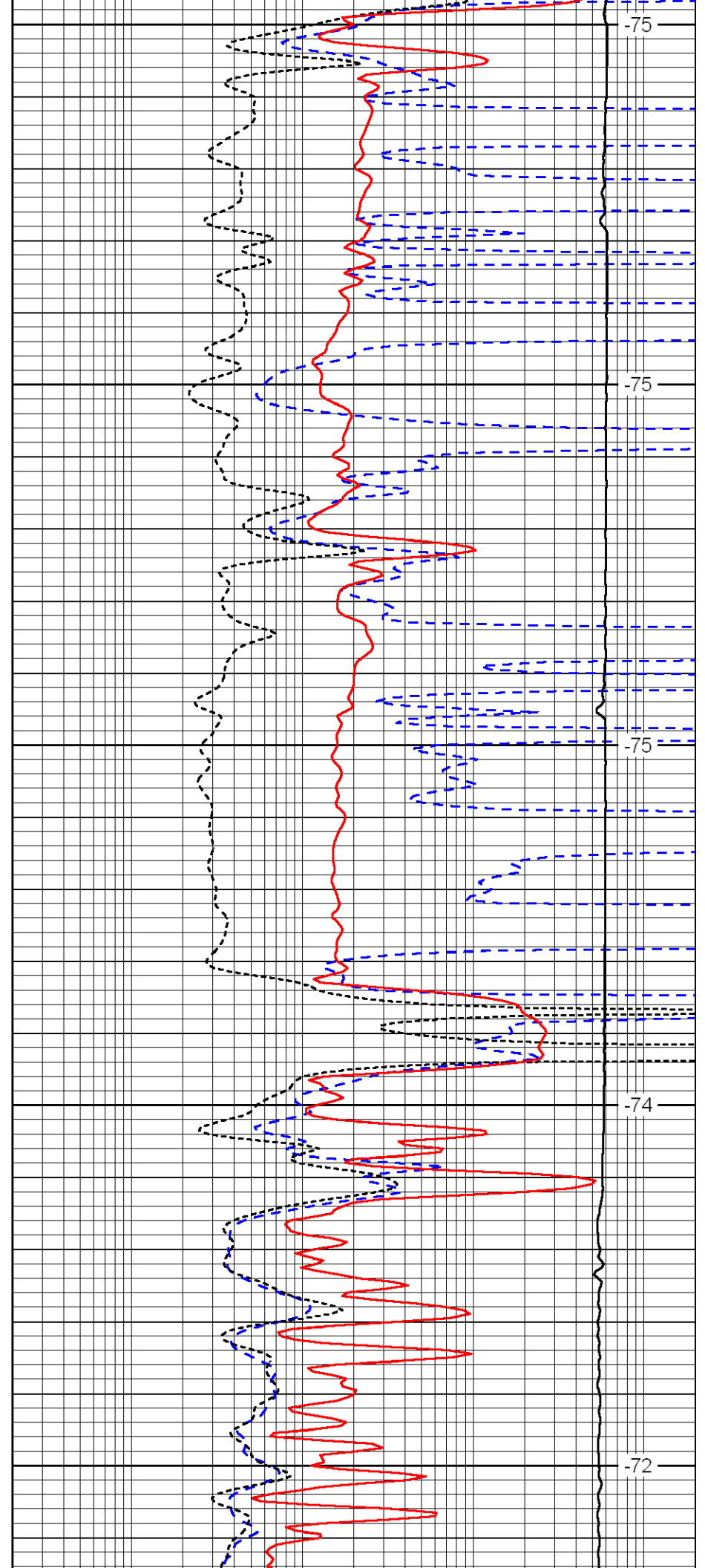
2150

2200

2250

2300

2350



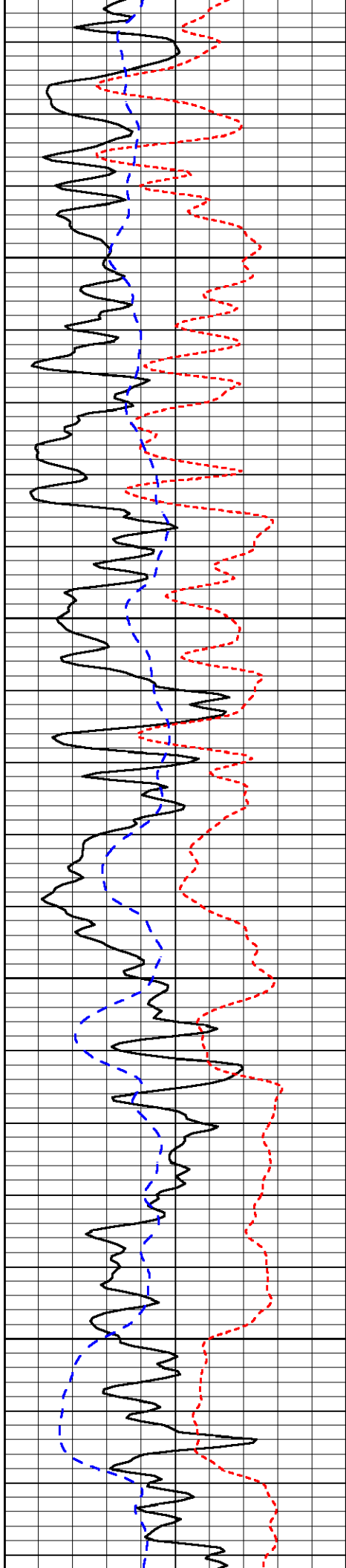
-75

-75

-75

-74

-72

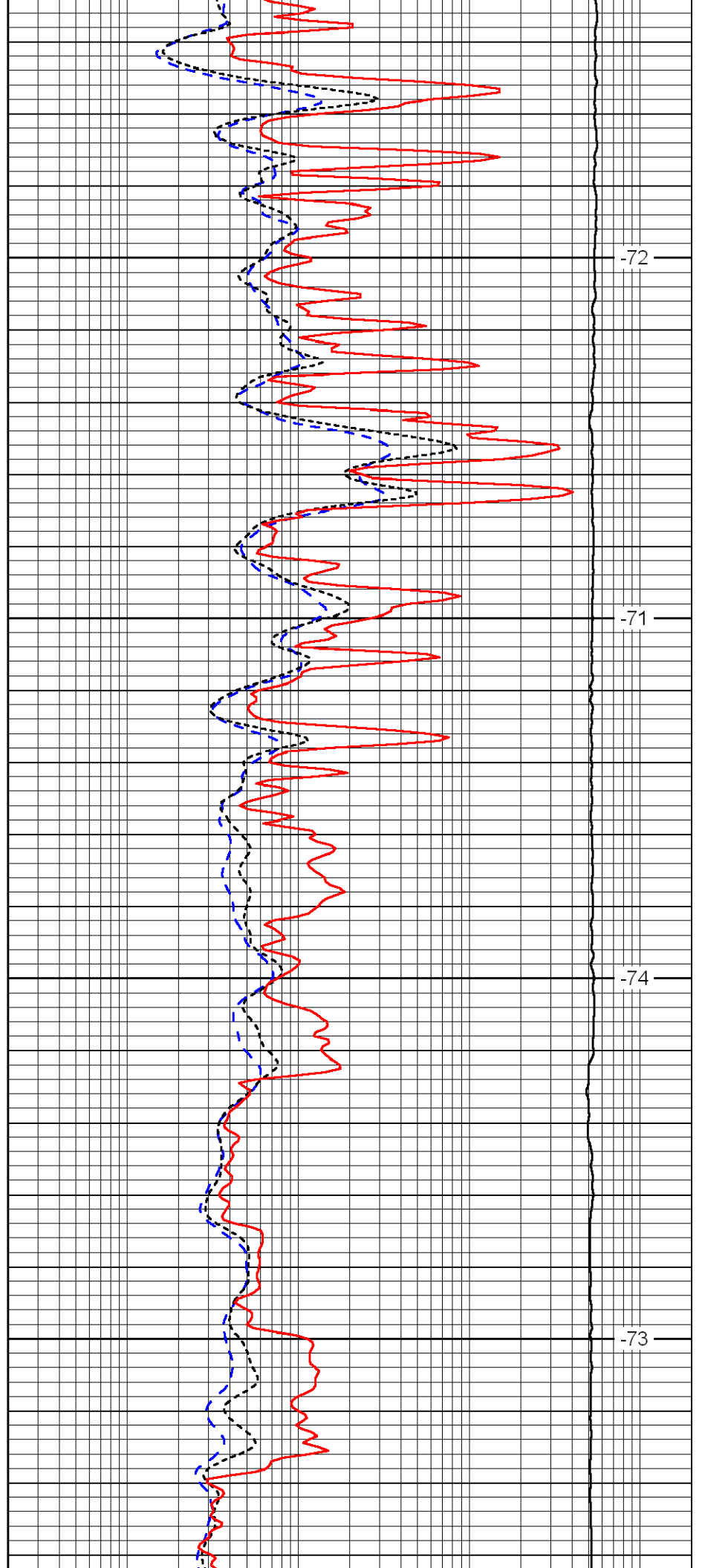


2400

2450

2500

2550

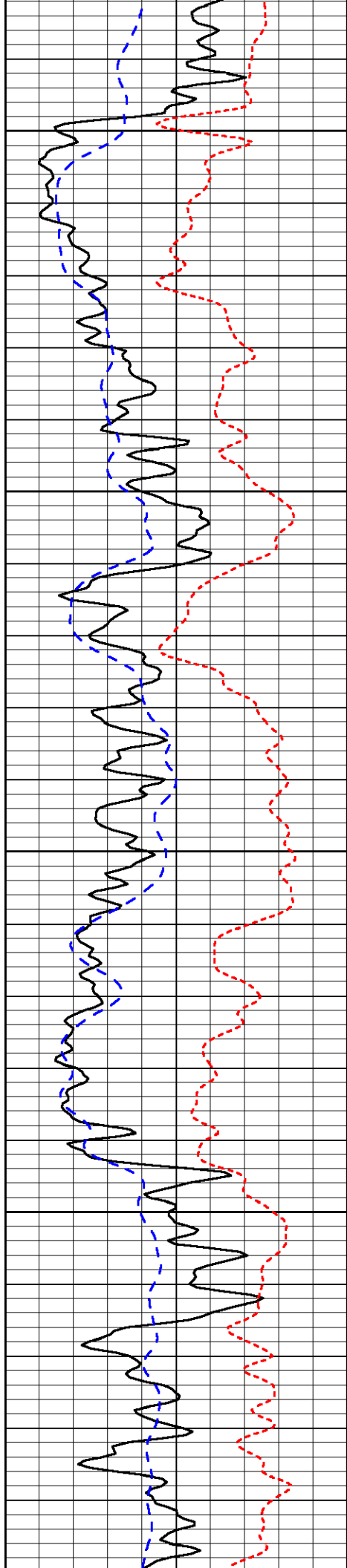


-72

-71

-74

-73



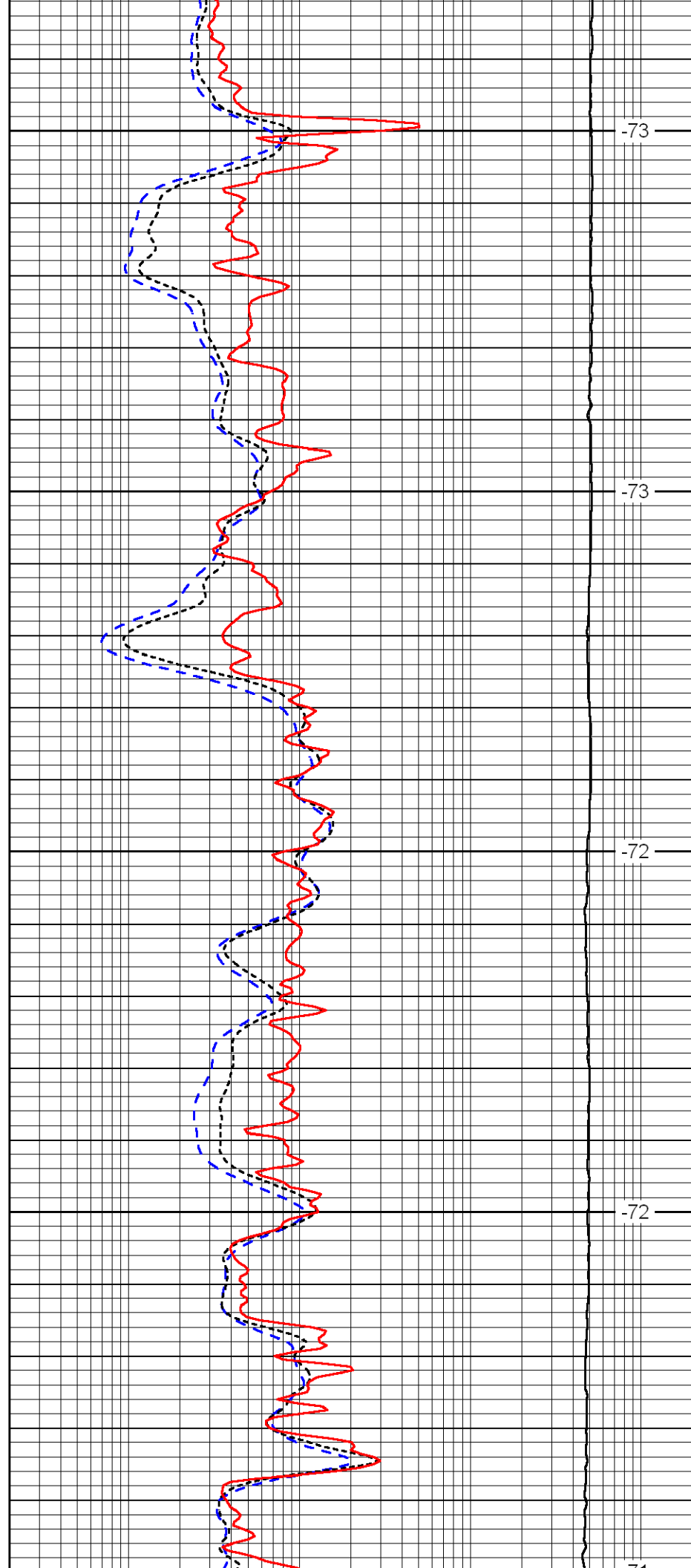
2600

2650

2700

2750

2800



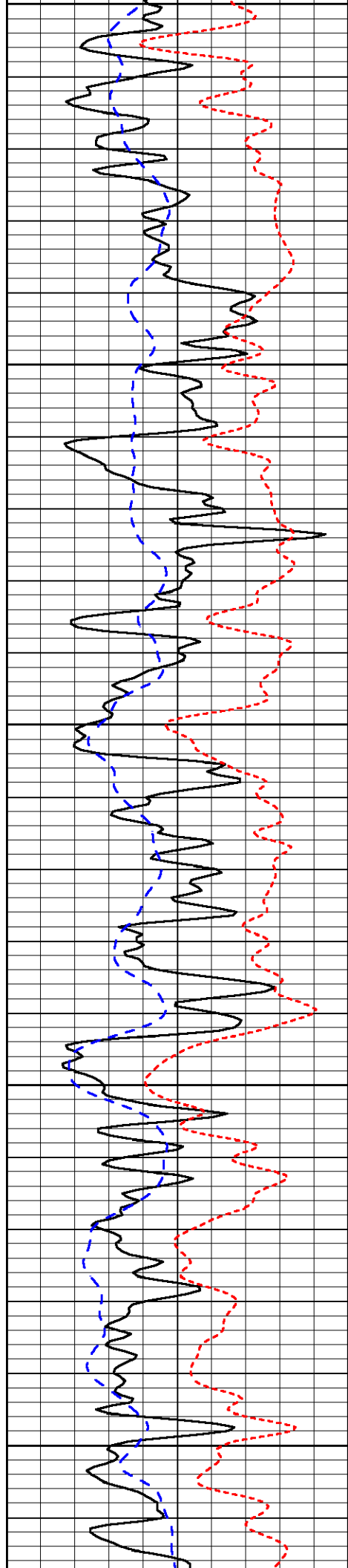
-73

-73

-72

-72

-71



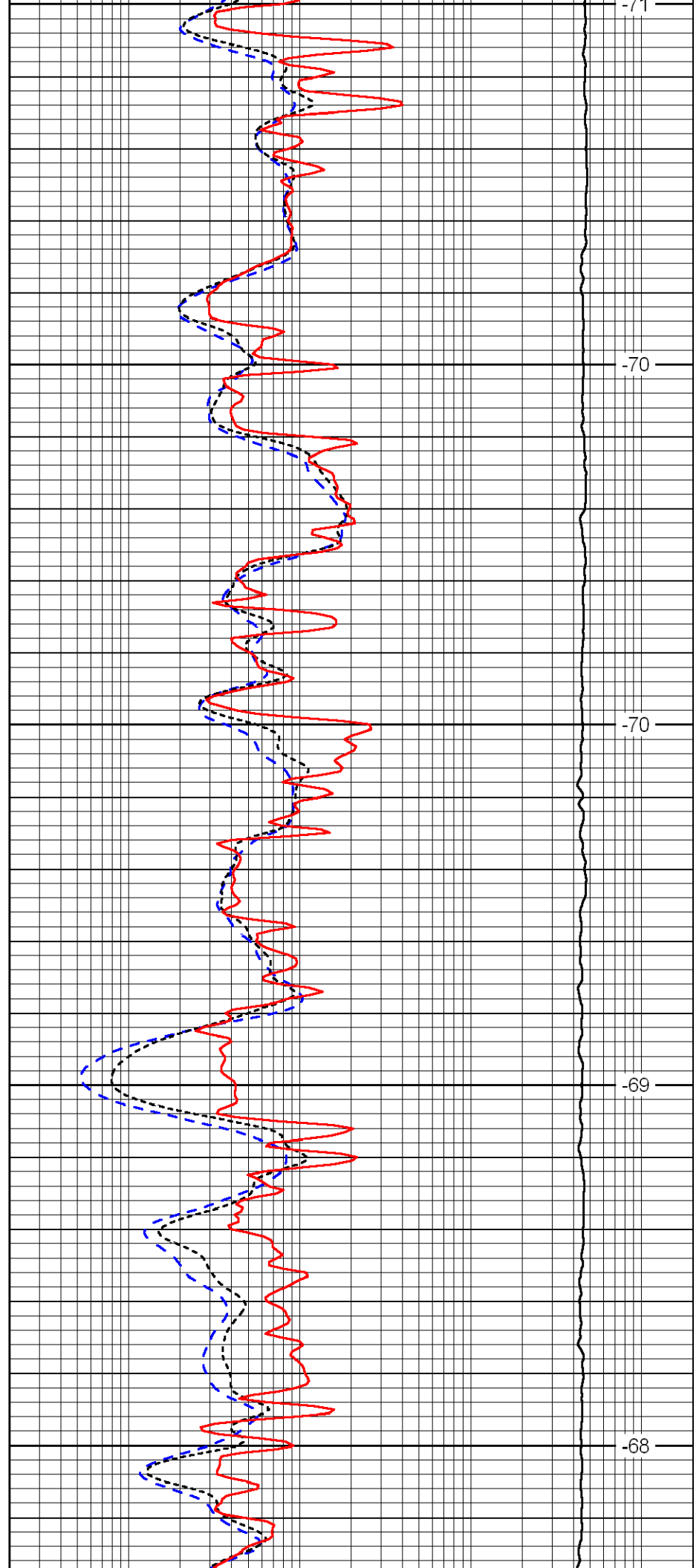
2800

2850

2900

2950

3000



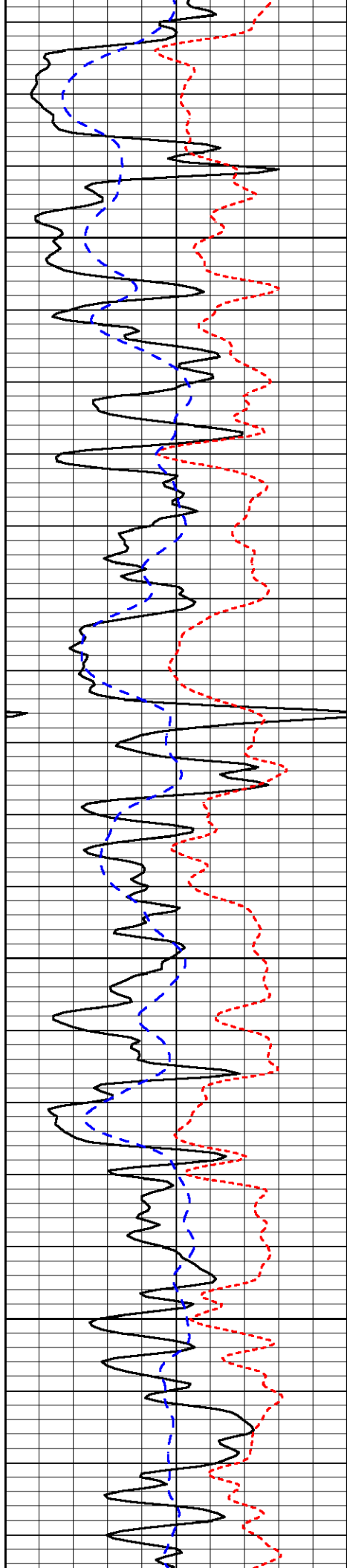
-71

-70

-70

-69

-68

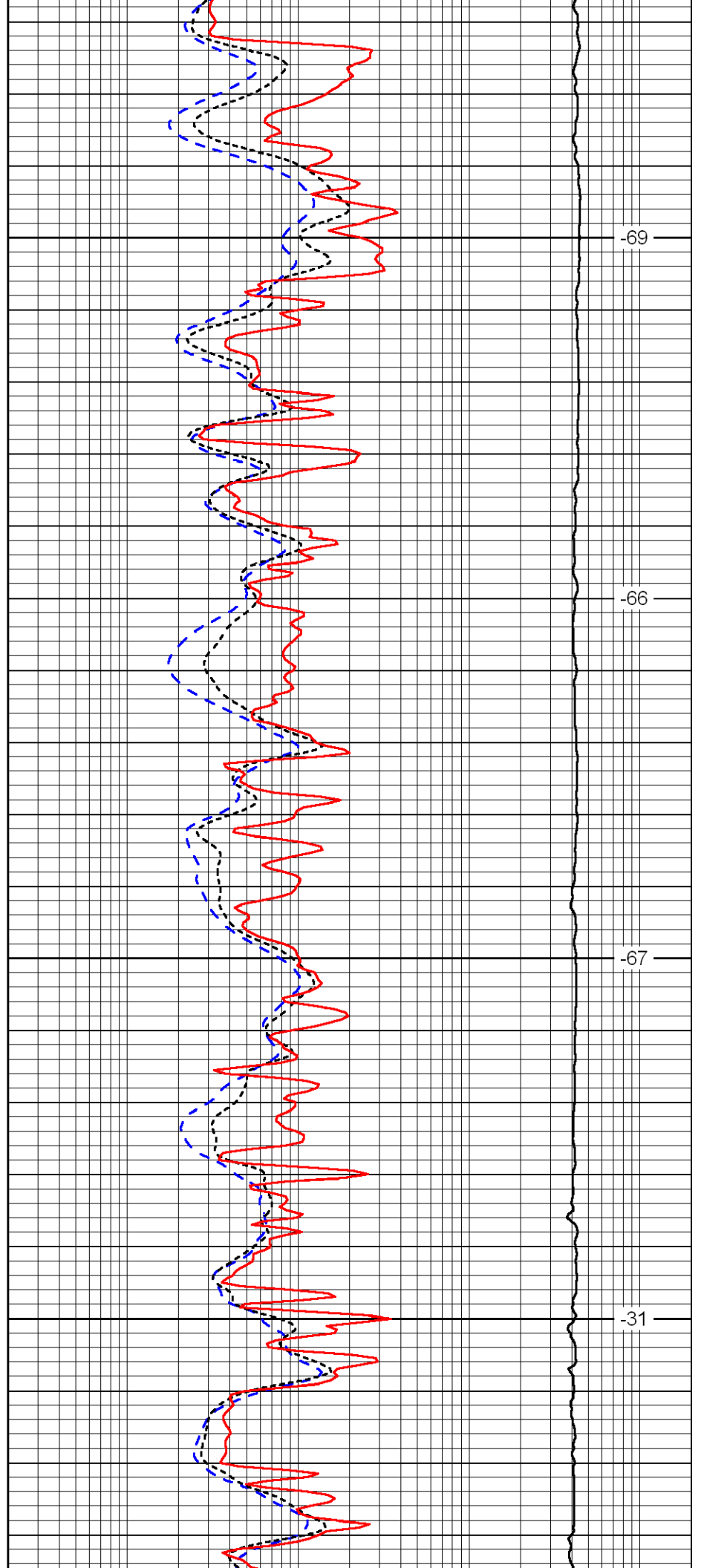


3050

3100

3150

3200

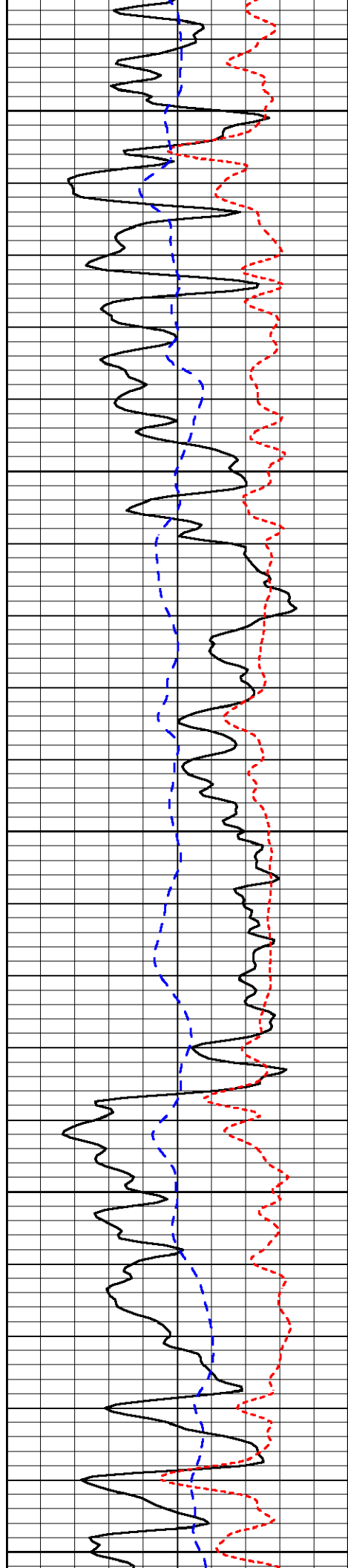


-69

-66

-67

-31



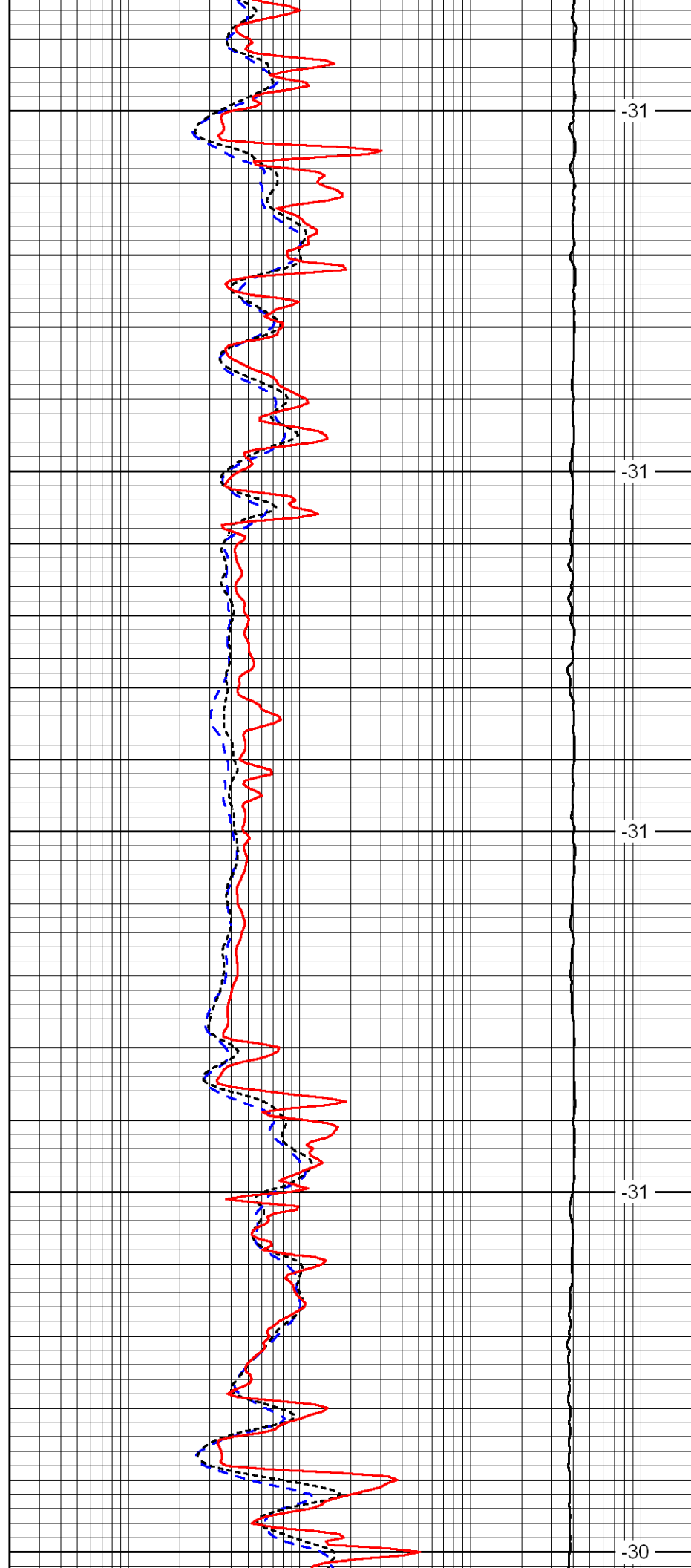
3250

3300

3350

3400

3450



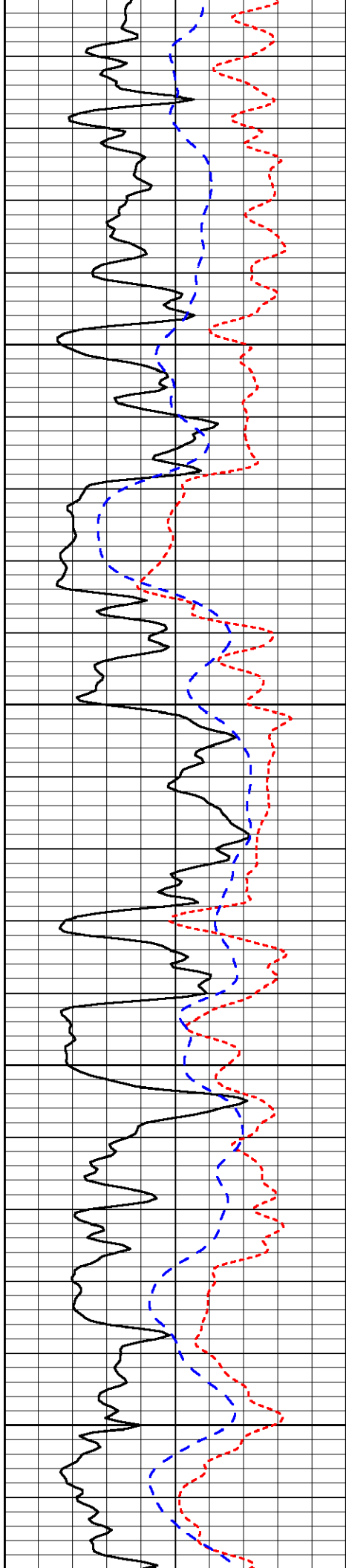
-31

-31

-31

-31

-30

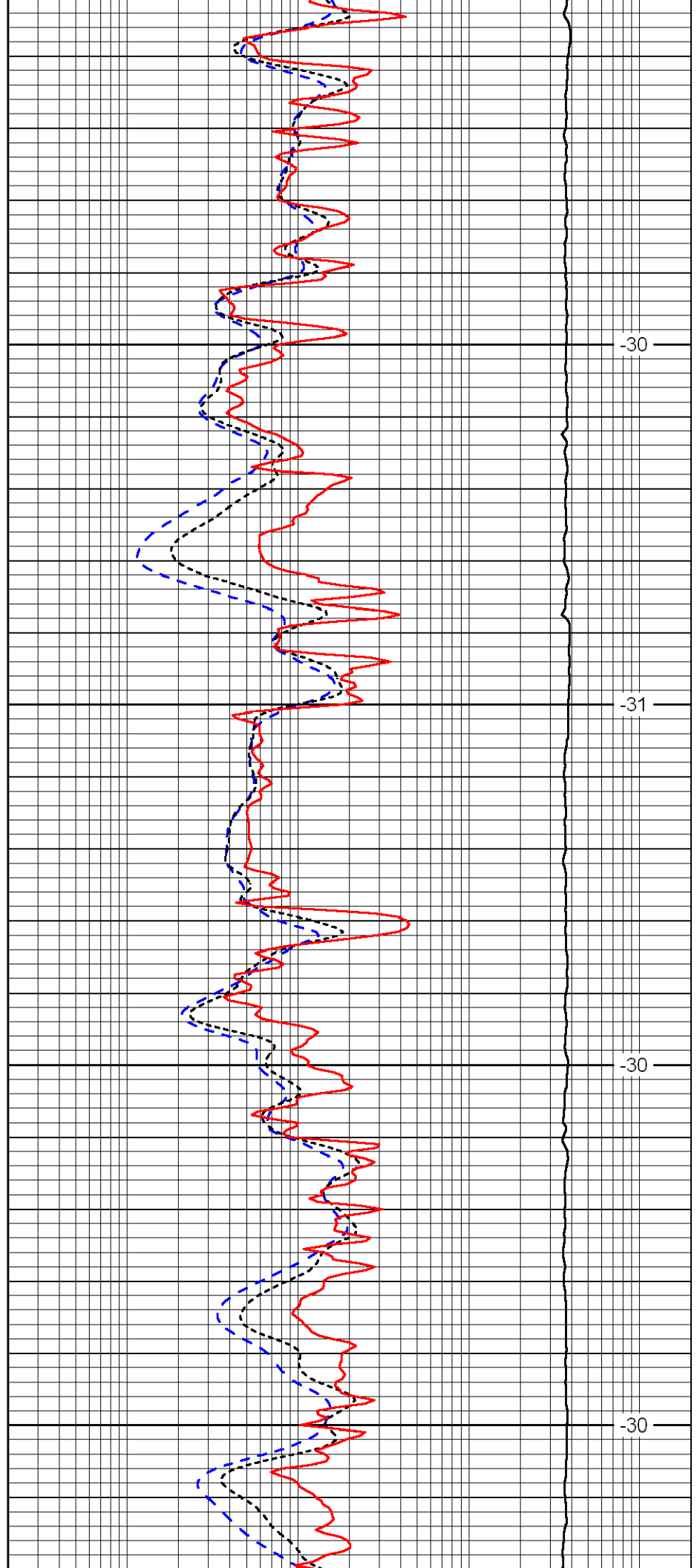


3500

3550

3600

3650

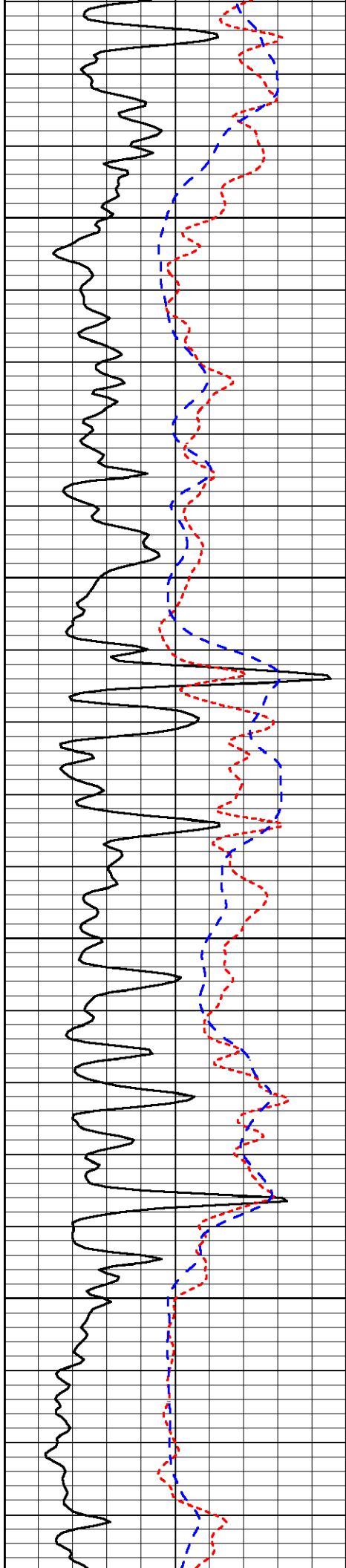


-30

-31

-30

-30

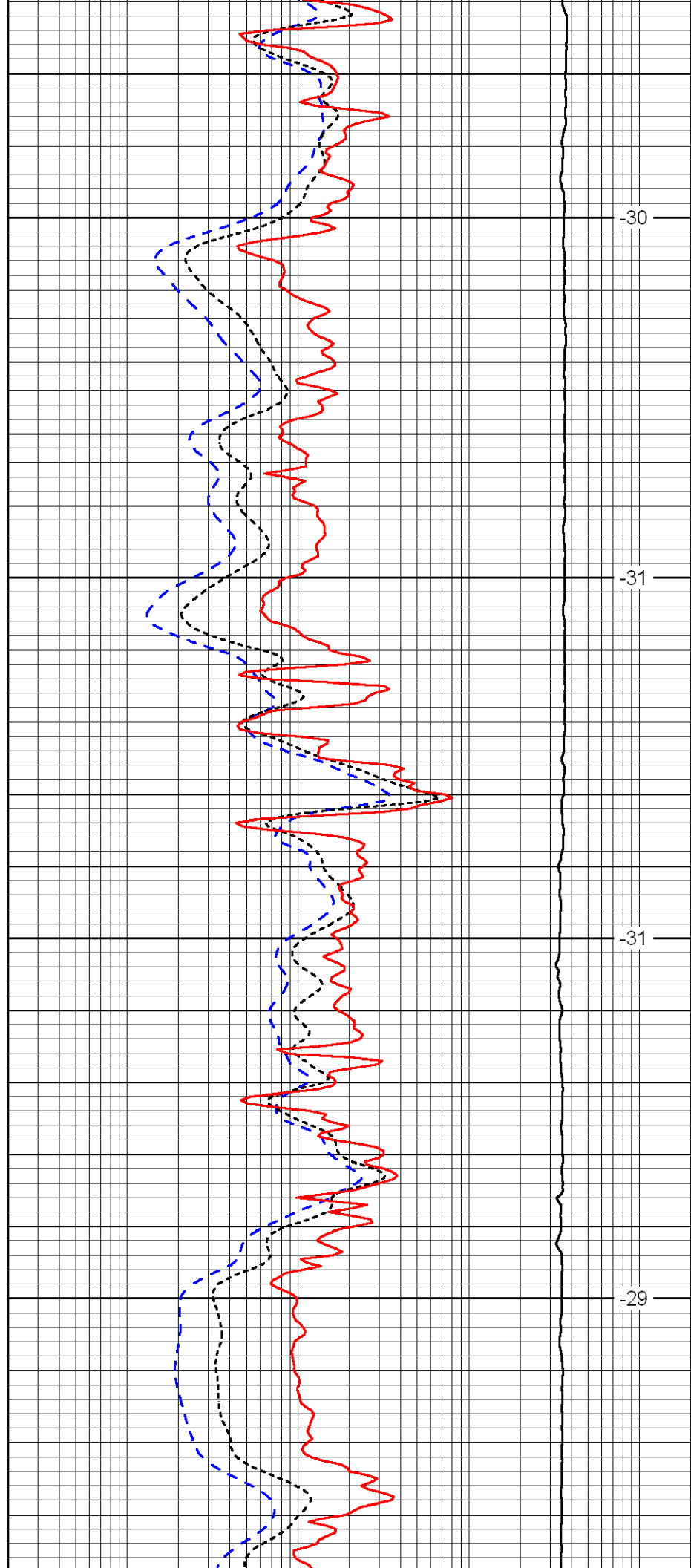


3700

3750

3800

3850

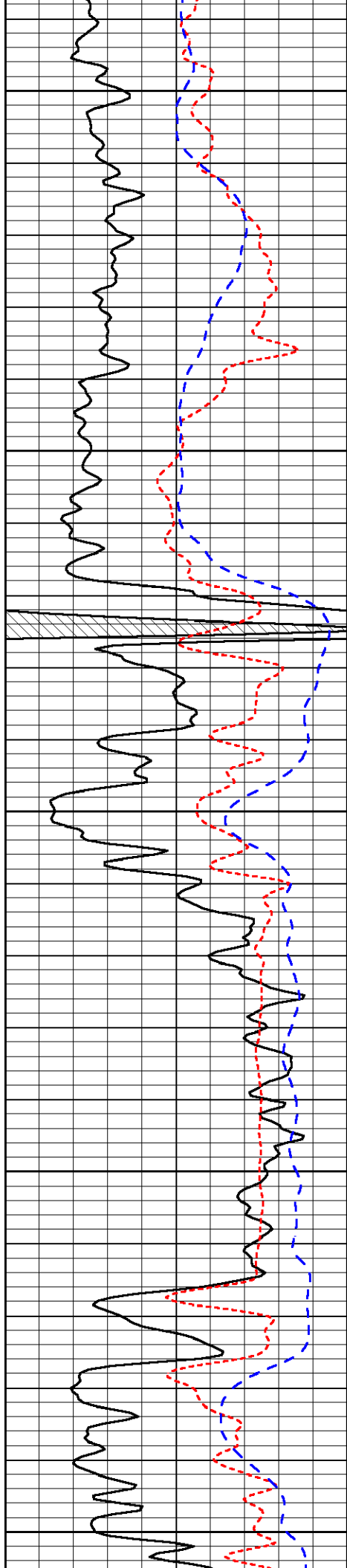


-30

-31

-31

-29



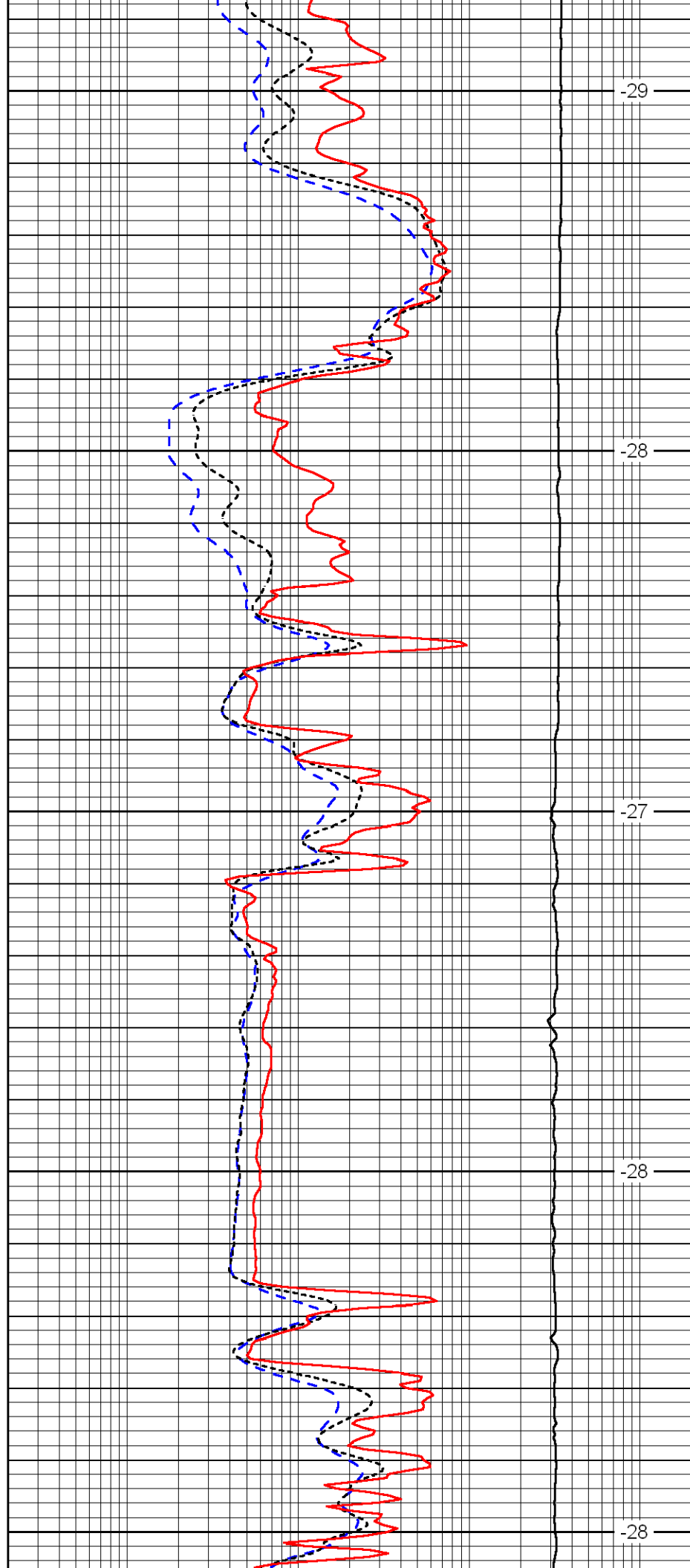
3900

3950

4000

4050

4100



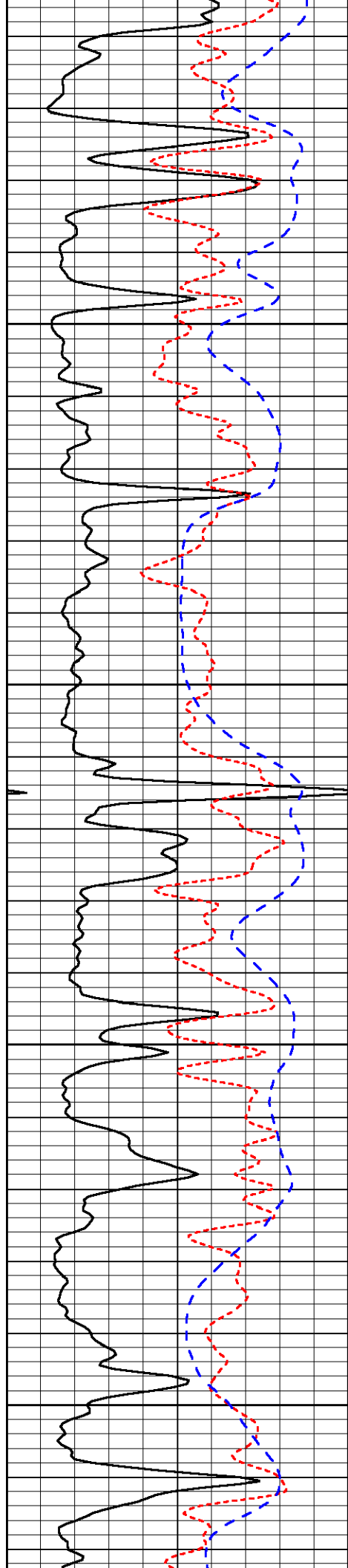
-29

-28

-27

-28

-28

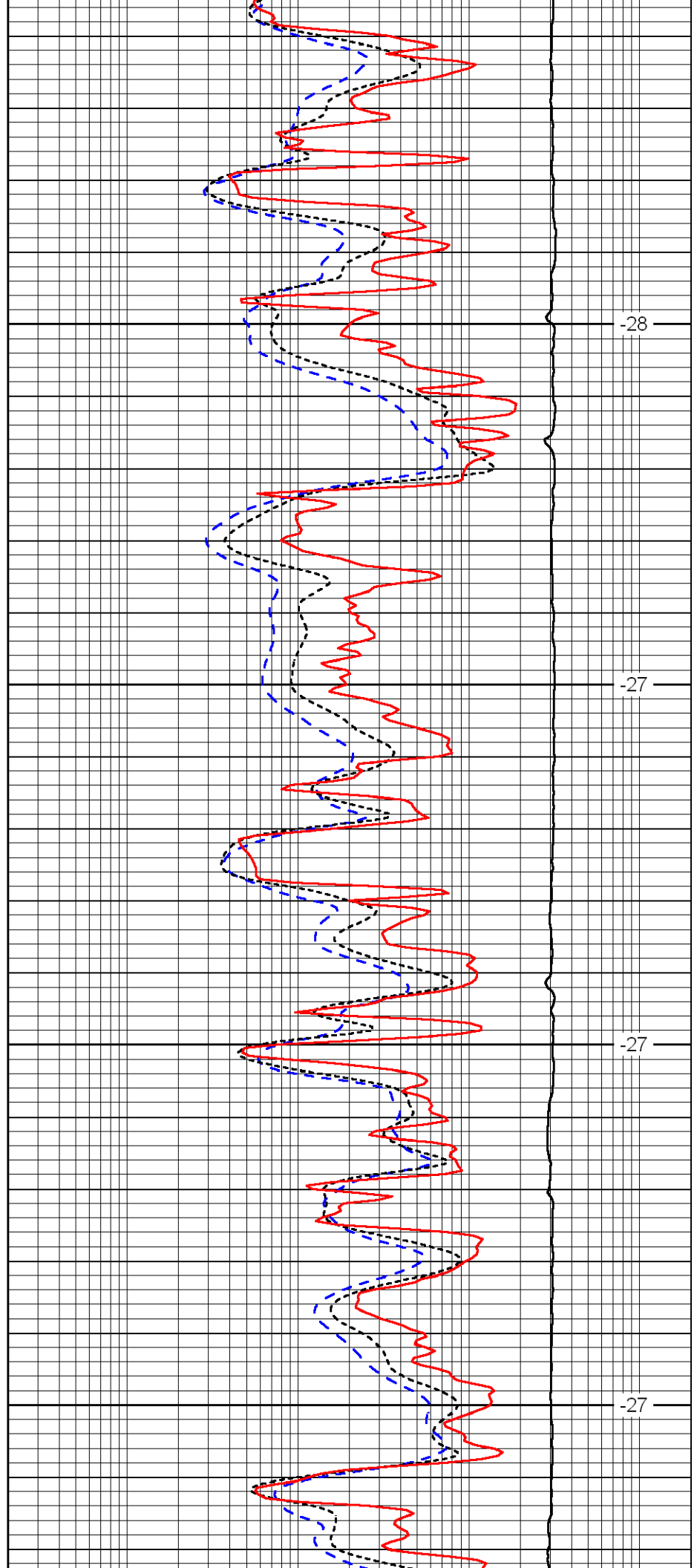


4150

4200

4250

4300

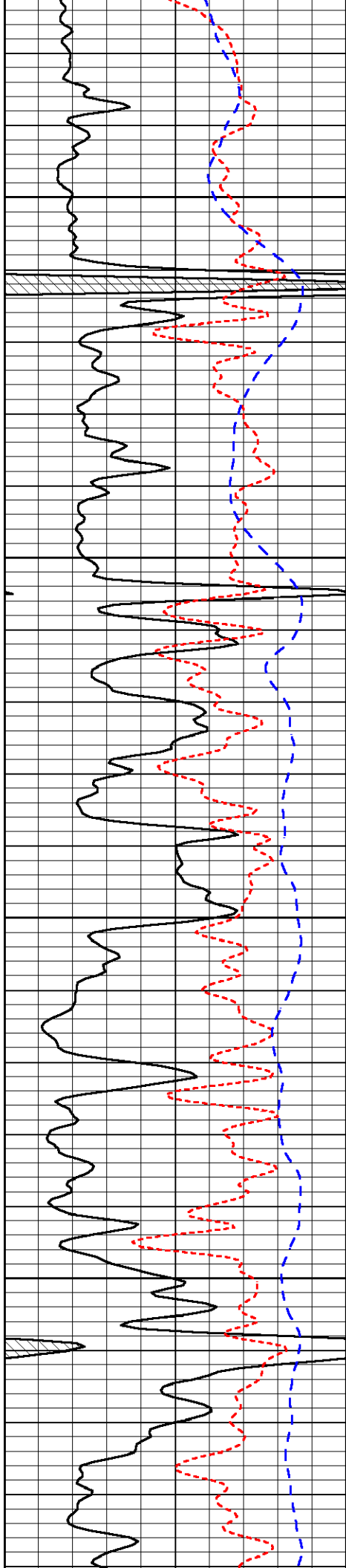


-28

-27

-27

-27

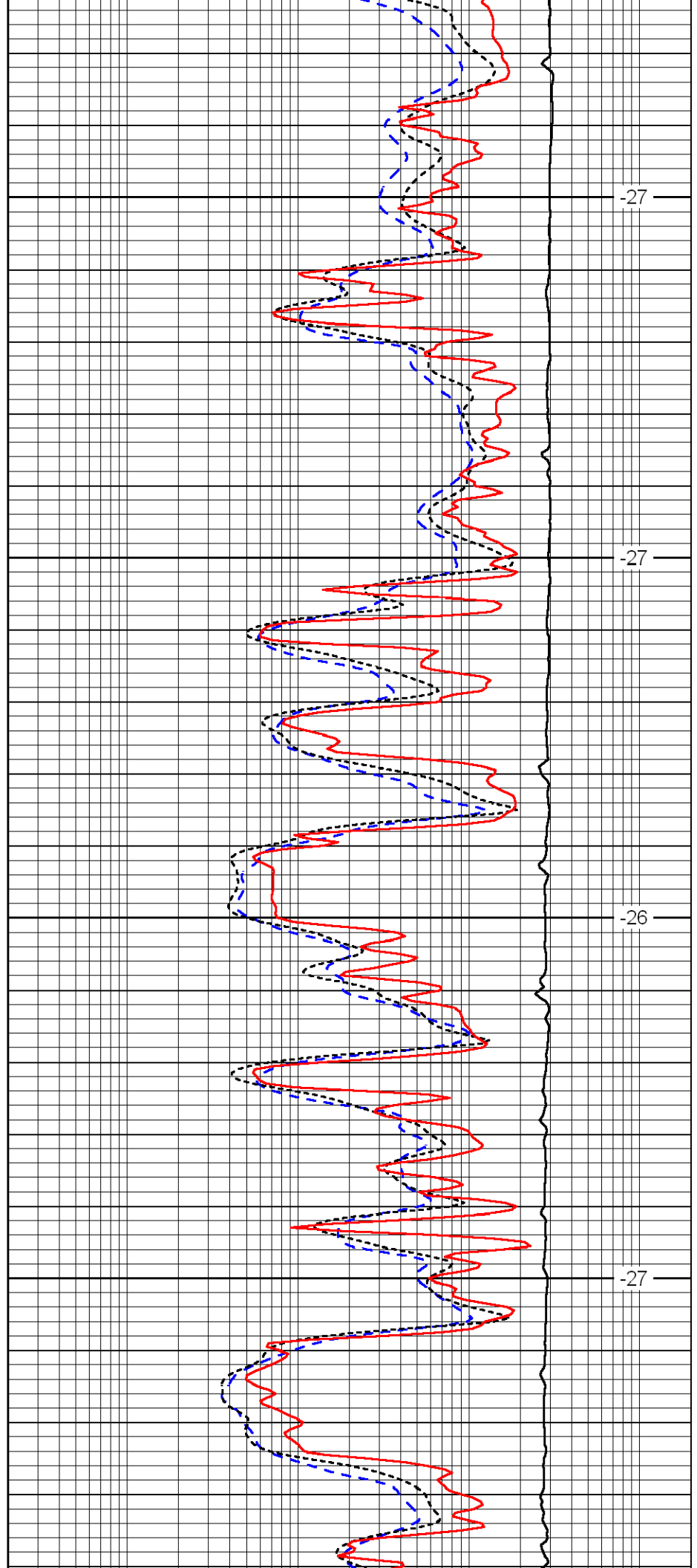


4350

4400

4450

4500

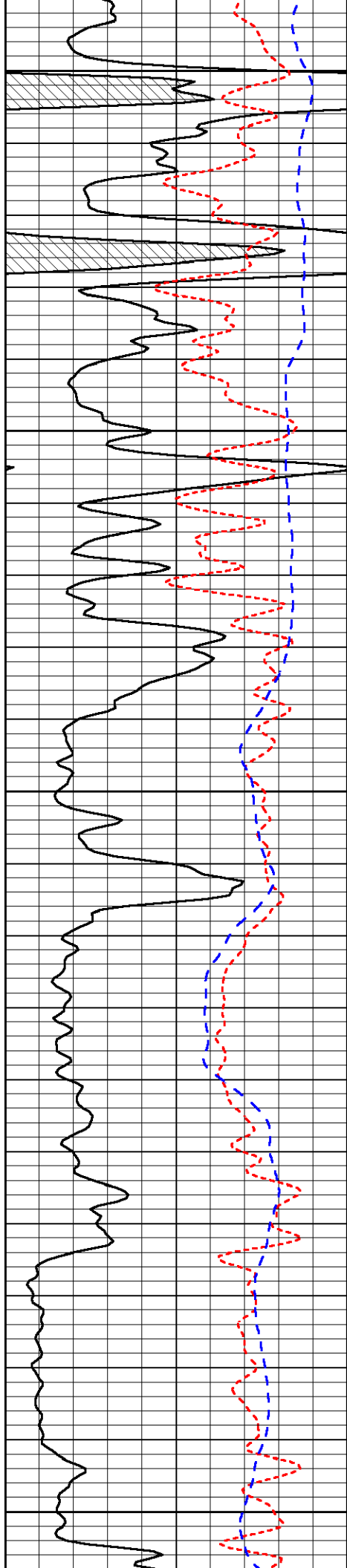


-27

-27

-26

-27



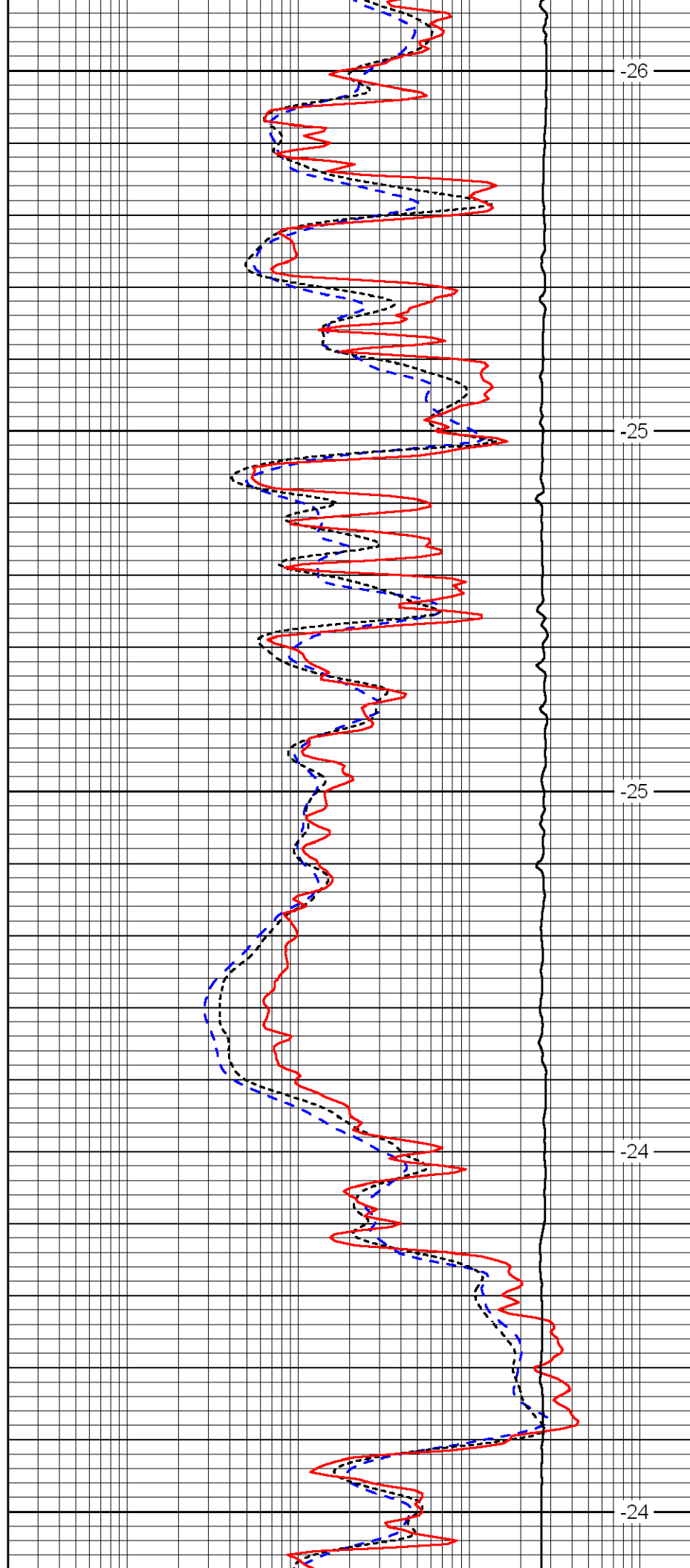
4550

4600

4650

4700

4750



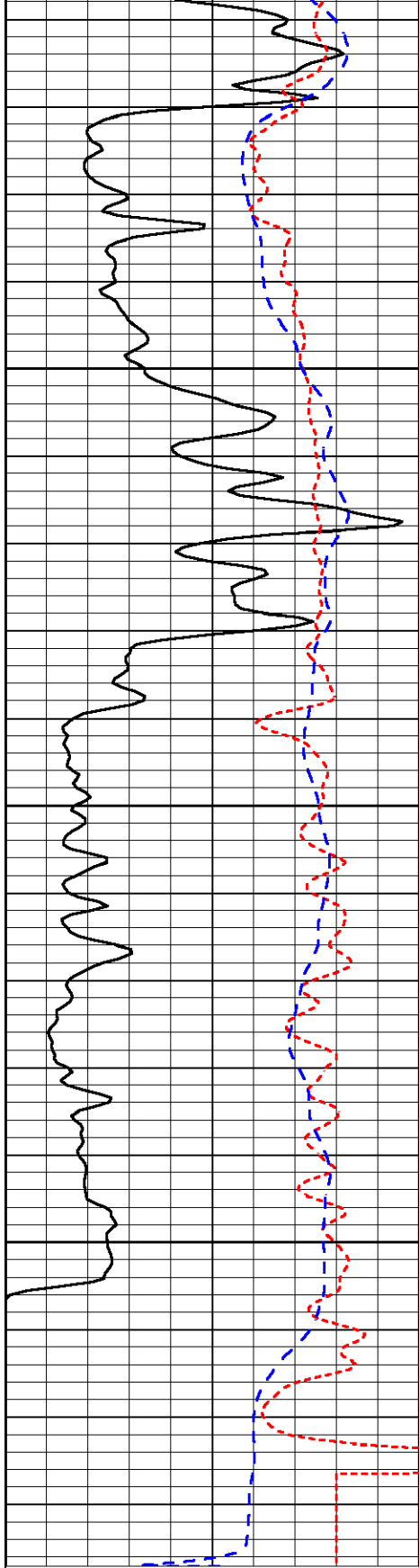
-26

-25

-25

-24

-24

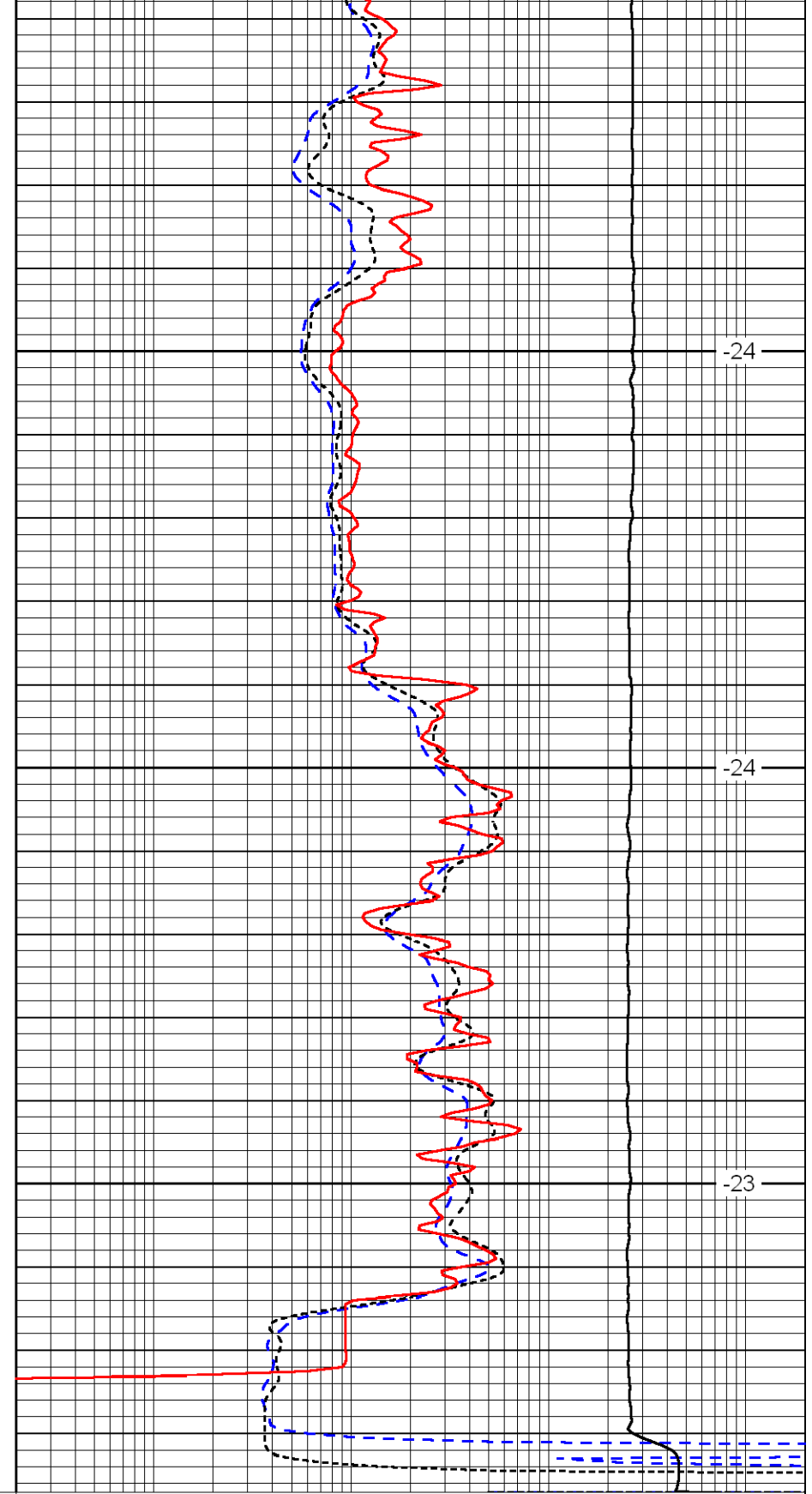


0	Gamma Ray	150
-160	RXO/RT	40
-200	SP	0

4800

4850

4900



-24

-24

-23

0.2	Deep Resistivity	2000
0.2	Medium Resistivity	2000
0.2	Shallow Resistivity	2000
10000	Line Tension	0

LSPD