



**SUPERIOR**  
Hays,  
Kansas

**MICRO  
LOG**

Company	CASTELLI EXPLORATION, INC.	Location:	API # : 15-033-21584-0000	Other Services
Well	GREGG #2-29		1380' FNL & 1650' FWL N/2 - NW - SE - NW	CDL/CNL DIL
Field	HAM	SEC 29	TWP 33S	RGE 16W
County	COMANCHE	State	KANSAS	
Permanent Datum	GROUND LEVEL	Elevation	1778	
Log Measured From	KELLY BUSHING & A.G.L.		Elevation	
Drilling Measured From	KELLY BUSHING		K.B. 1786 D.F. 1784 G.L. 1778	

Date	6/4/12
Run Number	TWO
Depth Driller	5170
Depth Logger	5172
Bottom Logged Interval	5170
Top Log Interval	3800
Casing Driller	13 3/8" @ 343
Casing Logger	342
Bit Size	7 7/8
Type Fluid in Hole	CHEMICAL MUD
Density / Viscosity	9.2/44
pH / Fluid Loss	9.5/9.6
Source of Sample	FLOWLINE
Rin @ Meas. Temp	1.50 @ 82F
Rmf @ Meas. Temp	1.13 @ 82F
Rmc @ Meas. Temp	1.80 @ 82F
Source of Rmf / Rmc	MEASURED
Rin @ BHT	0.97 @ 127F
Time Circulation Stopped	2 HOURS
Time Logger on Bottom	
Maximum Recorded Temperature	127F
Equipment Number	680
Location	HAYS, KS.
Recorded By	JEFF GRONEMEG
Witnessed By	RICK POPP

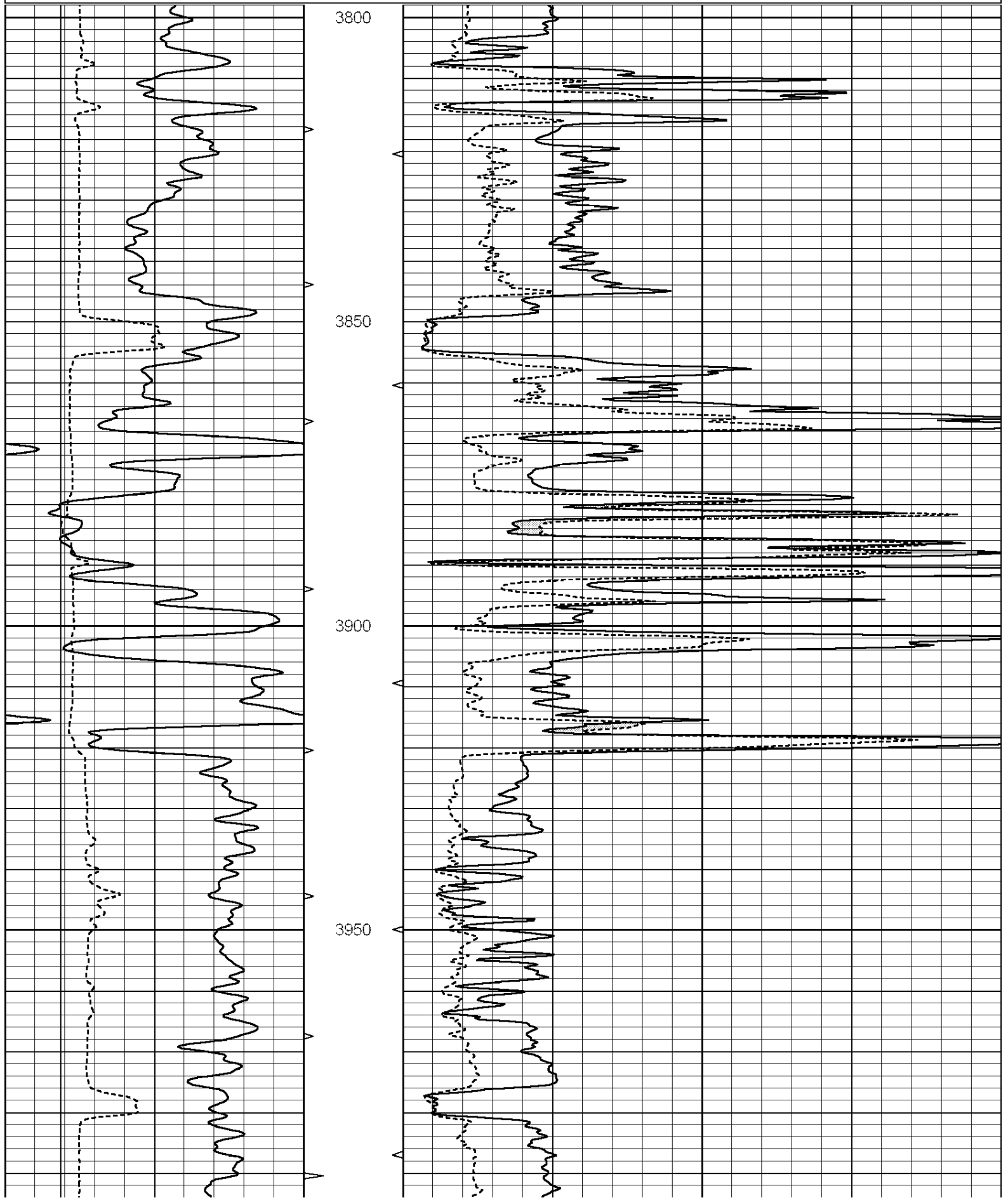
<<< Fold Here >>>

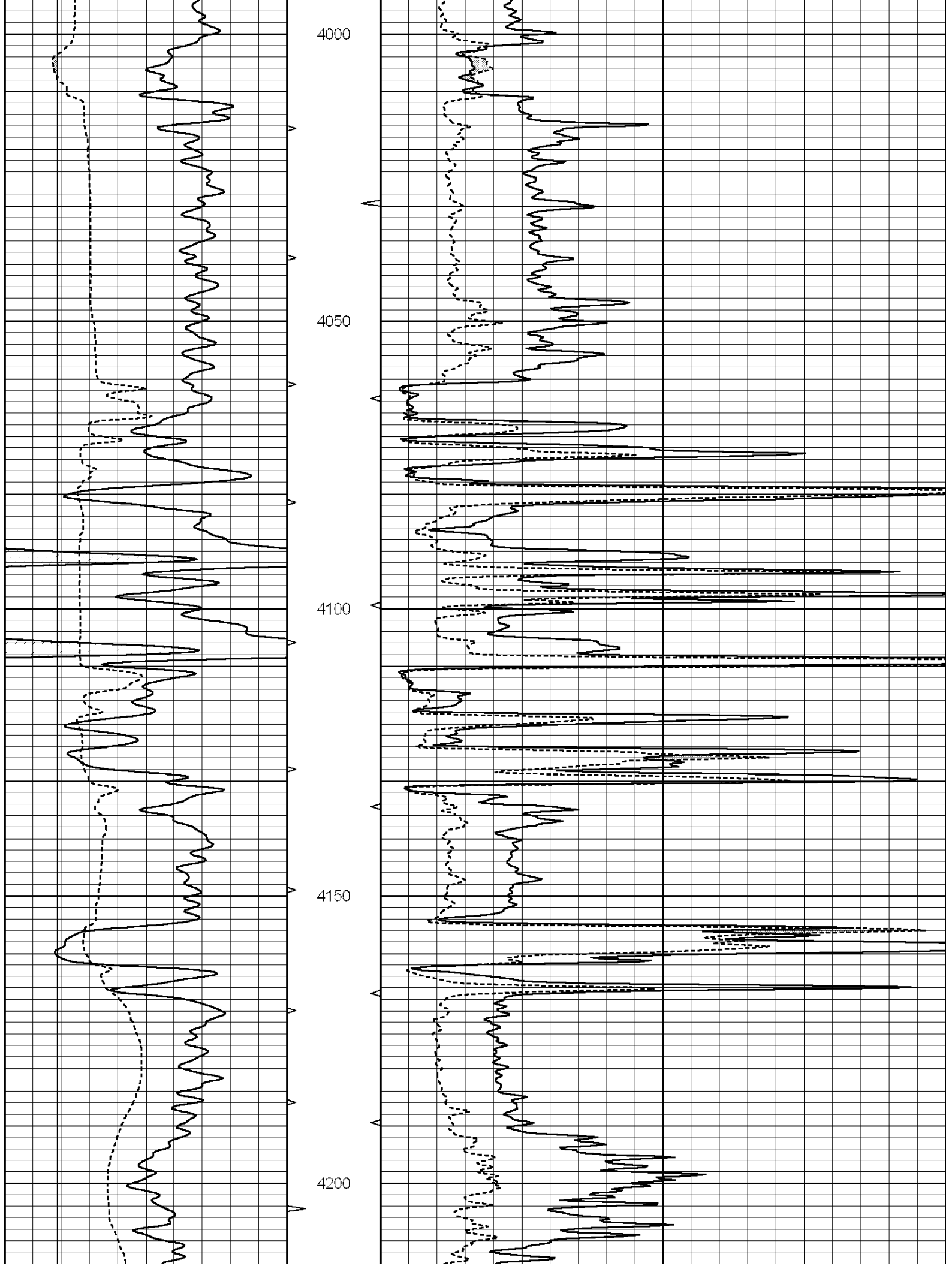
All interpretations are opinions based on inferences from electrical or other measurements and we cannot and do not guarantee the accuracy or correctness of any interpretation, and we shall not, except in the case of gross or willful negligence on our part, be liable or responsible for any loss, costs, damages, or expenses incurred or sustained by anyone resulting from any interpretation made by any of our officers, agents or employees. These interpretations are also subject to our general terms and conditions set out in our current Price Schedule.

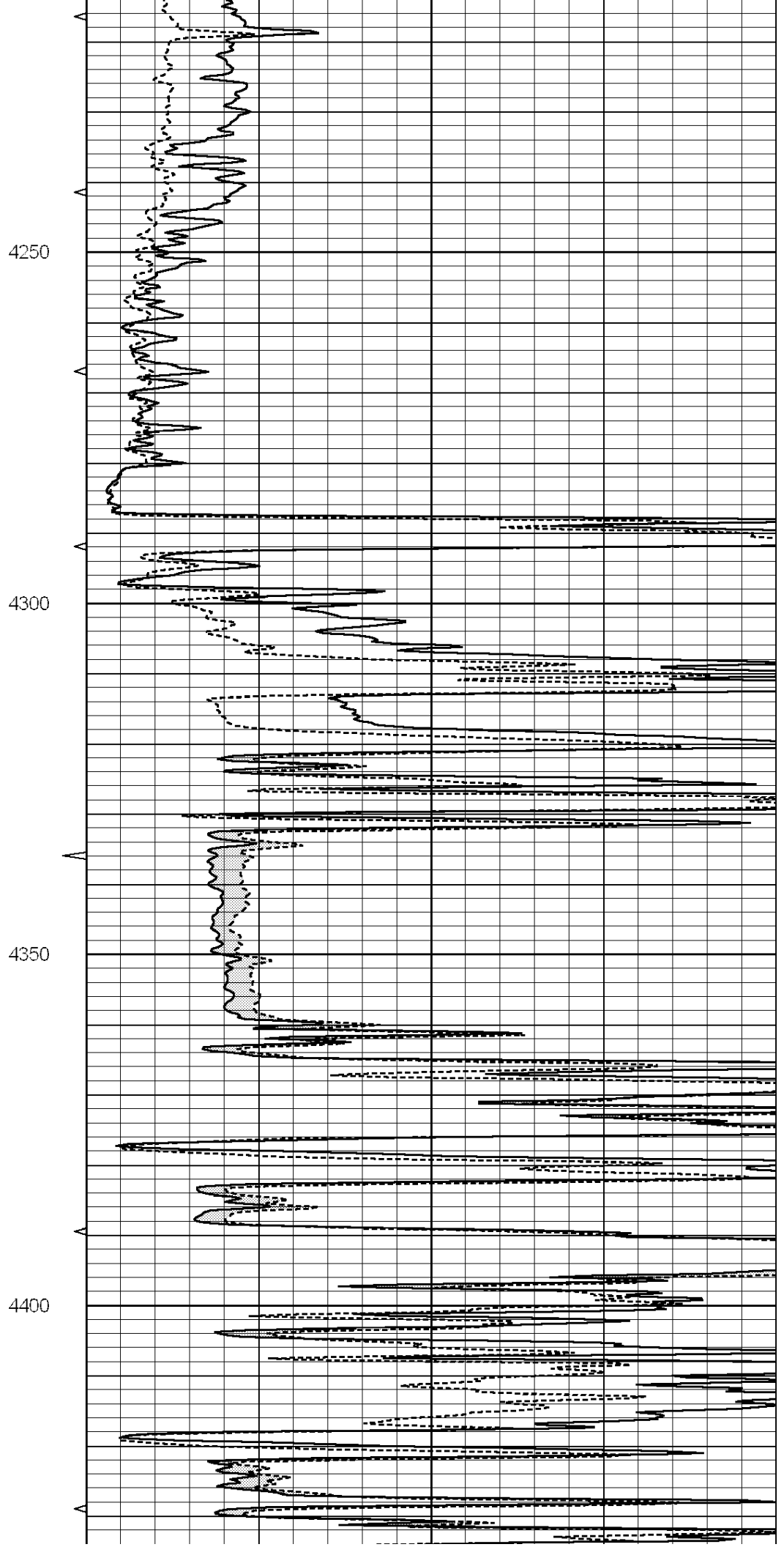
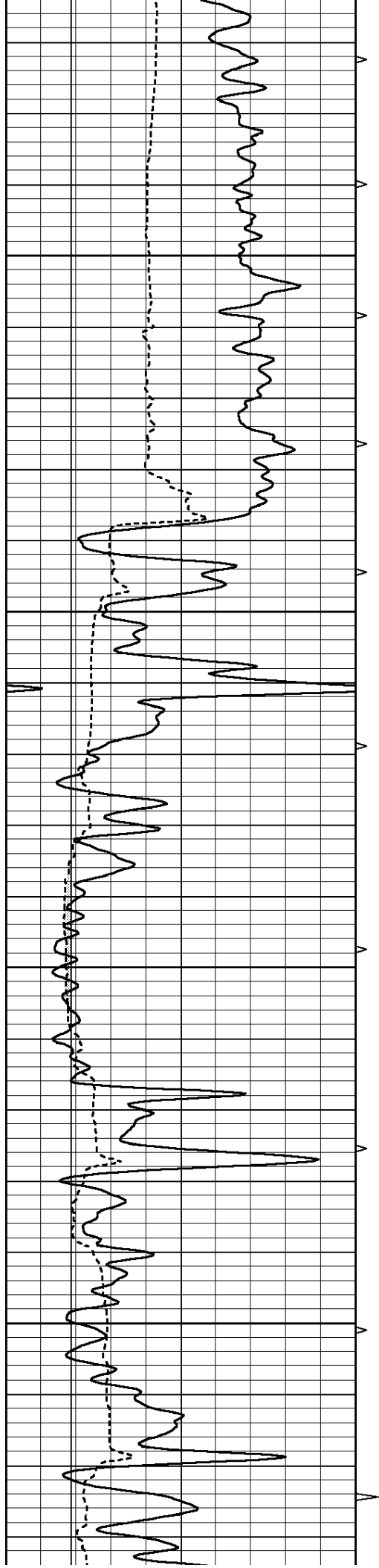
**Comments**

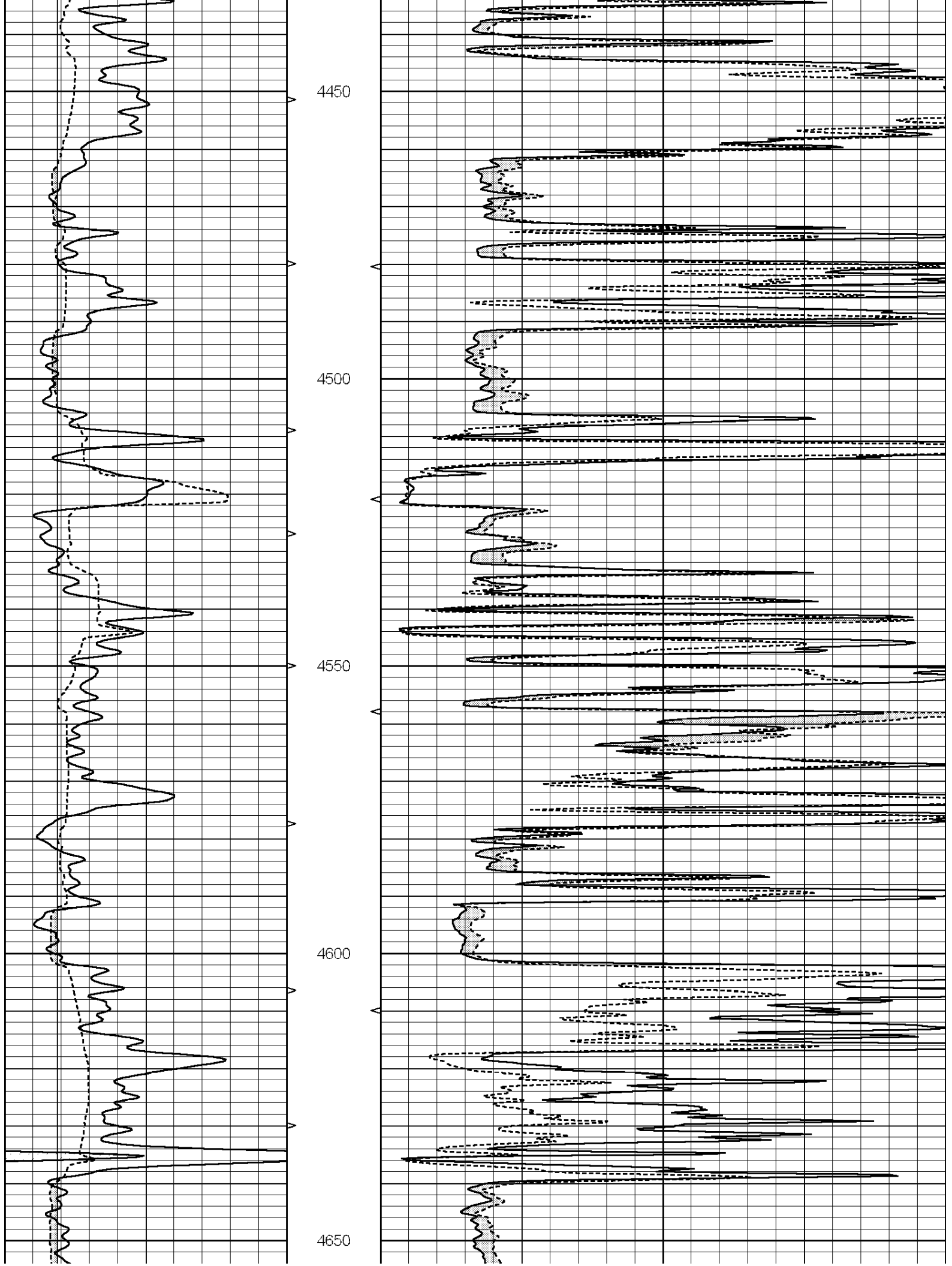
THANK YOU FOR USING SUPERIOR WELL SERVICE (785) 628-6395  
 DIRECTIONS  
 COLDWATER, KS - EAST ON HWY 160 TO RD 22 - SOUTH TO STOP SIGN  
 SOUTH AND EAST THROUGH THREE CATTLEGUARDS TO WHITE SHED  
 SOUTH INTO ON WEST SIDE OF SHED - GO EAST AND SOUTH AFTER SECOND  
 CATTLE GUARD

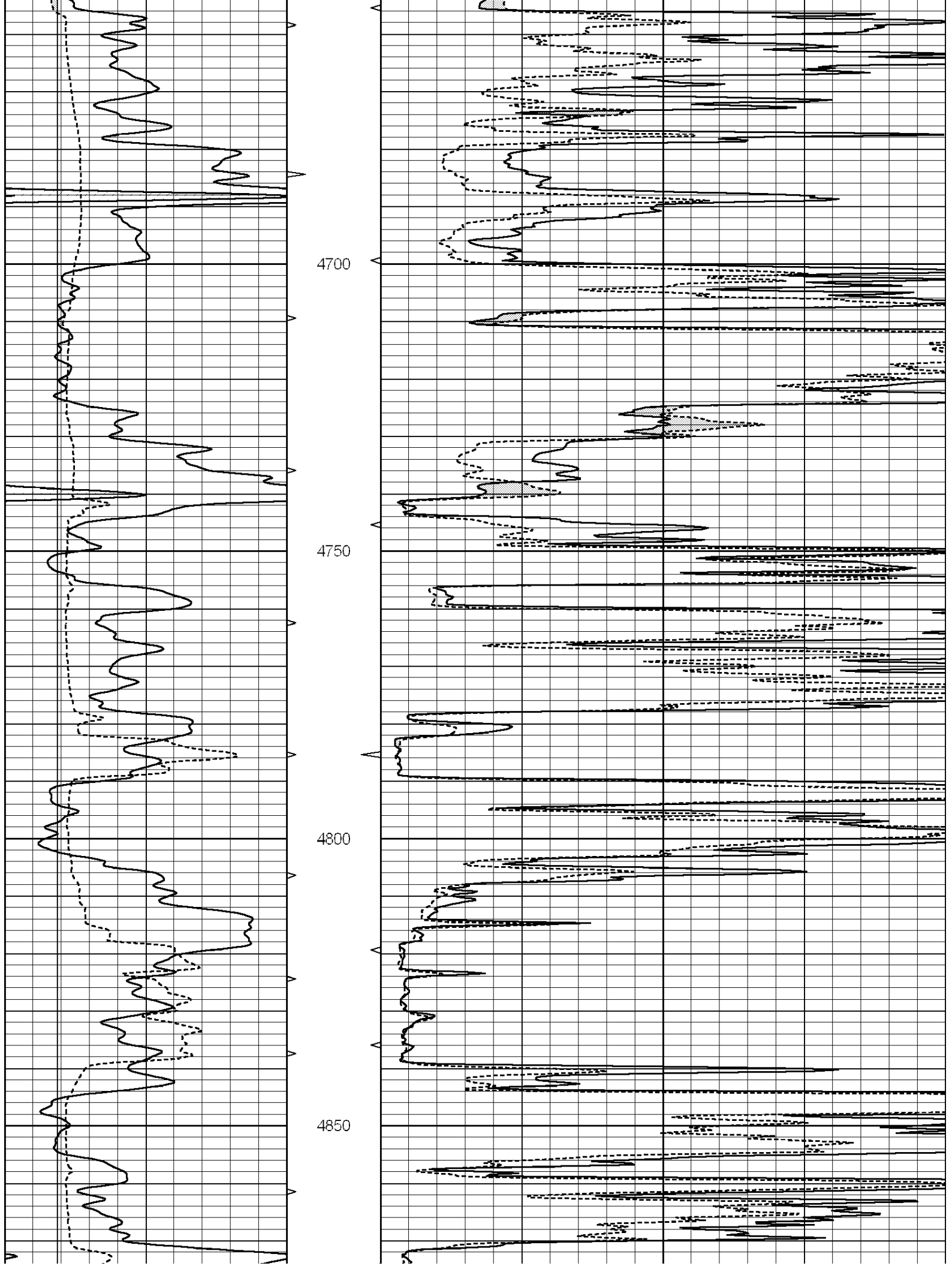
0	GAMMA RAY (GAPI)	150	ABHV	0	MEL1.5 (Ohm-m)	40
6	CALIPER (in)	16	10 (ft3)	0 0	MEL2.0 (Ohm-m)	40
			TBHV			
			0 (ft3)	10		

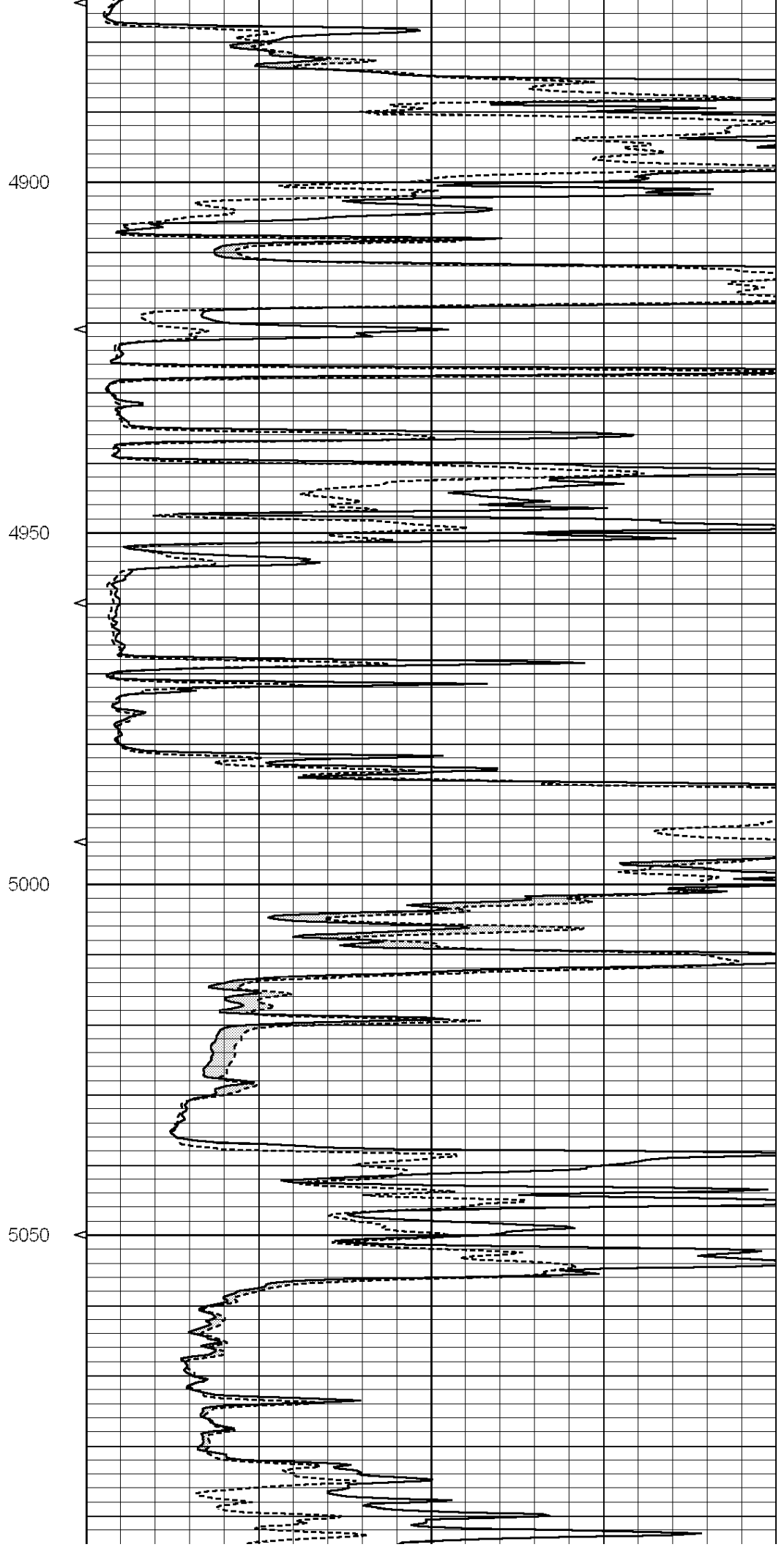
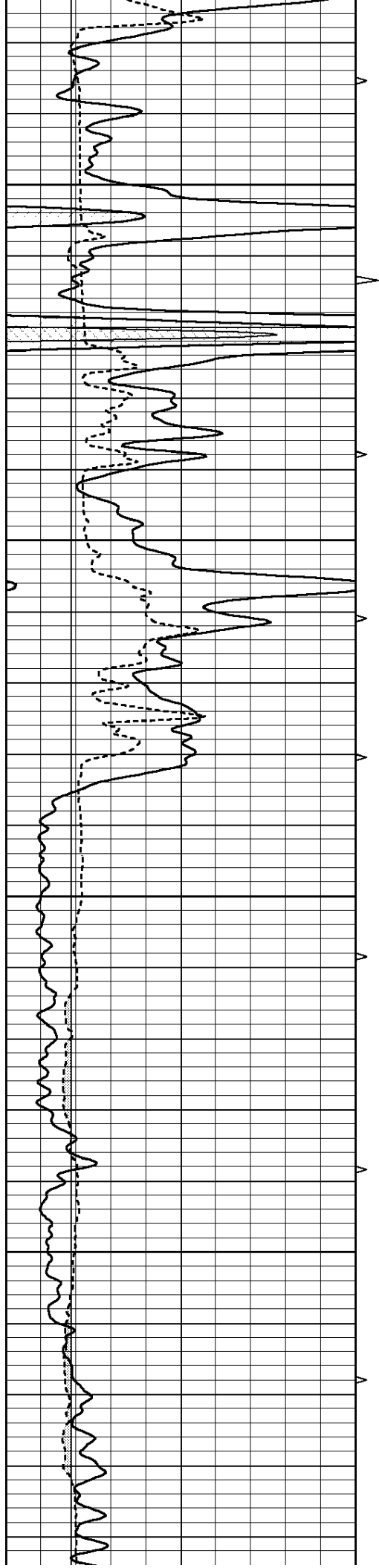


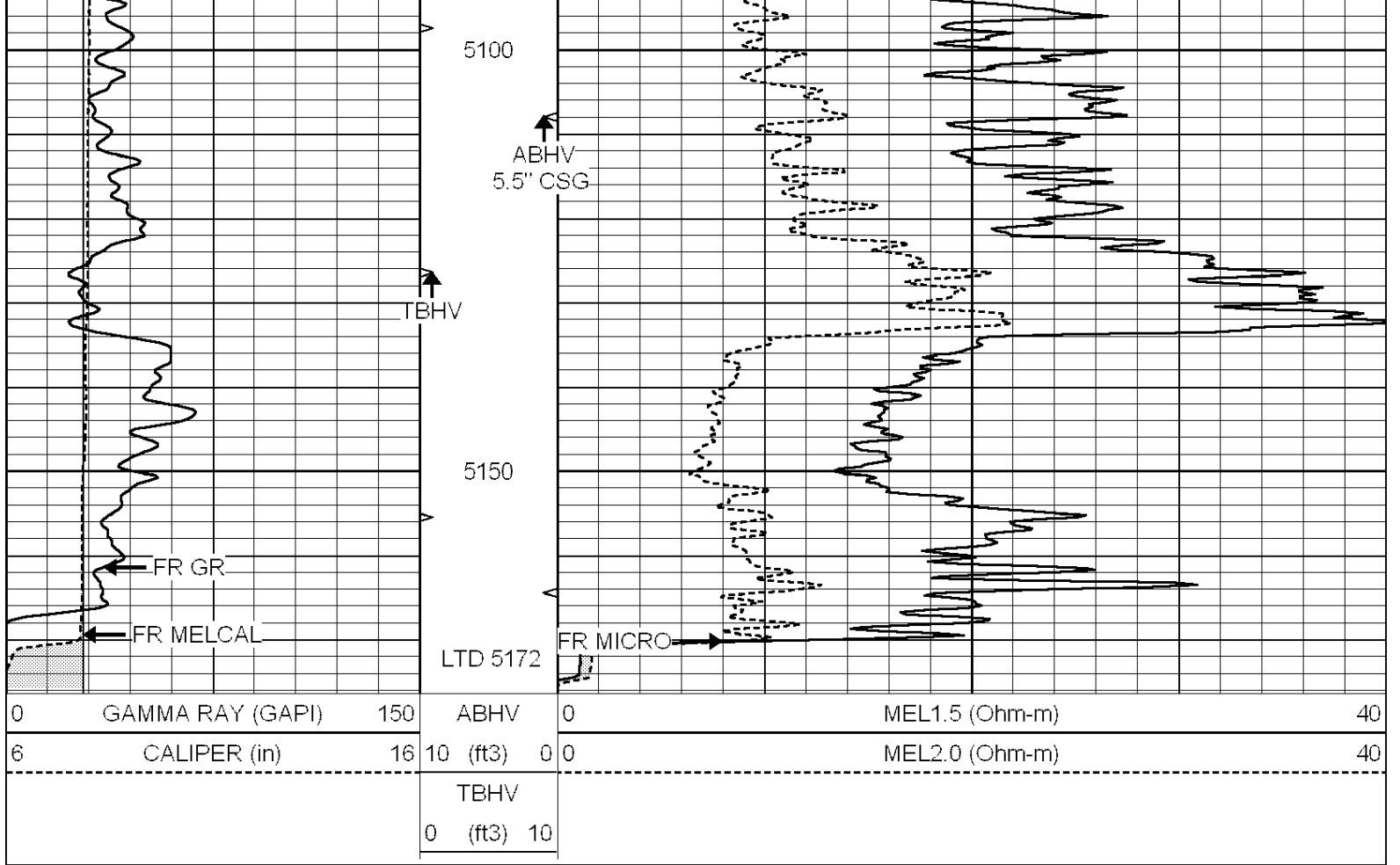










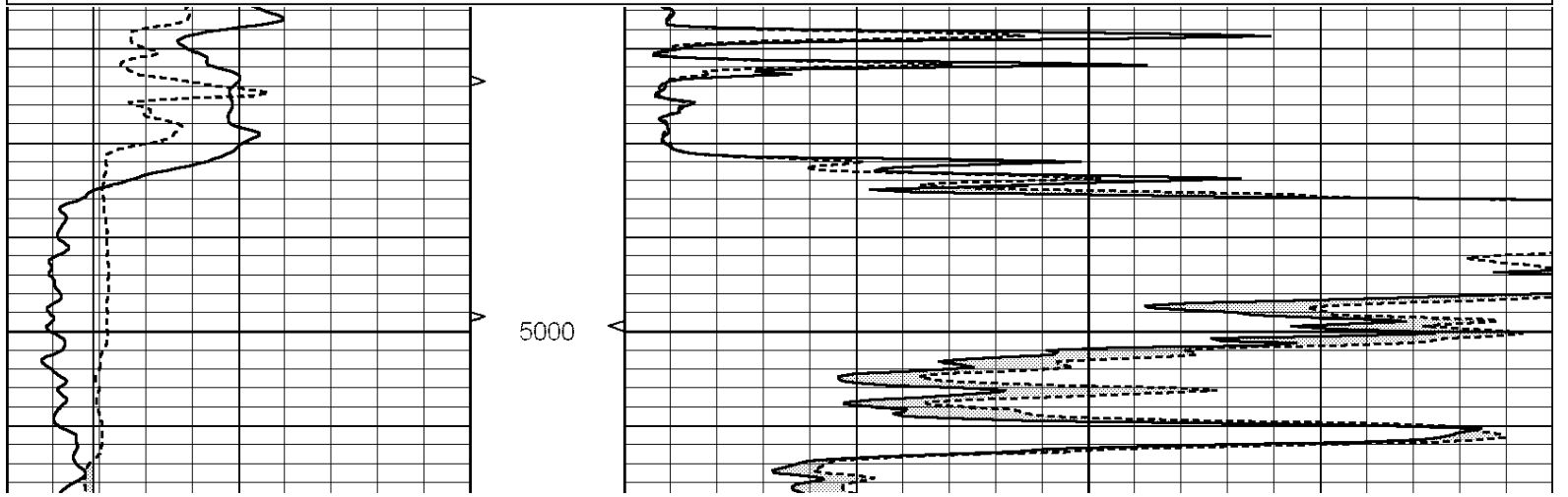


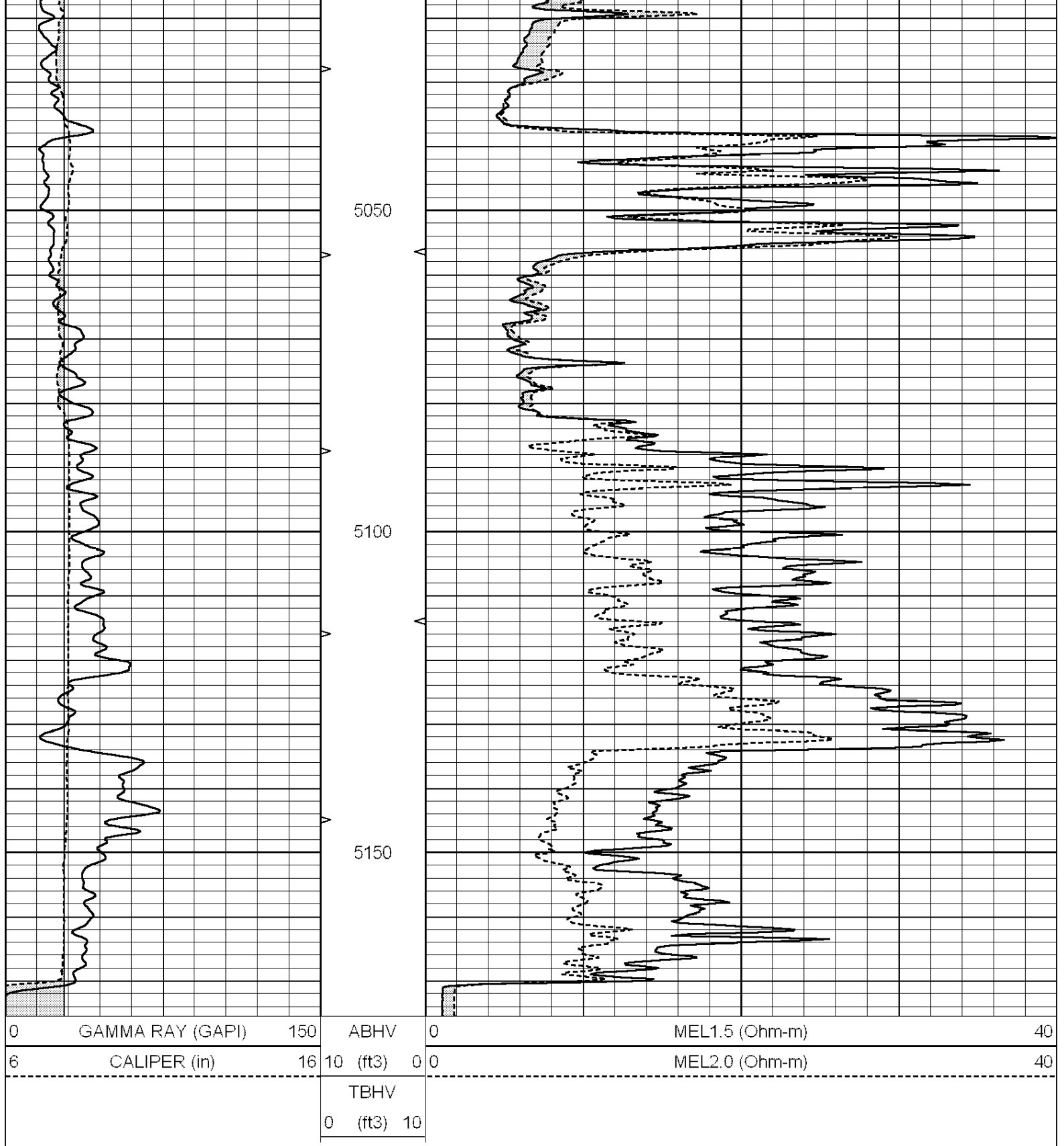
SUPERIOR  
Hays,  
Kansas

# REPEAT SECTION

Database File: 009213ddn.db  
 Dataset Pathname: pass4  
 Presentation Format: \_micro  
 Dataset Creation: Mon Jun 04 10:57:22 2012 by Log Open-Cased 090629  
 Charted by: Depth in Feet scaled 1:240

0	GAMMA RAY (GAPI)	150	ABHV	0	MEL1.5 (Ohm-m)	40
6	CALIPER (in)	16	10 (ft3)	0 0	MEL2.0 (Ohm-m)	40
			TBHV			
			0 (ft3)	10		





Calibration Report

Database File: 009213ddn.db  
 Dataset Pathname: pass5  
 Dataset Creation: Mon Jun 04 11:07:26 2012 by Log Open-Cased 090629

MICRO Calibration Report

Serial Number:	MICRO6
Tool Model:	PROBE
Performed:	Wed May 23 05:16:50 2012

Caliper Calibration:	Gain=6.253	Offset=-1.308
References	Low Cal 5.800	High Cal 13.000
Readings	1.178	2.330
1.5" Calibration:	Gain=30.075	Offset=-0.200
References	Low Cal 0.000	High Cal 20.000
Readings	0.004	1.196
2" Calibration:	Gain=30.041	Offset=0.000
References	Low Cal 0.000	High Cal 20.000
Readings	0.006	0.913
Gamma Ray Calibration Report		
Serial Number:	#8	
Tool Model:	OPEN	
Performed:	Mon Jun 13 16:56:43 2011	
Calibrator Value:	150.0	GAPI
Background Reading:	0.0	cps
Calibrator Reading:	175.0	cps
Sensitivity:	0.8371	GAPI/cps