



SUPERIOR
Hays,
Kansas

COMPENSATED
DENSITY/NEUTRON
LOG

Company CASTELLI EXPLORATION, INC.
Well GREGG #2-29
Field HAM
County COMANCHE
State KANSAS

Company CASTELLI EXPLORATION, INC.
Well GREGG #2-29
Field HAM
County COMANCHE State KANSAS

Location: API # : 15-033-21584-0000
1380' FNL & 1650' FWL
N/2 - NW - SE - NW
SEC 29 TWP 33S RGE 16W
Permanent Datum GROUND LEVEL Elevation 1778
Log Measured From KELLY BUSHING & A.G.L.
Drilling Measured From KELLY BUSHING
Other Services
DIL/MEL
Elevation
K.B. 1786
D.F. 1784
G.L. 1778

Date	6/4/12		
Run Number	ONE		
Depth Driller	5170		
Depth Logger	5172		
Bottom Logged Interval	5148		
Top Log Interval	3800		
Casing Driller	13 3/8" @ 343		
Casing Logger	342		
Bit Size	7 7/8		
Type Fluid in Hole	CHEMICAL MUD	CHLORIDES 4000 PPM	
Density / Viscosity	9.2/44		
pH / Fluid Loss	9.5/9.6		
Source of Sample	FLOWLINE		
Rin @ Meas. Temp	1.50 @ 82F		
Rmf @ Meas. Temp	1.13 @ 82F		
Rmc @ Meas. Temp	1.80 @ 82F		
Source of Rmf / Rmc	MEASURED		
Rin @ BHT	0.97 @ 127F		
Time Circulation Stopped	2 HOURS		
Time Logger on Bottom			
Maximum Recorded Temperature	127F		
Equipment Number	680		
Location	HAYS, KS.		
Recorded By	JEFF GRONEMEG		
Witnessed By	RICK POPP		

<<< Fold Here >>>

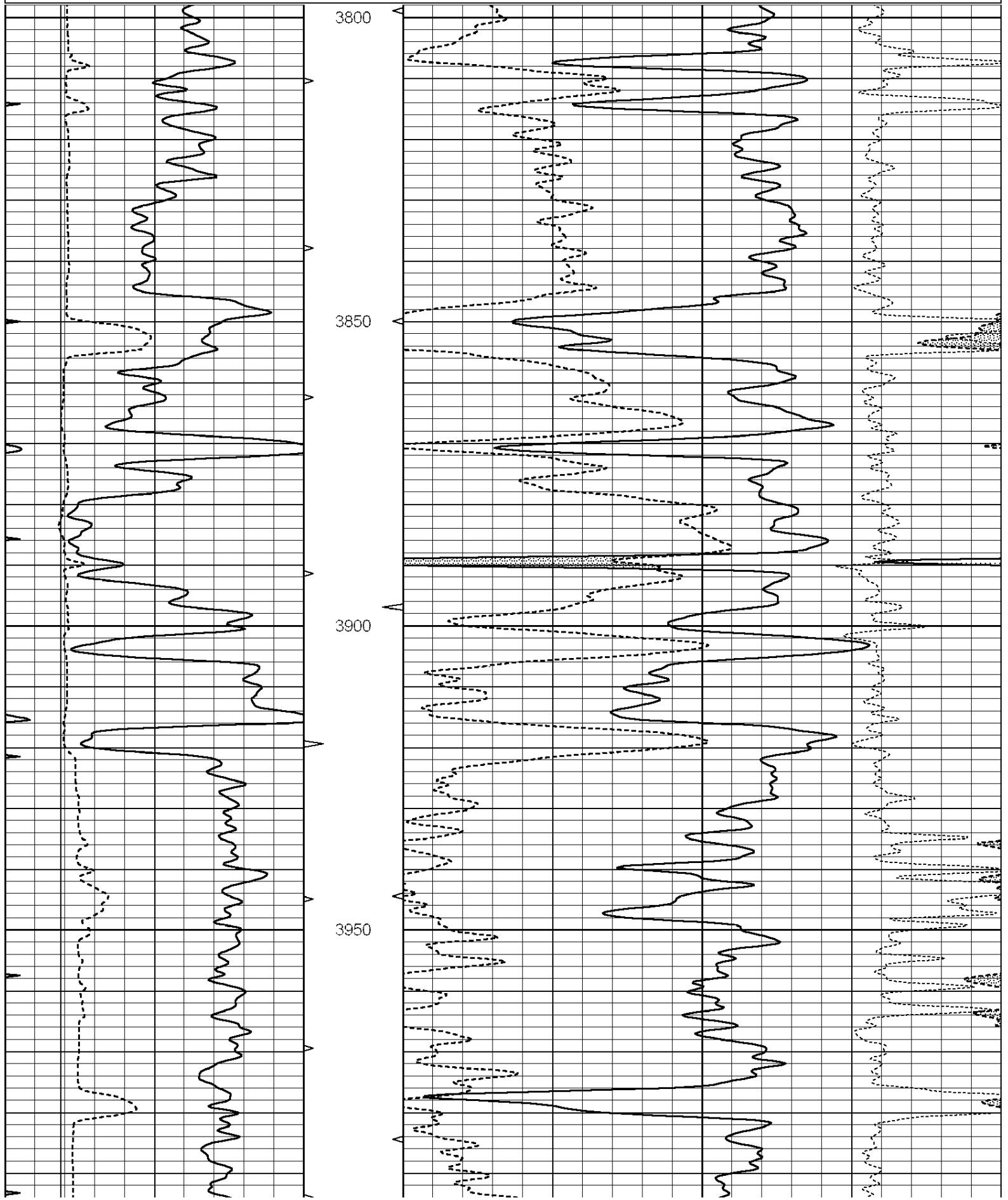
All interpretations are opinions based on inferences from electrical or other measurements and we cannot and do not guarantee the accuracy or correctness of any interpretation, and we shall not, except in the case of gross or willful negligence on our part, be liable or responsible for any loss, costs, damages, or expenses incurred or sustained by anyone resulting from any interpretation made by any of our officers, agents or employees. These interpretations are also subject to our general terms and conditions set out in our current Price Schedule.

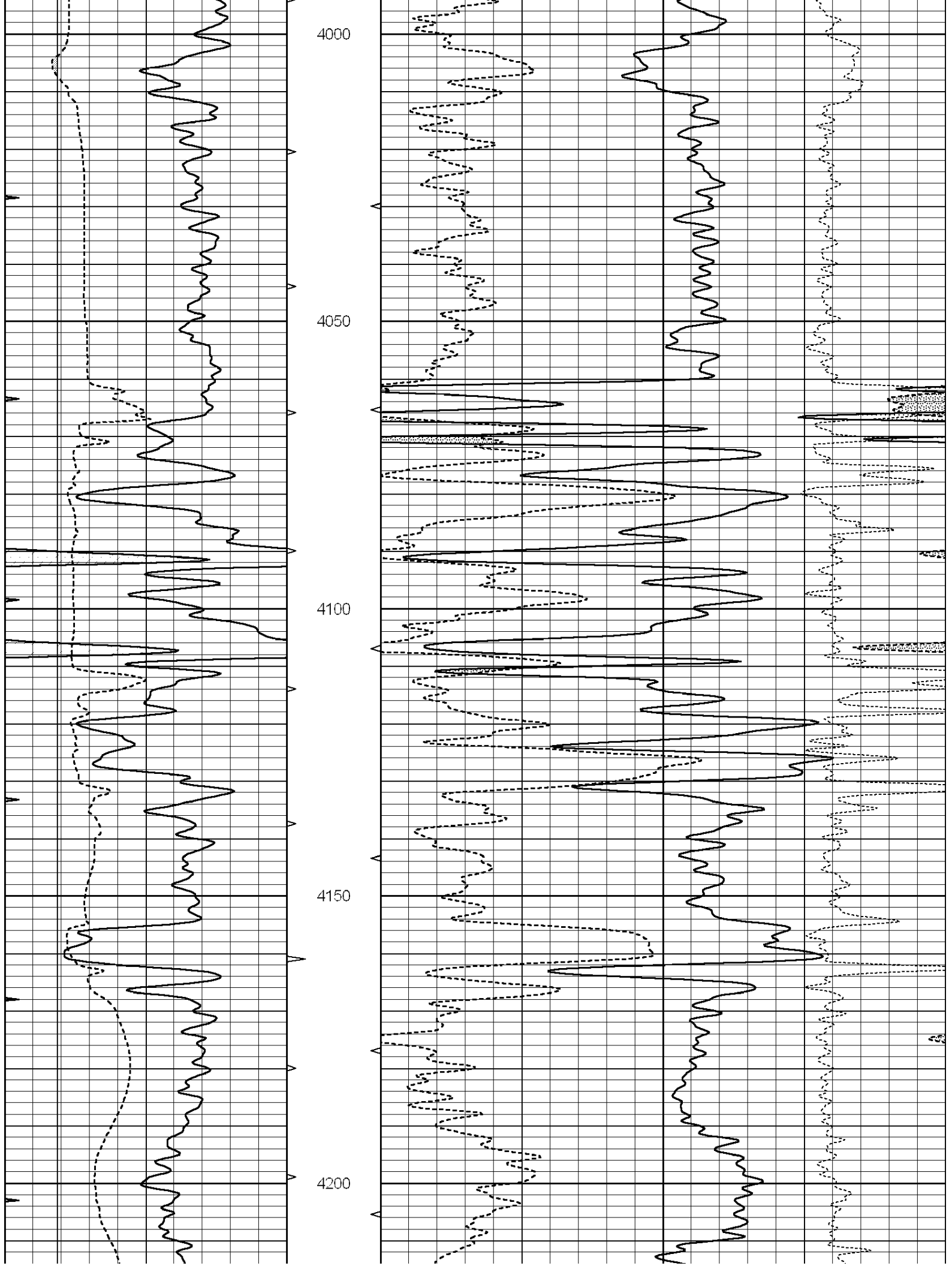
Comments

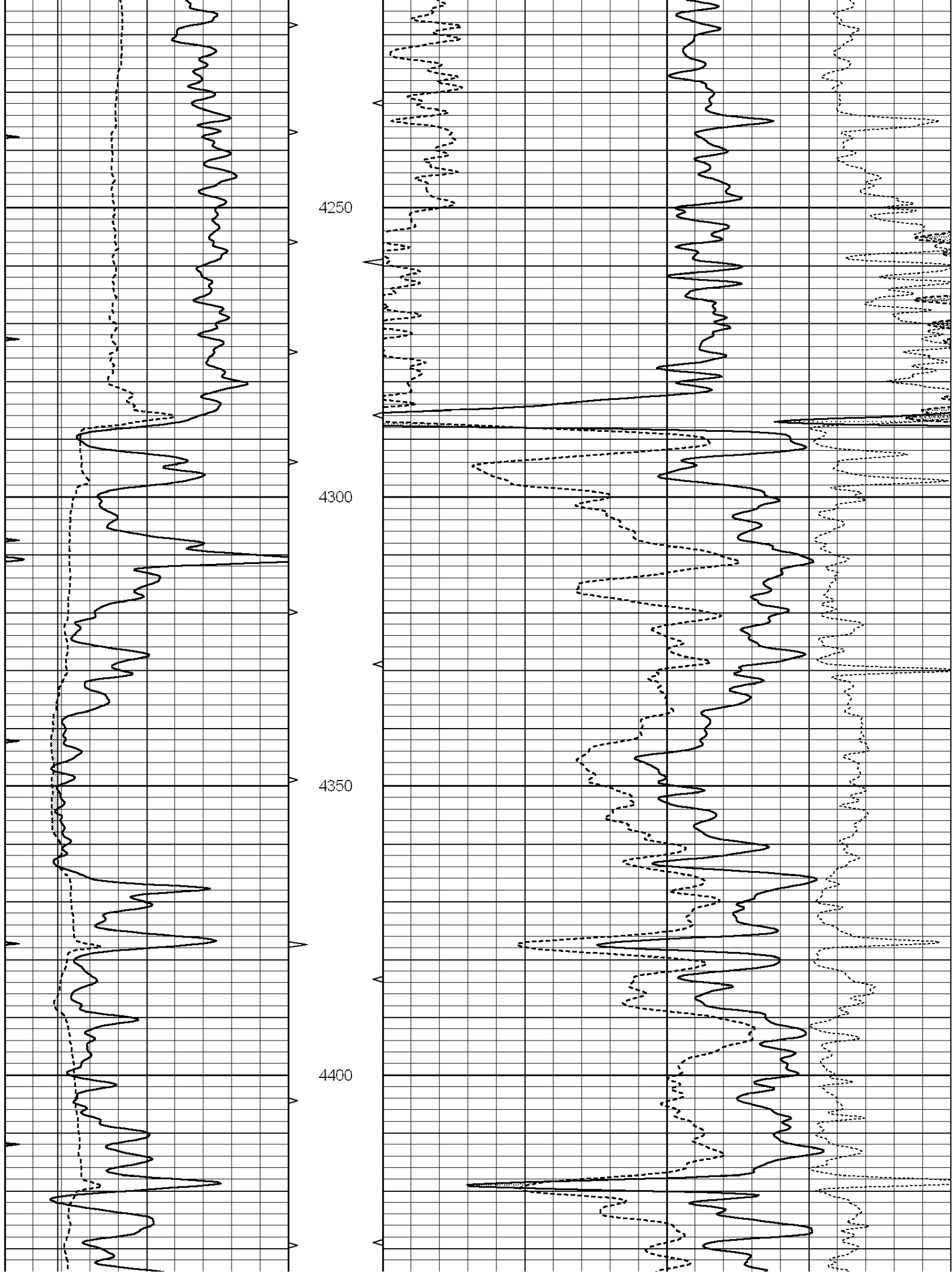
THANK YOU FOR USING SUPERIOR WELL SERVICE (785) 628-6395
DIRECTIONS
COLDWATER, KS - EAST ON HWY 160 TO RD 22 - SOUTH TO STOP SIGN
SOUTH AND EAST THROUGH THREE CATTLEGUARDS TO WHITE SHED
SOUTH INTO ON WEST SIDE OF SHED - GO EAST AND SOUTH AFTER SECOND
CATTLE GUARD

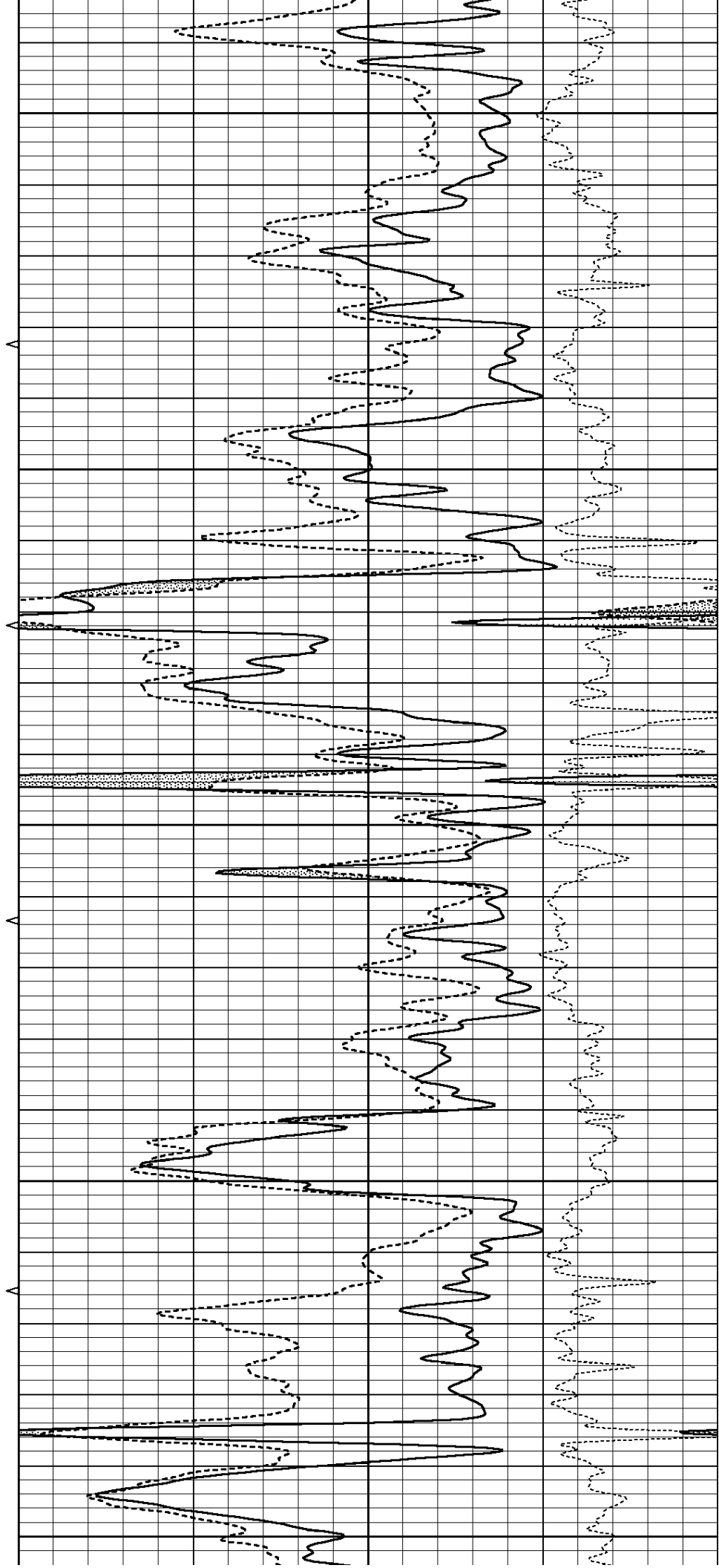
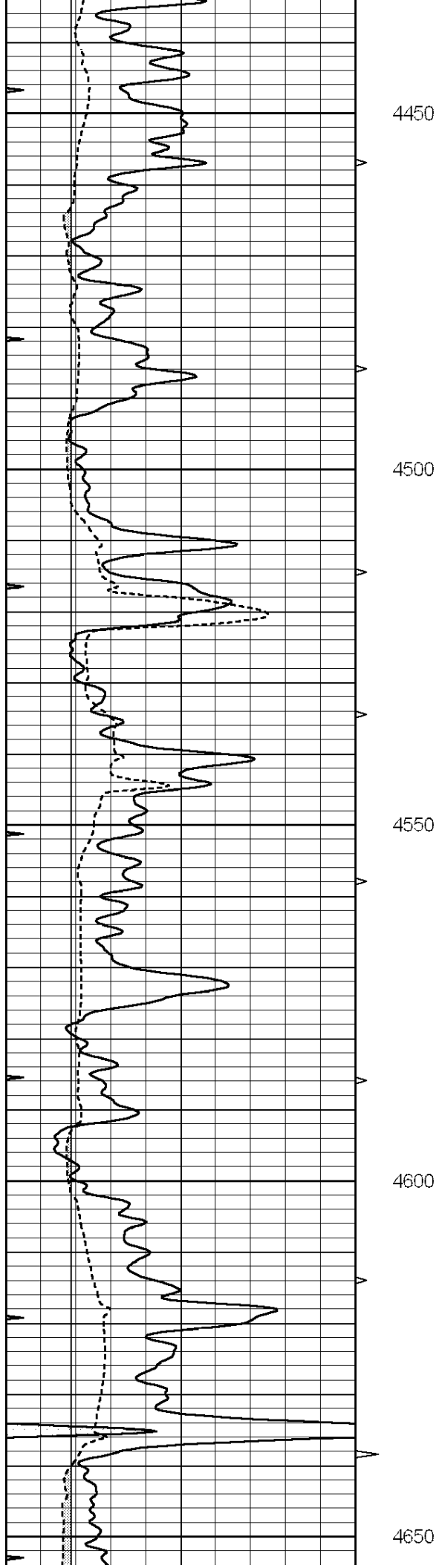
Database File: 009213ddn.db
Dataset Pathname: pass3.3
Presentation Format: _den_neu
Dataset Creation: Mon Jun 04 09:35:31 2012 by Calc Open-Cased 090629
Charted by: Depth in Feet scaled 1:240

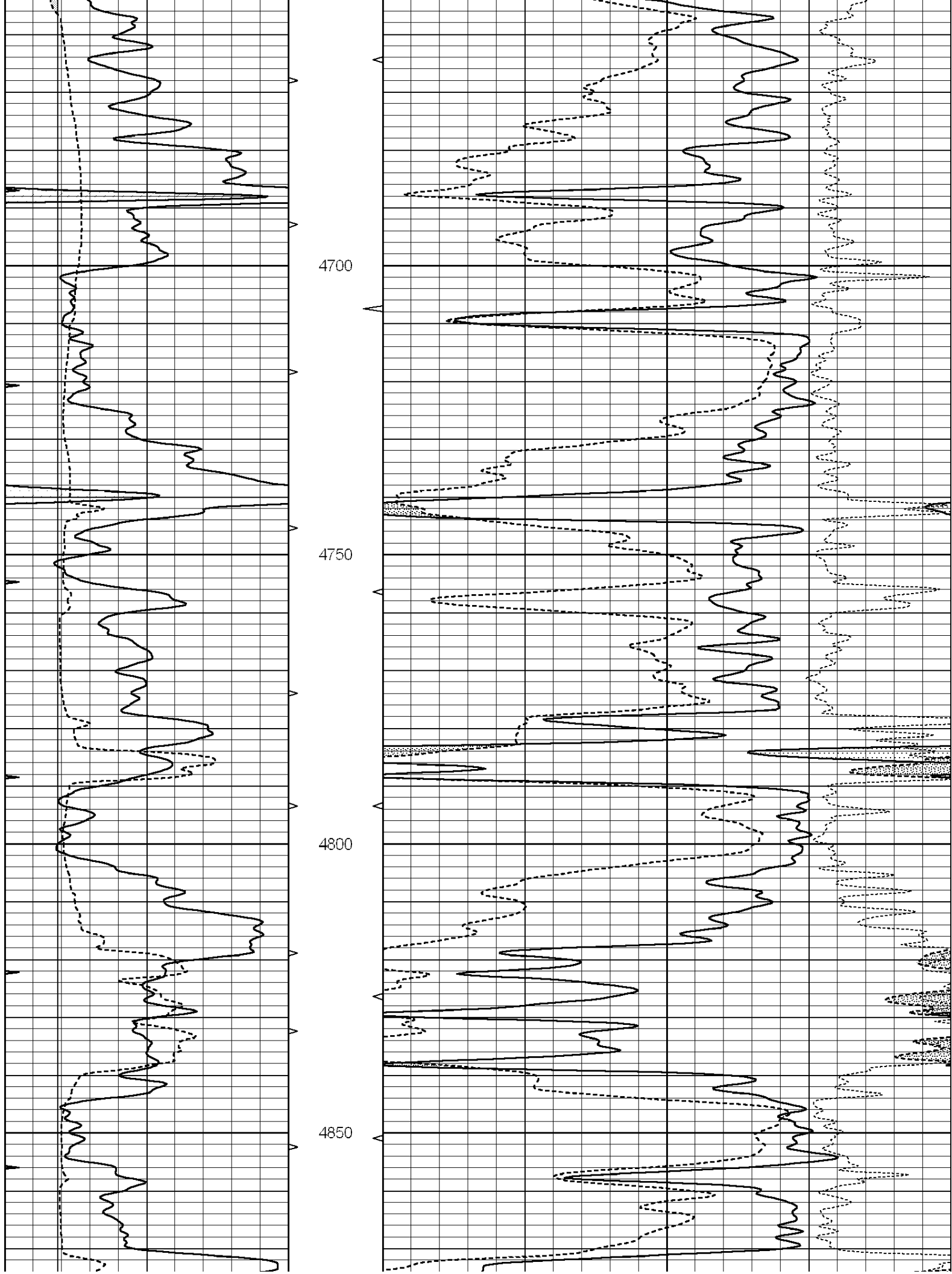
0	GAMMA RAY (GAPI)	150	AVTX	30	COMPENSATED DENSITY (pu)	-10
6	CALIPER (in)	16	10 (ft3)	0 30	COMPENSATED NEUTRON (pu)	-10
0	MINMK	20	BVTX		-0.25 CORRECTION (g/cc)	0.25
			0 (ft3)	10		

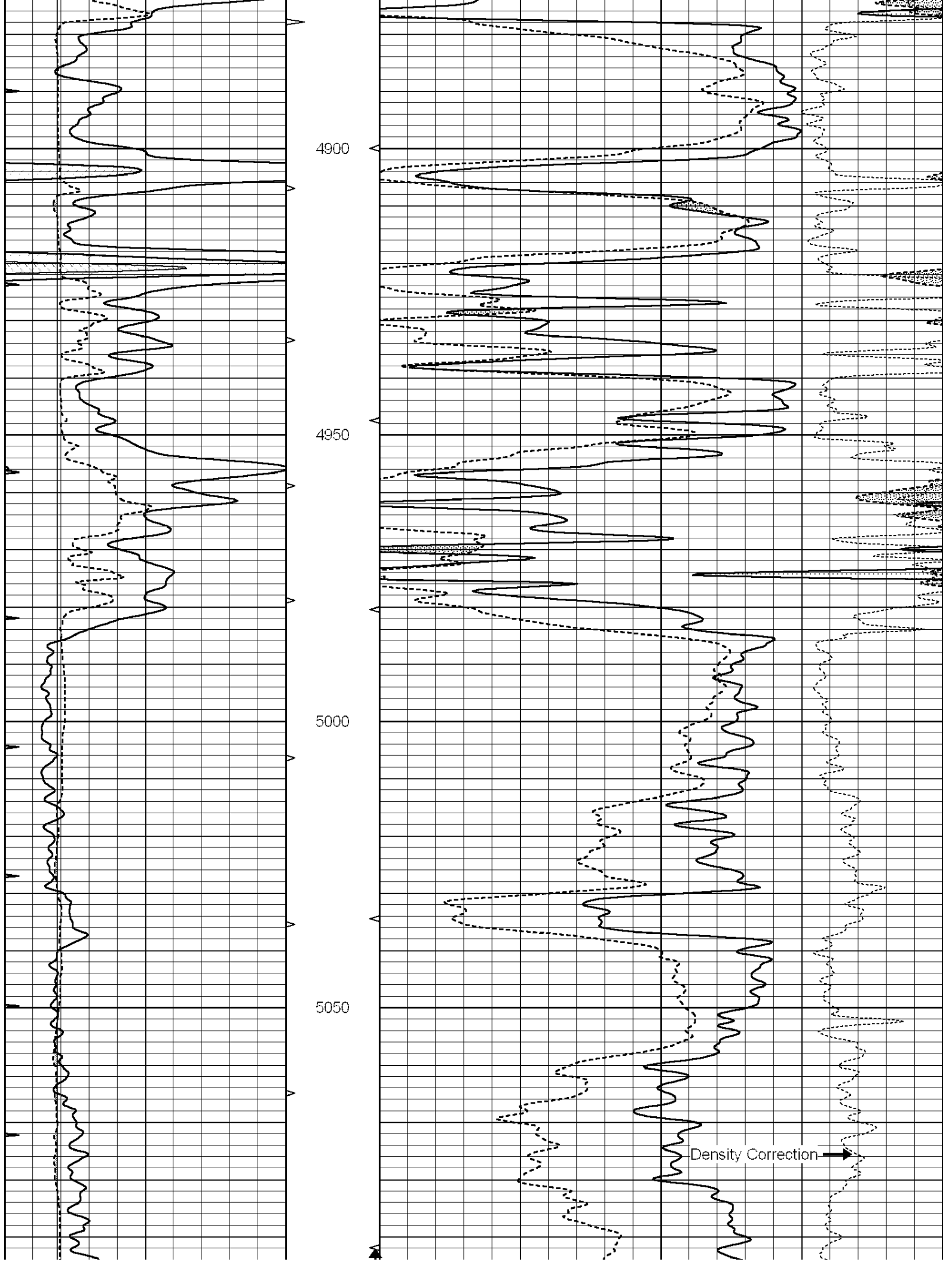


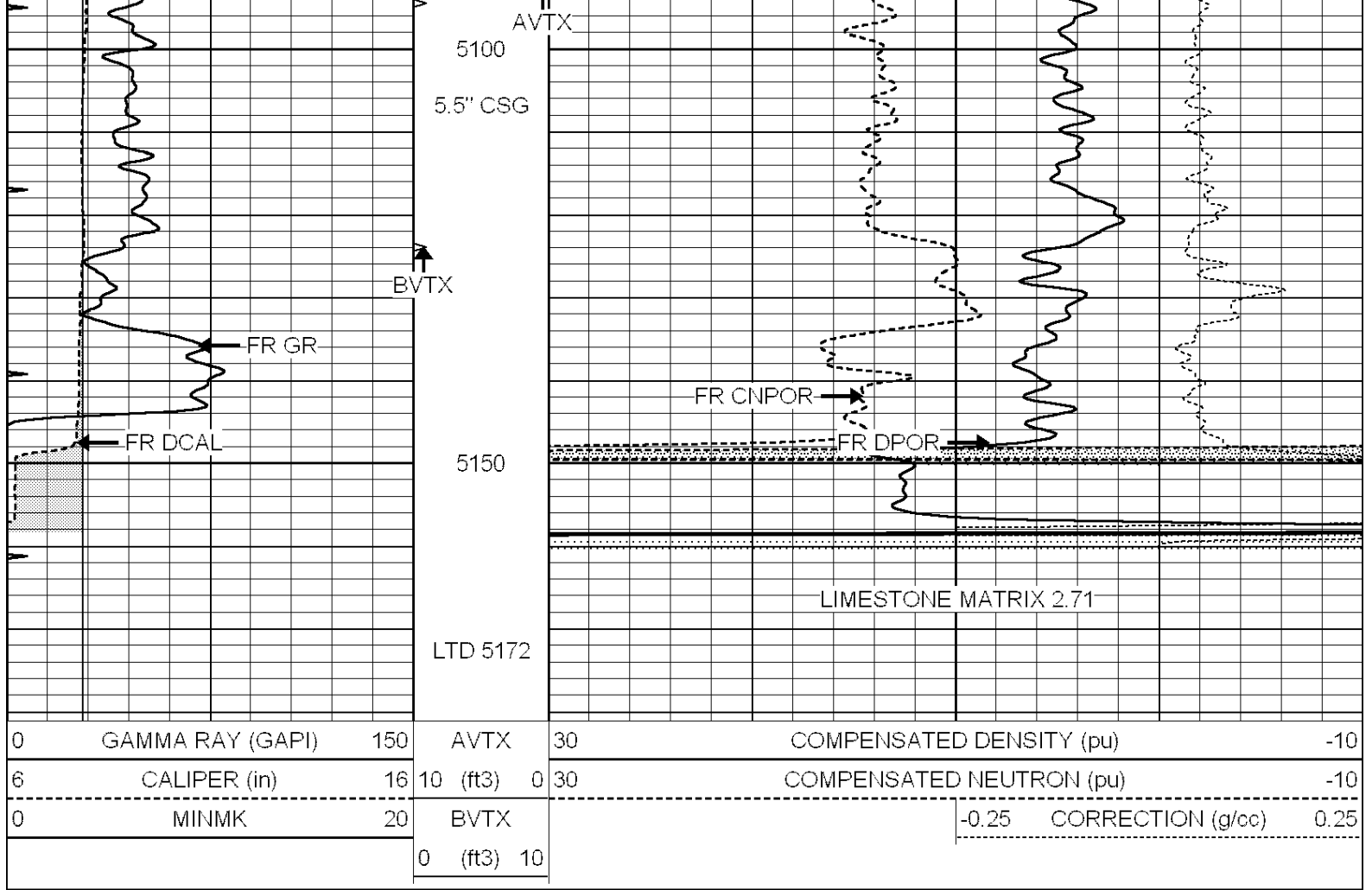










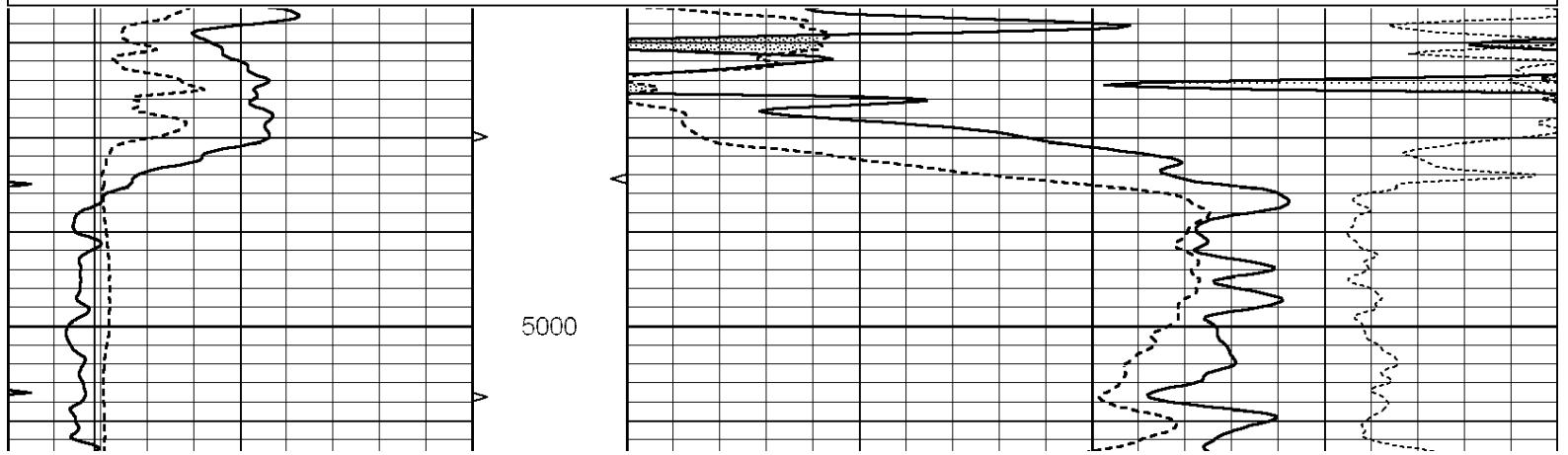


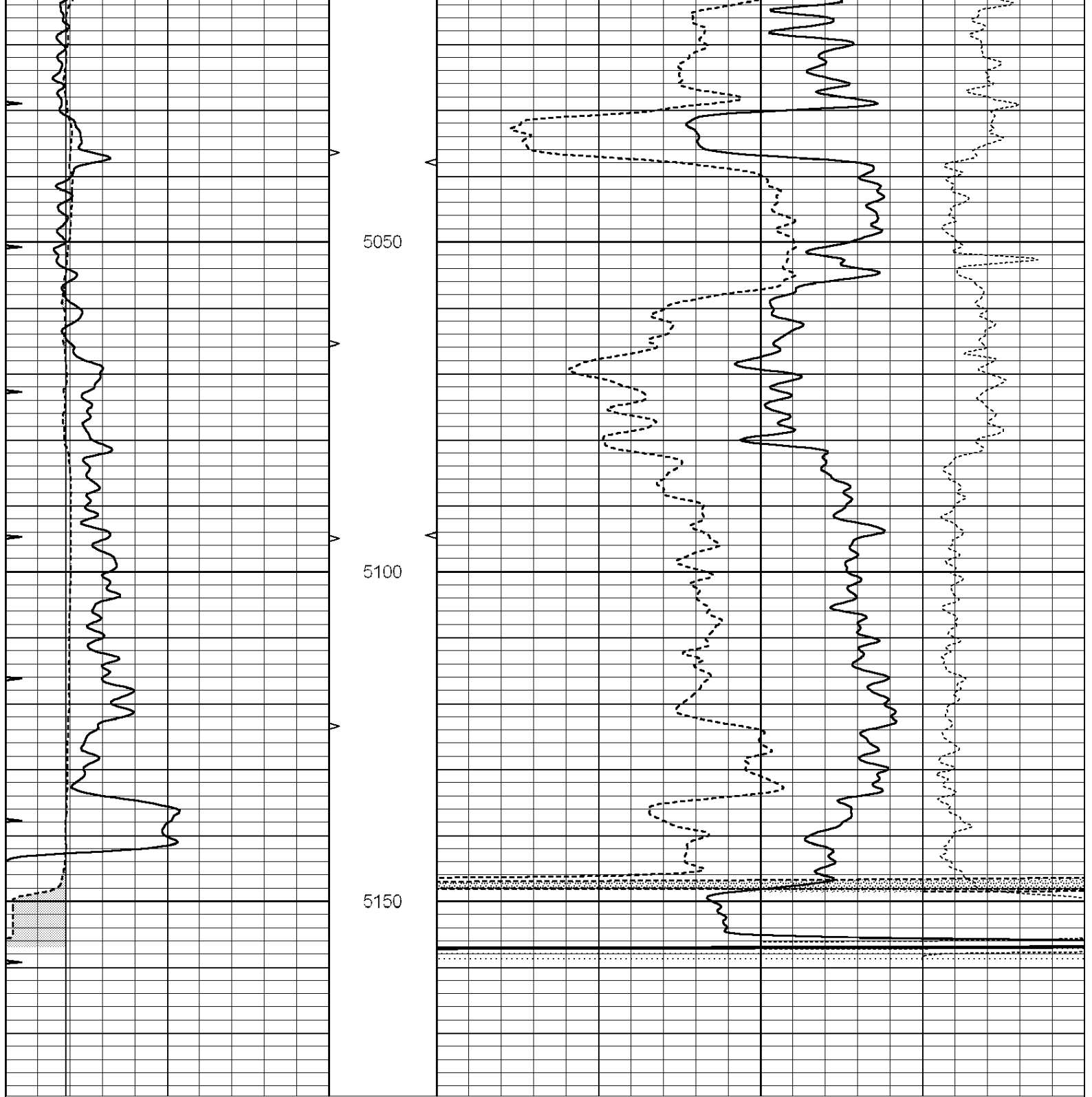
SUPERIOR
Hays,
Kansas

REPEAT SECTION

Database File: 009213ddn.db
 Dataset Pathname: pass2.1
 Presentation Format: _den_neu
 Dataset Creation: Mon Jun 04 08:49:03 2012 by Calc Open-Cased 090629
 Charted by: Depth in Feet scaled 1:240

0	GAMMA RAY (GAPI)	150	AVTX	30	COMPENSATED DENSITY (pu)	-10
6	CALIPER (in)	16	10 (ft3)	0 30	COMPENSATED NEUTRON (pu)	-10
0	MINMK	20	BVTX		-0.25 CORRECTION (g/cc)	0.25
			0 (ft3)	10		





0	GAMMA RAY (GAPI)	150	AVTX	30	COMPENSATED DENSITY (pu)	-10
6	CALIPER (in)	16	10 (ft3)	0 30	COMPENSATED NEUTRON (pu)	-10
0	MINMK	20	BVTX		-0.25 CORRECTION (g/cc)	0.25
			0 (ft3)	10		

Calibration Report

Database File: 009213ddn.db
 Dataset Pathname: pass3.3
 Dataset Creation: Mon Jun 04 09:35:31 2012 by Calc Open-Cased 090629

Dual Induction Calibration Report

Serial-Model: PROBE8-DILG

Surface Cal Performed:
 Downhole Cal Performed:
 After Survey Verification Performed:

Fri Aug 01 06:33:19 2008
 Mon Jul 28 11:08:27 2008
 Mon Jul 28 11:08:27 2008

Surface Calibration								
Readings			References				Results	
Loop:	Air	Loop		Air	Loop		m	b
Deep	0.015	0.648	V	0.000	400.000	mmho/m	632.616	-9.730
Medium	0.029	0.796	V	0.000	464.000	mmho/m	605.049	-17.680
Internal:	Zero	Cal		Zero	Cal		m	b
Deep	0.017	0.657	V	0.000	400.000	mmho/m	625.153	-10.619
Medium	0.016	0.757	V	0.000	464.000	mmho/m	625.992	-9.739

Downhole Calibration								
Readings			References				Results	
	Zero	Cal		Zero	Cal		m'	b'
Deep	0.000	0.000	mmho/m	2.011	405.777	mmho/m	1.000	0.000
Medium	0.000	0.000	mmho/m	7.590	503.393	mmho/m	1.000	0.000
LL3		7.500	V		1500.000	Ohm-m		
		0.000	V		20.000	Ohm-m		
		-7.200	V		3800.000	mmho-m		

After Survey Verification								
Readings			Targets				Results	
	Zero	Cal		Zero	Cal		m'	b'
Deep	0.000	0.000	mmho/m	0.000	0.000	mmho/m	0.000	0.000
Medium	0.000	0.000	mmho/m	0.000	0.000	mmho/m	0.000	0.000
LL3		1.000	Ohm-m		1.000	Ohm-m		
		0.000	Ohm-m		0.000	Ohm-m		
		1.000	mmho-m		1.000	mmho-m		

Compensated Density Calibration Report

Serial-Model:	GEAR4-GEARHART
Source / Verifier:	143 / 143
Master Calibration Performed:	Mon Mar 19 19:07:19 2012

Master Calibration								
Density			Far Detector		Near Detector			
Magnesium	1.710	g/cc	1015.91	497.51	cps			
Aluminum	2.600	g/cc	227.67	350.20	cps			
Spine Angle = 76.79			Density/Spine Ratio = 0.579					
Size			Reading					
Small Ring	8.00	in	2.25	V				
Large Ring	14.00	in	4.37	V				

Compensated Neutron Calibration Report

Serial Number:	6I
Tool Model:	G

CALIBRATION						
Detector	Readings		Target		Normalization	
Short Space	1.00	cps	1.00	cps	1.0000	
Long Space	1.00	cps	1.00	cps	1.0000	

Gamma Ray Calibration Report

Serial Number:	#8	
Tool Model:	OPEN	
Performed:	Mon Jun 13 16:56:43 2011	
Calibrator Value:	150.0	GAPI
Background Reading:	0.0	cps
Calibrator Reading:	175.0	cps
Sensitivity:	0.8371	GAPI/cps