



**SUPERIOR
Hays,
Kansas**

**COMPENSATED
DENSITY / NEUTRON
PE LOG**

Company EDISON OPERATING COMPANY, LLC.
Well PEGGY #1-18
Field MOODY
County STAFFORD
State KANSAS

Company EDISON OPERATING COMPANY, LLC.
Well PEGGY #1-18
Field MOODY
County STAFFORD State KANSAS

Location: API #: 15-185-23746
990' FSL & 1980' FWL
SEC 8 TWP 25S RGE 14W
Permanent Datum GROUND LEVEL Elevation 1990
Log Measured From KELLY BUSHING 10' A.G.L.
Drilling Measured From KELLY BUSHING
Other Services
DIL
SONIC/MEL
Elevation
K.B. 2000
D.F.
G.L. 1990

Date	5-23-12		
Run Number	THREE		
Depth Driller	4500		
Depth Logger	4501		
Bottom Logged Interval	4477		
Top Log Interval	3400		
Casing Driller	417		
Casing Logger	417		
Bit Size	7.875		
Type Fluid in Hole	STAROCH MUD	CHLORIDES: 68,400 ppm	
Density / Viscosity	9.6 / 55		
pH / Fluid Loss	7.0 / 16.0		
Source of Sample	FLOWLINE		
Rm @ Meas. Temp	0.25 @ 91F		
Rmf @ Meas. Temp	0.19 @ 91F		
Rmc @ Meas. Temp	0.30 @ 91F		
Source of Rmf / Rmc	MEASURED		
Rm @ BHT	.190 @ 120F		
Time Circulation Stopped	3 HOURS		
Time Logger on Bottom	10:00 A.M.		
Maximum Recorded Temperature	120F		
Equipment Number	860		
Location	HAYS, KS.		
Recorded By	RUPP		
Witnessed By	DEREK PATTERSON		

<<< Fold Here >>>

All interpretations are opinions based on inferences from electrical or other measurements and we cannot and do not guarantee the accuracy or correctness of any interpretation, and we shall not, except in the case of gross or willful negligence on our part, be liable or responsible for any loss, costs, damages, or expenses incurred or sustained by anyone resulting from any interpretation made by any of our officers, agents or employees. These interpretations are also subject to our general terms and conditions set out in our current Price Schedule.

Comments

SUPERIOR WELL SERVICES
785-628-6395
THANK YOU FOR YOUR BUSINESS
DIRECTIONS: JCT. OF #281 & #50, 7W TO BYERS BLACKTOP, 6S, 1 1/2W, NW INTO.

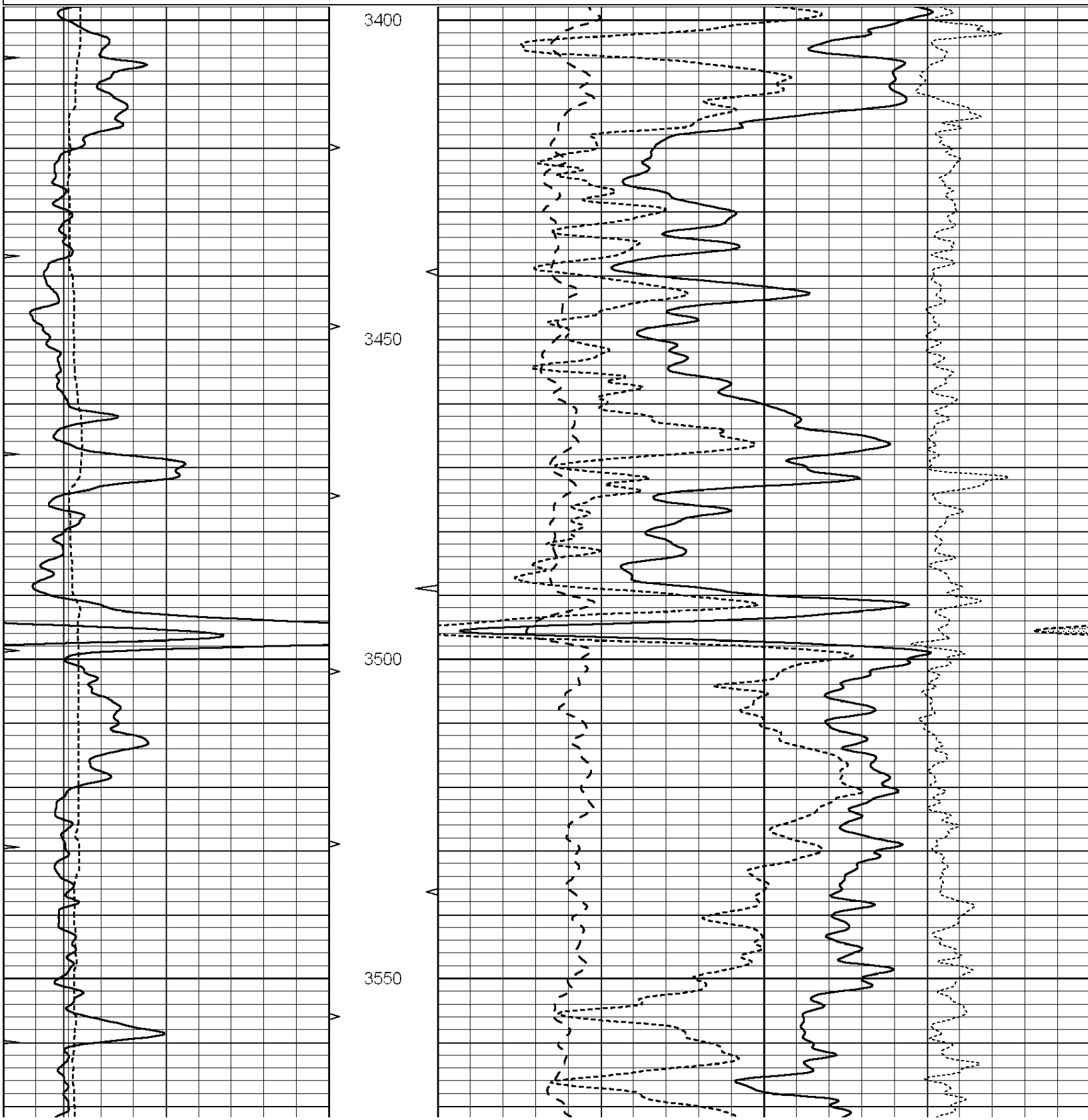


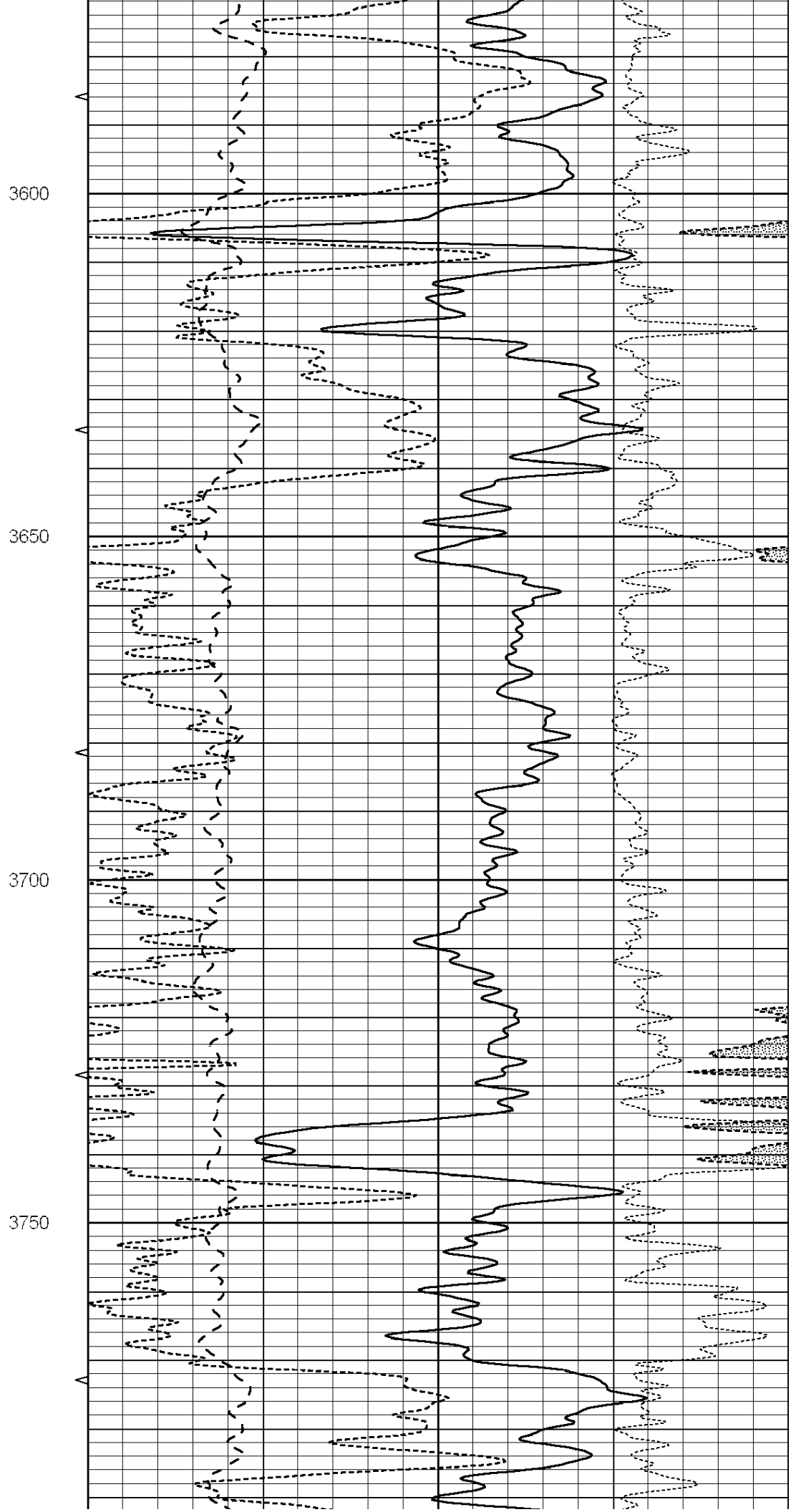
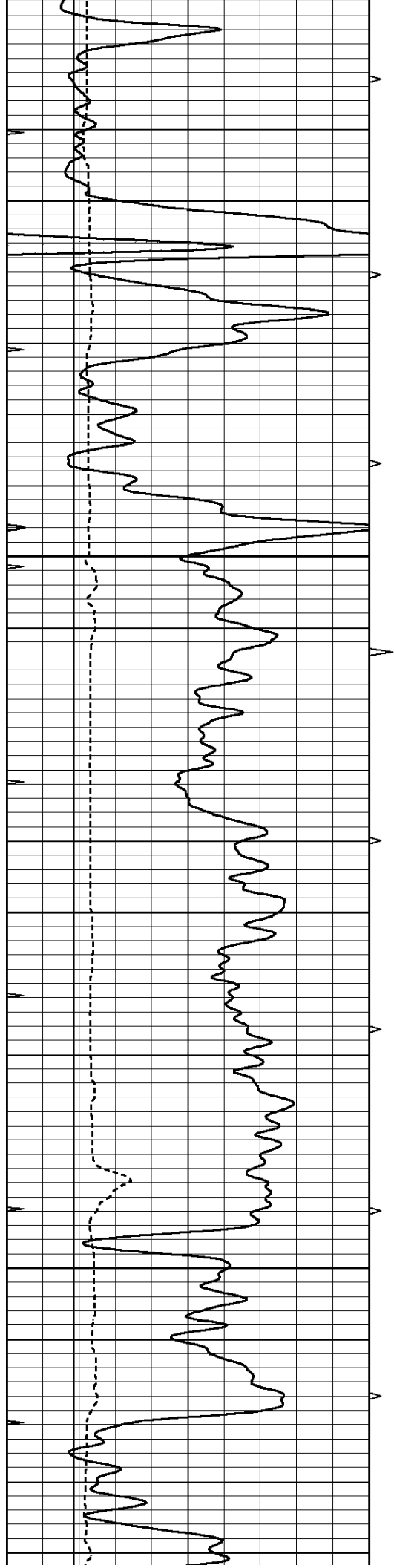
**SUPERIOR
Hays,
Kansas**

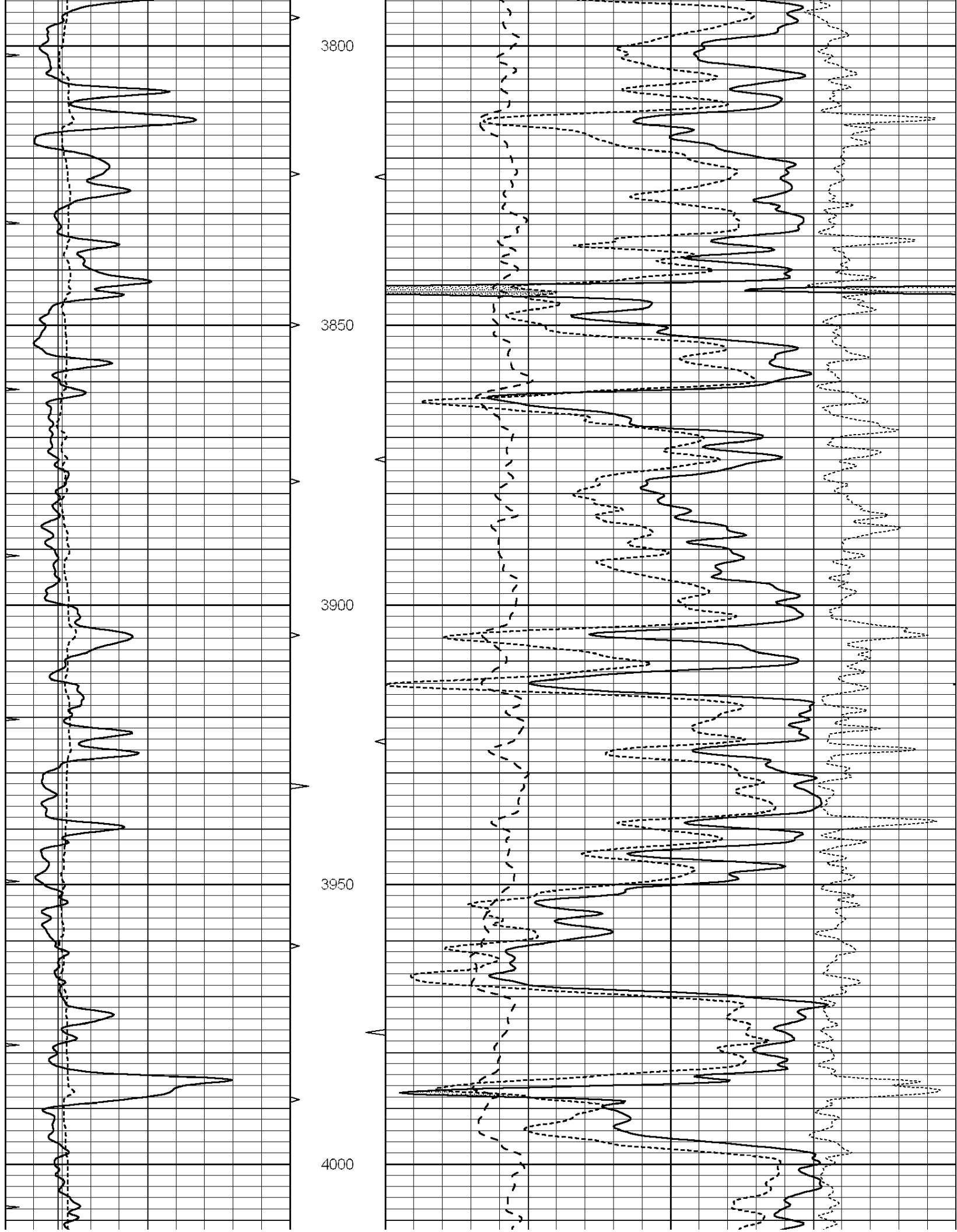
MAIN SECTION

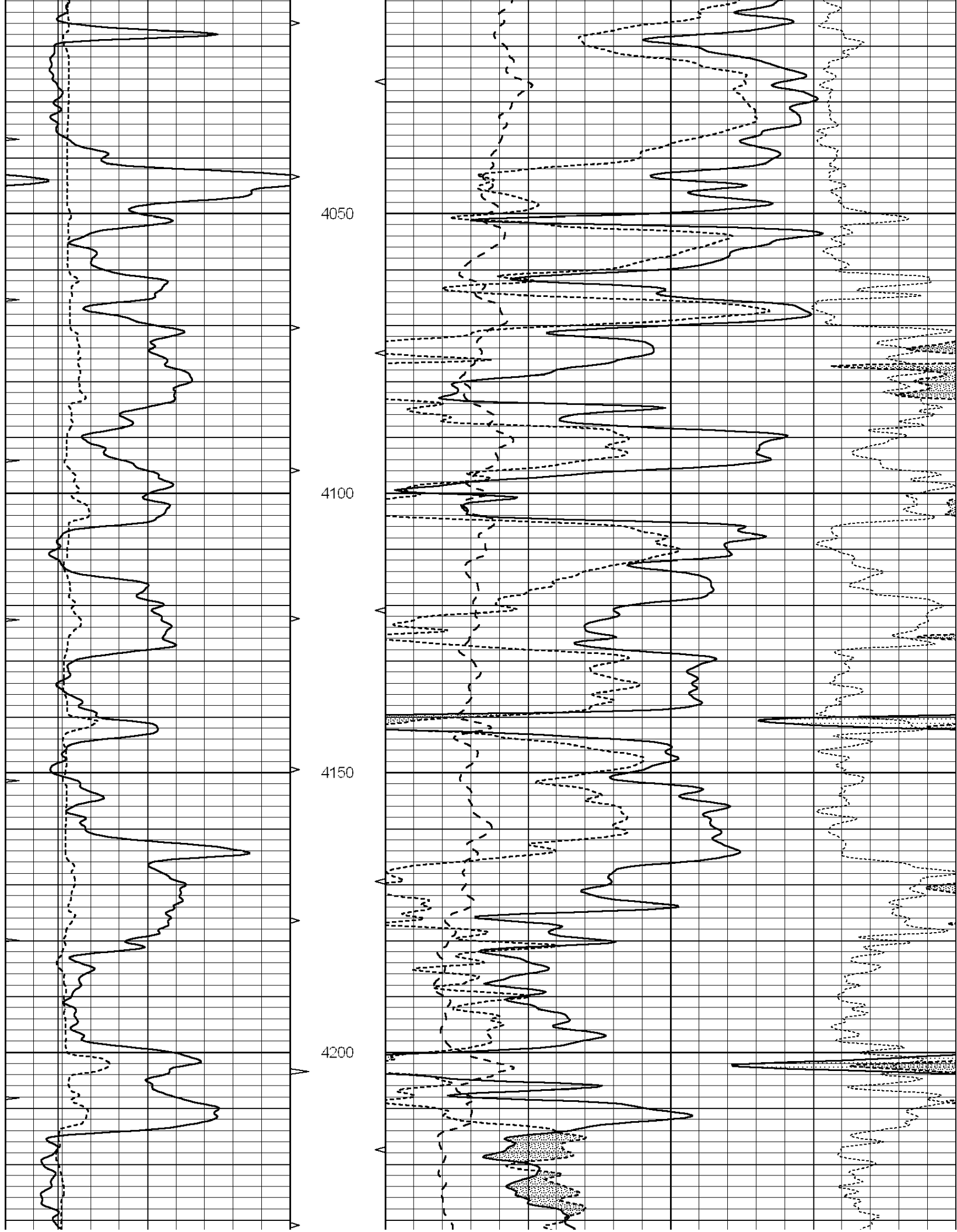
Database File: 009125ddn.db
 Dataset Pathname: pass8A
 Presentation Format: den_neu
 Dataset Creation: Wed May 23 19:17:48 2012
 Charted by: Depth in Feet scaled 1:240

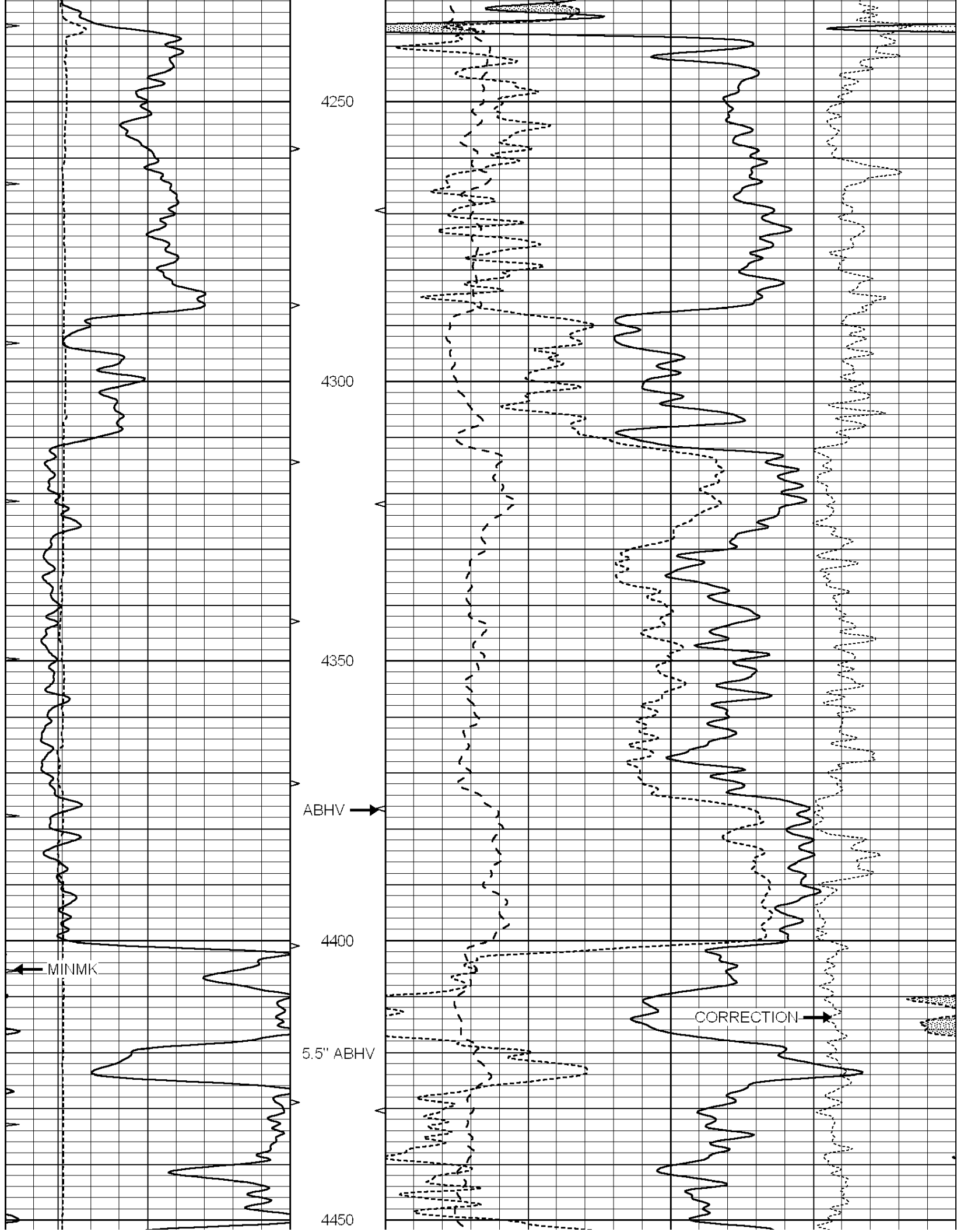
0	GAMMA RAY (GAPI)	150	ABHV	30	COMPENSATED DENSITY (pu)		-10
6	CALIPER (in)	16	10 (ft3)	0	COMPENSATED NEUTRON (pu)		-10
0	MINMK	20	TBHV	0	PE	10 -0.25	CORRECTION (g/cc) 0.25
			0 (ft3)	10			

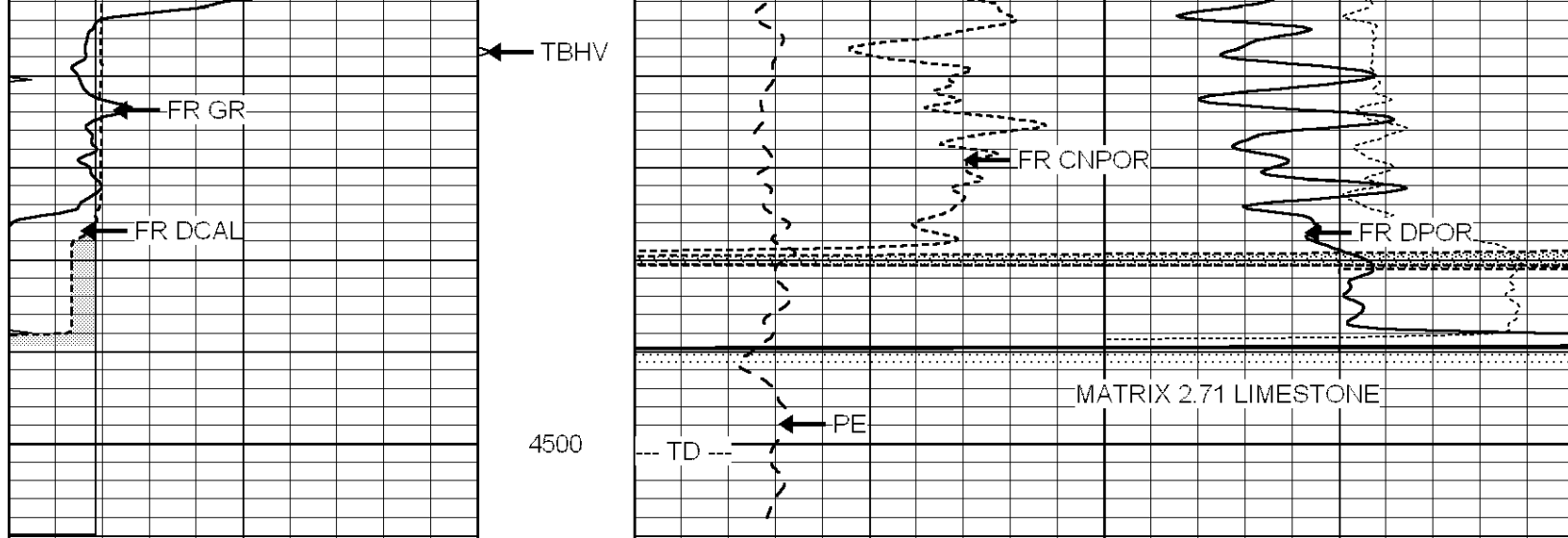












0	GAMMA RAY (GAPI)	150	ABHV	30	COMPENSATED DENSITY (pu)	-10
6	CALIPER (in)	16	10 (ft3) 0	30	COMPENSATED NEUTRON (pu)	-10
0	MINMK	20	TBHV	0	PE	10 -0.25 CORRECTION (g/cc) 0.25
			0 (ft3) 10			

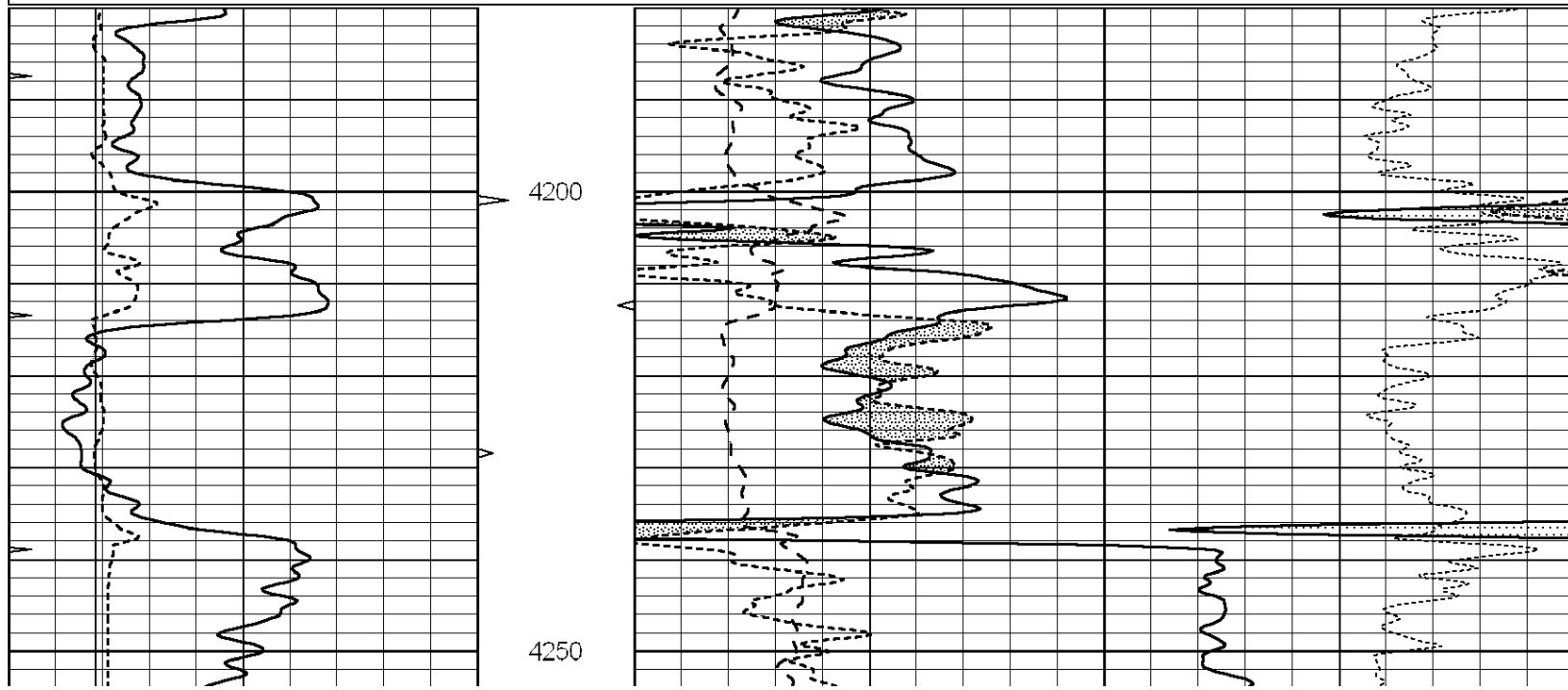


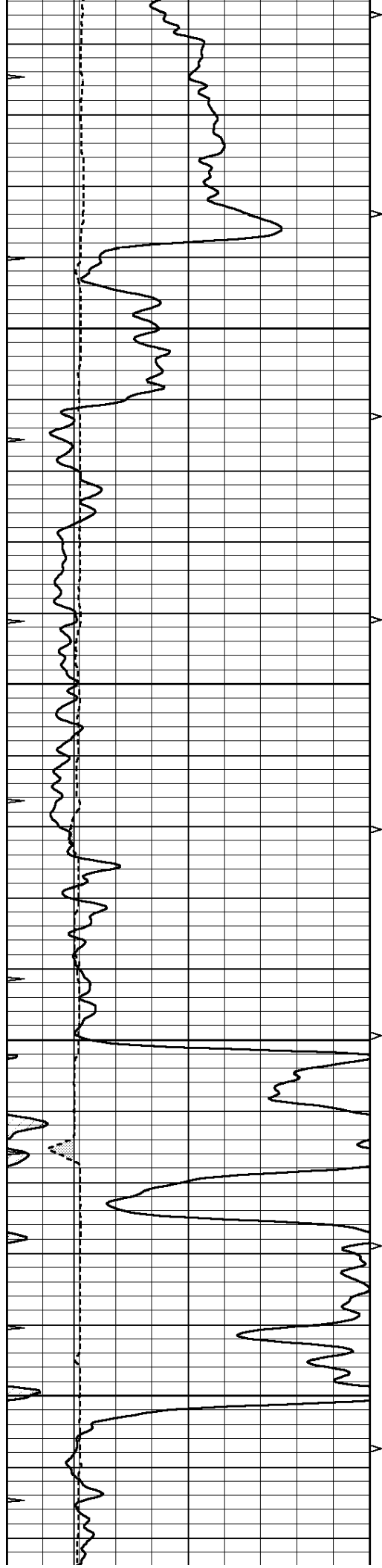
SUPERIOR
Hays,
Kansas

REPEAT SECTION

Database File: 009125ddn.db
 Dataset Pathname: pass7A
 Presentation Format: den_neu
 Dataset Creation: Wed May 23 19:08:37 2012
 Charted by: Depth in Feet scaled 1:240

0	GAMMA RAY (GAPI)	150	ABHV	30	COMPENSATED DENSITY (pu)	-10
6	CALIPER (in)	16	10 (ft3) 0	30	COMPENSATED NEUTRON (pu)	-10
0	MINMK	20	TBHV	0	PE	10 -0.25 CORRECTION (g/cc) 0.25
			0 (ft3) 10			



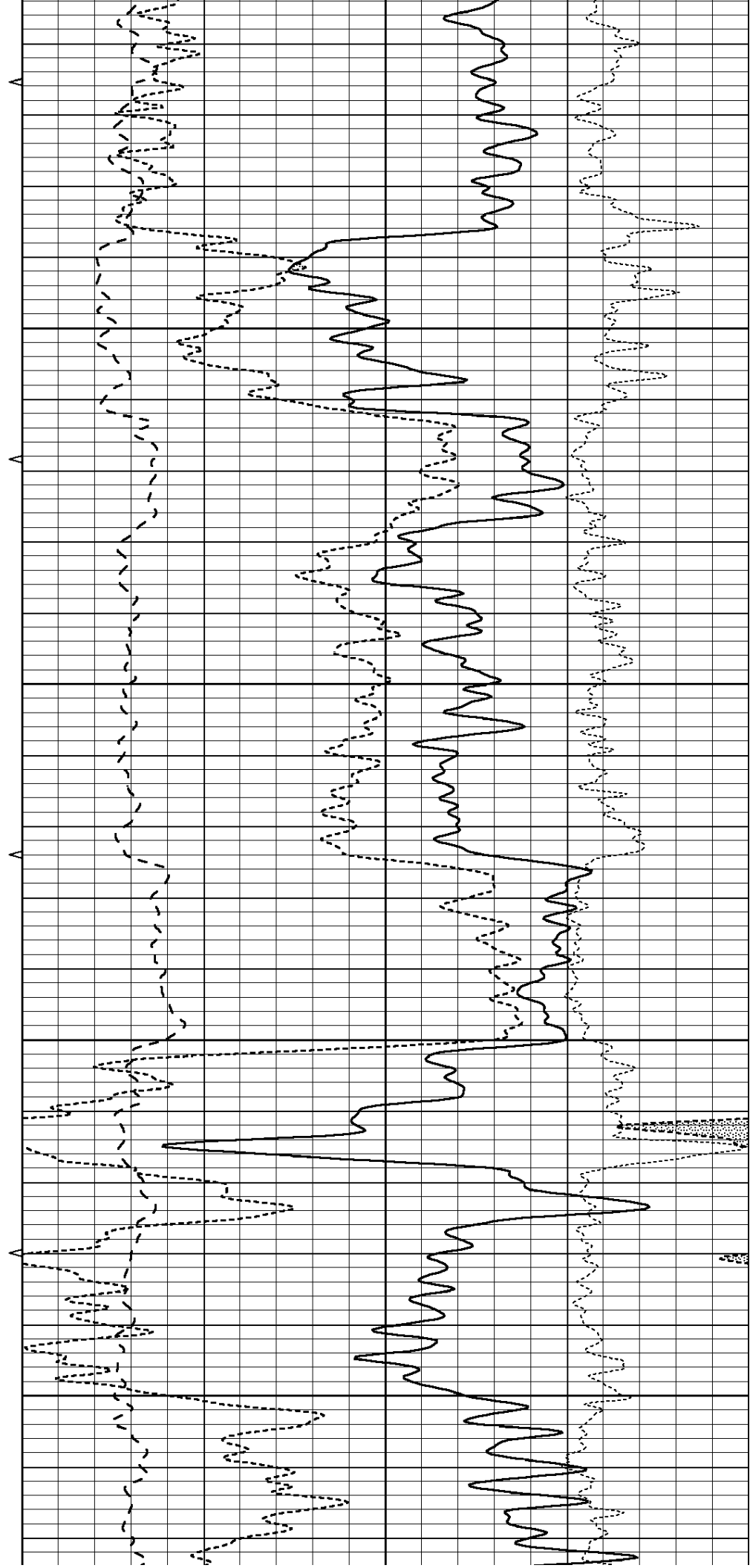


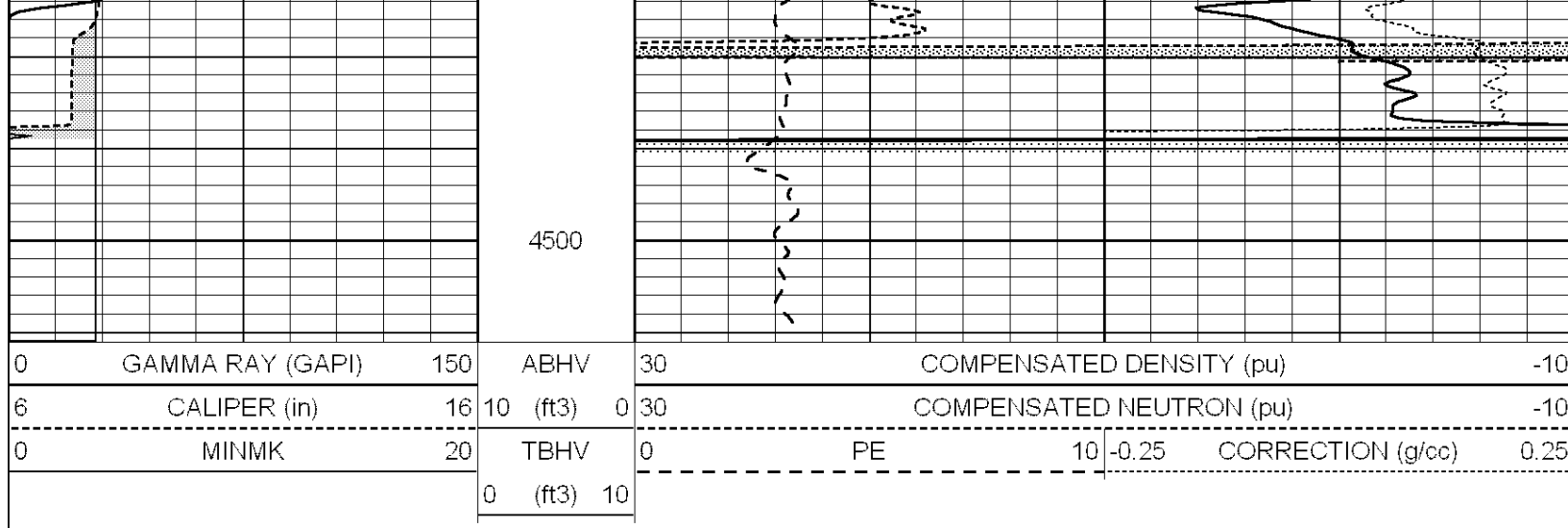
4300

4350

4400

4450





Calibration Report

Database File: 009125ddn.db
 Dataset Pathname: pass8A
 Dataset Creation: Wed May 23 19:17:48 2012

Dual Induction Calibration Report

Serial-Model: PROBE9-DILG
 Surface Cal Performed: Wed May 23 12:31:13 2012
 Downhole Cal Performed: Mon Jul 28 12:02:56 2008
 After Survey Verification Performed: Mon Jul 28 12:02:56 2008

Surface Calibration

Loop:	Readings			References			Results	
	Air	Loop		Air	Loop		m	b
Deep	-0.014	0.629	V	0.000	400.000	mmho/m	550.000	-10.000
Medium	0.039	0.728	V	0.000	464.000	mmho/m	540.000	-12.000
Internal:	Zero	Cal		Zero	Cal		m	b
Deep	0.011	0.610	V	0.000	400.000	mmho/m	667.135	-7.256
Medium	0.005	0.712	V	0.000	464.000	mmho/m	655.677	-3.102

Downhole Calibration

	Readings			References			Results	
	Zero	Cal		Zero	Cal		m'	b'
Deep	0.000	0.000	mmho/m	14.508	388.384	mmho/m	1.000	0.000
Medium	0.000	0.000	mmho/m	166.367	504.400	mmho/m	1.000	0.000
LL3		7.500	V		1400.000	Ohm-m		
		0.000	V		20.000	Ohm-m		
		-7.200	V		3970.000	mmho-m		

After Survey Verification

	Readings			Targets			Results	
	Zero	Cal		Zero	Cal		m'	b'
Deep	0.000	0.000	mmho/m	0.000	0.000	mmho/m	0.000	0.000
Medium	0.000	0.000	mmho/m	0.000	0.000	mmho/m	0.000	0.000
LL3		1.000	Ohm-m		1.000	Ohm-m		
		0.000	Ohm-m		0.000	Ohm-m		
		1.000	mmho-m		1.000	mmho-m		

Compensated Density Calibration Report

Serial-Model:
Source / Verifier:
Master Calibration Performed:

GEAR2-GEARHART
147 / 147
Sat May 19 06:53:16 2012

Master Calibration

	Density		Far Detector		Near Detector	
Magnesium	1.710	g/cc	1203.63		642.89	cps
Aluminum	2.590	g/cc	267.51		439.63	cps
Spine Angle = 75.82			Density/Spine Ratio = 0.567			
	Size		Reading			
Small Ring	7.40	in	4.16		V	
Large Ring	14.00	in	5.99		V	

Compensated Neutron Calibration Report

Serial Number: NUE_2I
Tool Model: G

CALIBRATION

Detector	Readings		Target		Normalization
Short Space	1.00	cps	1.00	cps	1.0000
Long Space	1.00	cps	1.00	cps	1.0000

Gamma Ray Calibration Report

Serial Number: GR5
Tool Model: OPEN
Performed: Wed May 23 09:40:59 2012

Calibrator Value: 1.0 GAPI

Background Reading: 0.0 cps
Calibrator Reading: 1.0 cps

Sensitivity: 0.7000 GAPI/cps