



SUPERIOR
Hays,
Kansas

SONIC
LOG

Company EDISON OPERATING COMPANY, LLC.
Well PEGGY #1-18
Field MOODY
County STAFFORD
State KANSAS

Company EDISON OPERATING COMPANY, LLC.
Well PEGGY #1-18
Field MOODY
County STAFFORD State KANSAS

Location: API #: 15-185-23746
990' FSL & 1980' FWL
SEC 8 TWP 25S RGE 14W
Permanent Datum GROUND LEVEL Elevation 1990
Log Measured From KELLY BUSHING 10' A.G.L.
Drilling Measured From KELLY BUSHING
Other Services
CDL/CNL/PE
DIL/MICRO
Elevation
K.B. 2000
D.F.
G.L. 1990

Date	5-23-12
Run Number	ONE
Depth Driller	4500
Depth Logger	4501
Bottom Logged Interval	4494
Top Log Interval	410
Casing Driller	417
Casing Logger	417
Bit Size	7.875
Type Fluid in Hole	STARCH MUD
Density / Viscosity	9.6 / 55
pH / Fluid Loss	7.0 / 16.0
Source of Sample	FLOWLINE
Rim @ Meas. Temp	0.25 @ 91F
Rmf @ Meas. Temp	0.19 @ 91F
Rmc @ Meas. Temp	0.30 @ 91F
Source of Rmf / Rmc	MEASURED
Rim @ BHT	.190 @ 120F
Time Circulation Stopped	3 HOURS
Time Logger on Bottom	10:00 A.M.
Maximum Recorded Temperature	120F
Equipment Number	860
Location	HAYS, KS.
Recorded By	RUPP
Witnessed By	DEREK PATTERSON

<<< Fold Here >>>

All interpretations are opinions based on inferences from electrical or other measurements and we cannot and do not guarantee the accuracy or correctness of any interpretation, and we shall not, except in the case of gross or willful negligence on our part, be liable or responsible for any loss, costs, damages, or expenses incurred or sustained by anyone resulting from any interpretation made by any of our officers, agents or employees. These interpretations are also subject to our general terms and conditions set out in our current Price Schedule.

Comments

SUPERIOR WELL SERVICES
785-628-6395
THANK YOU FOR YOUR BUSINESS
DIRECTIONS: JCT. OF #281 & #50, 7W TO BYERS BLACKTOP, 6S, 1 1/2W, NW INTO.

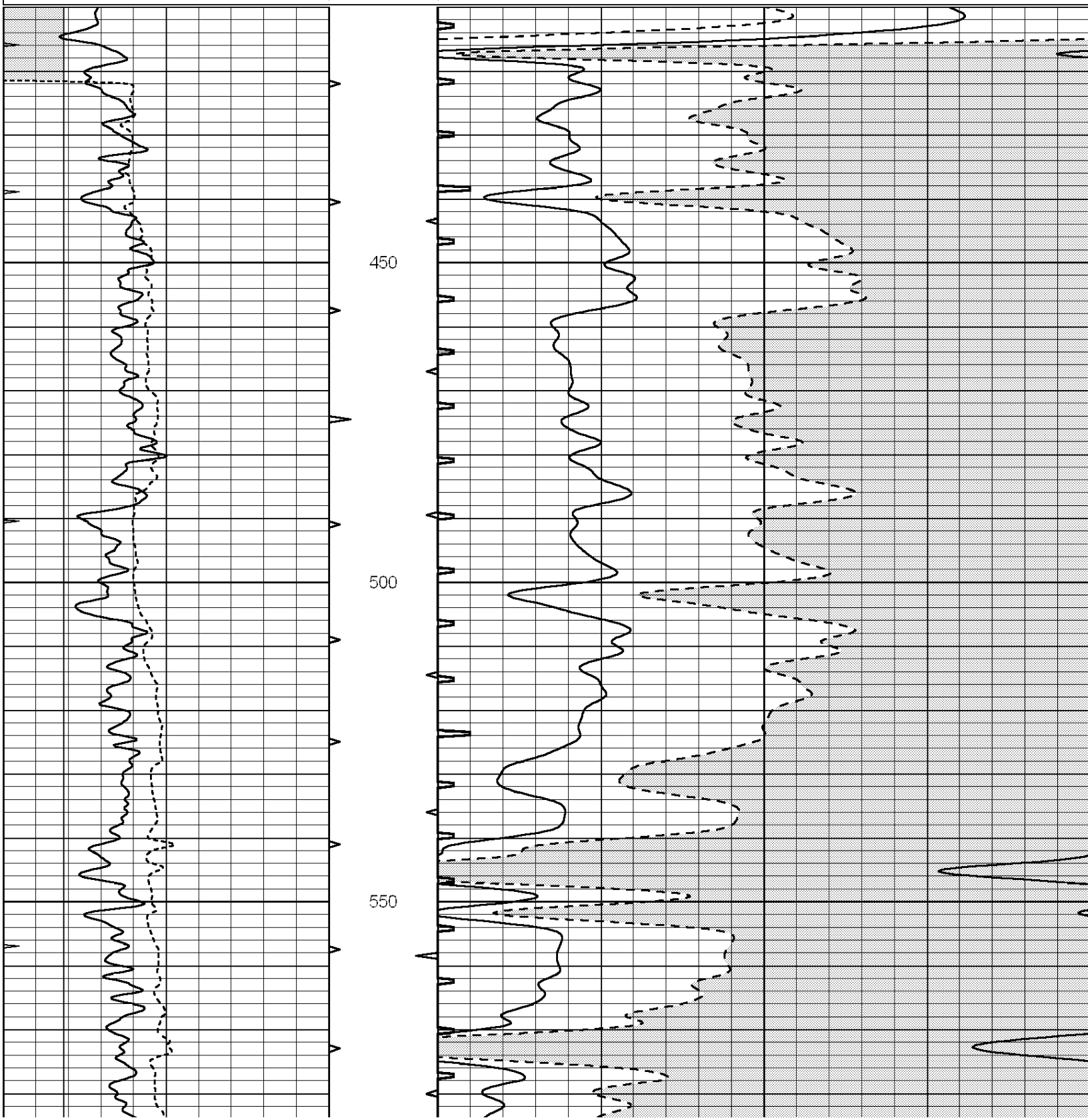


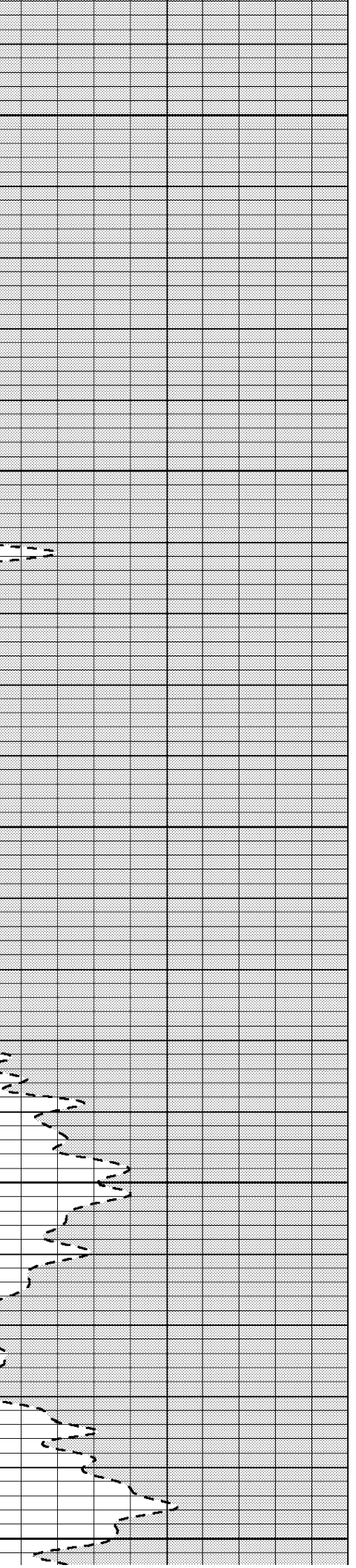
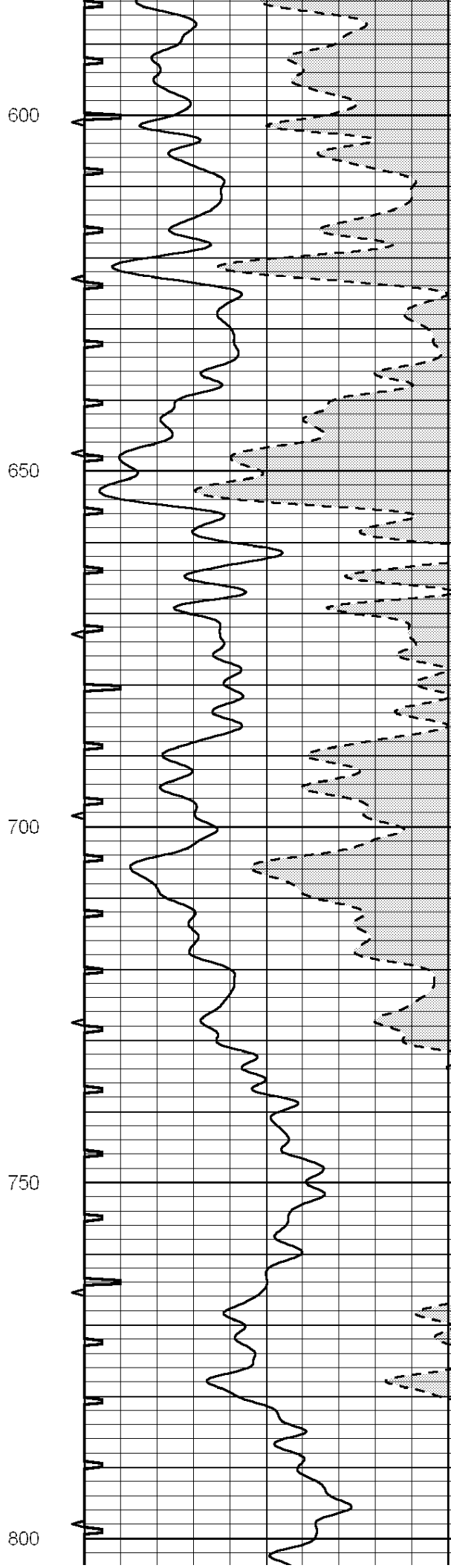
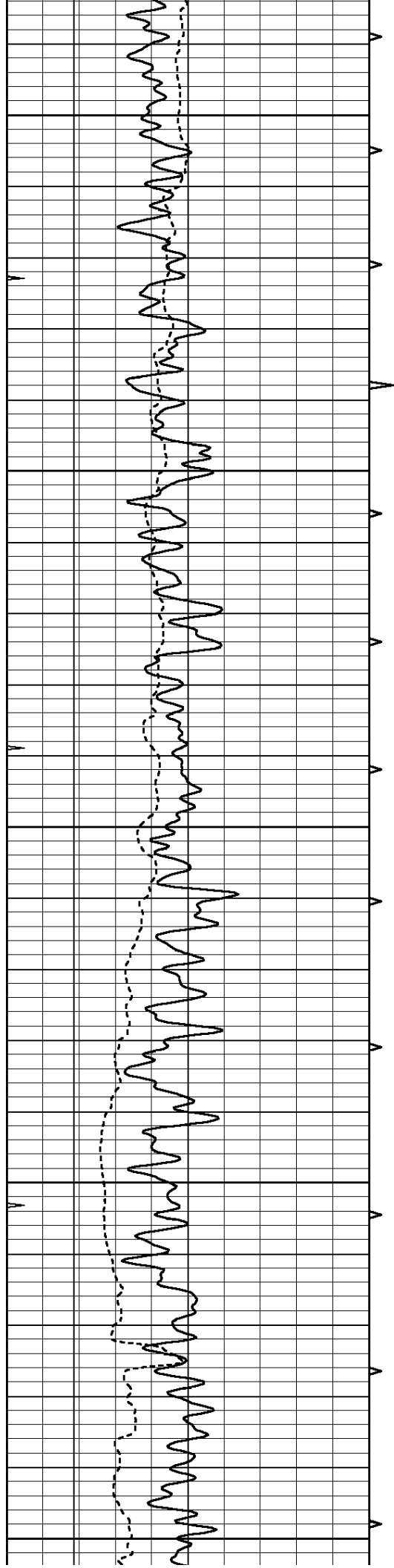
SUPERIOR
Hays,
Kansas

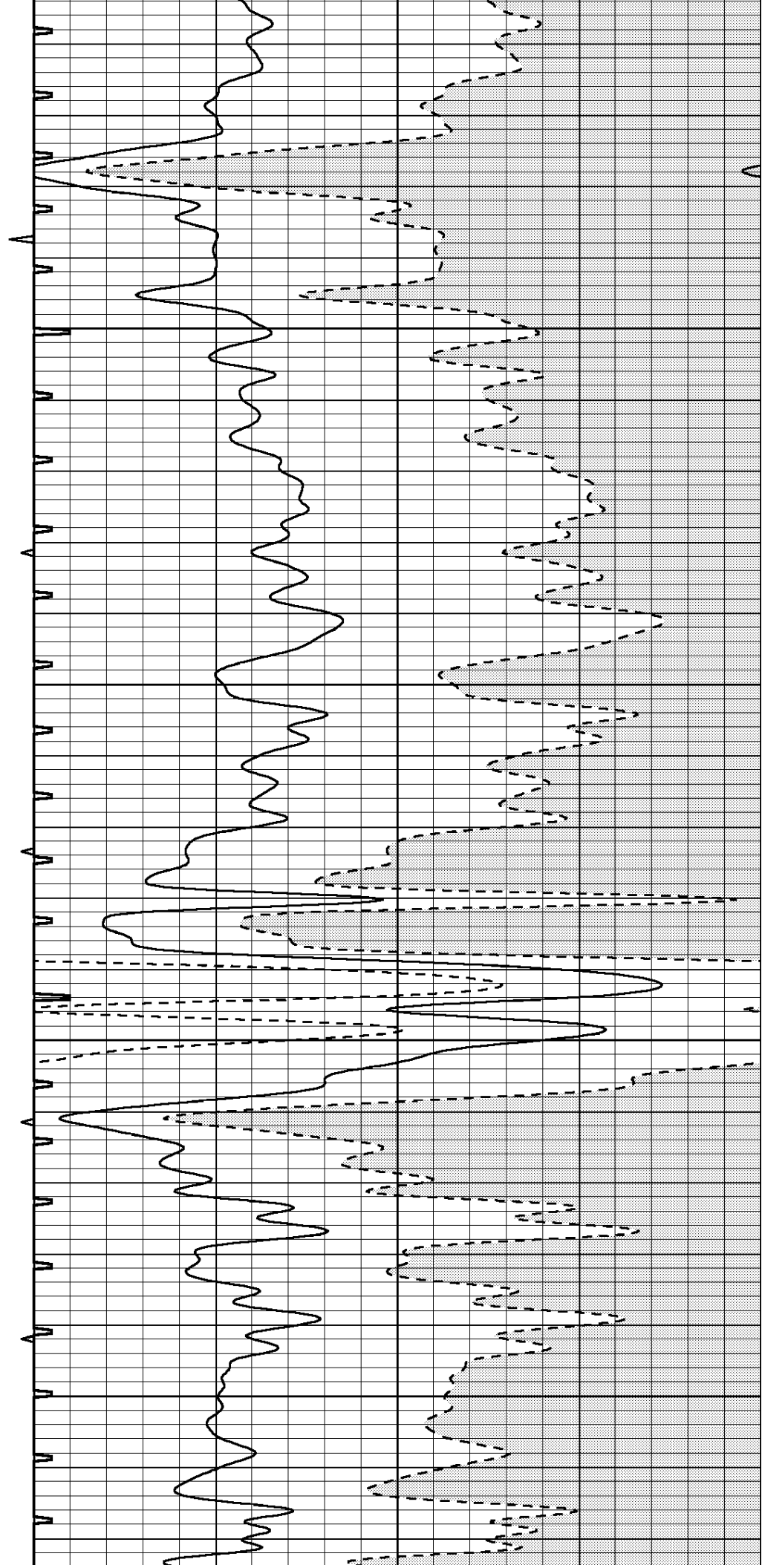
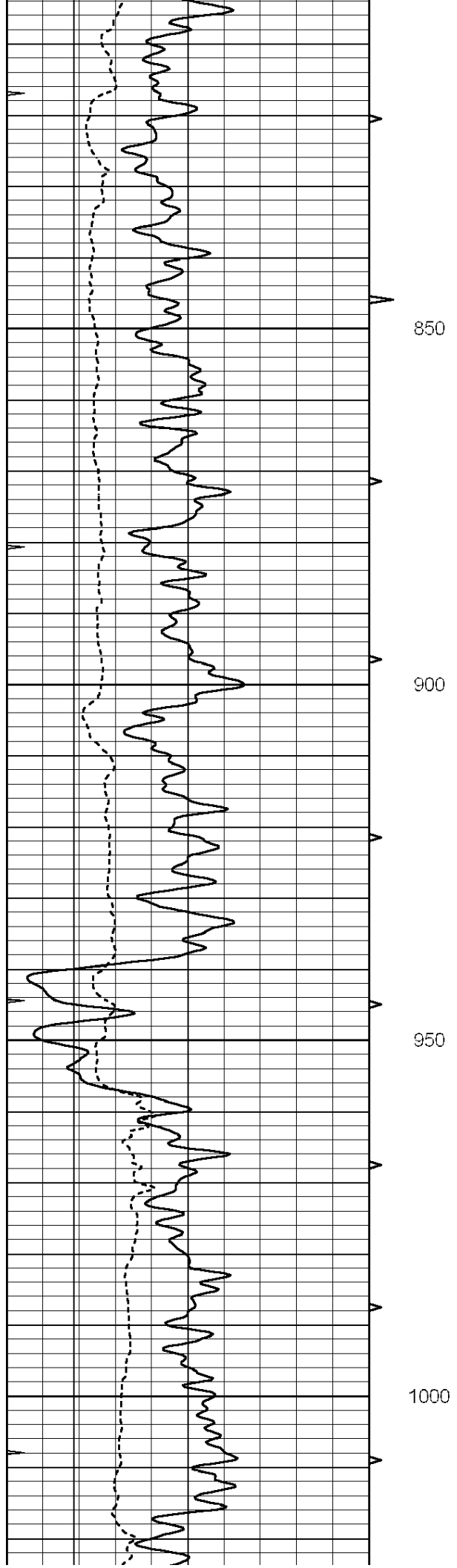
MAIN SECTION

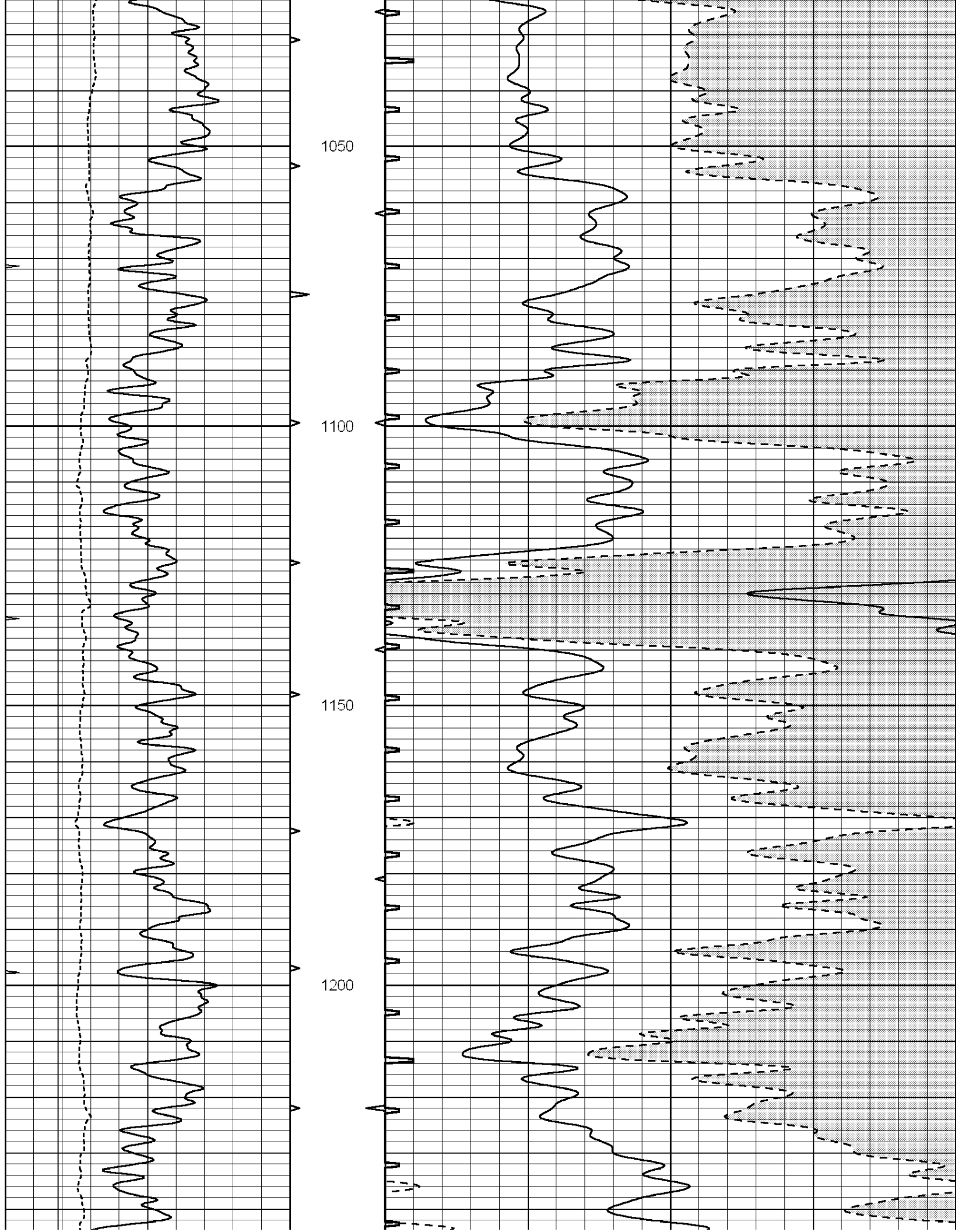
Database File: 009125ddn.db
 Dataset Pathname: pass4.1A
 Presentation Format: slt
 Dataset Creation: Wed May 23 11:37:10 2012
 Charted by: Depth in Feet scaled 1:240

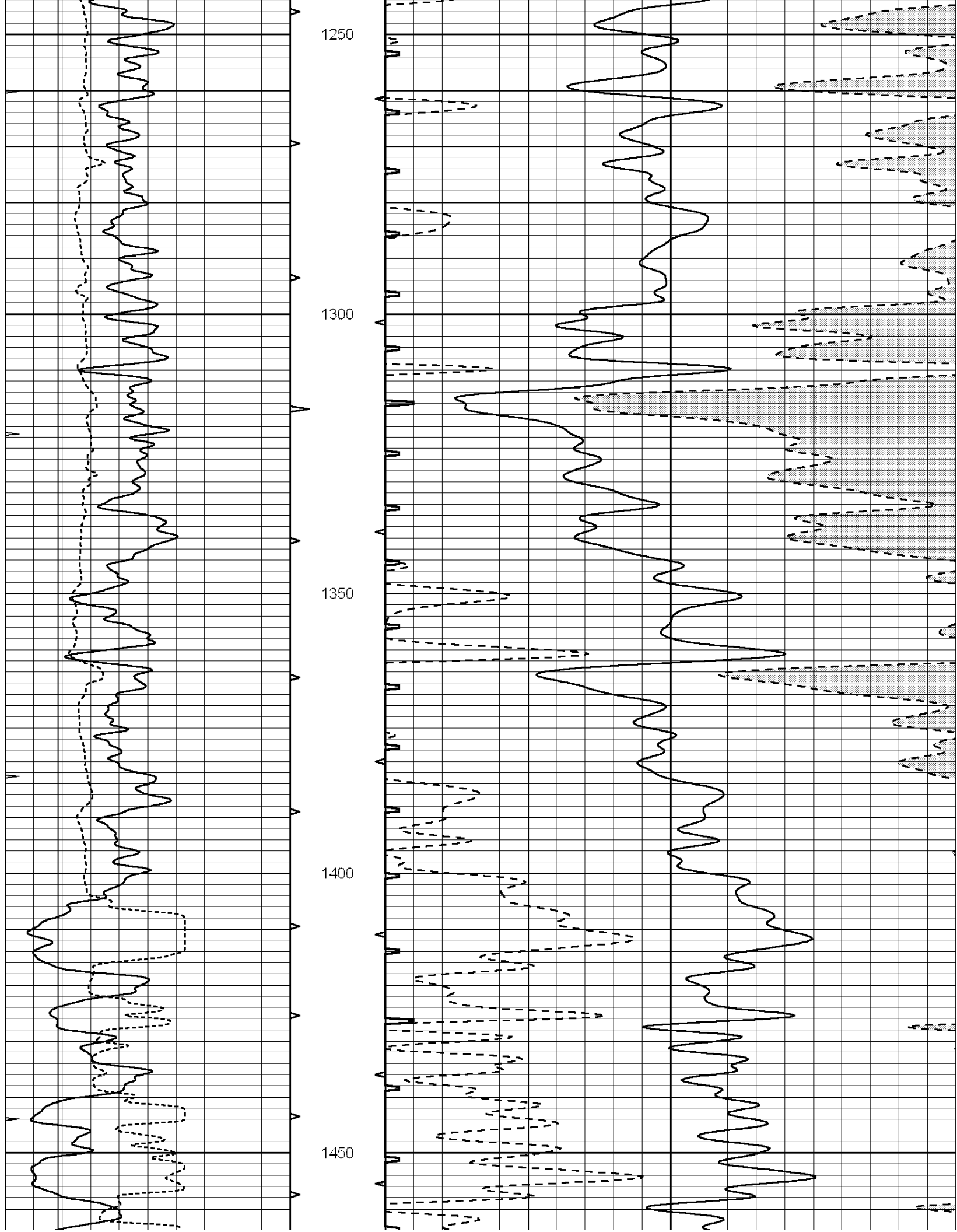
0	GAMMA RAY (GAPI)	150	ABHV	140	DELTA TIME (usec/ft)	40
6	MELCAL (in)	16	10 (ft3)	0 30	SONIC POROSITY (pu)	-10
0	MINMK	20	TBHV	0	ITT (msec)	20
			0 (ft3)	10		

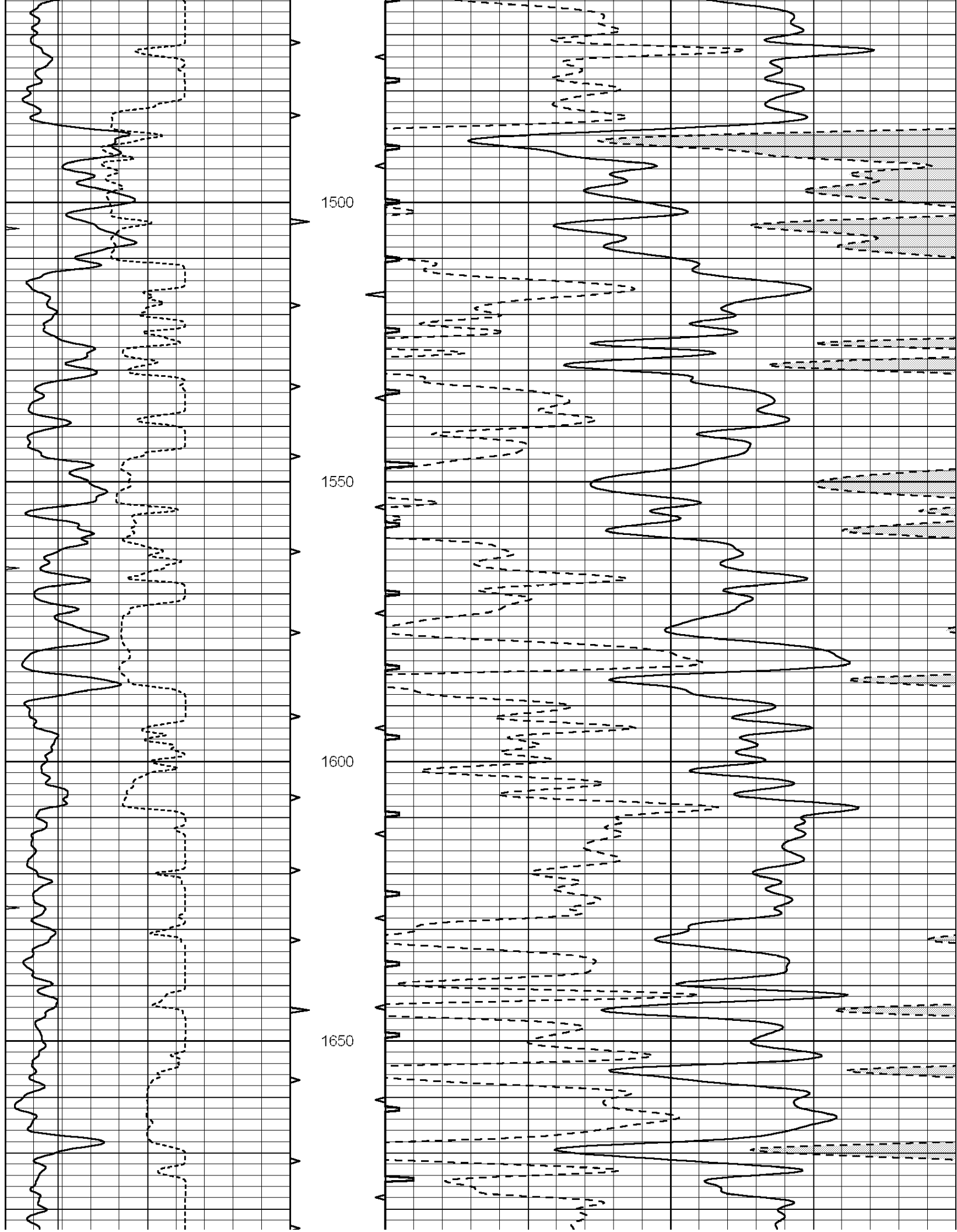


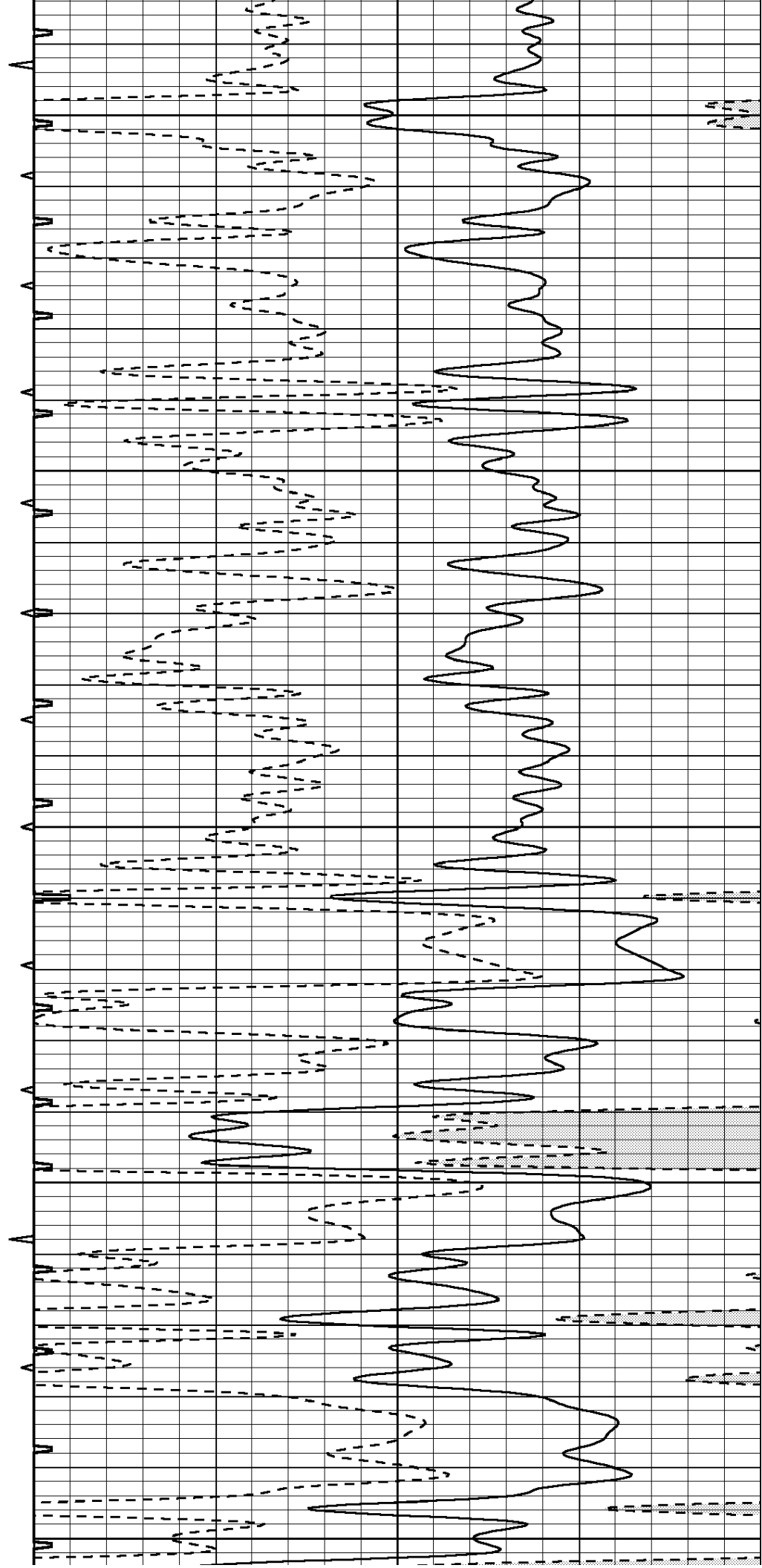
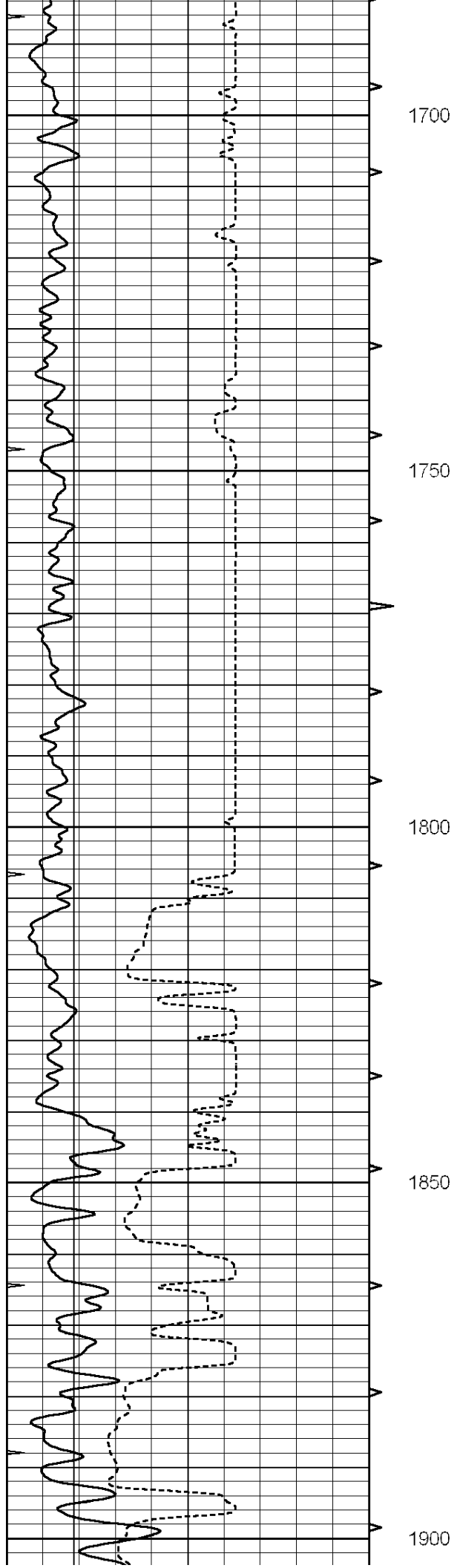


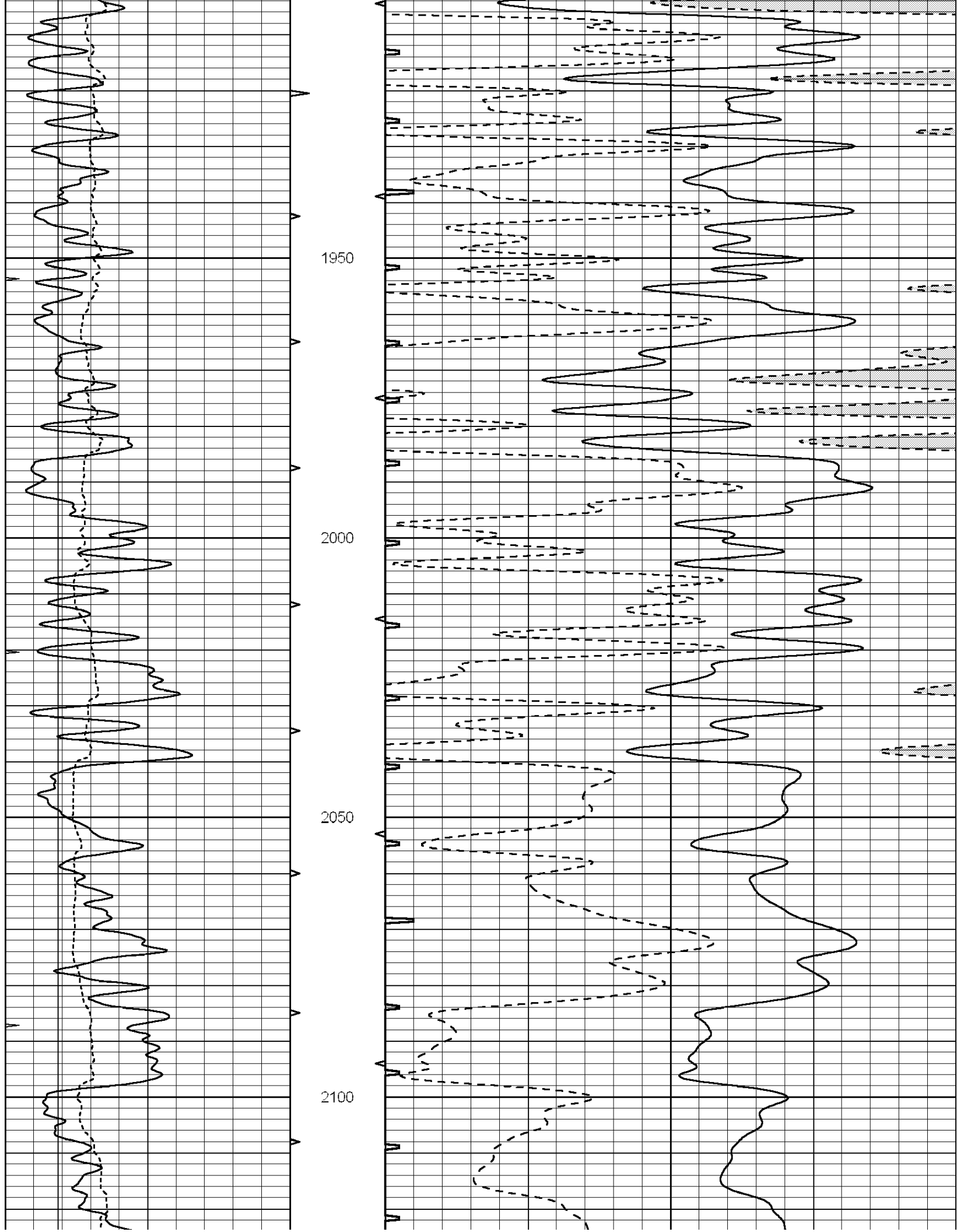


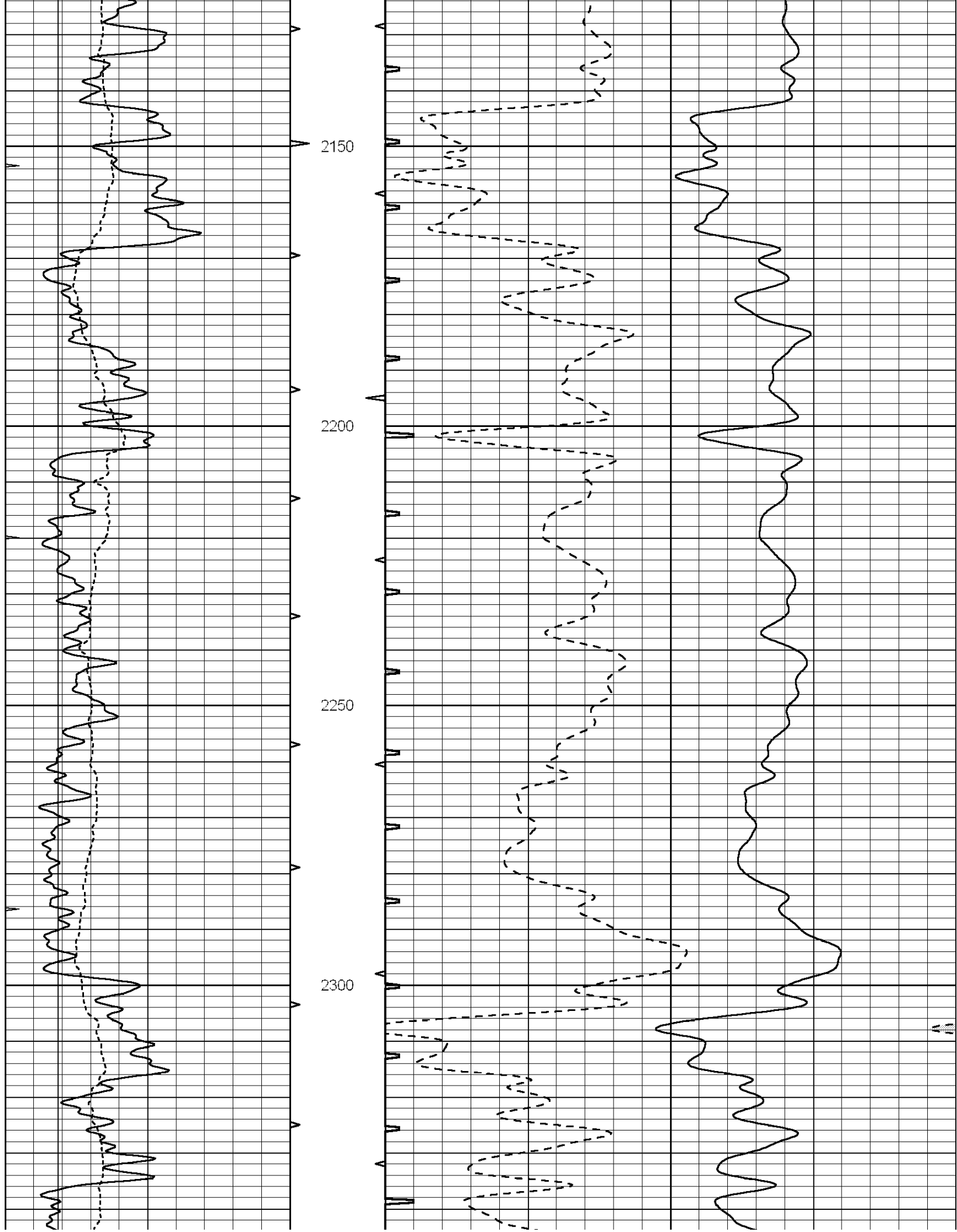


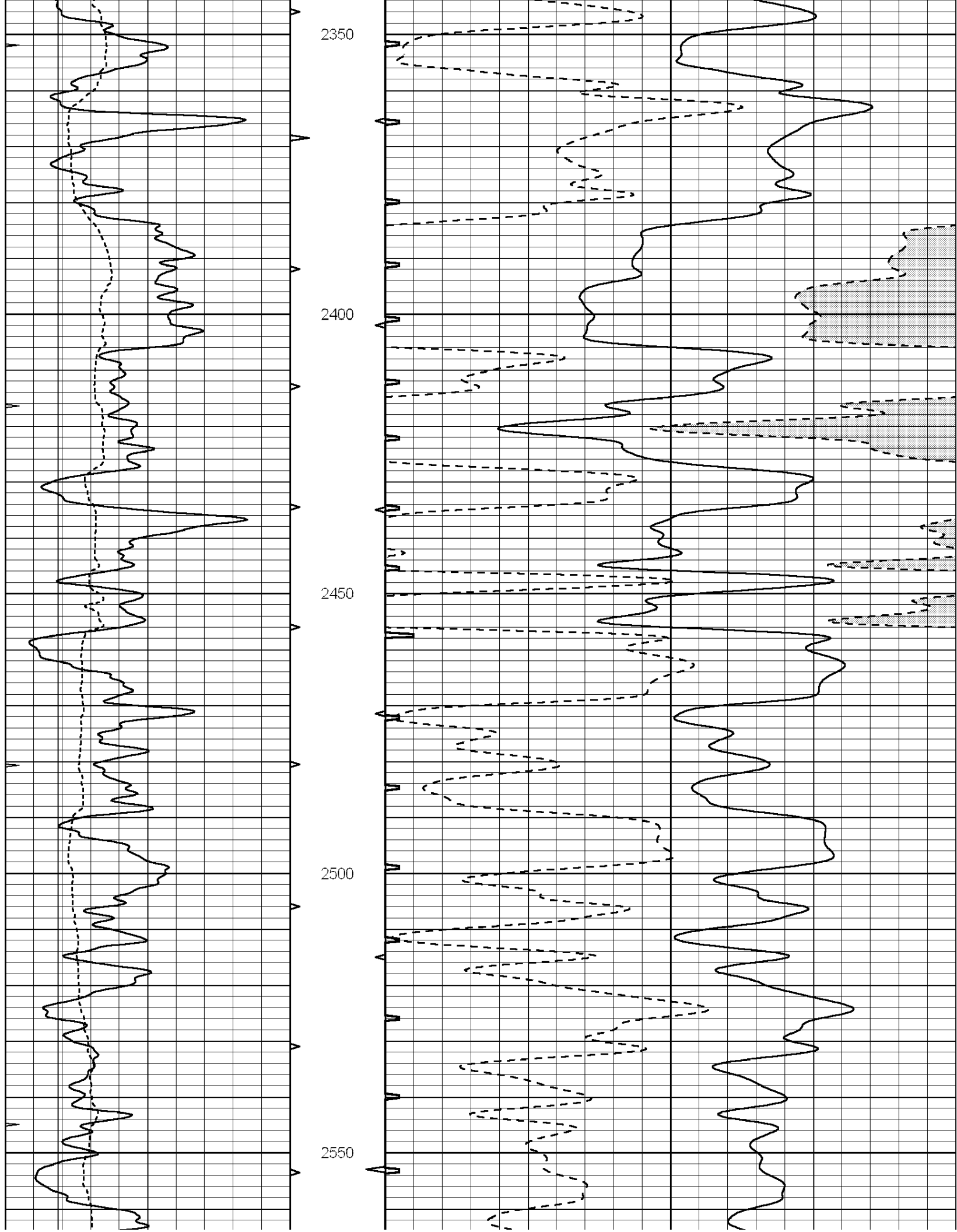


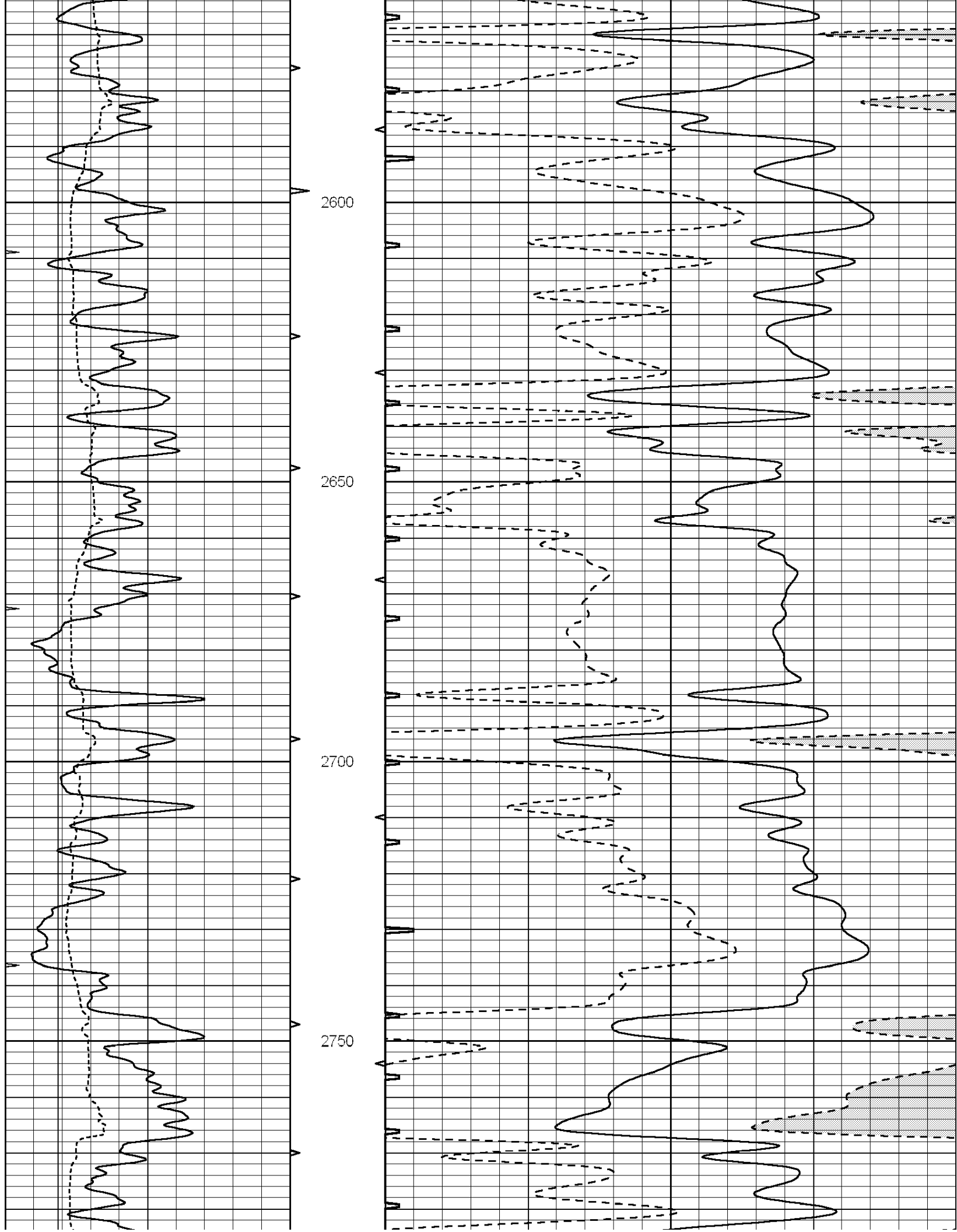


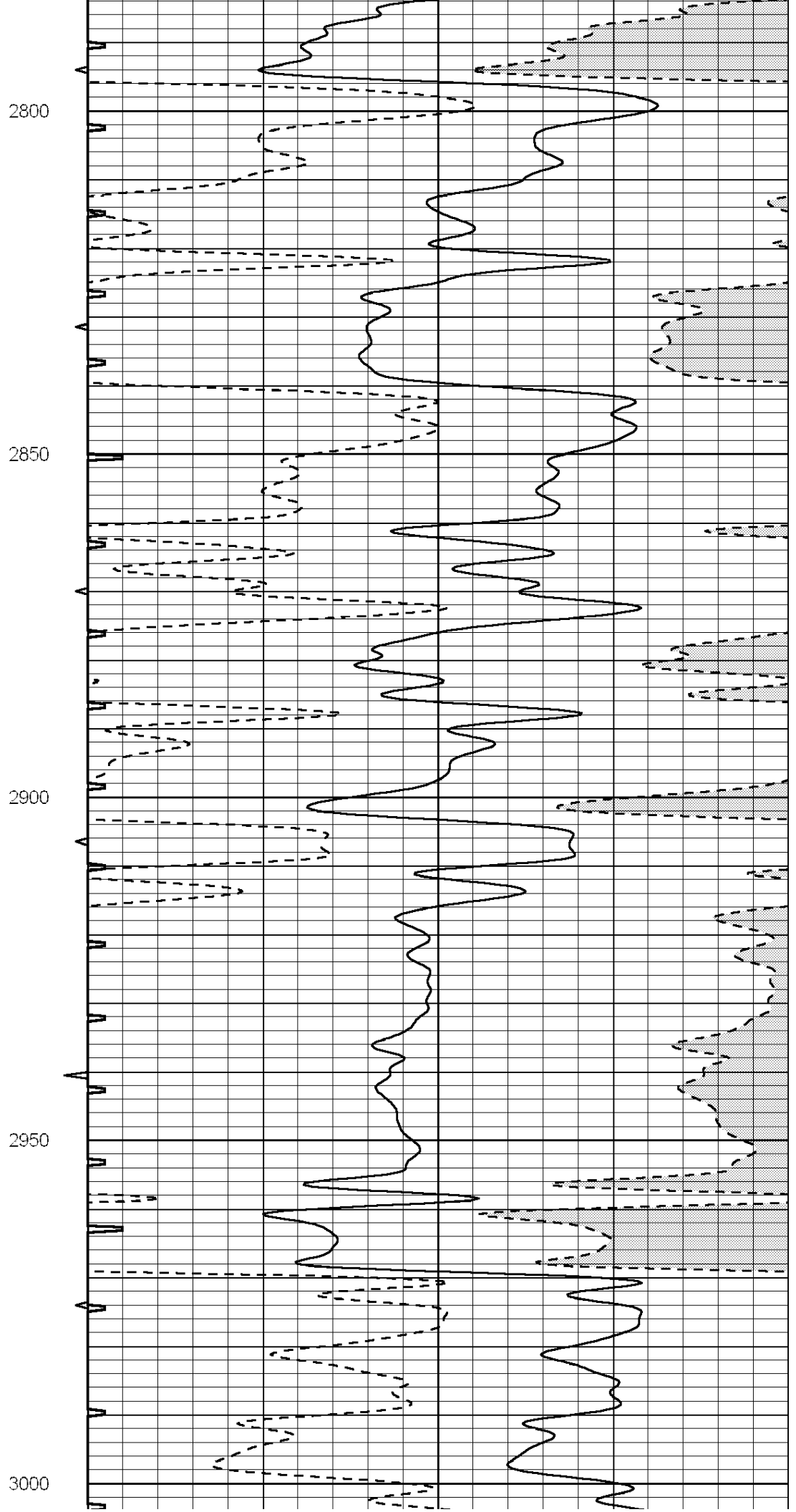
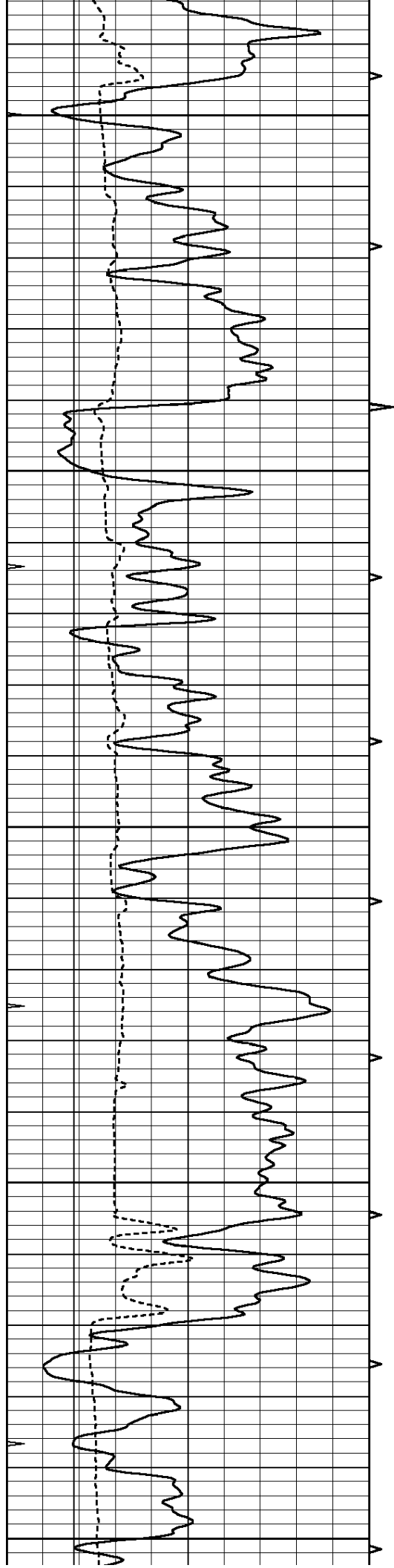


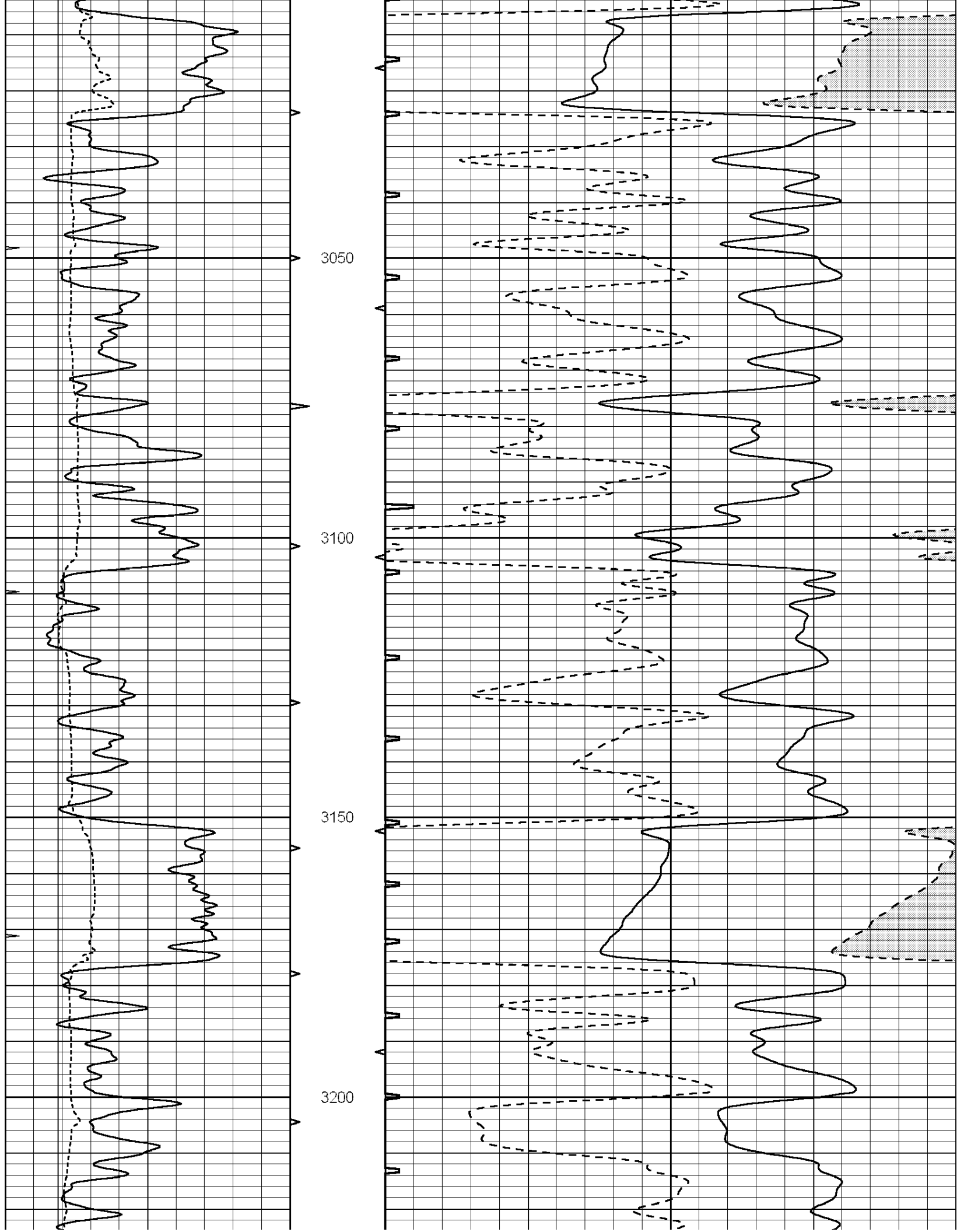


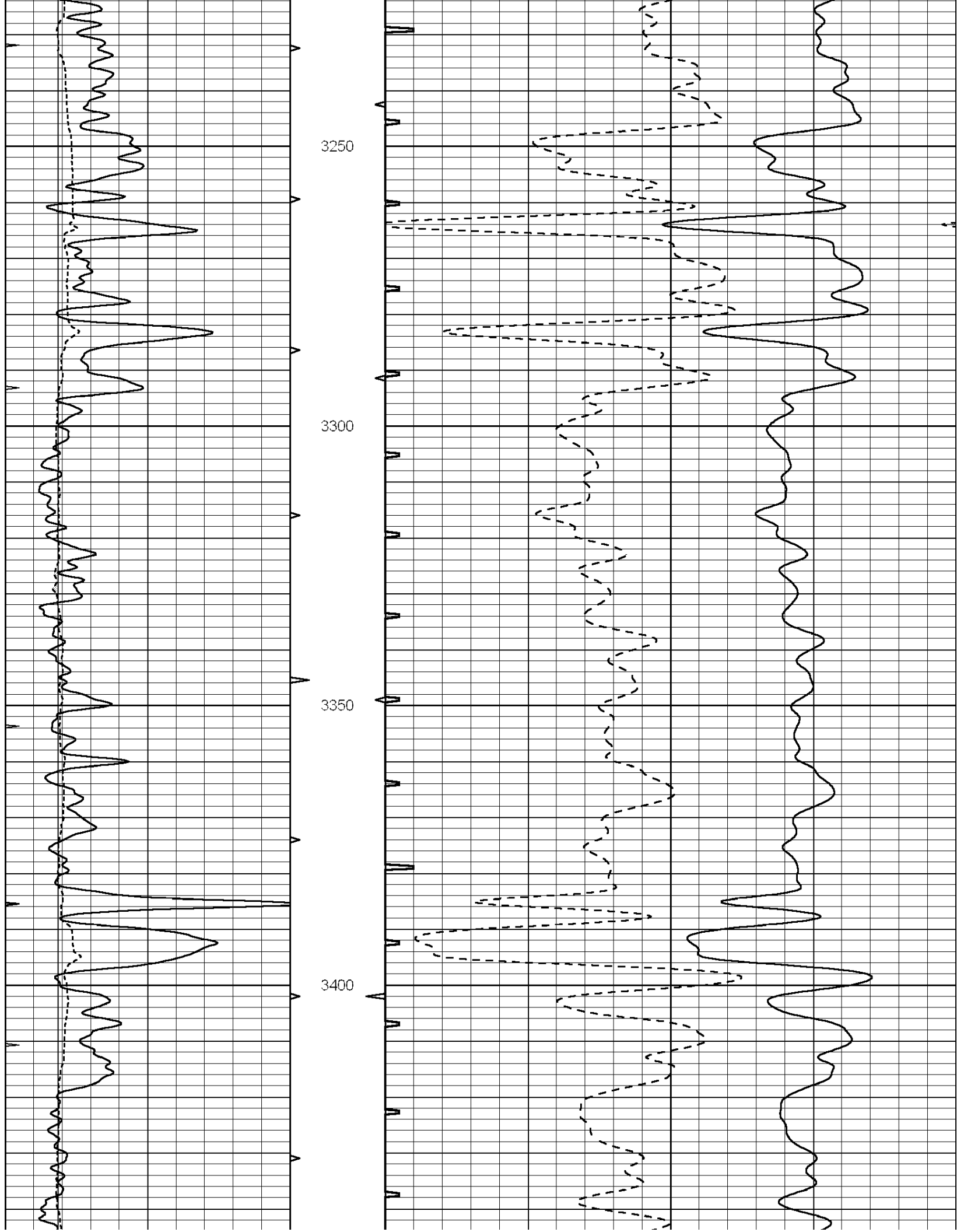


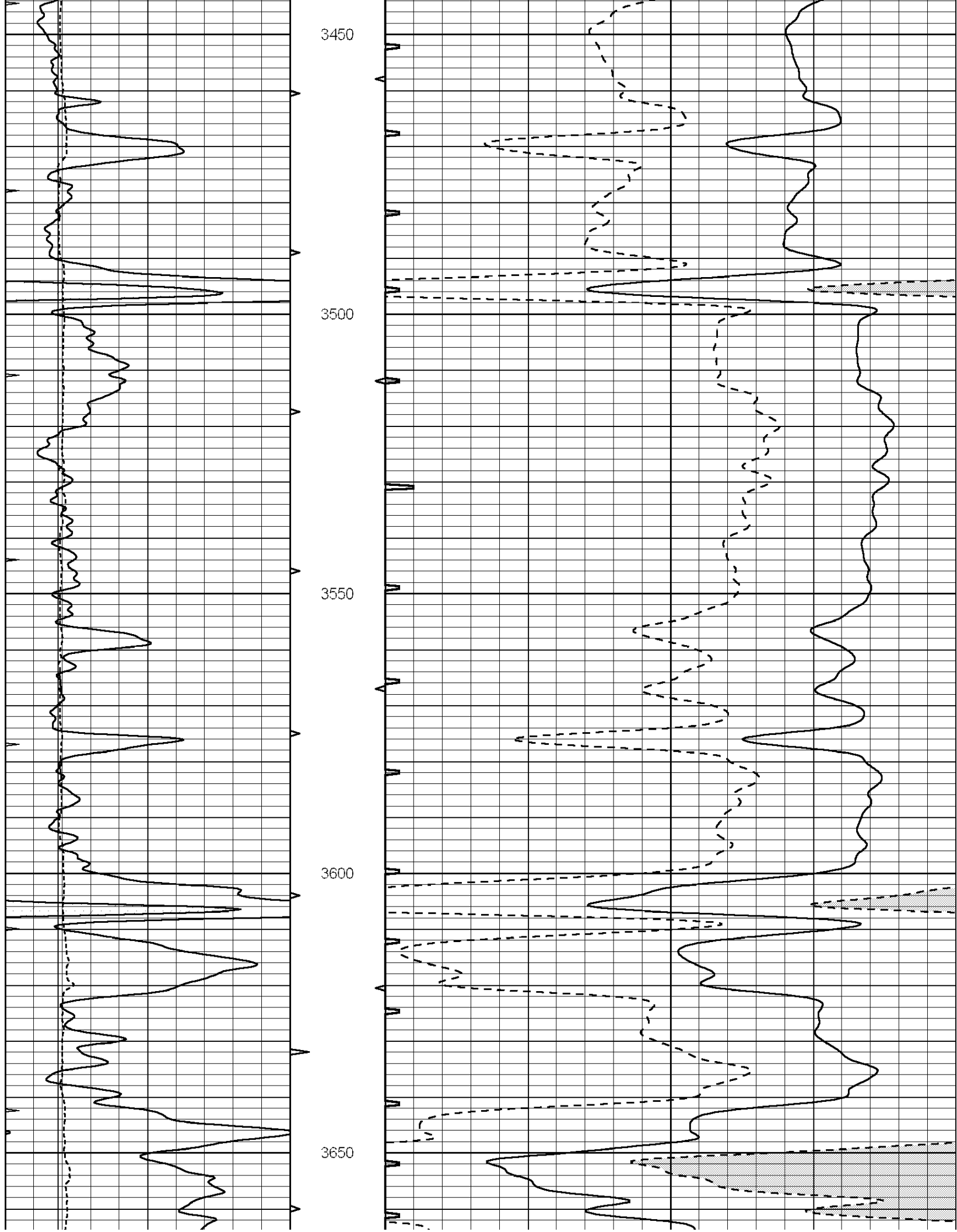


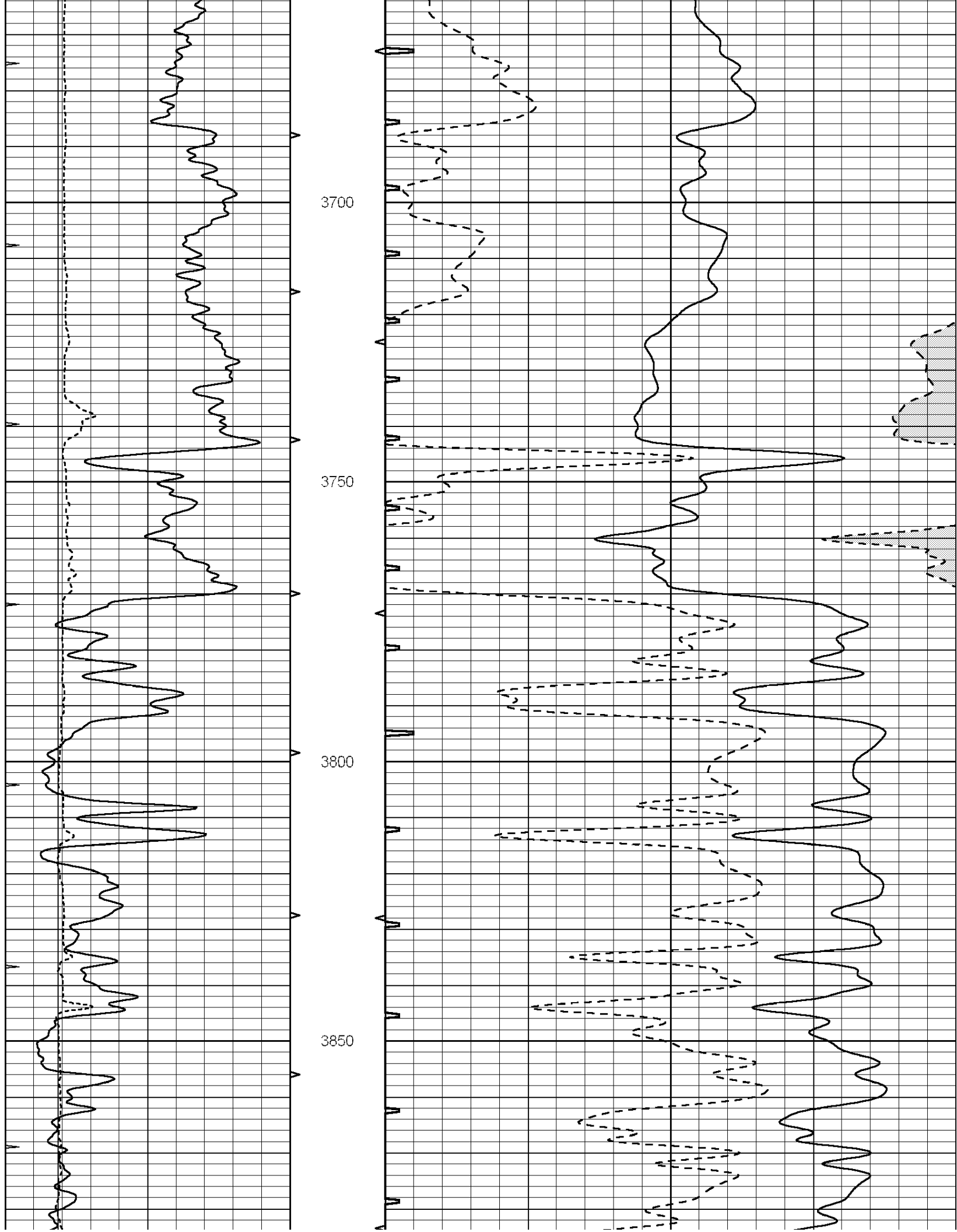


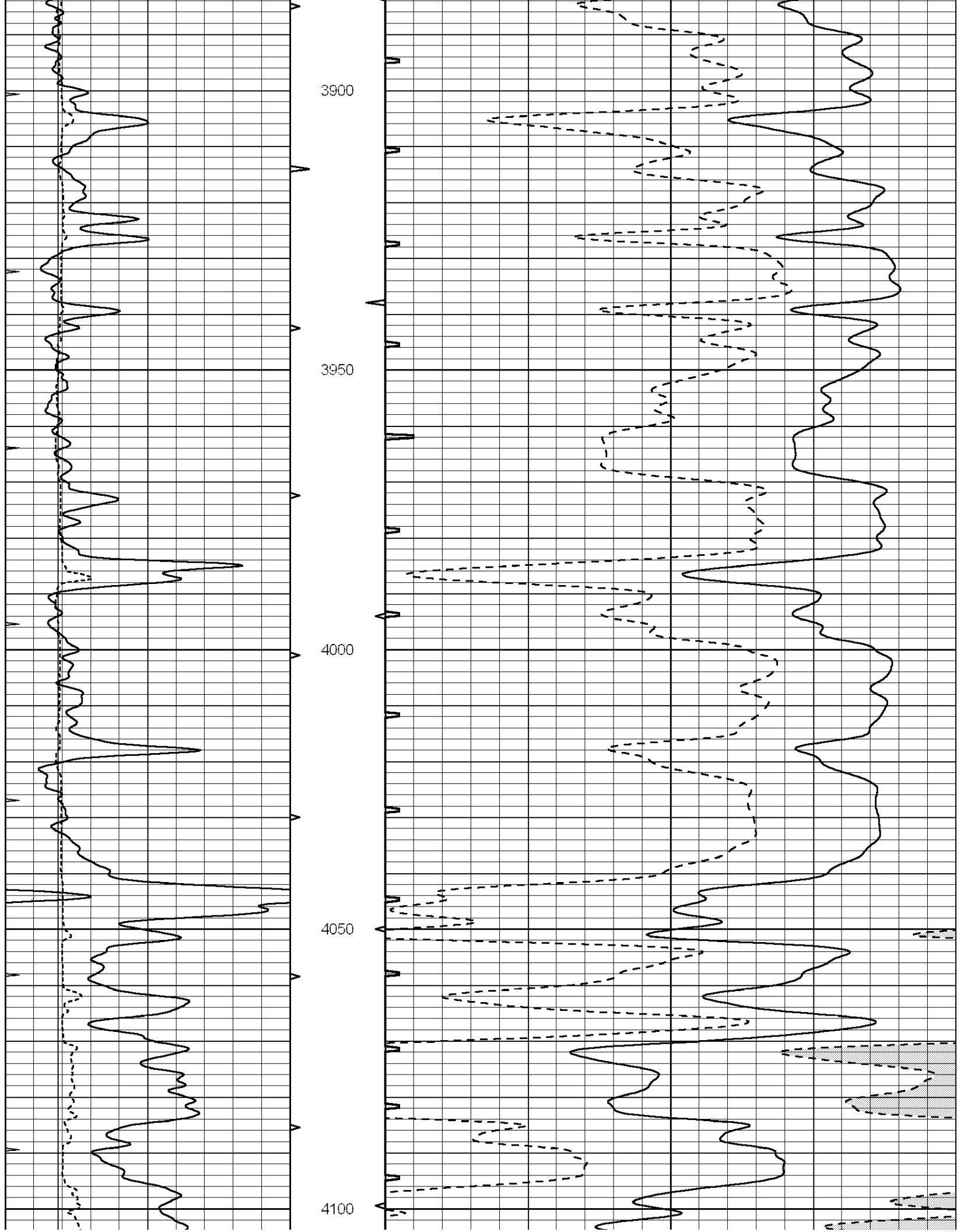


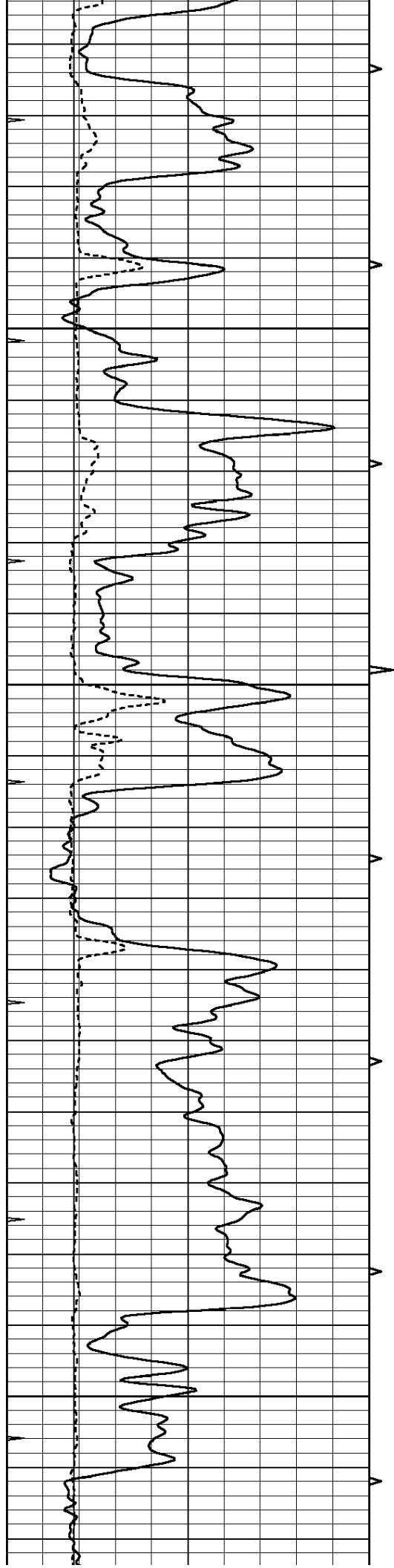










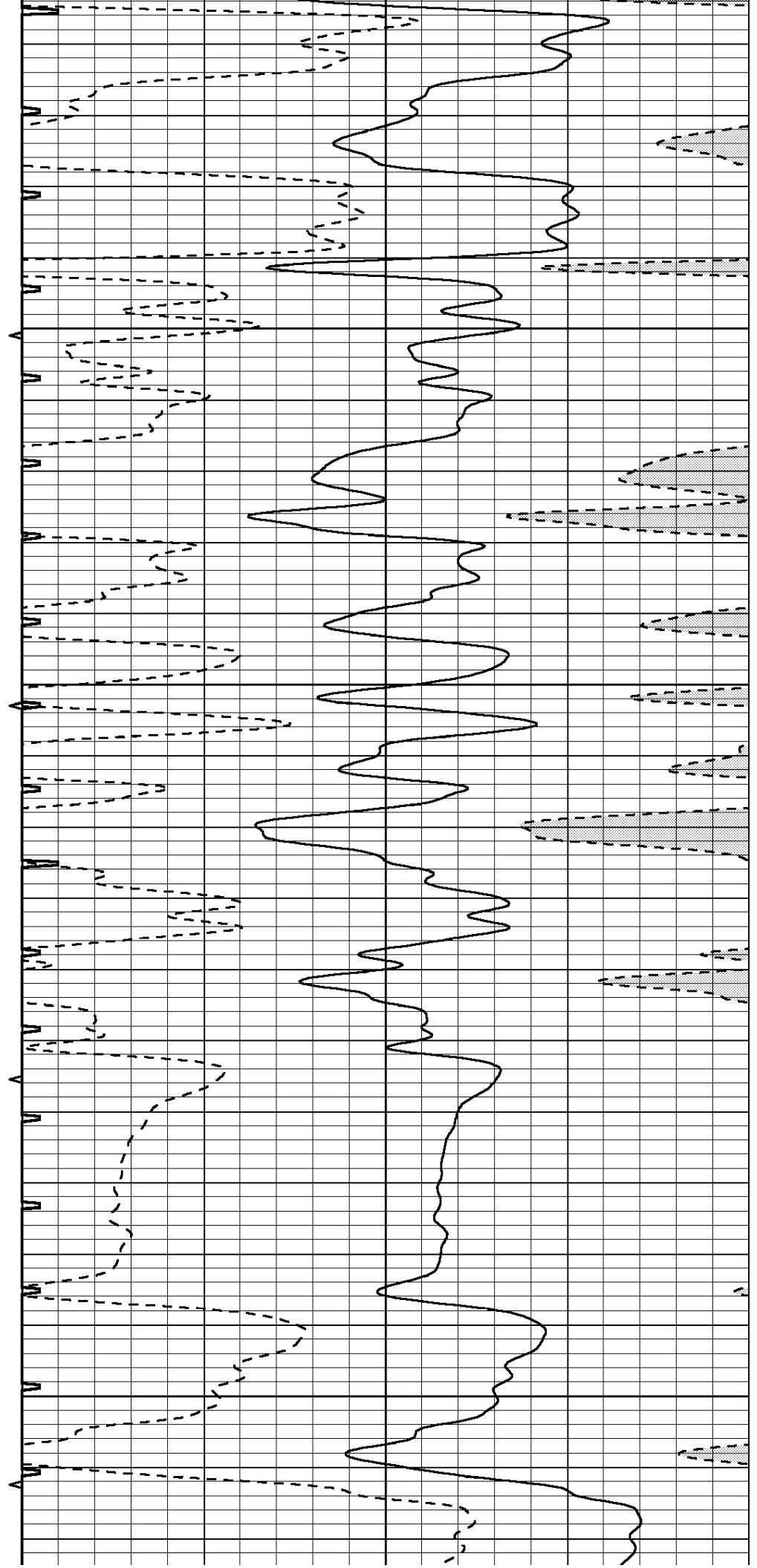


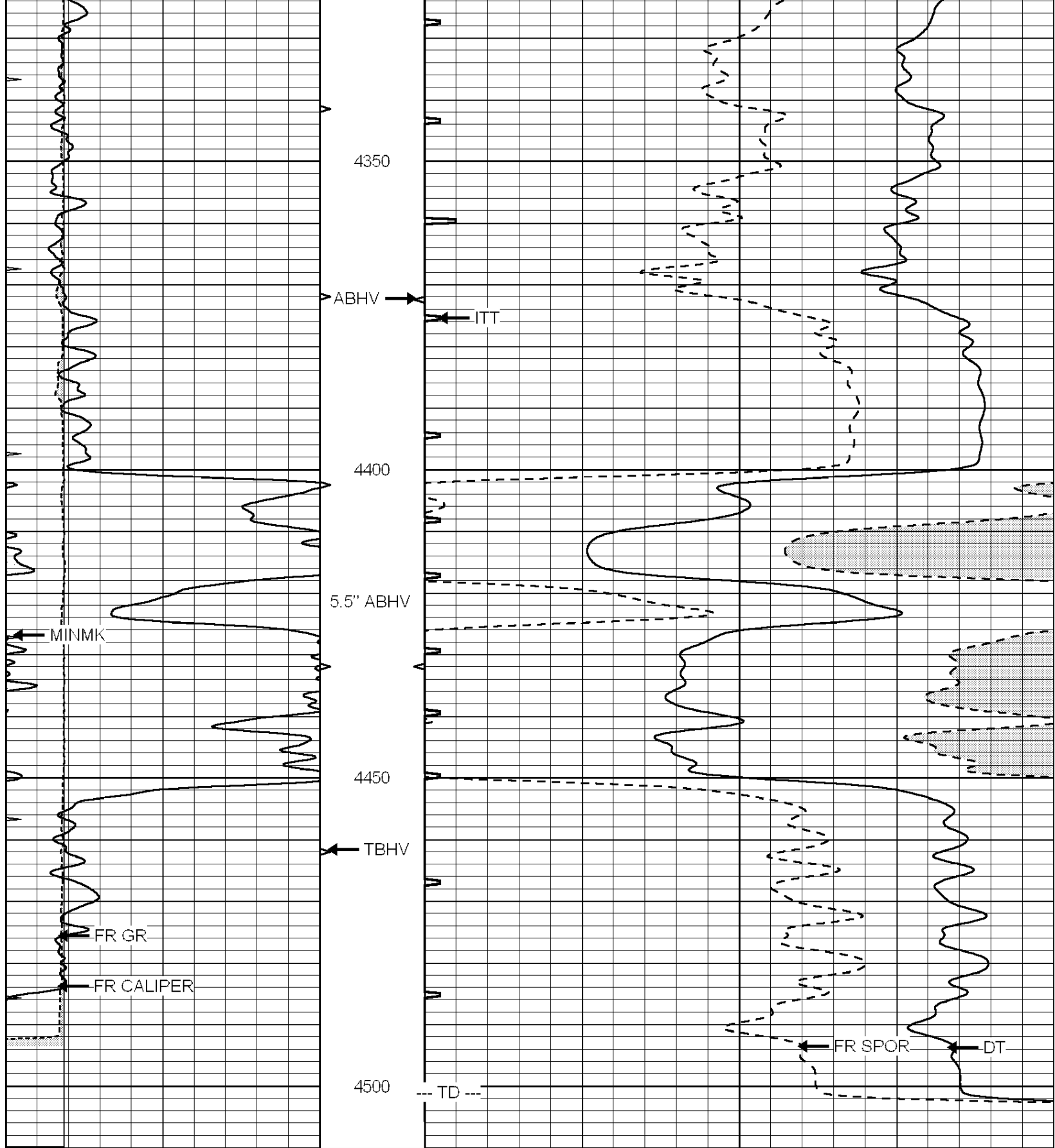
4150

4200

4250

4300





0	GAMMA RAY (GAPI)	150	ABHV	140	DELTA TIME (usec/ft)	40	
6	MELCAL (in)	16	10 (ft3)	0	30	SONIC POROSITY (pu)	-10
0	MINMK	20	TBHV	0	ITT (msec)	20	
			0 (ft3)	10			

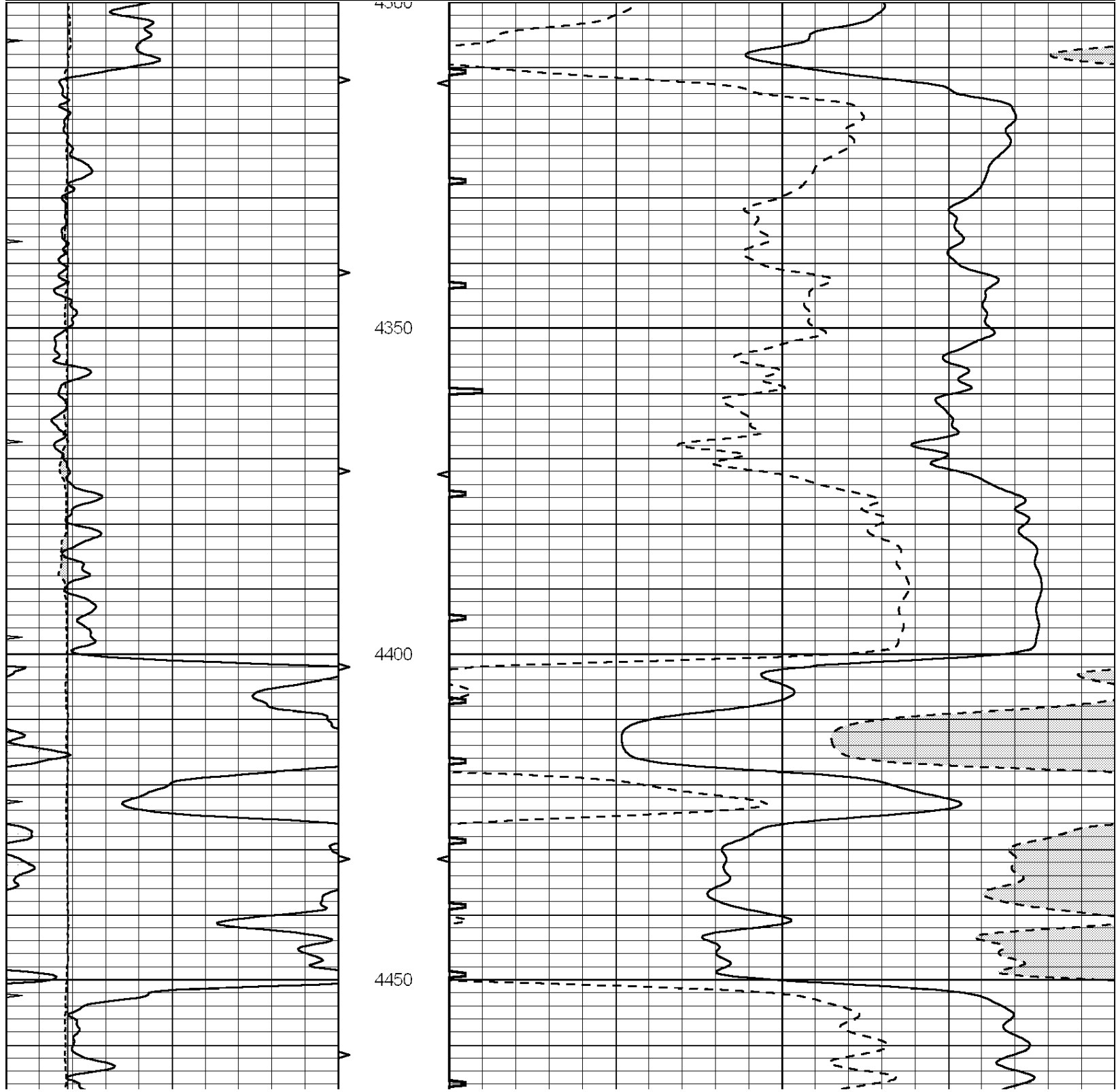


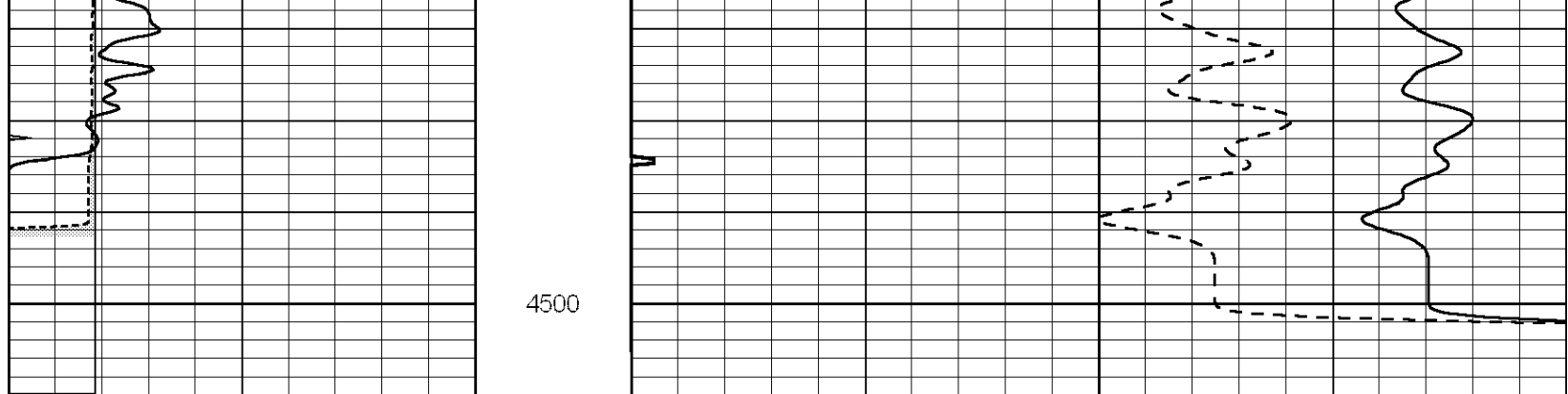
Hays, Kansas

REPEAT SECTION

Database File: 009125ddn.db
 Dataset Pathname: pass3.2A
 Presentation Format: slt
 Dataset Creation: Wed May 23 13:06:40 2012
 Charted by: Depth in Feet scaled 1:240

0	GAMMA RAY (GAPI)	150	ABHV	140	DELTA TIME (usec/ft)	40	
6	MELCAL (in)	16	10 (ft3)	0	30	SONIC POROSITY (pu)	-10
0	MINMK	20	TBHV	0	ITT (msec)	20	
			0 (ft3)	10			





4500

0	GAMMA RAY (GAPI)	150	ABHV	140	DELTA TIME (usec/ft)	40
6	MELCAL (in)	16	10 (ft3) 0	30	SONIC POROSITY (pu)	-10
0	MINMK	20	TBHV	0	ITT (msec)	20
			0 (ft3) 10			