



SUPERIOR
Hays,
Kansas

SONIC
LOG

Company VINCENT OIL CORPORATION
Well SCHNEWEIS #1-14
Field WILDCAT
County FORD
State KANSAS

Company VINCENT OIL CORPORATION
Well SCHNEWEIS #1-14
Field WILDCAT
County FORD State KANSAS

Location: API # : 15-057-20804-0000
2525' FSL & 390' FEL
SEC 14 TWP 27S RGE 24W
Permanent Datum GROUND LEVEL Elevation 2452
Log Measured From KELLY BUSHING 8' A.G.L.
Drilling Measured From KELLY BUSHING
Other Services
CDL/CNL/PE
DIL/MEL
Elevation
K.B. 2460
D.F. 2458
G.L. 2452

Date	5/23/12		
Run Number	TWO		
Depth Driller	5100		
Depth Logger	5096		
Bottom Logged Interval	5084		
Top Log Interval	400		
Casing Driller	8 5/8"@494'		
Casing Logger	494		
Bit Size	7 7/8"		
Type Fluid in Hole	CHEMICAL MUD	CHLORIDES 5,600 PPM	
Density / Viscosity	9.2/45		
pH / Fluid Loss	9.5/9.6		
Source of Sample	FLOWLINE		
Rm @ Meas. Temp	.800@80F		
Rmt @ Meas. Temp	.600@80F		
Rmc @ Meas. Temp	.960@80F		
Source of Rmf / Rmc	MEASUREMENT		
Rm @ BHT	.508@126F		
Time Circulation Stopped	5.5 HOURS		
Time Logger on Bottom	2:15 A.M.		
Maximum Recorded Temperature	126F		
Equipment Number	4010		
Location	HAYS, KANSAS		
Recorded By	JEFF LUEBBERS		
Witnessed By	BRAD RINE		

<<< Fold Here >>>

All interpretations are opinions based on inferences from electrical or other measurements and we cannot and do not guarantee the accuracy or correctness of any interpretation, and we shall not, except in the case of gross or willful negligence on our part, be liable or responsible for any loss, costs, damages, or expenses incurred or sustained by anyone resulting from any interpretation made by any of our officers, agents or employees. These interpretations are also subject to our general terms and conditions set out in our current Price Schedule.

Comments

THANK YOU FOR USING SUPERIOR WELL SERVICE HAYS, KANSAS (785) 628-6395
DIRECTIONS
FORD, KS. & HWY 400, 8W. ON "SADDLE RD." TO "RD. 117", 3N. ON BLKTOP, W. INTO

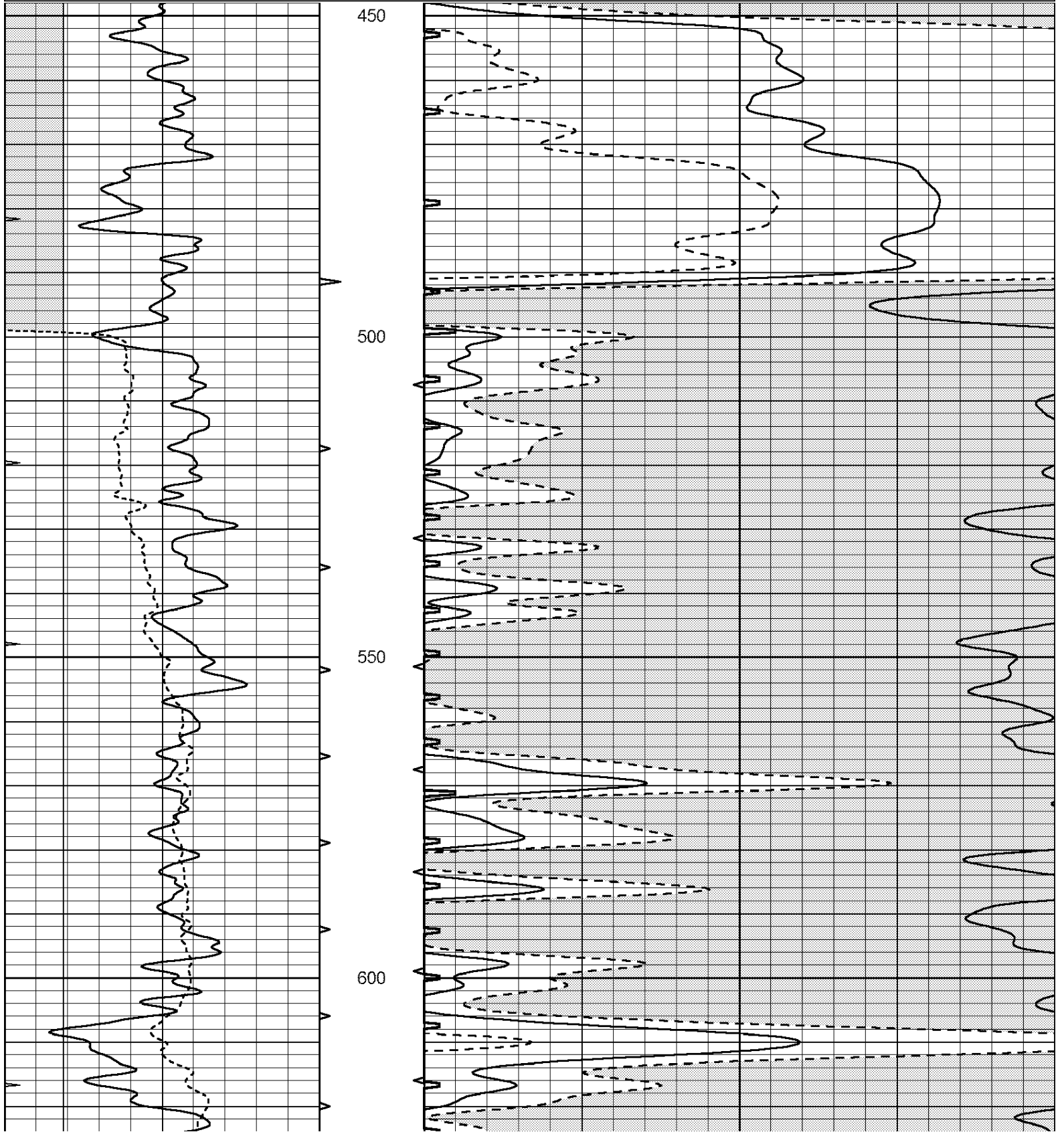


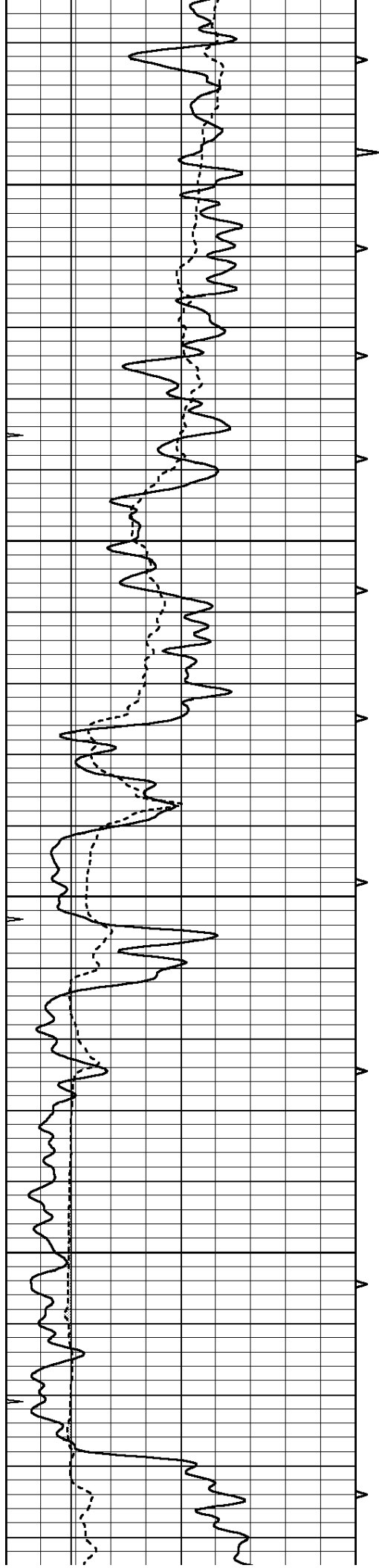
SUPERIOR
Hays,
Kansas

MAIN SECTION

Database File: 408775pe.db
 Dataset Pathname: pass6.10
 Presentation Format: slt
 Dataset Creation: Wed May 23 06:47:55 2012
 Charted by: Depth in Feet scaled 1:240

0	GAMMA RAY (GAPI)	150	ABHV	140	DELTA TIME (usec/ft)	40
6	CALIPER (in)	16	10 (ft3) 0	30	SONIC POROSITY (pu)	-10
0	MINMK	20	TBHV	0	ITT (msec)	20
			0 (ft3) 10			



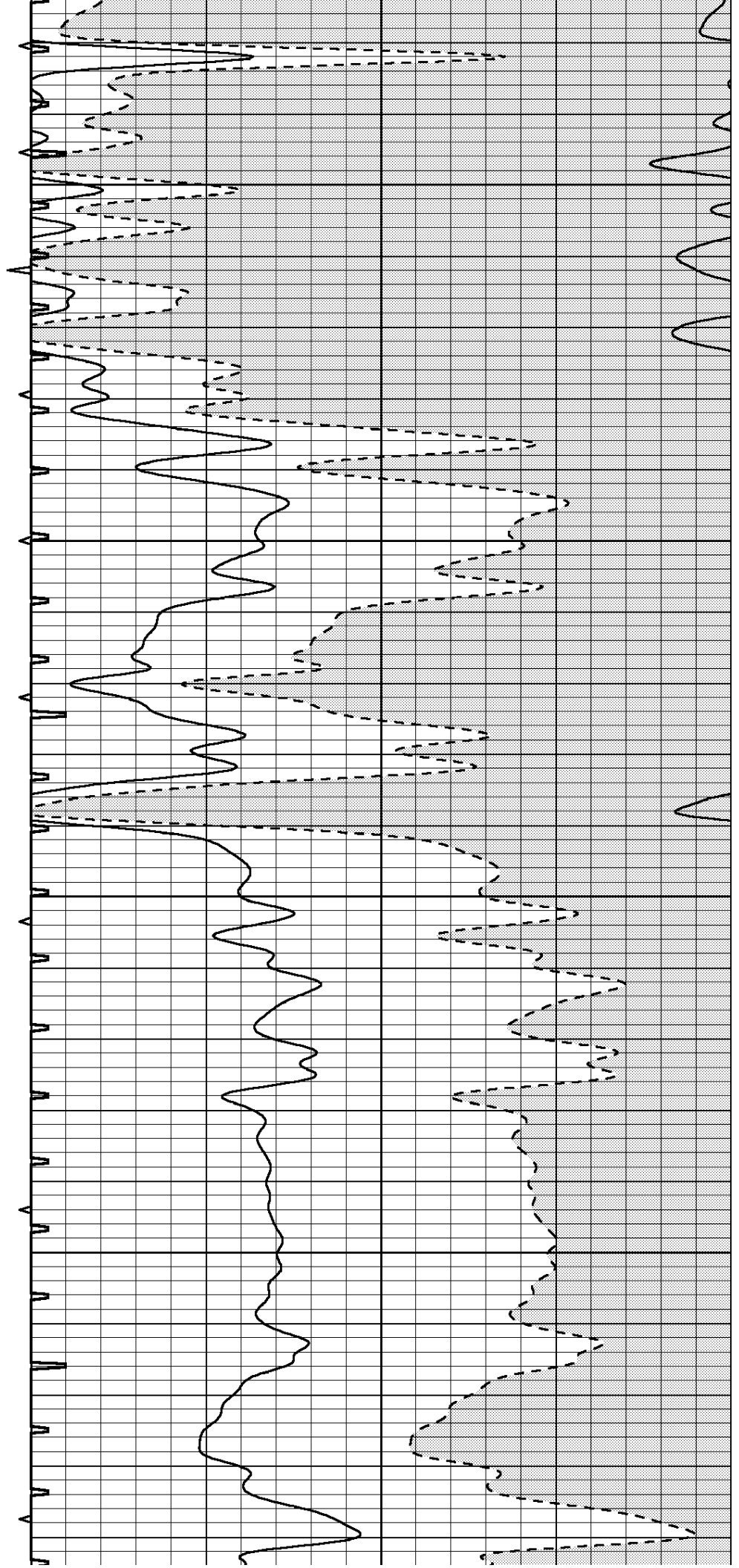


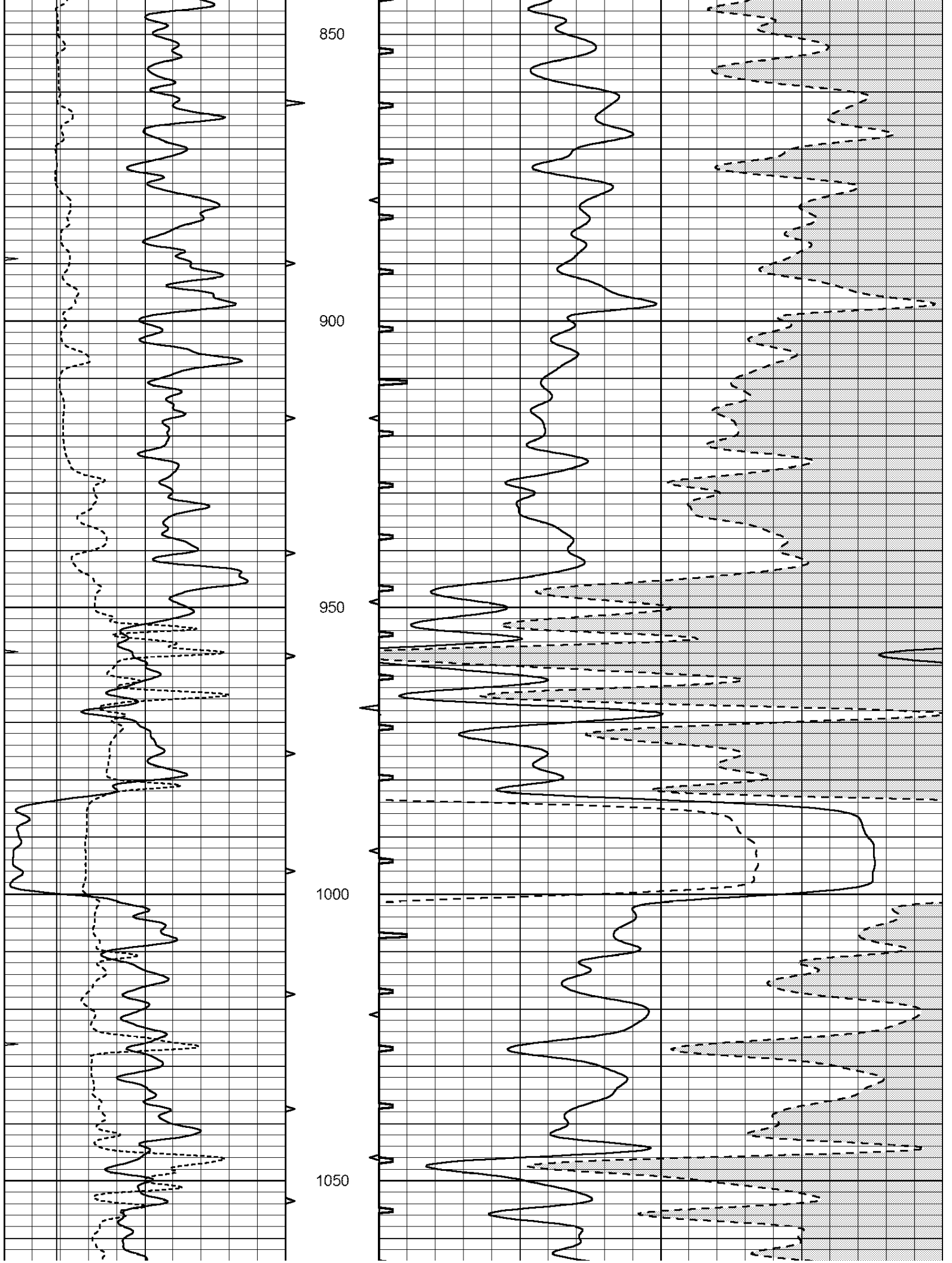
650

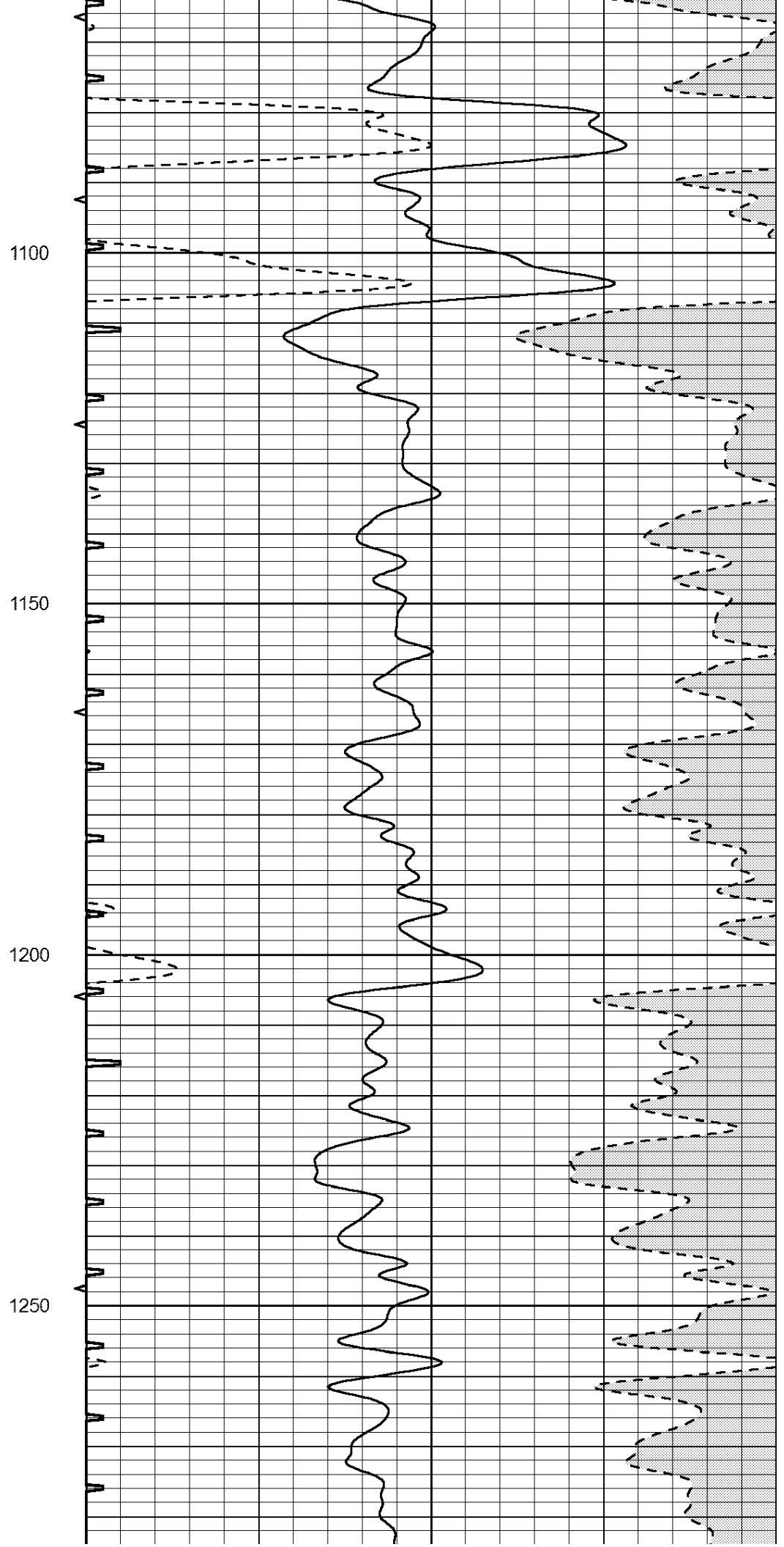
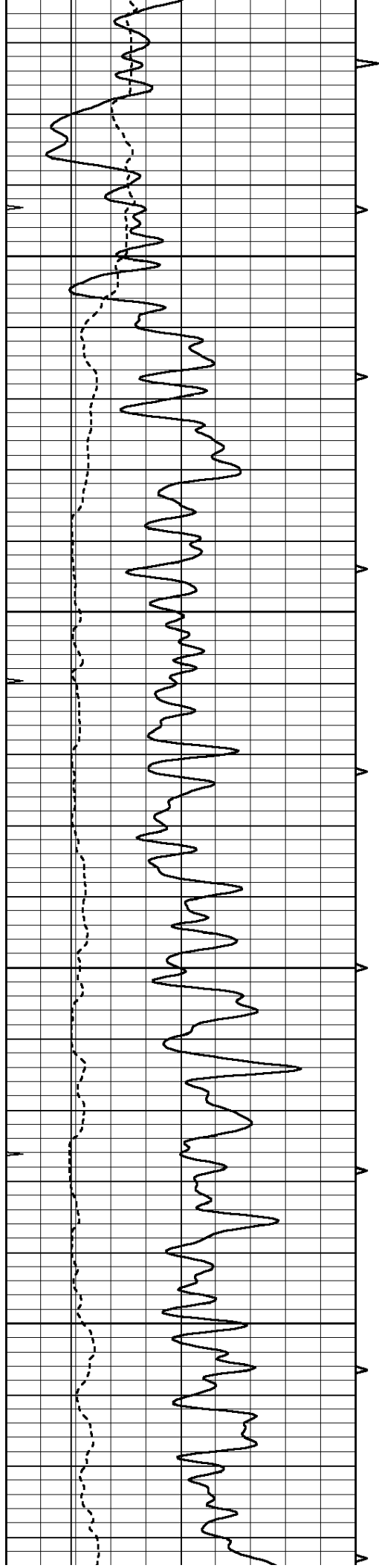
700

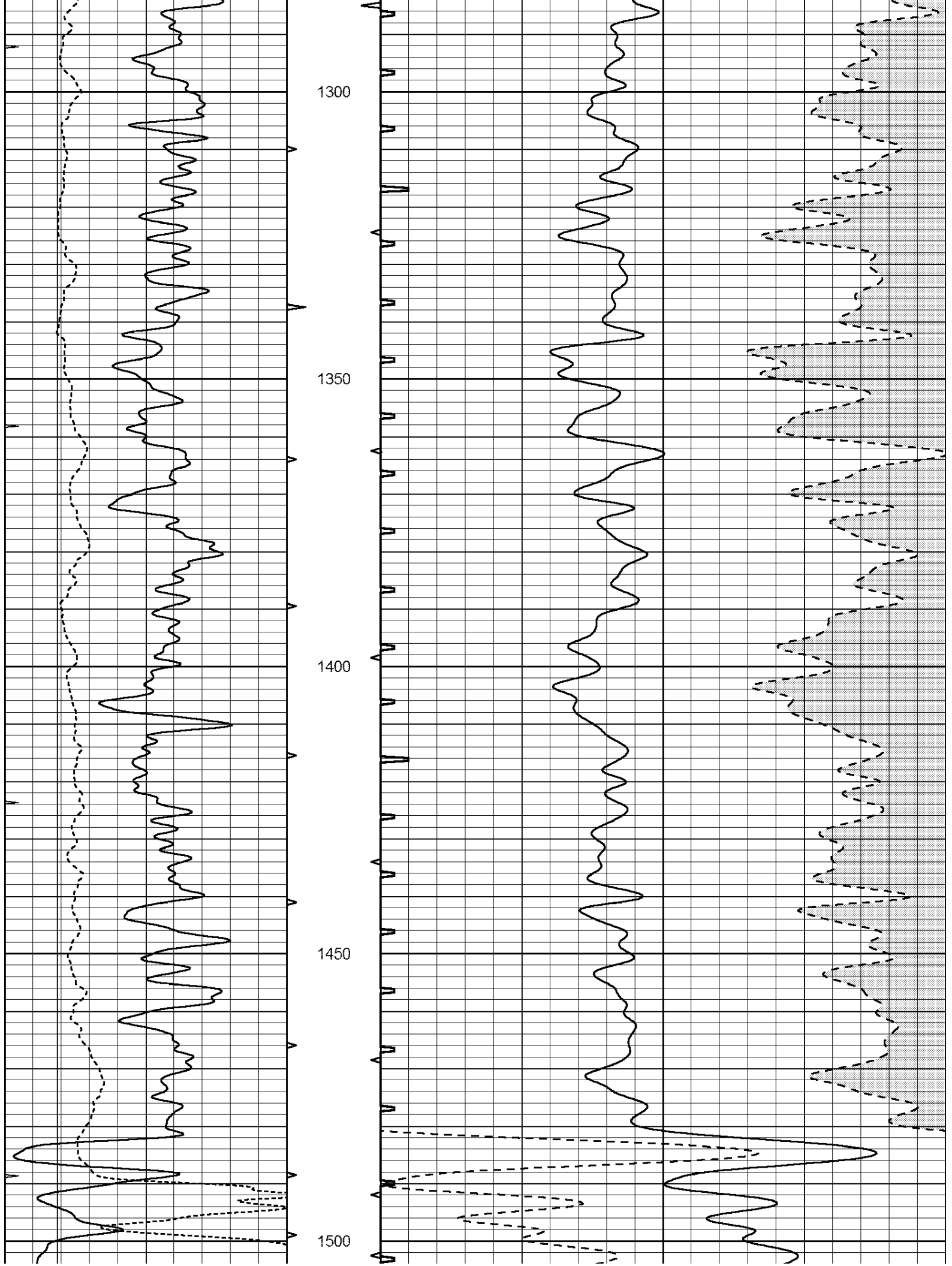
750

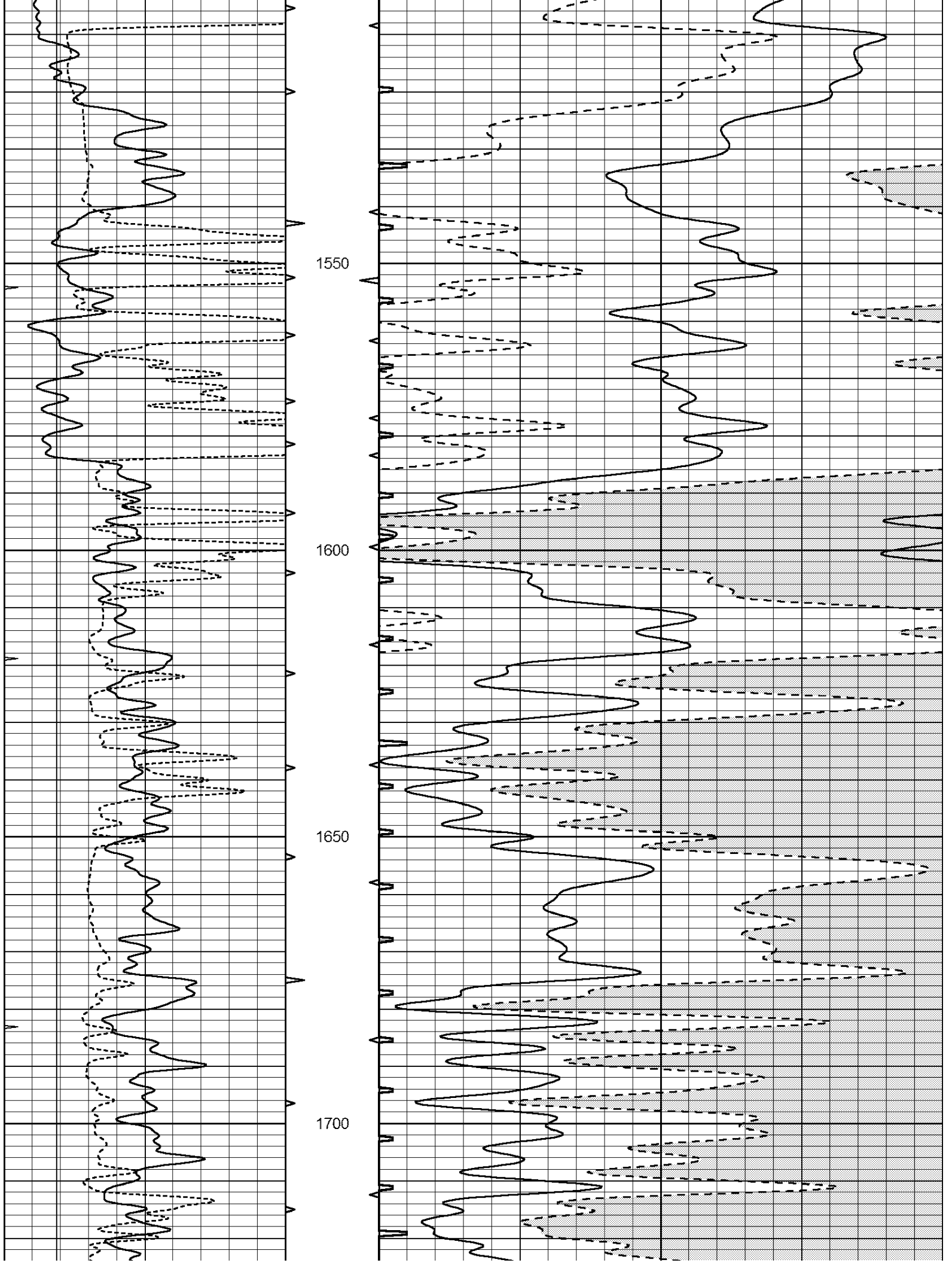
800

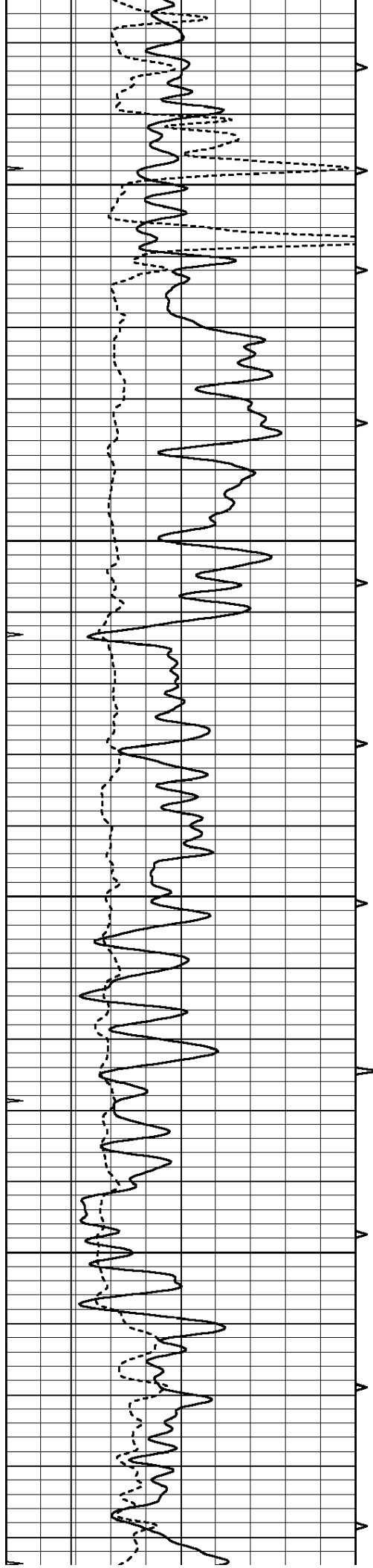










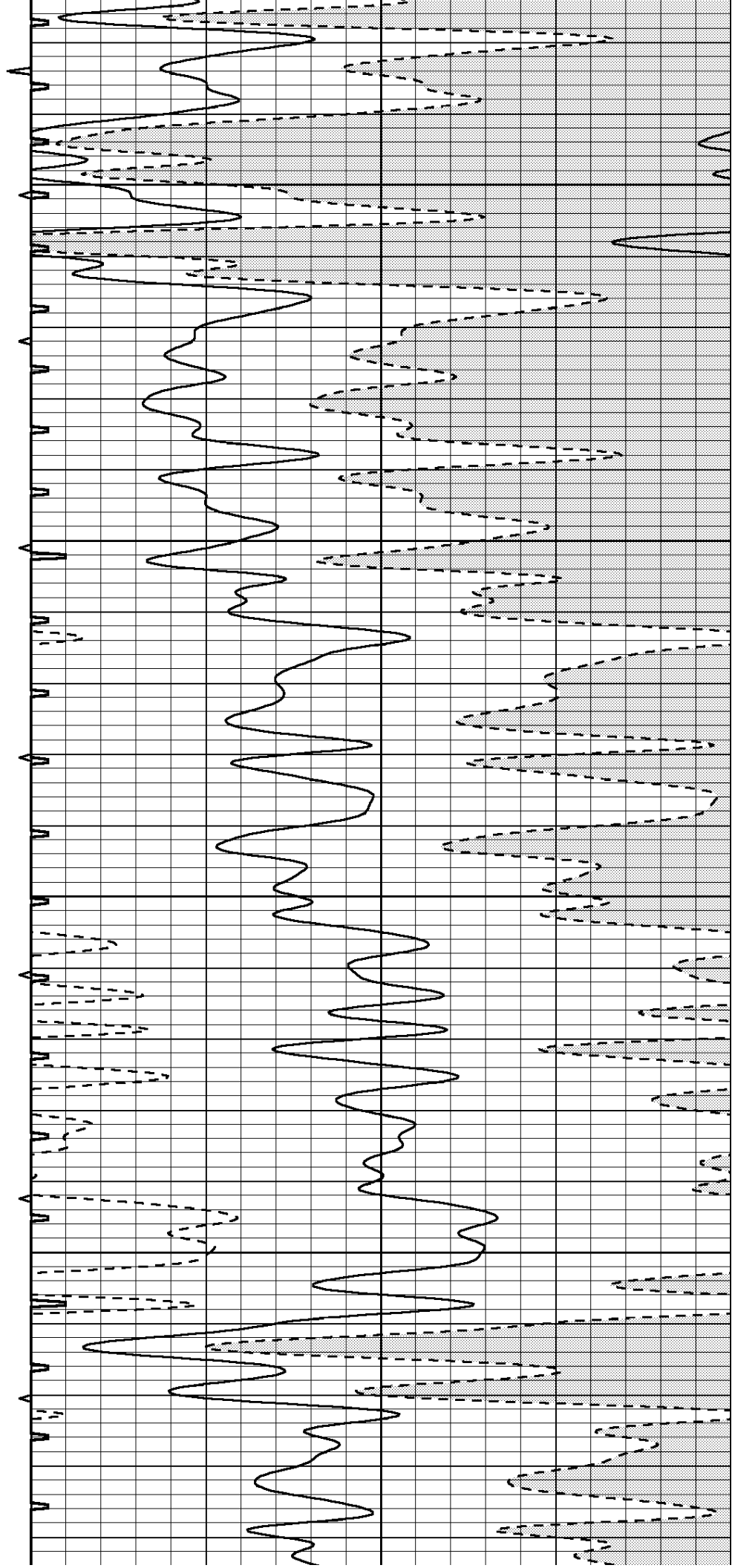


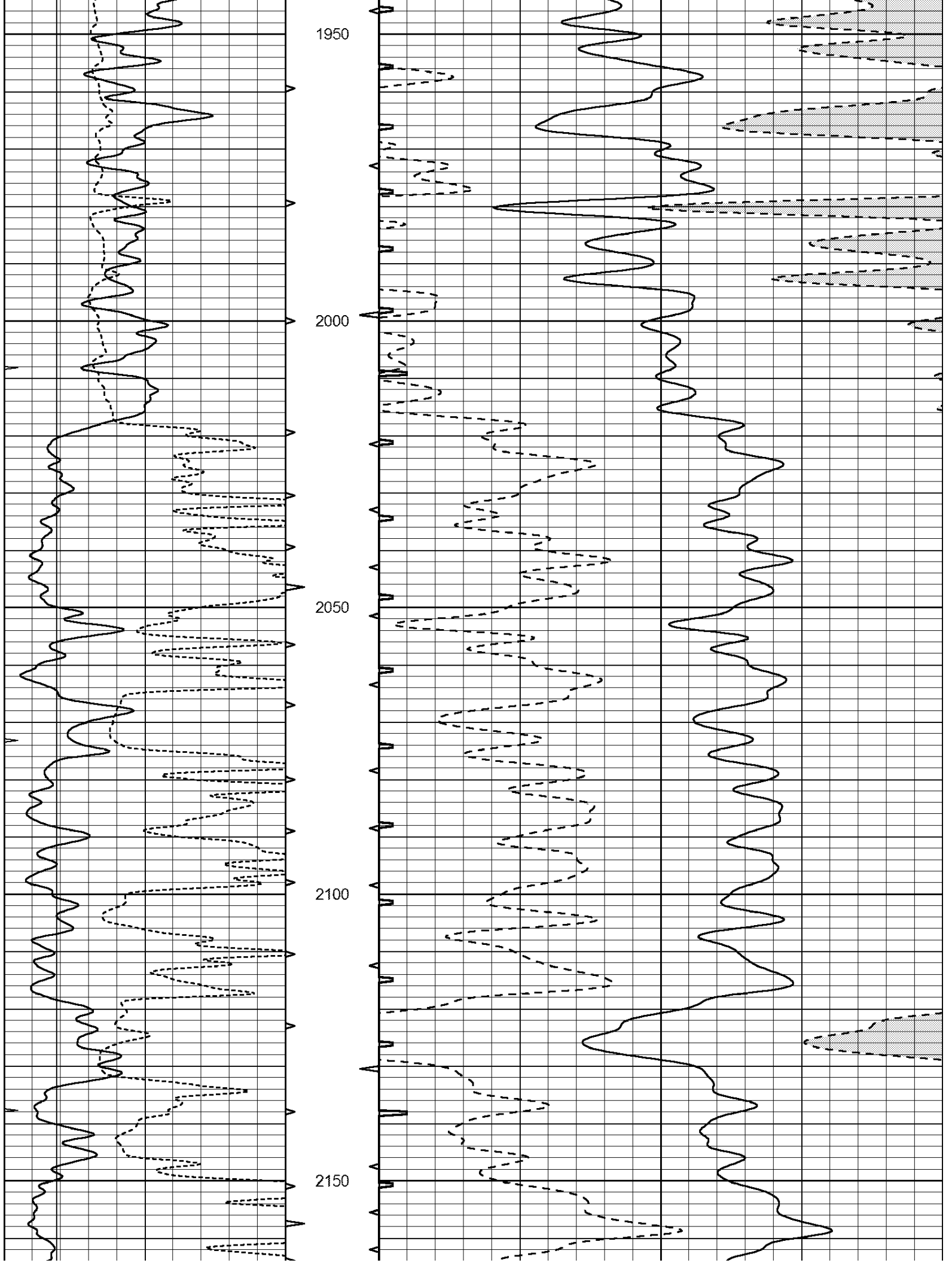
1750

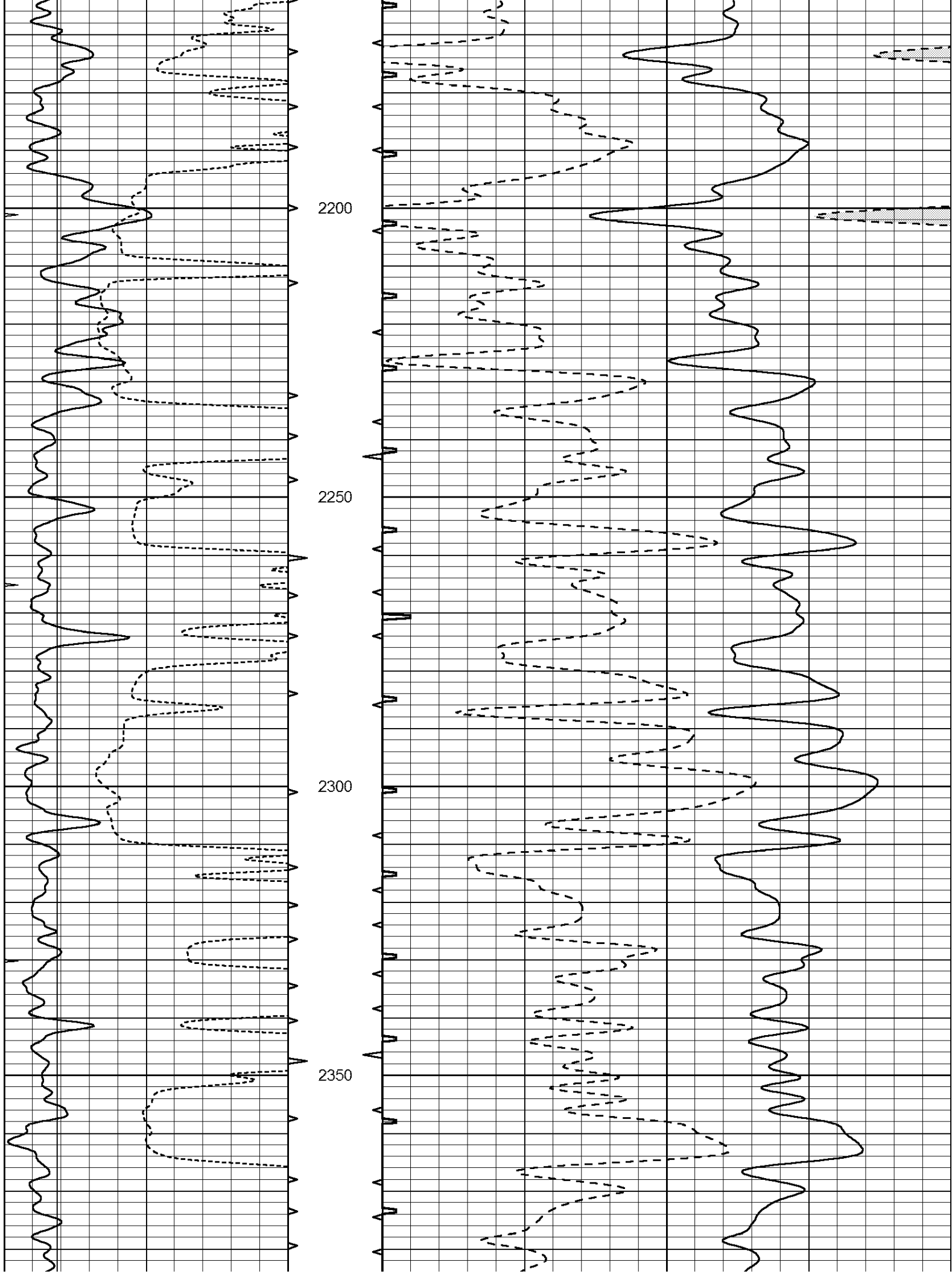
1800

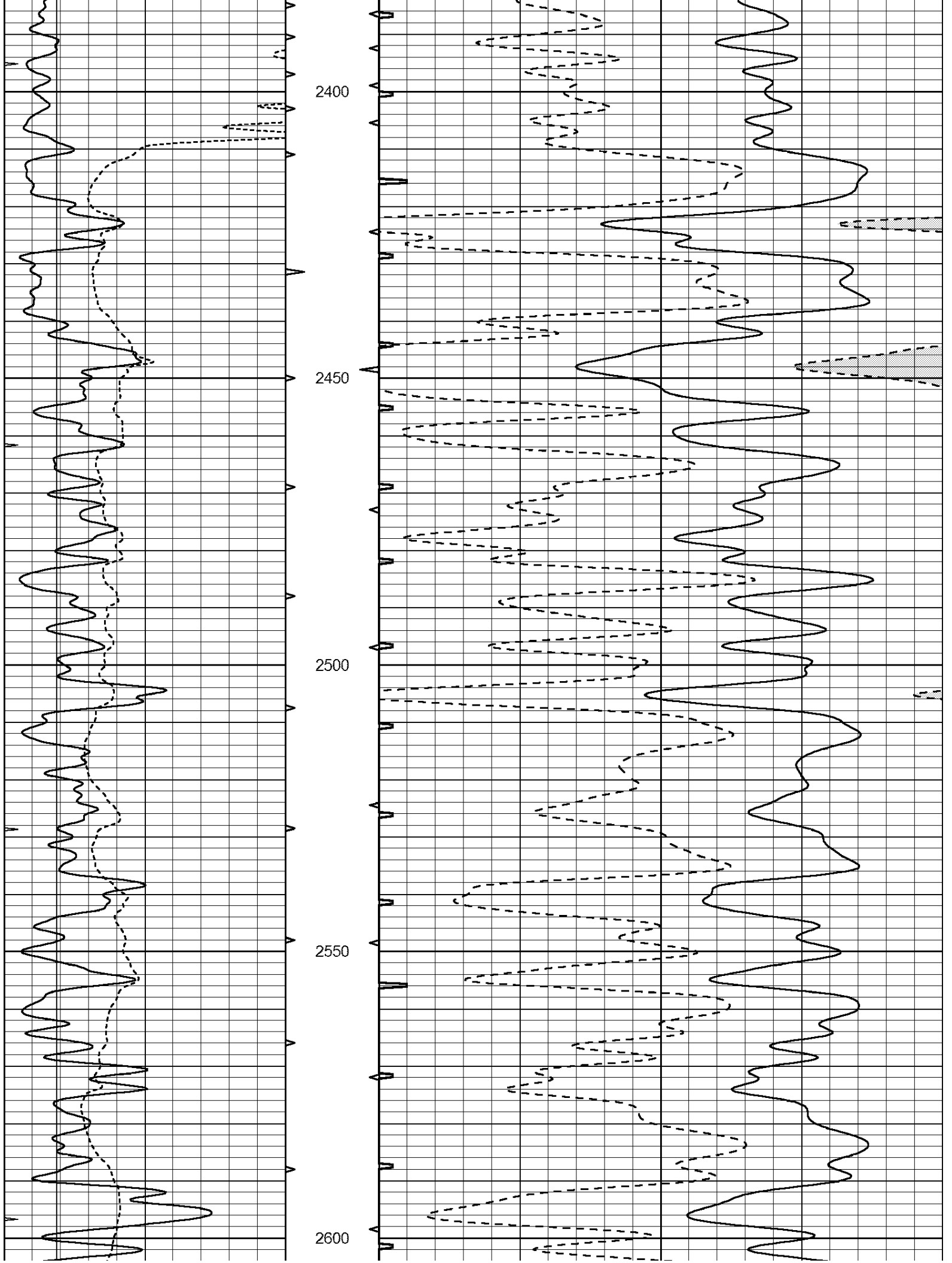
1850

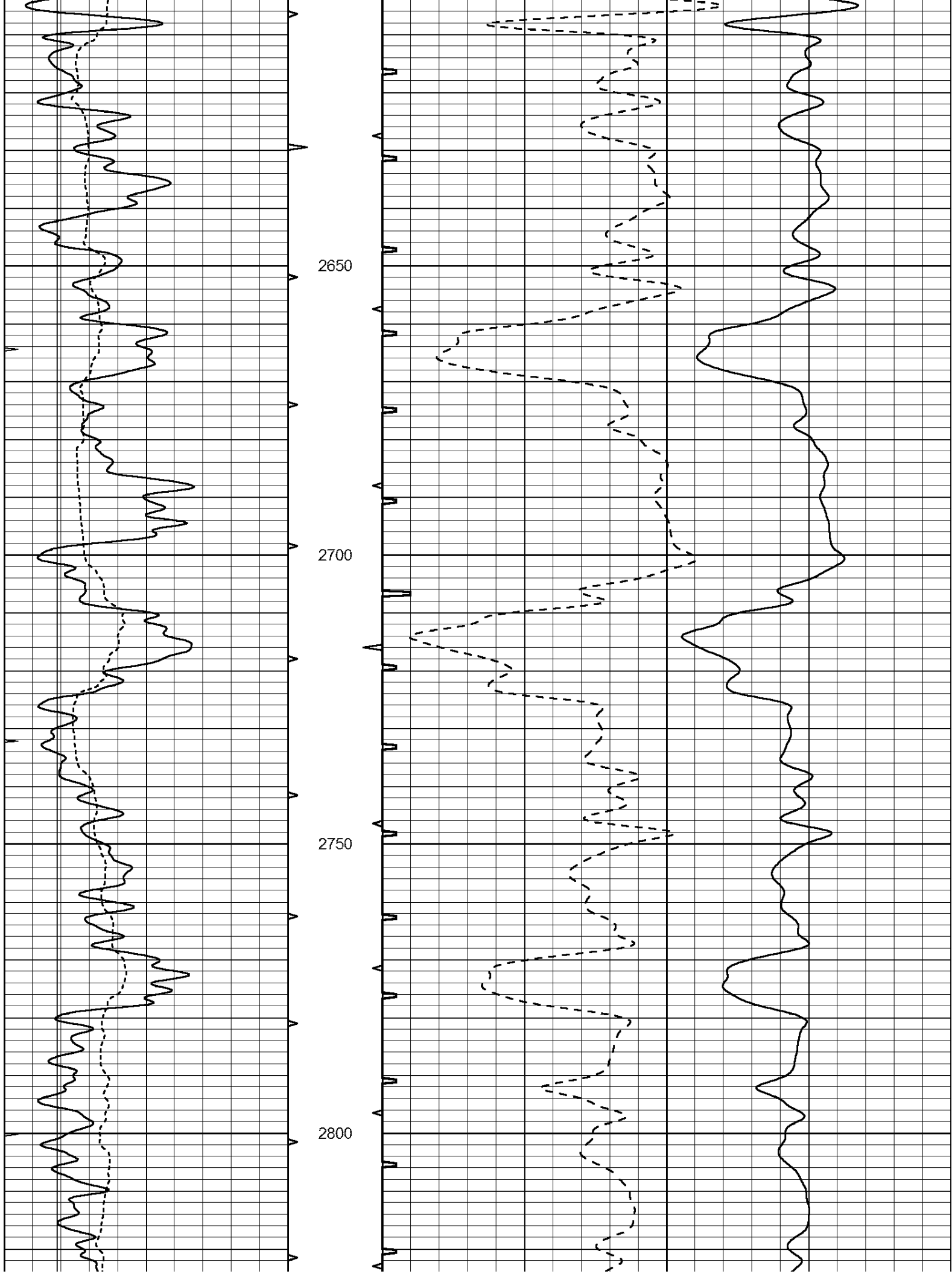
1900

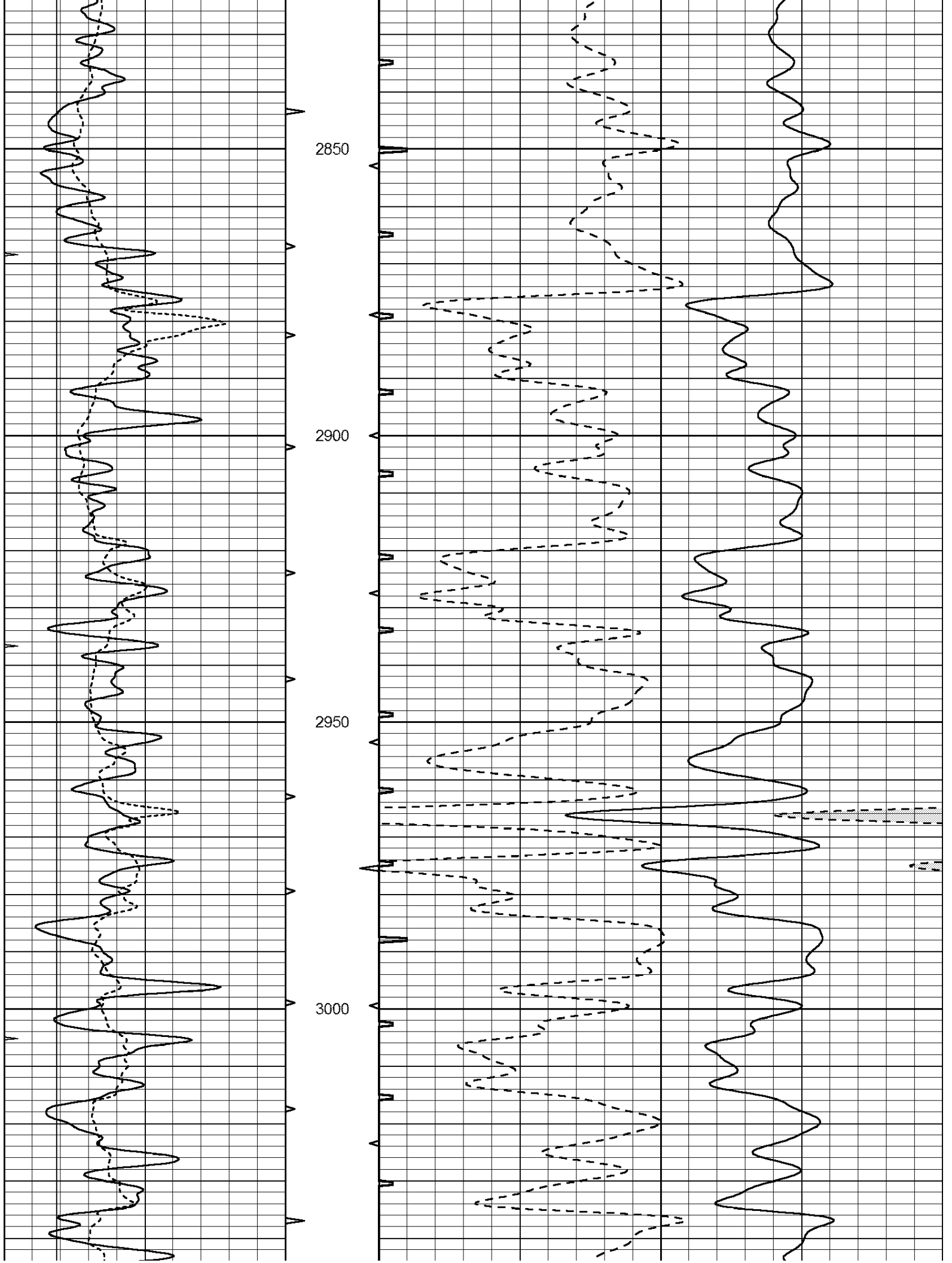


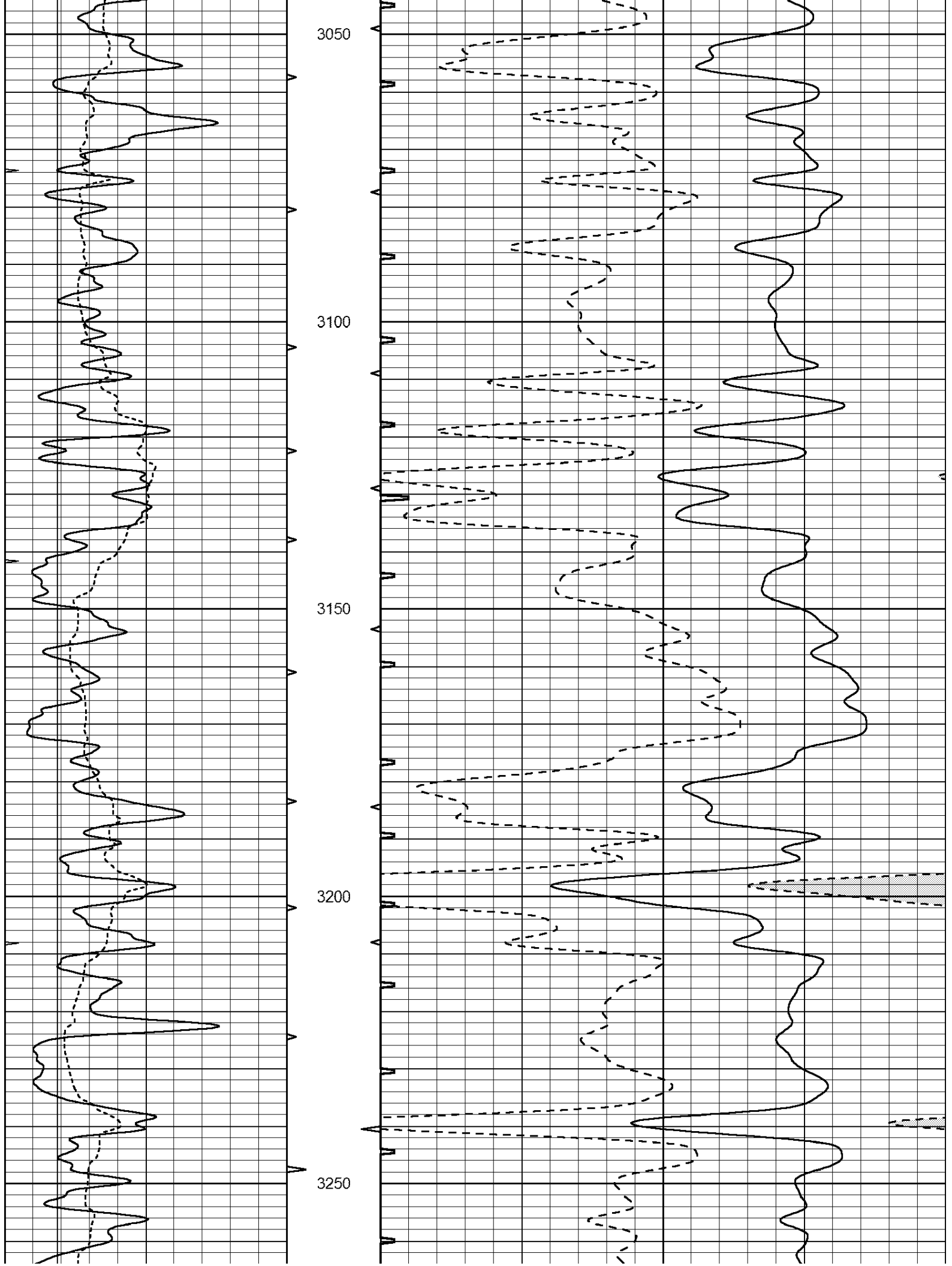


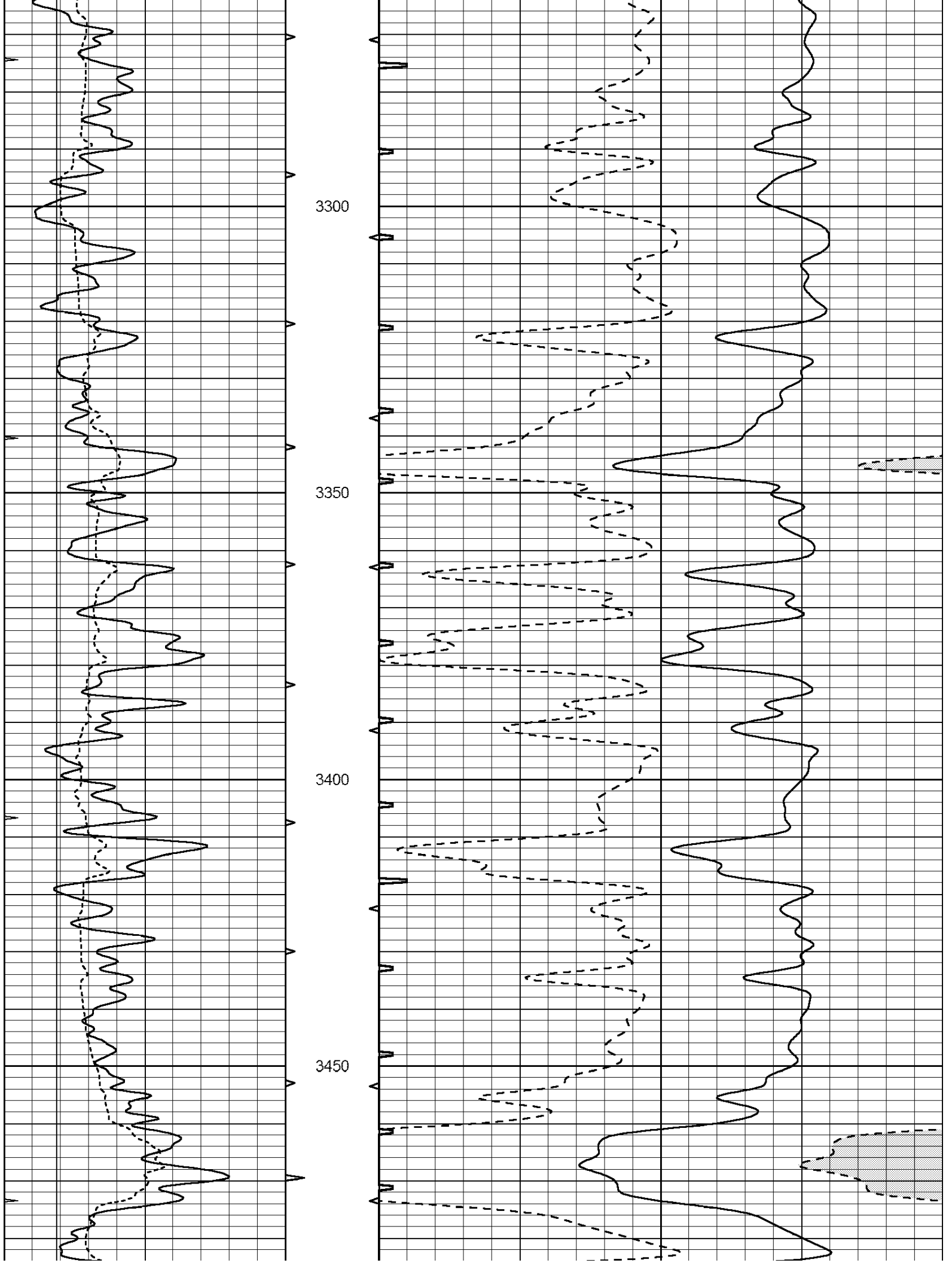


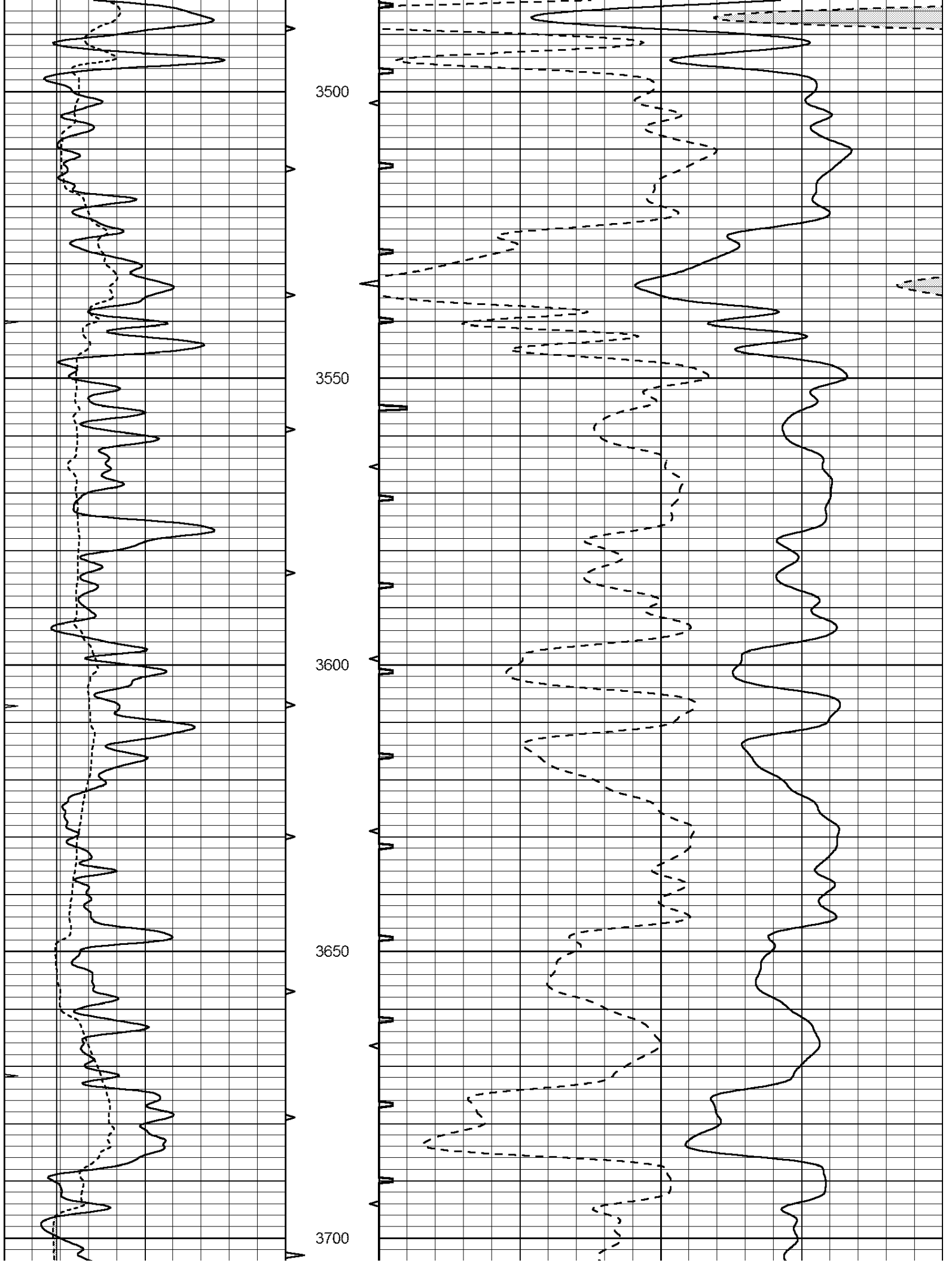


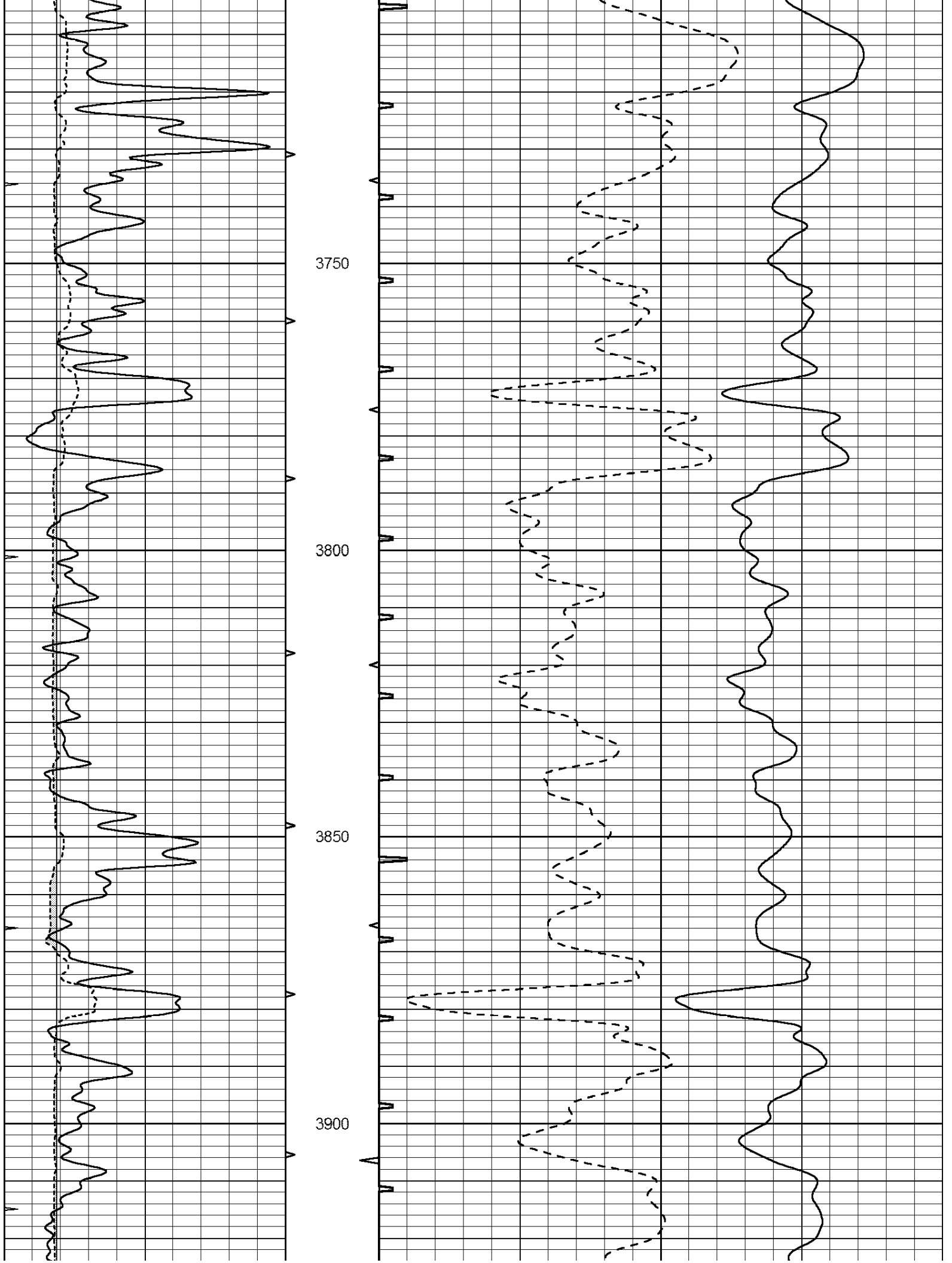


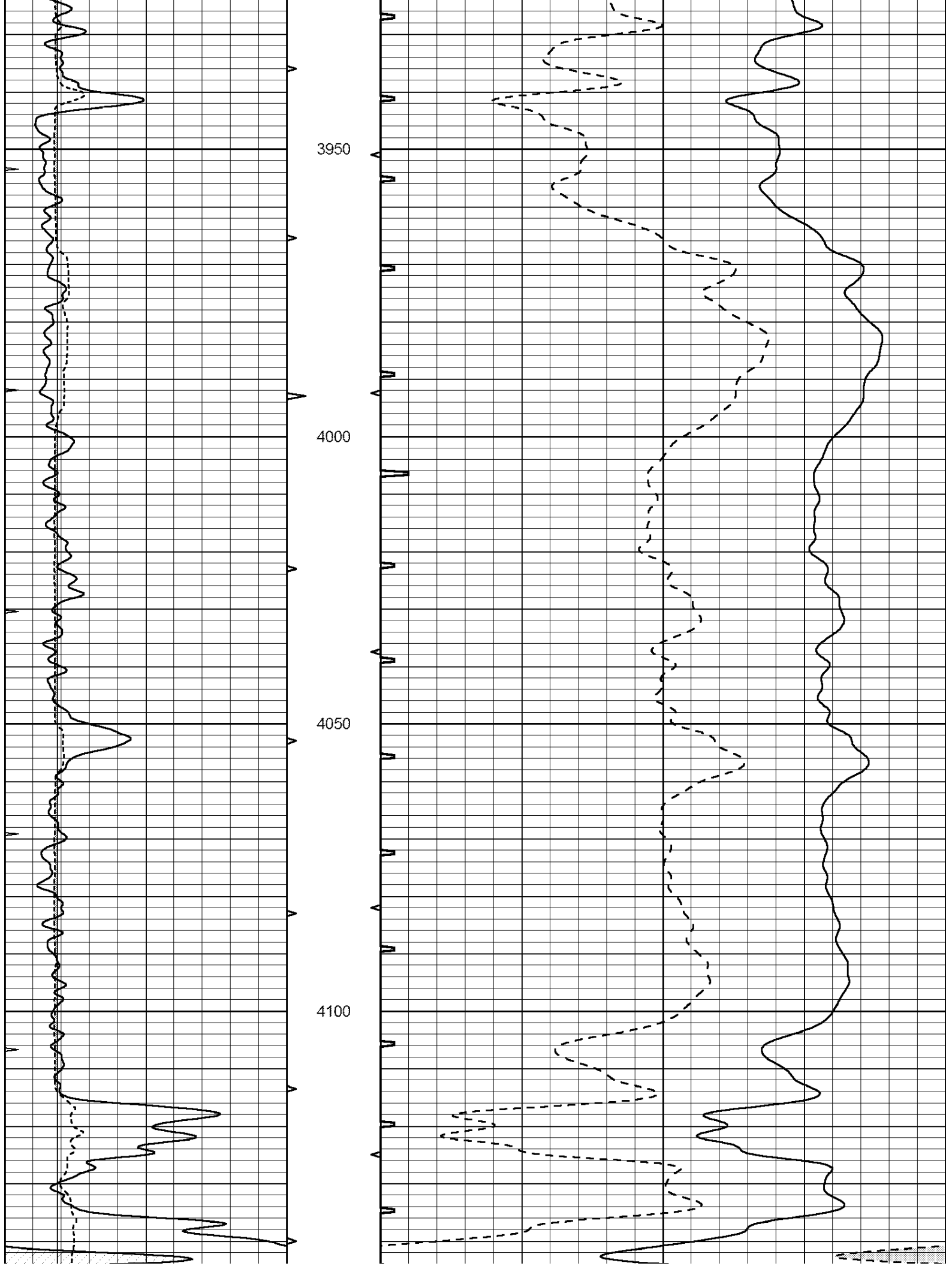


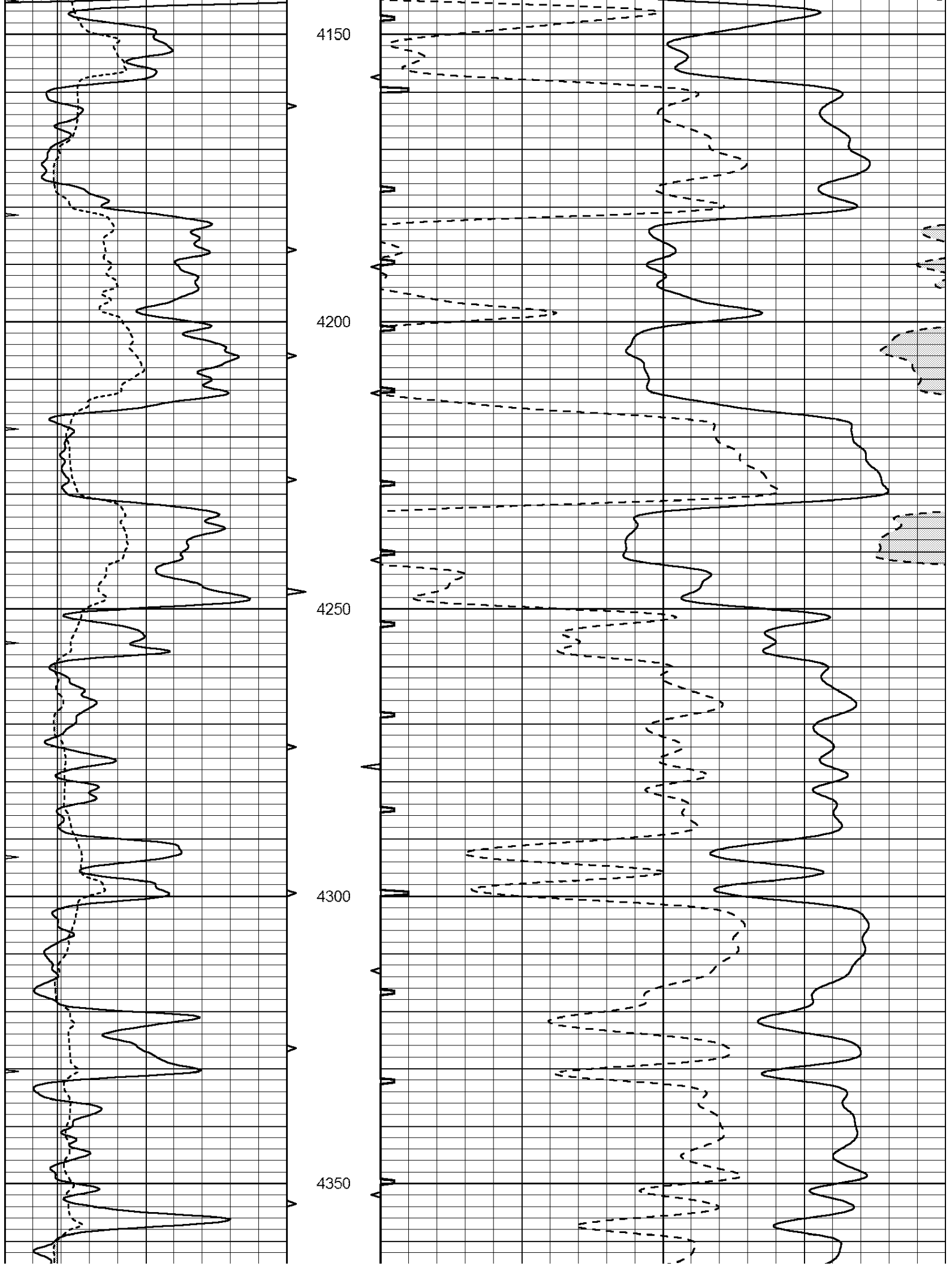


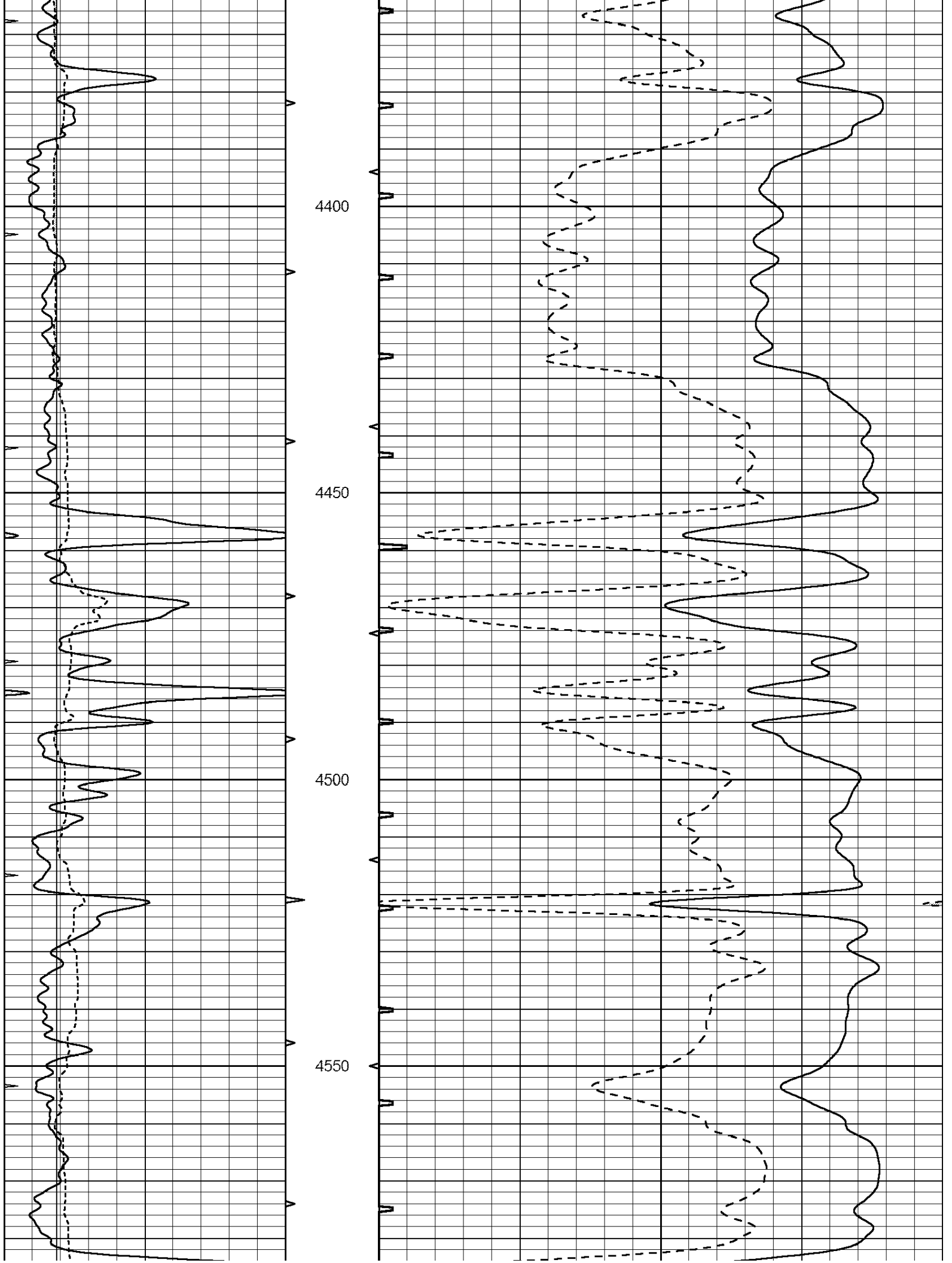


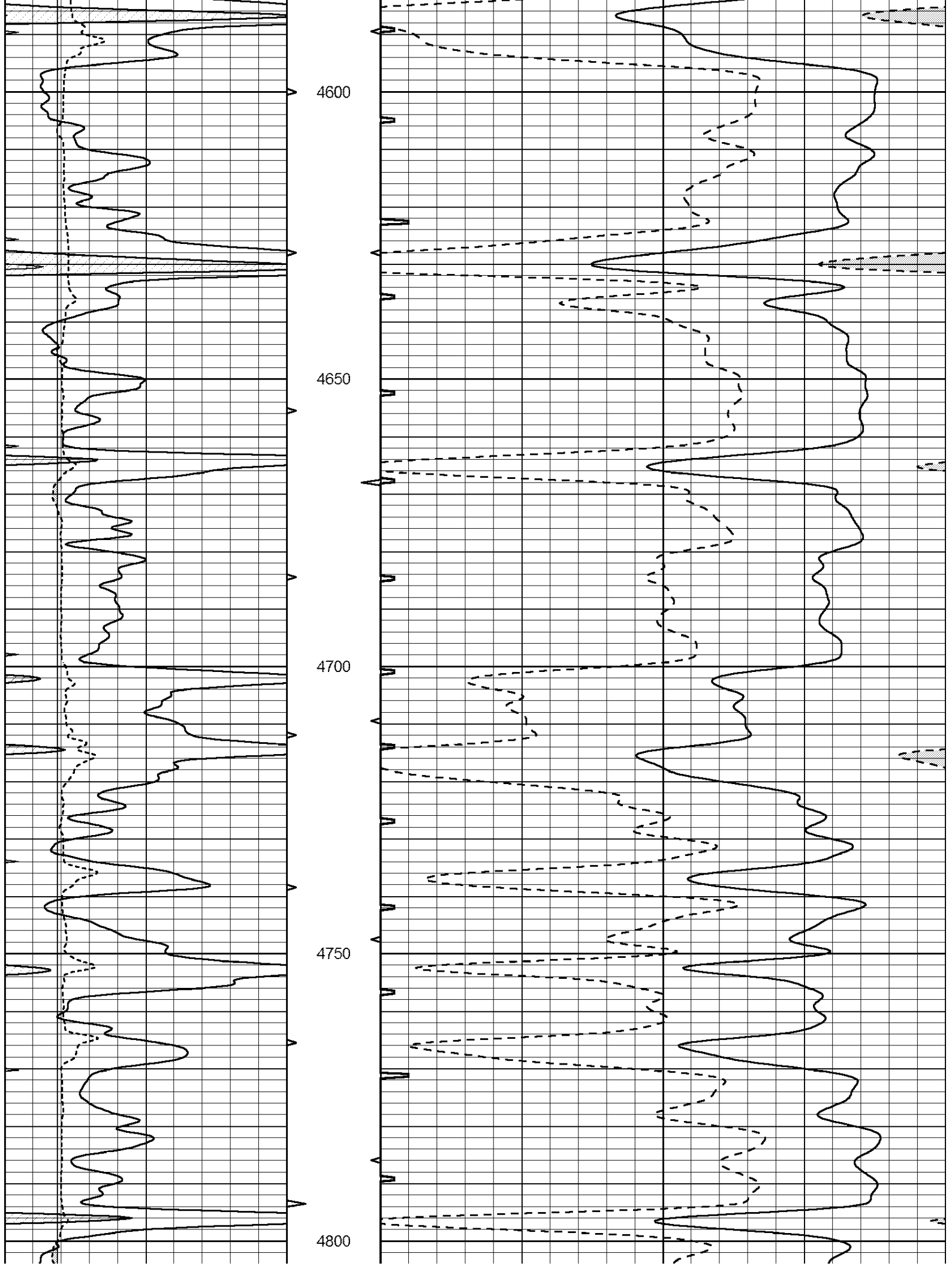


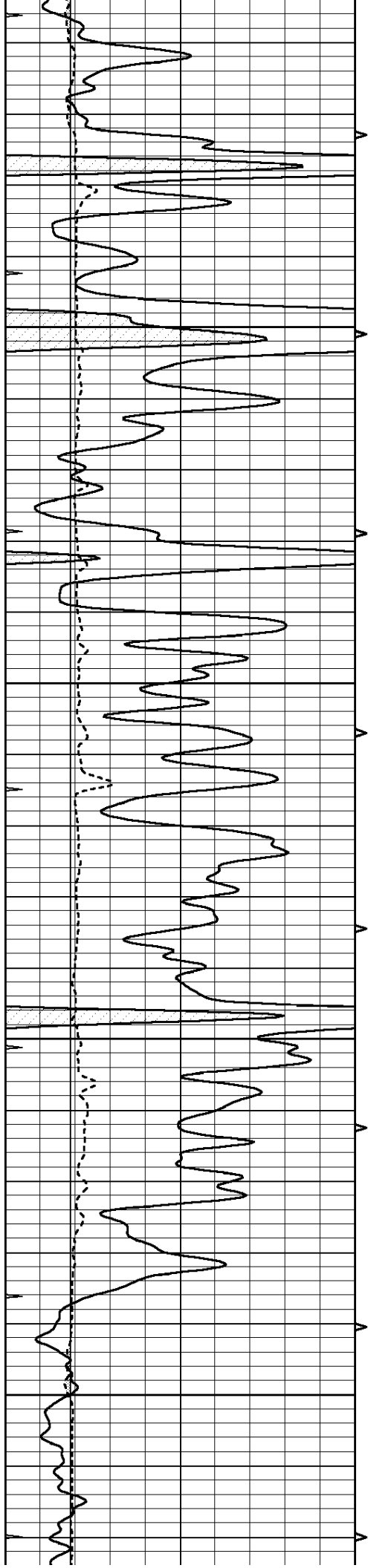










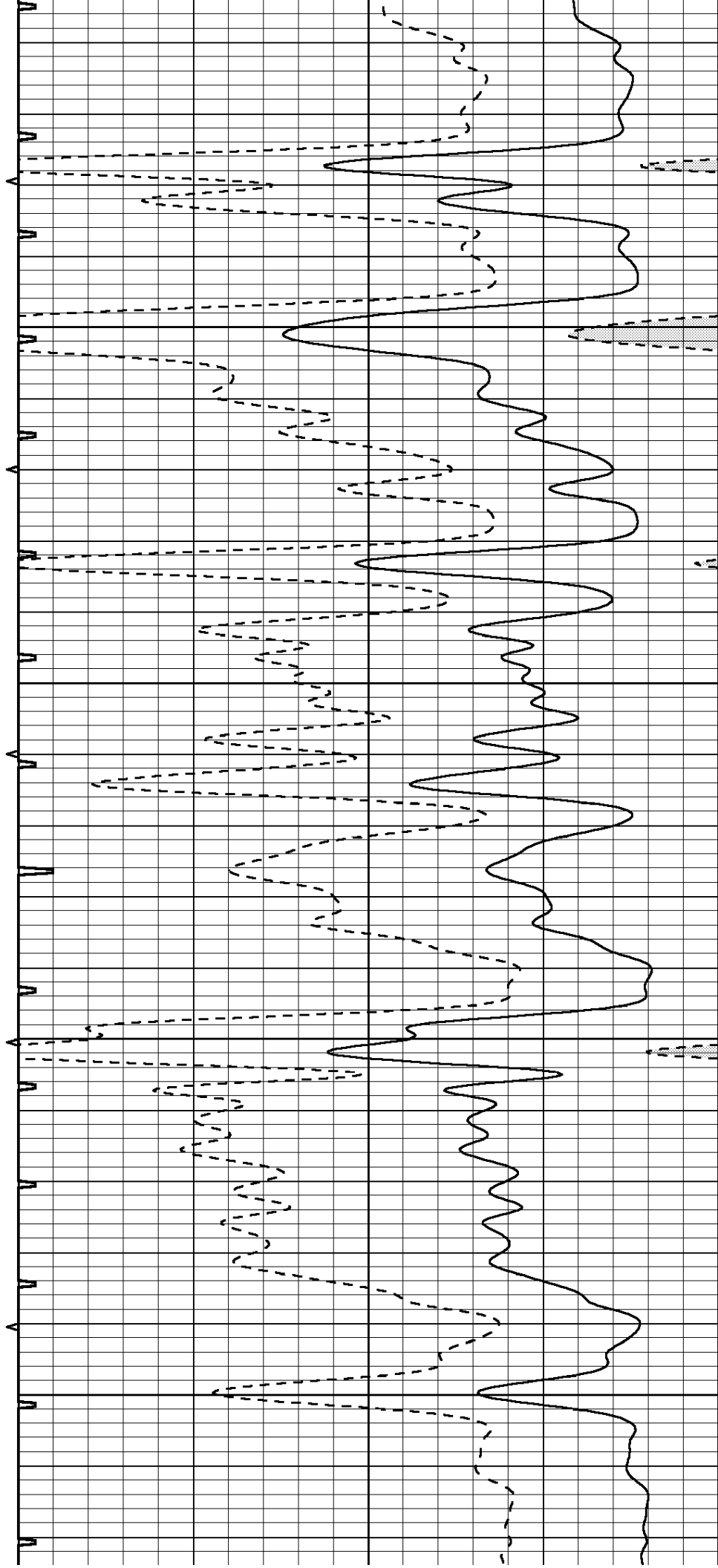


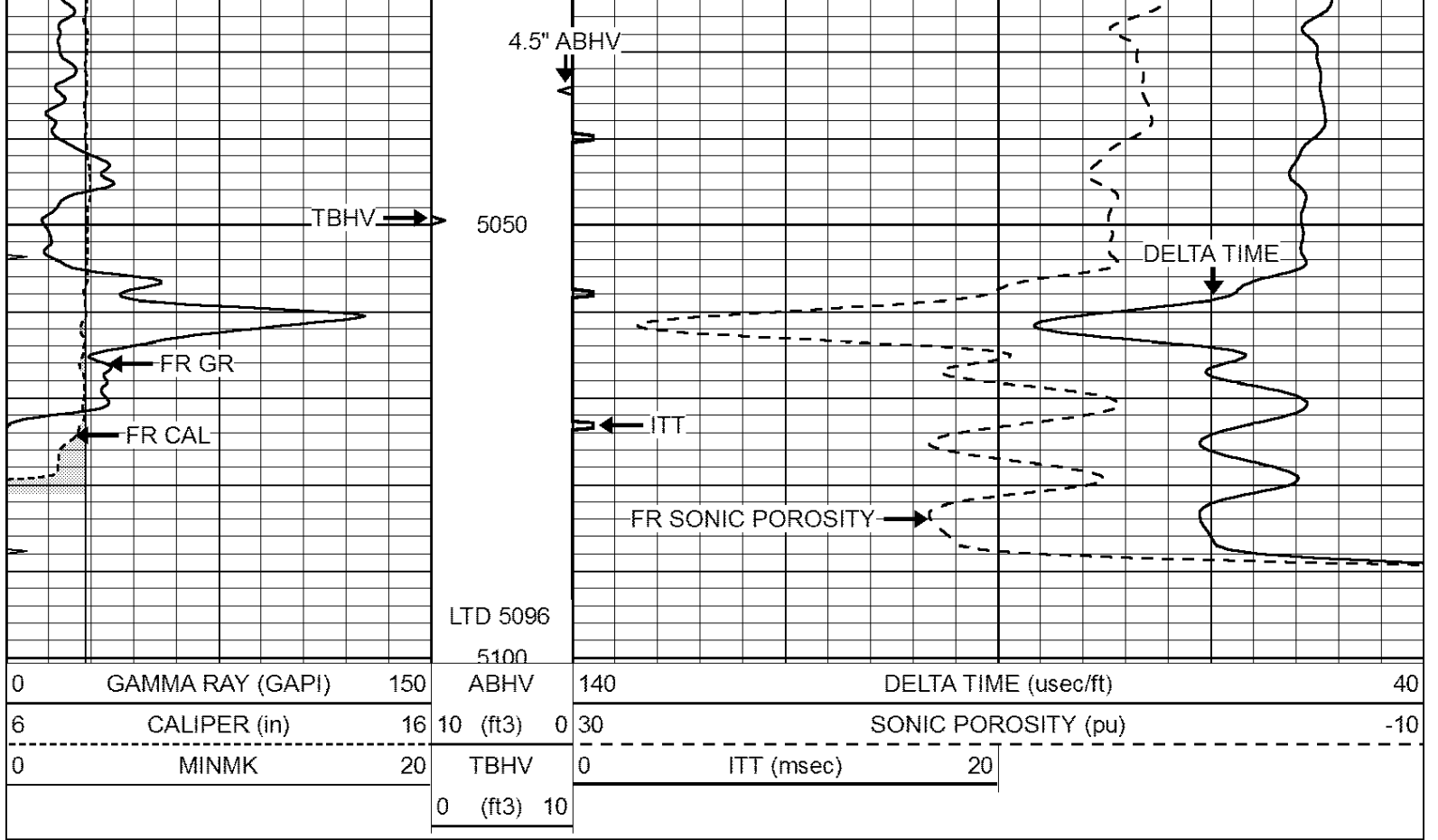
4850

4900

4950

5000



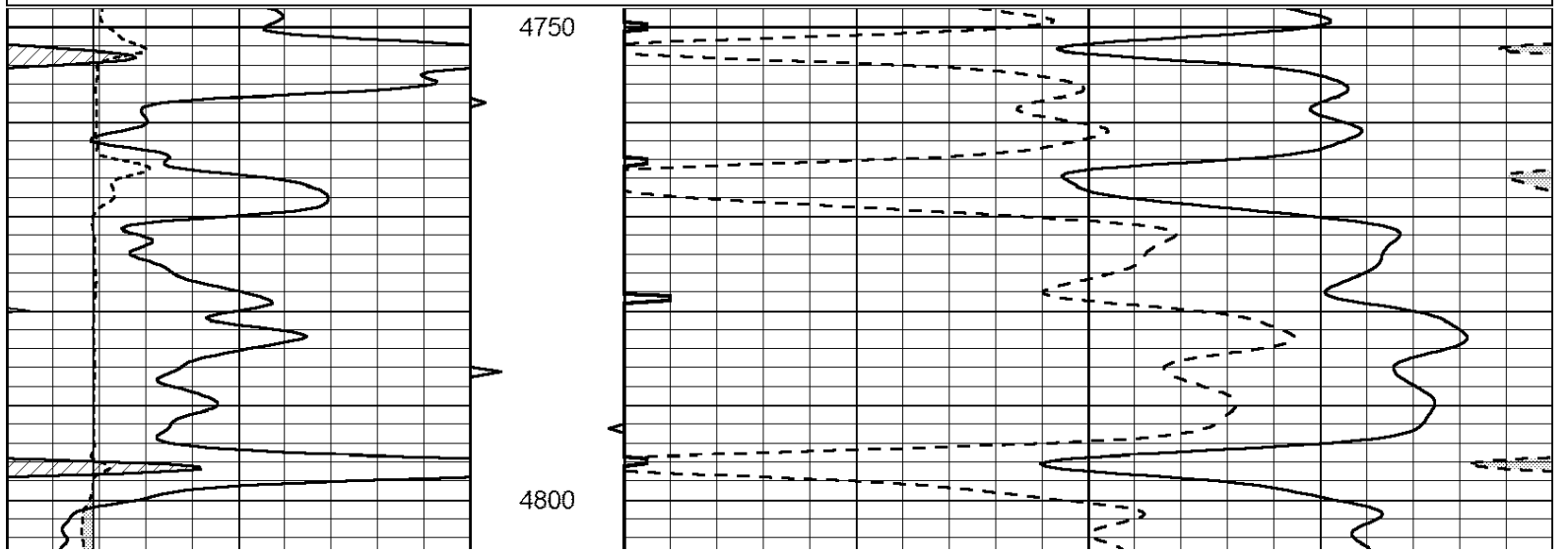


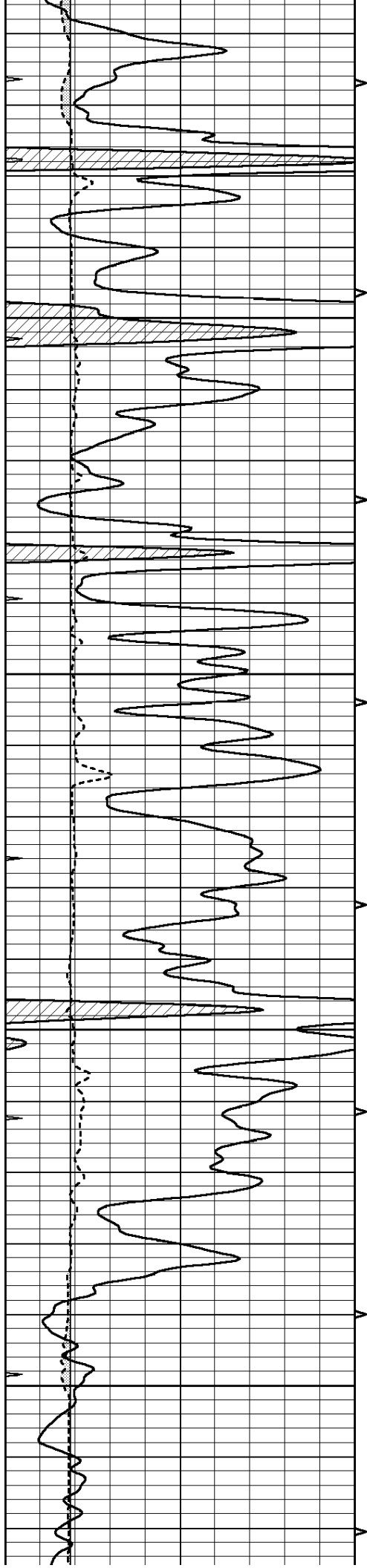
SUPERIOR
Hays,
Kansas

REPEAT SECTION

Database File: 408775pe.db
 Dataset Pathname: pass5.1
 Presentation Format: slt
 Dataset Creation: Wed May 23 05:10:03 2012 by Calc Open-Cased 110302
 Charted by: Depth in Feet scaled 1:240

0	GAMMA RAY (GAPI)	150	ABHV	140	DELTA TIME (usec/ft)	40
6	CALIPER (in)	16	10 (ft3) 0	30	SONIC POROSITY (pu)	-10
0	MINMK	20	TBHV	0	ITT (msec)	20
			0 (ft3) 10			





4850

4900

4950

5000

