



**SUPERIOR**  
Hays,  
Kansas

**MICRO**  
LOG

Company VINCENT OIL CORPORATION  
Well SCHNEWEIS #1-14  
Field WILDCAT  
County FORD  
State KANSAS

Company VINCENT OIL CORPORATION  
Well SCHNEWEIS #1-14  
Field WILDCAT  
County FORD State KANSAS

Location: API # : 15-057-20804-0000  
2525' FSL & 390' FEL  
SEC 14 TWP 27S RGE 24W  
Permanent Datum GROUND LEVEL Elevation 2452  
Log Measured From KELLY BUSHING 8' A.G.L.  
Drilling Measured From KELLY BUSHING  
Other Services  
CDL/CNL/PE  
DIL/SONIC  
Elevation  
K.B. 2460  
D.F. 2458  
G.L. 2452

Date	5/23/12		
Run Number	TWO		
Depth Driller	5100		
Depth Logger	5096		
Bottom Logged Interval	5074		
Top Log Interval	3900		
Casing Driller	8 5/8"@494'		
Casing Logger	494		
Bit Size	7 7/8"		
Type Fluid in Hole	CHEMICAL MUD	CHLORIDES 5,600 PPM	
Density / Viscosity	9.2/45		
pH / Fluid Loss	9.5/9.6		
Source of Sample	FLOWLINE		
Rm @ Meas. Temp	.800@80F		
Rmt @ Meas. Temp	.600@80F		
Rmc @ Meas. Temp	.960@80F		
Source of Rmf / Rmc	MEASUREMENT		
Rm @ BHT	.508@126F		
Time Circulation Stopped	5.5 HOURS		
Time Logger on Bottom	2:15 A.M.		
Maximum Recorded Temperature	126F		
Equipment Number	4010		
Location	HAYS, KANSAS		
Recorded By	JEFF LUEBBERS		
Witnessed By	BRAD RINE		

<<< Fold Here >>>

All interpretations are opinions based on inferences from electrical or other measurements and we cannot and do not guarantee the accuracy or correctness of any interpretation, and we shall not, except in the case of gross or willful negligence on our part, be liable or responsible for any loss, costs, damages, or expenses incurred or sustained by anyone resulting from any interpretation made by any of our officers, agents or employees. These interpretations are also subject to our general terms and conditions set out in our current Price Schedule.

Comments

THANK YOU FOR USING SUPERIOR WELL SERVICE HAYS, KANSAS (785) 628-6395  
DIRECTIONS  
FORD, KS. & HWY 400, 8W. ON "SADDLE RD." TO "RD. 117", 3N. ON BLKTOP, W. INTO

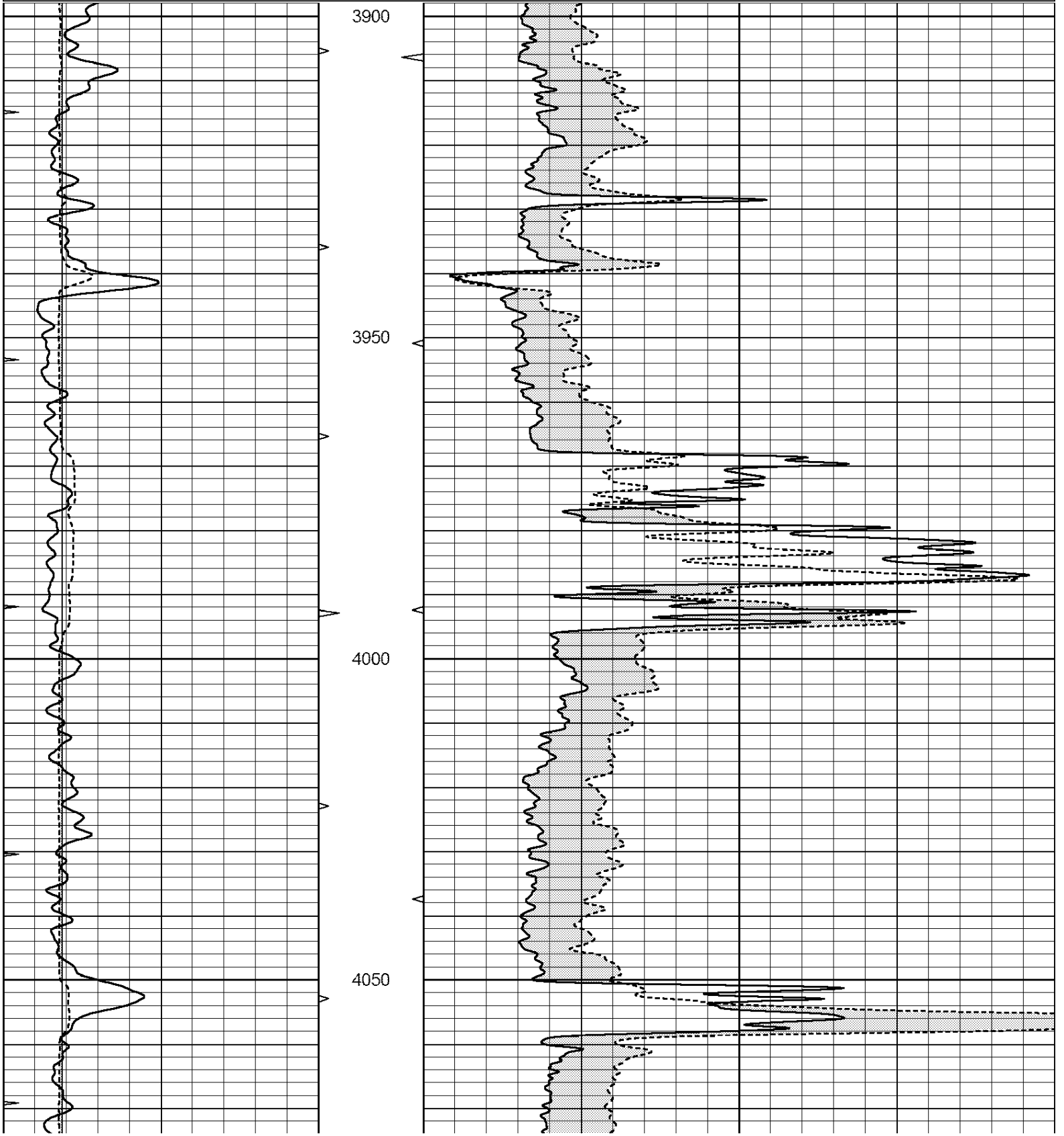


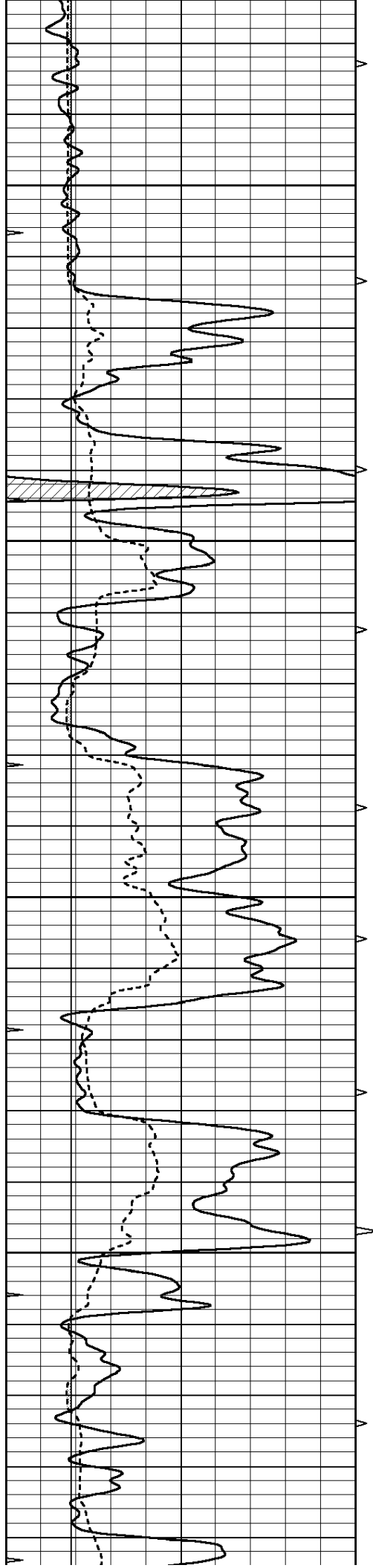
SUPERIOR  
Hays,  
Kansas

**MAIN SECTION**

Database File: 408775pe.db  
 Dataset Pathname: pass6.6  
 Presentation Format: micro  
 Dataset Creation: Wed May 23 06:28:17 2012  
 Charted by: Depth in Feet scaled 1:240

0	GAMMA RAY (GAPI)	150	ABHV	0	MEL1.5 (Ohm-m)	40
6	CALIPER (in)	16	10 (ft3)	0	MEL2.0 (Ohm-m)	40
0	MINMK	20	TBHV			
			0 (ft3)	10		



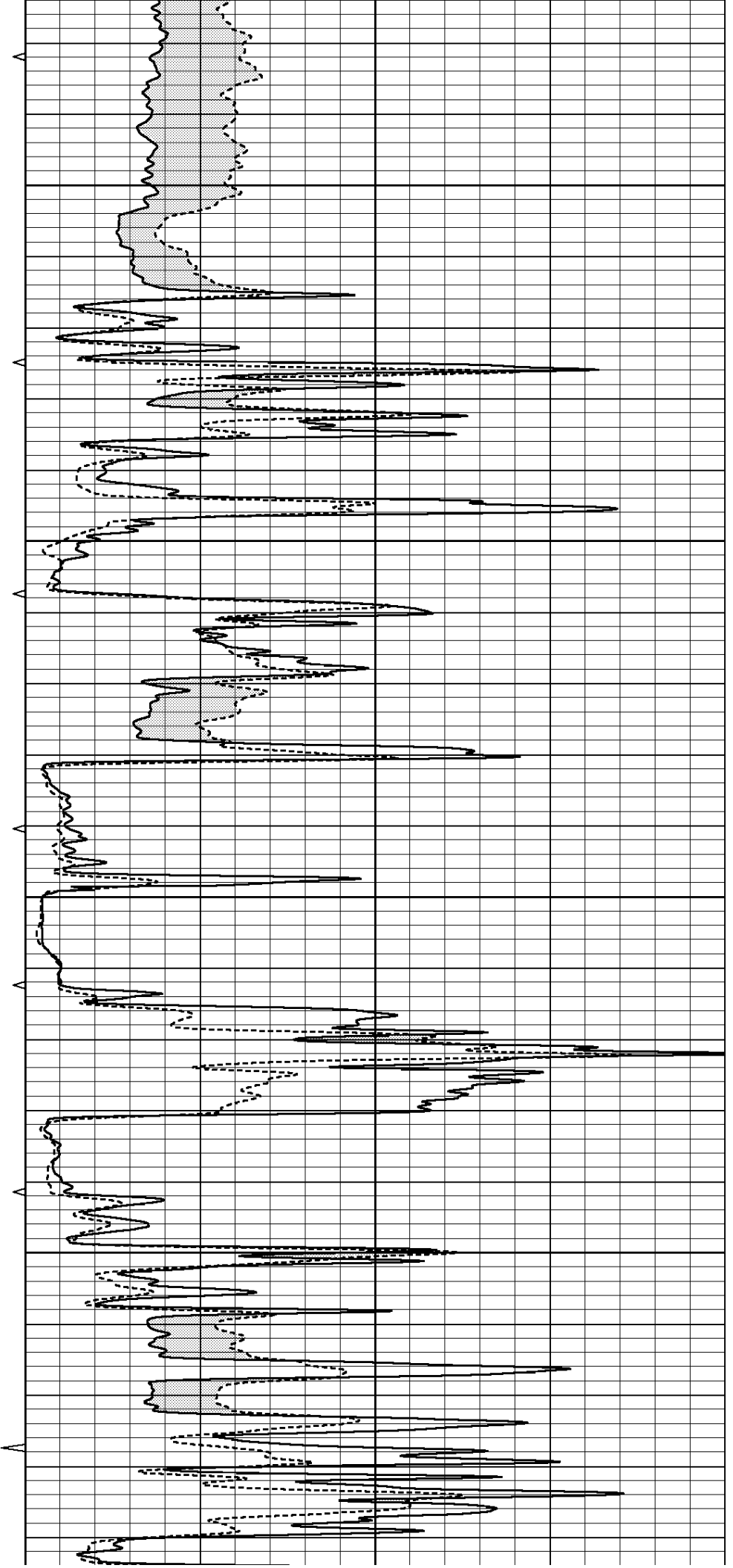


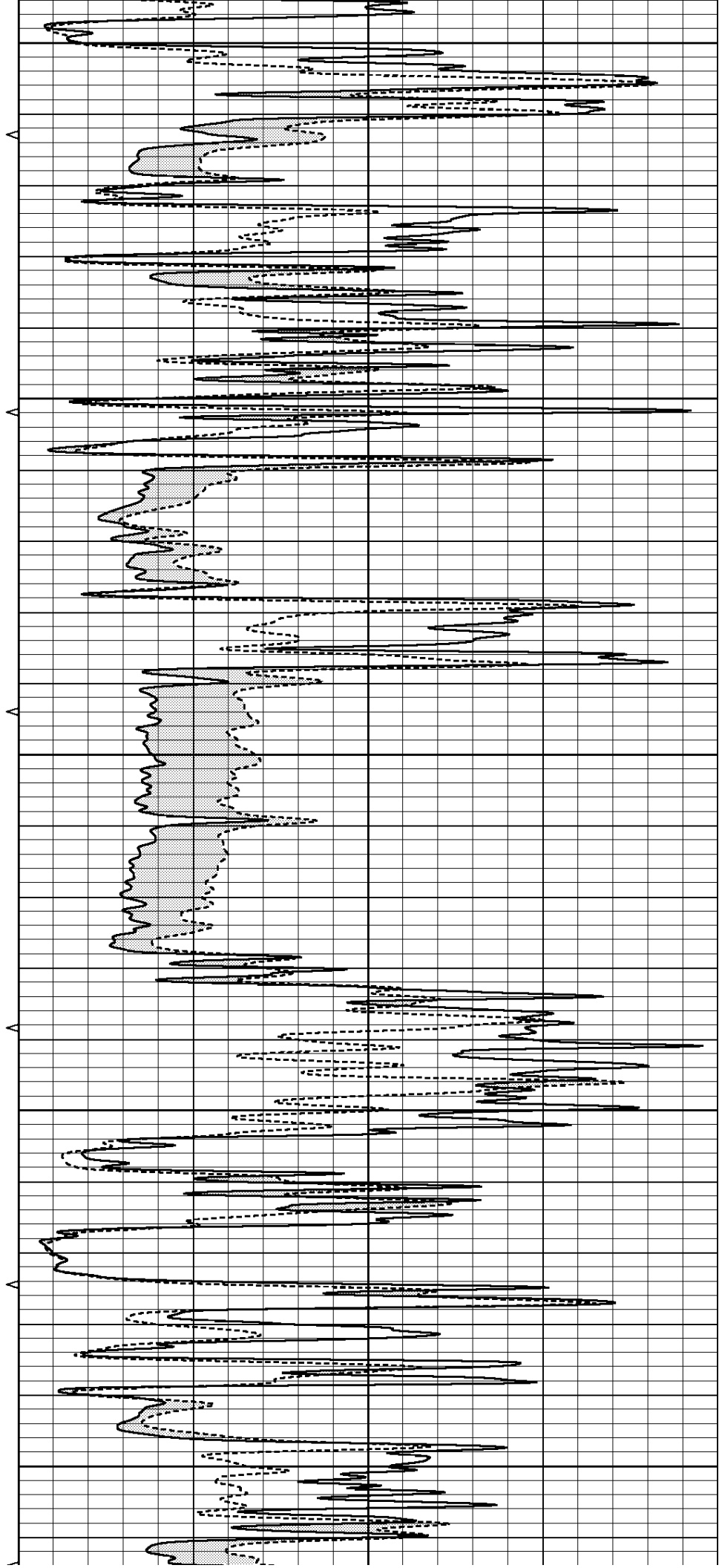
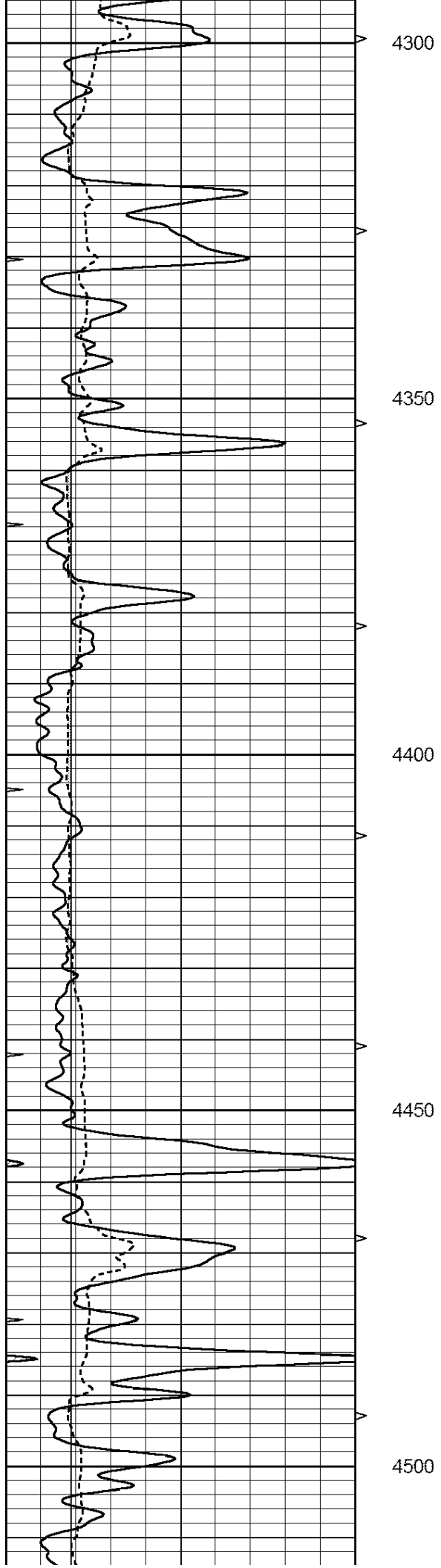
4100

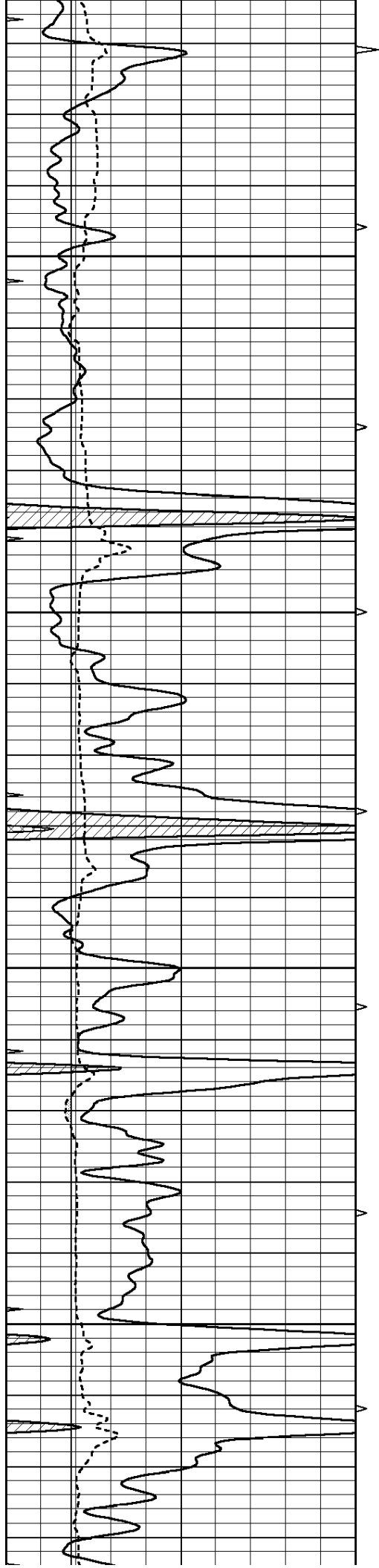
4150

4200

4250





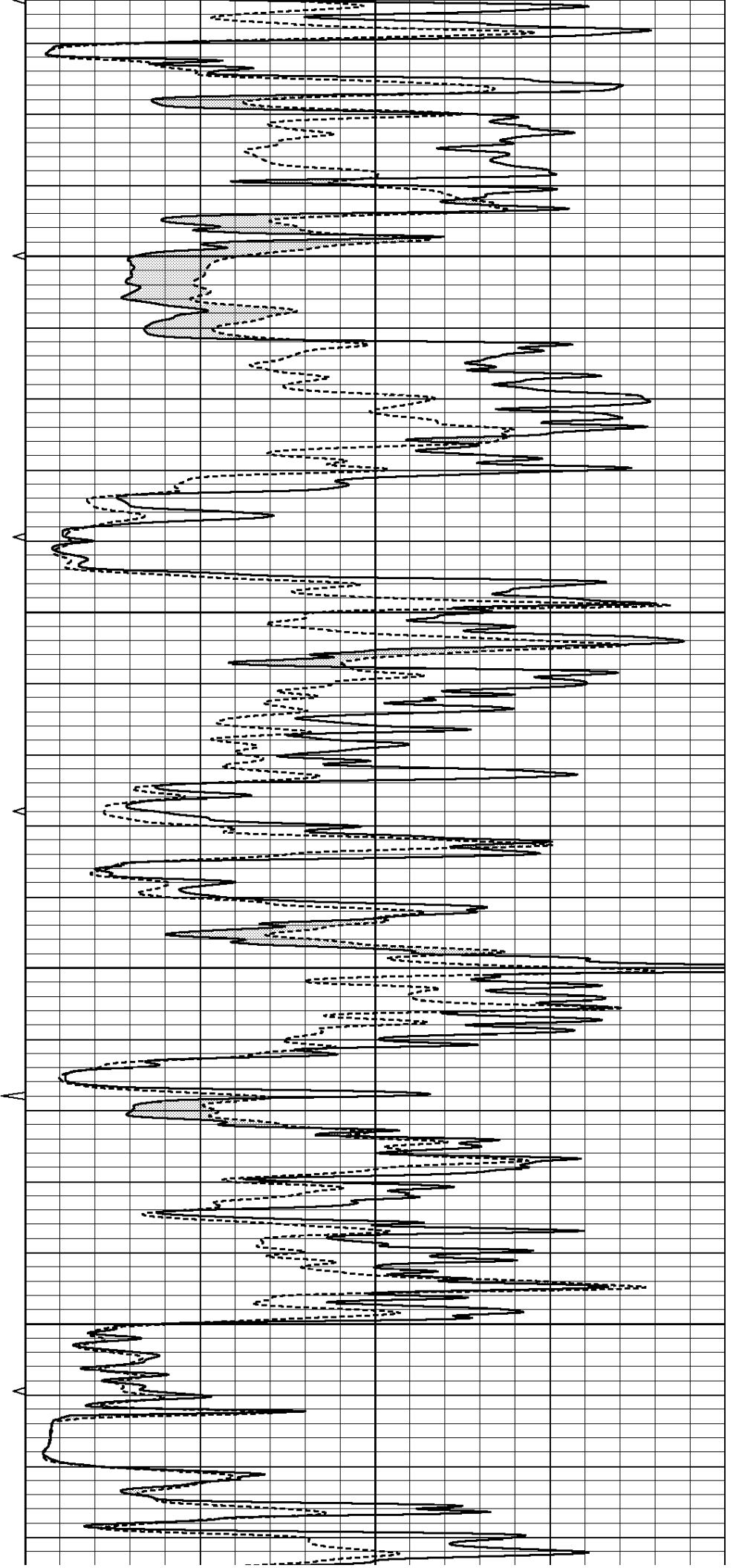


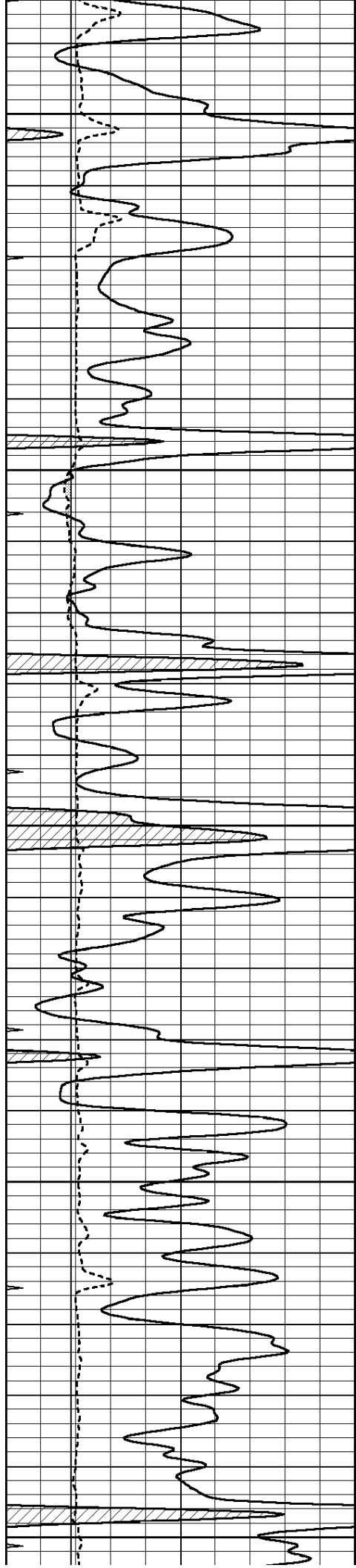
4550

4600

4650

4700





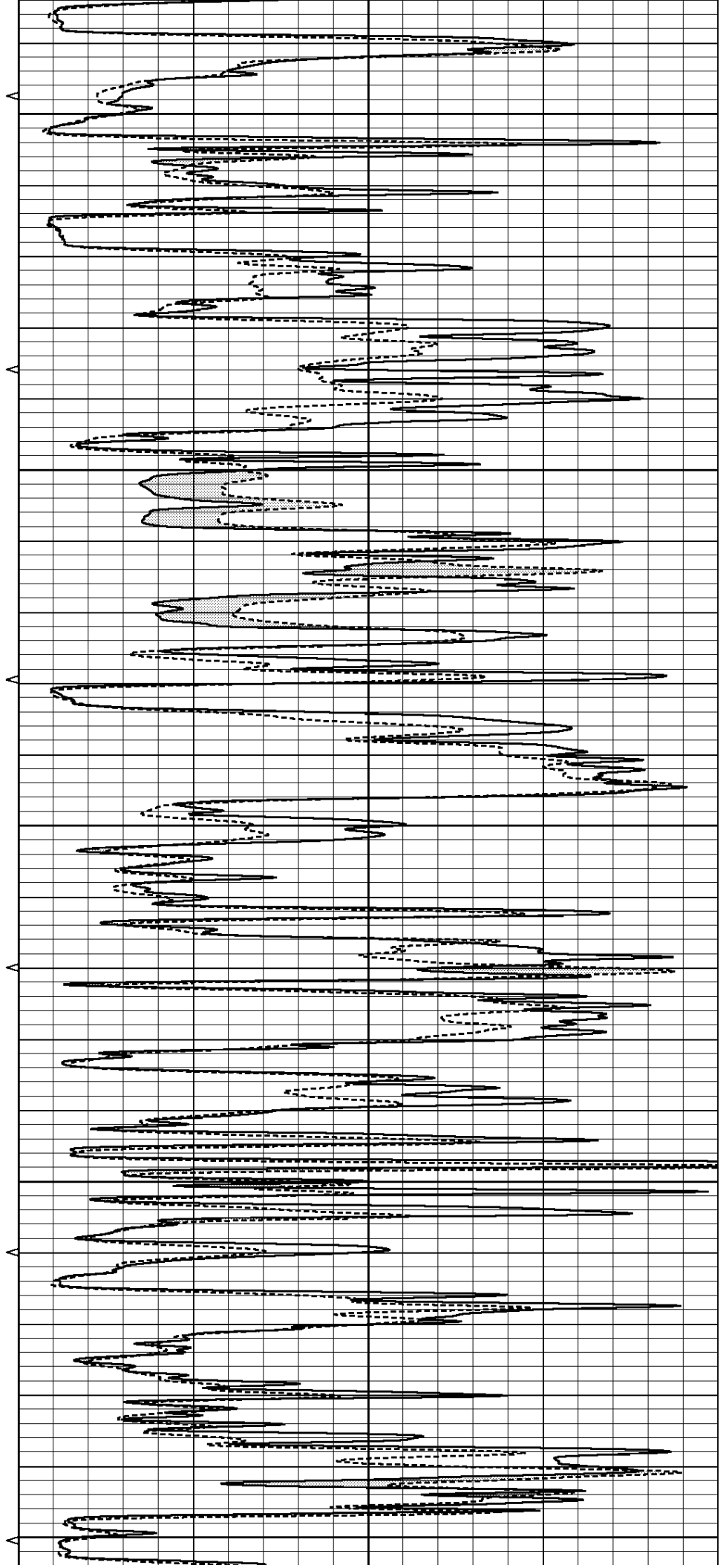
4750

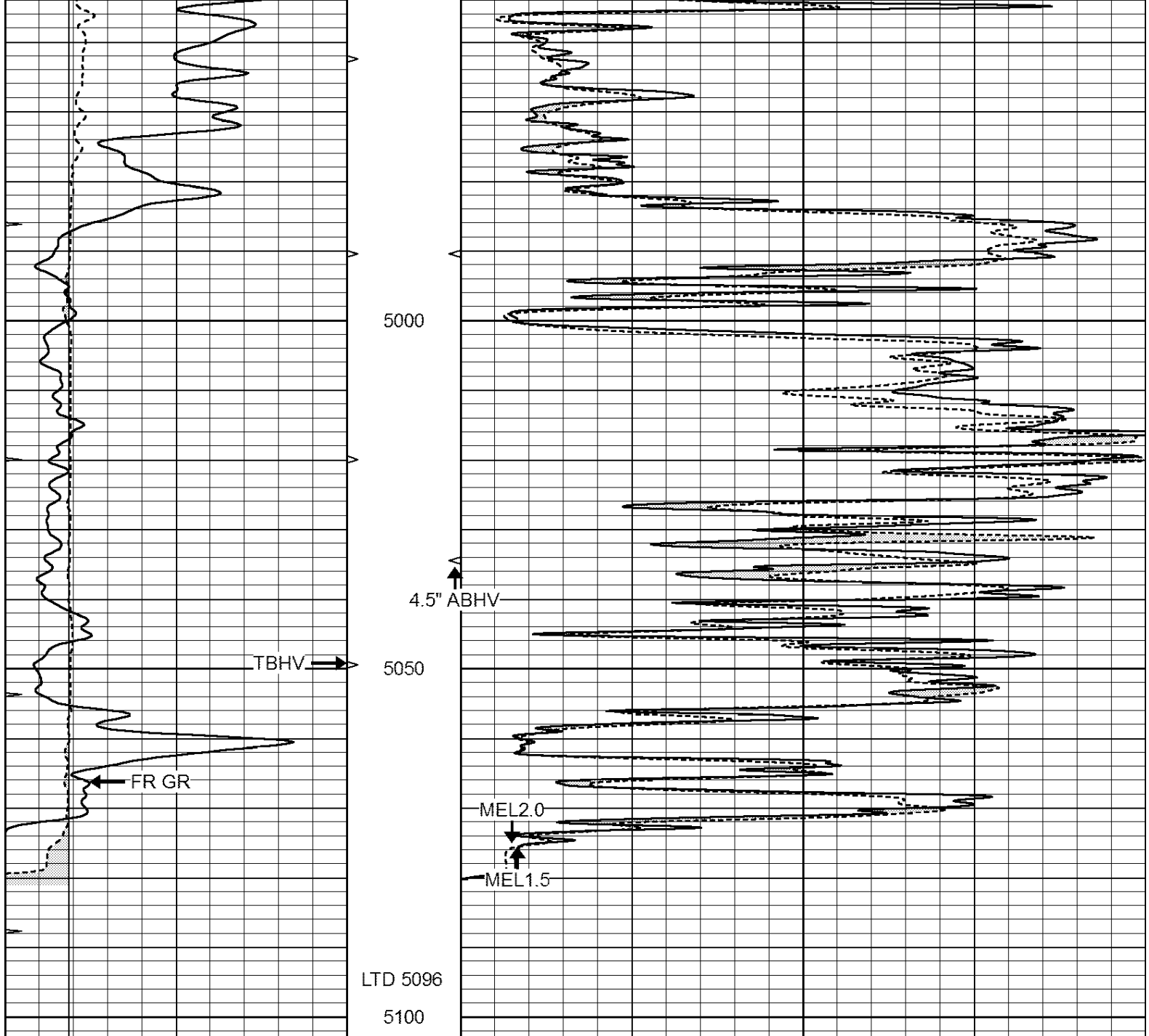
4800

4850

4900

4950





0	GAMMA RAY (GAPI)	150	ABHV	0	MEL1.5 (Ohm-m)	40
6	CALIPER (in)	16	10 (ft3)	0	MEL2.0 (Ohm-m)	40
0	MINMK	20	TBHV			
			0 (ft3)	10		



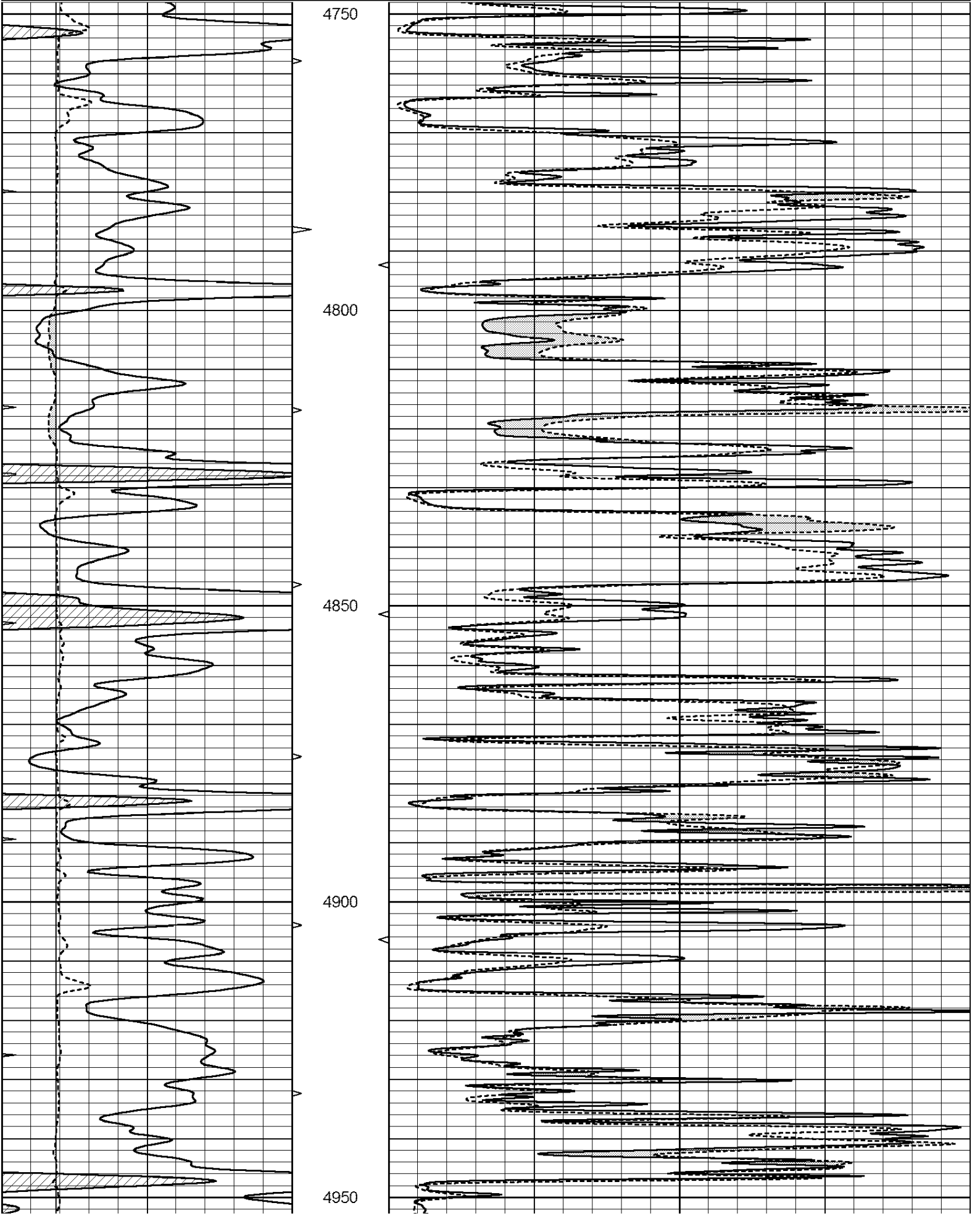
SUPERIOR  
Hays,  
Kansas

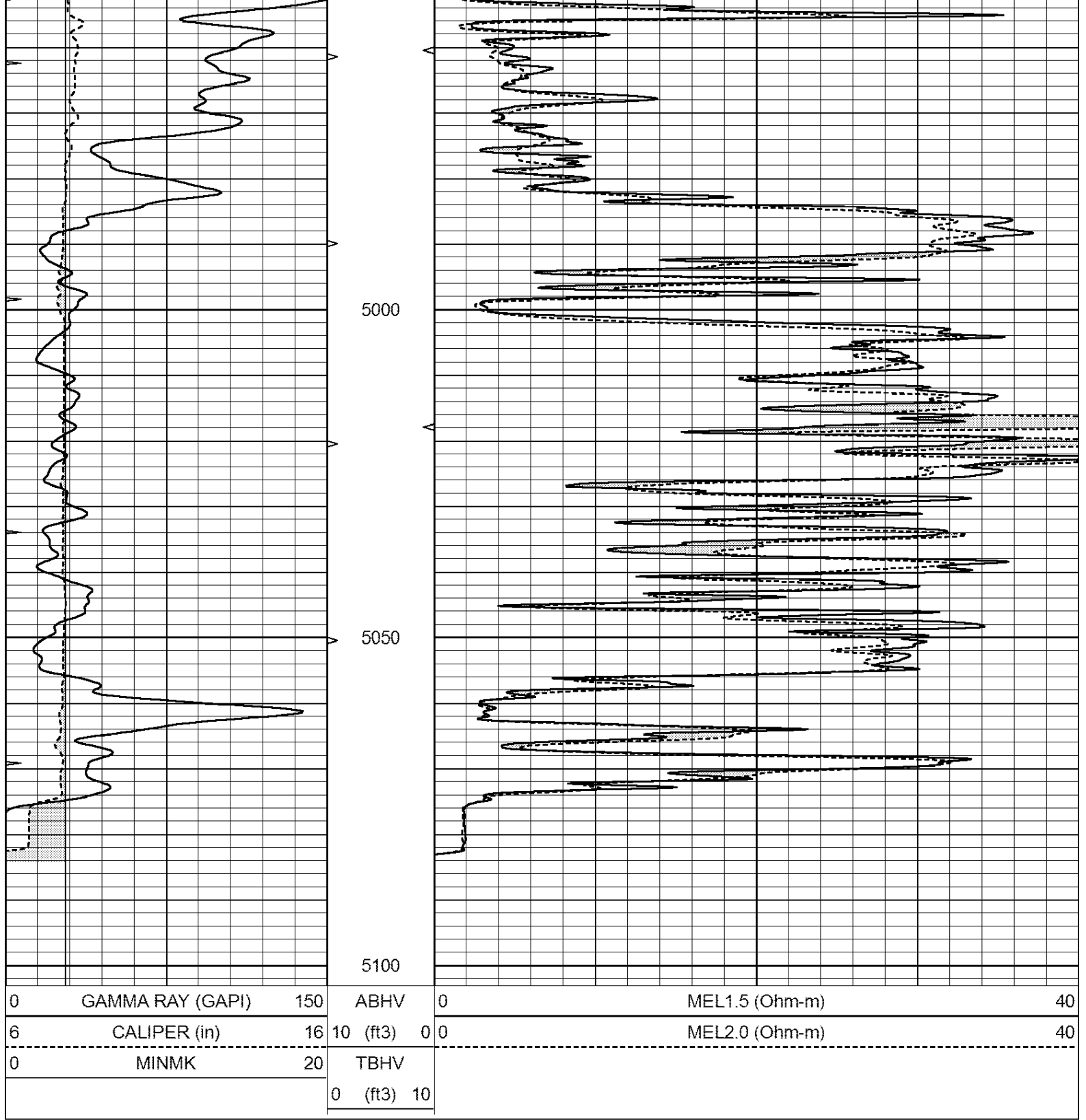
# REPEAT SECTION

Database File: 408775pe.db  
 Dataset Pathname: pass5.1  
 Presentation Format: micro  
 Dataset Creation: Wed May 23 05:10:03 2012 by Calc Open-Cased 110302  
 Charted by: Depth in Feet scaled 1:240

0	GAMMA RAY (GAPI)	150	ABHV	0	MEL1.5 (Ohm-m)	40
---	------------------	-----	------	---	----------------	----

6	CALIPER (in)	16	10 (ft3)	0 0	MEL2.0 (Ohm-m)	40
0	MINMK	20	TBHV			
			0 (ft3) 10			





Calibration Report

Database File: 408775pe.db  
 Dataset Pathname: pass6.4  
 Dataset Creation: Wed May 23 05:53:44 2012 by Calc Open-Cased 110302

MICRO Calibration Report

Serial Number: 2  
 Tool Model: PROBE  
 Performed: Wed May 23 04:55:16 2012

Caliper Calibration: Gain=4.105      Offset=3.360

References	Low Cal 8.000	High Cal 15.000
Readings	1.130	2.835
1.5" Calibration:	Gain=25.000	Offset=-0.200
References	Low Cal 0.000	High Cal 20.000
Readings	0.065	1.210
2" Calibration:	Gain=45.000	Offset=-0.600
References	Low Cal 0.000	High Cal 20.000
Readings	0.012	1.043
Gamma Ray Calibration Report		
Serial Number:	GR4	
Tool Model:	OPEN	
Performed:	Wed May 23 04:55:26 2012	
Calibrator Value:	200.0	GAPI
Background Reading:	0.0	cps
Calibrator Reading:	189.0	cps
Sensitivity:	1.5000	GAPI/cps