



**SUPERIOR**  
Hays,  
Kansas

**COMPENSATED  
DENSITY / NEUTRON  
PE LOG**

Company VINCENT OIL CORPORATION  
Well SCHNEWEIS #1-14  
Field WILDCAT  
County FORD  
State KANSAS

Company VINCENT OIL CORPORATION  
Well SCHNEWEIS #1-14  
Field WILDCAT  
County FORD State KANSAS

Location: API # : 15-057-20804-0000  
2525' FSL & 390' FEL  
SEC 14 TWP 27S RGE 24W  
Permanent Datum GROUND LEVEL Elevation 2452  
Log Measured From KELLY BUSHING 8' A.G.L.  
Drilling Measured From KELLY BUSHING  
Other Services  
DIL/MEL  
SONIC  
Elevation  
K.B. 2460  
D.F. 2458  
G.L. 2452

Date	5/23/12		
Run Number	ONE		
Depth Driller	5100		
Depth Logger	5096		
Bottom Logged Interval	5072		
Top Log Interval	3900		
Casing Driller	8 5/8"@494'		
Casing Logger	494		
Bit Size	7 7/8"		
Type Fluid in Hole	CHEMICAL MUD	CHLORIDES 5,600 PPM	
Density / Viscosity	9.2/45		
pH / Fluid Loss	9.5/9.6		
Source of Sample	FLOWLINE		
Rm @ Meas. Temp	.800@80F		
Rmt @ Meas. Temp	.600@80F		
Rmc @ Meas. Temp	.960@80F		
Source of Rmf / Rmc	MEASUREMENT		
Rm @ BHT	.508@126F		
Time Circulation Stopped	3 HOURS		
Time Logger on Bottom	2:15 A.M.		
Maximum Recorded Temperature	126F		
Equipment Number	4010		
Location	HAYS, KANSAS		
Recorded By	JEFF LUEBBERS		
Witnessed By	BRAD RINE		

<<< Fold Here >>>

All interpretations are opinions based on inferences from electrical or other measurements and we cannot and do not guarantee the accuracy or correctness of any interpretation, and we shall not, except in the case of gross or willful negligence on our part, be liable or responsible for any loss, costs, damages, or expenses incurred or sustained by anyone resulting from any interpretation made by any of our officers, agents or employees. These interpretations are also subject to our general terms and conditions set out in our current Price Schedule.

Comments

THANK YOU FOR USING SUPERIOR WELL SERVICE HAYS, KANSAS (785) 628-6395  
DIRECTIONS  
FORD, KS. & HWY 400, 8W. ON "SADDLE RD." TO "RD. 117", 3N. ON BLKTOP, W. INTO

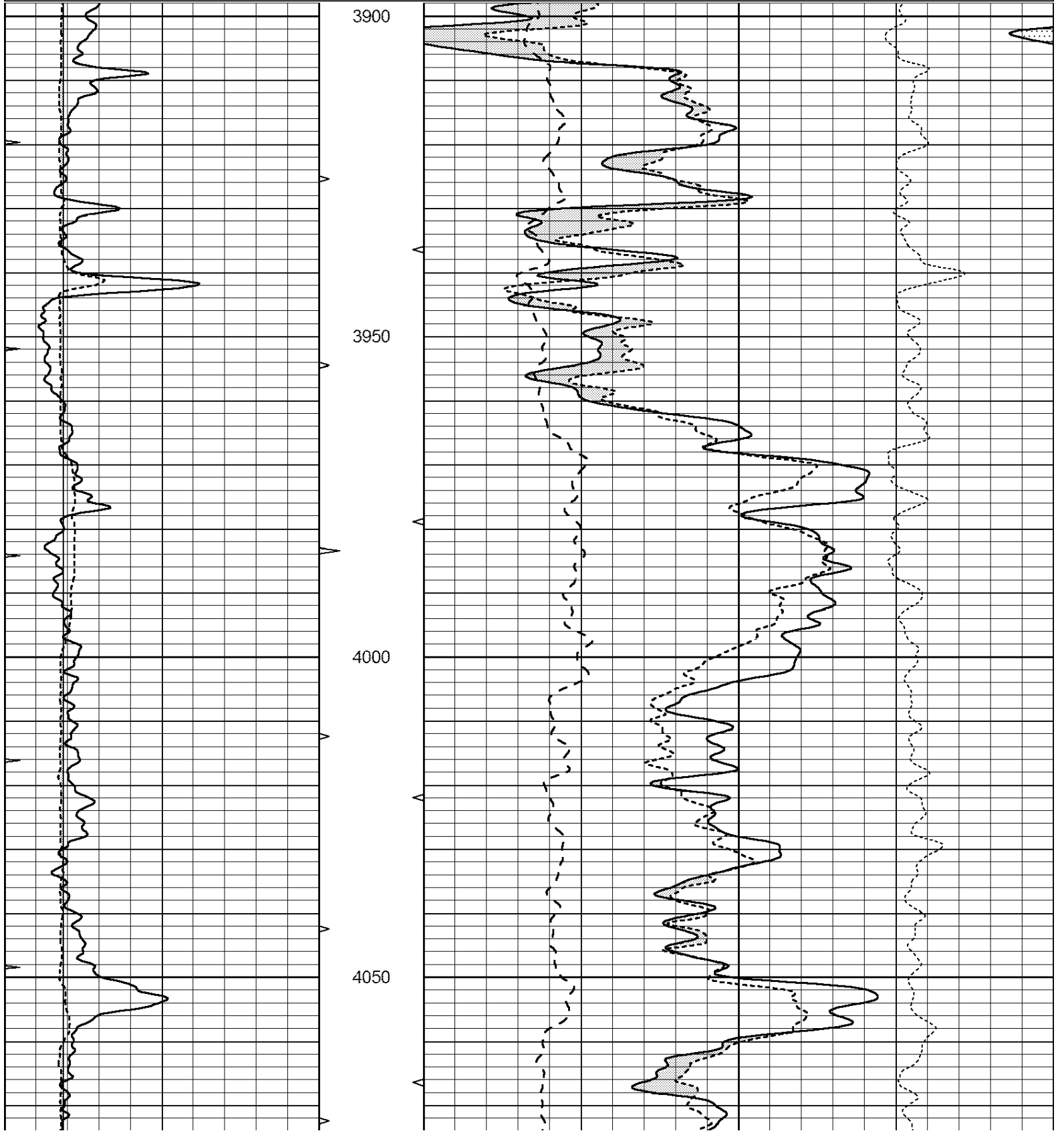


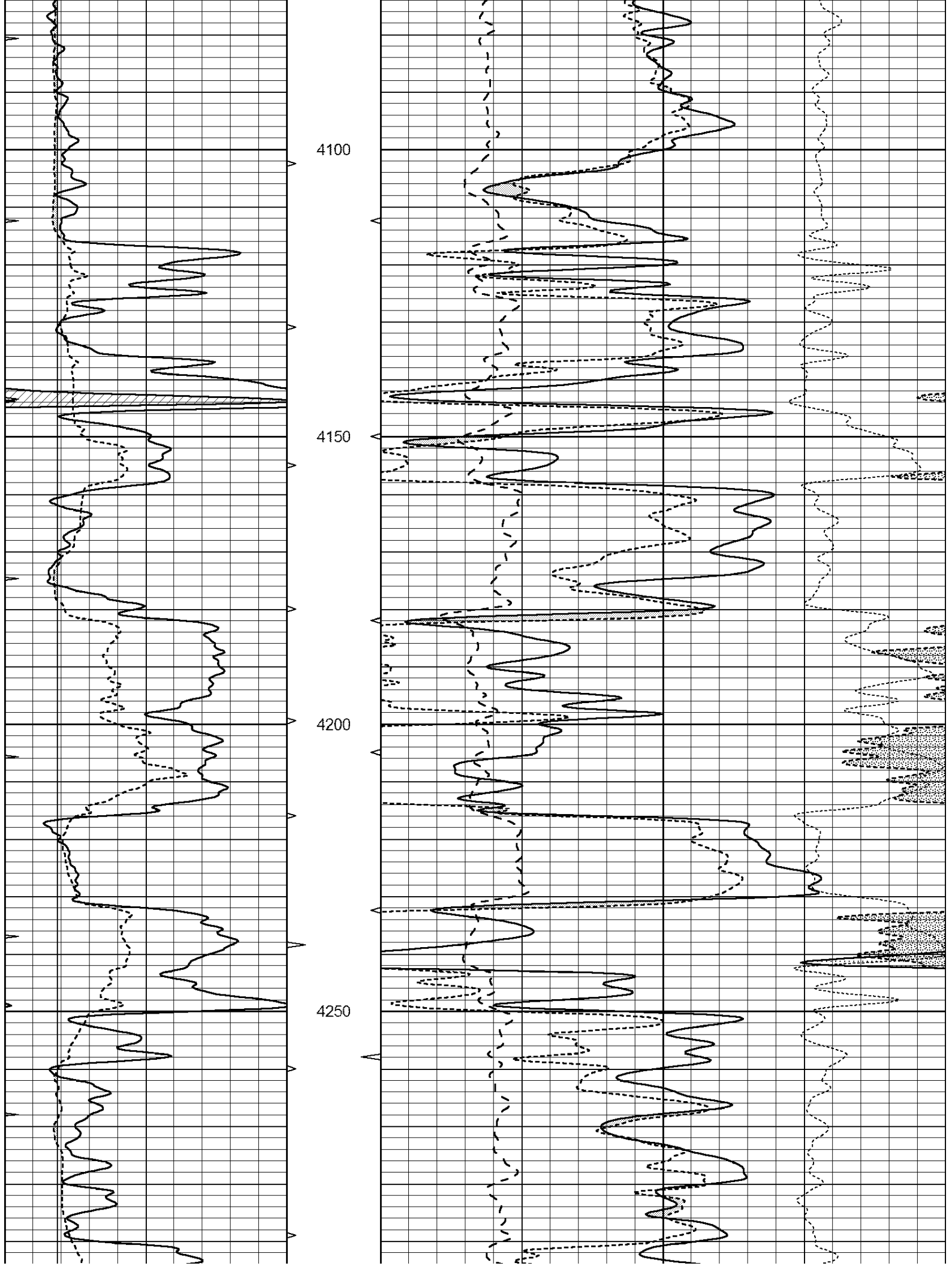
SUPERIOR  
Hays,  
Kansas

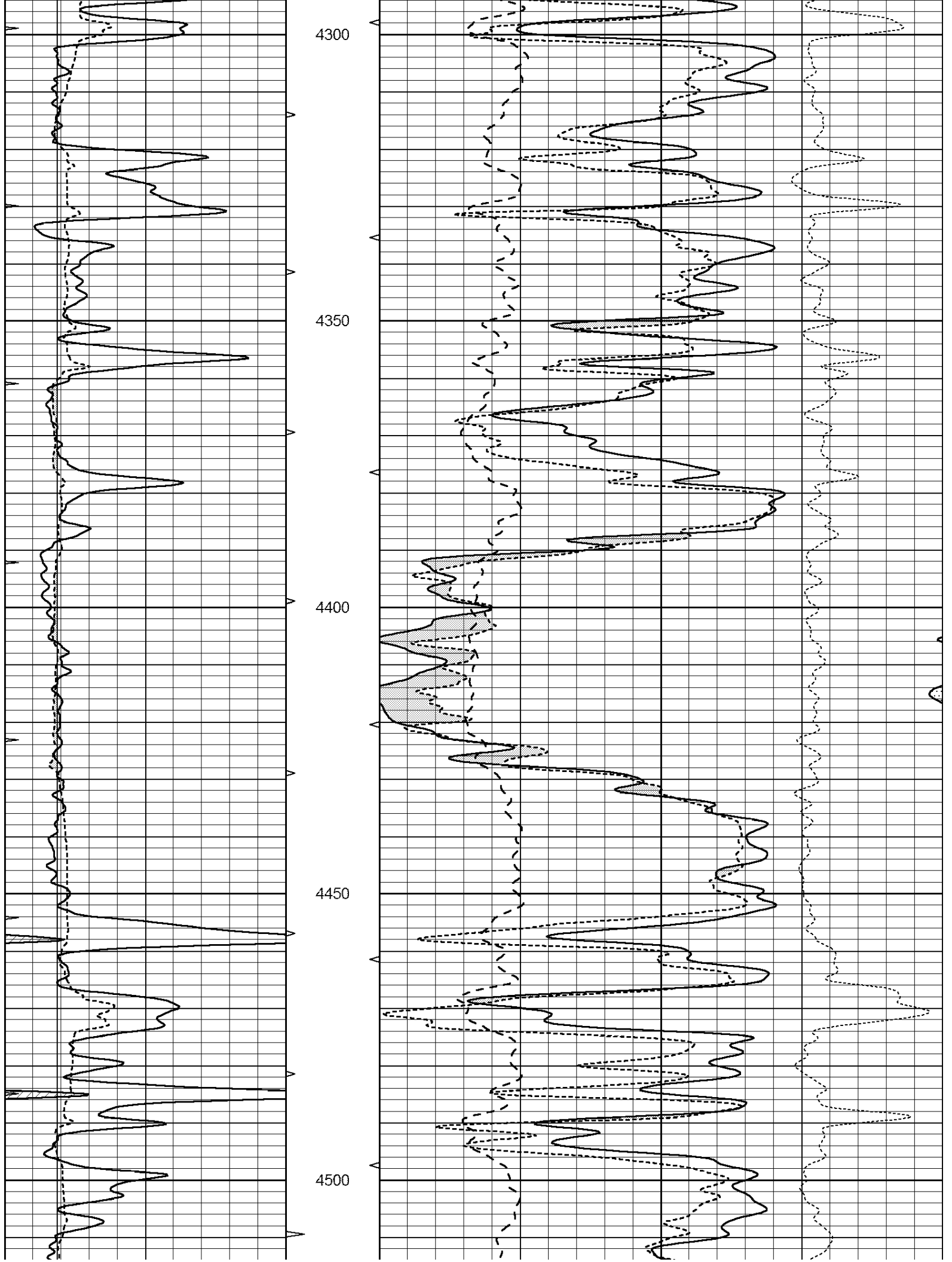
**MAIN SECTION**

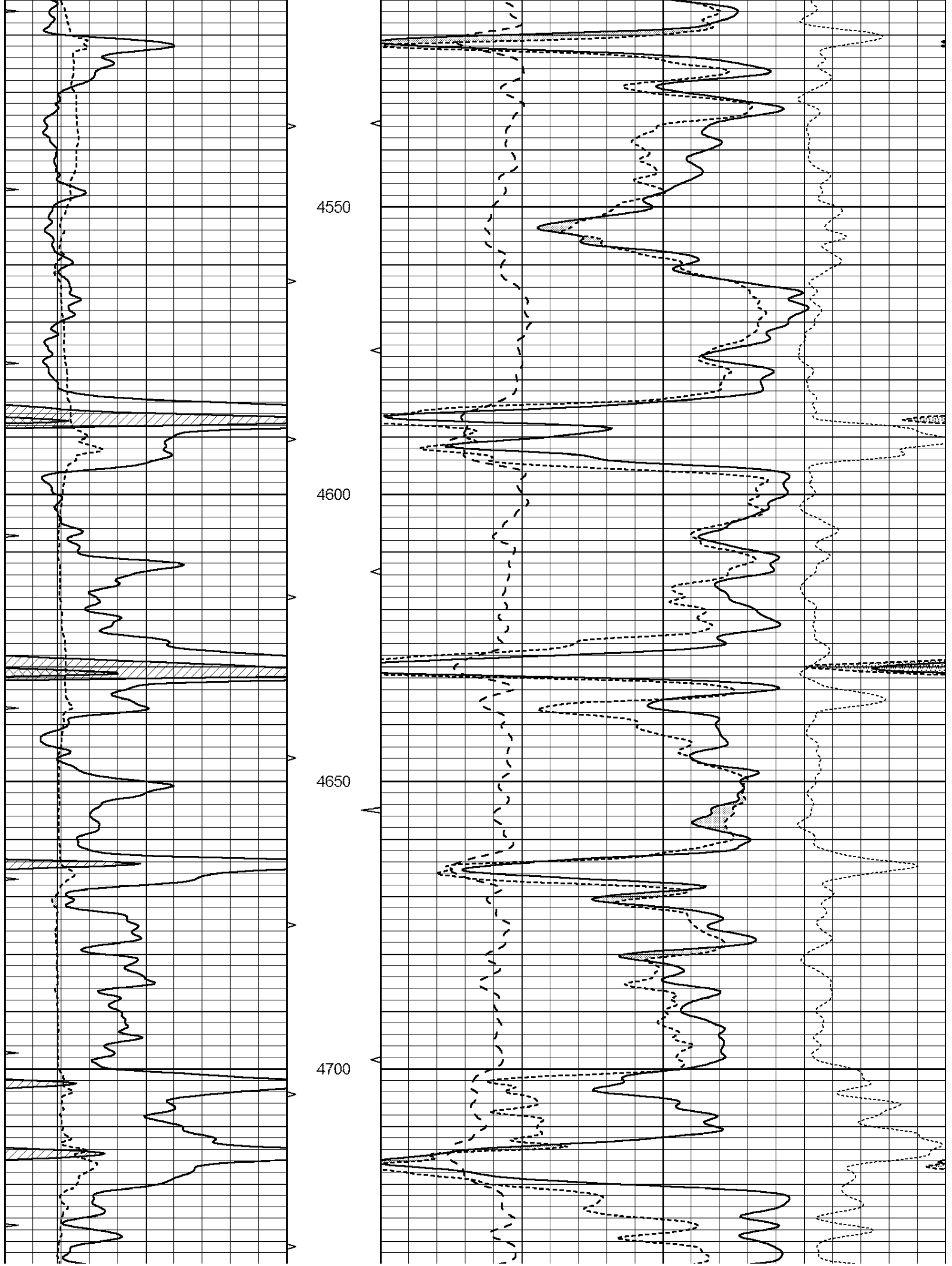
Database File: 408775pe.db  
 Dataset Pathname: pass3.5  
 Presentation Format: ldt\_neu  
 Dataset Creation: Wed May 23 03:56:59 2012  
 Charted by: Depth in Feet scaled 1:240

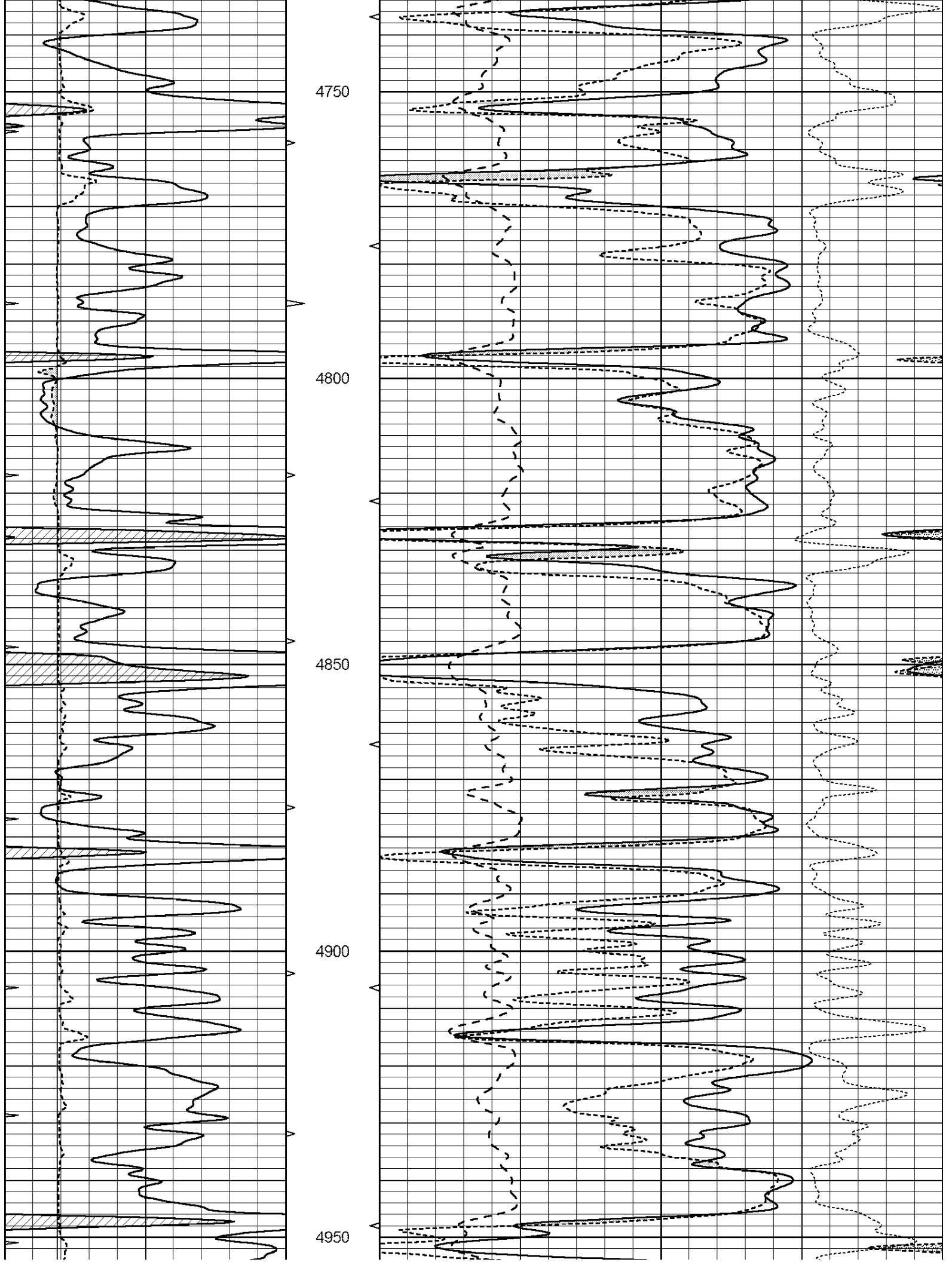
0	GAMMA RAY (GAPI)	150	ABHV	30	COMPENSATED DENSITY (pu)	-10			
6	CALIPER (in)	16	10 (ft3)	0	30	COMPENSATED NEUTRON (pu)	-10		
0	MINMK	20	TBHV	0	PE	10	-0.25	CORRECTION (g/cc)	0.25
			0 (ft3)	10					

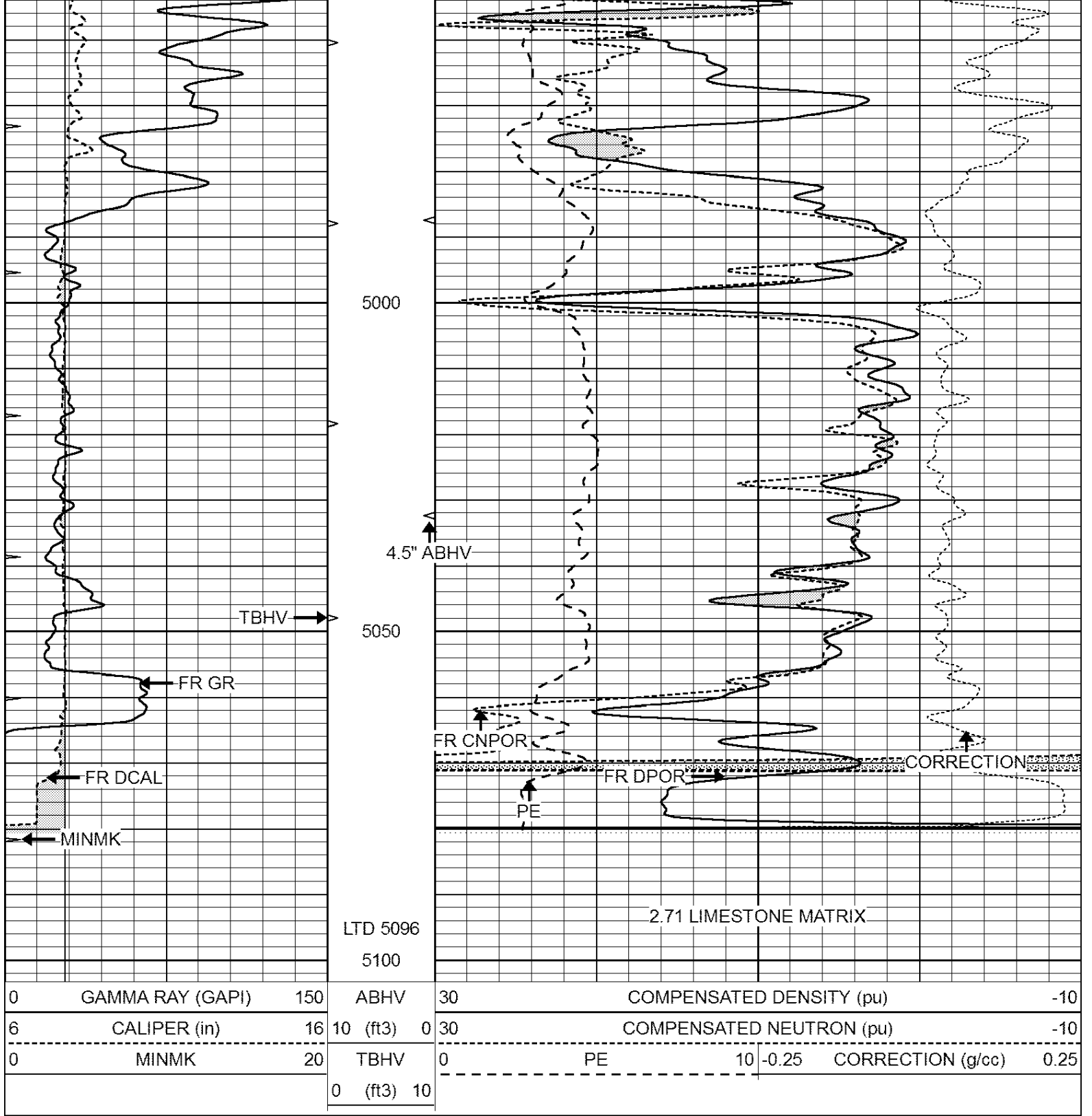












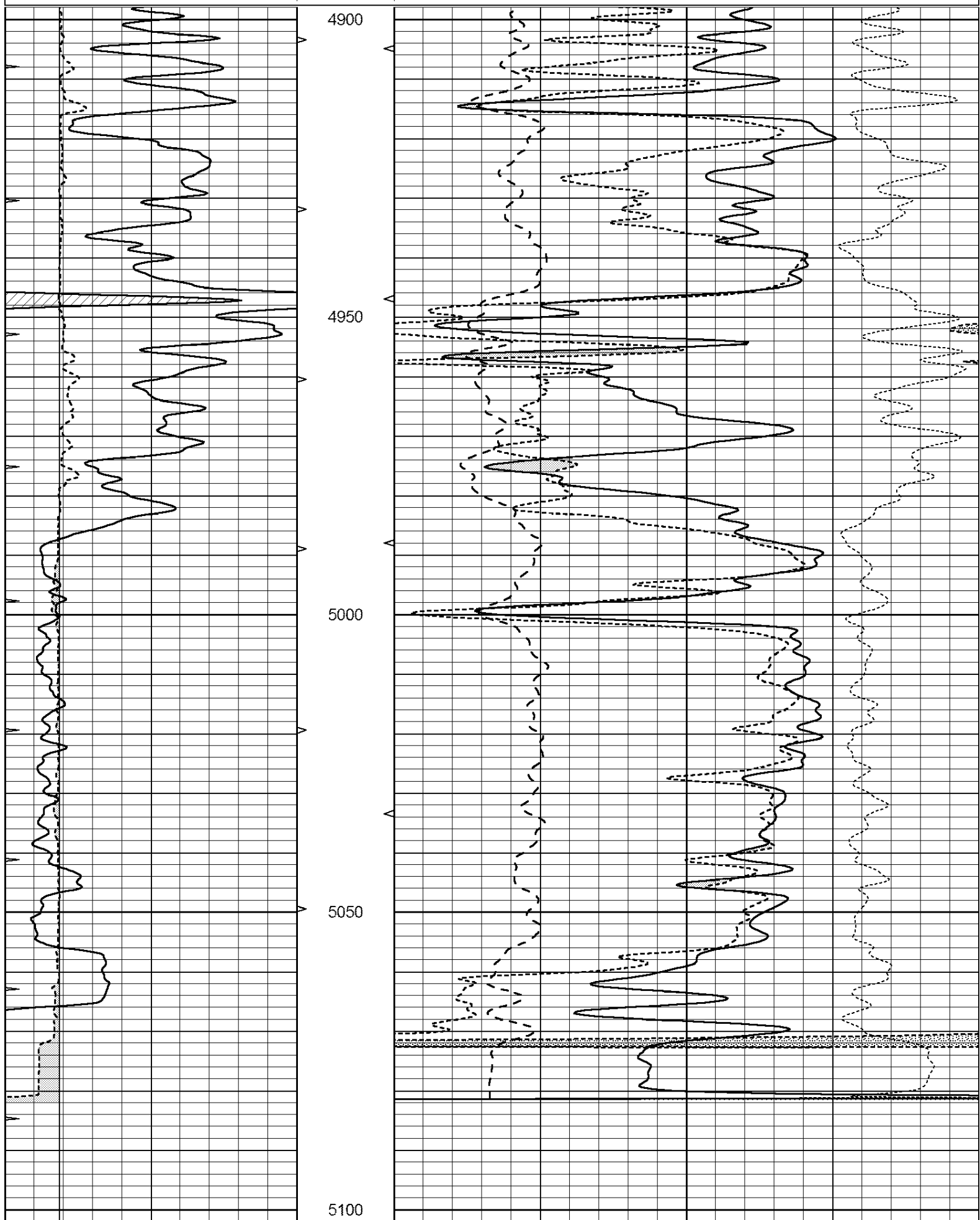
SUPERIOR  
Hays,  
Kansas

# REPEAT SECTION

Database File: 408775pe.db  
 Dataset Pathname: pass2.5  
 Presentation Format: ldt\_neu  
 Dataset Creation: Wed May 23 02:39:05 2012  
 Charted by: Depth in Feet scaled 1:240

0	GAMMA RAY (GAPI)	150	ABHV	30	COMPENSATED DENSITY (pu)	-10
---	------------------	-----	------	----	--------------------------	-----

6	CALIPER (in)	16	10 (ft3)	0	30	COMPENSATED NEUTRON (pu)	-10	
0	MINMK	20	TBHV	0	PE	10	-0.25	
			0 (ft3)	10			CORRECTION (g/cc)	0.25



0	GAMMA RAY (GAPI)	150	ABHV	30	COMPENSATED DENSITY (pu)			-10
6	CALIPER (in)	16	10 (ft3) 0	30	COMPENSATED NEUTRON (pu)			-10
0	MINMK	20	TBHV	0	PE	10	-0.25	CORRECTION (g/cc) 0.25
			0 (ft3) 10					

**Calibration Report**

Database File: 408775pe.db  
 Dataset Pathname: pass3.5  
 Dataset Creation: Wed May 23 03:56:59 2012

**Dual Induction Calibration Report**

Serial-Model: DIL4-GEAR  
 Performed: Wed May 23 02:30:26 2012

Loop:	Readings			References			Results	
	Air	Loop		Air	Loop		m	b
Deep	0.008	0.666	V	0.000	400.000	mmho/m	570.000	-8.000
Medium	-0.003	0.769	V	0.000	462.500	mmho/m	560.000	-7.000
Internal:	Zero	Cal		Zero	Cal		m	b
Deep	0.013	0.651	V	0.000	400.000	mmho/m	627.541	-8.365
Medium	0.020	0.754	V	0.000	462.500	mmho/m	630.311	-12.549

**Litho Density Calibration Report**  
 Serial: 006 Model: PRB  
 Performed Sun Aug 15 09:48:41 2010

**Litho Density Calibration**

	Background	Magnesium	Aluminum	Sandstone	
Window 1	1686.6	11612.8	3932.0	12718.8	cps
Window 2	1531.4	9204.7	3267.8	9851.9	cps
Window 3	1198.3	4733.6	1952.5	4920.6	cps
Window 4	317.3	321.2	325.9	303.6	cps
Long Space	0.0	7673.3	1736.4	8320.4	cps
Short Space	1.7	2548.5	1657.2	2628.8	cps
Rho		1.7100	2.5900	1.3800	g/cc
Pe			2.5700	1.5500	
Rib Angle	: 43.8	Rib Slope	: 0.961	Density/Spine Ratio	: 0.569
Spine Angle	: 73.8	Spine Slope	: 3.453	Spine Intercept	: -18.1

**Caliper**

	Readings	Reference	
Low Ref	4.0	8.4	
High Ref	5.9	15.0	
	Gain: 3.4		Offset: -5.2

**Compensated Neutron Calibration Report**

Serial Number: 070808  
 Tool Model: Probe

**PRE-SURVEY VERIFICATION**

Detector	Readings	Measured	Target
Short Space	cps		

Long Space

cps

pu

pu

POST-SURVEY VERIFICATION

Detector

Readings

Measured

Target

Short Space

cps

Long Space

cps

pu

pu

Gamma Ray Calibration Report

Serial Number:

070559

Tool Model:

OPEN\_GR

Performed:

Tue May 22 19:38:45 2012

Calibrator Value:

1.0

GAPI

Background Reading:

0.0

cps

Calibrator Reading:

1.0

cps

Sensitivity:

0.3000

GAPI/cps