



**SUPERIOR**  
Hays,  
Kansas

**DUAL INDUCTION  
LOG**

Company VINCENT OIL CORPORATION  
Well SCHNEWEIS #1-14  
Field WILDCAT  
County FORD  
State KANSAS

Company VINCENT OIL CORPORATION  
Well SCHNEWEIS #1-14  
Field WILDCAT  
County FORD State KANSAS

Location: API # : 15-057-20804-0000  
2525' FSL & 390' FEL  
SEC 14 TWP 27S RGE 24W  
Permanent Datum GROUND LEVEL Elevation 2452  
Log Measured From KELLY BUSHING 8' A.G.L.  
Drilling Measured From KELLY BUSHING  
Elevation  
K.B. 2460  
D.F. 2458  
G.L. 2452

Date	5/23/12		
Run Number	ONE		
Depth Driller	5100		
Depth Logger	5096		
Bottom Logged Interval	5094		
Top Log Interval	00		
Casing Driller	8 5/8"@494'		
Casing Logger	494		
Bit Size	7 7/8"		
Type Fluid in Hole	CHEMICAL MUD	CHLORIDES 5,600 PPM	
Density / Viscosity	9.2/45		
pH / Fluid Loss	9.5/9.6		
Source of Sample	FLOWLINE		
Rm @ Meas. Temp	.800@80F		
Rmt @ Meas. Temp	.600@80F		
Rmc @ Meas. Temp	.960@80F		
Source of Rmf / Rmc	MEASUREMENT		
Rm @ BHT	.508@126F		
Time Circulation Stopped	3 HOURS		
Time Logger on Bottom	2:15 A.M.		
Maximum Recorded Temperature	126F		
Equipment Number	4010		
Location	HAYS, KANSAS		
Recorded By	JEFF LUEBBERS		
Witnessed By	BRAD RINE		

<<< Fold Here >>>

All interpretations are opinions based on inferences from electrical or other measurements and we cannot and do not guarantee the accuracy or correctness of any interpretation, and we shall not, except in the case of gross or willful negligence on our part, be liable or responsible for any loss, costs, damages, or expenses incurred or sustained by anyone resulting from any interpretation made by any of our officers, agents or employees. These interpretations are also subject to our general terms and conditions set out in our current Price Schedule.

Comments

THANK YOU FOR USING SUPERIOR WELL SERVICE HAYS, KANSAS (785) 628-6395  
DIRECTIONS  
FORD, KS. & HWY 400, 8W. ON "SADDLE RD." TO "RD. 117", 3N. ON BLKTOP, W. INTO



**SUPERIOR**  
Hays,  
Kansas

**MAIN SECTION**

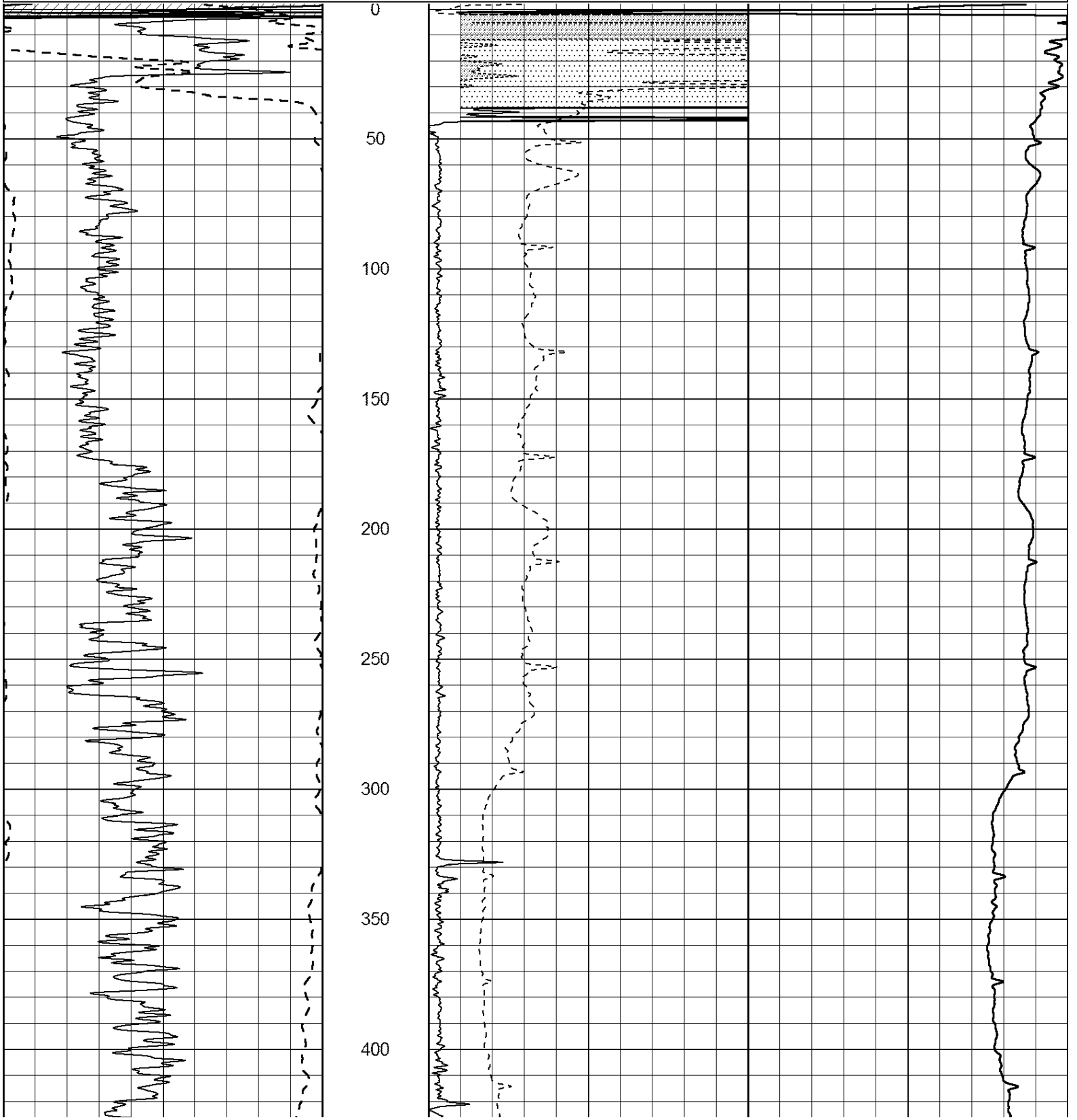
Database File: 408775pe.db  
 Dataset Pathname: pass3.5  
 Presentation Format: dil2  
 Dataset Creation: Wed May 23 03:56:59 2012  
 Charted by: Depth in Feet scaled 1:600

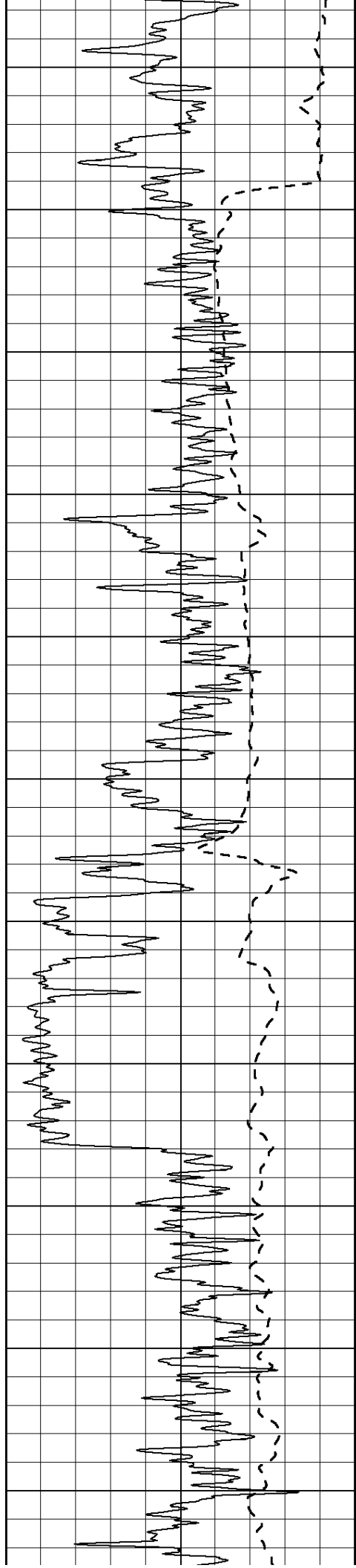
0	Gamma Ray (GAPI)	150
-100	SP (mV)	100

0	RLL3 (Ohm-m)	50
0	RILD (Ohm-m)	50

1000	CILD (mmho/m)	0
------	---------------	---

50	RILD X10 (Ohm-m)	500
50	RLL3 X10 (Ohm-m)	500





450

500

550

600

650

700

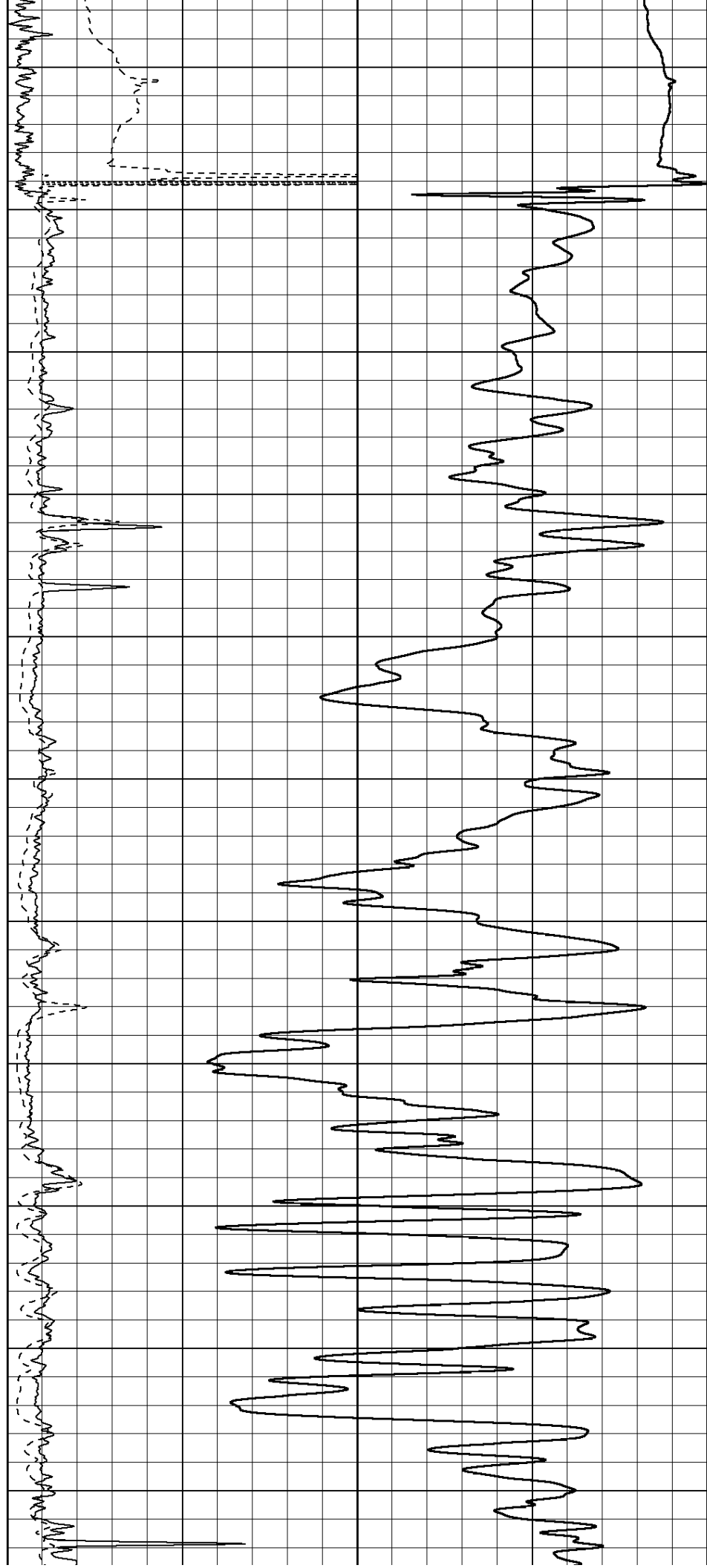
750

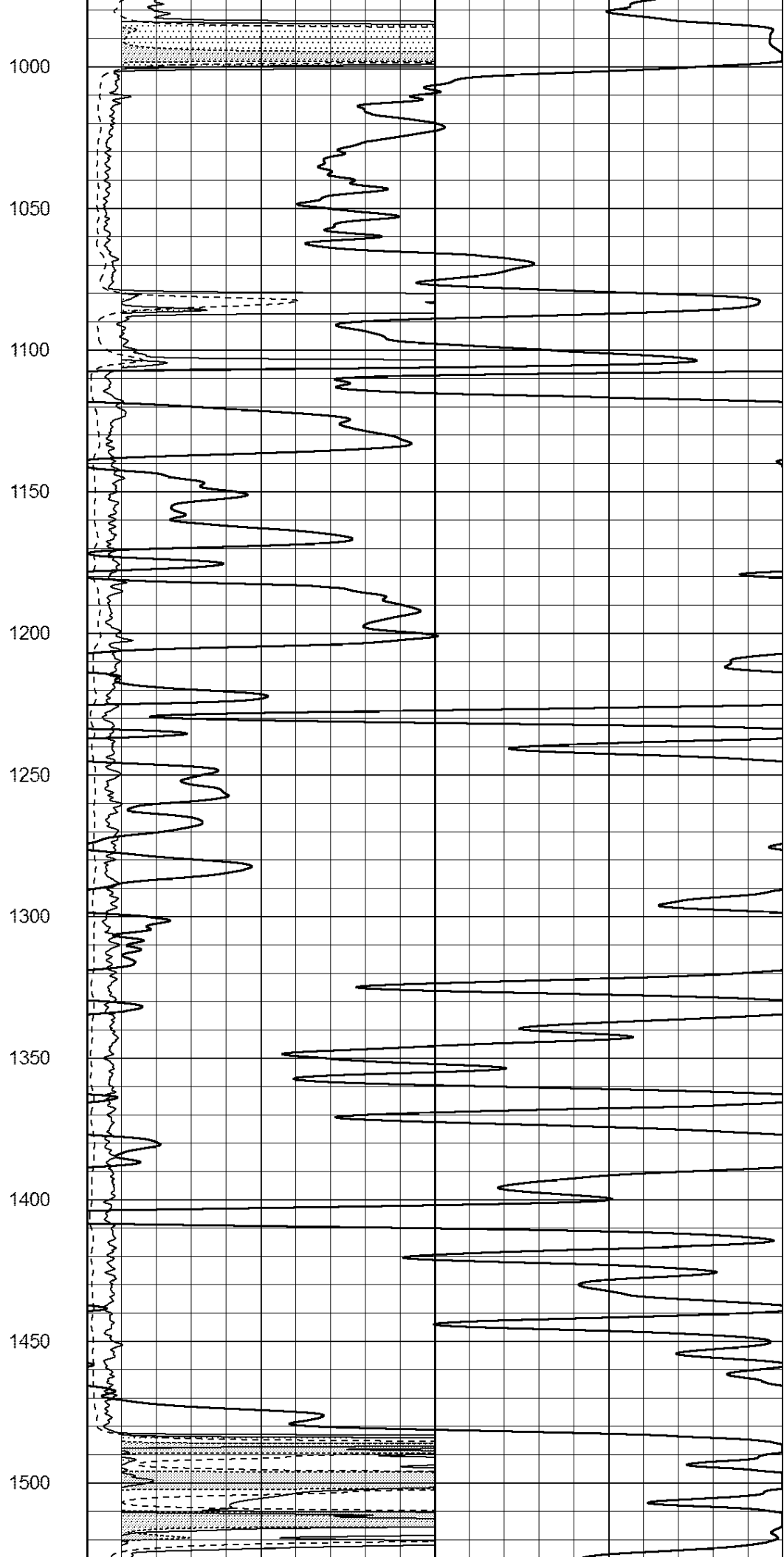
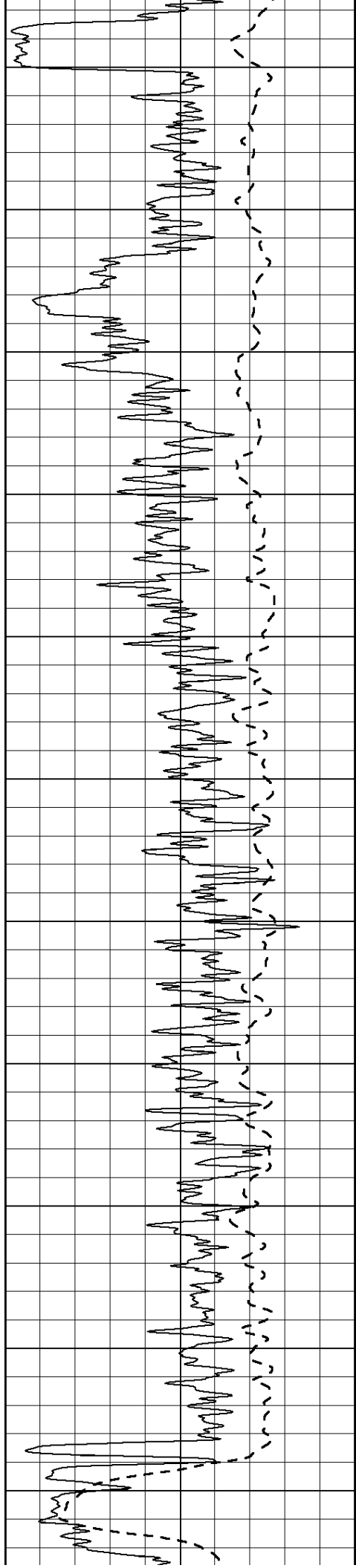
800

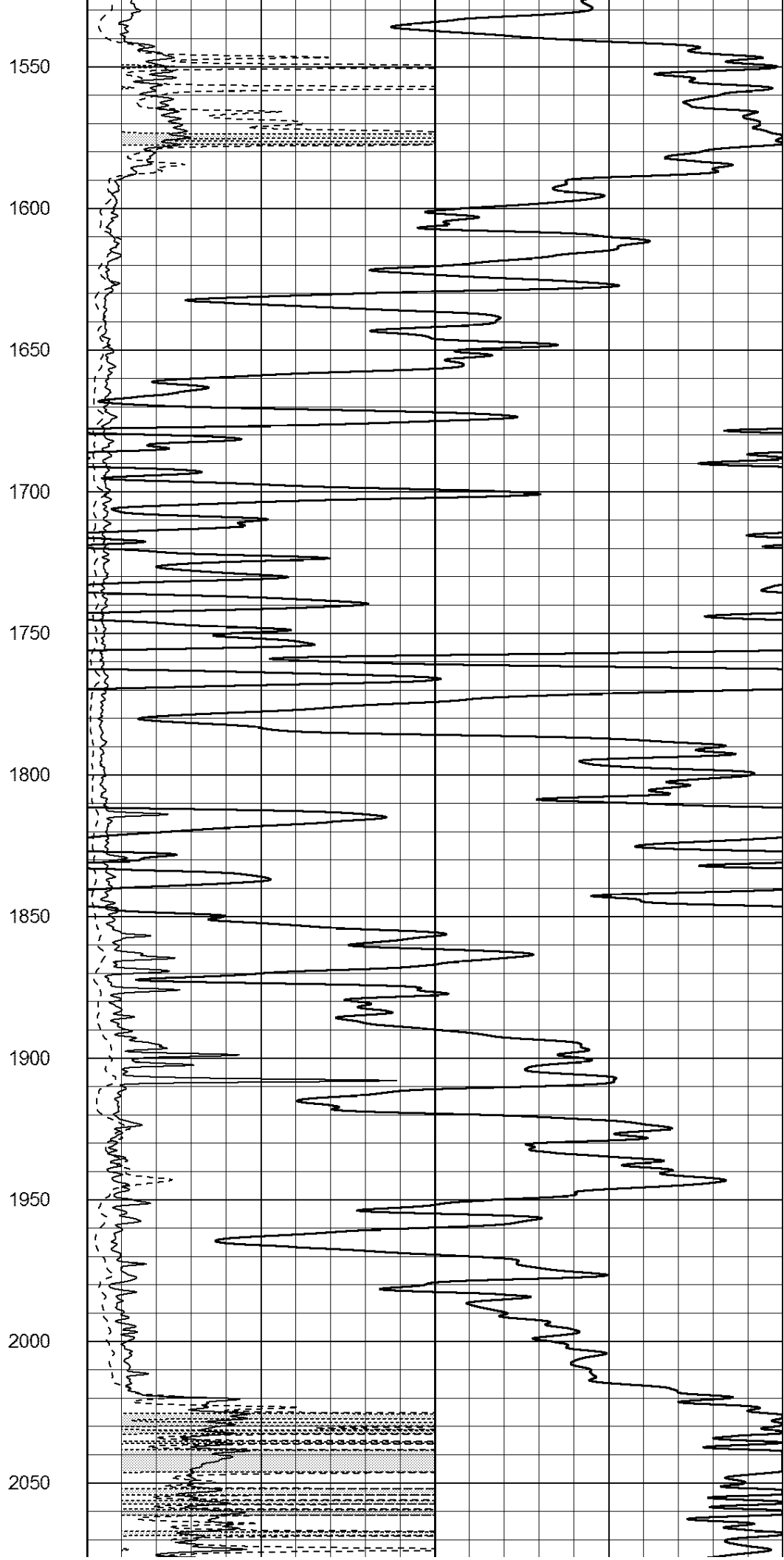
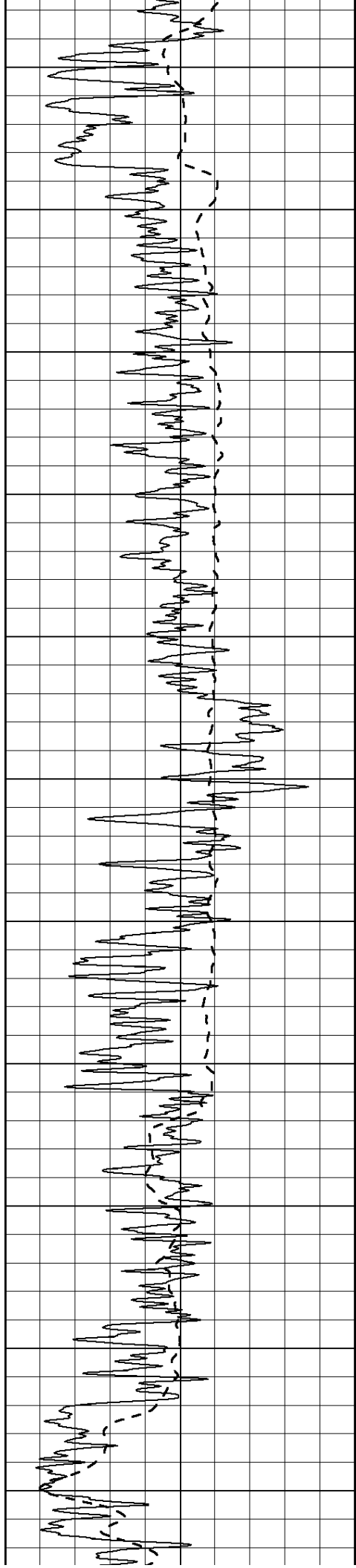
850

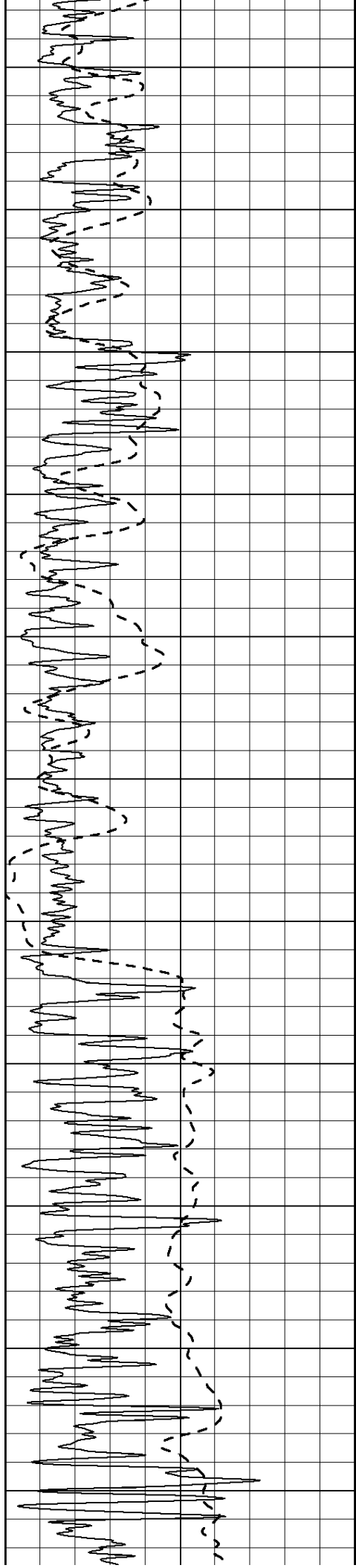
900

950









2100

2150

2200

2250

2300

2350

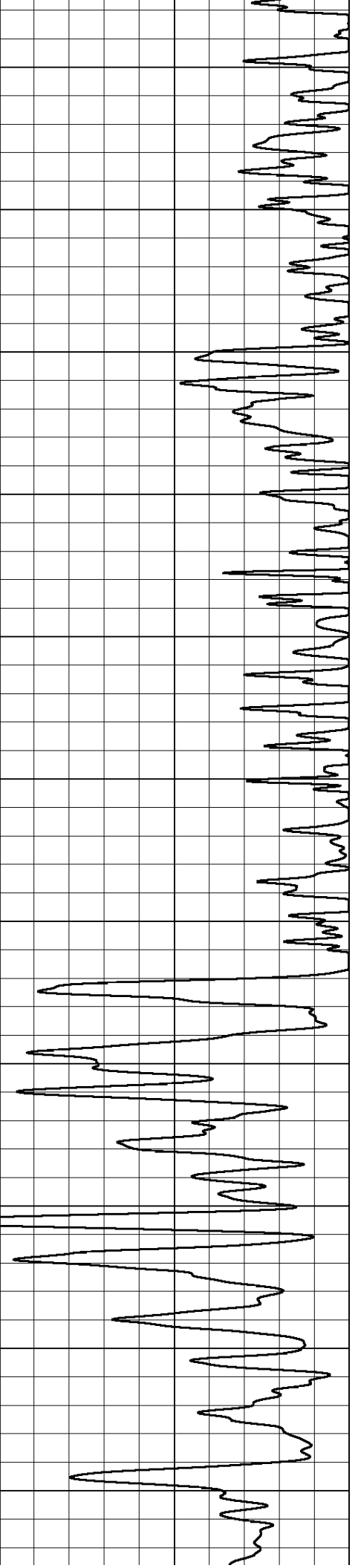
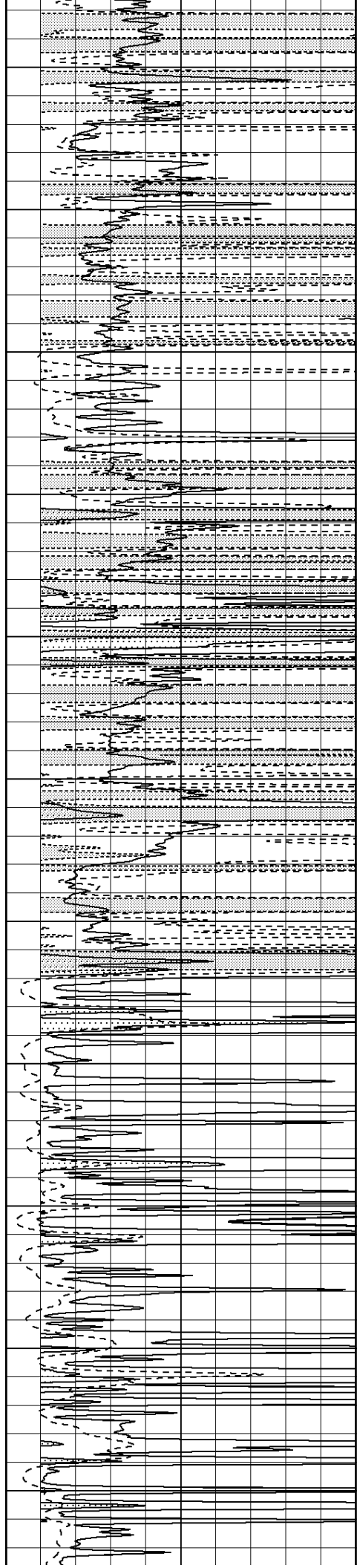
2400

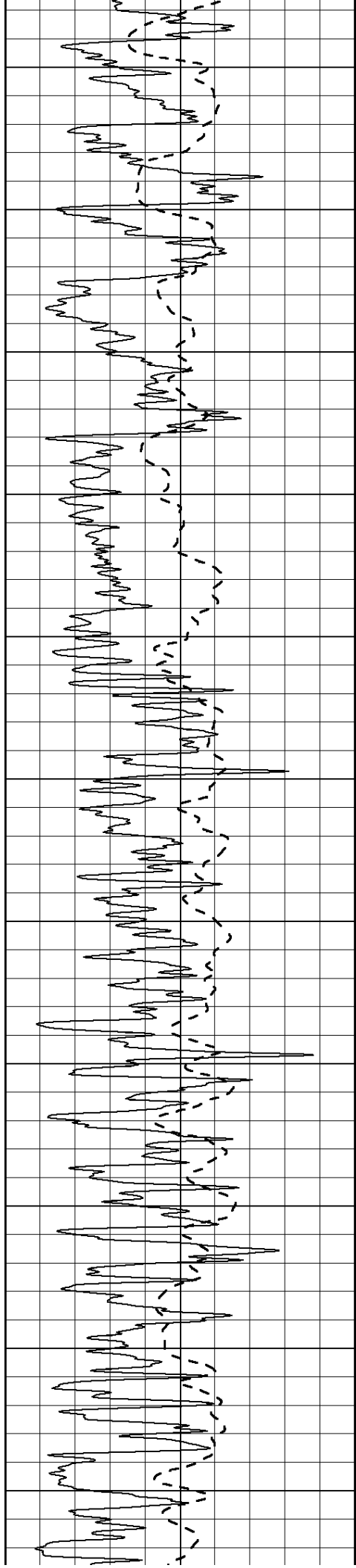
2450

2500

2550

2600





2650

2700

2750

2800

2850

2900

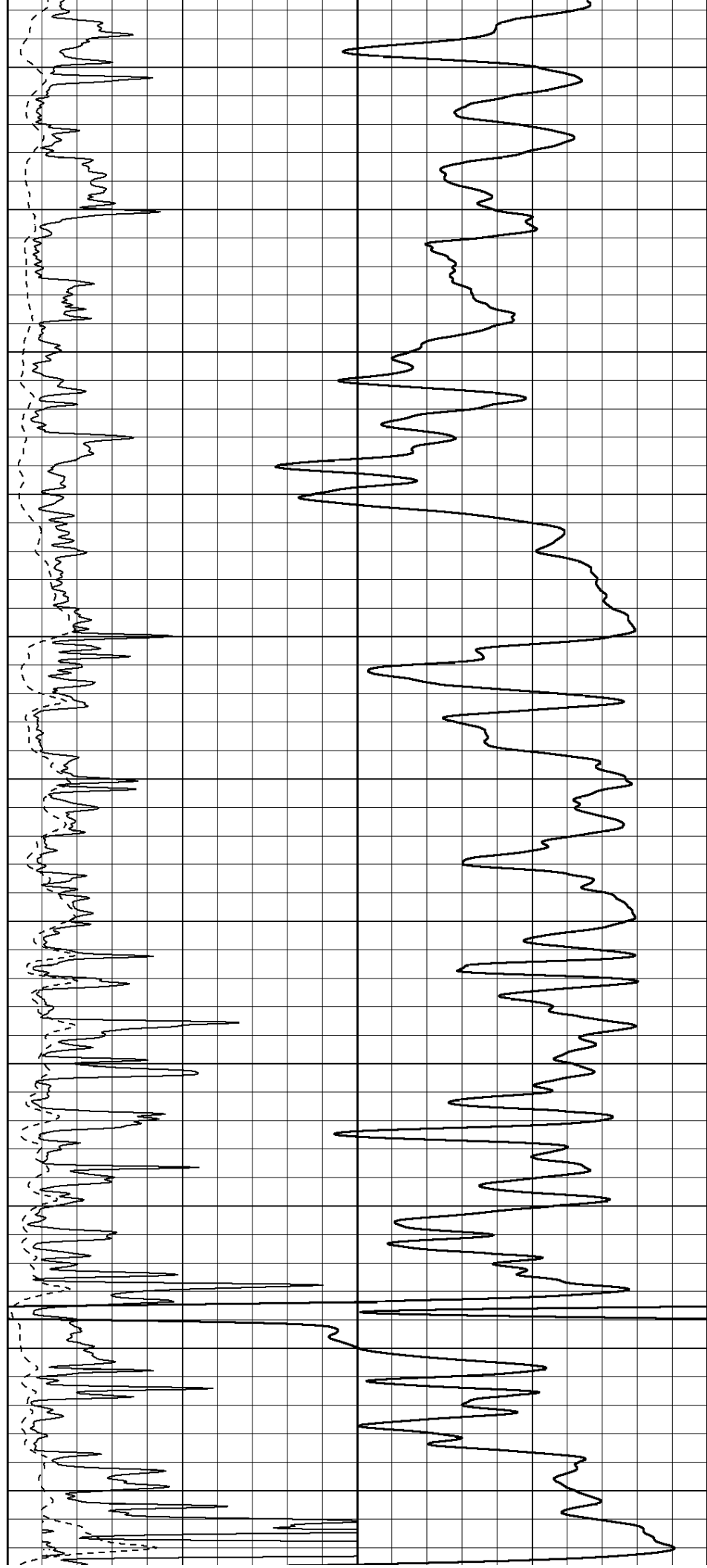
2950

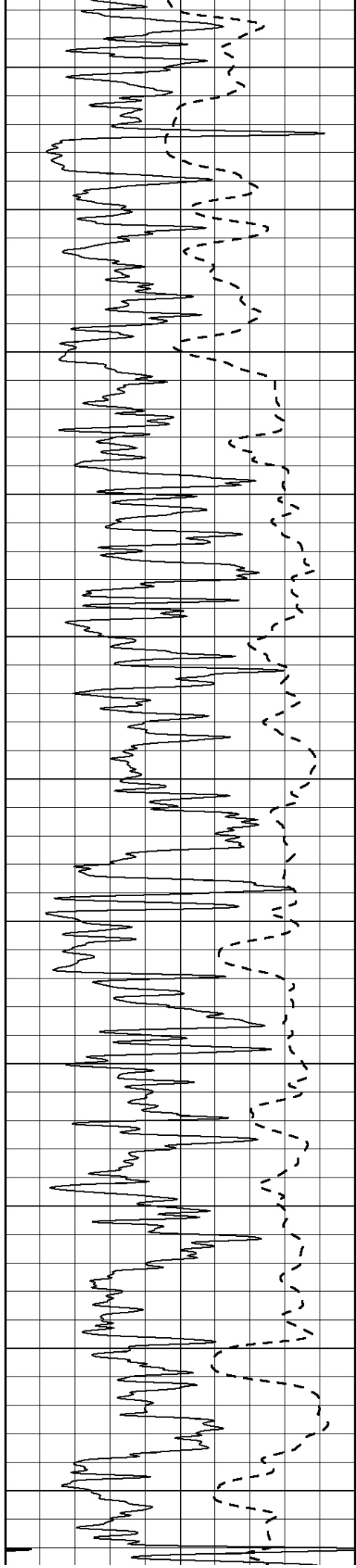
3000

3050

3100

3150





3200

3250

3300

3350

3400

3450

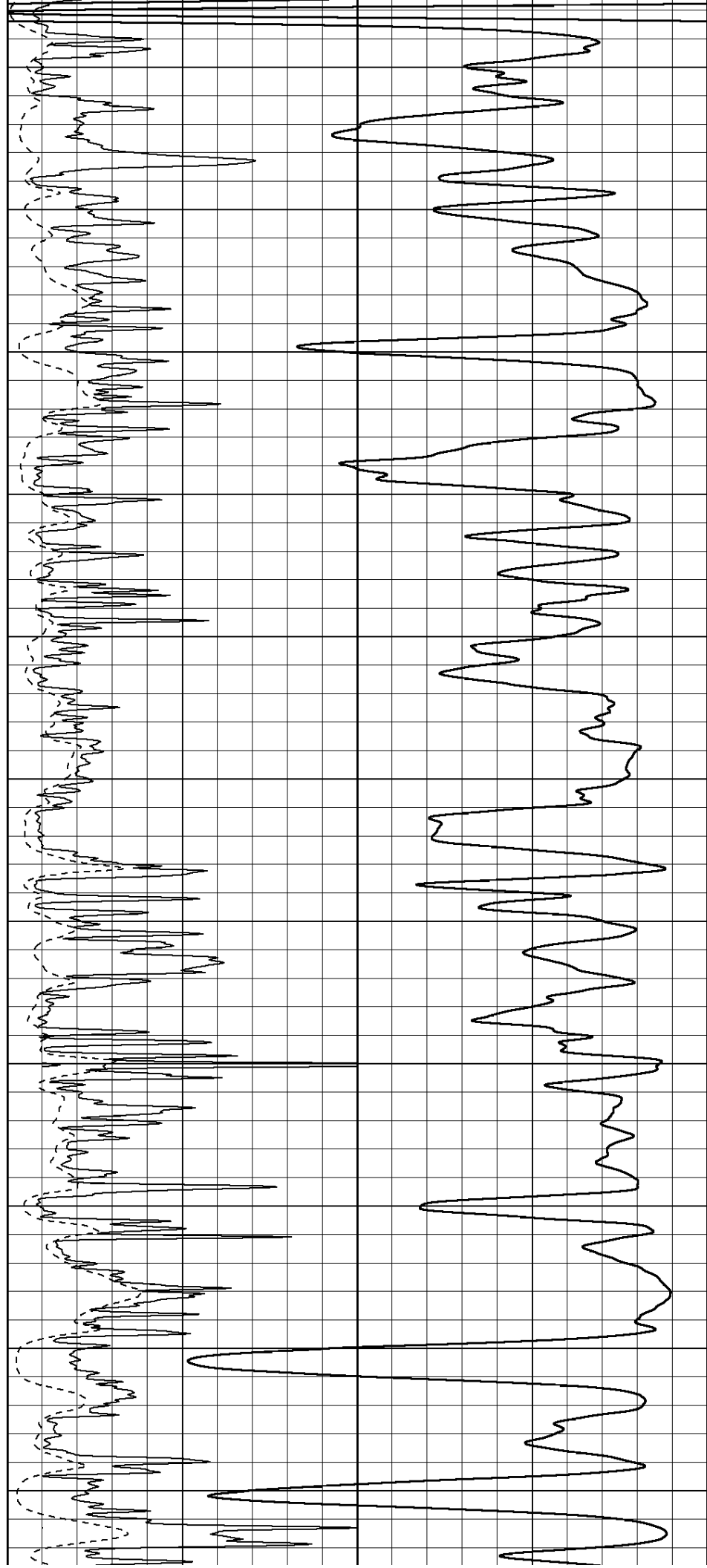
3500

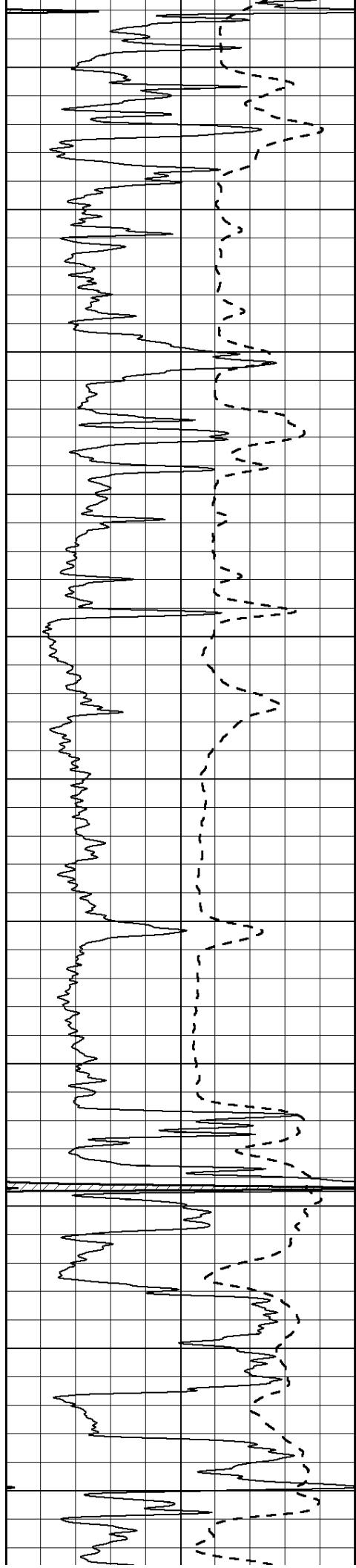
3550

3600

3650

3700





3750

3800

3850

3900

3950

4000

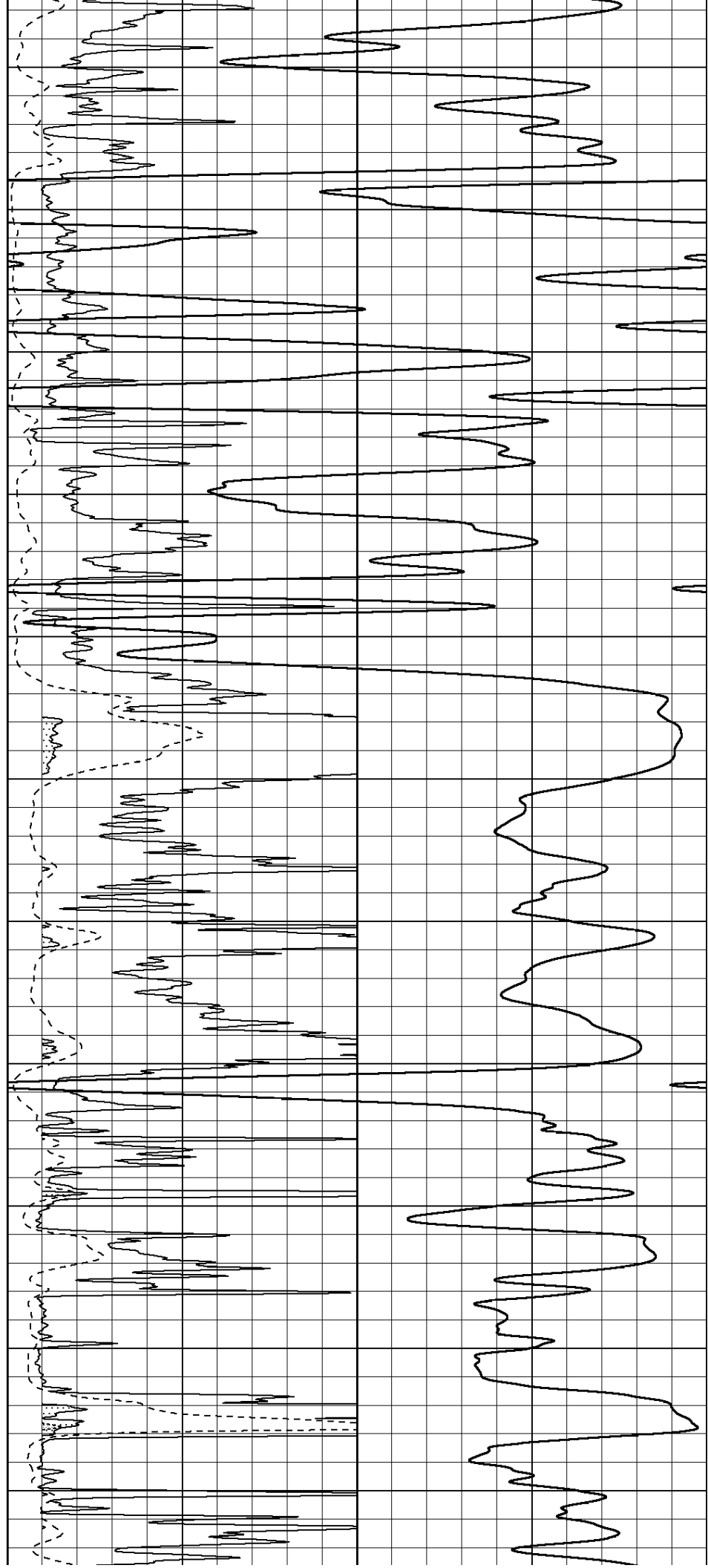
4050

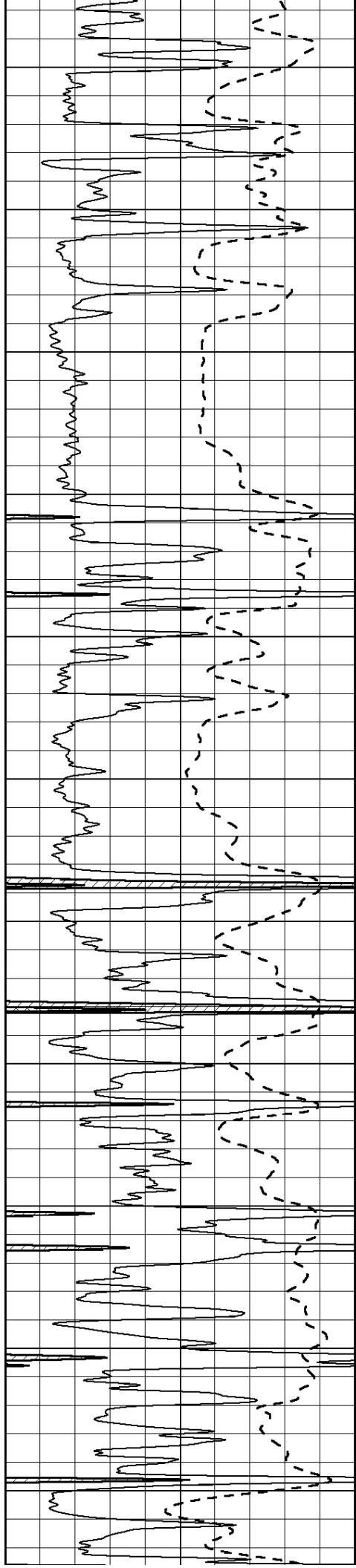
4100

4150

4200

4250





4300

4350

4400

4450

4500

4550

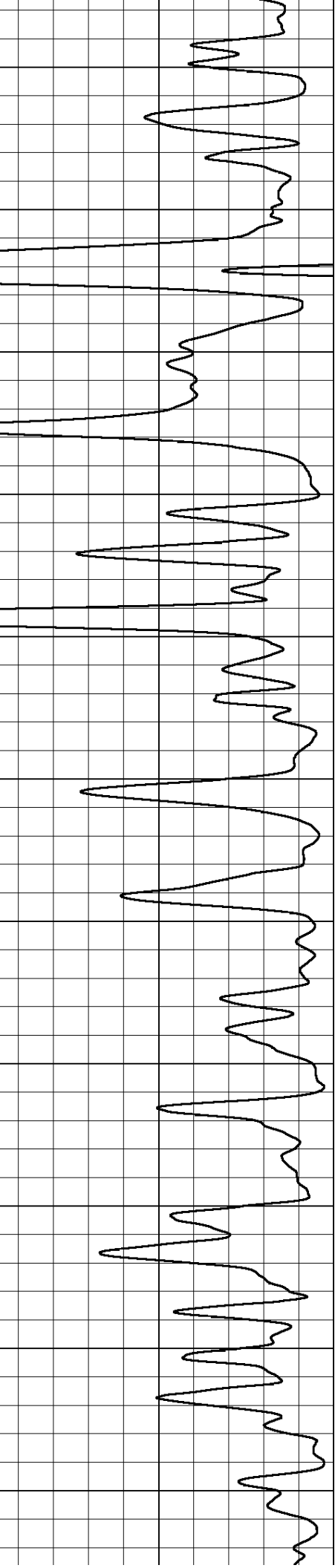
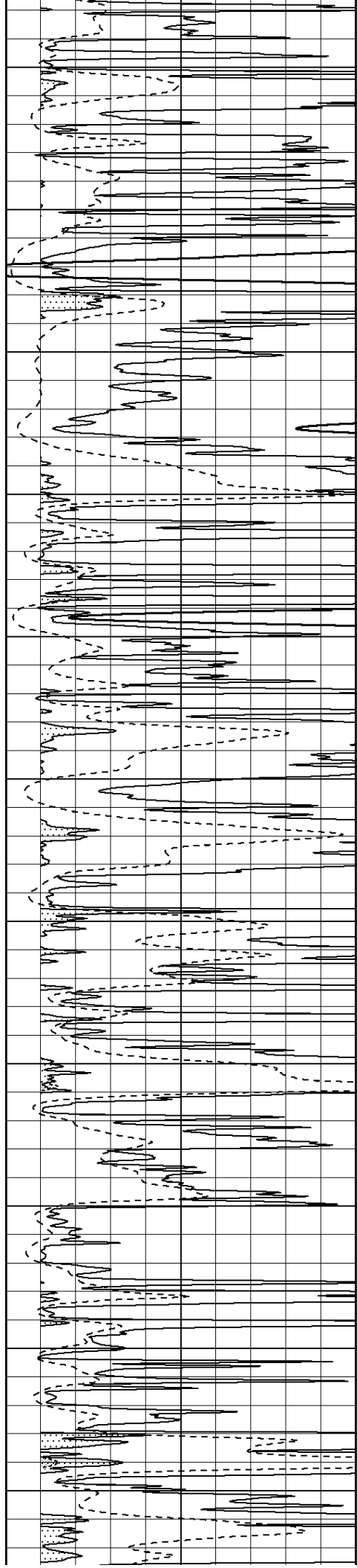
4600

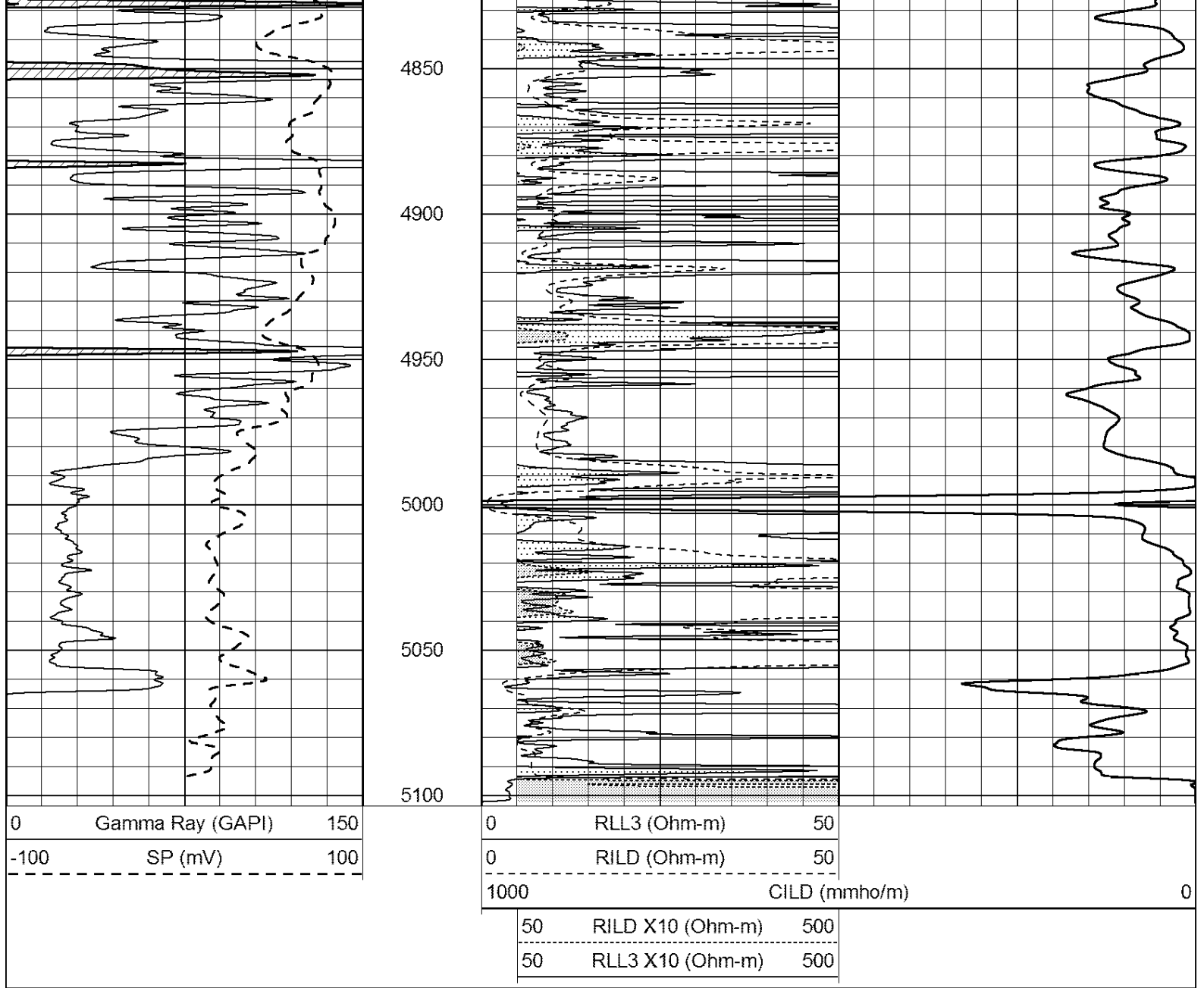
4650

4700

4750

4800





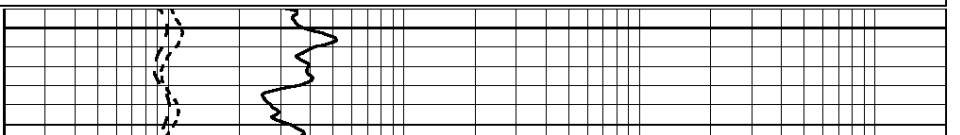
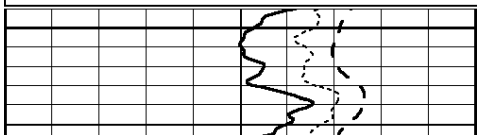
SUPERIOR  
Hays,  
Kansas

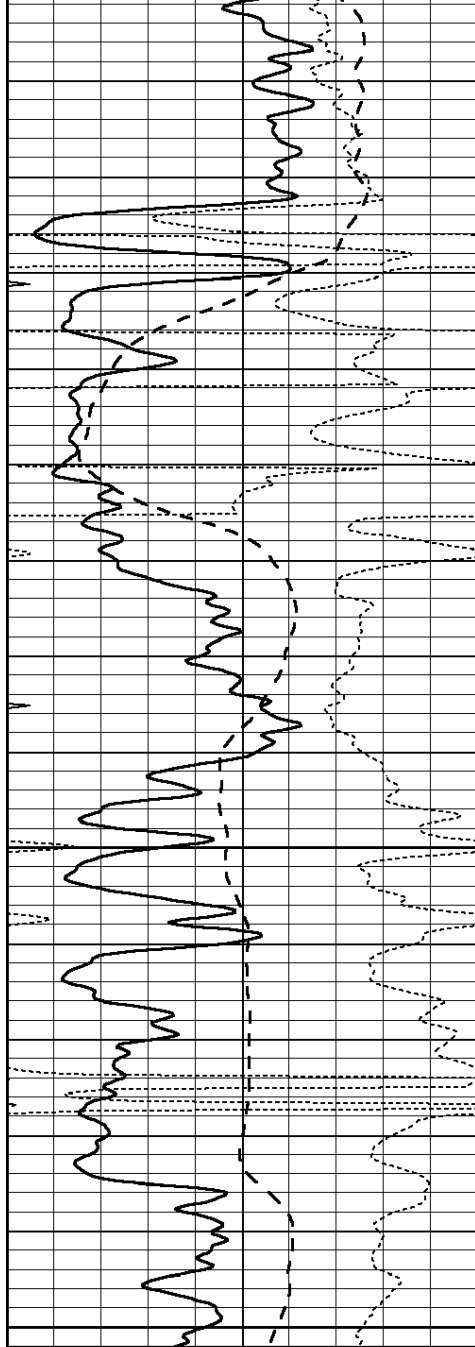
# ANHYDRITE

Database File: 408775pe.db  
 Dataset Pathname: pass3.6  
 Presentation Format: dil  
 Dataset Creation: Wed May 23 03:58:04 2012  
 Charted by: Depth in Feet scaled 1:240

0	GAMMA RAY (GAPI)	150
-100	SP (mV)	100
-250	Rxo/Rt	50
0	MINMK	20

0.2	SHALLOW GUARD (Ohm-m)	2000
0.2	DEEP INDUCTION (Ohm-m)	2000
0.2	MEDIUM INDUCTION (Ohm-m)	2000



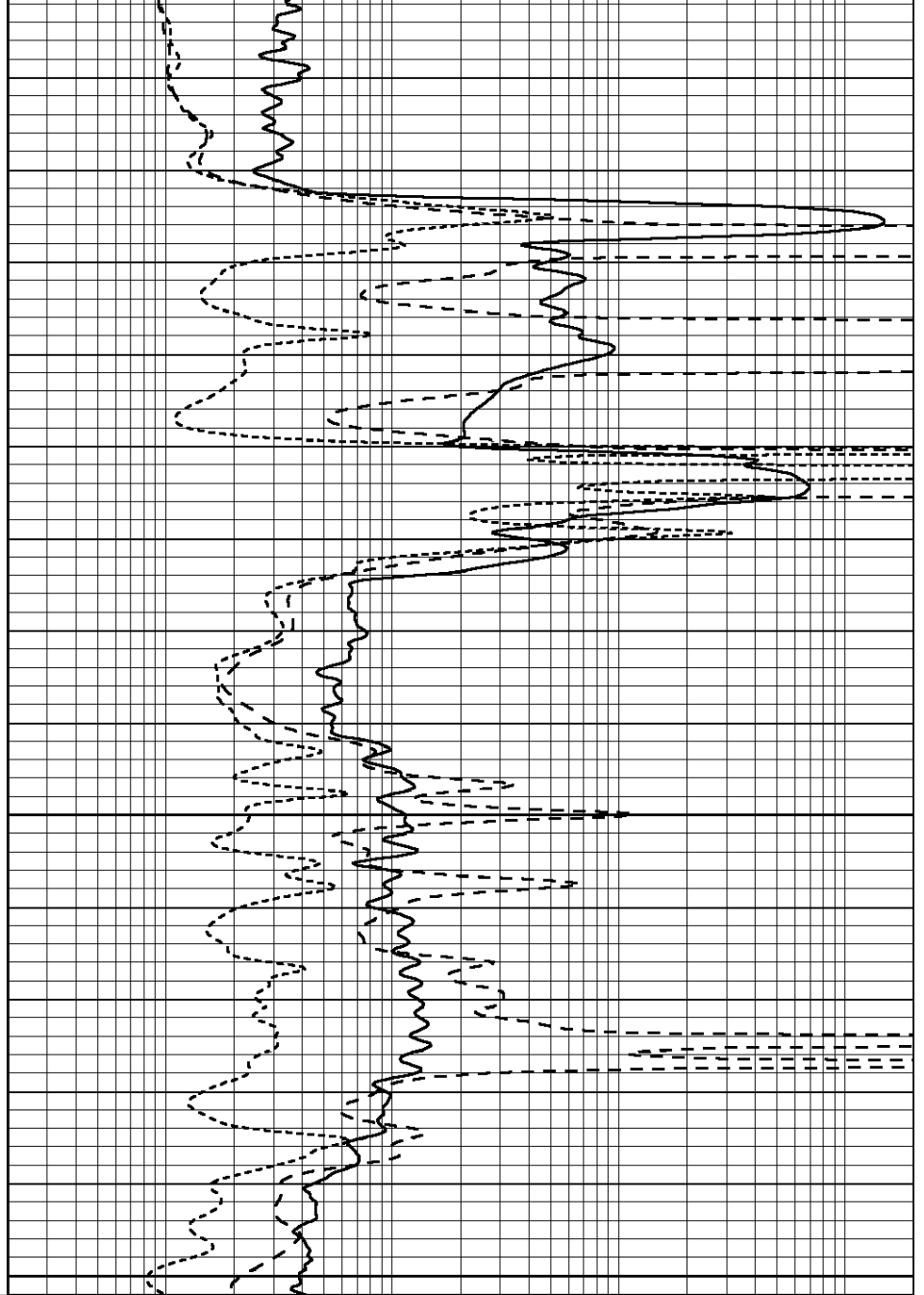


1500

1550

1600

0	GAMMA RAY (GAPI)	150
-100	SP (mV)	100
-250	Rxo/Rt	50
0	MINMK	20



0.2	SHALLOW GUARD (Ohm-m)	2000
0.2	DEEP INDUCTION (Ohm-m)	2000
0.2	MEDIUM INDUCTION (Ohm-m)	2000



SUPERIOR  
Hays,  
Kansas

# MAIN SECTION

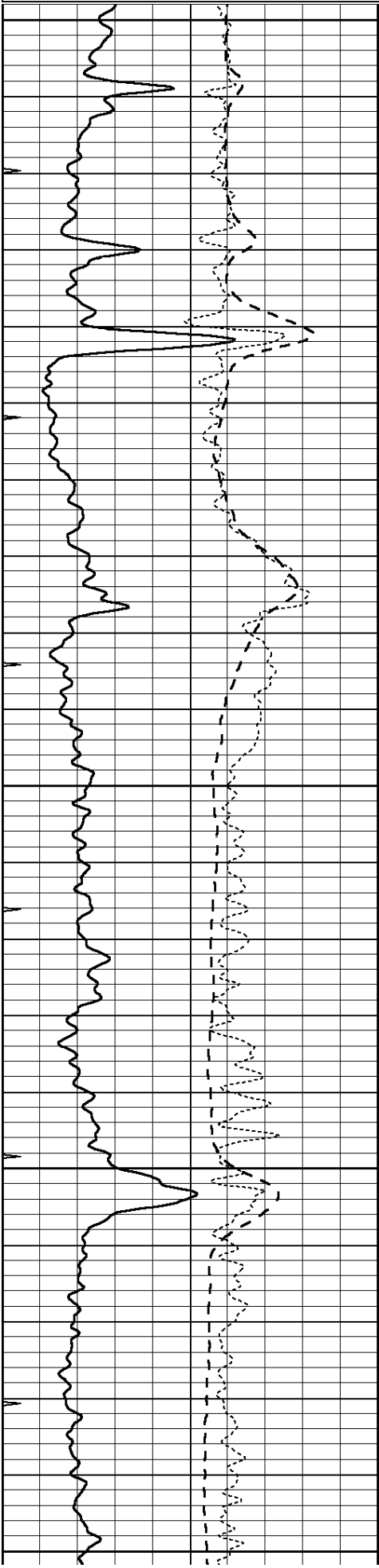
Database File: 408775pe.db  
 Dataset Pathname: pass3.5  
 Presentation Format: dil  
 Dataset Creation: Wed May 23 03:56:59 2012  
 Charted by: Depth in Feet scaled 1:240

0	GAMMA RAY (GAPI)	150
-100	SP (mV)	100

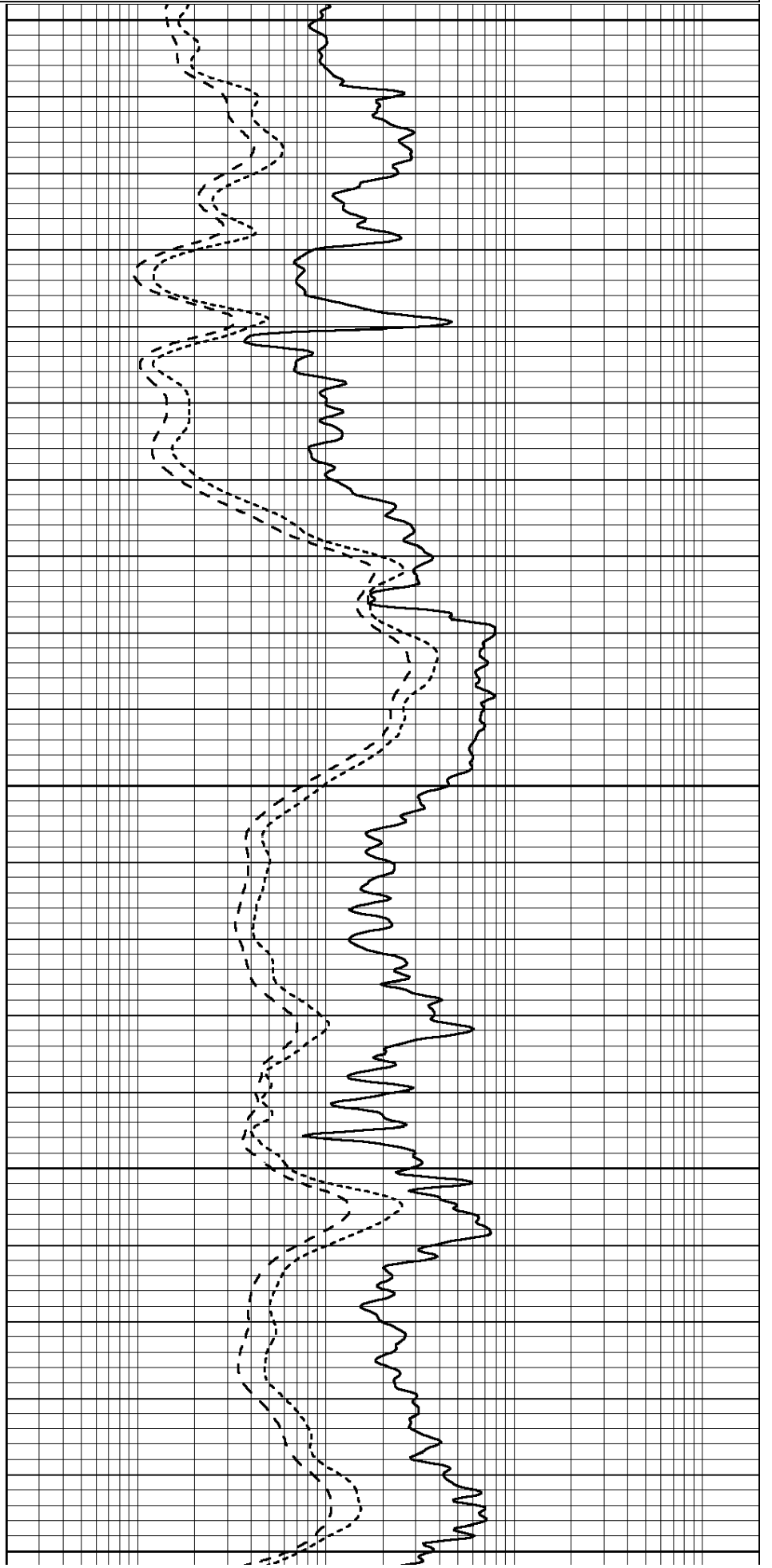
0.2	SHALLOW GUARD (Ohm-m)	2000
0.2	DEEP INDUCTION (Ohm-m)	2000

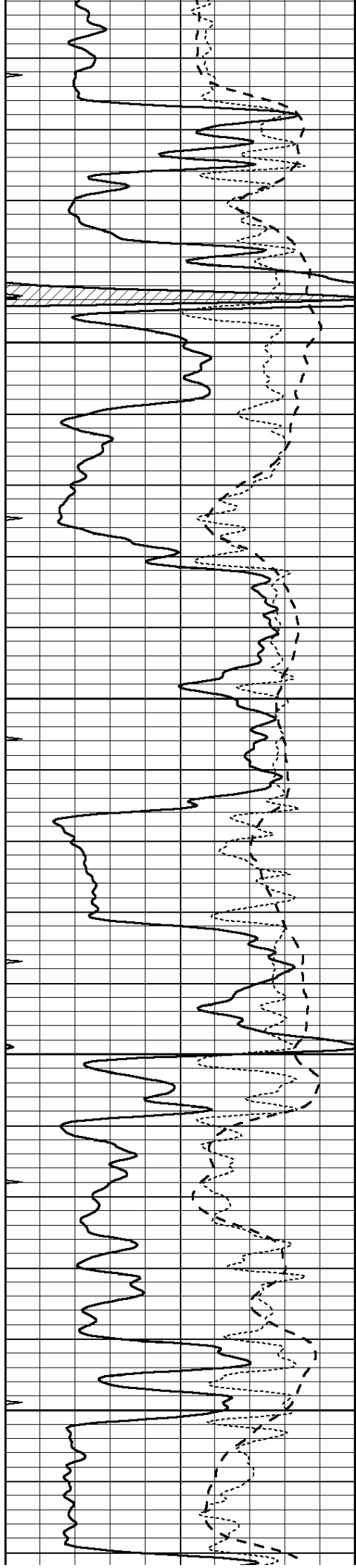
-250	Rxo/Rt	50
0	MINMK	20

0.2      MEDIUM INDUCTION (Ohm-m)      2000



3900  
3950  
4000  
4050  
4100



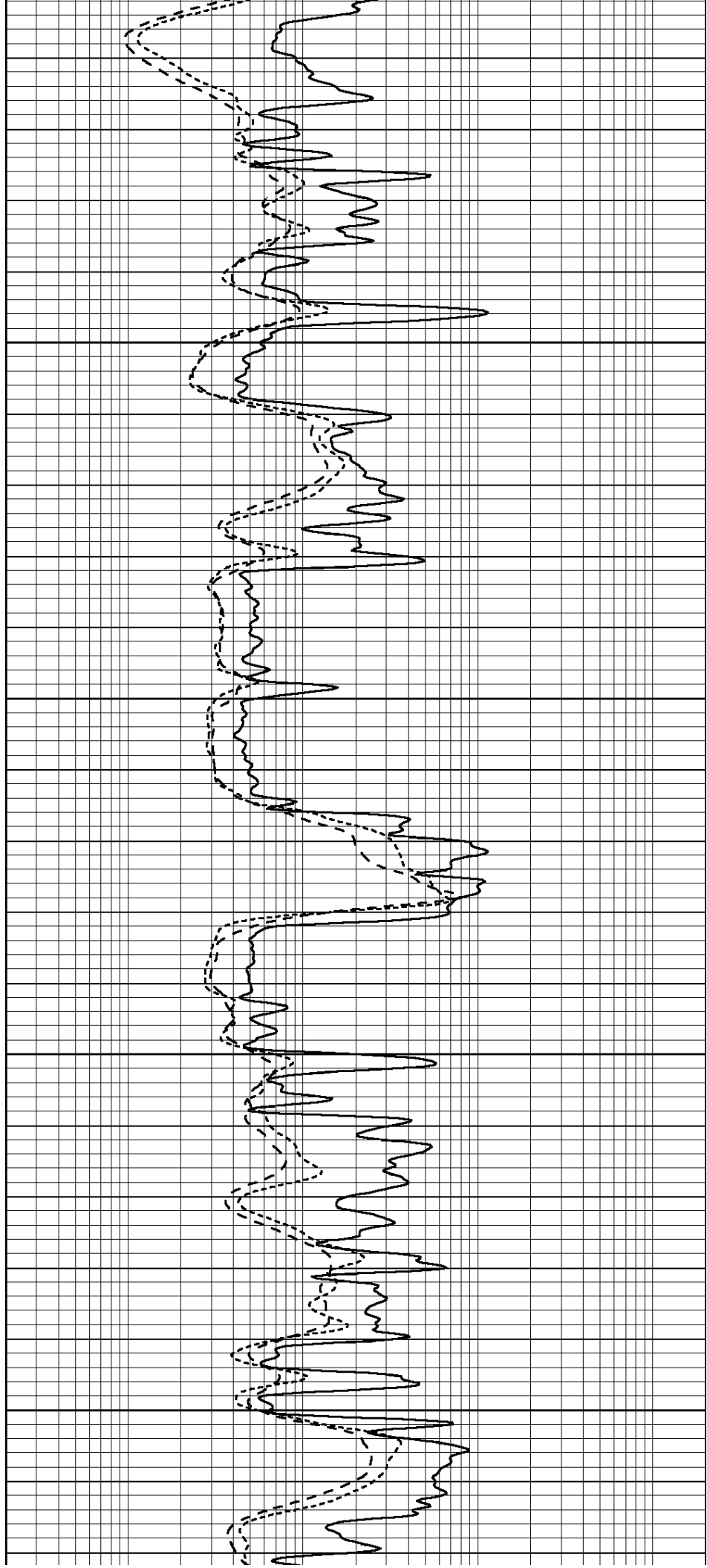


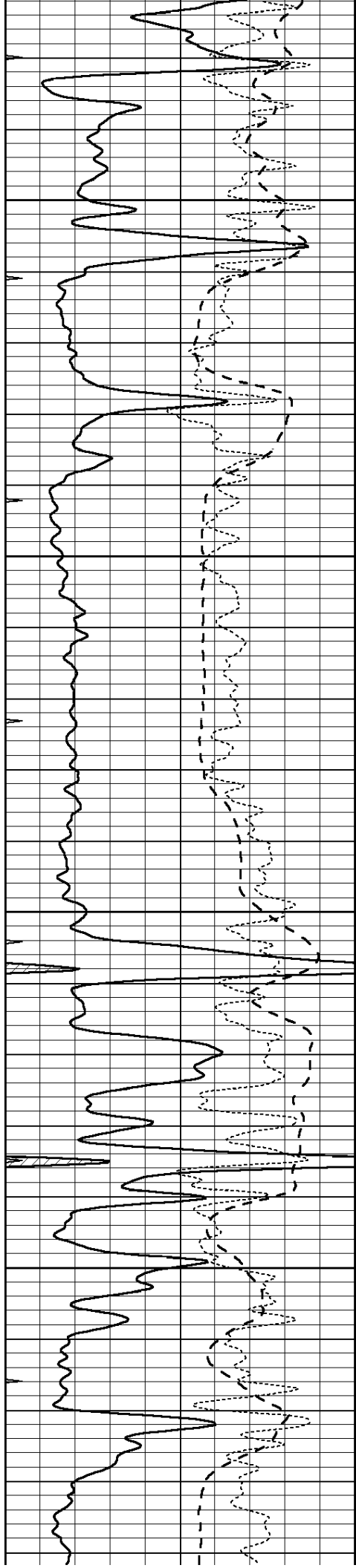
4150

4200

4250

4300



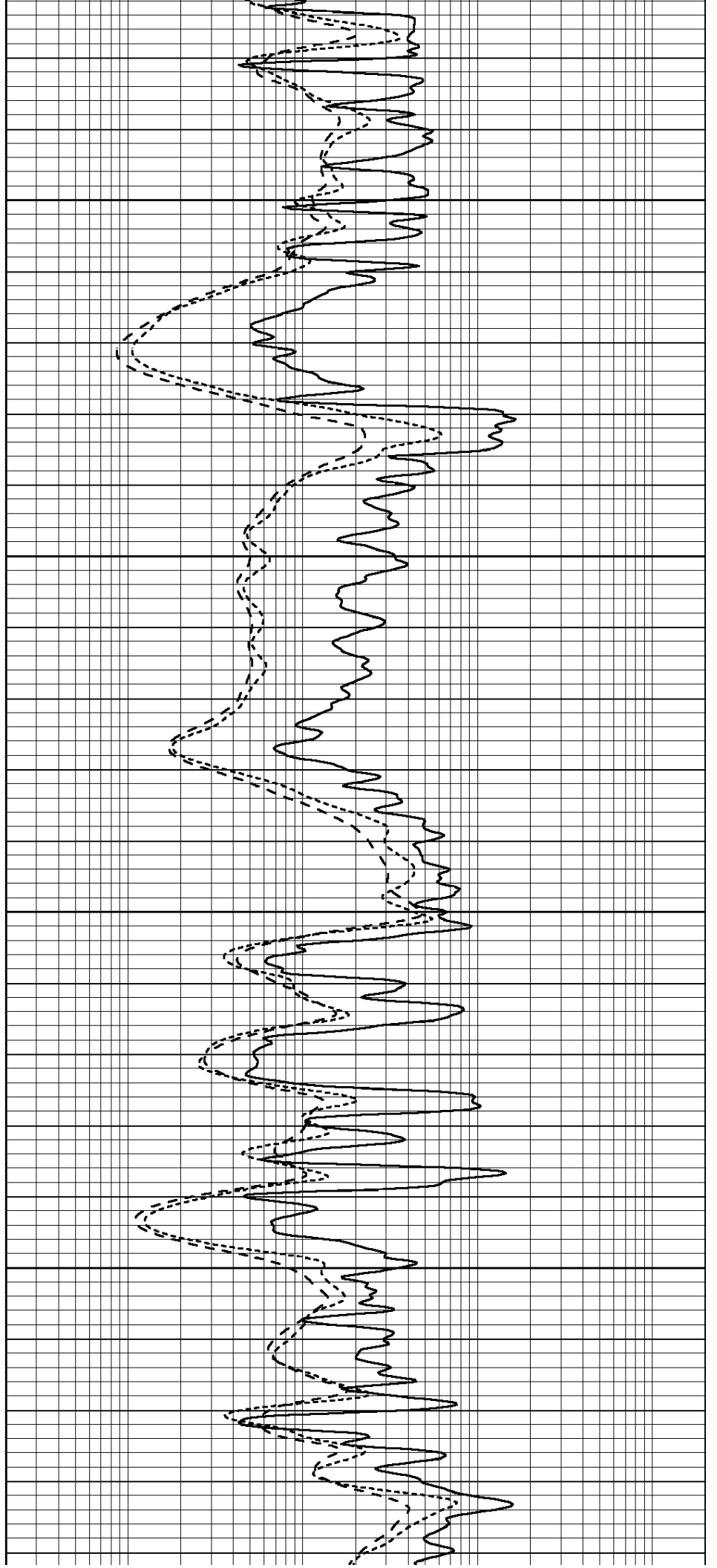


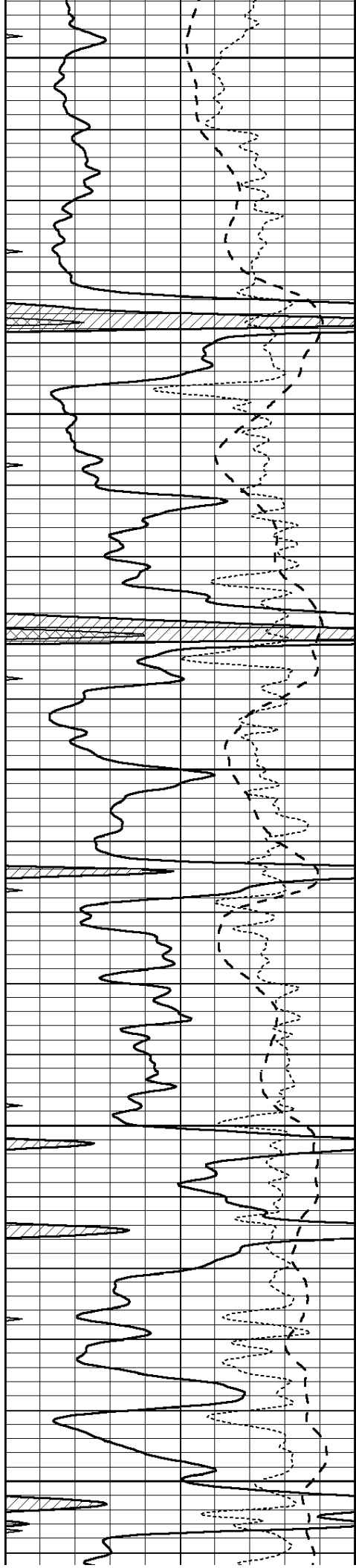
4350

4400

4450

4500





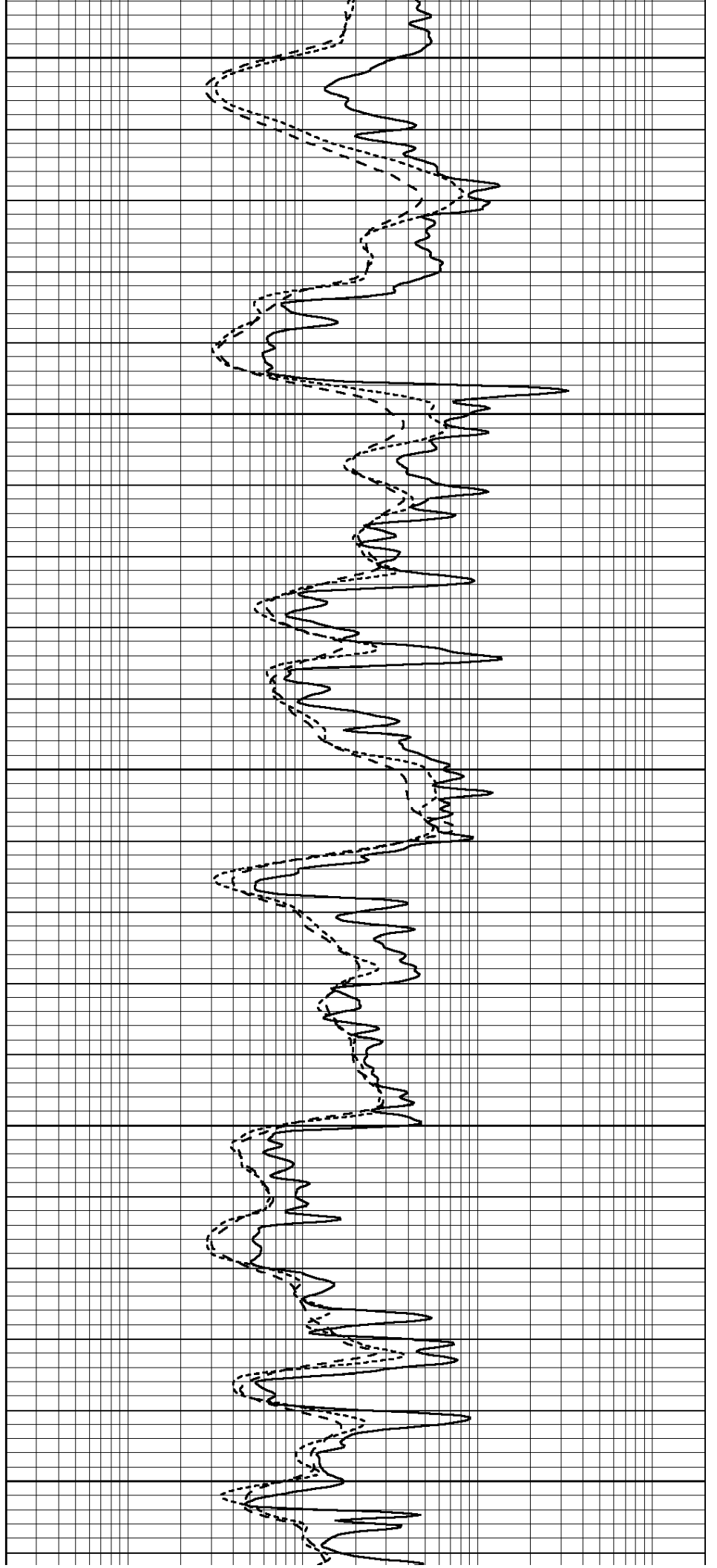
4550

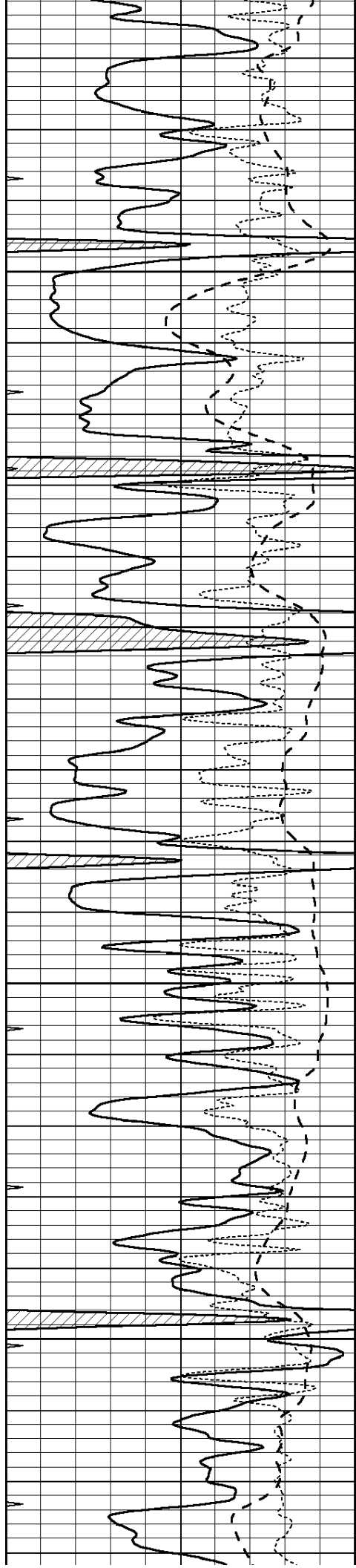
4600

4650

4700

4750



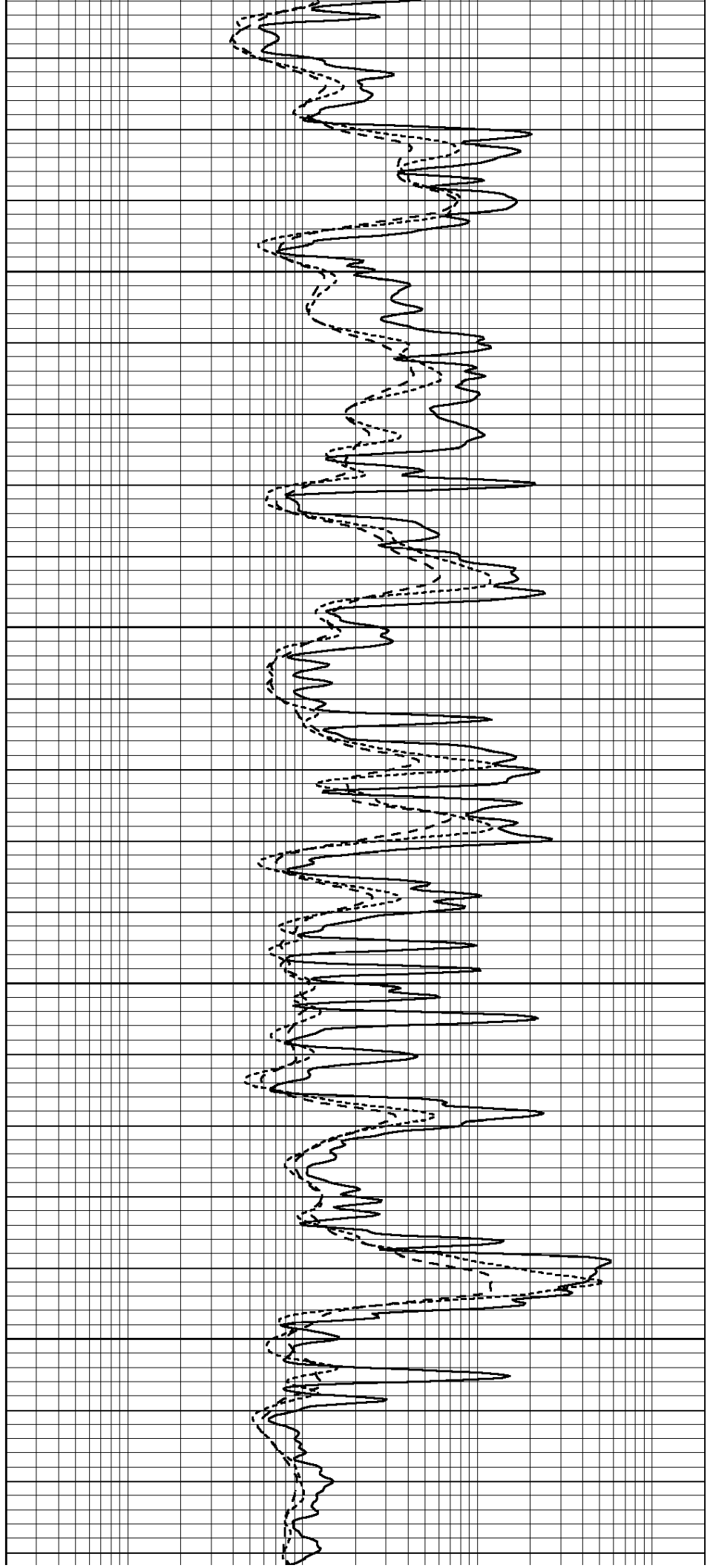


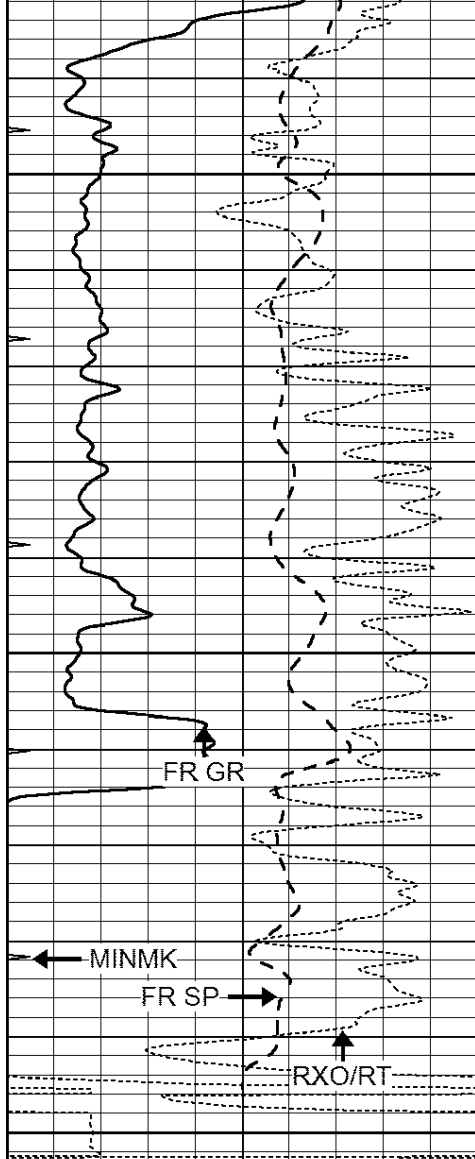
4800

4850

4900

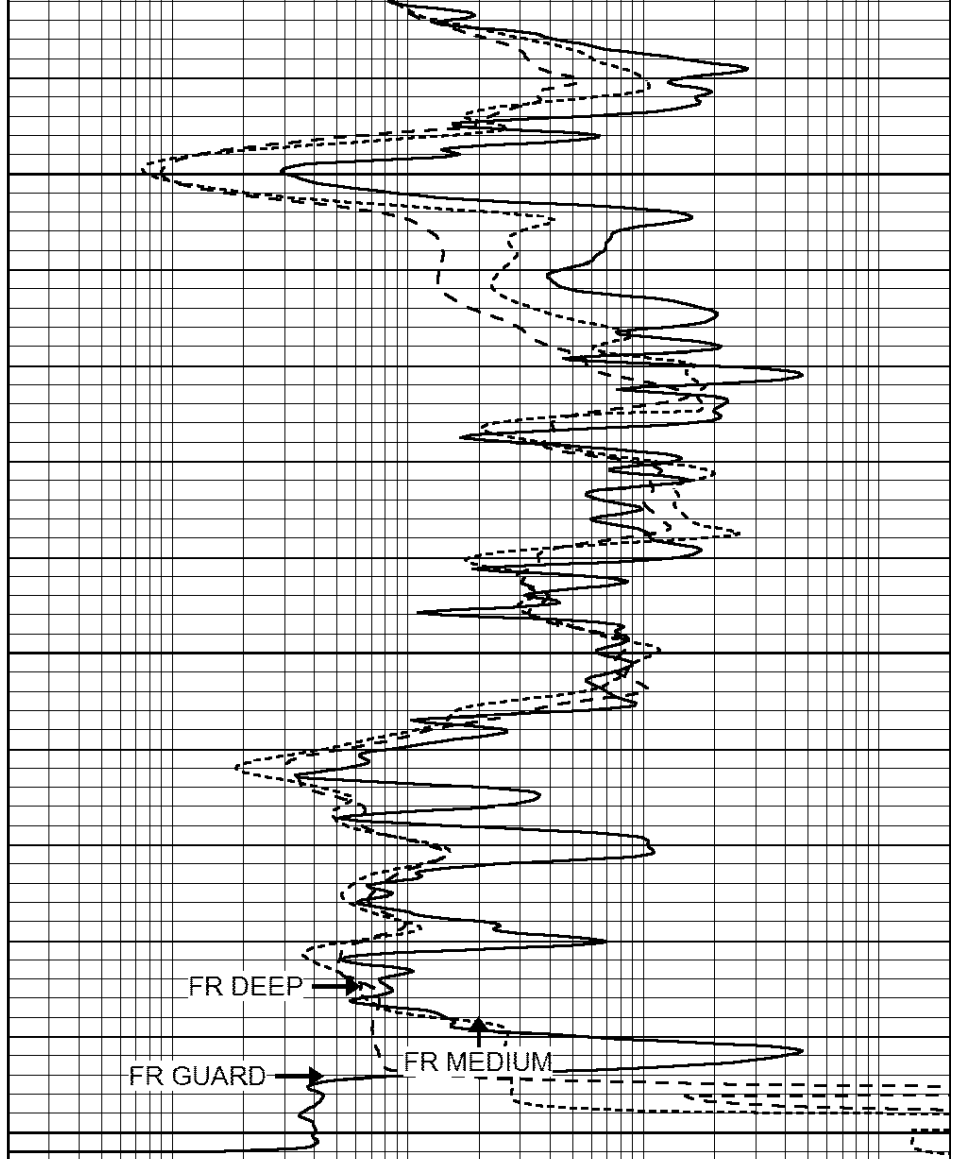
4950





LTD 5096  
5100

0	GAMMA RAY (GAPI)	150
-100	SP (mV)	100
-250	Rxo/Rt	50
0	MINMK	20



0.2	SHALLOW GUARD (Ohm-m)	2000
0.2	DEEP INDUCTION (Ohm-m)	2000
0.2	MEDIUM INDUCTION (Ohm-m)	2000



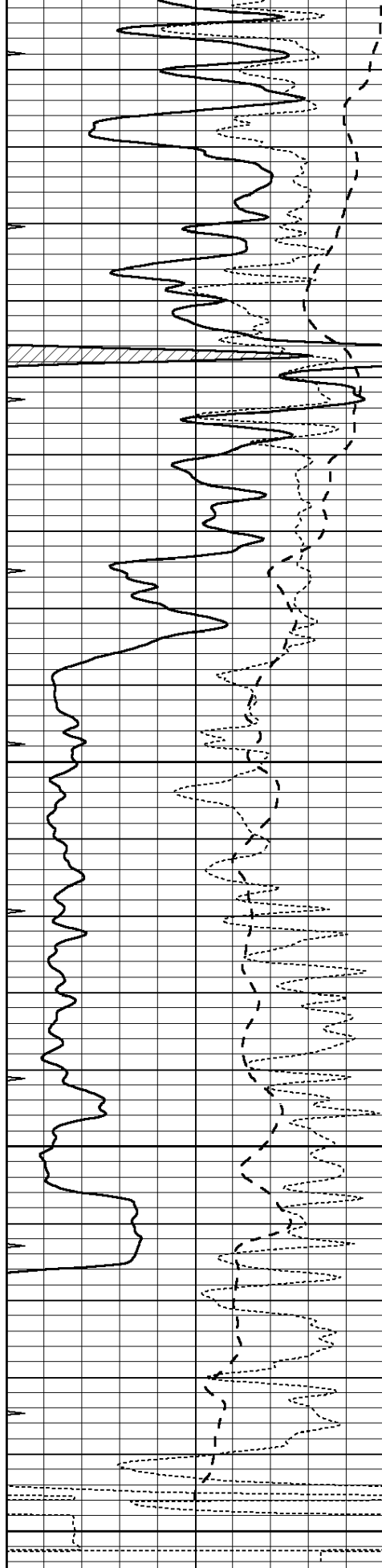
SUPERIOR  
Hays,  
Kansas

# REPEAT SECTION

Database File: 408775pe.db  
 Dataset Pathname: pass2.5  
 Presentation Format: dil  
 Dataset Creation: Wed May 23 02:39:05 2012  
 Charted by: Depth in Feet scaled 1:240

0	GAMMA RAY (GAPI)	150
-100	SP (mV)	100
-250	Rxo/Rt	50
0	MINMK	20

0.2	SHALLOW GUARD (Ohm-m)	2000
0.2	DEEP INDUCTION (Ohm-m)	2000
0.2	MEDIUM INDUCTION (Ohm-m)	2000



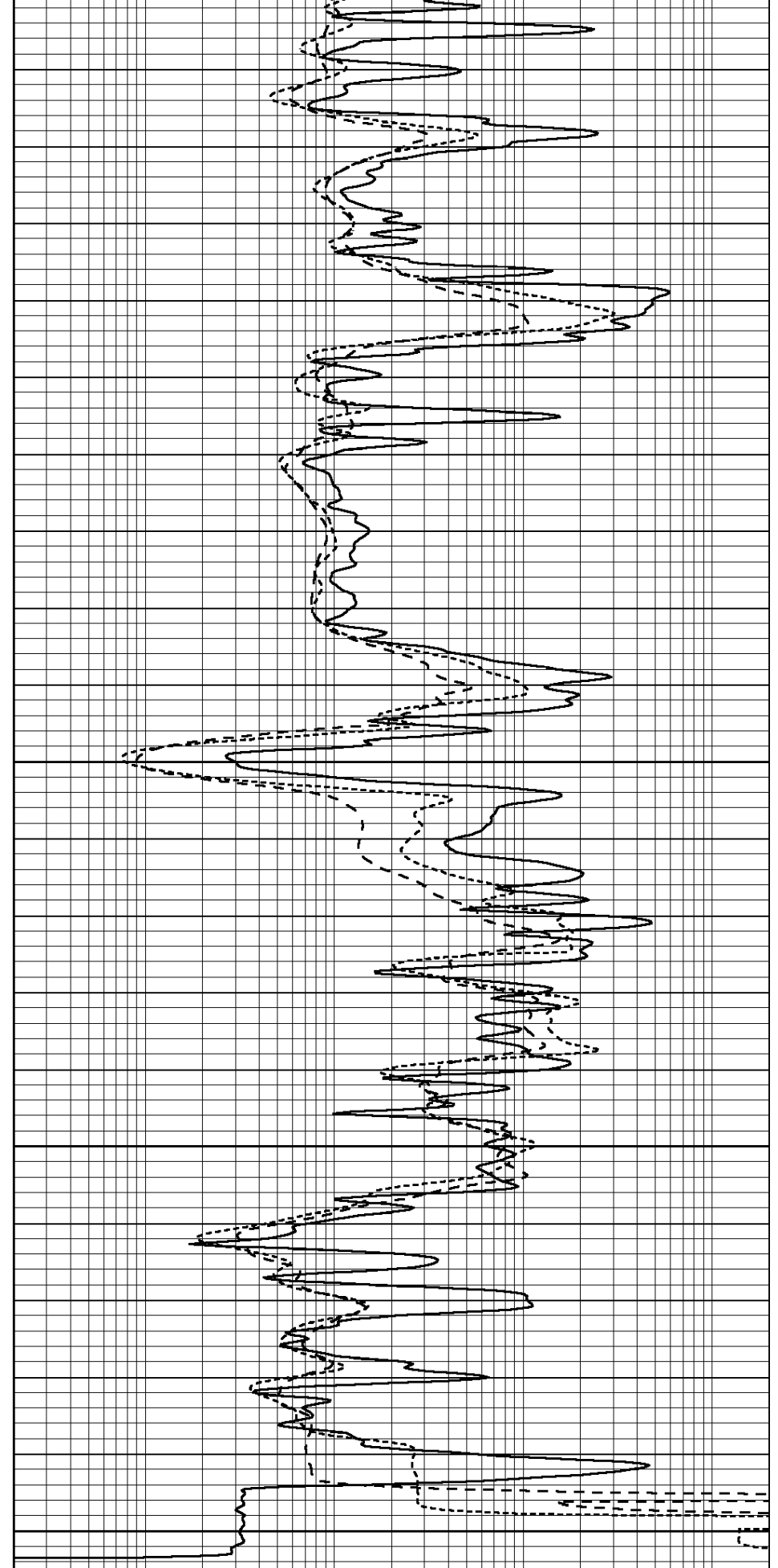
4950

5000

5050

5100

0	GAMMA RAY (GAPI)	150
-100	SP (mV)	100
-250	Rxo/Rt	50



0.2	SHALLOW GUARD (Ohm-m)	2000
0.2	DEEP INDUCTION (Ohm-m)	2000
0.2	MEDIUM INDUCTION (Ohm-m)	2000

Calibration Report

Database File: 408775pe.db  
 Dataset Pathname: pass3.5  
 Dataset Creation: Wed May 23 03:56:59 2012

Dual Induction Calibration Report

Serial-Model: DIL4-GEAR  
 Performed: Wed May 23 02:30:26 2012

Loop:	Readings			References			Results	
	Air	Loop		Air	Loop		m	b
Deep	0.008	0.666	V	0.000	400.000	mmho/m	570.000	-8.000
Medium	-0.003	0.769	V	0.000	462.500	mmho/m	560.000	-7.000
Internal:	Zero	Cal		Zero	Cal		m	b
Deep	0.013	0.651	V	0.000	400.000	mmho/m	627.541	-8.365
Medium	0.020	0.754	V	0.000	462.500	mmho/m	630.311	-12.549

Litho Density Calibration Report  
 Serial: 006 Model: PRB  
 Performed Sun Aug 15 09:48:41 2010

Litho Density Calibration

	Background	Magnesium	Aluminum	Sandstone	
Window 1	1686.6	11612.8	3932.0	12718.8	cps
Window 2	1531.4	9204.7	3267.8	9851.9	cps
Window 3	1198.3	4733.6	1952.5	4920.6	cps
Window 4	317.3	321.2	325.9	303.6	cps
Long Space	0.0	7673.3	1736.4	8320.4	cps
Short Space	1.7	2548.5	1657.2	2628.8	cps
Rho		1.7100	2.5900	1.3800	g/cc
Pe			2.5700	1.5500	
Rib Angle	: 43.8	Rib Slope	: 0.961	Density/Spine Ratio	: 0.569
Spine Angle	: 73.8	Spine Slope	: 3.453	Spine Intercept	: -18.1

Caliper

	Readings	Reference
Low Ref	4.0	8.4
High Ref	5.9	15.0
	Gain: 3.4	Offset: -5.2

Compensated Neutron Calibration Report

Serial Number: 070808  
 Tool Model: Probe

PRE-SURVEY VERIFICATION

Detector	Readings	Measured	Target
Short Space	cps		
Long Space	cps	pu	pu

POST-SURVEY VERIFICATION

Detector	Readings	Measured	Target
----------	----------	----------	--------

Short Space  
Long Space

cps  
cps

pu

pu

Gamma Ray Calibration Report

Serial Number: 070559  
Tool Model: OPEN\_GR  
Performed: Tue May 22 19:38:45 2012

Calibrator Value: 1.0 GAPI

Background Reading: 0.0 cps  
Calibrator Reading: 1.0 cps

Sensitivity: 0.3000 GAPI/cps