



**SUPERIOR  
Hays,  
Kansas**

**RADIATION  
GUARD LOG**

Company MICHAEL D. WEILERT OIL COMPANY  
Well VELEY-RIEDEL #2  
Field IRVIN  
County ELLIS  
State KANSAS

Company MICHAEL D. WEILERT OIL COMPANY  
Well VELEY-RIEDEL #2  
Field IRVIN  
County ELLIS State KANSAS

Location: API #: 15-051-26242-0000  
3266' FSL & 735' FEL  
NE - SW - SE - NE  
SEC 7 TWP 14S RGE 19W  
Permanent Datum GROUND LEVEL Elevation  
Log Measured From KELLY BUSHING 5' A.G.L.  
Drilling Measured From KELLY BUSHING  
Other Services  
MEL  
Elevation  
K.B.  
D.F.  
G.L.

Date	5-15-12		
Run Number	ONE		
Depth Driller	3864		
Depth Logger	3865		
Bottom Logged Interval	3864		
Top Log Interval	3000		
Casing Driller	214		
Casing Logger	212		
Bit Size	7.875		
Type Fluid in Hole	CHEMICAL MUD		
Density / Viscosity	9.4 / 56	CHLORIDES 8.000	
pH / Fluid Loss	10.0 / 8.0		
Source of Sample	FLOWLINE		
Rm @ Meas. Temp	0.50 @ 96F		
Rmf @ Meas. Temp	0.38 @ 96F		
Rmc @ Meas. Temp	0.60 @ 96F		
Source of Rmf / Rmc	MEASURED		
Rm @ BHT	0.42 @ 115F		
Time Circulation Stopped	2 HOURS		
Time Logger on Bottom			
Maximum Recorded Temperature	115F		
Equipment Number	860		
Location	HAYS, KS.		
Recorded By	JEFF GRONEWEG		
Witnessed By	MIKE WEILERT		

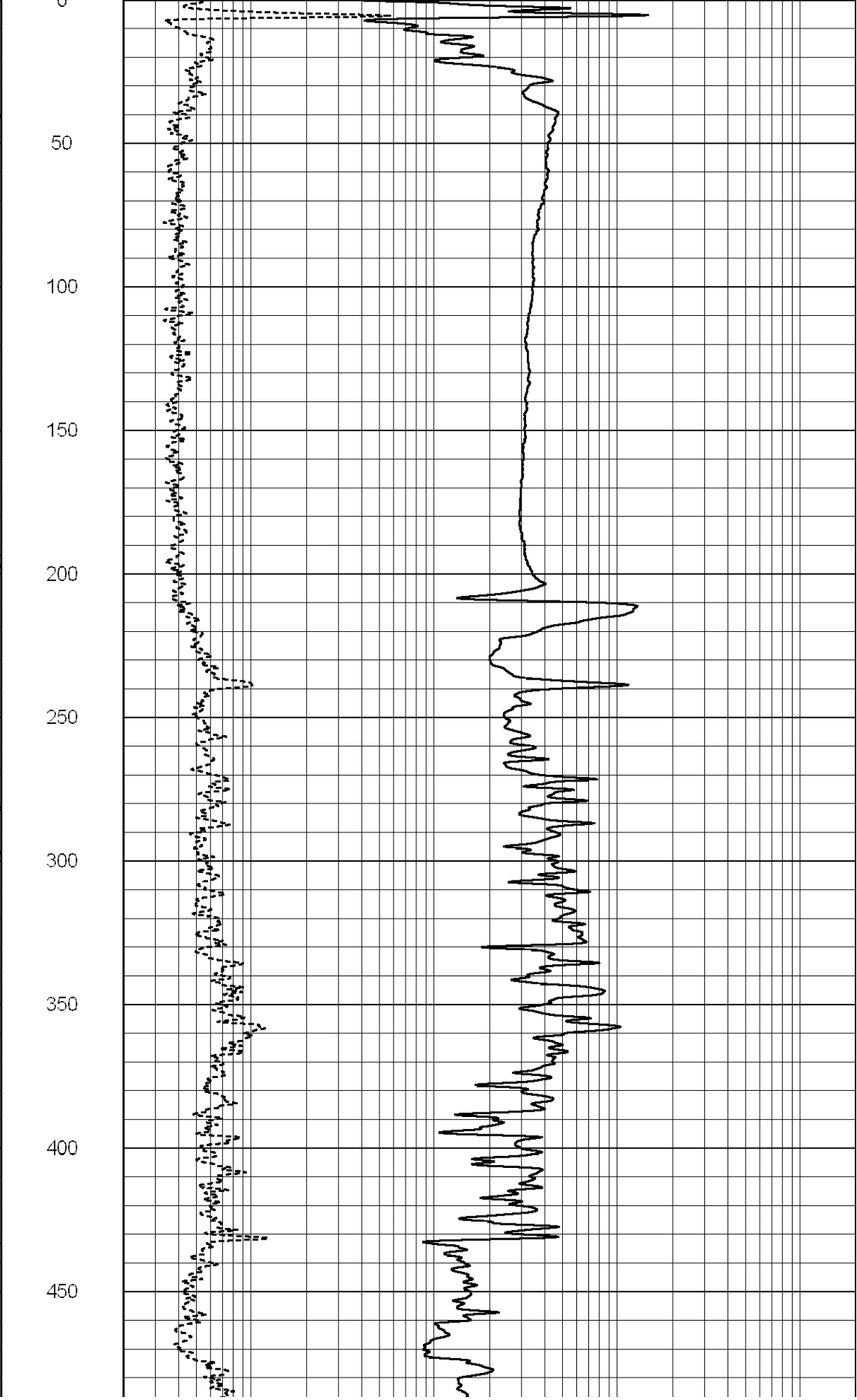
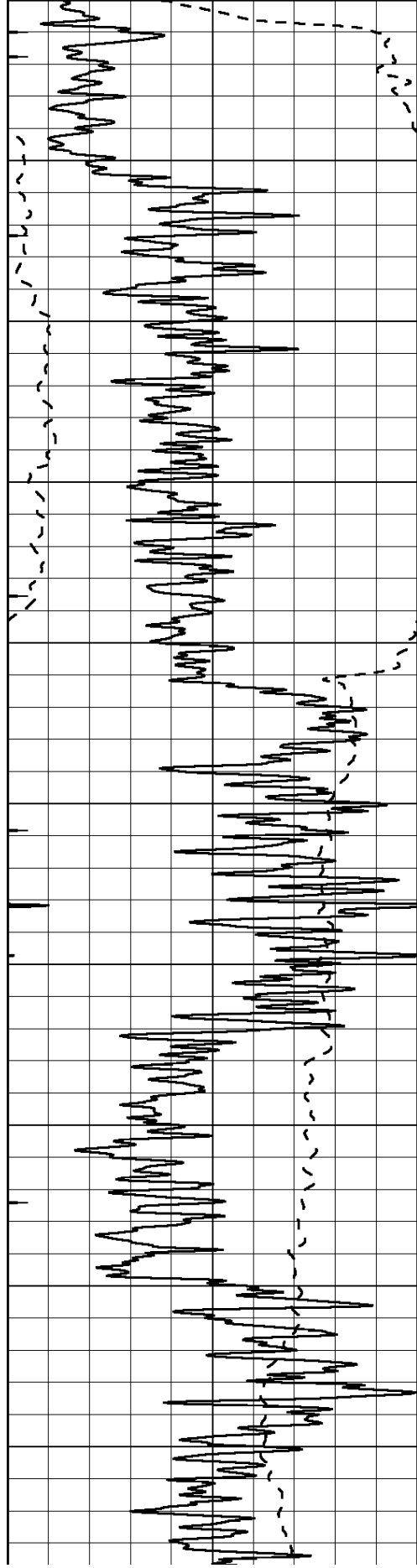
<<< Fold Here >>>

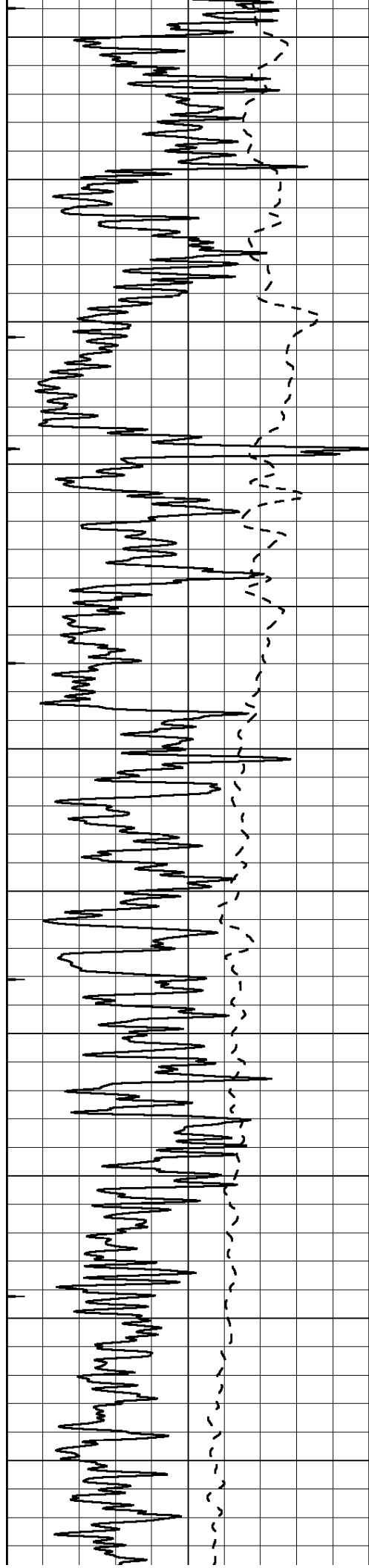
All interpretations are opinions based on inferences from electrical or other measurements and we cannot and do not guarantee the accuracy or correctness of any interpretation, and we shall not, except in the case of gross or willful negligence on our part, be liable or responsible for any loss, costs, damages, or expenses incurred or sustained by anyone resulting from any interpretation made by any of our officers, agents or employees. These interpretations are also subject to our general terms and conditions set out in our current Price Schedule.

Comments

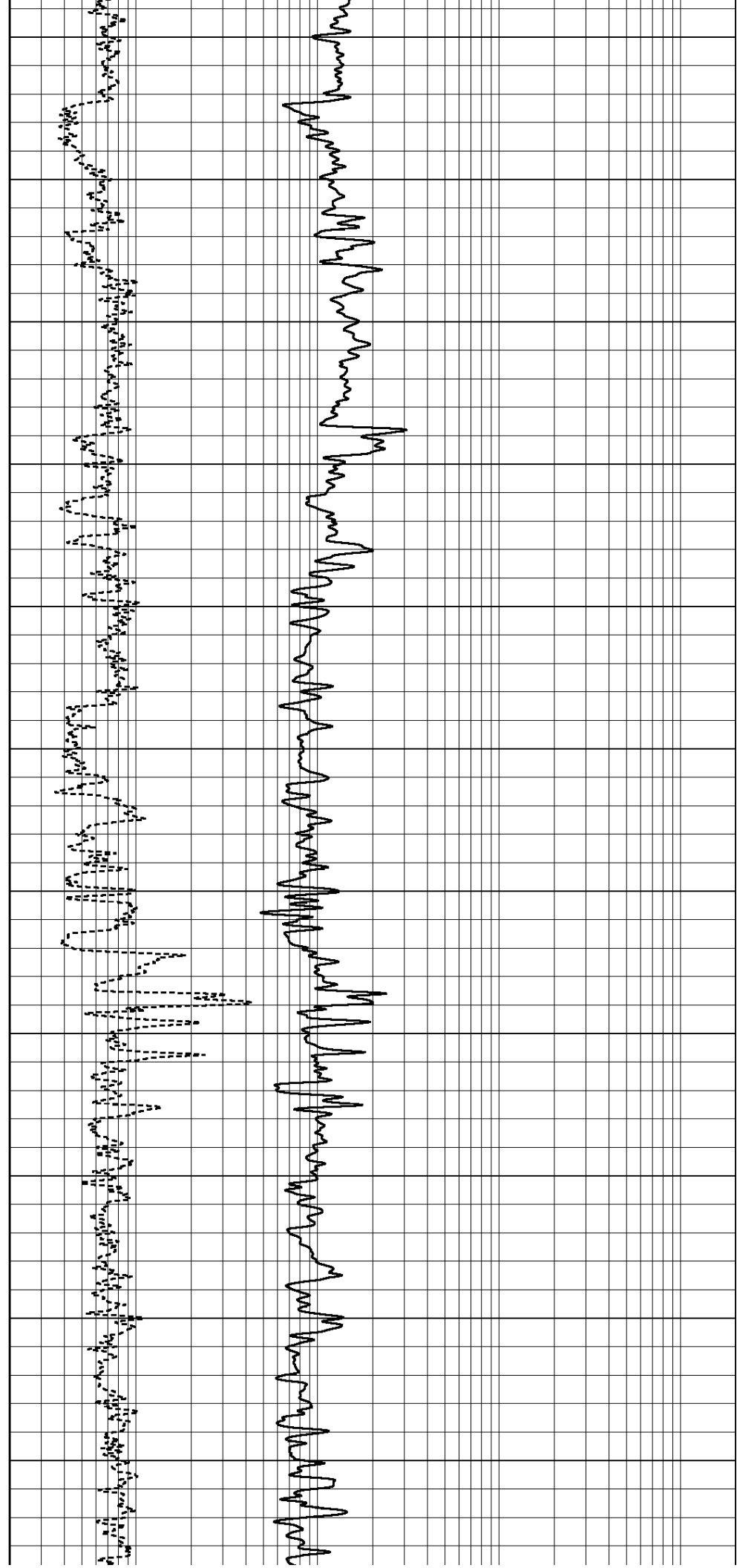
**SUPERIOR WELL SERVICES**  
 785-628-6395  
 THANK YOU FOR YOUR BUSINESS  
 DIRECTIONS: YOCEMENTO, KS - NORTH TO GOLF COURSE RD  
 2 MILES WEST - 1/4 MILE SOUTH - WEST INTO

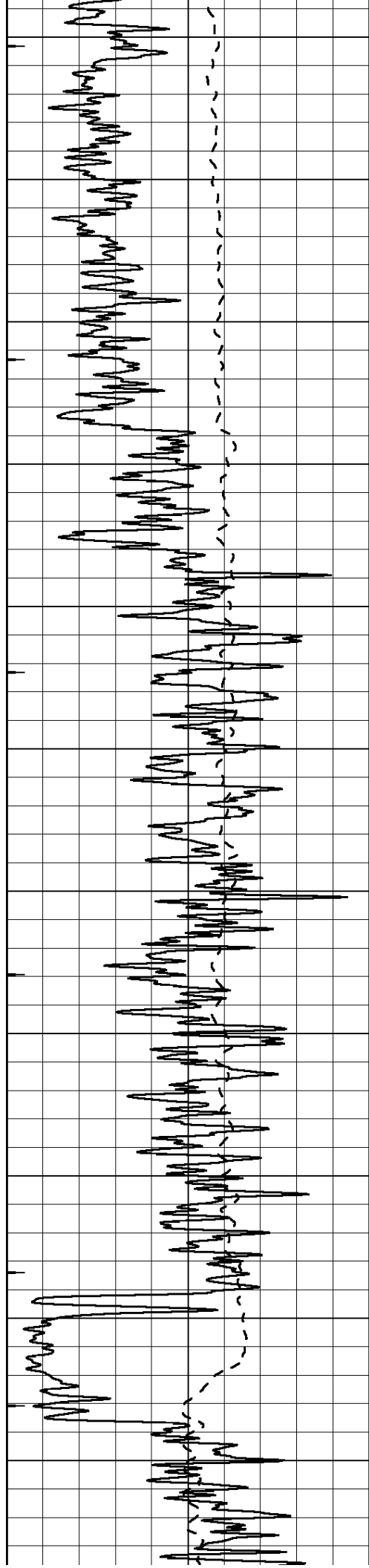
0	GAMMA RAY (GAPI)	150	ABHV (ft3)	0.2	GUARD (Ohm-m)	2000
-100	SP (mV)	100	TBHV (ft3)	0	NEUTRON (NAPI)	1000



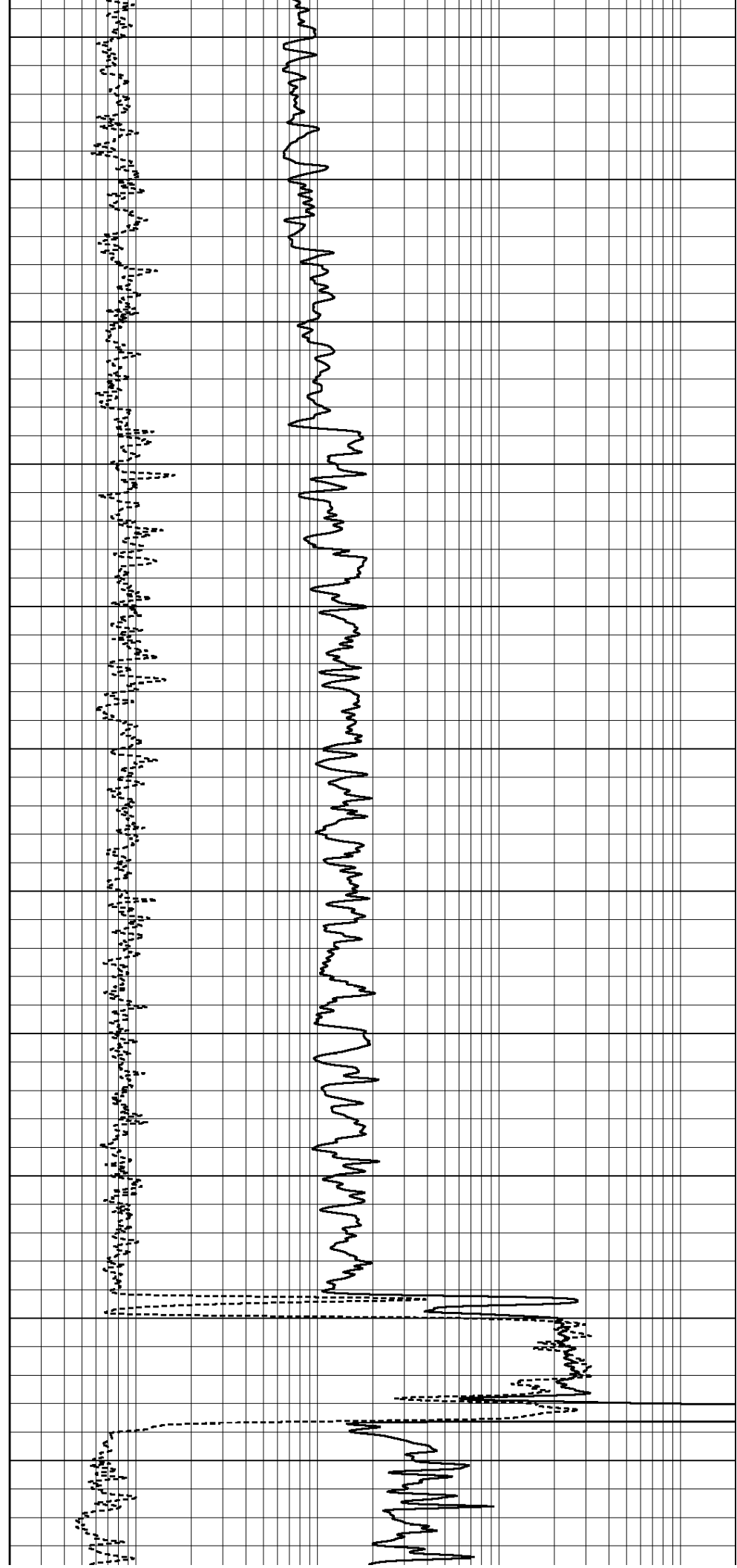


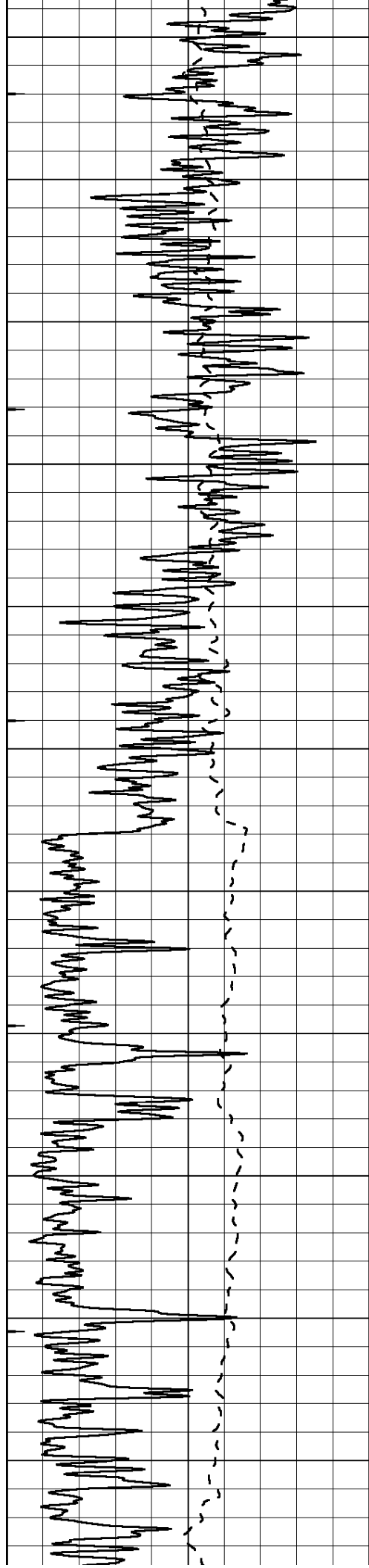
500  
550  
600  
650  
700  
750  
800  
850  
900  
950  
1000





1050  
1100  
1150  
1200  
1250  
1300  
1350  
1400  
1450  
1500  
1550





1600

1650

1700

1750

1800

1850

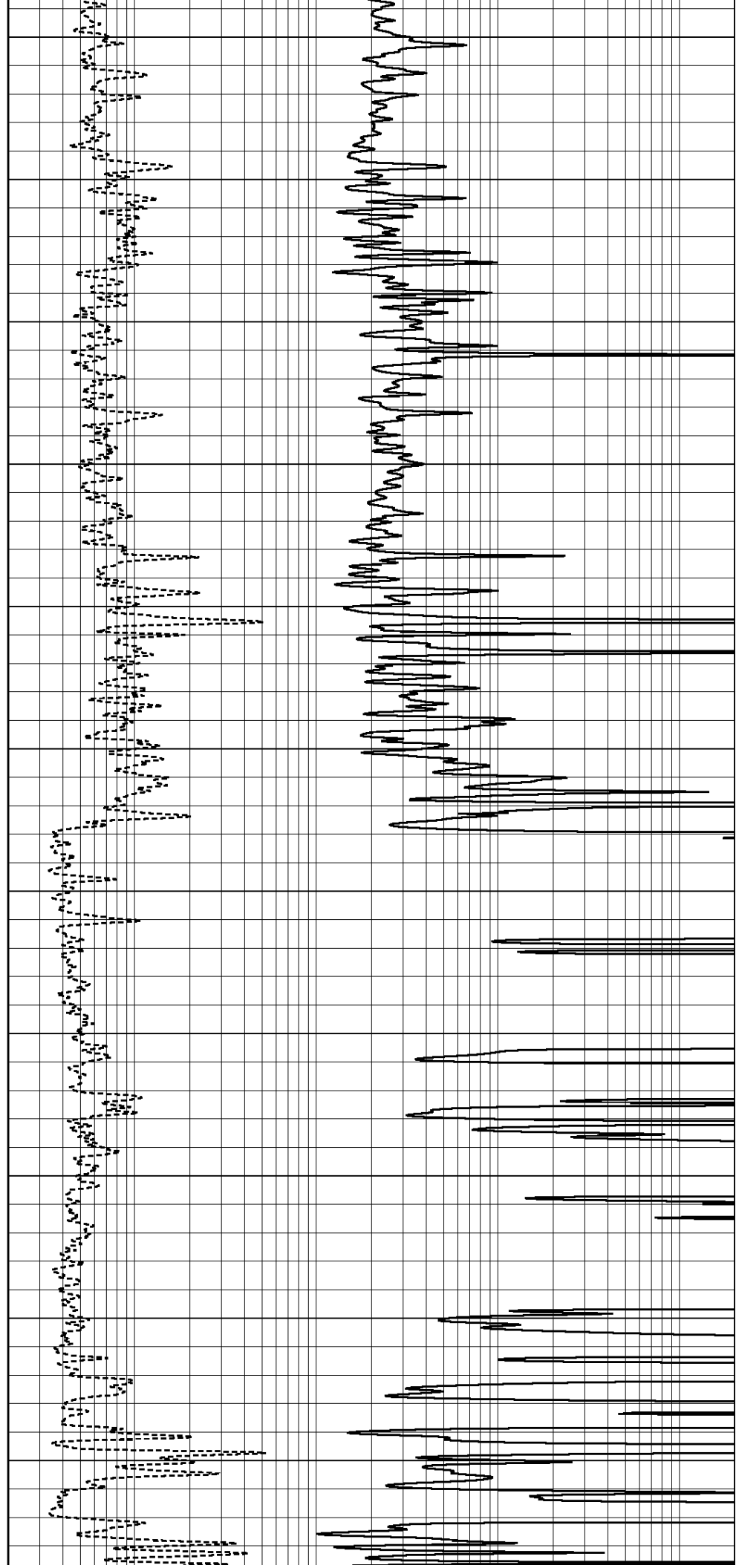
1900

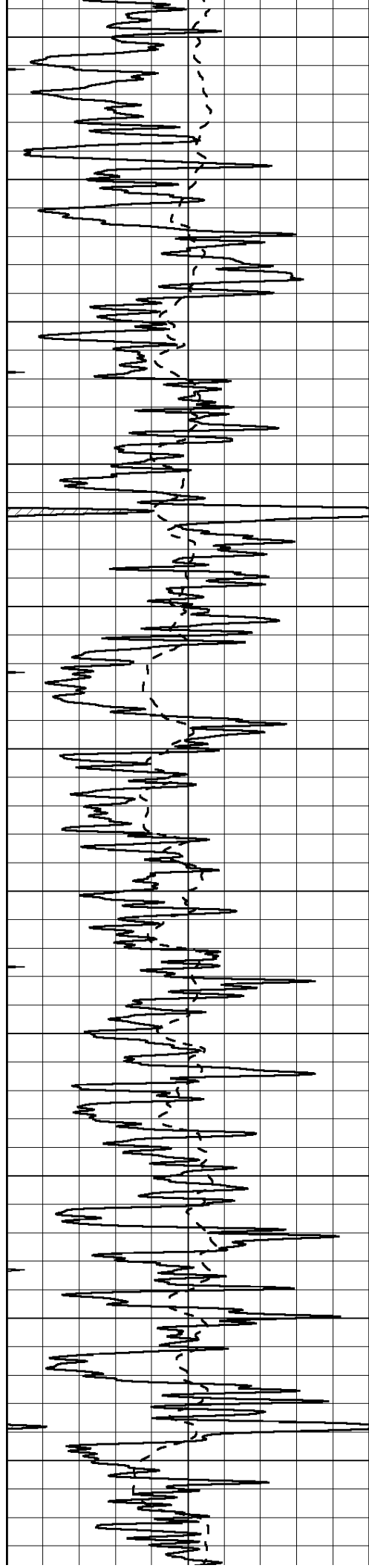
1950

2000

2050

2100





2150

2200

2250

2300

2350

2400

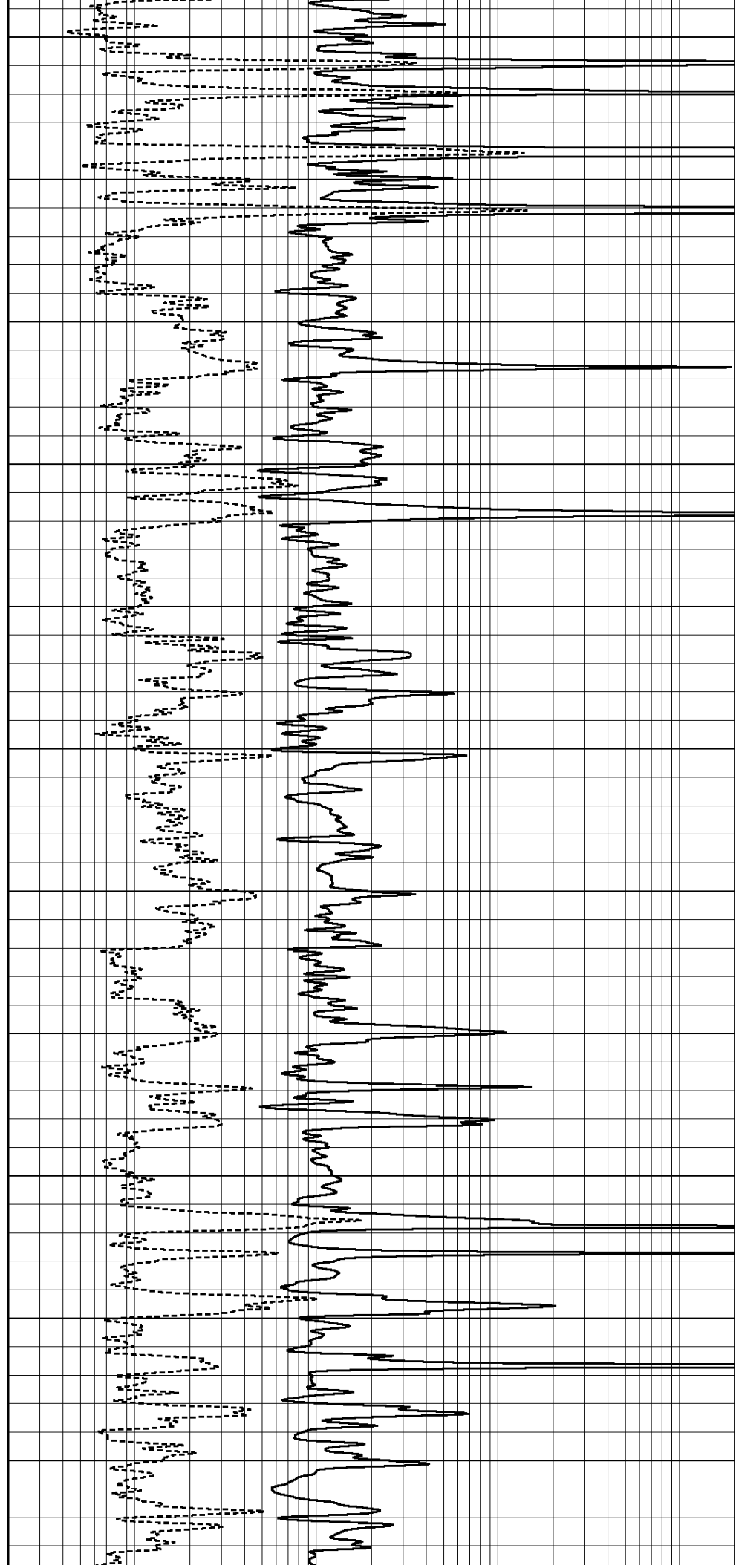
2450

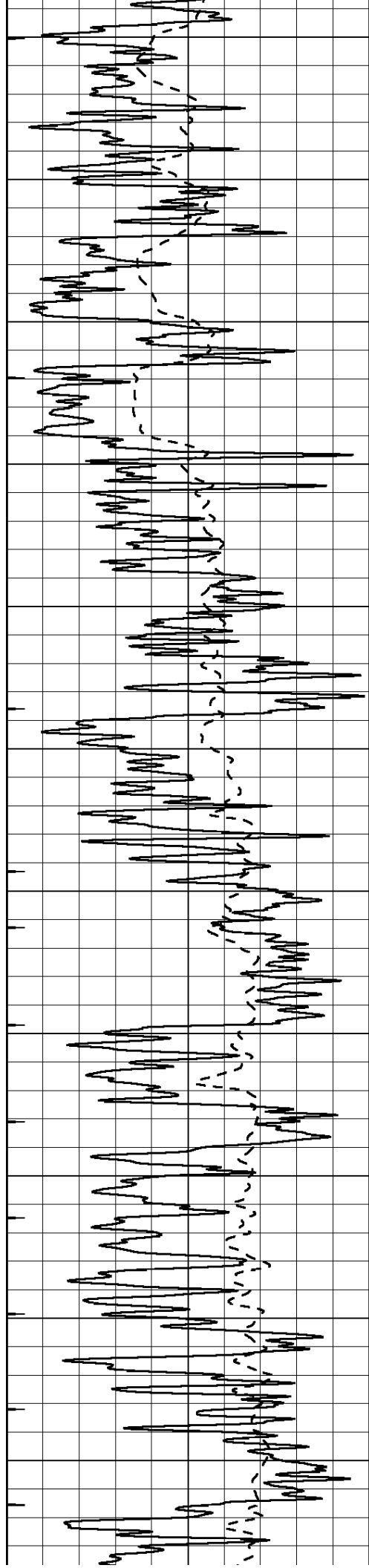
2500

2550

2600

2650





2700

2750

2800

2850

2900

2950

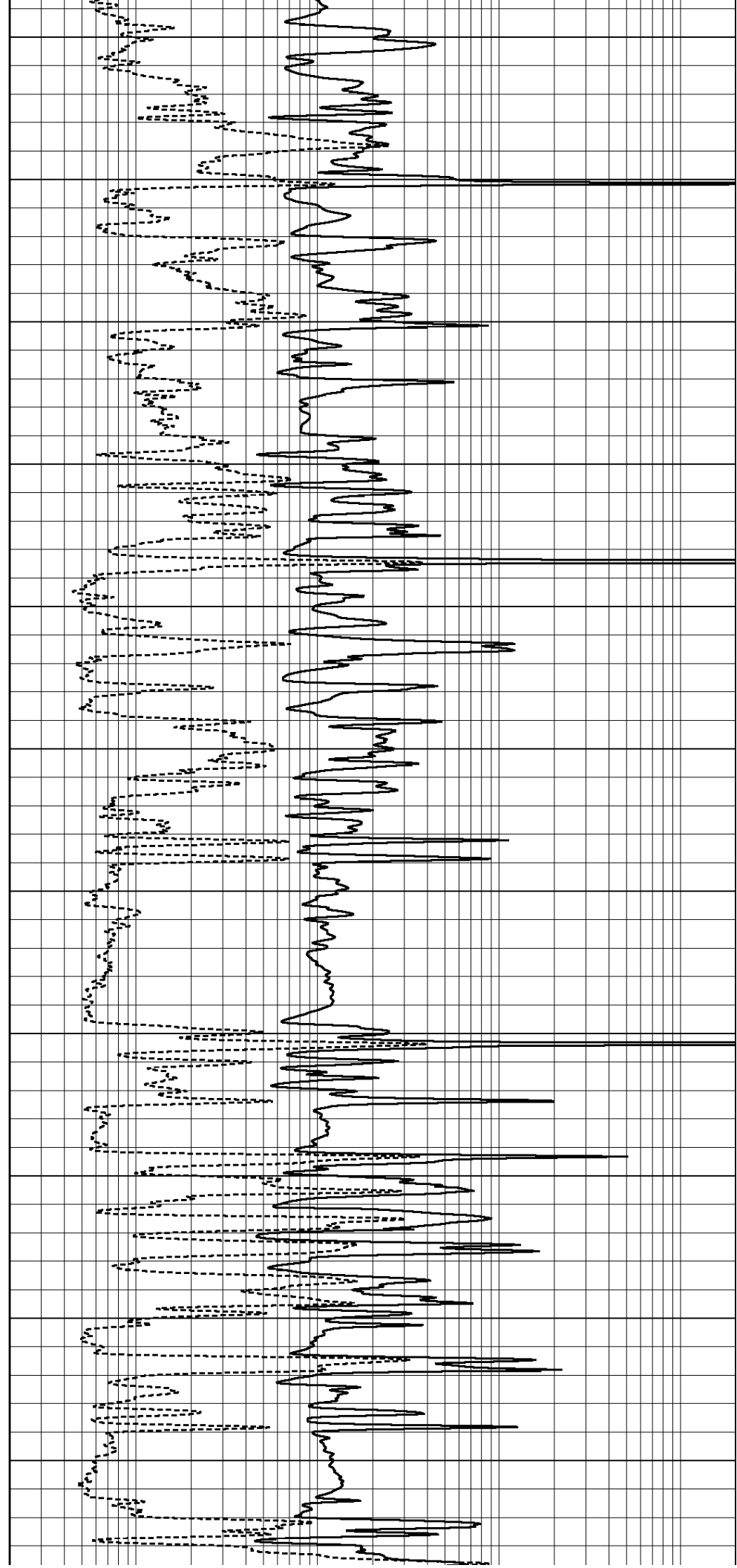
3000

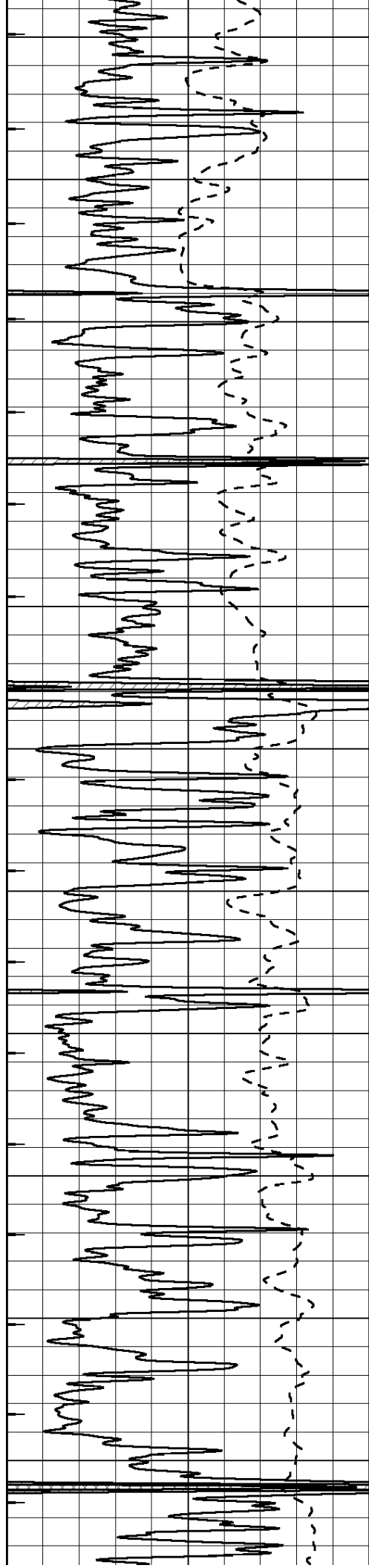
3050

3100

3150

3200





3250

3300

3350

3400

3450

3500

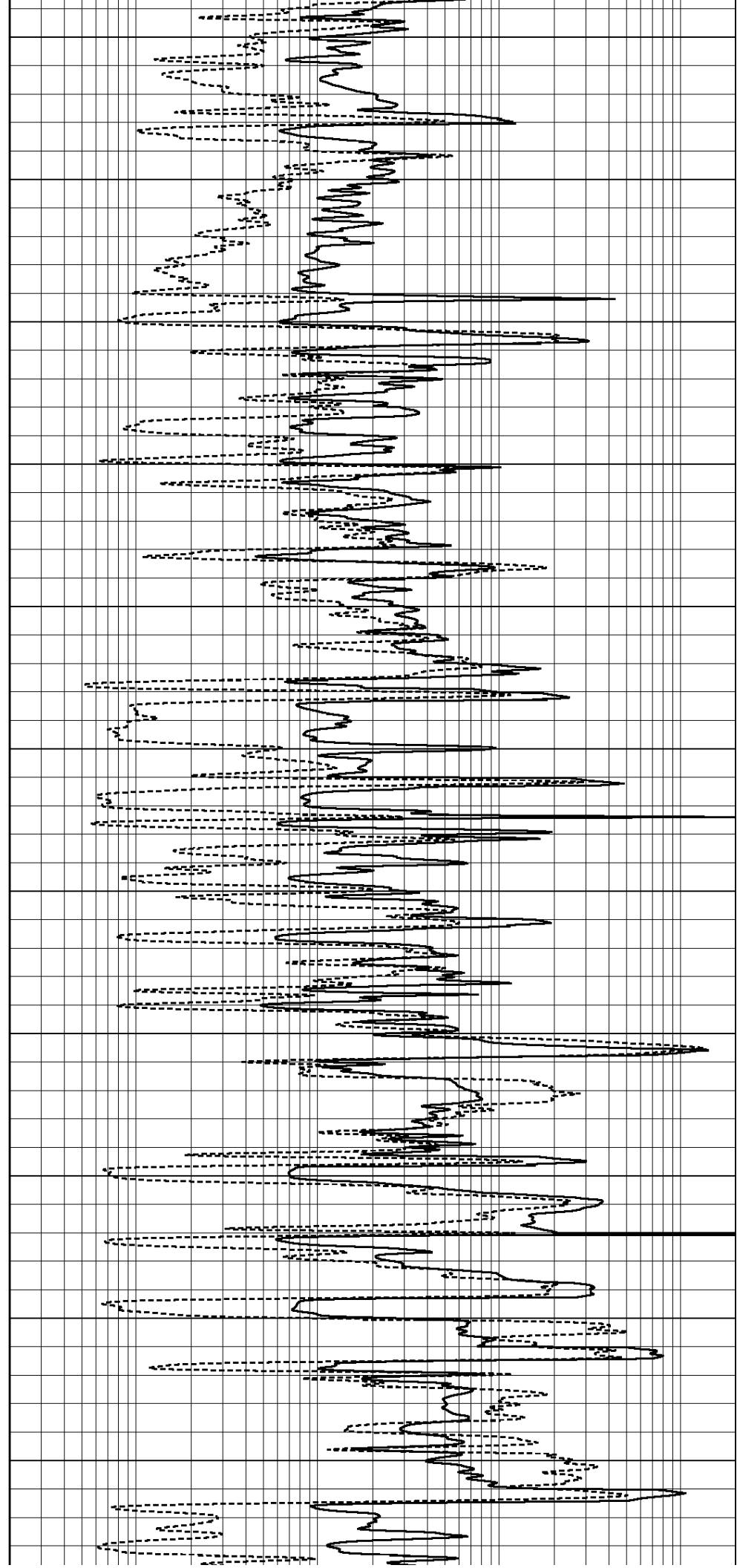
3550

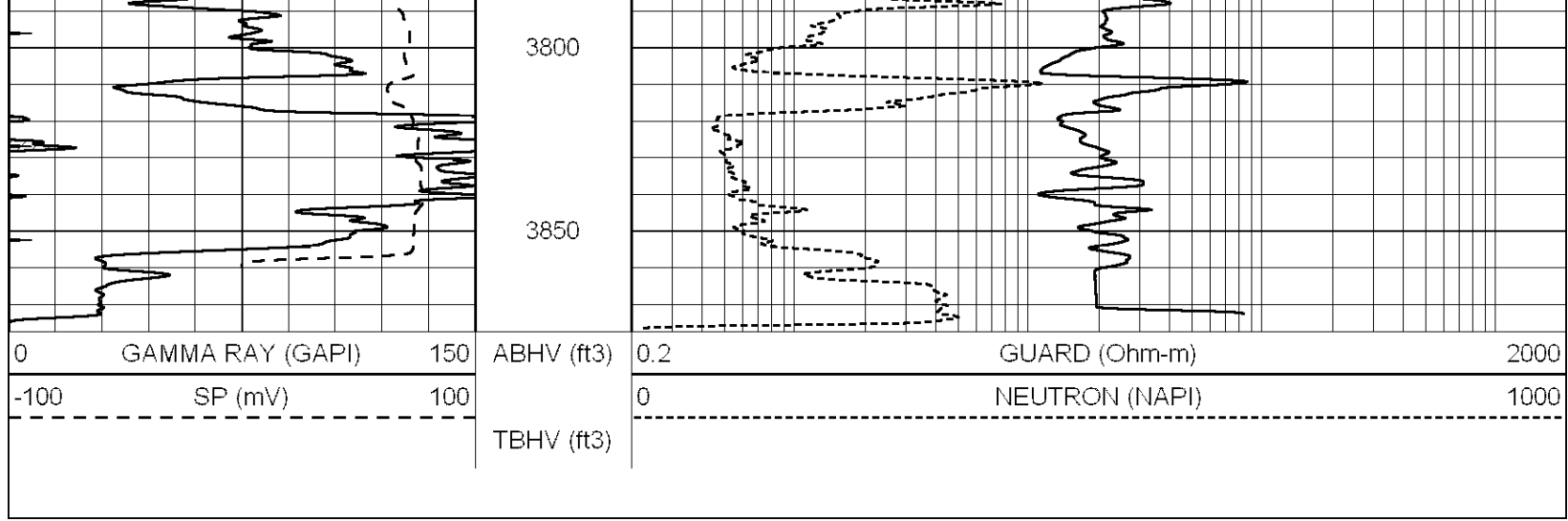
3600

3650

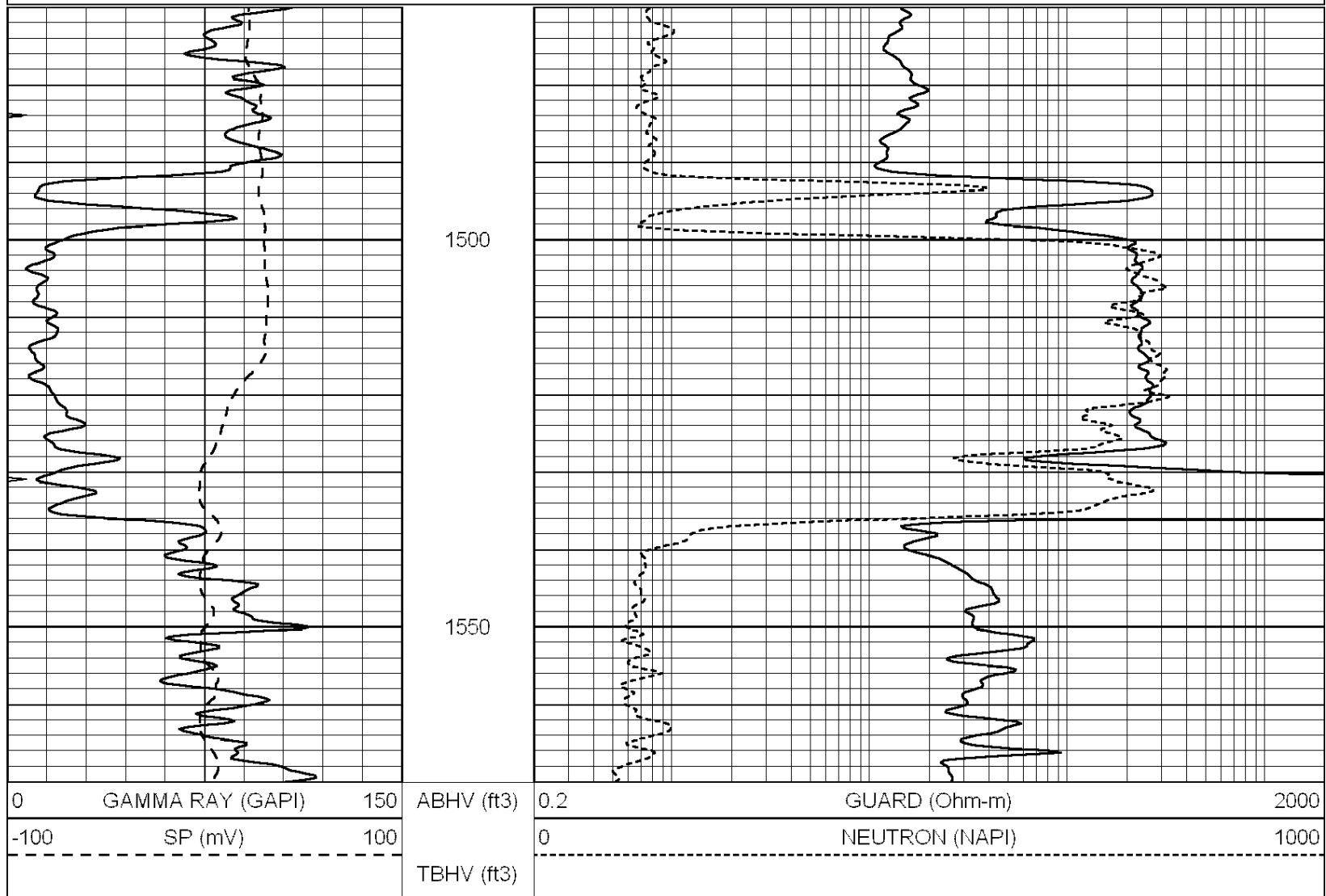
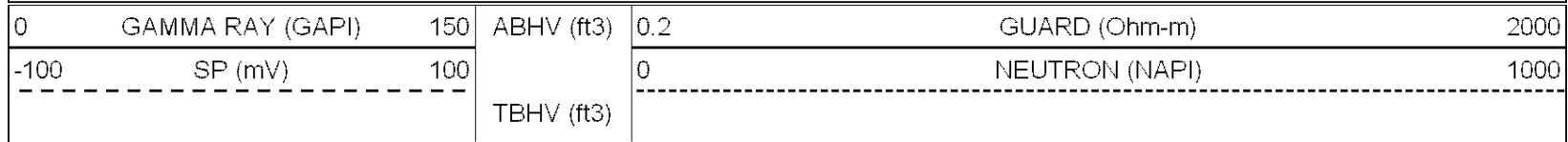
3700

3750



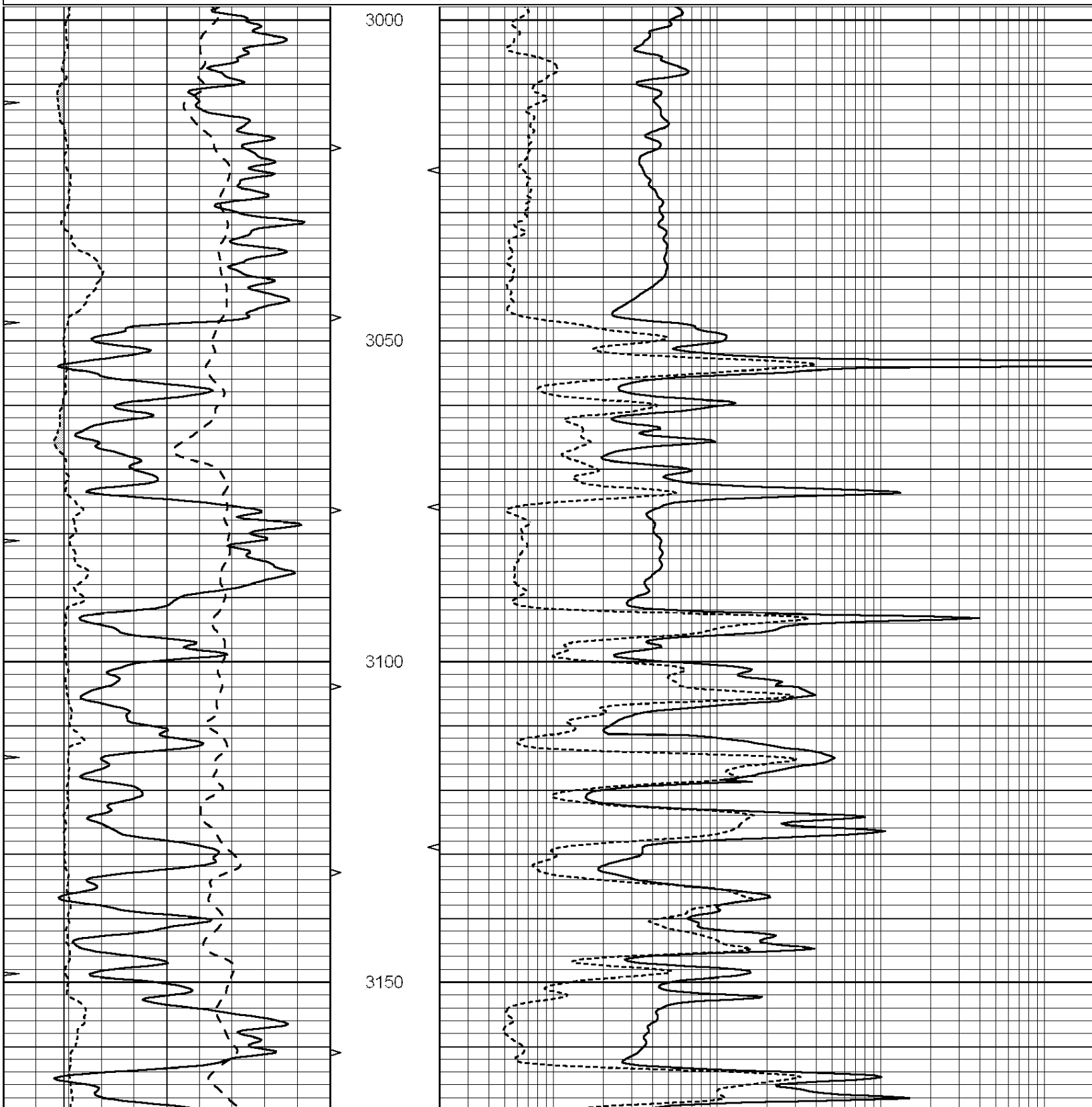


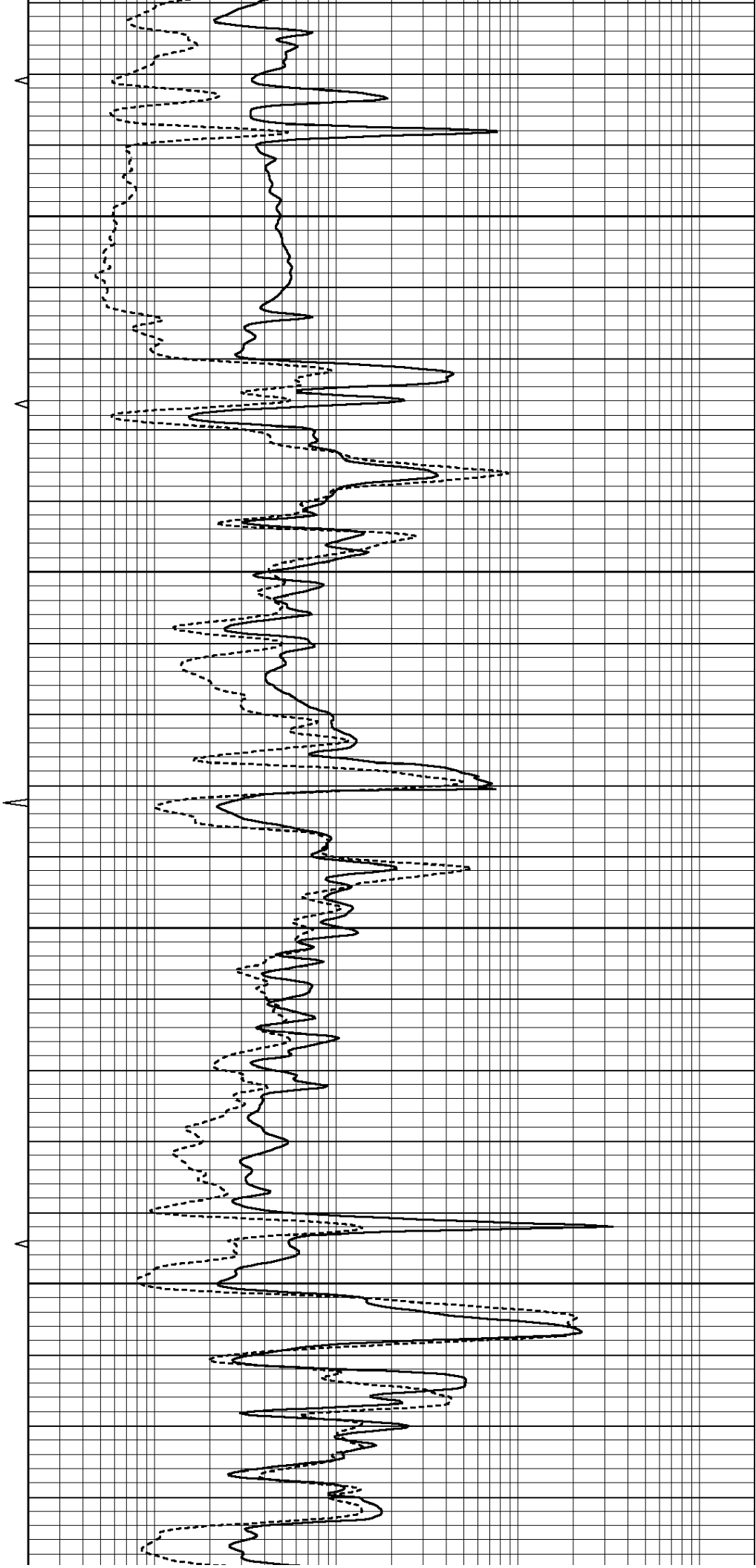
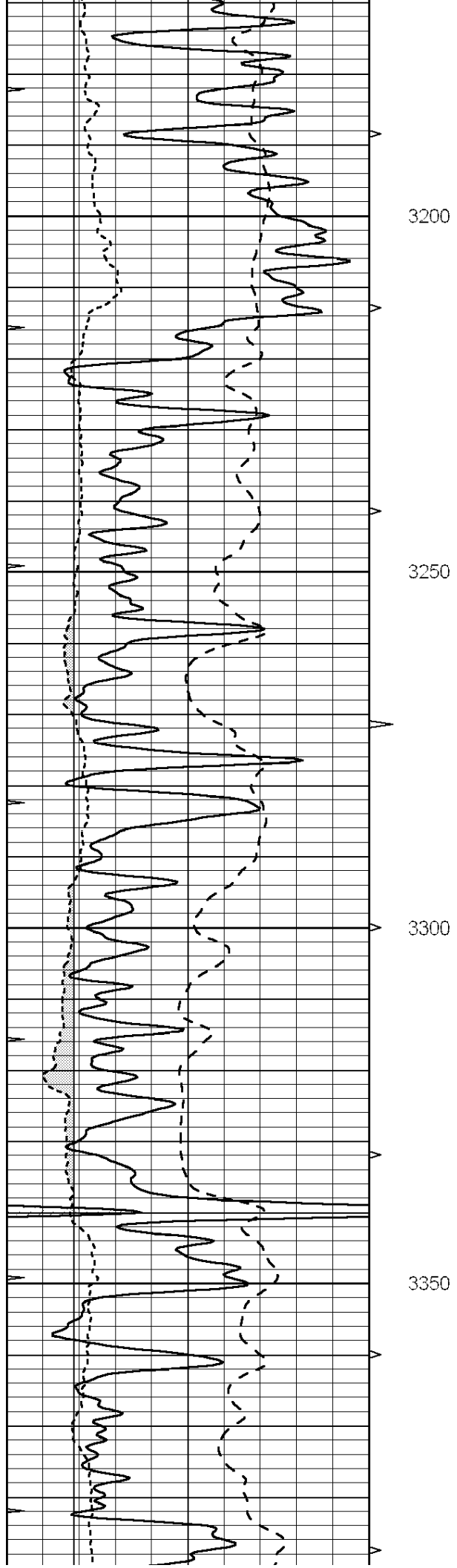
Database File: 009117rag.db  
 Dataset Pathname: pass4.3  
 Presentation Format: rag2  
 Dataset Creation: Tue May 15 21:33:22 2012  
 Charted by: Depth in Feet scaled 1:240

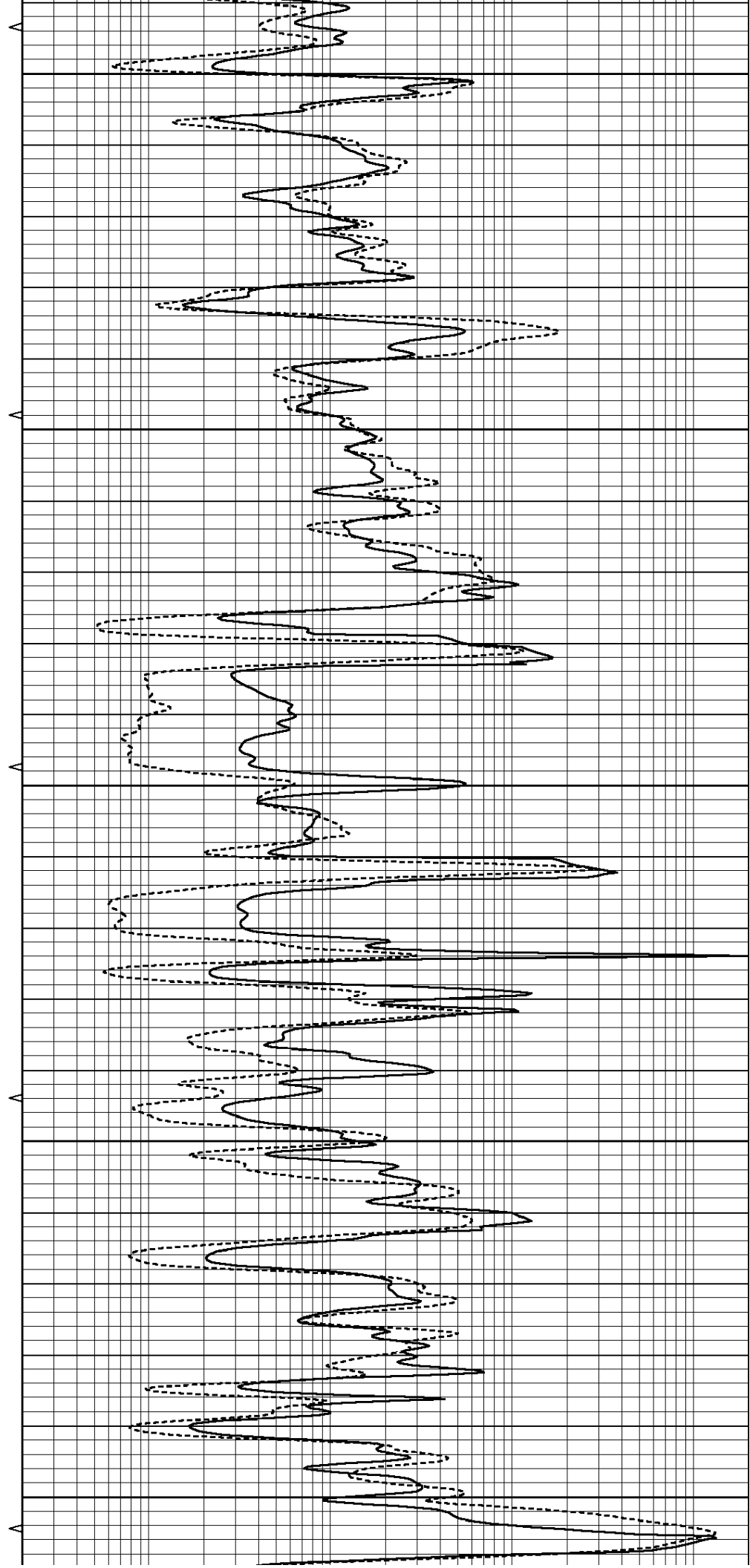
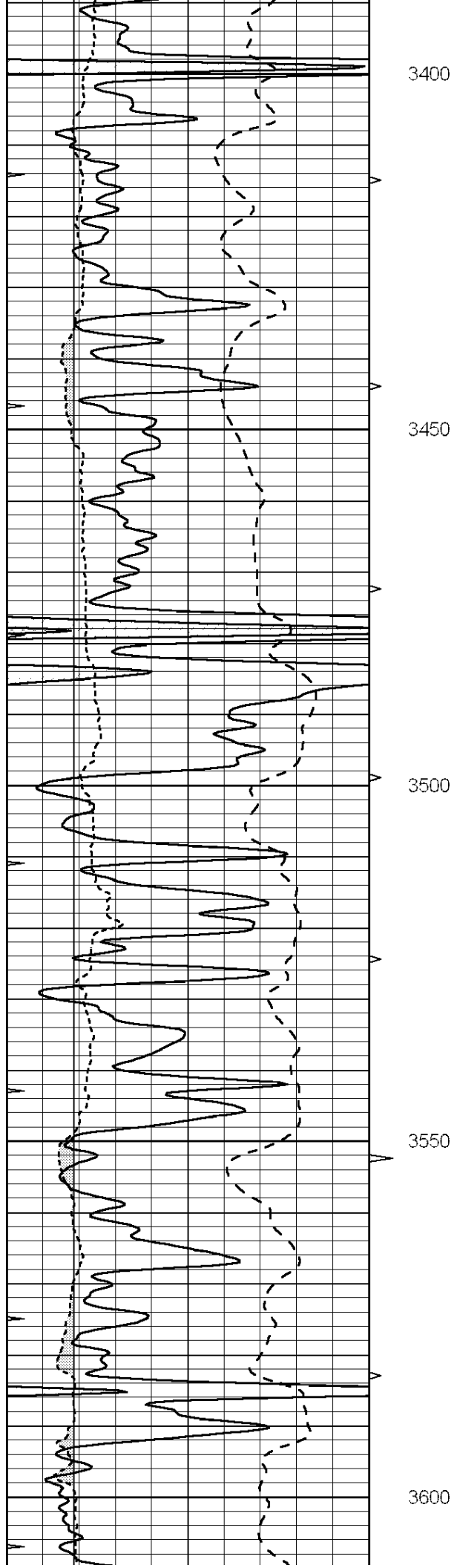


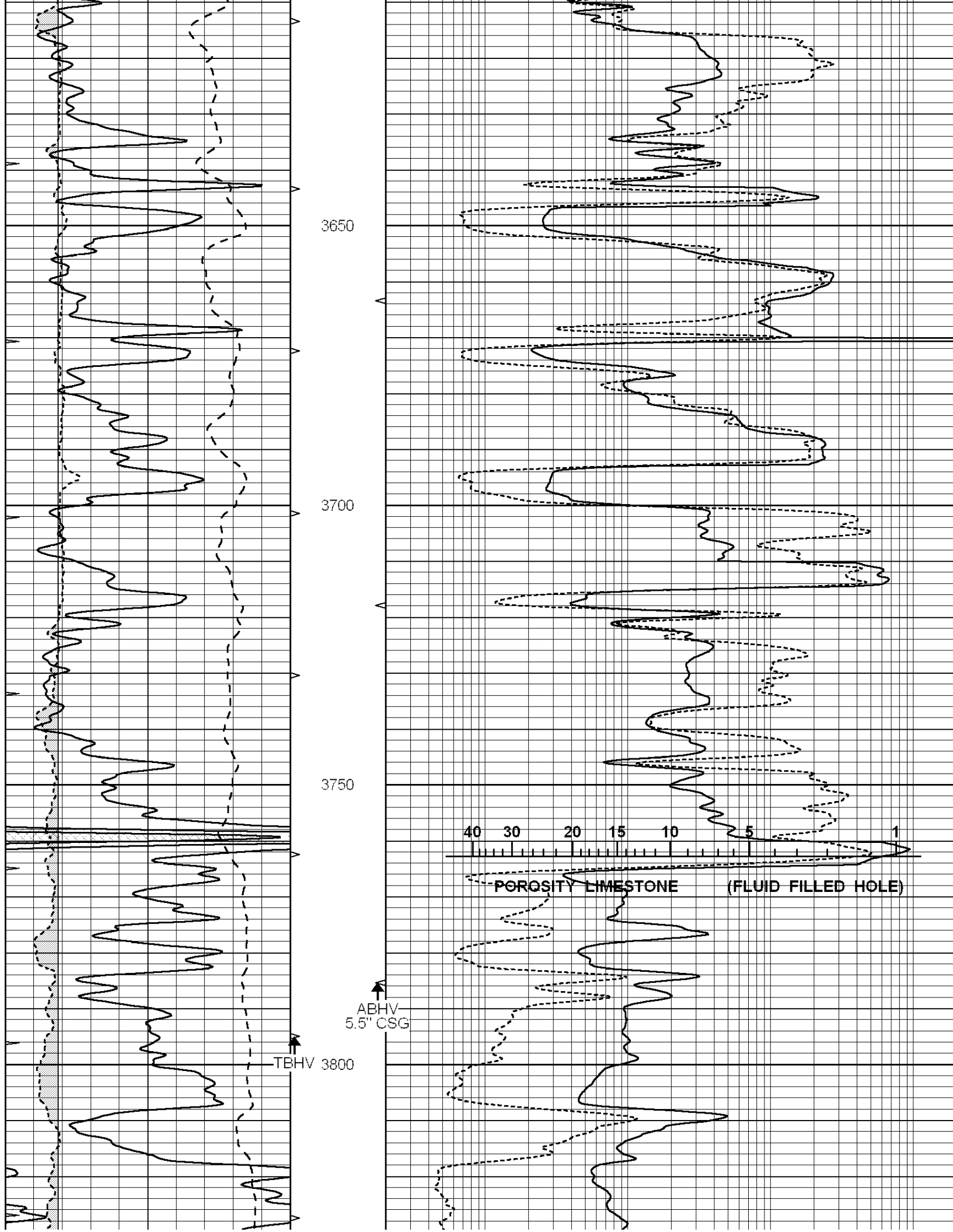
Database File: 009117rag.db  
 Dataset Pathname: pass4.3  
 Presentation Format: rag  
 Dataset Creation: Tue May 15 21:33:22 2012  
 Charted by: Depth in Feet scaled 1:240

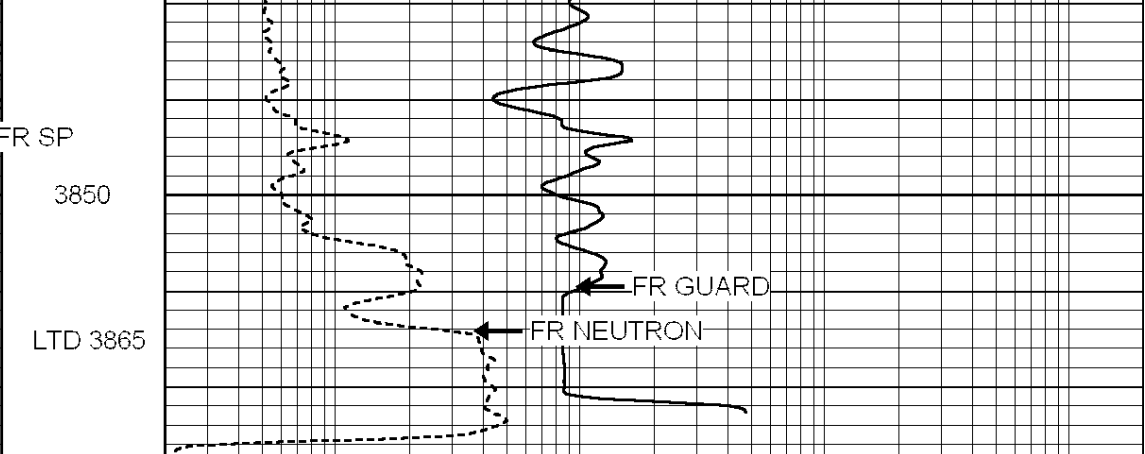
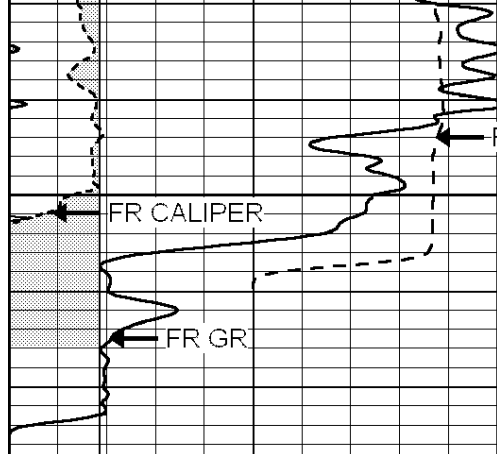
0	GAMMA RAY (GAPI)	150	ABHV	0.8	GUARD (Ohm-m)	2000
-100	SP (mV)	100	10 (ft3)	0 0	NEUTRON (NAPI)	1000
6	CALIPER (in)	16	TBHV			
			0 (ft3)	10		











0	GAMMA RAY (GAPI)	150	ABHV	0.8	GUARD (Ohm-m)	2000
-100	SP (mV)	100	10 (ft3) 0	0	NEUTRON (NAPI)	1000
6	CALIPER (in)	16	TBHV			
			0 (ft3) 10			

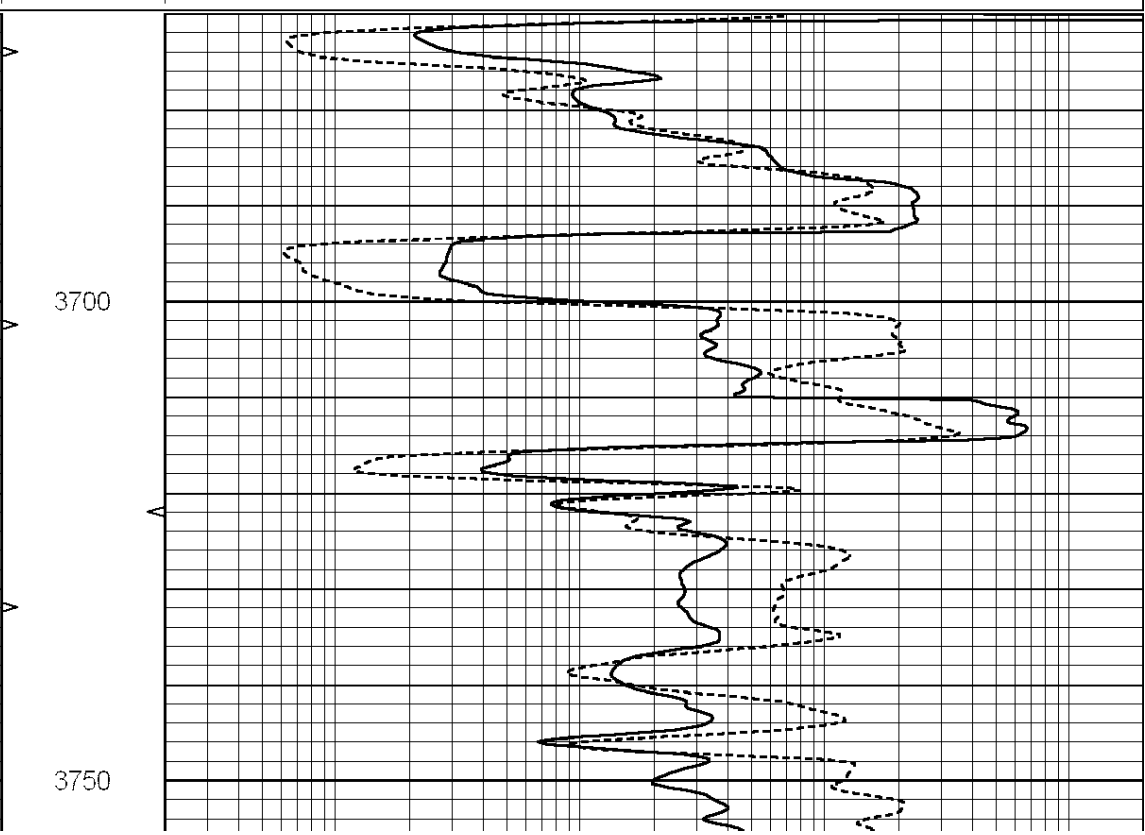
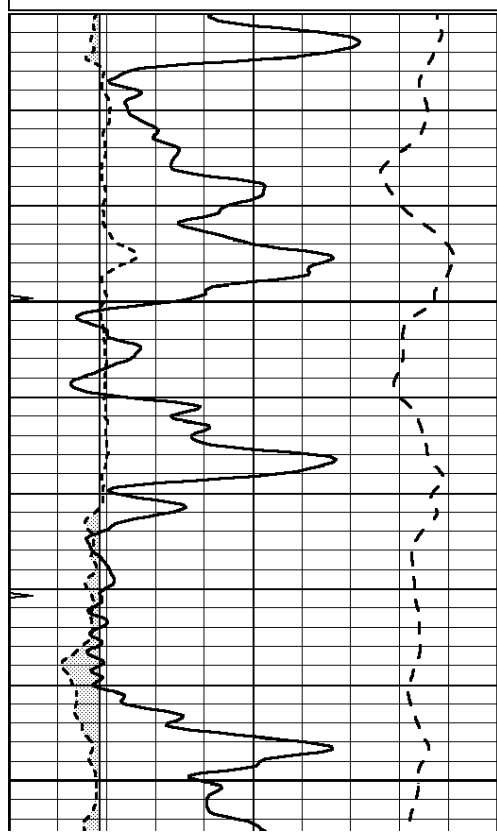


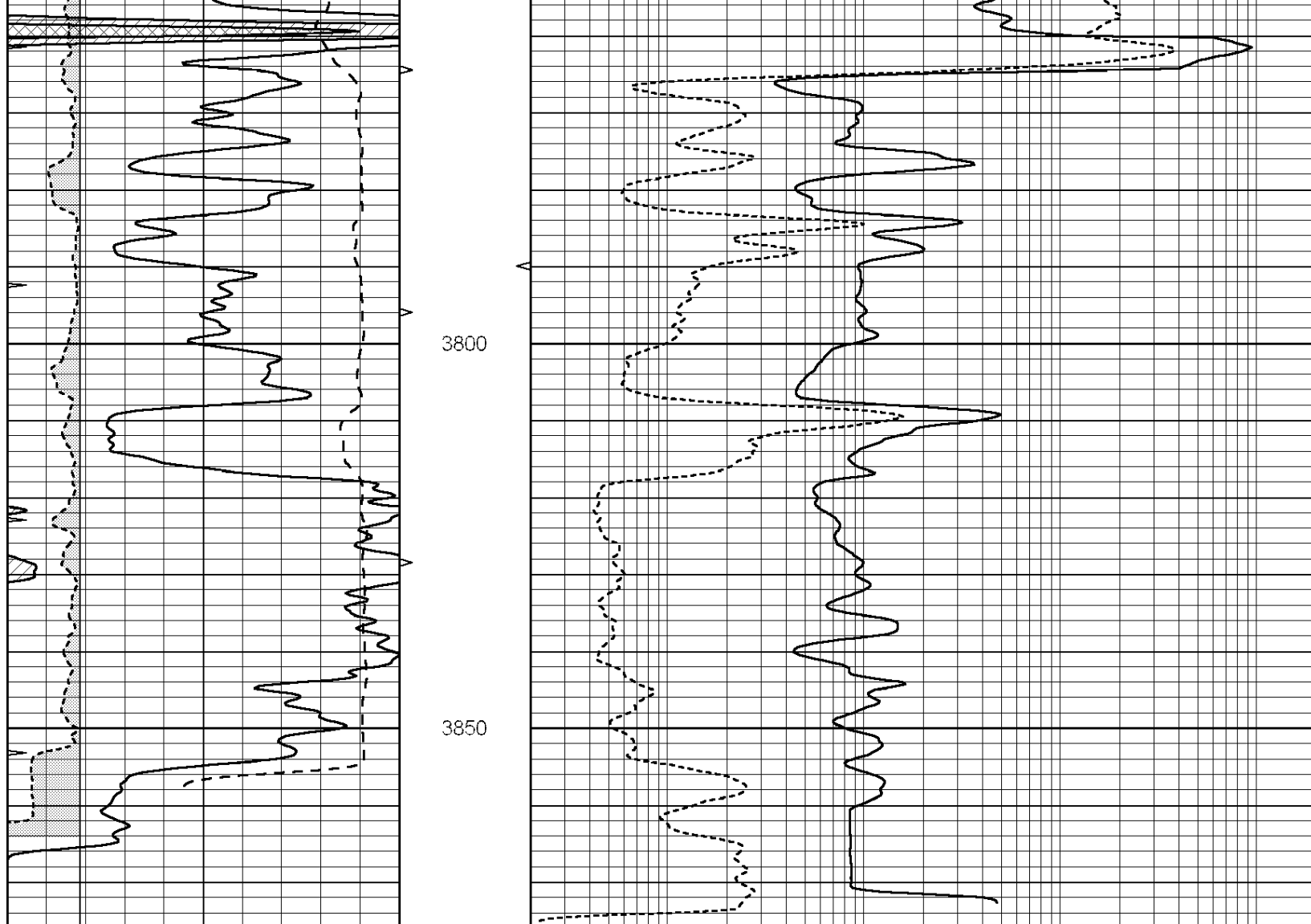
SUPERIOR  
Hays,  
Kansas

# REPEAT SECTION

Database File: 009117rag.db  
 Dataset Pathname: pass3.5  
 Presentation Format: rag  
 Dataset Creation: Tue May 15 21:09:06 2012  
 Charted by: Depth in Feet scaled 1:240

0	GAMMA RAY (GAPI)	150	ABHV	0.8	GUARD (Ohm-m)	2000
-100	SP (mV)	100	10 (ft3) 0	0	NEUTRON (NAPI)	1000
6	CALIPER (in)	16	TBHV			
			0 (ft3) 10			





0	GAMMA RAY (GAPI)	150	ABHV	0.8	GUARD (Ohm-m)	2000
-100	SP (mV)	100	10 (ft3)	0 0	NEUTRON (NAPI)	1000
6	CALIPER (in)	16	TBHV			
			0 (ft3)	10		