



SUPERIOR
Hays,
Kansas

MICRO
LOG

Company MICHAEL D. WEILERT OIL COMPANY
Well VELEY-RIEDEL #2
Field IRVIN
County ELLIS
State KANSAS

Company MICHAEL D. WEILERT OIL COMPANY
Well VELEY-RIEDEL #2
Field IRVIN
County ELLIS State KANSAS

Location: API #: 15-051-26242-0000
3266' FSL & 735' FEL
NE - SW - SE - NE
SEC 7 TWP 14S RGE 19W
Permanent Datum GROUND LEVEL Elevation
Log Measured From KELLY BUSHING 5' A.G.L.
Drilling Measured From KELLY BUSHING
Other Services
RAG
Elevation
K.B.
D.F.
G.L.

Date	5-15-12
Run Number	TWO
Depth Driller	3864
Depth Logger	3865
Bottom Logged Interval	3864
Top Log Interval	3000
Casing Driller	214
Casing Logger	212
Bit Size	7.875
Type Fluid in Hole	CHEMICAL MUD
Density / Viscosity	9.4 / 56
pH / Fluid Loss	10.0 / 8.0
Source of Sample	FLOWLINE
Rim @ Meas. Temp	0.50 @ 96F
Rmf @ Meas. Temp	0.38 @ 96F
Rmc @ Meas. Temp	0.60 @ 96F
Source of Rmf / Rmc	MEASURED
Rim @ BHT	0.42 @ 115F
Time Circulation Stopped	2 HOURS
Time Logger on Bottom	
Maximum Recorded Temperature	115F
Equipment Number	860
Location	HAYS, KS.
Recorded By	JEFF GRONEWEG
Witnessed By	MIKE WEILERT

<<< Fold Here >>>

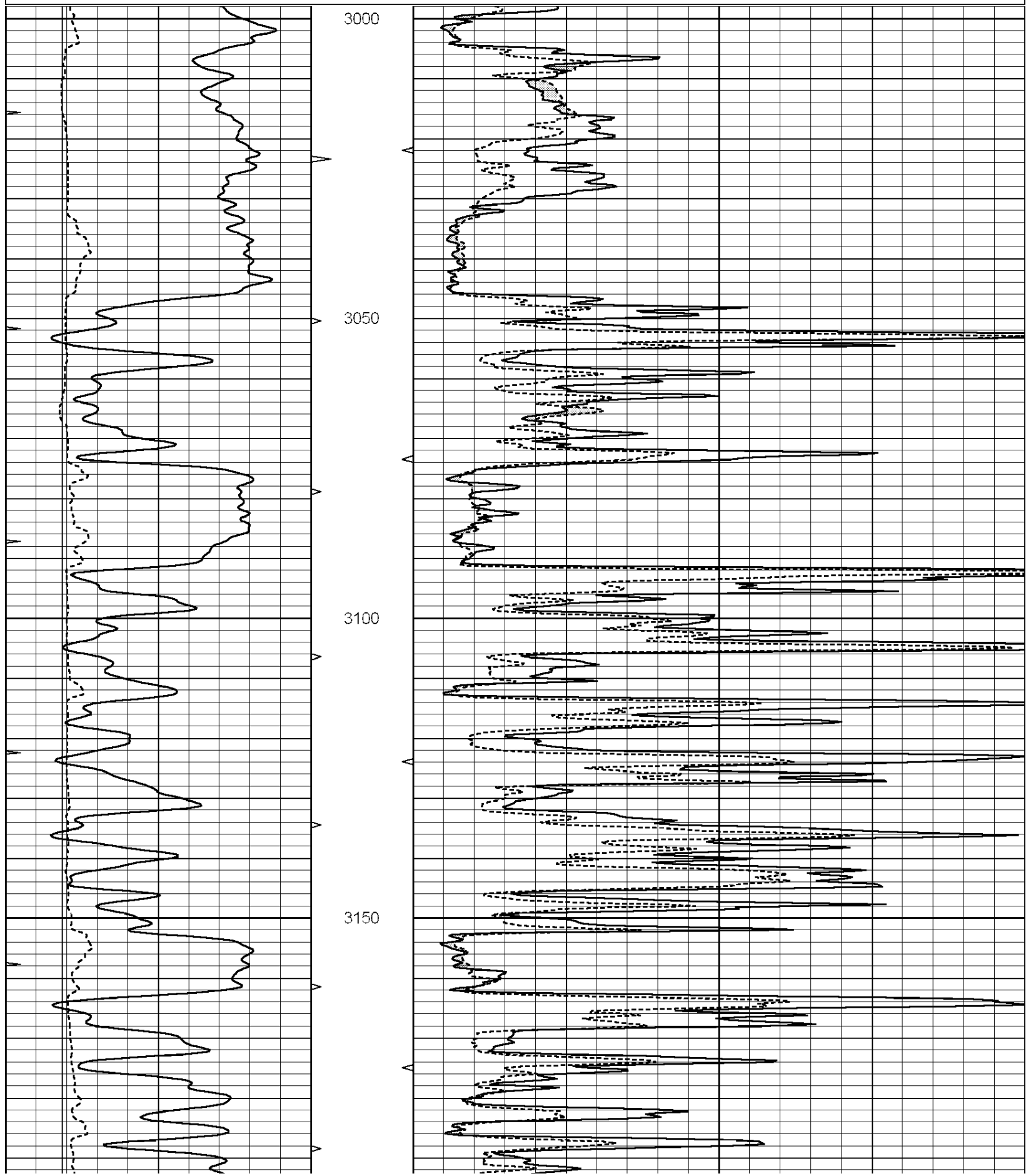
All interpretations are opinions based on inferences from electrical or other measurements and we cannot and do not guarantee the accuracy or correctness of any interpretation, and we shall not, except in the case of gross or willful negligence on our part, be liable or responsible for any loss, costs, damages, or expenses incurred or sustained by anyone resulting from any interpretation made by any of our officers, agents or employees. These interpretations are also subject to our general terms and conditions set out in our current Price Schedule.

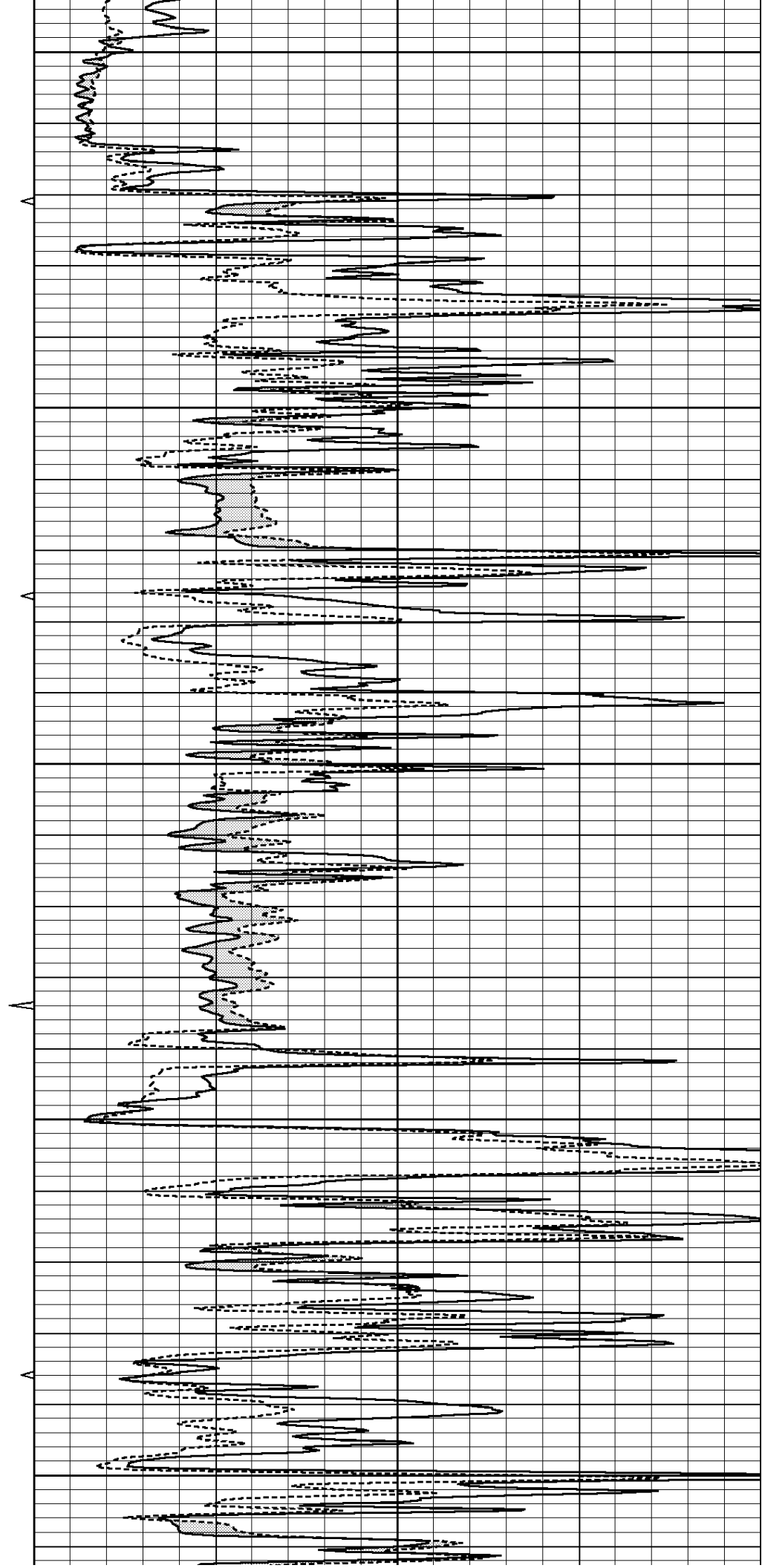
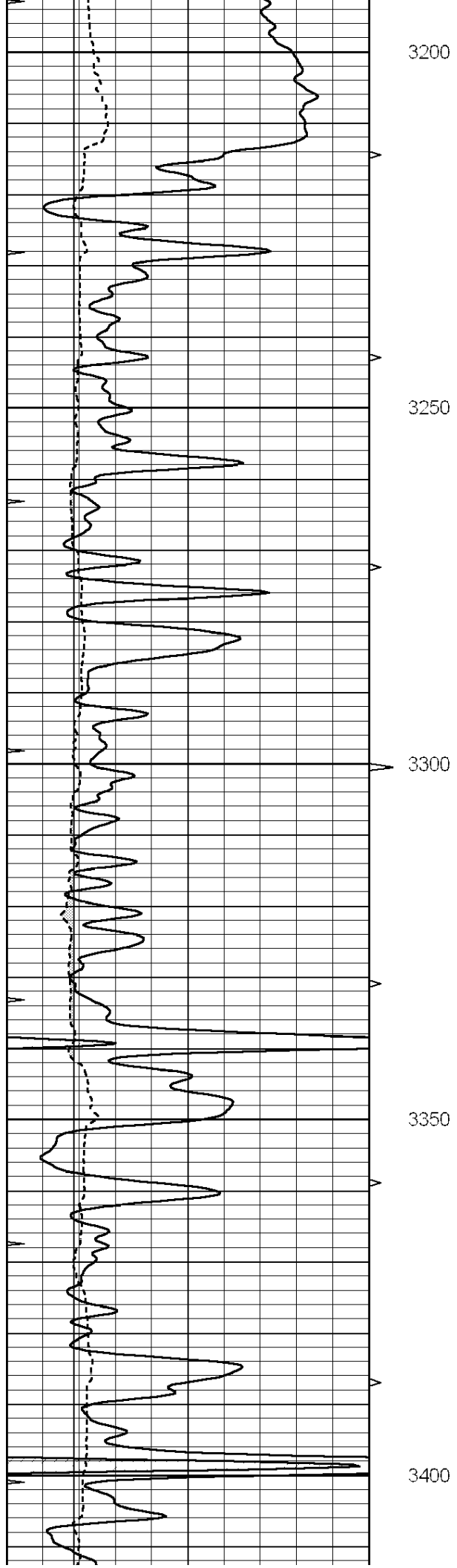
Comments

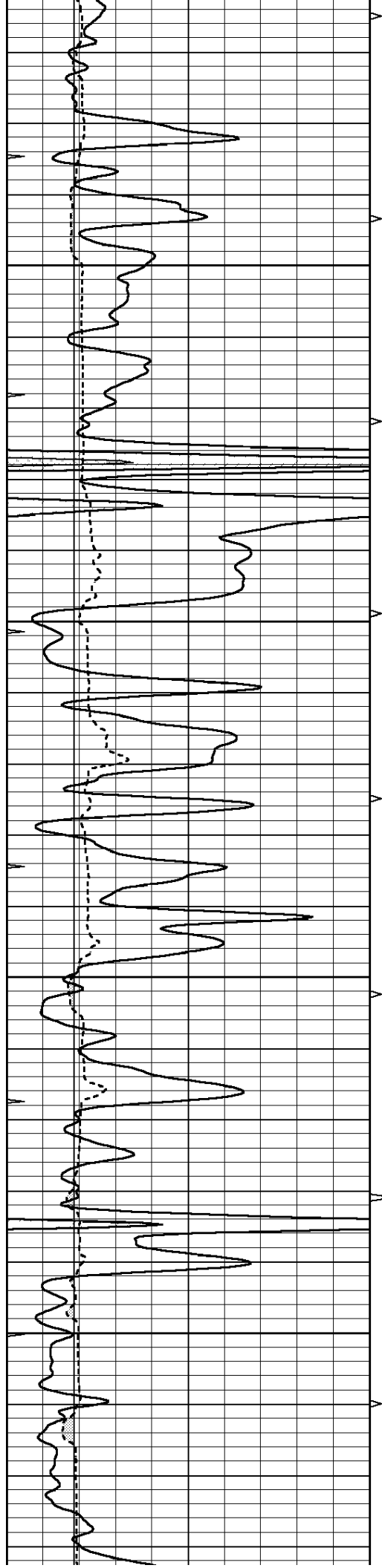
SUPERIOR WELL SERVICES
 785-628-6395
 THANK YOU FOR YOUR BUSINESS
 DIRECTIONS: YOCEMENTO, KS - NORTH TO GOLF COURSE RD
 2 MILES WEST - 1/4 MILE SOUTH - WEST INTO

0	GAMMA RAY (GAPI)	150
6	MELCAL (in)	16
0	MINMK	20

0	MEL1.5 (Ohm-m)	40
0	MEL2.0 (Ohm-m)	40





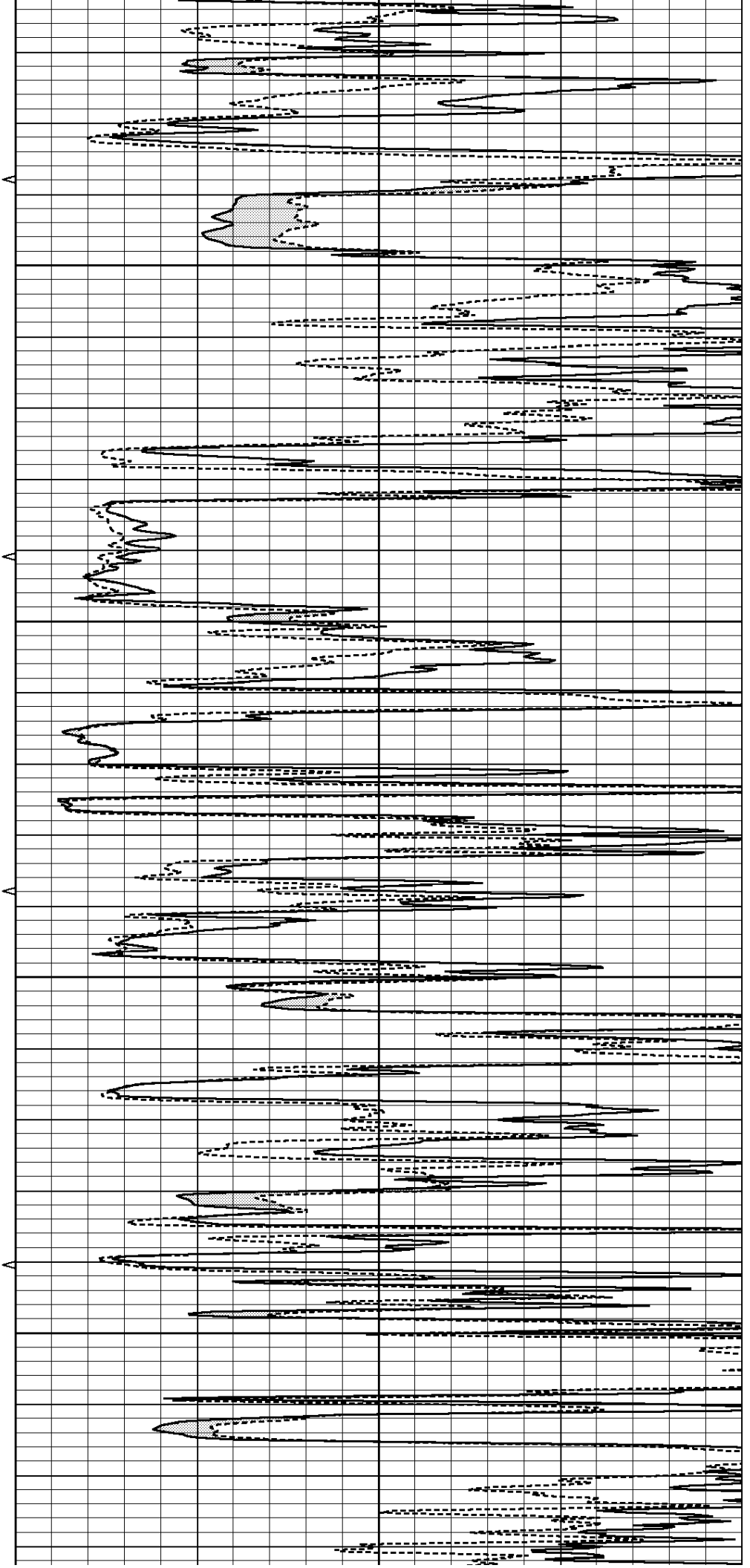


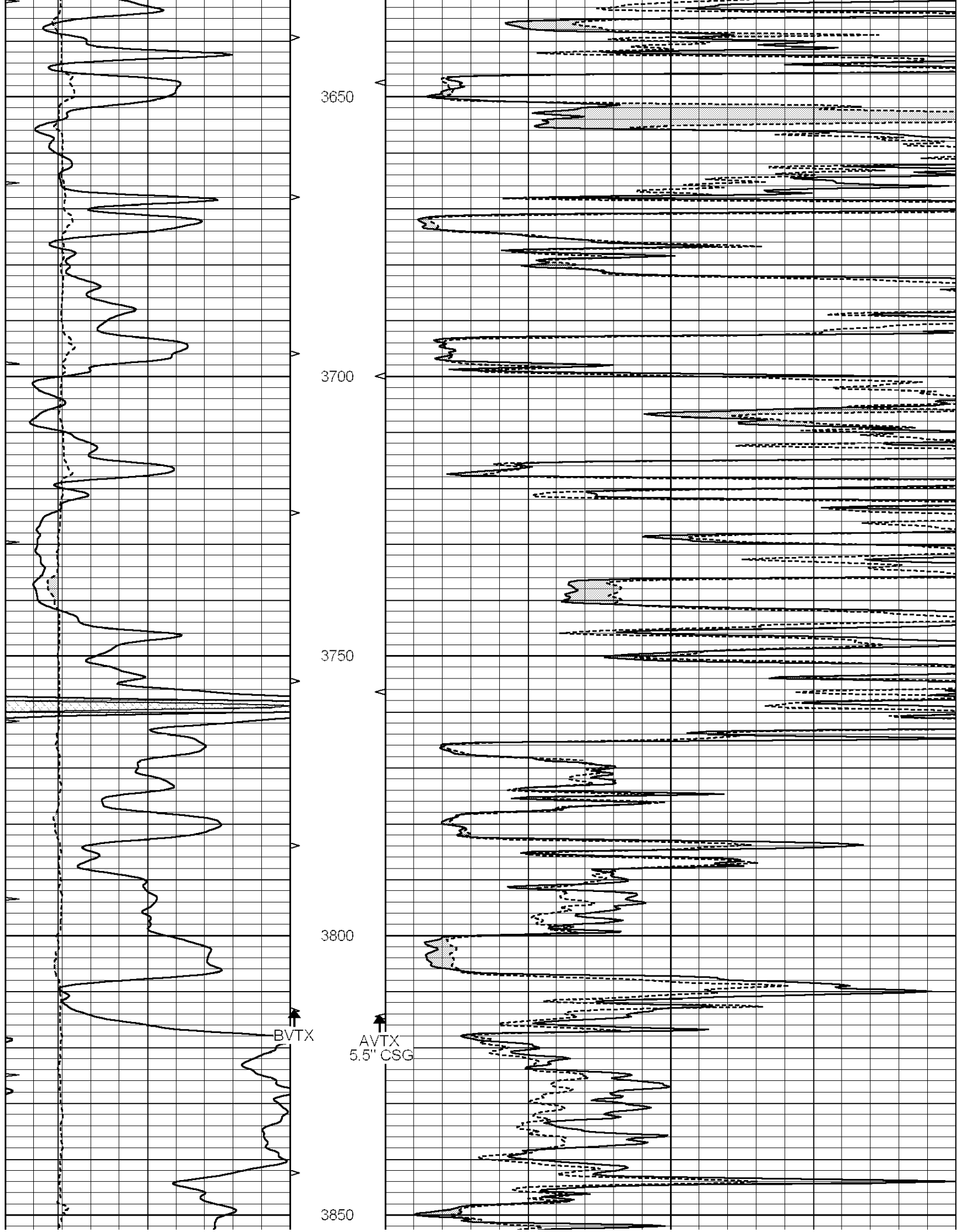
3450

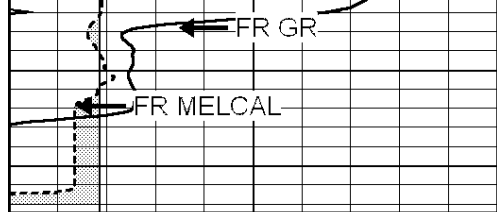
3500

3550

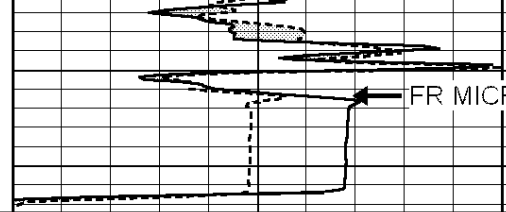
3600







LTD 3865



0	GAMMA RAY (GAPI)	150
6	MELCAL (in)	16
<hr style="border-top: 1px dashed black;"/>		
0	MINMK	20

0	MEL1.5 (Ohm-m)	40
0	MEL2.0 (Ohm-m)	40
<hr style="border-top: 1px dashed black;"/>		



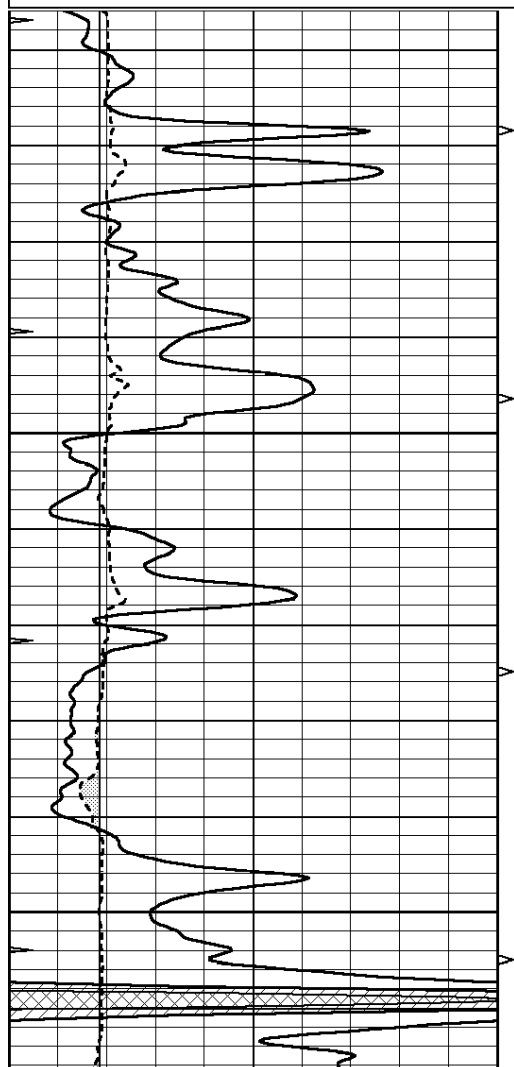
SUPERIOR
Hays,
Kansas

REPEAT SECTION

Database File: 009117rag.db
 Dataset Pathname: pass8.1
 Presentation Format: micro
 Dataset Creation: Tue May 15 22:16:24 2012 by Calc Open-Cased 090629
 Charted by: Depth in Feet scaled 1:240

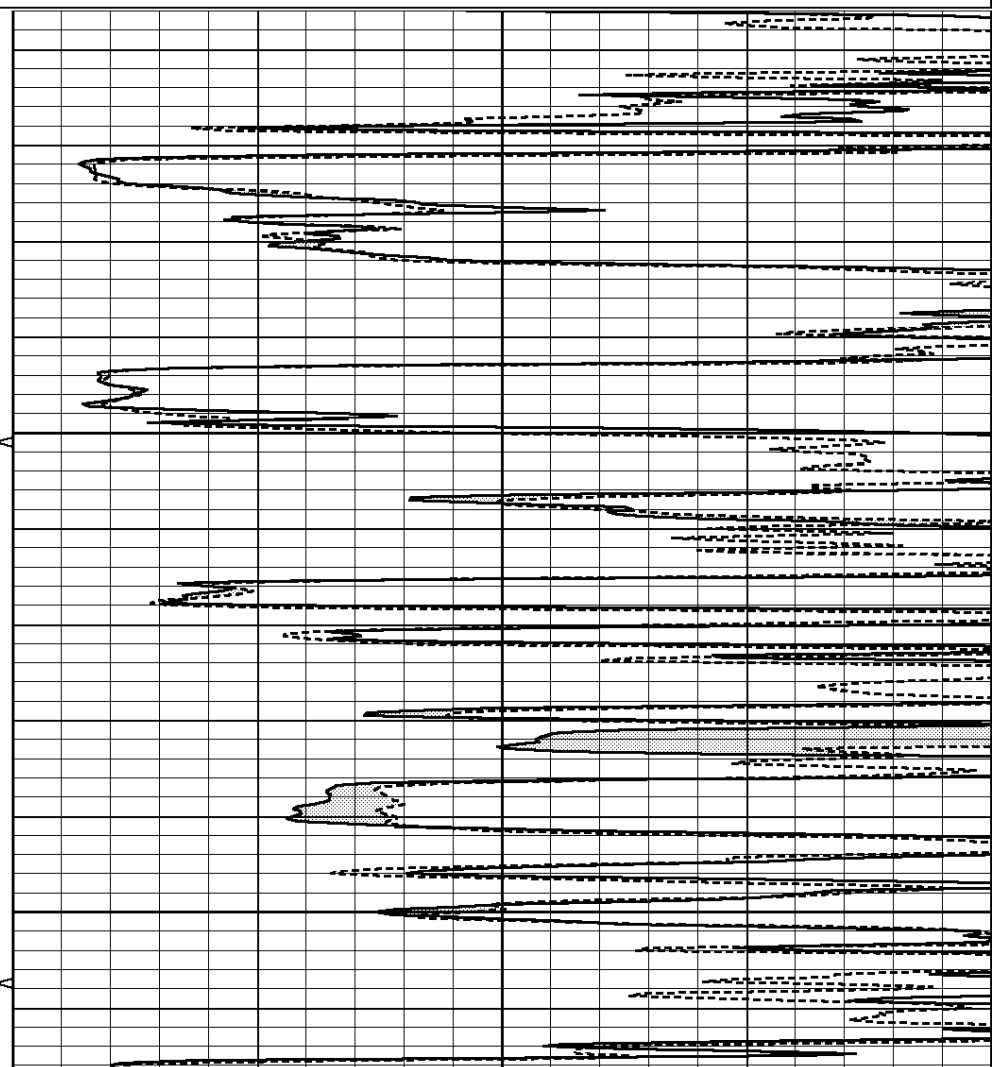
0	GAMMA RAY (GAPI)	150
6	MELCAL (in)	16
<hr style="border-top: 1px dashed black;"/>		
0	MINMK	20

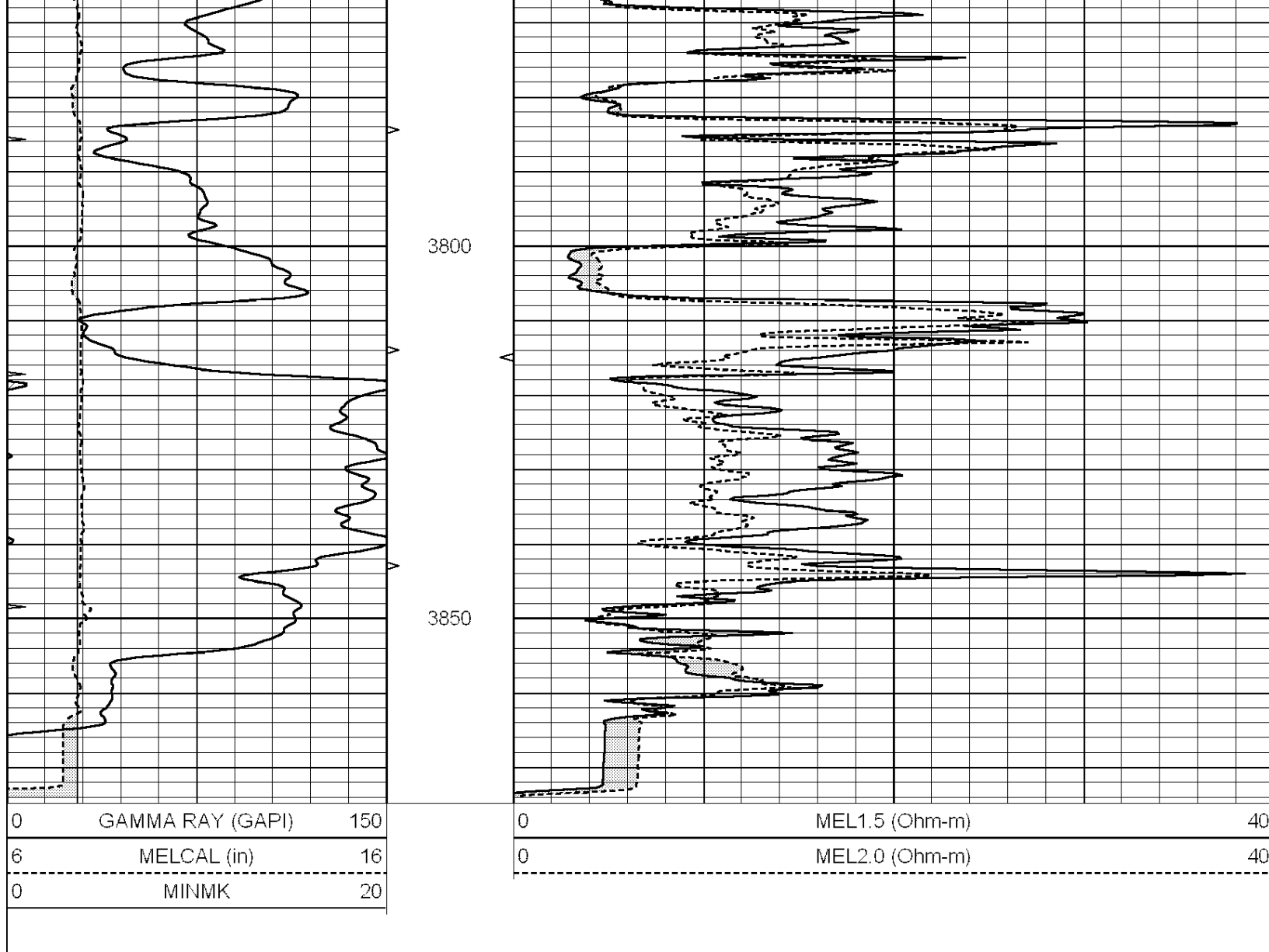
0	MEL1.5 (Ohm-m)	40
0	MEL2.0 (Ohm-m)	40
<hr style="border-top: 1px dashed black;"/>		



3700

3750





Calibration Report

Database File: 009117rag.db
 Dataset Pathname: pass9.1
 Dataset Creation: Tue May 15 22:45:39 2012 by Calc Open-Cased 090629

MICRO Calibration Report

Serial Number:	MICRO4	
Tool Model:	PROBE	
Performed:	Tue May 15 03:00:51 2012	
Caliper Calibration:	Gain=1.230	Offset=1.099
References	Low Cal 7.600	High Cal 11.000
Readings	5.449	8.214
1.5" Calibration:	Gain=40.000	Offset=-1.000
References	Low Cal 0.000	High Cal 20.000
Readings	0.009	1.541
2" Calibration:	Gain=45.000	Offset=0.200
References	Low Cal 0.000	High Cal 20.000

Readings

0.004

1.198

Gamma Ray Calibration Report

Serial Number:

GR2

Tool Model:

OPEN

Performed:

Fri Feb 04 23:55:14 2011

Calibrator Value:

200.0

GAPI

Background Reading:

0.0

cps

Calibrator Reading:

740.0

cps

Sensitivity:

0.3400

GAPI/cps