



SUPERIOR
Hays,
Kansas

SONIC
LOG

Company MULL DRILLING COMPANY, INC.
Well #2-23 ALBIN
Field WILDCAT
County GOVE
State KANSAS

Company MULL DRILLING COMPANY, INC.
Well #2-23 ALBIN
Field WILDCAT
County GOVE State KANSAS

Location: API # : 15-063-21987-0000
1150' FSL & 2582' FEL
SEC 23 TWP 15S RGE 27W
Permanent Datum GROUND LEVEL Elevation 2467
Log Measured From KELLY BUSHING 5' A.G.L.
Drilling Measured From KELLY BUSHING
Other Services
CDL/CNL/PE
DIL/MEL
Elevation
K.B. 2472
D.F. 2470
G.L. 2467

Date	5/18/12
Run Number	TWO
Depth Driller	4450
Depth Logger	4456
Bottom Logged Interval	4444
Top Log Interval	200
Casing Driller	8 5/8"@222'
Casing Logger	224
Bit Size	7 7/8"
Type Fluid in Hole	CHEMICAL MUD
Density / Viscosity	9.5/53
pH / Fluid Loss	10.0/10.0
Source of Sample	FLOWLINE
Rm @ Meas. Temp	.600@80F
Rmt @ Meas. Temp	.450@80F
Rmc @ Meas. Temp	.720@80F
Source of Rmf / Rmc	MEASUREMENT
Rm @ BHT	.400@120F
Time Circulation Stopped	4 HOURS
Time Logger on Bottom	12:00 A.M.
Maximum Recorded Temperature	120F
Equipment Number	4010
Location	HAYS, KANSAS
Recorded By	JEFF LUEBBERS
Witnessed By	KEVIN KESSLER

<<< Fold Here >>>

All interpretations are opinions based on inferences from electrical or other measurements and we cannot and do not guarantee the accuracy or correctness of any interpretation, and we shall not, except in the case of gross or willful negligence on our part, be liable or responsible for any loss, costs, damages, or expenses incurred or sustained by anyone resulting from any interpretation made by any of our officers, agents or employees. These interpretations are also subject to our general terms and conditions set out in our current Price Schedule.

Comments

THANK YOU FOR USING SUPERIOR WELL SERVICE HAYS, KANSAS (785) 628-6395
DIRECTIONS
PENDENNIS, KS. & HWY 4, 6 1/2N. ON "RED CHIEF RD." TO "RD. C", 1E. TO CURVE. CONTINUE 1
MORE E. ON PASTURE TRAIL

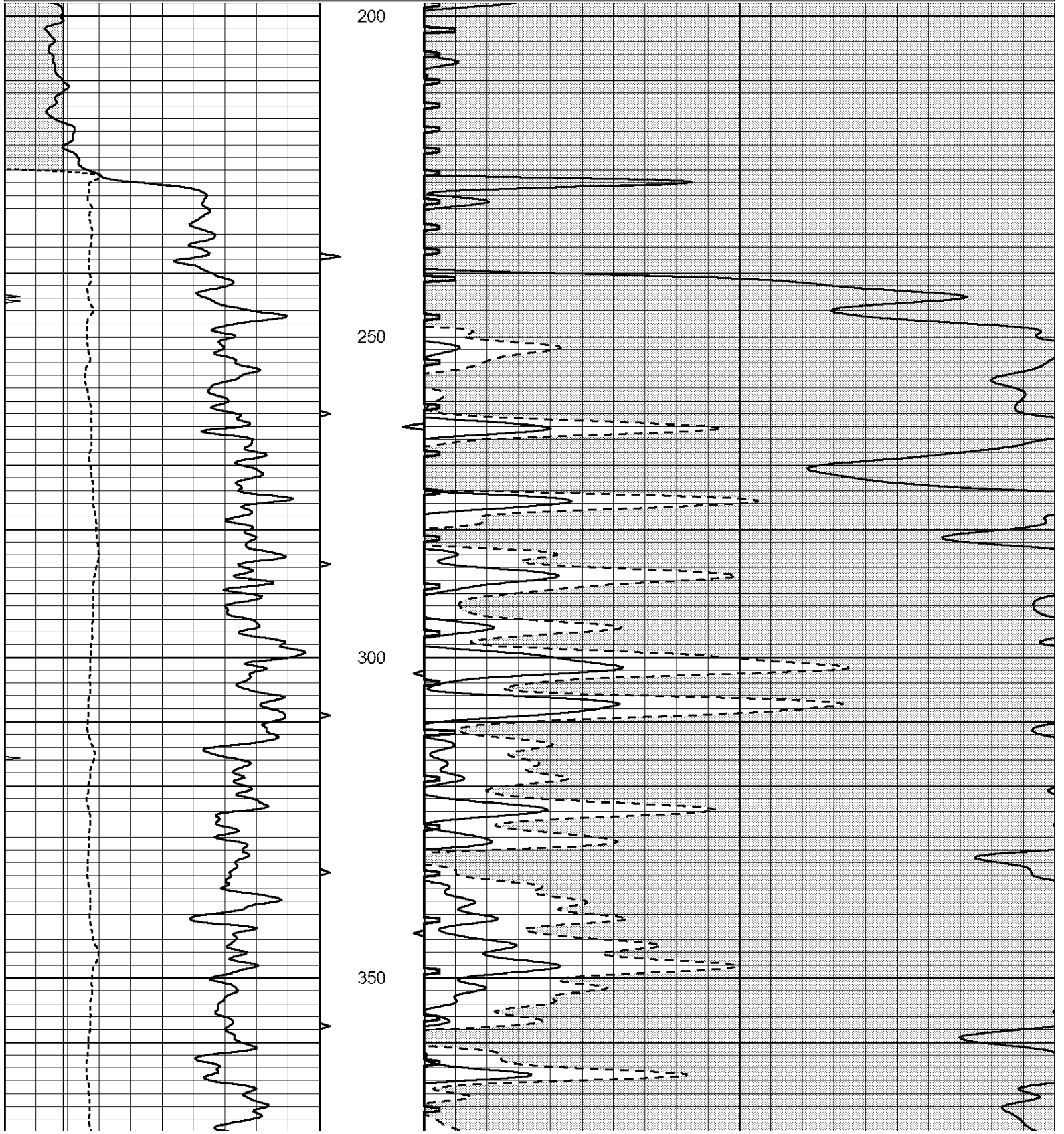


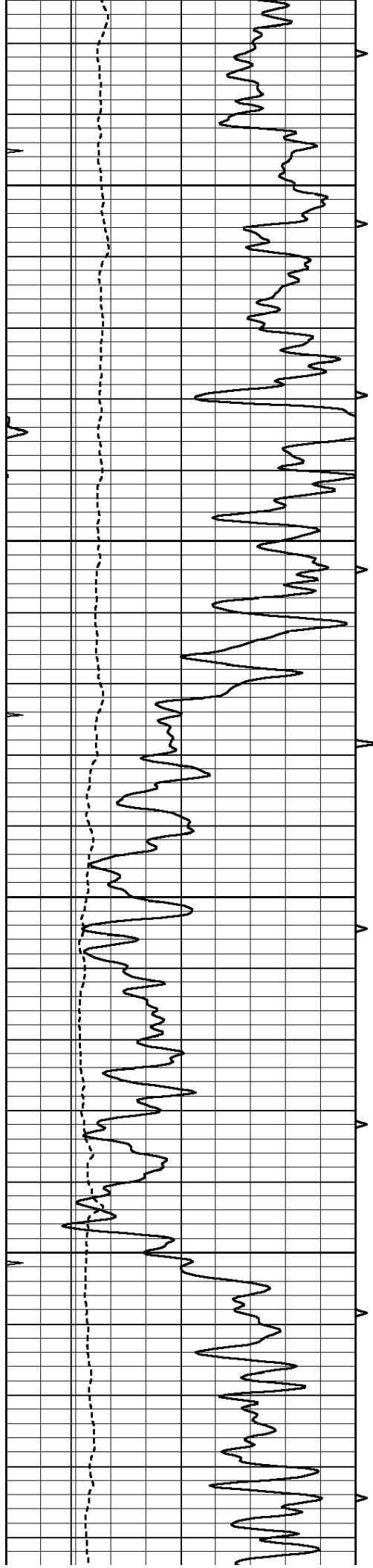
SUPERIOR
Hays,
Kansas

MAIN SECTION

Database File: 408770pe.db
 Dataset Pathname: pass6.2
 Presentation Format: slt
 Dataset Creation: Fri May 18 04:11:56 2012
 Charted by: Depth in Feet scaled 1:240

0	GAMMA RAY (GAPI)	150	ABHV	140	DELTA TIME (usec/ft)	40
6	CALIPER (in)	16	10 (ft3) 0	30	SONIC POROSITY (pu)	-10
0	MINMK	20	TBHV	0	ITT (msec)	20
			0 (ft3) 10			



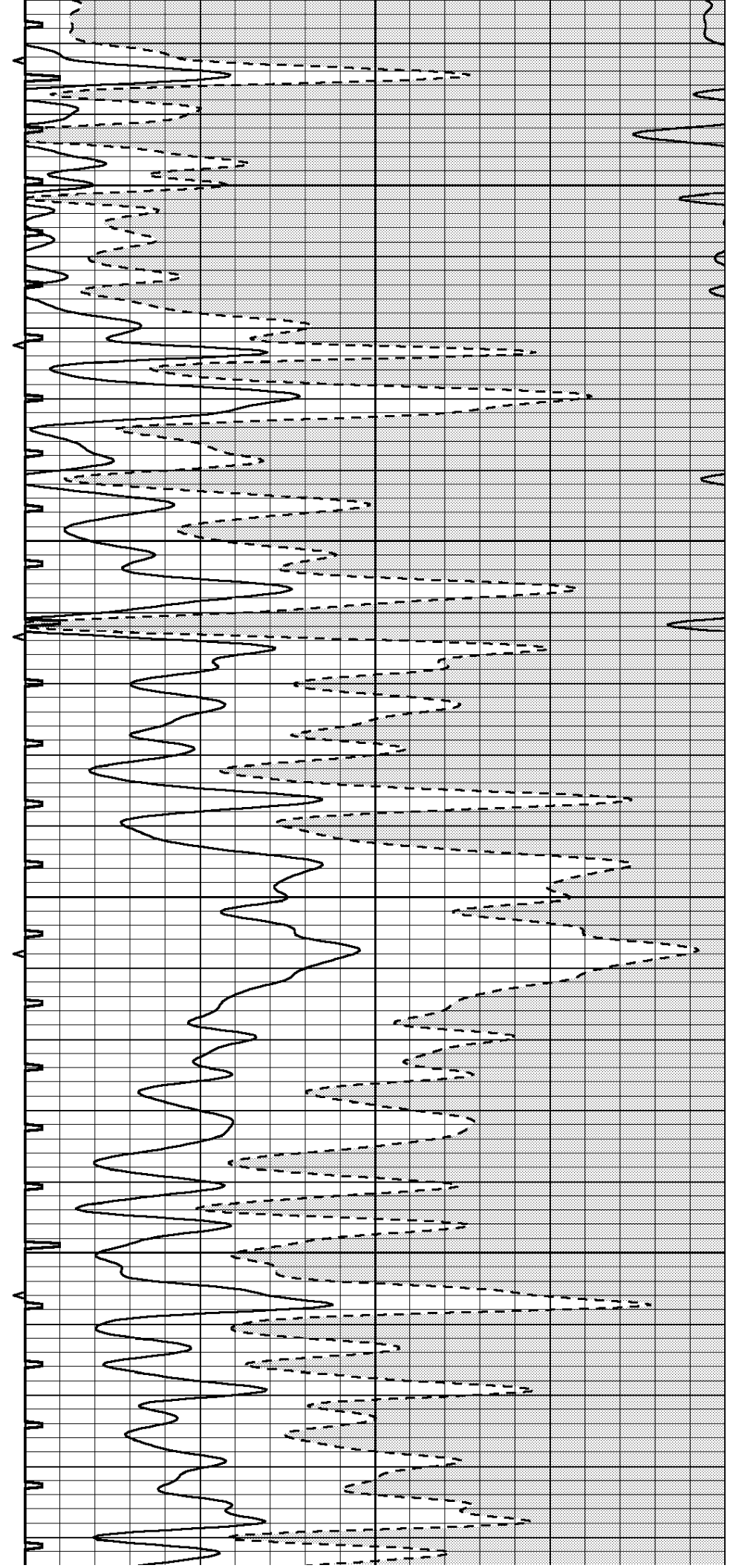


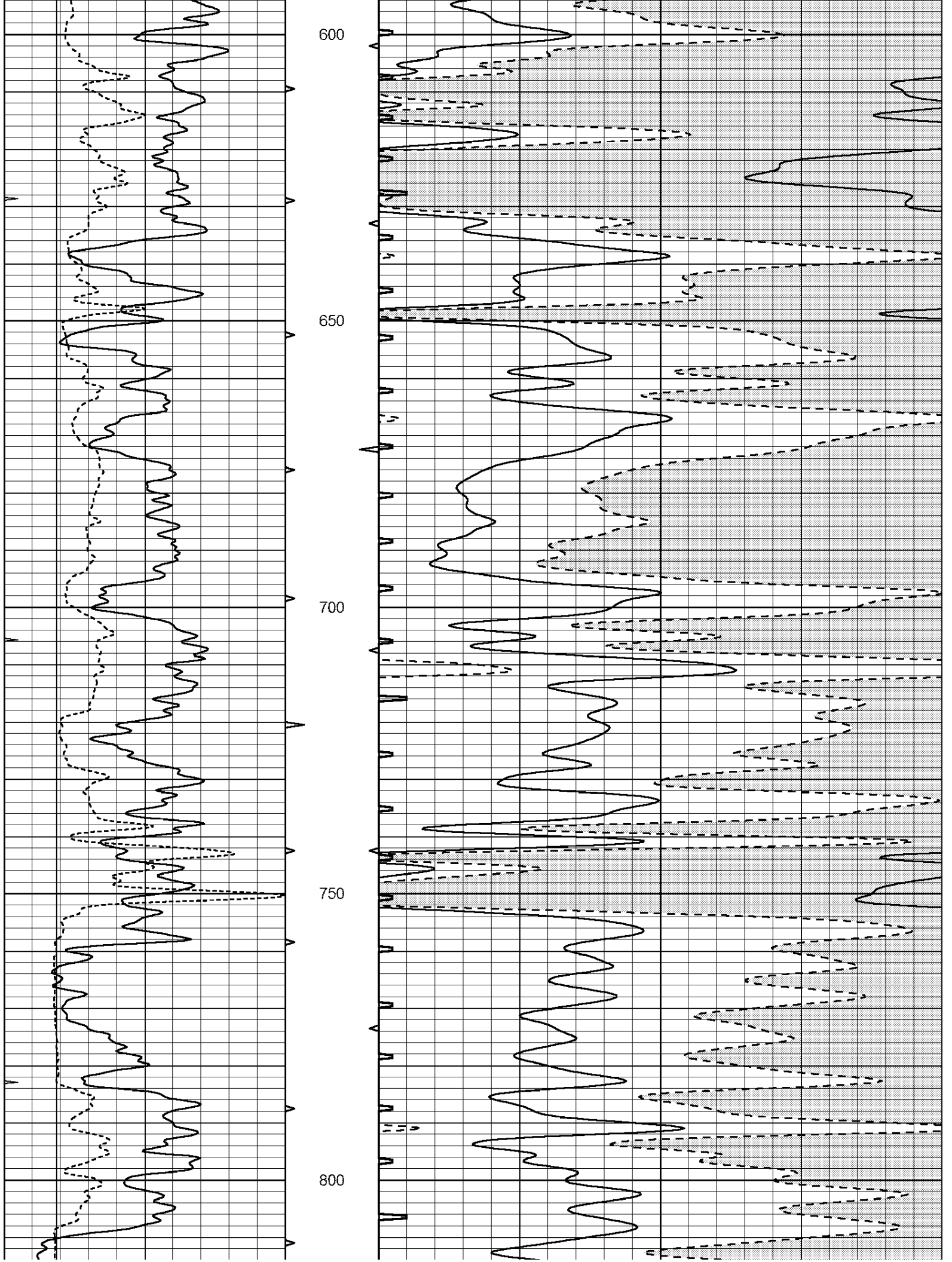
400

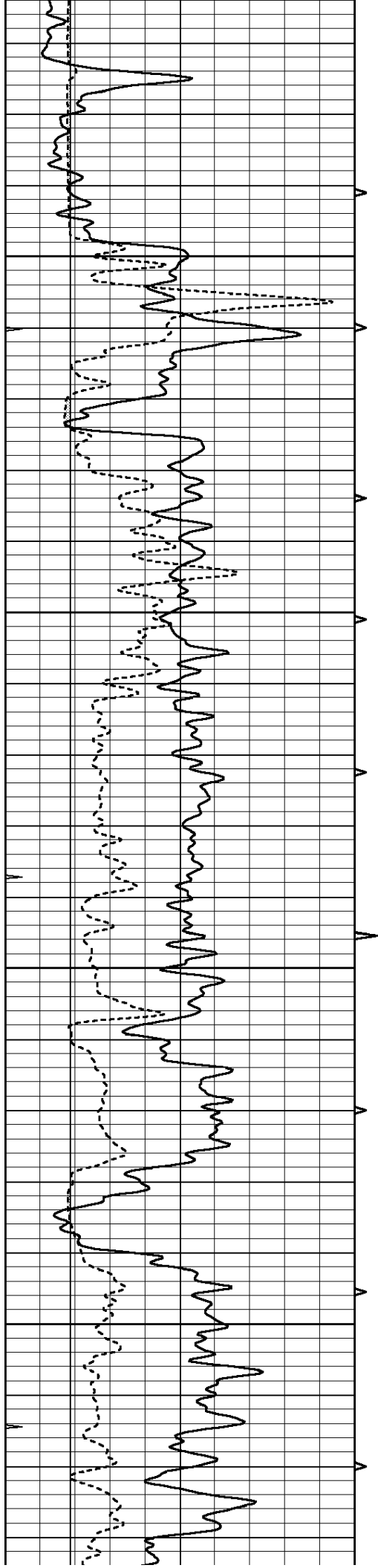
450

500

550





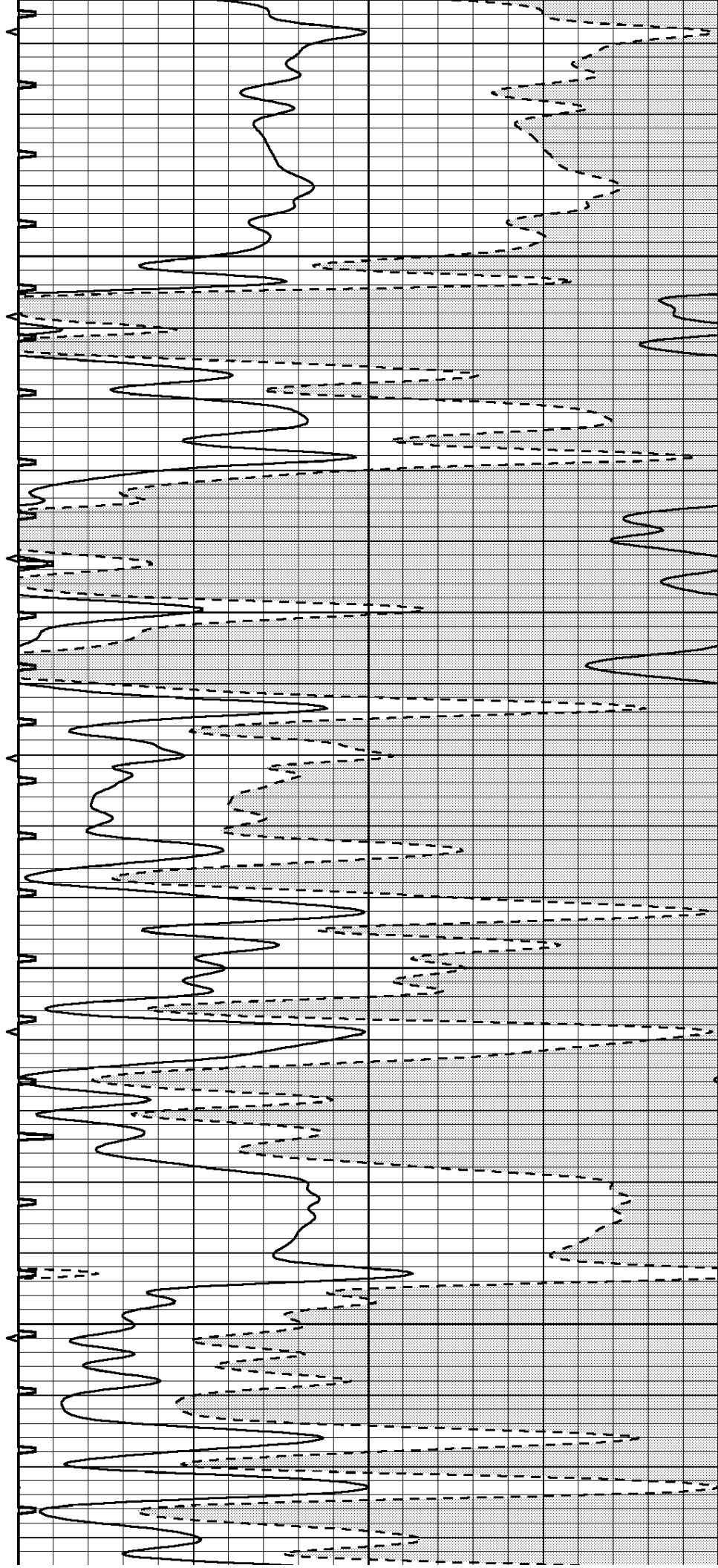


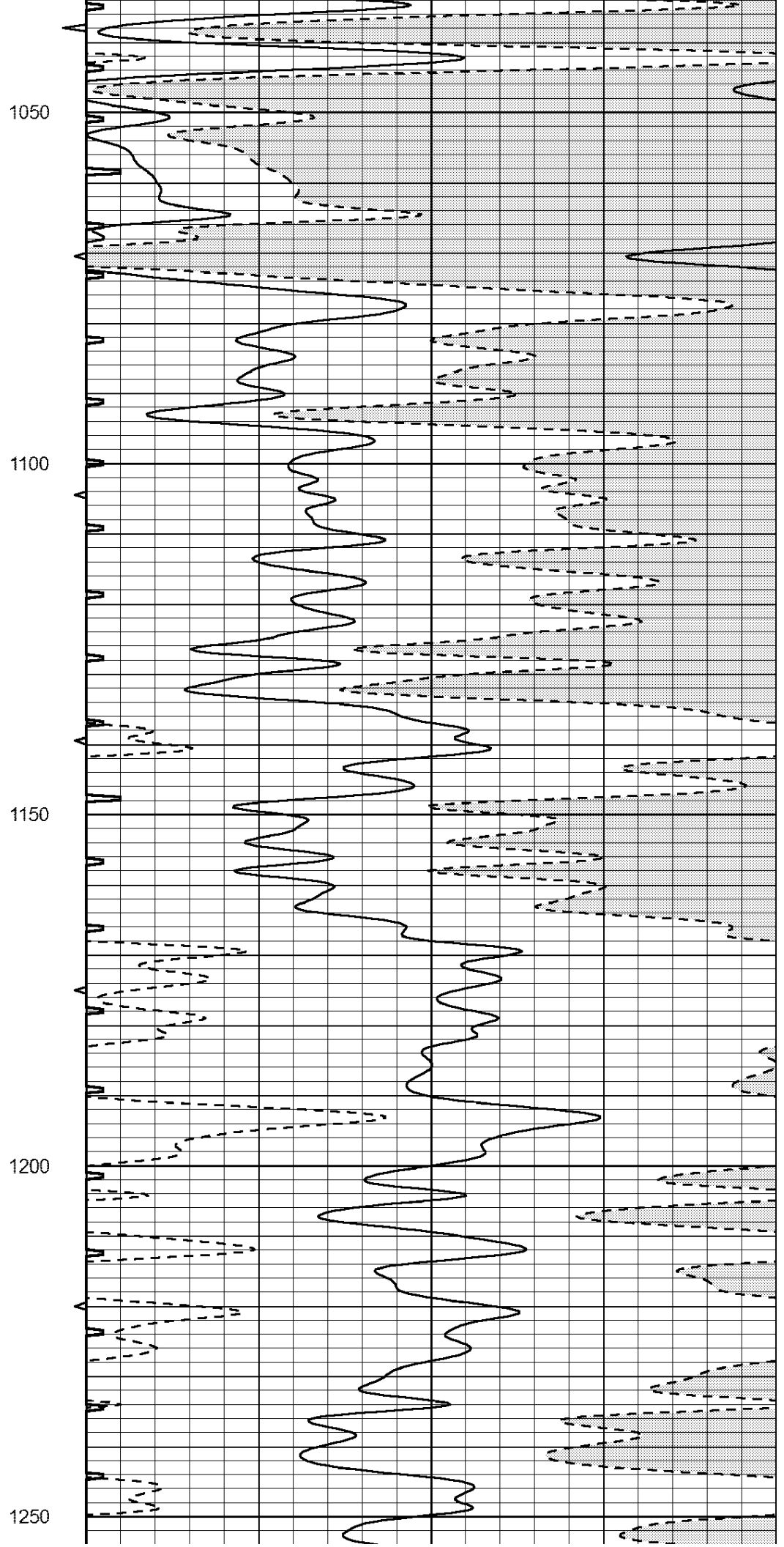
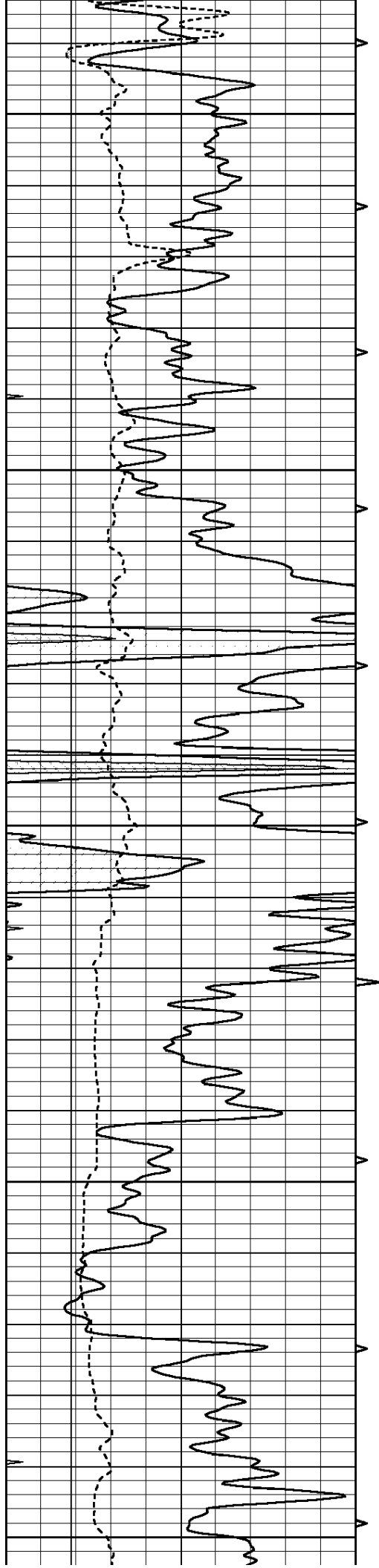
850

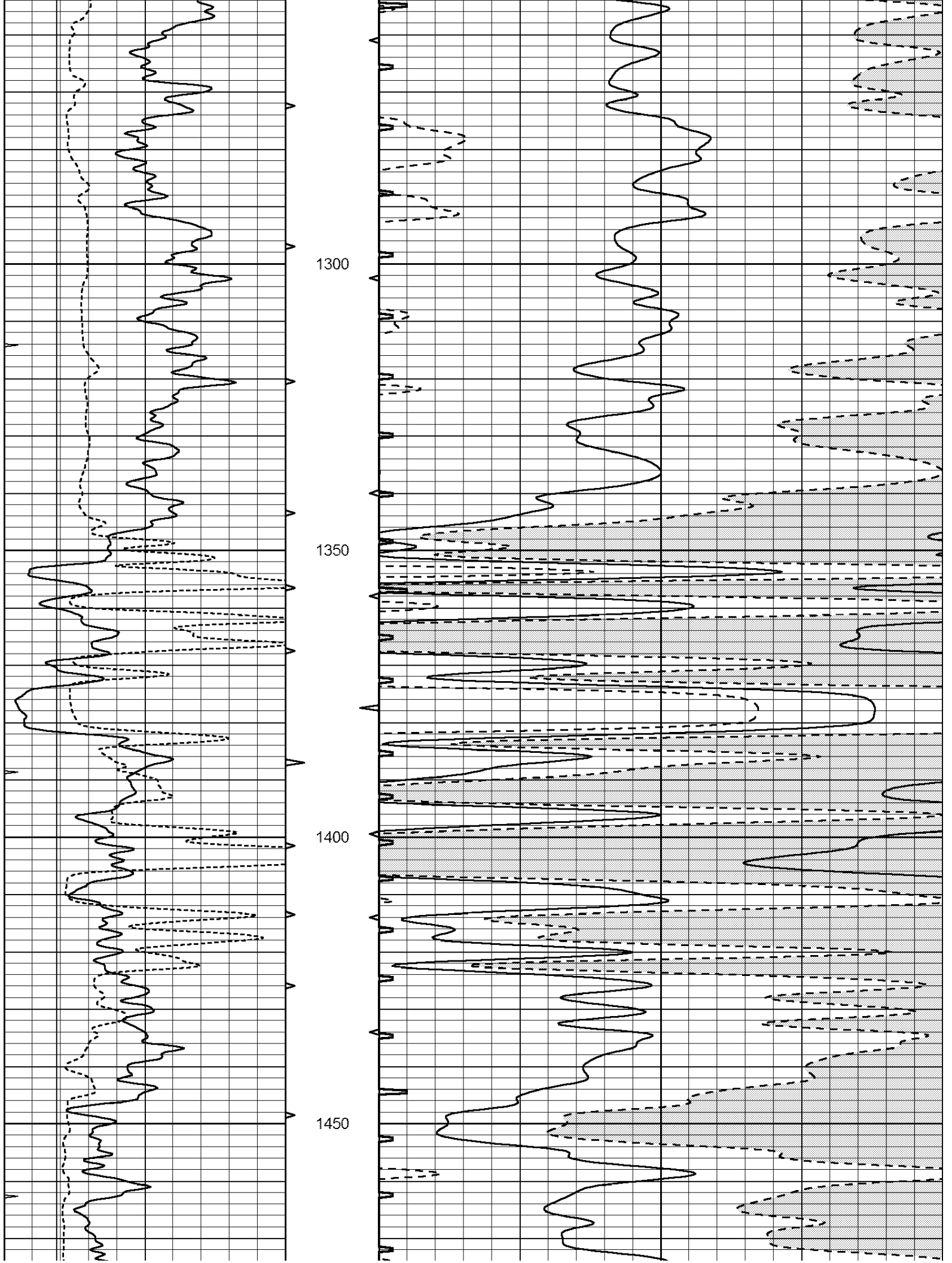
900

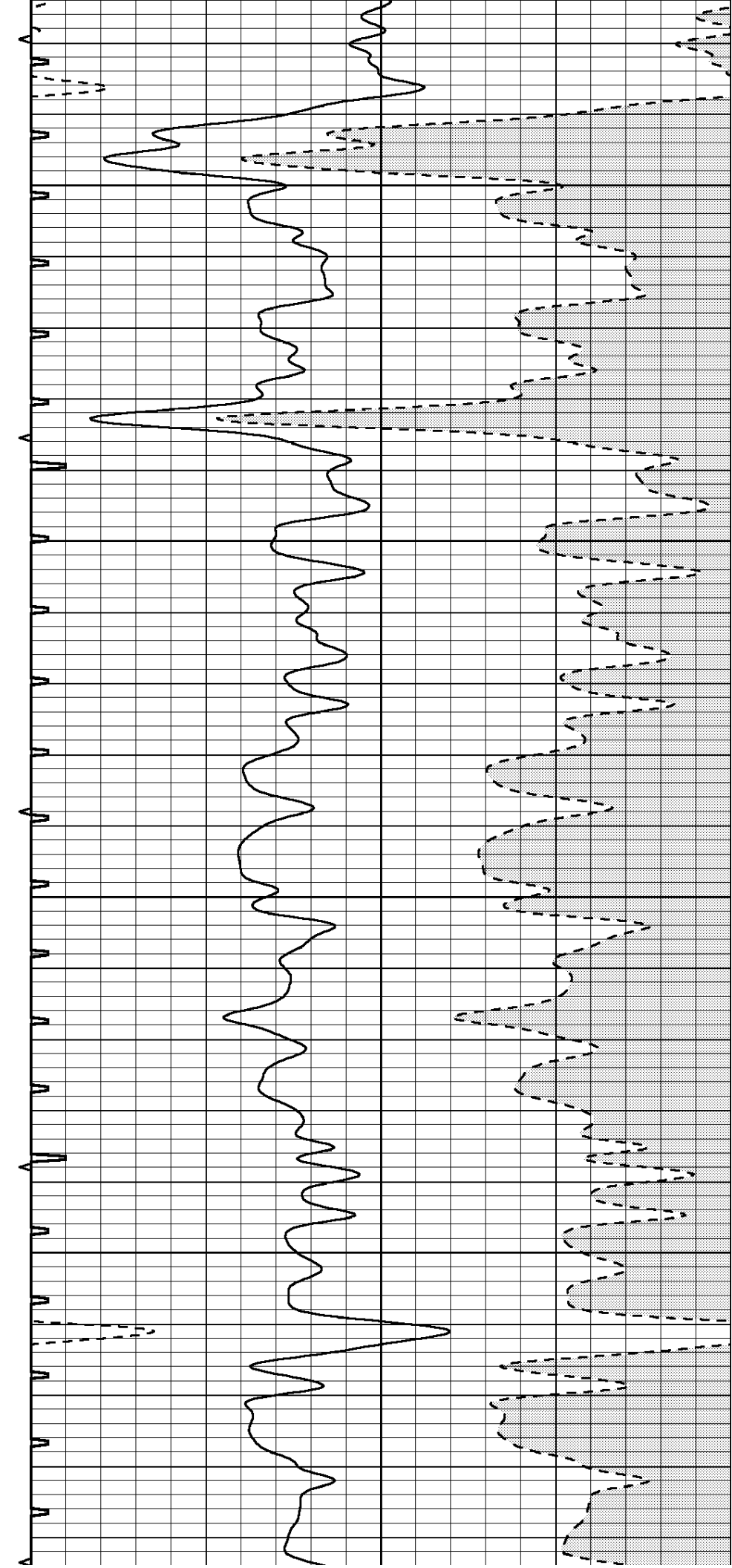
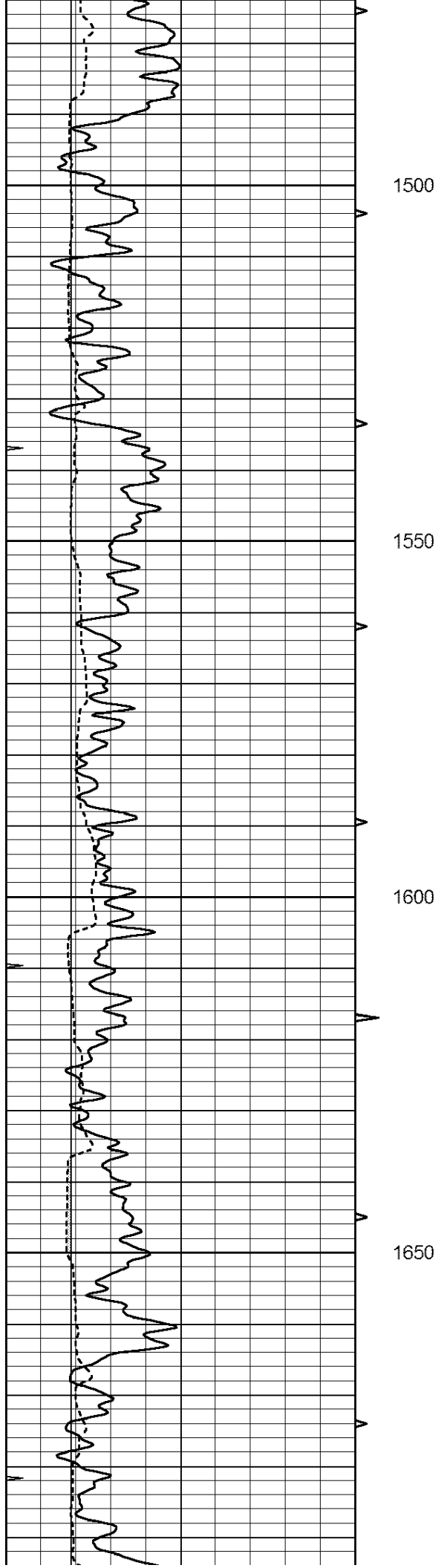
950

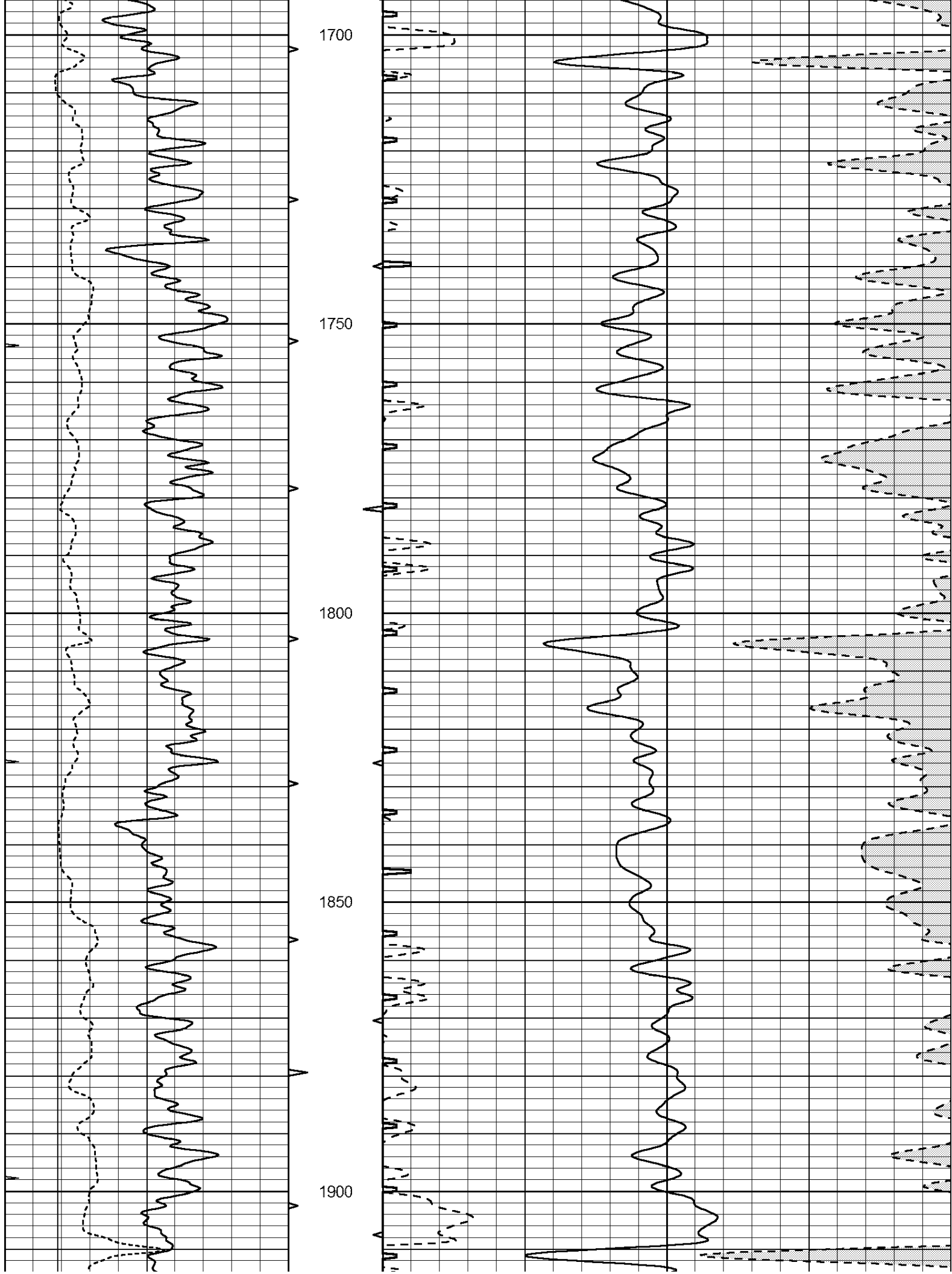
1000

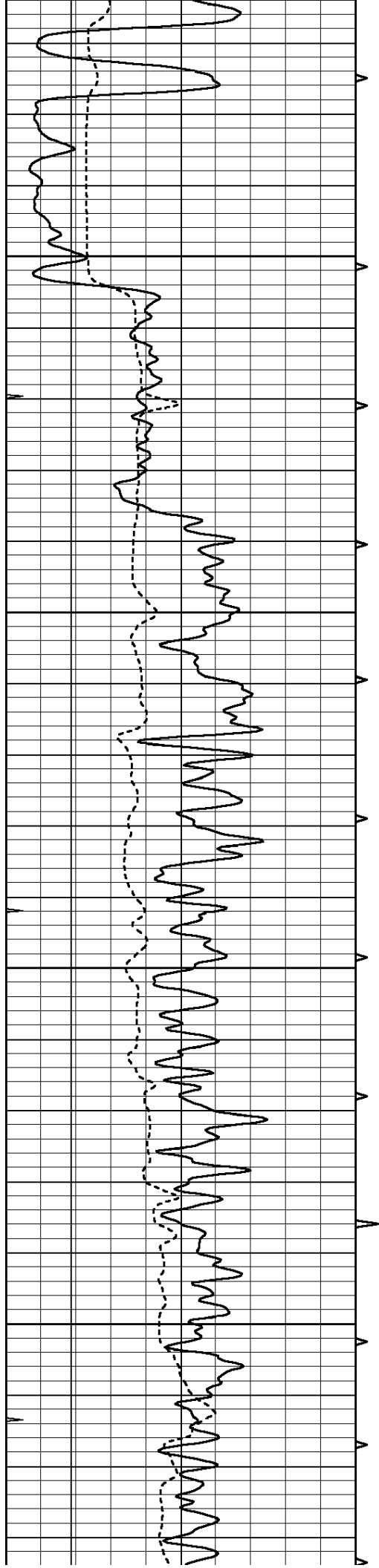










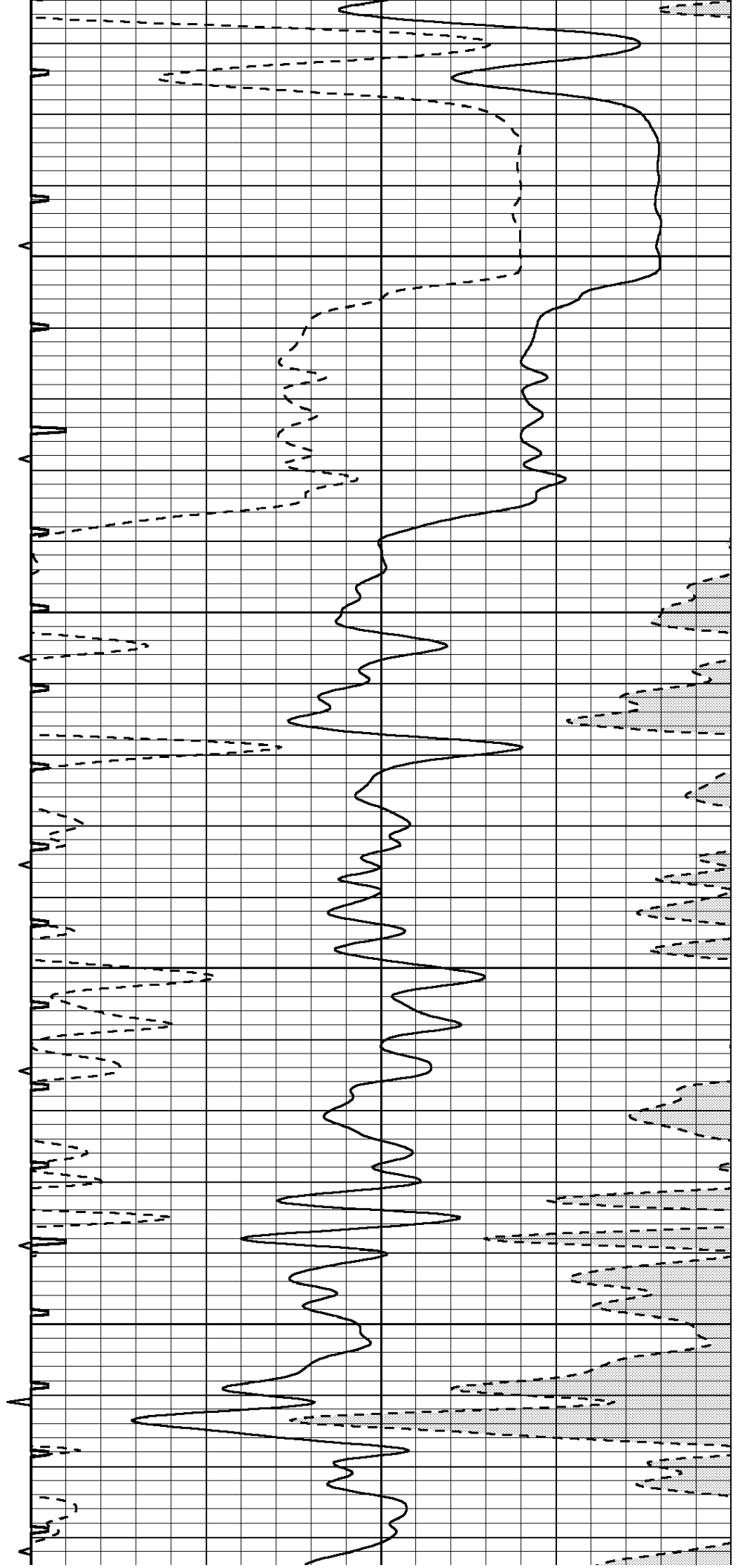


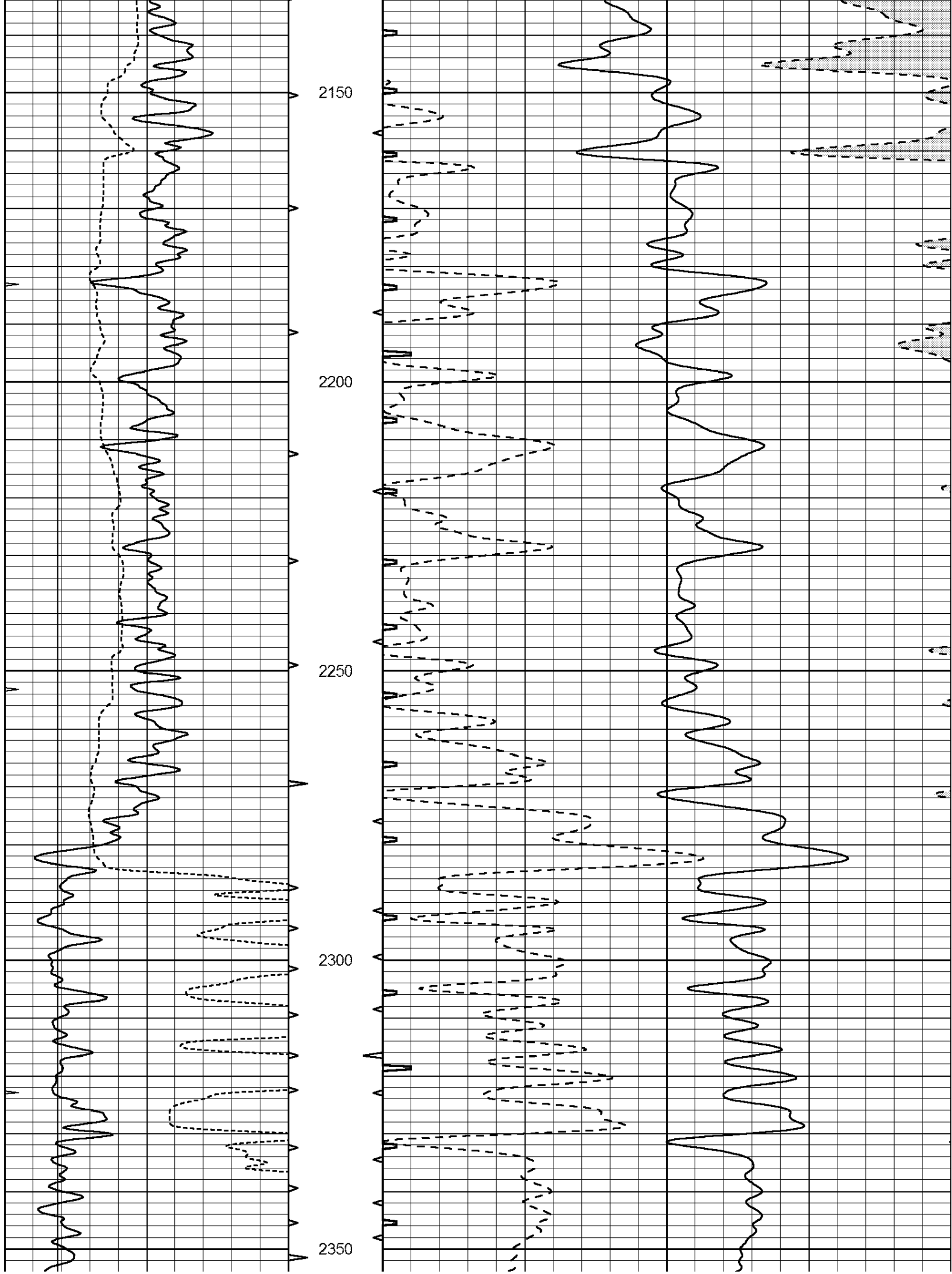
1950

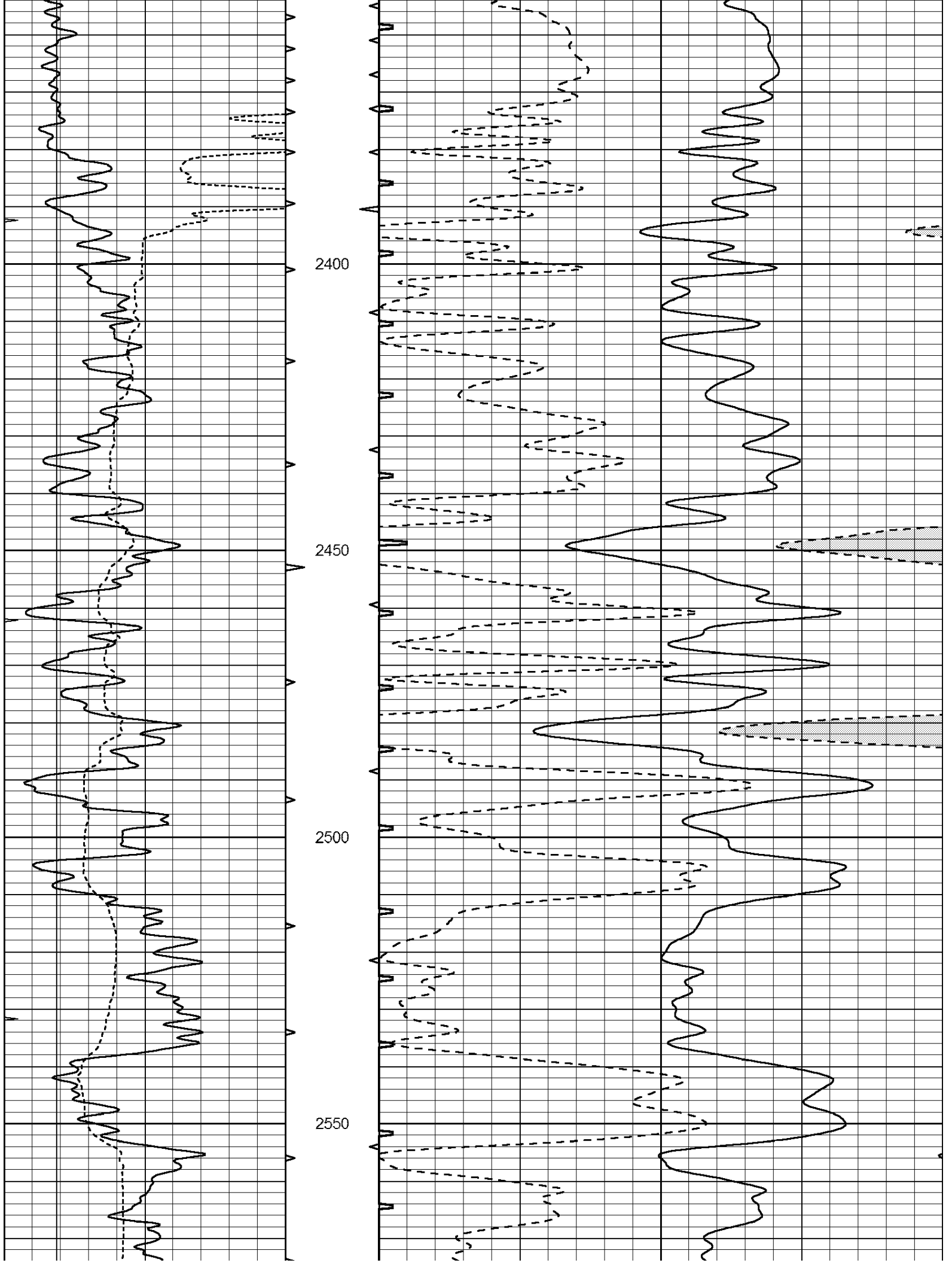
2000

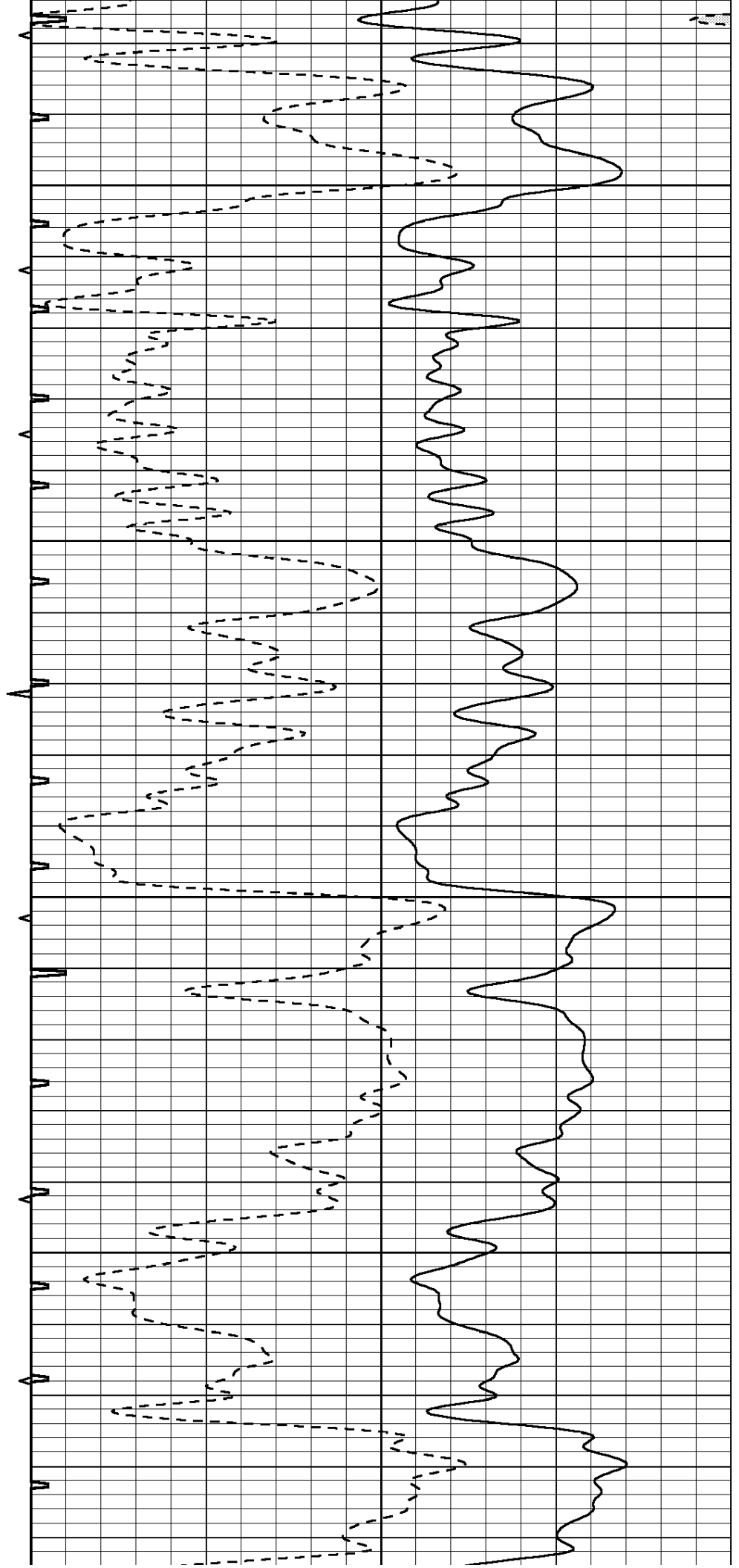
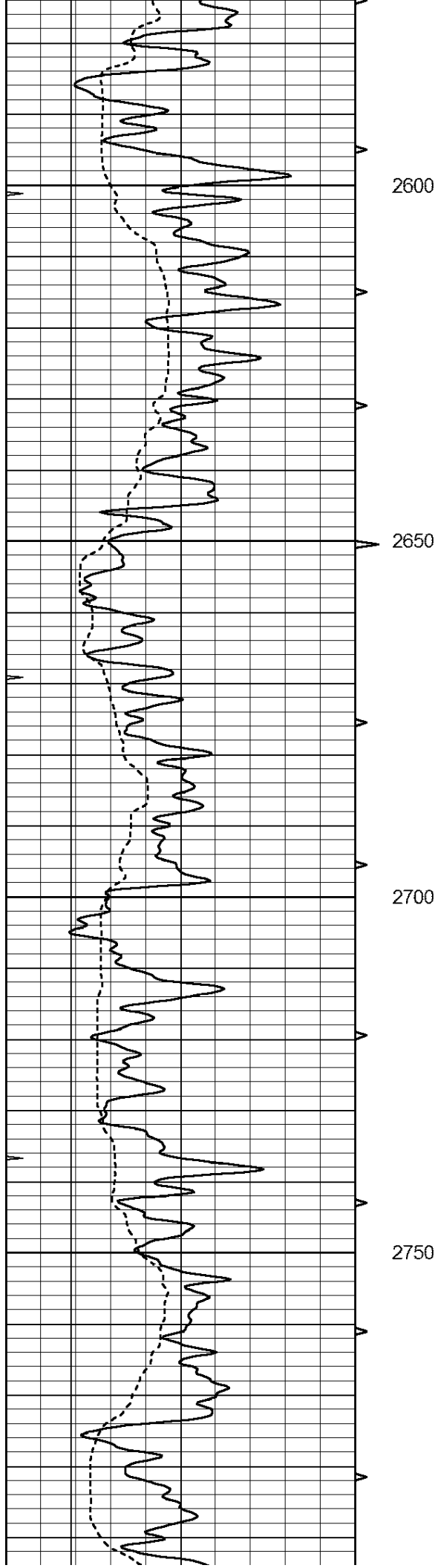
2050

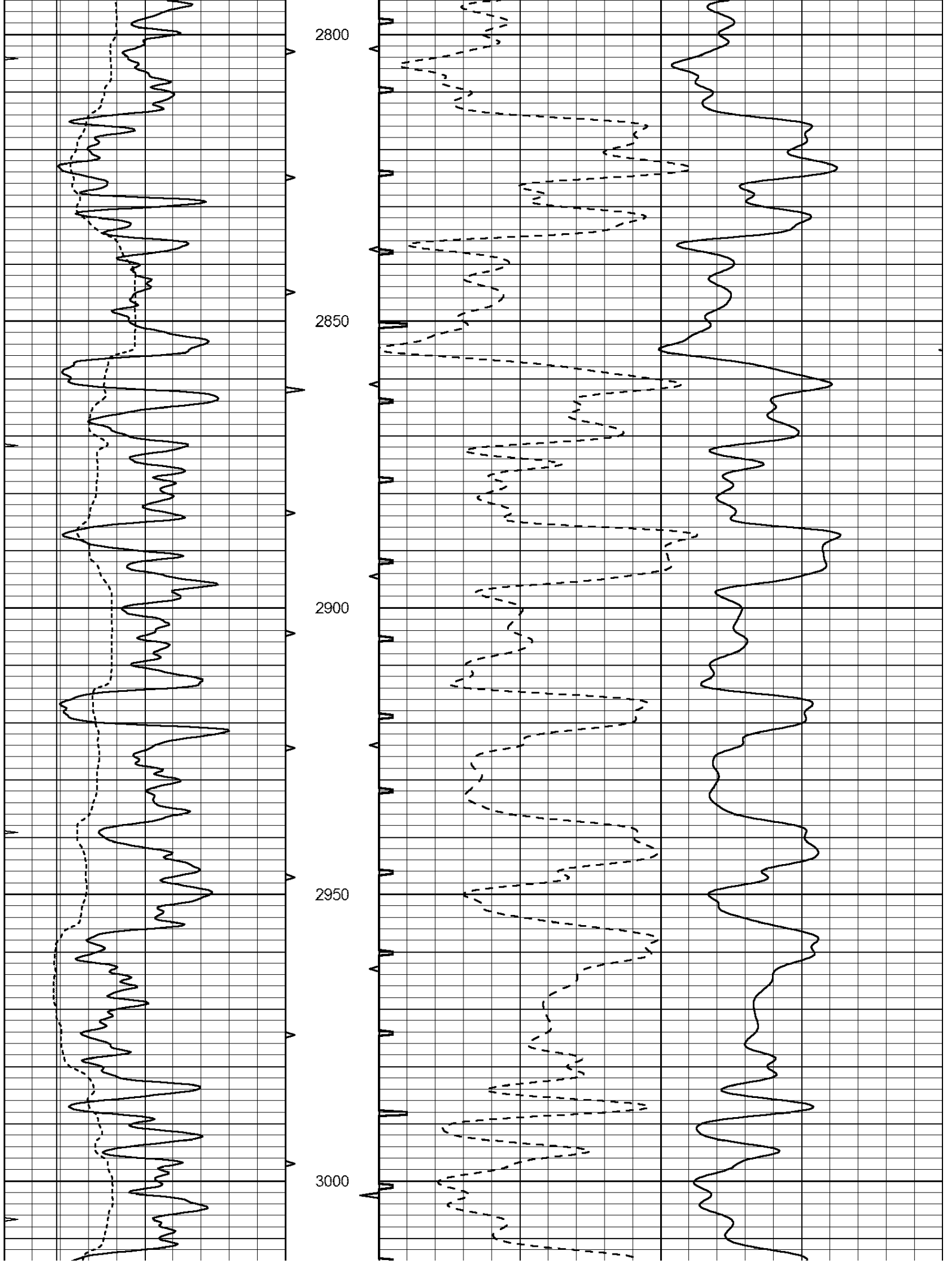
2100

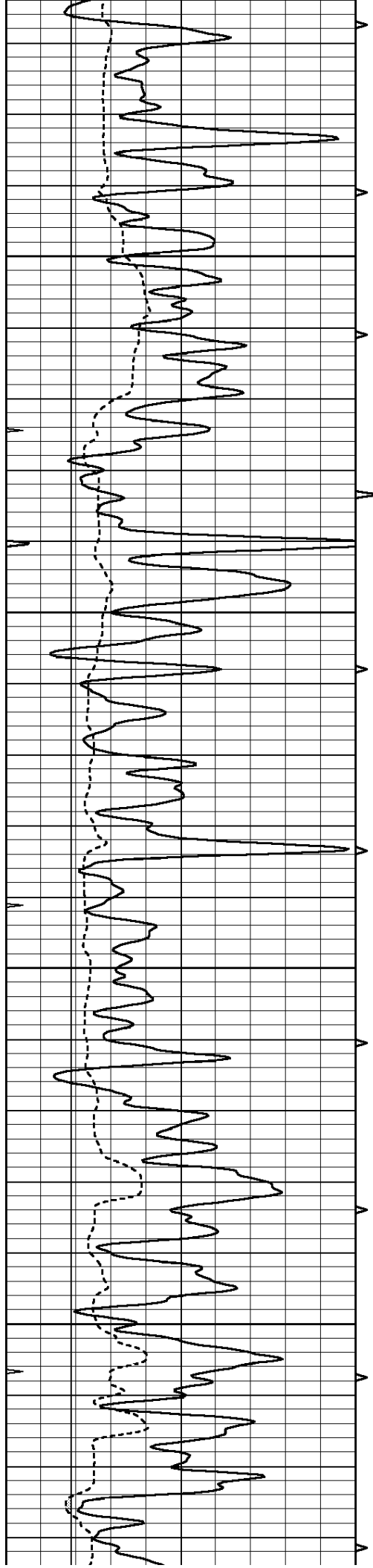










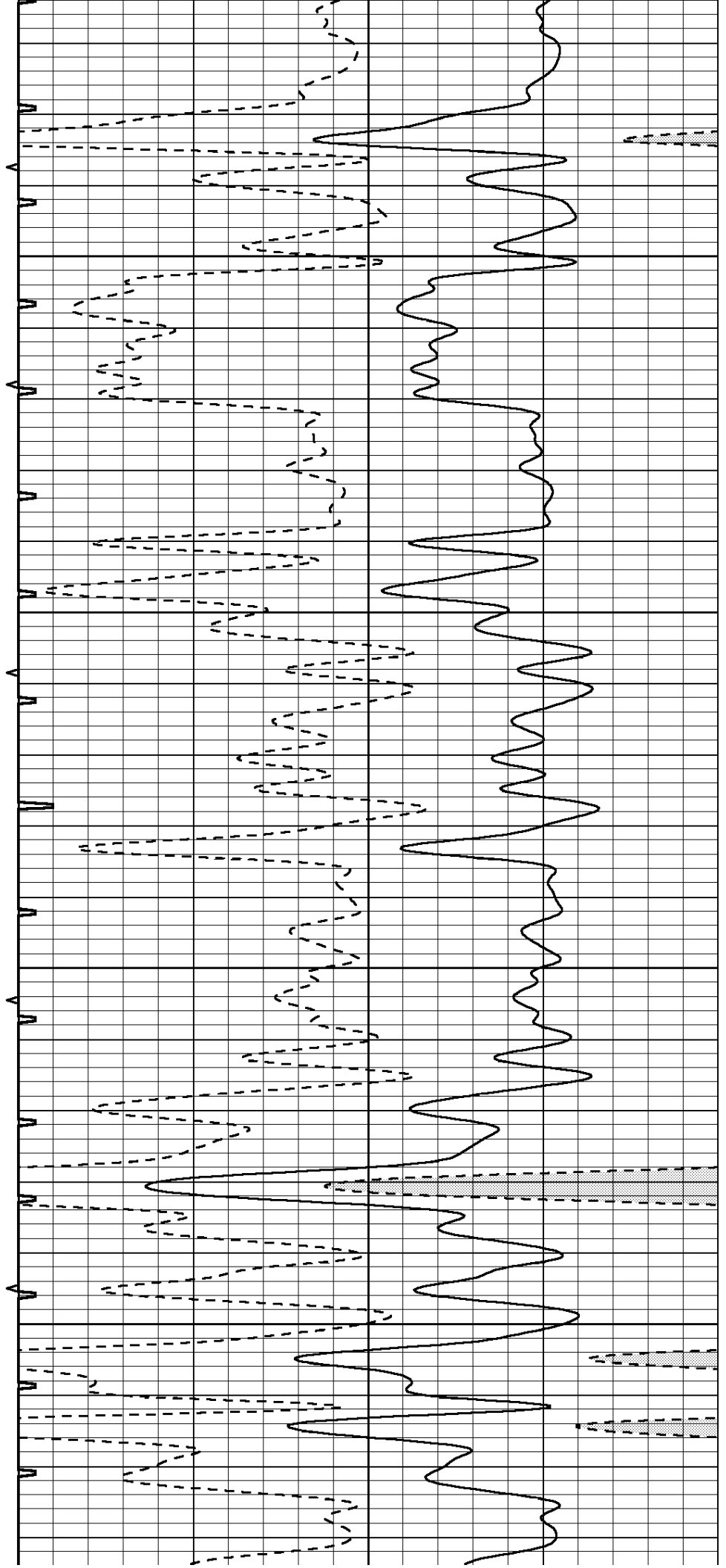


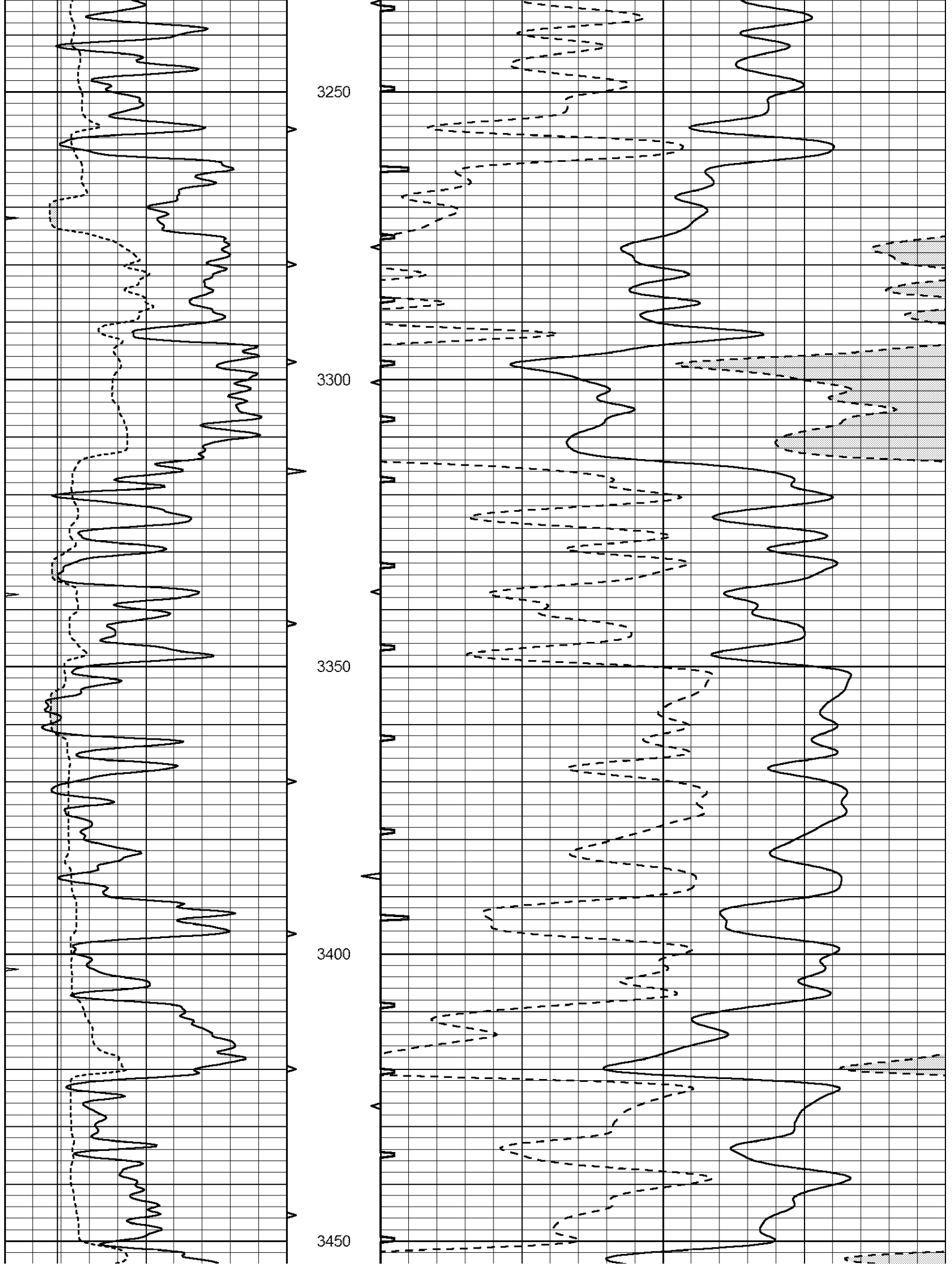
3050

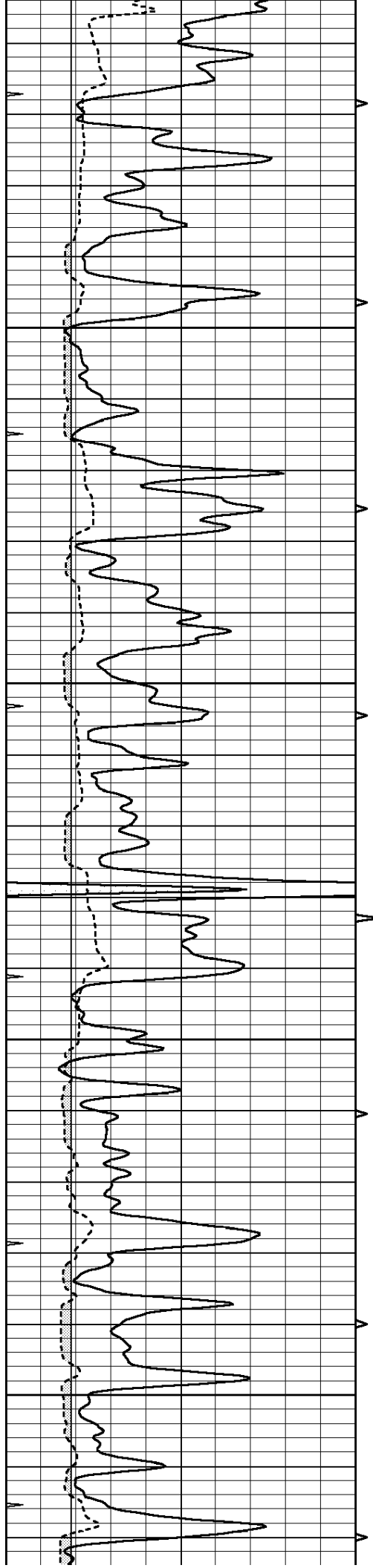
3100

3150

3200





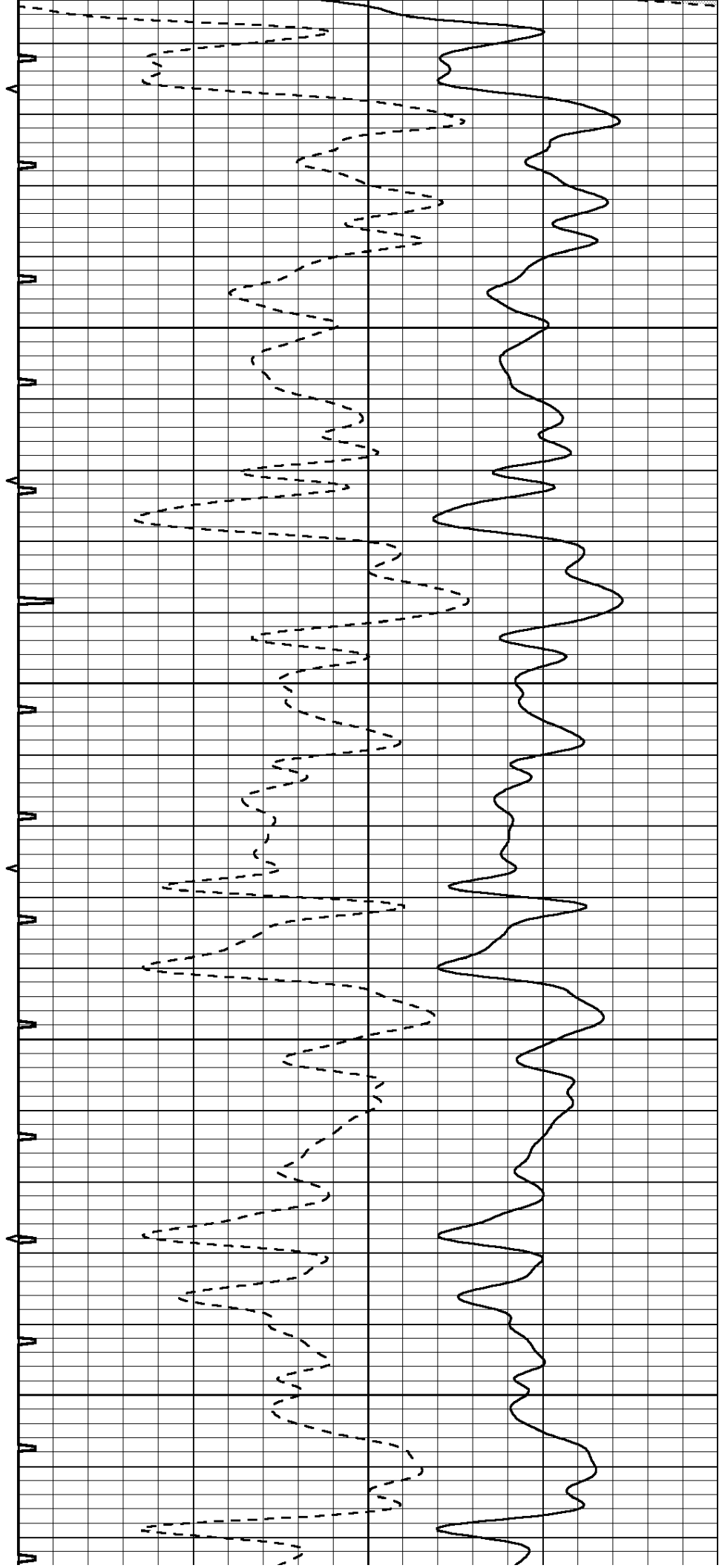


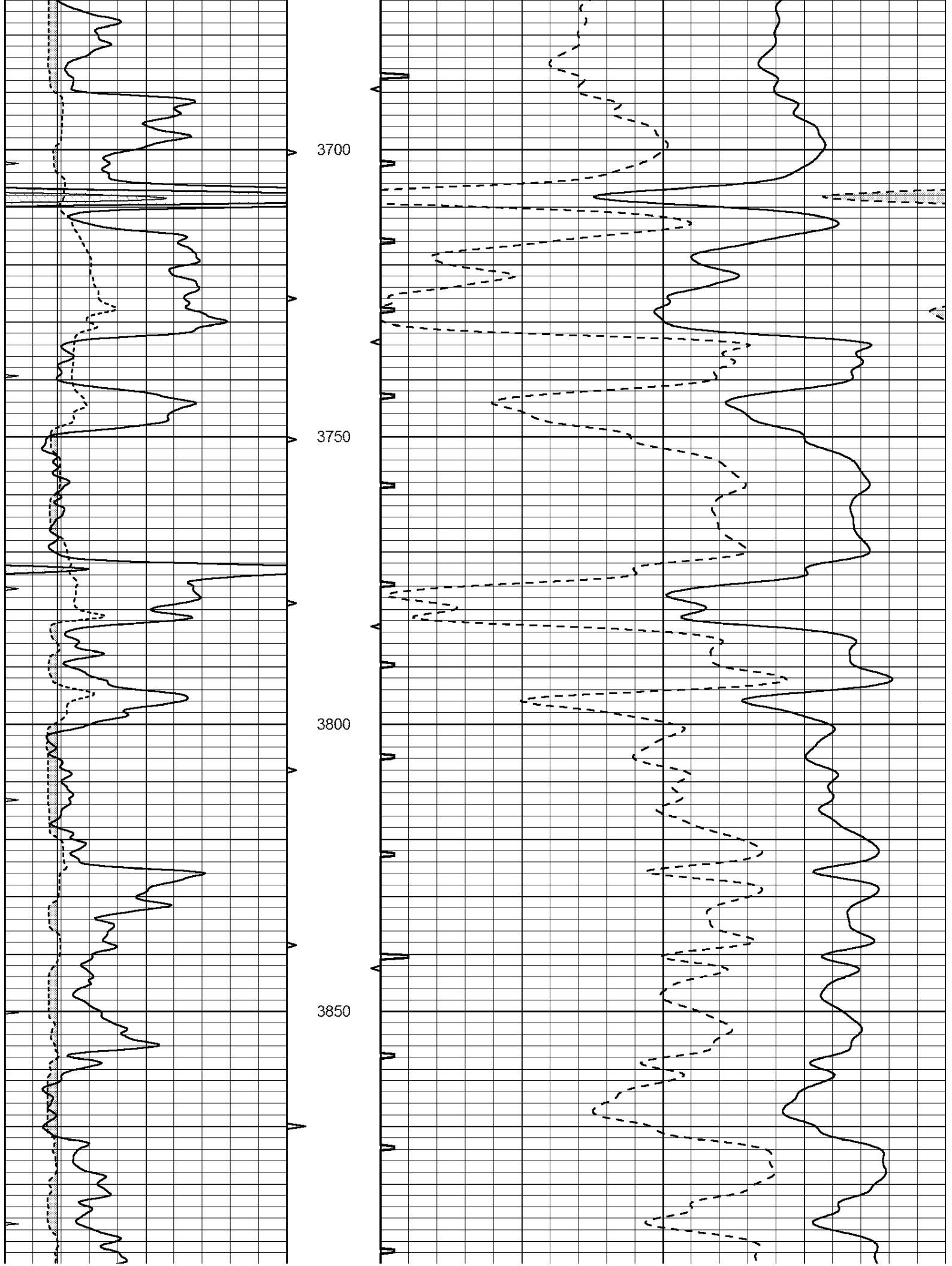
3500

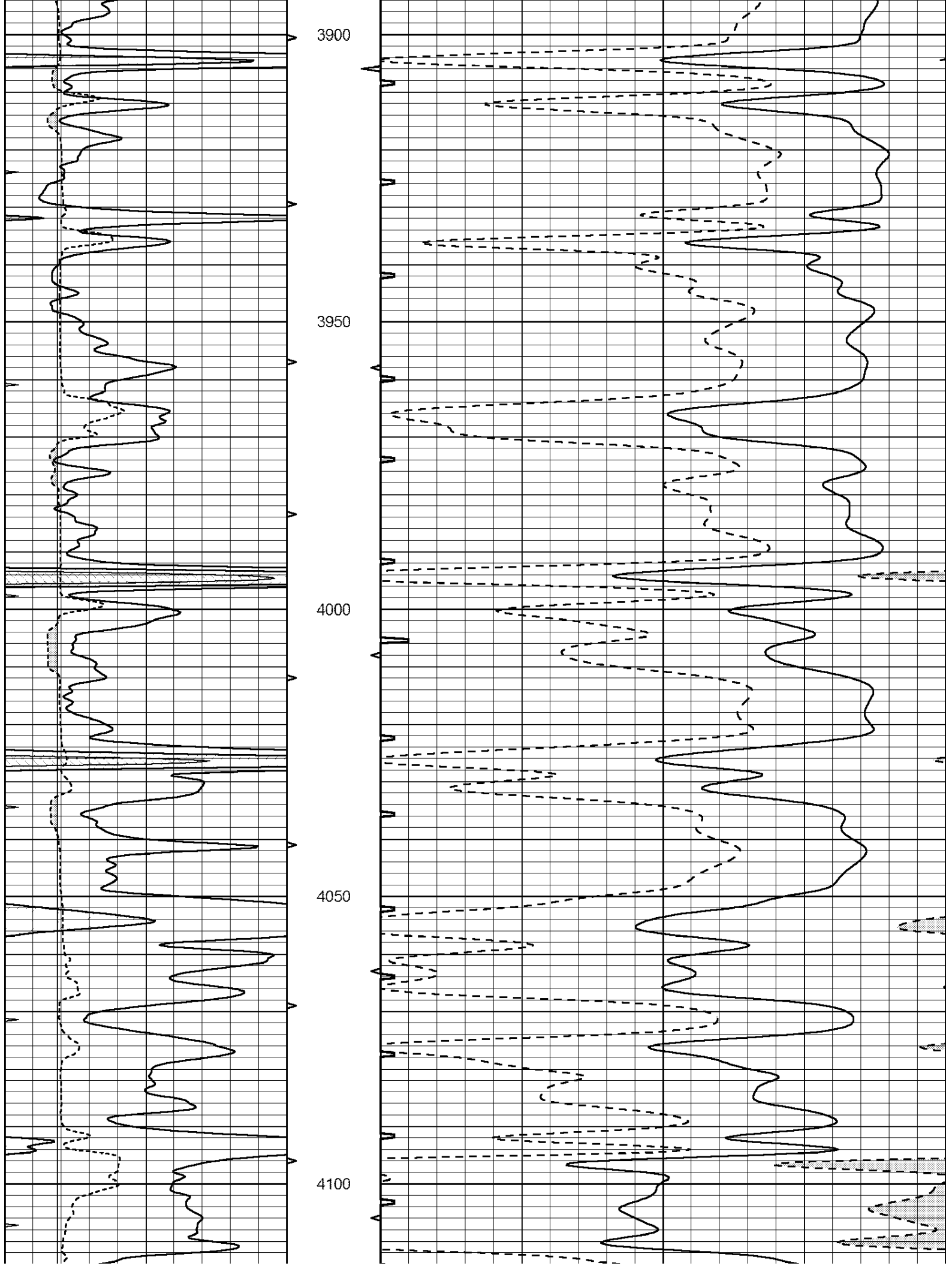
3550

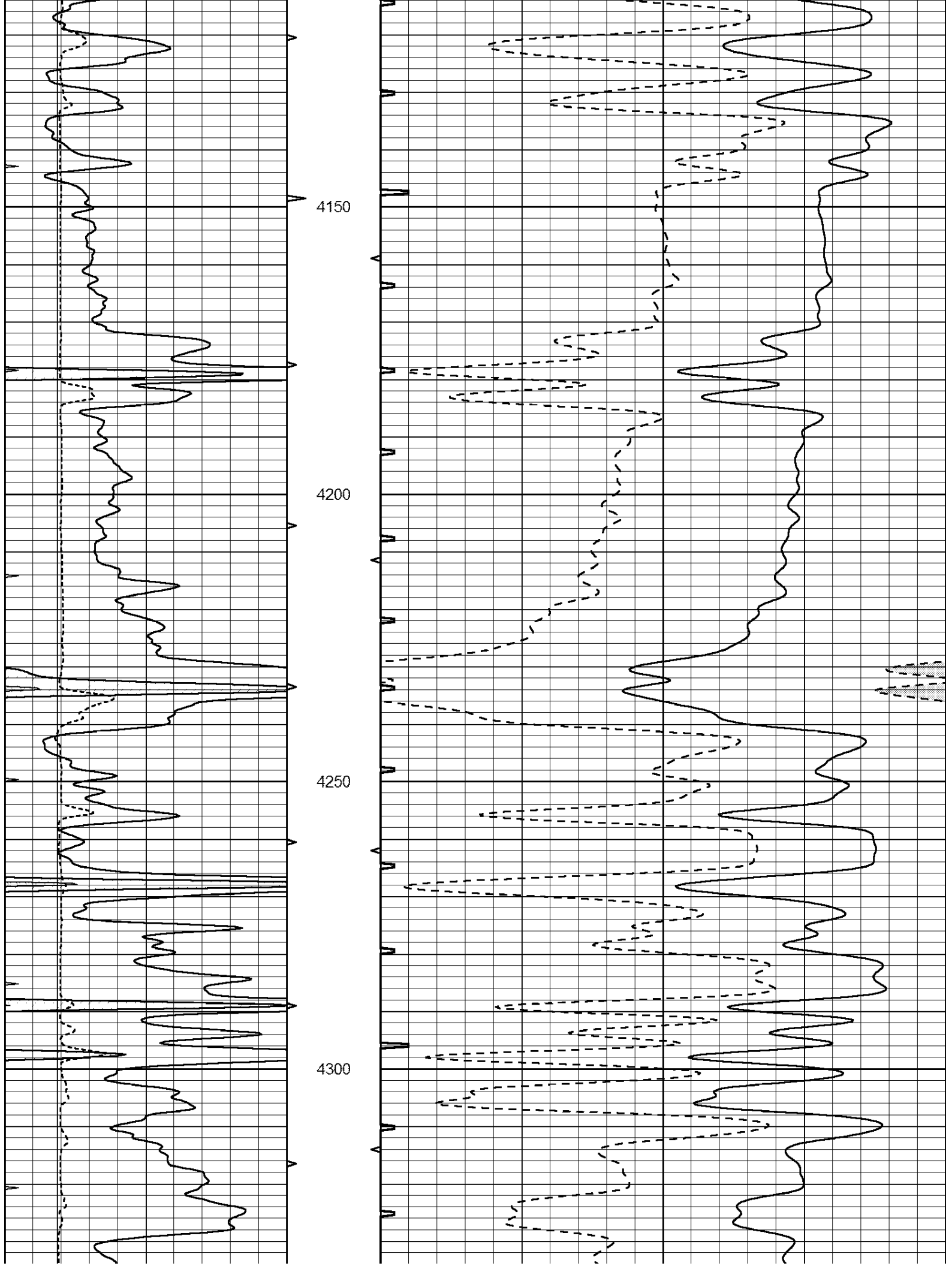
3600

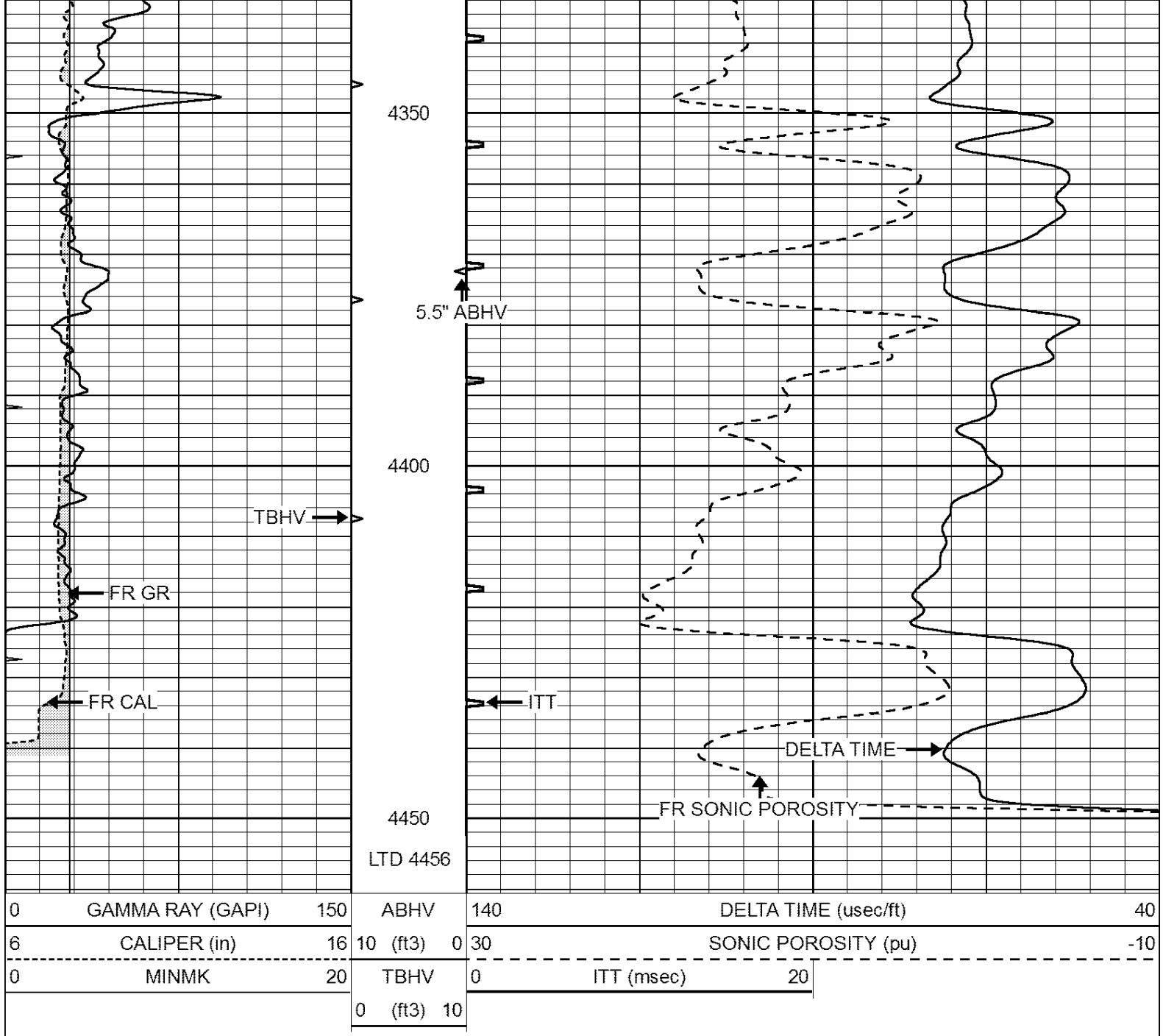
3650











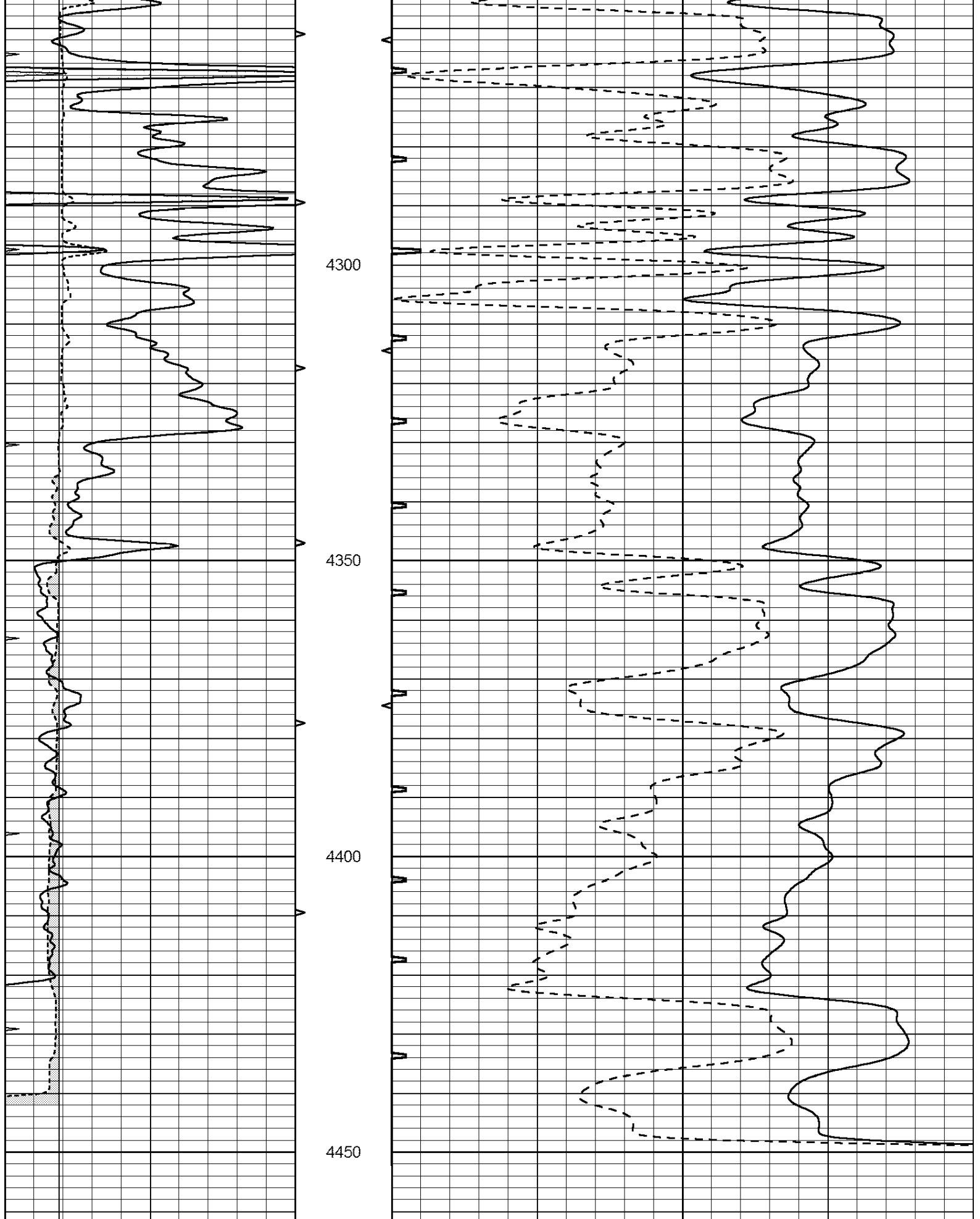
SUPERIOR
Hays,
Kansas

REPEAT SECTION

Database File: 408770pe.db
 Dataset Pathname: pass5.4
 Presentation Format: slt
 Dataset Creation: Fri May 18 02:49:34 2012
 Charted by: Depth in Feet scaled 1:240

0	GAMMA RAY (GAPI)	150	ABHV	140	DELTA TIME (usec/ft)	40	
6	CALIPER (in)	16	10 (ft3)	0	30	SONIC POROSITY (pu)	-10
0	MINMK	20	TBHV	0	ITT (msec)	20	
			0 (ft3)	10			





0	GAMMA RAY (GAPI)	150	ABHV	140	DELTA TIME (usec/ft)	40	
6	CALIPER (in)	16	10 (ft3)	0	30	SONIC POROSITY (pu)	-10
0	MINMK	20	TBHV	0	ITT (msec)	20	

