



SUPERIOR
Hays,
Kansas

SONIC
LOG

Company MULL DRILLING COMPANY, INC.
Well #1-26 ALBIN "A"
Field WHITNEY WEST
County GOVE
State KANSAS

Company MULL DRILLING COMPANY, INC.
Well #1-26 ALBIN "A"
Field WHITNEY WEST
County GOVE State KANSAS

Location: API # : 15-063-21998-0000
510' FNL & 2250' FWL
SEC 26 TWP 15S RGE 27W
Permanent Datum GROUND LEVEL Elevation 2486
Log Measured From KELLY BUSHING 5' A.G.L.
Drilling Measured From KELLY BUSHING
Other Services
CDL/CNL/PE
DIL/MEL
Elevation
K.B. 2491
D.F. 2489
G.L. 2486

Date	5/30/12
Run Number	TWO
Depth Driller	4480
Depth Logger	4480
Bottom Logged Interval	4468
Top Log Interval	200
Casing Driller	8 5/8"@215'
Casing Logger	220
Bit Size	7 7/8"
Type Fluid in Hole	CHEMICAL MUD
Density / Viscosity	9.4/56
pH / Fluid Loss	9.0/9.2
Source of Sample	FLOWLINE
Rm @ Meas. Temp	.800@92F
Rmt @ Meas. Temp	.600@92F
Rmc @ Meas. Temp	.960@92F
Source of Rmf / Rmc	MEASUREMENT
Rm @ BHT	.613@120F
Time Circulation Stopped	4 HOURS
Time Logger on Bottom	2:45 P.M.
Maximum Recorded Temperature	120F
Equipment Number	4010
Location	HAYS, KANSAS
Recorded By	JEFF LUEBBERS
Witnessed By	KEVIN KESSLER

<<< Fold Here >>>

All interpretations are opinions based on inferences from electrical or other measurements and we cannot and do not guarantee the accuracy or correctness of any interpretation, and we shall not, except in the case of gross or willful negligence on our part, be liable or responsible for any loss, costs, damages, or expenses incurred or sustained by anyone resulting from any interpretation made by any of our officers, agents or employees. These interpretations are also subject to our general terms and conditions set out in our current Price Schedule.

Comments

THANK YOU FOR USING SUPERIOR WELL SERVICE HAYS, KANSAS (785) 628-6395
DIRECTIONS
PENDENNIS, KS. & HWY 4, 6 1/2N. ON "RED CHIEF RD." TO "RD. C", 1E. TO CURVE. CONTINUE 3/4
MORE E. ON RIGHT FORK

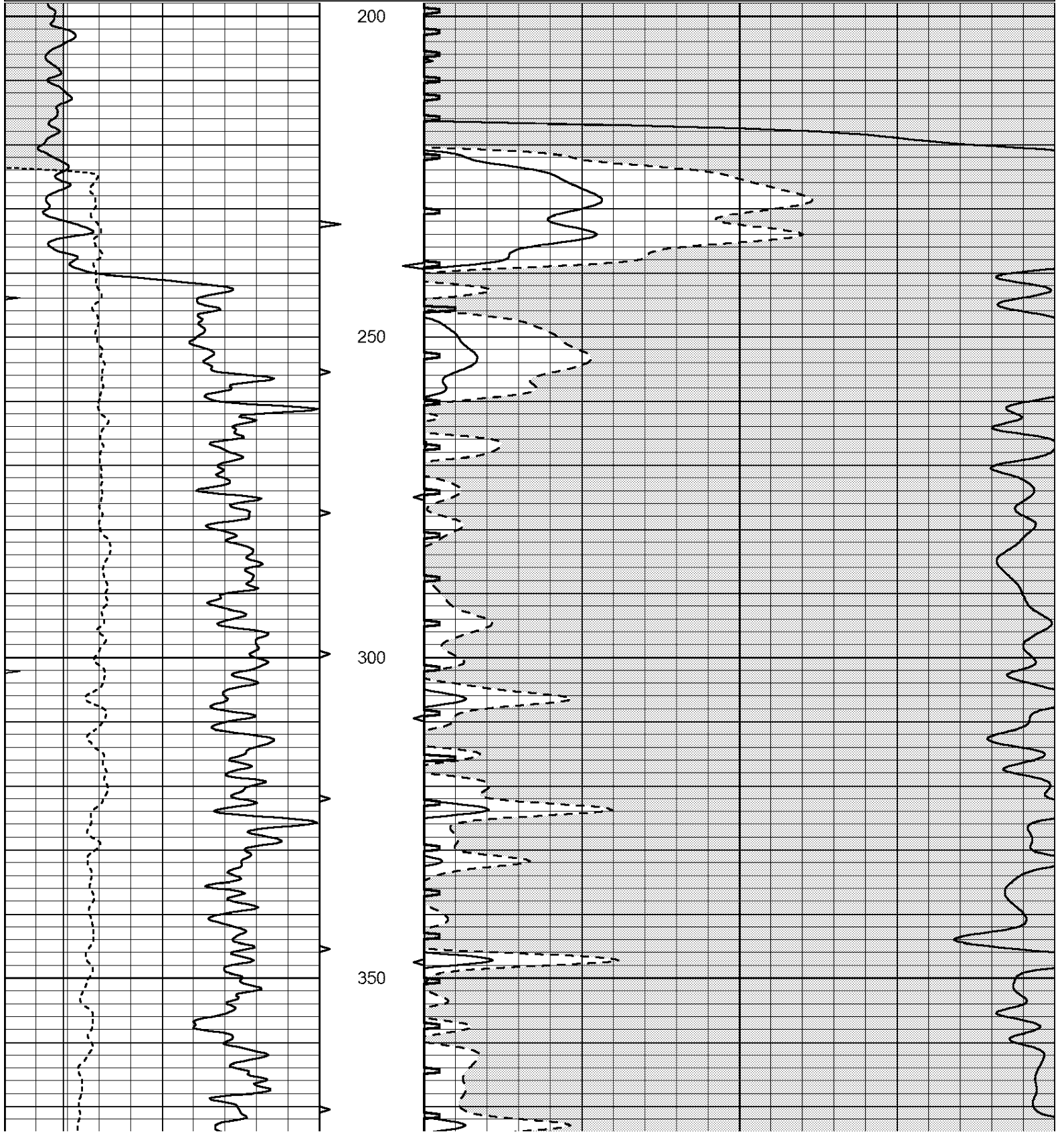


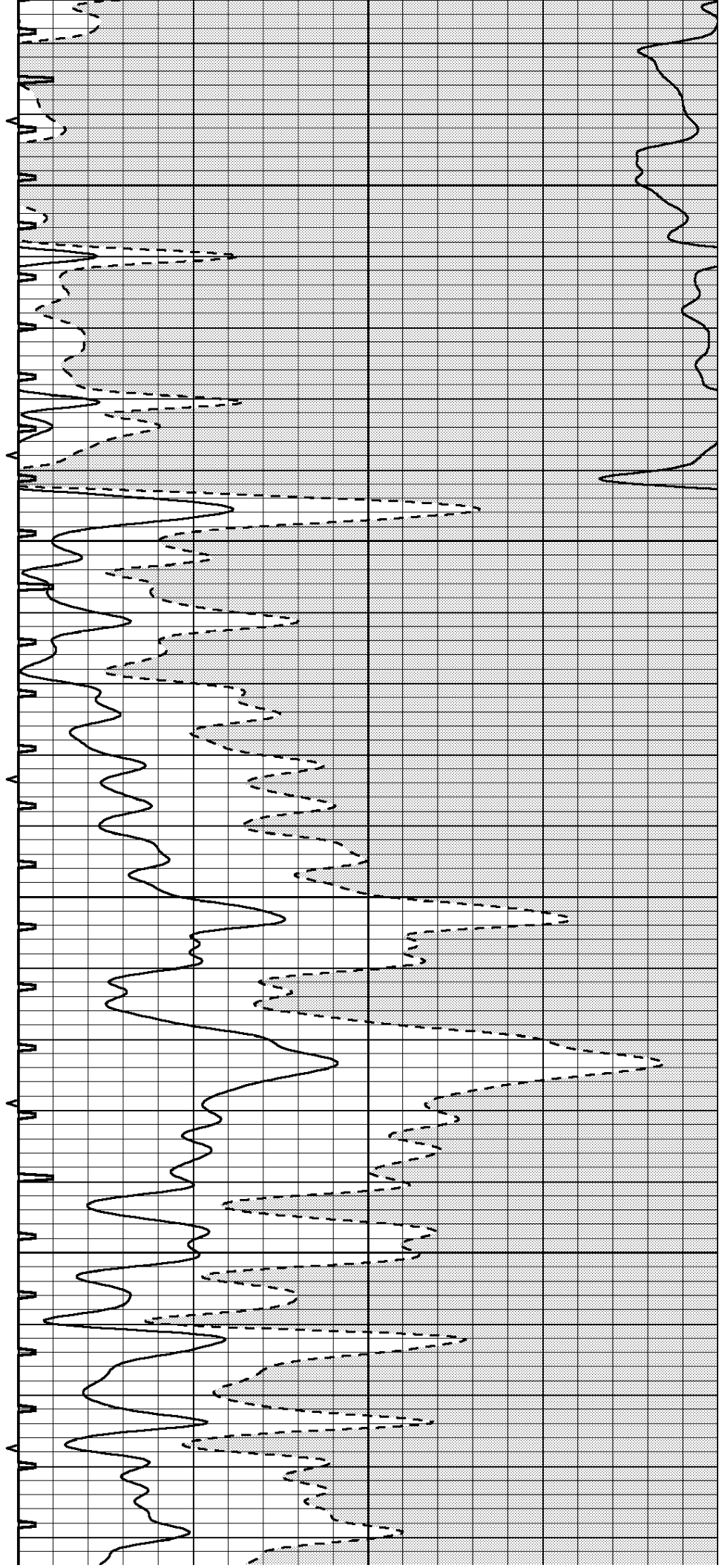
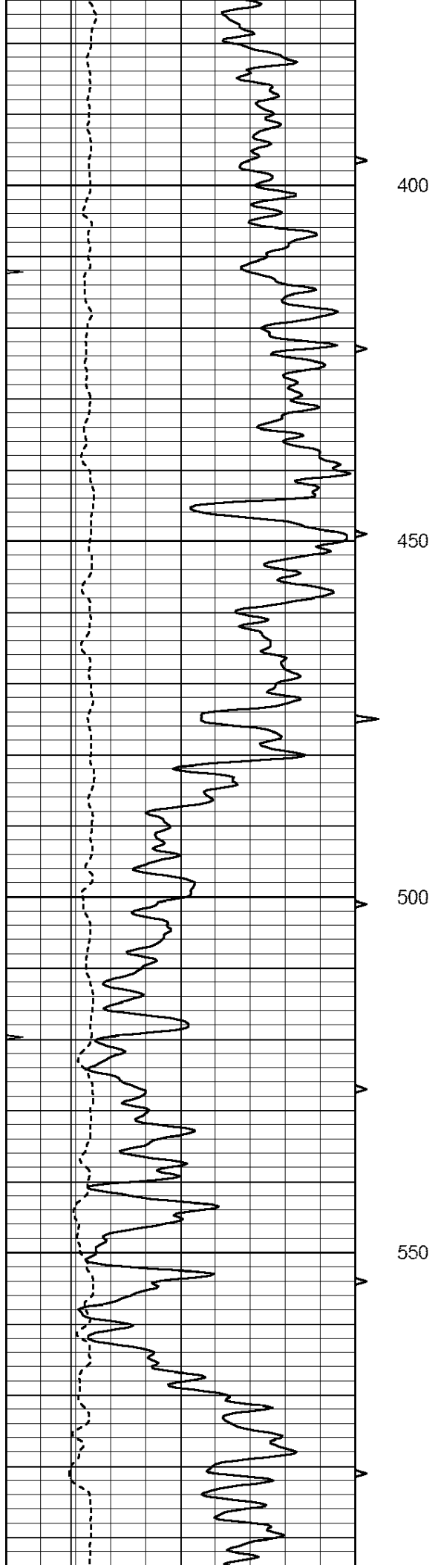
SUPERIOR
Hays,
Kansas

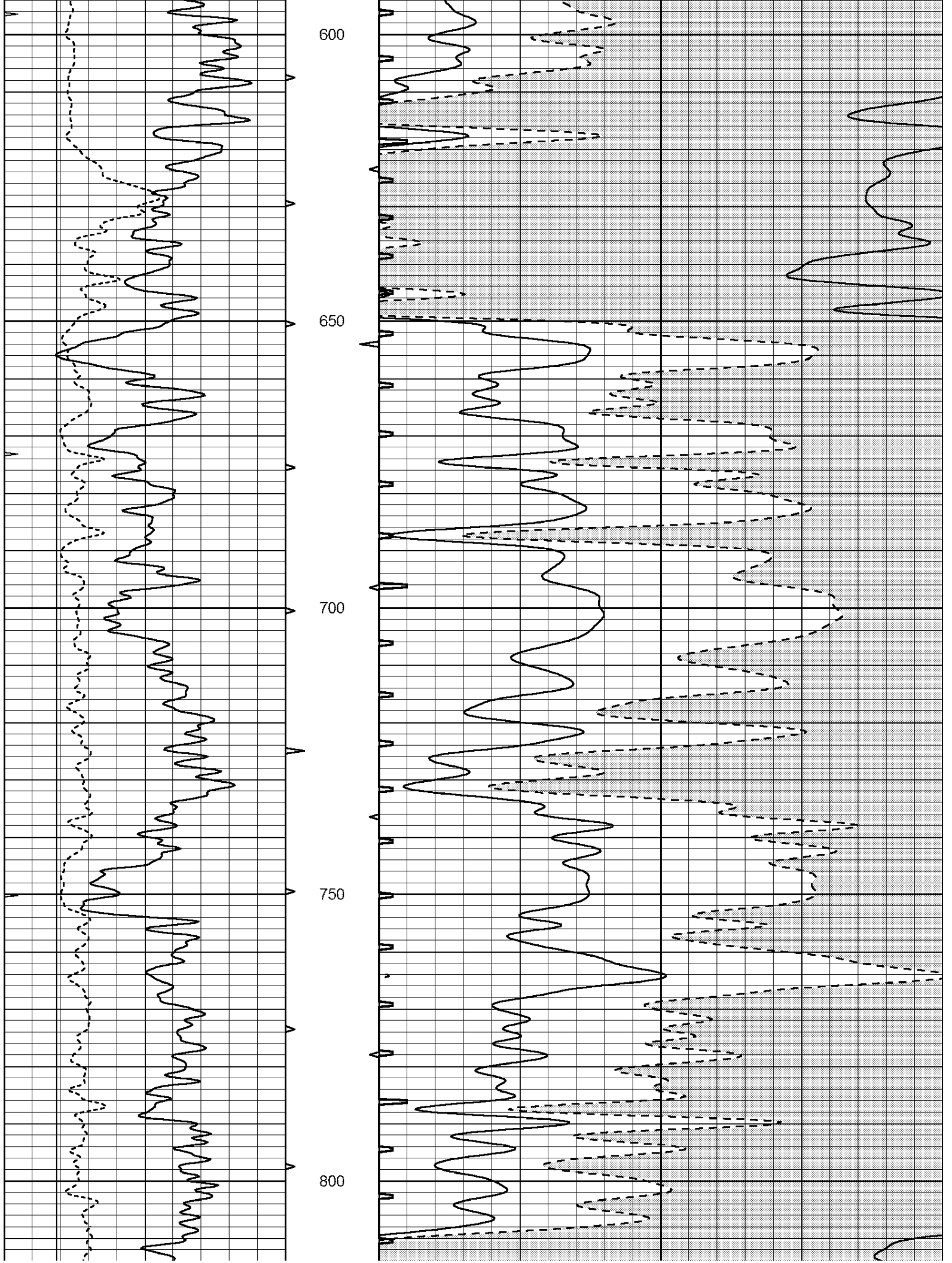
MAIN SECTION

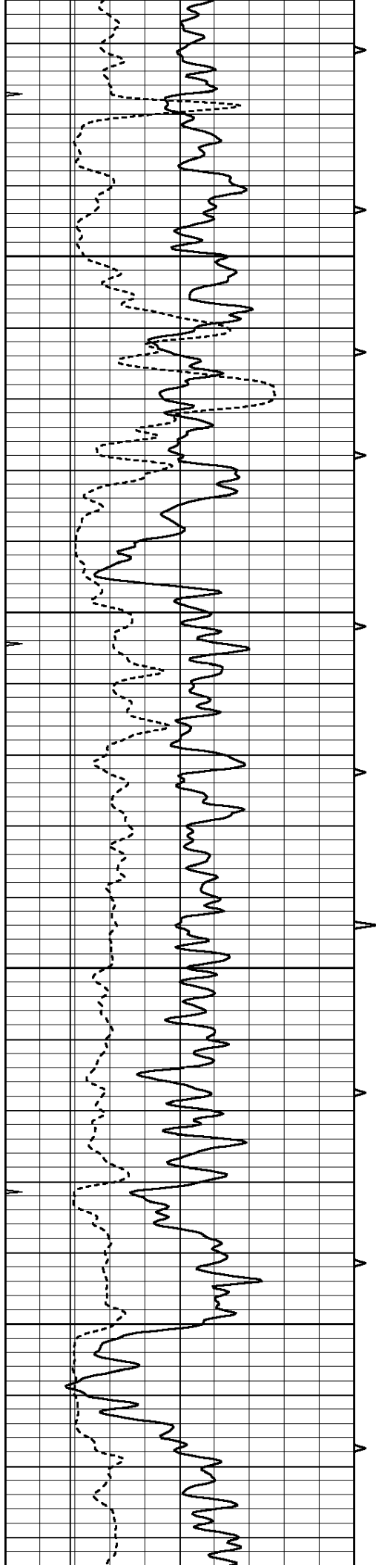
Database File: 409130pe.db
 Dataset Pathname: pass6.5
 Presentation Format: slt
 Dataset Creation: Wed May 30 18:34:36 2012
 Charted by: Depth in Feet scaled 1:240

0	GAMMA RAY (GAPI)	150	ABHV	140	DELTA TIME (usec/ft)	40	
6	CALIPER (in)	16	10 (ft3)	0	30	SONIC POROSITY (pu)	-10
0	MINMK	20	TBHV	0	ITT (msec)	20	
			0 (ft3)	10			







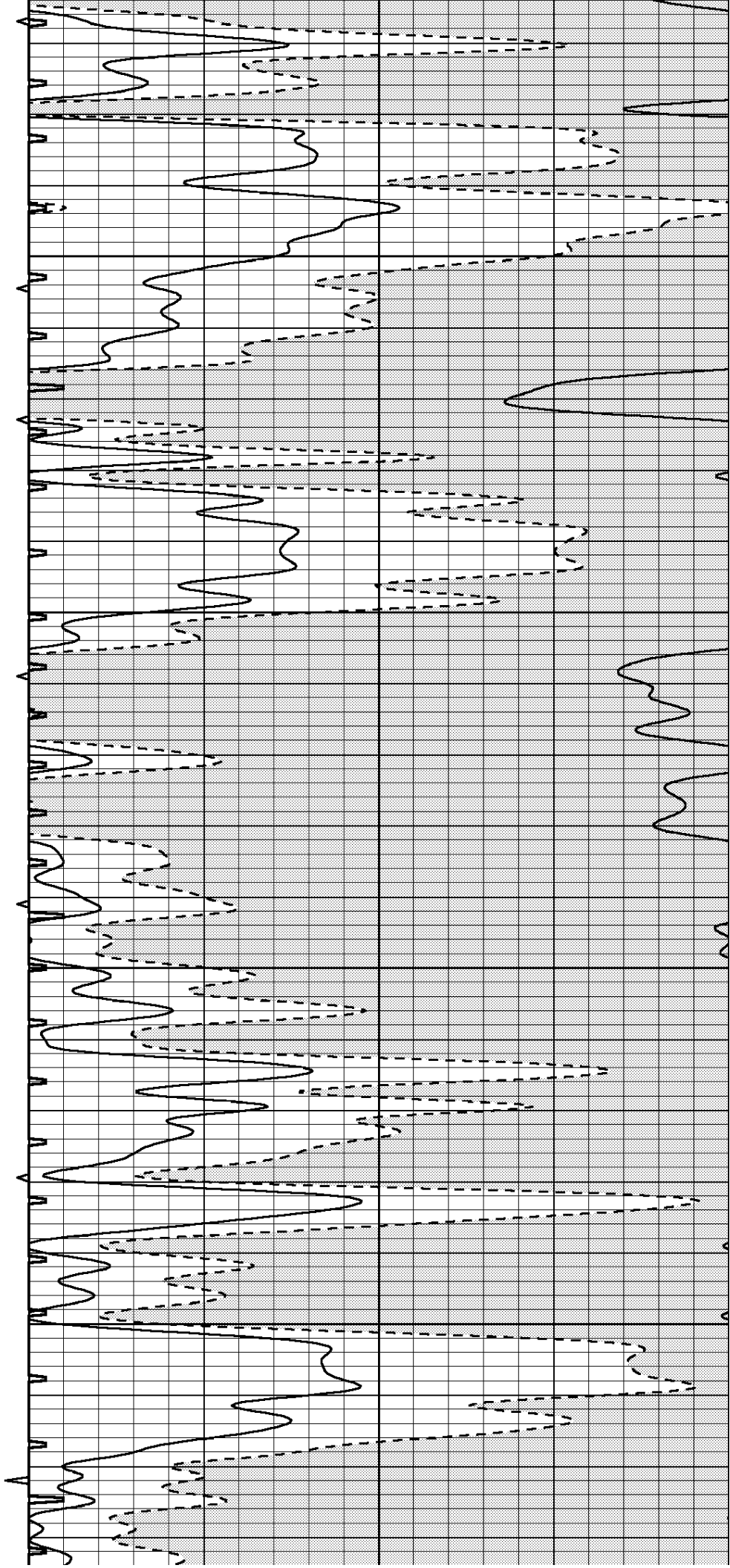


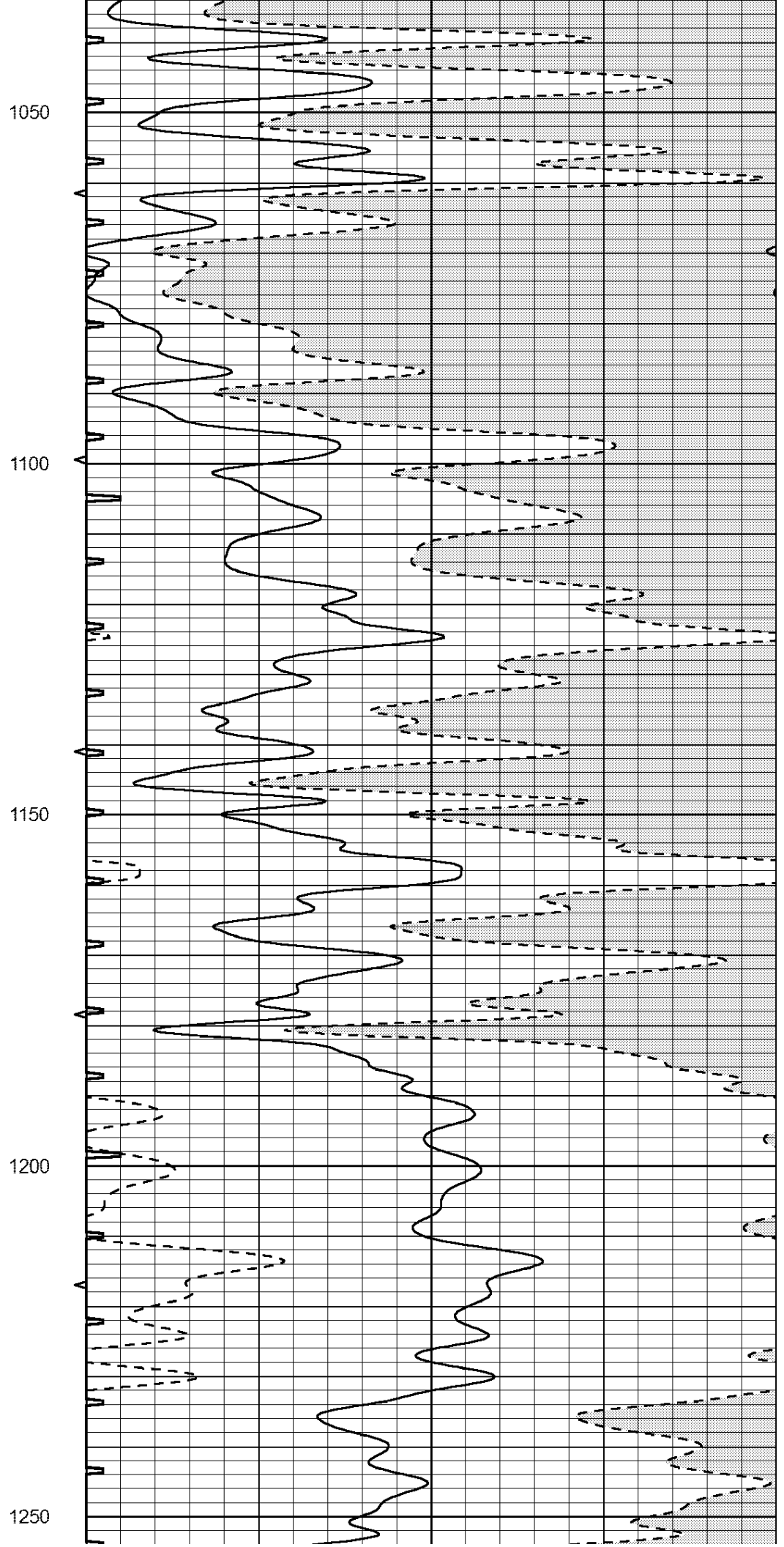
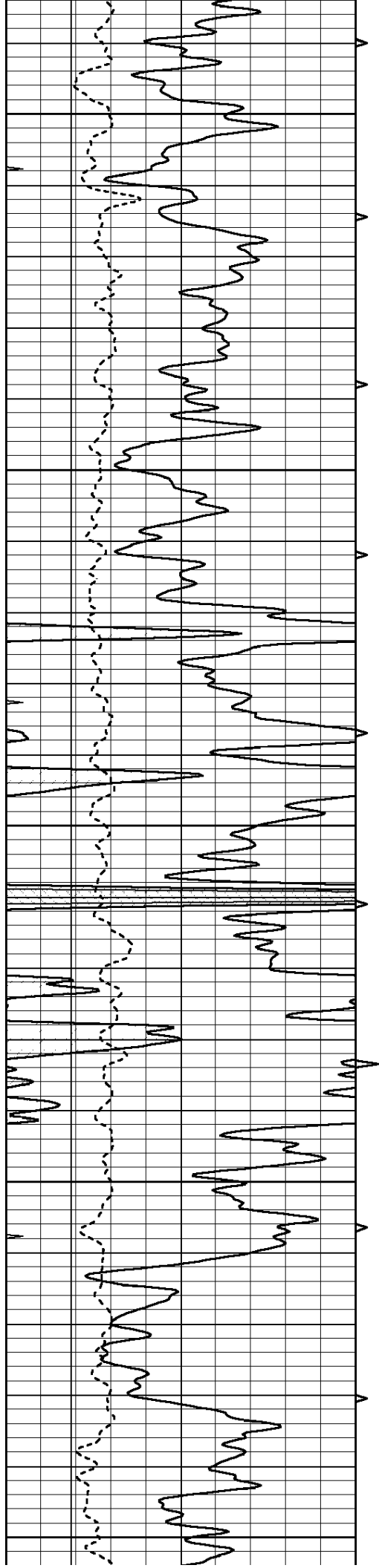
850

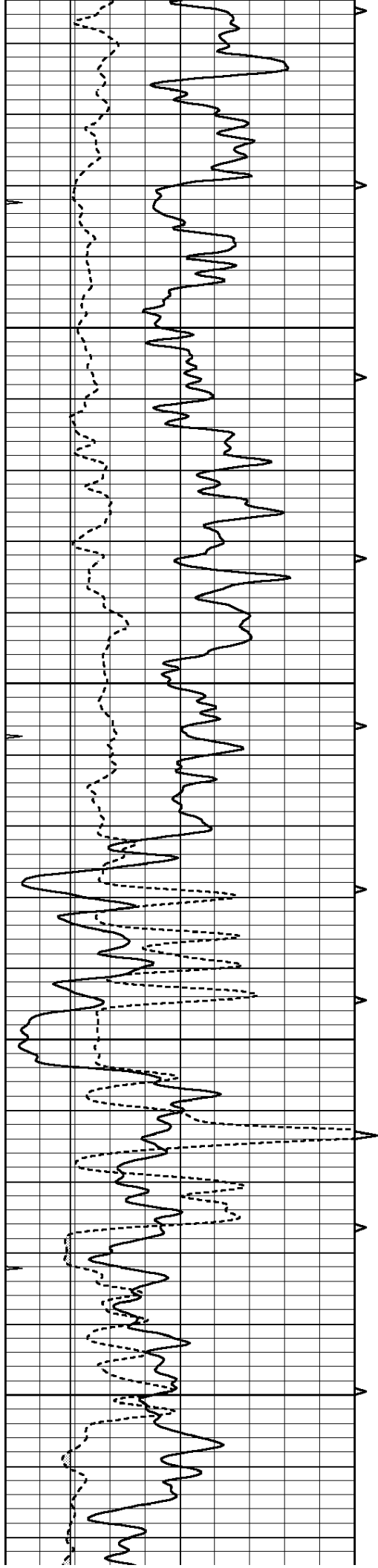
900

950

1000





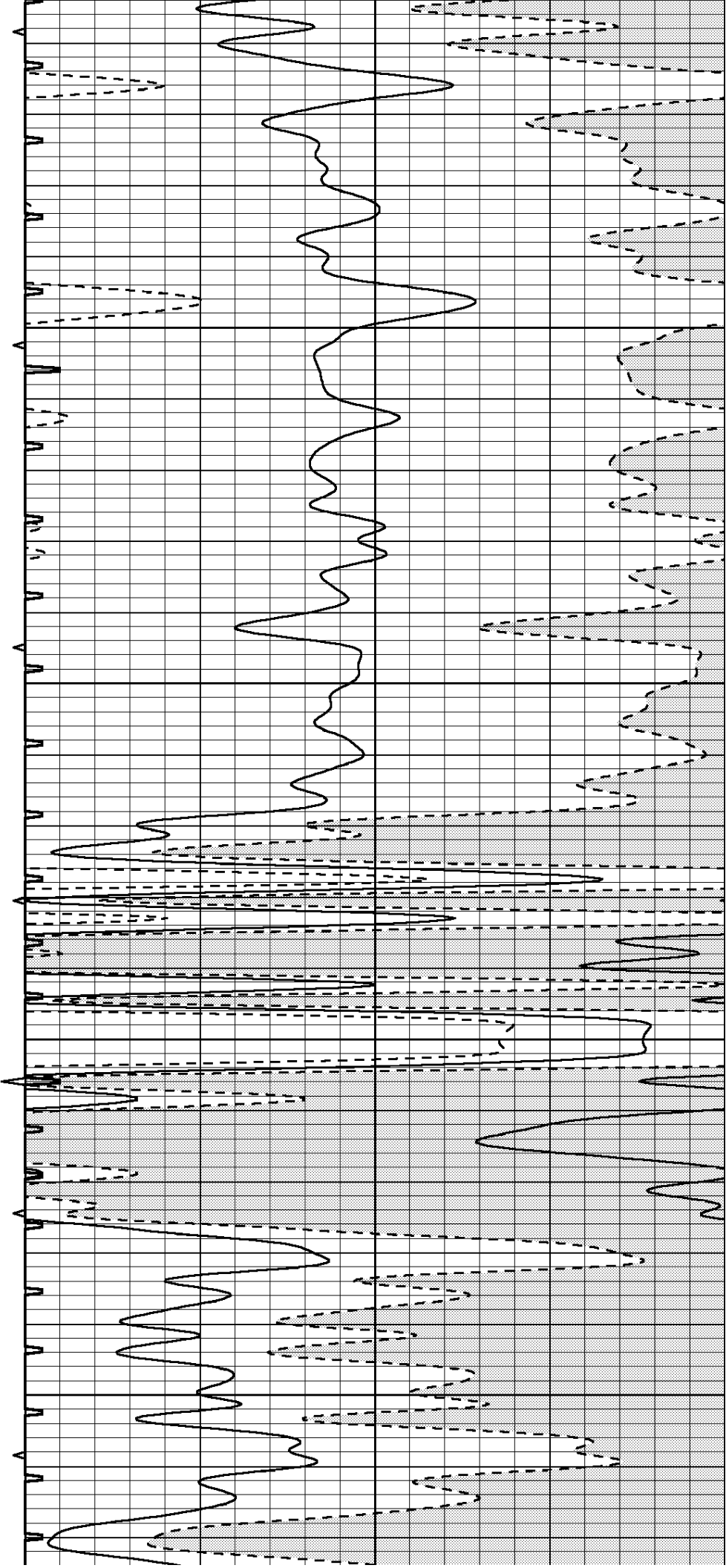


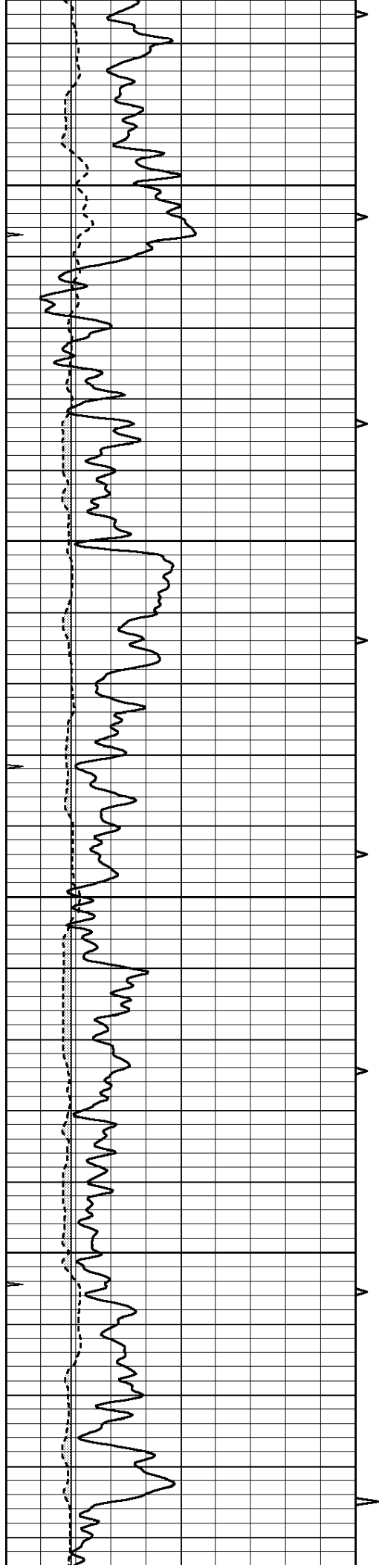
1300

1350

1400

1450



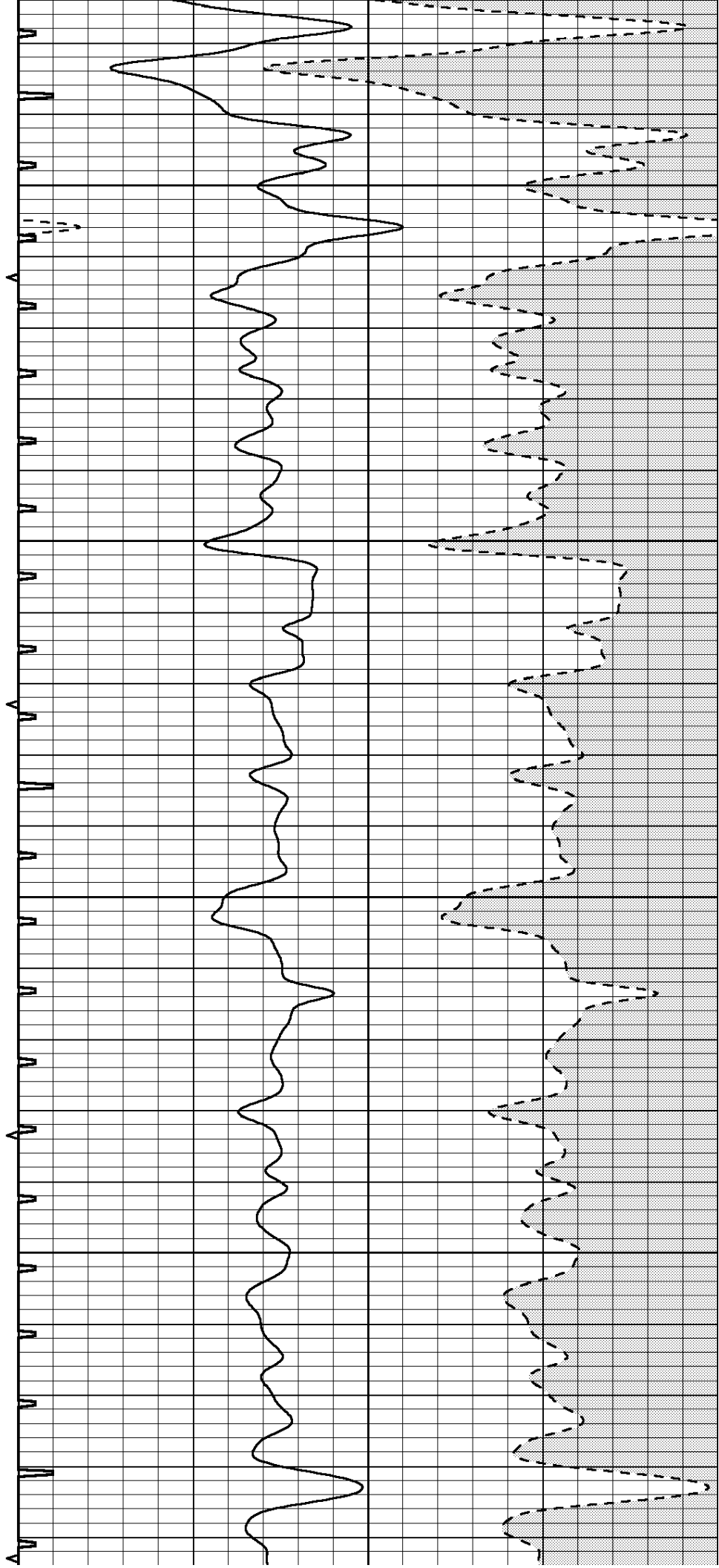


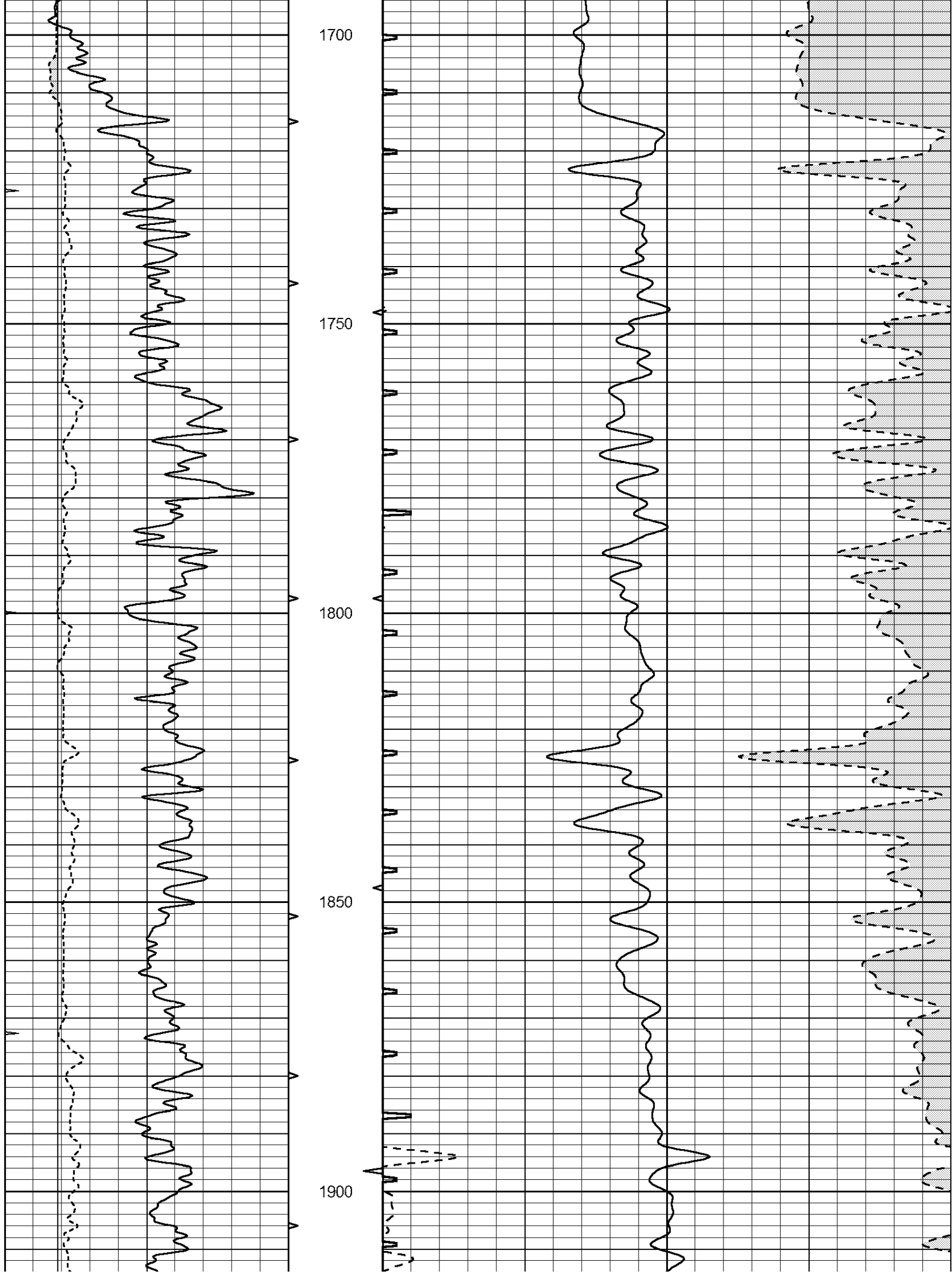
1500

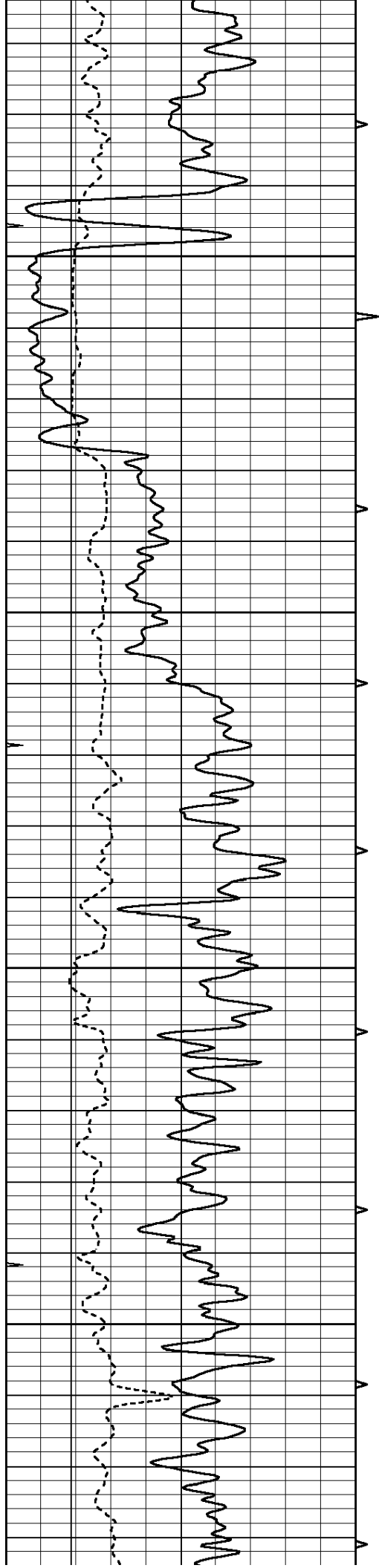
1550

1600

1650





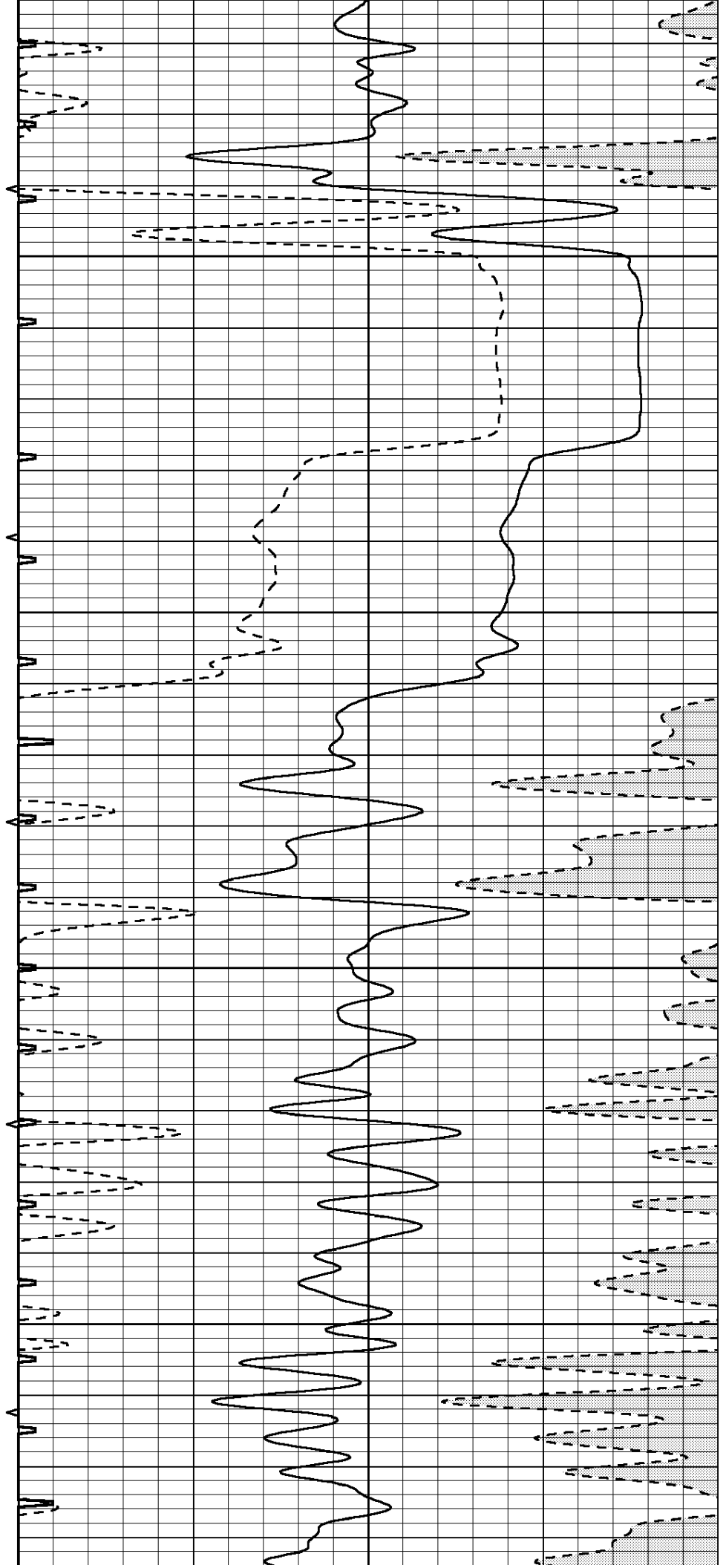


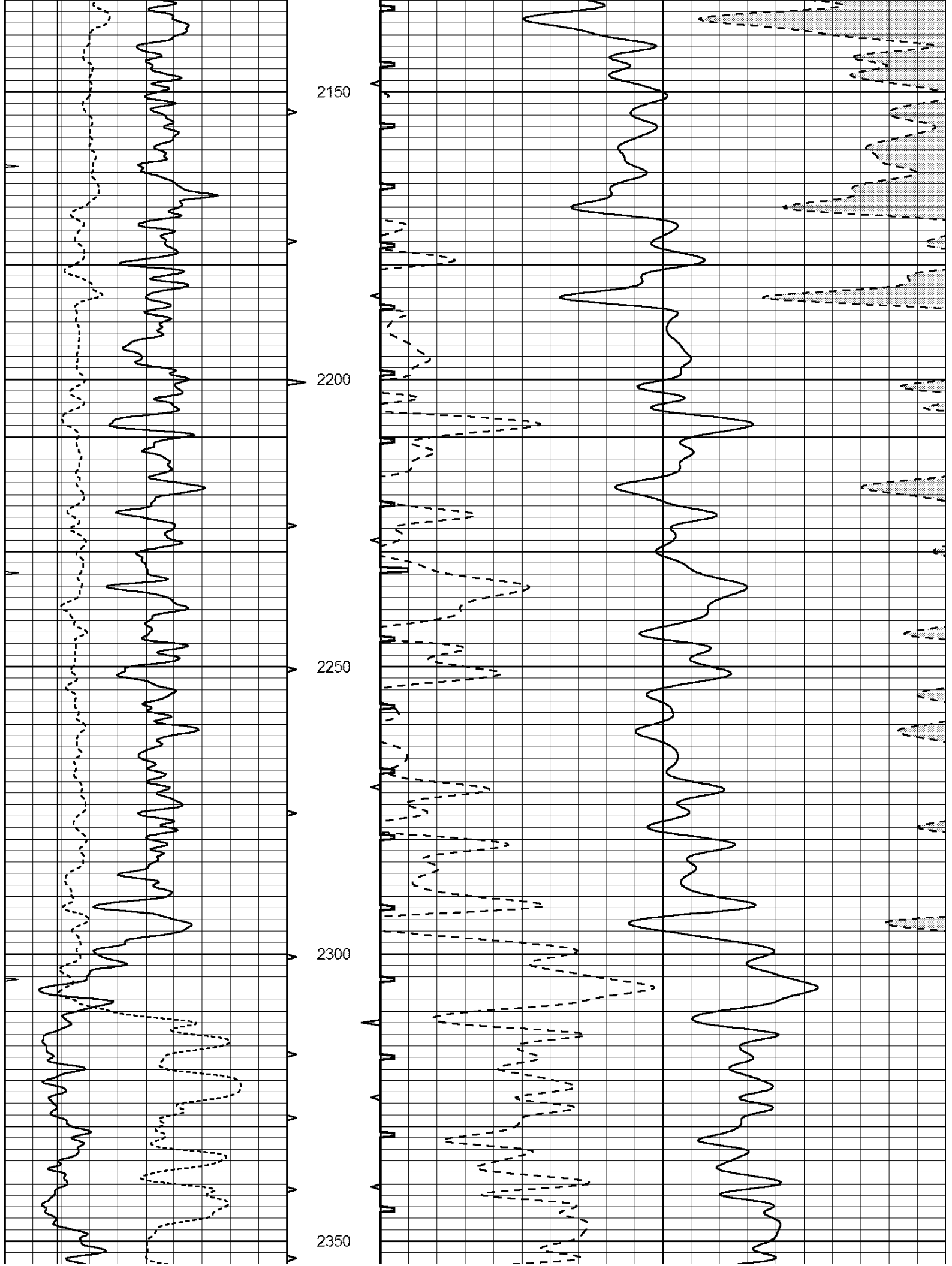
1950

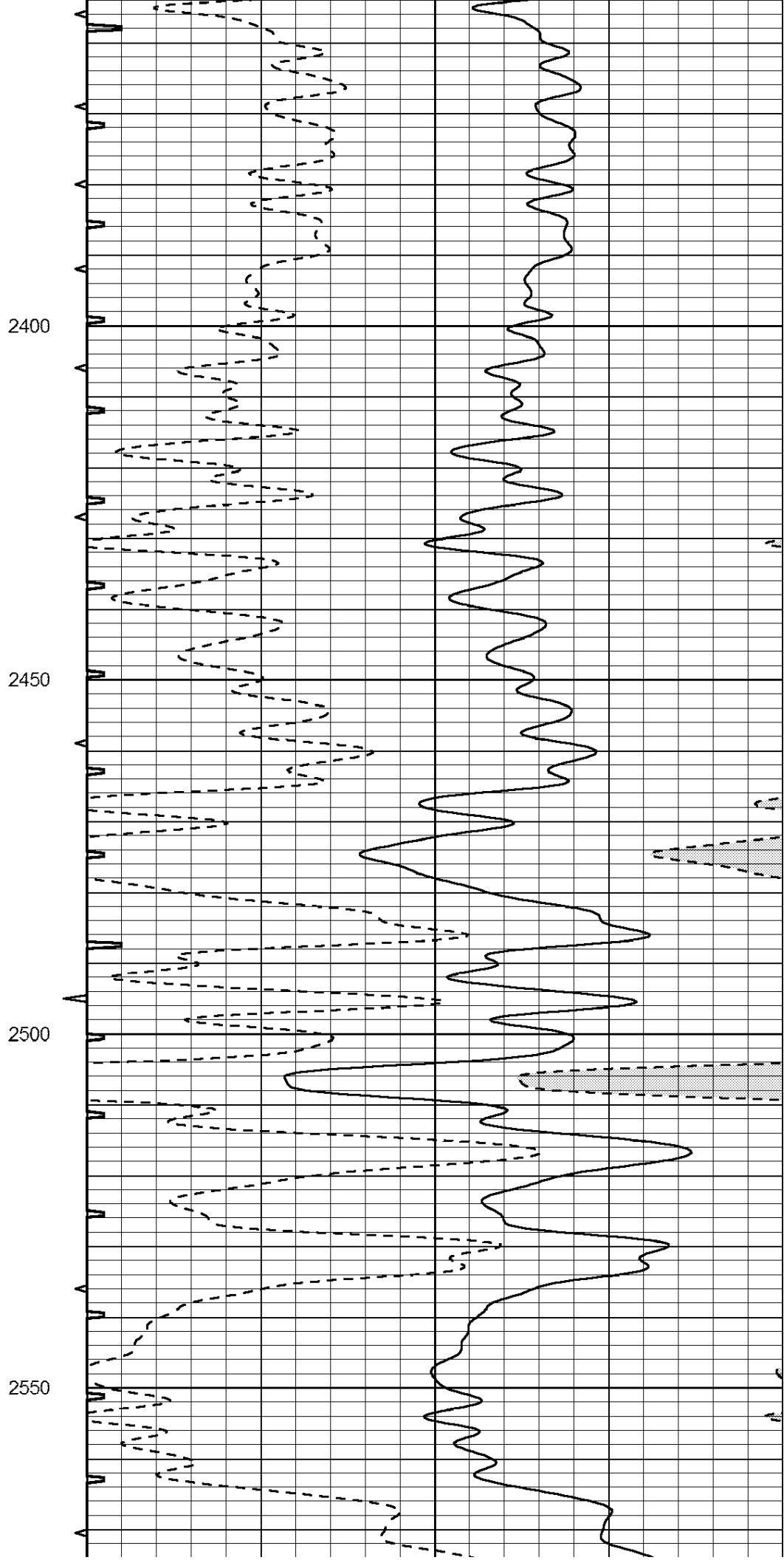
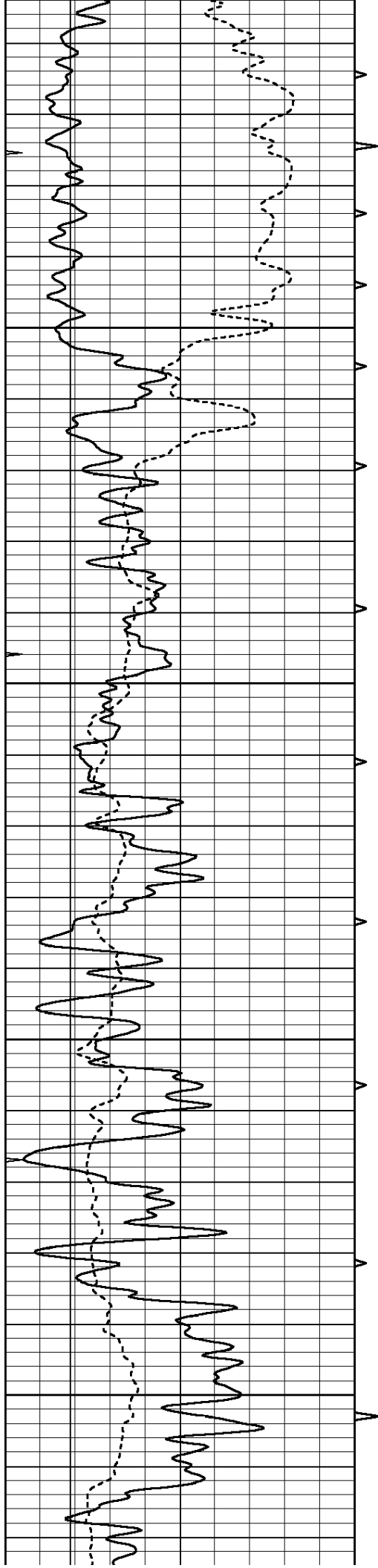
2000

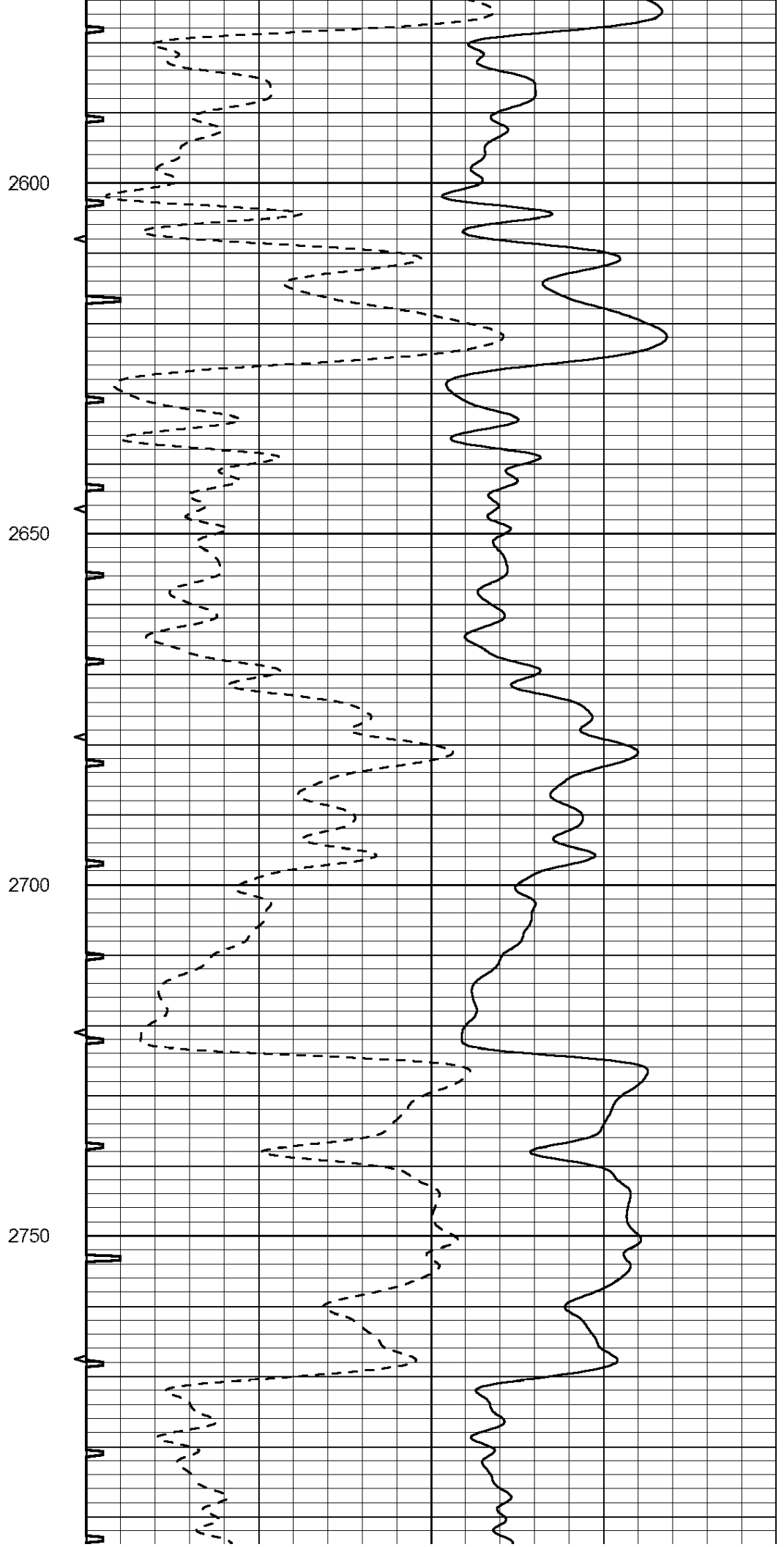
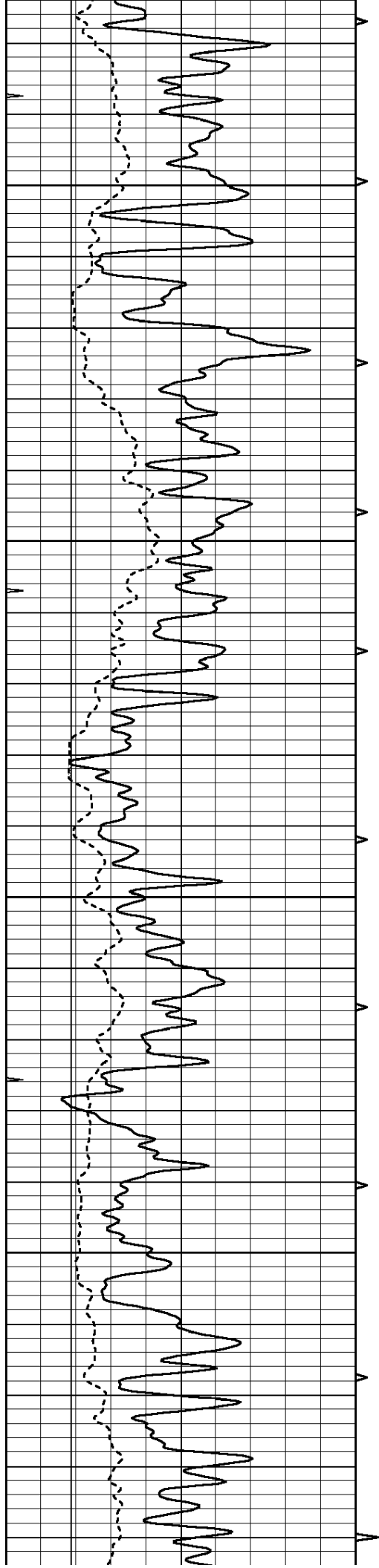
2050

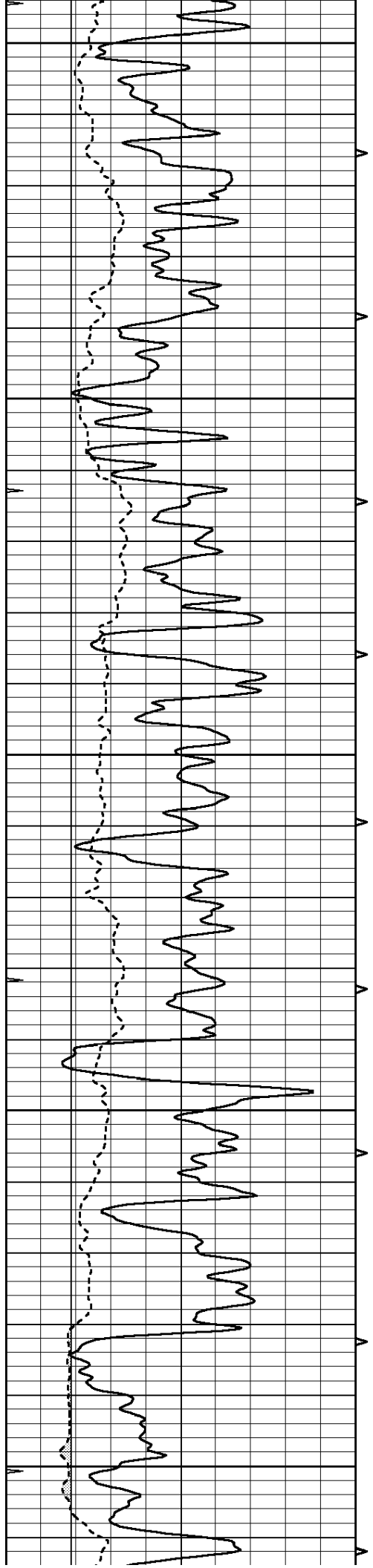
2100



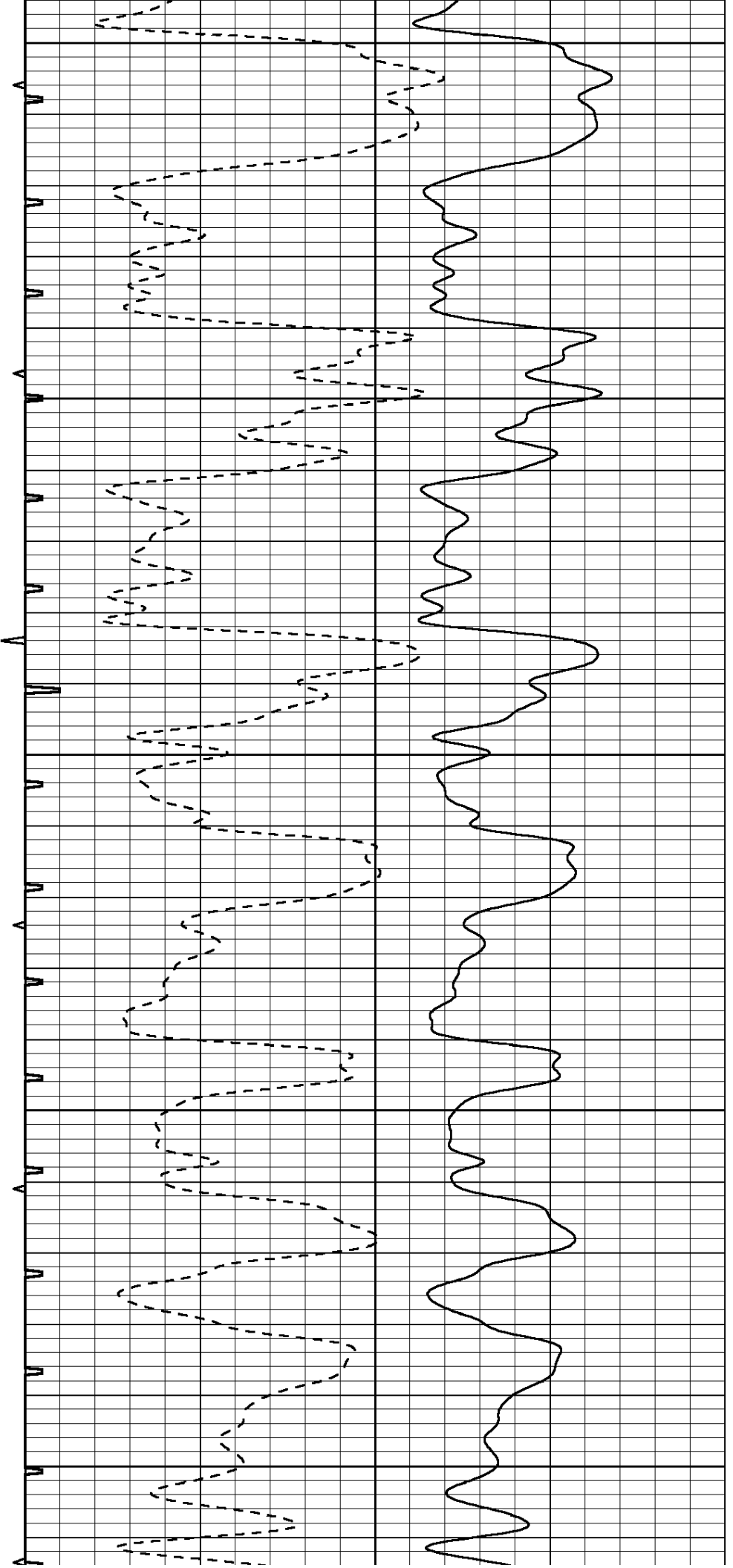


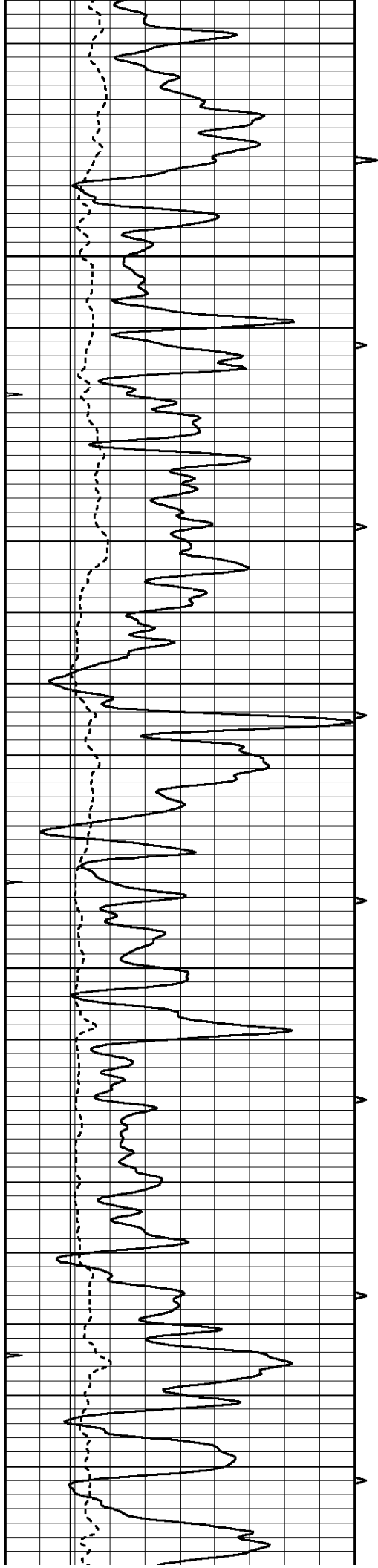






3000
2950
2900
2850
2800



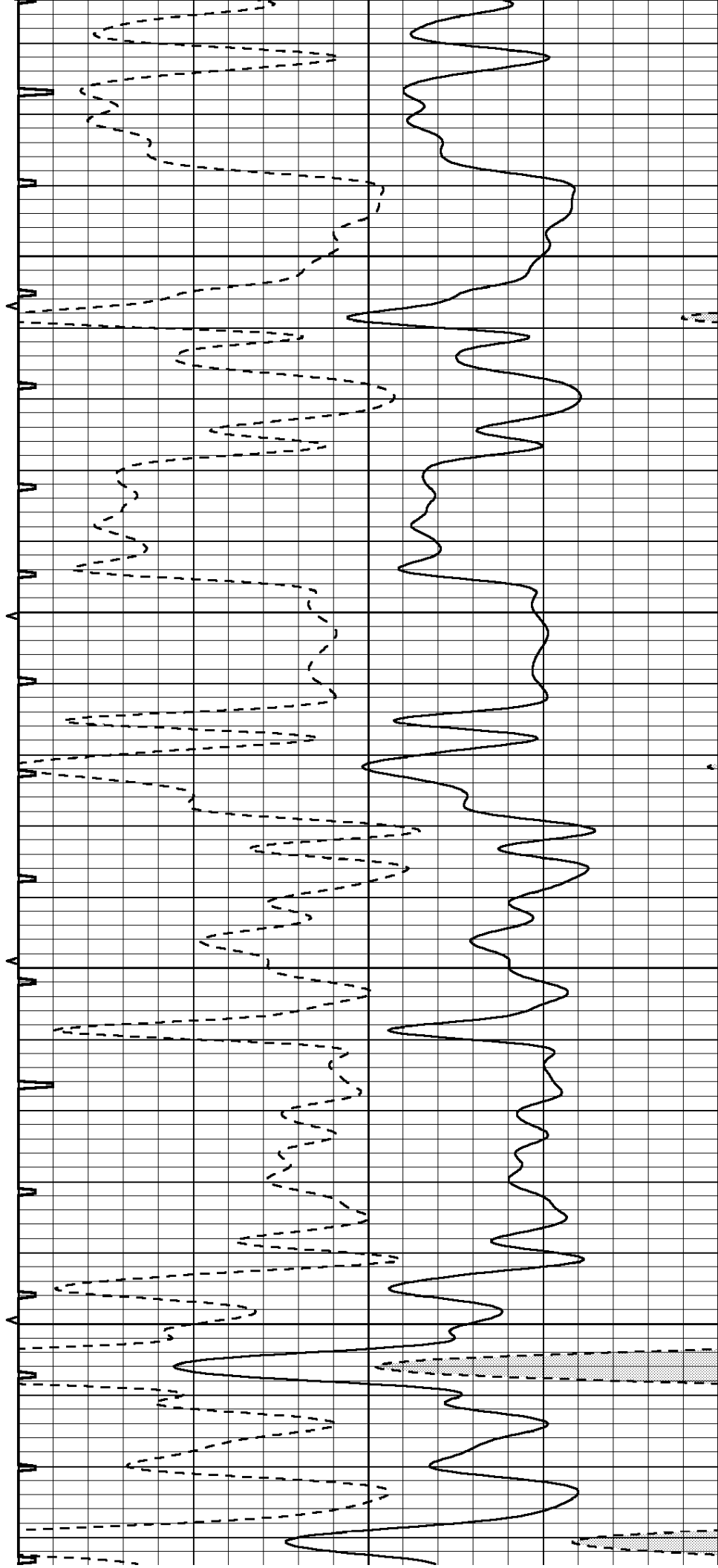


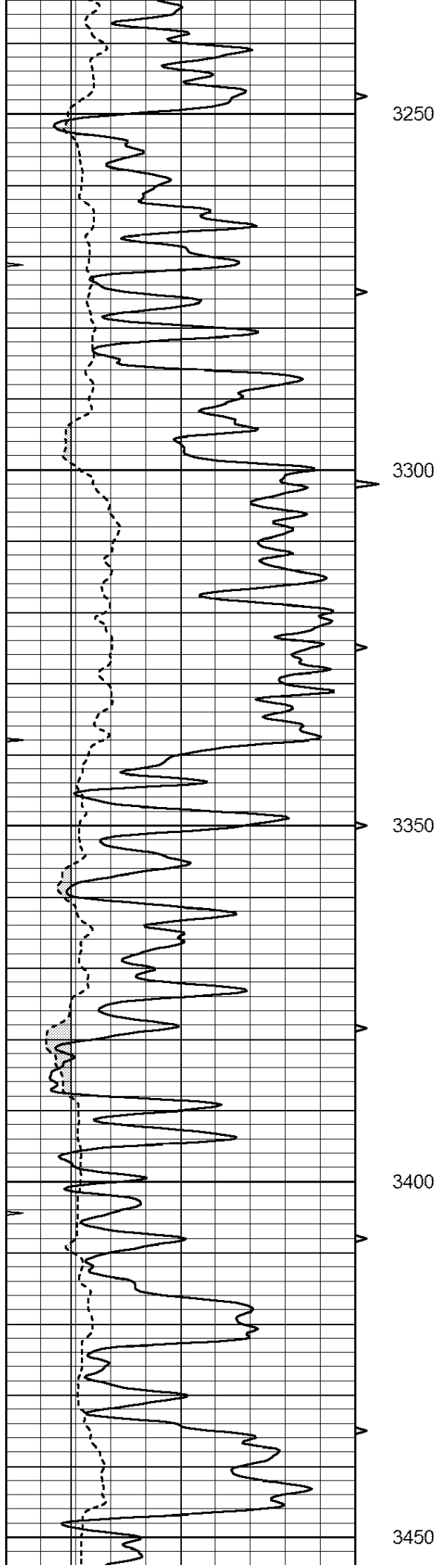
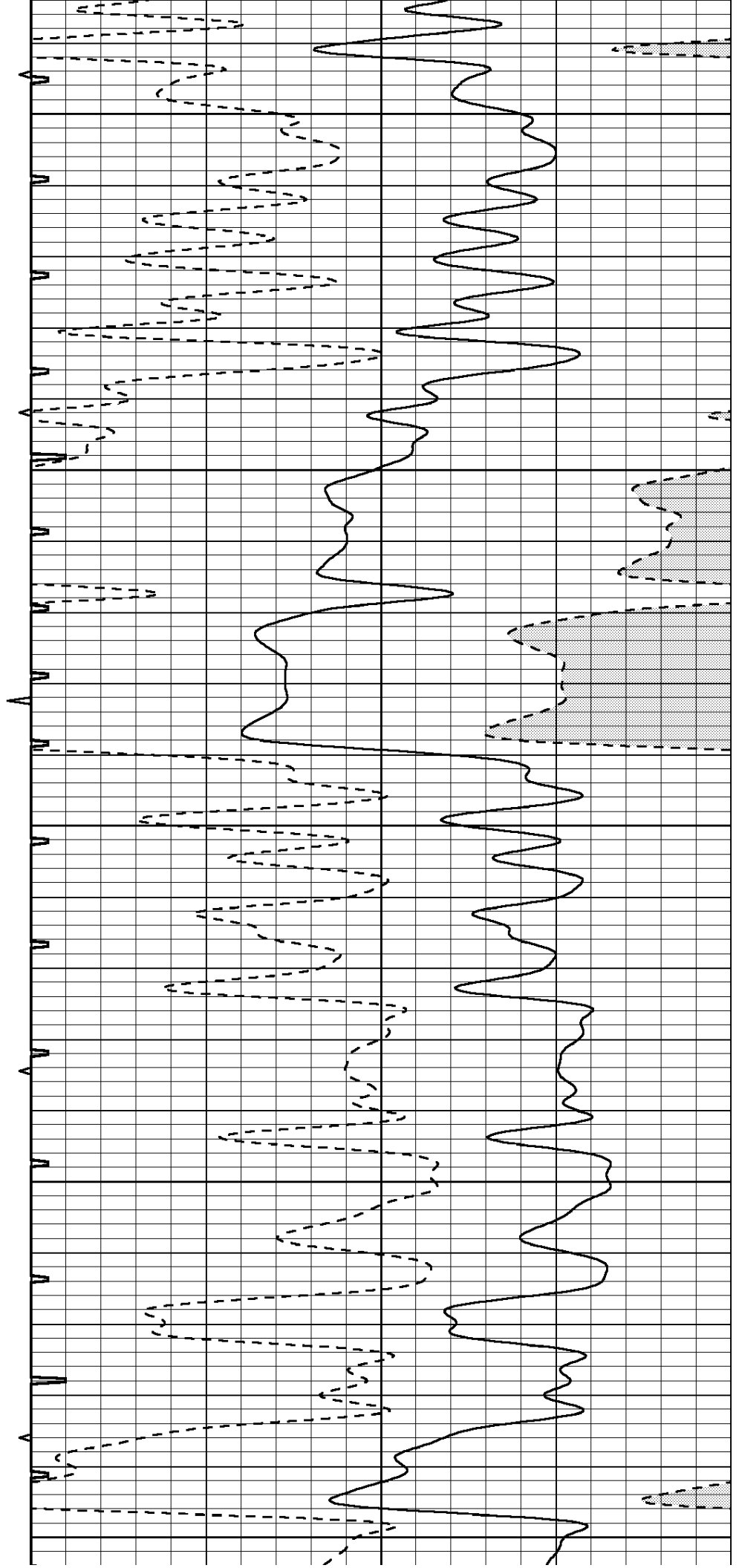
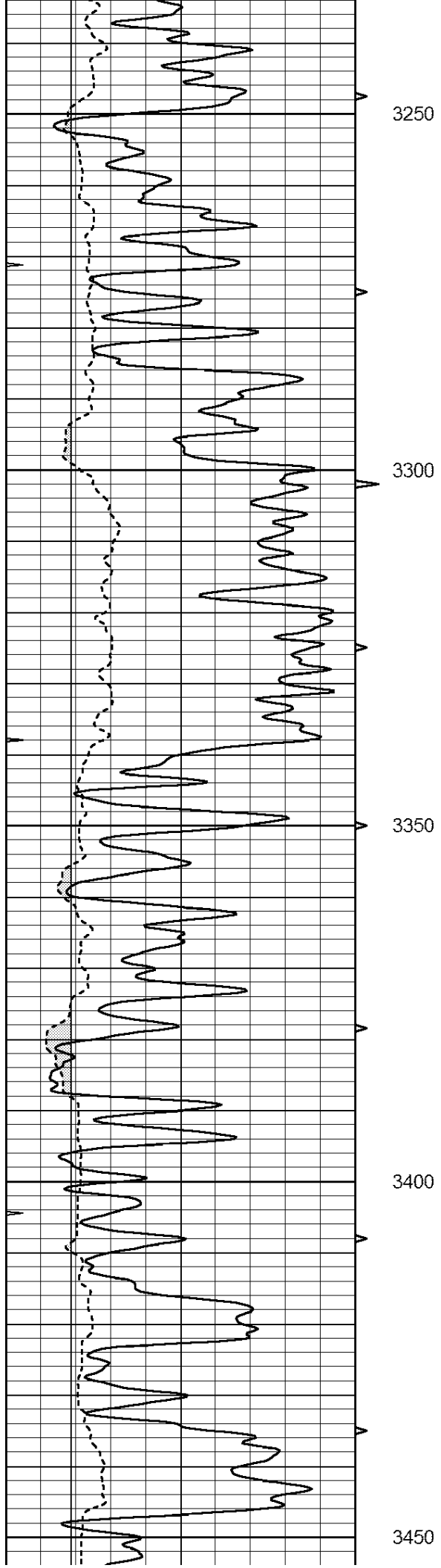
3050

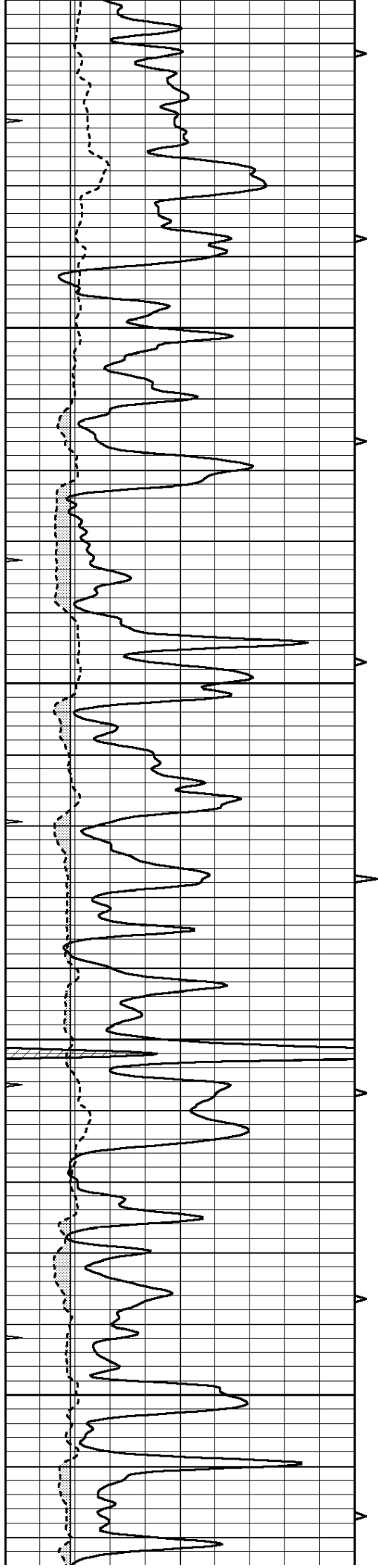
3100

3150

3200





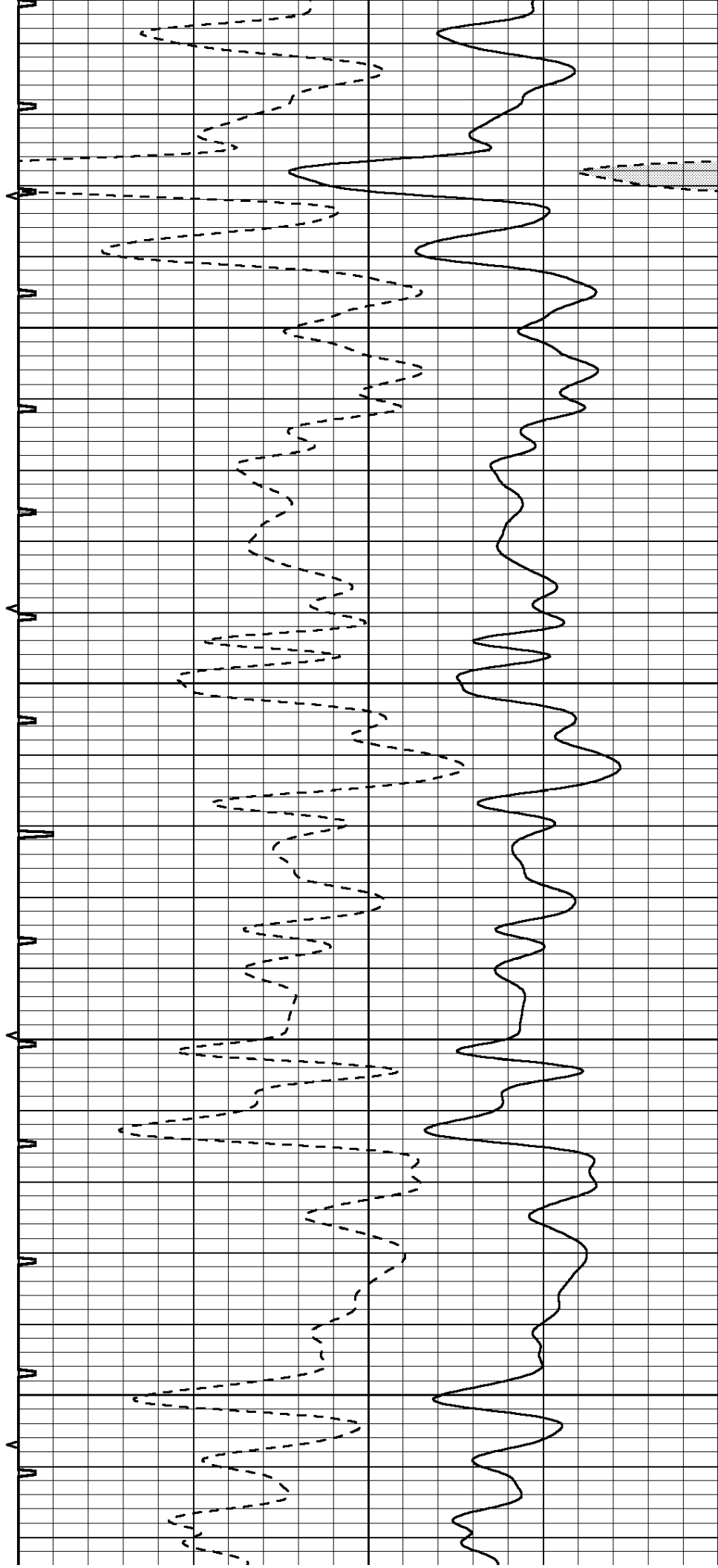


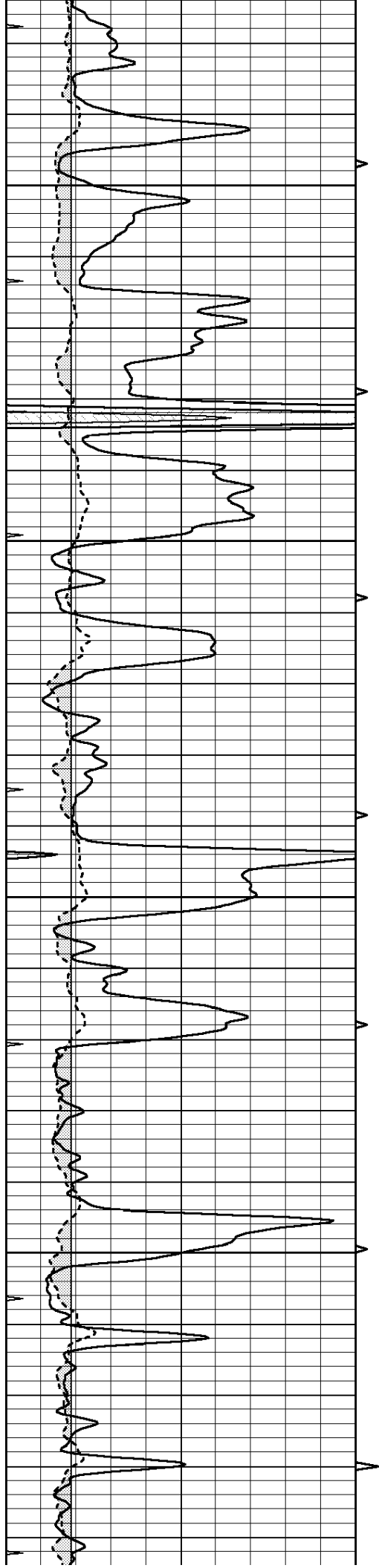
3500

3550

3600

3650



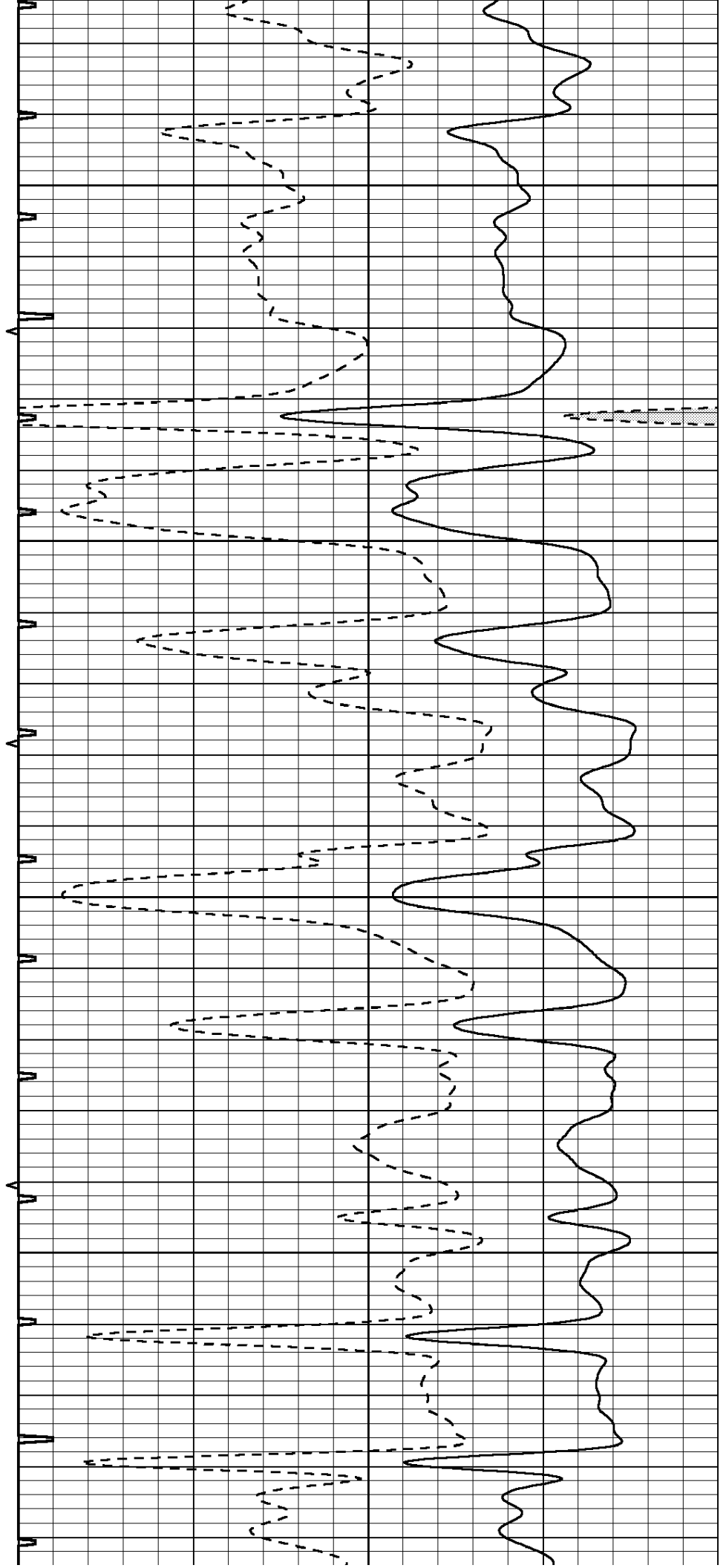


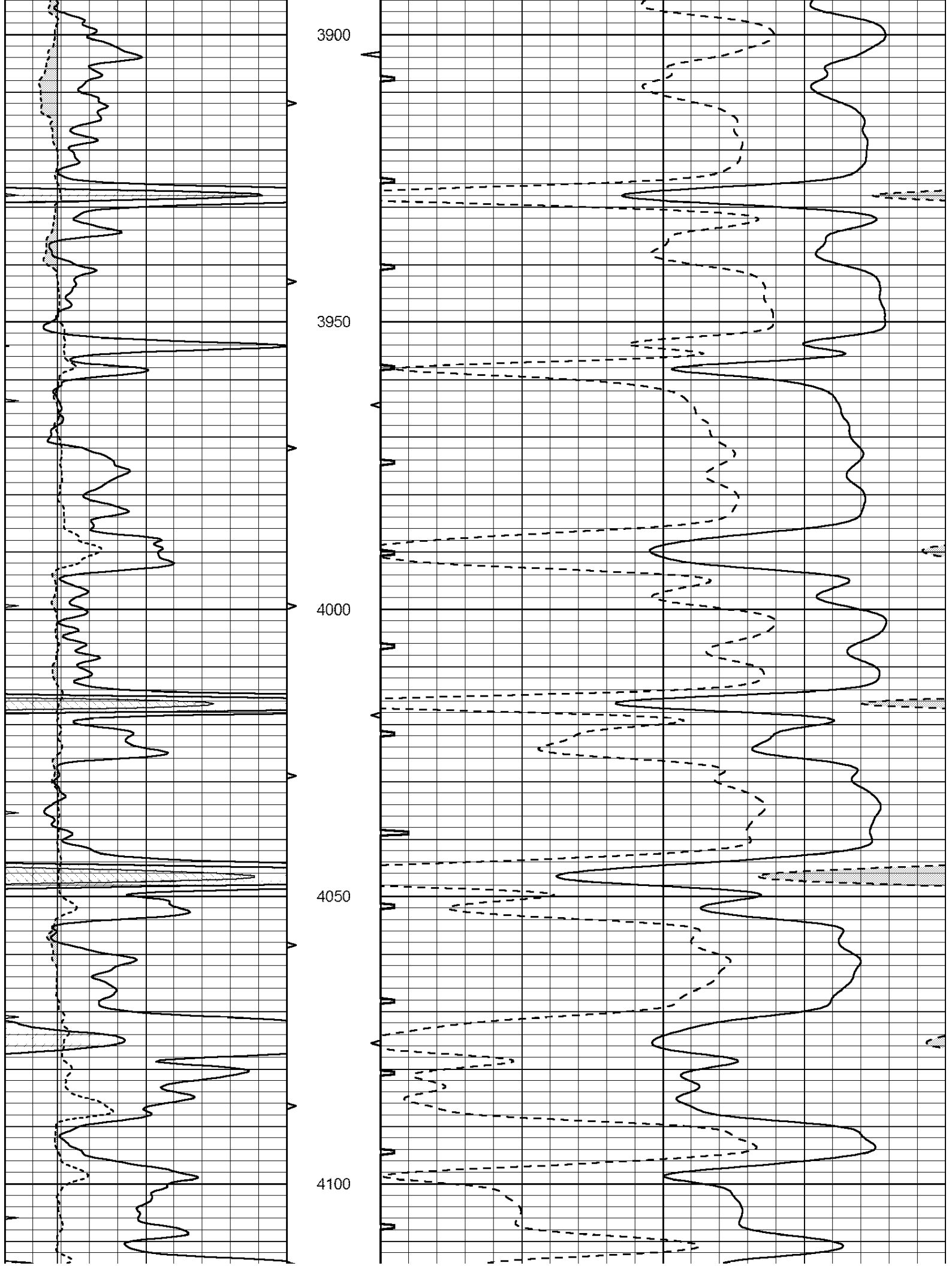
3700

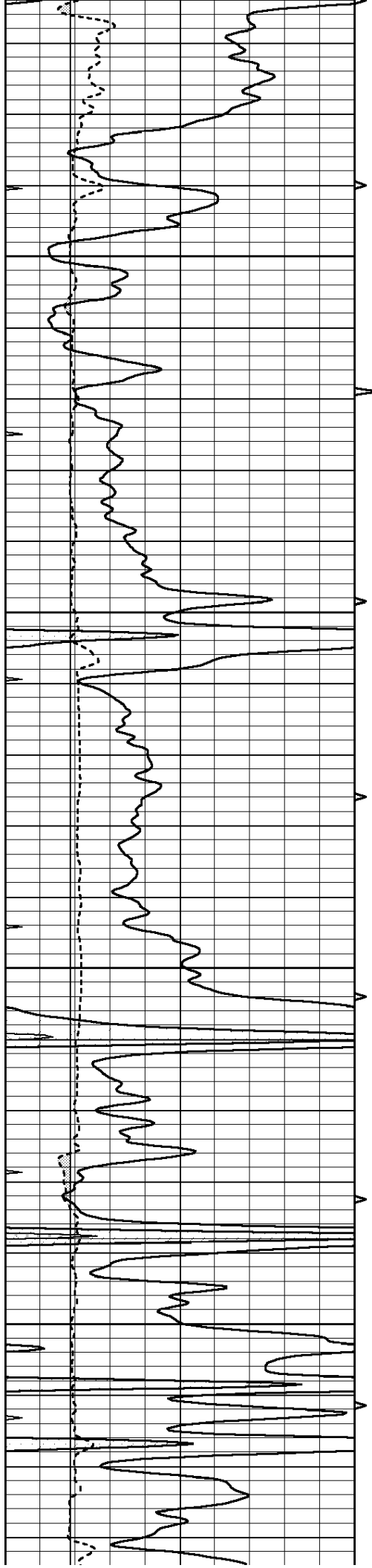
3750

3800

3850





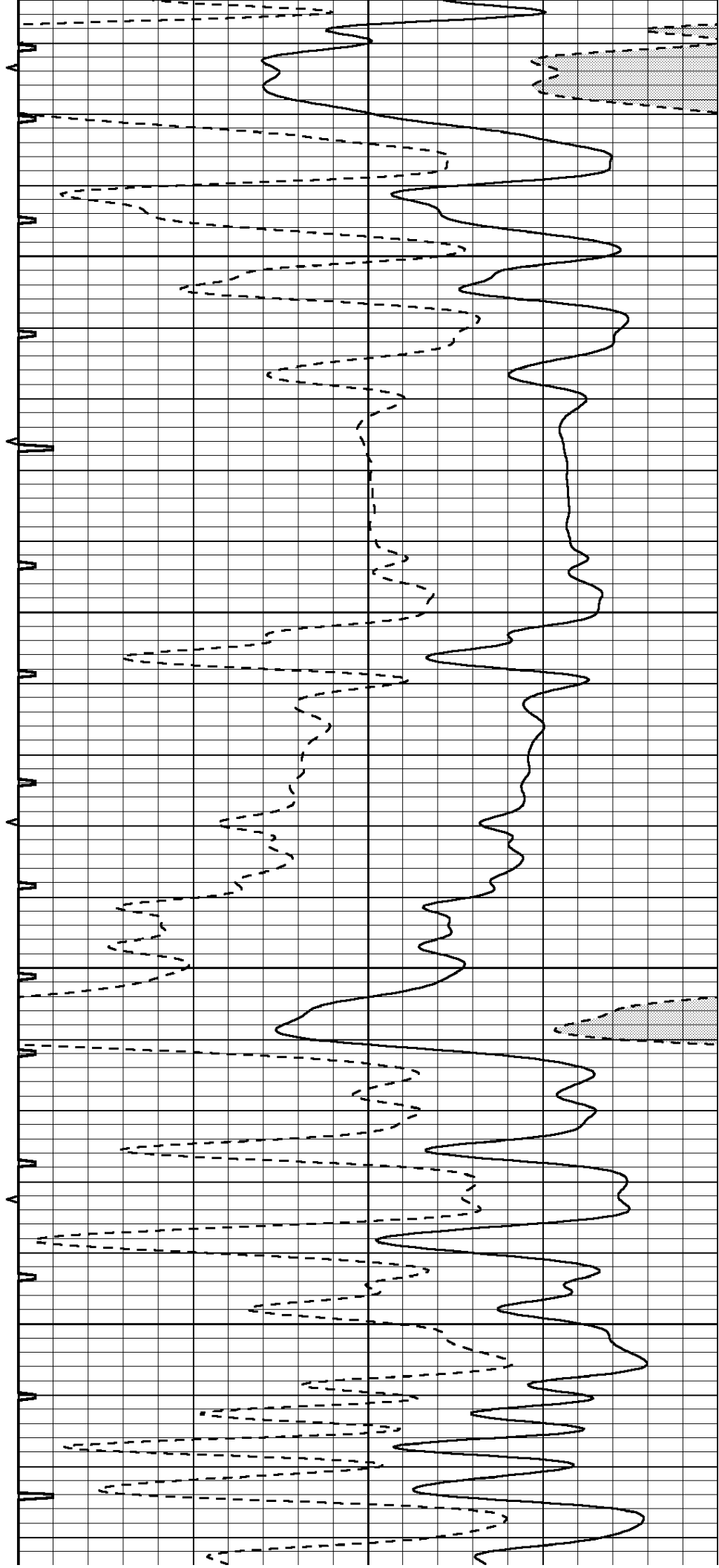


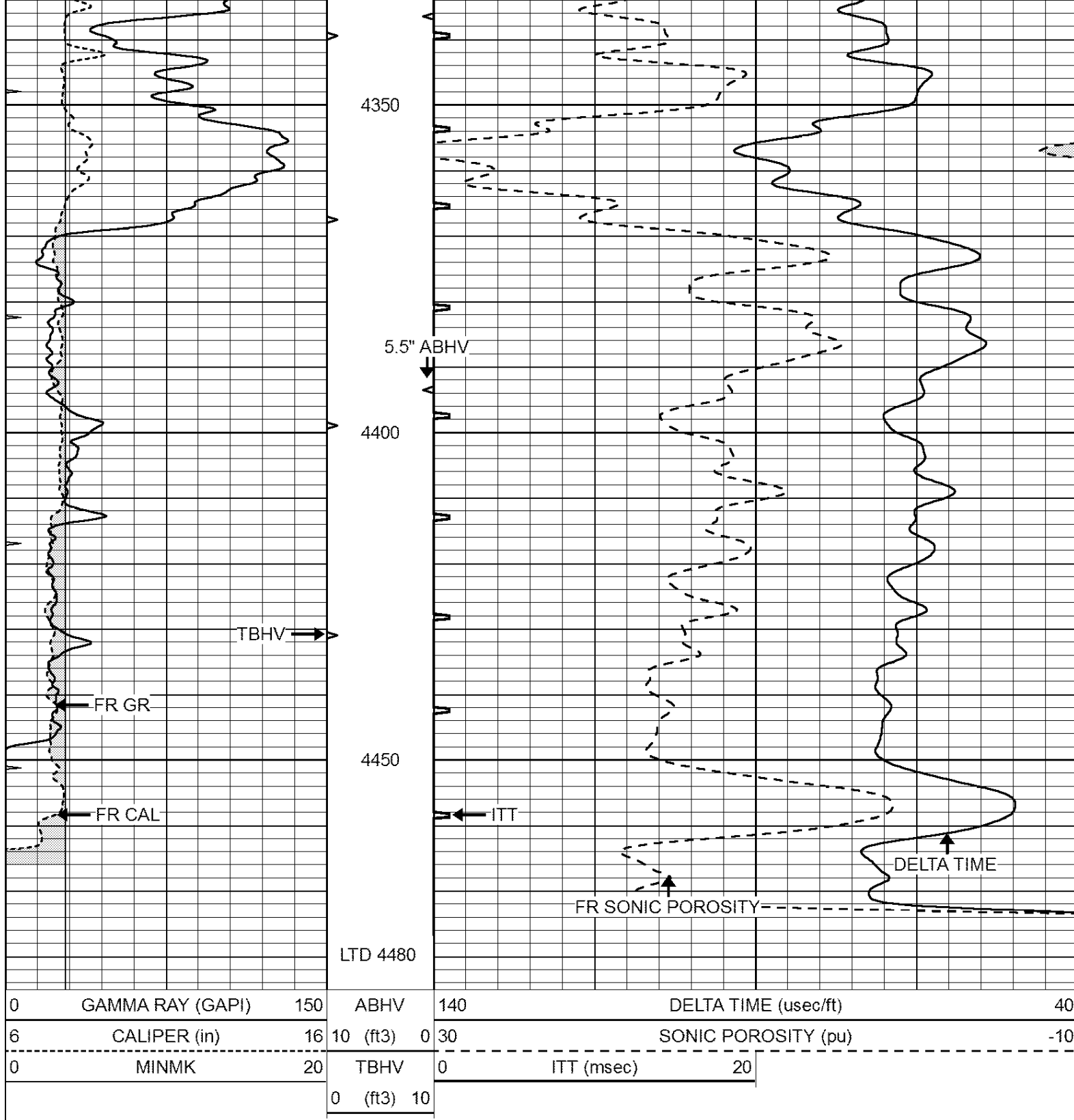
4150

4200

4250

4300

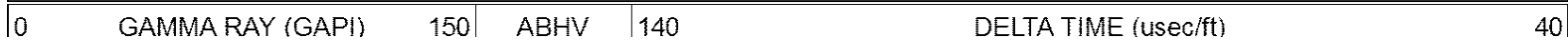




SUPERIOR
Hays,
Kansas

REPEAT SECTION

Database File: 409130pe.db
 Dataset Pathname: pass5.6
 Presentation Format: slt
 Dataset Creation: Wed May 30 17:20:10 2012
 Charted by: Depth in Feet scaled 1:240



6	CALIPER (in)	16	10 (ft3)	0	30	SONIC POROSITY (pu)	-10
0	MINMK	20	TBHV	0	ITT (msec)	20	
			0 (ft3)	10			

