



SUPERIOR
Hays,
Kansas

COMPENSATED
DENSITY / NEUTRON
PE LOG

Company MULL DRILLING COMPANY, INC.
Well #1-26 ALBIN "A"
Field WHITNEY WEST
County GOVE
State KANSAS

Company MULL DRILLING COMPANY, INC.
Well #1-26 ALBIN "A"
Field WHITNEY WEST
County GOVE State KANSAS

Location: API # : 15-063-21998-0000
510' FNL & 2250' FWL

Permanent Datum GROUND LEVEL Elevation 2486
Log Measured From KELLY BUSHING 5' A.G.L.
Drilling Measured From KELLY BUSHING

Other Services
DIL/MEL
SONIC

Elevation
K.B. 2491
D.F. 2489
G.L. 2486

Date	5/30/12		
Run Number	ONE		
Depth Driller	4480		
Depth Logger	4480		
Bottom Logged Interval	4456		
Top Log Interval	3500		
Casing Driller	8 5/8"@215'		
Casing Logger	220		
Bit Size	7 7/8"		
Type Fluid in Hole	CHEMICAL MUD	CHLORIDES 3,500 PPM	
Density / Viscosity	9.4/56		
pH / Fluid Loss	9.0/9.2		
Source of Sample	FLOWLINE		
Rm @ Meas. Temp	.800@92F		
Rmt @ Meas. Temp	.600@92F		
Rmc @ Meas. Temp	.960@92F		
Source of Rmf / Rmc	MEASUREMENT		
Rm @ BHT	.613@120F		
Time Circulation Stopped	2 HOURS		
Time Logger on Bottom	2:45 P.M.		
Maximum Recorded Temperature	120F		
Equipment Number	4010		
Location	HAYS, KANSAS		
Recorded By	JEFF LUEBBERS		
Witnessed By	KEVIN KESSLER		

<<< Fold Here >>>

All interpretations are opinions based on inferences from electrical or other measurements and we cannot and do not guarantee the accuracy or correctness of any interpretation, and we shall not, except in the case of gross or willful negligence on our part, be liable or responsible for any loss, costs, damages, or expenses incurred or sustained by anyone resulting from any interpretation made by any of our officers, agents or employees. These interpretations are also subject to our general terms and conditions set out in our current Price Schedule.

Comments

THANK YOU FOR USING SUPERIOR WELL SERVICE HAYS, KANSAS (785) 628-6395
DIRECTIONS
PENDENNIS, KS. & HWY 4, 6 1/2N. ON "RED CHIEF RD." TO "RD. C", 1E. TO CURVE. CONTINUE 3/4
MORE E. ON RIGHT FORK

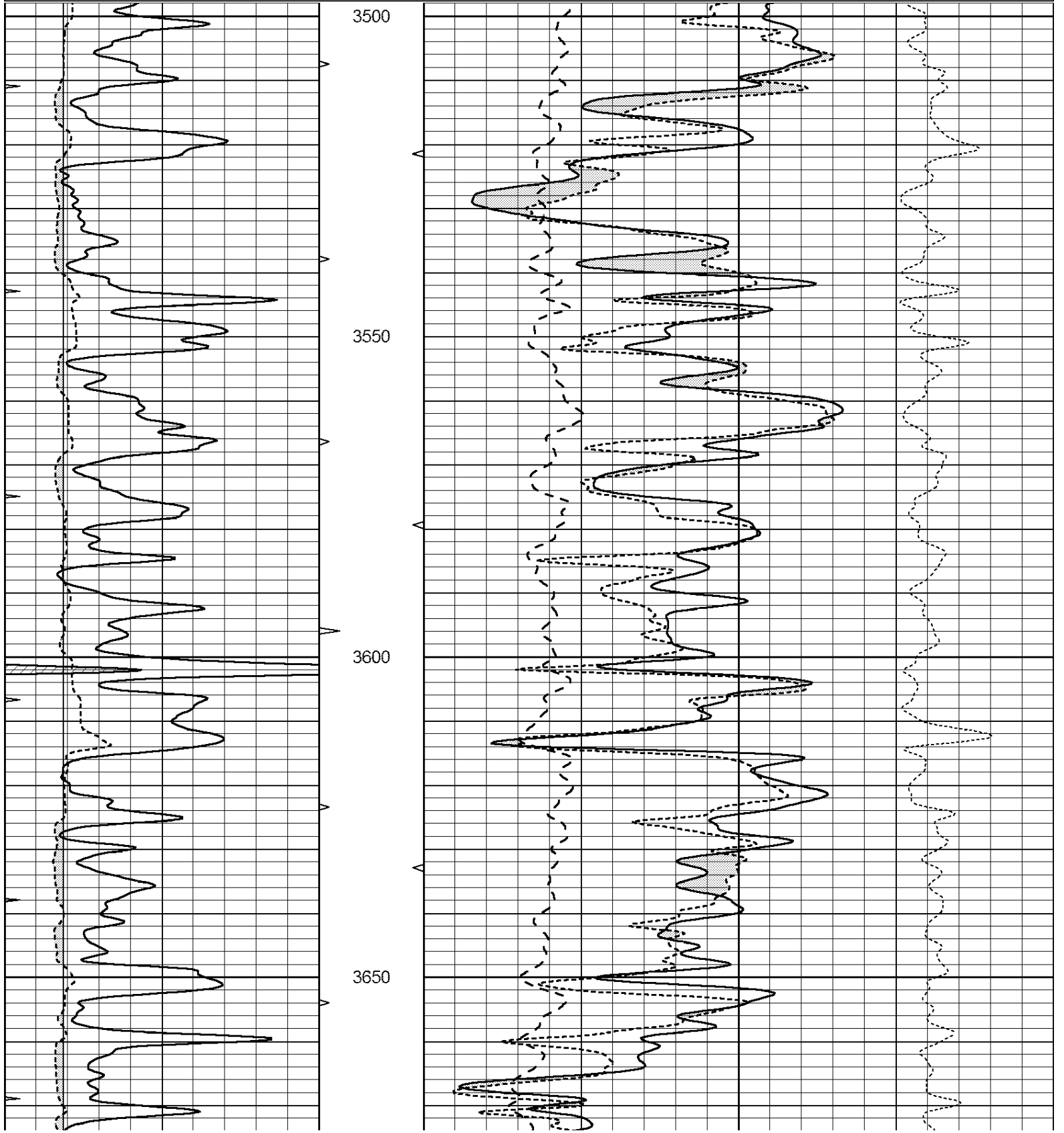


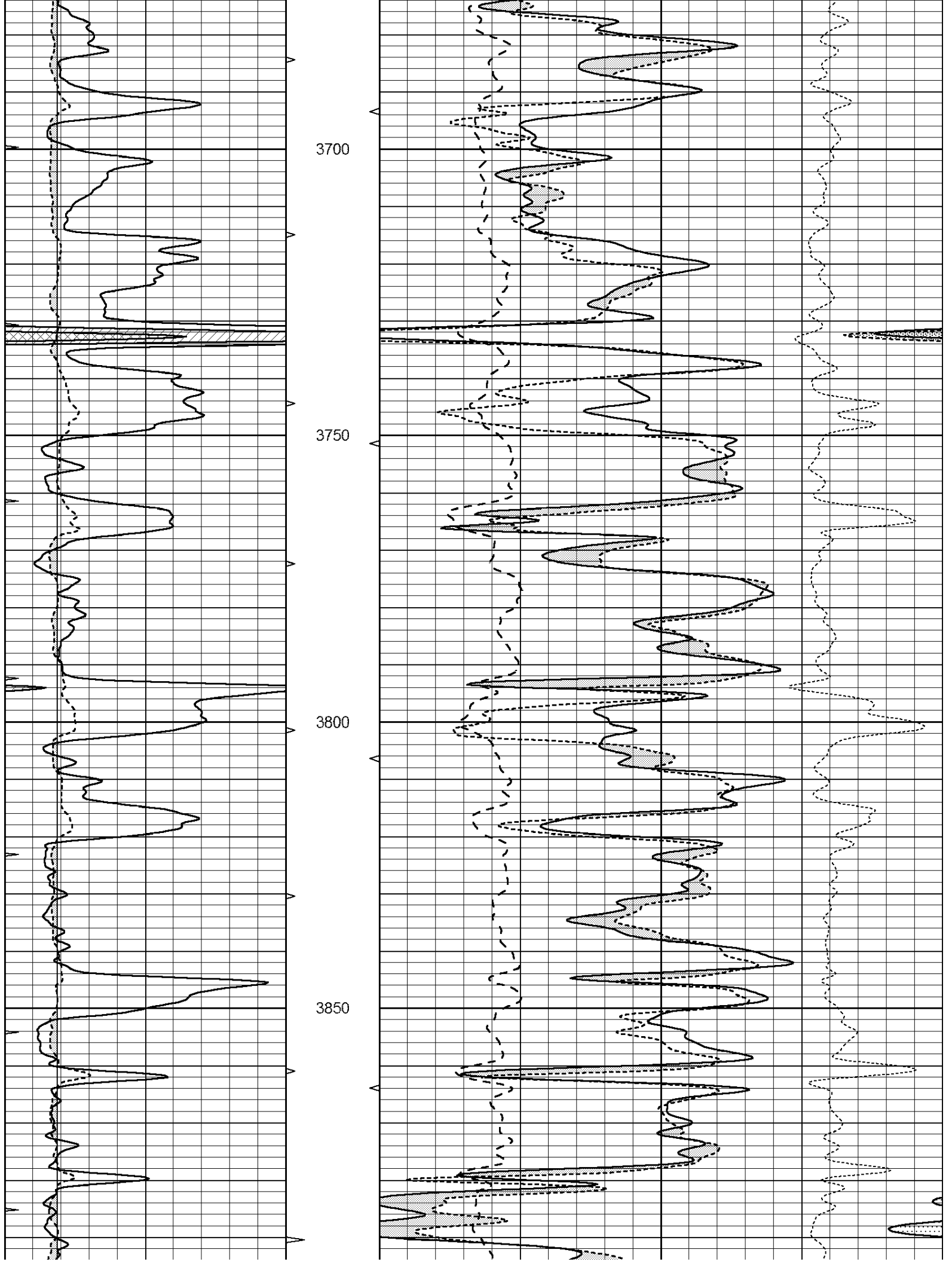
SUPERIOR
Hays,
Kansas

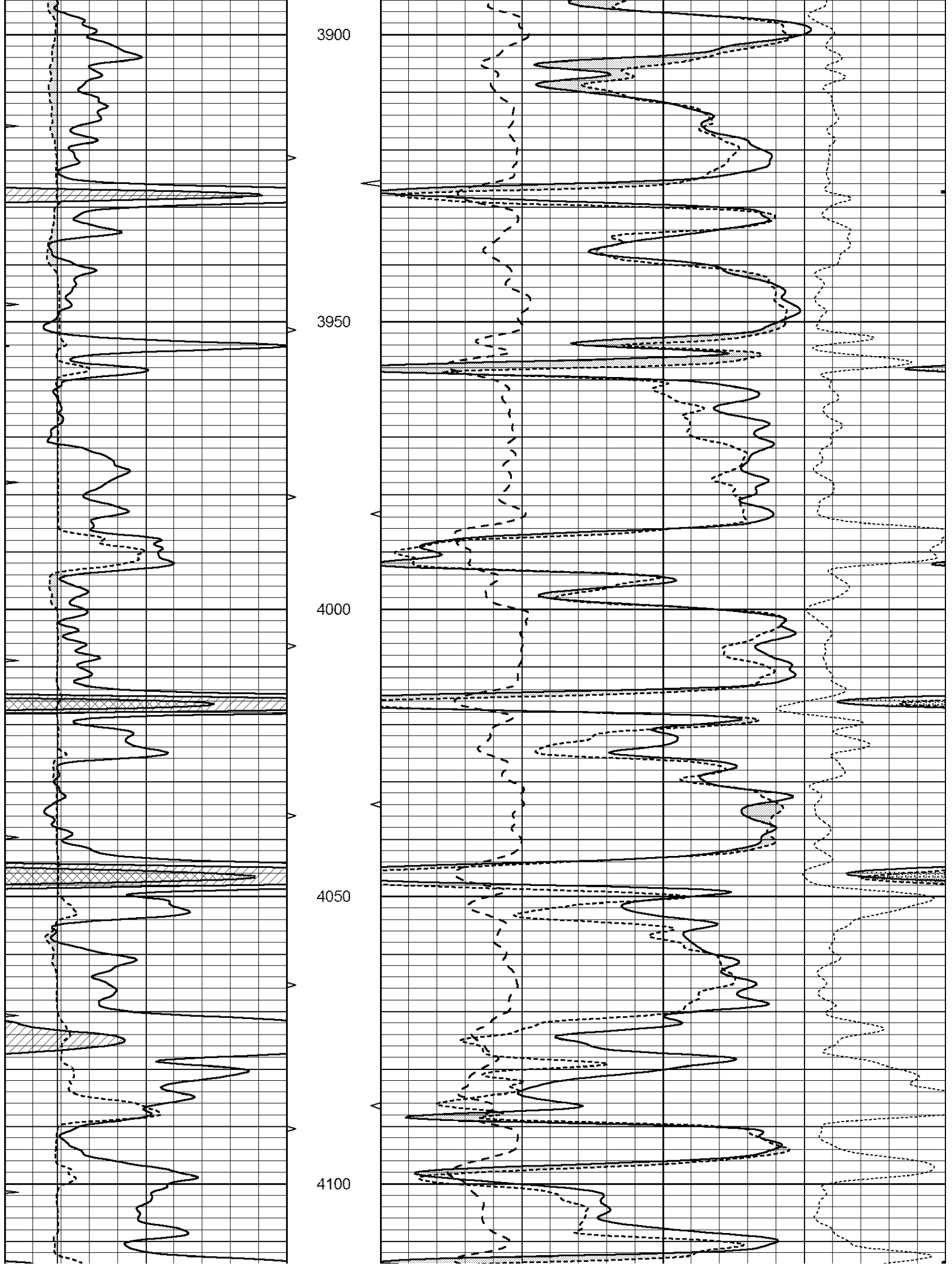
MAIN SECTION

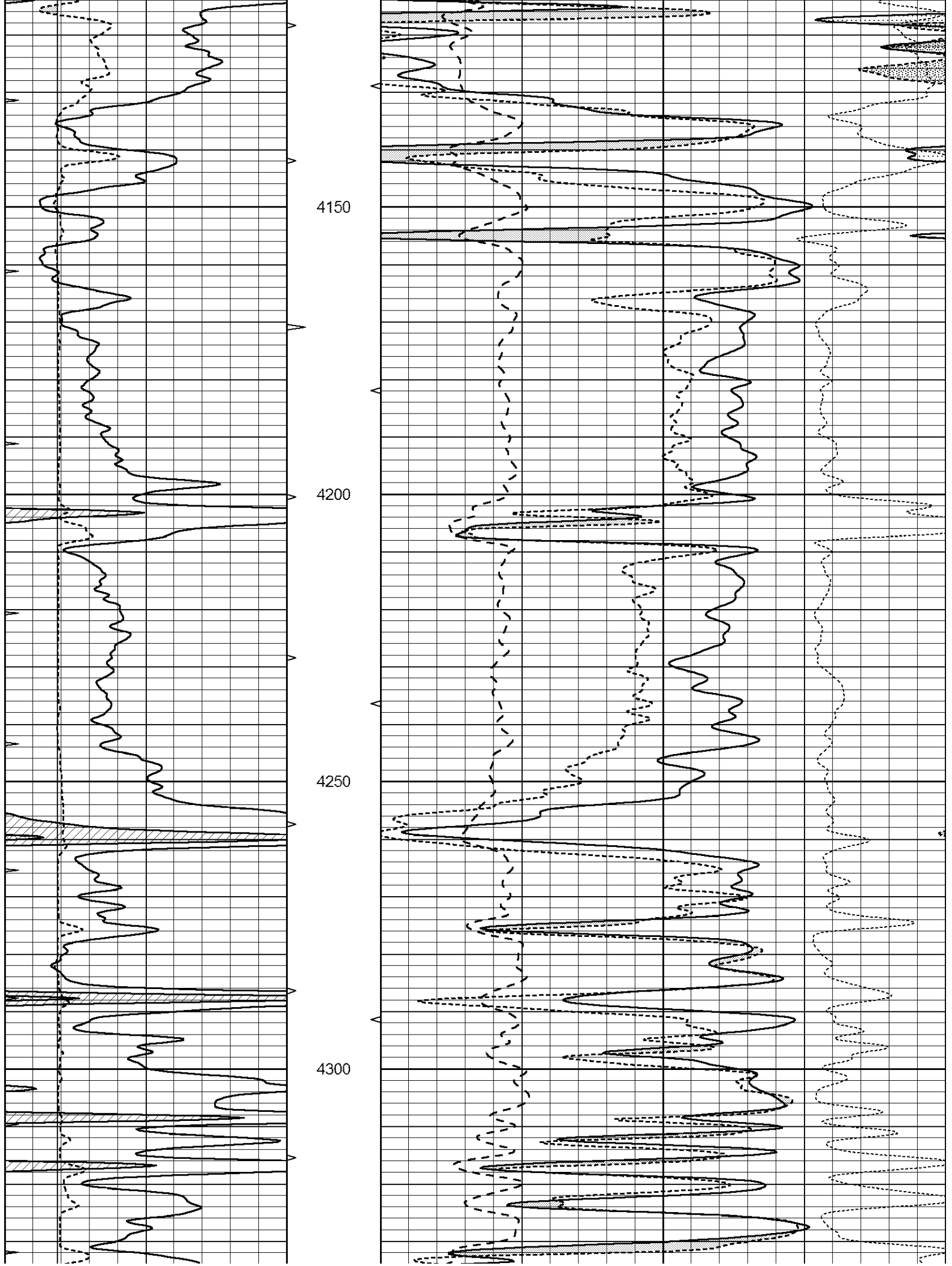
Database File: 409130pe.db
 Dataset Pathname: pass3.3
 Presentation Format: ldt_neu
 Dataset Creation: Wed May 30 16:10:31 2012 by Calc Open-Cased 110302
 Charted by: Depth in Feet scaled 1:240

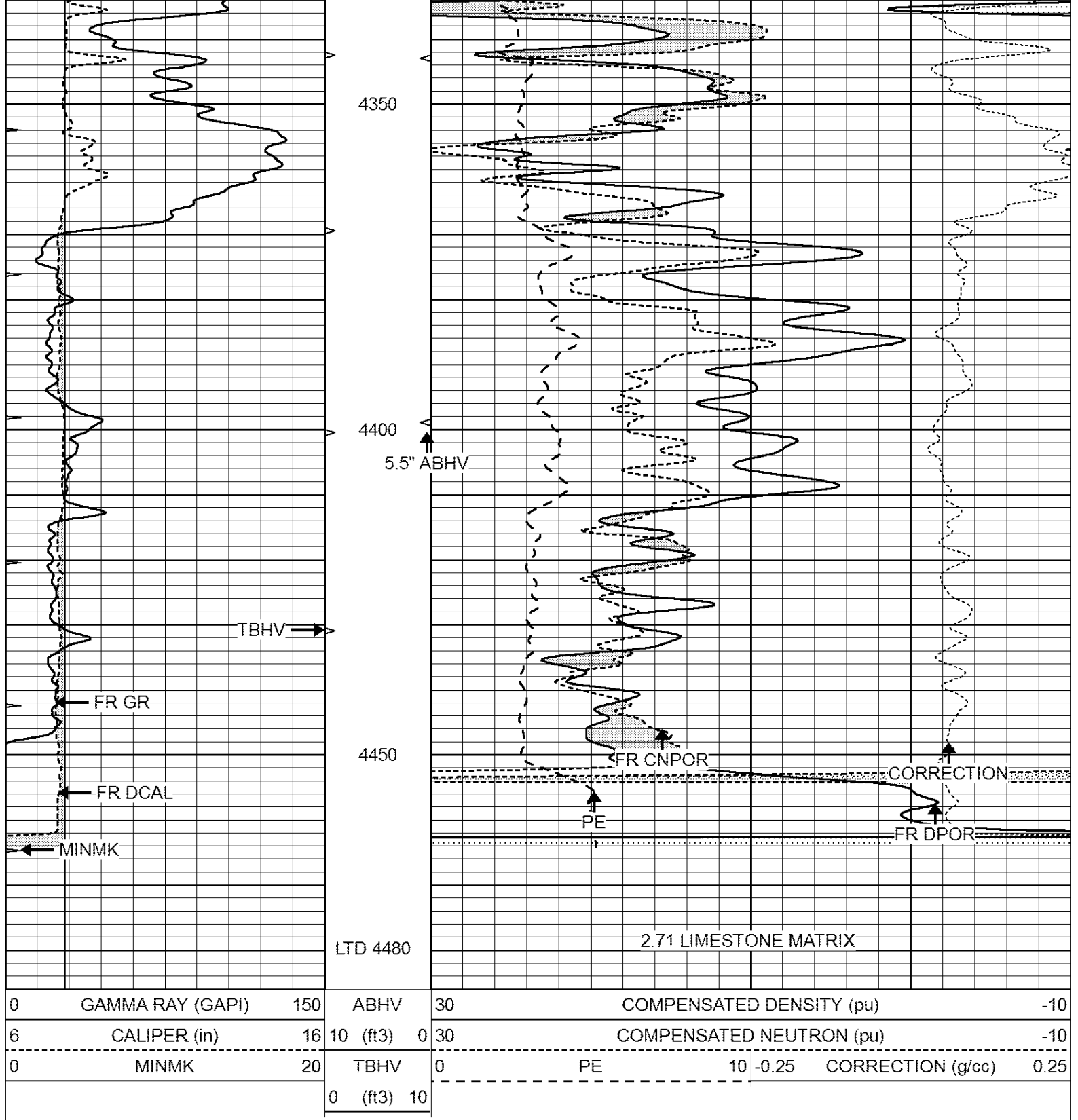
0	GAMMA RAY (GAPI)	150	ABHV	30	COMPENSATED DENSITY (pu)	-10
6	CALIPER (in)	16	10 (ft3)	0	COMPENSATED NEUTRON (pu)	-10
0	MINMK	20	TBHV	0	PE	10 -0.25 CORRECTION (g/cc) 0.25
			0 (ft3)	10		











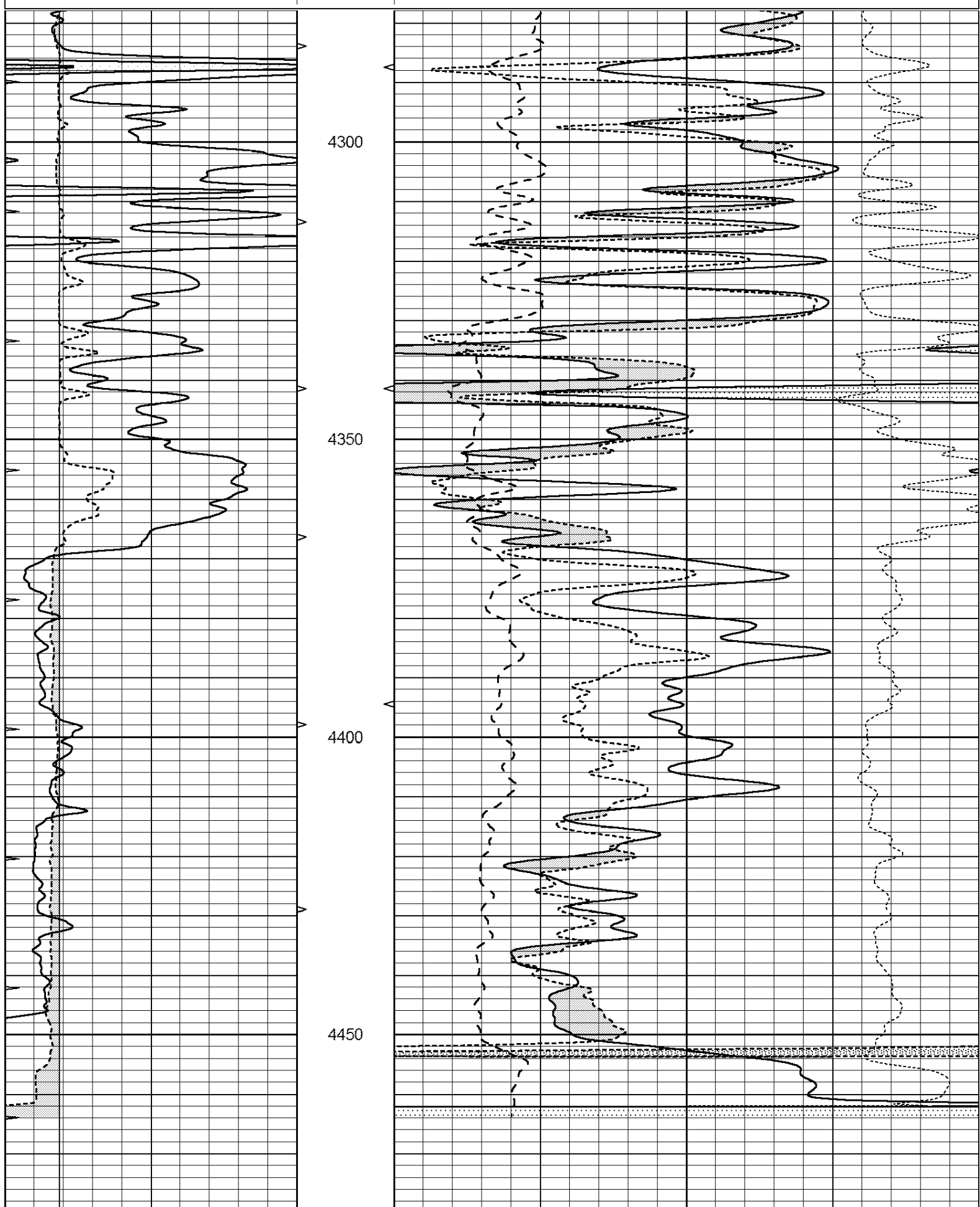
SUPERIOR
Hays,
Kansas

REPEAT SECTION

Database File: 409130pe.db
 Dataset Pathname: pass2.3
 Presentation Format: ldt_neu
 Dataset Creation: Wed May 30 16:13:19 2012 by Calc Open-Cased 110302
 Charted by: Depth in Feet scaled 1:240

0	GAMMA RAY (GAPI)	150	ABHV	30	COMPENSATED DENSITY (pu)	-10
---	------------------	-----	------	----	--------------------------	-----

6	CALIPER (in)	16	10 (ft3)	0	30	COMPENSATED NEUTRON (pu)	-10	
0	MINMK	20	TBHV	0	PE	10 -0.25	CORRECTION (g/cc)	0.25
			0 (ft3)	10				



0	GAMMA RAY (GAPI)	150	ABHV	30	COMPENSATED DENSITY (pu)				-10
6	CALIPER (in)	16	10 (ft3) 0	30	COMPENSATED NEUTRON (pu)				-10
0	MINMK	20	0 (ft3) 10	0	PE	10	-0.25	CORRECTION (g/cc)	0.25

Calibration Report

Database File: 409130pe.db
 Dataset Pathname: pass3.3
 Dataset Creation: Wed May 30 16:10:31 2012 by Calc Open-Cased 110302

Dual Induction Calibration Report

Serial-Model: DIL3-GEAR
 Performed: Wed May 30 15:24:33 2012

Loop:	Readings				References			Results	
	Air	Loop			Air	Loop		m	b
Deep	0.011	0.656	V	0.000	400.000	mmho/m	640.000	4.000	
Medium	0.013	0.740	V	0.000	462.500	mmho/m	700.000	-9.000	
Internal:	Zero	Cal		Zero	Cal		m	b	
Deep	0.002	0.645	V	0.000	400.000	mmho/m	622.059	-1.071	
Medium	0.007	0.740	V	0.000	462.500	mmho/m	631.393	-4.555	

Litho Density Calibration Report

Serial: 006 Model: PRB
 Performed Sun Aug 15 09:48:41 2010

Litho Density Calibration

	Background	Magnesium	Aluminum	Sandstone	
Window 1	1686.6	11612.8	3932.0	12718.8	cps
Window 2	1531.4	9204.7	3267.8	9851.9	cps
Window 3	1198.3	4733.6	1952.5	4920.6	cps
Window 4	317.3	321.2	325.9	303.6	cps
Long Space	0.0	7673.3	1736.4	8320.4	cps
Short Space	1.7	2548.5	1657.2	2628.8	cps
Rho		1.7100	2.5900	1.3800	g/cc
Pe			2.5700	1.5500	
Rib Angle	: 43.8	Rib Slope	: 0.961	Density/Spine Ratio	: 0.569
Spine Angle	: 73.8	Spine Slope	: 3.453	Spine Intercept	: -18.1

Caliper

	Readings	Reference
Low Ref	4.0	8.4
High Ref	5.9	15.0
Gain:	3.4	Offset: -5.2

Compensated Neutron Calibration Report

Serial Number: 070808
 Tool Model: Probe

PRE-SURVEY VERIFICATION

Detector	Readings	Measured	Target
Short Space		cps	

Long Space

cps

pu

pu

POST-SURVEY VERIFICATION

Detector

Readings

Measured

Target

Short Space

cps

Long Space

cps

pu

pu

Gamma Ray Calibration Report

Serial Number:

070559

Tool Model:

OPEN_GR

Performed:

Tue May 22 19:38:45 2012

Calibrator Value:

1.0

GAPI

Background Reading:

0.0

cps

Calibrator Reading:

1.0

cps

Sensitivity:

0.3000

GAPI/cps