



DIGITAL LOG (785) 625-3858

Microresistivity Log

API No. 15-109-21,080-00-00

Company Brito Oil Company, Inc.
Well Fairleigh "D" #1-7
Field Wildcat
County Logan State Kansas

Location 945' FSL & 2082' FWL
Sec: 7 Twp: 15 S Rge: 32 W
Permanant Datum Ground Level Elevation 2731
Log Measured From Kelly Bushing 5 Ft. Above Perm. Datum
Drilling Measured From Kelly Bushing

Other Services
CNL/CDL
DIL

Elevation

K.B. 2736
D.F.
G.L. 2731

Table with columns: Date, Run Number, Depth Driller, Depth Logger, Bottom Logged Interval, Top Log Interval, Casing Driller, Casing Logger, Bit Size, Type Fluid in Hole, Salinity, ppm CL, Density / Viscosity, pH / Fluid Loss, Source of Sample, Rm @ Meas. Temp, Rmf @ Meas. Temp, Rmc @ Meas. Temp, Source of Rmf / Rmc, Rm @ BHT, Operating Rig Time, Max Rec. Temp. F, Equipment Number, Location, Recorded By, Witnessed By.

<<< Fold Here >>>

All interpretations are opinions based on inferences from electrical or other measurements and we cannot and do not guarantee the accuracy or correctness of any interpretation, and we shall not, except in the case of gross or willful negligence on our part, be liable or responsible for any loss, costs, damages, or expenses incurred or sustained by anyone resulting from any interpretation made by any of our officers, agents or employees. These interpretations are also subject to our general terms and conditions set out in our current Price Schedule.

Comments

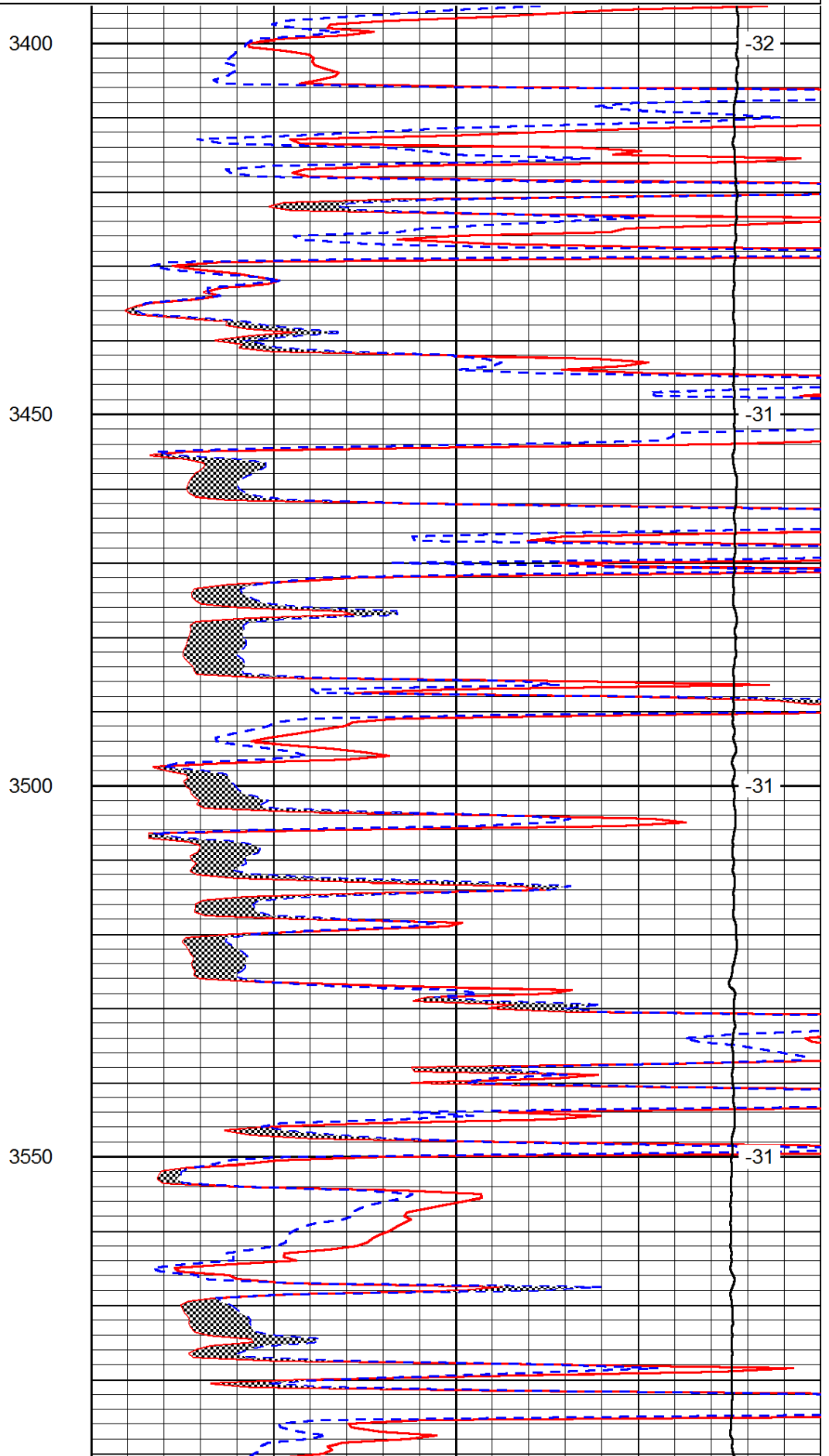
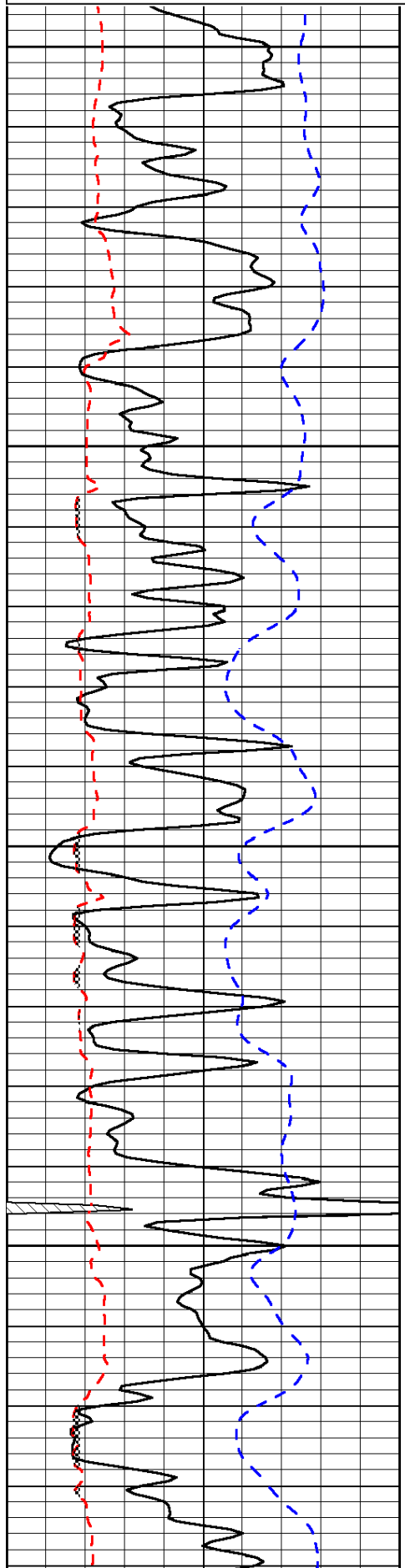
Thank you for using Log-Tech, Inc.
(785) 625-3858
Oakley, 23 S to Gold rd (across river),
4 1/2 W to T intersection,
1 1/2 S to Tank Bat.,
1 1/2 E (through red gate, across 2 cattle guards),
S into

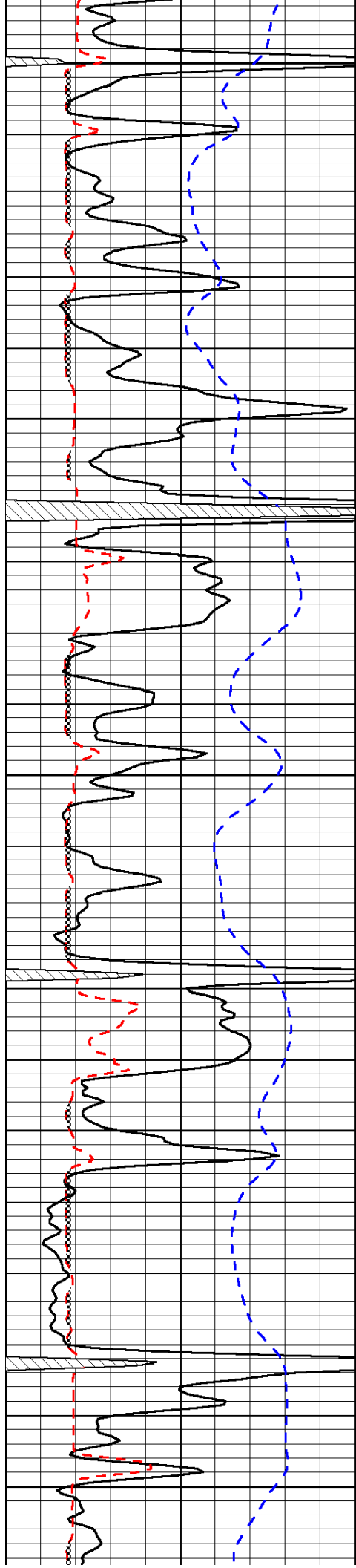
Database File: c:\warrior\data\brito_fairleigh d #1-7\brito050412hd.db
Dataset Pathname: dil/britostk
Presentation Format: micro
Dataset Creation: Fri May 04 22:29:23 2012
Charted by: Depth in Feet scaled 1:240

0	Gamma Ray	150
6	Micro Log Caliper (GAPI)	16
-200	SP (mV)	0

0	Micro Inverse 1 X 1	40
0	Micro Normal 2"	40
15000	Line Weight	0

LSPD





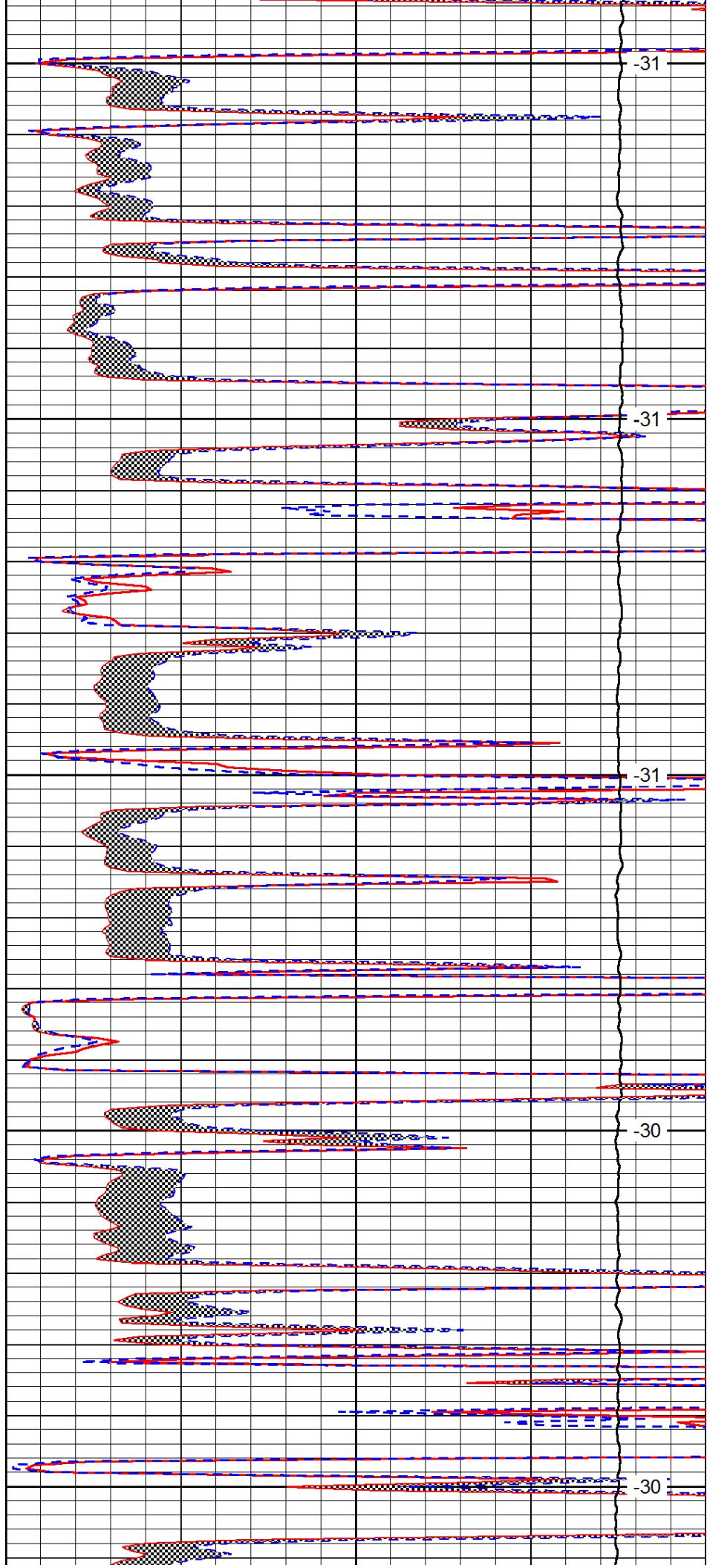
3600

3650

3700

3750

3800



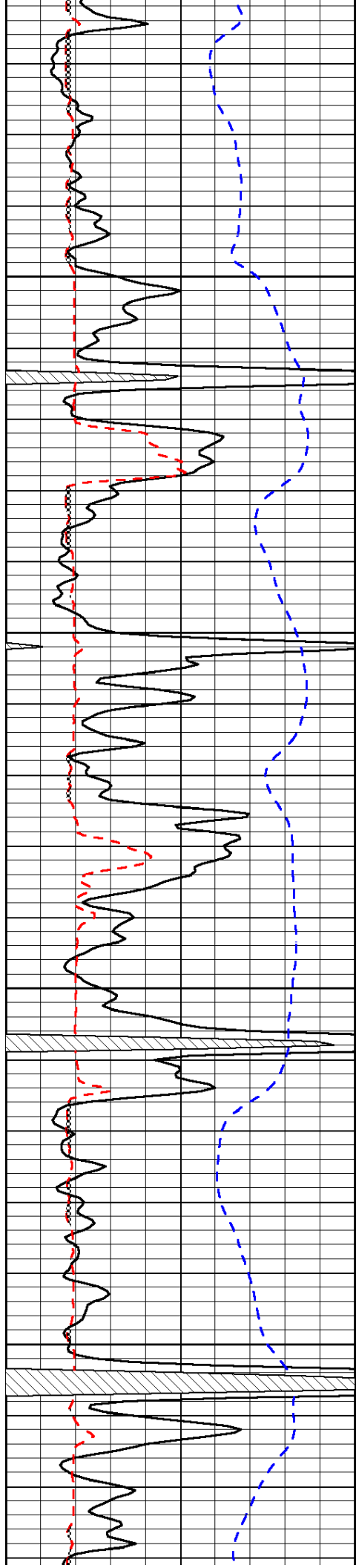
-31

-31

-31

-30

-30

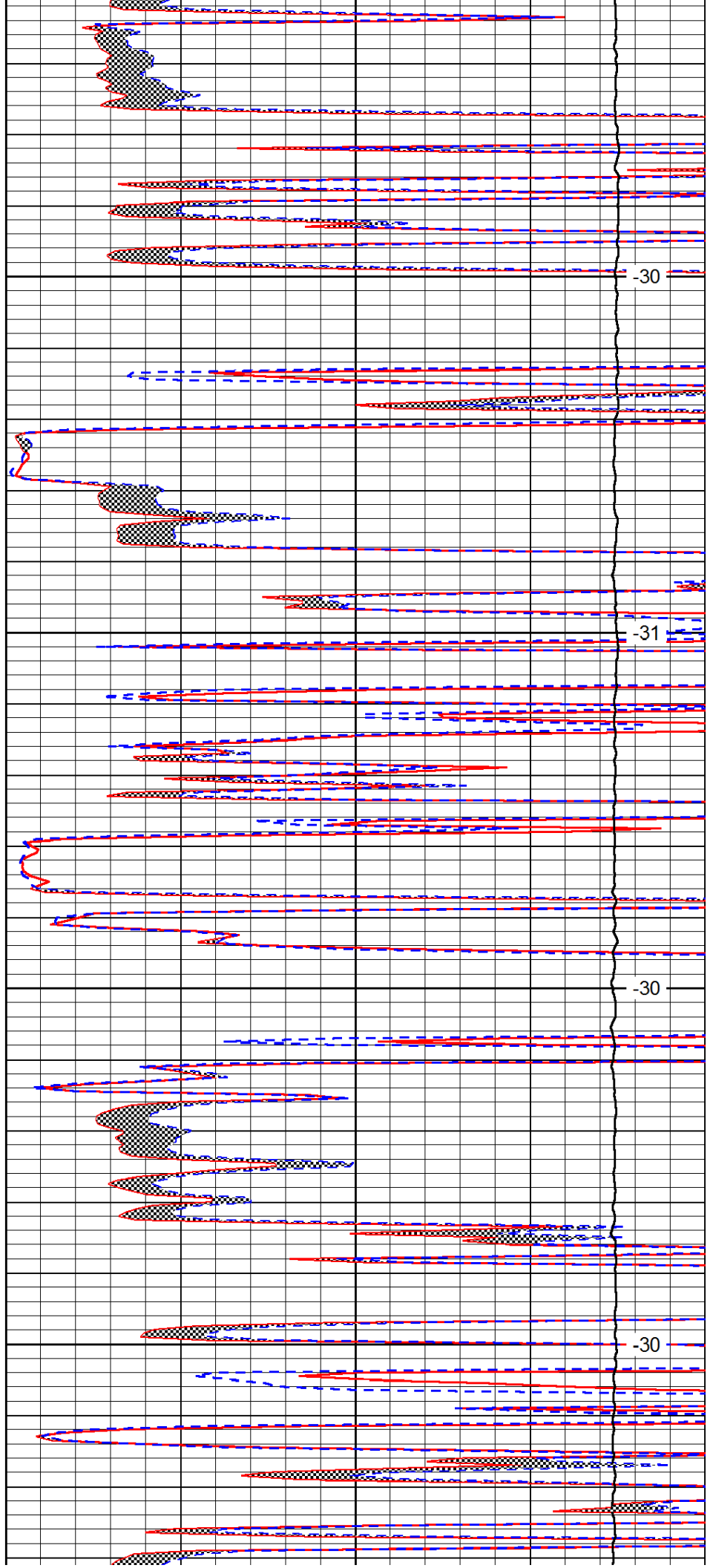


3850

3900

3950

4000

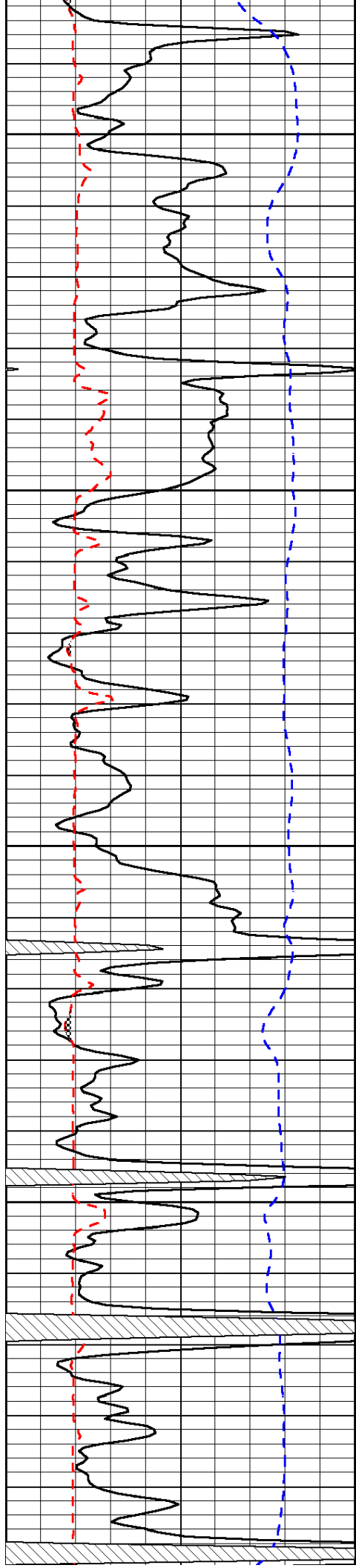


-30

-31

-30

-30



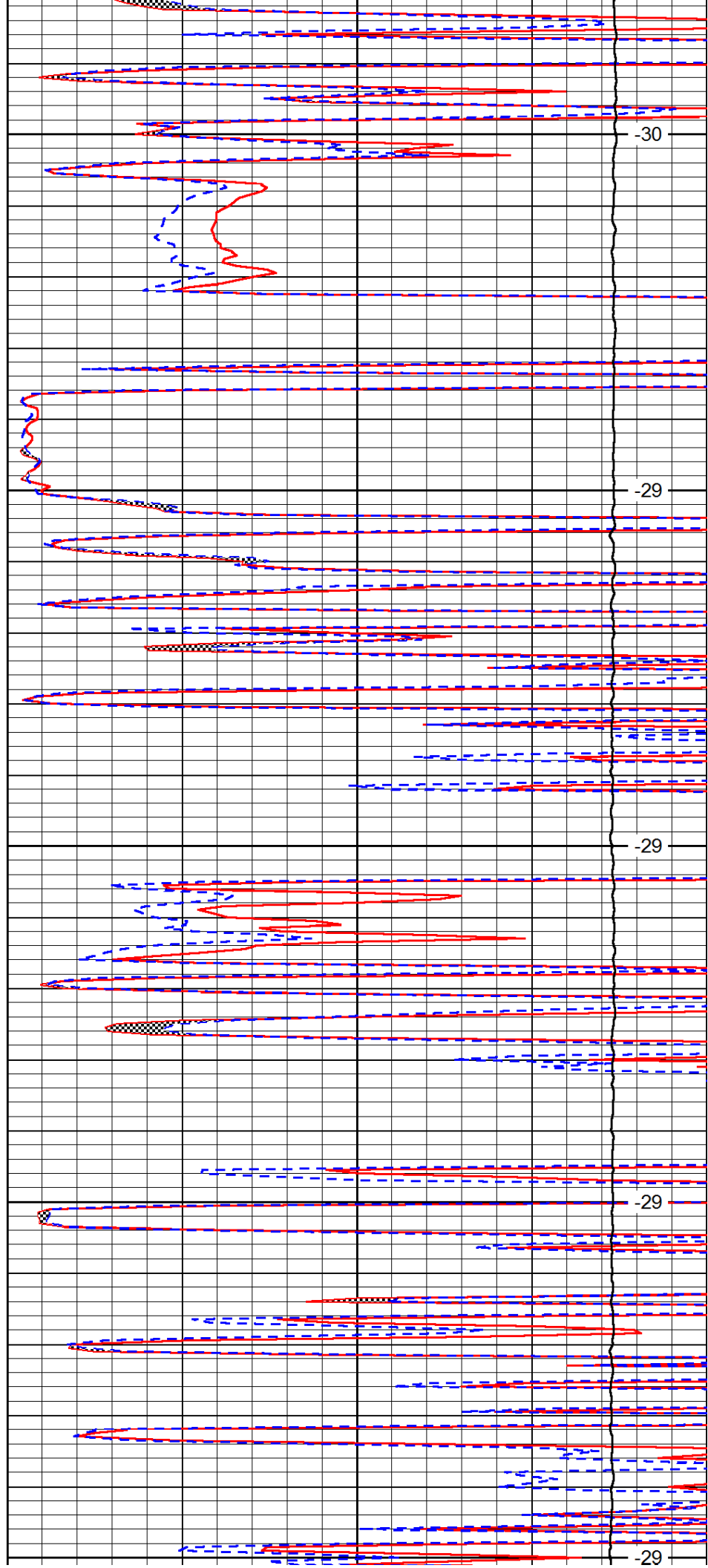
4050

4100

4150

4200

4250



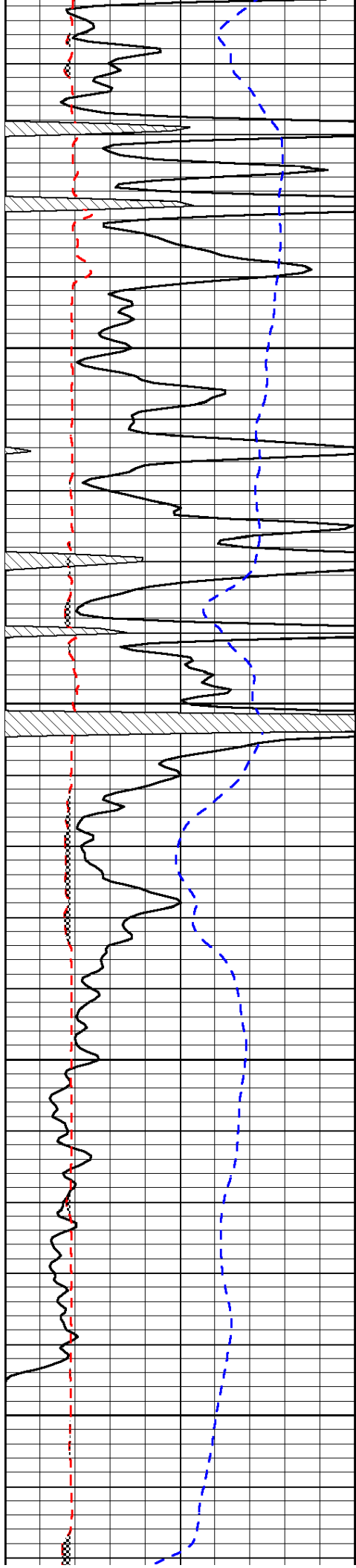
-30

-29

-29

-29

-29

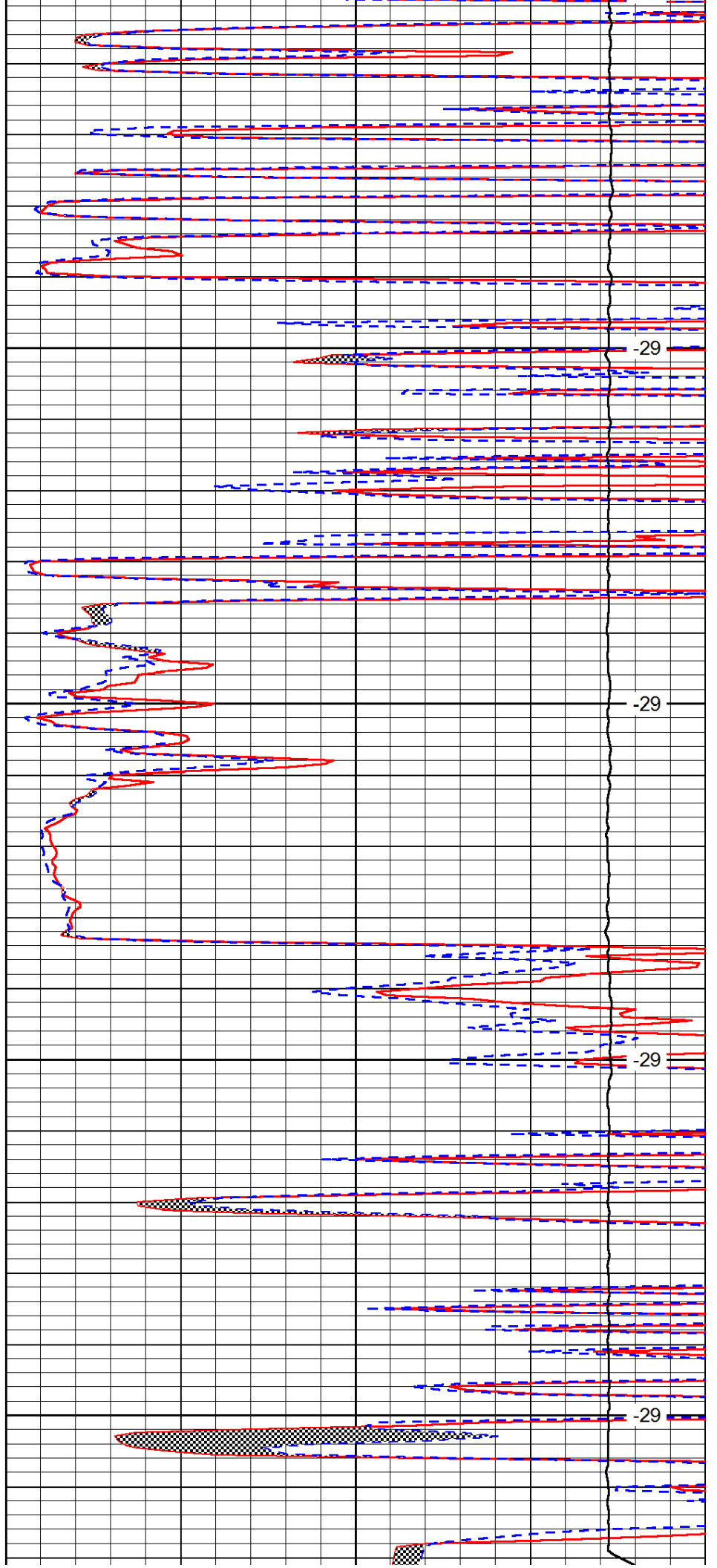


4300

4350

4400

4450

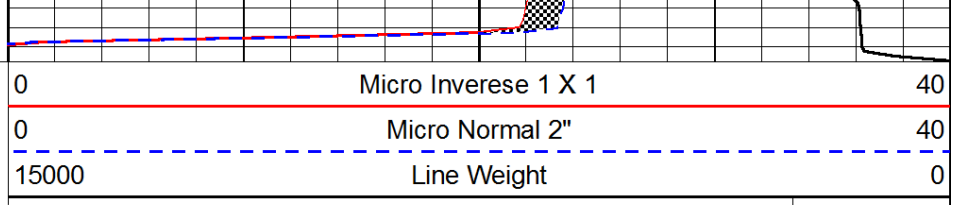
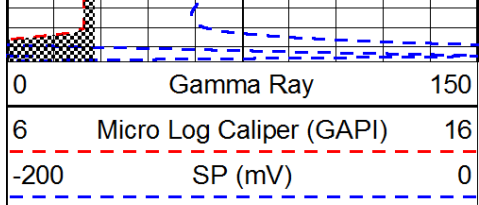


-29

-29

-29

-29



LSPD