



Pioneer Energy Services

Borehole Compensated Sonic Log

API No.	15-161-20079-00-00		
Company	CFA Oil Co.		
Well	Downey Ranch, Inc. #2		
Field	Wildcat		
County	Riley	State Kansas	
Location	330' FNL & 3852' FEL		
Sec:	29	Twp:	10S Rge: 9E
Permanent Datum	Ground Level	Elevation	1006.98
Log Measured From	Kelly Bushing	10 Ft. Above Perm. Datum	
Drilling Measured From	Kelly Bushing		
Date	8/18/2012	Other Services	DIL CNL/CDL
Run Number	Two	Elevation	1016.98
Type Log	BHC Sonic		
Depth Driller	1620		
Depth Logger	1619		
Bottom Logged Interval	1606		
Top Logged Interval	150		
Type Fluid In Hole	Chemical		
Salinity, PPM CL	1600		
Density	9.2		
Level	Full		
Max. Rec. Temp. F	94		
Operating Rig Time	3 Hours		
Equipment -- Location	91 Hays		
Recorded By	D. Schmidt		
Witnessed By	Don Clark		

Borehole Record		Casing Record					
Run No	Bit	From	To	Size	Wgt.	From	To
One	12.25	0	180	8.625	24#	0	179
Two	7.875	180	TD				

<<< Fold Here >>>

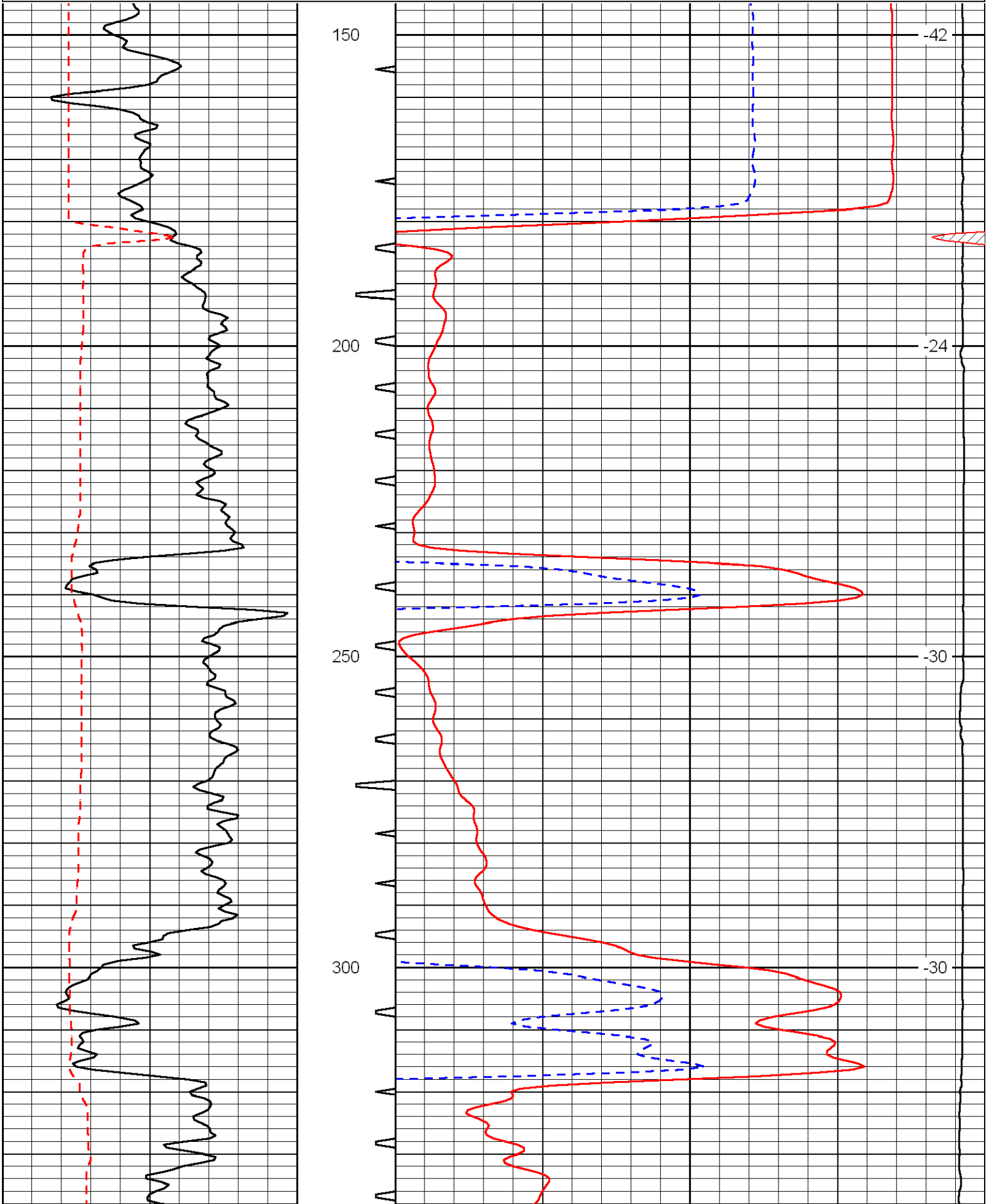
All interpretations are opinions based on inferences from electrical or other measurements and we cannot and do not guarantee the accuracy or correctness of any interpretation, and we shall not, except in the case of gross or willful negligence on our part, be liable or responsible for any loss, costs, damages, or expenses incurred or sustained by anyone resulting from any interpretation made by any of our officers, agents or employees. These interpretations are also subject to our general terms and conditions set out in our current Price Schedule.

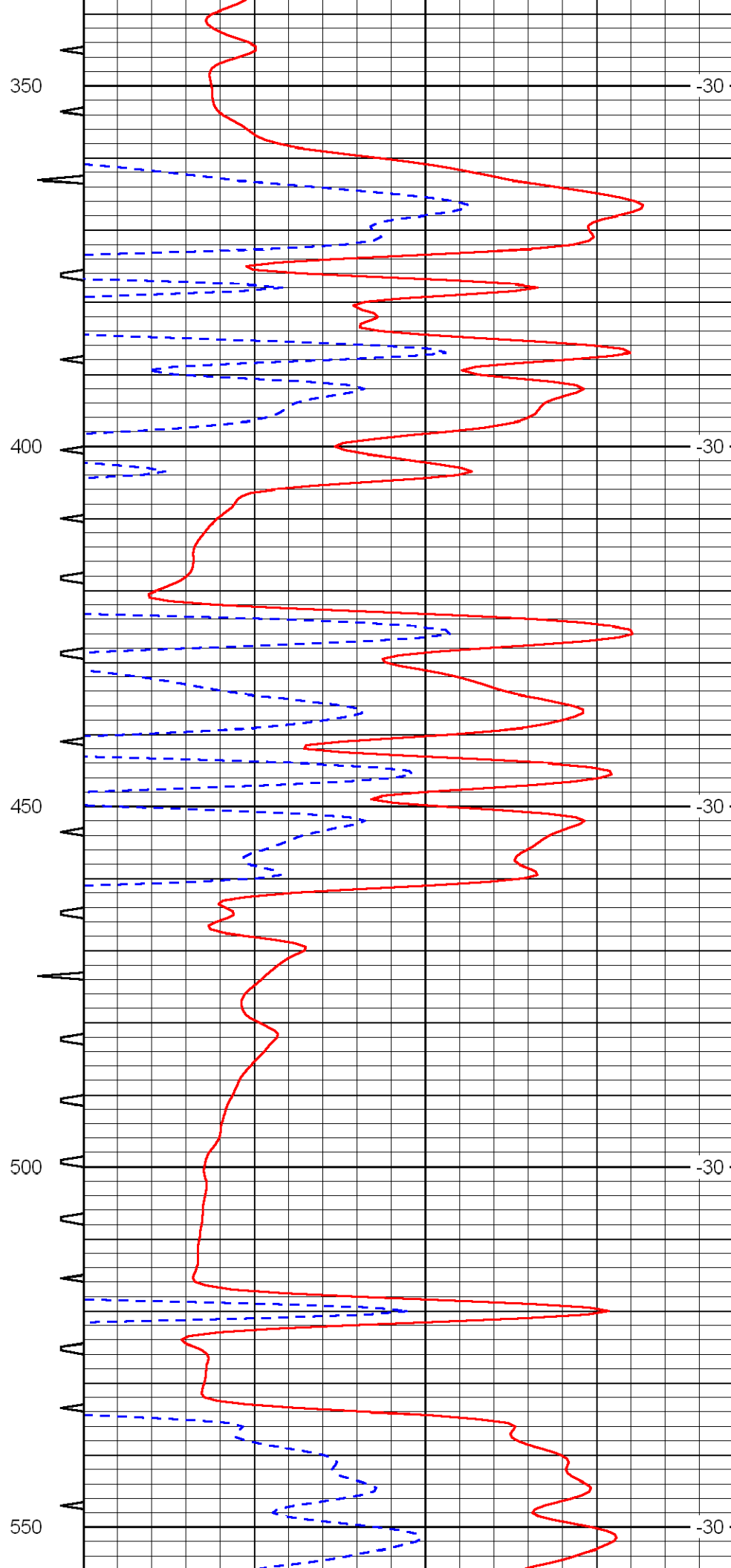
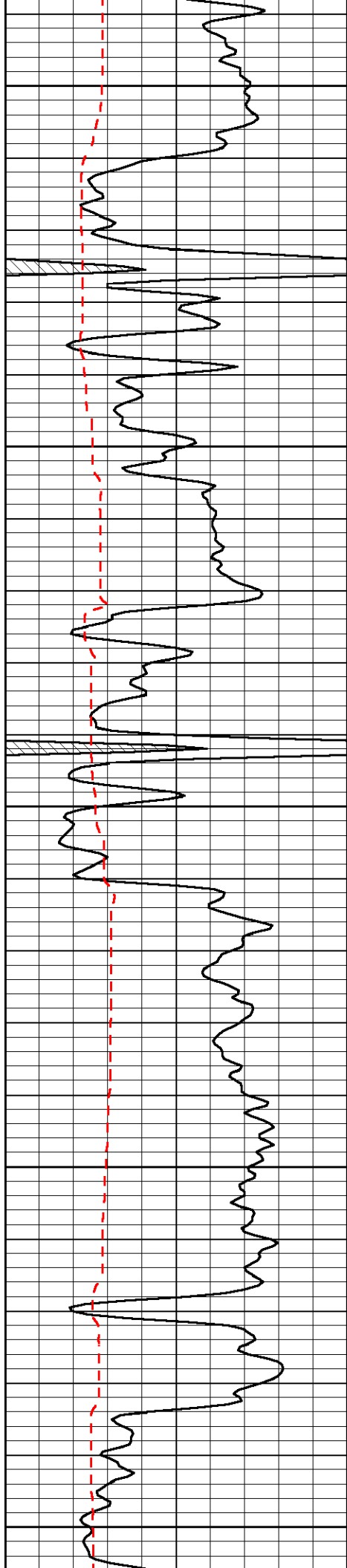
Comments

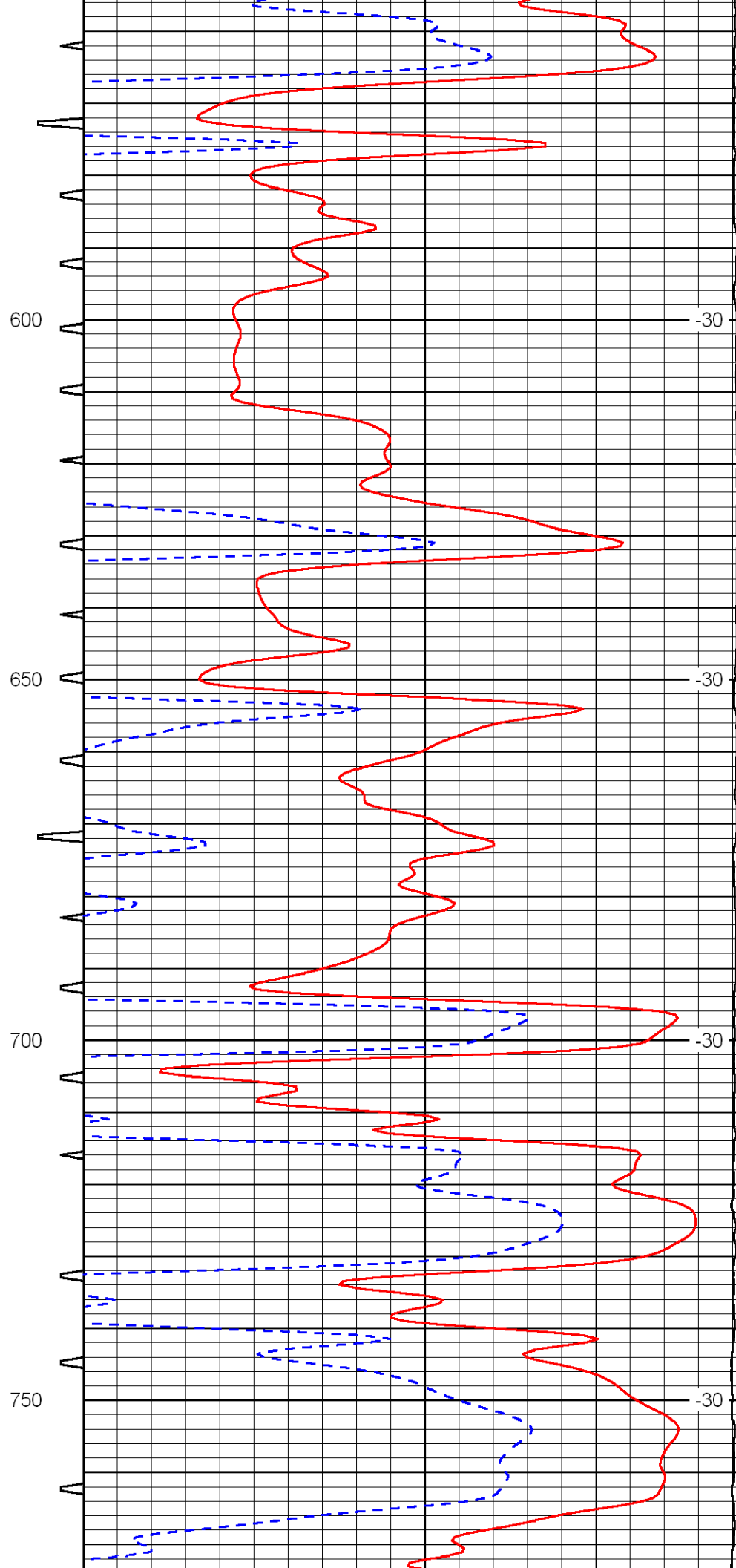
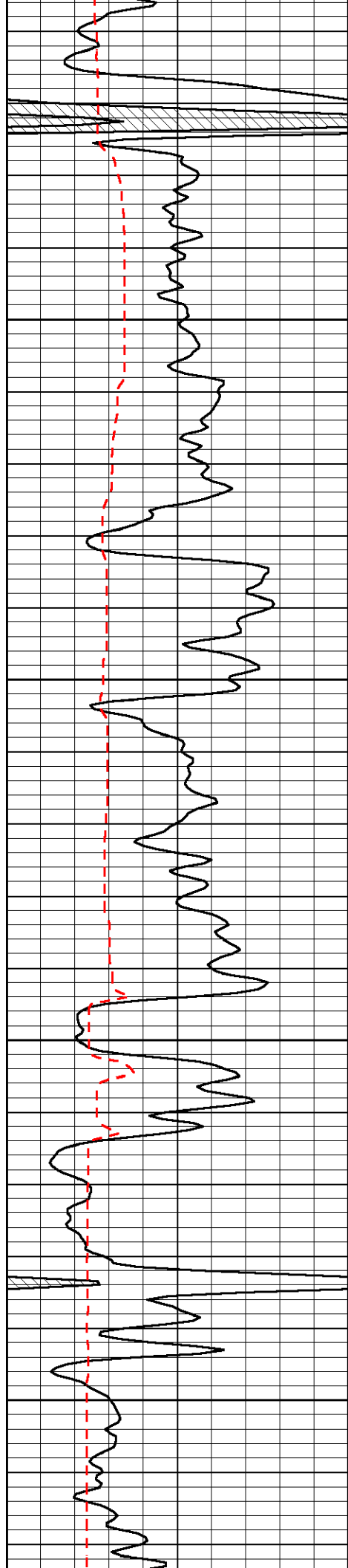
Thank you for using Pioneer Energy Services
www.pioneer.com
 785 625 3858
 I-70 & Hwy 177,
 North to Hwy 18, 6 East,
 South into

Database File:	cfa_081812hd.db
Dataset Pathname:	dil/cfastack
Presentation Format:	sonic
Dataset Creation:	Sat Aug 18 14:22:29 2012
Charted by:	Depth in Feet scaled 1:240

0	Gamma Ray	150	Sonic Int (m/sec)	140	Delta Time (usec/ft) (usec/ft)	40
150	Gamma Ray	300		30	Sonic Porosity (pu)	-10
6	dCAL (GAPI)	16	5	0	15000	LTEN (lb) (lb)
						0
						LSPD (ft/min)







600

-30

650

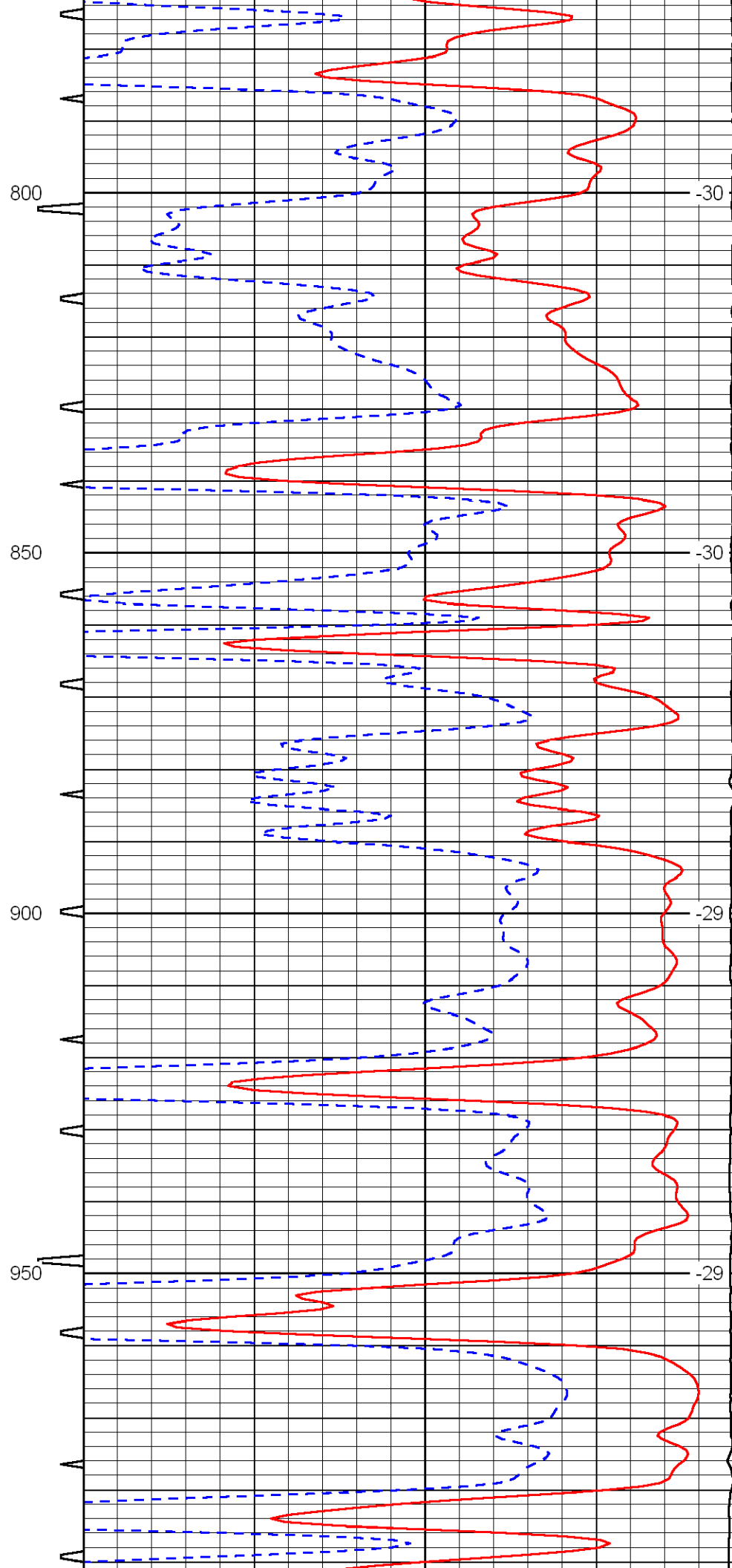
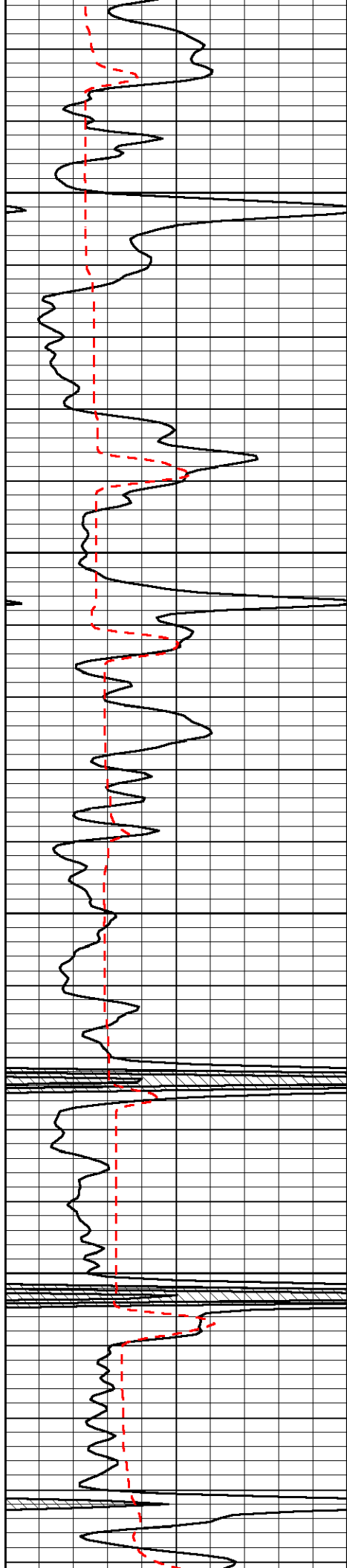
-30

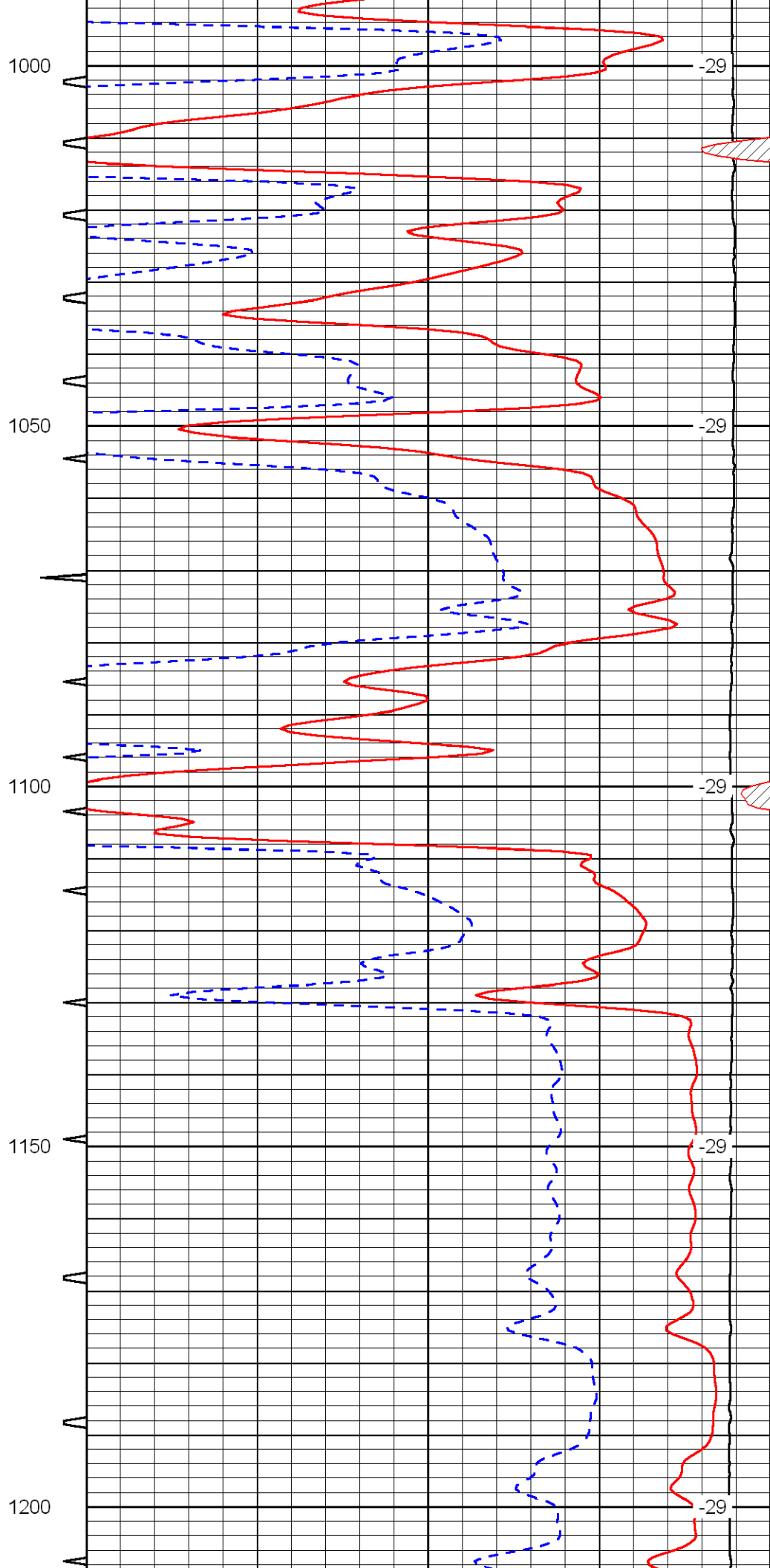
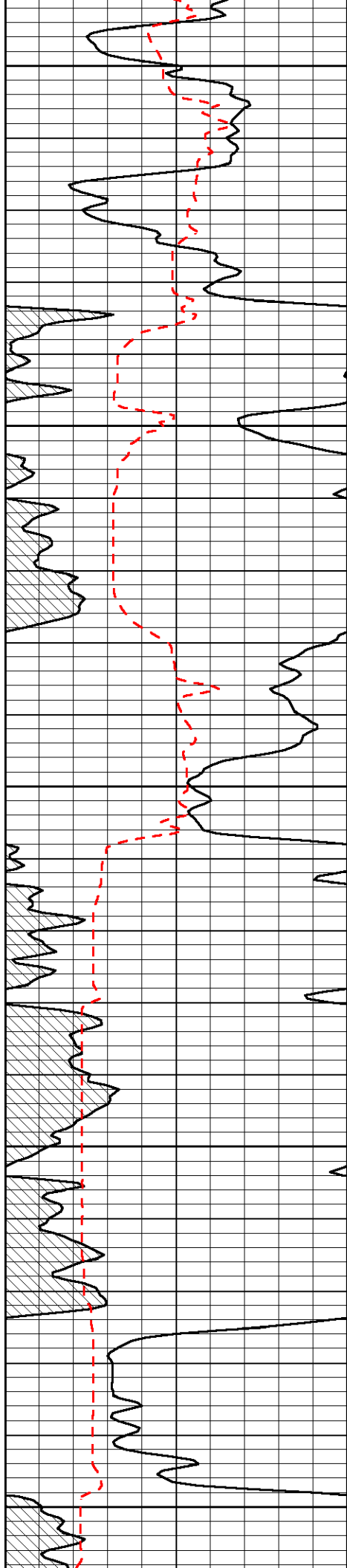
700

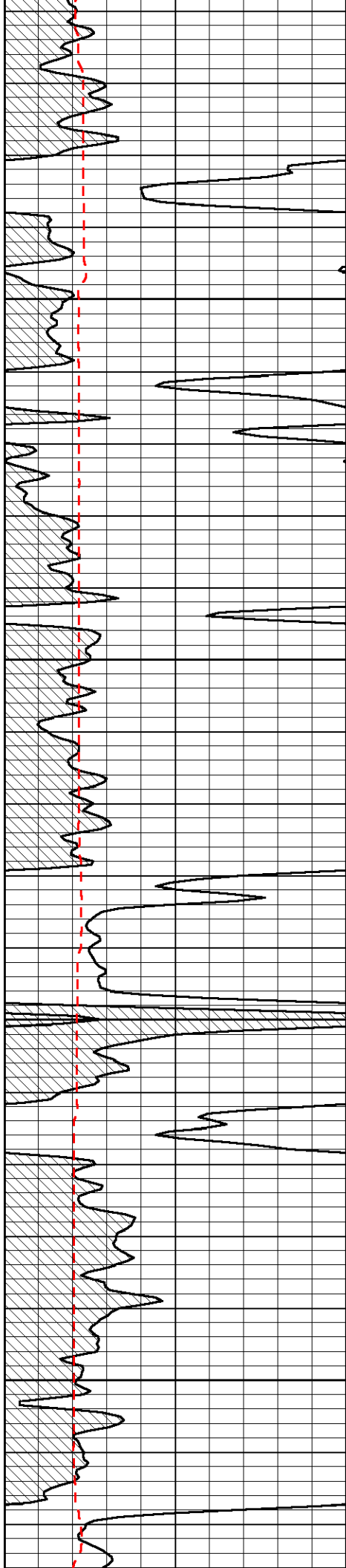
-30

750

-30





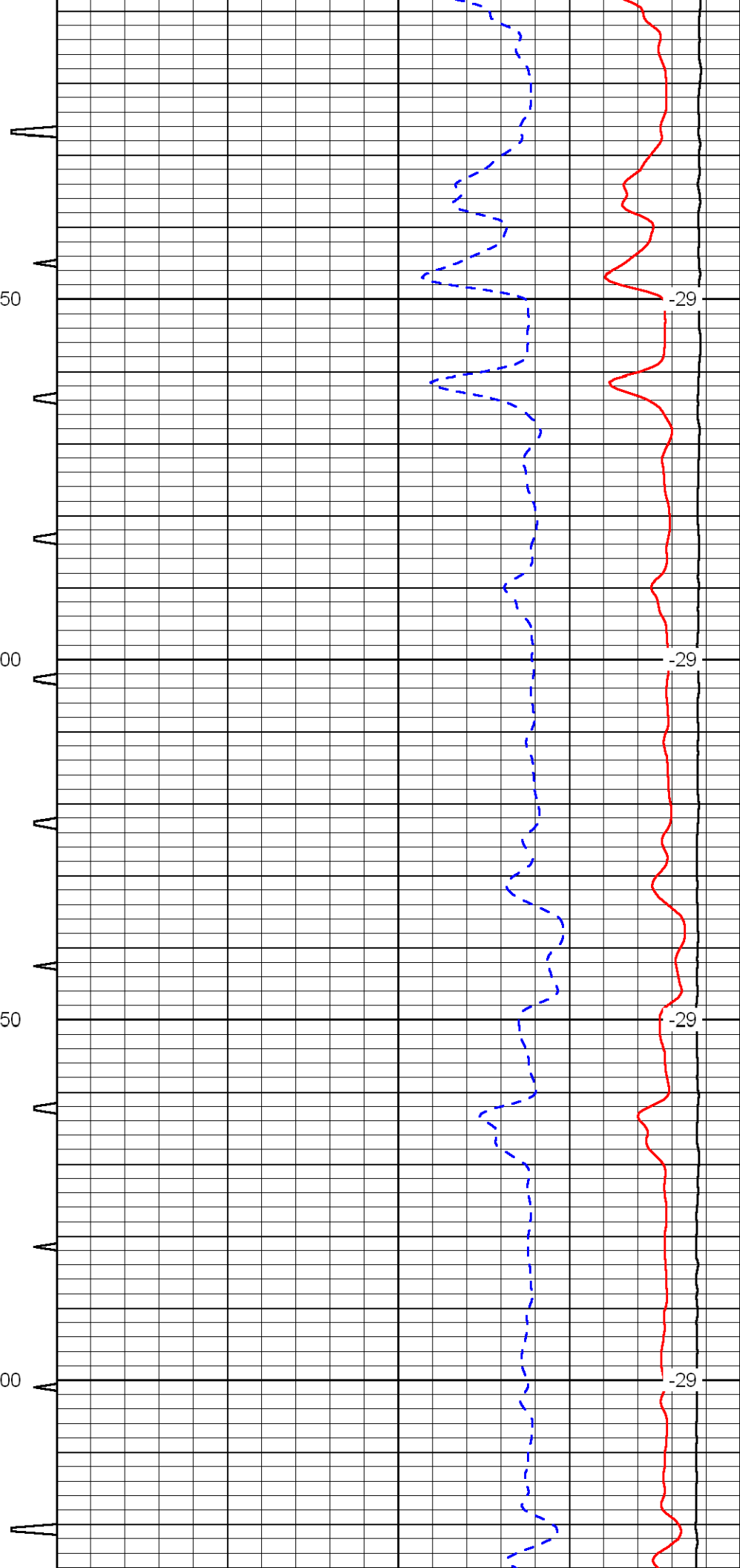


1250

1300

1350

1400

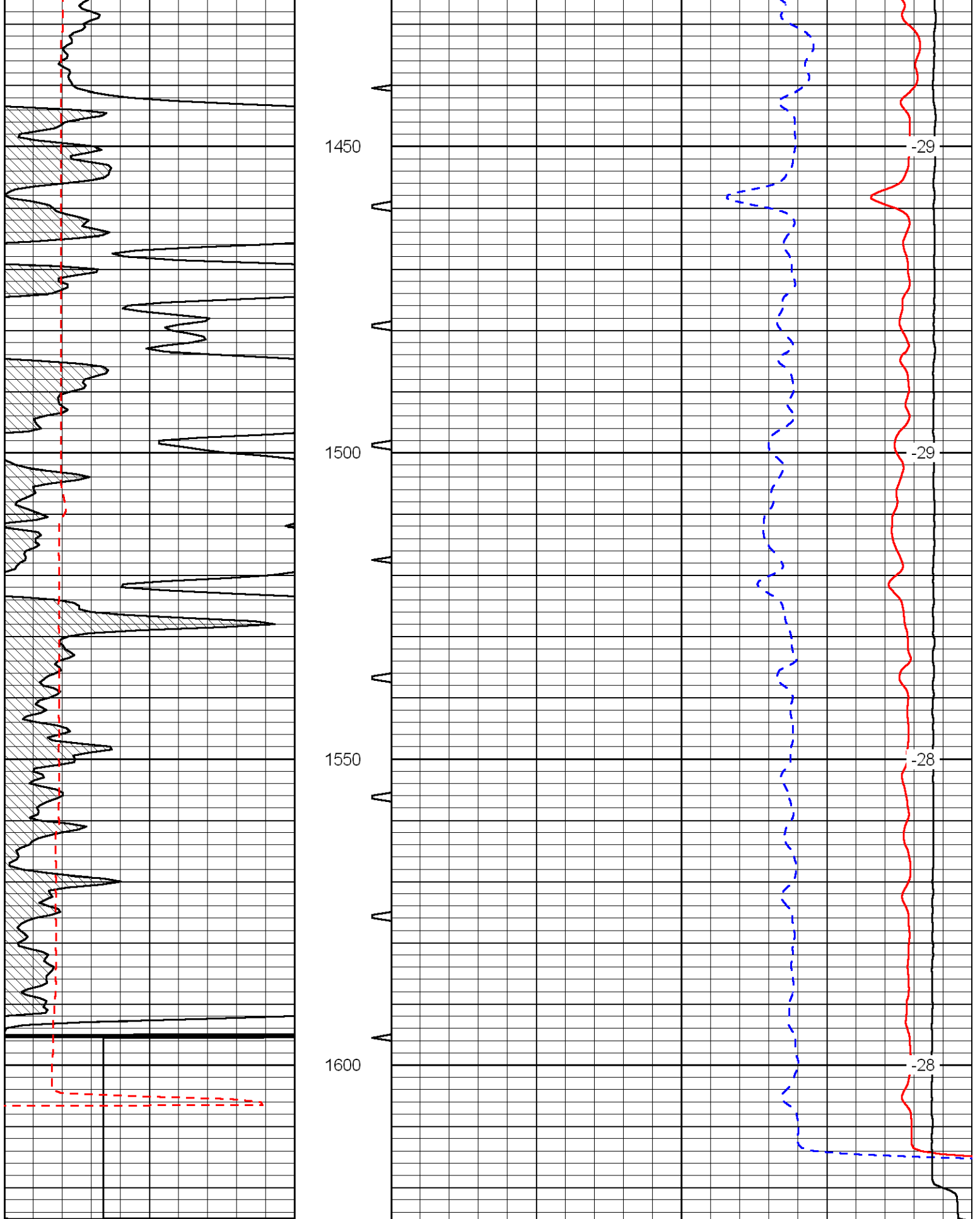


-29

-29

-29

-29



0	Gamma Ray	150	Sonic Int	140	Delta Time (usec/ft) (usec/ft)	40
150	Gamma Ray	300	(m/sec)	30	Sonic Porosity (pu)	-10
6	dCAL (GAPI)	16	5	0	LTEN (lb) (lb)	0
				15000		

LSPD

