



Pioneer Energy Services

## Dual Compensated Porosity Log

API No. 15-161-20079-00-00

Company **CFA Oil Co.**  
 Well **Downey Ranch, Inc. #2**  
 Field **Wildcat**  
 County **Riley** State **Kansas**

Location **330' FNL & 3852' FEL**

Sec: **29** Twp: **10S** Rge: **9E**

Other Services  
 DIL  
 BHCS

Permanent Datum	Ground Level	Elevation 1006.98	Elevation				
Log Measured From	Kelly Bushing	10 Ft. Above Perm. Datum	K.B.	1016.98			
Drilling Measured From	Kelly Bushing		D.F.				
			G.L.	1006.98			
Date	8/18/2012						
Run Number	One						
Type Log	CNL / CDL						
Depth Driller	1620						
Depth Logger	1619						
Bottom Logged Interval	1599						
Top Logged Interval	150						
Type Fluid In Hole	Chemical						
Salinity, PPM CL	1600						
Density	9.2						
Level	Full						
Max. Rec. Temp. F	94						
Operating Rig Time	3 Hours						
Equipment -- Location	91 Hays						
Recorded By	D. Schmidt						
Witnessed By	Don Clark						
Borehole Record		Casing Record					
Run No	Bit	From	To	Size	Wgt.	From	To
One	12.25	0	180	8.625	24#	0	179
Two	7.875	180	TD				

<<< Fold Here >>>

All interpretations are opinions based on inferences from electrical or other measurements and we cannot and do not guarantee the accuracy or correctness of any interpretation, and we shall not, except in the case of gross or willful negligence on our part, be liable or responsible for any loss, costs, damages, or expenses incurred or sustained by anyone resulting from any interpretation made by any of our officers, agents or employees. These interpretations are also subject to our general terms and conditions set out in our current Price Schedule.

Comments

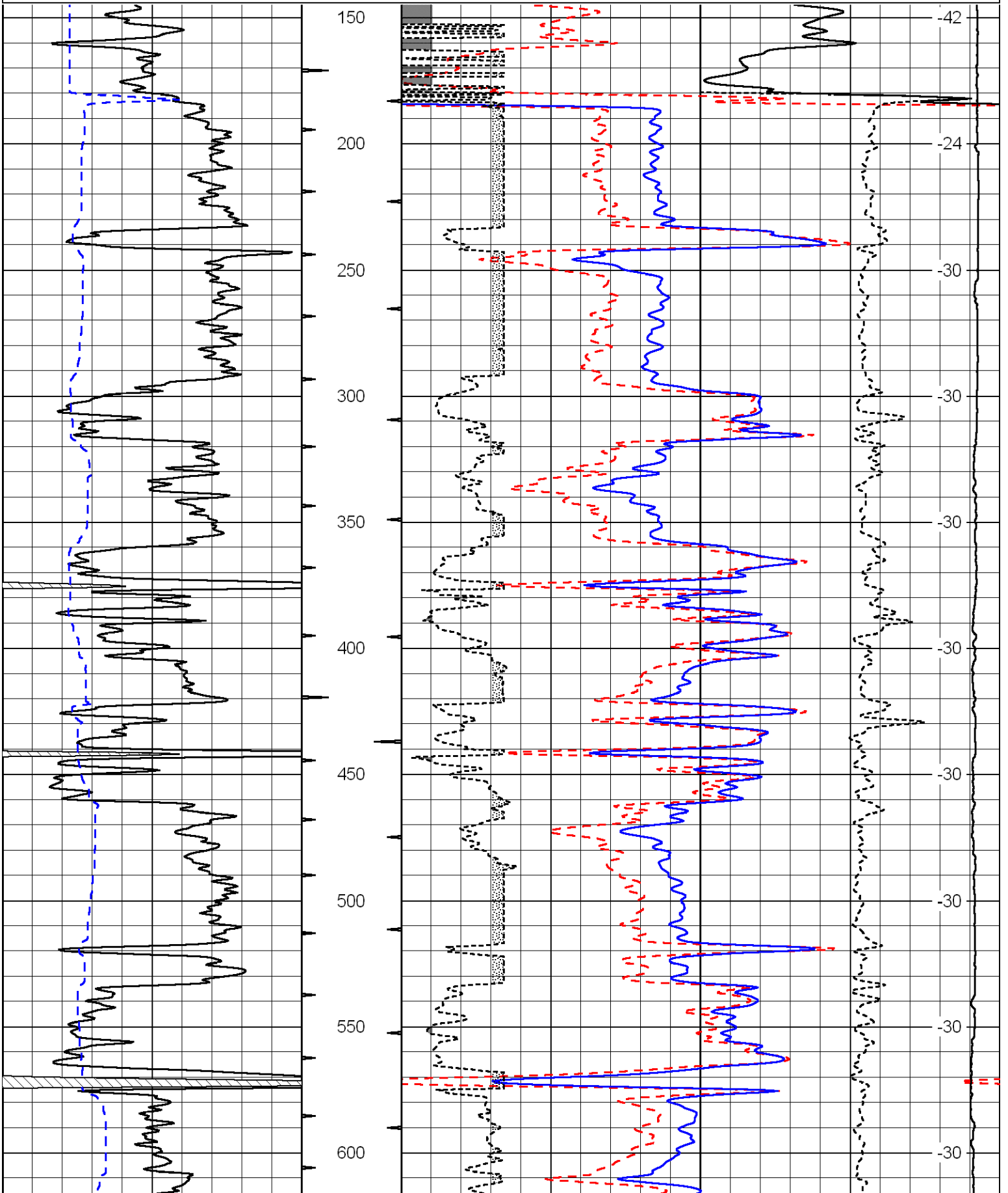
Thank you for using Pioneer Energy Services  
[www.pioneeres.com](http://www.pioneeres.com)  
 785 625 3858  
 I-70 & Hwy 177,  
 North to Hwy 18, 6 East,  
 South into

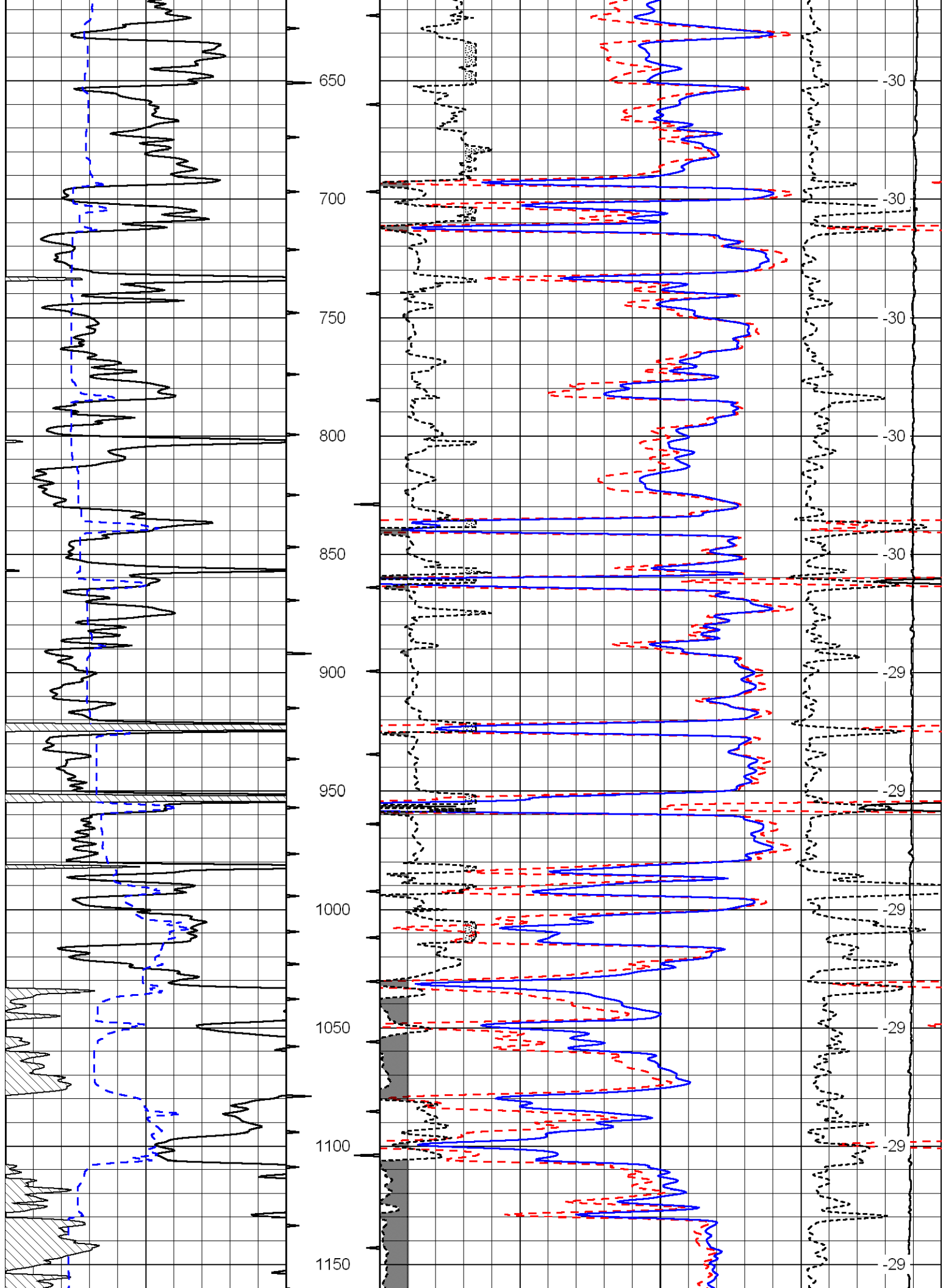
Database File:	cfa_081812hd.db
Dataset Pathname:	dil/cfastack
Presentation Format:	cdl
Dataset Creation:	Sat Aug 18 14:22:29 2012
Charted by:	Depth in Feet scaled 1:600

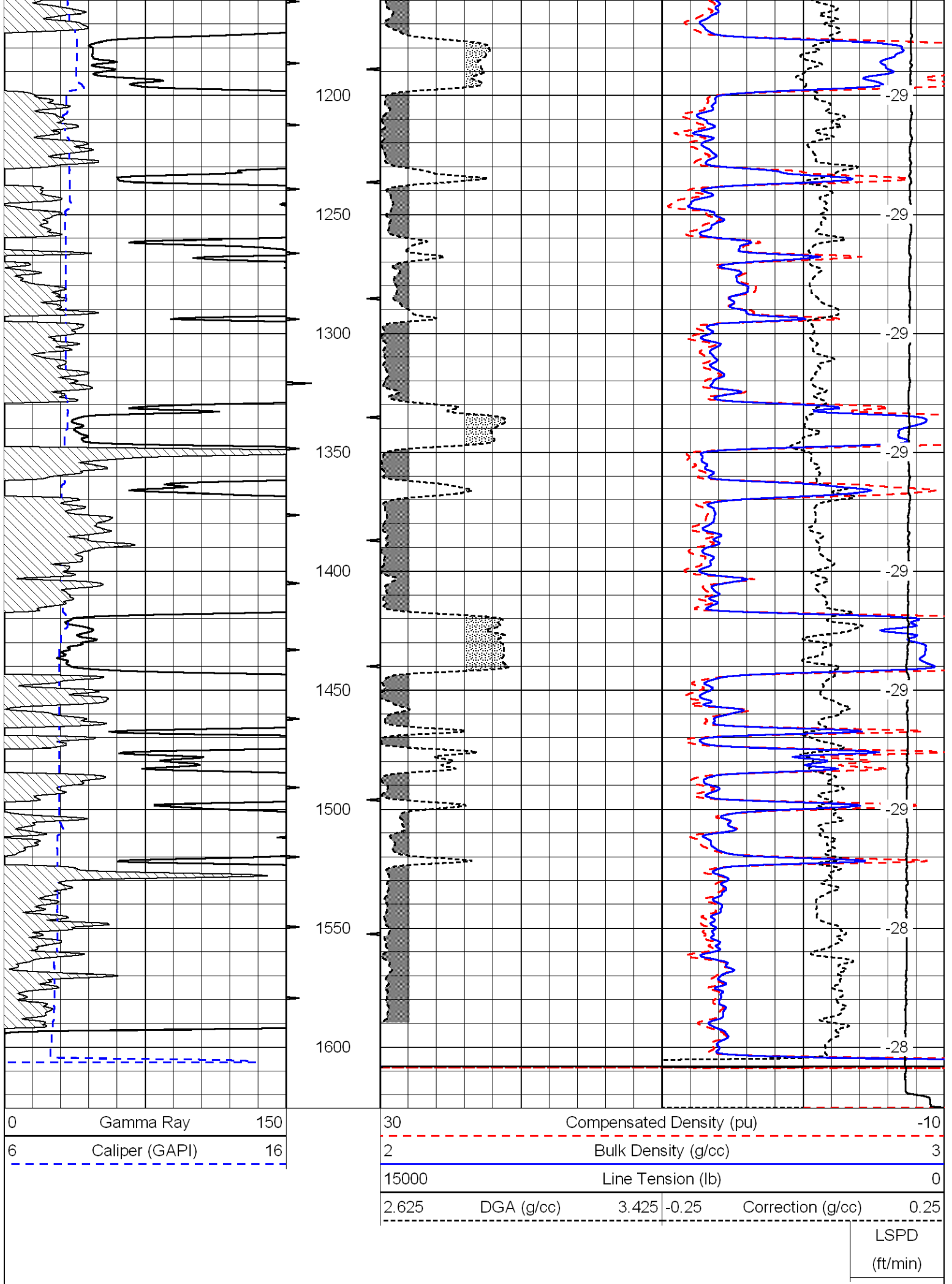
0	Gamma Ray	150
6	Caliper (GAPI)	16

30	Compensated Density (pu)		-10
2	Bulk Density (g/cc)		3
15000	Line Tension (lb)		0
2.625	DGA (g/cc)	3.425	-0.25
Correction (g/cc)			0.25

LSPD  
(ft/min)

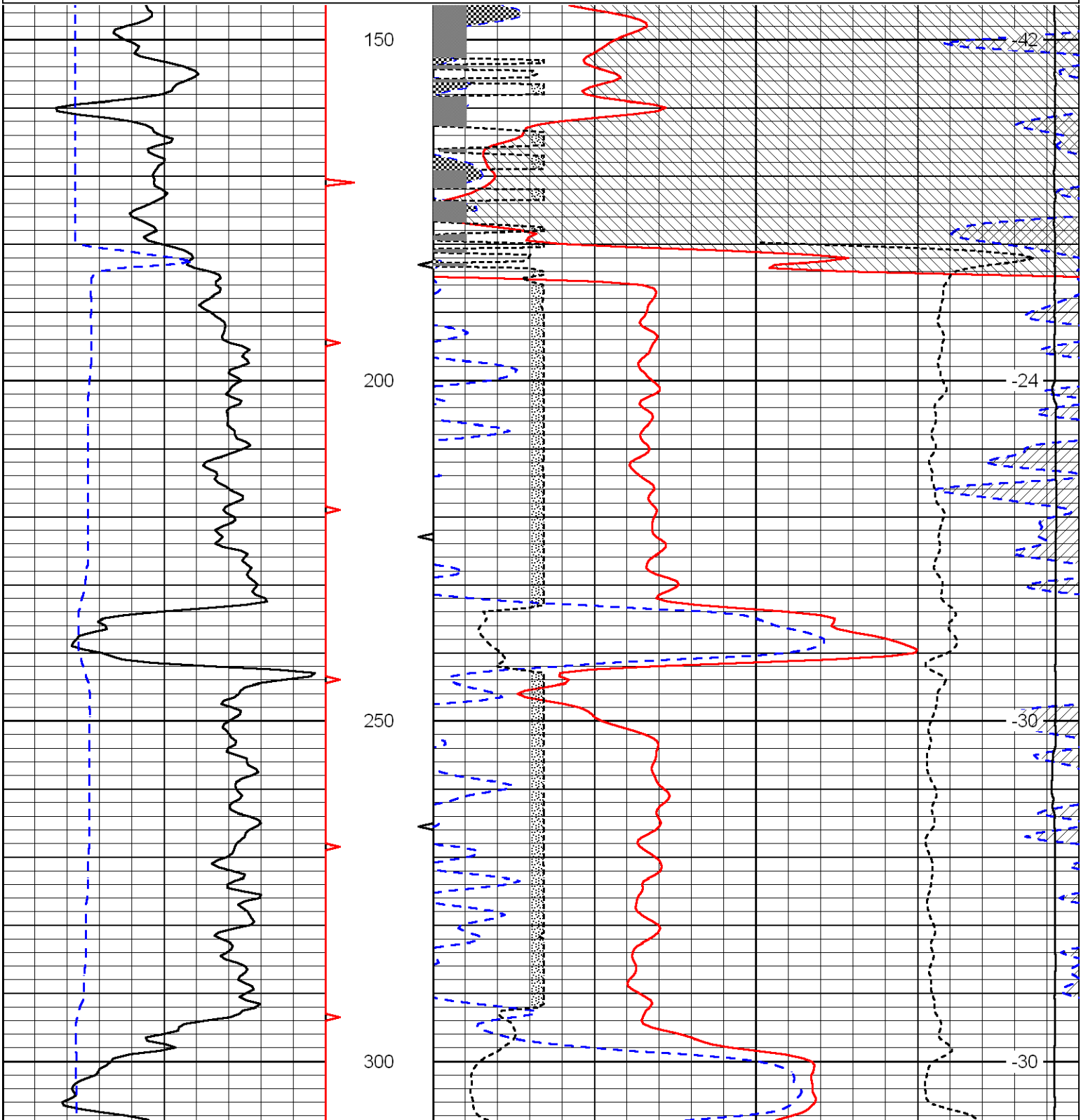


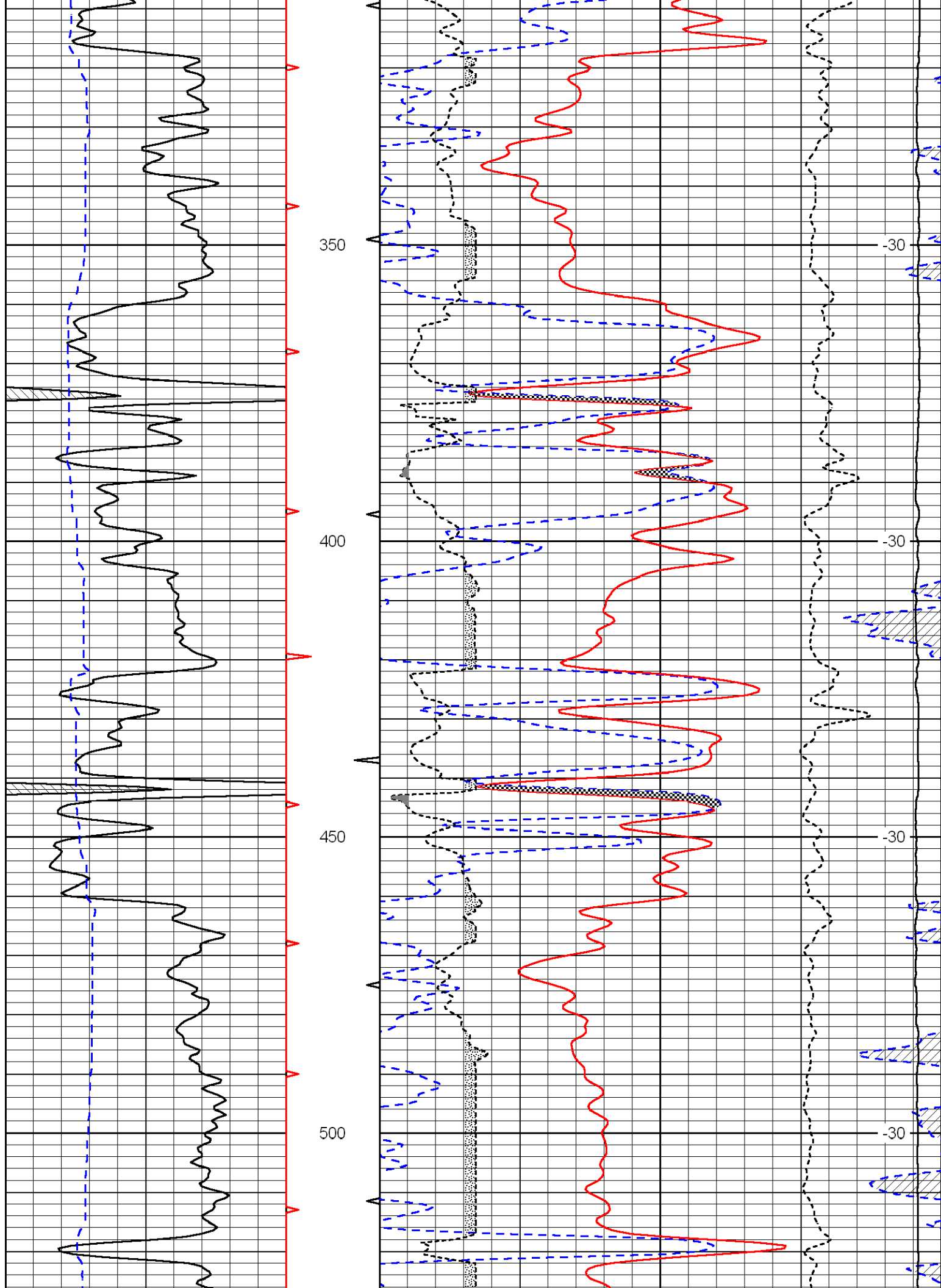


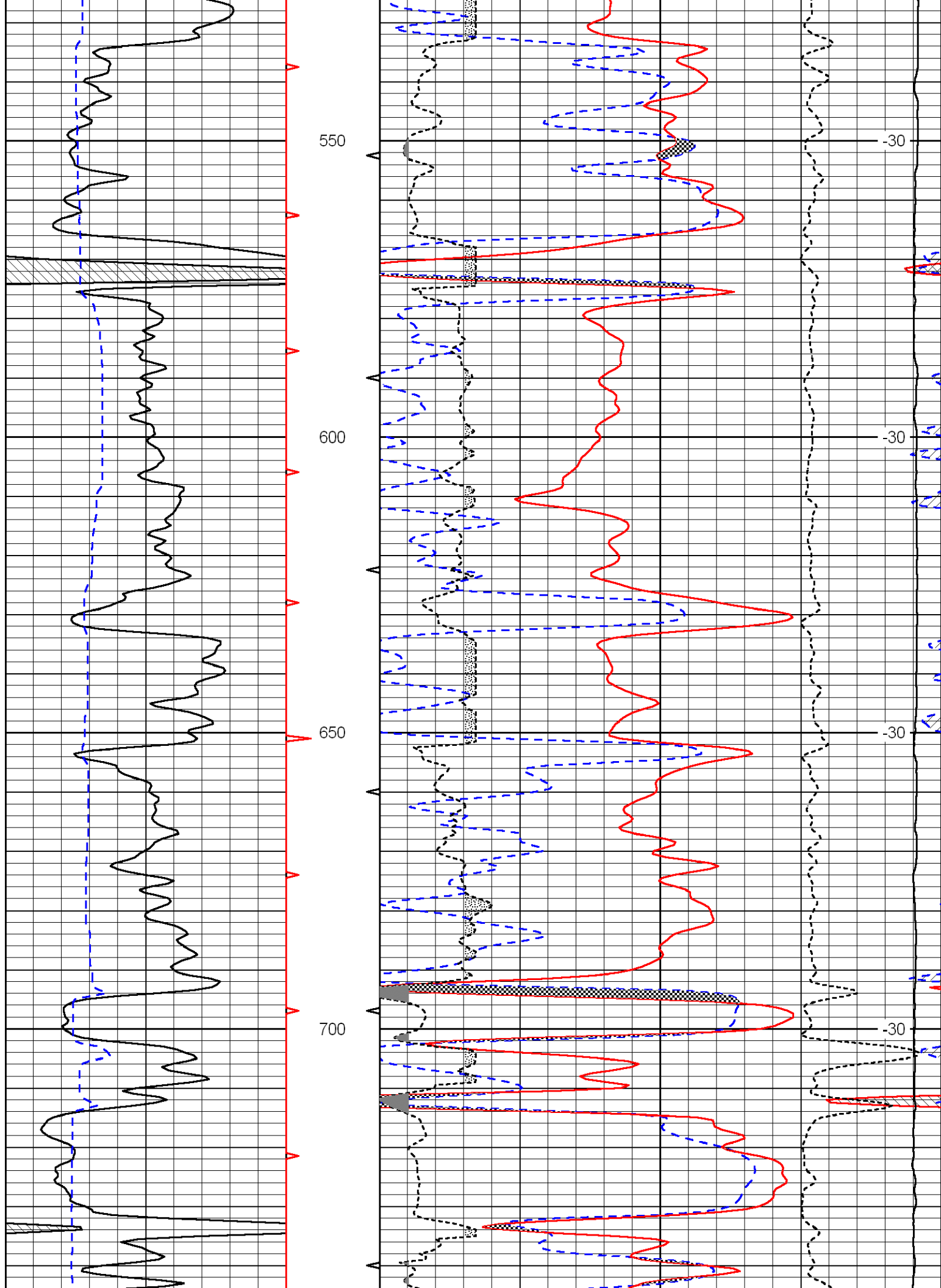


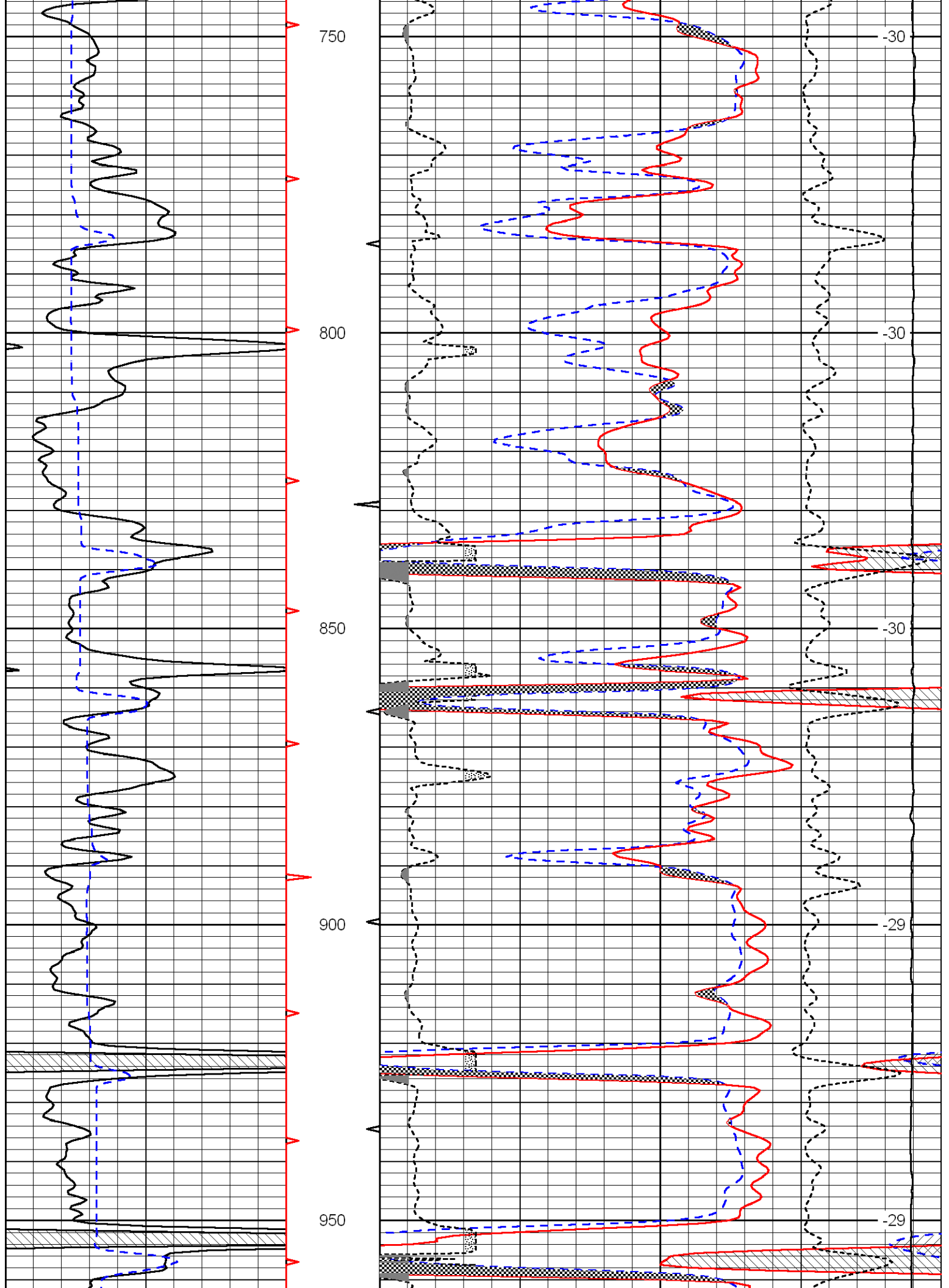
Database File: cfa\_081812hd.db  
 Dataset Pathname: dil/cfastack  
 Presentation Format: cndlspec  
 Dataset Creation: Sat Aug 18 14:22:29 2012  
 Charted by: Depth in Feet scaled 1:240

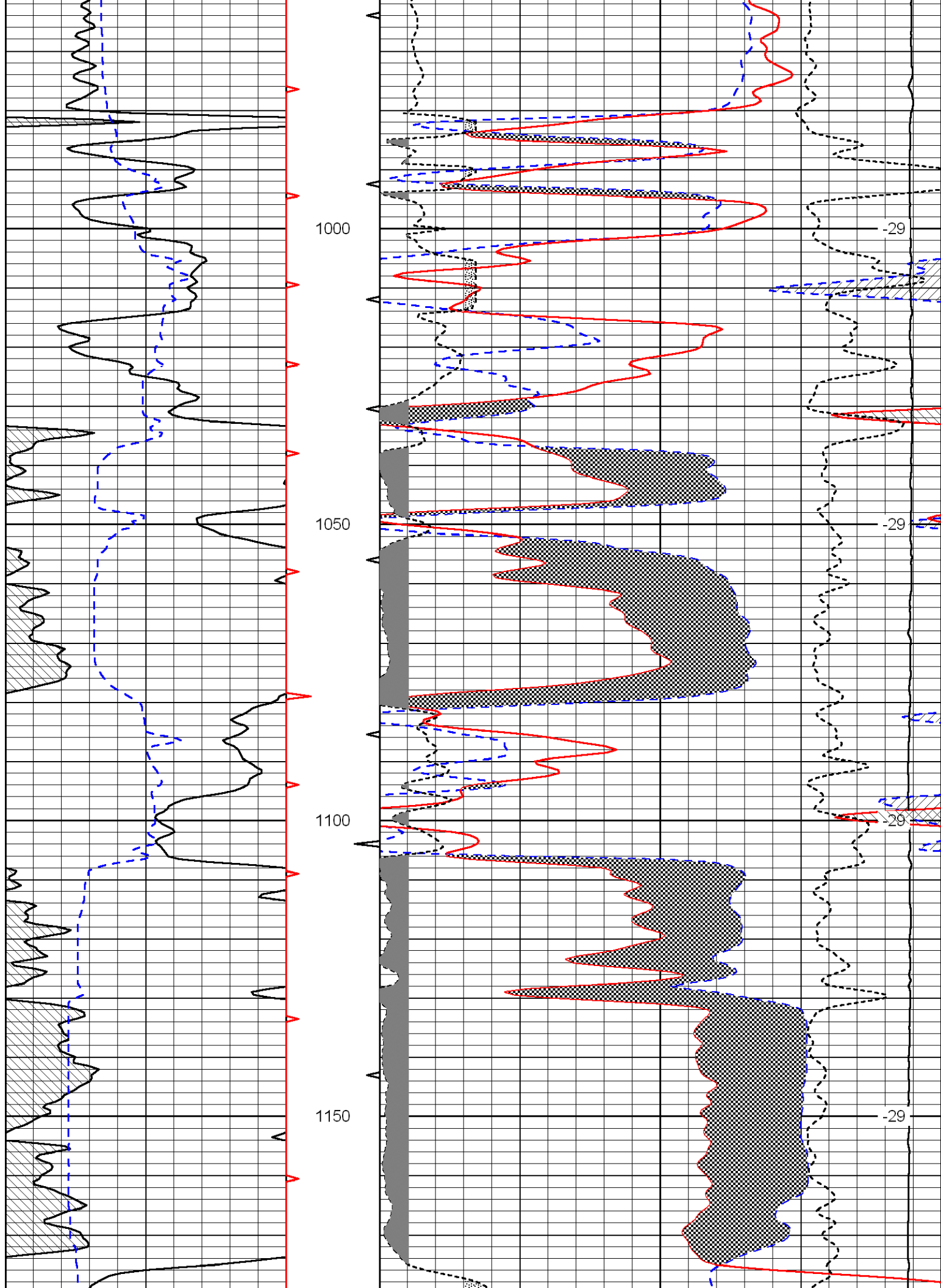
0	Gamma Ray	150	30	Compensated Neutron (pu)		-10
6	Caliper (GAPI)	16	30	Compensated Density (2.71 ma) (pu)		-10
			2.625	DGA (g/cc)	3.425	-0.25
				Correction (g/cc)		0.25
			15000	Line Tension (lb)		0
						LSPD (ft/min)

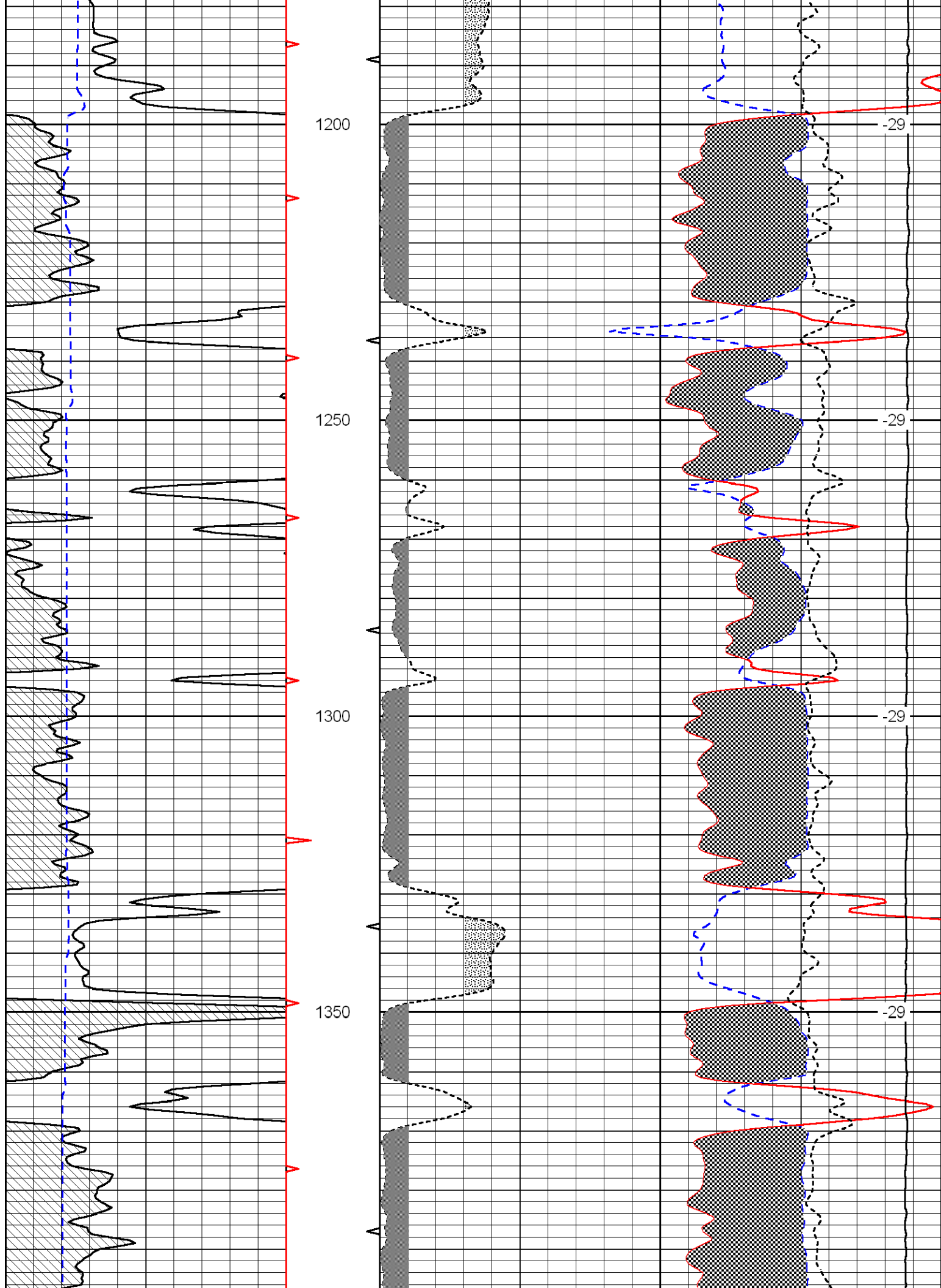














0	Gamma Ray	150
---	-----------	-----

6	Caliper (GAPI)	16
---	----------------	----

30	Compensated Neutron (pu)	-10
----	--------------------------	-----

30	Compensated Density (2.71 ma) (pu)	-10
----	------------------------------------	-----

2.625	DGA (g/cc)	3.425	-0.25	Correction (g/cc)	0.25
-------	------------	-------	-------	-------------------	------

15000	Line Tension (lb)	0
-------	-------------------	---

LSPD (ft/min)
------------------