



Pioneer Energy Services

Dual Induction Log

15-161-20079-00-00

Company	CFA Oil Co.		Other Services CNL/CDL BHCS
Well	Downey Ranch, Inc. #2		
Field	Wildcat		Elevation K.B. 1016.98 D.F. G.L. 1006.98
County	Riley	State	
Location	330' FNL & 3852' FEL		
Sec:	29	Twp:	10S Rge: 9E
Permanent Datum	Ground Level	Elevation	1006.98
Log Measured From	Kelly Bushing	10 Ft. Above Perm. Datum	
Drilling Measured From	Kelly Bushing		

Date	8/18/2012
Run Number	One
Depth Driller	1620
Depth Logger	1619
Bottom Logged Interval	1618
Top Log Interval	150
Casing Driller	8.625 @ 179
Casing Logger	179
Bit Size	7.875
Type Fluid in Hole	Chemical
Salinity, ppm CL	1600
Density / Viscosity	9.2 45
pH / Fluid Loss	9.0 8.4
Source of Sample	Flowline
Rm @ Meas. Temp	1.15 @ 75
Rmf @ Meas. Temp	0.87 @ 75
Rmc @ Meas. Temp	1.55 @ 75
Source of Rmf / Rmc	Charts
Rm @ BHT	0.92 @ 94
Operating Rig Time	3 Hours
Max Rec. Temp. F	94
Equipment Number	91
Location	Hays
Recorded By	D. Schmidt
Witnessed By	Don Clark

<<< Fold Here >>>

All interpretations are opinions based on inferences from electrical or other measurements and we cannot and do not guarantee the accuracy or correctness of any interpretation, and we shall not, except in the case of gross or willful negligence on our part, be liable or responsible for any loss, costs, damages, or expenses incurred or sustained by anyone resulting from any interpretation made by any of our officers, agents or employees. These interpretations are also subject to our general terms and conditions set out in our current Price Schedule.

Comments

Thank you for using Pioneer Energy Services
www.pioneer.com
 785 625 3858
 I-70 & Hwy 177,
 North to Hwy 18, 6 East,
 South into

Database File: cfa_081812hd.db
 Dataset Pathname: dil/cfastack
 Presentation Format: dil2in
 Dataset Creation: Sat Aug 18 14:22:29 2012
 Charted by: Depth in Feet scaled 1:600

0 Gamma Ray 150
-200 SP (mV) 0

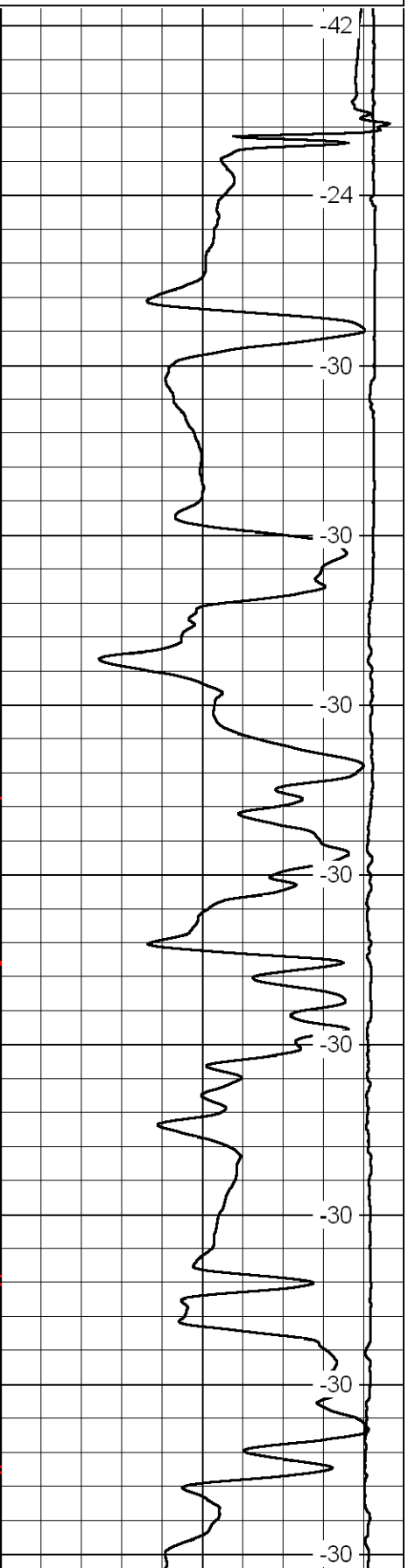
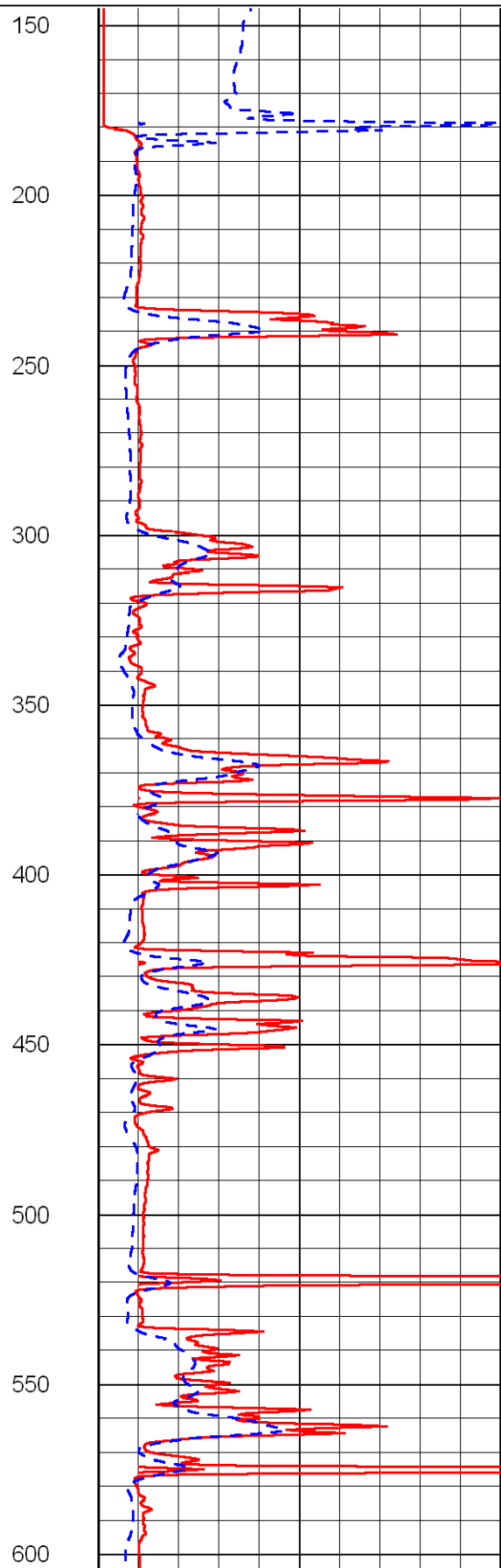
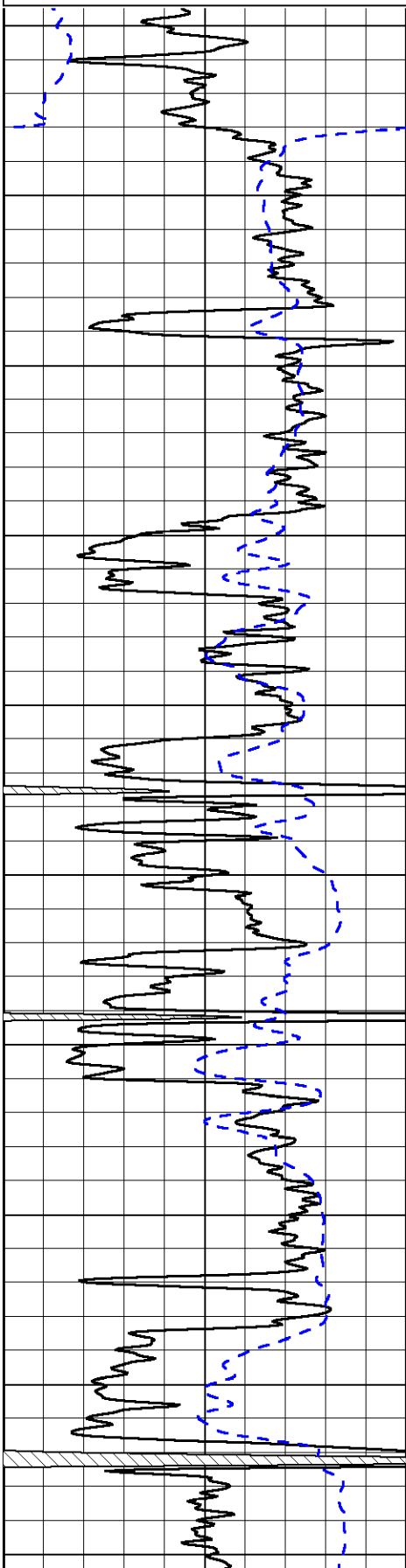
0 Shallow Resistivity (Ohm-m) 50
0 Deep Resistivity (Ohm-m) 50

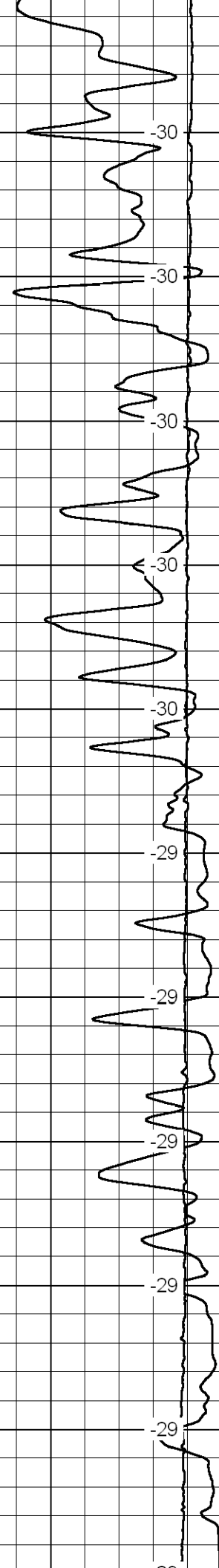
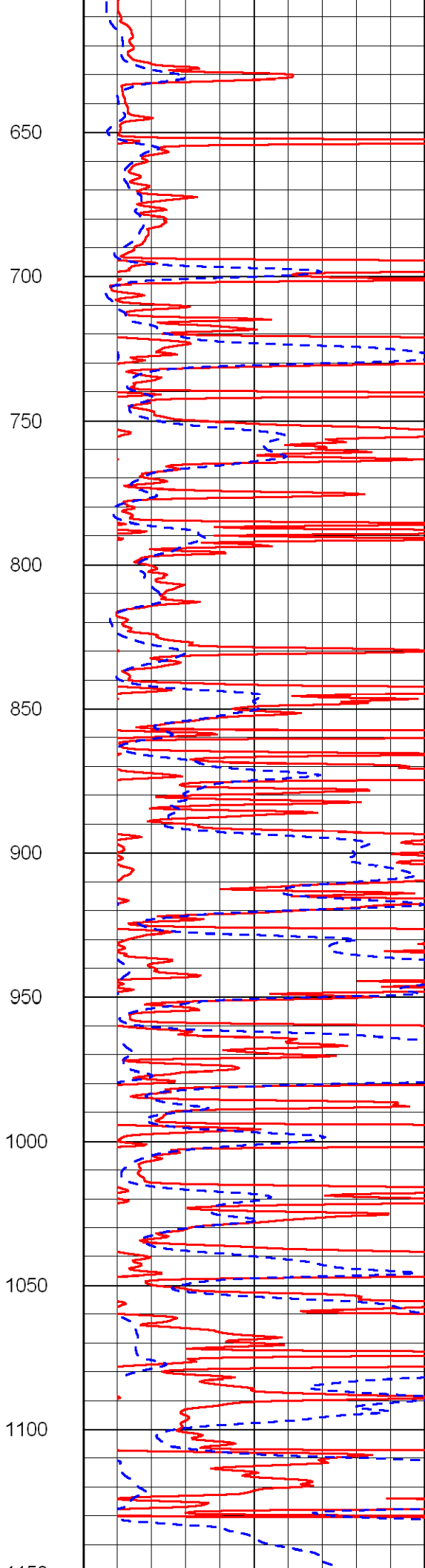
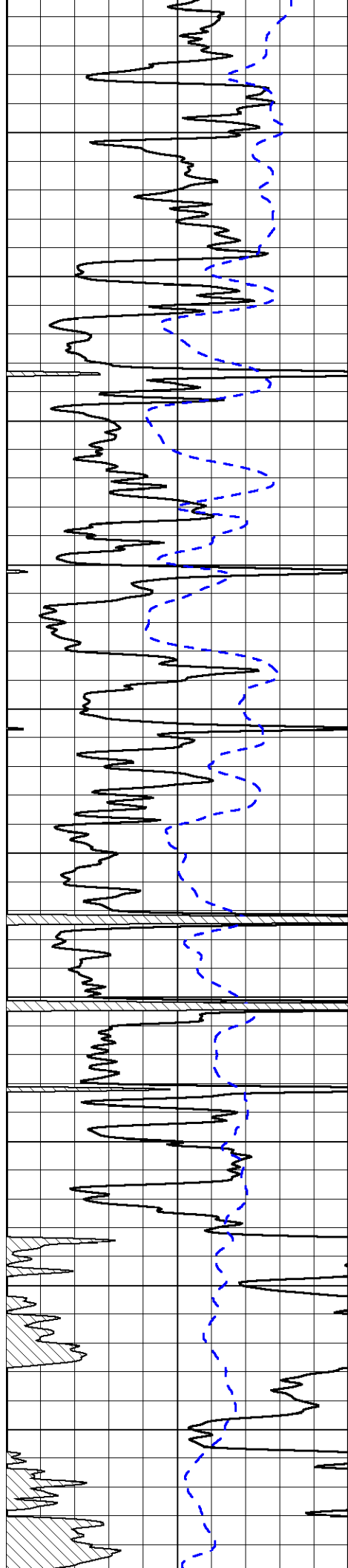
LSPD
(ft/min)

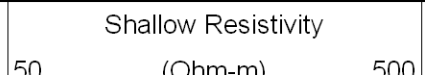
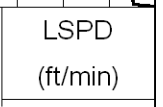
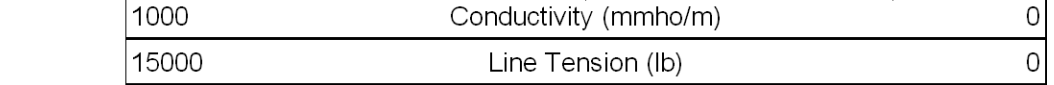
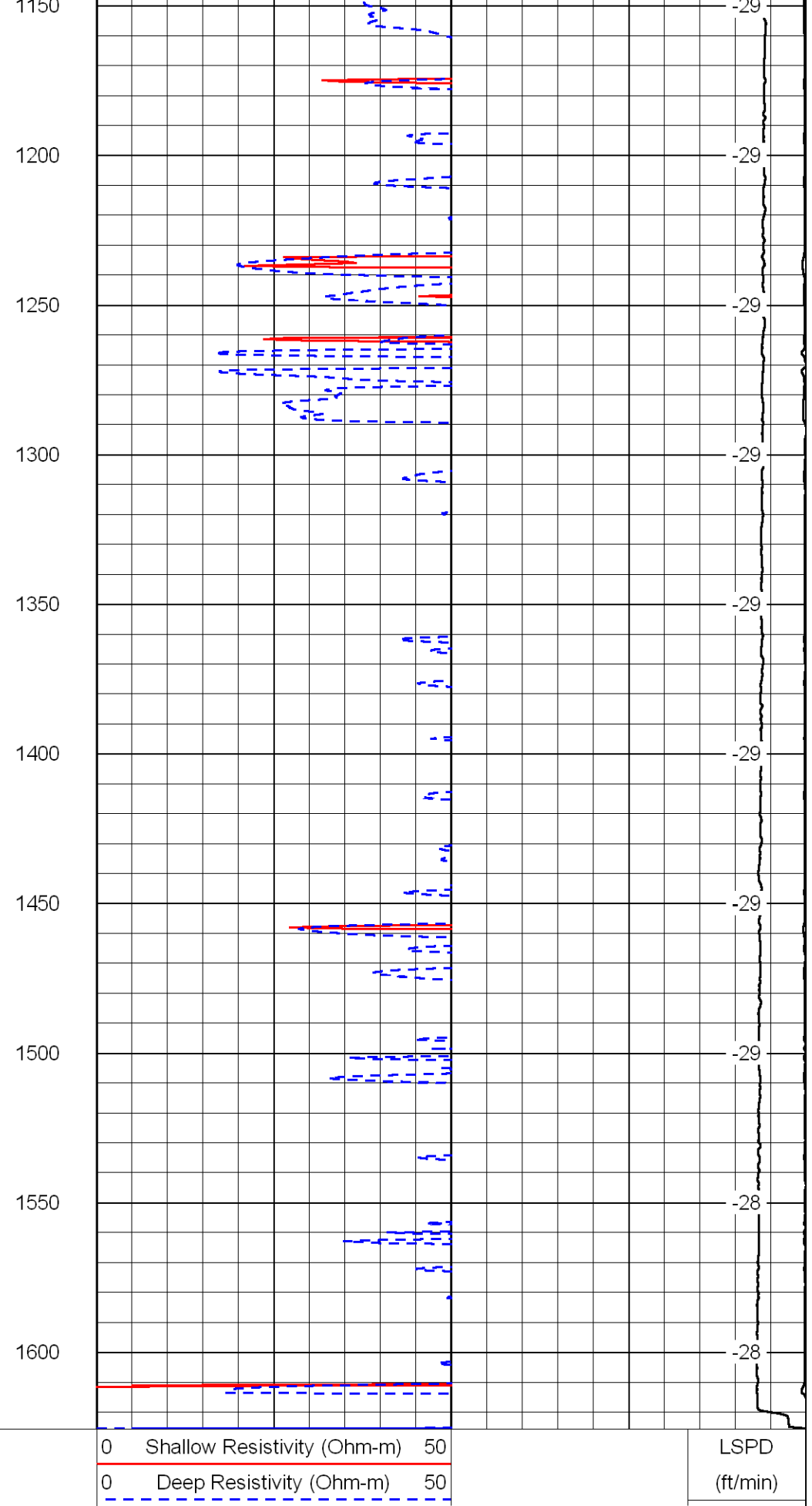
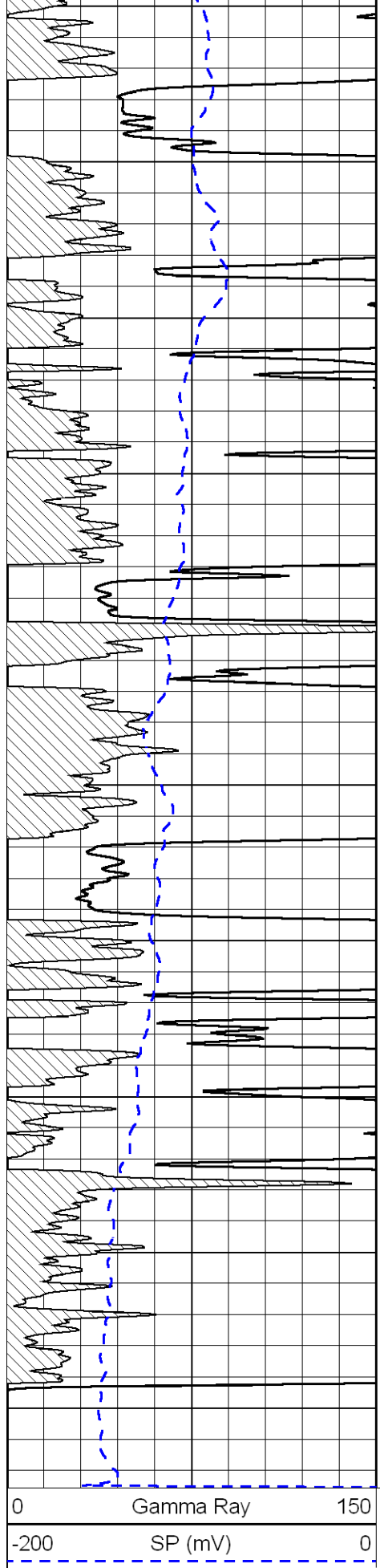
1000 Conductivity (mmho/m) 0

15000 Line Tension (lb) 0

Shallow Resistivity
50 (Ohm-m) 500
50 Deep Resistivity (Ohm-m) 500







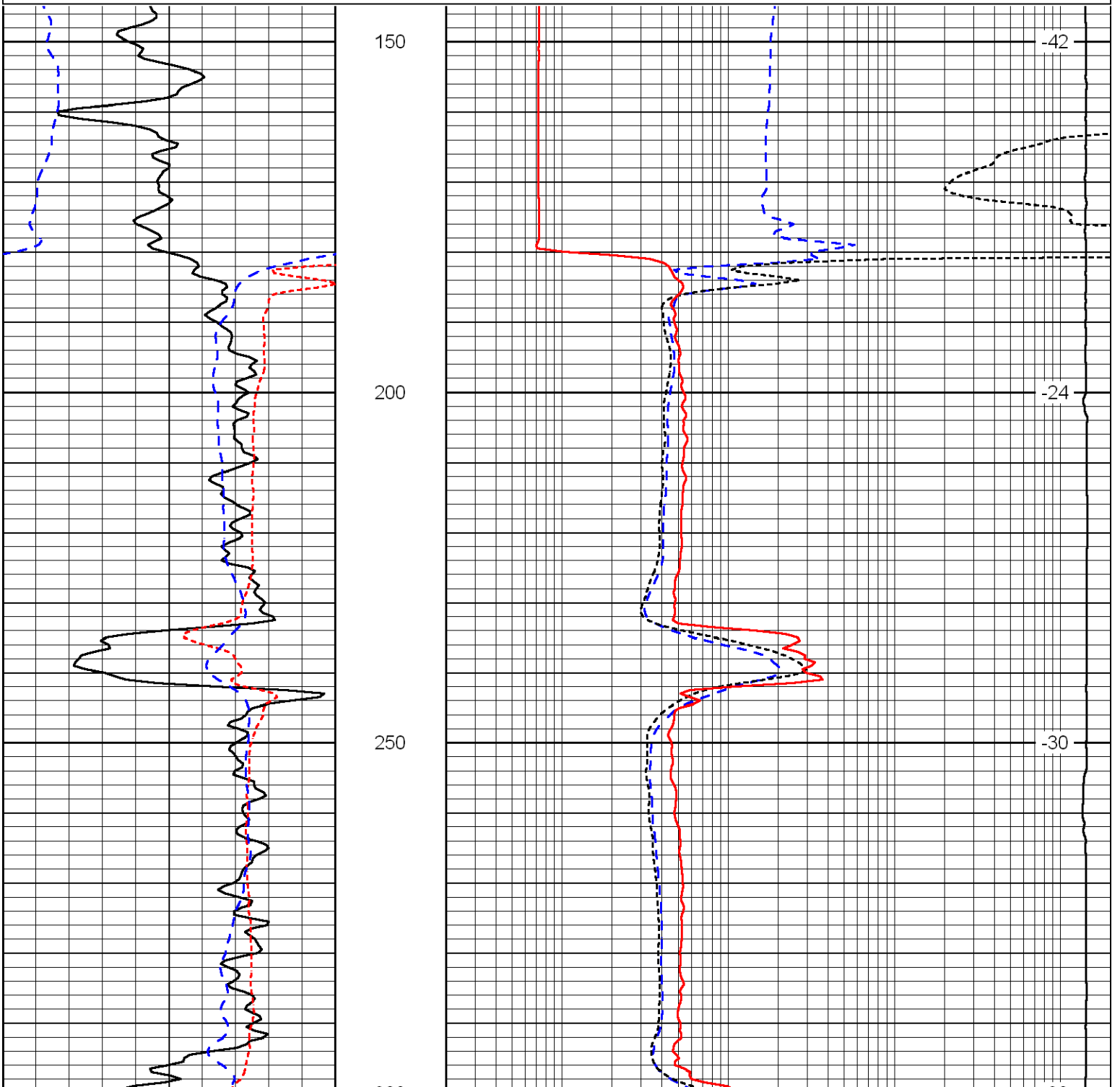
50 Deep Resistivity (Ohm-m) 500

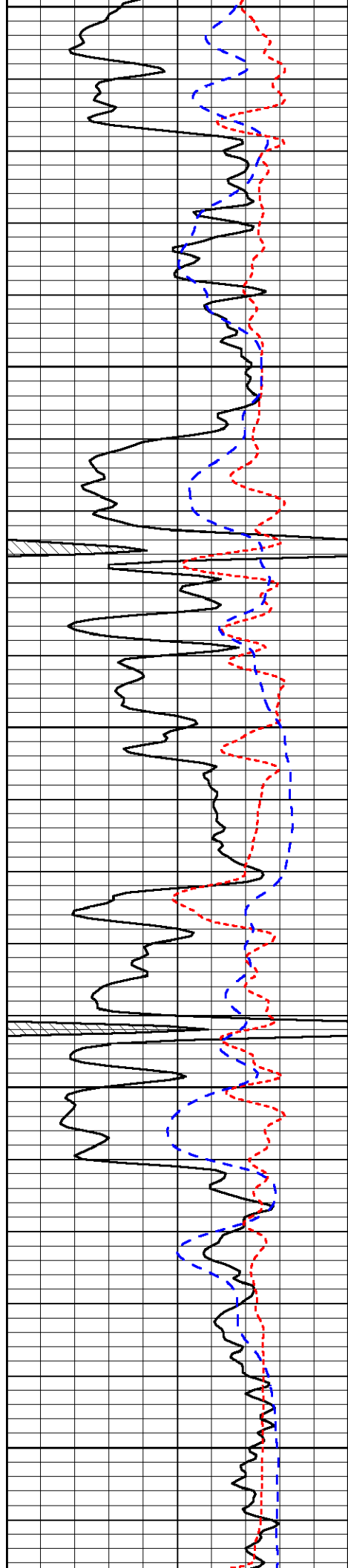
Database File: cfa_081812hd.db
 Dataset Pathname: dil/cfastack
 Presentation Format: dil
 Dataset Creation: Sat Aug 18 14:22:29 2012
 Charted by: Depth in Feet scaled 1:240

0	Gamma Ray	150
-160	RXO/RT	40
-200	SP (mV)	0

0.2	Deep Resistivity (Ohm-m)	2000
0.2	Medium Resistivity (Ohm-m)	2000
0.2	Shallow Resistivity (Ohm-m)	2000
15000	Line Tension (lb)	0

LSPD
(ft/min)





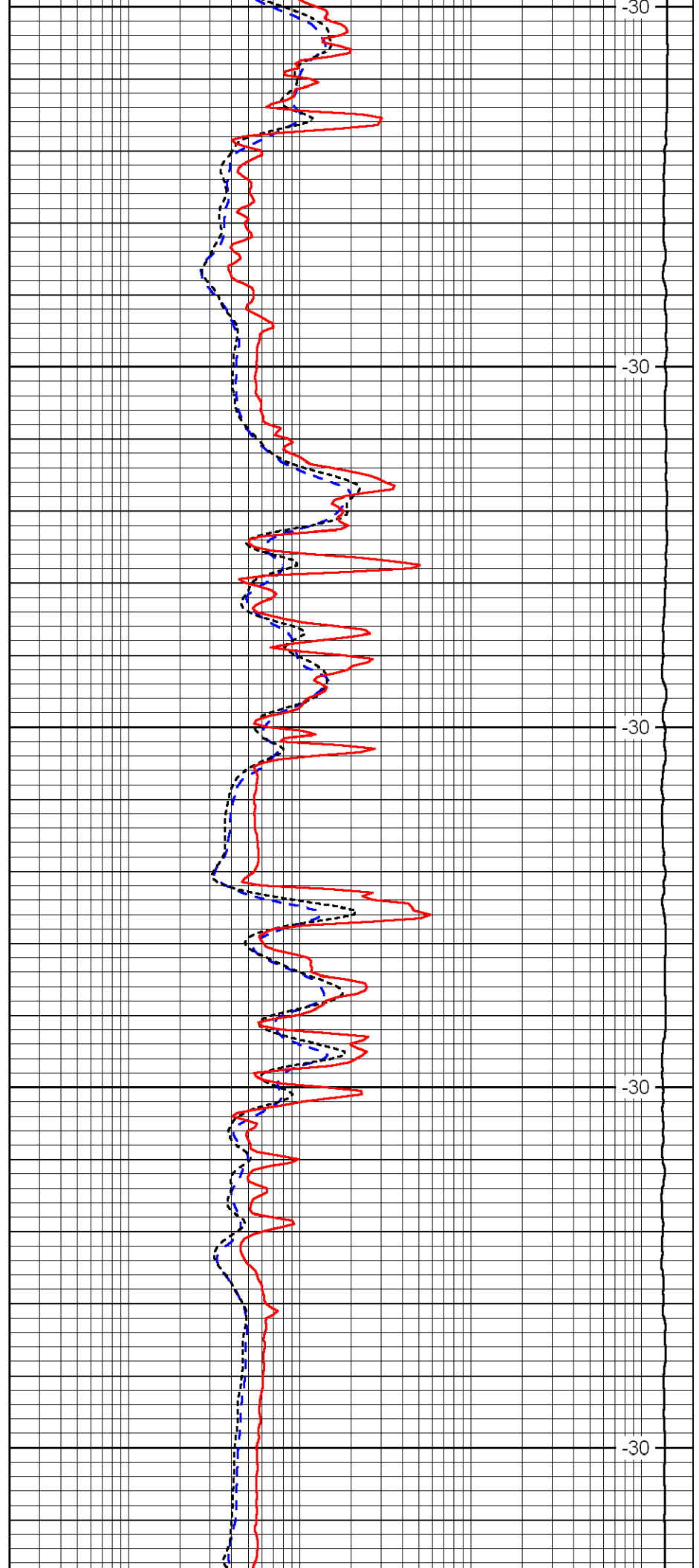
300

350

400

450

500



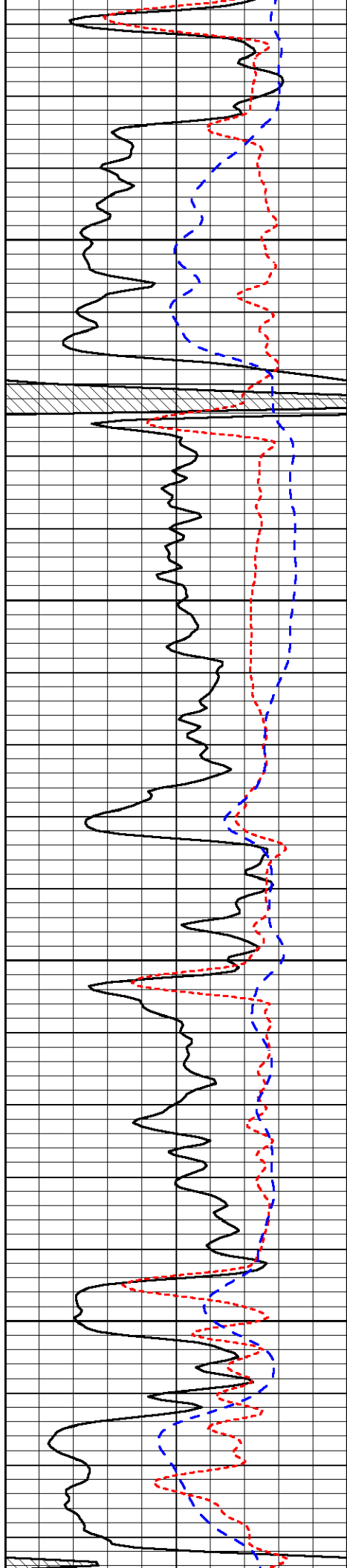
-30

-30

-30

-30

-30

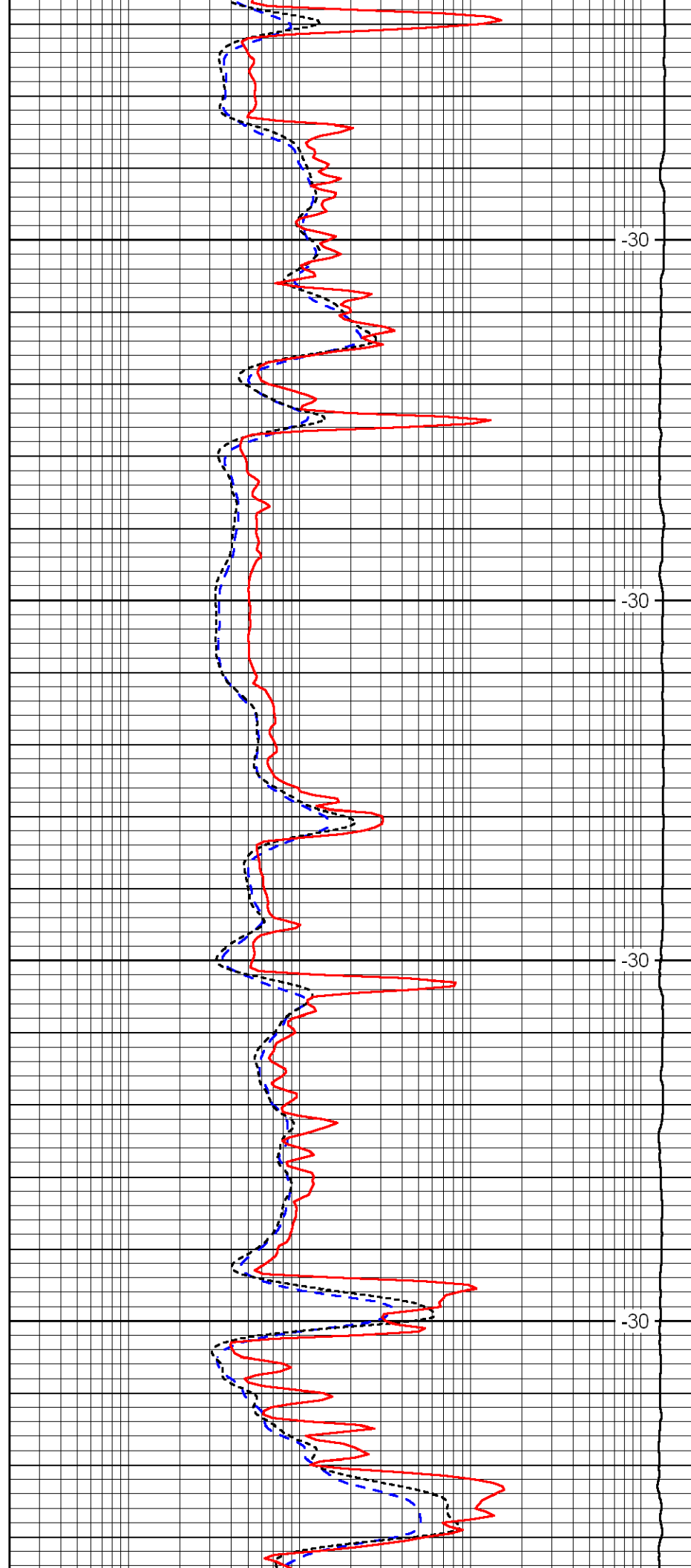


550

600

650

700

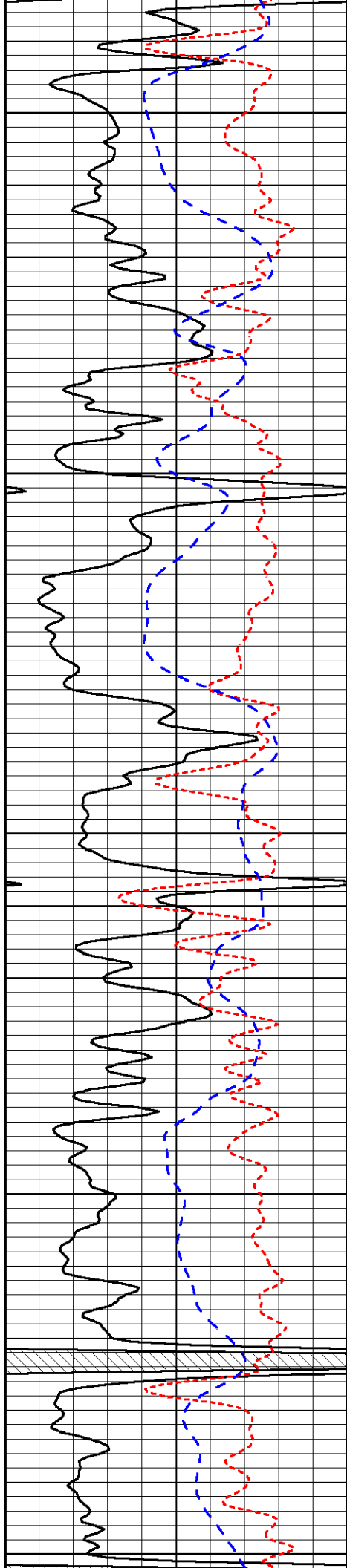


-30

-30

-30

-30



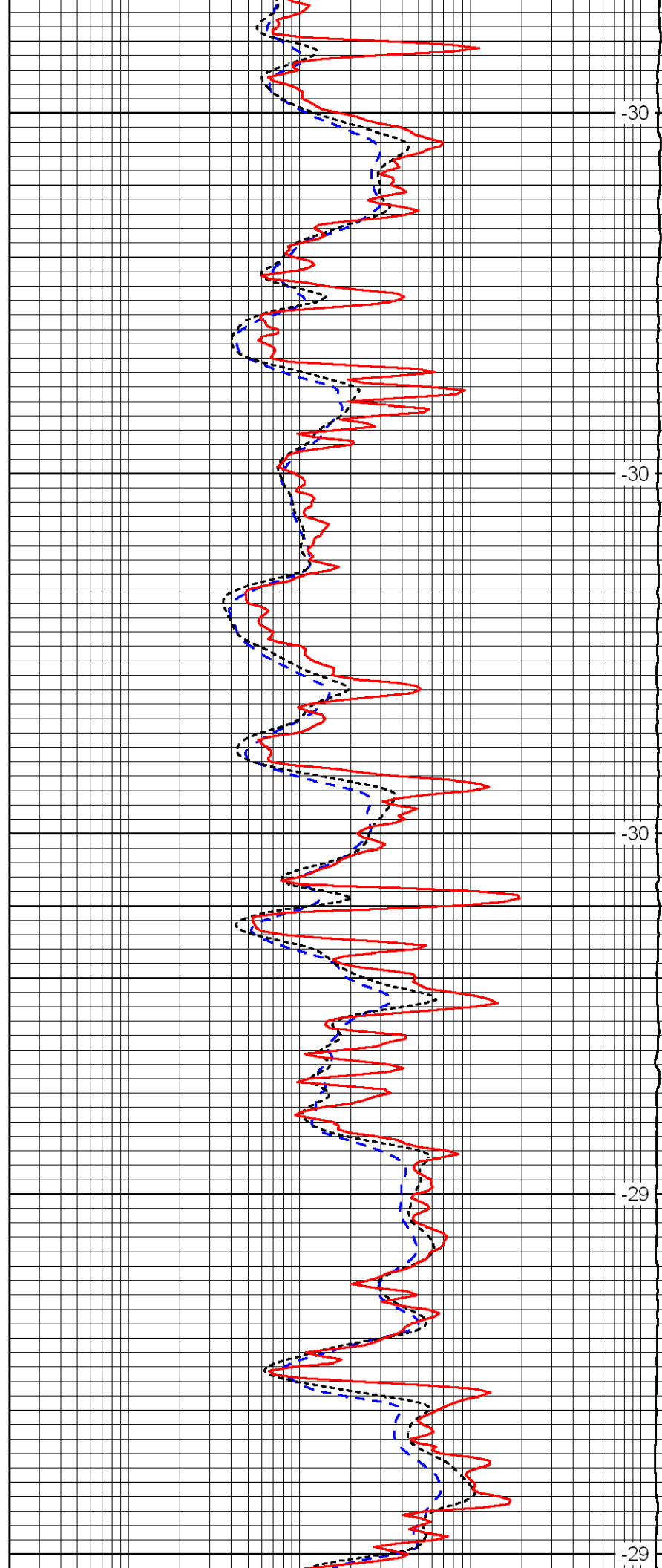
750

800

850

900

950



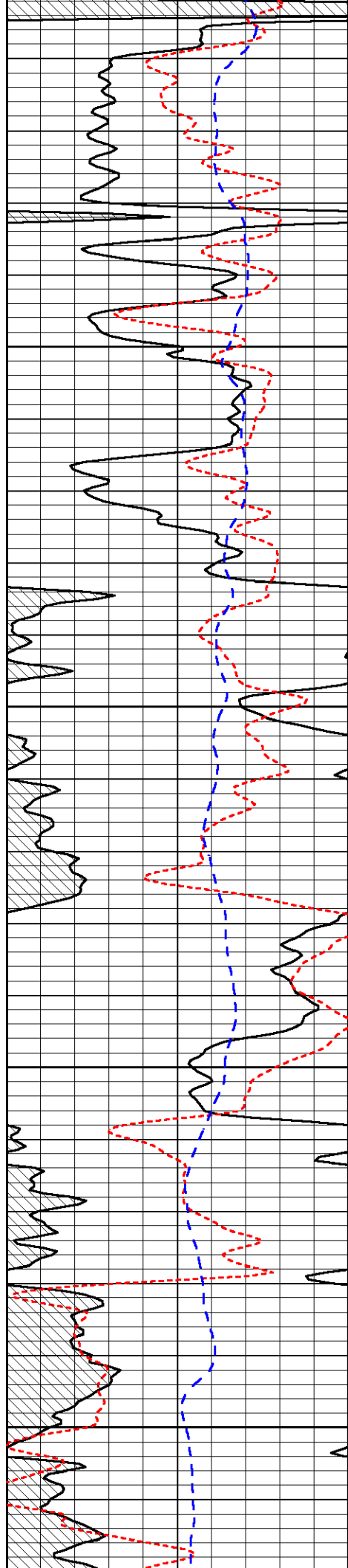
-30

-30

-30

-29

-29

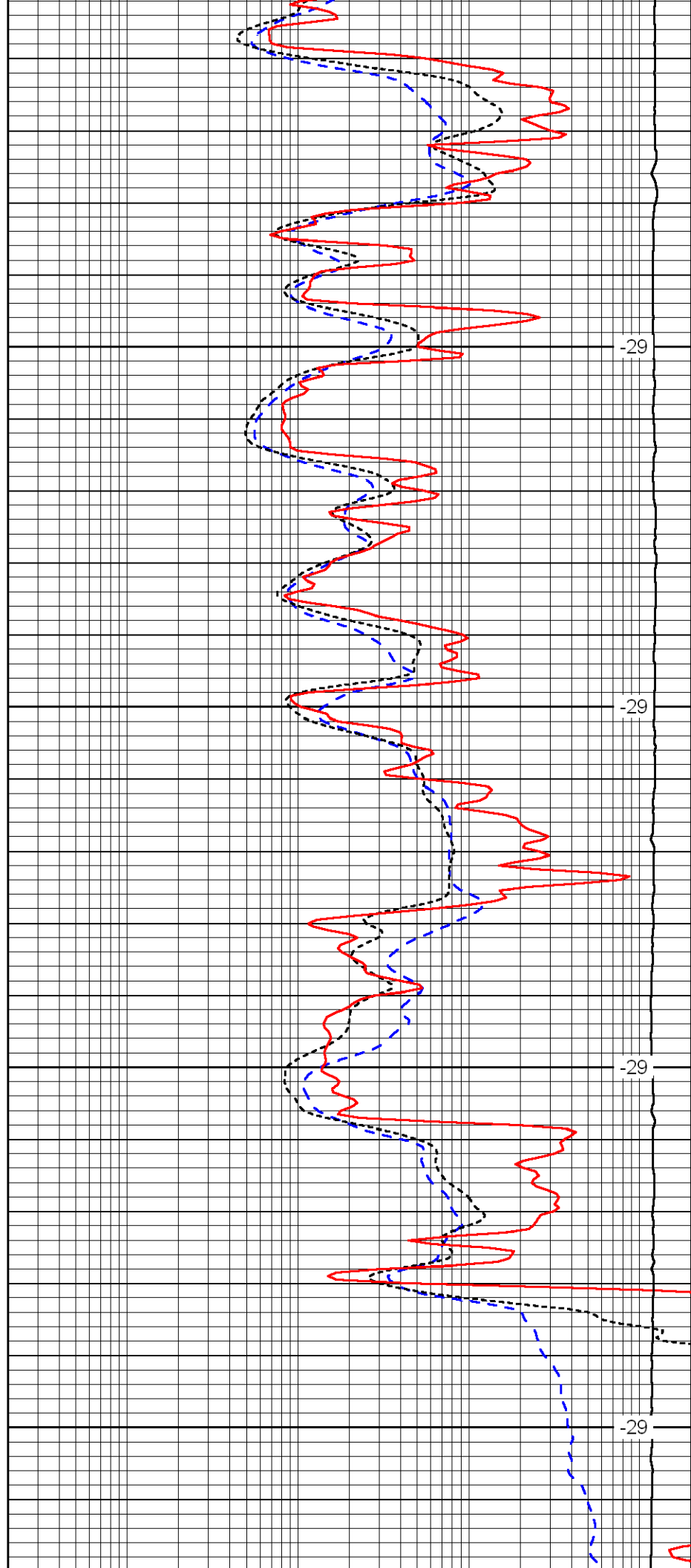


1000

1050

1100

1150

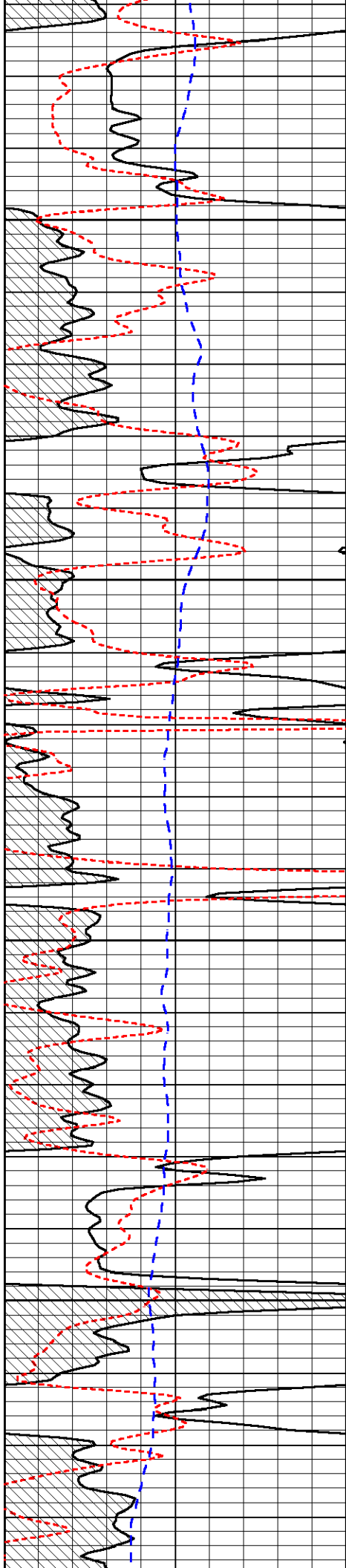


-29

-29

-29

-29

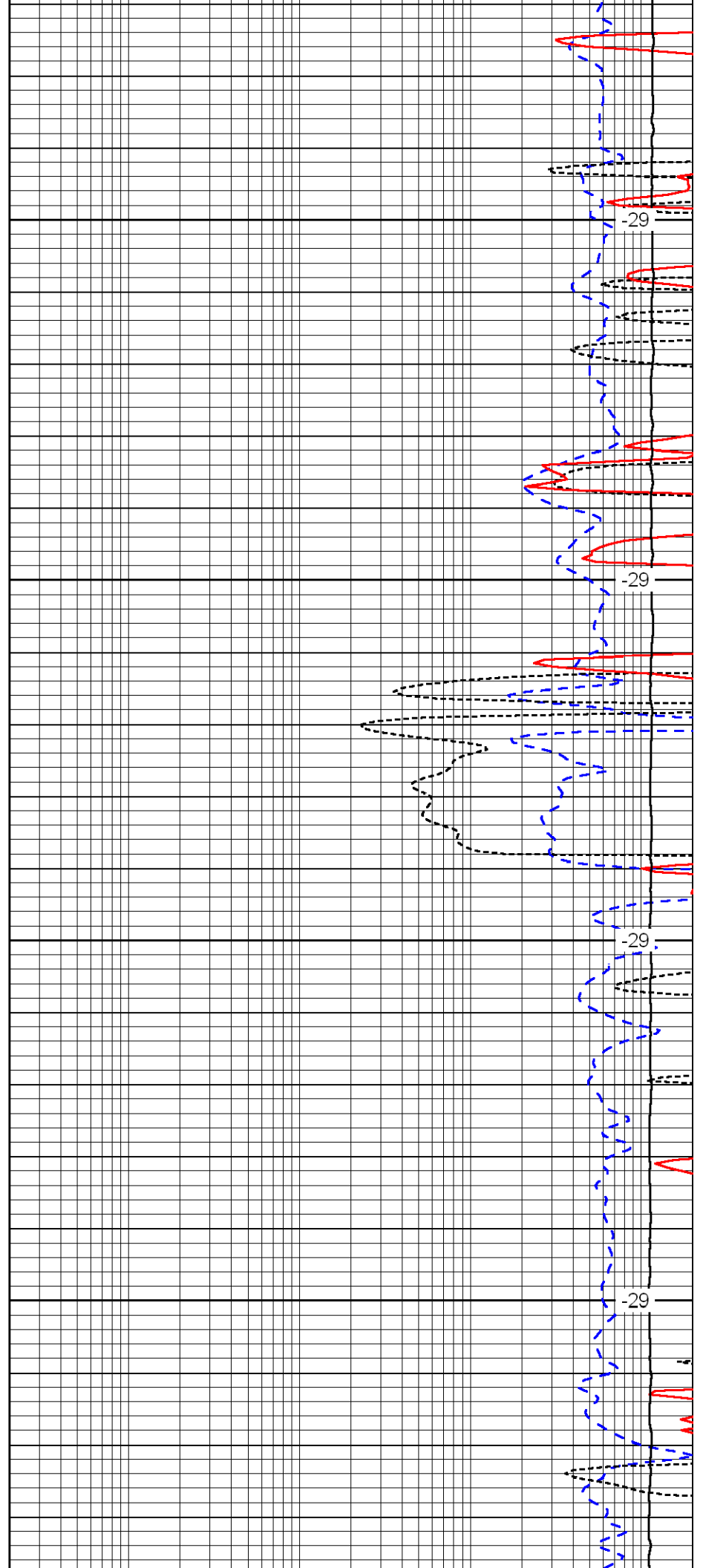


1200

1250

1300

1350

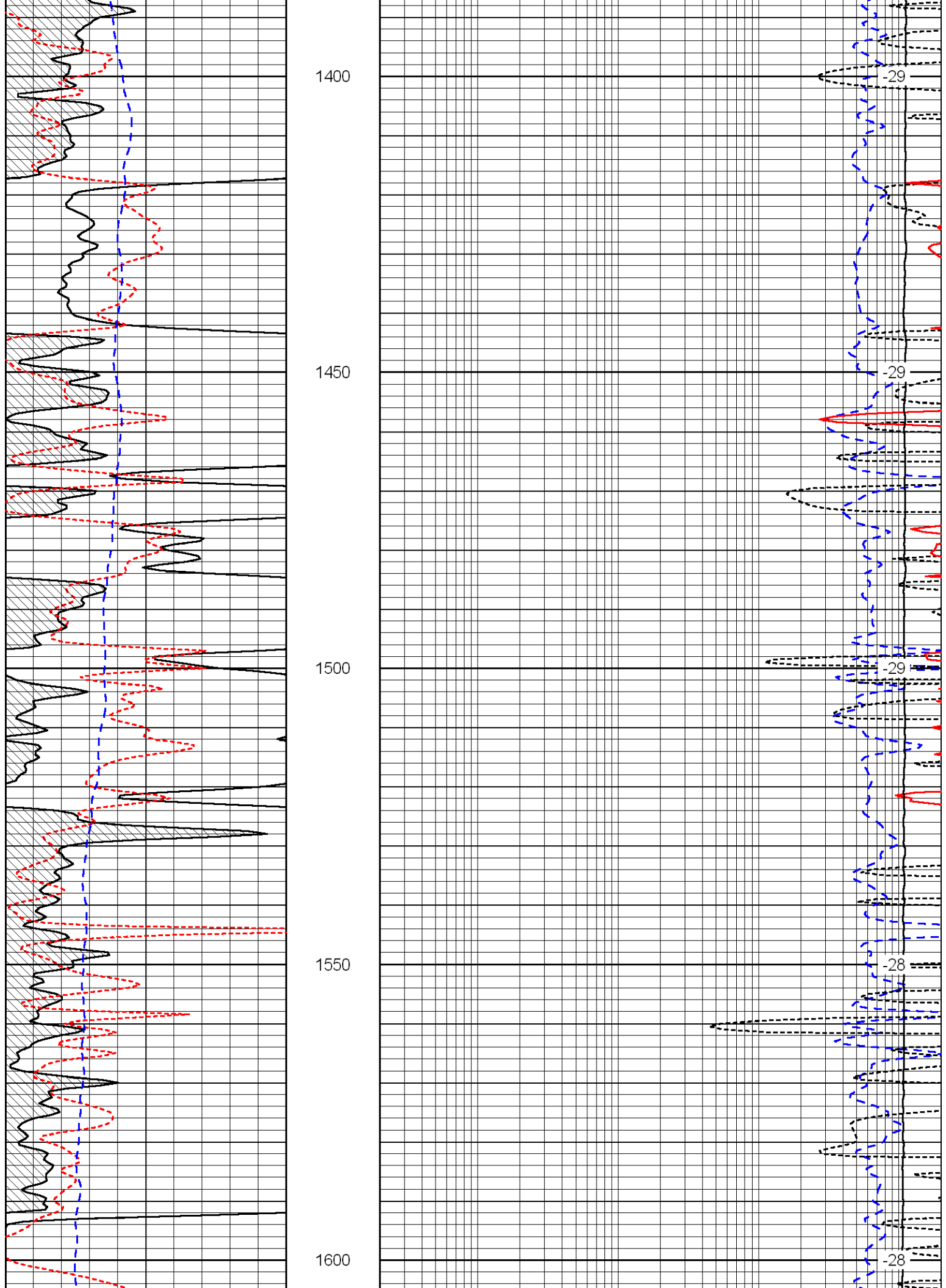


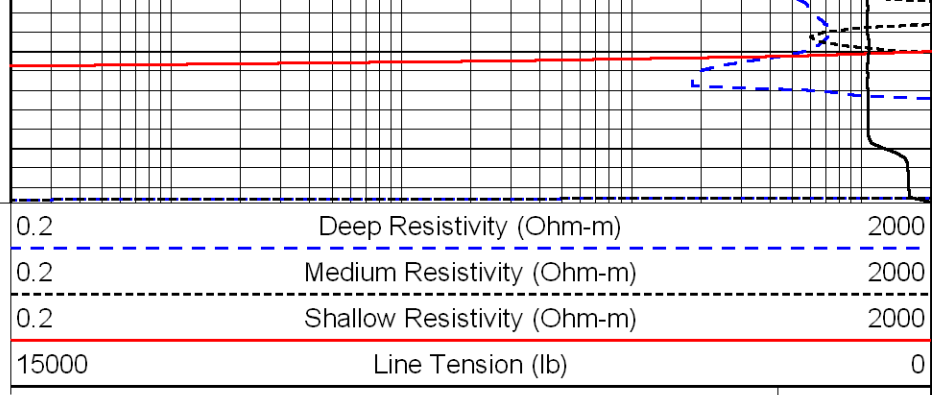
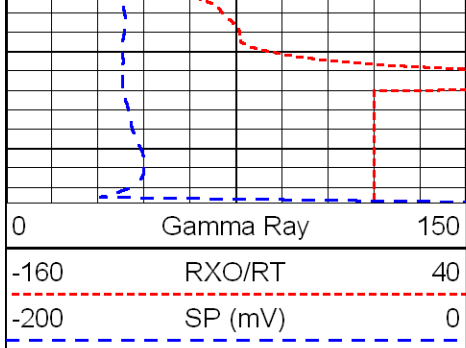
-29

-29

-29

-29





LSPD
(ft/min)