



**SUPERIOR
Hays,
Kansas**

**COMPENSATED
DENSITY / NEUTRON
LOG**

Company **BEREXCO, LLC.**
Well **EVEL-HAGANS UNIT #1**
Field
County **NESS** State **KANSAS**

Company **BEREXCO, LLC.**
Well **EVEL-HAGANS UNIT #1**
Field
County **NESS**
State **KANSAS**

Location: **API # : 15-135-25425**
2560' FNL & 1350' FEL
SEC 15 TWP 16S RGE 26W
Permanent Datum **GROUND LEVEL** Elevation **2573**
Log Measured From **KELLY BUSHING 10' A.G.L.**
Drilling Measured From **KELLY BUSHING**
Other Services
**DIL
MICRO**
Elevation
K.B. 2583
D.F.
G.L. 2573

Date	6-28-12
Run Number	ONE
Depth Driller	4573
Depth Logger	4574
Bottom Logged Interval	4550
Top Log Interval	3600
Casing Driller	309
Casing Logger	309
Bit Size	7.875
Type Fluid in Hole	CHEMICAL MUD
Density / Viscosity	9.15 / 60
pH / Fluid Loss	8.0 / 14.4
Source of Sample	FLOWLINE
Rim @ Meas. Temp	0.90 @ 90F
Rmf @ Meas. Temp	0.68 @ 90F
Rmc @ Meas. Temp	1.08 @ 90F
Source of Rmf / Rmc	MEASURED
Rim @ BHT	.670 @ 121F
Time Circulation Stopped	3 HOURS
Time Logger on Bottom	1:15 A.M.
Maximum Recorded Temperature	121F
Equipment Number	860
Location	HAYS, KS.
Recorded By	RUPP
Witnessed By	RYAN SEIB

<<< Fold Here >>>

All interpretations are opinions based on inferences from electrical or other measurements and we cannot and do not guarantee the accuracy or correctness of any interpretation, and we shall not, except in the case of gross or willful negligence on our part, be liable or responsible for any loss, costs, damages, or expenses incurred or sustained by anyone resulting from any interpretation made by any of our officers, agents or employees. These interpretations are also subject to our general terms and conditions set out in our current Price Schedule.

Comments

SUPERIOR WELL SERVICES
785-628-6395
THANK YOU FOR YOUR BUSINESS
DIRECTIONS: UTICA, W TO RD. D, 1 1/2N, W INTO.

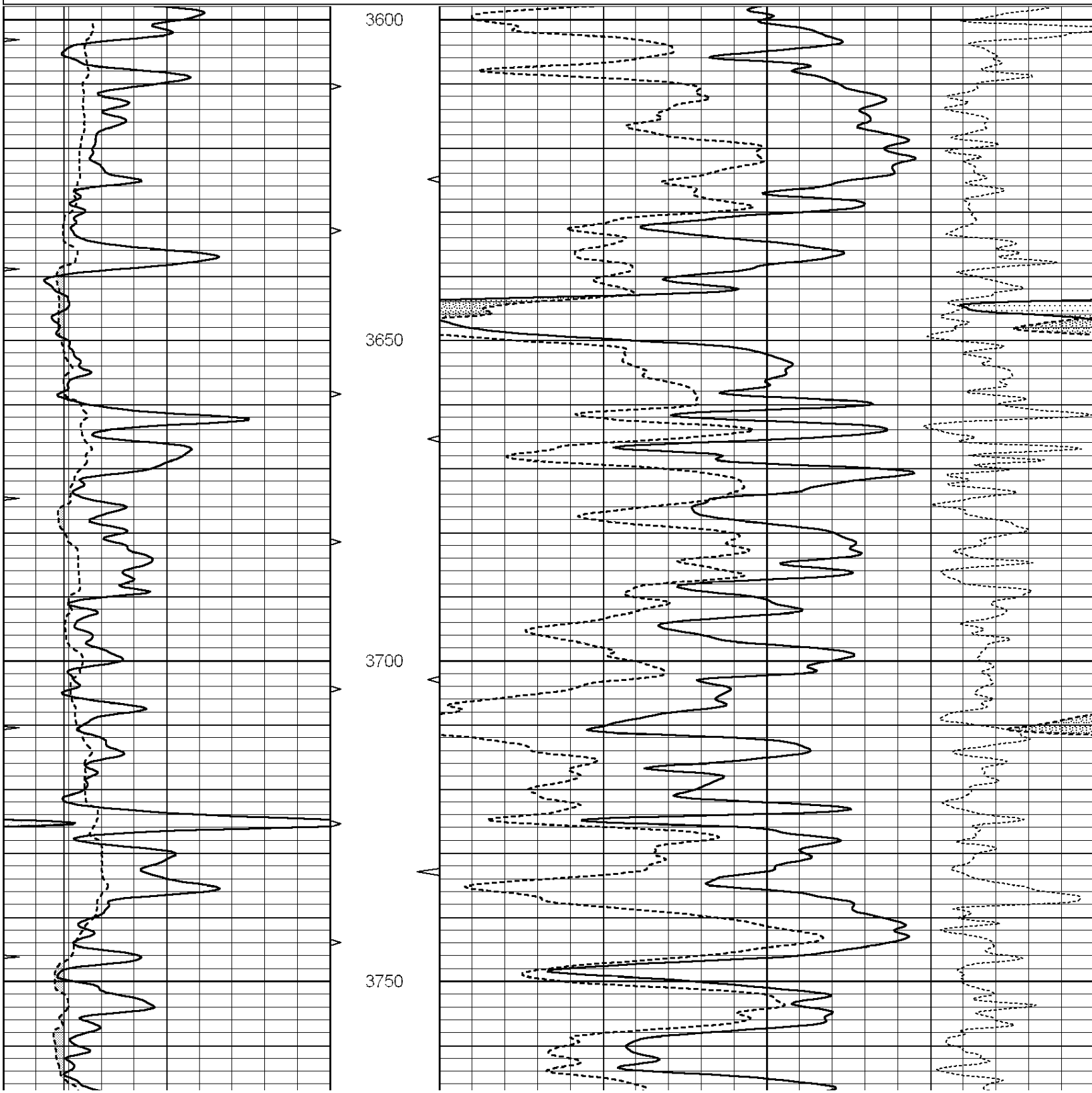


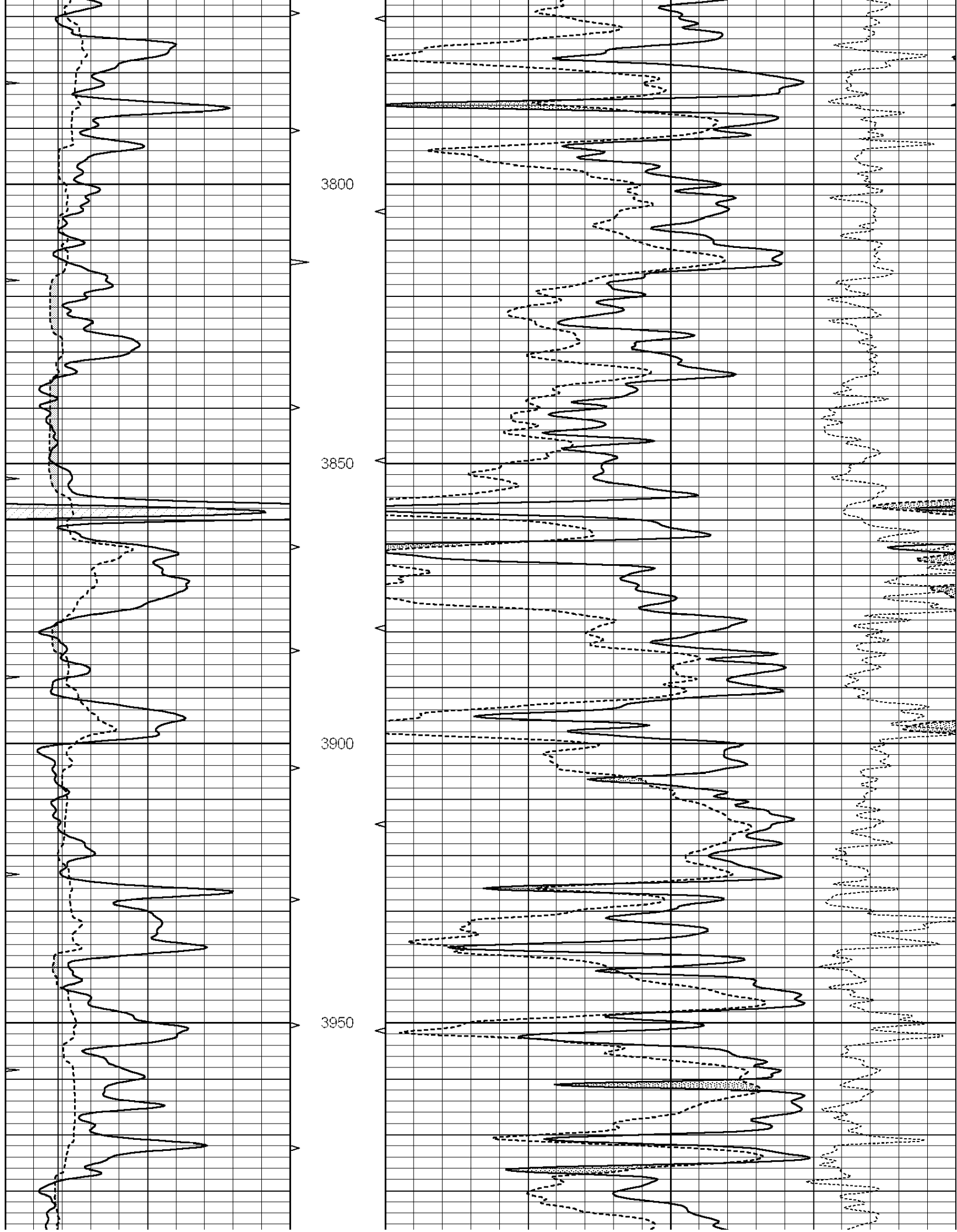
**SUPERIOR
Hays,
Kansas**

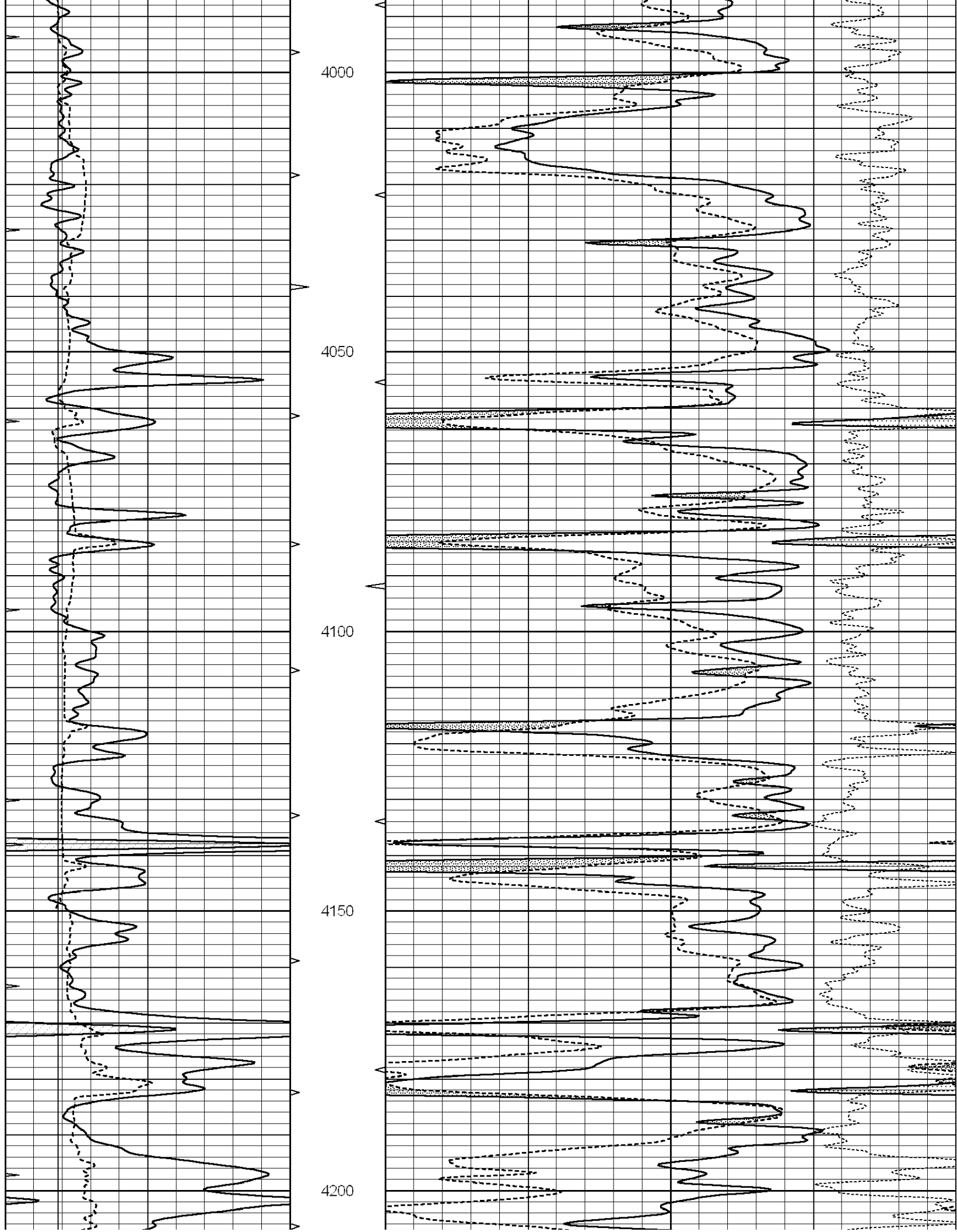
MAIN SECTION

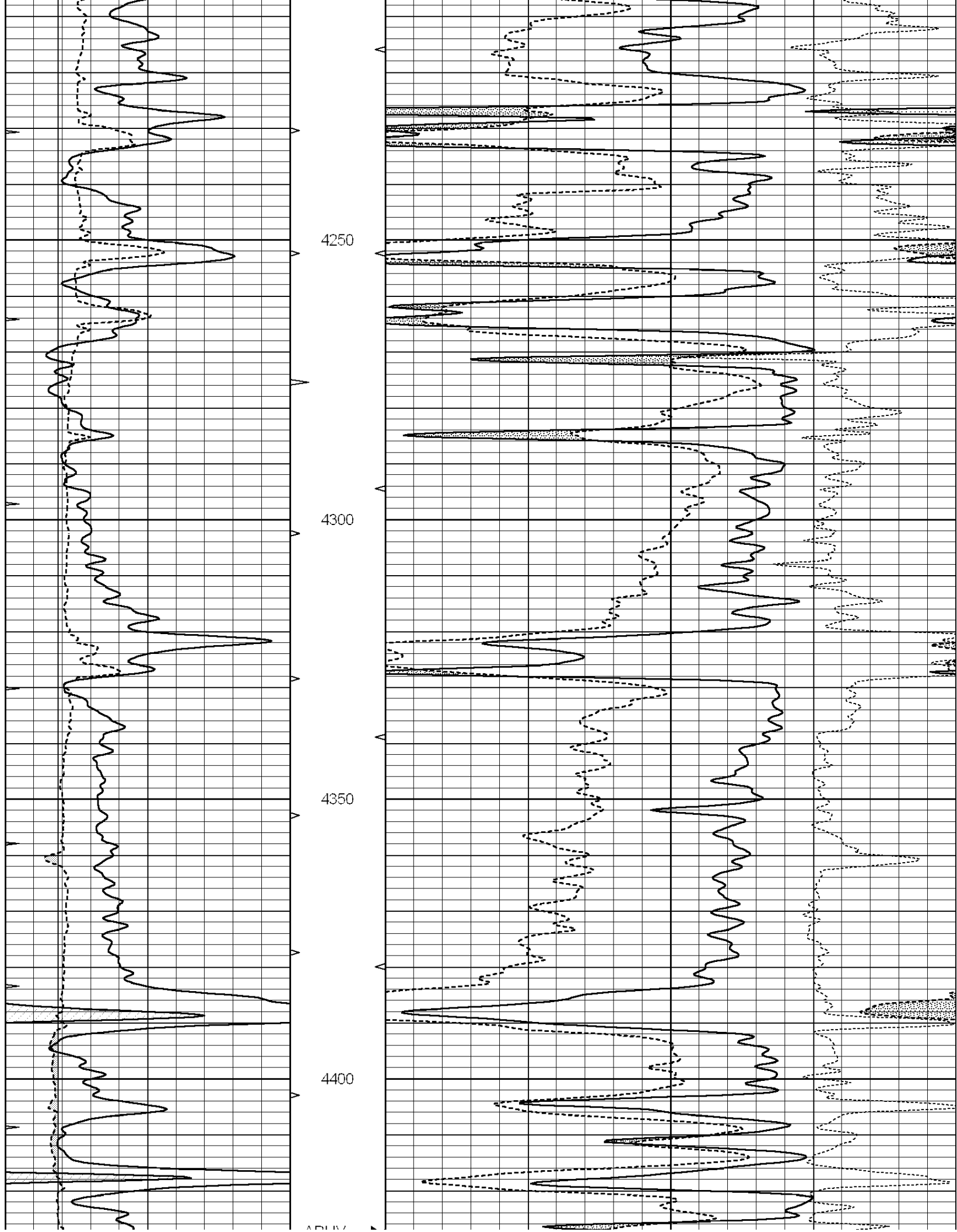
Database File: 008796ddn.db
 Dataset Pathname: pass7.2
 Presentation Format: den_neu
 Dataset Creation: Thu Jun 28 04:42:05 2012
 Charted by: Depth in Feet scaled 1:240

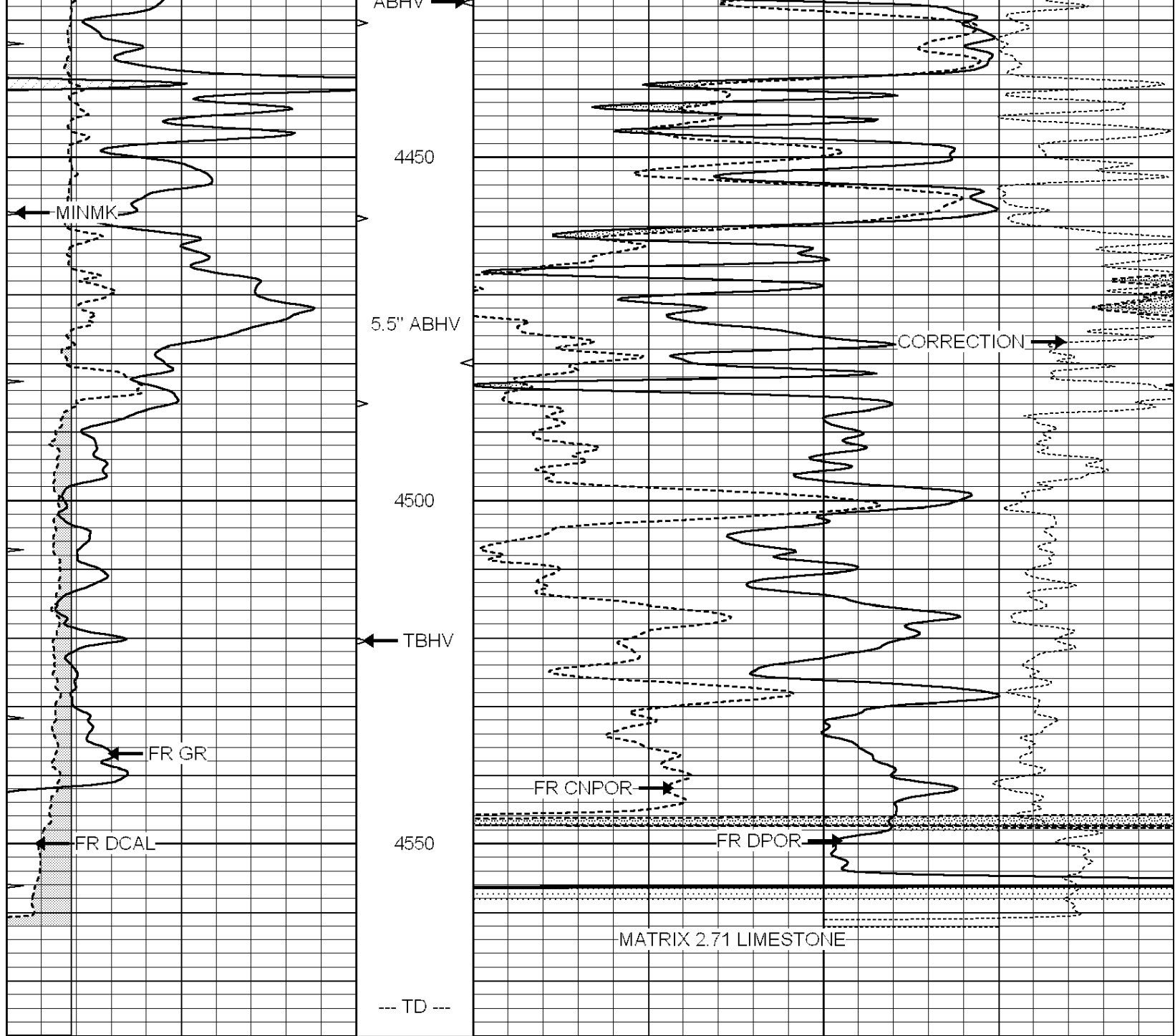
0	GAMMA RAY (GAPI)	150	ABHV	30	COMPENSATED DENSITY (pu)	-10
6	CALIPER (in)	16	10 (ft3)	0	COMPENSATED NEUTRON (pu)	-10
0	MINMK	20	TBHV		-0.25 CORRECTION (g/cc)	0.25
6	MELCAL (in)	16	0 (ft3)	10		











0	GAMMA RAY (GAPI)	150	ABHV	30	COMPENSATED DENSITY (pu)	-10
6	CALIPER (in)	16	10 (ft3)	0 30	COMPENSATED NEUTRON (pu)	-10
0	MINMK	20	TBHV		-0.25	CORRECTION (g/cc)
6	MELCAL (in)	16	0 (ft3)	10		0.25

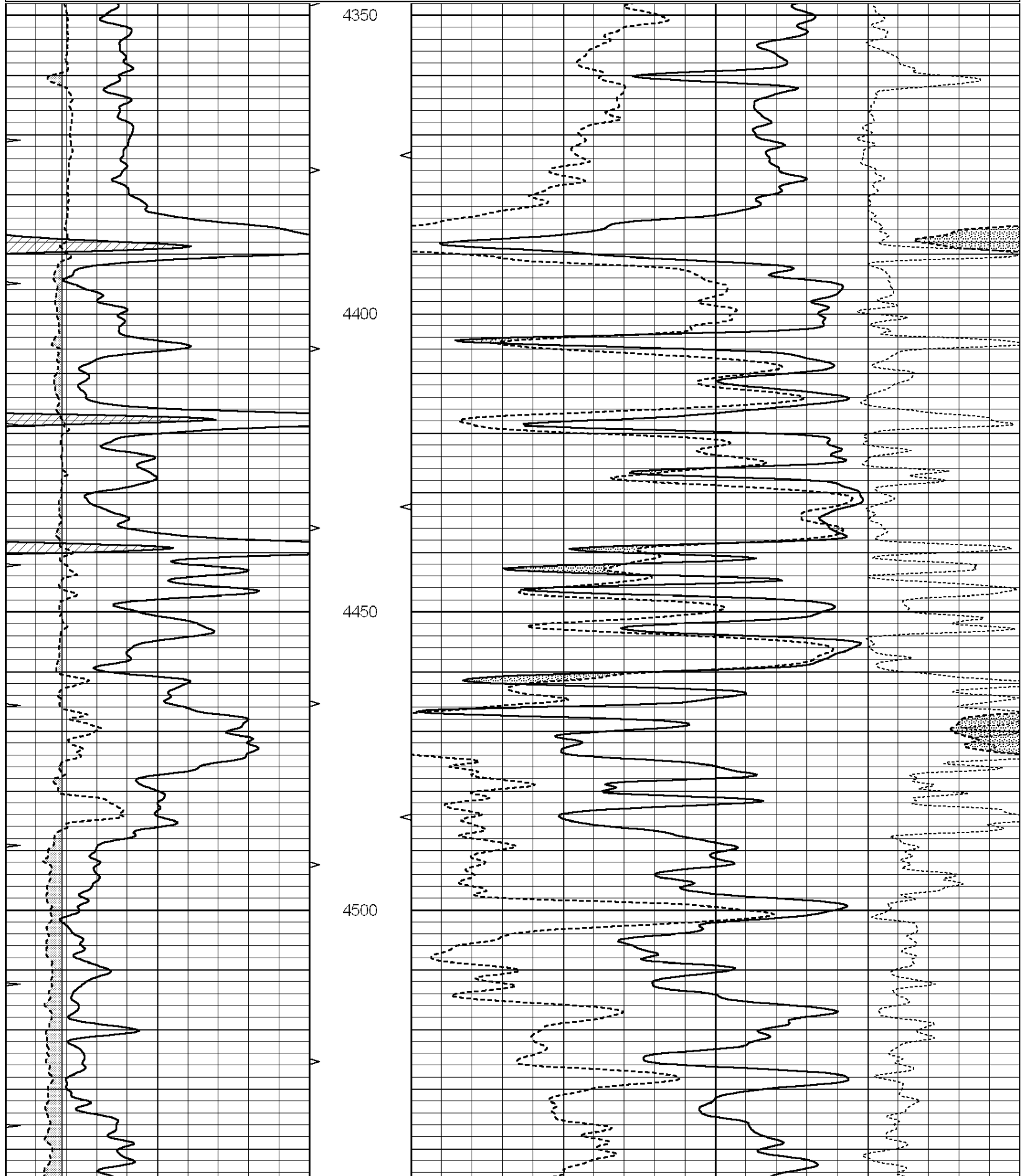


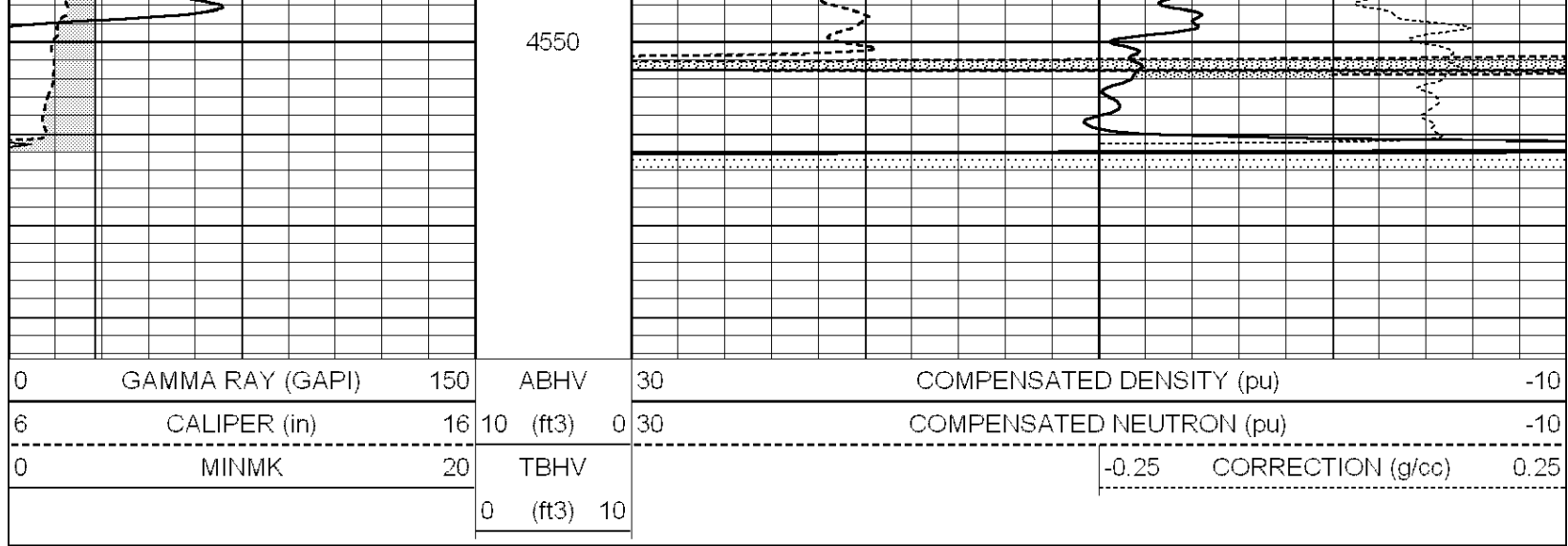
SUPERIOR
Hays,
Kansas

REPEAT SECTION

Database File: 008796ddn.db
 Dataset Pathname: pass6.1
 Presentation Format: den_neu
 Dataset Creation: Thu Jun 28 01:52:12 2012 by Calc Open-Cased 090629
 Charted by: Depth in Feet scaled 1:240

0	GAMMA RAY (GAPI)	150	ABHV	30	COMPENSATED DENSITY (pu)	-10
6	CALIPER (in)	16	10 (ft3) 0	30	COMPENSATED NEUTRON (pu)	-10
0	MINMK	20	TBHV		-0.25 CORRECTION (g/cc)	0.25
			0 (ft3) 10			





Calibration Report

Database File: 008796ddn.db
 Dataset Pathname: pass7.2
 Dataset Creation: Thu Jun 28 04:42:05 2012

Dual Induction Calibration Report

Serial-Model: DIL5-GEAR
 Performed: Thu Jun 28 01:46:43 2012

Loop:	Readings			References			Results	
	Air	Loop	V	Air	Loop	mmho/m	m	b
Deep	0.004	0.654	V	0.000	400.000	mmho/m	500.000	-17.000
Medium	-0.005	0.737	V	0.000	462.500	mmho/m	530.000	-13.000
Internal:	Zero	Cal		Zero	Cal		m	b
Deep	0.006	0.655	V	0.000	400.000	mmho/m	615.668	-3.483
Medium	0.010	0.747	V	0.000	462.500	mmho/m	627.607	-6.064

Compensated Density Calibration Report

Serial-Model: GEAR1-GEARHART
 Source / Verifier: 147 / 147
 Master Calibration Performed: Thu Jun 28 02:21:27 2012

Master Calibration

	Density		Far Detector	Near Detector	
Magnesium	1.710	g/cc	1243.76	629.14	cps
Aluminum	2.600	g/cc	282.16	435.01	cps
Spine Angle = 76.03			Density/Spine Ratio = 0.582		
	Size		Reading		
Small Ring	7.70	in	4.01	V	
Large Ring	14.00	in	5.67	V	

Compensated Neutron Calibration Report

Serial Number: NUE_2I
 Tool Model: G

CALIBRATION

Detector	Readings		Target		Normalization
Short Space	1.00	cps	1.00	cps	1.0000
Long Space	1.00	cps	1.00	cps	1.0000

Gamma Ray Calibration Report

Serial Number:	GR5	
Tool Model:	OPEN	
Performed:	Wed Jun 27 23:28:08 2012	
Calibrator Value:	1.0	GAPI
Background Reading:	0.0	cps
Calibrator Reading:	1.0	cps
Sensitivity:	0.7500	GAPI/cps