



DIGITAL LOG (785) 625-3858

Dual Induction Log

15-203-20,181-00-00

API No.

Company Raymond Oil Company, Inc.

Well Horton-Smith No. 1

Field Wildcat

County Wichita State

Kansas

Location

S2 N2 N2 N2
335' FNL & 2,640' FEL

Sec: 19 Twp: 20S Rge: 35W

Permanent Datum Ground Level Elevation 3188
Log Measured From Kelly Bushing 11 Ft. Above Perm. Datum
Drilling Measured From Kelly Bushing

Other Services
CNL/CDL
MEL

Elevation
K.B. 3199
D.F.
G.L. 3188

Date 6/3/2012

Run Number One

Depth Driller 5141

Depth Logger 5145

Bottom Logged Interval 5144

Top Log Interval 250

Casing Driller 8.625 @ 279

Casing Logger 276

Bit Size 7.875

Type Fluid in Hole Chemical

Salinity,ppm CL 8000

Density / Viscosity 9.4 68

pH / Fluid Loss 9.0 9.6

Source of Sample Flowline

Rm @ Meas. Temp .54 @ 72

Rmf @ Meas. Temp .41 @ 72

Rmc @ Meas. Temp .73 @ 72

Source of Rmf / Rmc Charts

Rm @ BHT .31 @ 127

Operating Rig Time 4 Hours

Max Rec. Temp. F 127

Equipment Number 108

Location Hays

Recorded By J. Long

Witnessed By Max Lovely

<<< Fold Here >>>

All interpretations are opinions based on inferences from electrical or other measurements and we cannot and do not guarantee the accuracy or correctness of any interpretation, and we shall not, except in the case of gross or willful negligence on our part, be liable or responsible for any loss, costs, damages, or expenses incurred or sustained by anyone resulting from any interpretation made by any of our officers, agents or employees. These interpretations are also subject to our general terms and conditions set out in our current Price Schedule.

Comments

Thank you for using Log-Tech, Inc.
(785) 625-3858

Marienthal, 1/2 West to County Road 20, 11 South to T, 2 West, 2 South, 1 1/2 East, North Into

Database File: c:\warrior\data\raymond_horton-smith no. 1\raymondoil_horton-smith_1hd.db
Dataset Pathname: dil/raystck
Presentation Format: dil2in
Dataset Creation: Sun Jun 03 13:12:38 2012
Charted by: Depth in Feet scaled 1:600

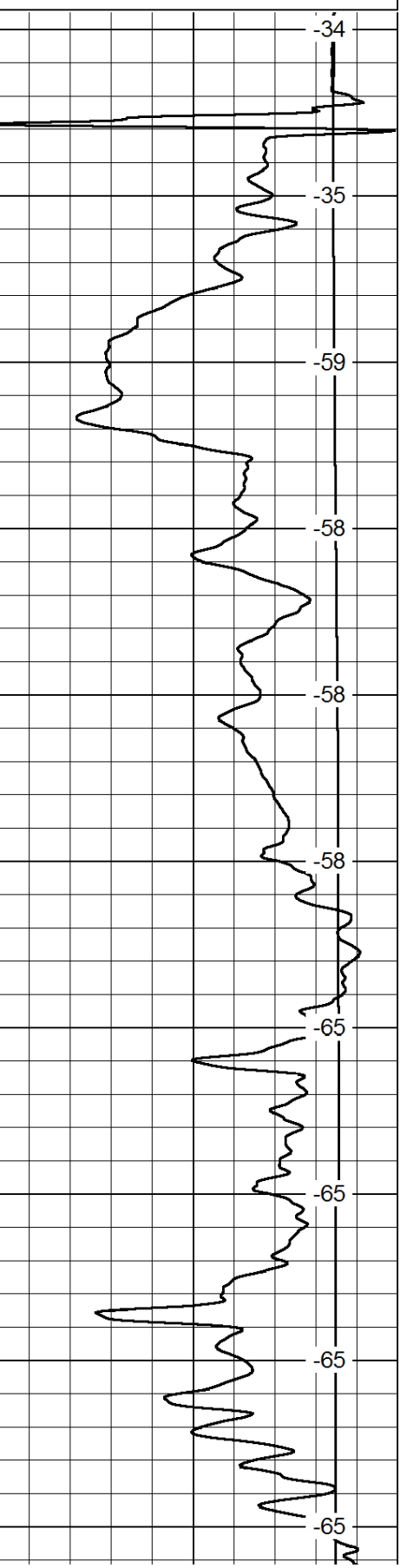
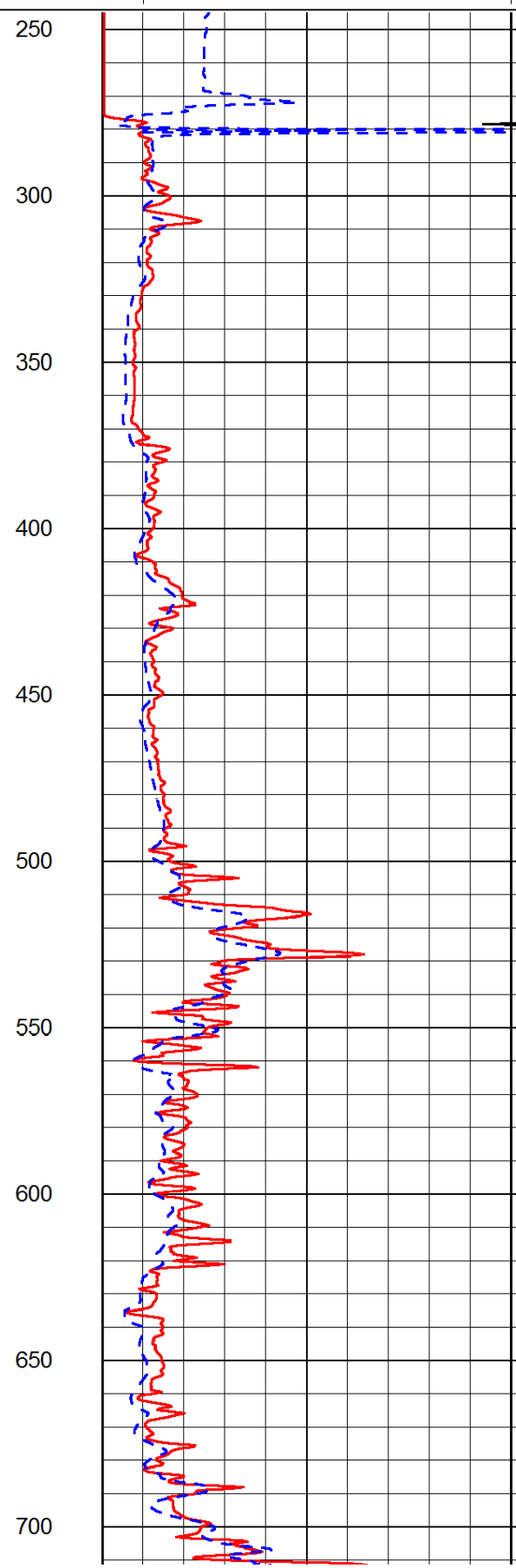
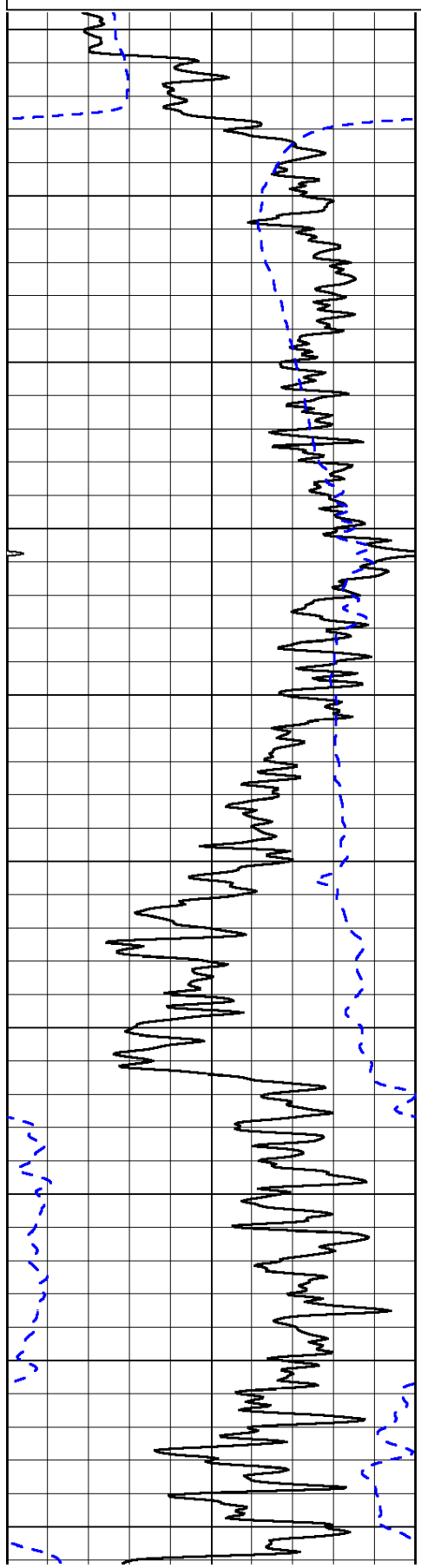
0	Gamma Ray	150
-200	SP (mV)	0

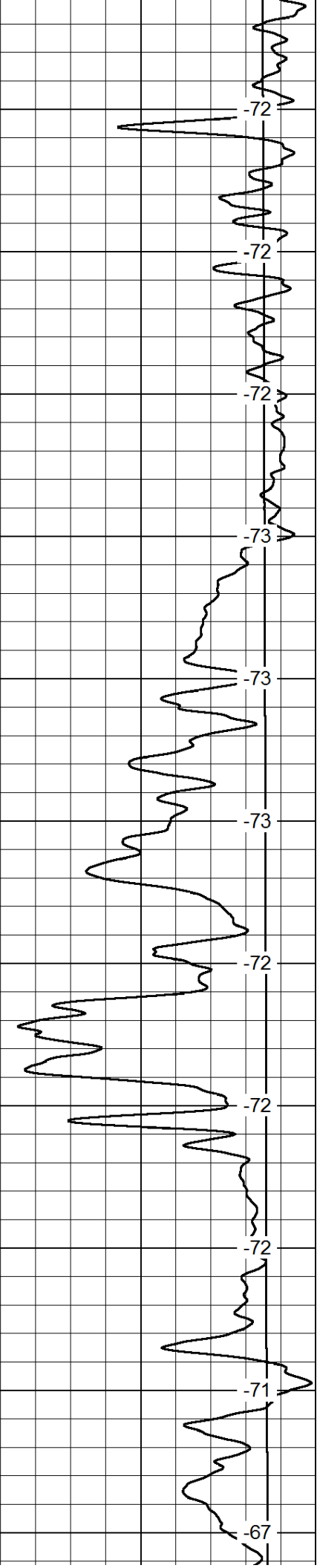
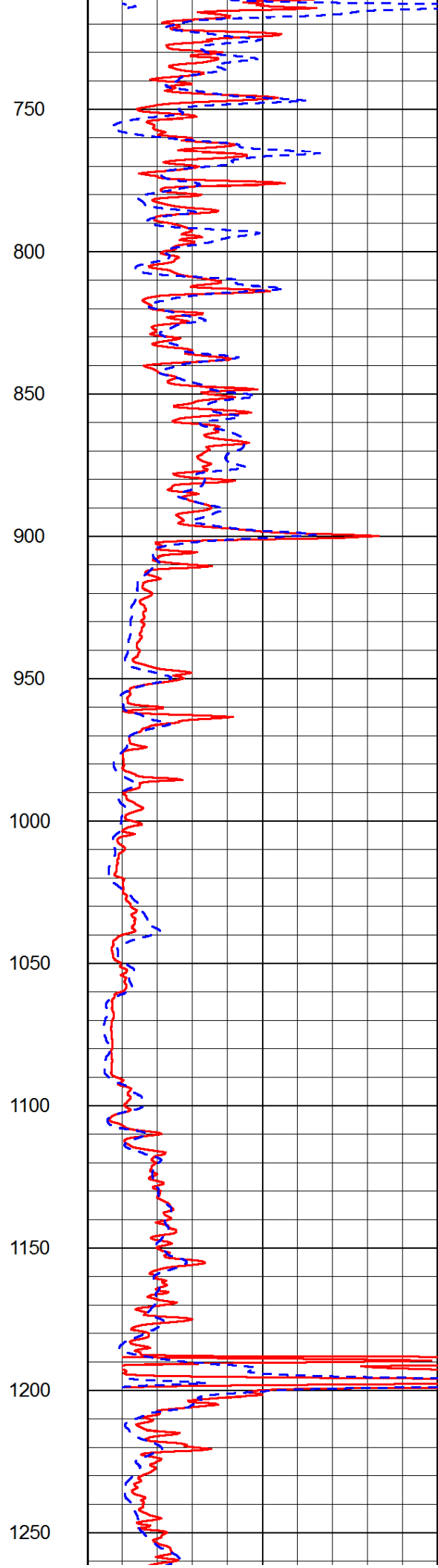
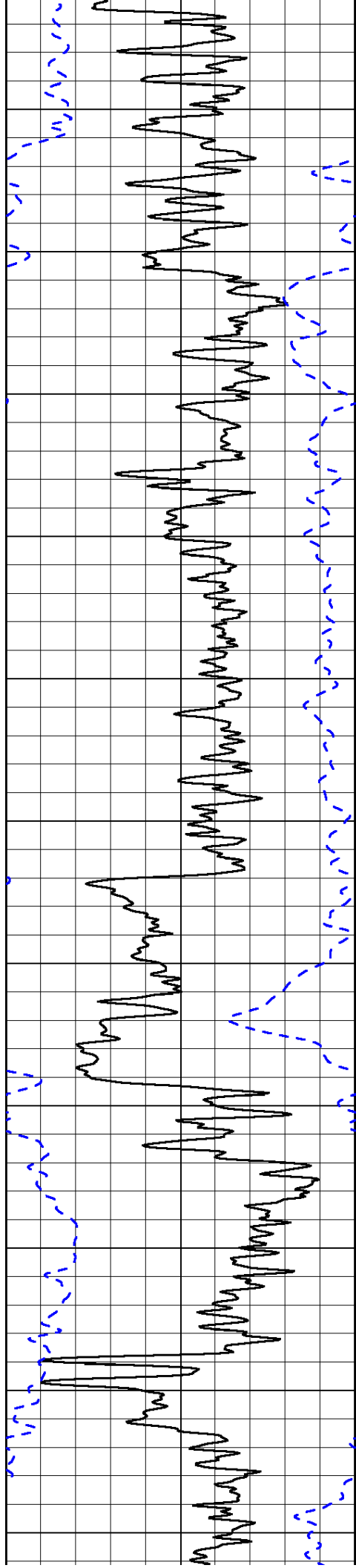
0	Shallow Resistivity	50
0	Deep Resistivity	50

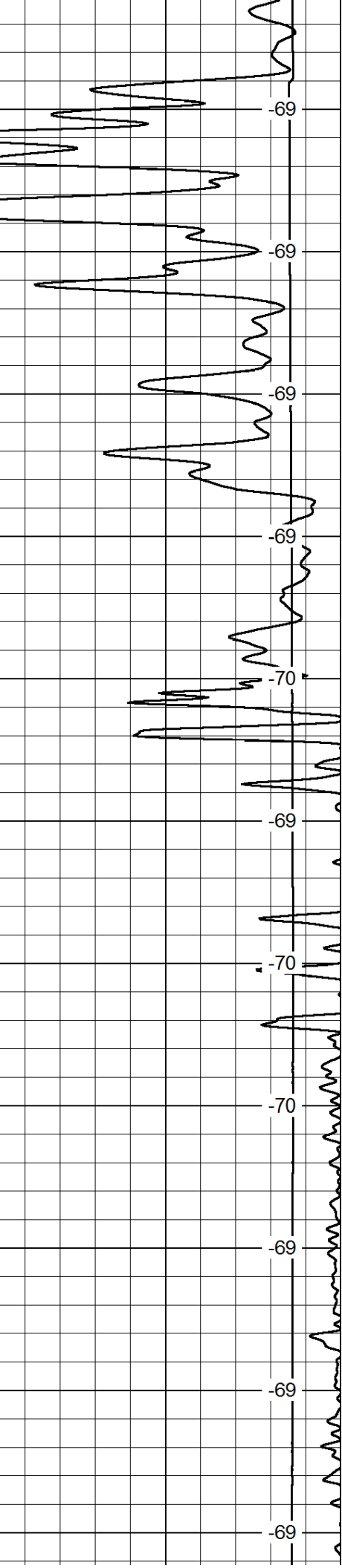
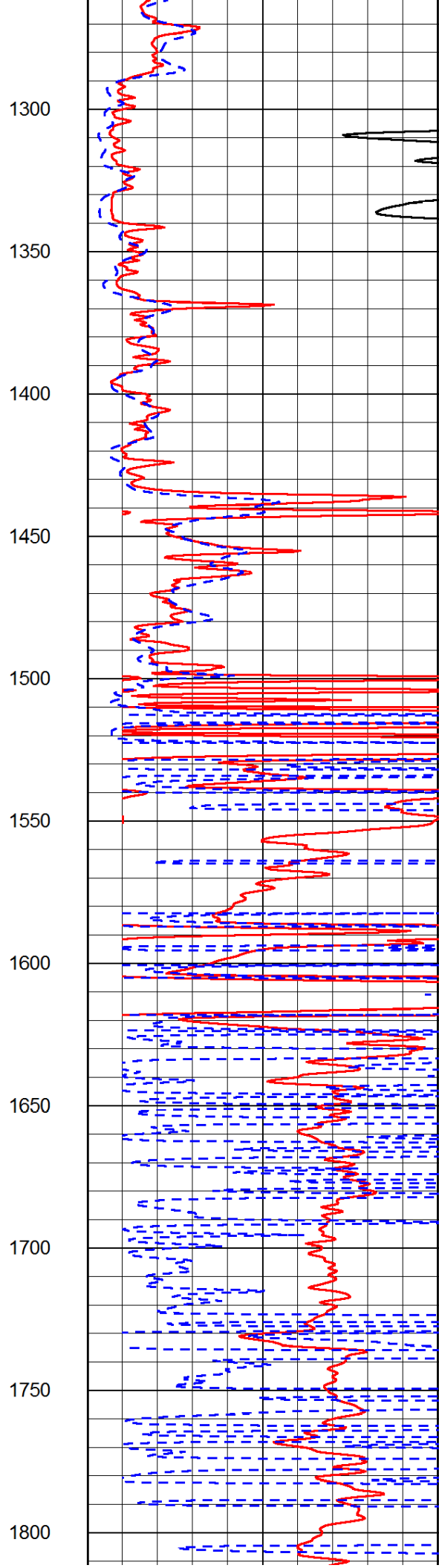
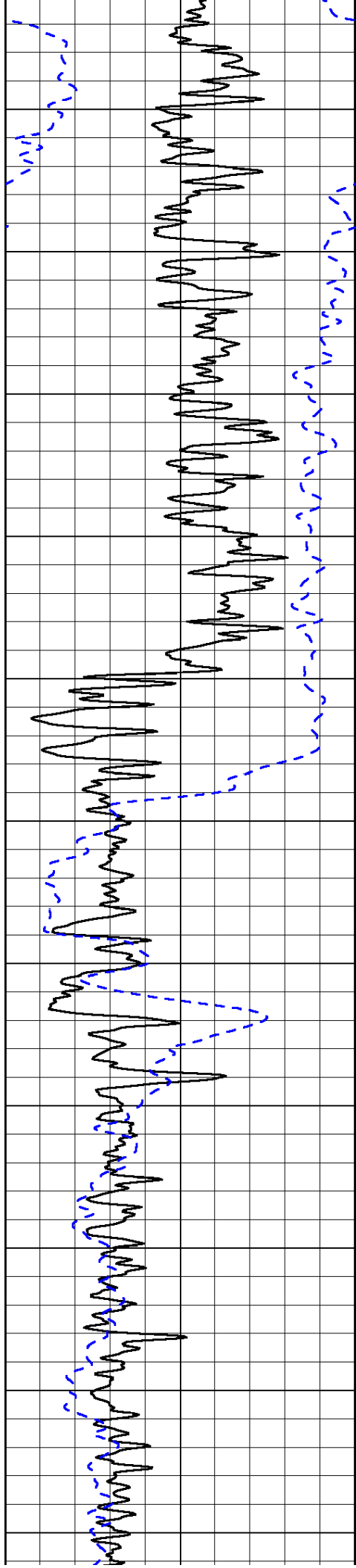
LSPD

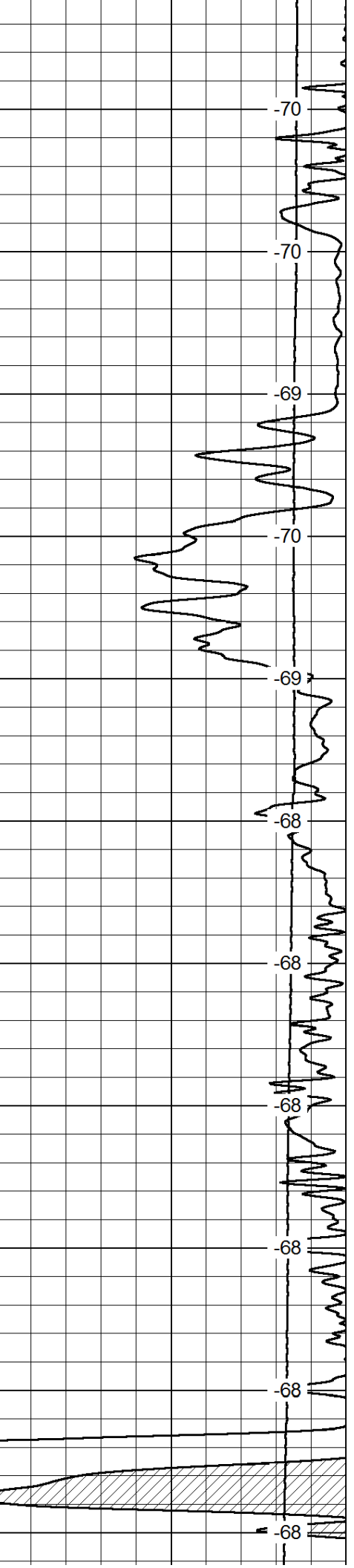
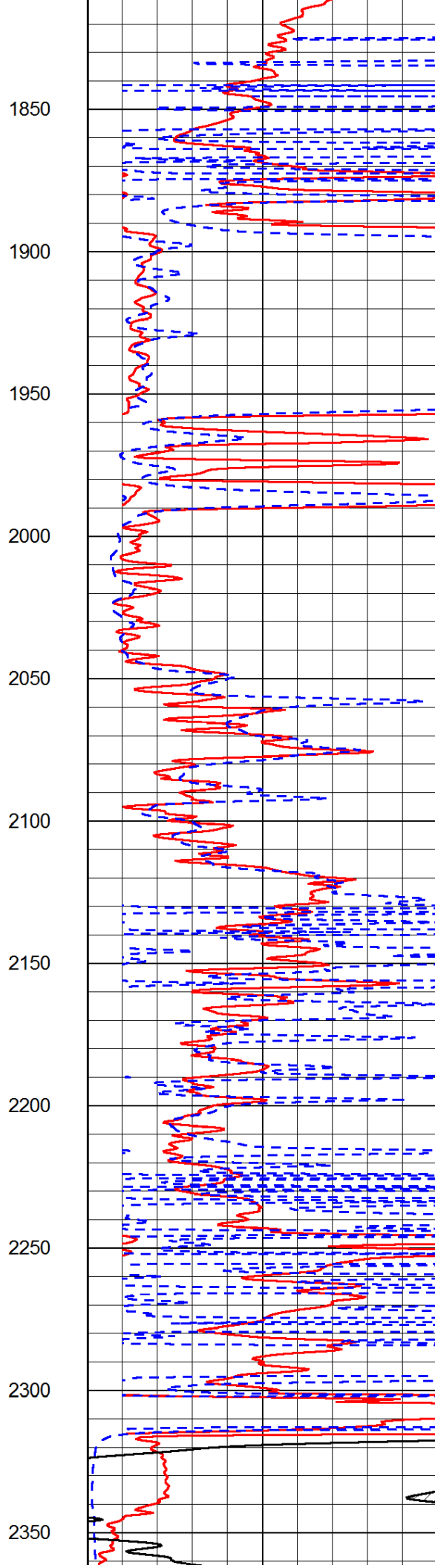
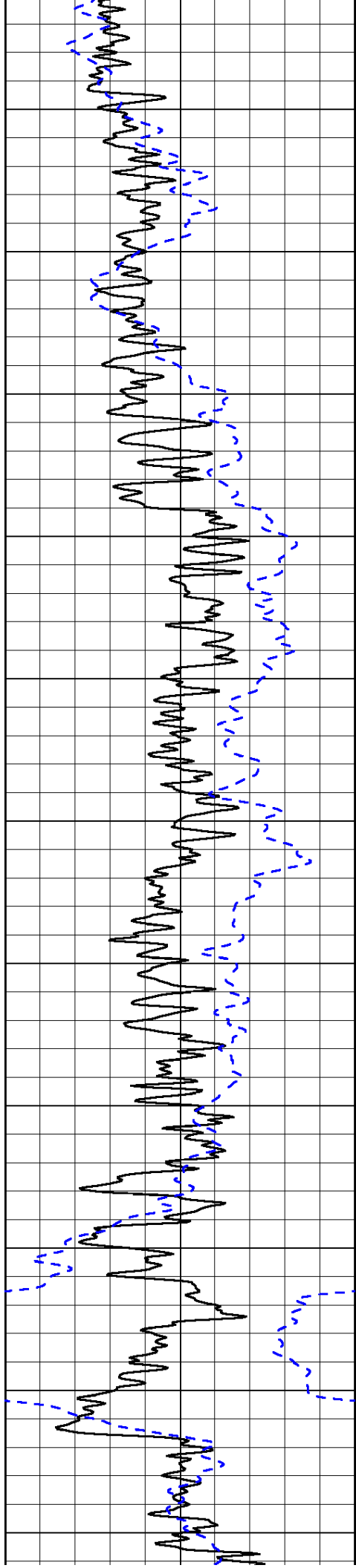
1000	Conductivity	0
15000	Line Tension	0

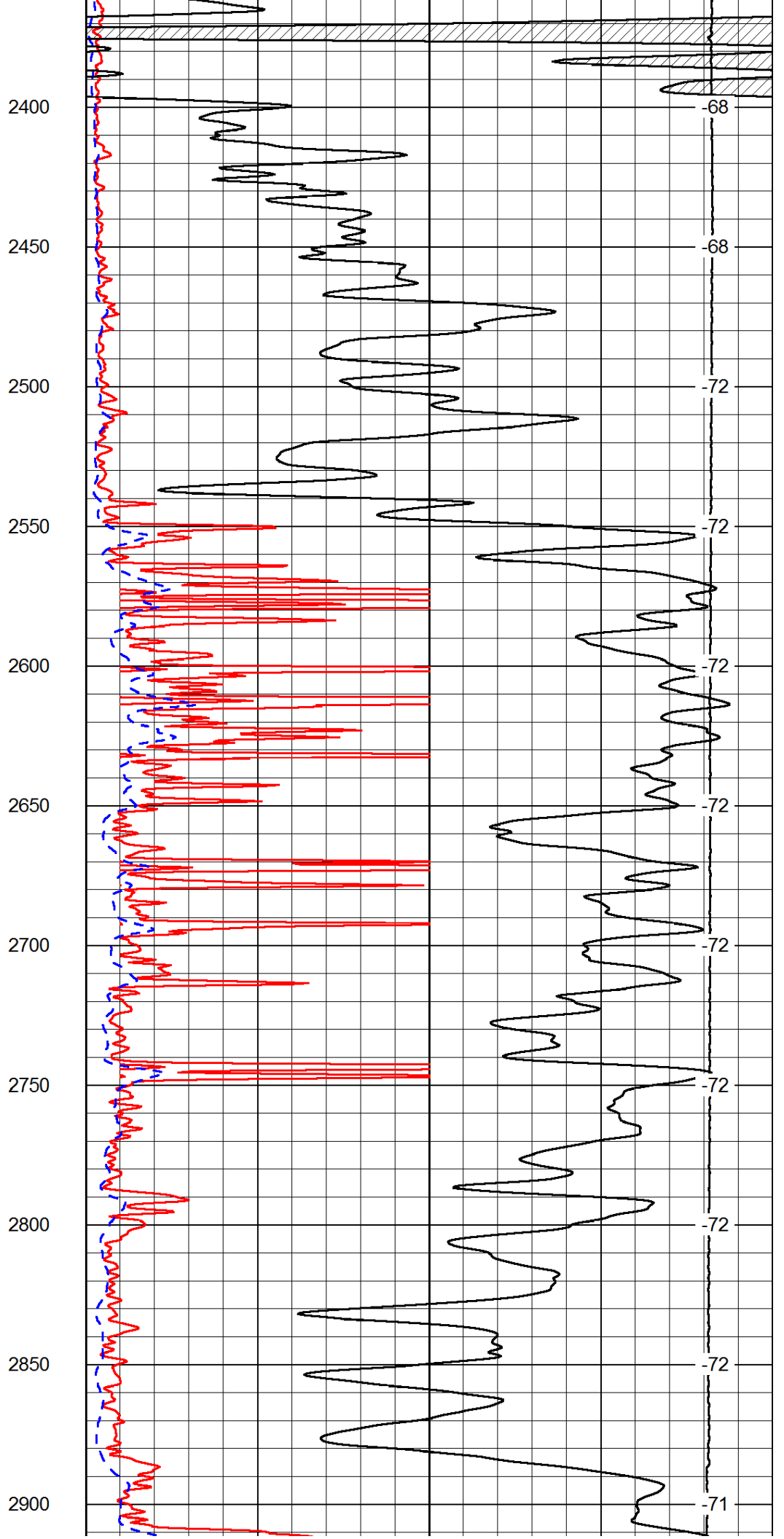
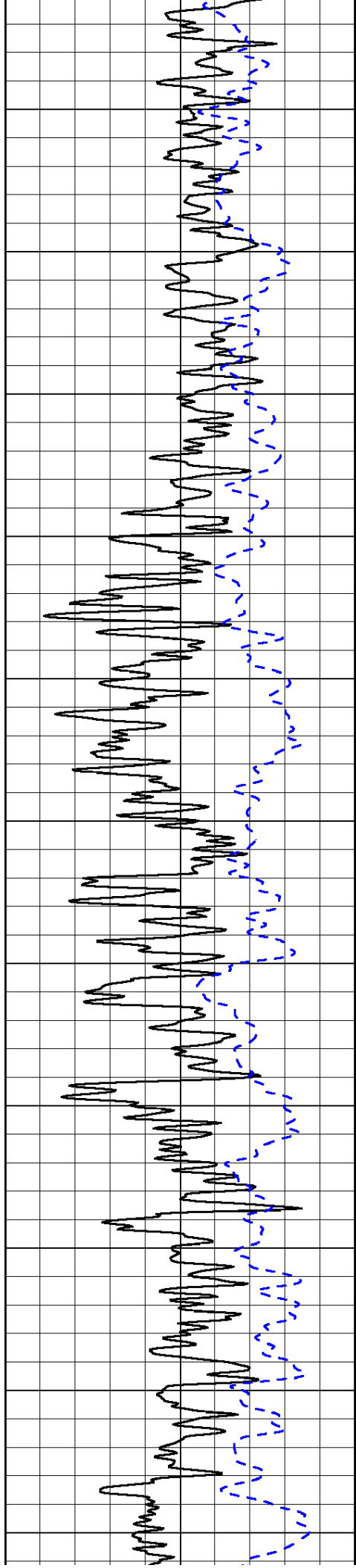
50	Shallow Resistivity	500
50	Deep Resistivity	500

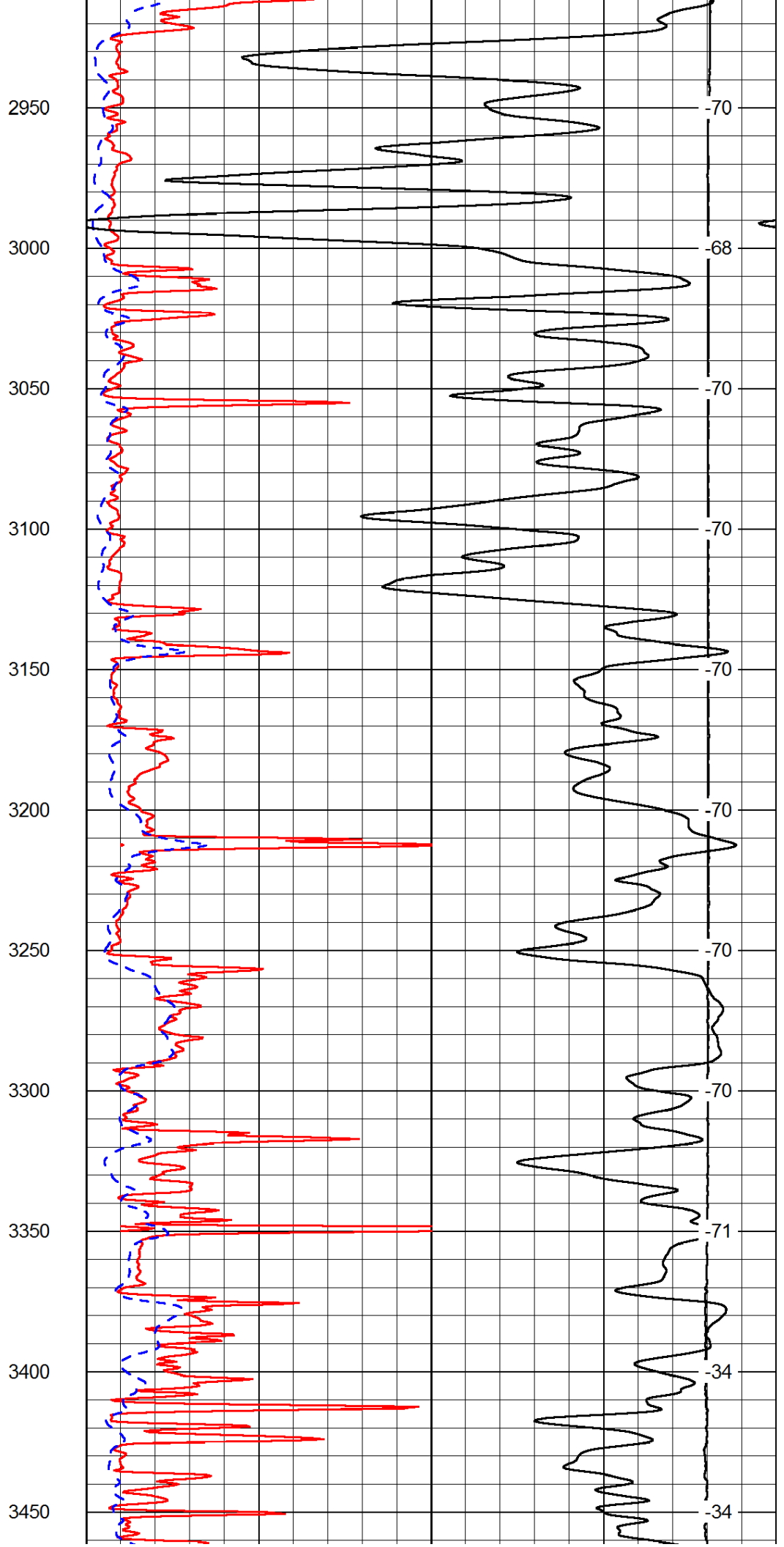
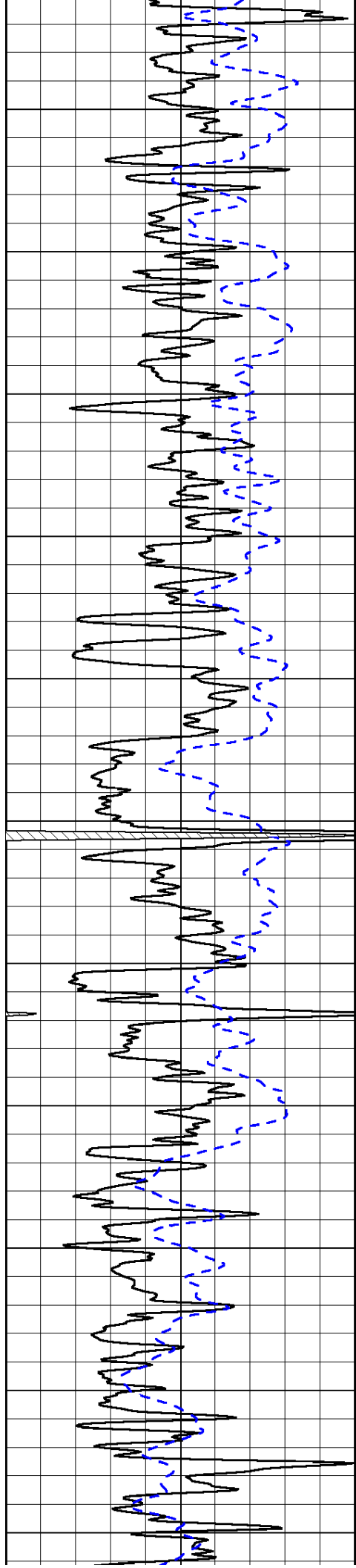


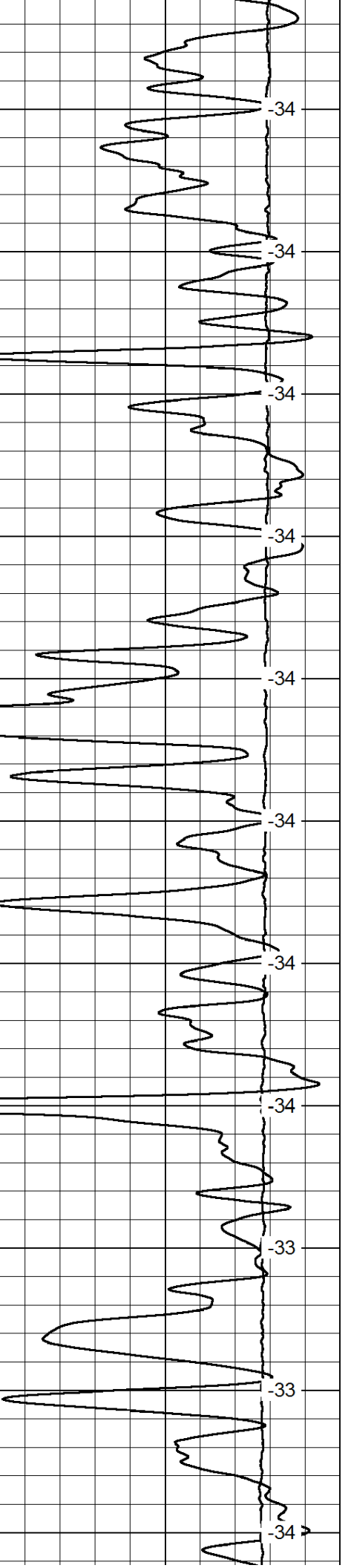
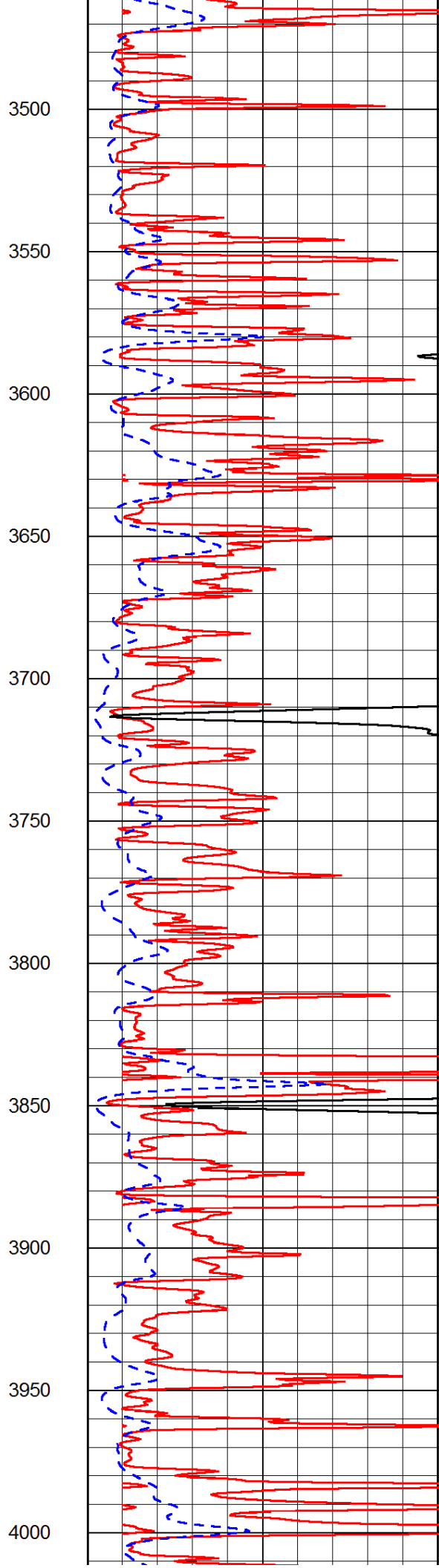
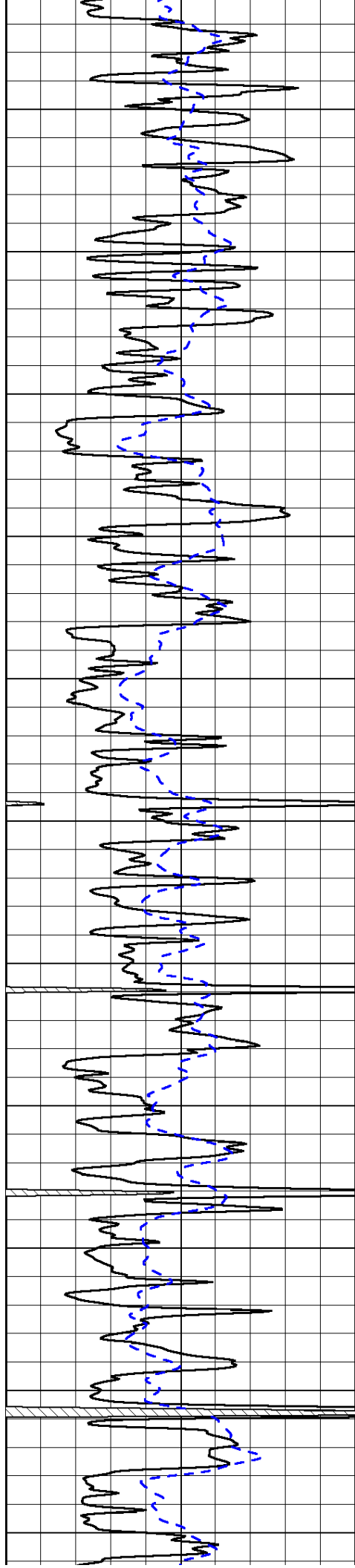


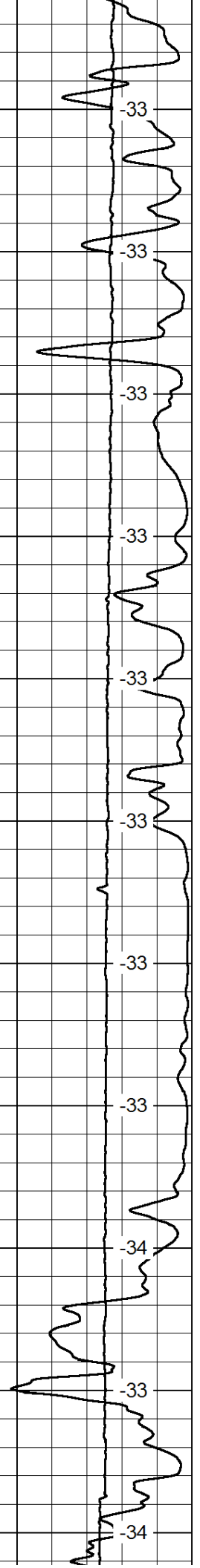
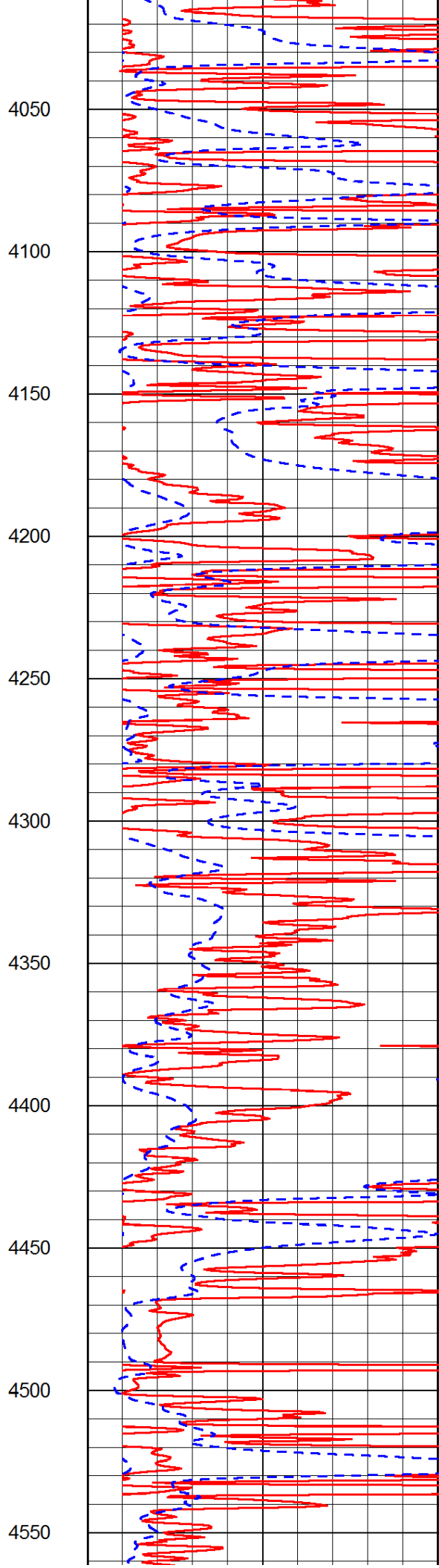
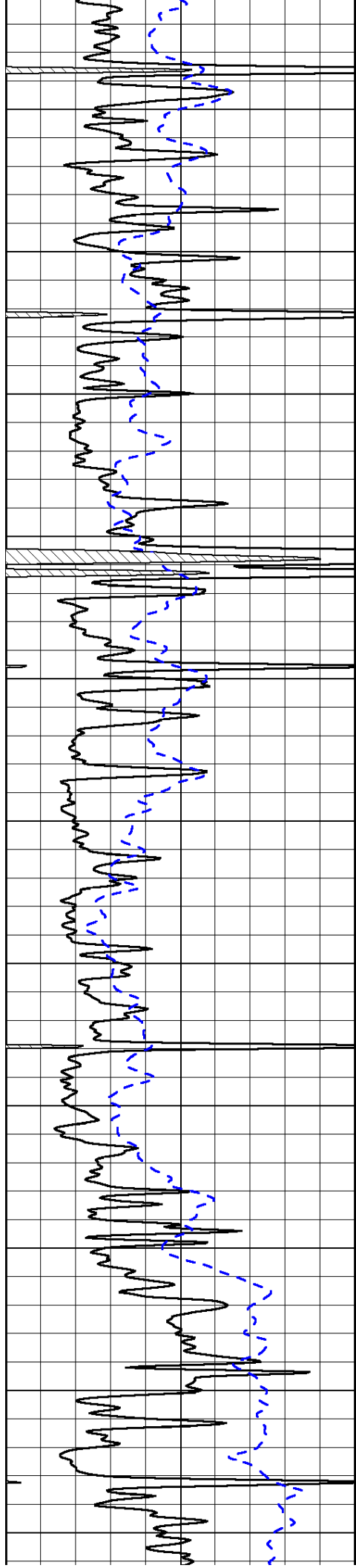


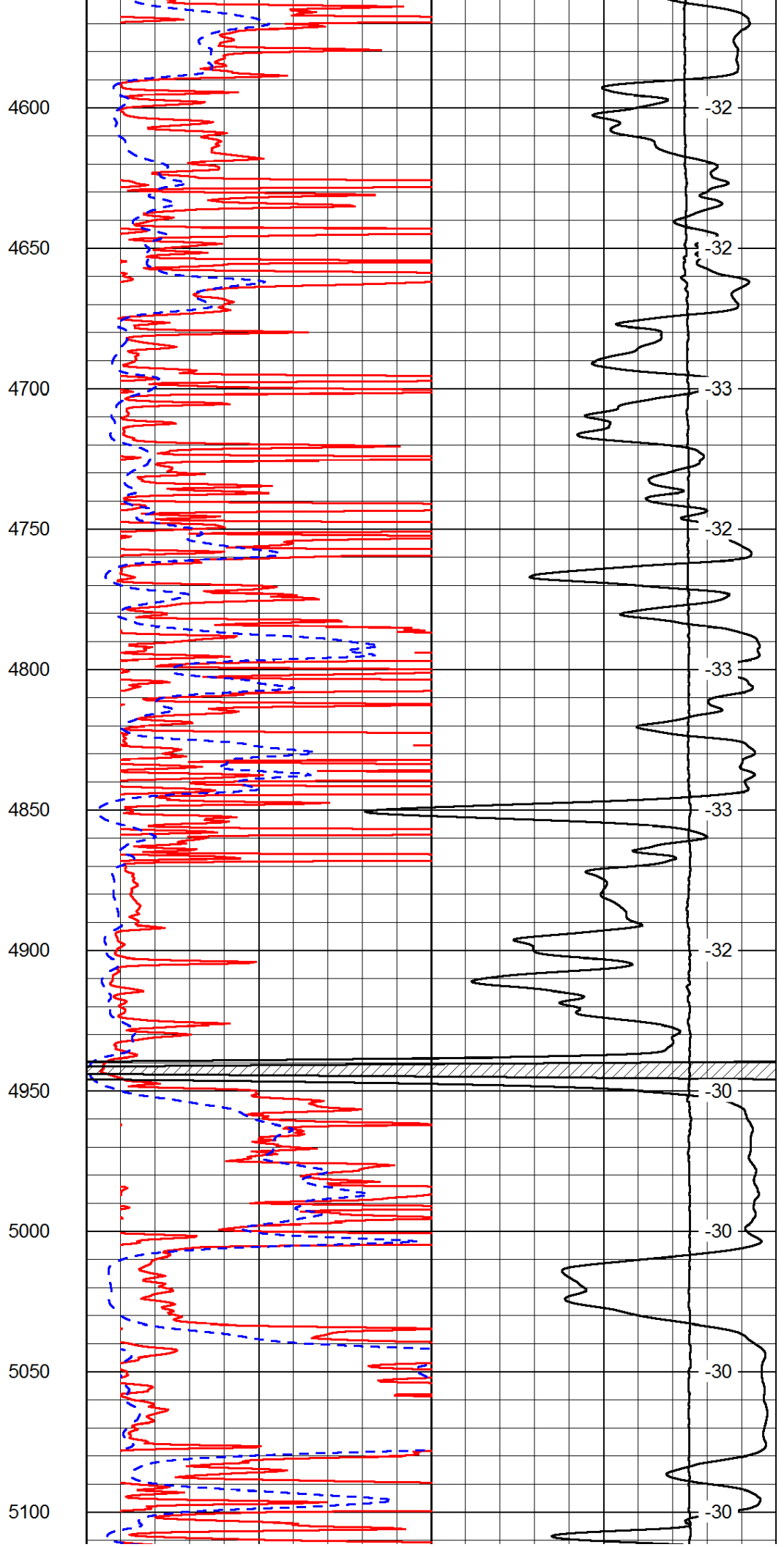
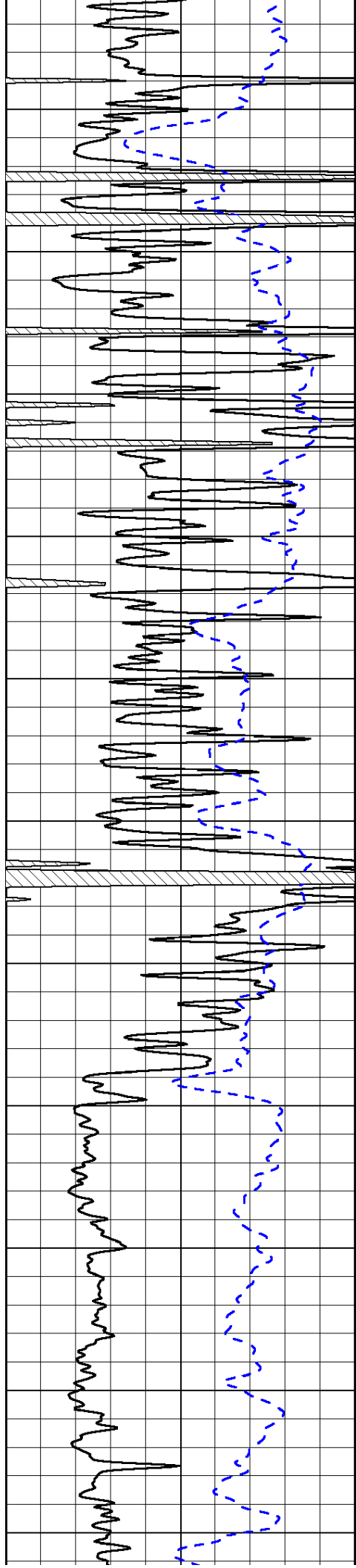


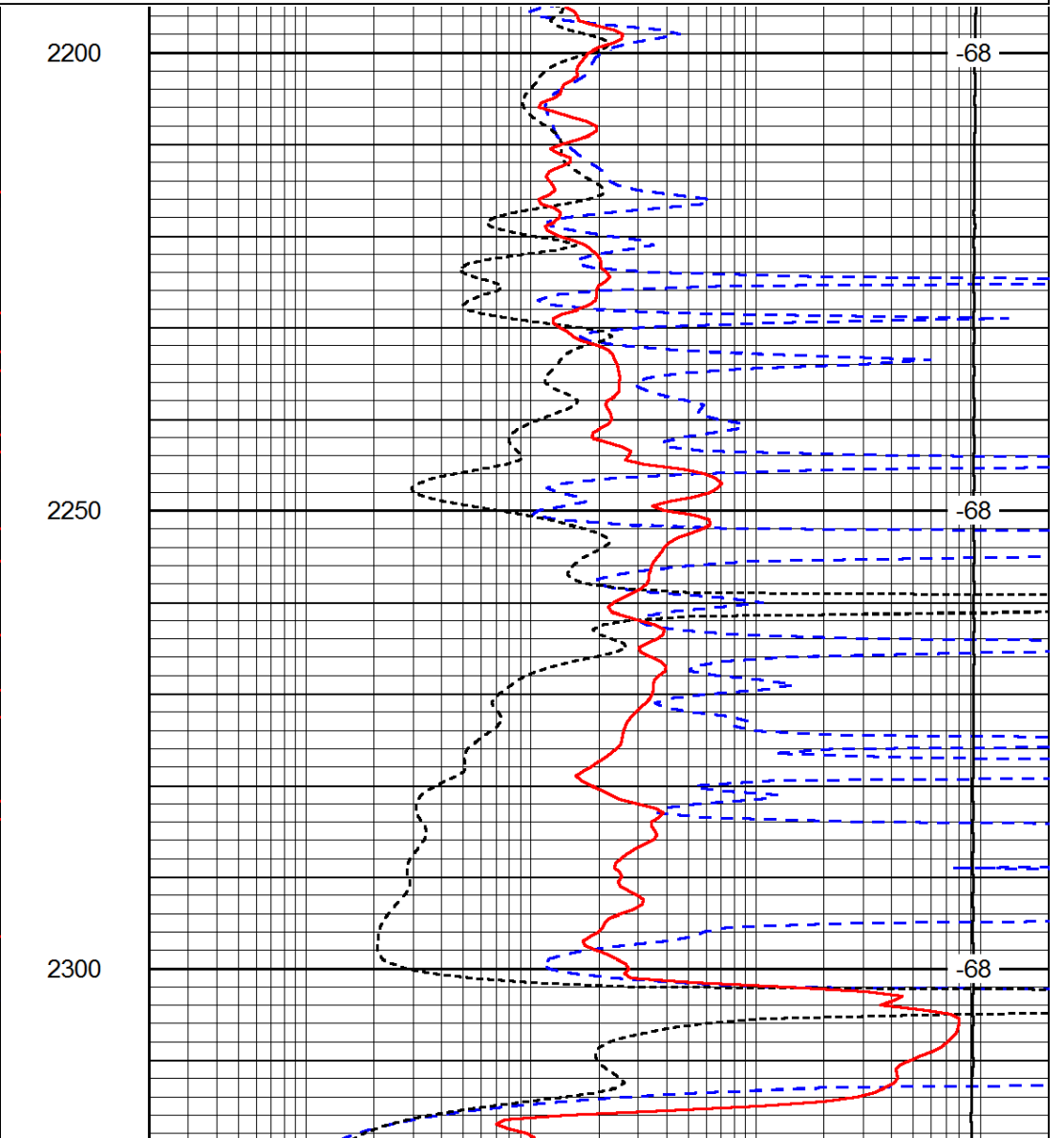
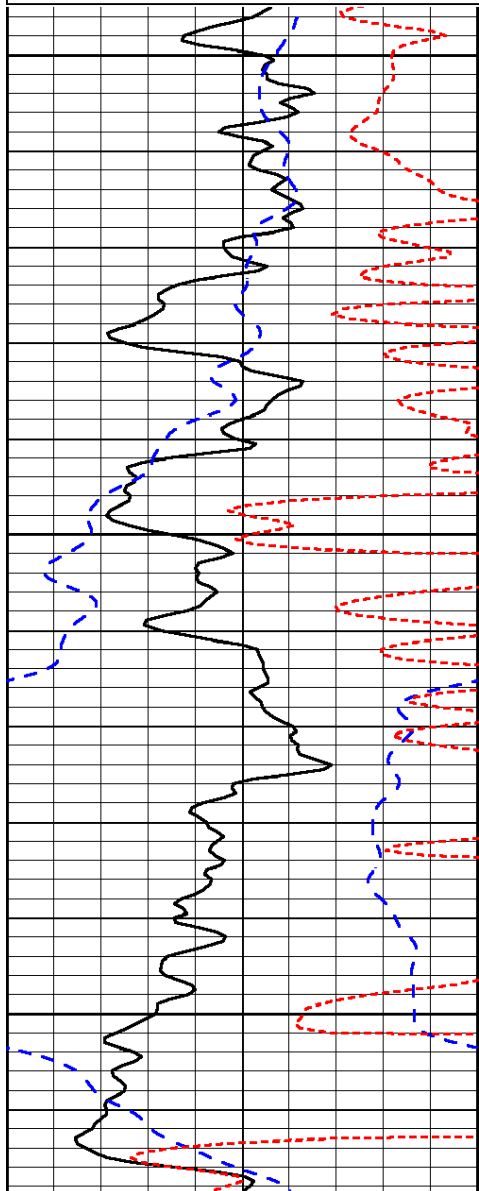
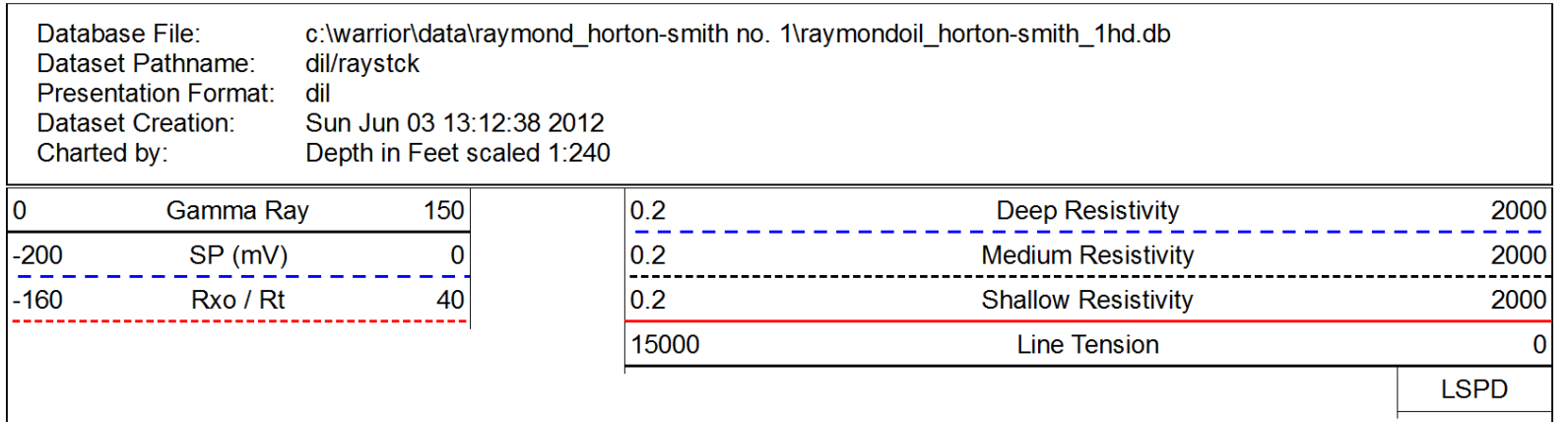
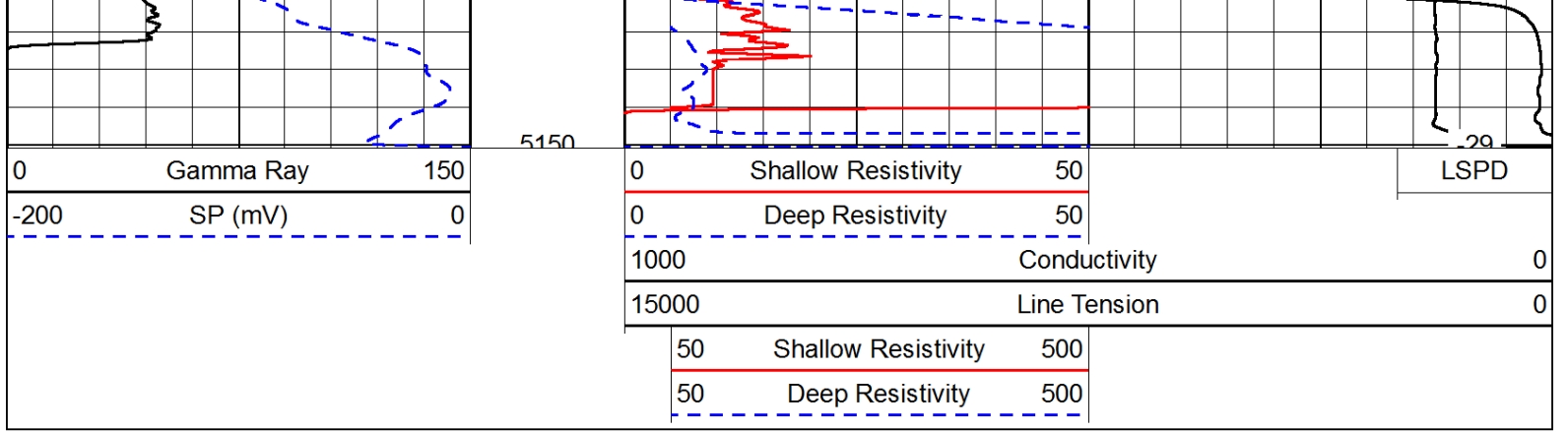


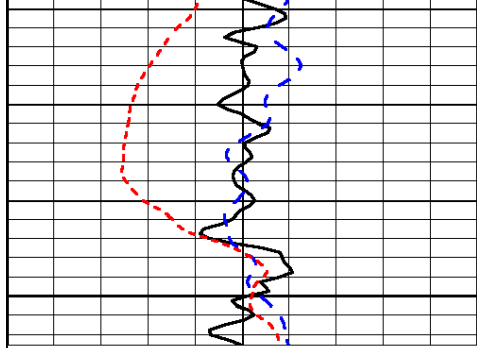






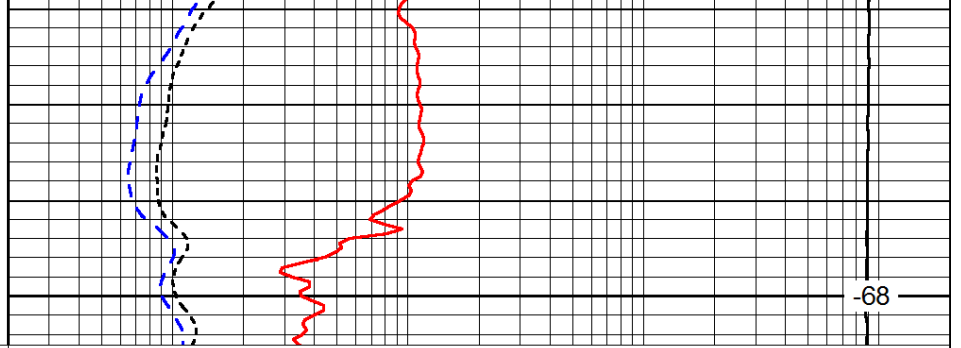






0	Gamma Ray	150
-200	SP (mV)	0
-160	Rxo / Rt	40

2350



0.2	Deep Resistivity	2000
0.2	Medium Resistivity	2000
0.2	Shallow Resistivity	2000
15000	Line Tension	0

-68

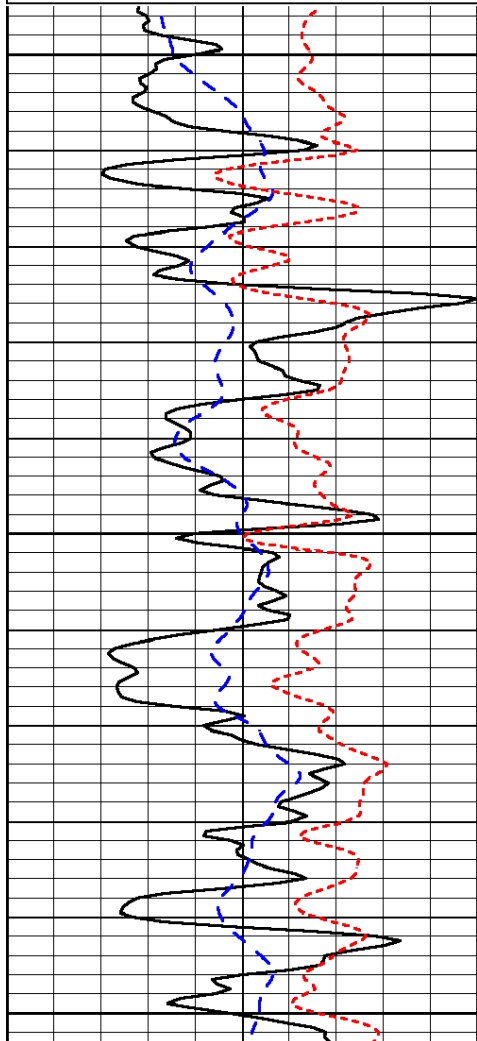
LSPD

Database File: c:\warrior\data\raymond_horton-smith no. 1\raymondoil_horton-smith_1hd.db
 Dataset Pathname: dil/raystck
 Presentation Format: dil
 Dataset Creation: Sun Jun 03 13:12:38 2012
 Charted by: Depth in Feet scaled 1:240

0	Gamma Ray	150
-200	SP (mV)	0
-160	Rxo / Rt	40

0.2	Deep Resistivity	2000
0.2	Medium Resistivity	2000
0.2	Shallow Resistivity	2000
15000	Line Tension	0

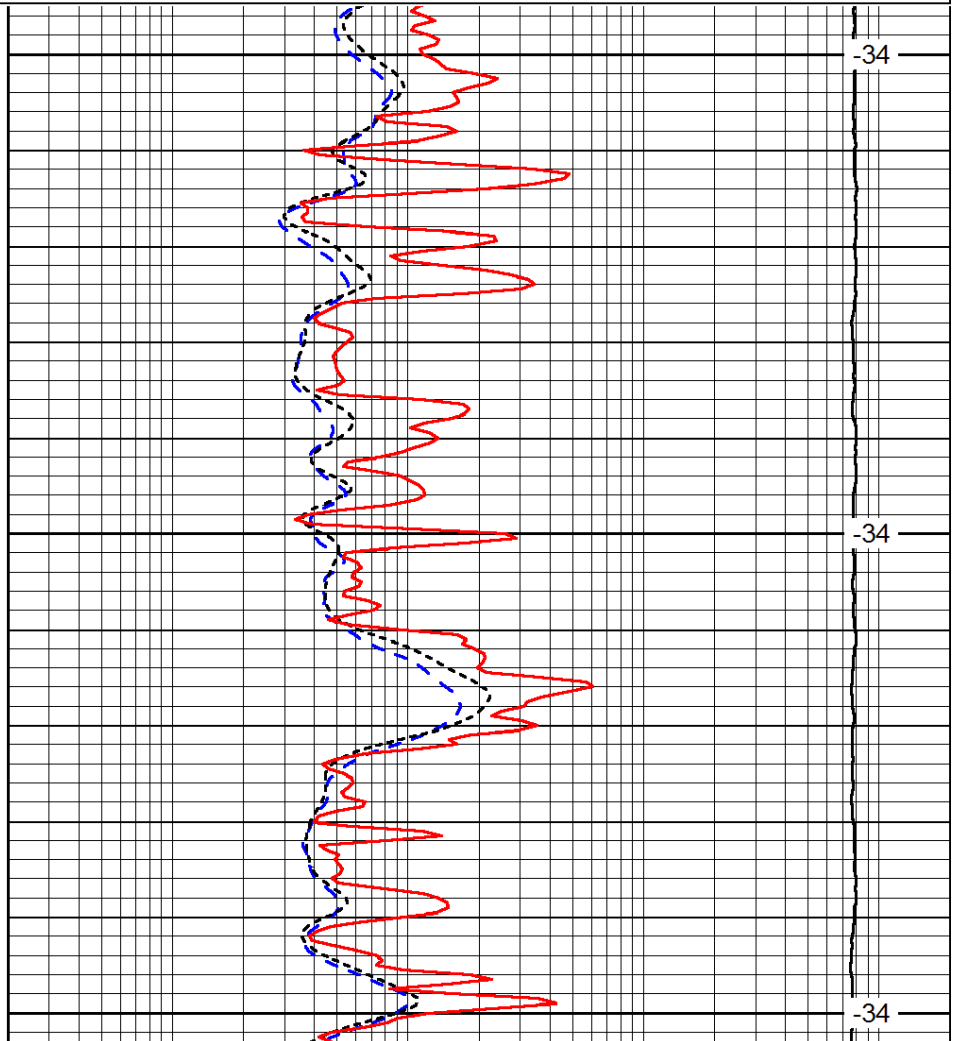
LSPD



3400

3450

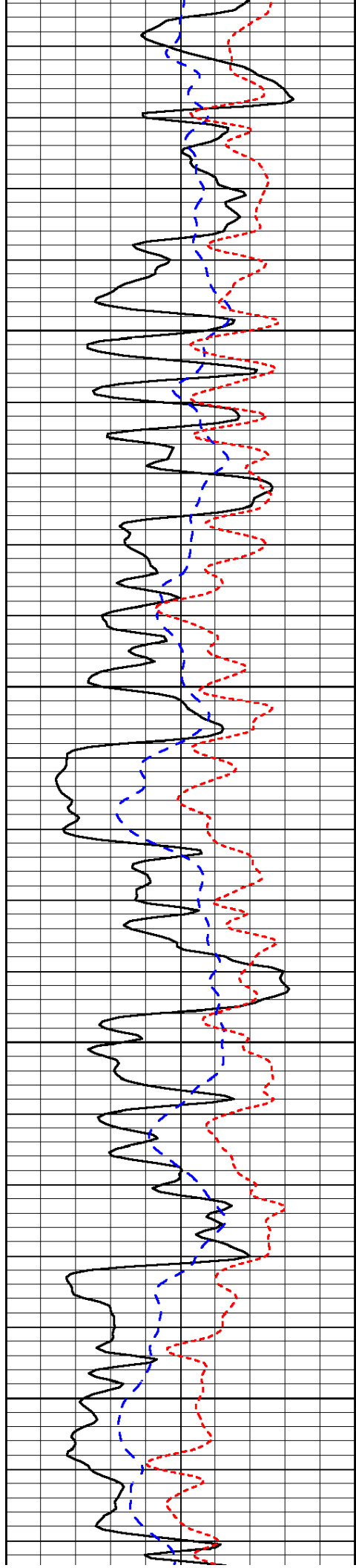
3500



-34

-34

-34

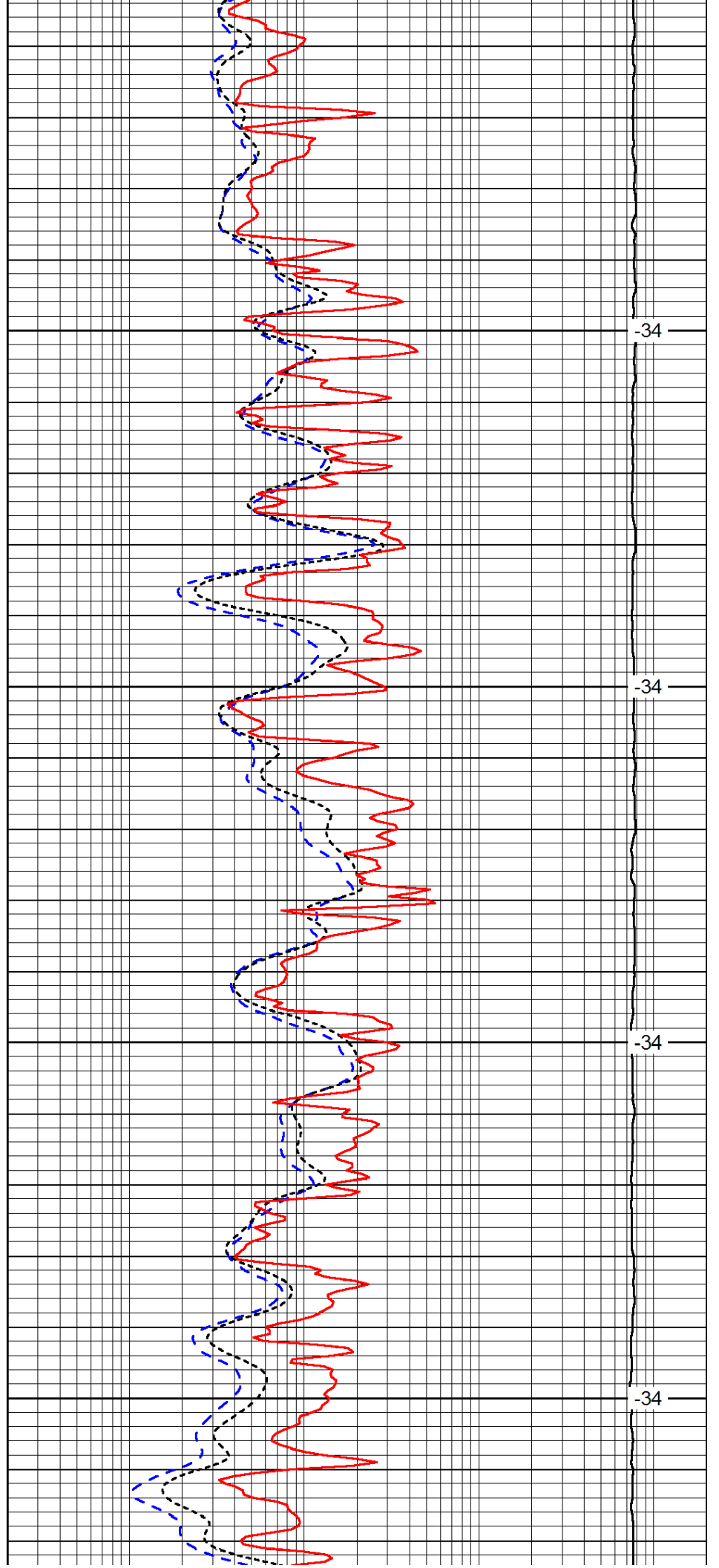


3550

3600

3650

3700

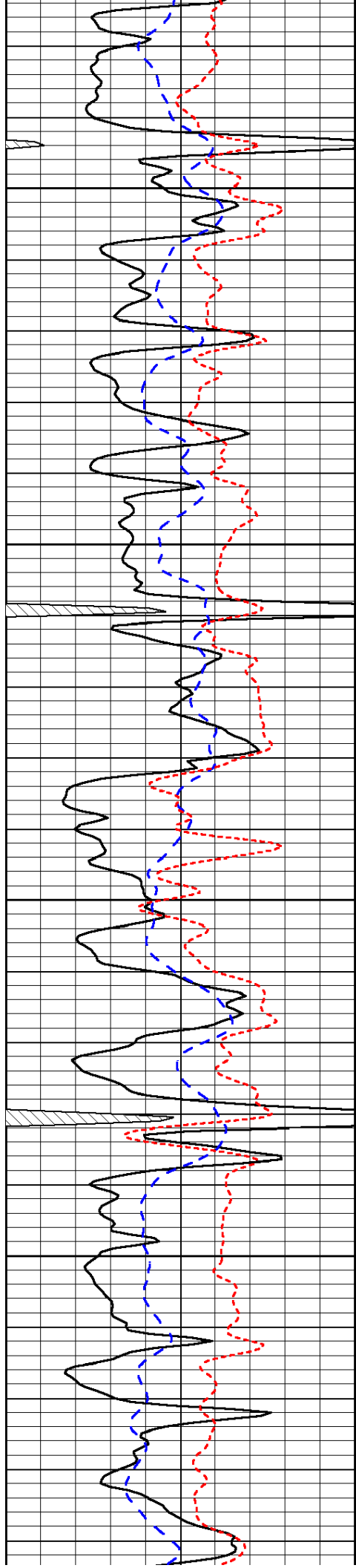


-34

-34

-34

-34

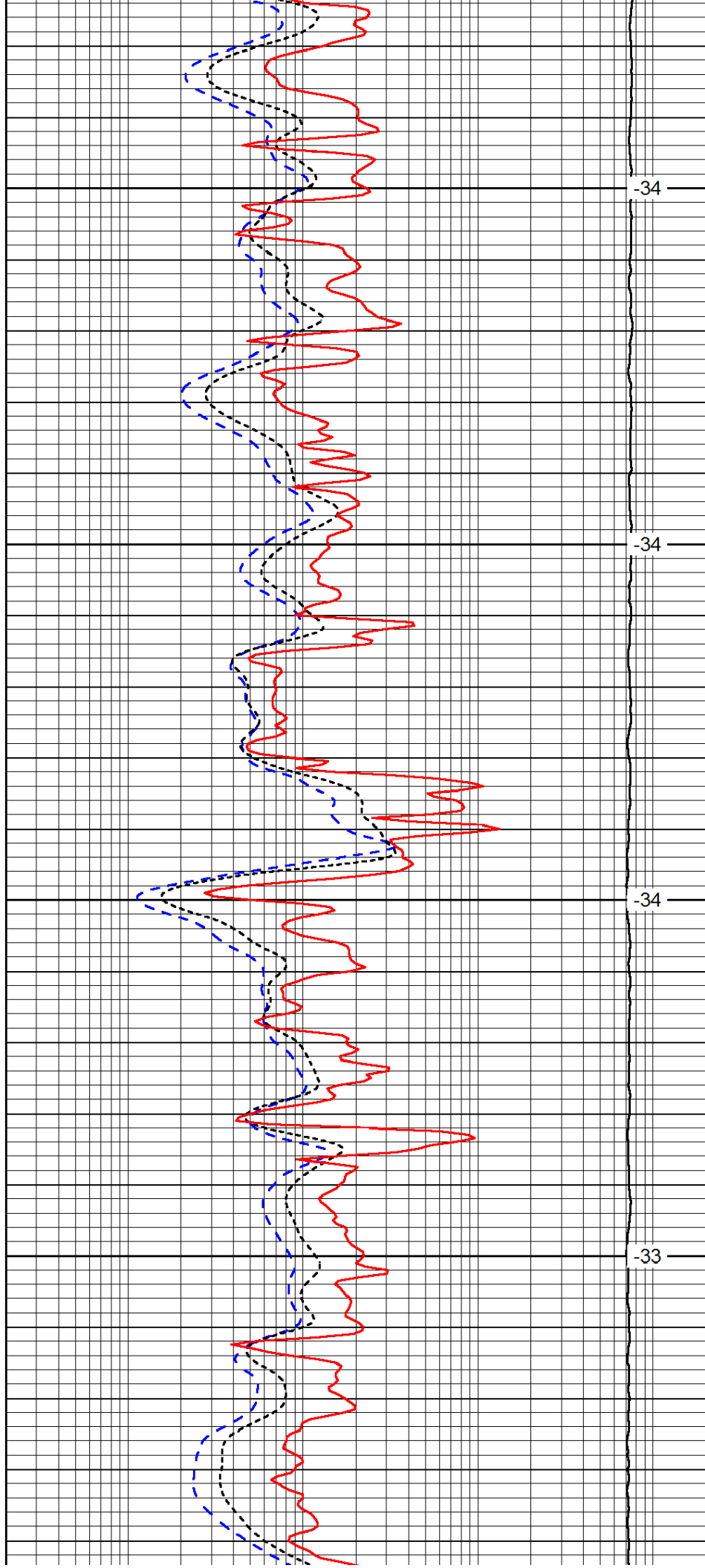


3750

3800

3850

3900

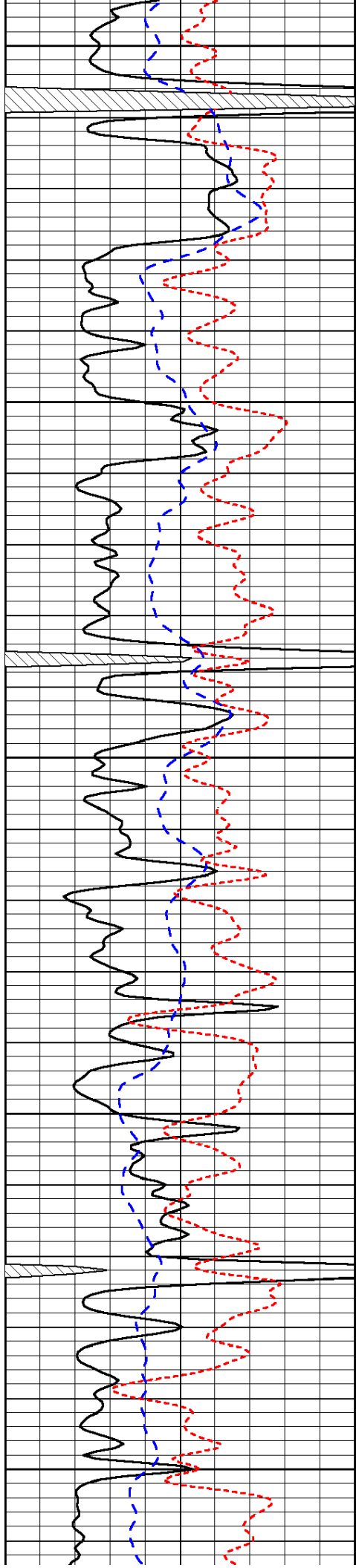


-34

-34

-34

-33



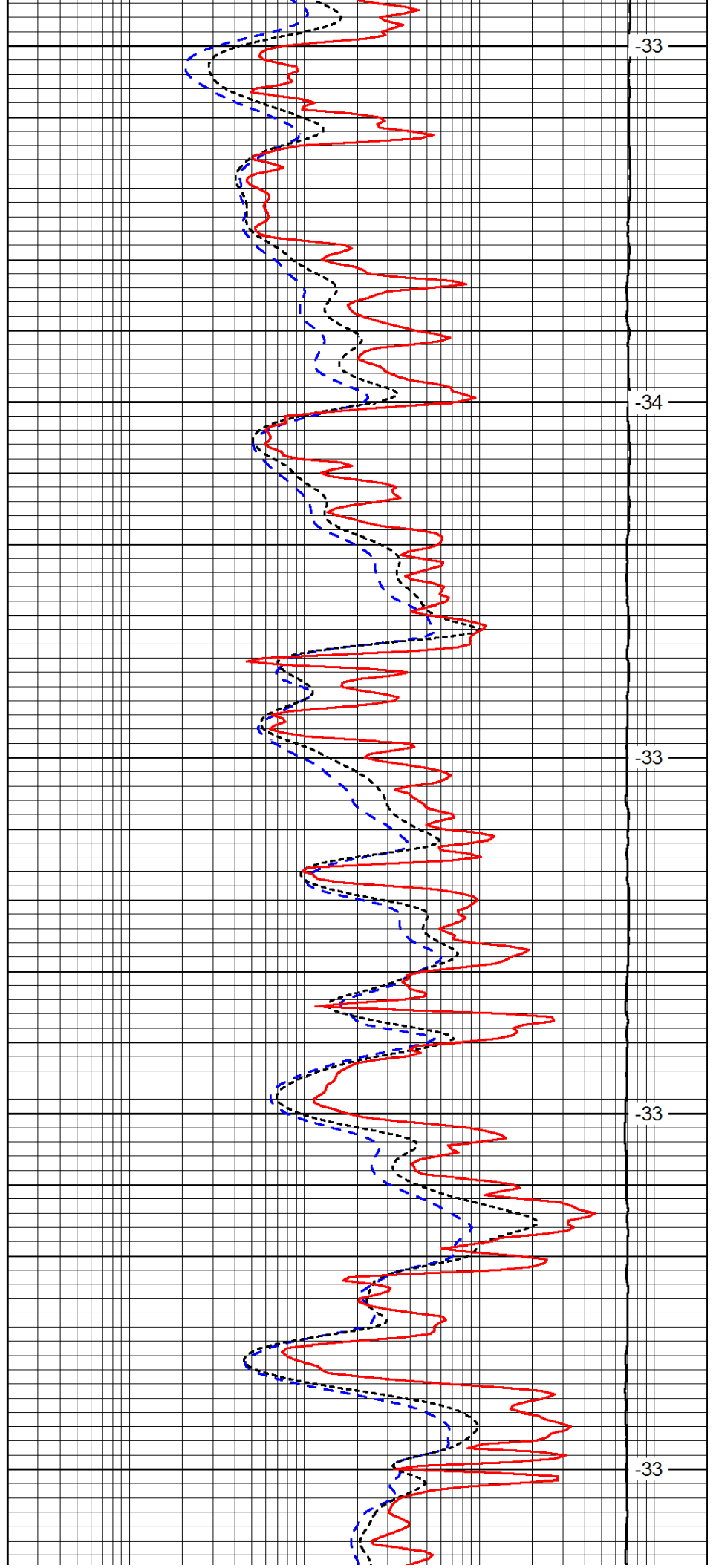
3950

4000

4050

4100

4150



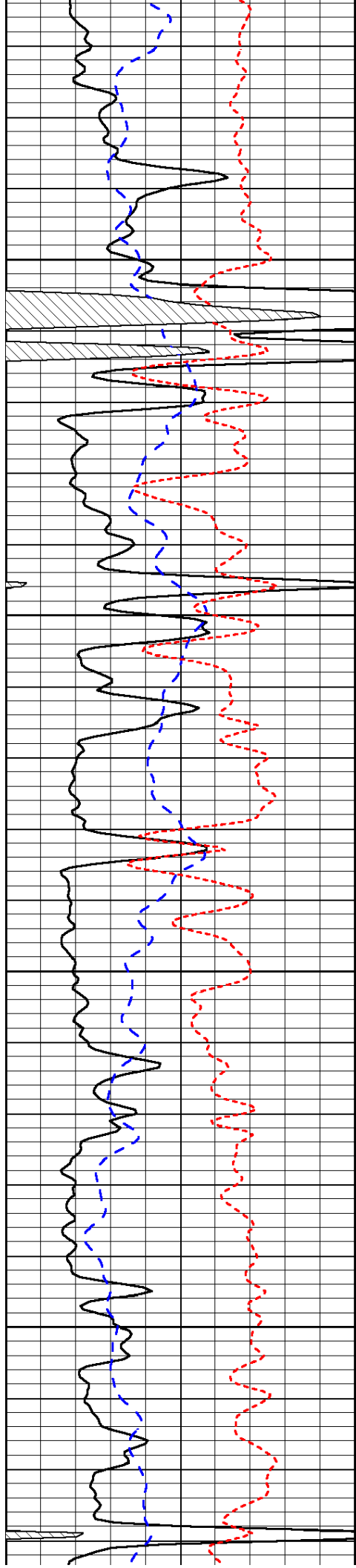
-33

-34

-33

-33

-33

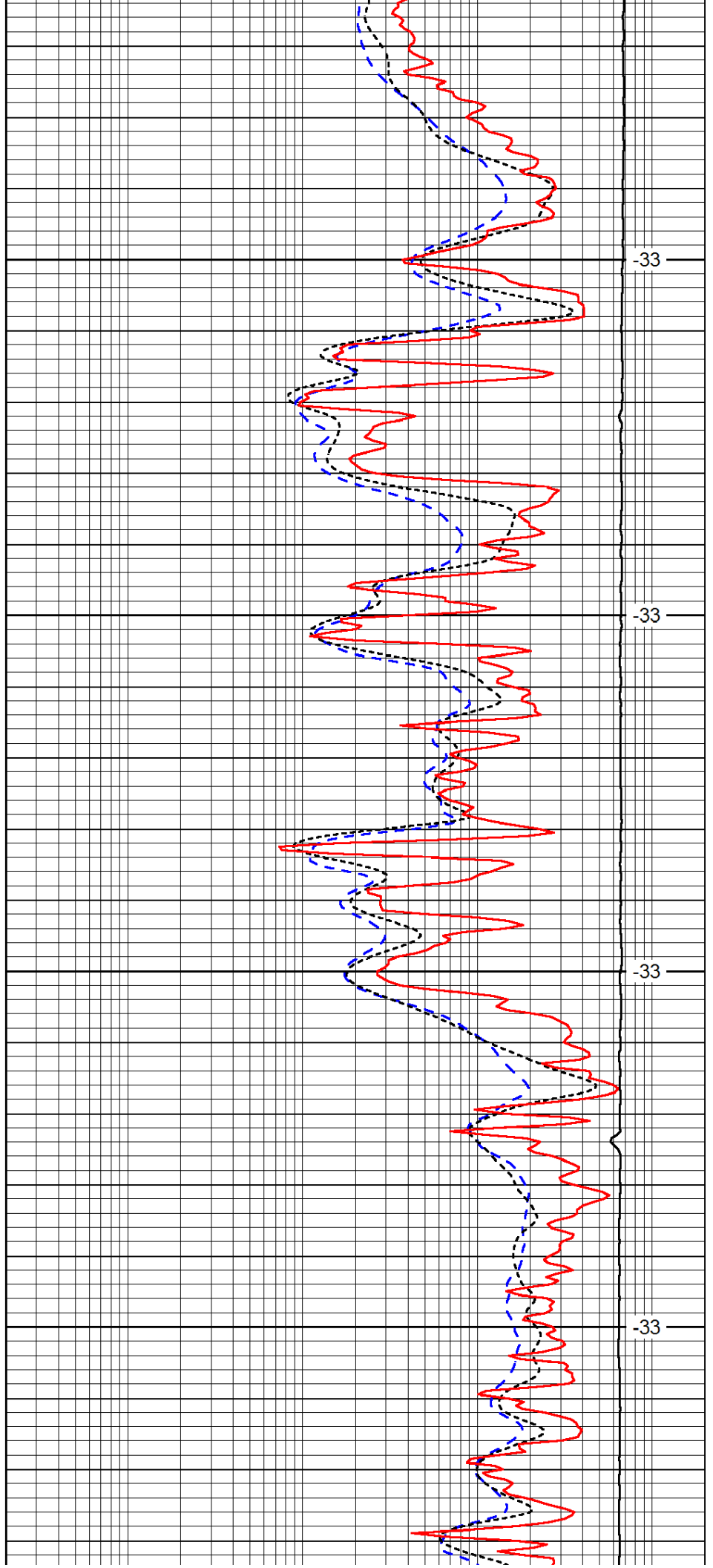


4200

4250

4300

4350

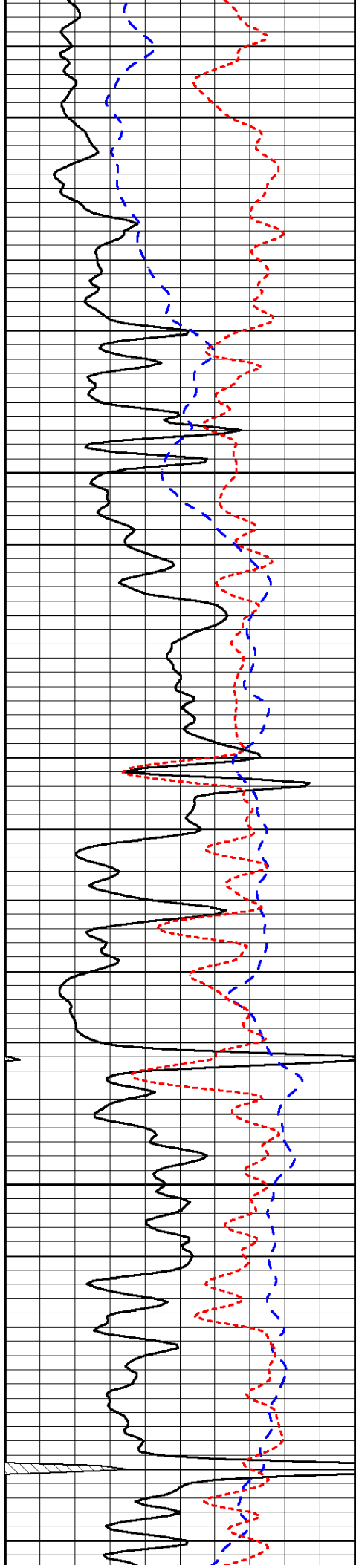


-33

-33

-33

-33



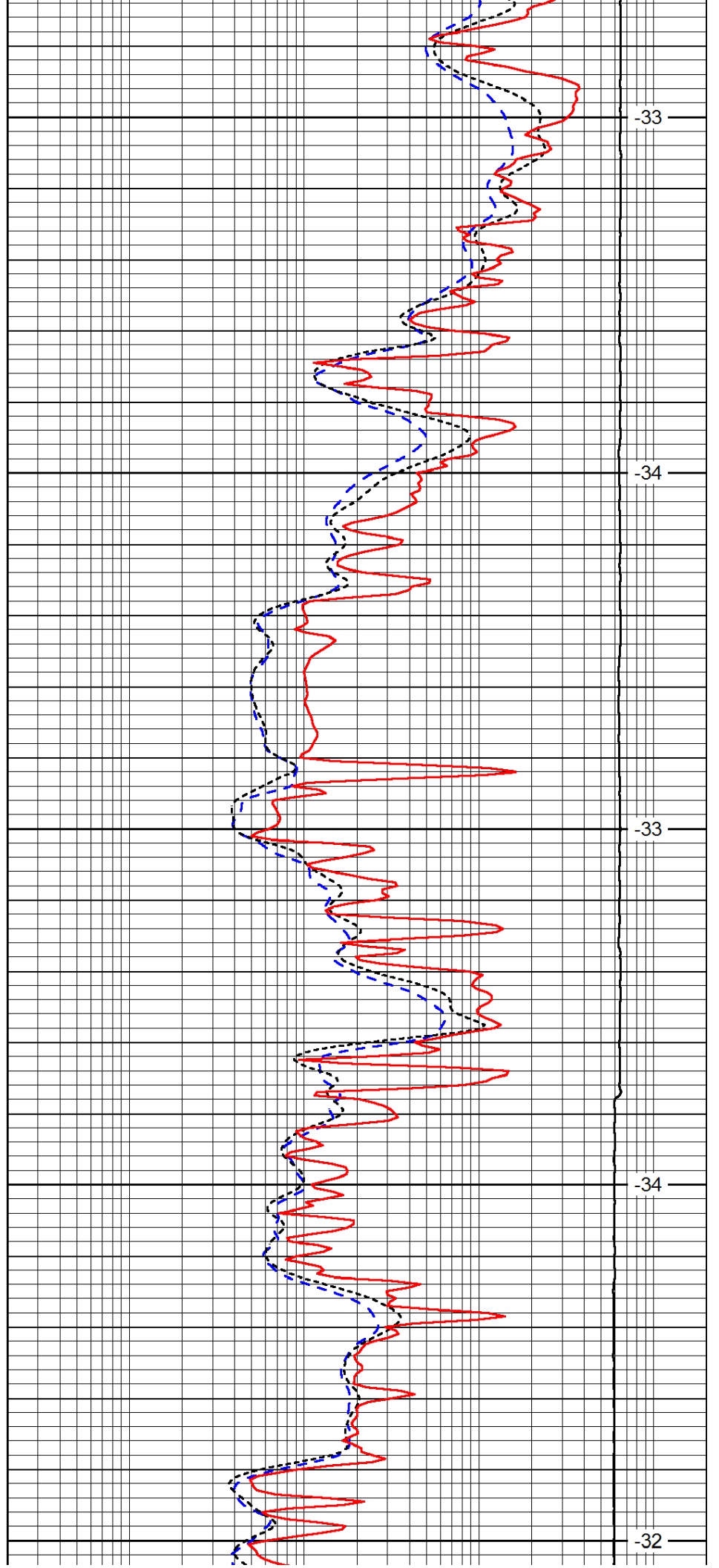
4400

4450

4500

4550

4600



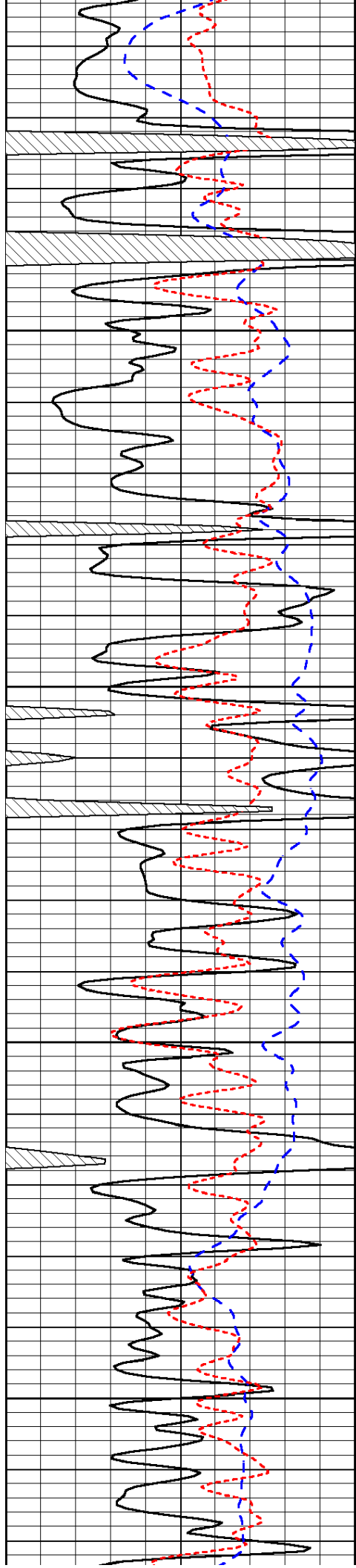
-33

-34

-33

-34

-32

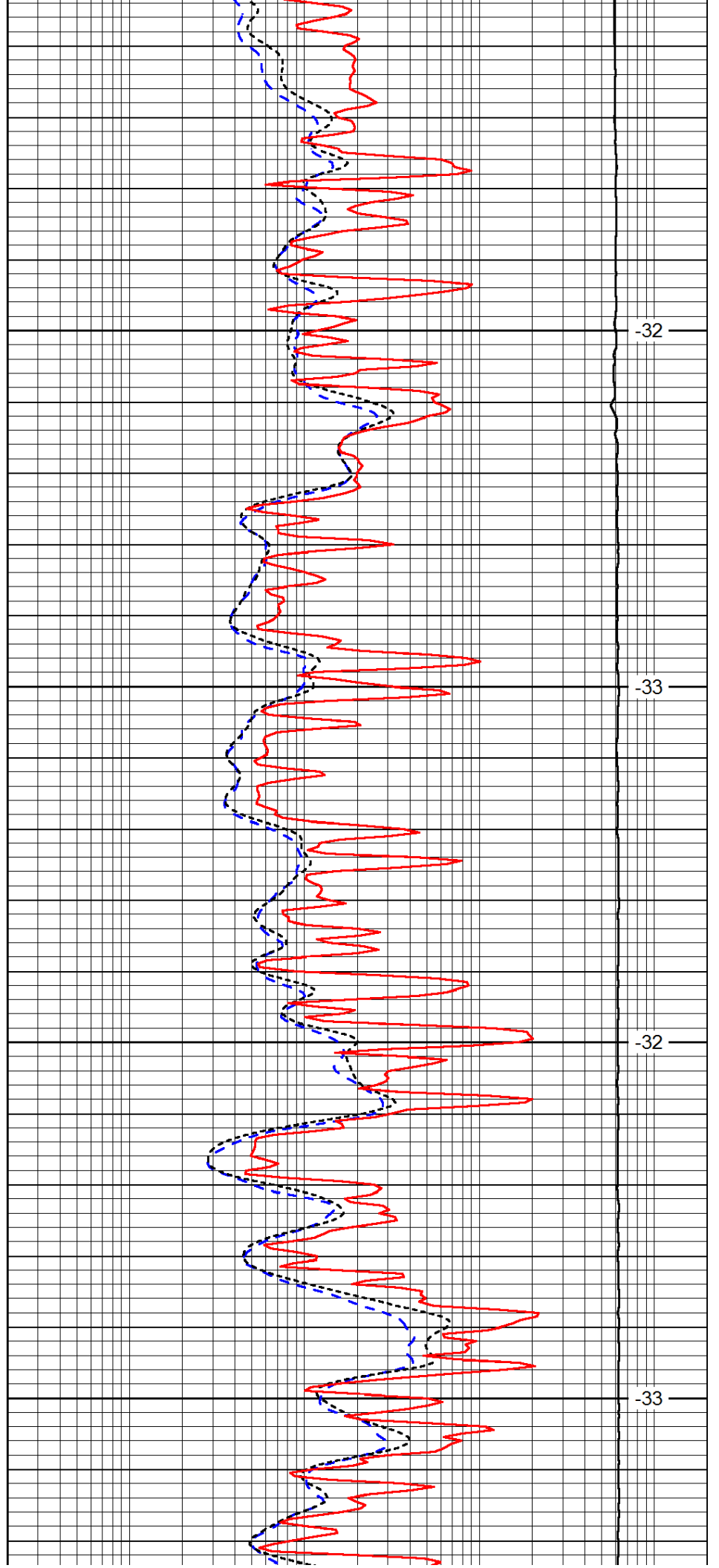


4650

4700

4750

4800

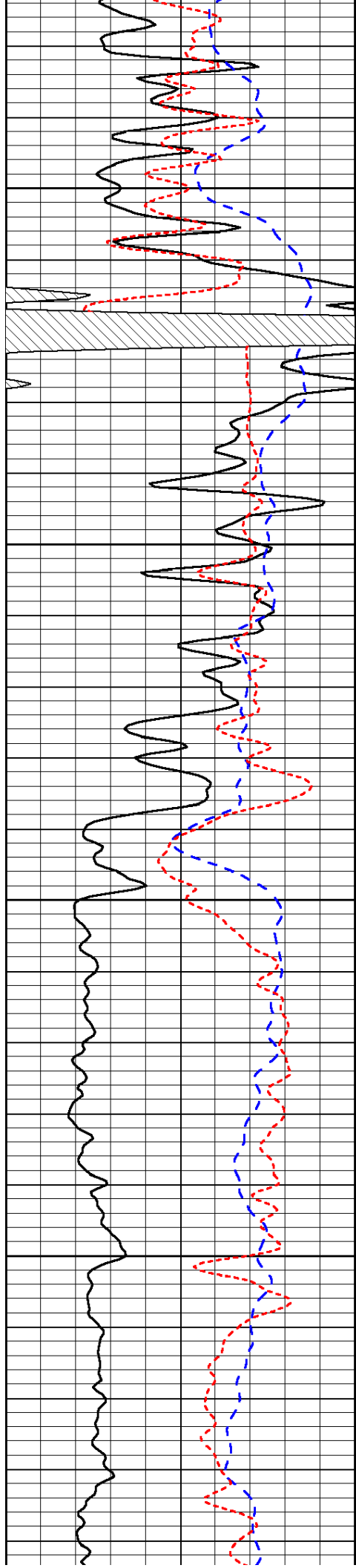


-32

-33

-32

-33

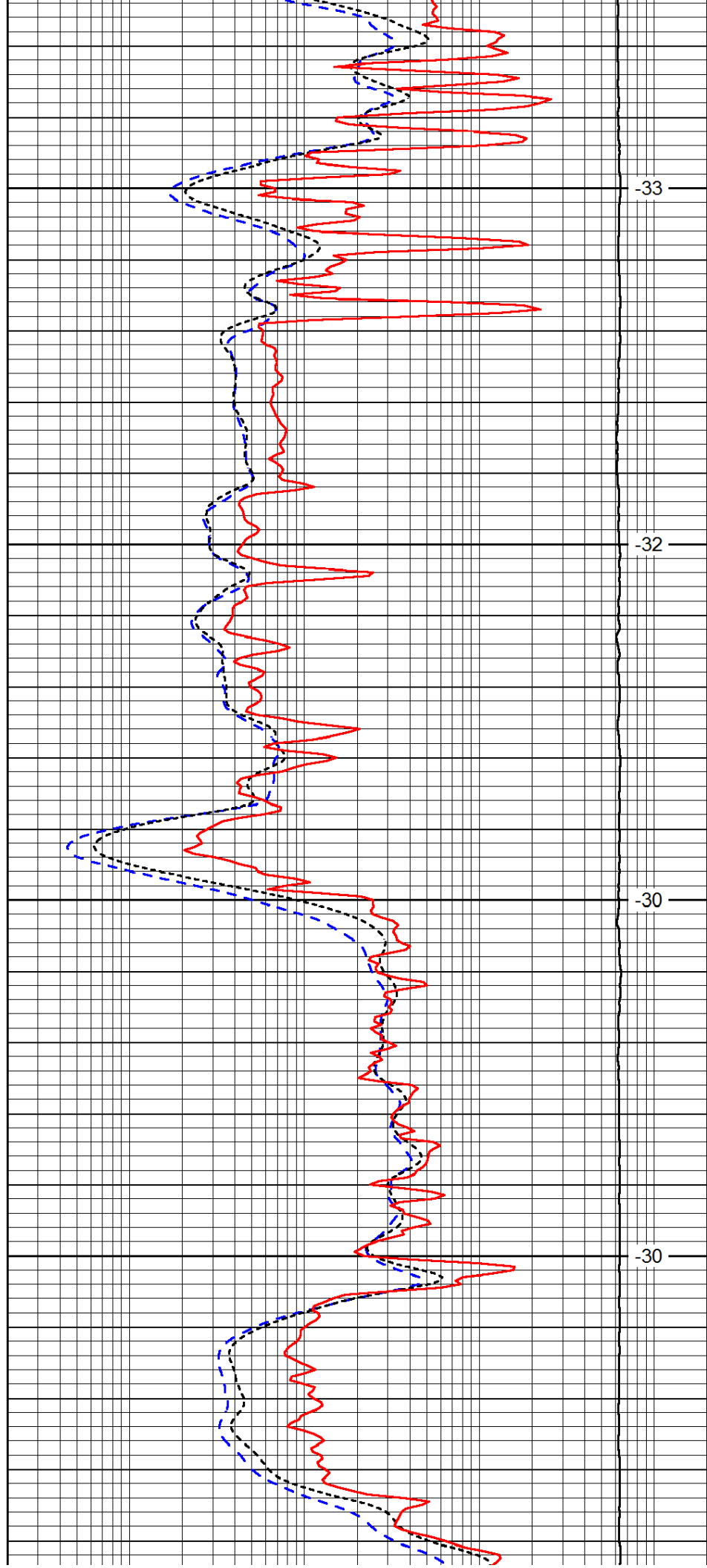


4850

4900

4950

5000

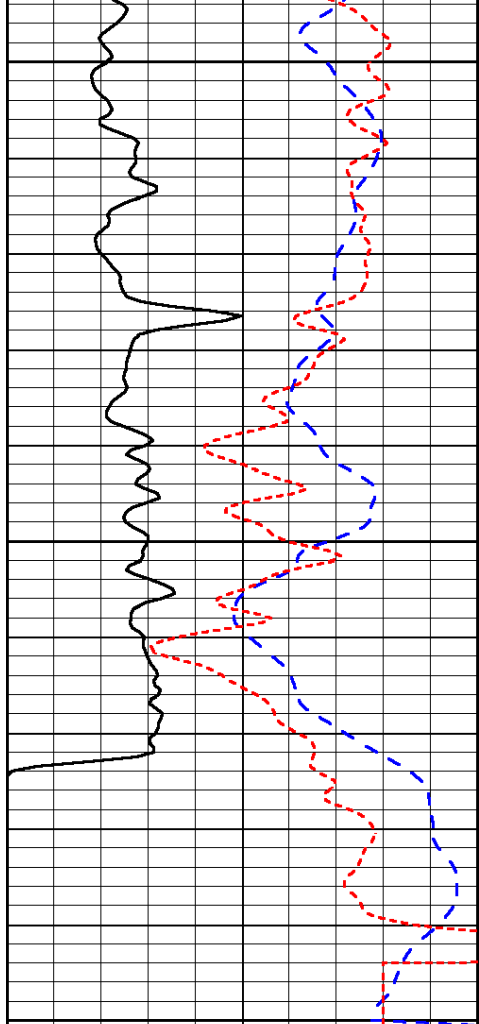


-33

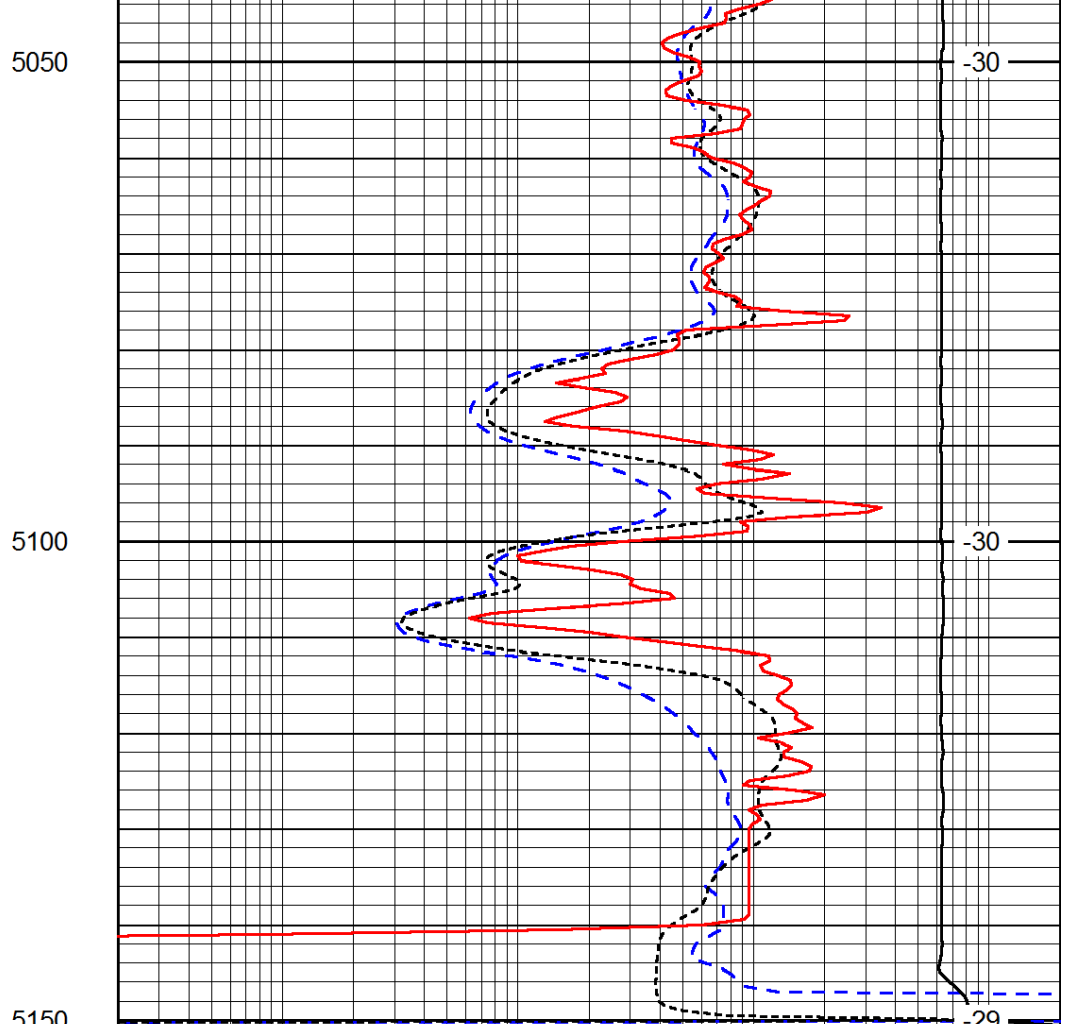
-32

-30

-30



0	Gamma Ray	150
-200	SP (mV)	0
-160	Rxo / Rt	40



0.2	Deep Resistivity	2000
0.2	Medium Resistivity	2000
0.2	Shallow Resistivity	2000
15000	Line Tension	0

LSPD