



DIGITAL LOG (785) 625-3858

Microresistivity
Log

15-203-20,181-00-00

API No.

Company **Raymond Oil Company, Inc.**
Well **Horton-Smith No. 1**
Field **Wildcat**
County **Wichita** State **Kansas**

Location **S2 N2 N2 N2
335' FNL & 2,640' FEL**

Sec: **19** Twp: **20S** Rge: **35W**

Permanent Datum **Ground Level** Elevation **3188**
Log Measured From **Kelly Bushing** 11 Ft. Above Perm. Datum
Drilling Measured From **Kelly Bushing**

Other Services
CNL/CDL
DIL

Elevation
K.B. 3199
D.F.
G.L. 3188

Date	6/3/2012
Run Number	Two
Depth Driller	5141
Depth Logger	5145
Bottom Logged Interval	5144
Top Log Interval	3400
Casing Driller	8.625 @ 279
Casing Logger	276
Bit Size	7.875
Type Fluid in Hole	Chemical
Salinity,ppm CL	8000
Density / Viscosity	9.4 68
pH / Fluid Loss	9.0 9.6
Source of Sample	Flowline
Rm @ Meas. Temp	.54 @ 72
Rmf @ Meas. Temp	.41 @ 72
Rmc @ Meas. Temp	.73 @ 72
Source of Rmf / Rmc	Charts
Rm @ BHT	.31 @ 127
Operating Rig Time	4 Hours
Max Rec. Temp. F	127
Equipment Number	108
Location	Hays
Recorded By	J. Long
Witnessed By	Max Lovely

<<< Fold Here >>>

All interpretations are opinions based on inferences from electrical or other measurements and we cannot and do not guarantee the accuracy or correctness of any interpretation, and we shall not, except in the case of gross or willful negligence on our part, be liable or responsible for any loss, costs, damages, or expenses incurred or sustained by anyone resulting from any interpretation made by any of our officers, agents or employees. These interpretations are also subject to our general terms and conditions set out in our current Price Schedule.

Comments

Thank you for using Log-Tech, Inc.
(785) 625-3858

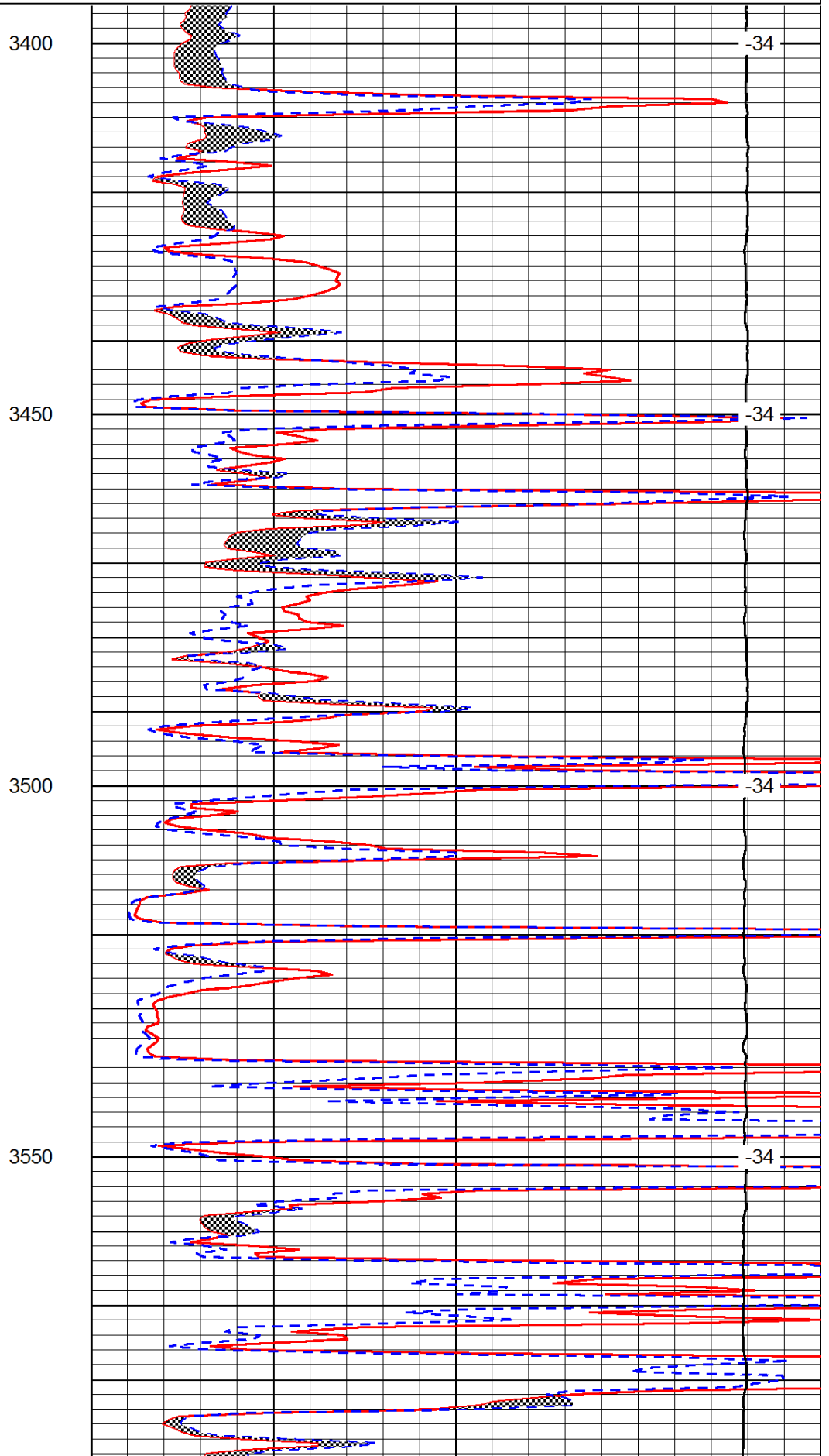
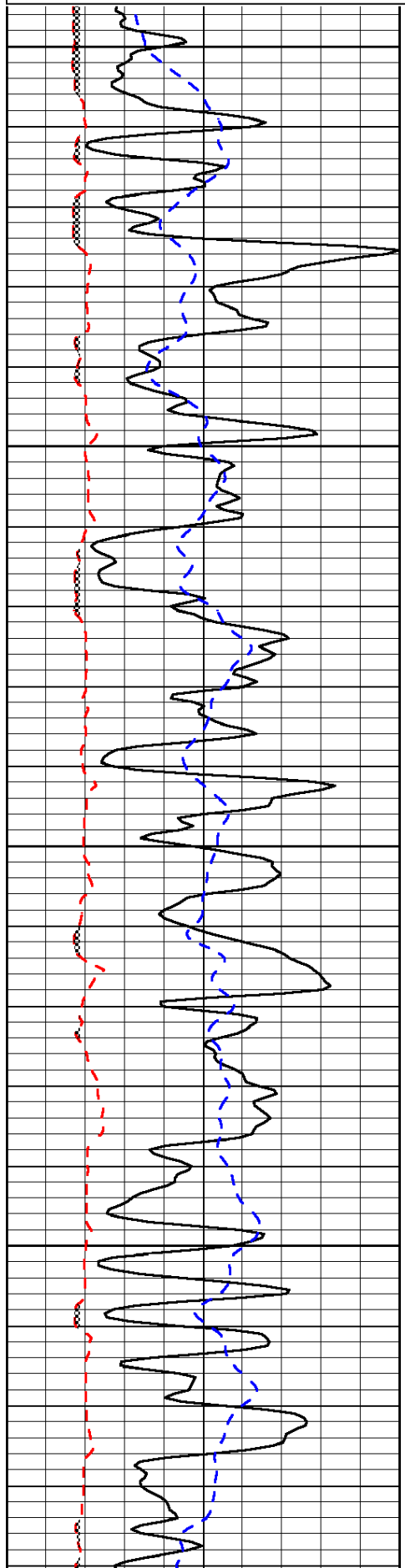
Marienthal, 1/2 West to County Road 20, 11 South to T, 2 West, 2 South, 1 1/2 East, North Into

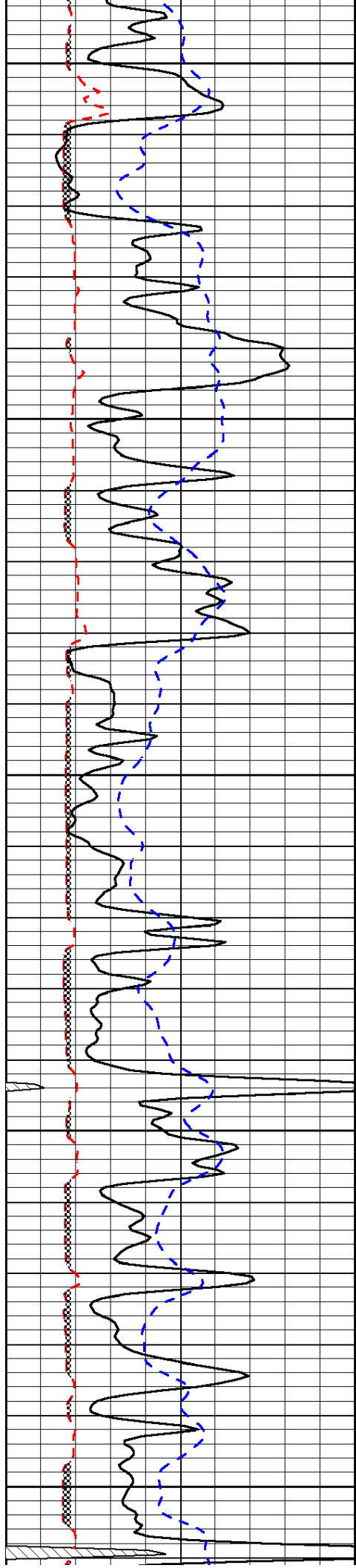
Database File: c:\warrior\data\raymond_horton-smith no. 1\raymondoil_horton-smith_1hd.db
Dataset Pathname: dil/raystck
Presentation Format: micro
Dataset Creation: Sun Jun 03 13:12:38 2012
Charted by: Depth in Feet scaled 1:240

0	Gamma Ray	150
6	Micro Log Caliper (GAPI)	16
-200	SP (mV)	0

0	Micro Inverse 1 X 1	40
0	Micro Normal 2"	40
15000	Line Weight	0

LSPD





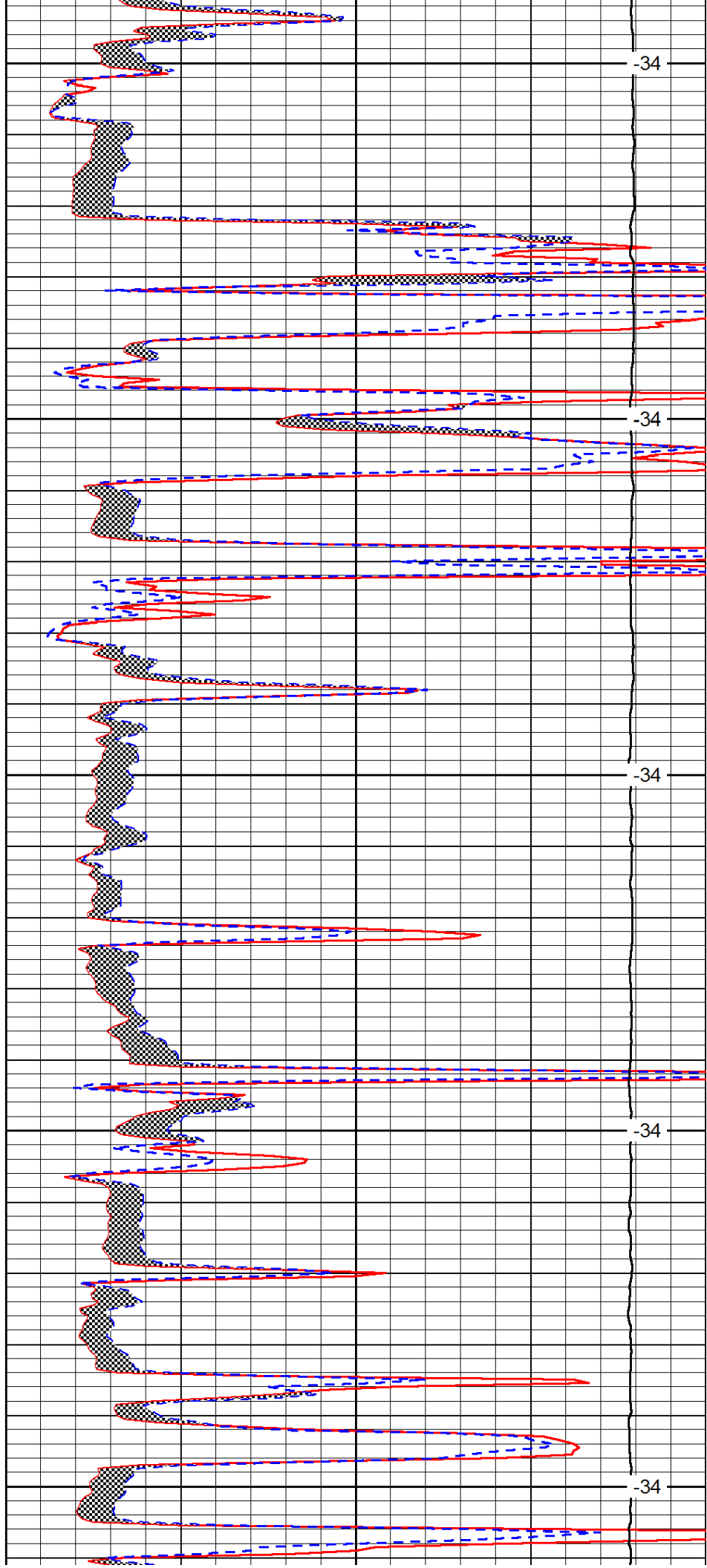
3600

3650

3700

3750

3800



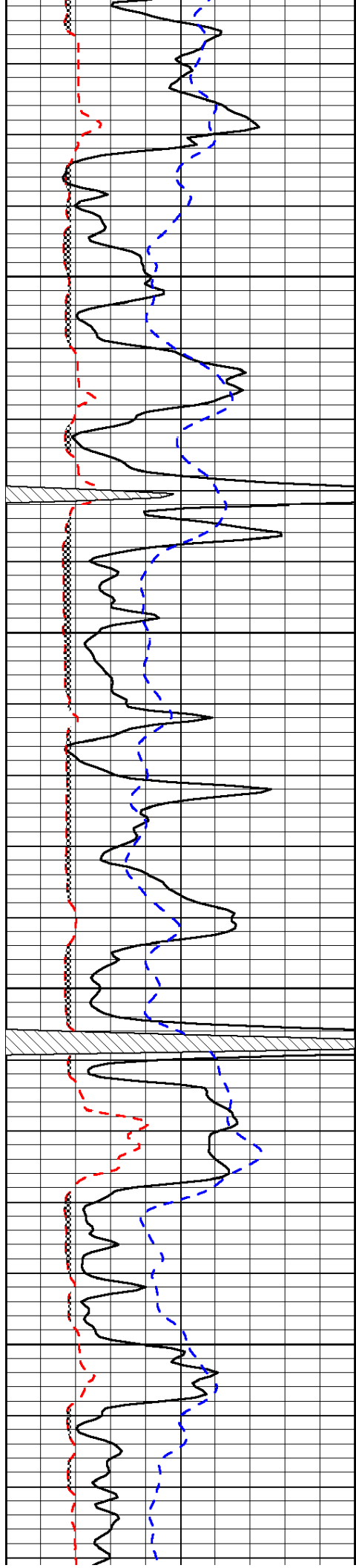
-34

-34

-34

-34

-34

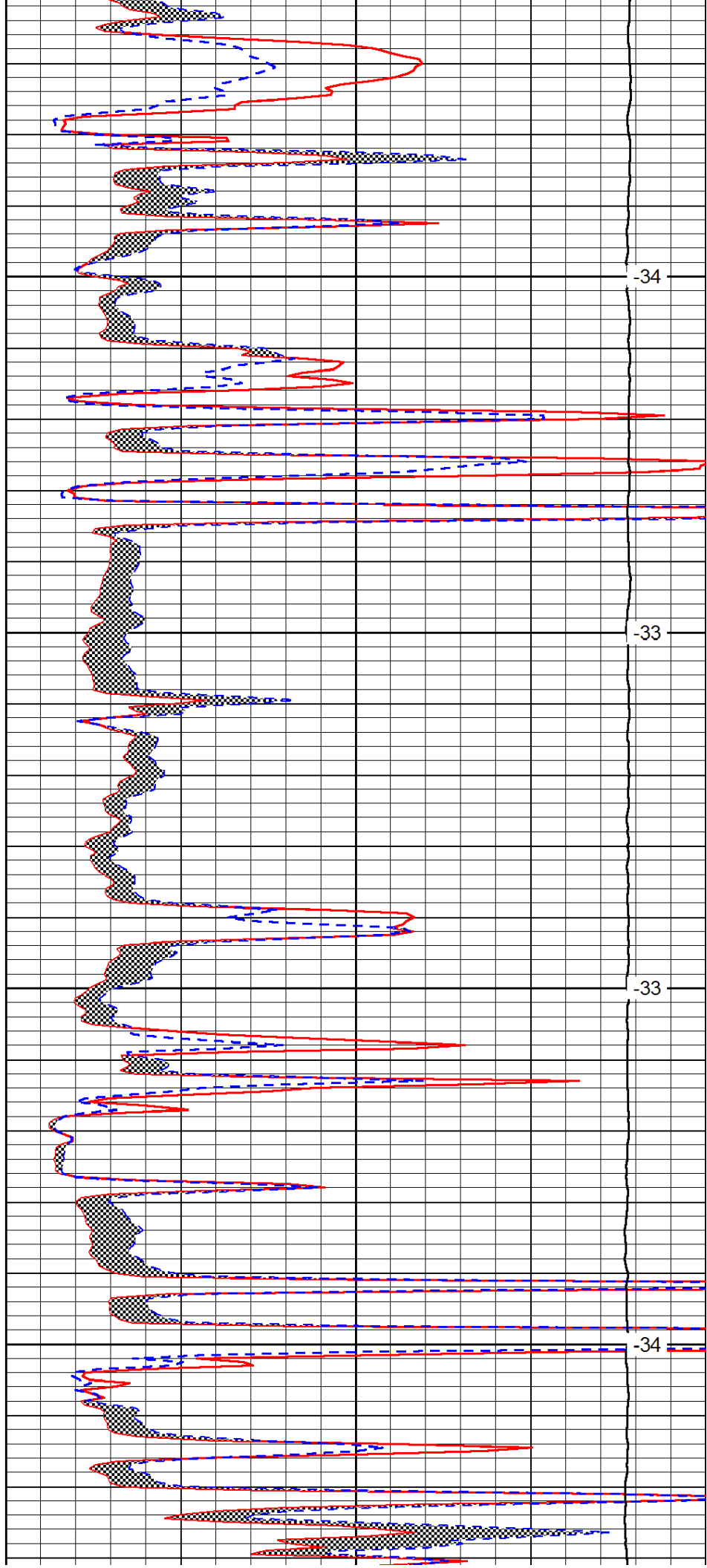


3850

3900

3950

4000

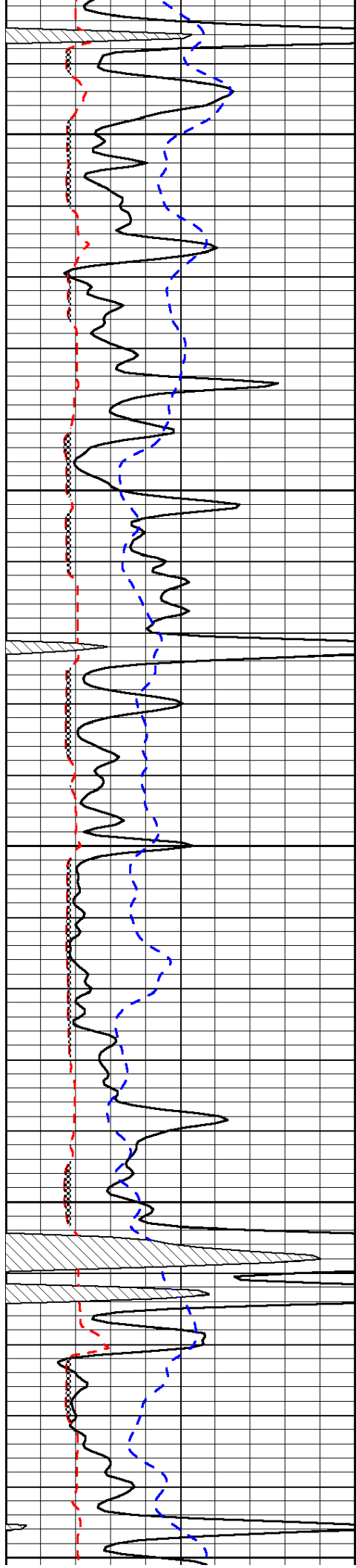


-34

-33

-33

-34



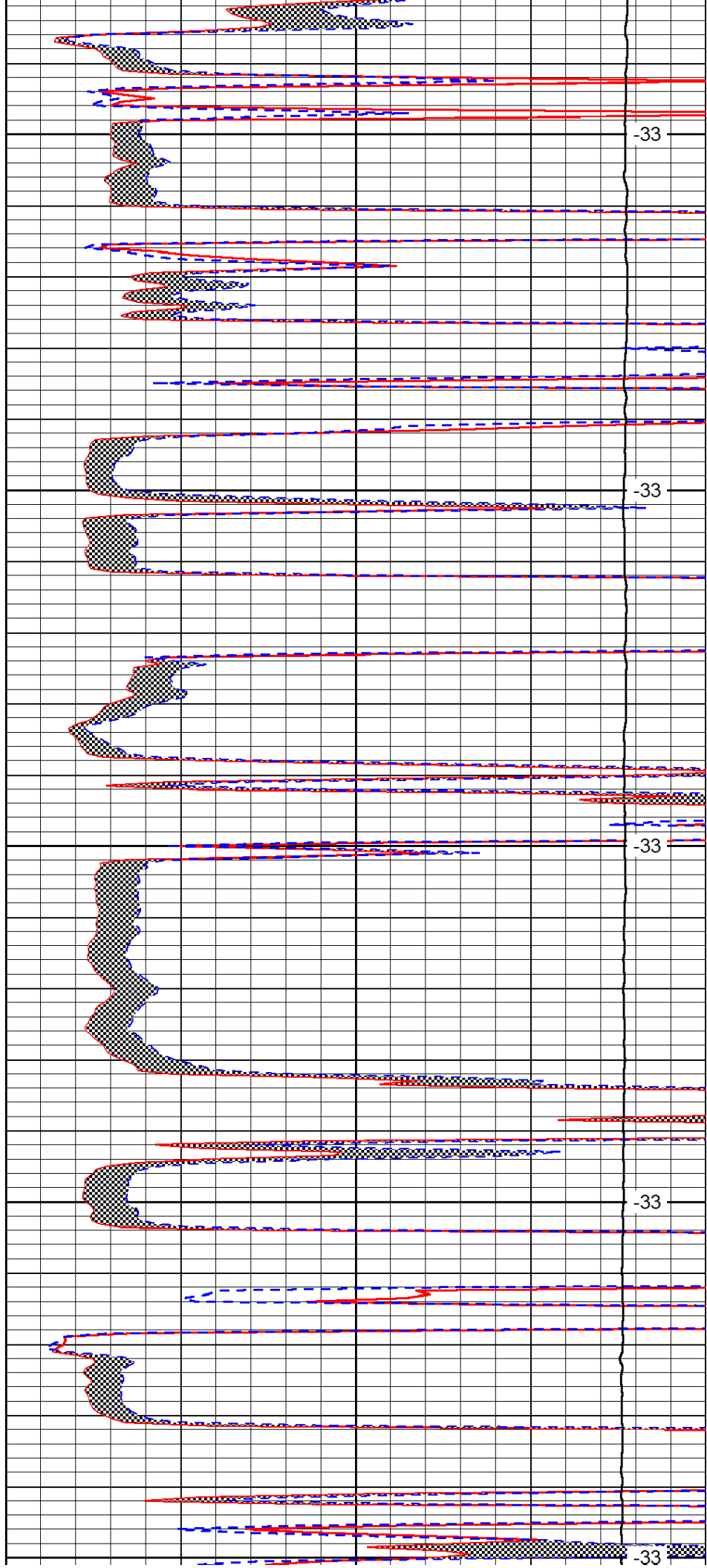
4050

4100

4150

4200

4250



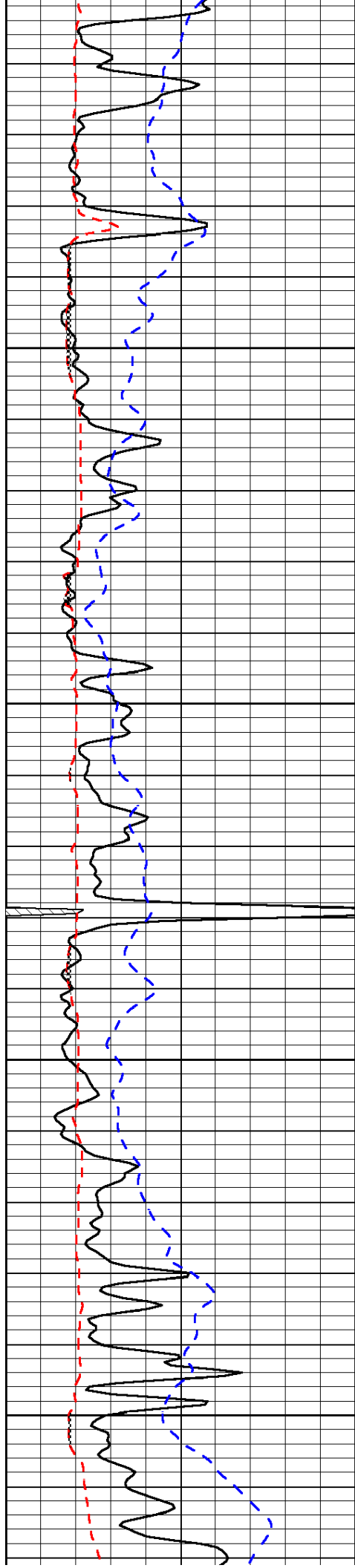
-33

-33

-33

-33

-33

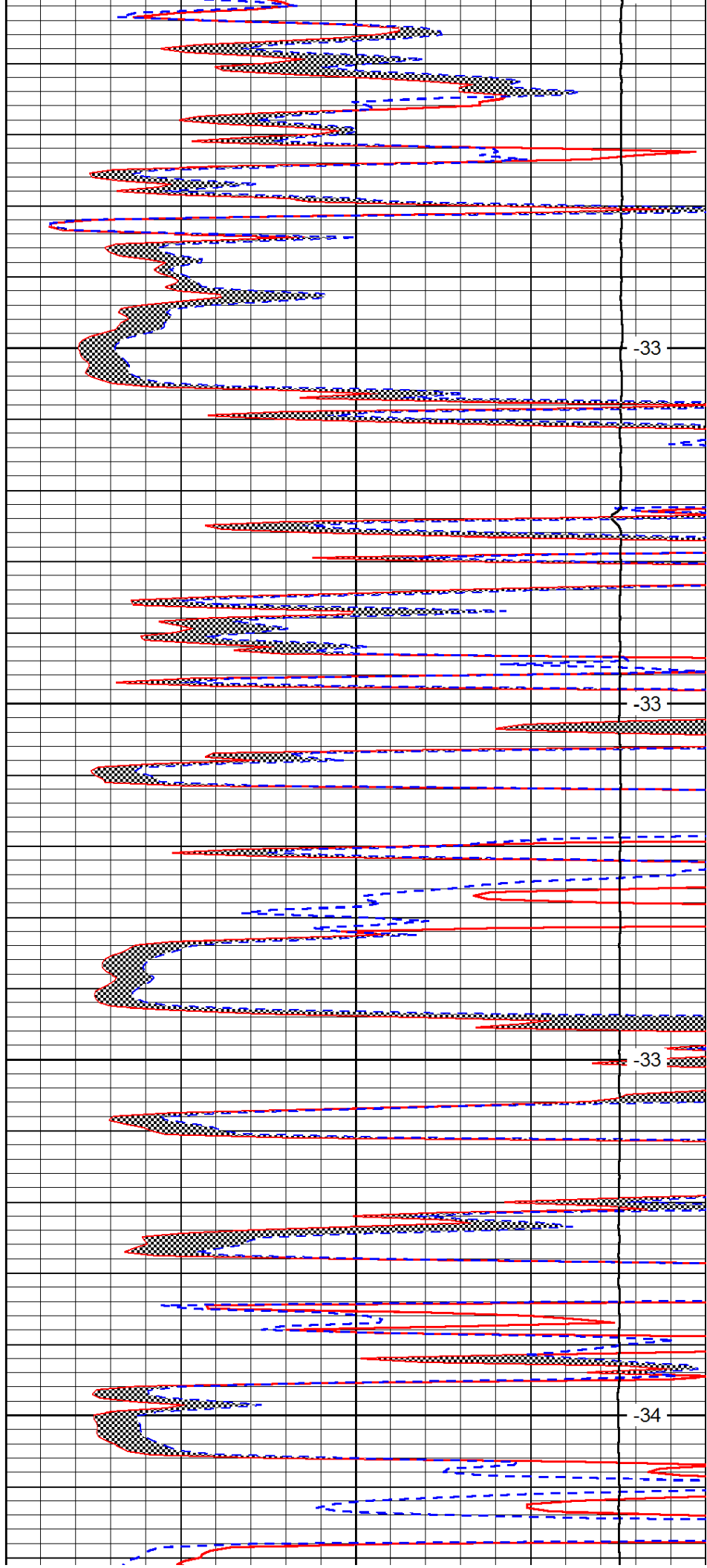


4300

4350

4400

4450

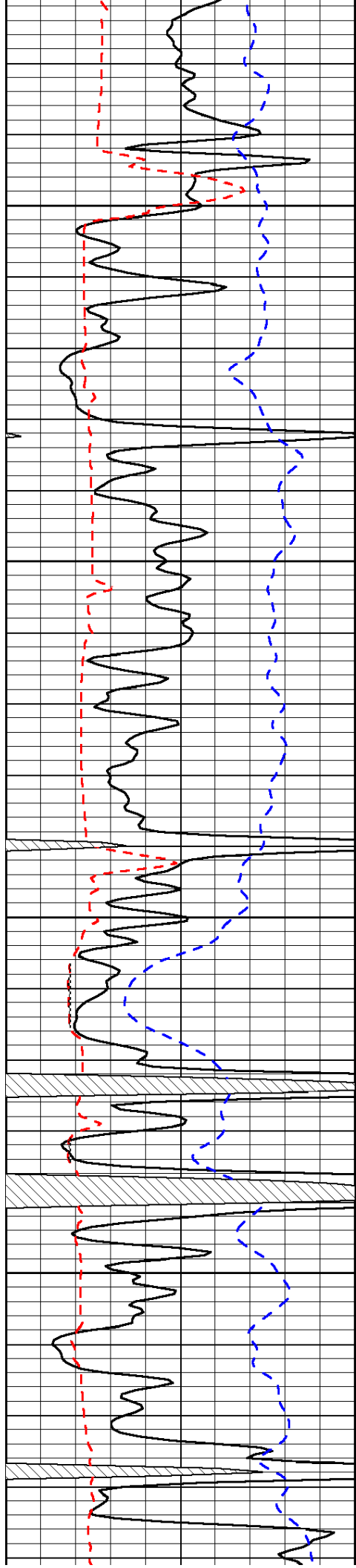


-33

-33

-33

-34

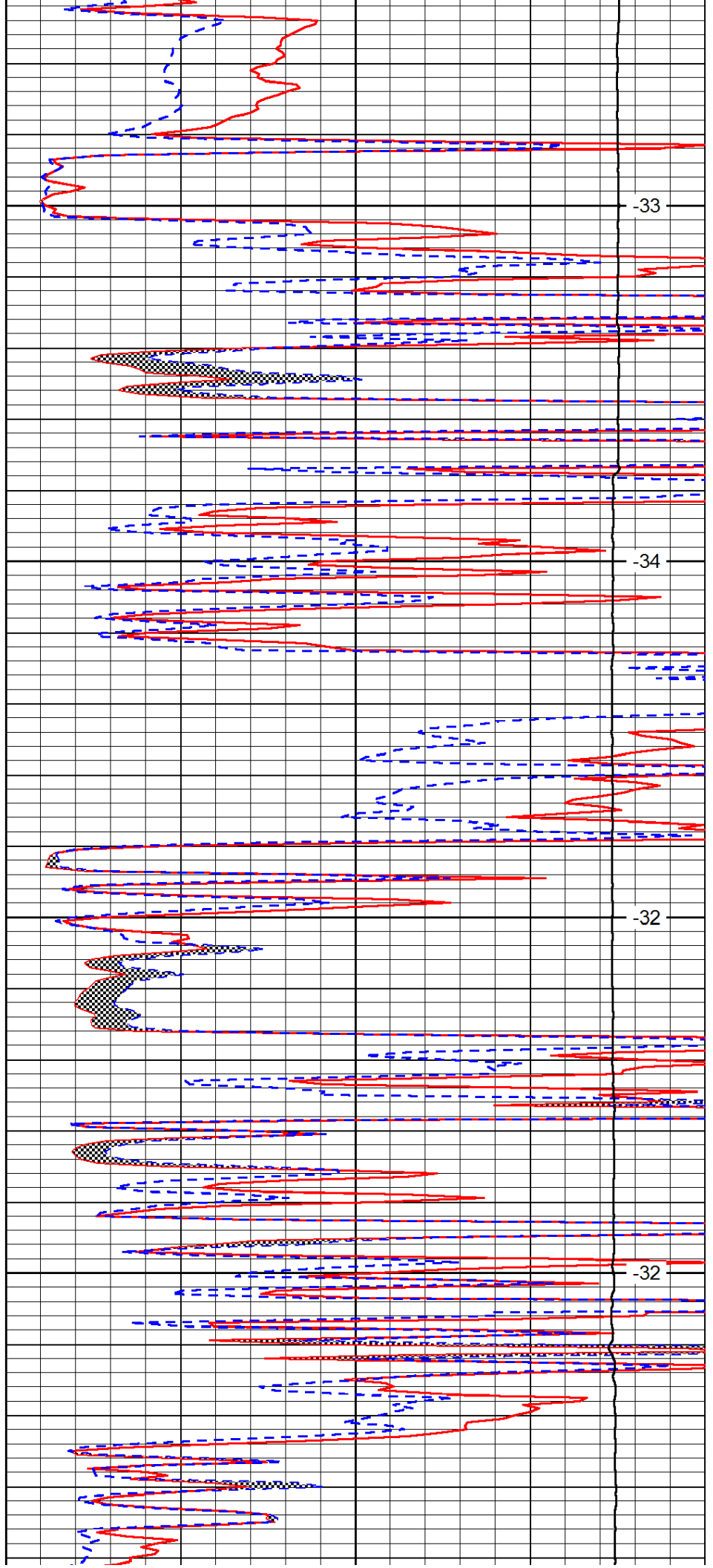


4500

4550

4600

4650

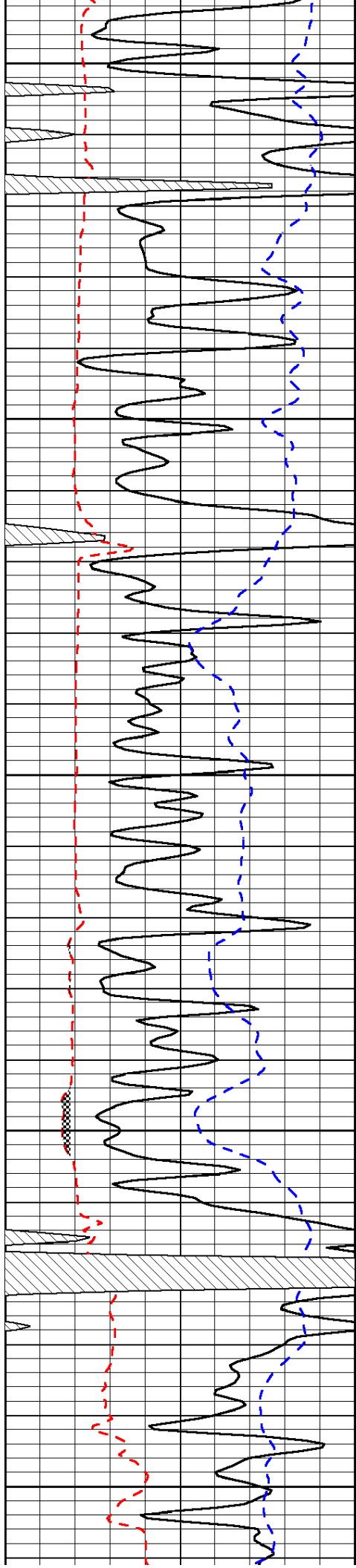


-33

-34

-32

-32



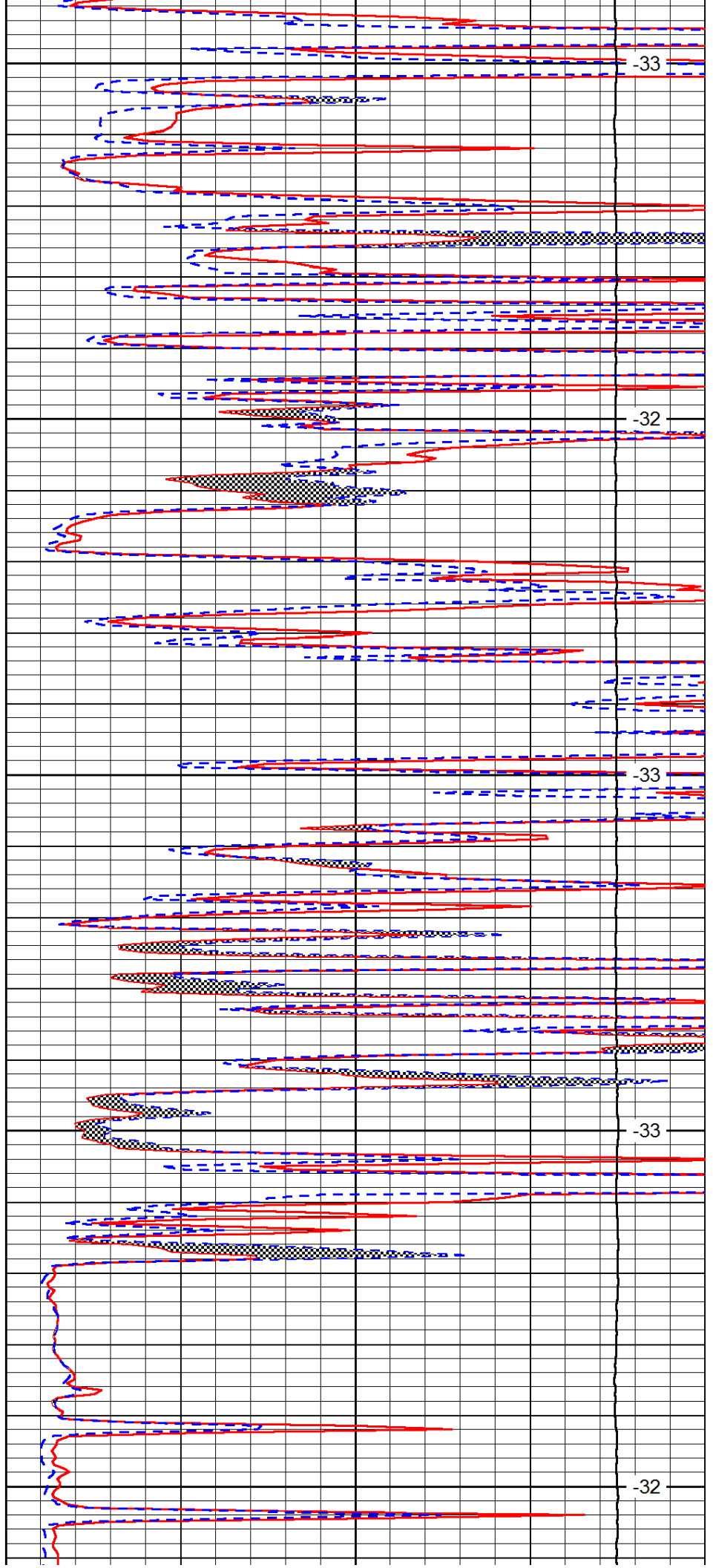
4700

4750

4800

4850

4900



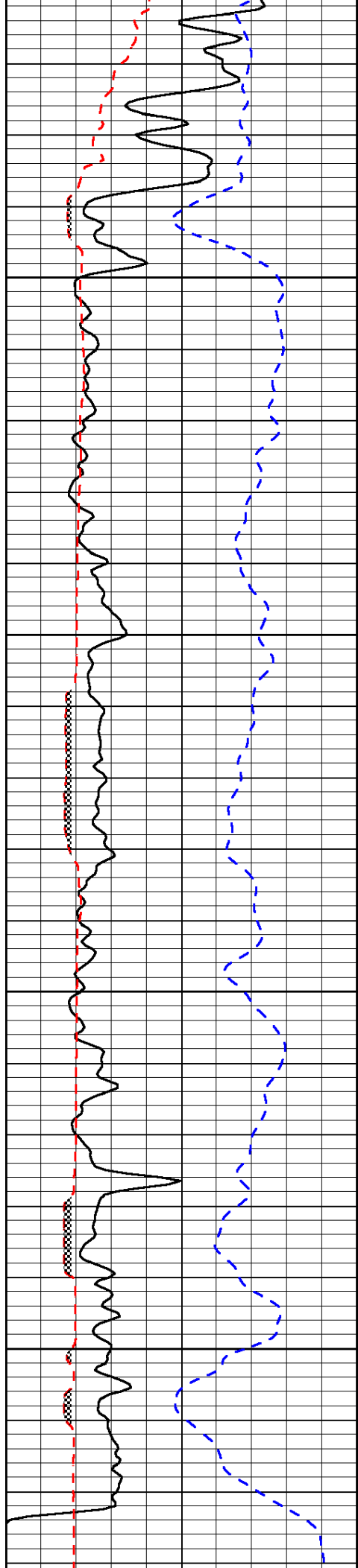
-33

-32

-33

-33

-32

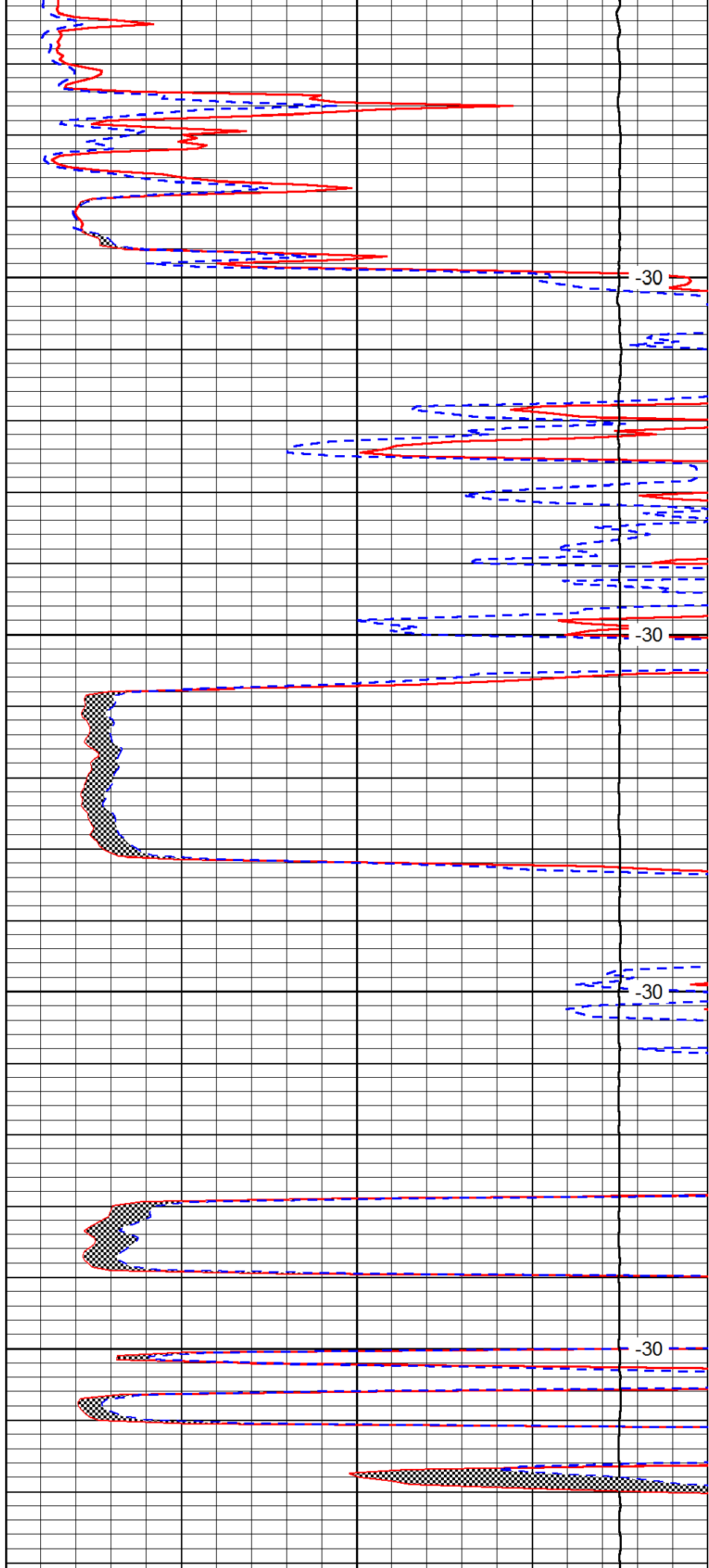


4950

5000

5050

5100

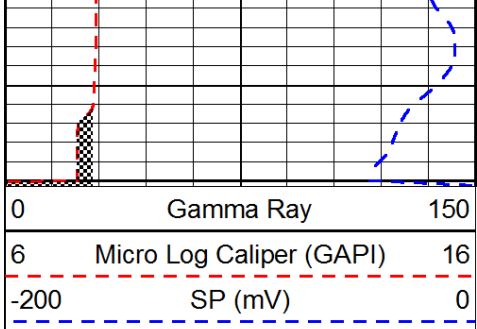


-30

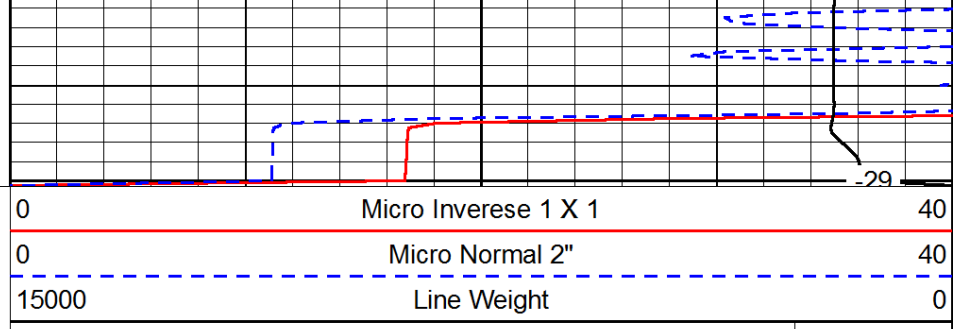
-30

-30

-30



5150



-29

LSPD