



DIGITAL LOG (785) 625-3858

Dual Compensated Porosity Log

15-203-20,181-00-00

API No. 15-203-20,181-00-00

Company Raymond Oil Company, Inc.
 Well Horton-Smith No. 1
 Field Wildcat
 County Wichita
 State Kansas

Location S2 N2 N2 N2
 335' FNL & 2,640' FEL

Sec: 19 Twp: 20S Rge: 35W

Permanent Datum Ground Level Elevation 3188
 Log Measured From Kelly Bushing 11 Ft. Above Perm. Datum
 Drilling Measured From Kelly Bushing

Other Services
 DIL
 MEL

Elevation
 K.B. 3199
 D.F.
 G.L. 3188

Date	6/3/2012					
Run Number	One					
Type Log	CNL / CDL					
Depth Driller	5141					
Depth Logger	5145					
Bottom Logged Interval	5124					
Top Logged Interval	3400					
Type Fluid In Hole	Chemical					
Salinity, PPM CL	8000					
Density Level	9.4					
Level	Full					
Max. Rec. Temp. F	127					
Operating Rig Time	4 Hours					
Equipment -- Location	108 Hays					
Recorded By	J. Long					
Witnessed By	Max Lovley					
Borehole Record			Casing Record			
Run No.	Bit	From	To	Size	Wgt.	To
1	12.25	00	279	8.625	24#	279
2	7.875	279	5141			

<<< Fold Here >>>

All interpretations are opinions based on inferences from electrical or other measurements and we cannot and do not guarantee the accuracy or correctness of any interpretation, and we shall not, except in the case of gross or willful negligence on our part, be liable or responsible for any loss, costs, damages, or expenses incurred or sustained by anyone resulting from any interpretation made by any of our officers, agents or employees. These interpretations are also subject to our general terms and conditions set out in our current Price Schedule.

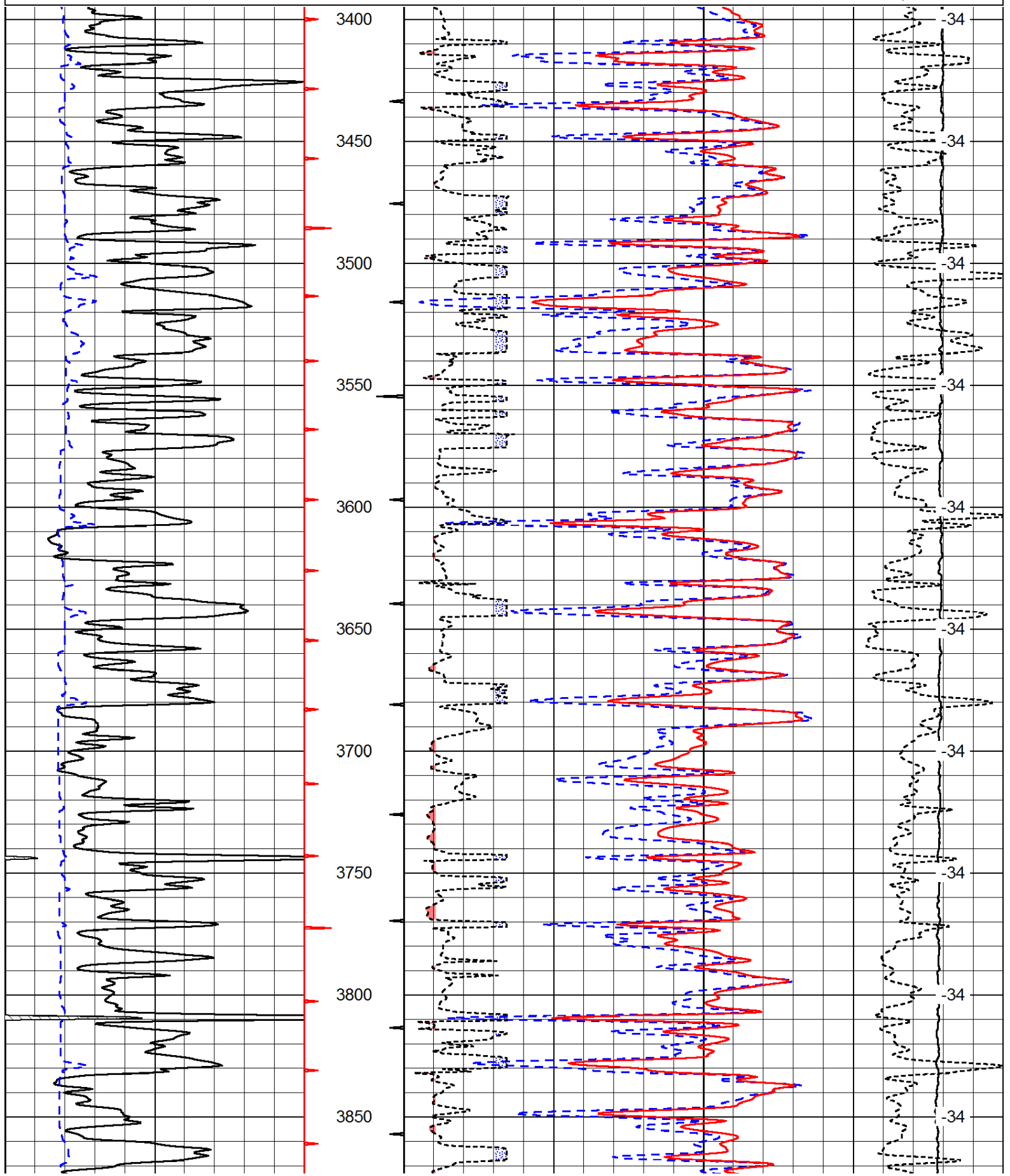
Comments

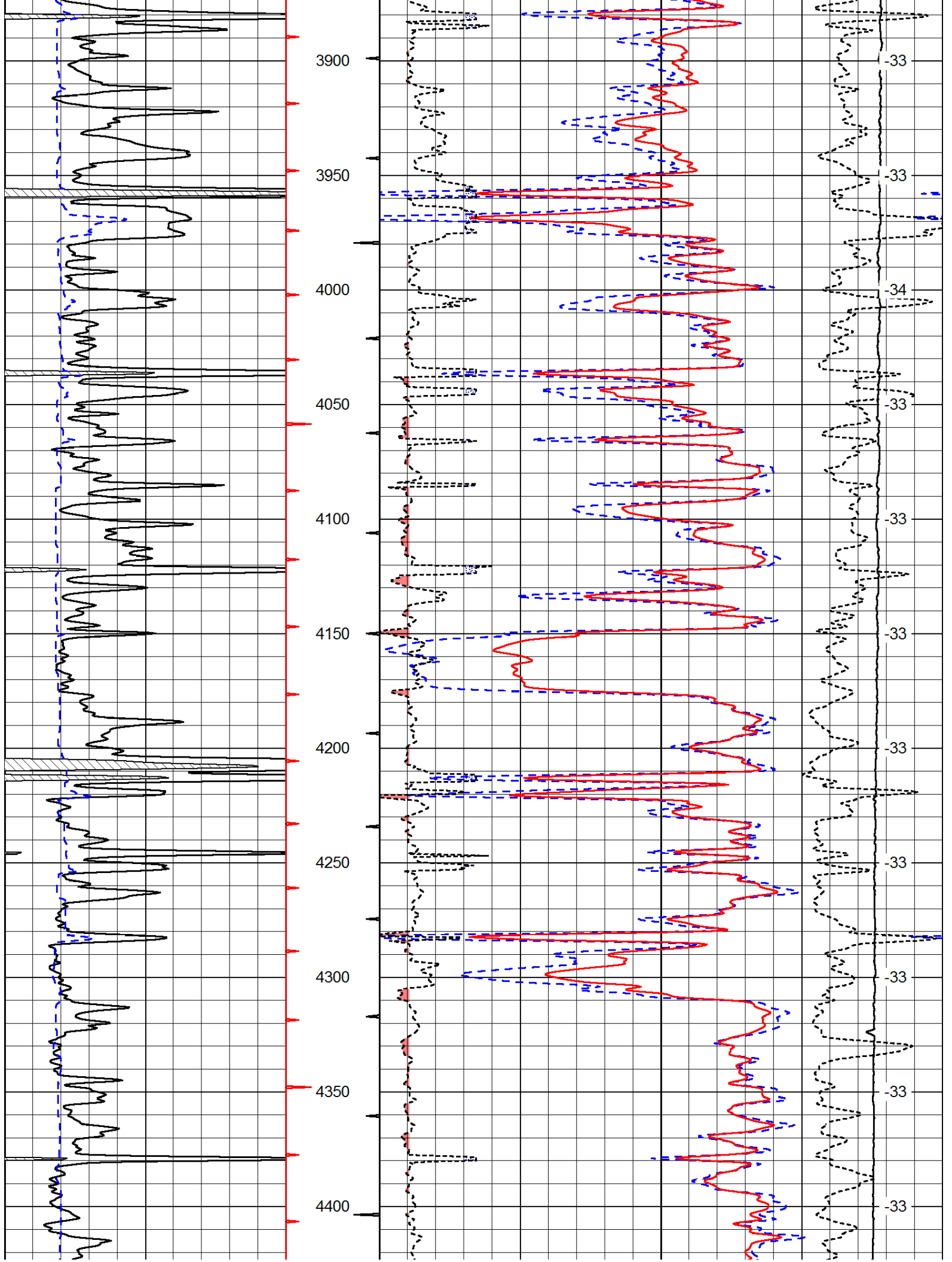
Thank you for using Log-Tech, Inc.
 (785) 625-3858

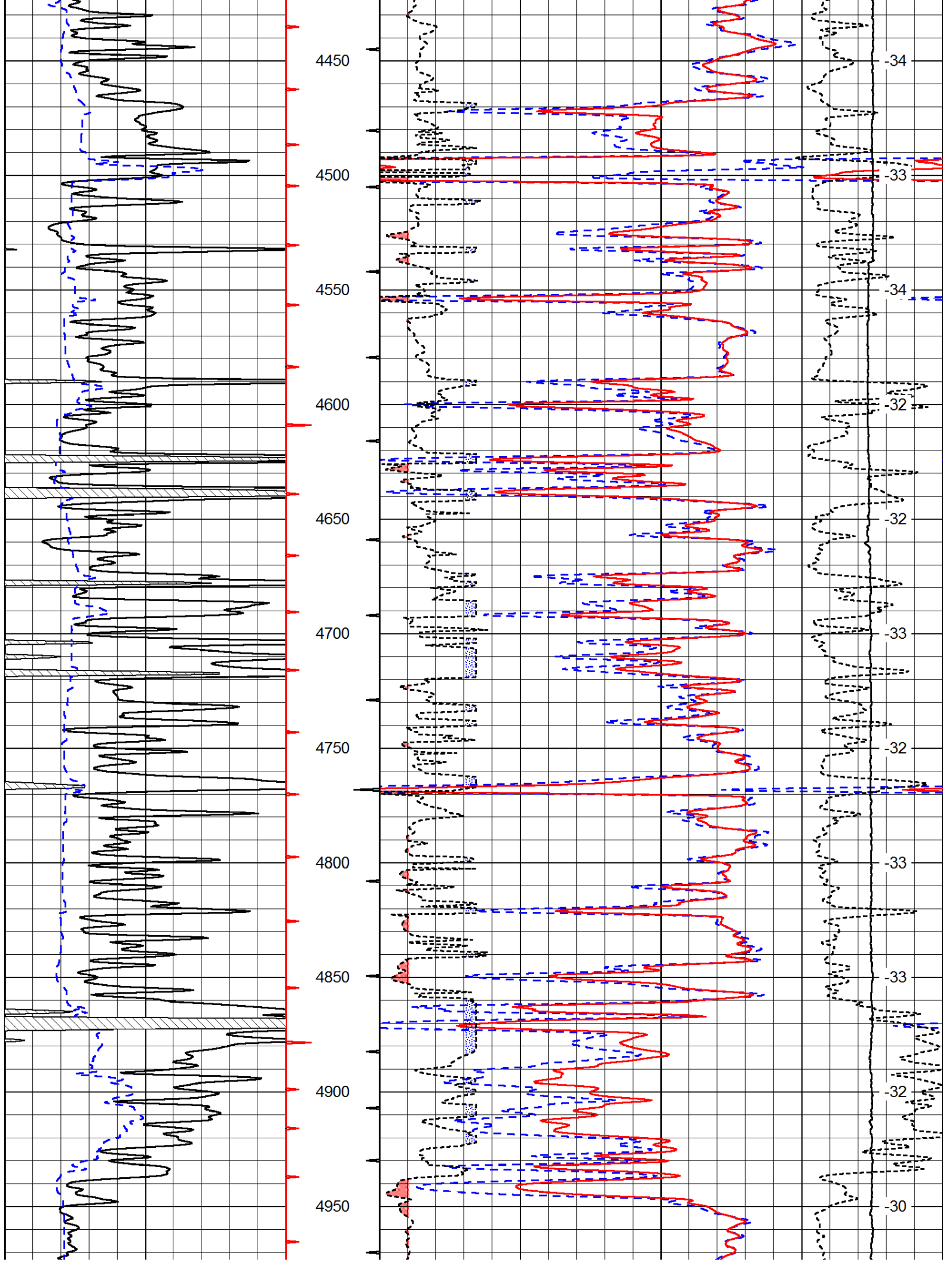
Marienthal, 1/2 West to County Road 20, 11 South to T, 2 West, 2 South, 1 1/2 East, North Into

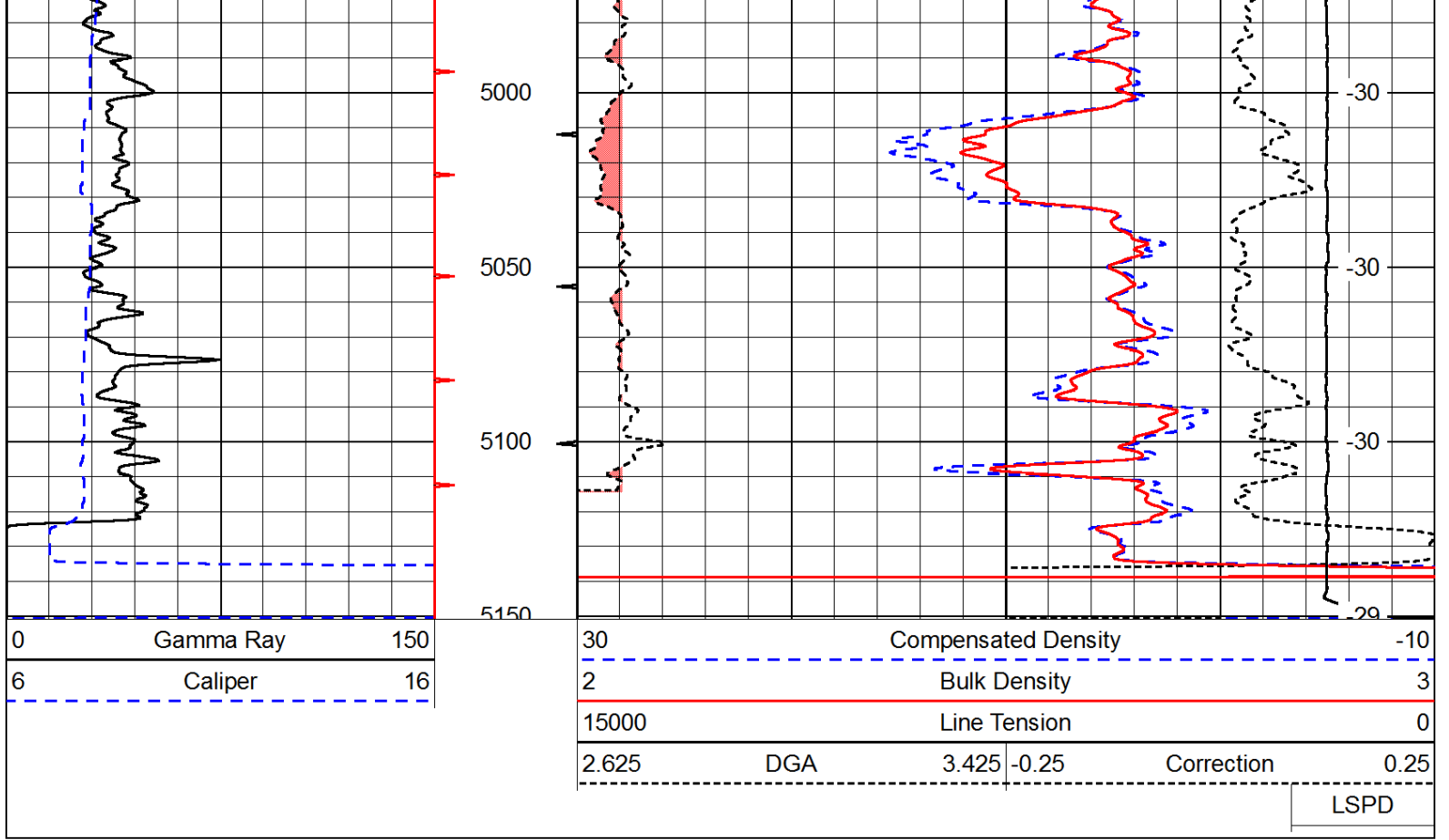
0	Gamma Ray	150
6	Caliper	16

30	Compensated Density		-10
2	Bulk Density		3
15000	Line Tension		0
2.625	DGA	3.425 -0.25	Correction 0.25
LSPD			









Database File: c:\warrior\data\raymond_horton-smith no. 1\raymondoil_horton-smith_1hd.db
 Dataset Pathname: dil/raystck
 Presentation Format: cndlspec
 Dataset Creation: Sun Jun 03 13:12:38 2012
 Charted by: Depth in Feet scaled 1:240

