



DIGITAL LOG (785) 625-3858

Dual Compensated Porosity Log

15-109-21,080-00-00

API No. 15-109-21,080-00-00

Company Brito Oil Company, Inc.  
 Well Fairleigh "D" #1-7  
 Field Wildcat  
 County Logan State Kansas

Location 945' FSL & 2082' FWL

Sec: 7 Twp: 15 S Rge: 32 W

Other Services  
 DIL  
 MEL

Permanent Datum Ground Level Elevation 2731  
 Log Measured From Kelly Bushing 5 Ft. Above Perm. Datum  
 Drilling Measured From Kelly Bushing

Elevation  
 K.B. 2736  
 D.F.  
 G.L. 2731

Date	5/04/2012						
Run Number	One						
Type Log	CNL / CDL						
Depth Driller	4470						
Depth Logger	4469						
Bottom Logged Interval	4448						
Top Logged Interval	3400						
Type Fluid In Hole	Chemical						
Salinity, PPM CL	4,400						
Density	9.1						
Level	Full						
Max. Rec. Temp. F	123						
Operating Rig Time	4 1/2 Hours						
Equipment -- Location	91 Hays						
Recorded By	K. Bange						
Witnessed By	Phil Askey						
Borehole Record							
Run No.	Bit	From	To	Size	Wgt.	From	To
1	12.25	00	219	8.625	24#	00	219
2	7.875	219	4470				
Casing Record							

<<< Fold Here >>>

All interpretations are opinions based on inferences from electrical or other measurements and we cannot and do not guarantee the accuracy or correctness of any interpretation, and we shall not, except in the case of gross or willful negligence on our part, be liable or responsible for any loss, costs, damages, or expenses incurred or sustained by anyone resulting from any interpretation made by any of our officers, agents or employees. These interpretations are also subject to our general terms and conditions set out in our current Price Schedule.

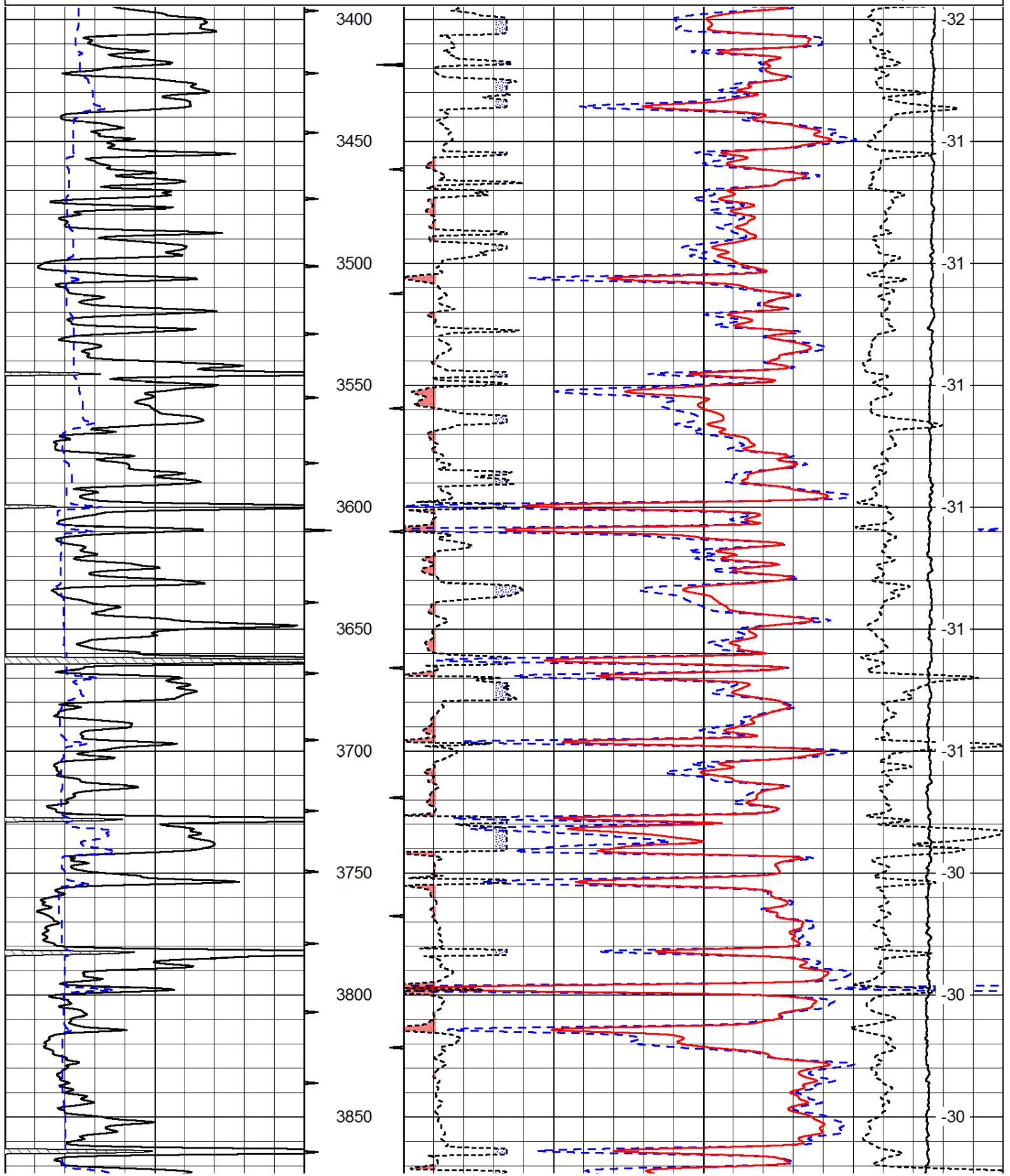
Comments

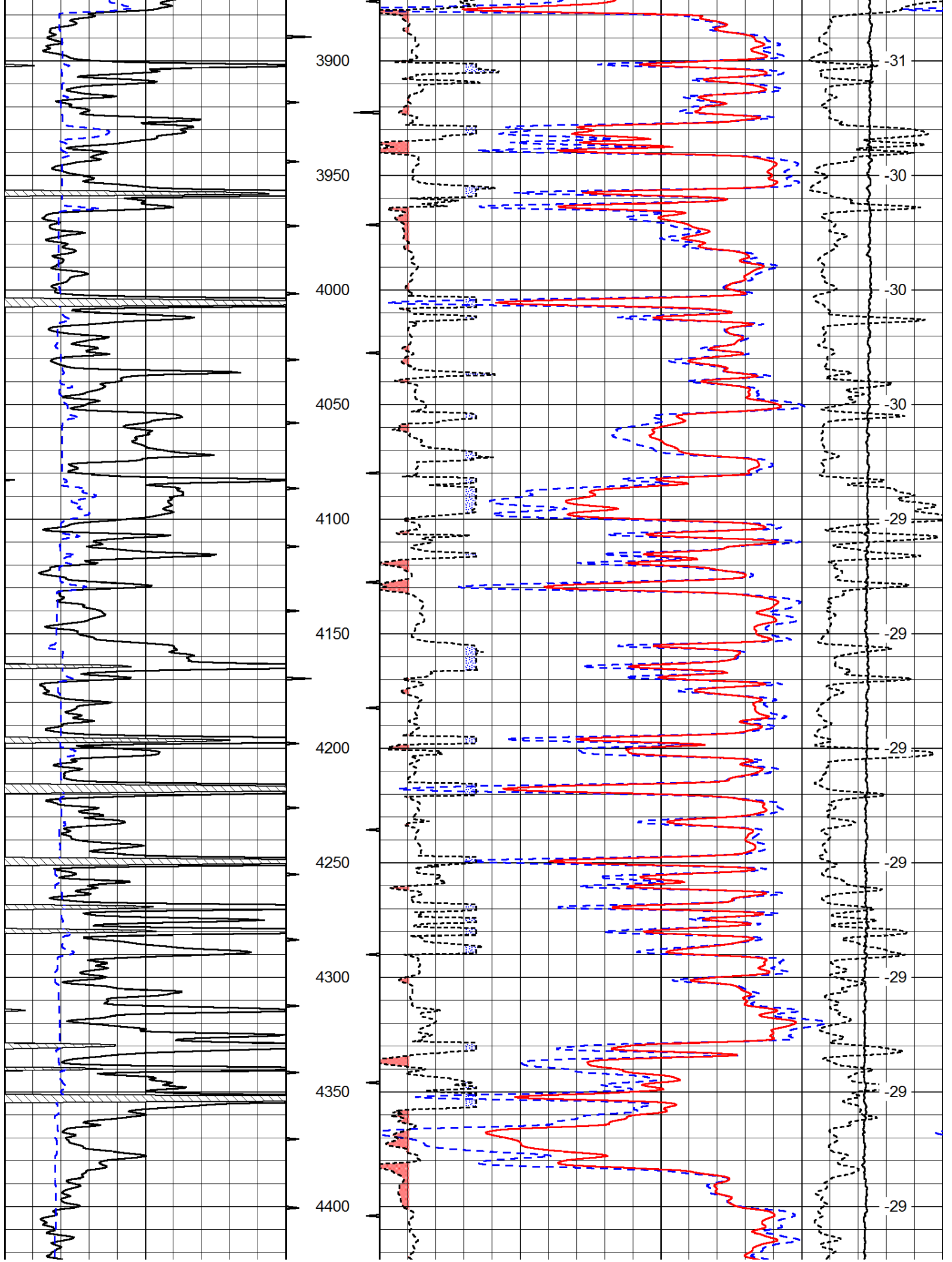
Thank you for using Log-Tech, Inc.  
 (785) 625-3858  
 Oakley, 23 S to Gold rd (across river),  
 4 1/2 W to T intersection,  
 1 1/2 S to Tank Bat.,  
 1 1/2 E (through red gate, across 2 cattle guards),  
 S into

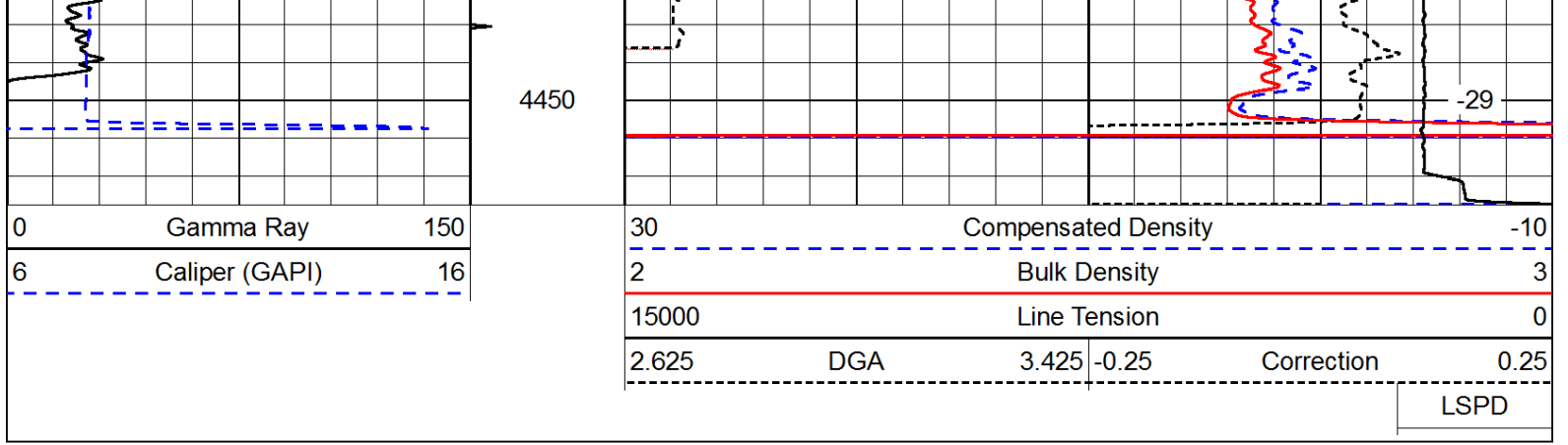
Database File: c:\warrior\data\brito\_fairleigh d #1-7\brito050412hd.db  
 Dataset Pathname: dil/britostk  
 Presentation Format: cdl  
 Dataset Creation: Fri May 04 22:29:23 2012  
 Charted by: Depth in Feet scaled 1:600

0	Gamma Ray	150
6	Caliper (GAPI)	16

30	Compensated Density		-10
2	Bulk Density		3
15000	Line Tension		0
2.625	DGA	3.425	-0.25
			Correction
			0.25
LSPD			







Database File: c:\warrior\data\brito\_fairleigh d #1-7\brito050412hd.db  
 Dataset Pathname: dil/britostk  
 Presentation Format: cndlspec  
 Dataset Creation: Fri May 04 22:29:23 2012  
 Charted by: Depth in Feet scaled 1:240

