



DIGITAL LOG (785) 625-3858

Dual Induction Log

15-109-21,080-00-00

API No.

Company Brito Oil Company, Inc.

Well Fairleigh "D" #1-7

Field Wildcat

County Logan State Kansas

Location 945' FSL & 2082' FWL

Sec: 7 Twp: 15 S Rge: 32 W

Permanant Datum Ground Level Elevation 2731

Log Measured From Kelly Bushing 5 Ft. Above Perm. Datum

Drilling Measured From Kelly Bushing

Other Services

CNL/CDL

MEL

Date 5/04/2012

Run Number One

Depth Driller 4470

Depth Logger 4469

Bottom Logged Interval 4468

Top Log Interval 200

Casing Driller 8.625 @ 219

Casing Logger 218

Bit Size 7.875

Type Fluid in Hole Chemical

Salinity,ppm CL 4,400

Density / Viscosity 9.1 58

pH / Fluid Loss 9.0 9.6

Source of Sample Flowline

Rm @ Meas. Temp .65 @ 75

Rmf @ Meas. Temp .49 @ 75

Rmc @ Meas. Temp .88 @ 75

Source of Rmf / Rmc Charts

Rm @ BHT .40 @ 123

Operating Rig Time 4 1/2 Hours

Max Rec. Temp. F 123

Equipment Number 91

Location Hays

Recorded By K. Bange

Witnessed By Phil Askey

<<< Fold Here >>>

All interpretations are opinions based on inferences from electrical or other measurements and we cannot and do not guarantee the accuracy or correctness of any interpretation, and we shall not, except in the case of gross or willful negligence on our part, be liable or responsible for any loss, costs, damages, or expenses incurred or sustained by anyone resulting from any interpretation made by any of our officers, agents or employees. These interpretations are also subject to our general terms and conditions set out in our current Price Schedule.

Comments

Thank you for using Log-Tech, Inc.
(785) 625-3858
Oakley, 23 S to Gold rd (across river),
4 1/2 W to T intersection,
1 1/2 S to Tank Bat.,
1 1/2 E (through red gate, across 2 cattle guards),
S into

Database File: c:\warrior\data\brito\_fairleigh d #1-7\brito050412hd.db
Dataset Pathname: dil/britostk
Presentation Format: dil2in
Dataset Creation: Fri May 04 22:29:23 2012
Charted by: Depth in Feet scaled 1:600

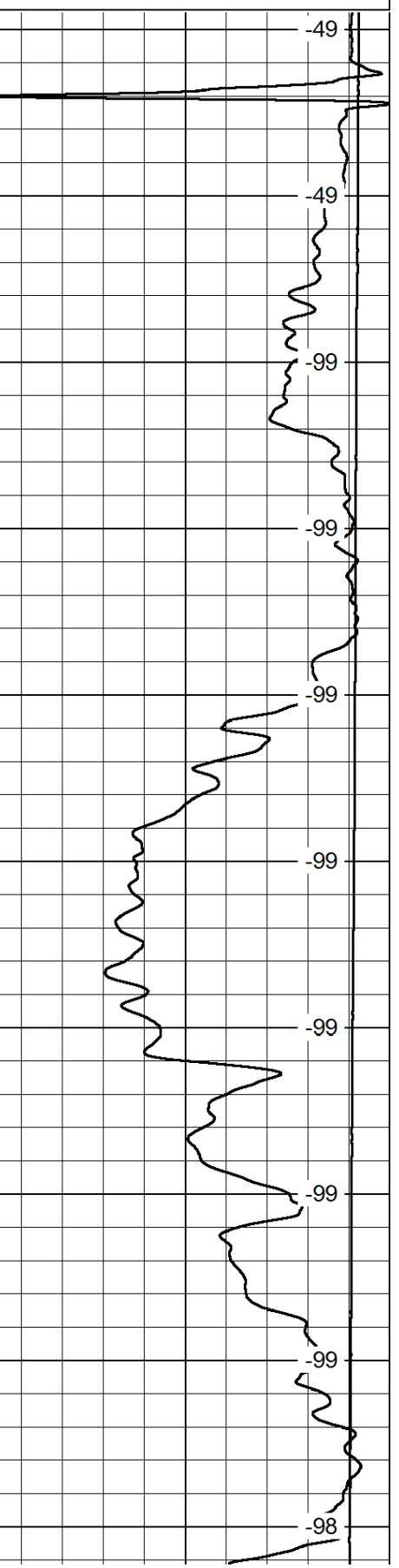
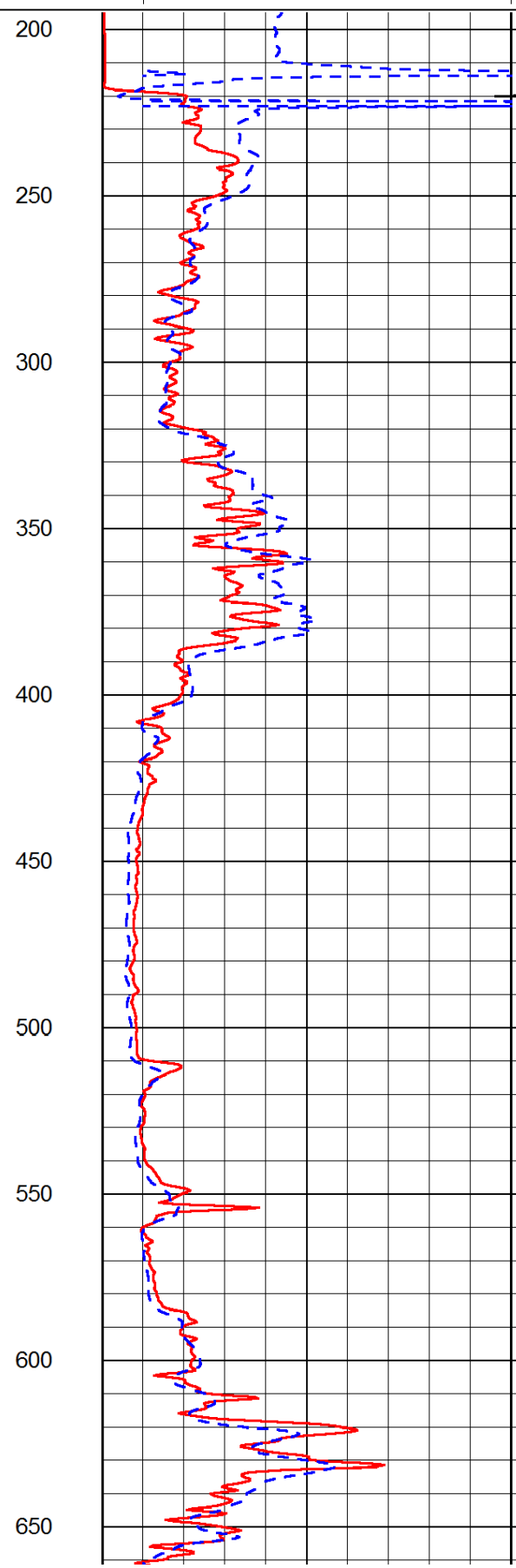
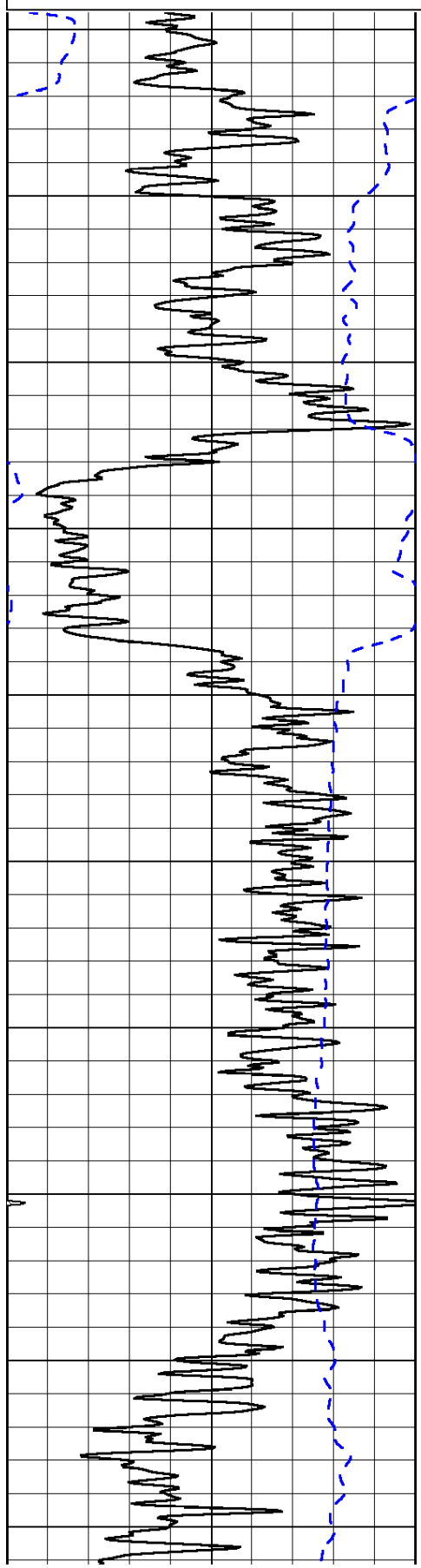
0	Gamma Ray	150
-200	SP (mV)	0

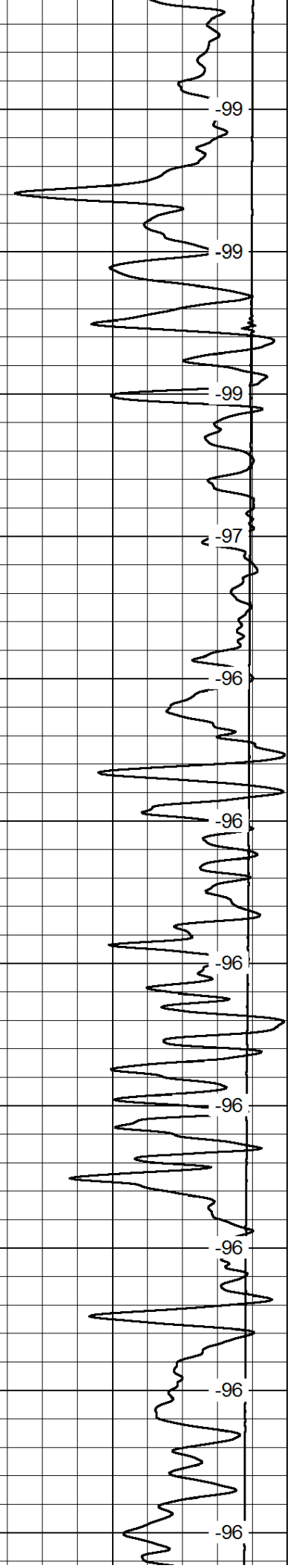
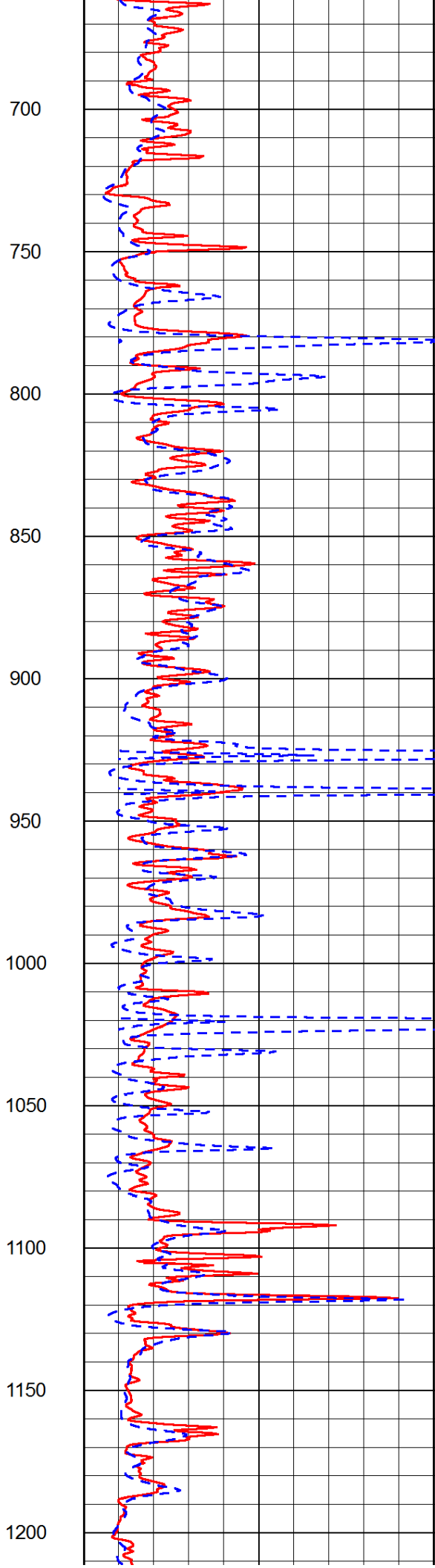
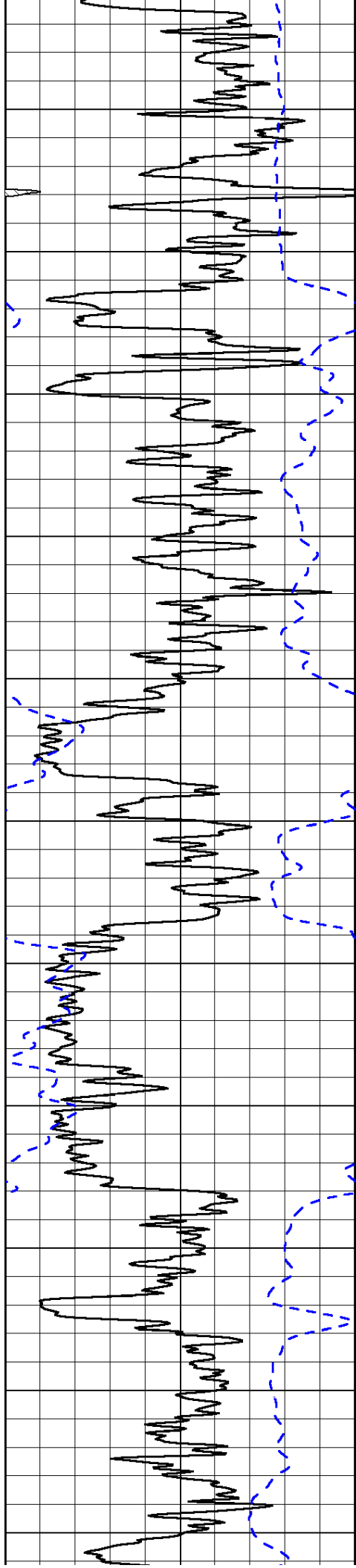
0	Shallow Resistivity	50
0	Deep Resistivity	50

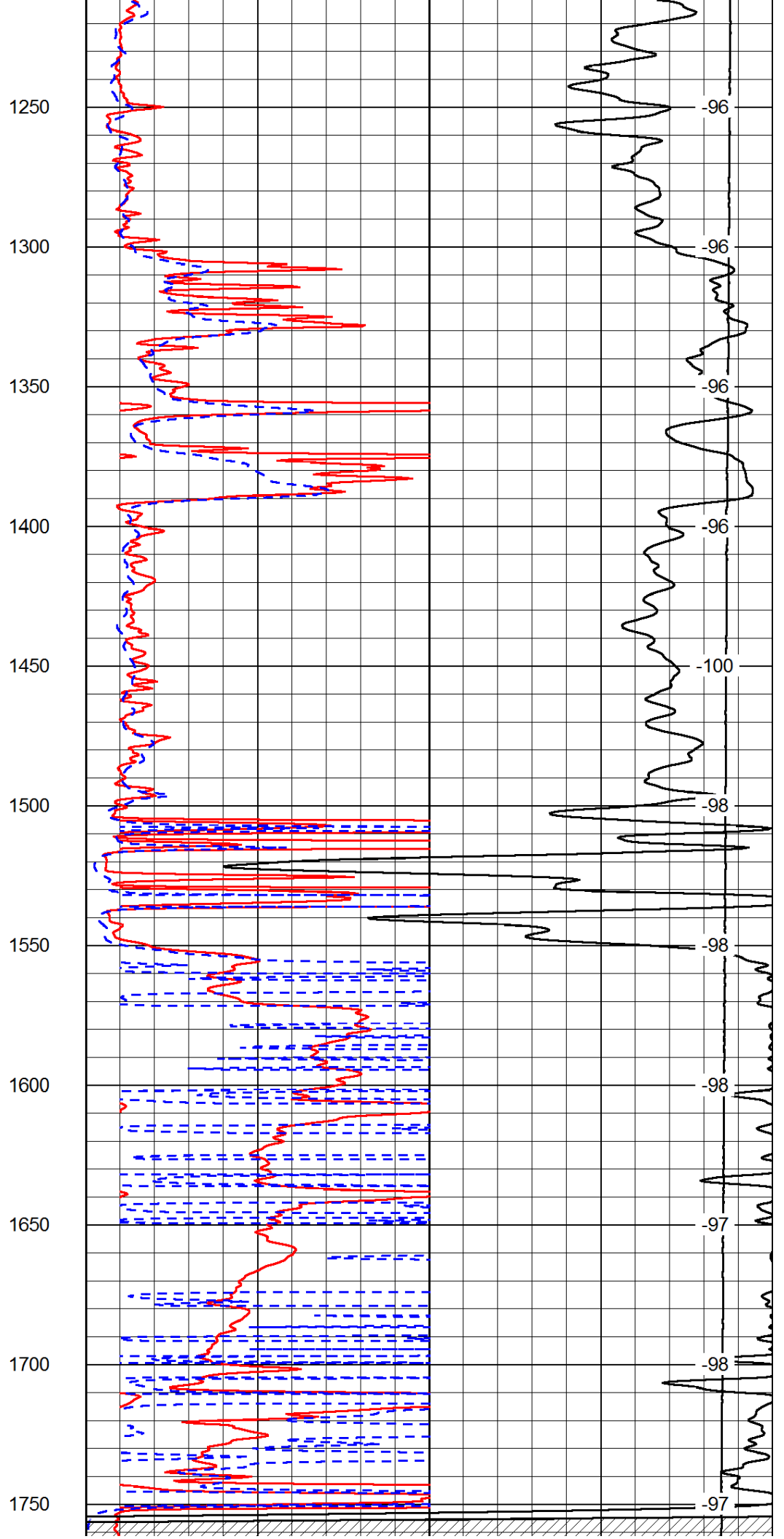
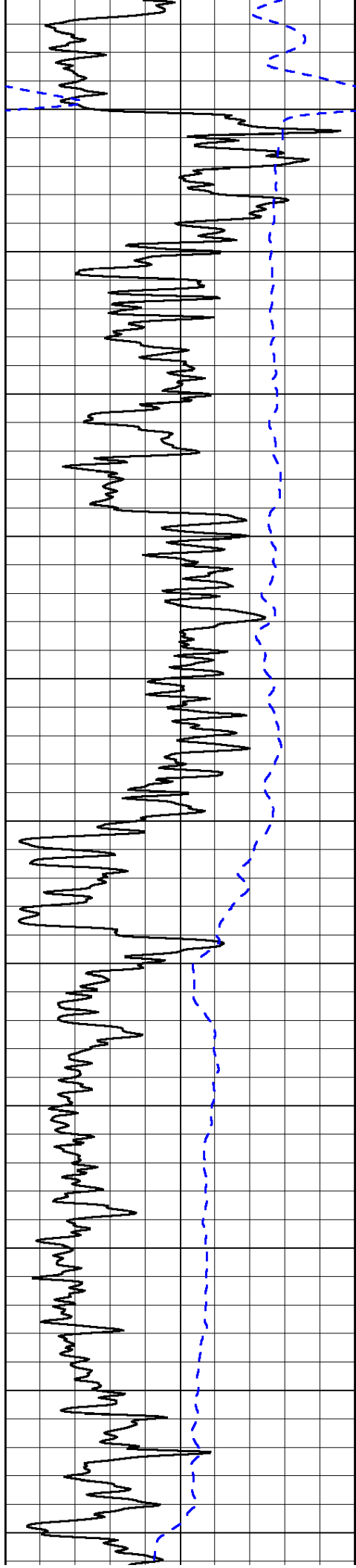
LSPD

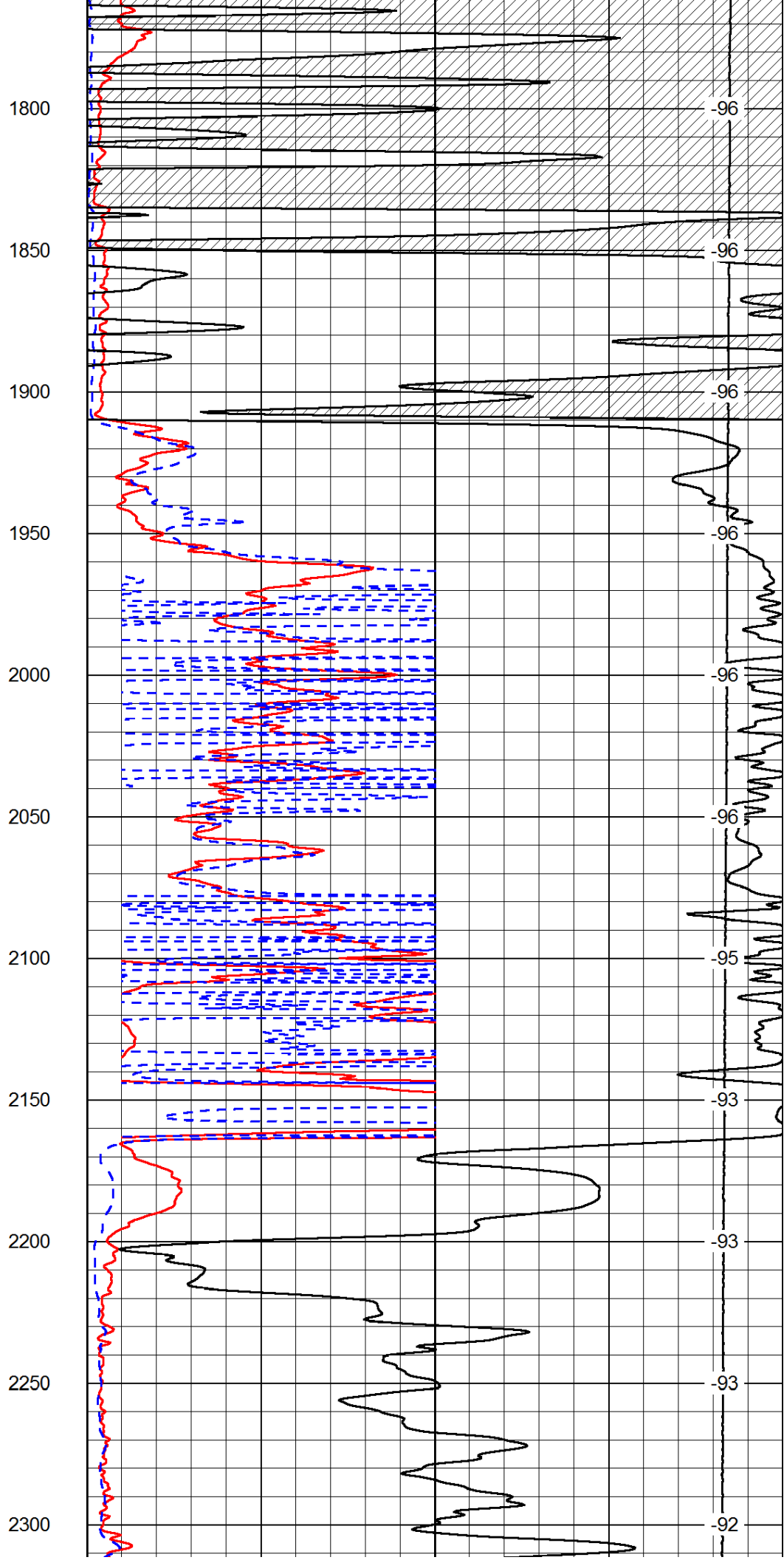
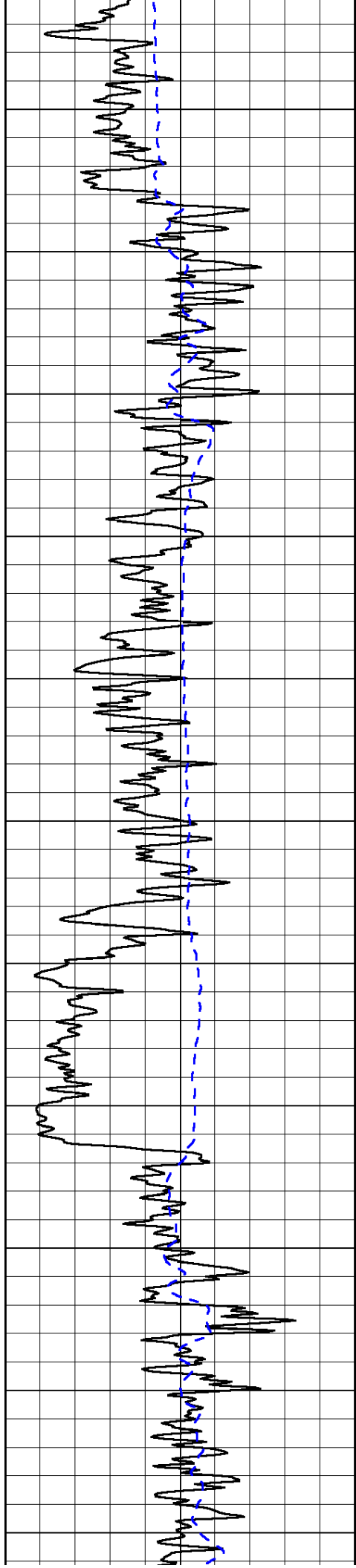
1000	Conductivity	0
15000	Line Tension	0

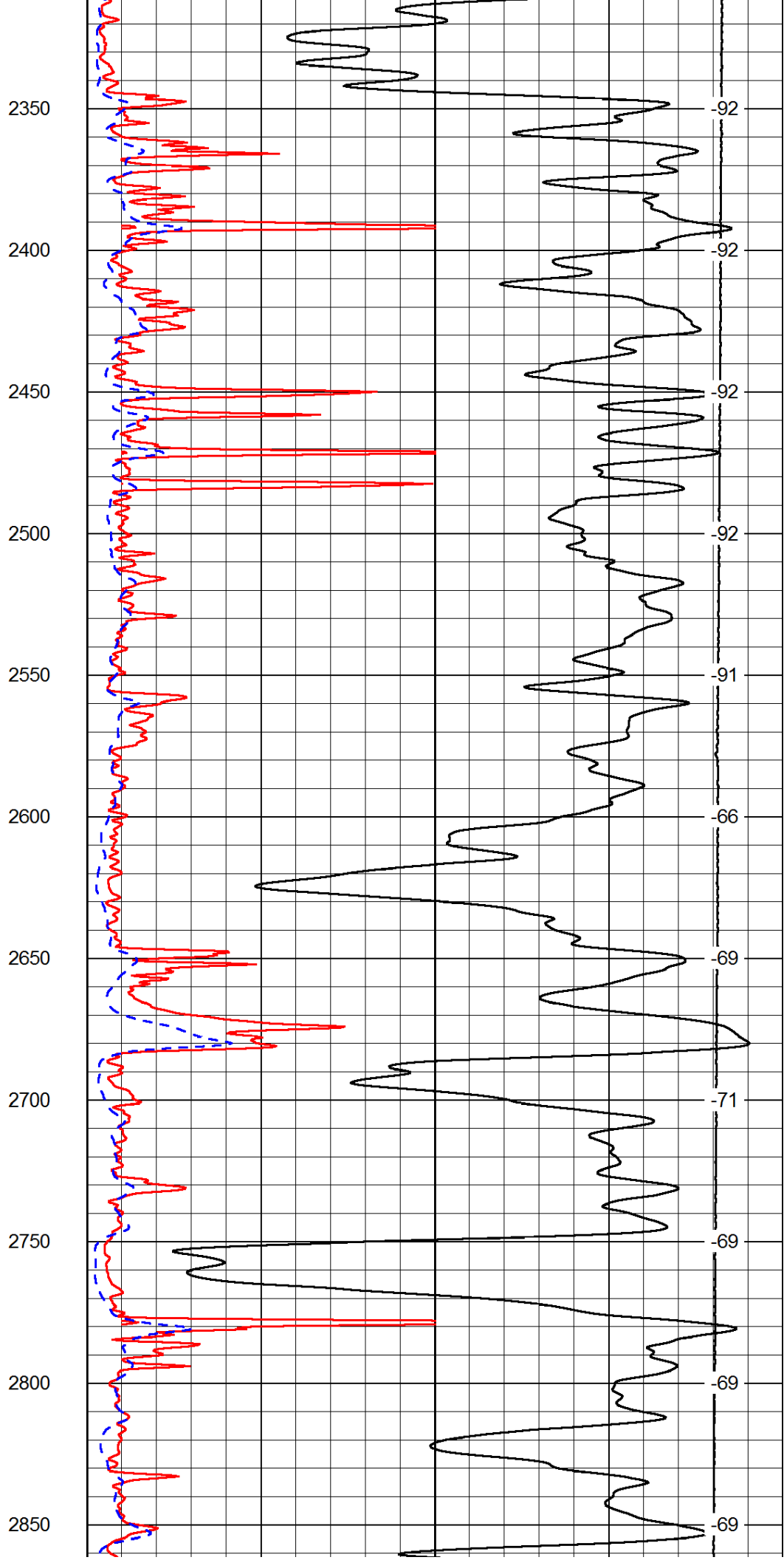
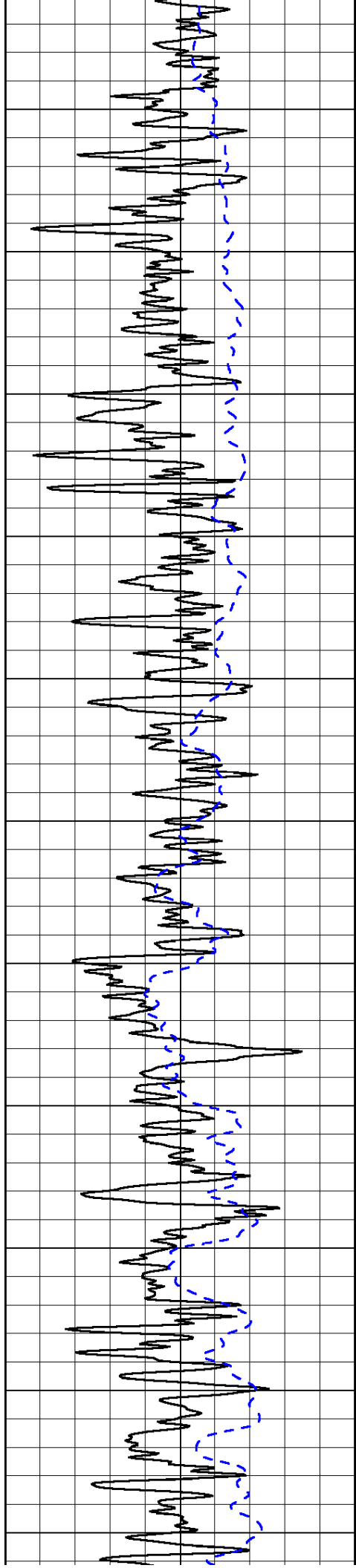
50	Shallow Resistivity	500
50	Deep Resistivity	500

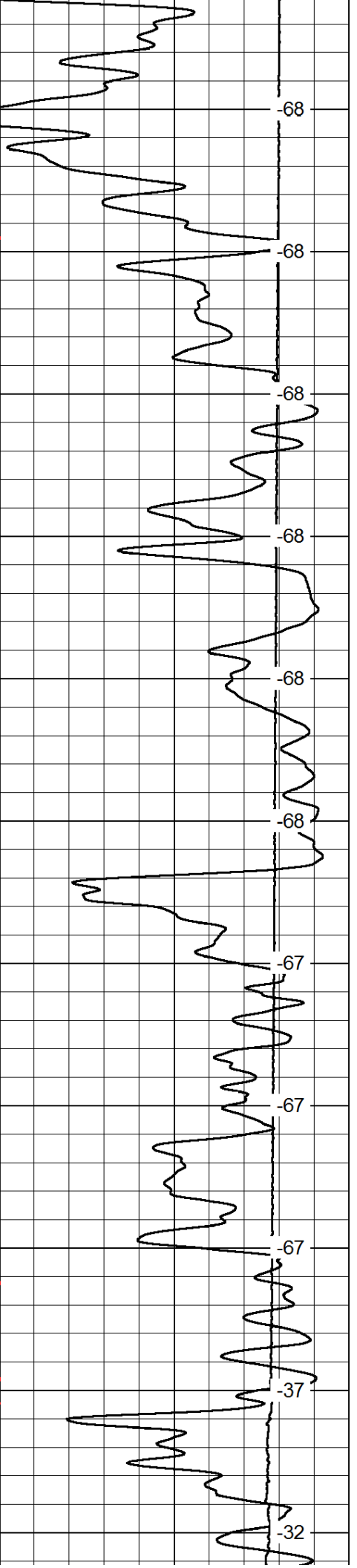
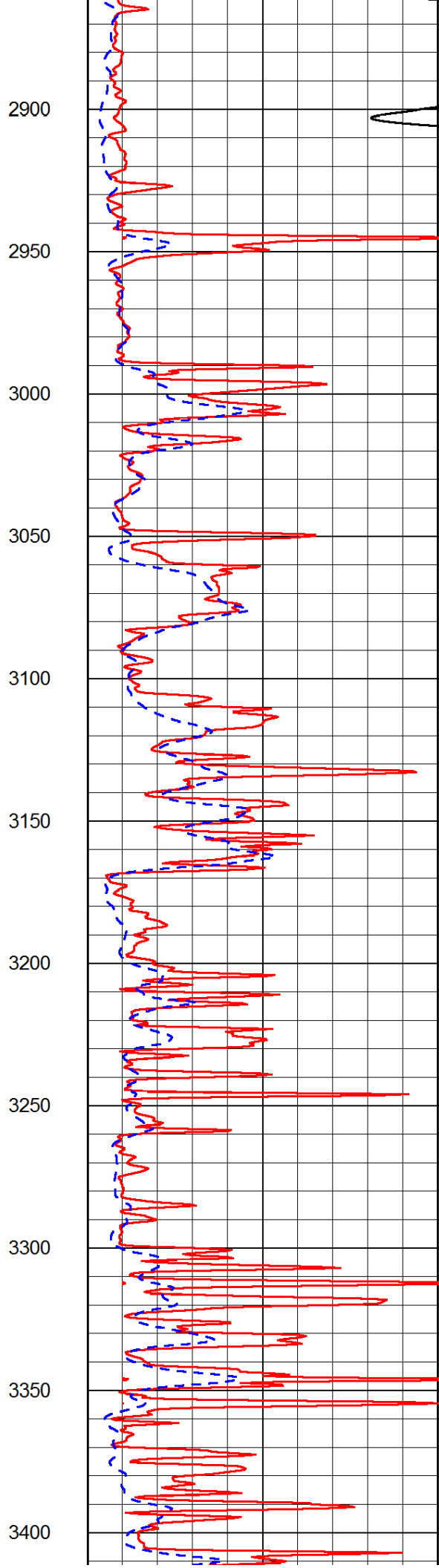
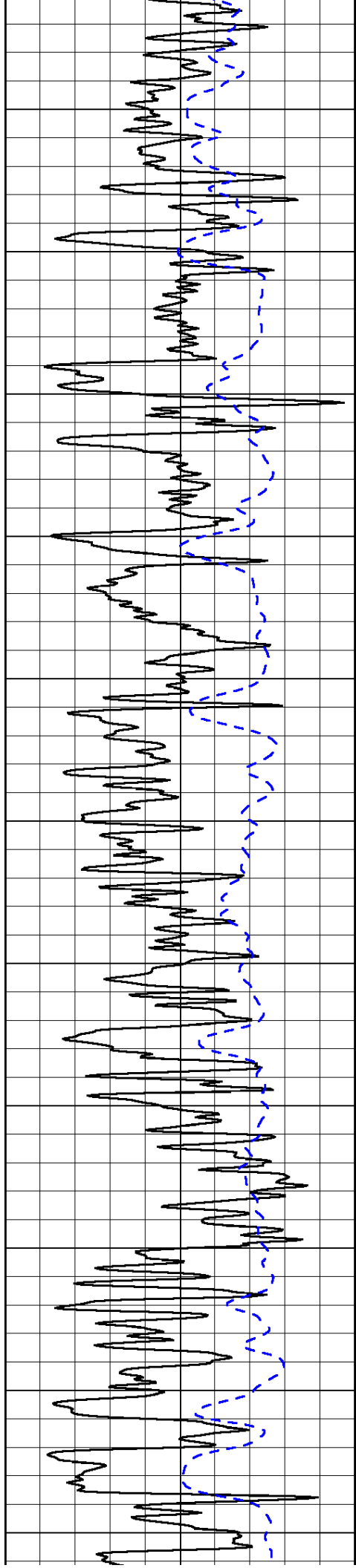


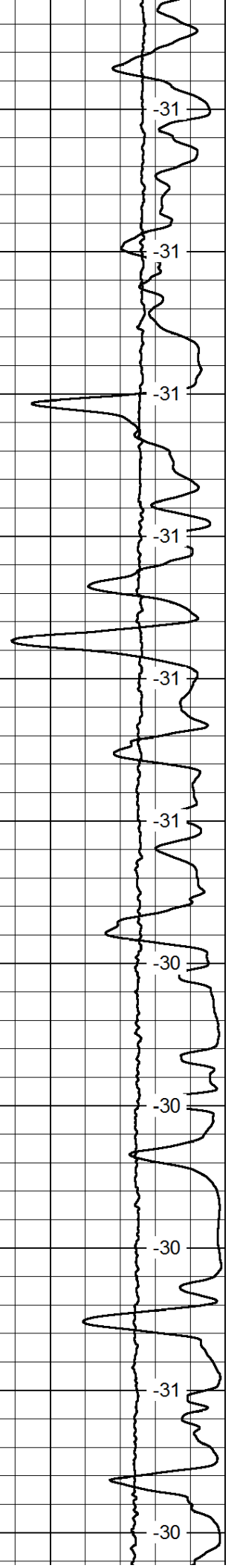
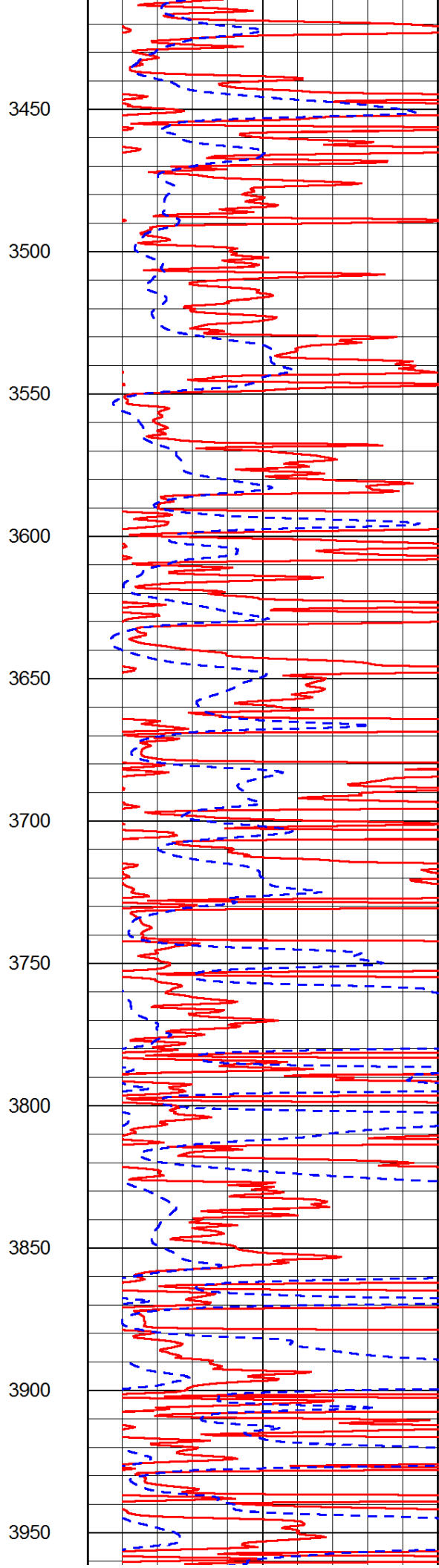
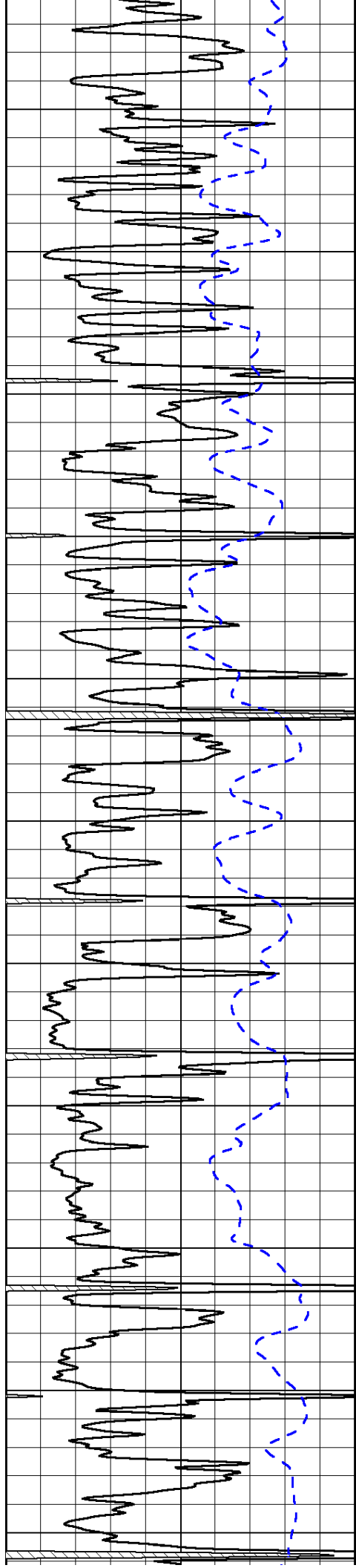


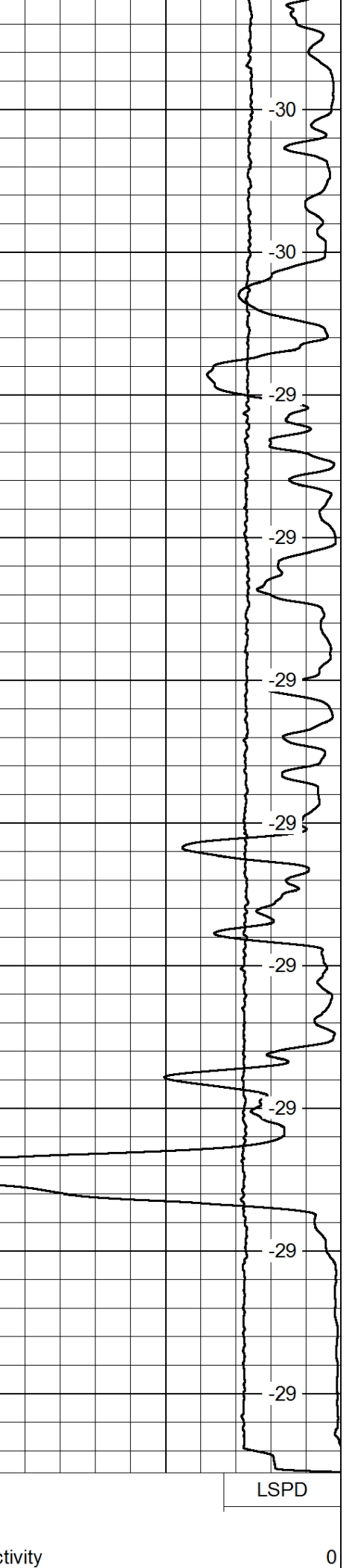
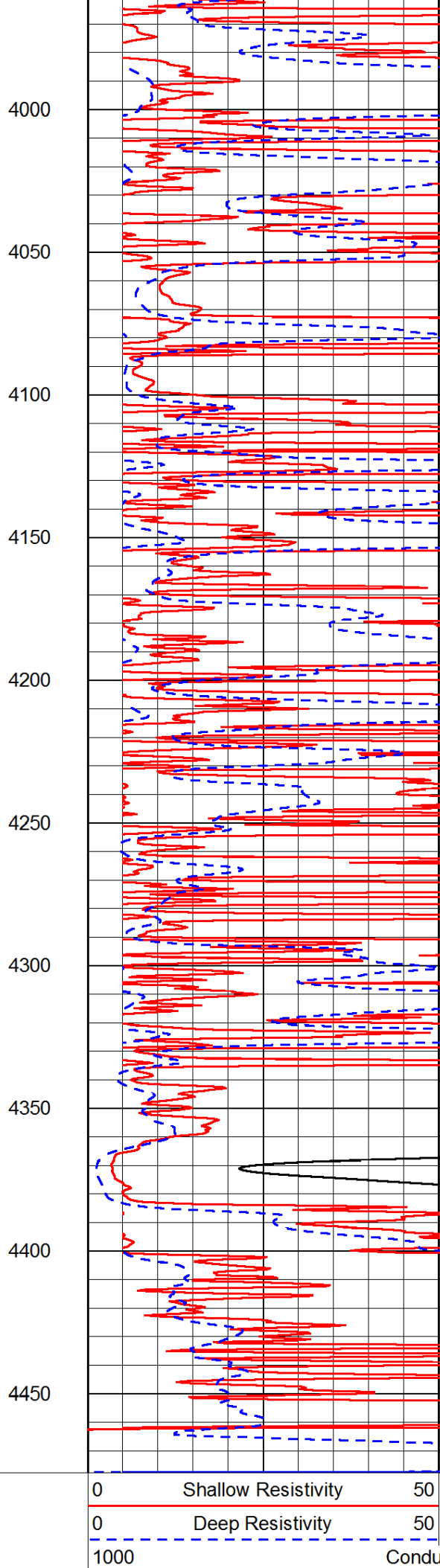
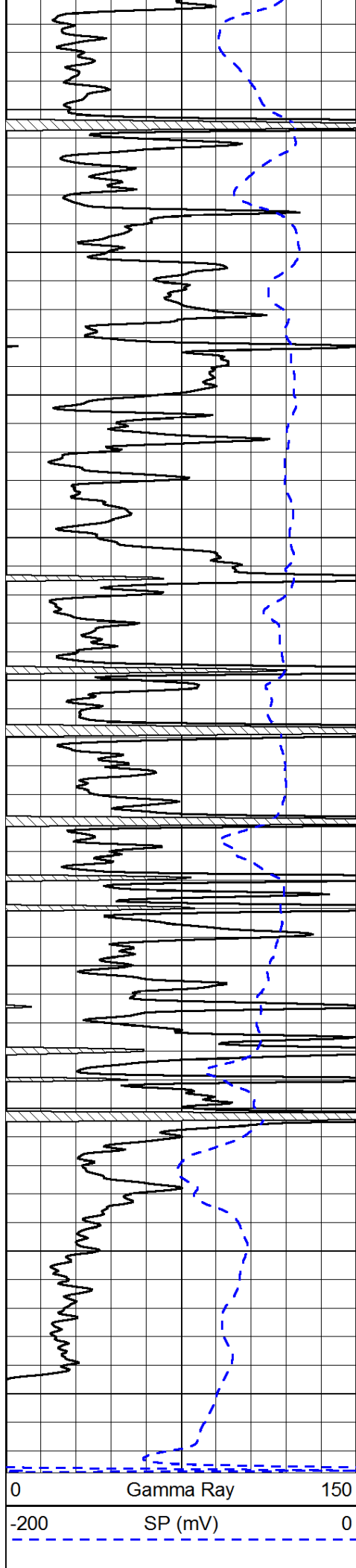












1000 Conductivity

0

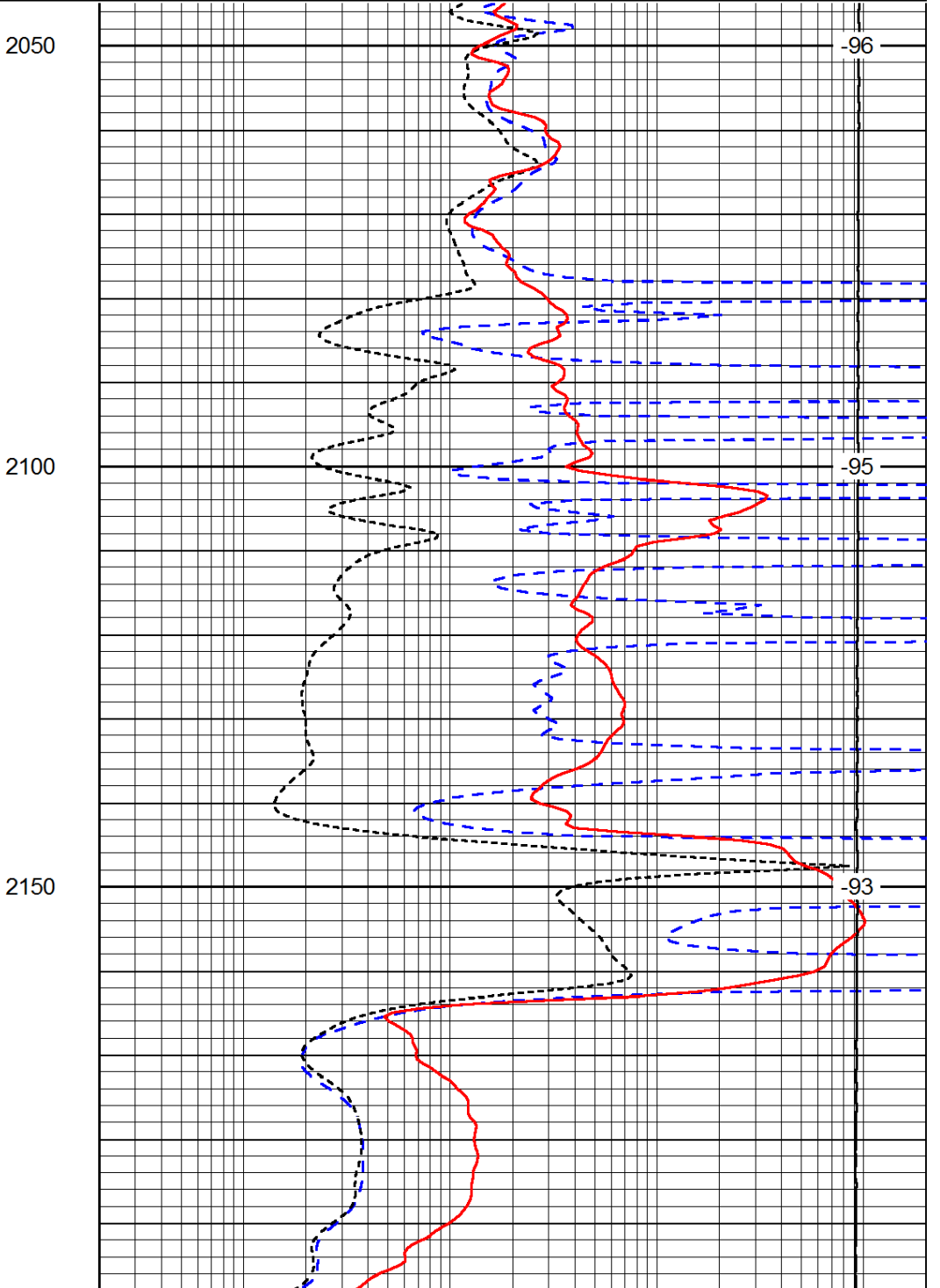
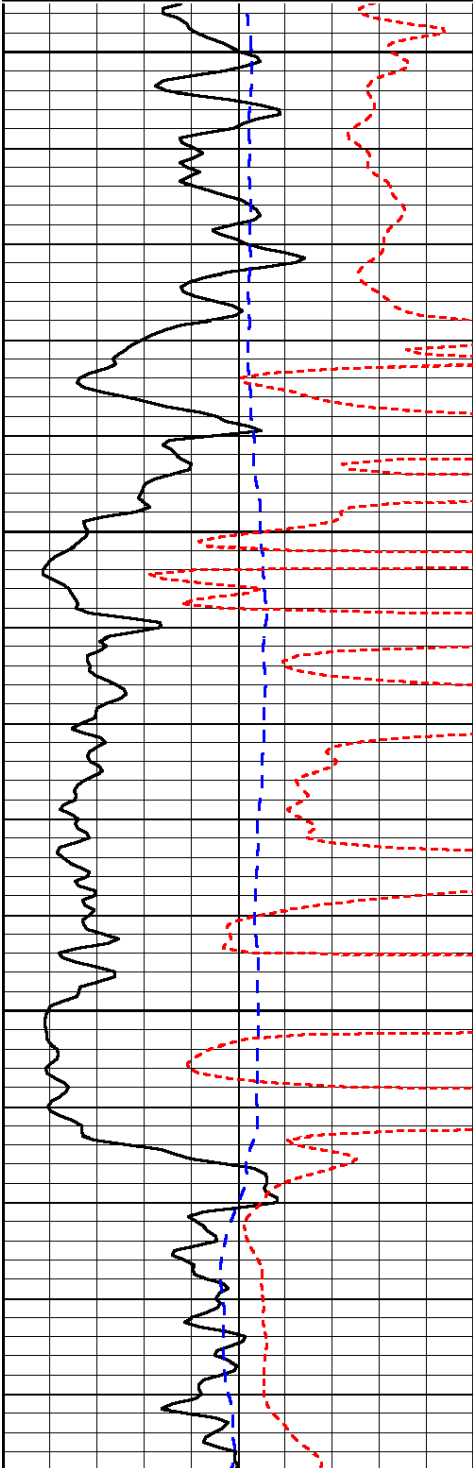
15000	Line Tension		0
50	Shallow Resistivity	500	
50	Deep Resistivity	500	

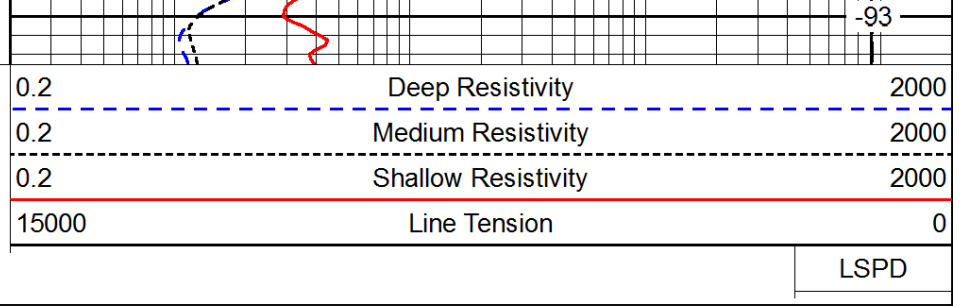
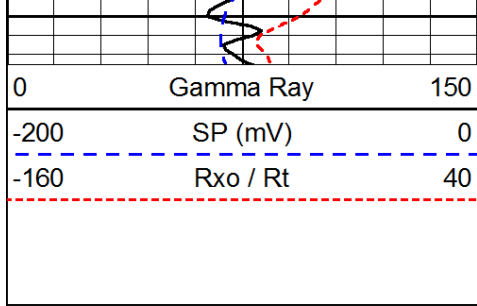
Database File: c:\warrior\data\brito\_fairleigh d #1-7\brito050412hd.db  
 Dataset Pathname: dil/britostk  
 Presentation Format: dil  
 Dataset Creation: Fri May 04 22:29:23 2012  
 Charted by: Depth in Feet scaled 1:240

0	Gamma Ray	150
-200	SP (mV)	0
-160	Rxo / Rt	40

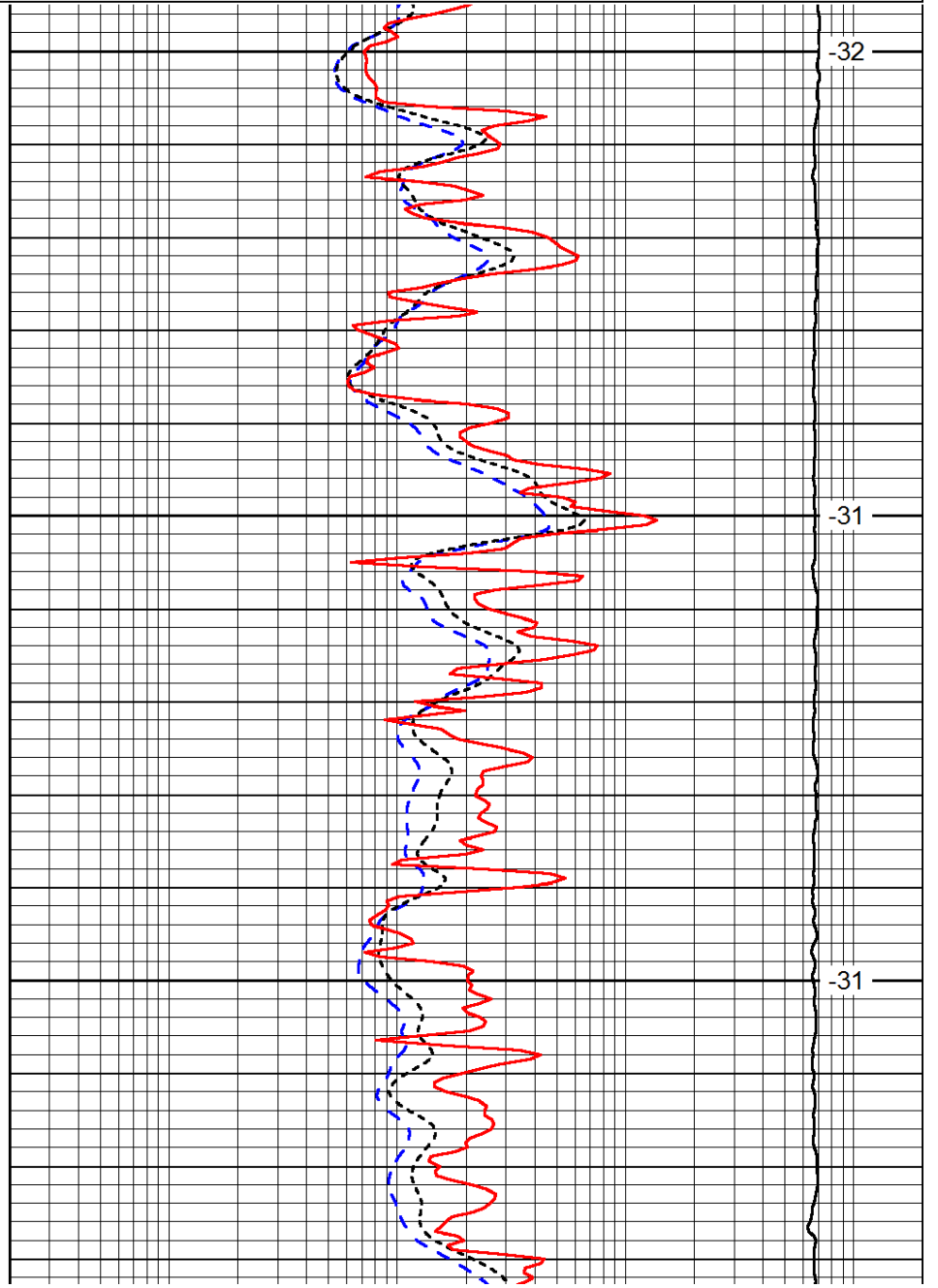
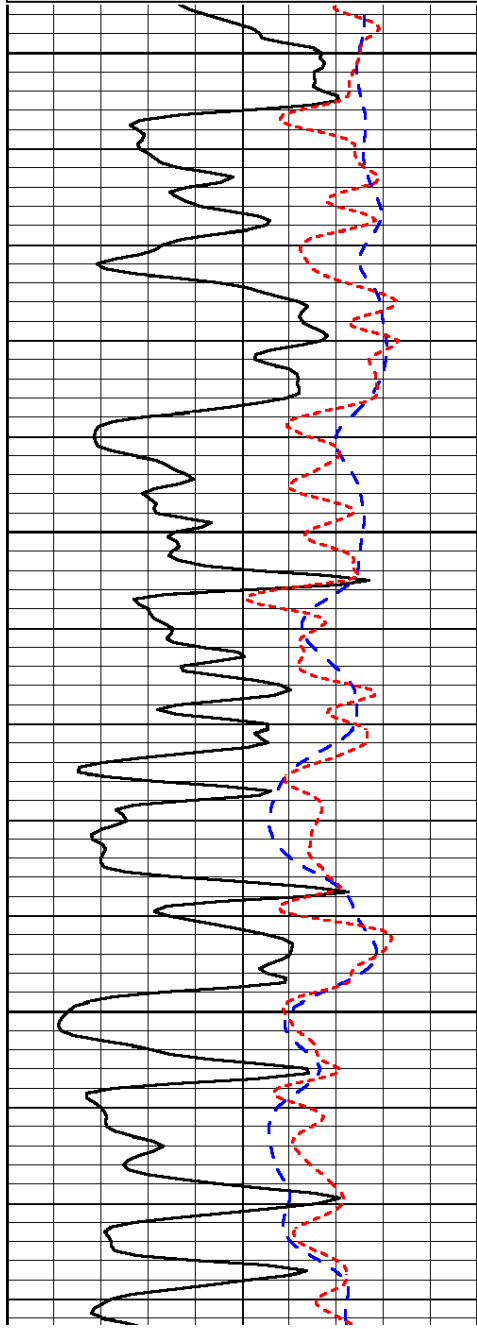
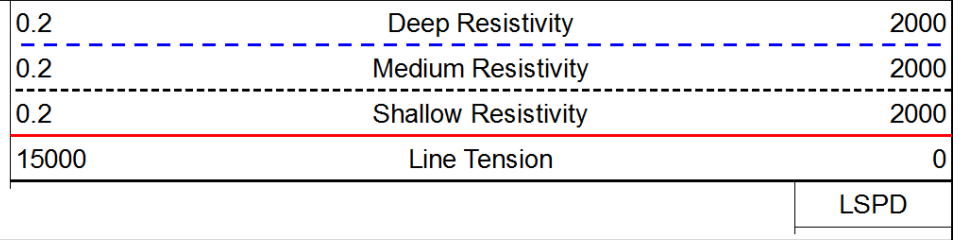
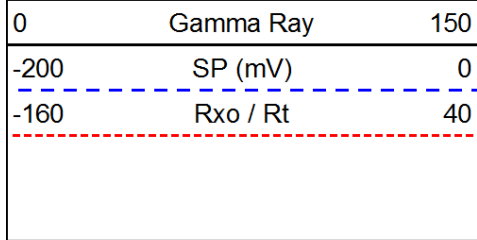
0.2	Deep Resistivity	2000
0.2	Medium Resistivity	2000
0.2	Shallow Resistivity	2000
15000	Line Tension	0

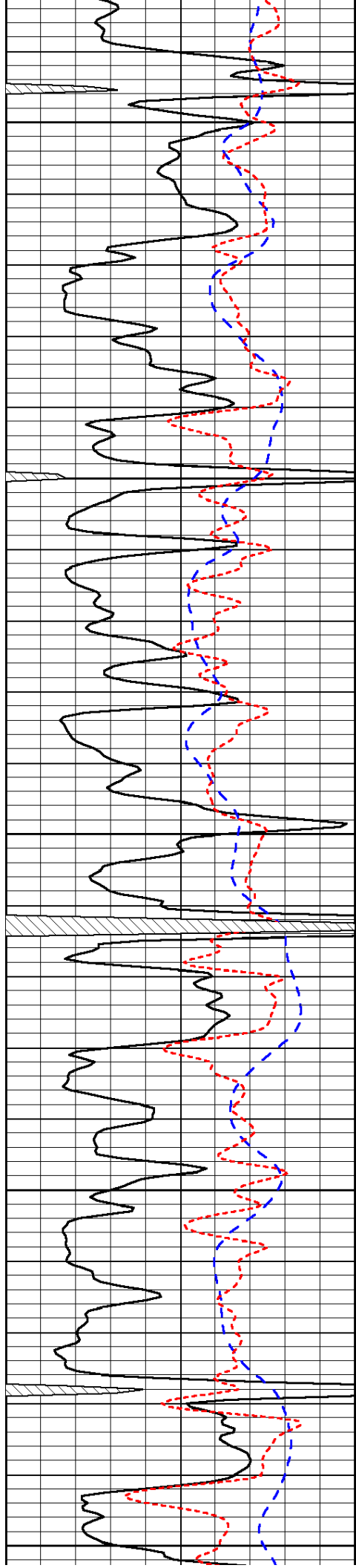
LSPD





Database File: c:\warrior\data\brito\_fairleigh d #1-7\brito050412hd.db  
 Dataset Pathname: dil/britostk  
 Presentation Format: dil  
 Dataset Creation: Fri May 04 22:29:23 2012  
 Charted by: Depth in Feet scaled 1:240





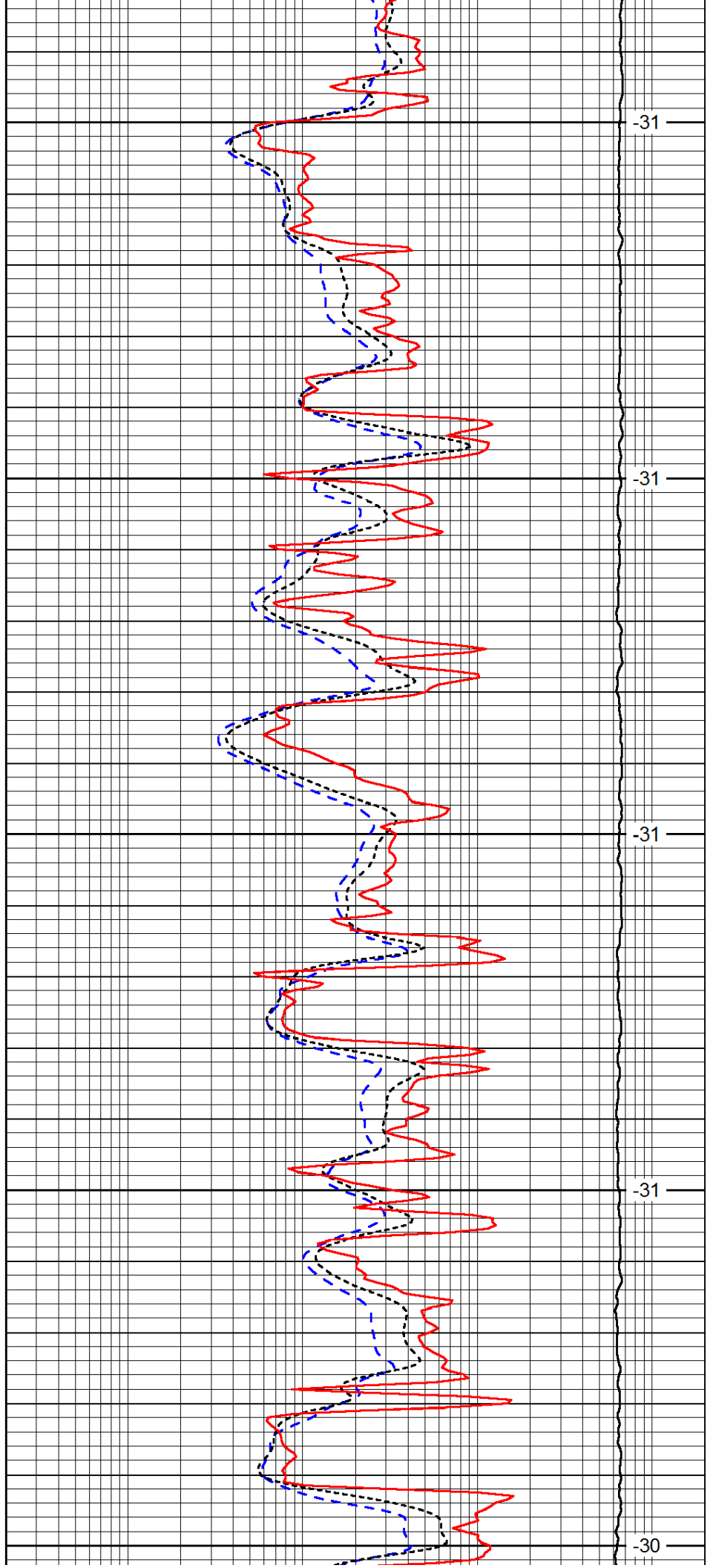
3550

3600

3650

3700

3750



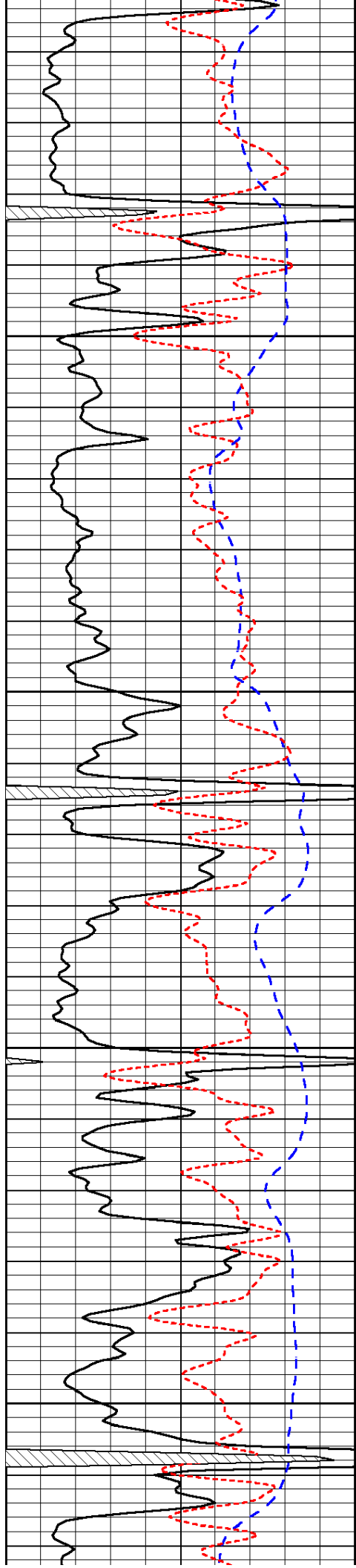
-31

-31

-31

-31

-30

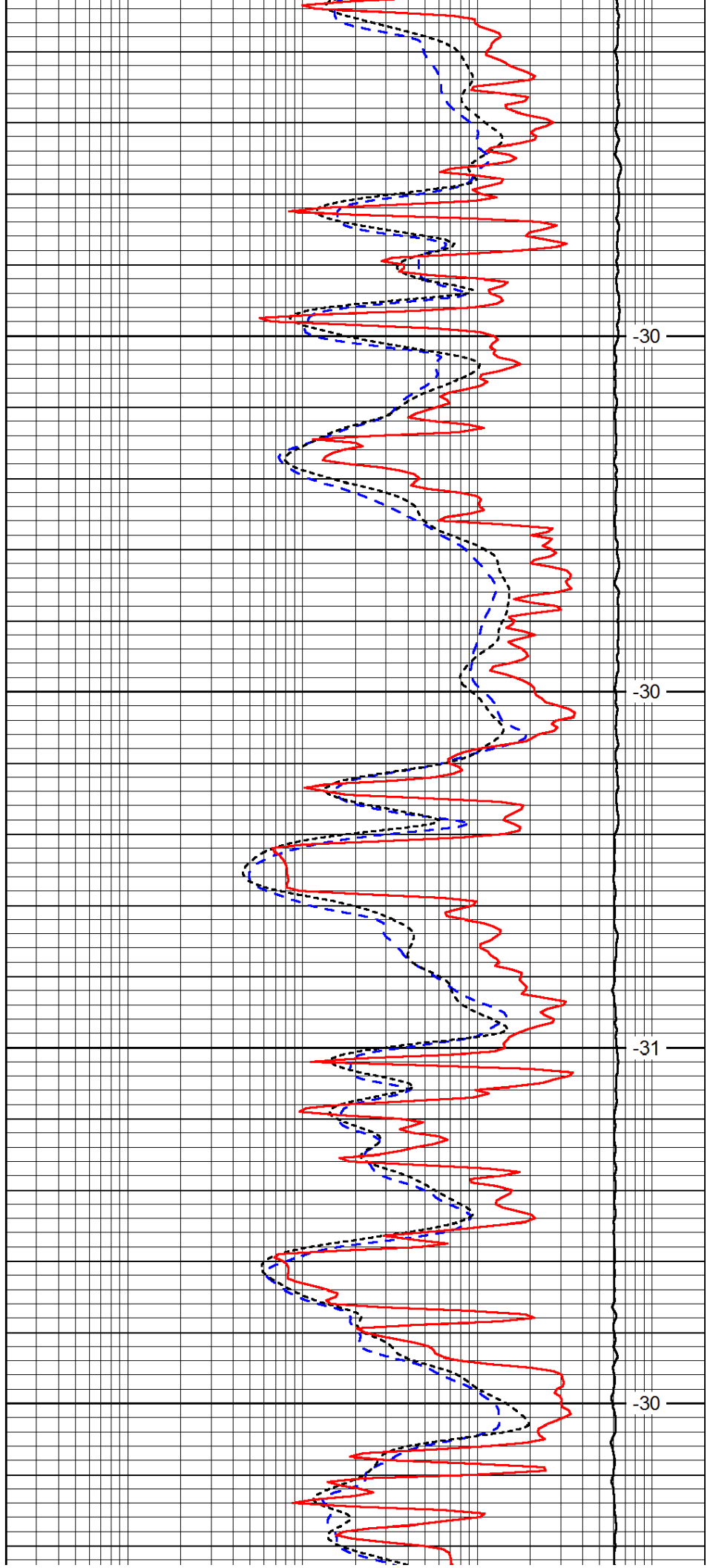


3800

3850

3900

3950

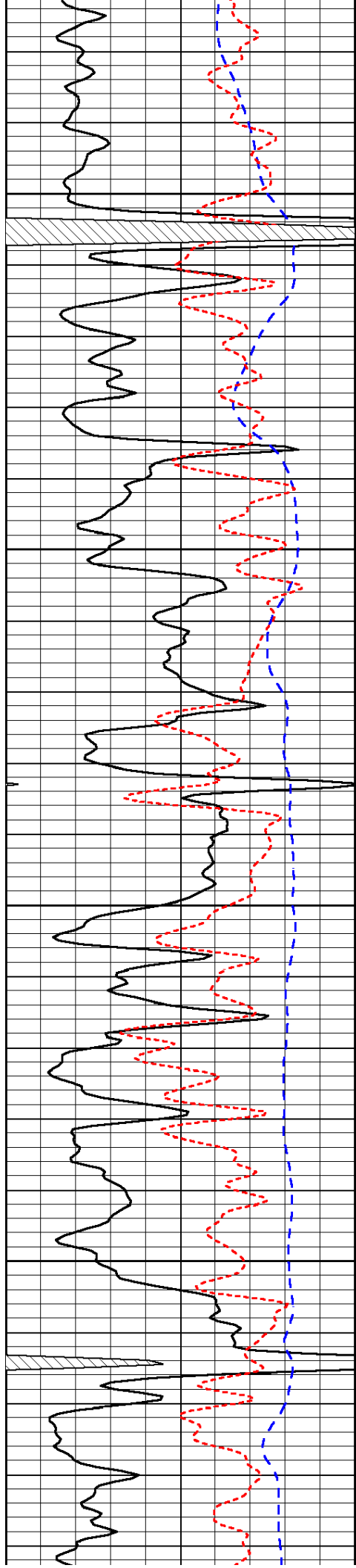


-30

-30

-31

-30

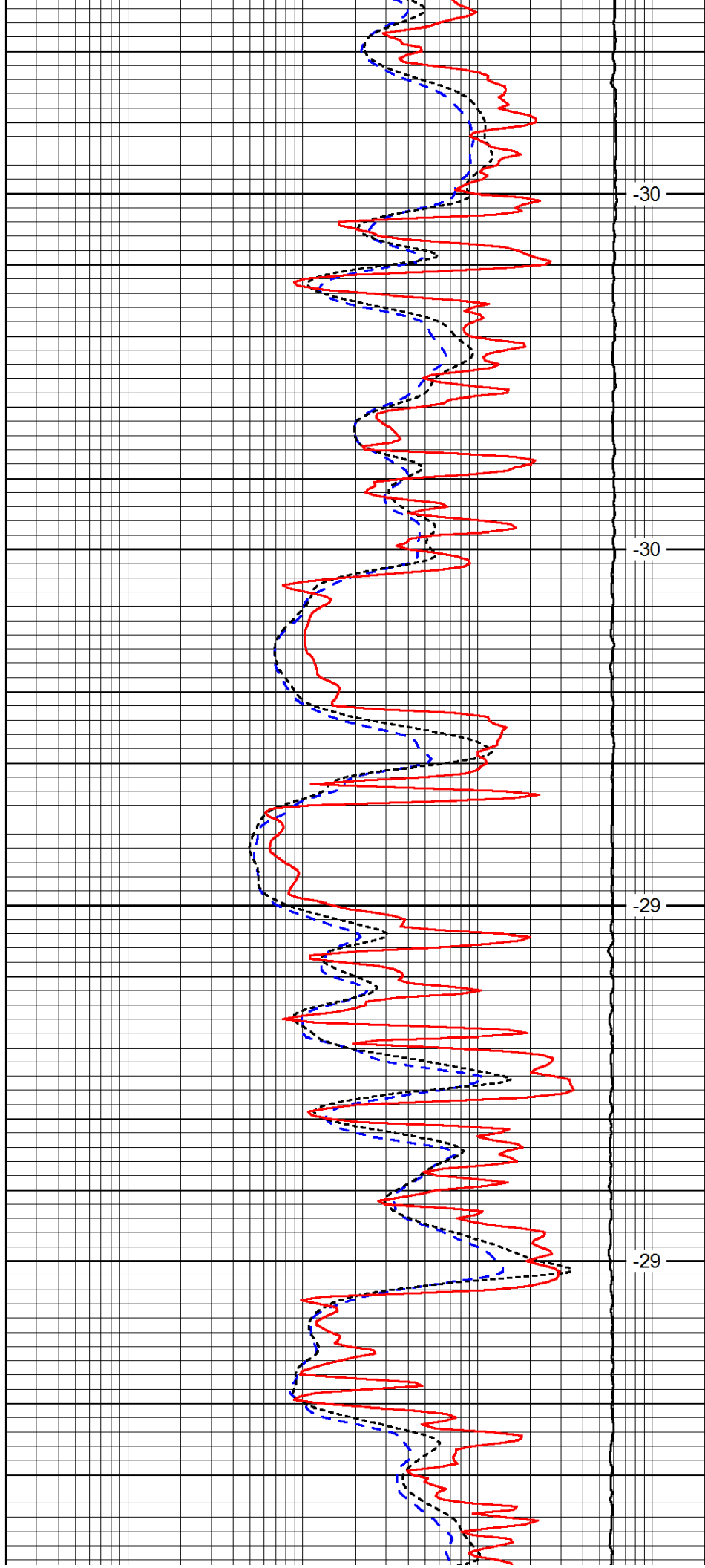


4000

4050

4100

4150

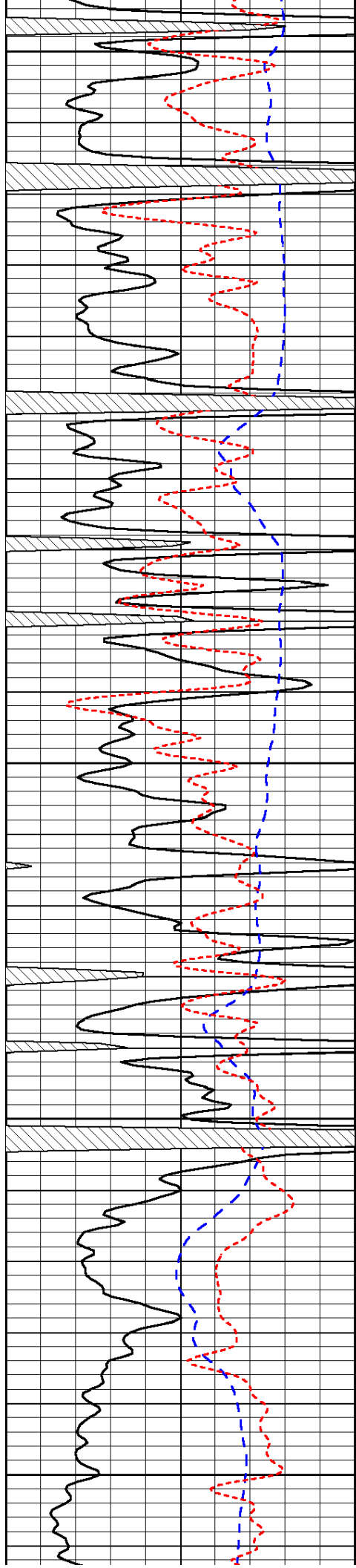


-30

-30

-29

-29



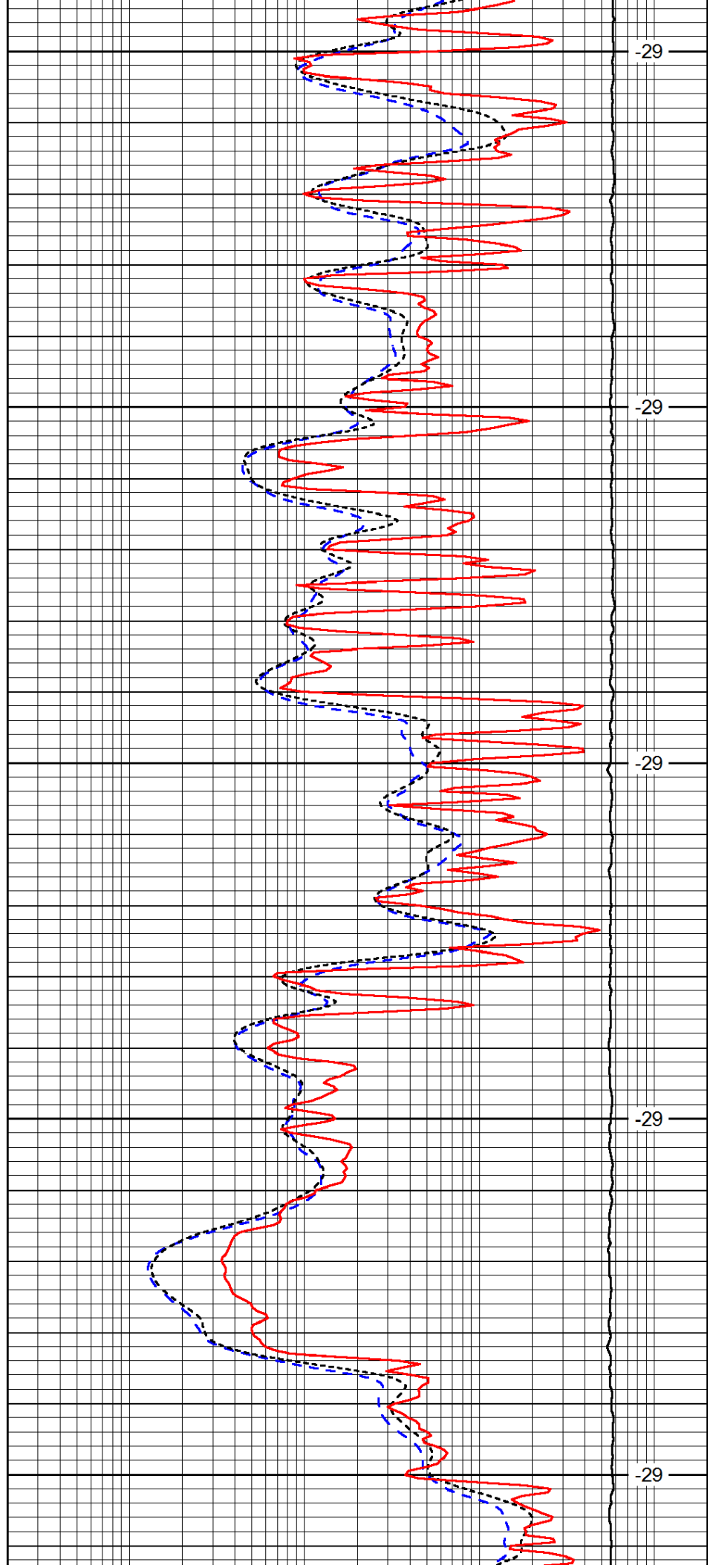
4200

4250

4300

4350

4400



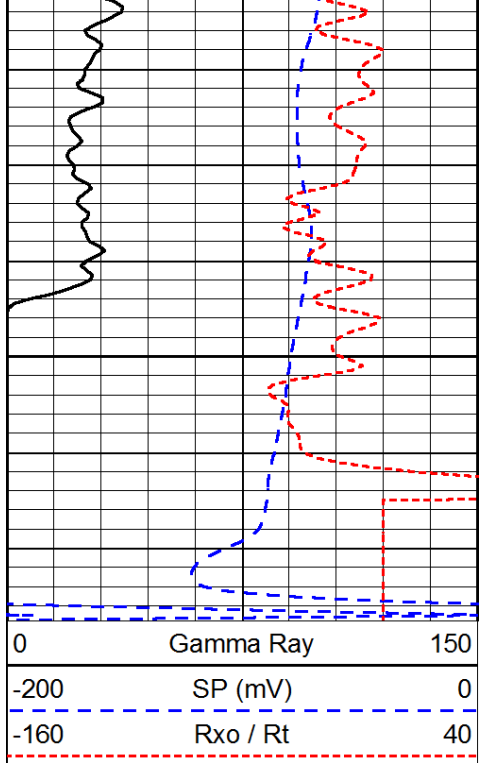
-29

-29

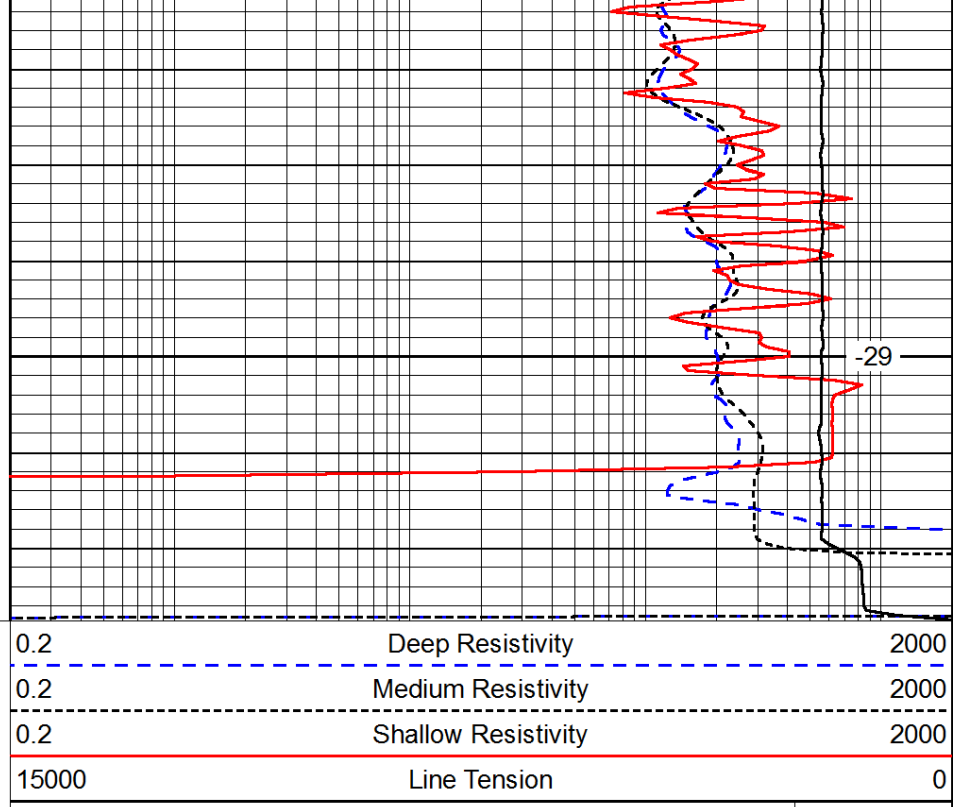
-29

-29

-29



4450



-29

LSPD