



DIGITAL LOG (785) 625-3858

Dual Compensated Porosity Log

15-135-24,404-00-01

API No. 15-135-24,404-00-01

Company Berexco LLC
 Well Randa No. 1
 Field Ness
 County Ness State Kansas

Location SW NE NE SE
 2,200' FSL & 350' FEL

Sec: 4 Twp: 16S Rge: 25W

Ground Level Elevation 2536
 Log Measured From Kelly Bushing 12 Ft. Above Perm. Datum
 Drilling Measured From Kelly Bushing

Other Services
 DIL
 MEL

Elevation
 K.B. 2548
 D.F.
 G.L. 2536

Date	4/20/2012						
Run Number	One						
Type Log	CNL / CDL						
Depth Driller	4600						
Depth Logger	4592						
Bottom Logged Interval	4571						
Top Logged Interval	3600						
Type Fluid In Hole	Chemical						
Salinity, PPM CL	2000						
Density Level	9.5						
Max. Rec. Temp. F	Full						
Operating Rig Time	122						
Equipment -- Location	4 Hours						
Recorded By	10 Hays						
Witnessed By	J. Long						
	Bruce Meyer						
Borehole Record							
Run No.	Bit	From	To	Size	Wgt.	From	To
1	12.25	00	258	8.625	24#	00	258
2	7.875	258	4600				
Casing Record							

<<< Fold Here >>>

All interpretations are opinions based on inferences from electrical or other measurements and we cannot and do not guarantee the accuracy or correctness of any interpretation, and we shall not, except in the case of gross or willful negligence on our part, be liable or responsible for any loss, costs, damages, or expenses incurred or sustained by anyone resulting from any interpretation made by any of our officers, agents or employees. These interpretations are also subject to our general terms and conditions set out in our current Price Schedule.

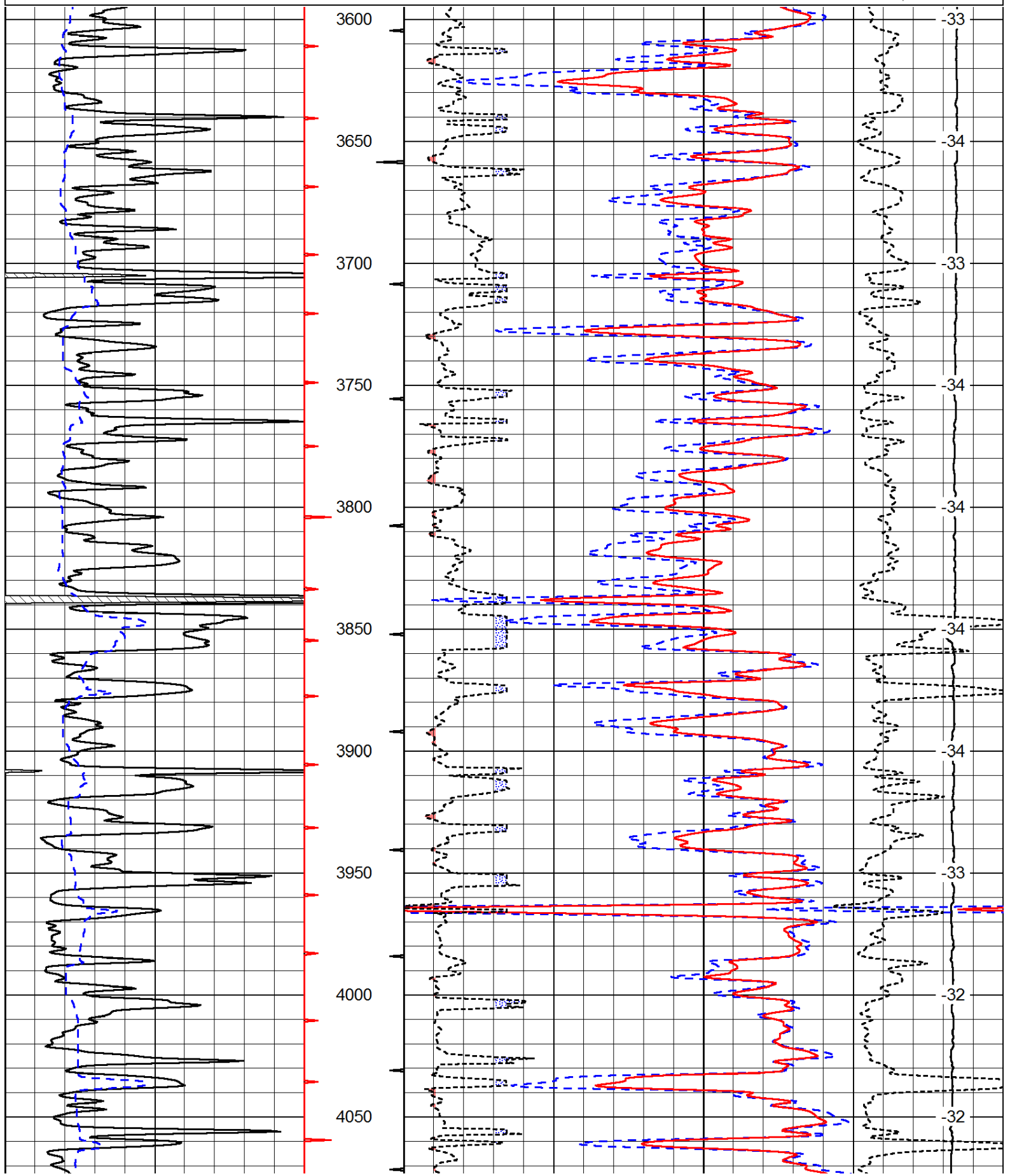
Comments

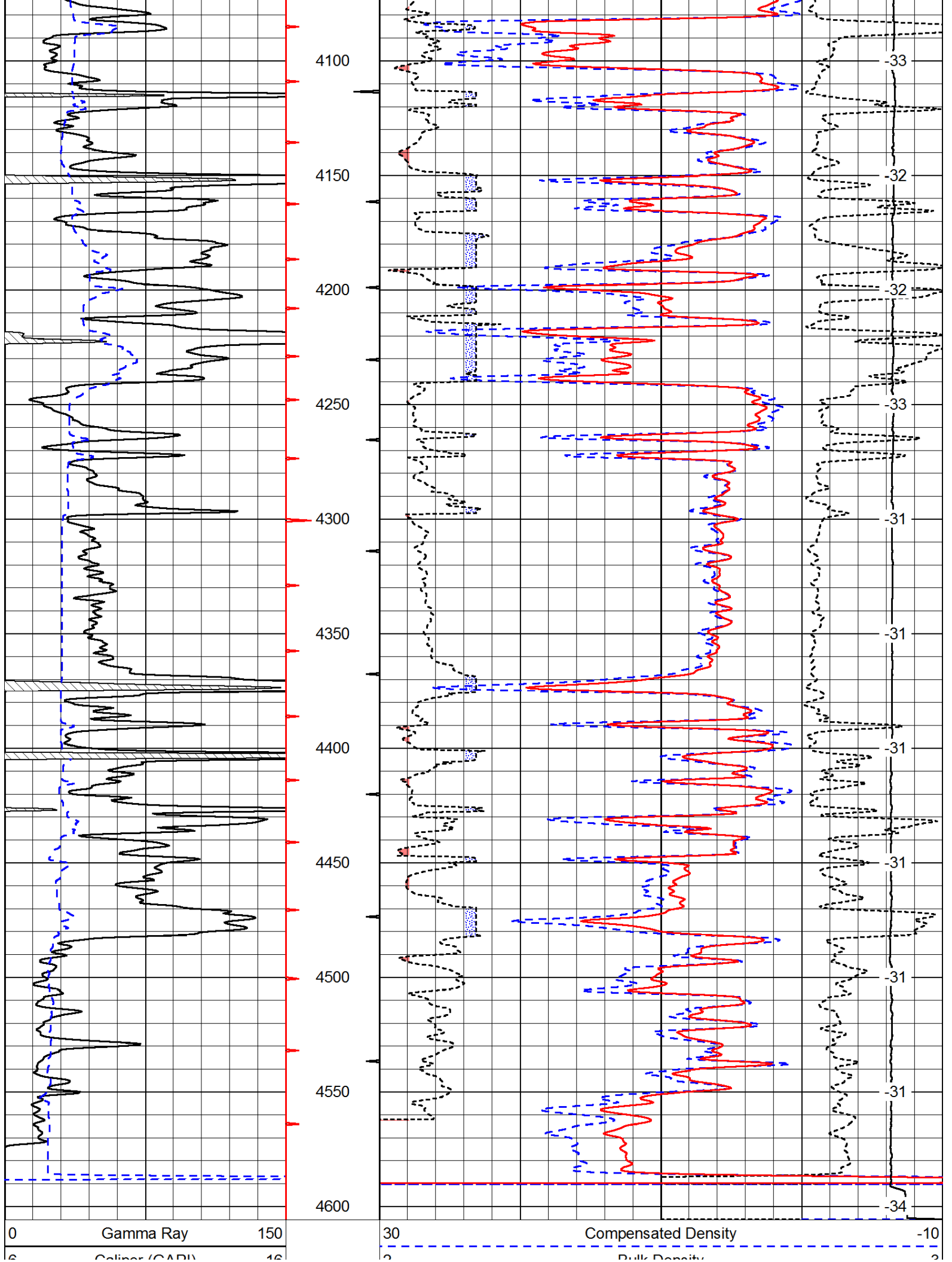
Thank you for using Log-Tech, Inc.
 (785) 625-3858

 Arnold, 2 West to I Road, 3 1/2 North, West Into

0	Gamma Ray	150
6	Caliper (GAPI)	16

30	Compensated Density		-10
2	Bulk Density		3
15000	Line Tension		0
2.625	DGA	3.425 -0.25	Correction 0.25
LSPD			

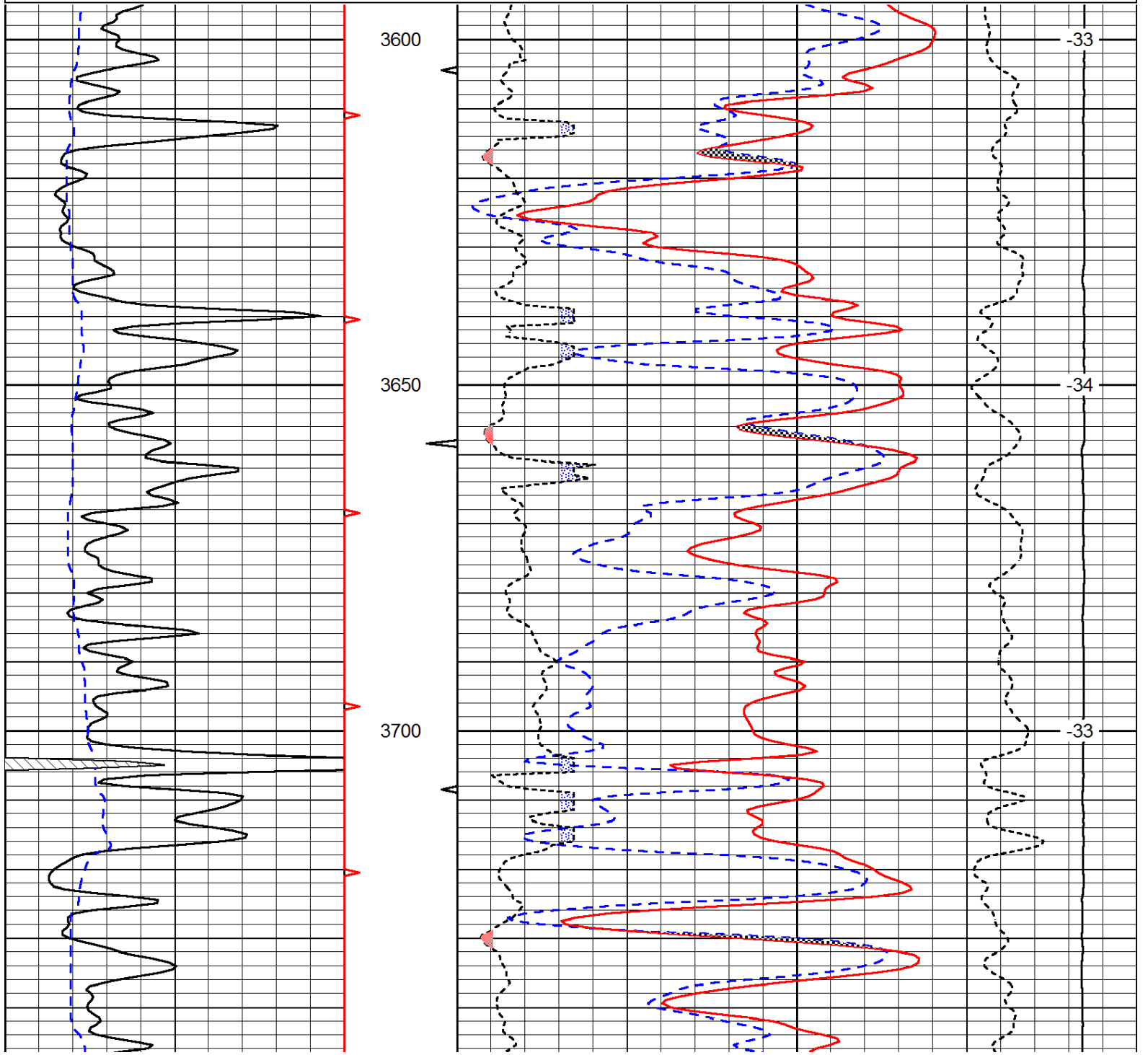


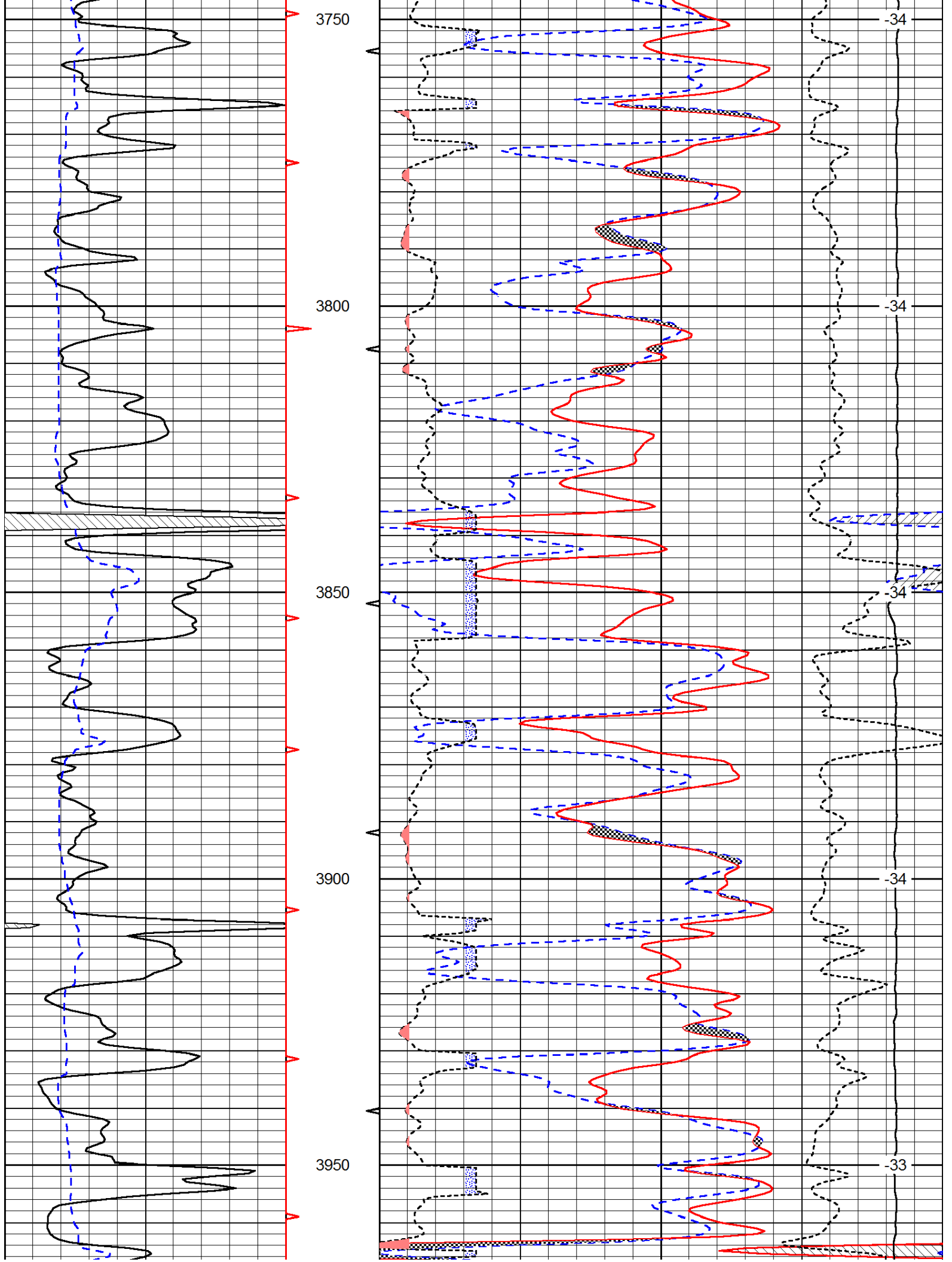


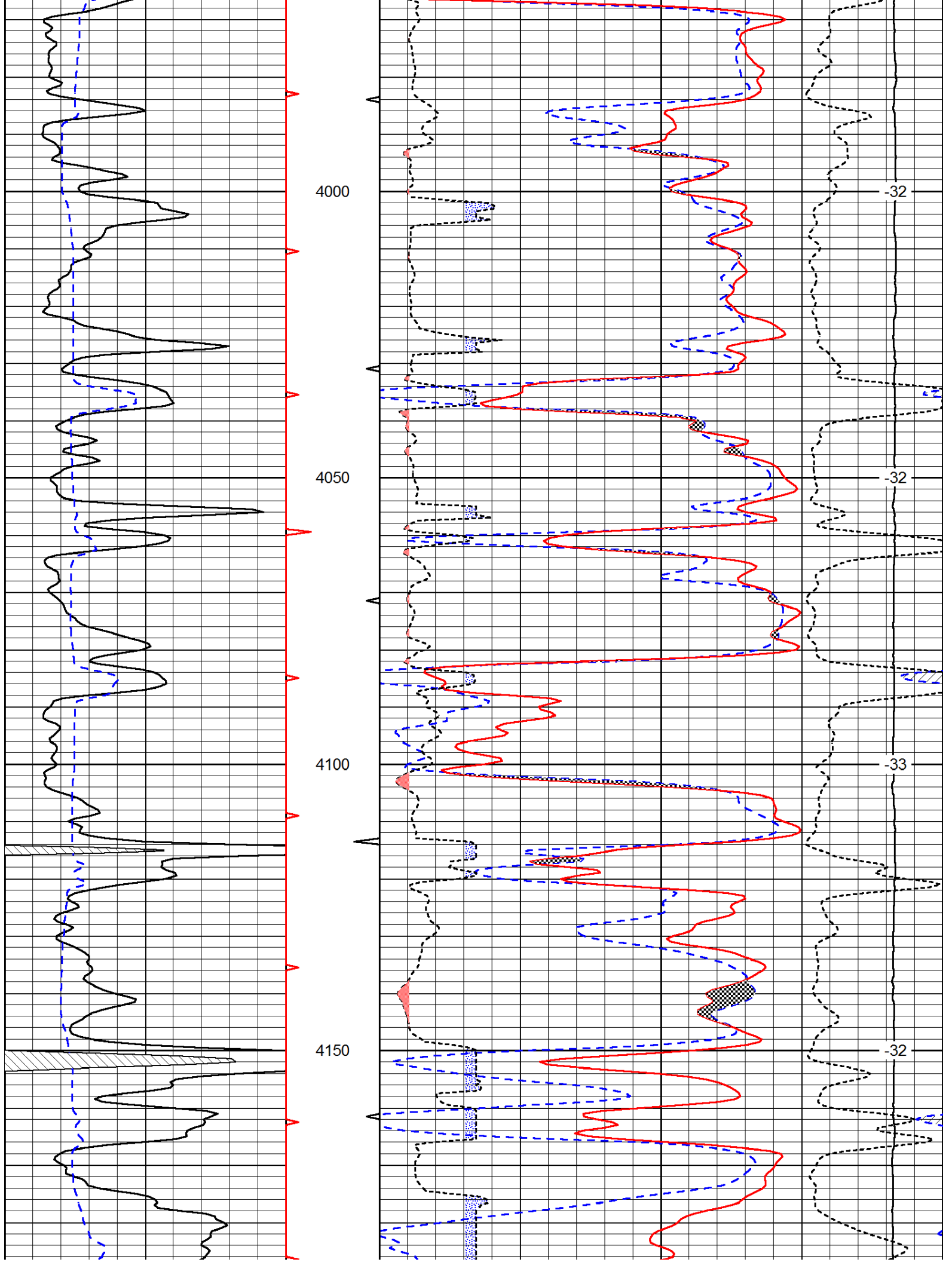
0	Caliper (GAPI)	10	2	Bulk Density	3
15000			Line Tension		0
2.625	DGA	3.425	-0.25	Correction	0.25
					LSPD

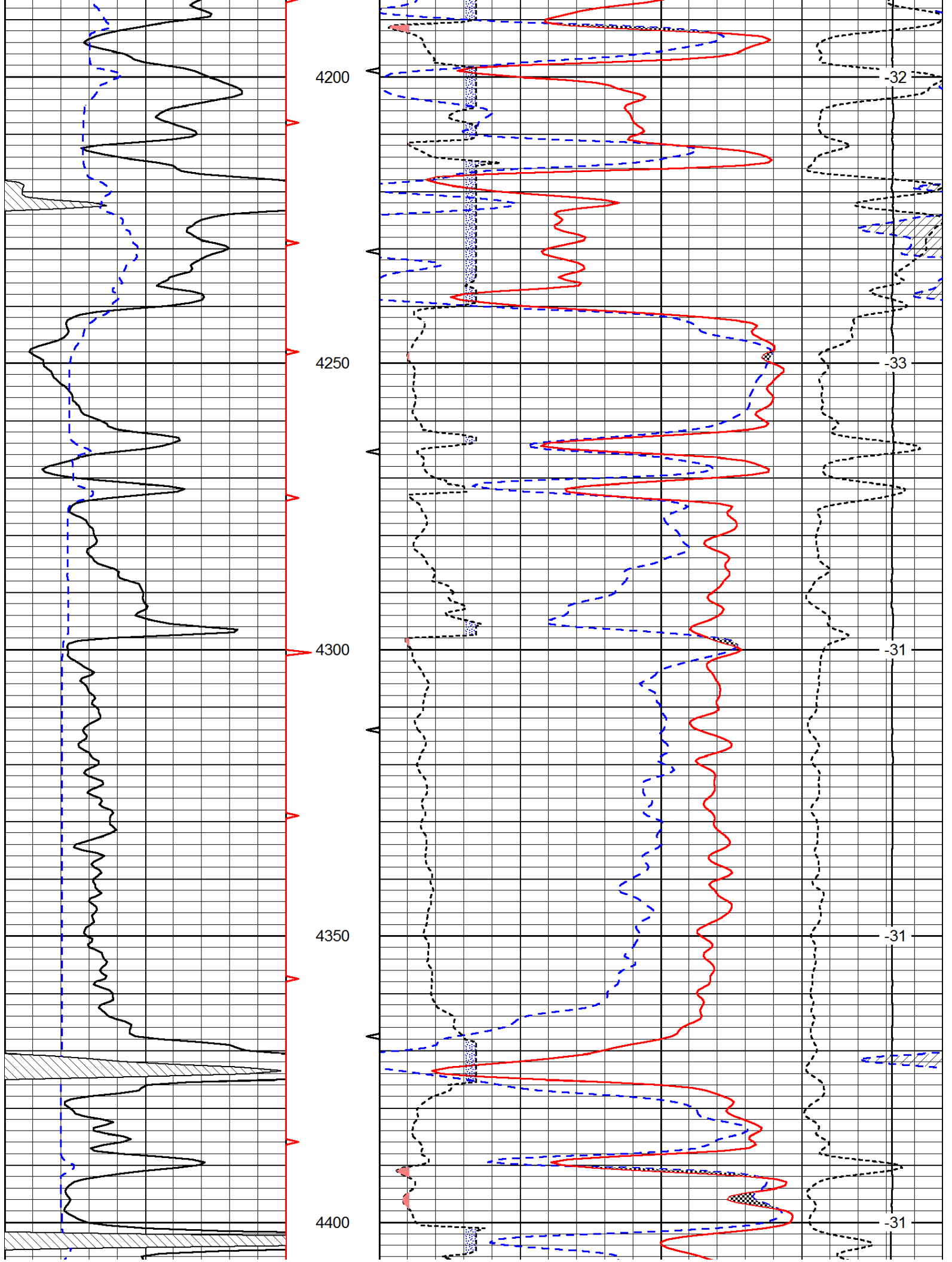
Database File: c:\warrior\data\berexco_randa no. 1\berexco_randa_1hd.db
 Dataset Pathname: dil/berestck
 Presentation Format: cndlspec
 Dataset Creation: Fri Apr 20 18:29:51 2012
 Charted by: Depth in Feet scaled 1:240

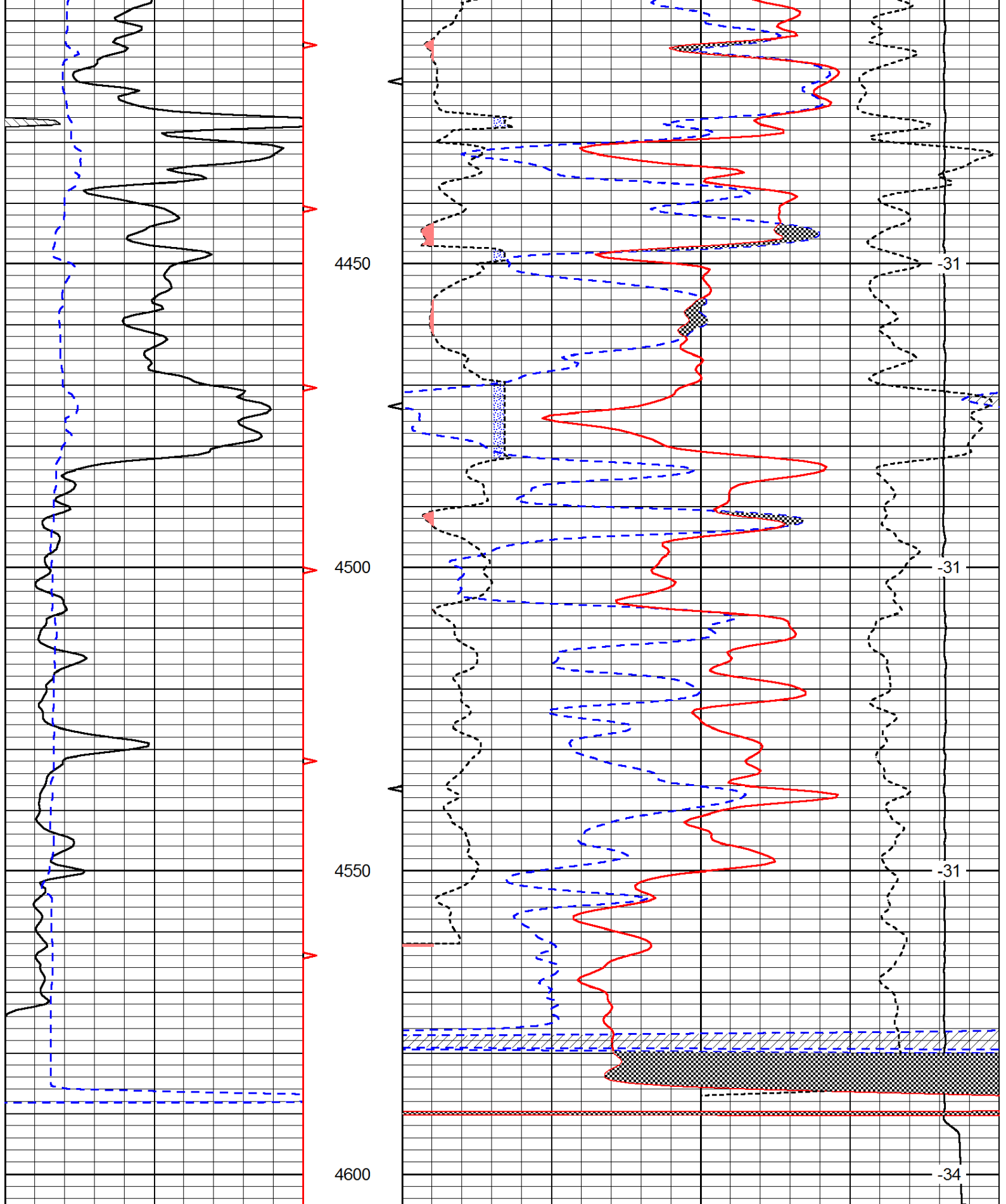
0	Gamma Ray	150	30	Compensated Neutron (Limestone)	-10
6	Caliper (GAPI)	16	30	Compensated Density (Limestone)	-10
2.625	DGA	3.425	-0.25	Correction	0.25
15000			Line Tension		0
					LSPD











0	Gamma Ray	150
6	Caliper (GAPI)	16

30	Compensated Neutron (Limestone)	-10		
30	Compensated Density (Limestone)	-10		
2.625	DGA	3.425 -0.25	Correction	0.25
15000	Line Tension			0

