



DIGITAL LOG (785) 625-3858

Dual Induction Log

15-135-24,404-00-01

API No.

Company Berexco LLC

Well Randa No. 1

Field

County Ness

State

Kansas

Location

SW NE NE SE
2,200' FSL & 350' FEL

Other Services
CNL/CDL
MEL

Sec: 4 Twp: 16S Rge: 25W

Permanent Datum Ground Level

Kelly Bushing

Elevation 2536

Log Measured From Kelly Bushing

12 Ft. Above Perm. Datum

K.B. 2548
D.F.
G.L. 2536

Drilling Measured From Kelly Bushing

Date 4/20/2012

Run Number One

Depth Driller 4600

Depth Logger 4592

Bottom Logged Interval 4591

Top Log Interval 250

Casing Driller 8.625 @ 258

Casing Logger 257

Bit Size 7.875

Type Fluid in Hole Chemical

Salinity,ppm CL 2000

Density / Viscosity 9.5 48

pH / Fluid Loss 9.0 9.2

Source of Sample Flowline

Rm @ Meas. Temp .95 @ 69

Rmf @ Meas. Temp .71 @ 69

Rmc @ Meas. Temp 1.28 @ 69

Source of Rmf / Rmc Charts

Rm @ BHT .54 @ 122

Operating Rig Time 4 Hours

Max Rec. Temp. F 122

Equipment Number 10

Location Hays

Recorded By J. Long

Witnessed By Bruce Meyer

<<< Fold Here >>>

All interpretations are opinions based on inferences from electrical or other measurements and we cannot and do not guarantee the accuracy or correctness of any interpretation, and we shall not, except in the case of gross or willful negligence on our part, be liable or responsible for any loss, costs, damages, or expenses incurred or sustained by anyone resulting from any interpretation made by any of our officers, agents or employees. These interpretations are also subject to our general terms and conditions set out in our current Price Schedule.

Comments

Thank you for using Log-Tech, Inc.
(785) 625-3858

Arnold, 2 West to I Road, 3 1/2 North, West Into

Database File: c:\warrior\data\berexco_randa no. 1\berexco_randa_1hd.db
Dataset Pathname: dil\berestck
Presentation Format: dil2in
Dataset Creation: Fri Apr 20 18:29:51 2012
Charted by: Depth in Feet scaled 1:600

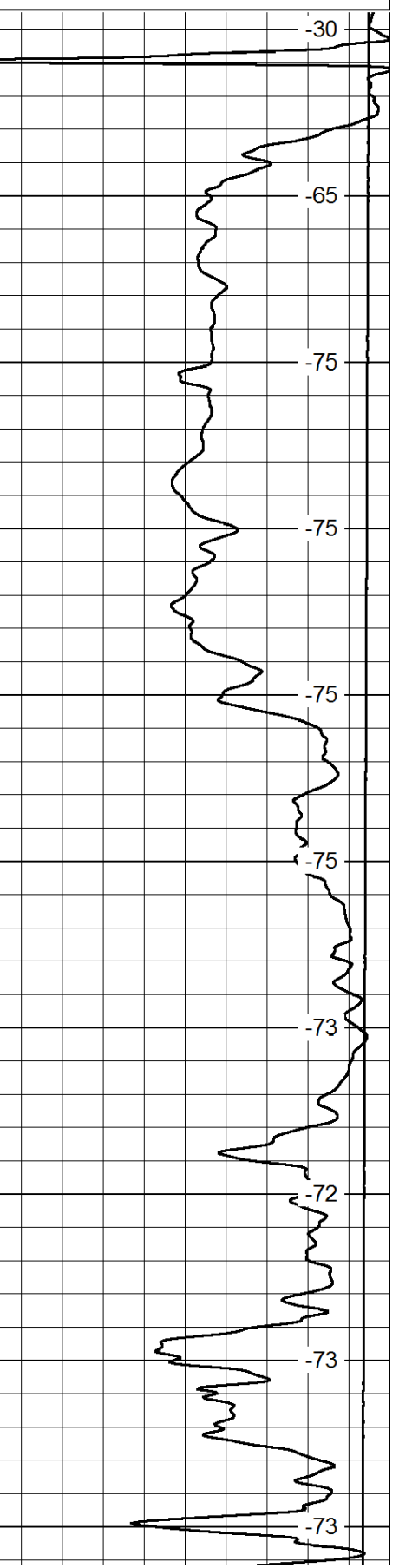
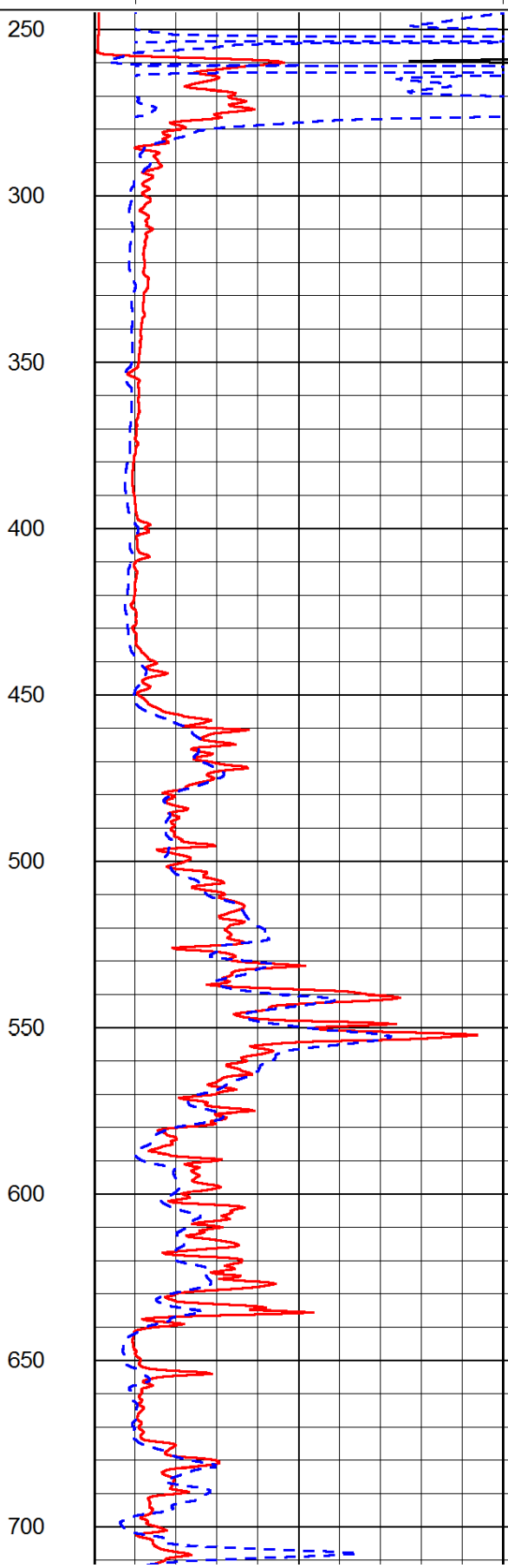
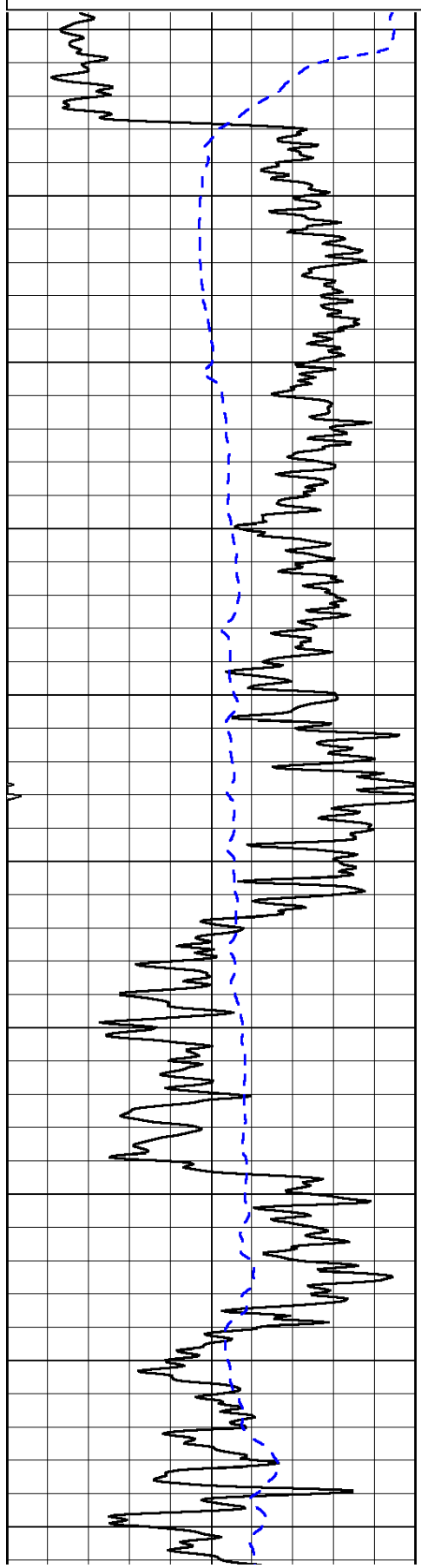
0	Gamma Ray	150
-200	SP (mV)	0

0	Shallow Resistivity	50
0	Deep Resistivity	50

LSPD

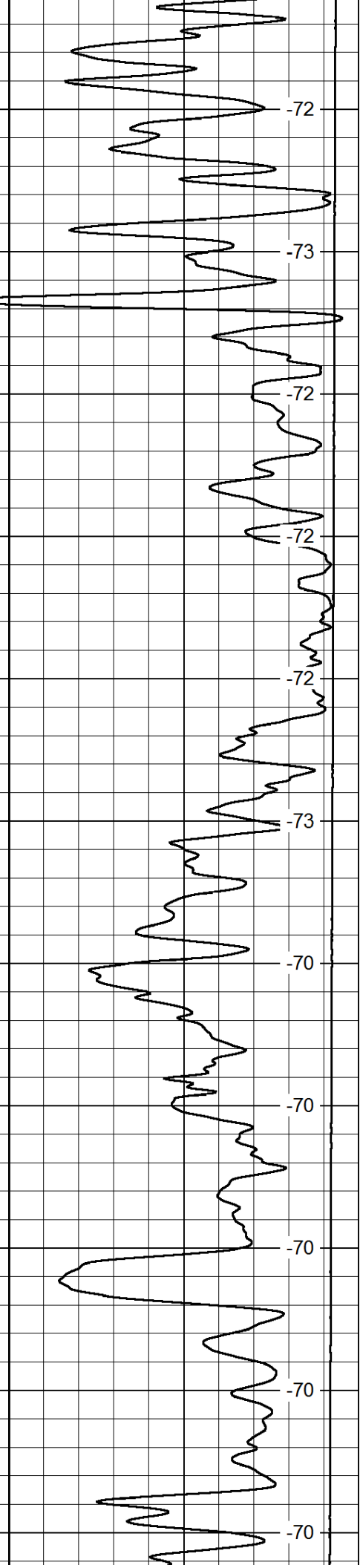
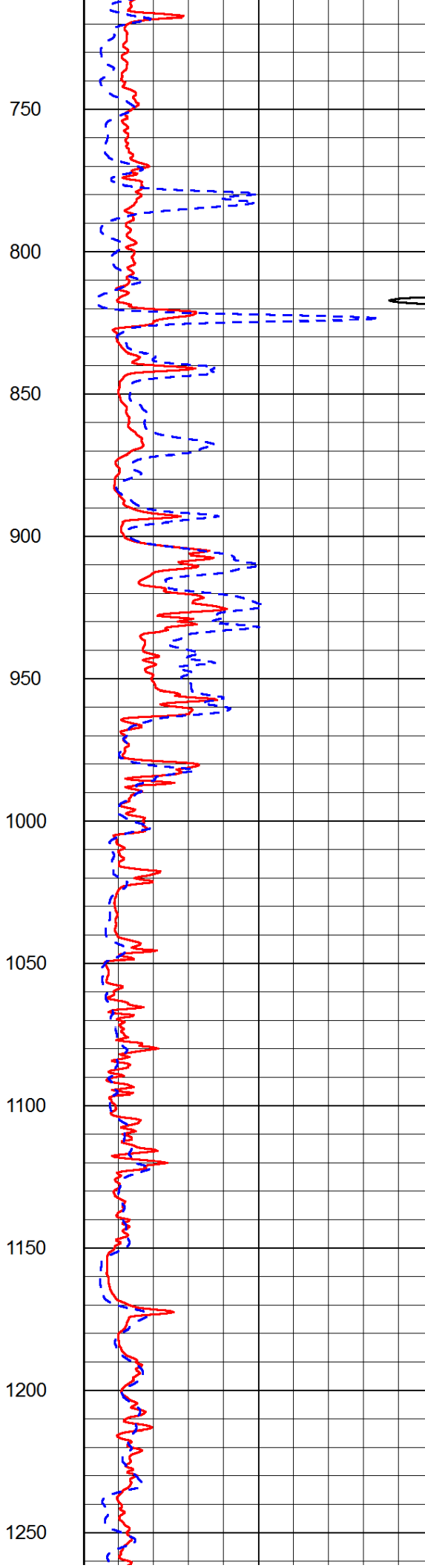
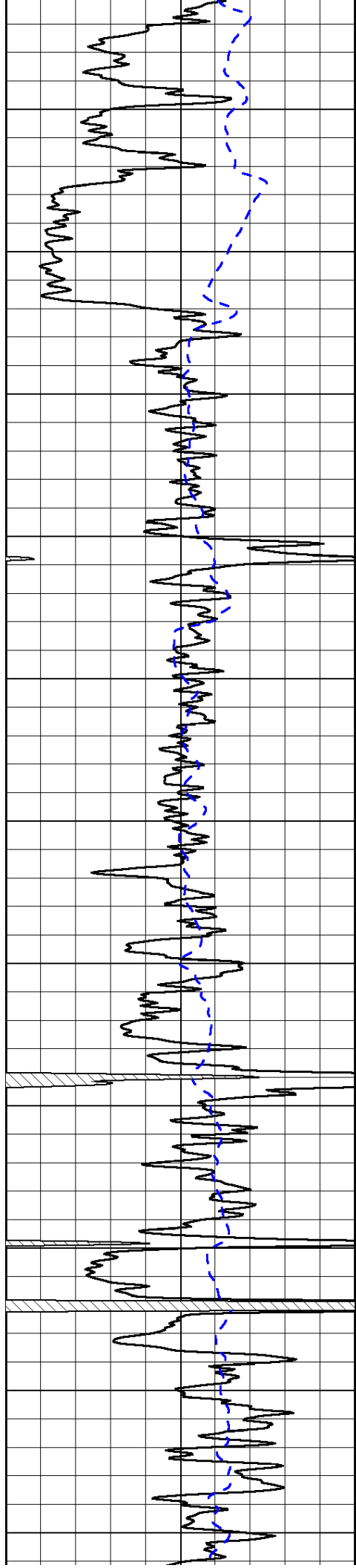
1000	Conductivity	0
15000	Line Tension	0

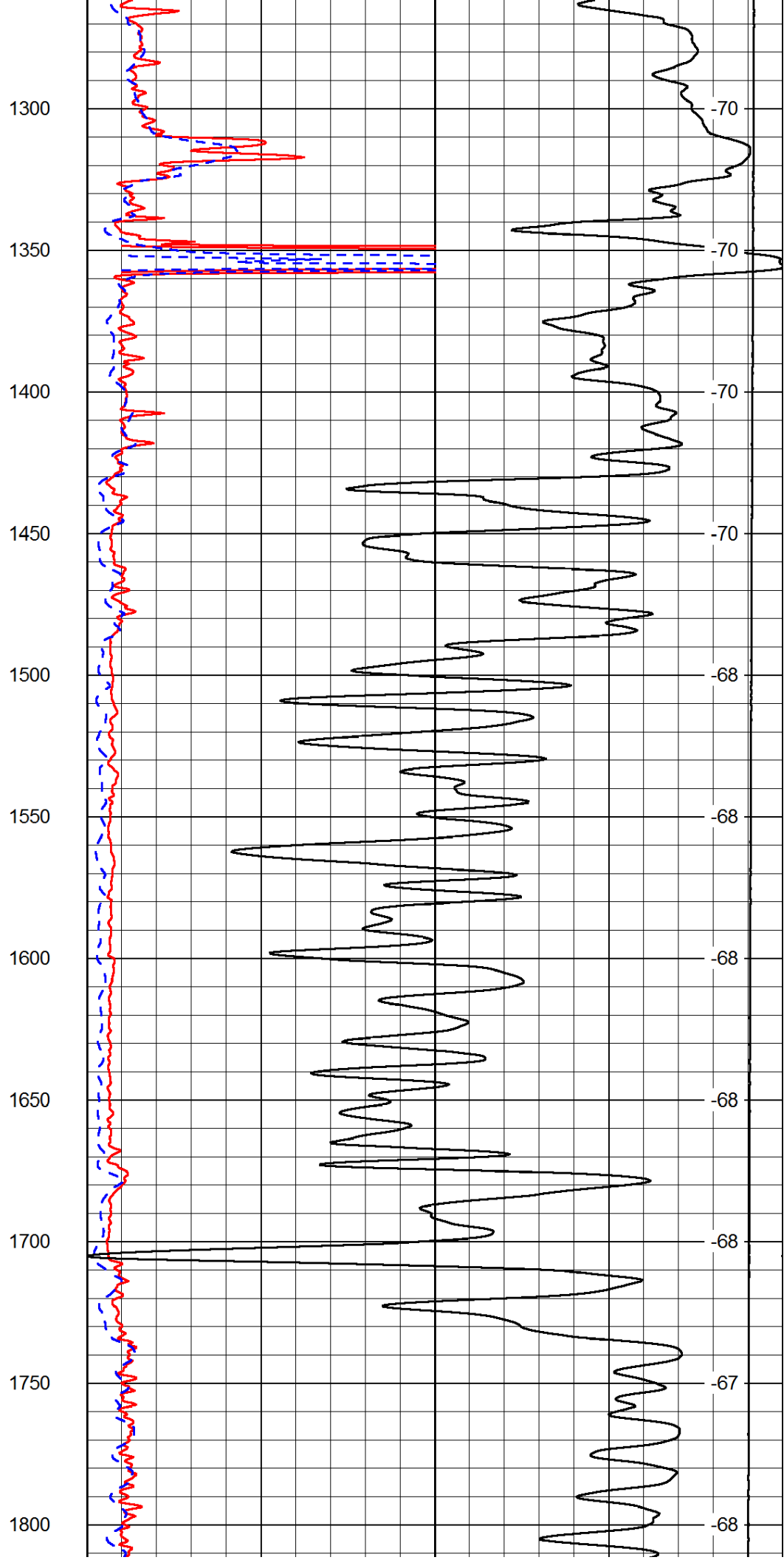
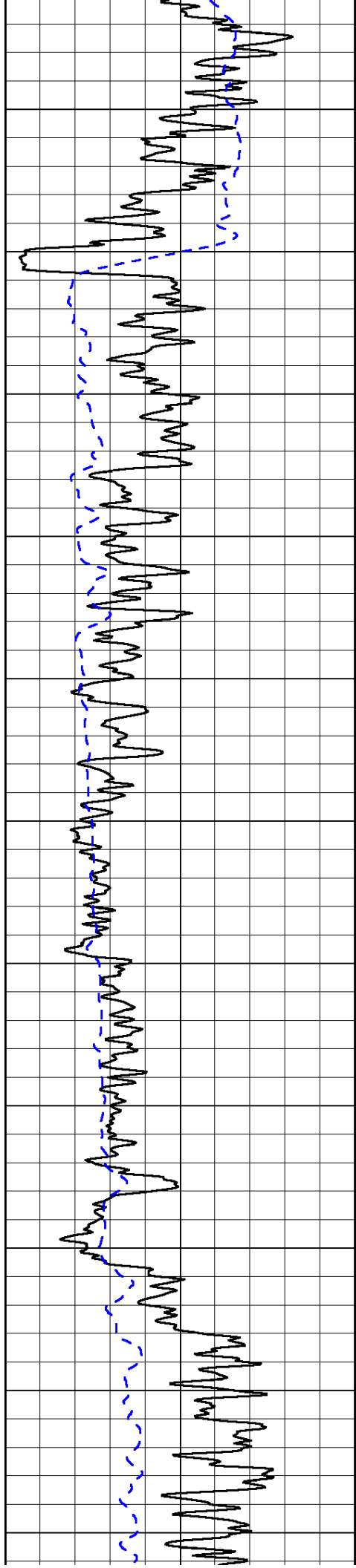
50	Shallow Resistivity	500
50	Deep Resistivity	500

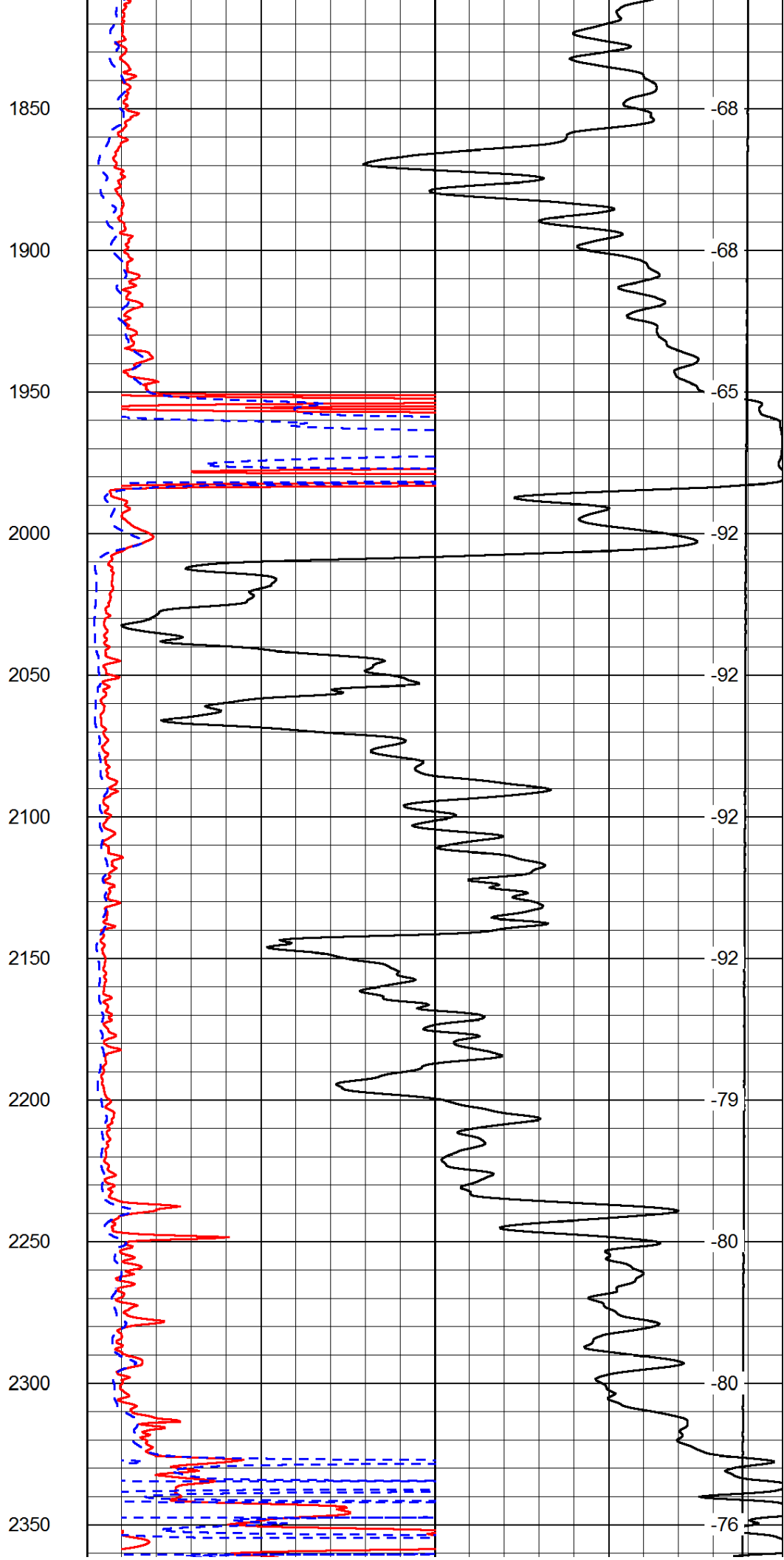
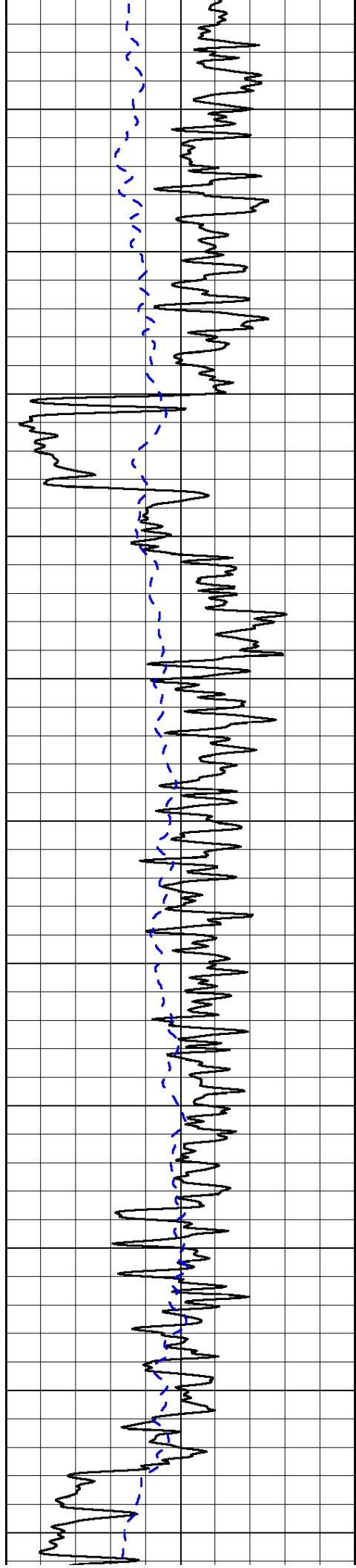


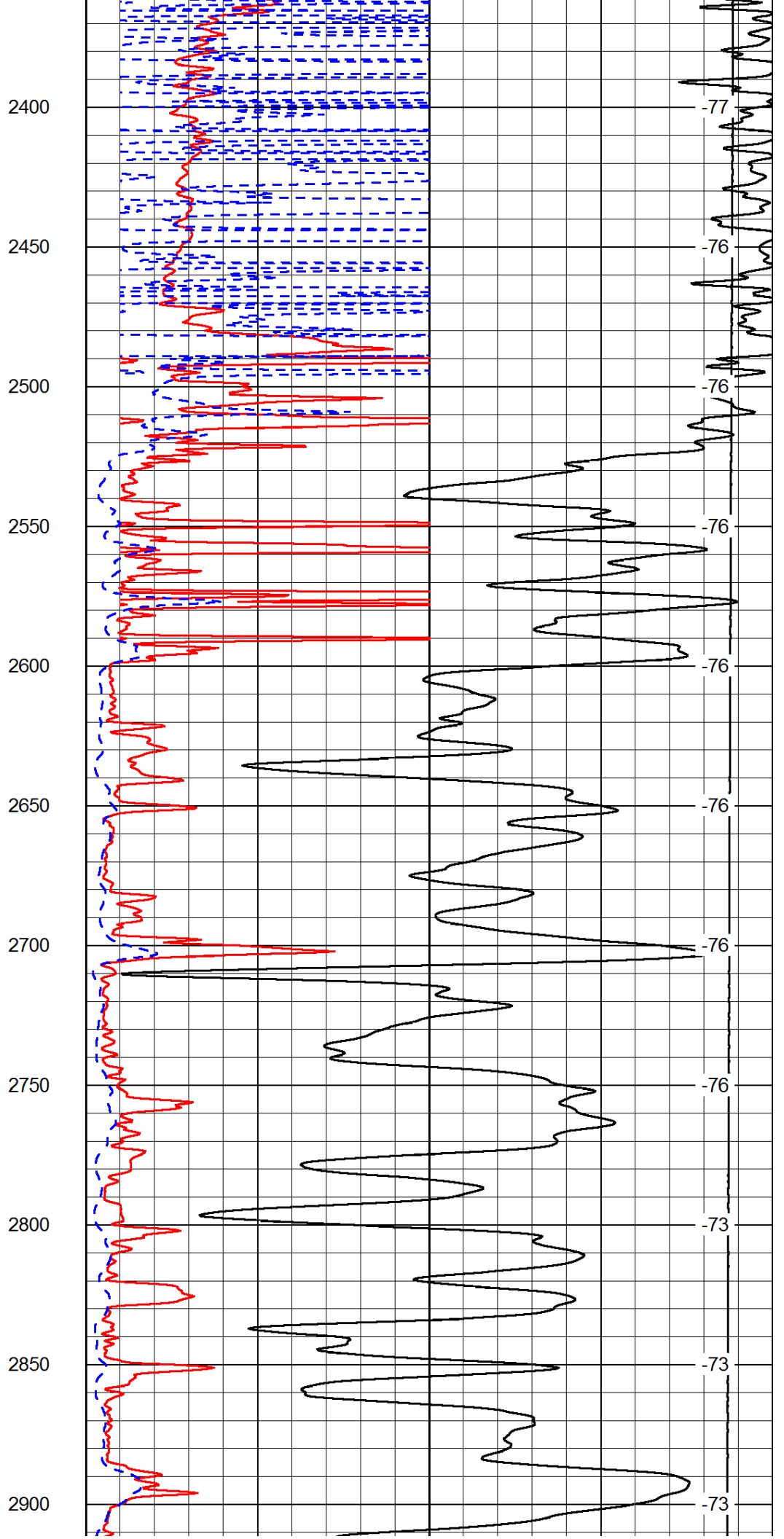
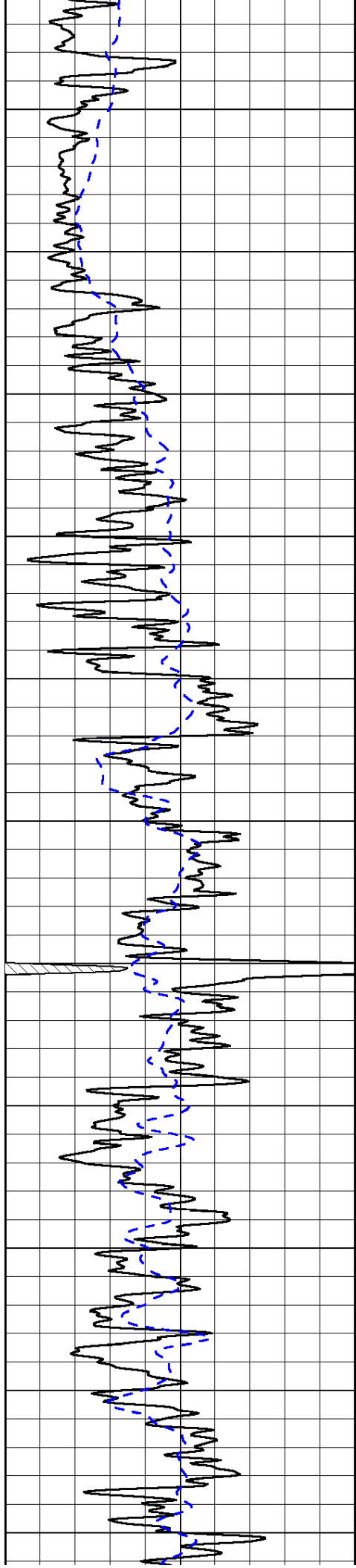
250
300
350
400
450
500
550
600
650
700

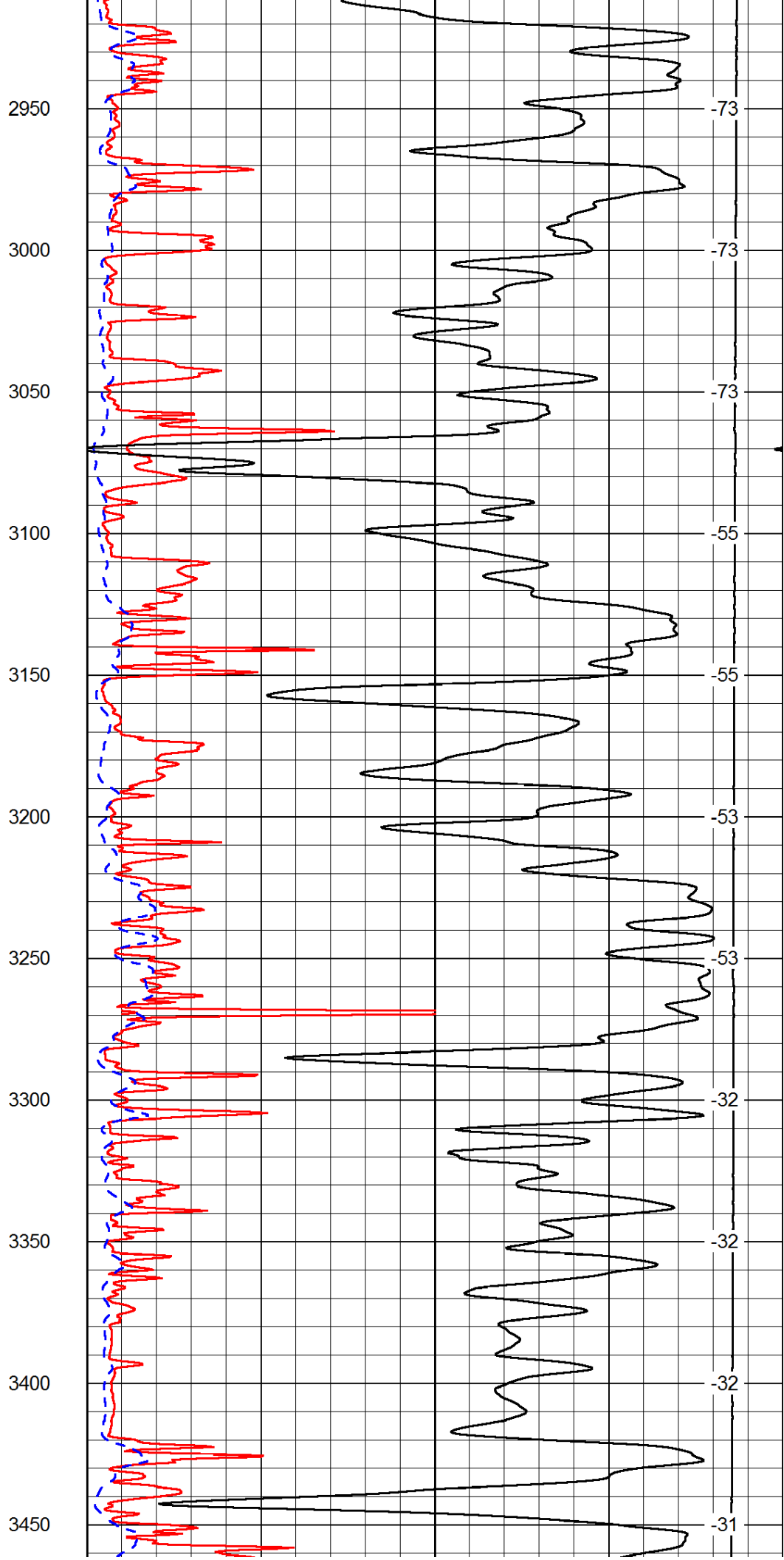
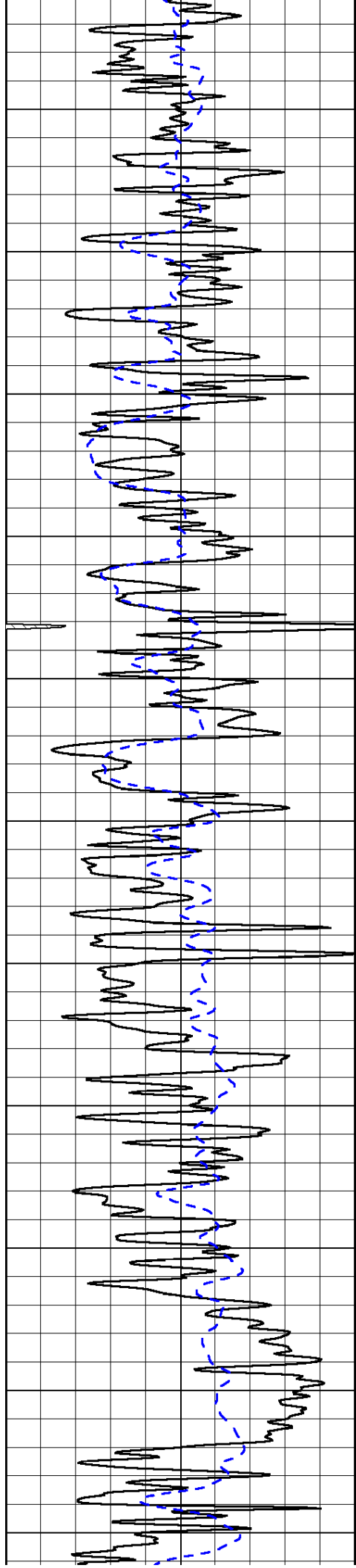
-30
-65
-75
-75
-75
-75
-73
-72
-73
-73

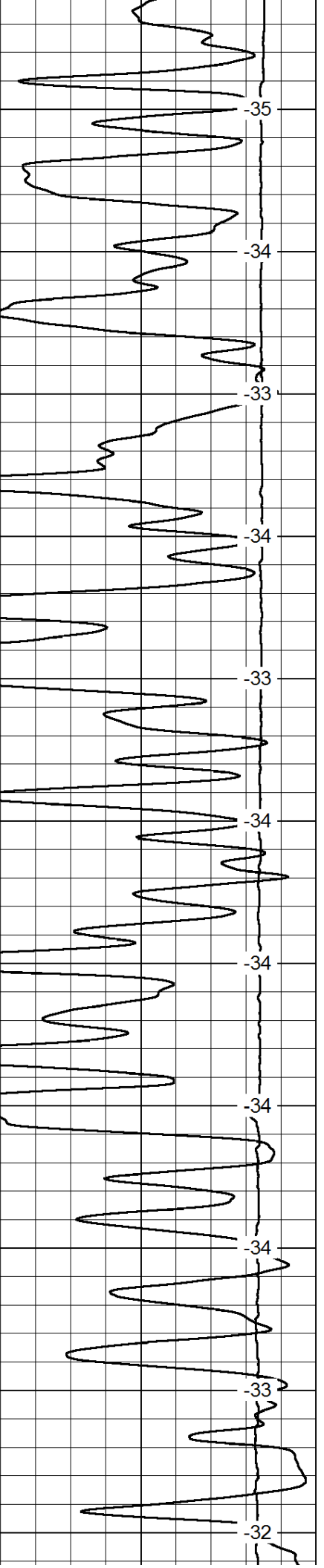
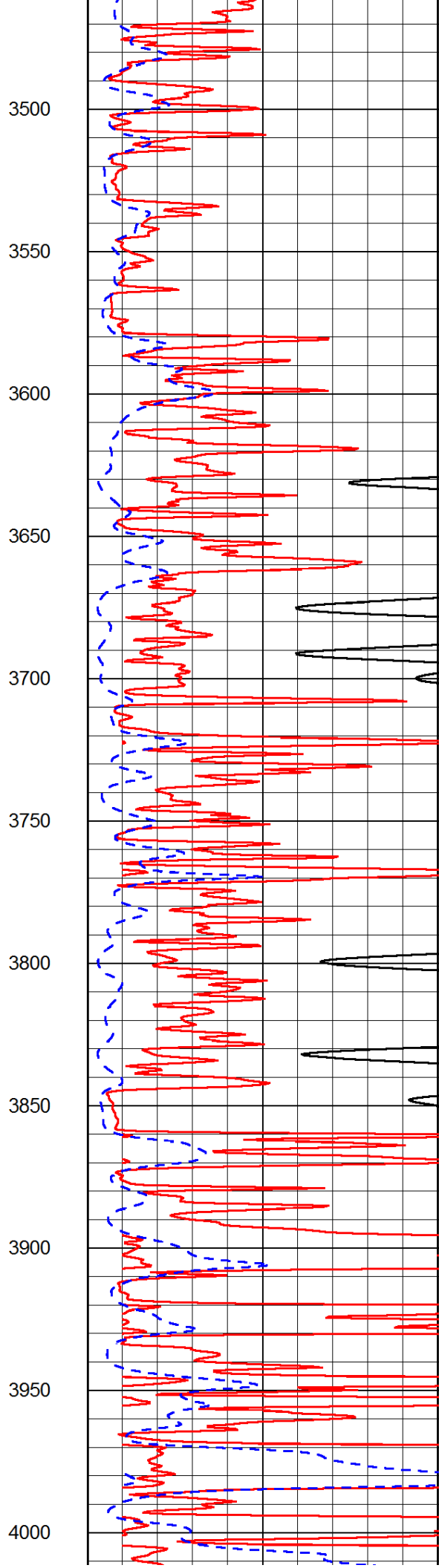
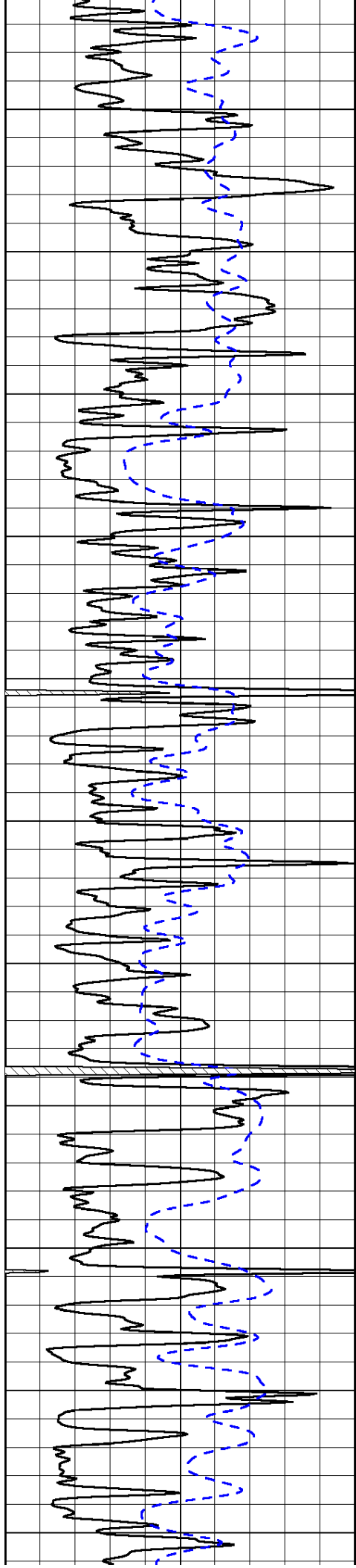


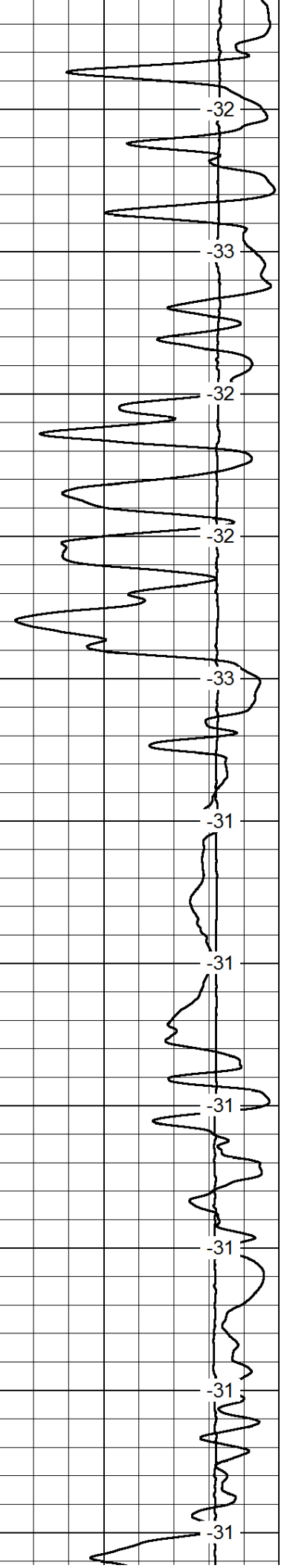
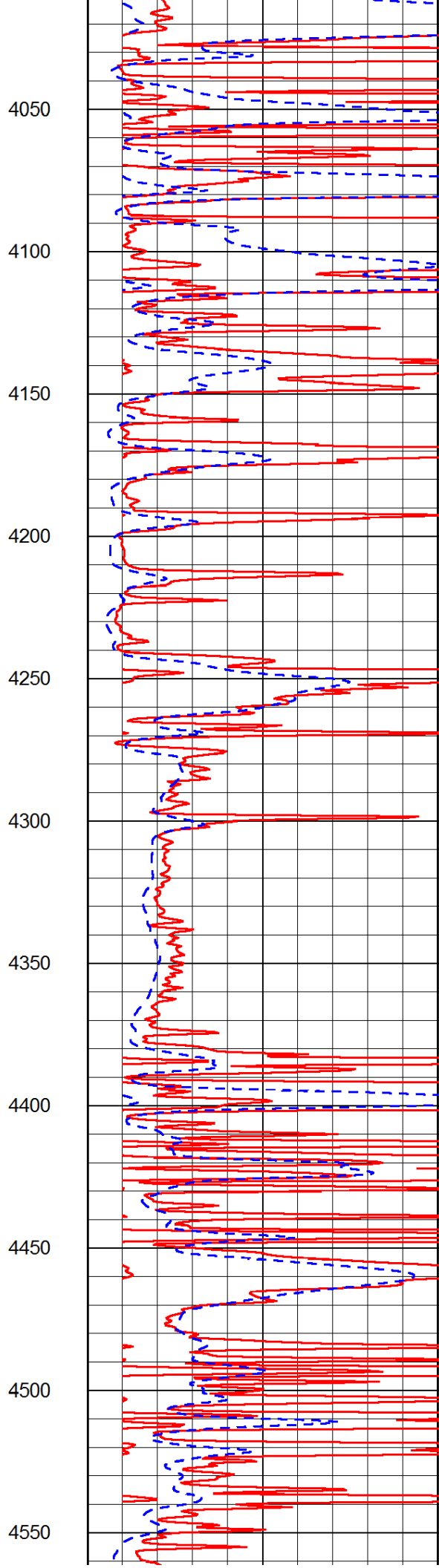
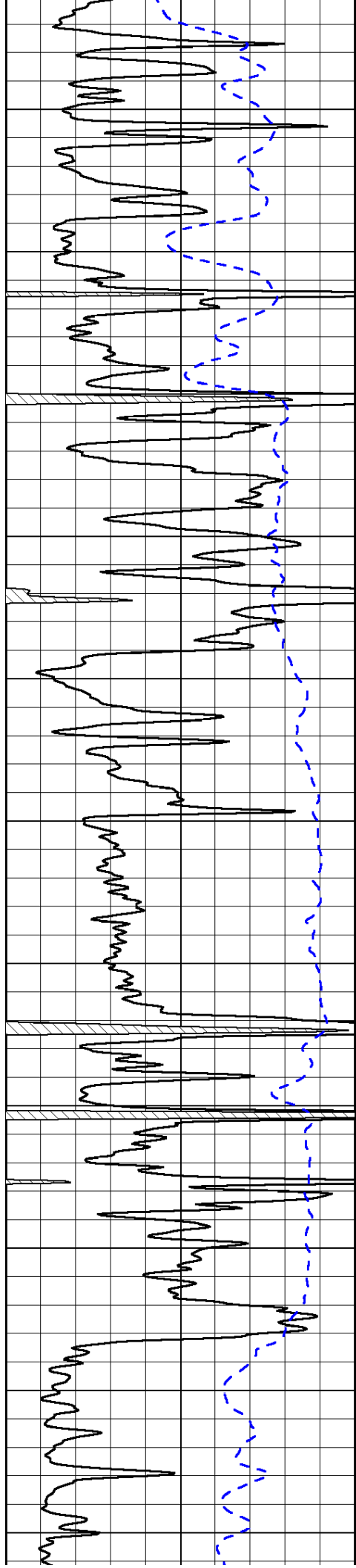


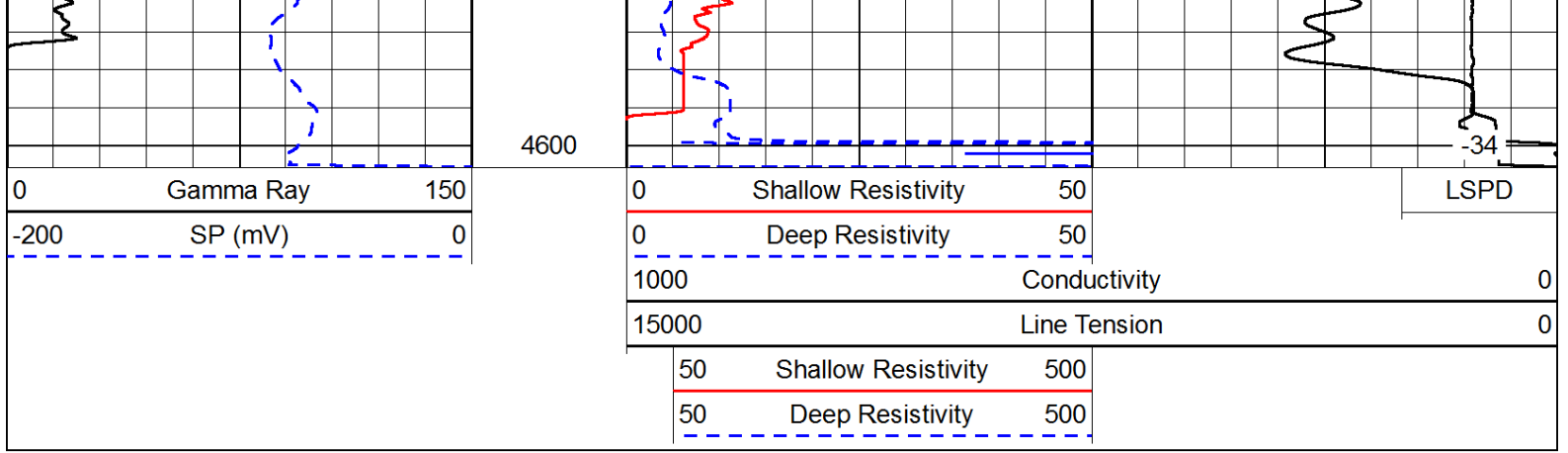




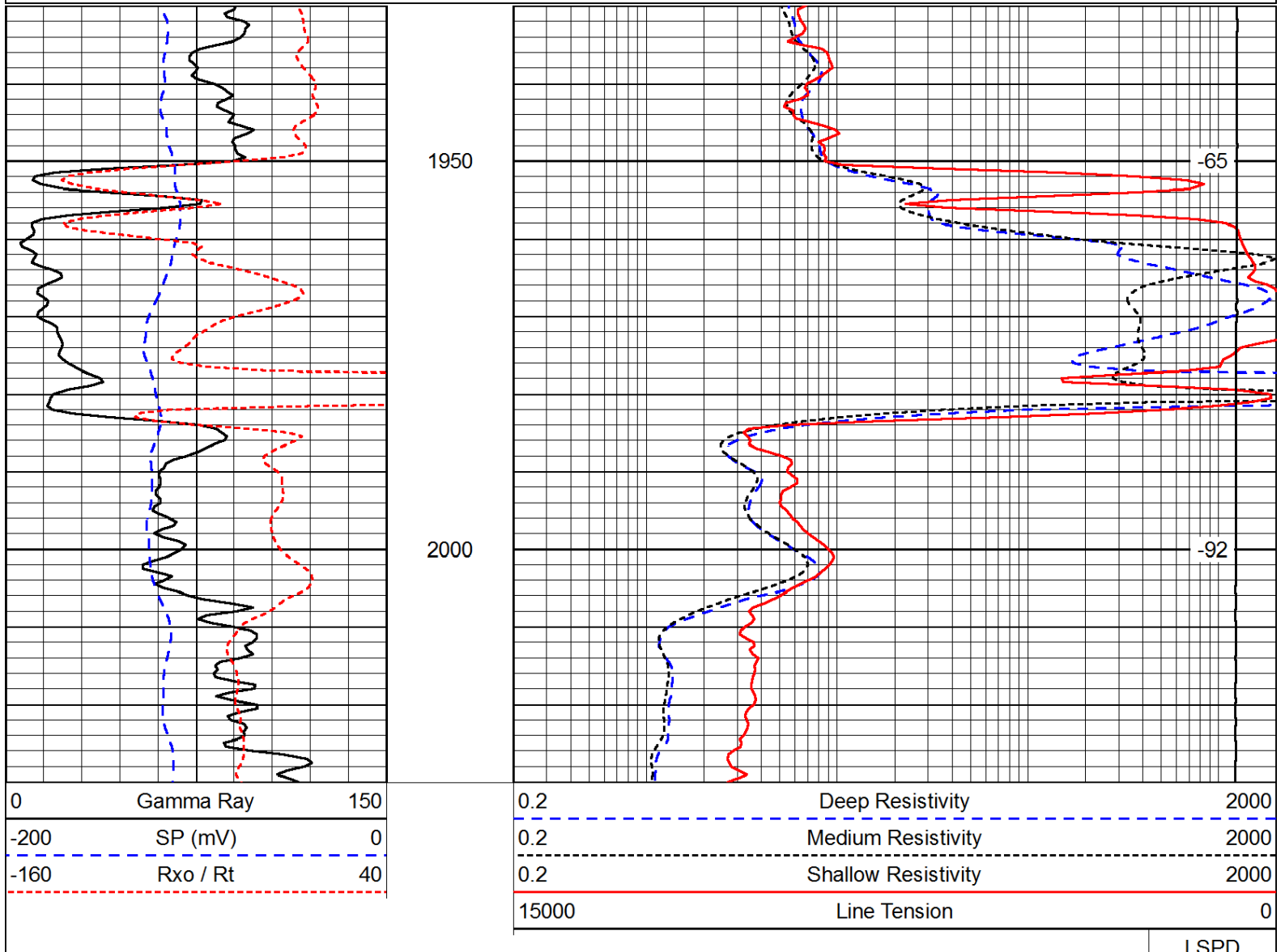
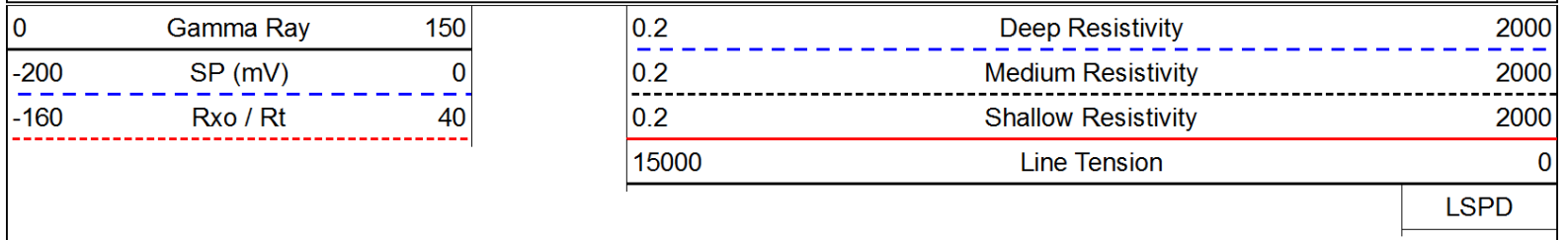








Database File: c:\warrior\data\berexco_randa no. 1\berexco_randa_1hd.db
 Dataset Pathname: dil/berestck
 Presentation Format: dil
 Dataset Creation: Fri Apr 20 18:29:51 2012
 Charted by: Depth in Feet scaled 1:240

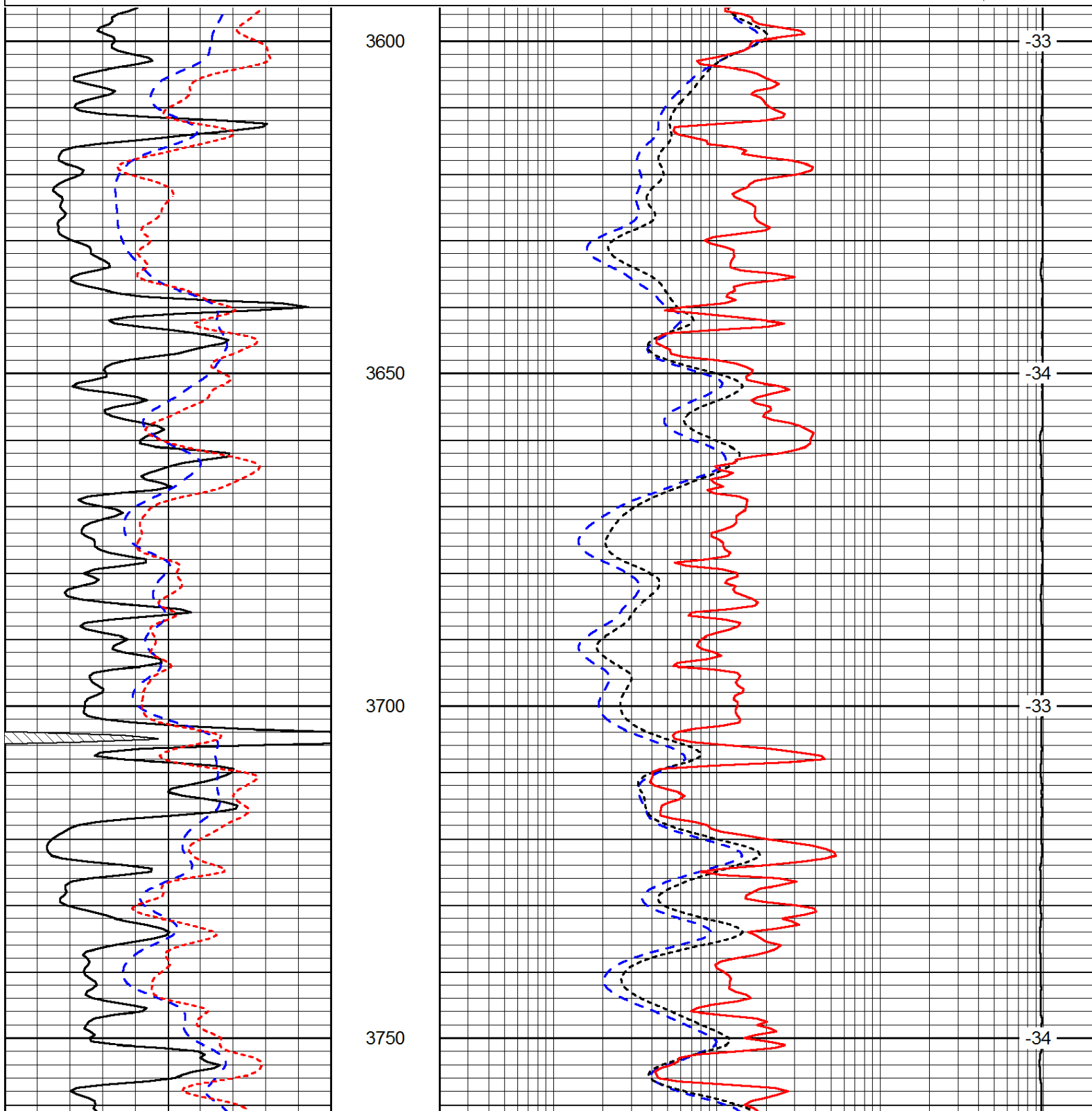


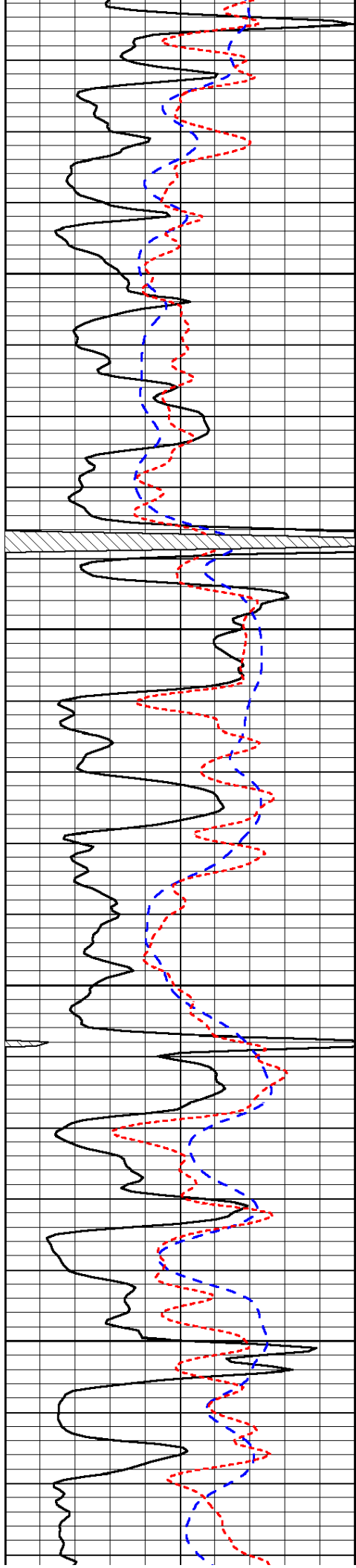
Database File: c:\warrior\data\berexco_randa no. 1\berexco_randa_1hd.db
 Dataset Pathname: dil/berestck
 Presentation Format: dil
 Dataset Creation: Fri Apr 20 18:29:51 2012
 Charted by: Depth in Feet scaled 1:240

0	Gamma Ray	150
-200	SP (mV)	0
-160	Rxo / Rt	40

0.2	Deep Resistivity	2000
0.2	Medium Resistivity	2000
0.2	Shallow Resistivity	2000
15000	Line Tension	0

LSPD



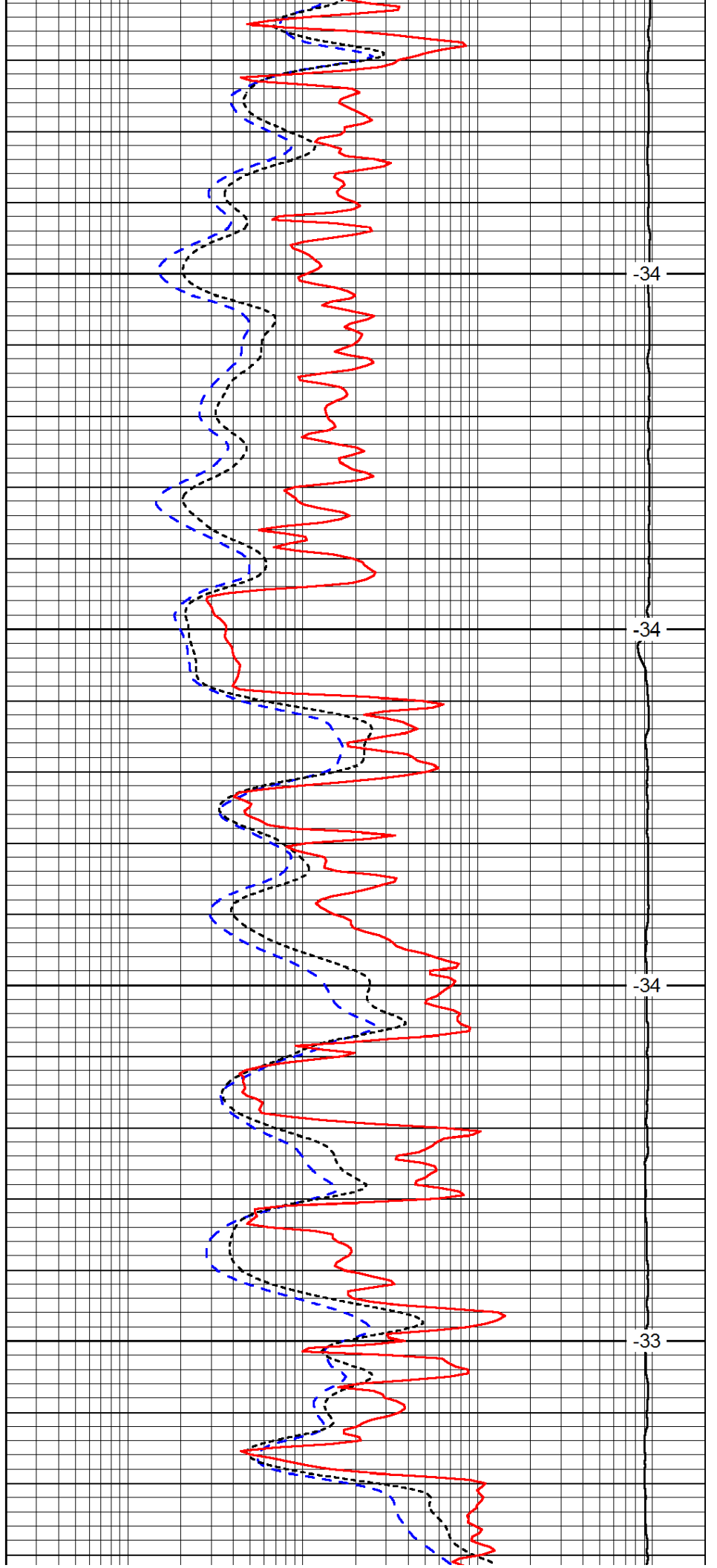


3800

3850

3900

3950

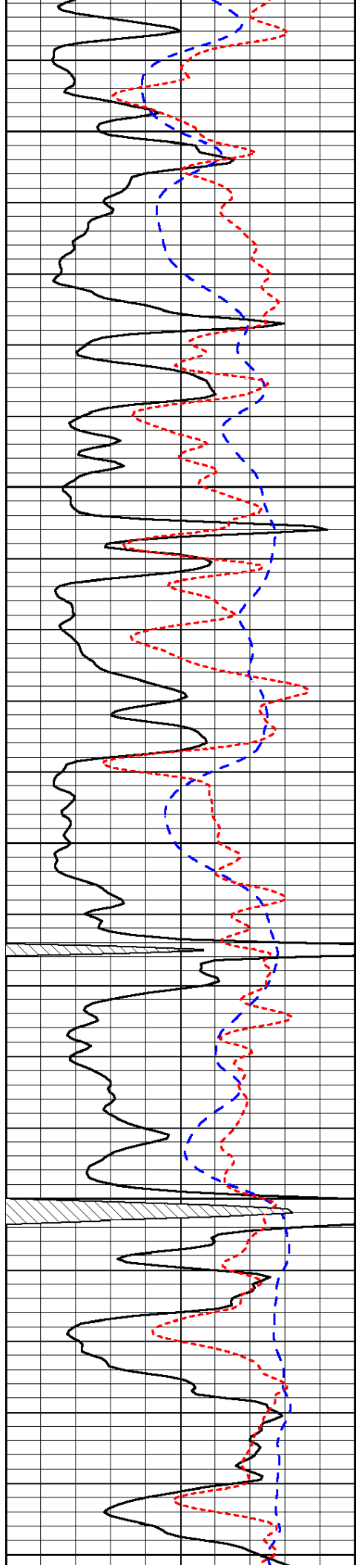


-34

-34

-34

-33



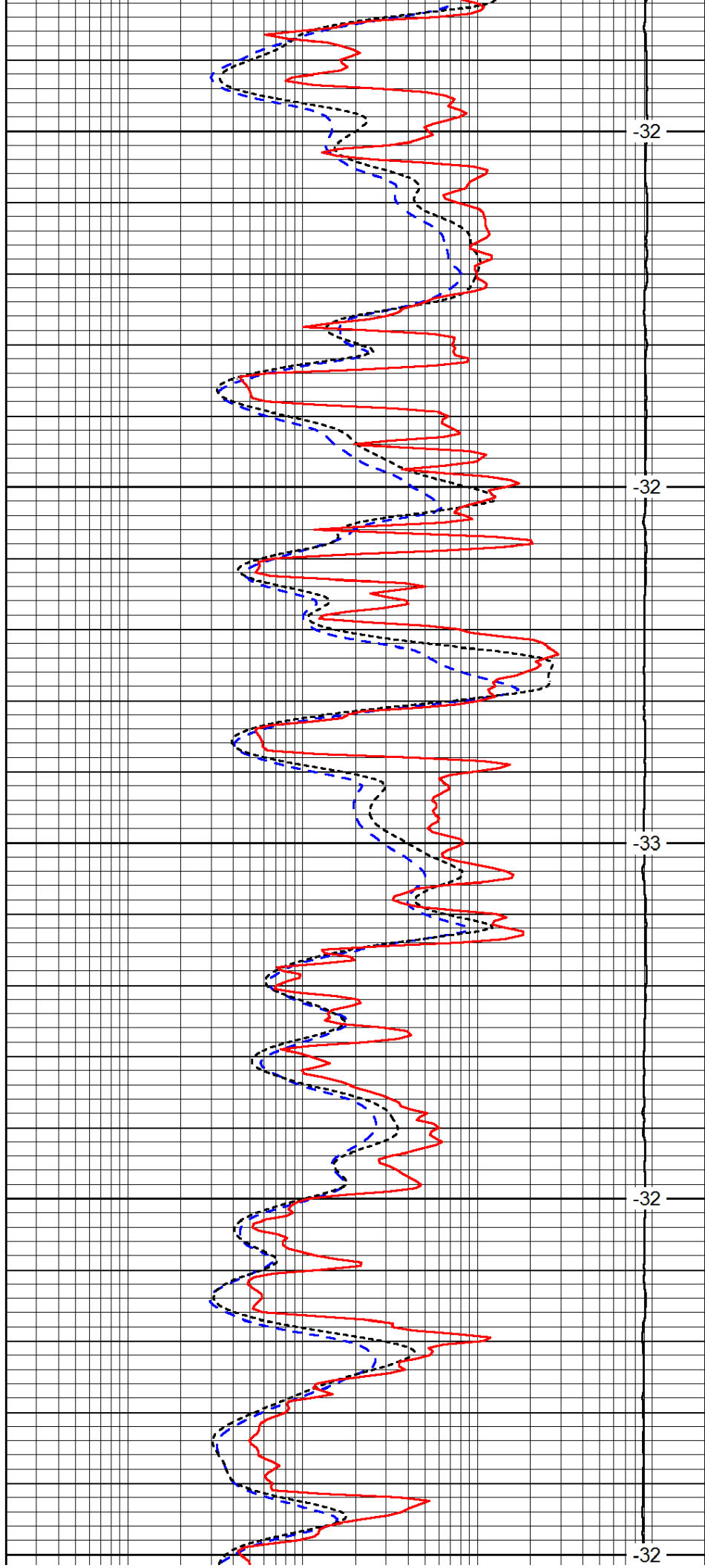
4000

4050

4100

4150

4200



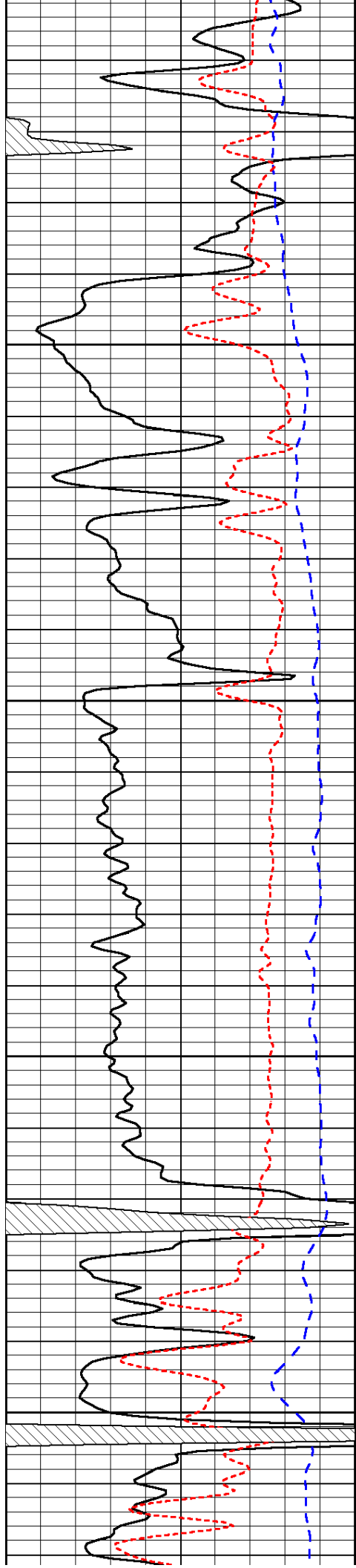
-32

-32

-33

-32

-32

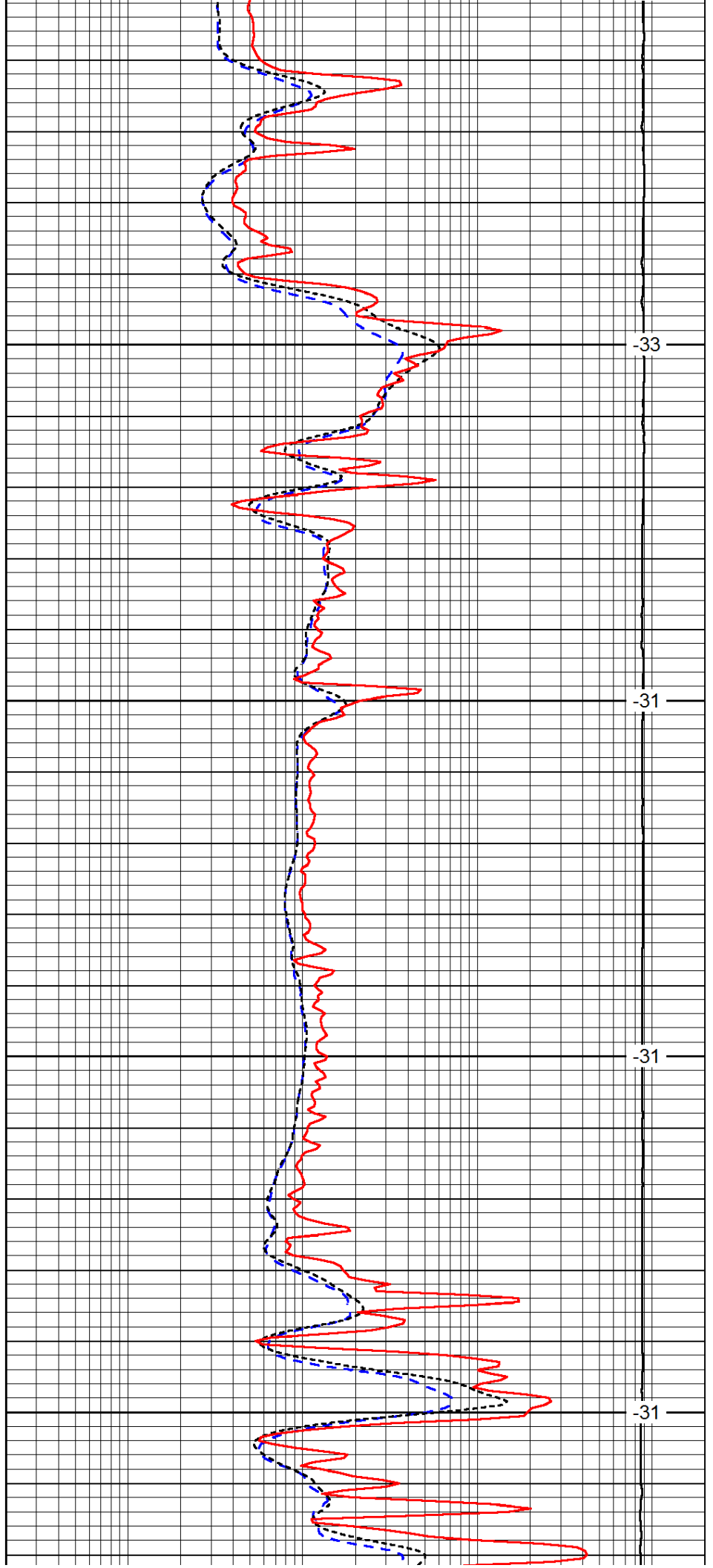


4250

4300

4350

4400

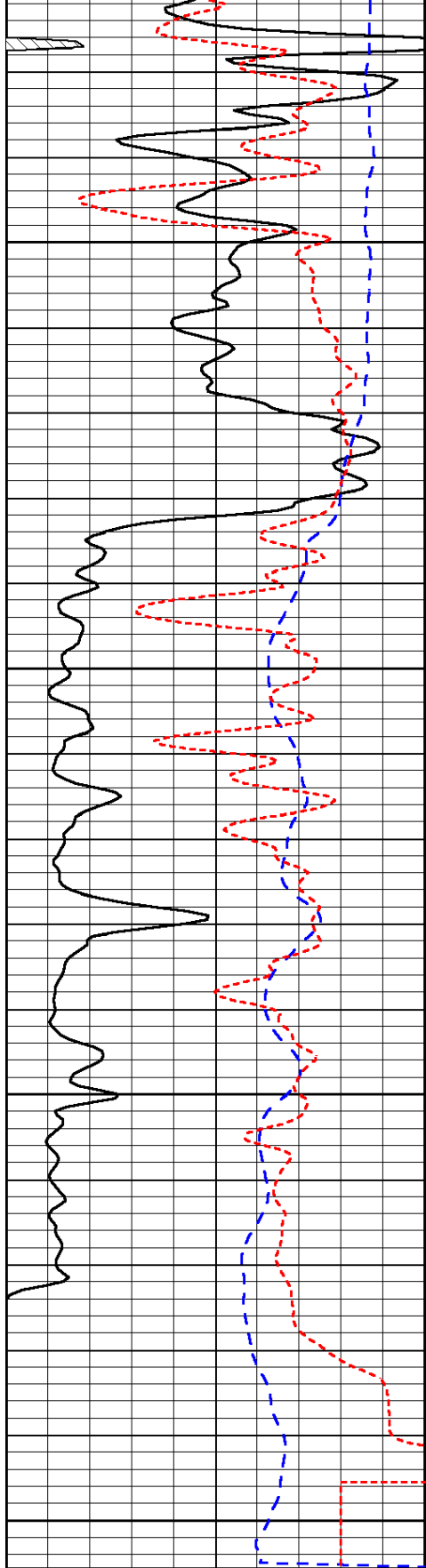


-33

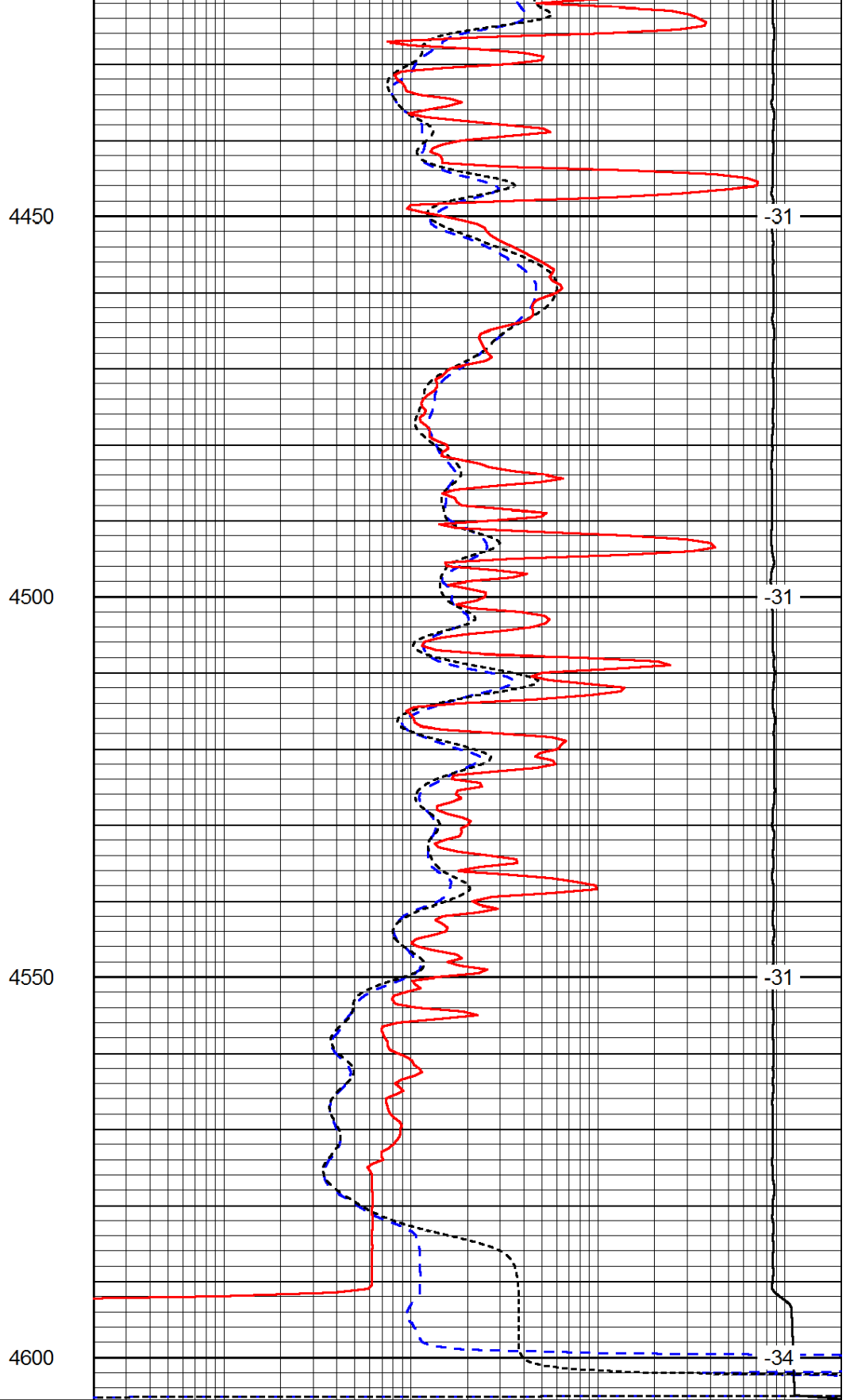
-31

-31

-31



0	Gamma Ray	150
-200	SP (mV)	0
-160	Rxo / Rt	40



0.2	Deep Resistivity	2000
0.2	Medium Resistivity	2000
0.2	Shallow Resistivity	2000
15000	Line Tension	0

LSPD