



Pioneer Energy Services

Dual Induction Log

API No.	15-007-23975-00-00		
Company	Charles N. Griffin		
Well	Janice #1		
Field	Medicine River		
County	Barber	State	Kansas
Location	330' FNL & 4290' FEL		
Sec:	9	Twp:	32S Rge: 12W
Other Services	CNL/CDL		

Permanent Datum	Ground Level	Elevation	1471
Log Measured From	Kelly Bushing	10 Ft. Above Perm. Datum	
Drilling Measured From	Kelly Bushing		
Date	12/19/2012		
Run Number	One		
Depth Driller	4680		
Depth Logger	4686		
Bottom Logged Interval	4685		
Top Log Interval	250		
Casing Driller	8.625 @ 262		
Casing Logger	263		
Bit Size	7.875		
Type Fluid in Hole	Chemical		
Salinity, ppm CL	6800		
Density / Viscosity	9.3	56	
pH / Fluid Loss	9.0	8.2	
Source of Sample	Flowline		
Rm @ Meas. Temp	0.36 @ 46		
Rmf @ Meas. Temp	0.27 @ 46		
Rmc @ Meas. Temp	0.49 @ 46		
Source of Rmf / Rmc	Charts		
Rm @ BHT	0.13 @ 125		
Operating Rig Time	4 Hours		
Max Rec. Temp. F	125		
Equipment Number	91		
Location	Hays		
Recorded By	D. Schmidt		
Witnessed By	Bruce A. Reed		

<<< Fold Here >>>

All interpretations are opinions based on inferences from electrical or other measurements and we cannot and do not guarantee the accuracy or correctness of any interpretation, and we shall not, except in the case of gross or willful negligence on our part, be liable or responsible for any loss, costs, damages, or expenses incurred or sustained by anyone resulting from any interpretation made by any of our officers, agents or employees. These interpretations are also subject to our general terms and conditions set out in our current Price Schedule.

Comments

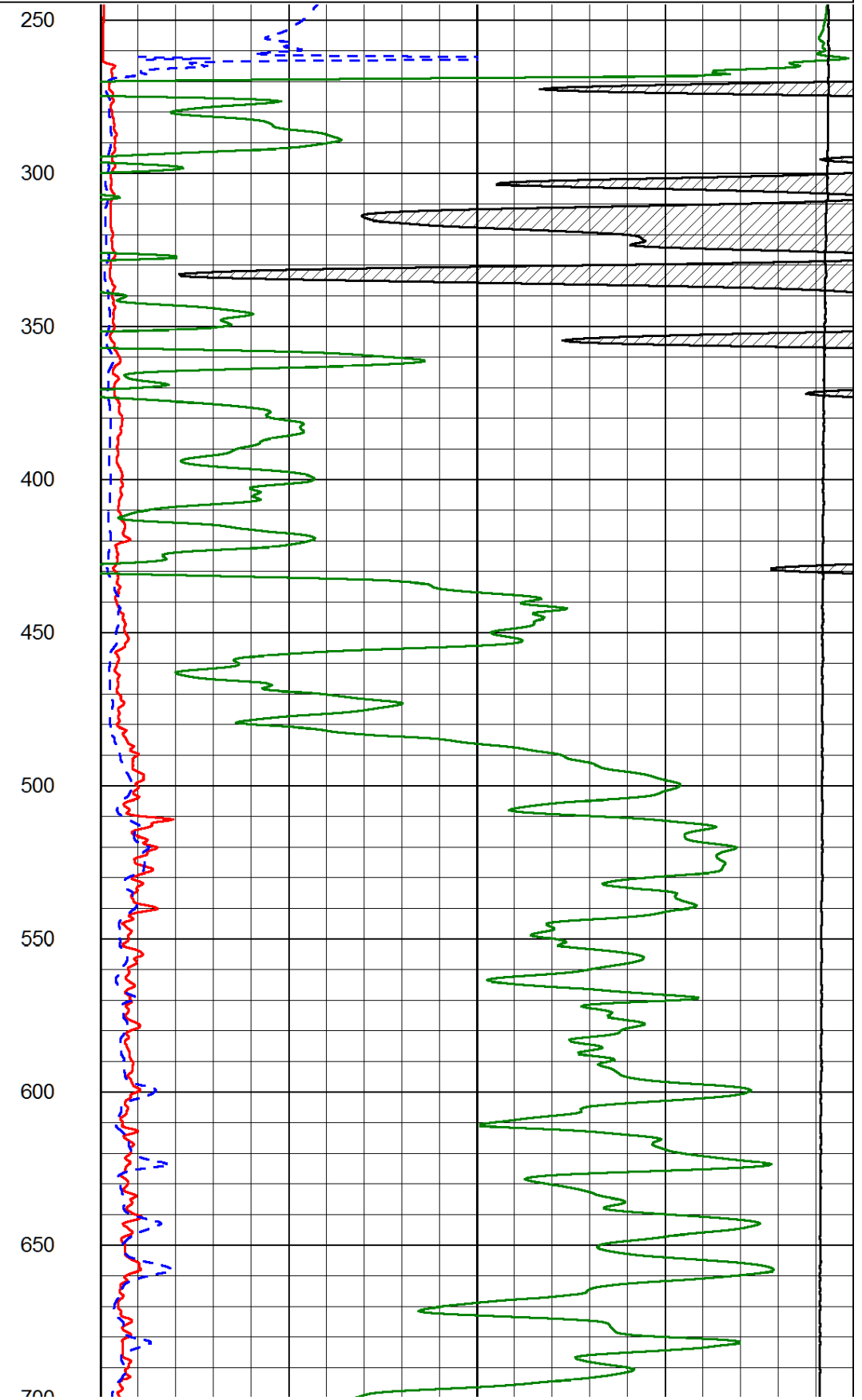
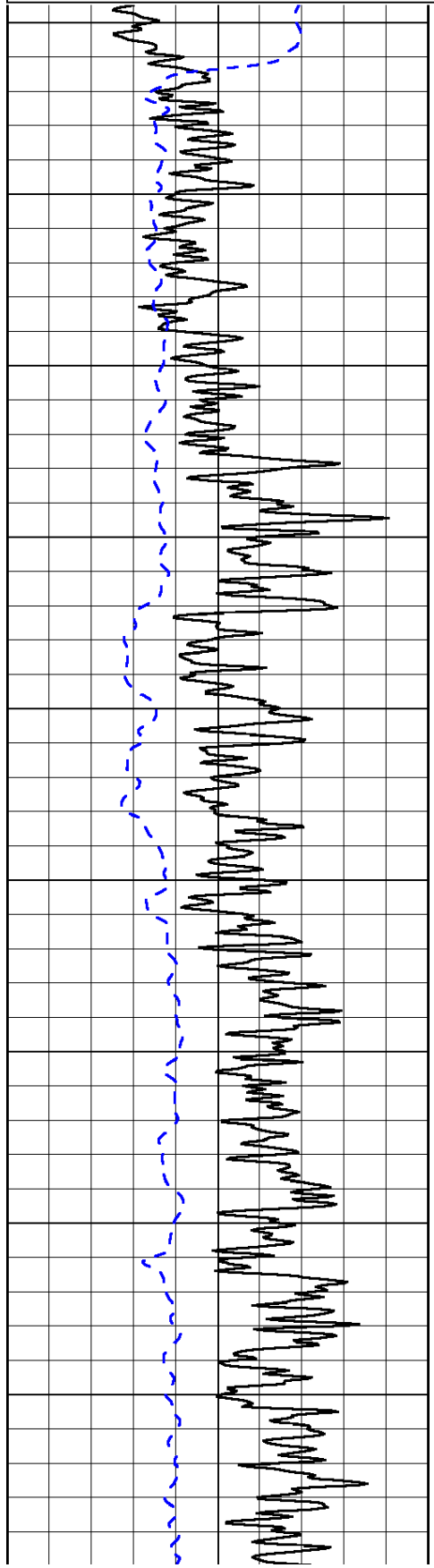
Thank you for using Log-Tech, Inc.
 (785) 625-3858
 Medicine Lodge,
 3 West to Willow Rd, 3/8 North,
 East into

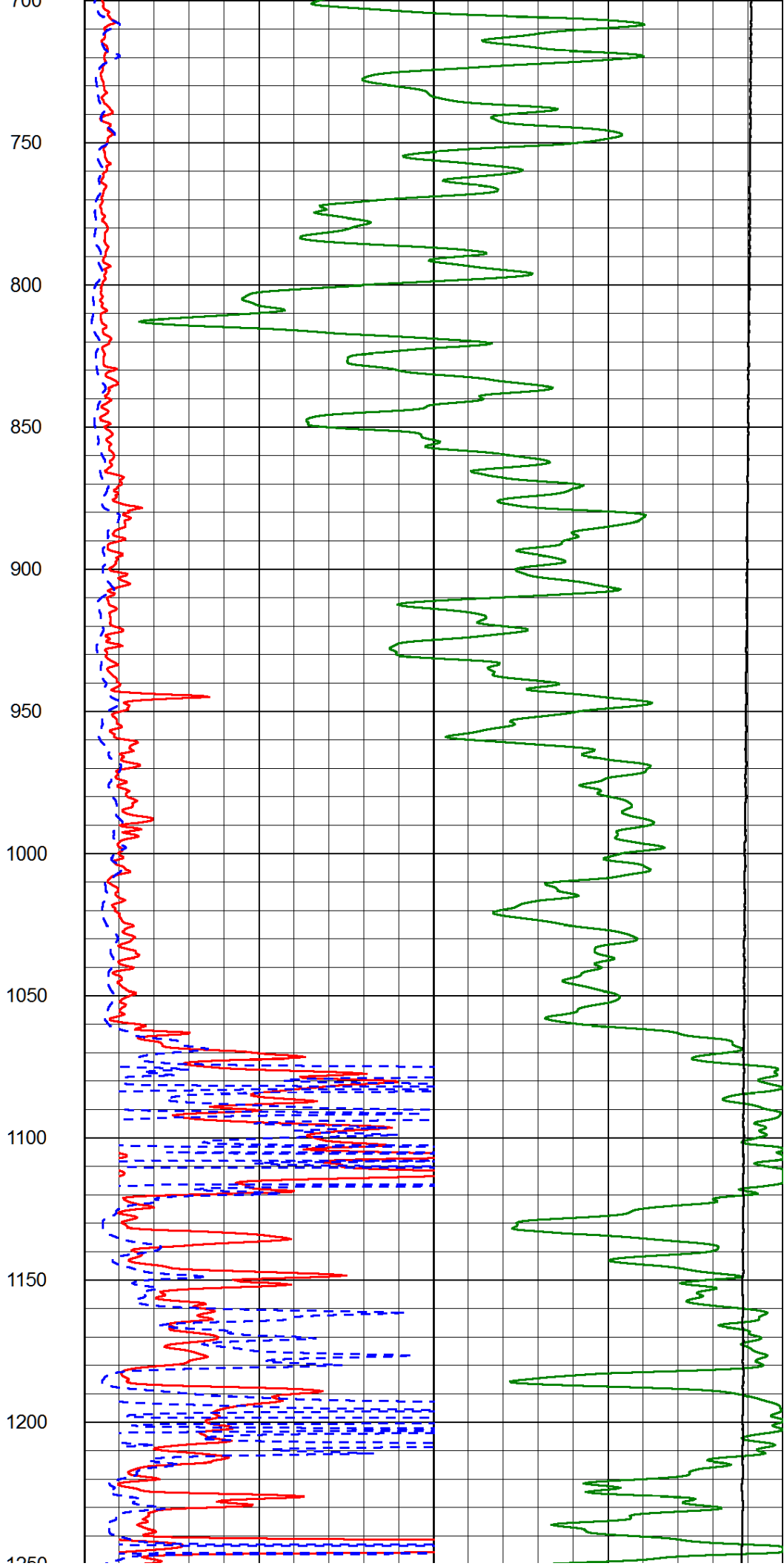
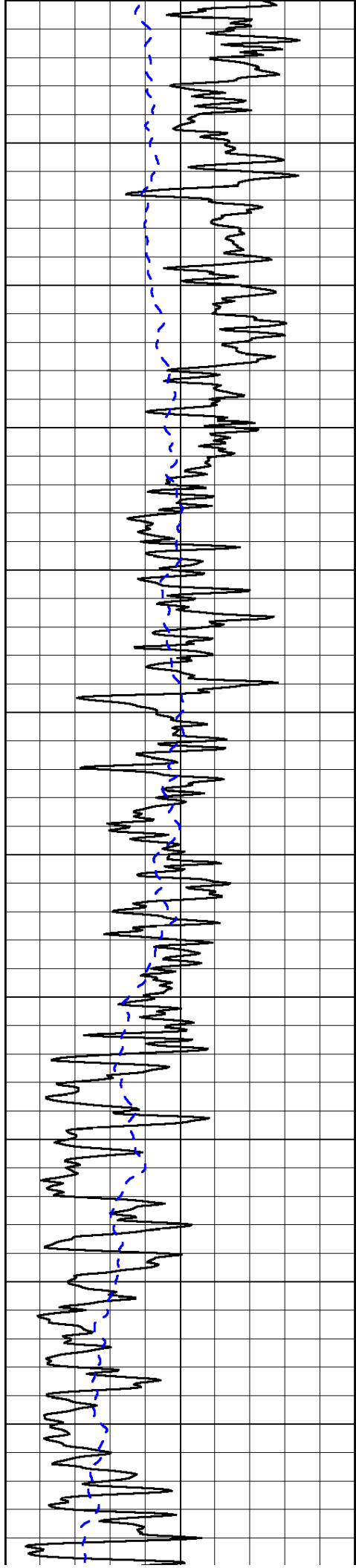
0	Gamma Ray (GAPI)	150
-200	SP (mV)	0

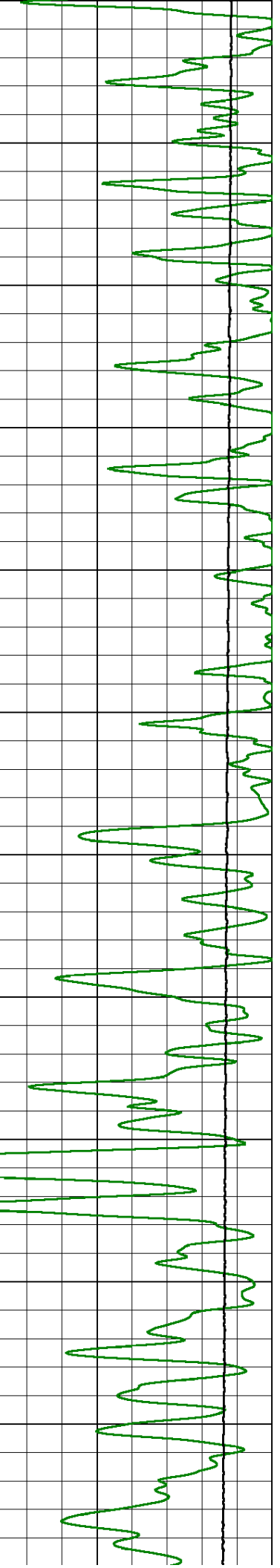
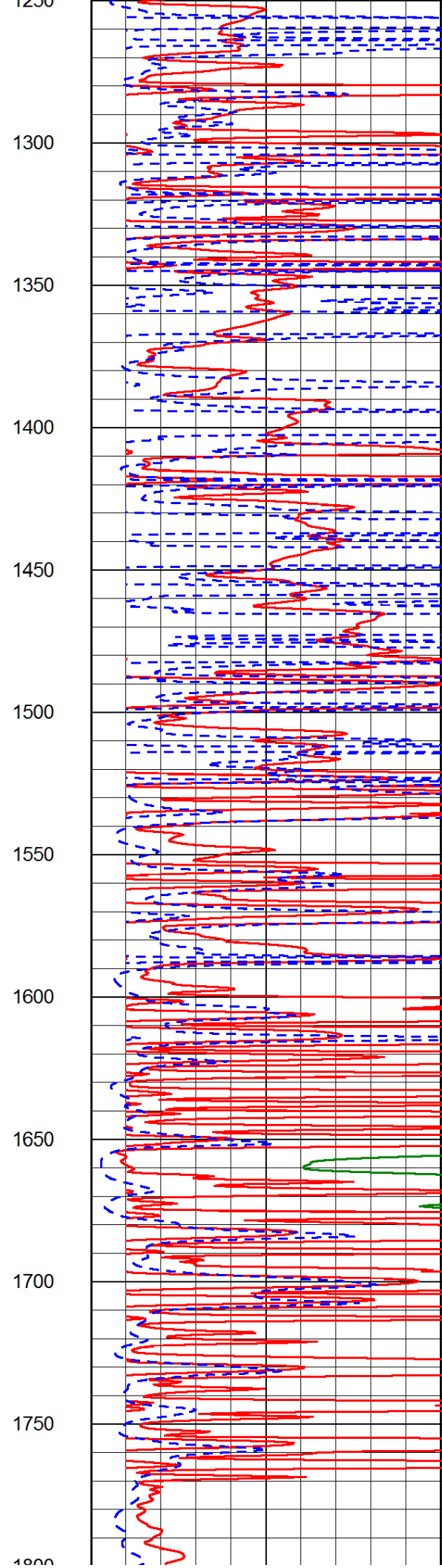
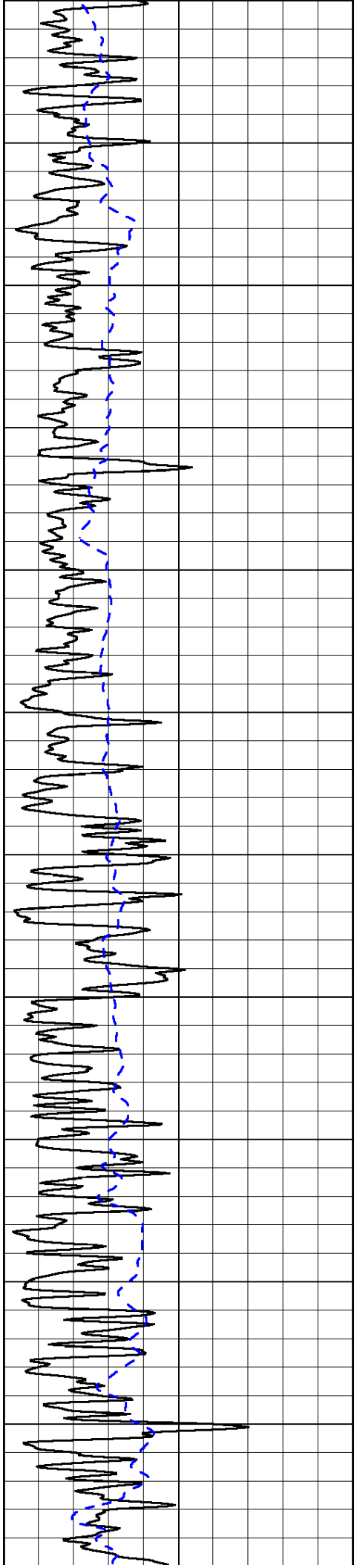
0	Shallow Resistivity (Ohm-m)	50
0	Deep Resistivity (Ohm-m)	50

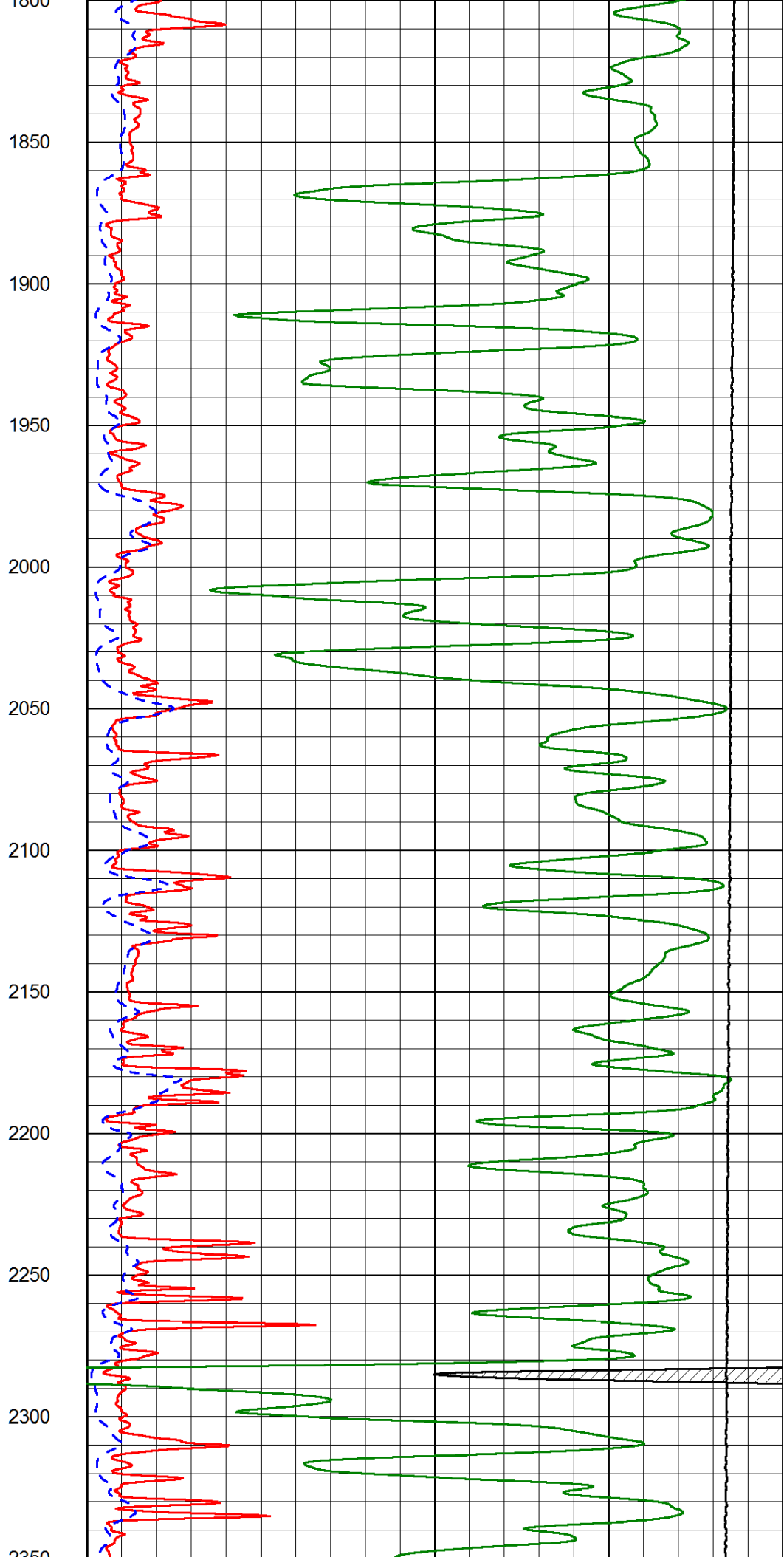
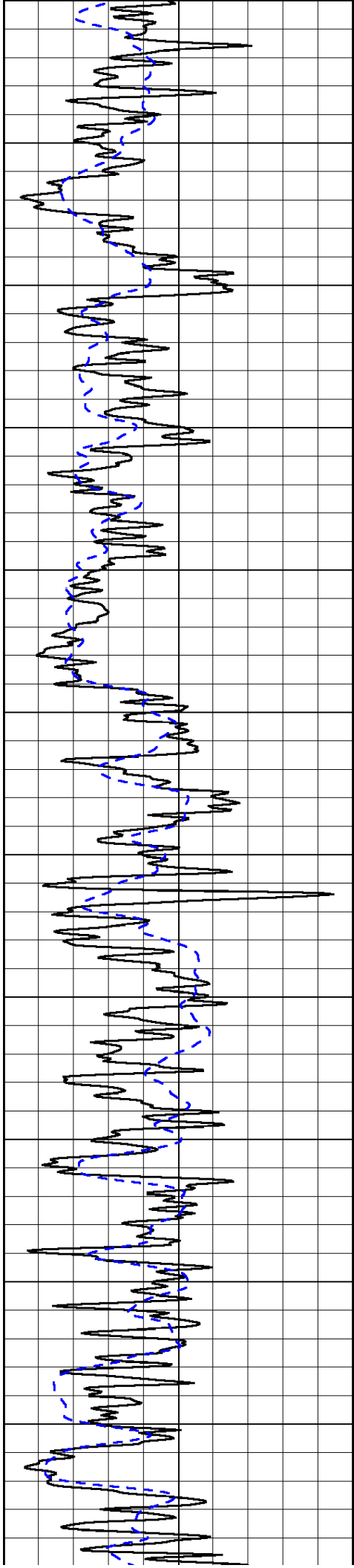
1000	Conductivity (Ohm-m)	0
15000	Line Tension (lb)	0

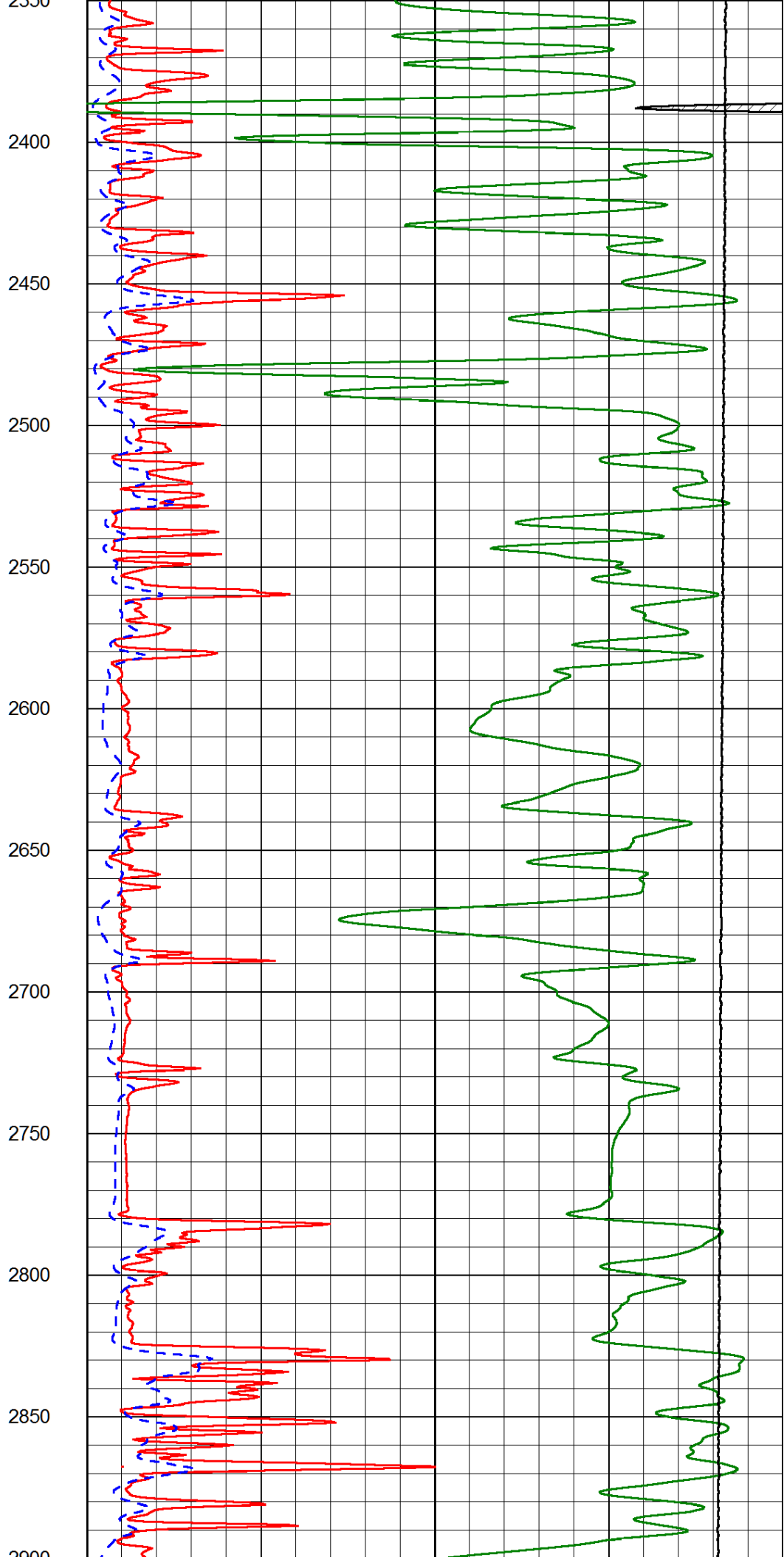
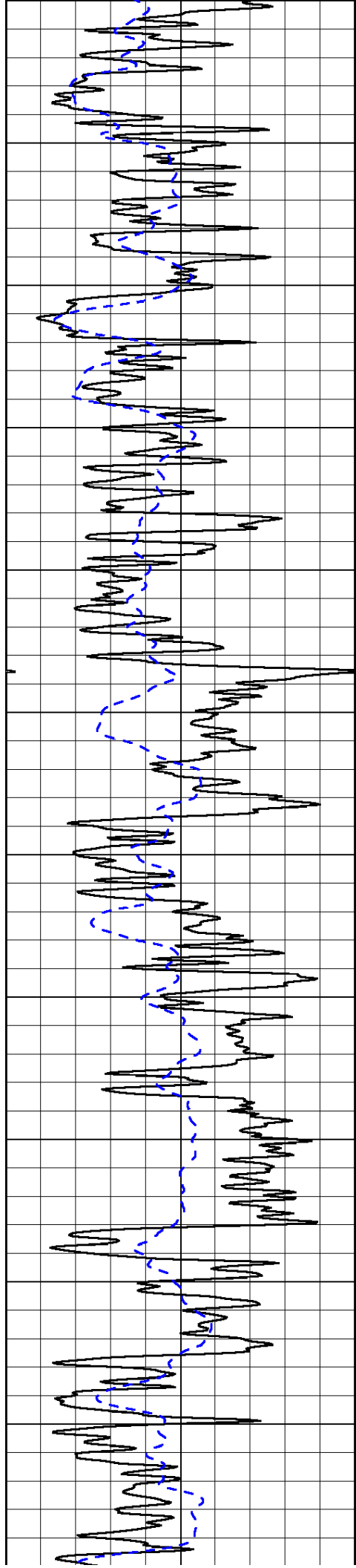
Shallow Resistivity		
50	(Ohm-m)	500
Deep Resistivity (Ohm-m)		
50	Deep Resistivity (Ohm-m)	500

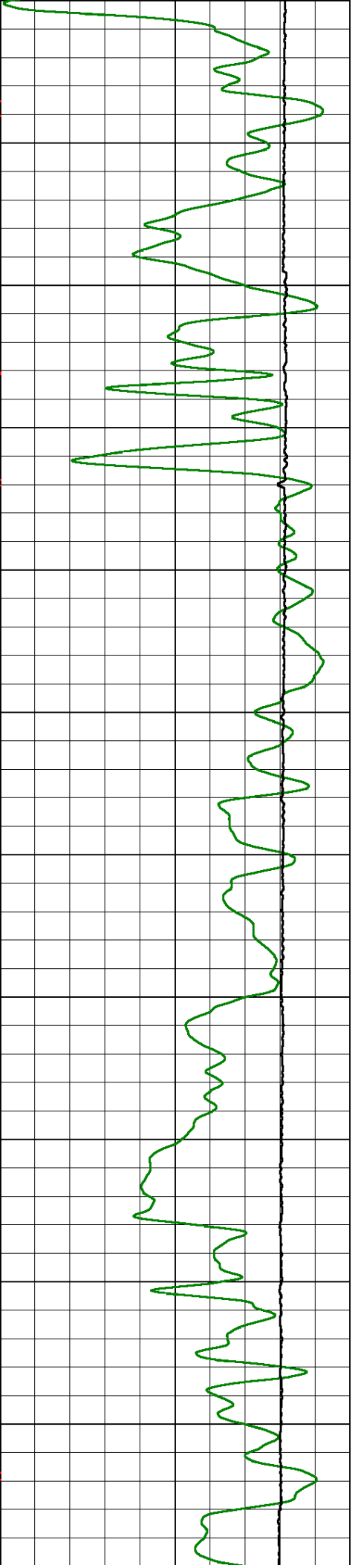
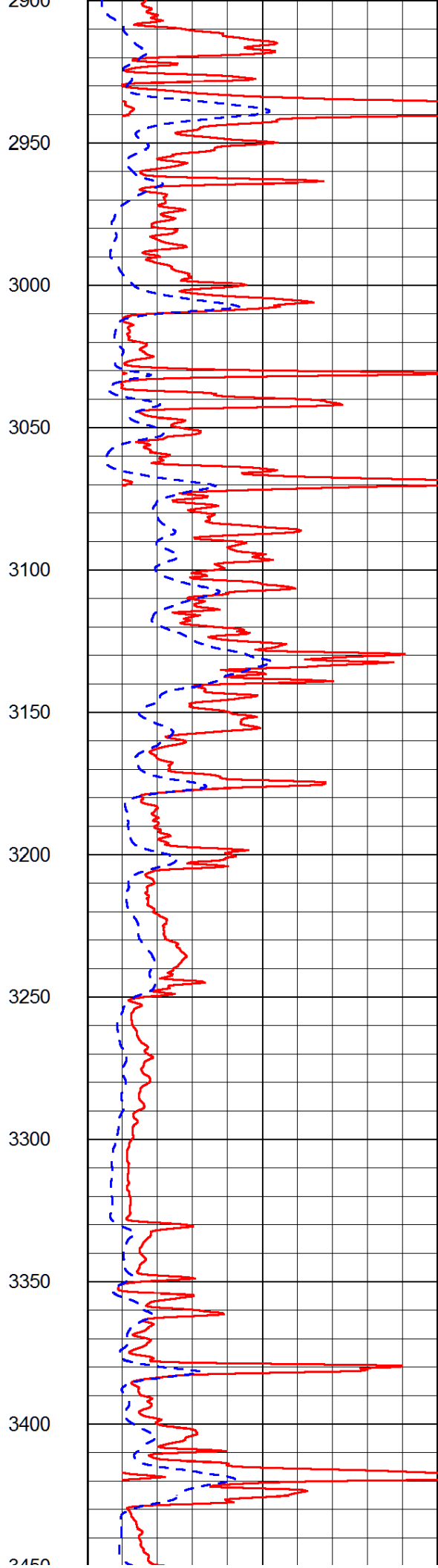
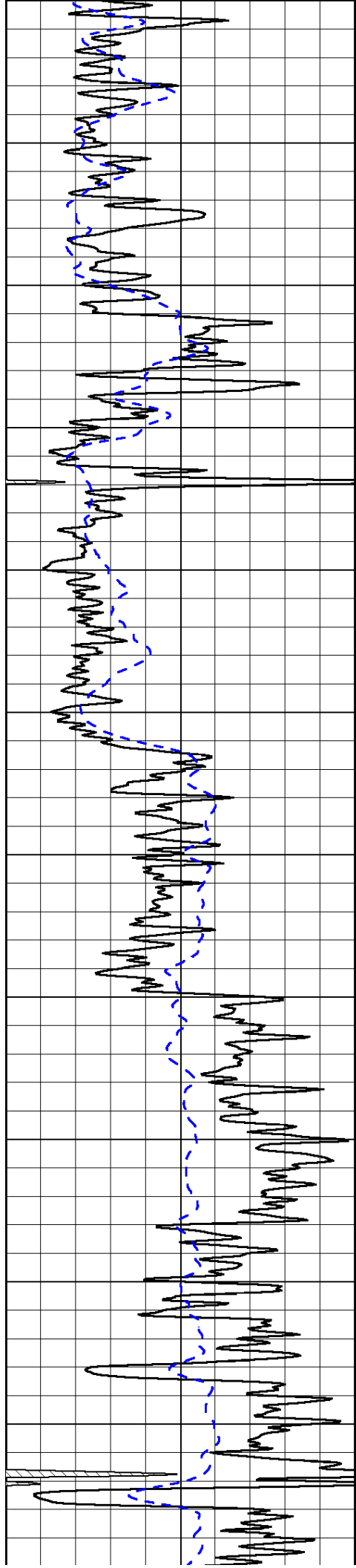


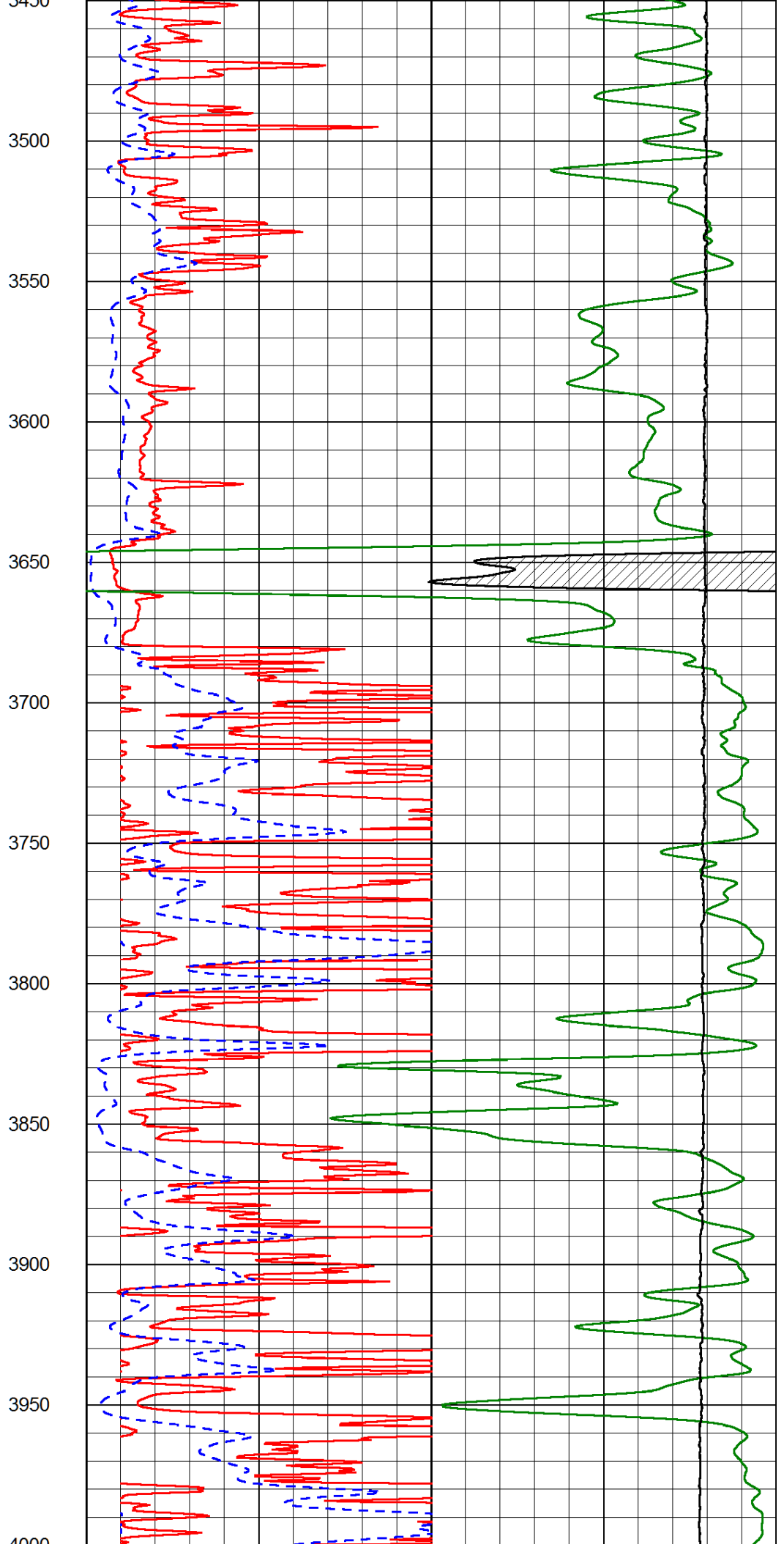
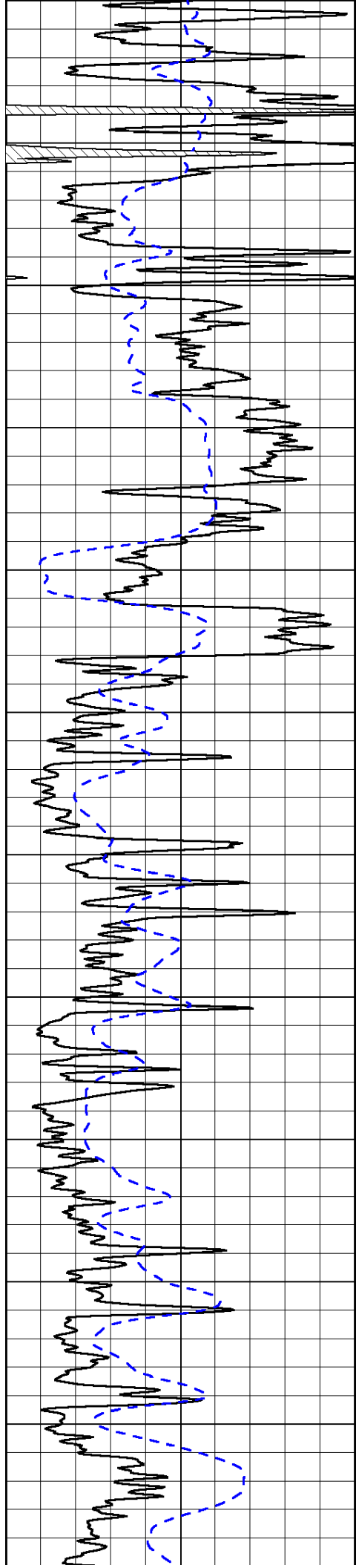


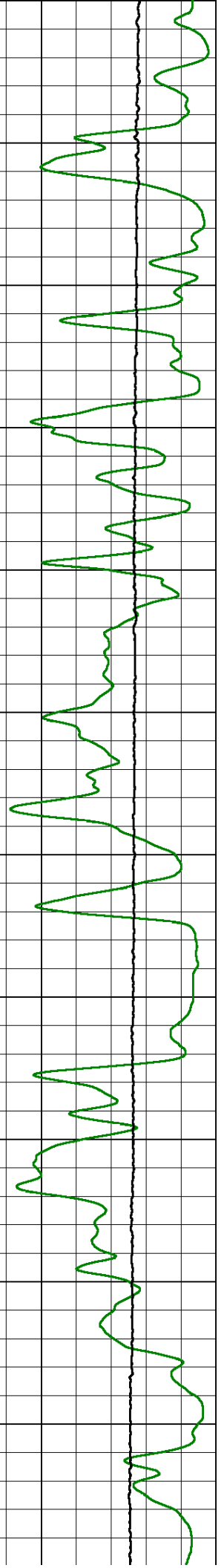
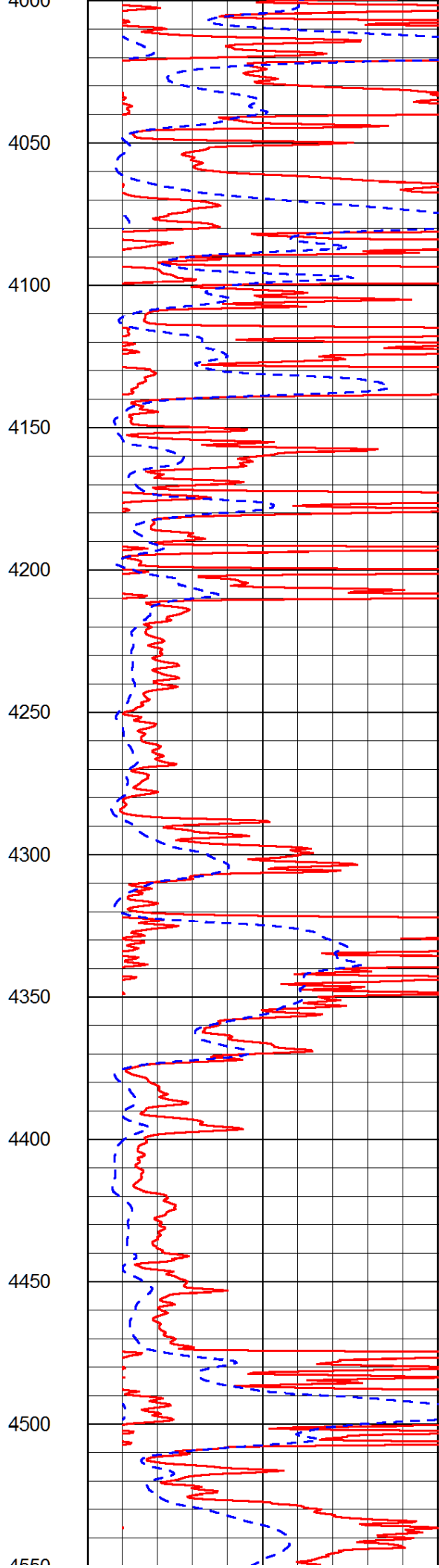
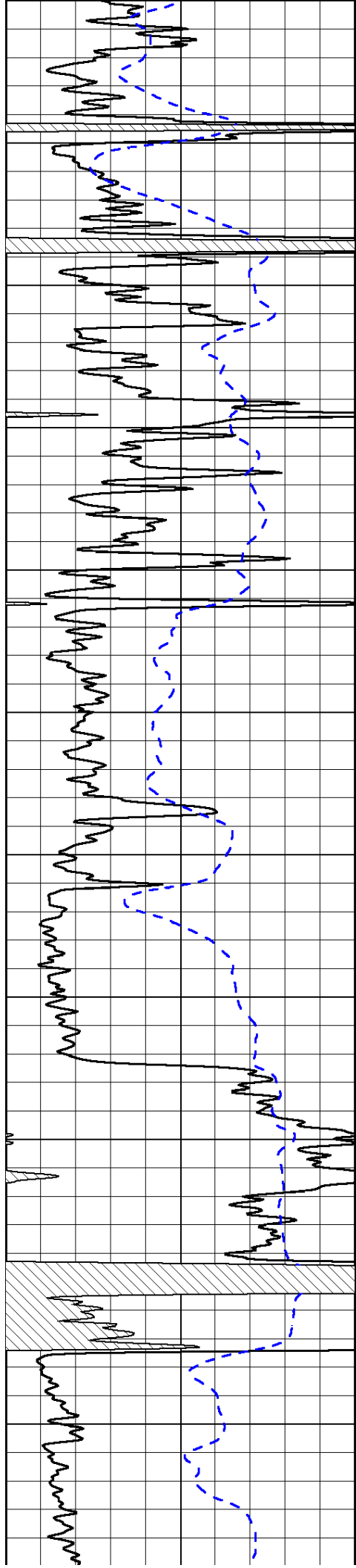


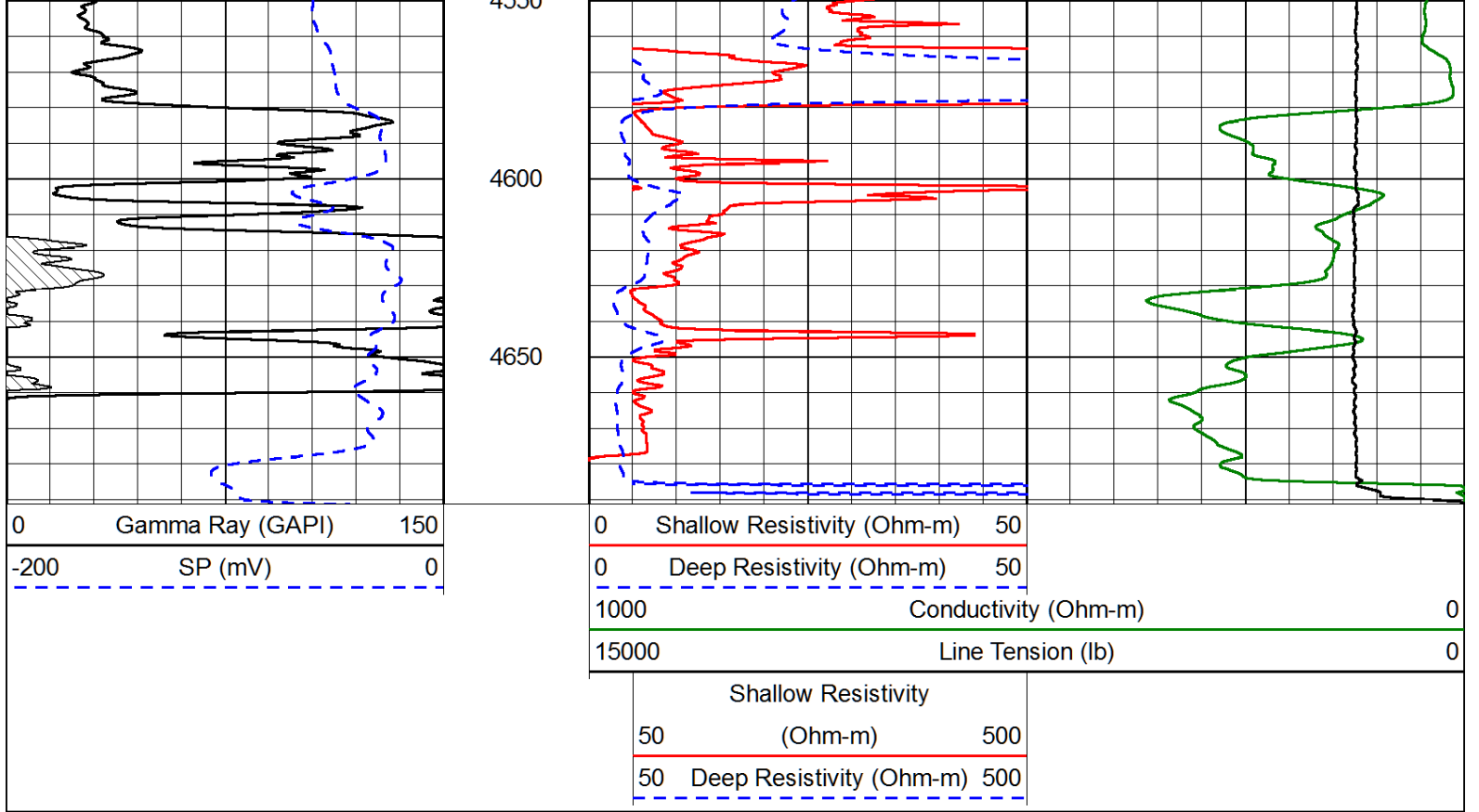




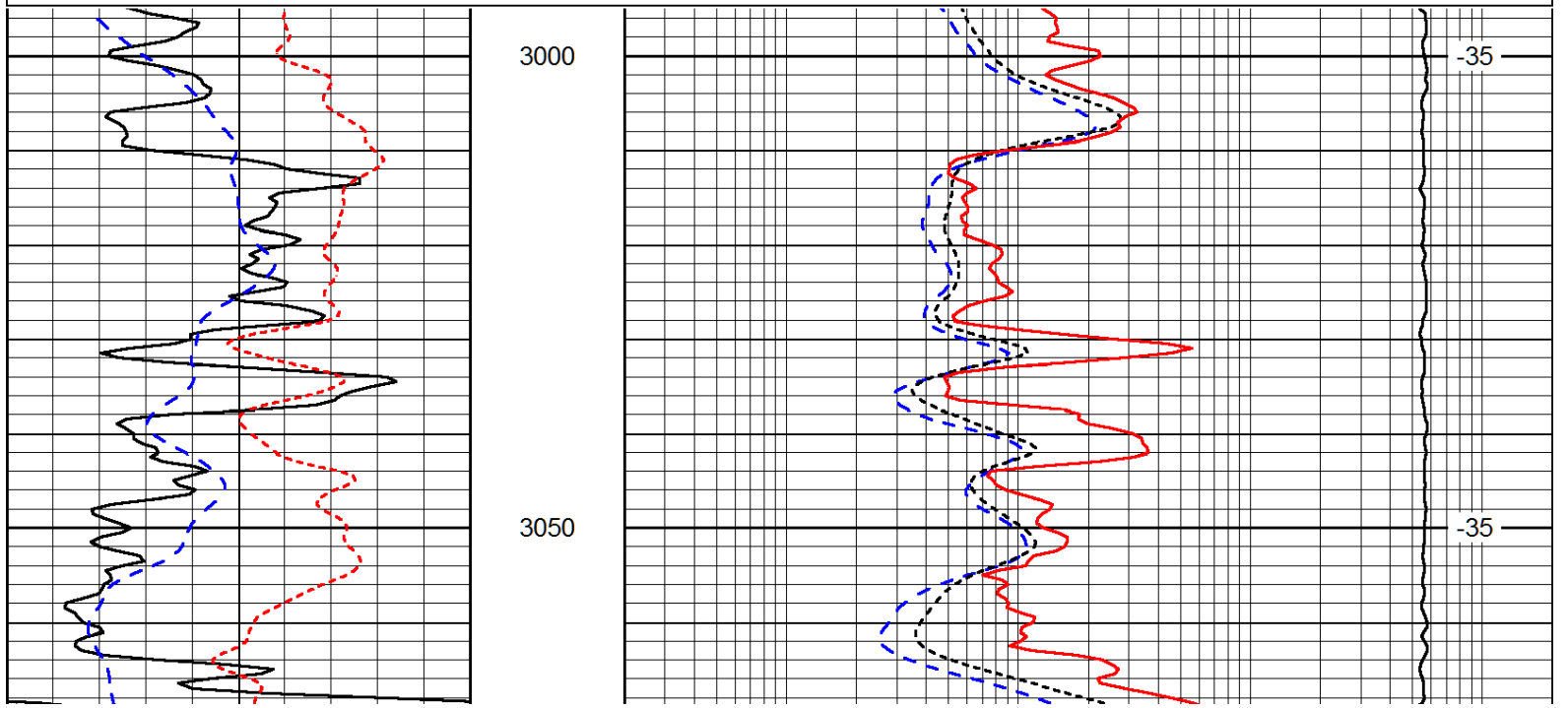
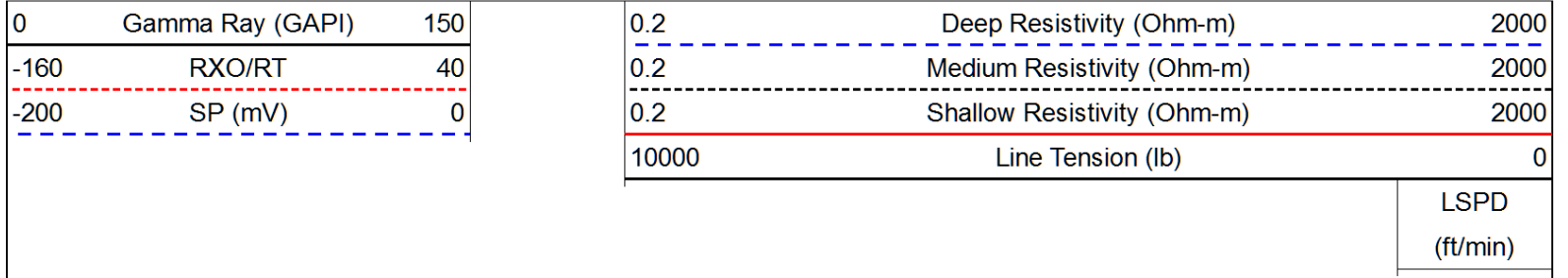


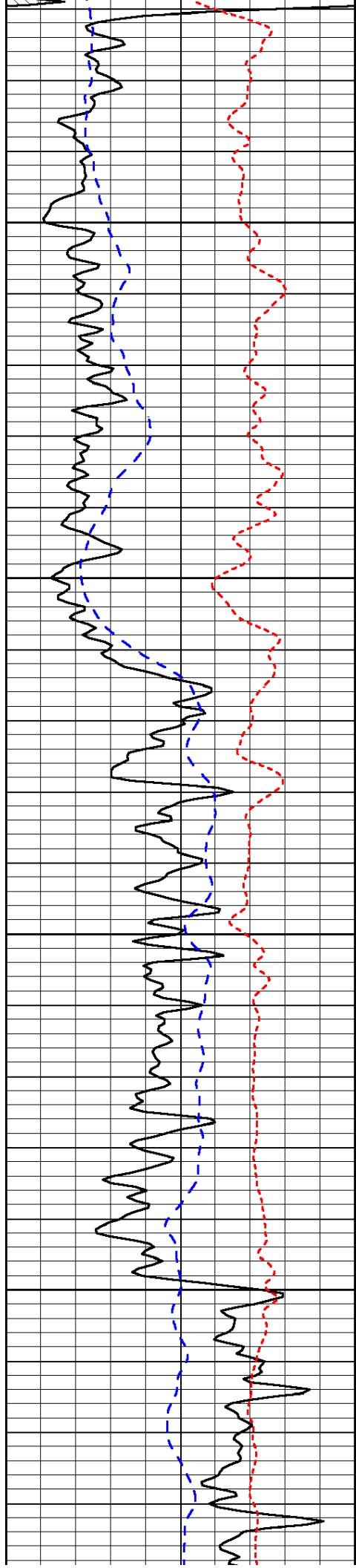






Database File: griffin_122012hd.db
 Dataset Pathname: dil/grfstack
 Presentation Format: dil
 Dataset Creation: Thu Dec 20 06:20:47 2012
 Charted by: Depth in Feet scaled 1:240



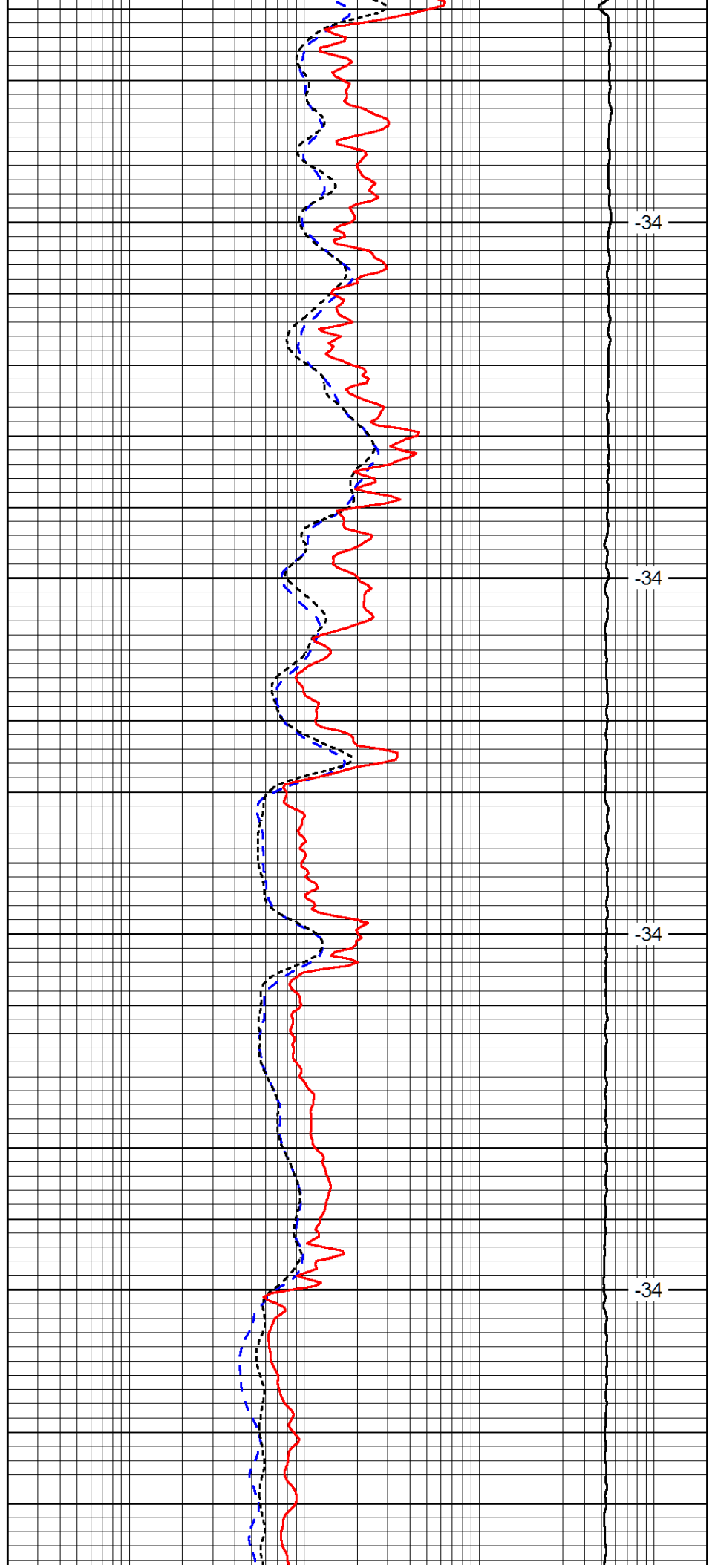


3100

3150

3200

3250

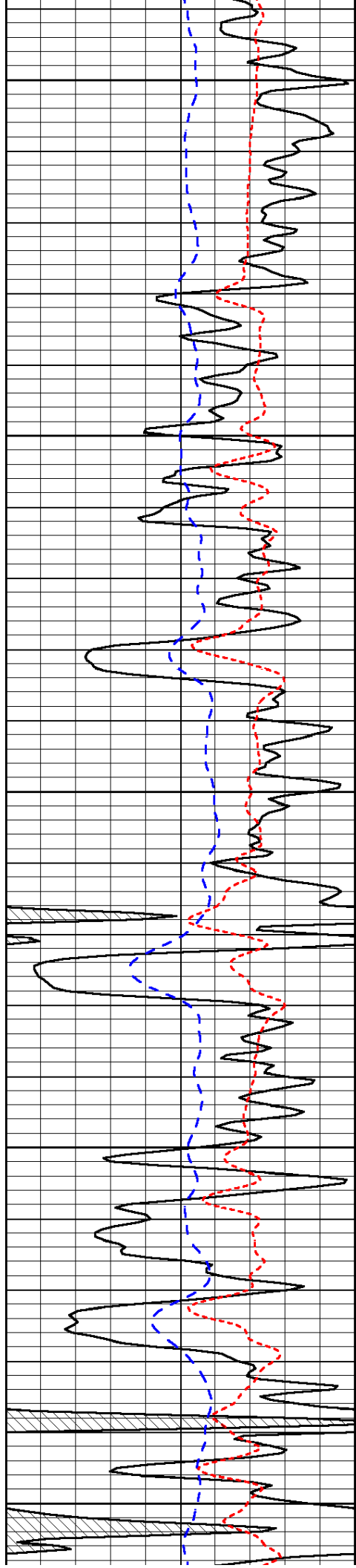


-34

-34

-34

-34



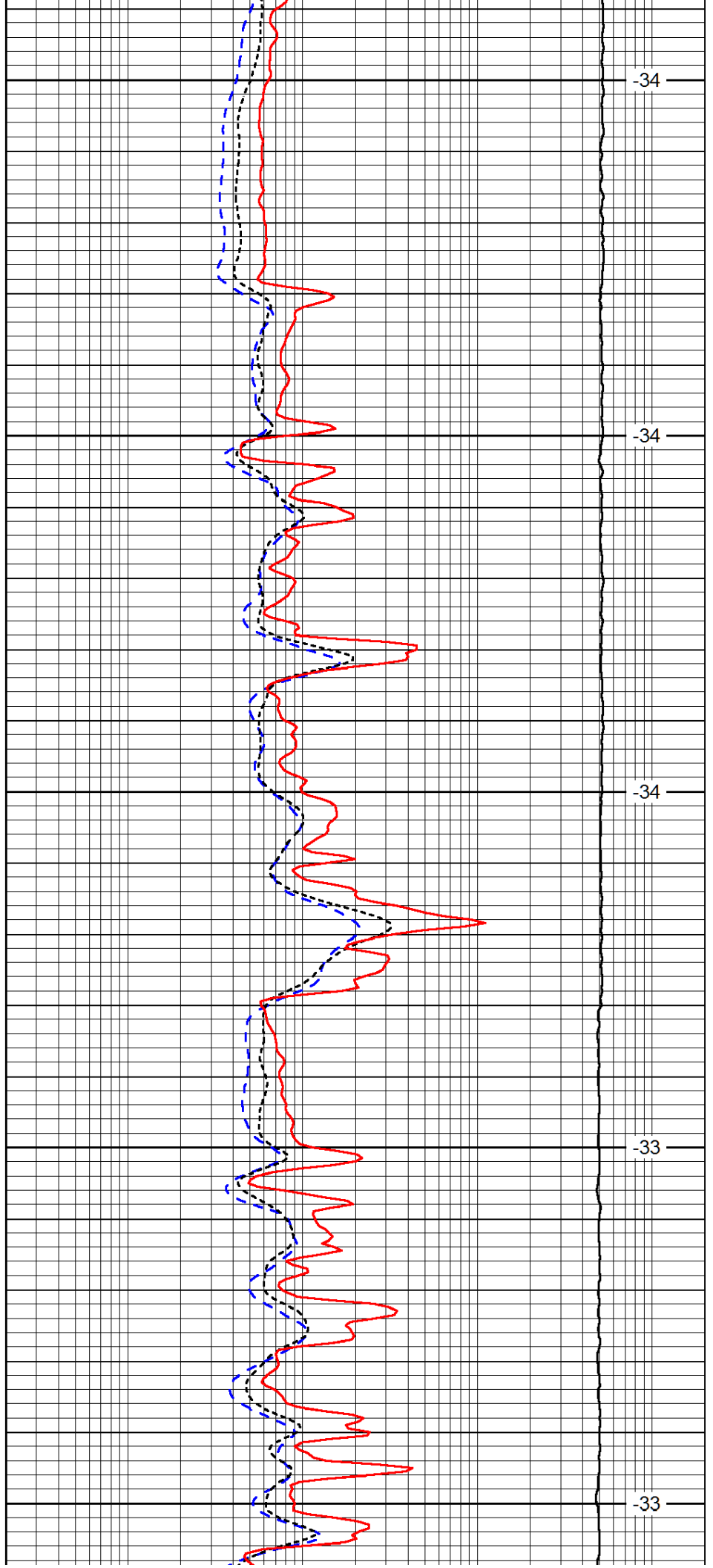
3300

3350

3400

3450

3500



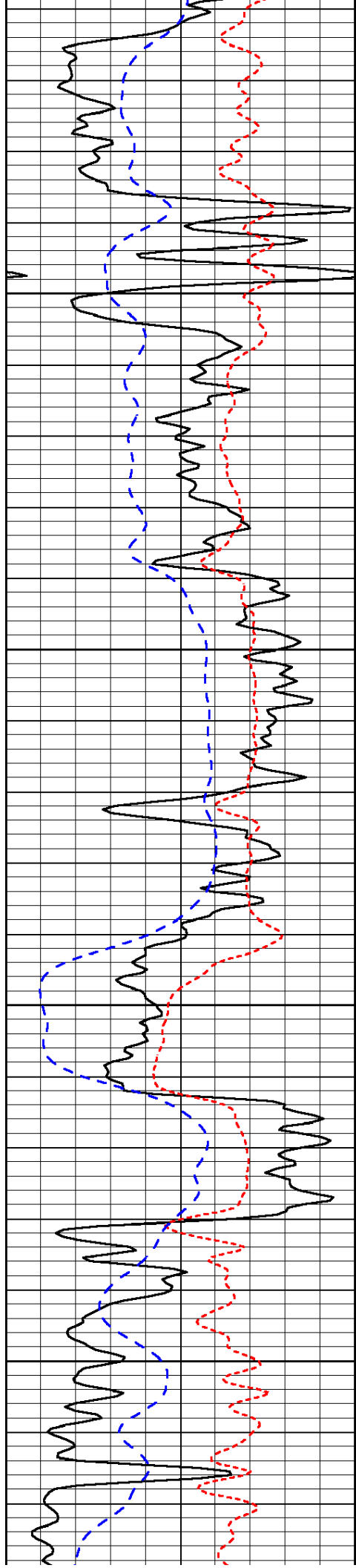
-34

-34

-34

-33

-33

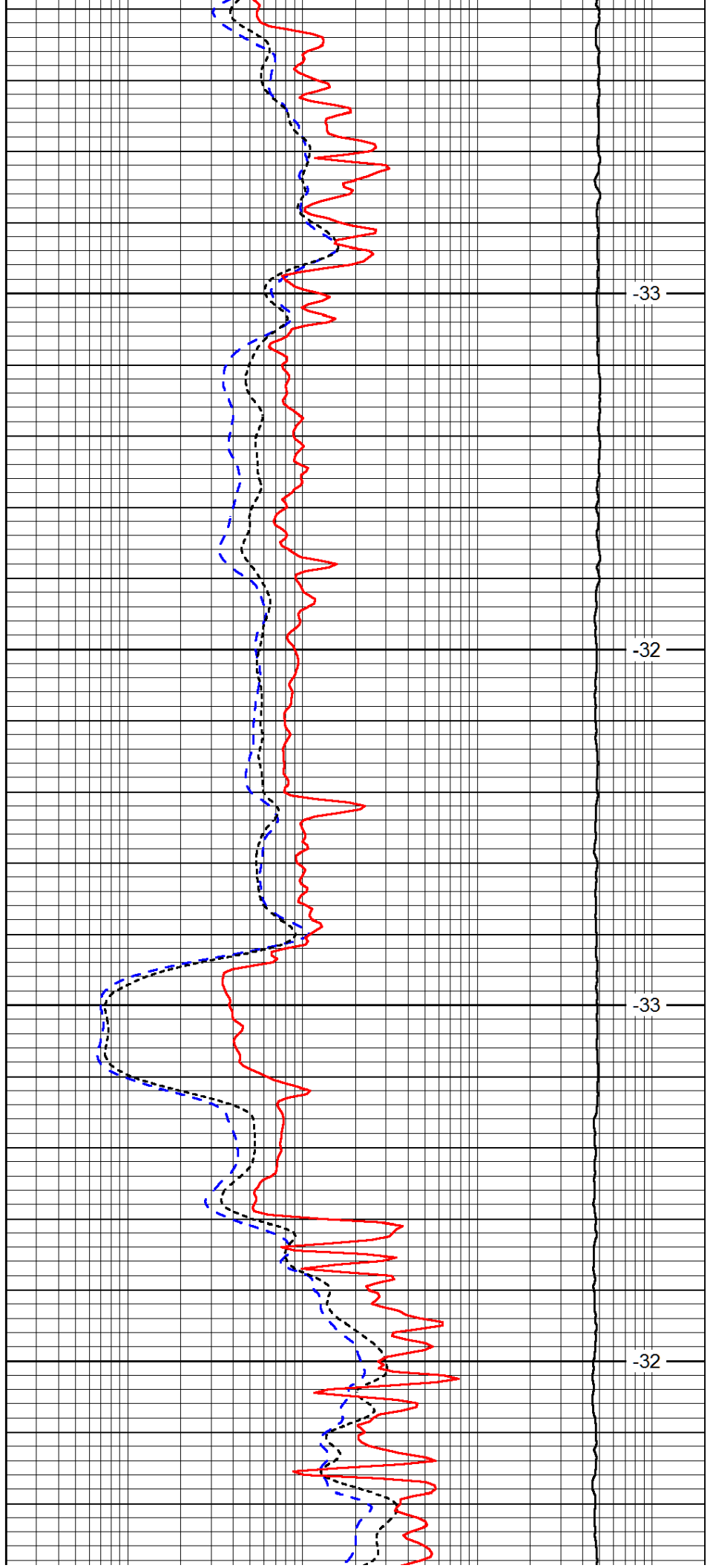


3550

3600

3650

3700

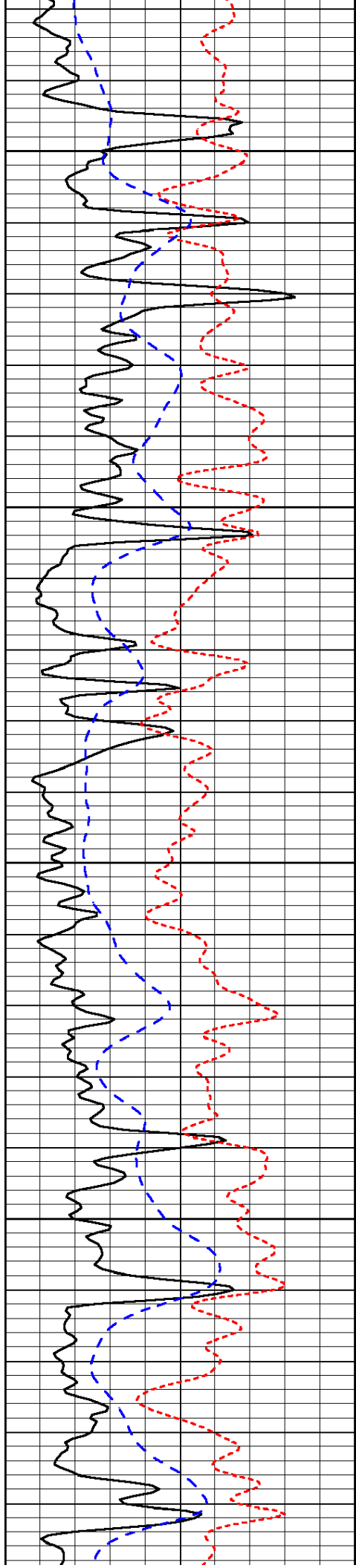


-33

-32

-33

-32

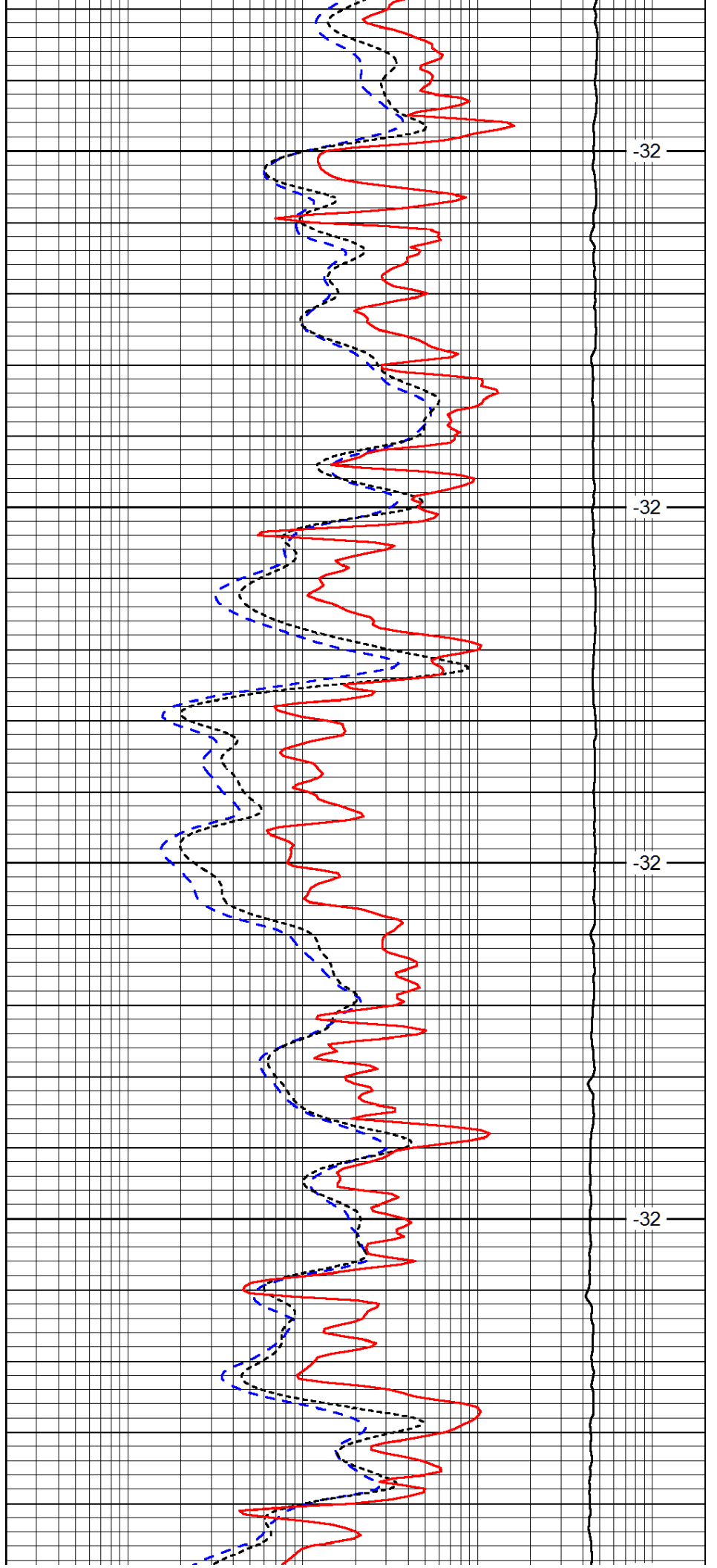


3750

3800

3850

3900

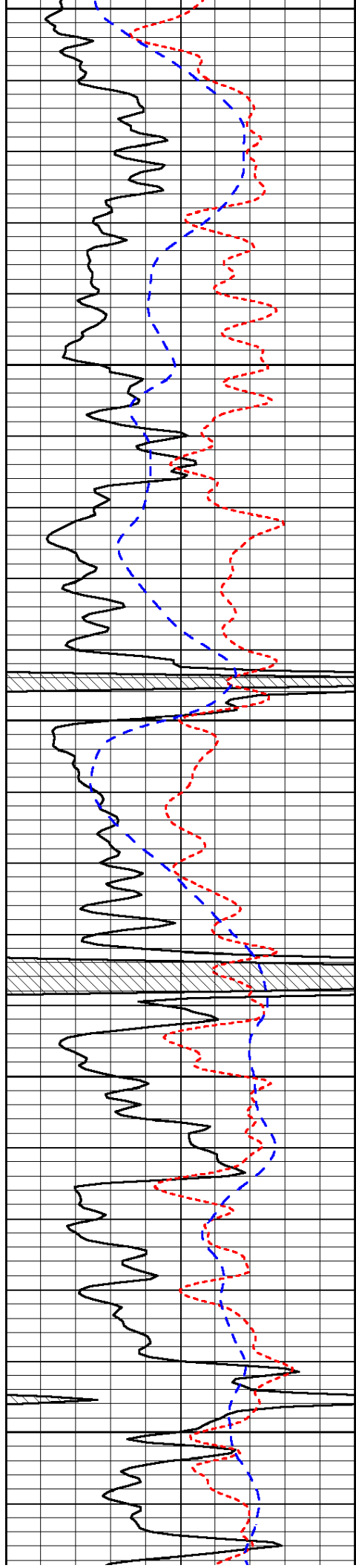


-32

-32

-32

-32



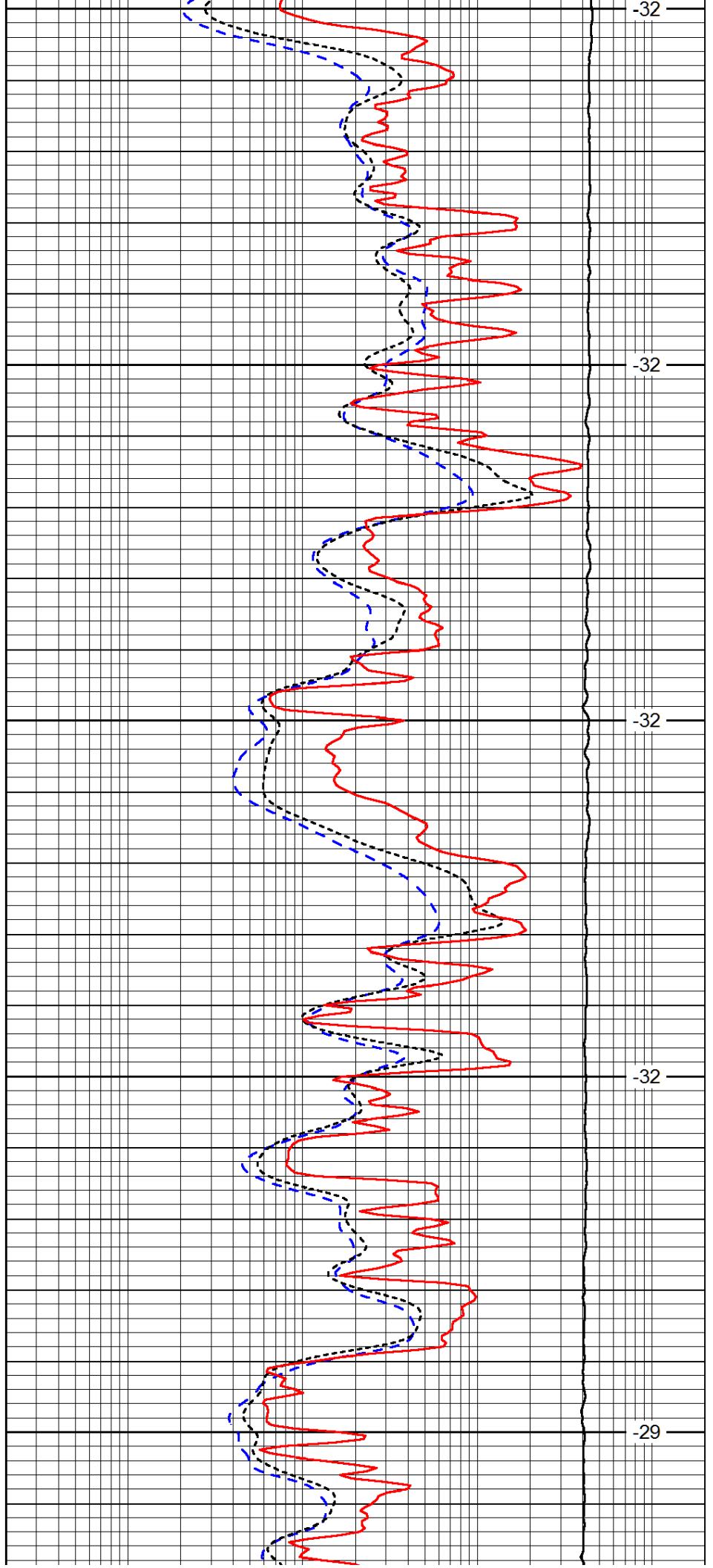
3950

4000

4050

4100

4150



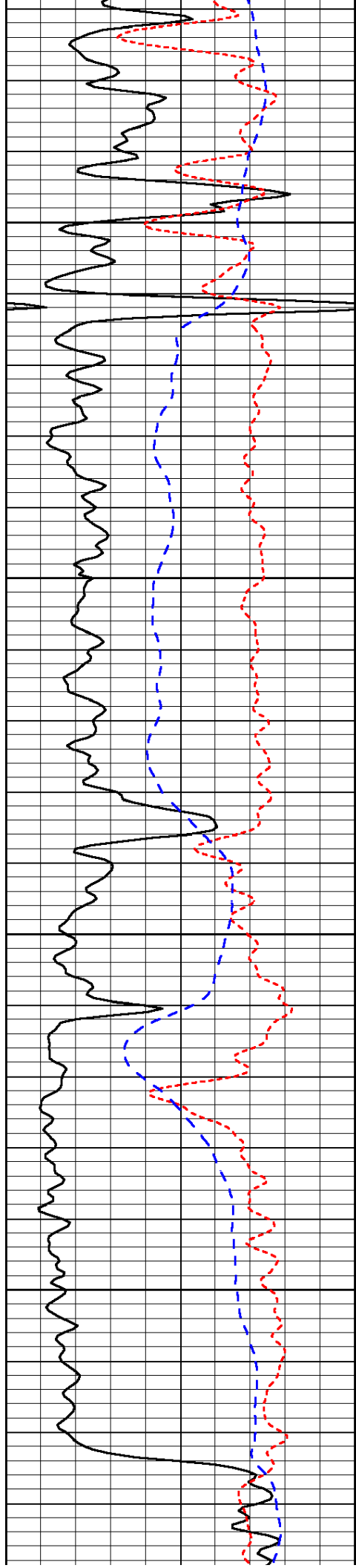
-32

-32

-32

-32

-29

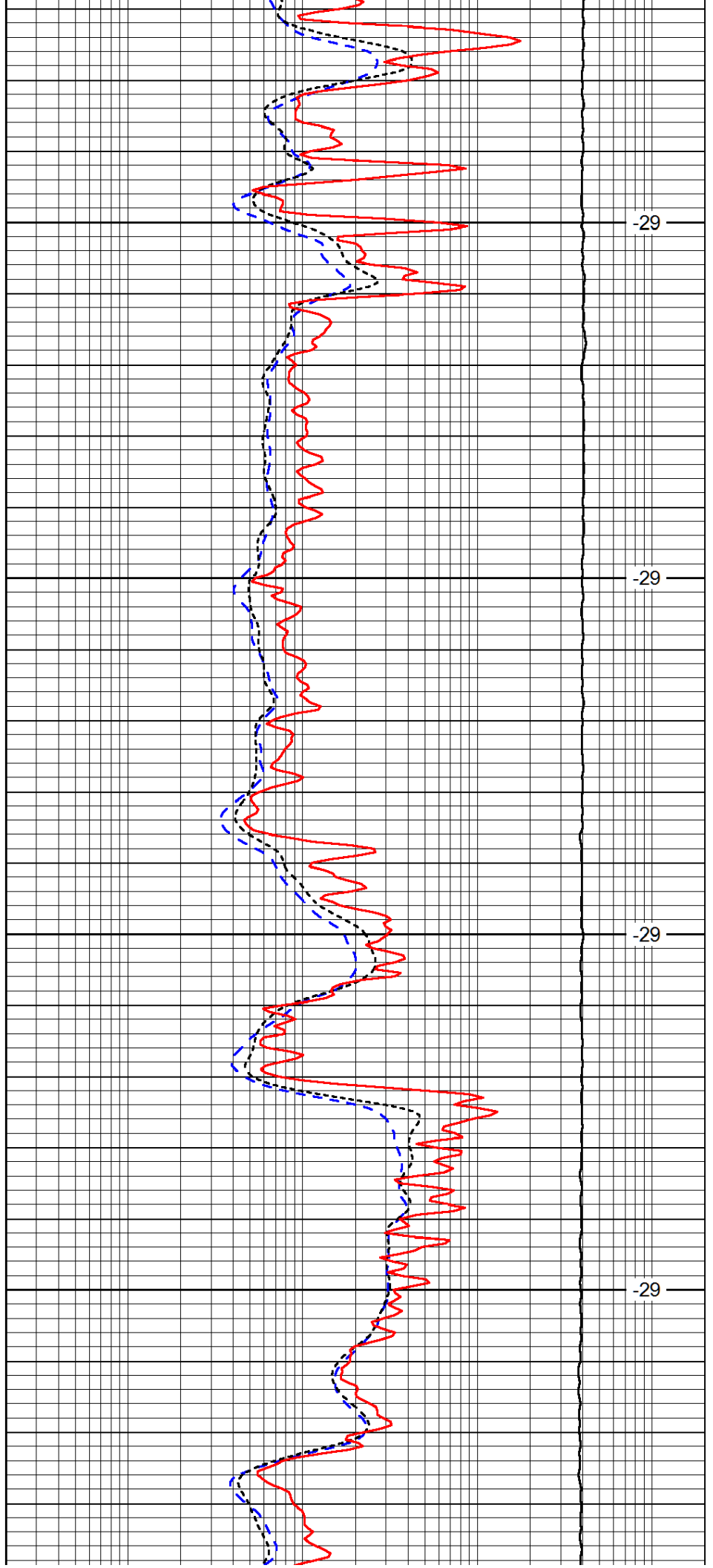


4200

4250

4300

4350

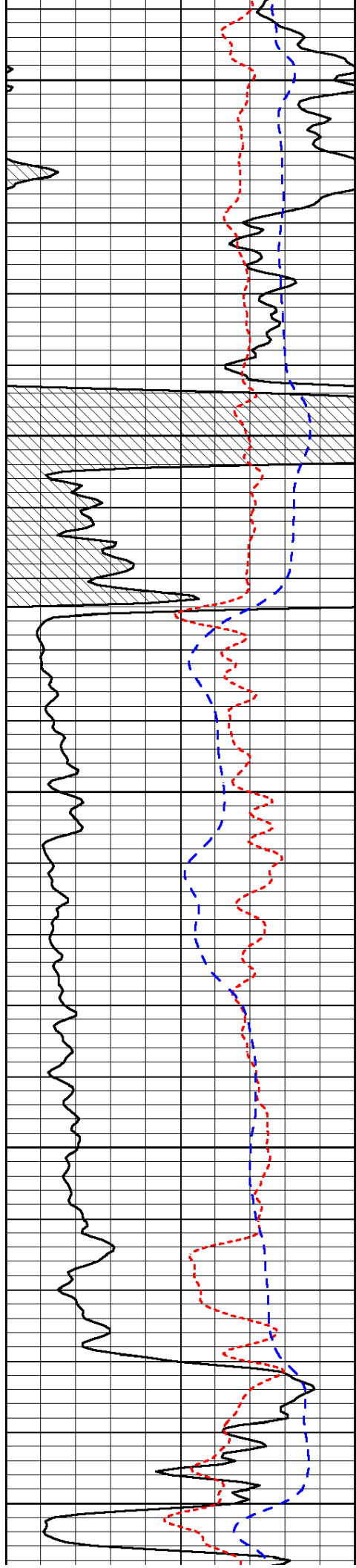


-29

-29

-29

-29



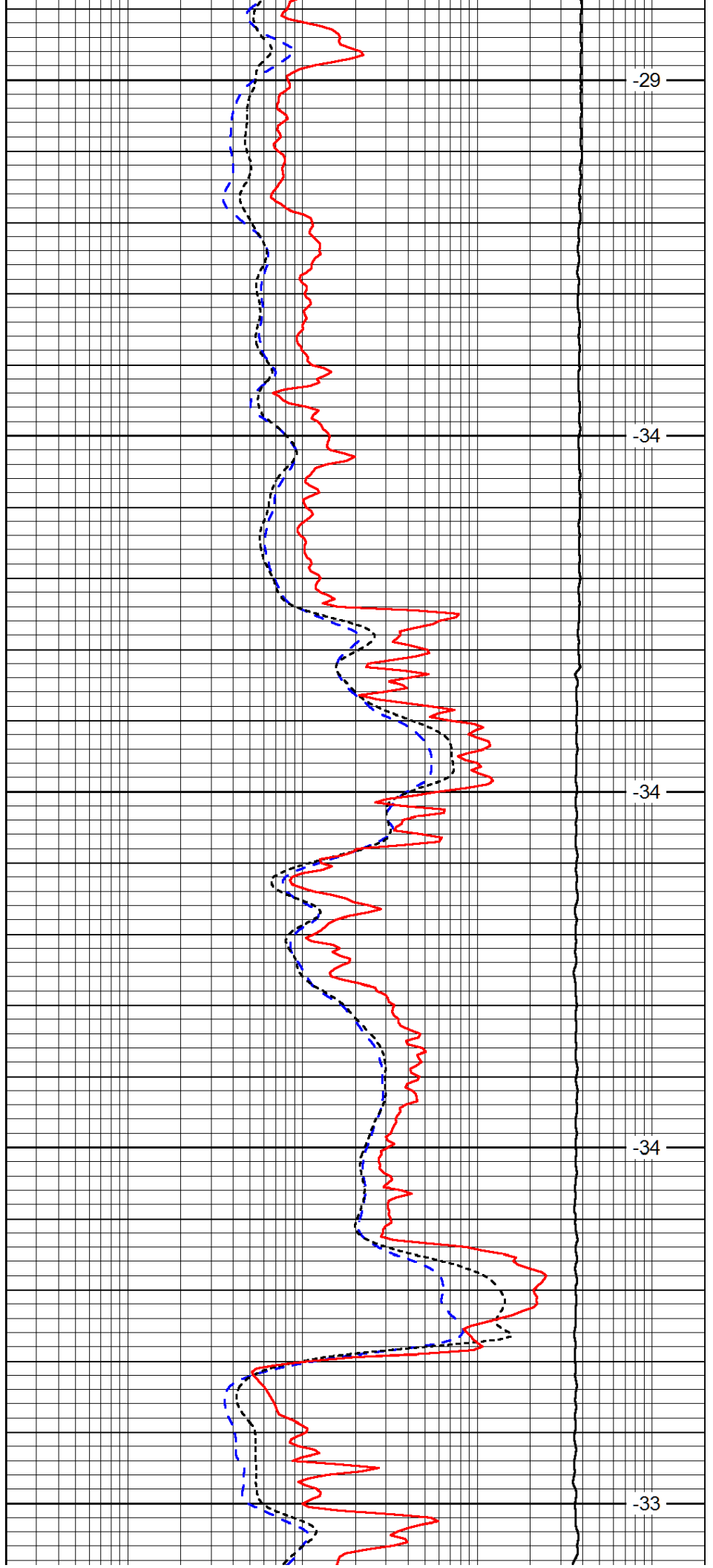
4400

4450

4500

4550

4600



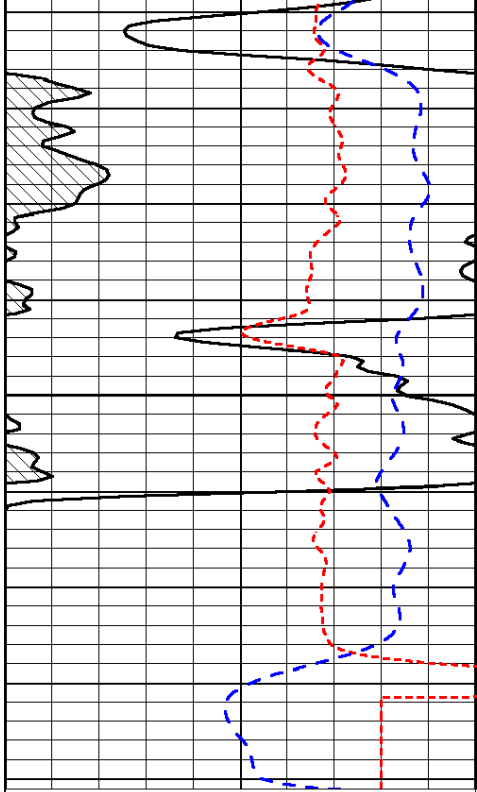
-29

-34

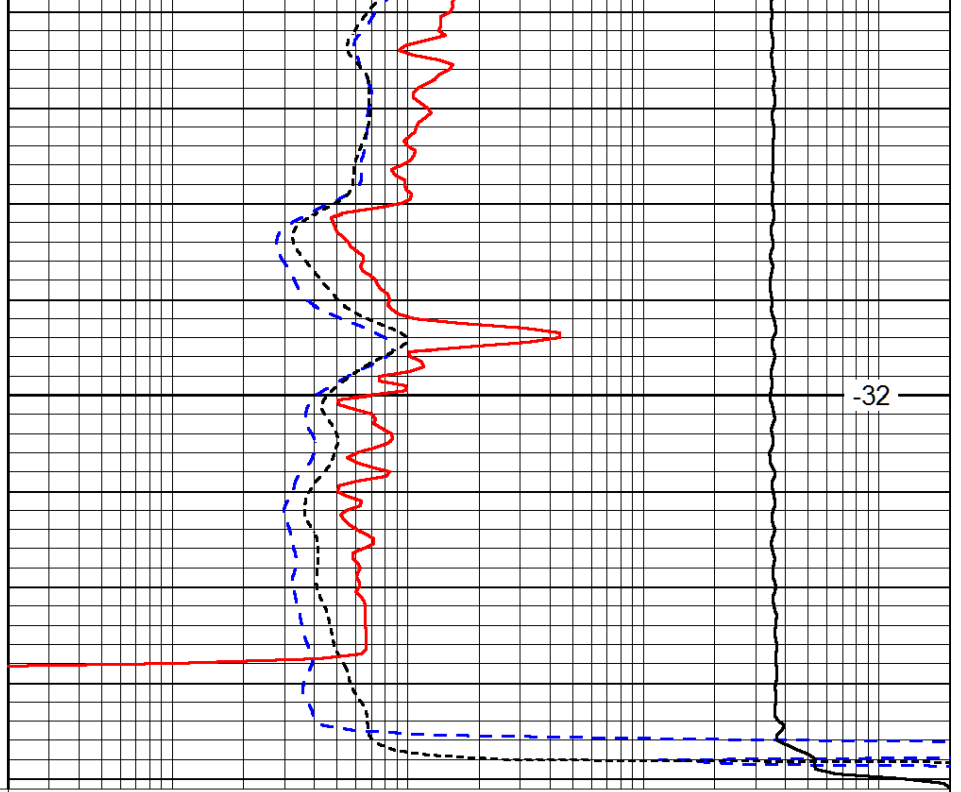
-34

-34

-33



4650



-32

0	Gamma Ray (GAPI)	150
-160	RXO/RT	40
-200	SP (mV)	0

0.2	Deep Resistivity (Ohm-m)	2000
0.2	Medium Resistivity (Ohm-m)	2000
0.2	Shallow Resistivity (Ohm-m)	2000
10000	Line Tension (lb)	0

LSPD
(ft/min)