



Pioneer Energy Services

## Dual Compensated Porosity Log

API No.	15-007-23975-00-00		
Company	Charles N. Griffin		
Well	Janice #1		
Field	Medicine River		
County	Barber		
Location	330' FNL & 4290' FEL		
Other Services	DIL		
Sec:	9	Twp:	32S
		Rge:	12W

Permanent Datum	Ground Level	Elevation	1471
Log Measured From	Kelly Bushing	10 Ft. Above Perm. Datum	
Drilling Measured From	Kelly Bushing		
Date	12/19/2012		

Run Number	One
Type Log	CNL / CDL
Depth Driller	4680
Depth Logger	4686
Bottom Logged Interval	4665
Top Logged Interval	3000
Type Fluid In Hole	Chemical
Salinity, PPM CL	6800
Density	9.3
Level	Full
Max. Rec. Temp. F	125
Operating Rig Time	4 Hours
Equipment -- Location	91 Hays
Recorded By	D. Schmidt
Witnessed By	Bruce A. Reed

Borehole Record				Casing Record			
Run No.	Bit	From	To	Size	Wgt.	From	To
One	12.25	00	262	8.625	23#	00	262
Two	7.875	262	TD				

<<< Fold Here >>>

All interpretations are opinions based on inferences from electrical or other measurements and we cannot and do not guarantee the accuracy or correctness of any interpretation, and we shall not, except in the case of gross or willful negligence on our part, be liable or responsible for any loss, costs, damages, or expenses incurred or sustained by anyone resulting from any interpretation made by any of our officers, agents or employees. These interpretations are also subject to our general terms and conditions set out in our current Price Schedule.

### Comments

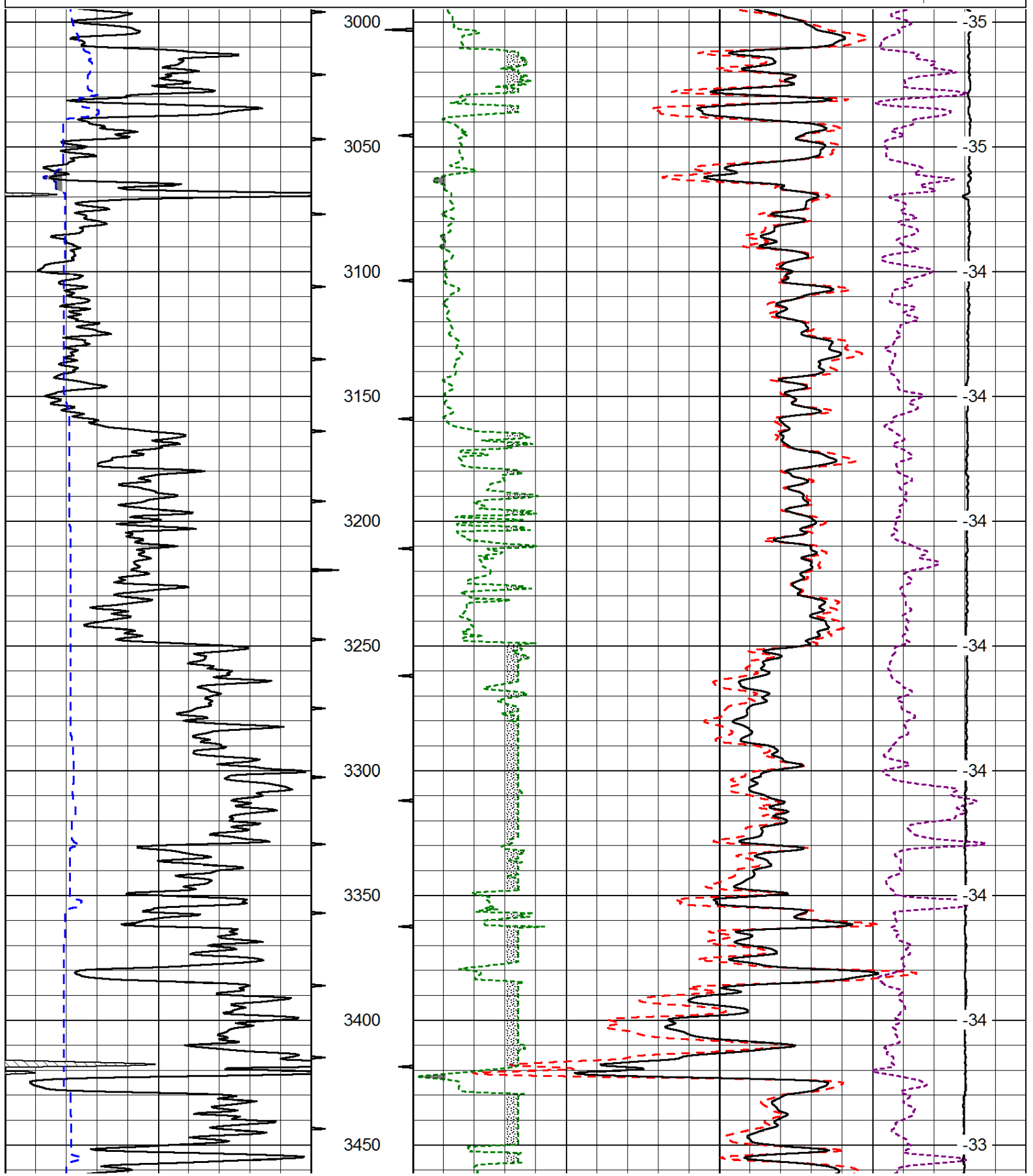
Thank you for using Log-Tech, Inc.  
(785) 625-3858  
  
Medicine Lodge,  
3 West to Willow Rd, 3/8 North,  
East into

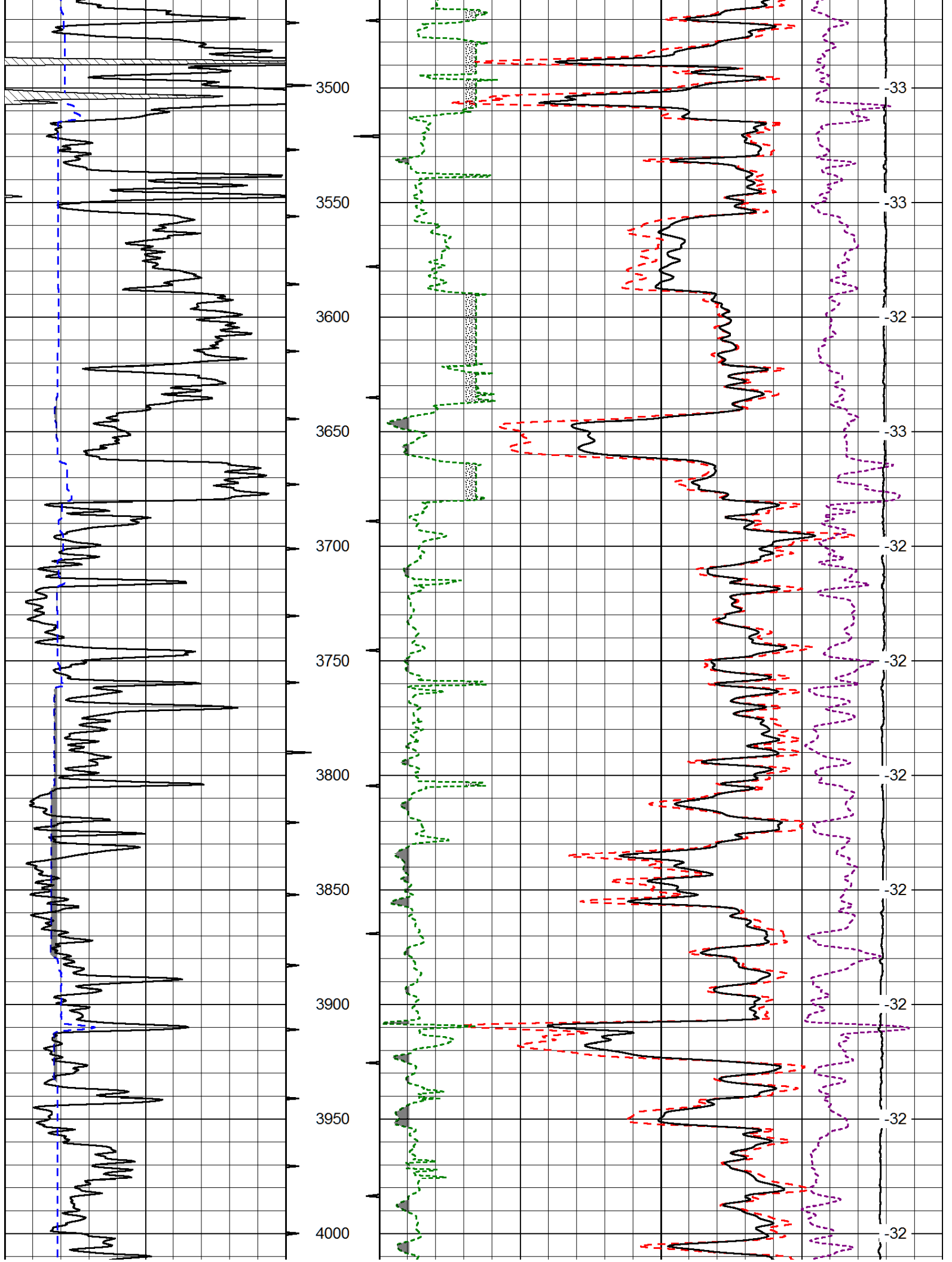
Database File: griffin\_122012hd.db  
 Dataset Pathname: dil/grfstack  
 Presentation Format: cdl  
 Dataset Creation: Thu Dec 20 06:20:47 2012  
 Charted by: Depth in Feet scaled 1:600

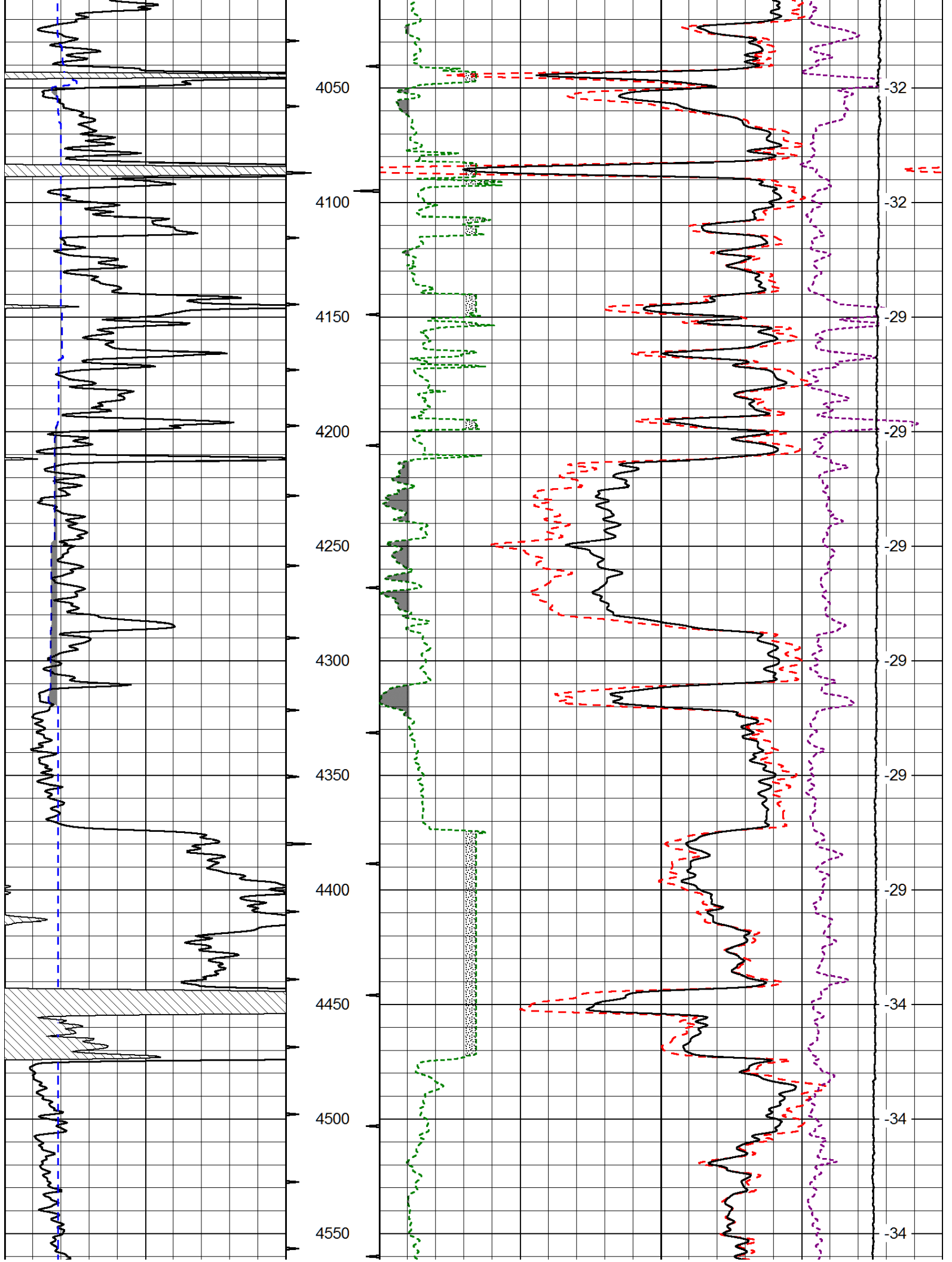
0	Gamma Ray (GAPI)	150
6	Caliper (in)	16

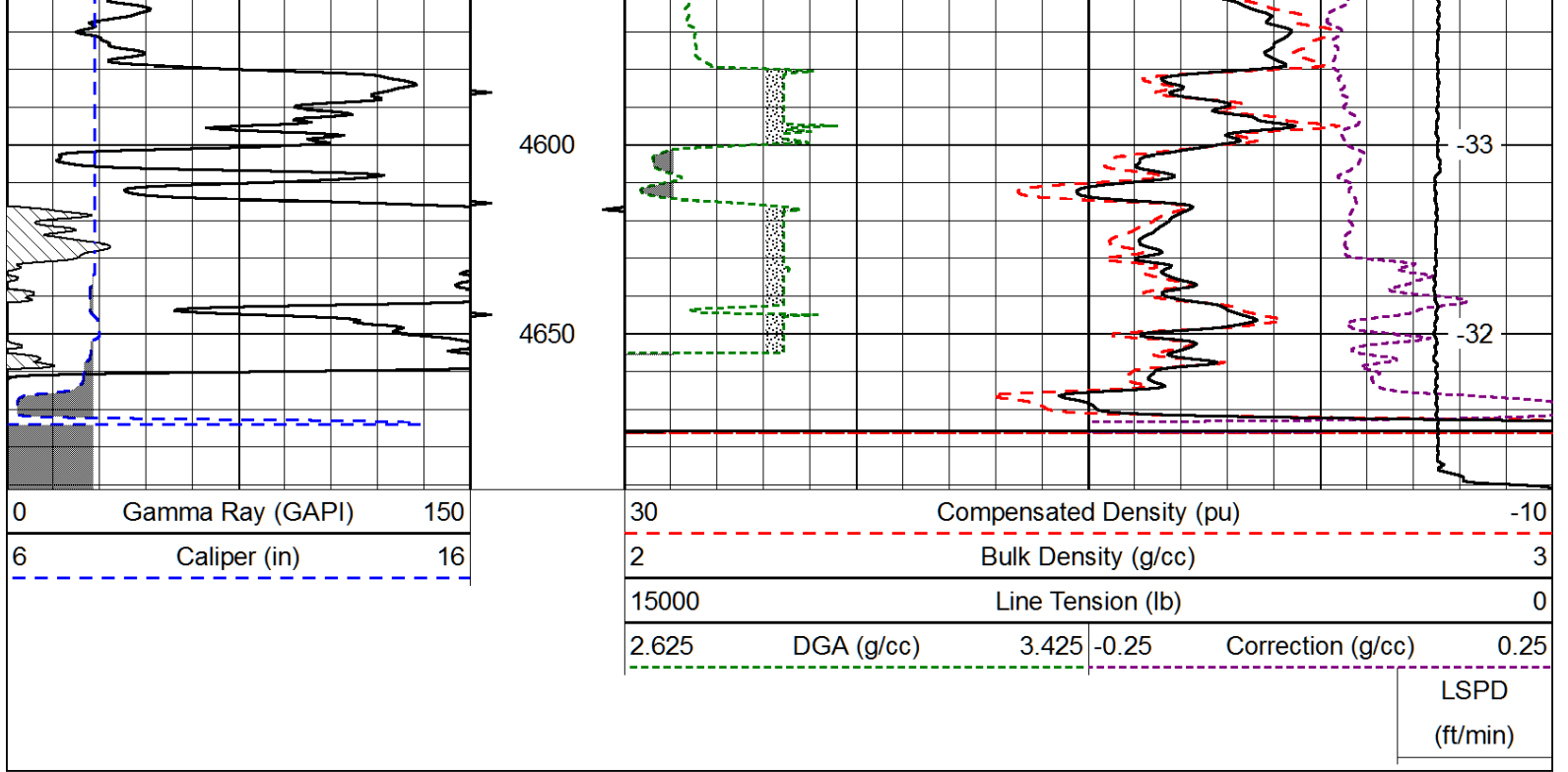
30	Compensated Density (pu)		-10
2	Bulk Density (g/cc)		3
15000	Line Tension (lb)		0
2.625	DGA (g/cc)	3.425	-0.25
			Correction (g/cc)
			0.25

LSPD  
(ft/min)

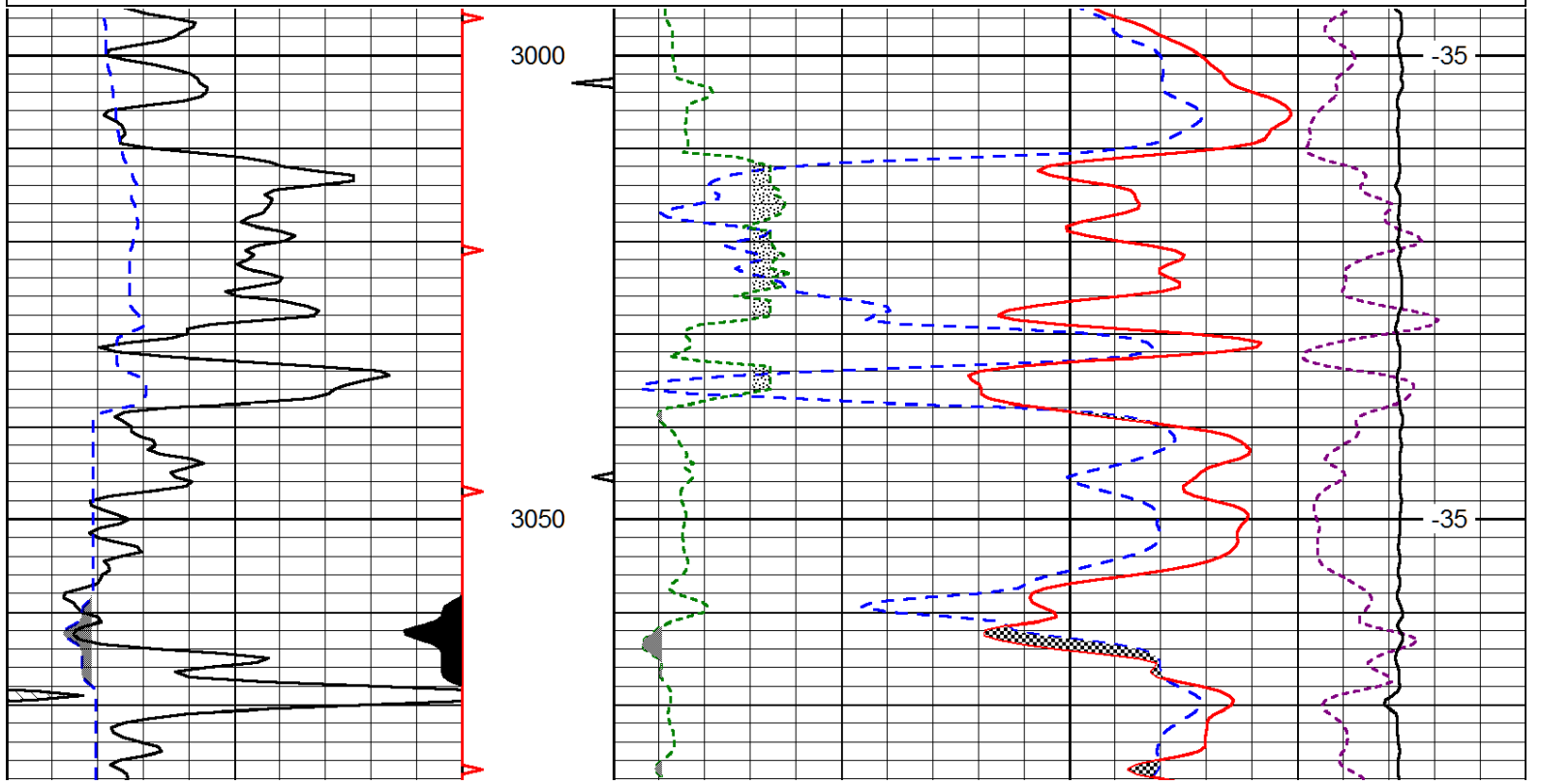
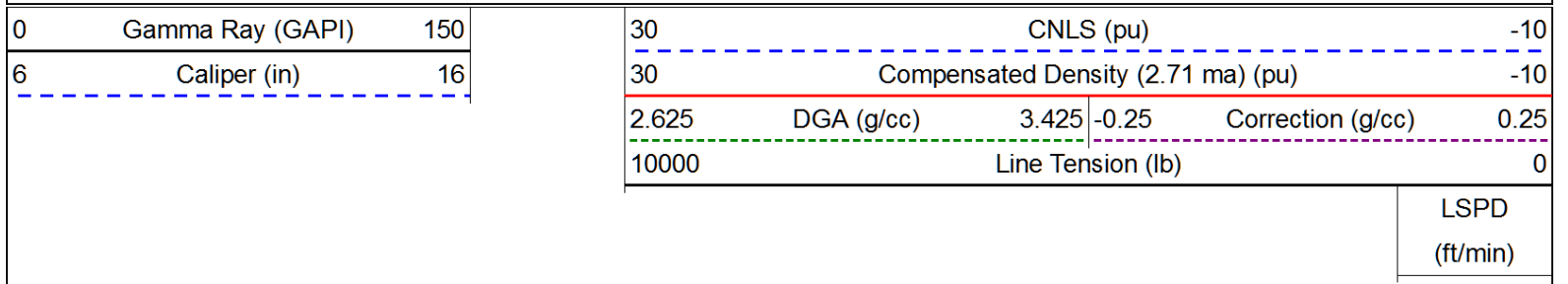


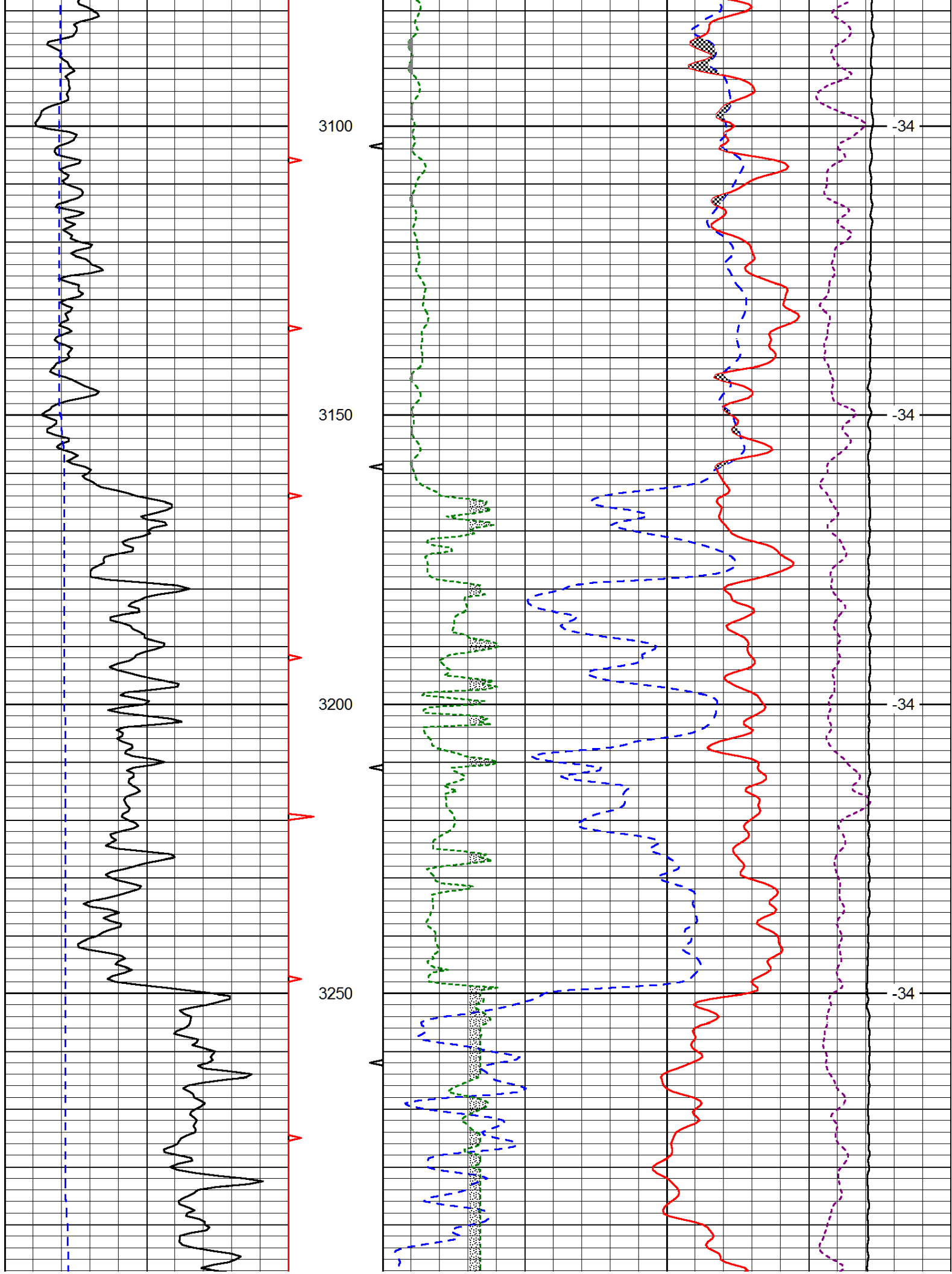


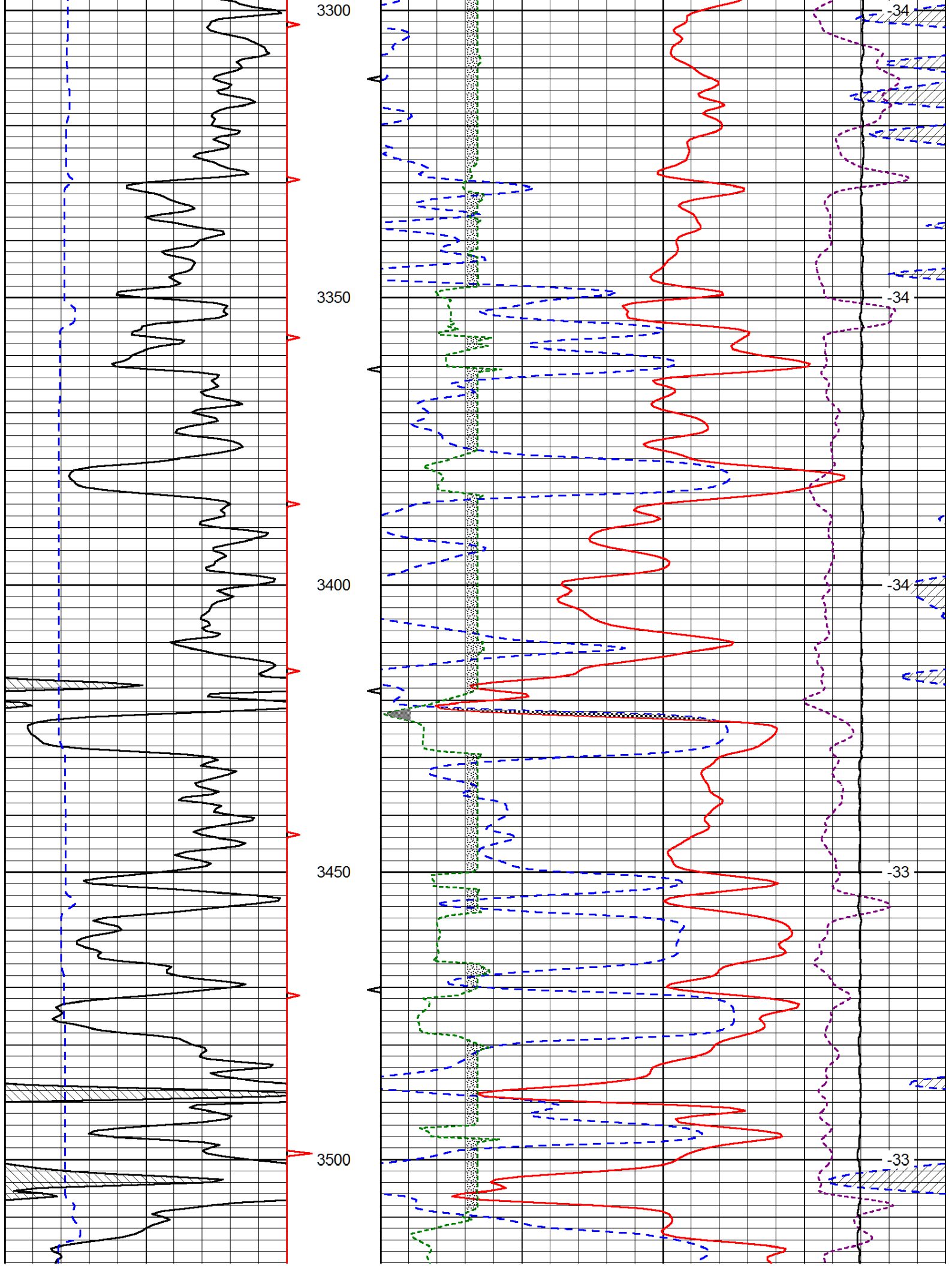


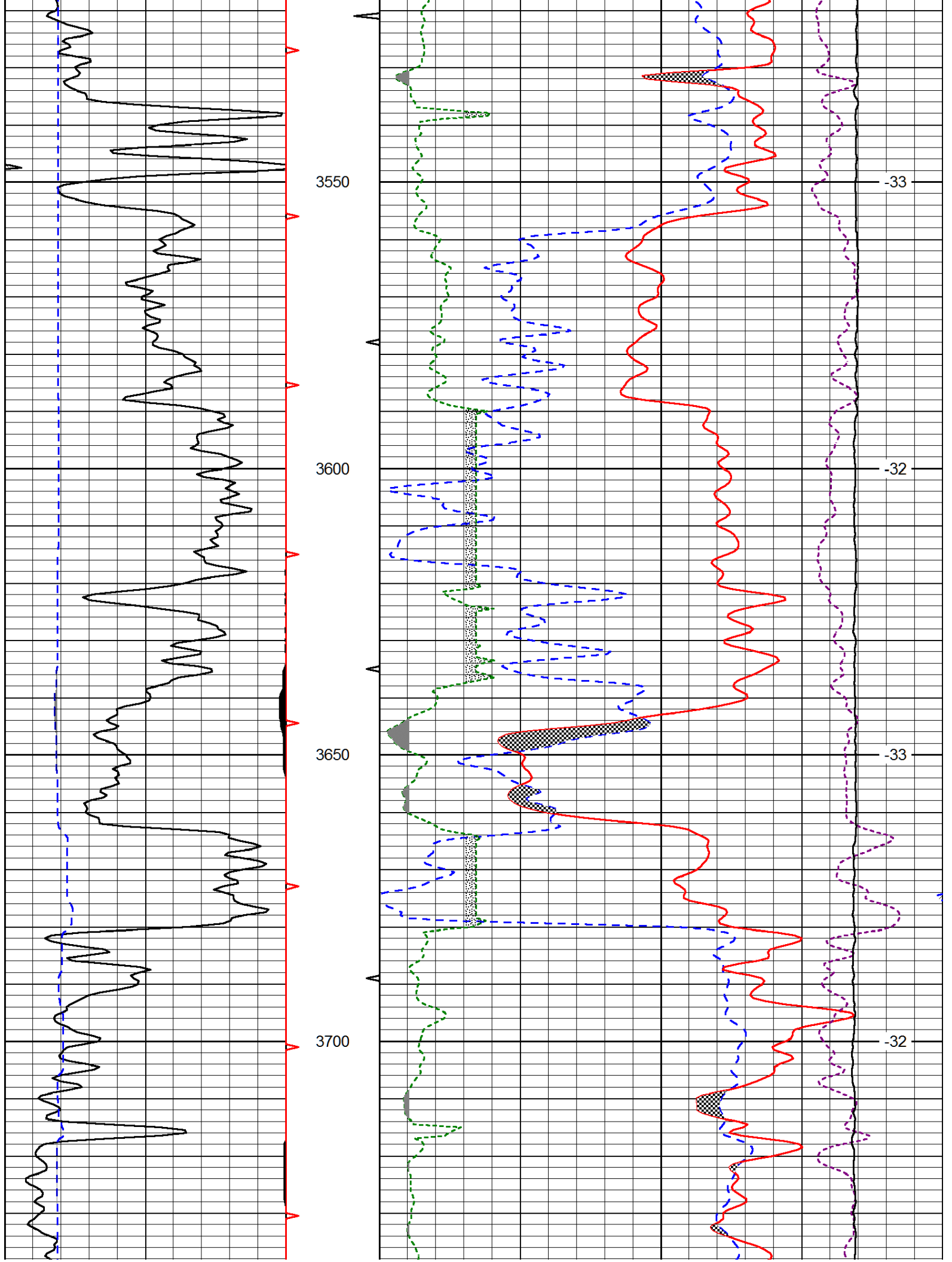


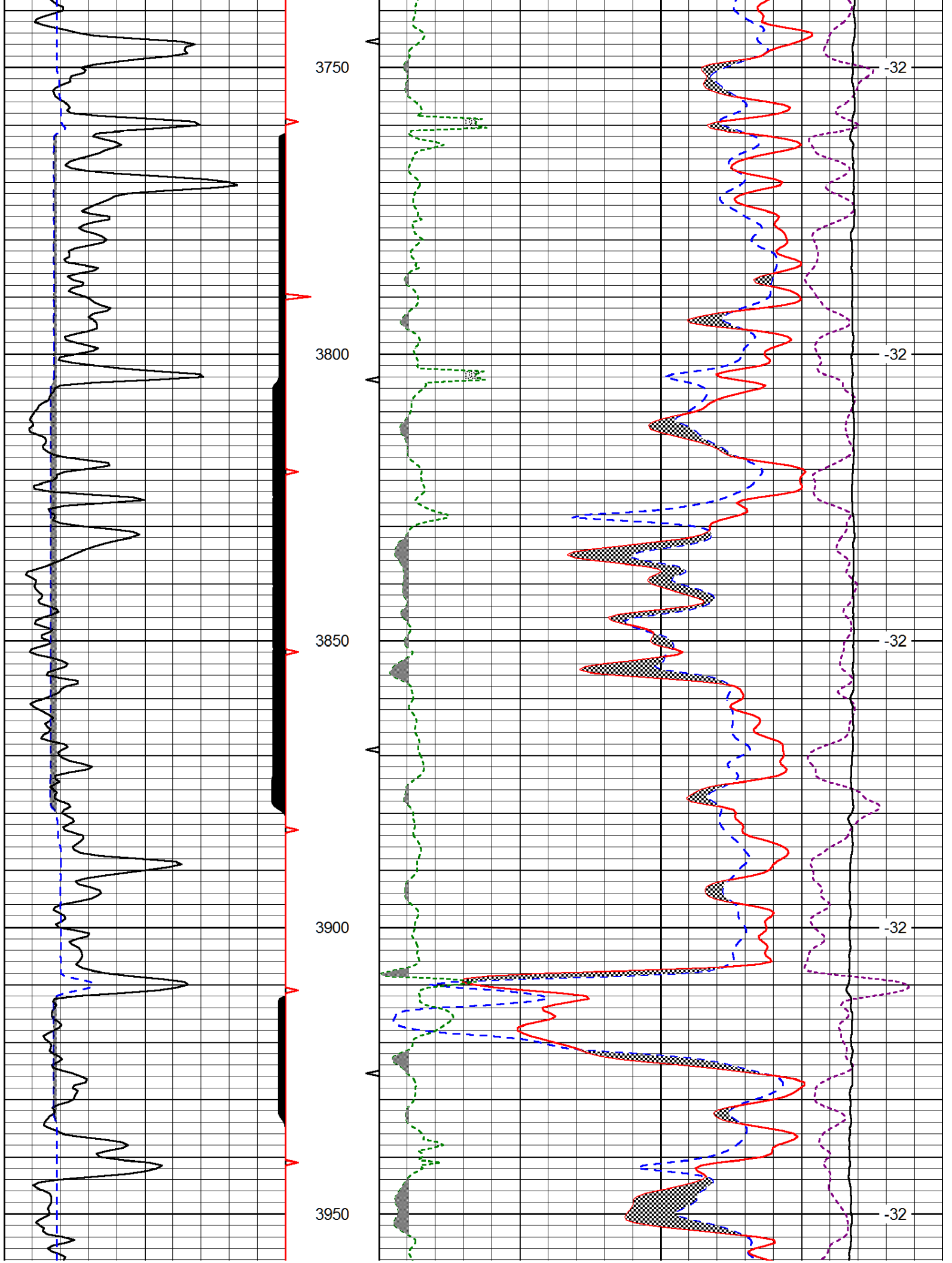
Database File: griffin\_122012hd.db  
 Dataset Pathname: dil/grfstack  
 Presentation Format: cndlspec  
 Dataset Creation: Thu Dec 20 06:20:47 2012  
 Charted by: Depth in Feet scaled 1:240

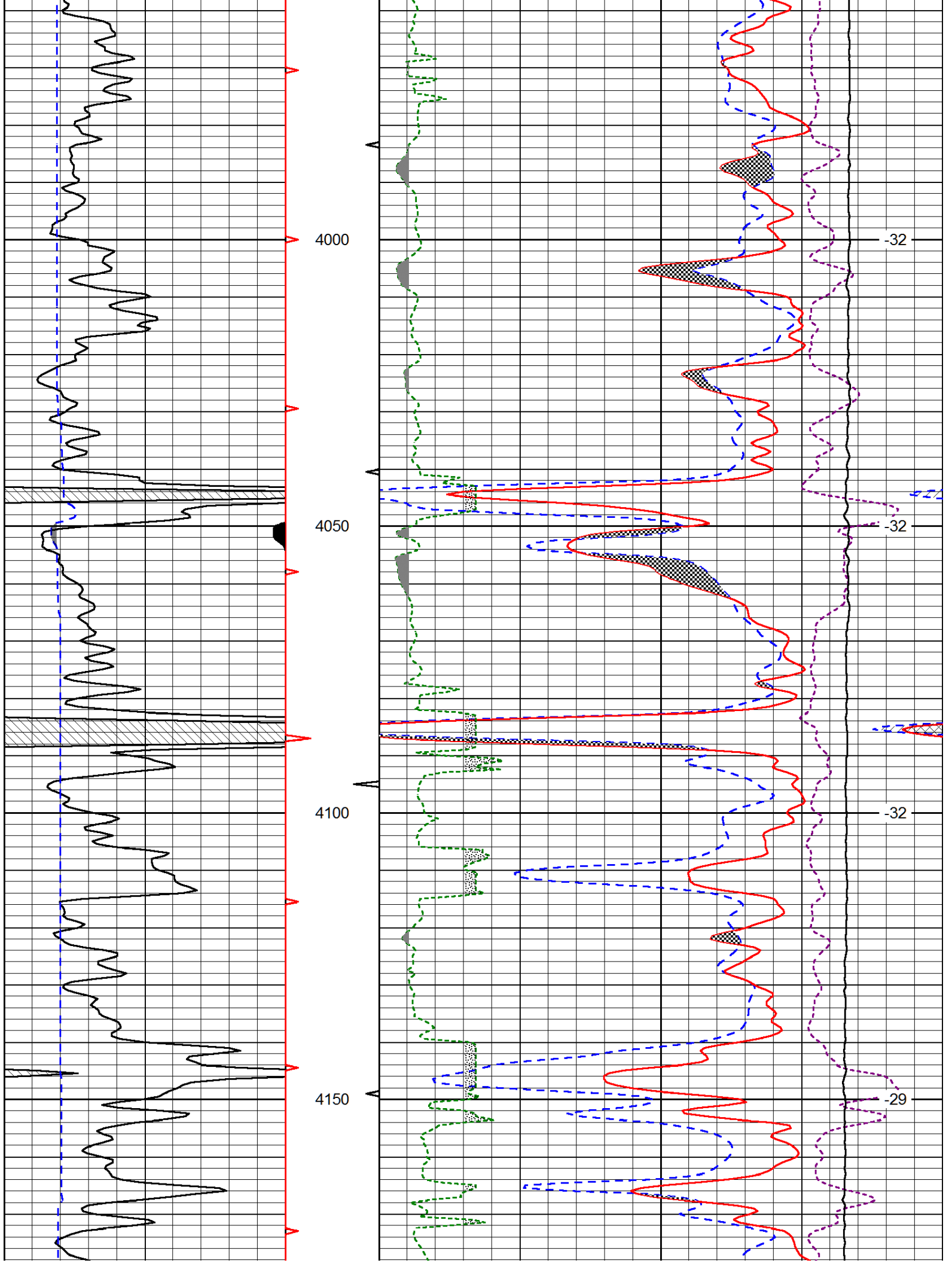


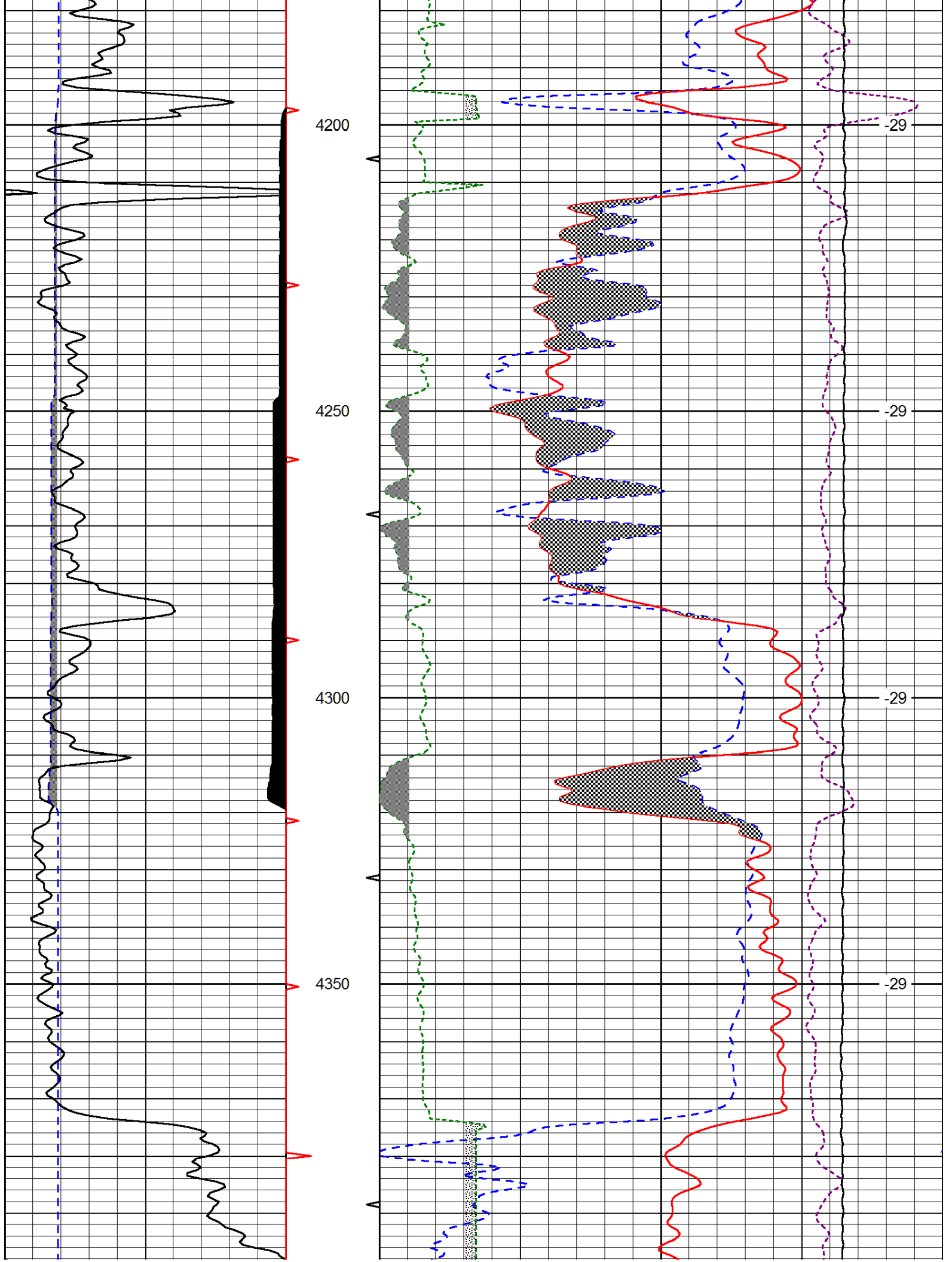




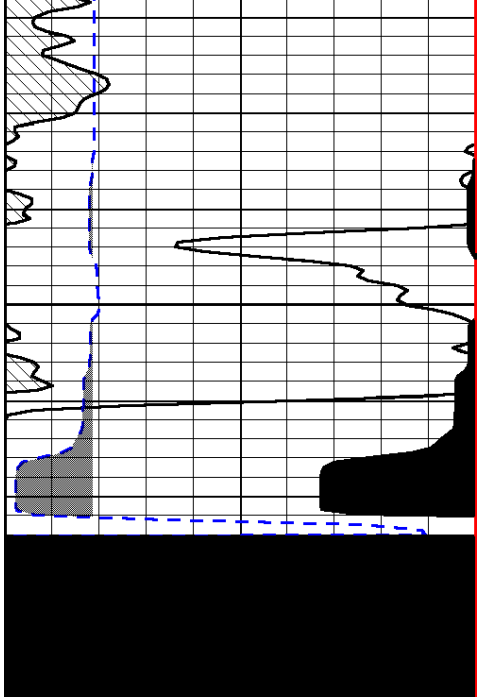




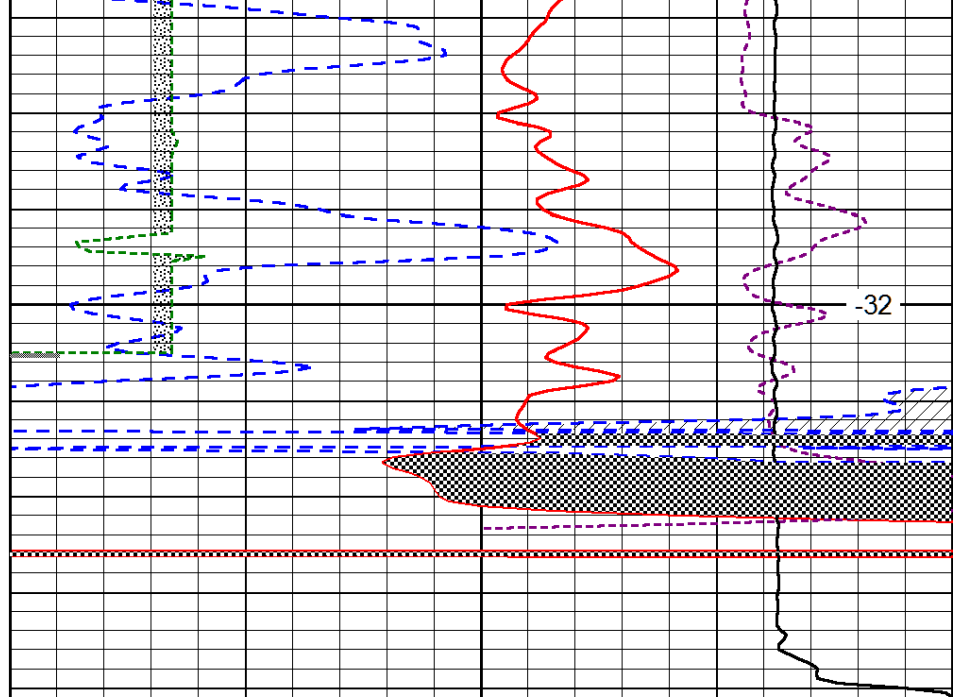








4650



-32

0	Gamma Ray (GAPI)	150
6	Caliper (in)	16

30	CNLS (pu)			-10	
30	Compensated Density (2.71 ma) (pu)			-10	
2.625	DGA (g/cc)	3.425	-0.25	Correction (g/cc)	0.25
10000	Line Tension (lb)			0	

LSPD  
(ft/min)