

LITHOLOGY STRIP LOG

WellSight Systems
Scale 1:240 (5"=100') Imperial
Measured Depth Log

Well Name: **NEW ELOISE #1**
 Location: **NE SW SW SE**
 License Number: **API: 15-007-23911-00-00**
 Spud Date: **July 13, 2012**
 Surface Coordinates: **462' FSL, 2275' FEL Section 6-Twp 35 South - Rge 11 West**
 Region: **Barber County, Kansas**
 Drilling Completed: **July 30, 2012**
 Bottom Hole: **Vertical Hole**
 Coordinates: **1376**
 Ground Elevation (ft): **1376**
 Logged Interval (ft): **4500**
 Formation: **VIOLA**
 Type of Drilling Fluid: **Chemical Mud, Displace at 3583', 2nd Time at 4500'**
 K.B. Elevation (ft): **1387**
 To: **5247**
 Total Depth (ft): **5247**

Printed by MUD.LOG from WellSight Systems 1-800-447-1534 www.WellSight.com

OPERATOR

Company: **Indian Oil Company, INC**
 Address: **PO BOX 209
 2507 SE US 160 HWY
 Medicine Lodge, KS 67104-0209**

GEOLOGIST

Name: **W. Scott Alberg**
 Company: **Alberg Petroleum, LLC**
 Address: **609 Meadowlark Lane
 Pratt, Kansas 67124**

FORMATION TOPS

SAMPLE TOPS	LOG TOPS
B/KC	4580(-3193)
PAWNEE	4680(-3293)
CHEROKEE GROUP	4740(-3353)
MISSISSIPPIAN	4800(-3413)
KINDERHOOK SHALE	5030(-3643)
WOODFORD SHALE	5109(-3722)
MSNER SAND	5131(-3744)
VIOLA	5138(-3751)
SIMPSON GROUP	nde
SIMPSON WILCOX	nde
MCLISH SHALE	nde
RTD	nde
LTD	5245(-3858)

COMMENTS

Surface Casing: Set 8 5/8" at 750' with 400 sxs AA 2% gel, Cement did circulate.
 Production Casing: Ran 5 1/2" Casing
 Deviation Surveys: 760' 3/4,
 Contractor Bit Record: 1- 12 1/4 out @ 760'
 2- 7 7/8" out at 4985'.
 3- 7 7/8" PDC drill out cement and new hole

Gas Detector: Jumping Leaf, LLC, David Gould
 Mud System: Mud Co, Brad Bortz, Engineer
 DSTs: None
 Logged By Log Tech
 LTD 5245'

DSTs

CREWS

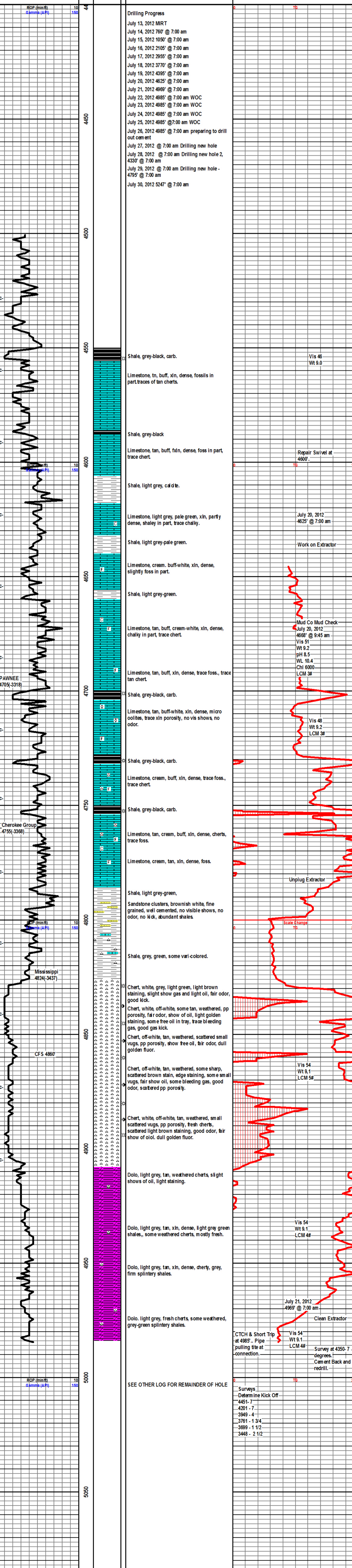
Val Drilling Rig #5
 Tool Pusher - Randy Smith
 Daylights - Andy Brown
 Evening - Jeff Hood
 Morning - Jim Stevenson

ROCK TYPES

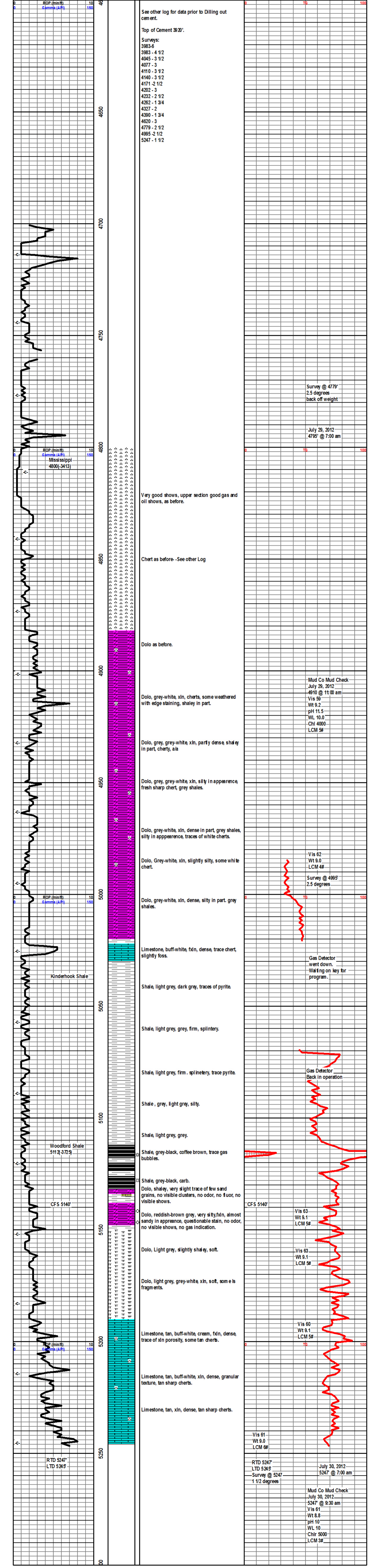
Anhy	Congl	Lmst	Black sh
Bent	Sdy dolo	Mrst	Gry sh
Brec	Shy dolo	Salt	Shale
Cht	Dol	Siltst	Shytsst
Clyst	Gyp	Siltst	Siltsh
Coal	Sdy lmst	Ss	

ACCESSORIES

MINERAL Anhy	Chlorite	Pelec	Grysh
MINERAL Arg	Dol	Pellet	Grysit
MINERAL Bent	Sand	Pisolite	Lms
MINERAL Bit	Silty	Plant	Sandyms
MINERAL Brecfrag	FOSSIL Algae	Strom	Sh
MINERAL Calc	FOSSIL Amph	Fuss	Siltstn
MINERAL Carb	FOSSIL BeIm	Oomoldic	
MINERAL Chtdk	FOSSIL Bioclst	STRINGER Anhy	Boundst
MINERAL Chttt	FOSSIL Brach	STRINGER Arg	Chalky
MINERAL Dol	FOSSIL Bryozoa	STRINGER Bent	Cryxln
MINERAL Ferrpel	FOSSIL Cephala	STRINGER Coal	Earthy
MINERAL Glau	FOSSIL Coral	STRINGER Dol	Finexln
MINERAL Gyp	FOSSIL Crin	STRINGER Gyp	Grainst
MINERAL Marl	FOSSIL Echin	STRINGER Ls	Lithogr
MINERAL Nodule	FOSSIL Fish	STRINGER Mrst	Microxln
MINERAL Phos	FOSSIL Foram	STRINGER Siltstrg	Mudst
MINERAL Pyr	FOSSIL Fossil	STRINGER Ssstrg	Packst
MINERAL Salt	FOSSIL Gastro	STRINGER Carbst	Wackest
MINERAL Sandy	FOSSIL Oolite	STRINGER Clystn	
MINERAL Silt	FOSSIL Ostra	STRINGER Dol	



SEE OTHER LOG FOR REMAINDER OF HOLE



See other log for data prior to Dilling out cement.

Top of Cement 3920'

Surveys:

- 3983 - 4 1/2
- 4045 - 3 1/2
- 4077 - 3
- 4110 - 3 1/2
- 4140 - 3 1/2
- 4171 - 2 1/2
- 4202 - 3
- 4232 - 2 1/2
- 4262 - 1 3/4
- 4327 - 2
- 4390 - 1 3/4
- 4620 - 3
- 4779 - 2 1/2
- 4995 - 2 1/2
- 5247 - 1 1/2

Survey @ 4779'
2.5 degrees
back off weight

July 29, 2012
4795' @ 7:00 am

Very good shows, upper section good gas and oil shows, as before.

Chert as before - See other Log

Dolo as before.

Mud Co Mud Check
July 29, 2012
4910 @ 11:00 am
Vis 59
Wt 9.2
pH 11.5
WL 10.0
Chl 4000
LCM 5#

Dolo, grey-white, xln, cherts, some weathered with edge staining, shaley in part.

Dolo, grey, grey-white xln, partly dense shaley in part, cherty, a/a

Dolo, grey, grey-white xln, silty in appearance, fresh sharp chert, grey shales.

Dolo, grey-white, xln, dense in part, grey shales, silty in appearance, traces of white cherts.

Vis 62
Wt 9.0
LCM 4#

Survey @ 4995'
2.5 degrees

Dolo, Grey-white, xln, slightly silty, some white chert.

Dolo, grey-white, xln, dense, silty in part, grey shales.

Gas Detector went down.
Waiting on key for program.

Limestone, buff-white, fxl, dense, trace chert, slightly foss.

Shale, light grey, dark grey, traces of pyrite.

Shale, light grey, grey, firm, splintery.

Shale, light grey, firm, splintery, trace pyrite.

Gas Detector Back in operation

Shale, grey, light grey, silty.

Shale, light grey, grey.

Shale, grey-black, coffee brown, trace gas bubbles.

Shale, grey-black, carb.

Dolo, shaley, very slight trace of few sand grains, no visible clusters, no odor, no fluor, no visible shows.

CFS 5140'

Vis 63
Wt 9.1
LCM 5#

Dolo, reddish-brown, very silty, fxl, almost sandy in appearance, questionable stain, no odor, no visible shows, no gas indication.

Vis 63
Wt 9.1
LCM 5#

Dolo, Light grey, slightly shaley, soft.

Dolo, light grey, grey-white xln, soft, some ls fragments.

Vis 60
Wt 9.1
LCM 5#

Limestone, tan, buff-white, cream, fxl, dense, trace of xln porosity, some tan cherts.

Limestone, tan, buff-white, xln, dense, granular texture, tan sharp cherts.

Limestone, tan, xln, dense, tan sharp cherts.

Vis 61
Wt 9.0
LCM 6#

RTD 5247 LTD 5245 July 30, 2012 Survey @ 5247 5247' @ 7:00 am 1 1/2 degrees

Mud Co Mud Check July 30, 2012 5247' @ 9:30 am Vis 61 Wt 8.8 pH 10 WL 10 Chr 5000 LCM 3#

Kinderhook Shale

Woodford Shale 5112-3725

CFS 5140'

RTD 5247 LTD 5245

ROP (min/ft) 10
Gamma (API) 150

ROP (min/ft) 10
Gamma (API) 150
Mississippi 4800(-3413)

ROP (min/ft) 10
Gamma (API) 150

ROP (min/ft) 10
Gamma (API) 150

ROP (min/ft) 10
Gamma (API) 150