



**COMPLETION
& PRODUCTION
SERVICES CO.**

**MICRO
LOG**

Company BLACK DIAMOND OIL, INC.
Well GLENNEMEIER #1
Field
County NORTON
State KANSAS

Company BLACK DIAMOND OIL, INC.
Well GLENNEMEIER #1
Field
County NORTON State KANSAS

Location: API # : 15-137-20697-0000
1630' FNL & 530' FWL
SEC 4 TWP 5S RGE 21W
Permanent Datum GROUND LEVEL Elevation 2017
Log Measured From KELLY BUSHING 5' A.G.L.
Drilling Measured From KELLY BUSHING
Other Services
CDL/CNL
DIL/SON
Elevation
K.B. 2022
D.F. 2020
G.L. 2017

Date	4/18/14		
Run Number	TWO		
Depth Driller	3530		
Depth Logger	3532		
Bottom Logged Interval	3514		
Top Log Interval	2900		
Casing Driller	8 5/8" @ 216		
Casing Logger	216		
Bit Size	7 7/8"		
Type Fluid in Hole	CHEMICAL MUD	CHLORIDES 2000 PPM	
Density / Viscosity	9.2/57		
pH / Fluid Loss	10.0/7.6		
Source of Sample	FLOWLINE		
Rm @ Meas. Temp	1.0 @ 80F		
Rmt @ Meas. Temp	.75 @ 80F		
Rmc @ Meas. Temp	1.2 @ 80F		
Source of Rmf / Rmc	MEASUREMENT		
Rm @ BHT	.71 @ 112F		
Time Circulation Stopped	2 HOURS		
Time Logger on Bottom	3:15 P.M.		
Maximum Recorded Temperature	112F		
Equipment Number	4010		
Location	HAYS, KANSAS		
Recorded By	JASON CAPPELLUCCI		
Witnessed By	JEFF LAWLER		

<<< Fold Here >>>

All interpretations are opinions based on inferences from electrical or other measurements and we cannot and do not guarantee the accuracy or correctness of any interpretation, and we shall not, except in the case of gross or willful negligence on our part, be liable or responsible for any loss, costs, damages, or expenses incurred or sustained by anyone resulting from any interpretation made by any of our officers, agents or employees. These interpretations are also subject to our general terms and conditions set out in our current Price Schedule.

Comments

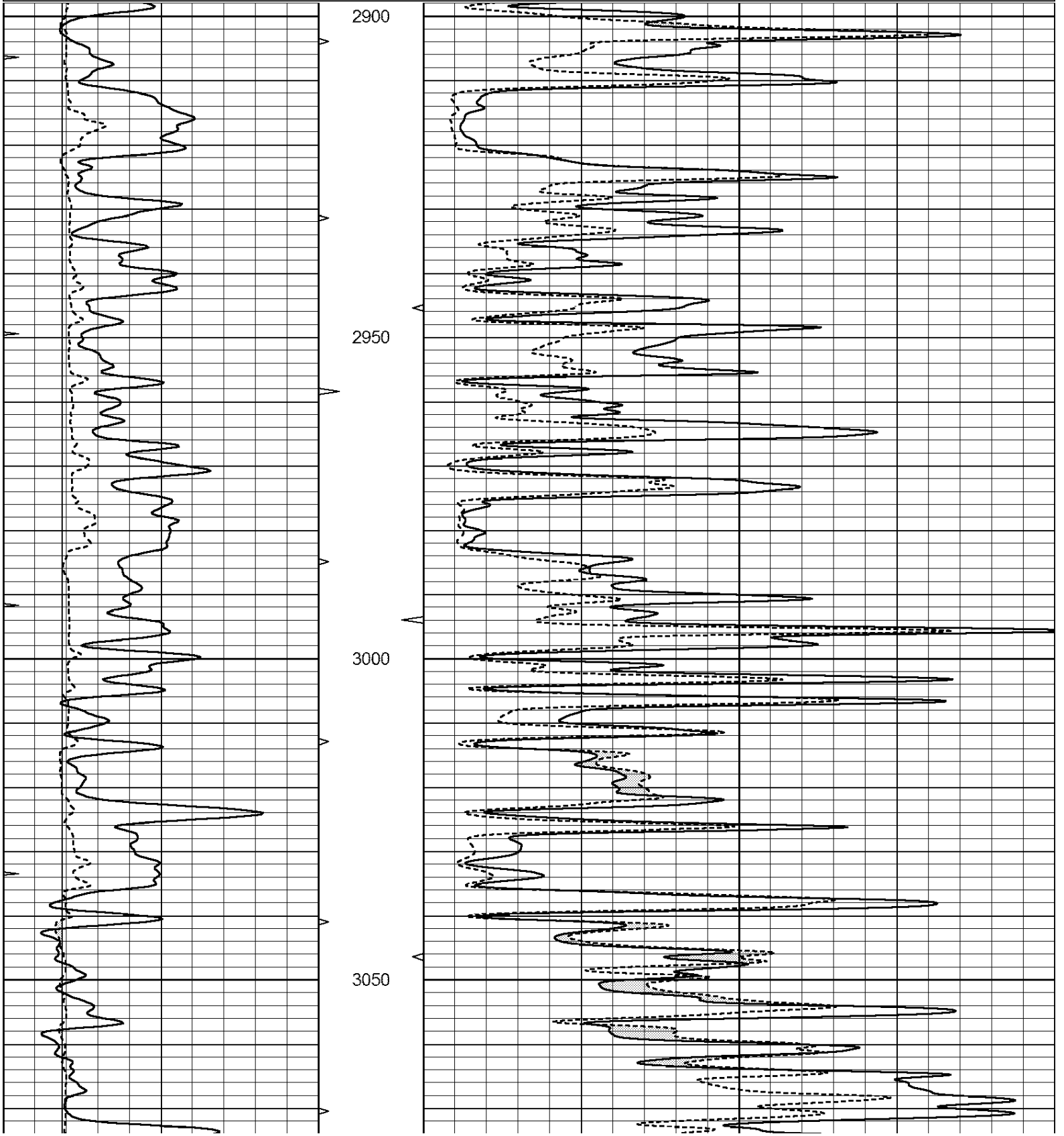
THANK YOU FOR USING NABORS, HAYS, KS. (785) 628-6395
DIRECTIONS:
LOGAN, KS. - WEST TO RD. W10 - 1/2 SOUTH - EAST INTO

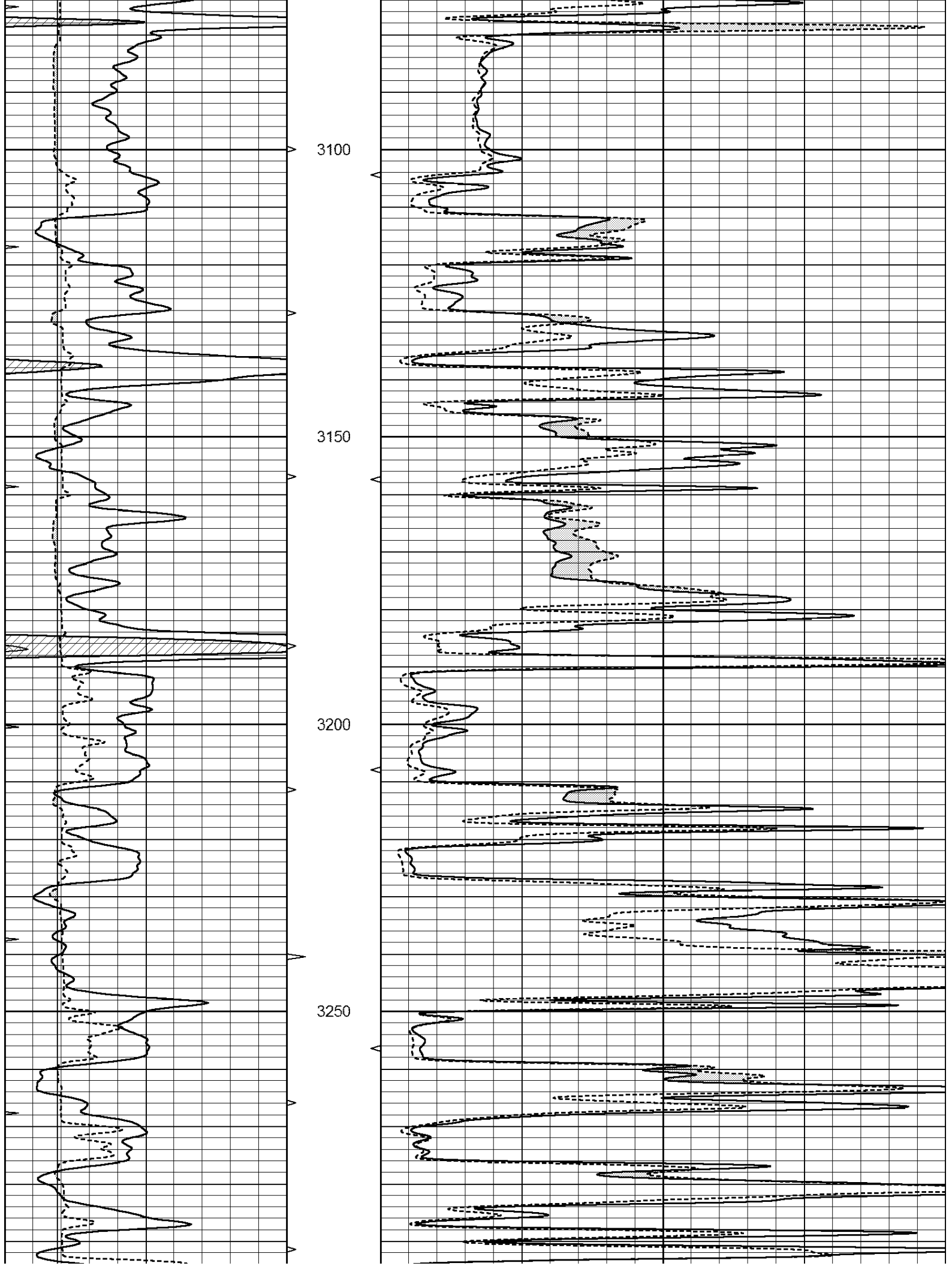


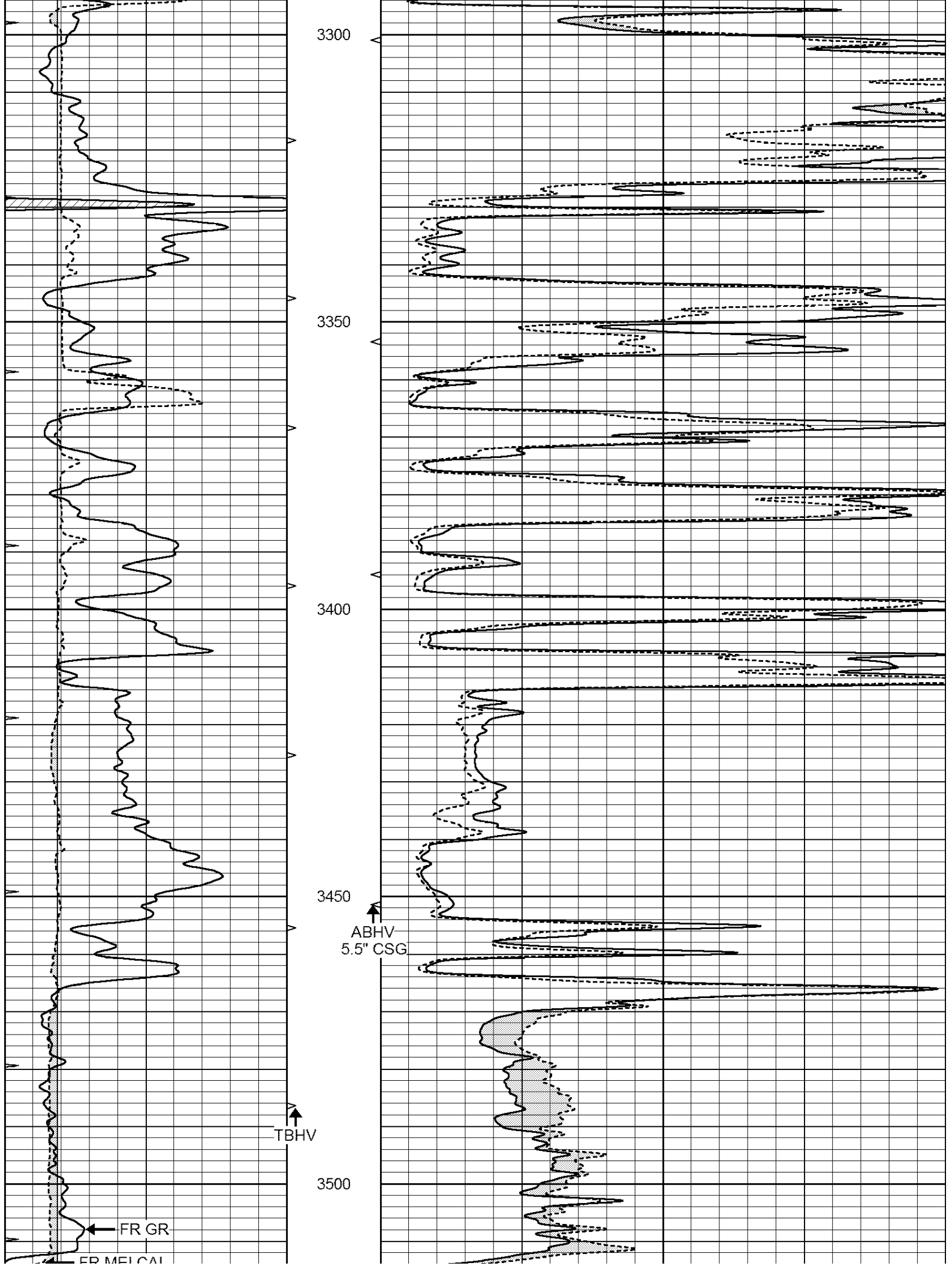
MAIN SECTION

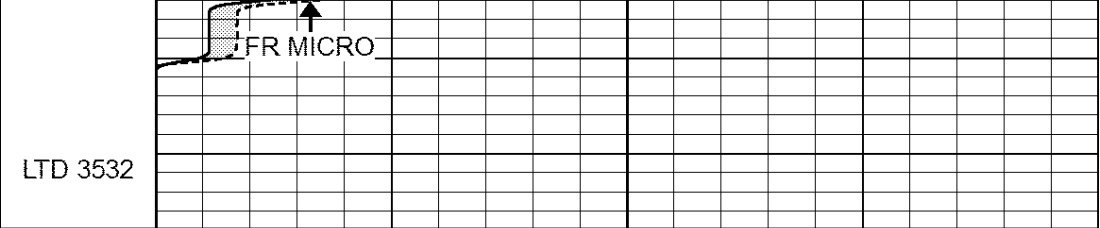
Database File: 24228ddn.db
 Dataset Pathname: pass7.1
 Presentation Format: _micro
 Dataset Creation: Fri Apr 18 18:23:40 2014 by Calc Open-Cased 090629
 Charted by: Depth in Feet scaled 1:240

0	GAMMA RAY (GAPI)	150	ABHV	0	MEL1.5 (Ohm-m)	40
6	CALIPER (in)	16	10 (ft3)	0	MEL2.0 (Ohm-m)	40
0	MINMK	20	TBHV			
			0 (ft3)	10		









LTD 3532

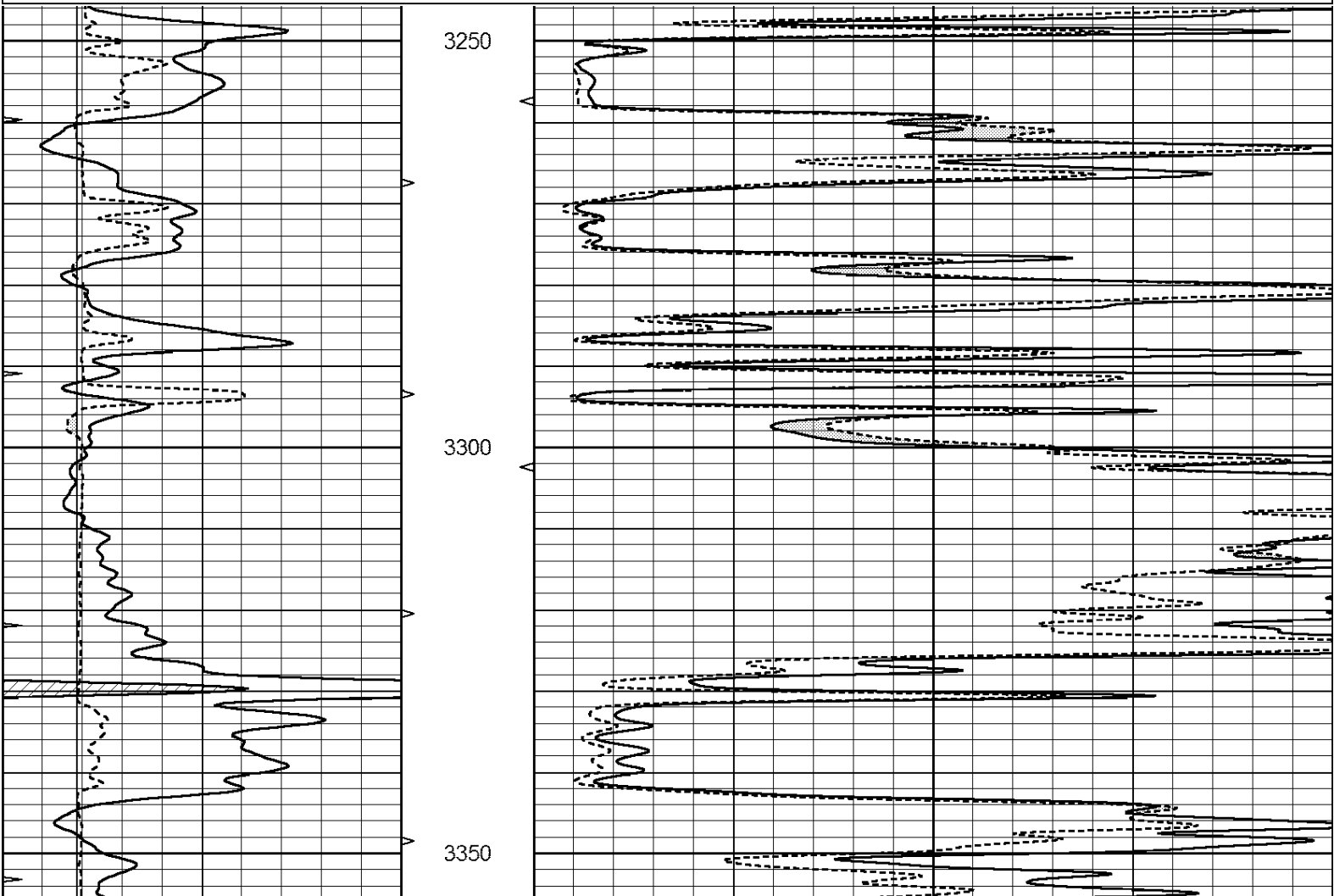
0	GAMMA RAY (GAPI)	150	ABHV	0	MEL1.5 (Ohm-m)	40
6	CALIPER (in)	16	10 (ft3)	0	MEL2.0 (Ohm-m)	40
0	MINMK	20	TBHV			
			0 (ft3)	10		

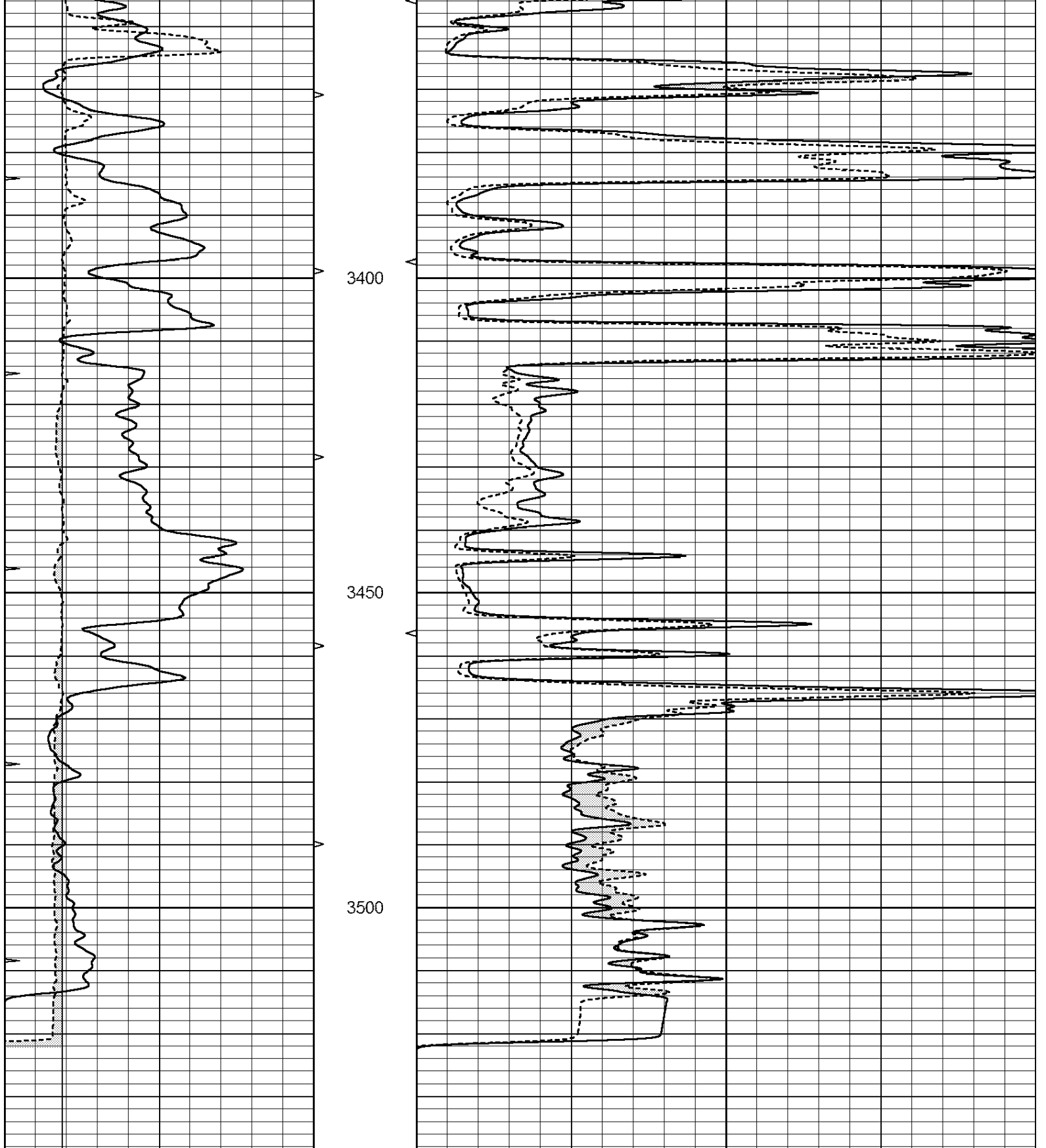


REPEAT SECTION

Database File: 24228ddn.db
 Dataset Pathname: pass6.1
 Presentation Format: _micro
 Dataset Creation: Fri Apr 18 18:18:29 2014 by Calc Open-Cased 090629
 Charted by: Depth in Feet scaled 1:240

0	GAMMA RAY (GAPI)	150	ABHV	0	MEL1.5 (Ohm-m)	40
6	CALIPER (in)	16	10 (ft3)	0	MEL2.0 (Ohm-m)	40
0	MINMK	20	TBHV			
			0 (ft3)	10		





0	GAMMA RAY (GAPI)	150	ABHV	0	MEL1.5 (Ohm-m)	40
6	CALIPER (in)	16	10 (ft3)	0	MEL2.0 (Ohm-m)	40
0	MINMK	20	TBHV			
			0 (ft3)	10		

Calibration Report

Database File: 24228ddn.db
 Dataset Pathname: pass6.1

MICRO Calibration Report

Serial Number:	MICRO6
Tool Model:	PROBE
Performed:	Fri Mar 14 21:54:54 2014

Caliper Calibration:	Gain=5.542	Offset=-0.920
	Low Cal	High Cal
References	8.000	14.000
Readings	1.431	2.513

1.5" Calibration:	Gain=28.075	Offset=0.000
	Low Cal	High Cal
References	0.000	20.000
Readings	0.004	1.196

2" Calibration:	Gain=34.000	Offset=-0.600
	Low Cal	High Cal
References	0.000	20.000
Readings	0.006	0.913

Gamma Ray Calibration Report

Serial Number:	GR6
Tool Model:	OPEN
Performed:	Fri Nov 29 08:34:37 2013

Calibrator Value:	150.0	GAPI
Background Reading:	0.0	cps
Calibrator Reading:	276.0	cps
Sensitivity:	0.6035	GAPI/cps