



Pioneer Energy Services

Gamma Ray Correlation Log

[illegible]

<<< Fold Here >>>

All interpretations are opinions based on inferences from electrical or other measurements and we cannot and do not guarantee the accuracy or correctness of any interpretation, and we shall not, except in the case of gross or willful negligence on our part, be liable or responsible for any loss, costs, damages, or expenses incurred or sustained by anyone resulting from any interpretation made by any of our officers, agents or employees. These interpretations are also subject to our general terms and conditions set out in our current Price Schedule.

Comments

Thank you for using Pioneer Energy Services
(620) 672-8300

Canton, 7.5N,
W & N into



Main Pass

Database File:

lowen-schroeder-3.db

Dataset Pathname:

grccl/pass3

Presentation Format:

gr-ccl

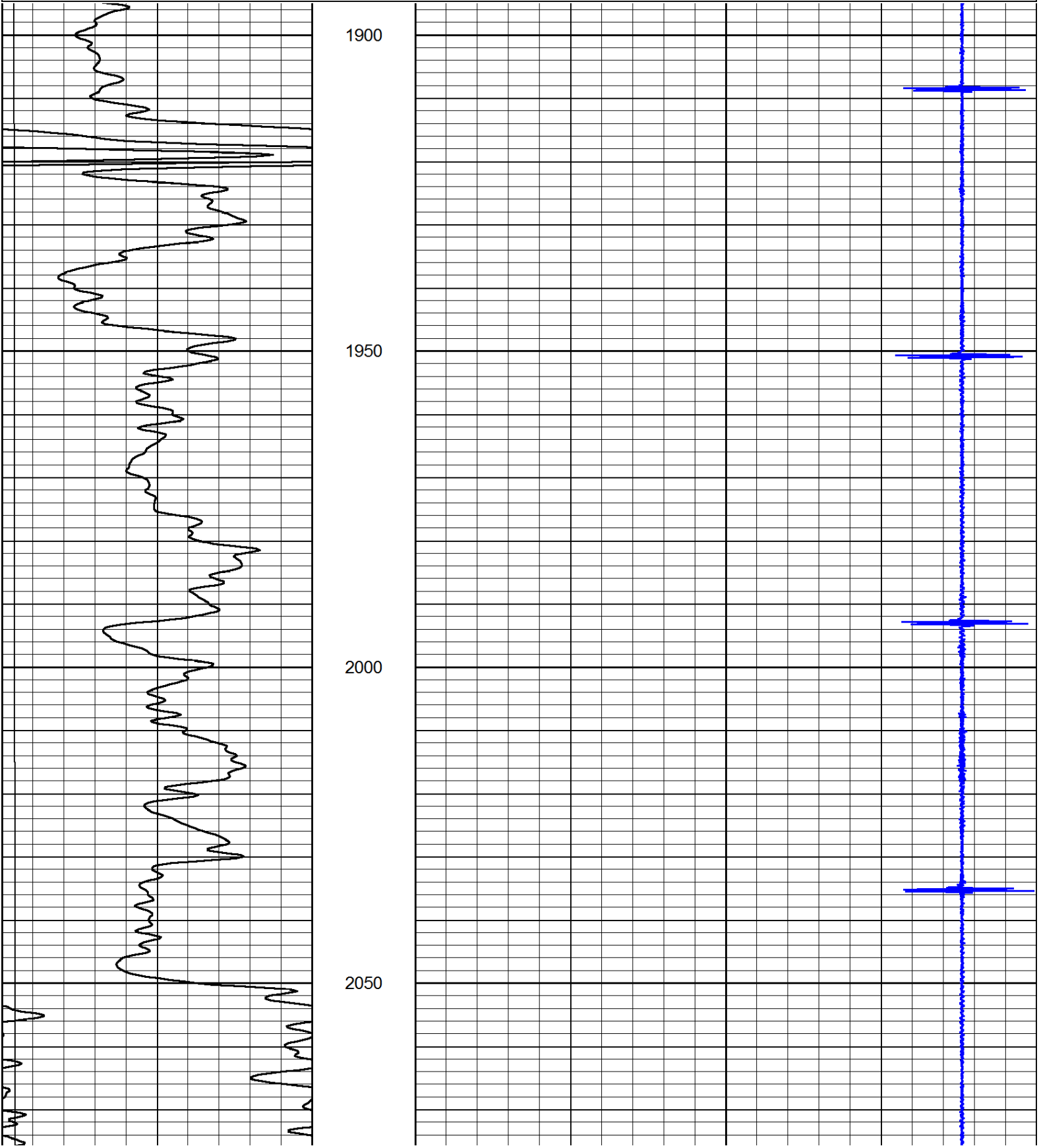
Dataset Creation:

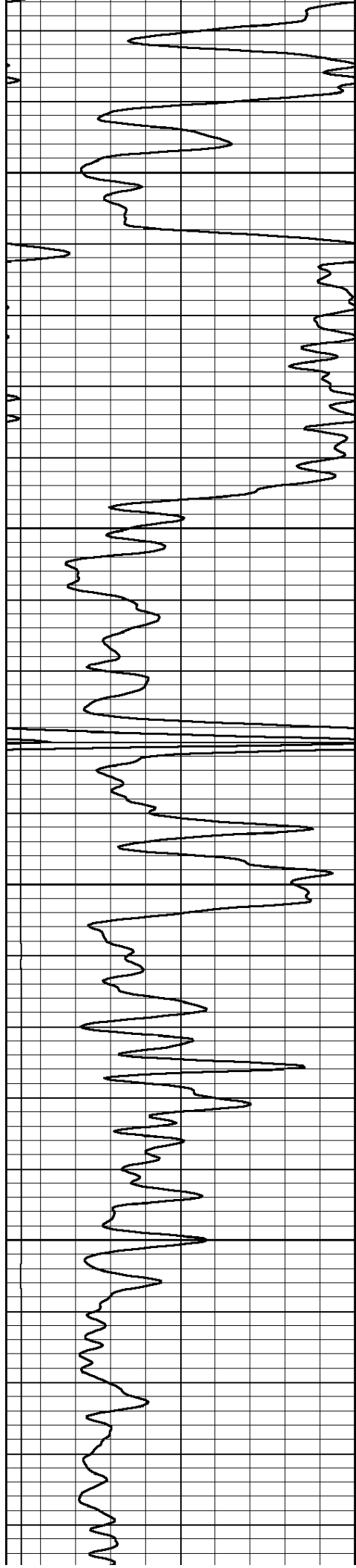
Mon Jul 30 09:24:51 2012 by Log SCH 110630

Charted by:

Depth in Feet scaled 1:240

0	Gamma Ray	150	38	Casing Collars	-12
0	lten (lb)	5000			



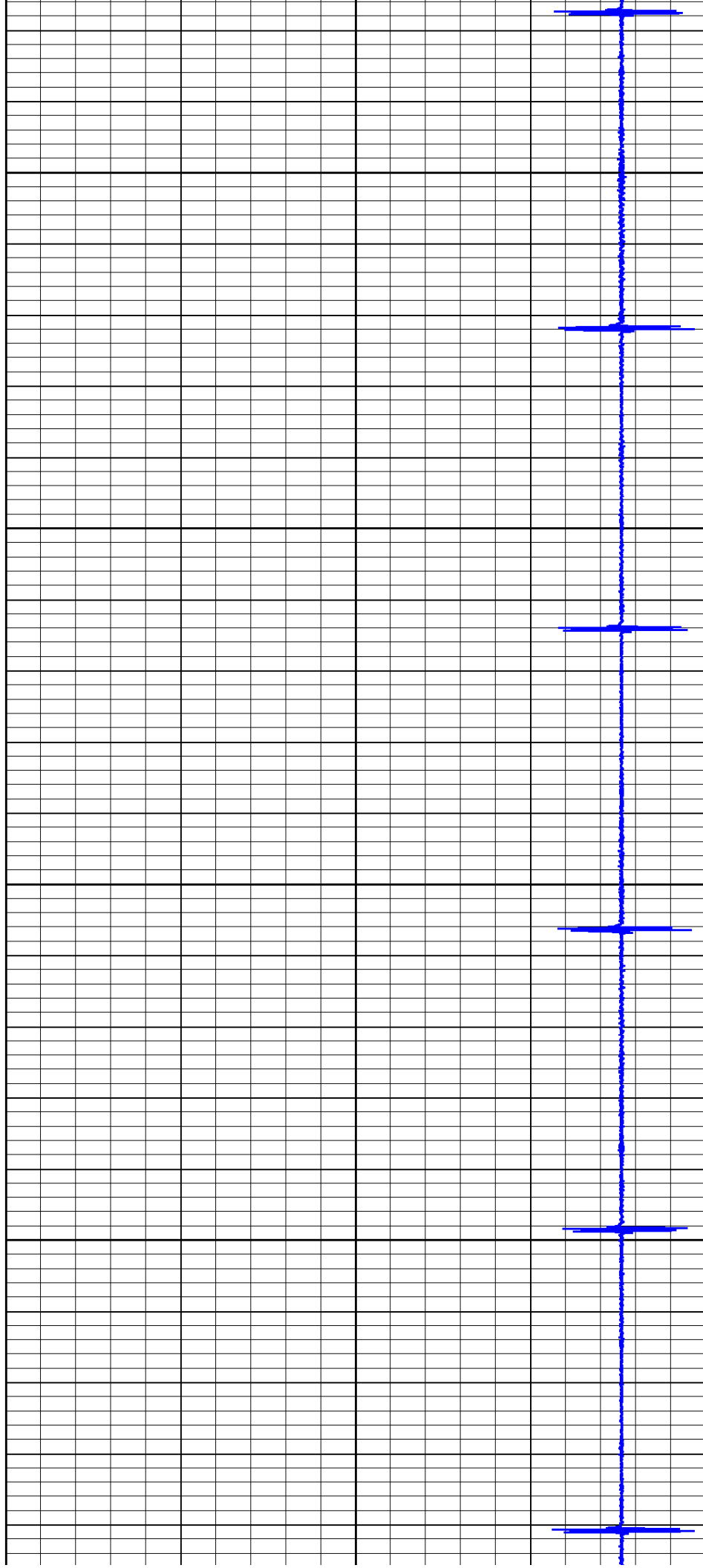


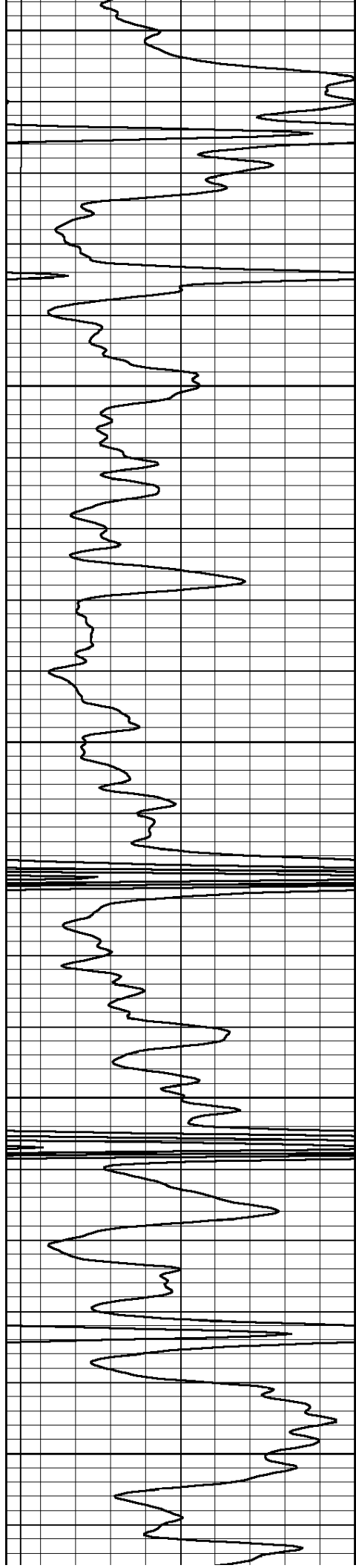
2100

2150

2200

2250





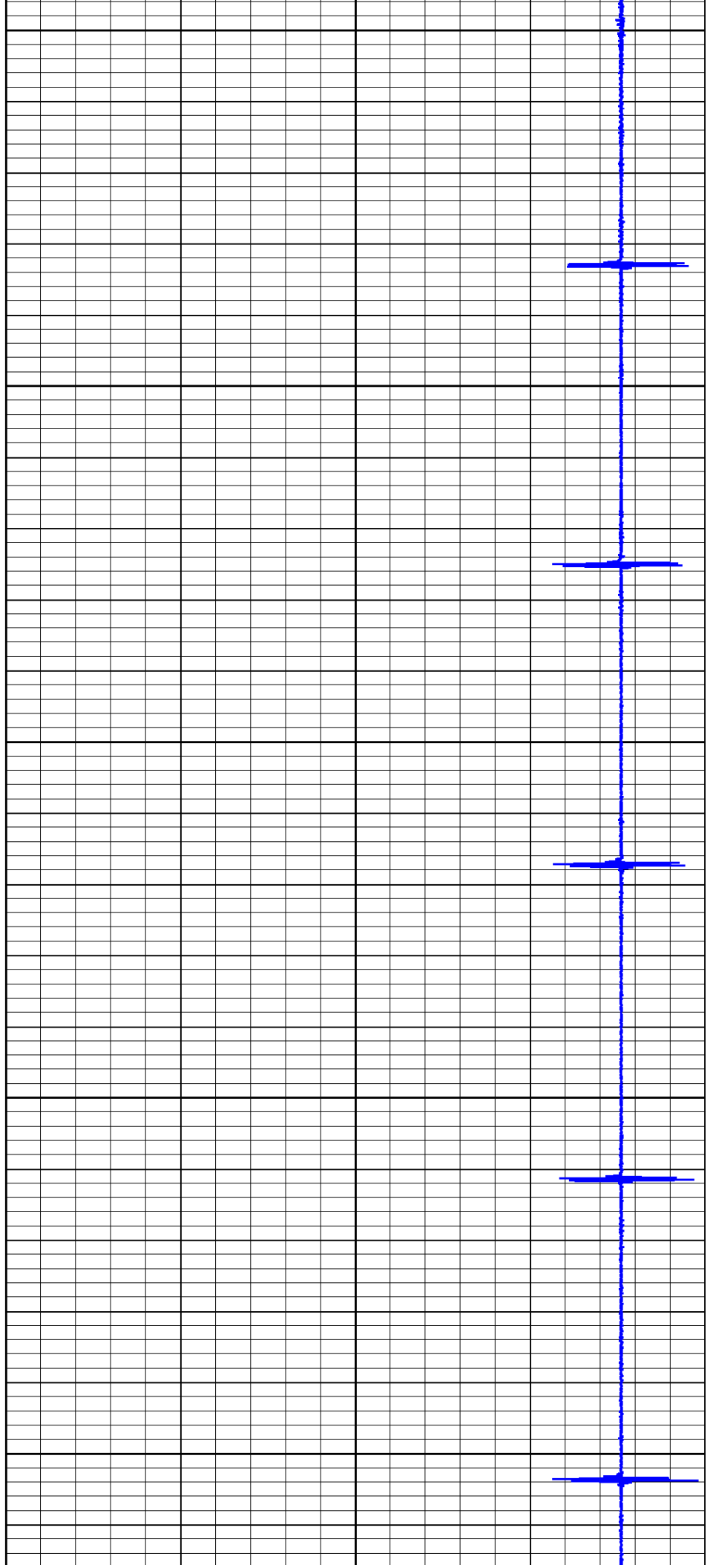
2300

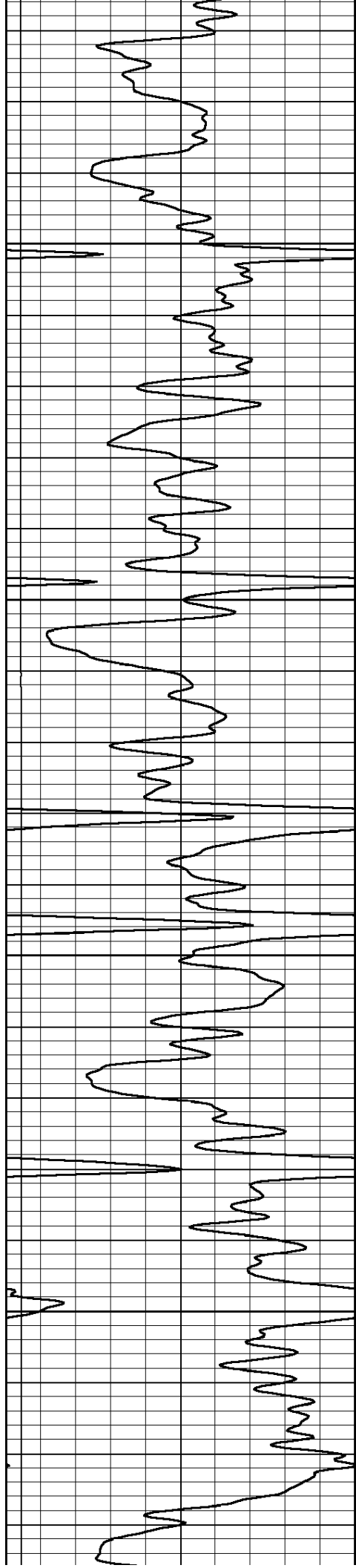
2350

2400

2450

2500



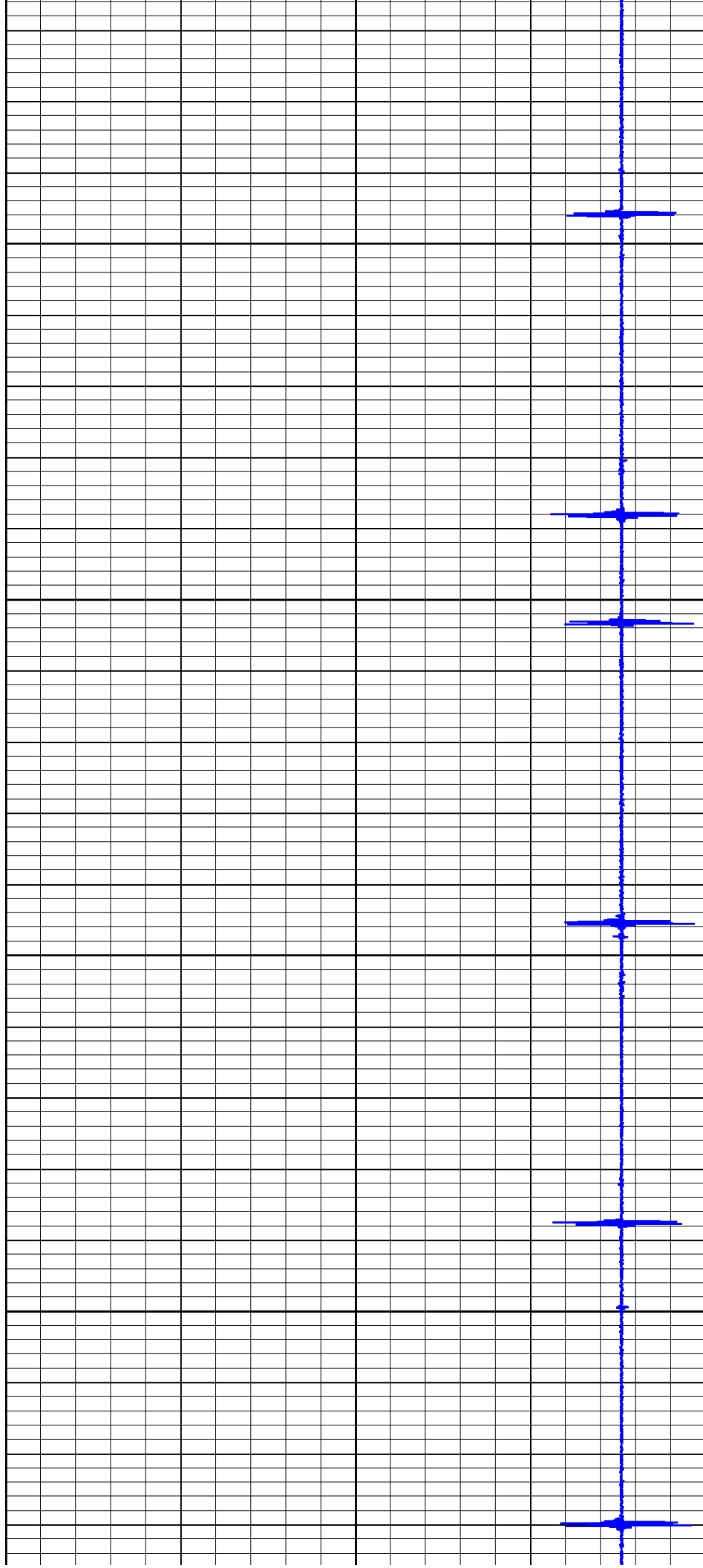


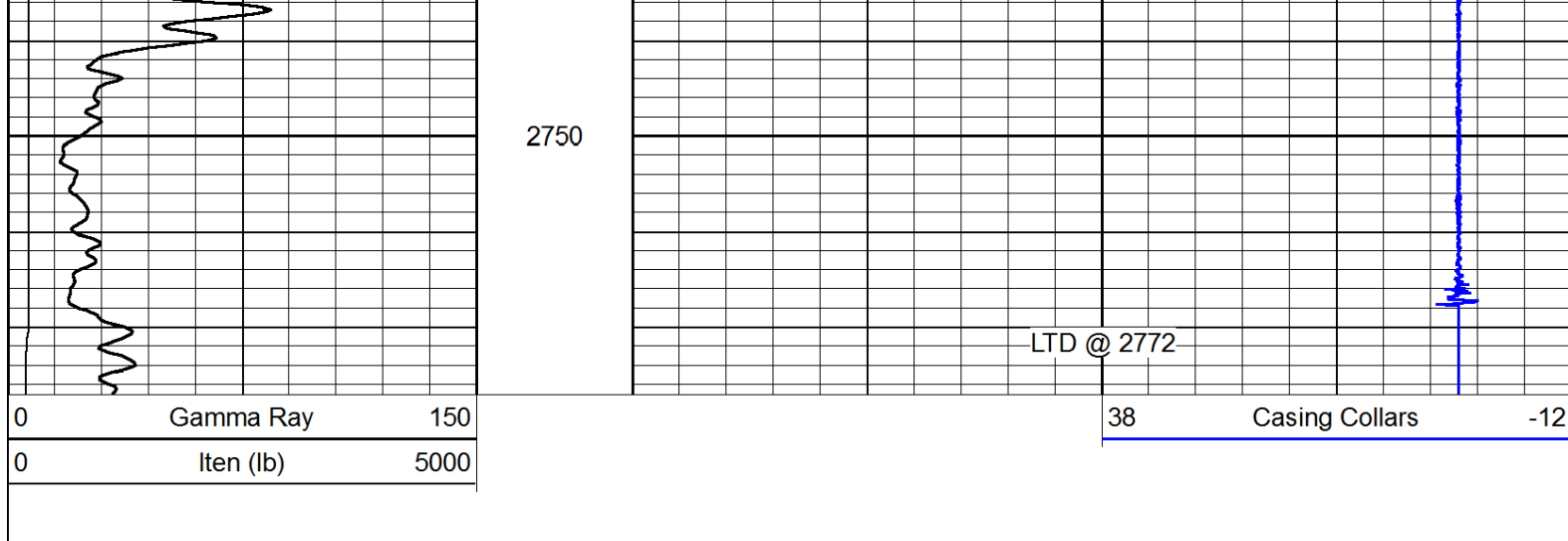
2550

2600

2650

2700





Pioneer Energy Services

Repeat Section

Database File: lowen-schroeder-3.db
 Dataset Pathname: grccl/pass2
 Presentation Format: gr-ccl
 Dataset Creation: Mon Jul 30 09:19:26 2012 by Log SCH 110630
 Charted by: Depth in Feet scaled 1:240

