

**COMPLETION
& PRODUCTION
SERVICES CO.**

**COMPENSATED
DENSITY / NEUTRON
LOG**

Company TREK AEC, LLC
Well DOPITA A #16
Field DOPITA
County ROOKS
State KANSAS

Company TREK AEC, LLC
Well DOPITA A #16
Field DOPITA
County ROOKS
State KANSAS

Location: API # : 15-163-24094-0000
670' FSL & 1785' FEL
SW - NE - SW - SE
SEC 31 TWP 8S RGE 17W
Permanent Datum GROUND LEVEL Elevation 3165
Log Measured From KELLY BUSHING 5' A.G.L.
Drilling Measured From KELLY BUSHING
Other Services DILMEL
Elevation
K.B. 3170
D.F. 3168
G.L. 3165

| | | | |
|------------------------------|---------------|--------------------|--|
| Date | 12/14/12 | | |
| Run Number | ONE | | |
| Depth Driller | 3480 | | |
| Depth Logger | 3478 | | |
| Bottom Logged Interval | 3454 | | |
| Top Log Interval | 2800 | | |
| Casing Driller | 8 5/8" @ 262' | | |
| Casing Logger | | | |
| Bit Size | 7 7/8" | | |
| Type Fluid in Hole | CHEMICAL MUD | CHLORIDES 3000 PPM | |
| Density / Viscosity | 9.2 / 54 | | |
| pH / Fluid Loss | 9.5 / 7.8 | | |
| Source of Sample | FLOWLINE | | |
| Rm @ Meas. Temp | 0.80 @ 70F | | |
| Rmt @ Meas. Temp | 0.60 @ 70F | | |
| Rmc @ Meas. Temp | 0.96 @ 70F | | |
| Source of Rmf / Rmc | MEASUREMENT | | |
| Rm @ BHT | 0.50 @ 111F | | |
| Time Circulation Stopped | 2 HOURS | | |
| Time Logger on Bottom | | | |
| Maximum Recorded Temperature | 111F | | |
| Equipment Number | 4010 | | |
| Location | HAYS, KANSAS | | |
| Recorded By | JEFF GRONWEG | | |
| Witnessed By | CURTIS COVEY | | |

<<< Fold Here >>>

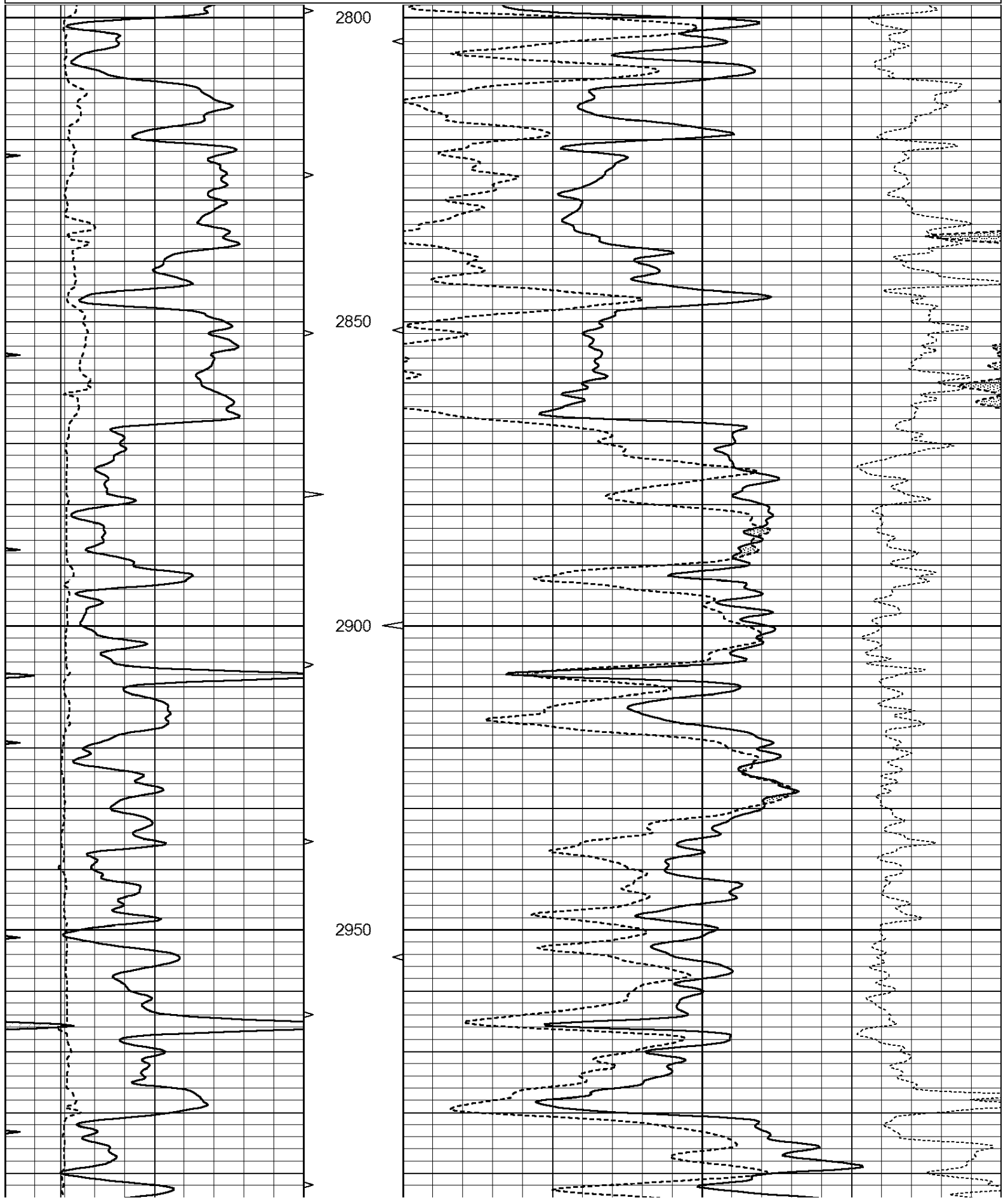
All interpretations are opinions based on inferences from electrical or other measurements and we cannot and do not guarantee the accuracy or correctness of any interpretation, and we shall not, except in the case of gross or willful negligence on our part, be liable or responsible for any loss, costs, damages, or expenses incurred or sustained by anyone resulting from any interpretation made by any of our officers, agents or employees. These interpretations are also subject to our general terms and conditions set out in our current Price Schedule.

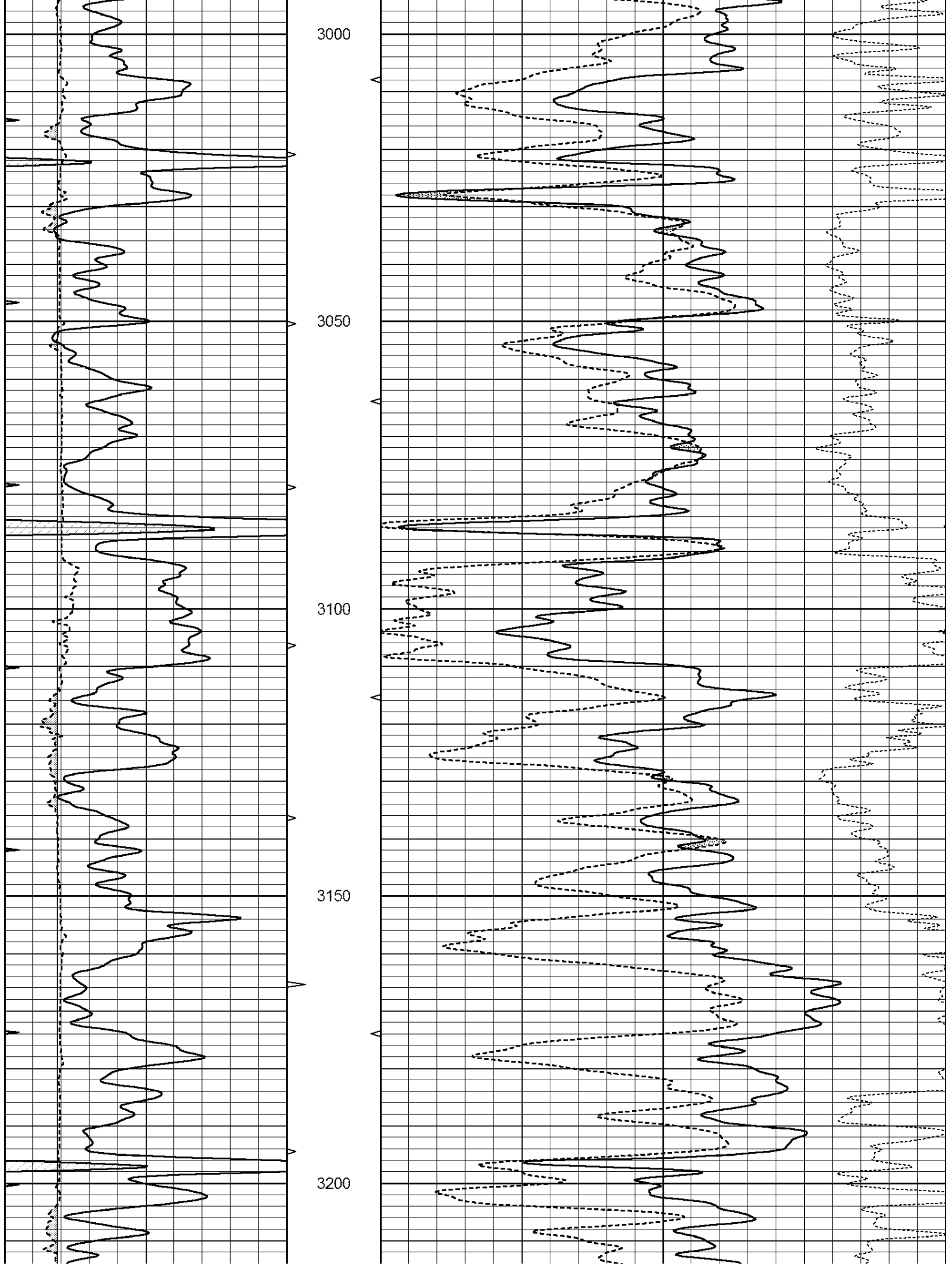
Comments

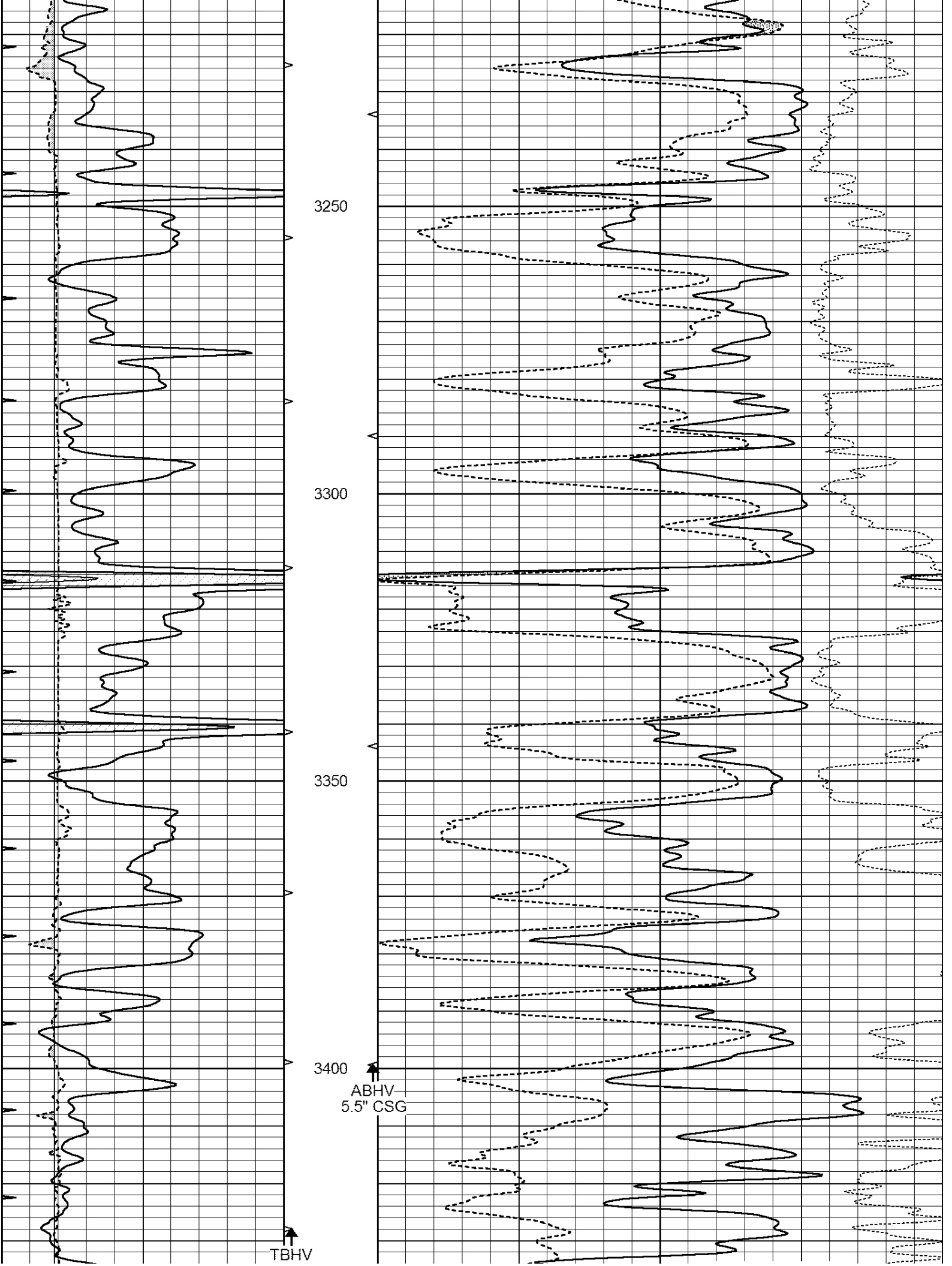
THANK YOU FOR USING NABORS HAYS, KANSAS (785) 628-6395
DIRECTIONS
PLAINVILLE, KS - 5 MILES NORTH TO RD S - 2 1/2 MILES EAST
SOUTH & EAST INTO

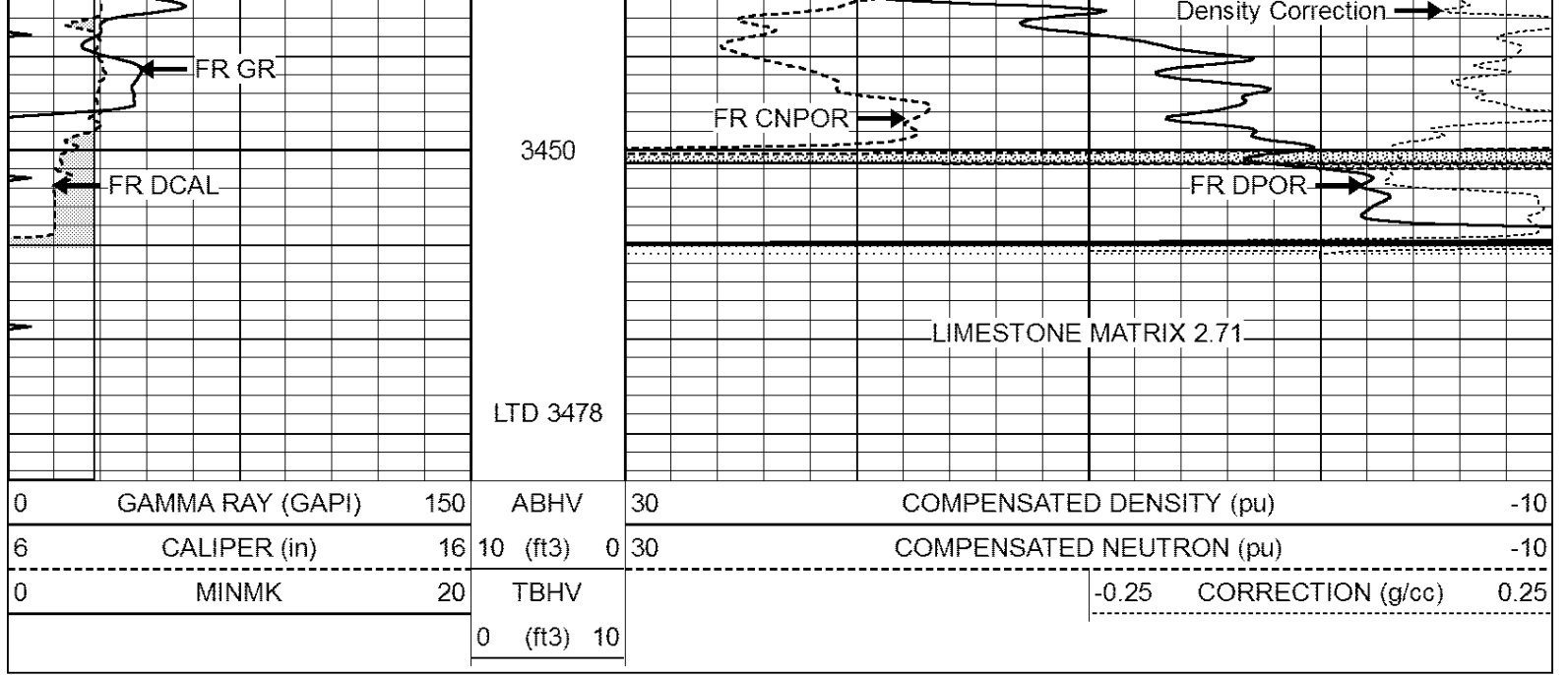
Database File: 009790ddn.db
Dataset Pathname: pass5.4.1
Presentation Format: den_neu
Dataset Creation: Fri Dec 14 18:59:14 2012
Charted by: Depth in Feet scaled 1:240

| | | | | | | |
|---|------------------|-----|----------|------|--------------------------|------|
| 0 | GAMMA RAY (GAPI) | 150 | ABHV | 30 | COMPENSATED DENSITY (pu) | -10 |
| 6 | CALIPER (in) | 16 | 10 (ft3) | 0 30 | COMPENSATED NEUTRON (pu) | -10 |
| 0 | MINMK | 20 | TBHV | | -0.25 CORRECTION (g/cc) | 0.25 |
| | | | 0 (ft3) | 10 | | |









| | | | | | | |
|---|------------------|-----|------------|----|--------------------------|------|
| 0 | GAMMA RAY (GAPI) | 150 | ABHV | 30 | COMPENSATED DENSITY (pu) | -10 |
| 6 | CALIPER (in) | 16 | 10 (ft3) 0 | 30 | COMPENSATED NEUTRON (pu) | -10 |
| 0 | MINMK | 20 | TBHV | | -0.25 CORRECTION (g/cc) | 0.25 |
| | | | 0 (ft3) 10 | | | |