

**COMPLETION  
& PRODUCTION  
SERVICES CO.**

**DUAL  
INDUCTION  
LOG**

Company TREK AEC, LLC  
Well DOPITA A #16  
Field DOPITA  
County ROOKS  
State KANSAS

Company TREK AEC, LLC  
Well DOPITA A #16  
Field DOPITA  
County ROOKS State KANSAS

Location: API # : 15-163-24094-0000  
670' FSL & 1785' FEL  
SW - NE - SW - SE  
SEC 31 TWP 8S RGE 17W  
Permanent Datum GROUND LEVEL Elevation 3165  
Log Measured From KELLY BUSHING 5' A.G.L.  
Drilling Measured From KELLY BUSHING  
Elevation  
CDL/CNL  
MEL  
K.B. 3170  
D.F. 3168  
G.L. 3165

Date	12/14/12		
Run Number	ONE		
Depth Driller	3480		
Depth Logger	3478		
Bottom Logged Interval	3476		
Top Log Interval	0		
Casing Driller	8 5/8" @ 262'		
Casing Logger			
Bit Size	7 7/8"		
Type Fluid in Hole	CHEMICAL MUD	CHLORIDES 3000 PPM	
Density / Viscosity	9.2 / 54		
pH / Fluid Loss	9.5 / 7.8		
Source of Sample	FLOWLINE		
Rm @ Meas. Temp	0.80 @ 70F		
Rmt @ Meas. Temp	0.60 @ 70F		
Rmc @ Meas. Temp	0.96 @ 70F		
Source of Rmf / Rmc	MEASUREMENT		
Rm @ BHT	0.50 @ 111F		
Time Circulation Stopped	2 HOURS		
Time Logger on Bottom			
Maximum Recorded Temperature	111F		
Equipment Number	4010		
Location	HAYS, KANSAS		
Recorded By	JEFF GRONEMEG		
Witnessed By	CURTIS COVEY		

<<< Fold Here >>>

All interpretations are opinions based on inferences from electrical or other measurements and we cannot and do not guarantee the accuracy or correctness of any interpretation, and we shall not, except in the case of gross or willful negligence on our part, be liable or responsible for any loss, costs, damages, or expenses incurred or sustained by anyone resulting from any interpretation made by any of our officers, agents or employees. These interpretations are also subject to our general terms and conditions set out in our current Price Schedule.

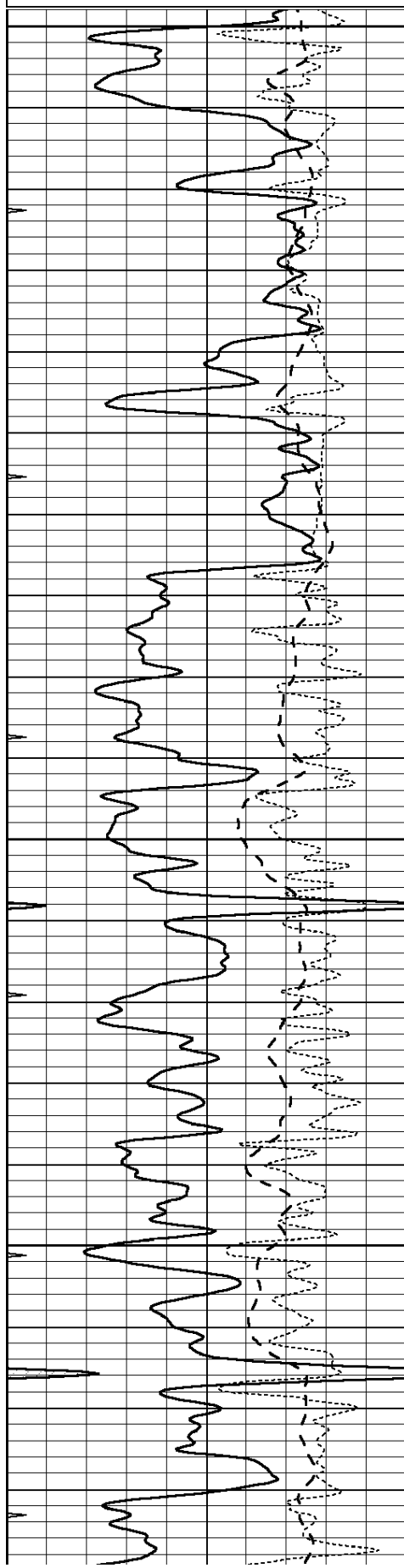
**Comments**

THANK YOU FOR USING NABORS HAYS, KANSAS (785) 628-6395  
DIRECTIONS  
PLAINVILLE, KS - 5 MILES NORTH TO RD S - 2 1/2 MILES EAST  
SOUTH & EAST INTO

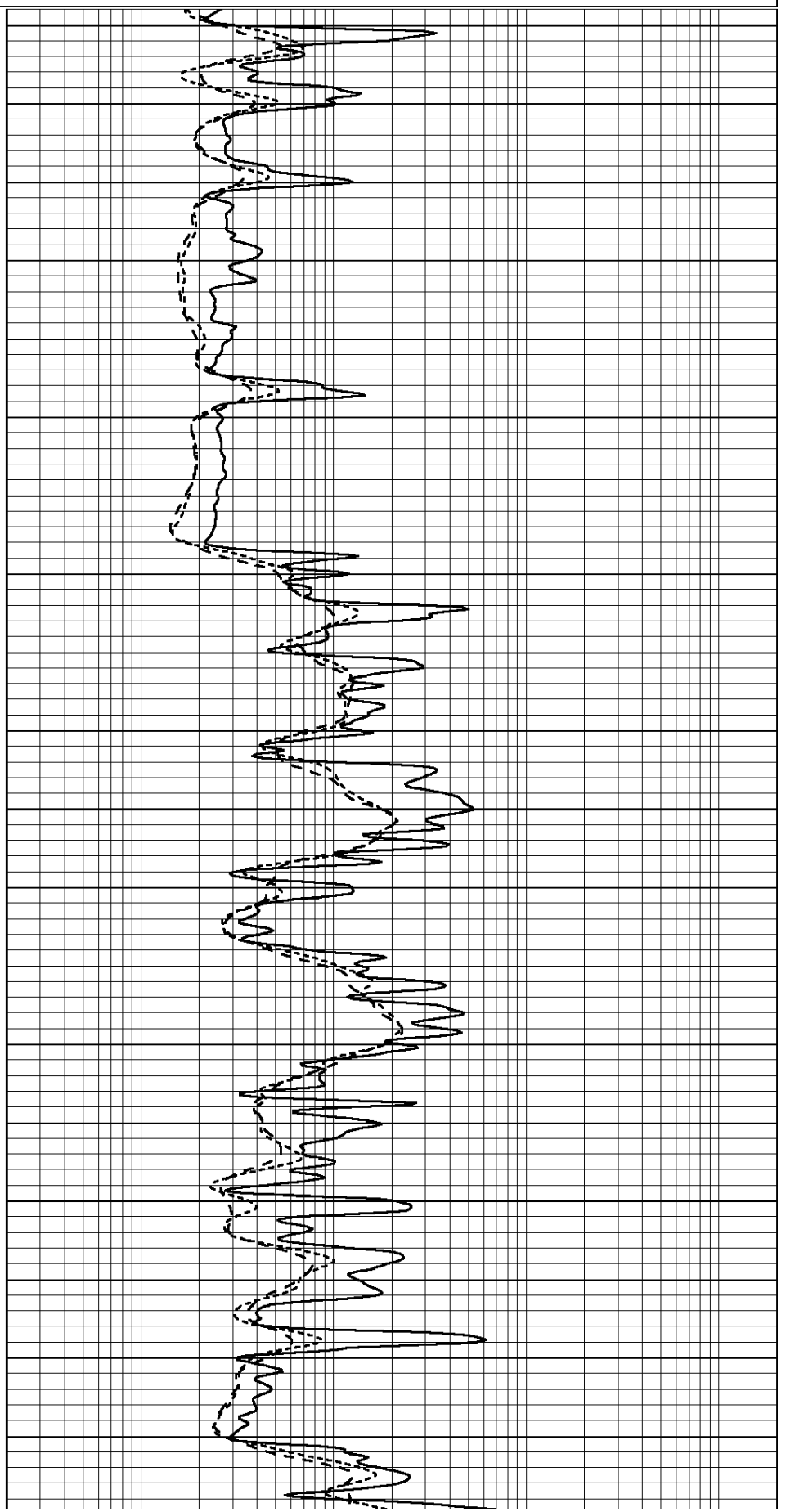
Database File: 009790ddn.db  
Dataset Pathname: pass5.4.1  
Presentation Format: \_dil  
Dataset Creation: Fri Dec 14 18:59:14 2012  
Charted by: Depth in Feet scaled 1:240

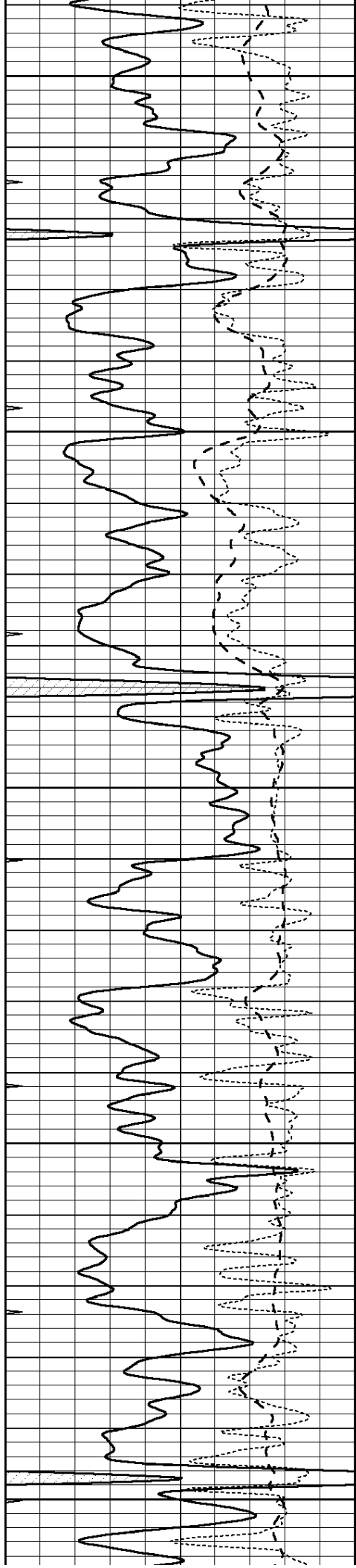
0	GAMMA RAY (GAPI)	150
-100	SP (mV)	100
-250	Rxo/Rt	50
0	MINMK	20

0.2	SHALLOW GUARD (Ohm-m)	2000
0.2	DEEP INDUCTION (Ohm-m)	2000
0.2	MEDIUM INDUCTION (Ohm-m)	2000



2800  
2850  
2900  
2950





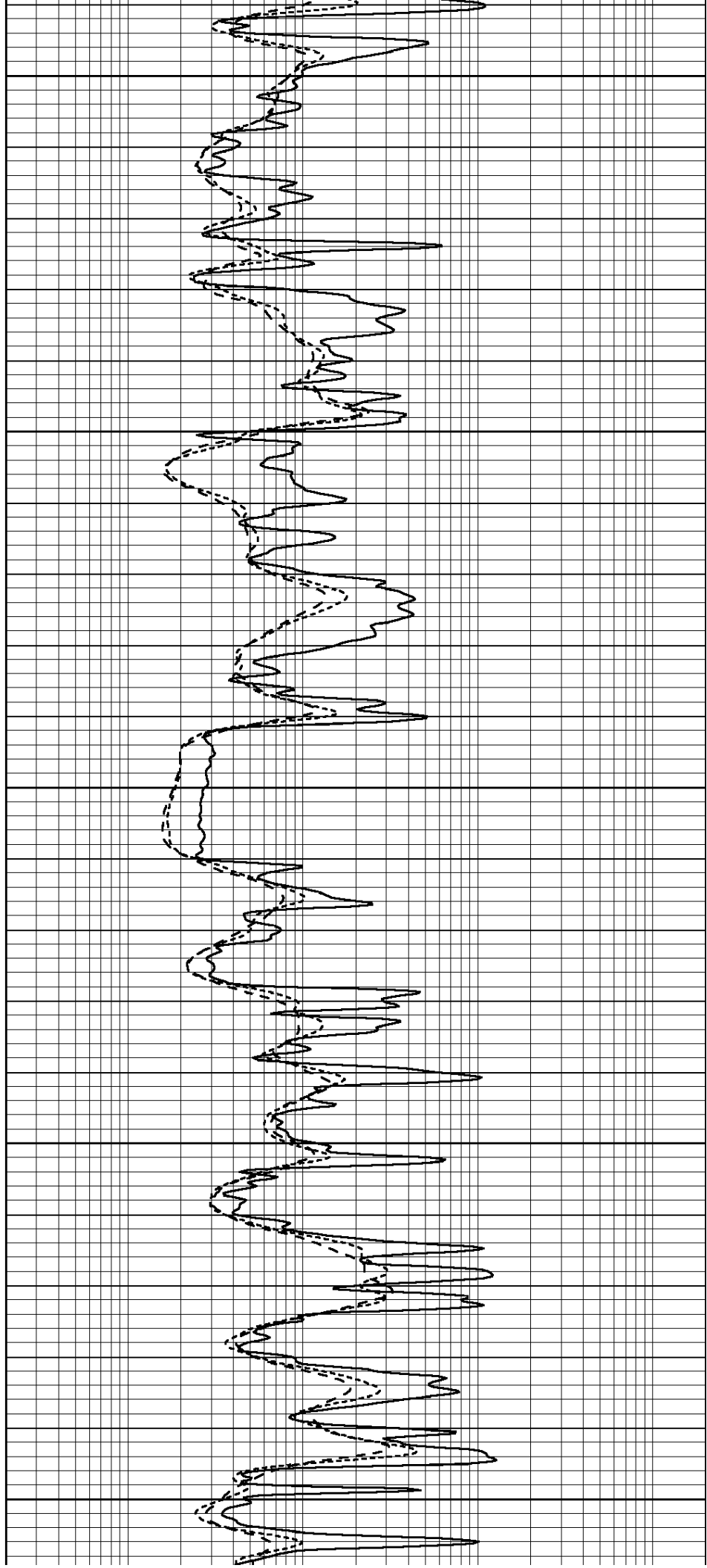
3000

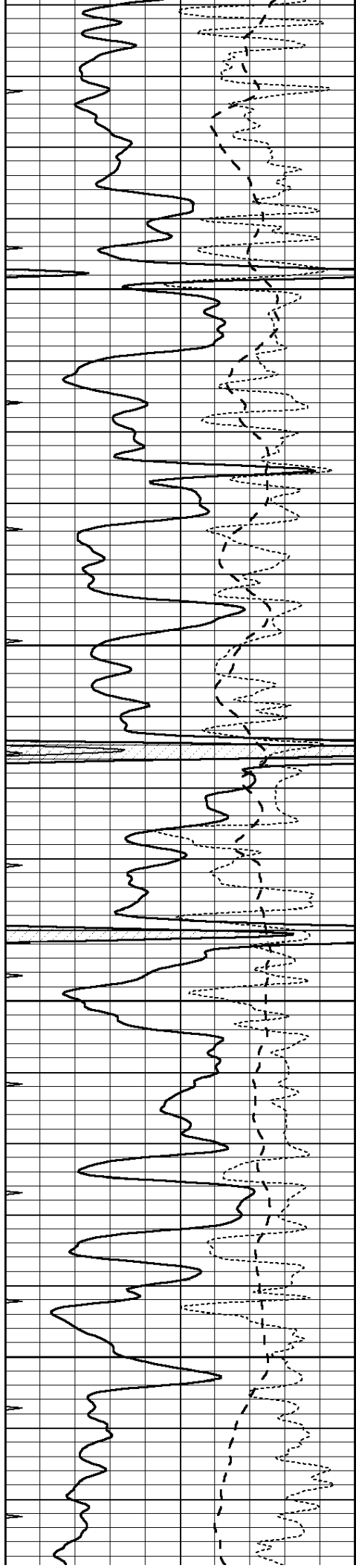
3050

3100

3150

3200





3250

3300

3350

3400

