



**COMPLETION
& PRODUCTION
SERVICES CO.**

**MICRO
LOG**

Company TREK AEC, LLC
Well DOPITA A #16
Field DOPITA
County ROOKS
State KANSAS

Company TREK AEC, LLC
Well DOPITA A #16
Field DOPITA
County ROOKS
State KANSAS

Location: API # : 15-163-24094-0000
670' FSL & 1785' FEL
SW - NE - SW - SE
SEC 31 TWP 8S RGE 17W
Permanent Datum GROUND LEVEL Elevation 3165
Log Measured From KELLY BUSHING 5' A.G.L.
Drilling Measured From KELLY BUSHING
Other Services
CDL/CNL
DIL
Elevation
K.B. 3170
D.F. 3168
G.L. 3165

Date	12/14/12		
Run Number	TWO		
Depth Driller	3480		
Depth Logger	3478		
Bottom Logged Interval	3476		
Top Log Interval	2800		
Casing Driller	8 5/8" @ 262'		
Casing Logger	260'		
Bit Size	7 7/8"		
Type Fluid in Hole	CHEMICAL MUD	CHLORIDES 3000 PPM	
Density / Viscosity	9.2 / 54		
pH / Fluid Loss	9.5 / 7.8		
Source of Sample	FLOWLINE		
Rm @ Meas. Temp	0.80 @ 70F		
Rmt @ Meas. Temp	0.60 @ 70F		
Rmc @ Meas. Temp	0.96 @ 70F		
Source of Rmf / Rmc	MEASUREMENT		
Rm @ BHT	0.50 @ 111F		
Time Circulation Stopped	2 HOURS		
Time Logger on Bottom			
Maximum Recorded Temperature	111F		
Equipment Number	4010		
Location	HAYS, KANSAS		
Recorded By	JEFF GRONEMEG		
Witnessed By	CURTIS COVEY		

<<< Fold Here >>>

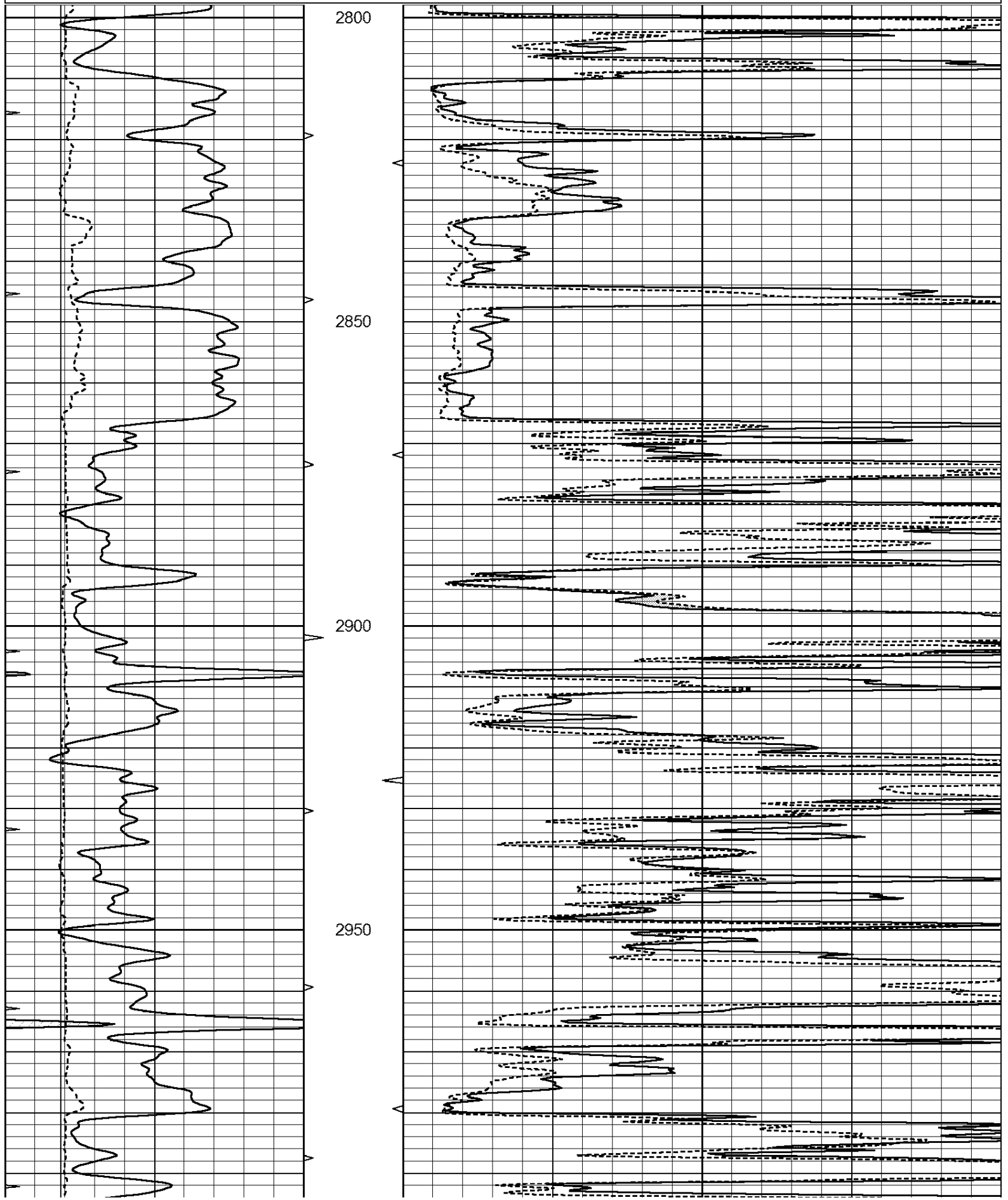
All interpretations are opinions based on inferences from electrical or other measurements and we cannot and do not guarantee the accuracy or correctness of any interpretation, and we shall not, except in the case of gross or willful negligence on our part, be liable or responsible for any loss, costs, damages, or expenses incurred or sustained by anyone resulting from any interpretation made by any of our officers, agents or employees. These interpretations are also subject to our general terms and conditions set out in our current Price Schedule.

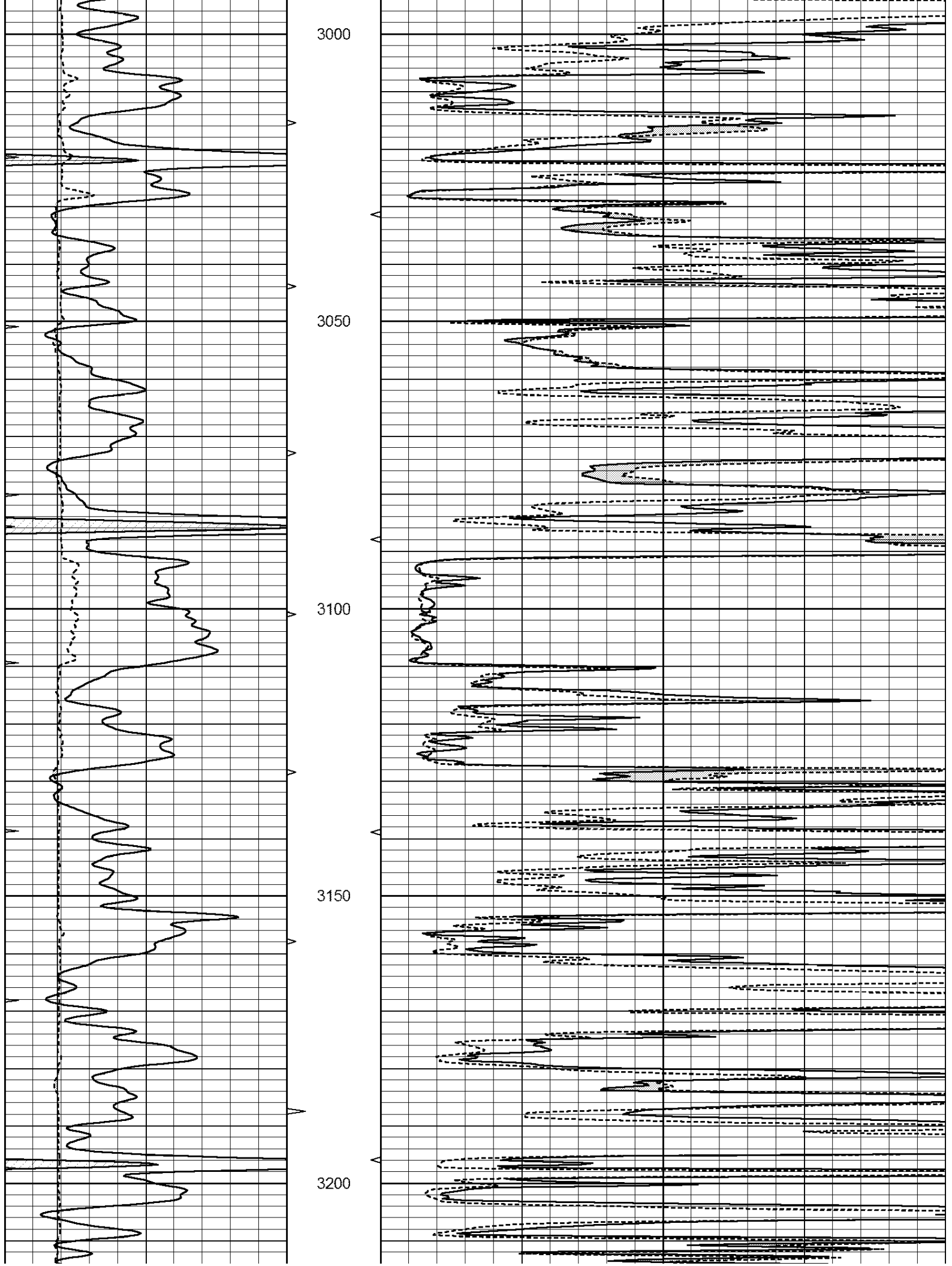
Comments

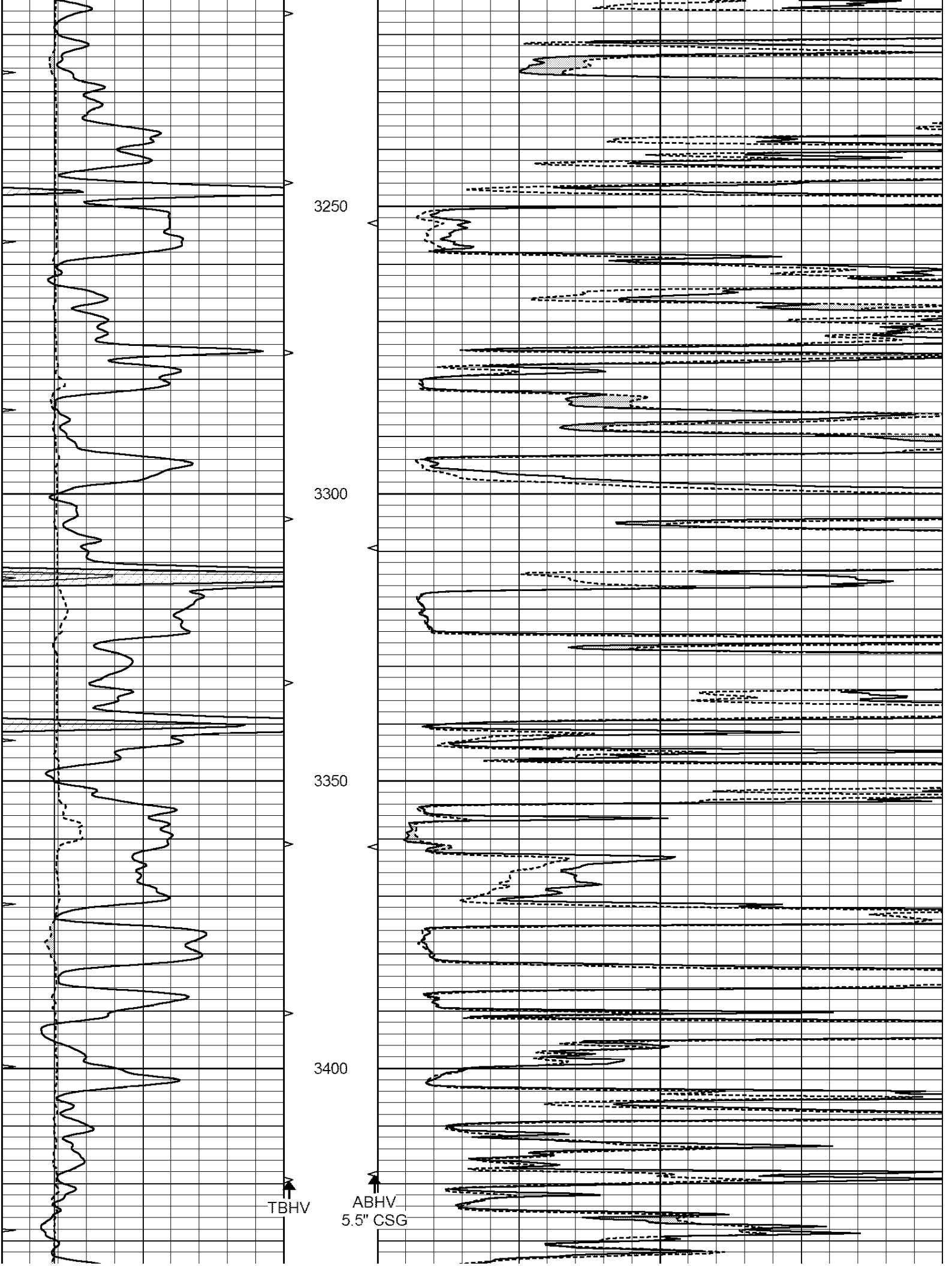
**THANK YOU FOR USING NABORS HAYS, KANSAS (785) 628-6395
DIRECTIONS
PLAINVILLE, KS - 5 MILES NORTH TO RD S - 2 1/2 MILES EAST
SOUTH & EAST INTO**

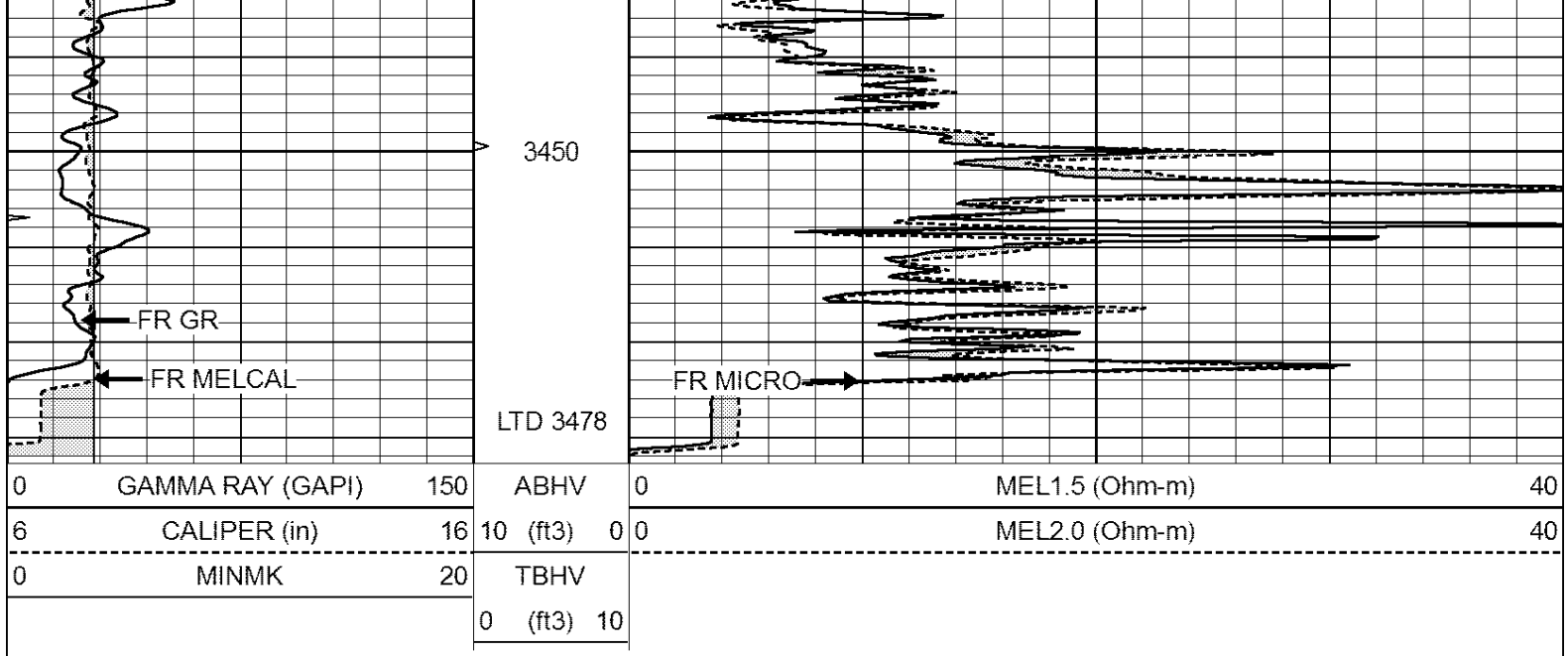
Database File: 009790ddn.db
Dataset Pathname: pass7.1
Presentation Format: _micro
Dataset Creation: Fri Dec 14 20:52:44 2012 by Calc Open-Cased 090629
Charted by: Depth in Feet scaled 1:240

0	GAMMA RAY (GAPI)	150	ABHV	0	MEL1.5 (Ohm-m)	40
6	CALIPER (in)	16	10 (ft3)	0 0	MEL2.0 (Ohm-m)	40
0	MINMK	20	TBHV			
			0 (ft3)	10		





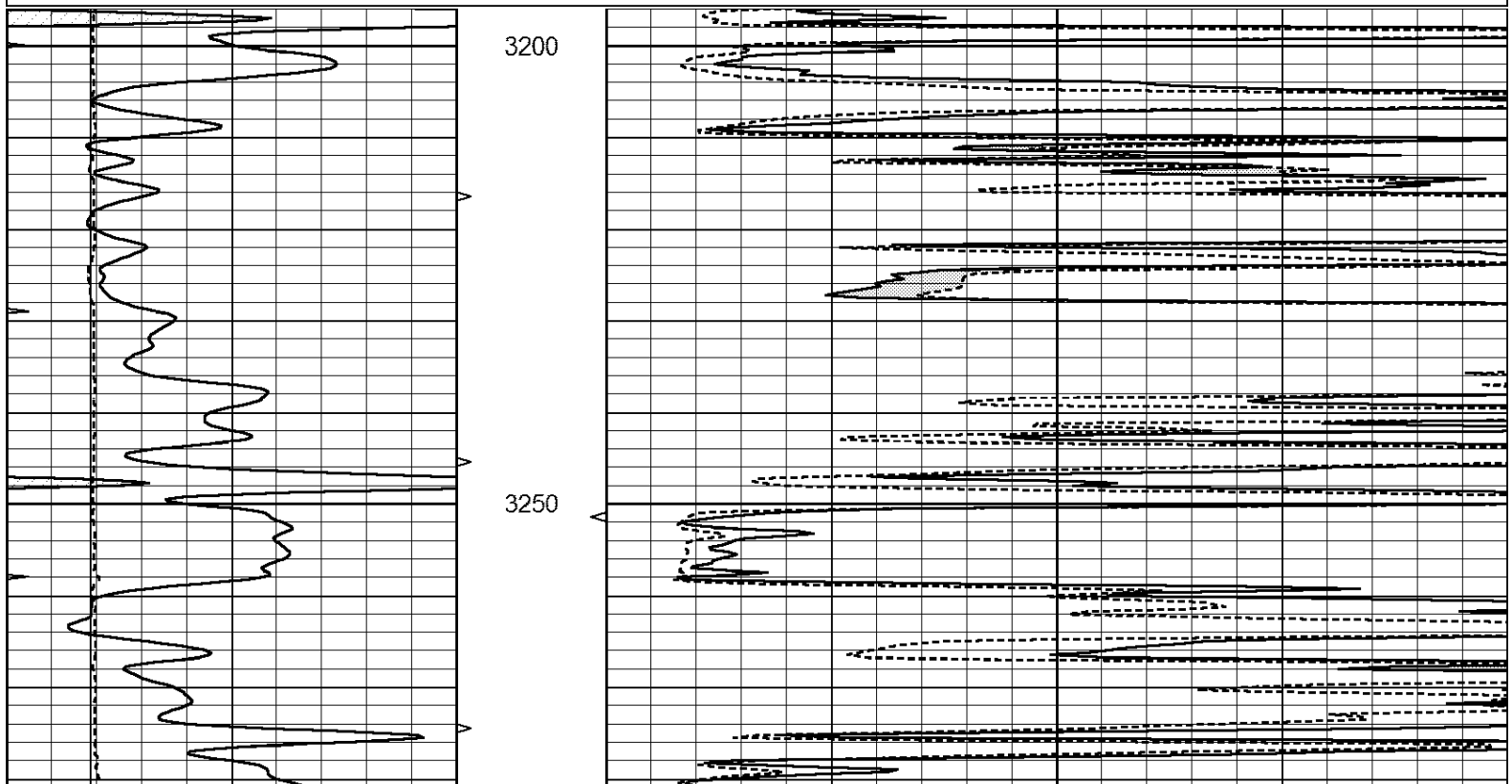


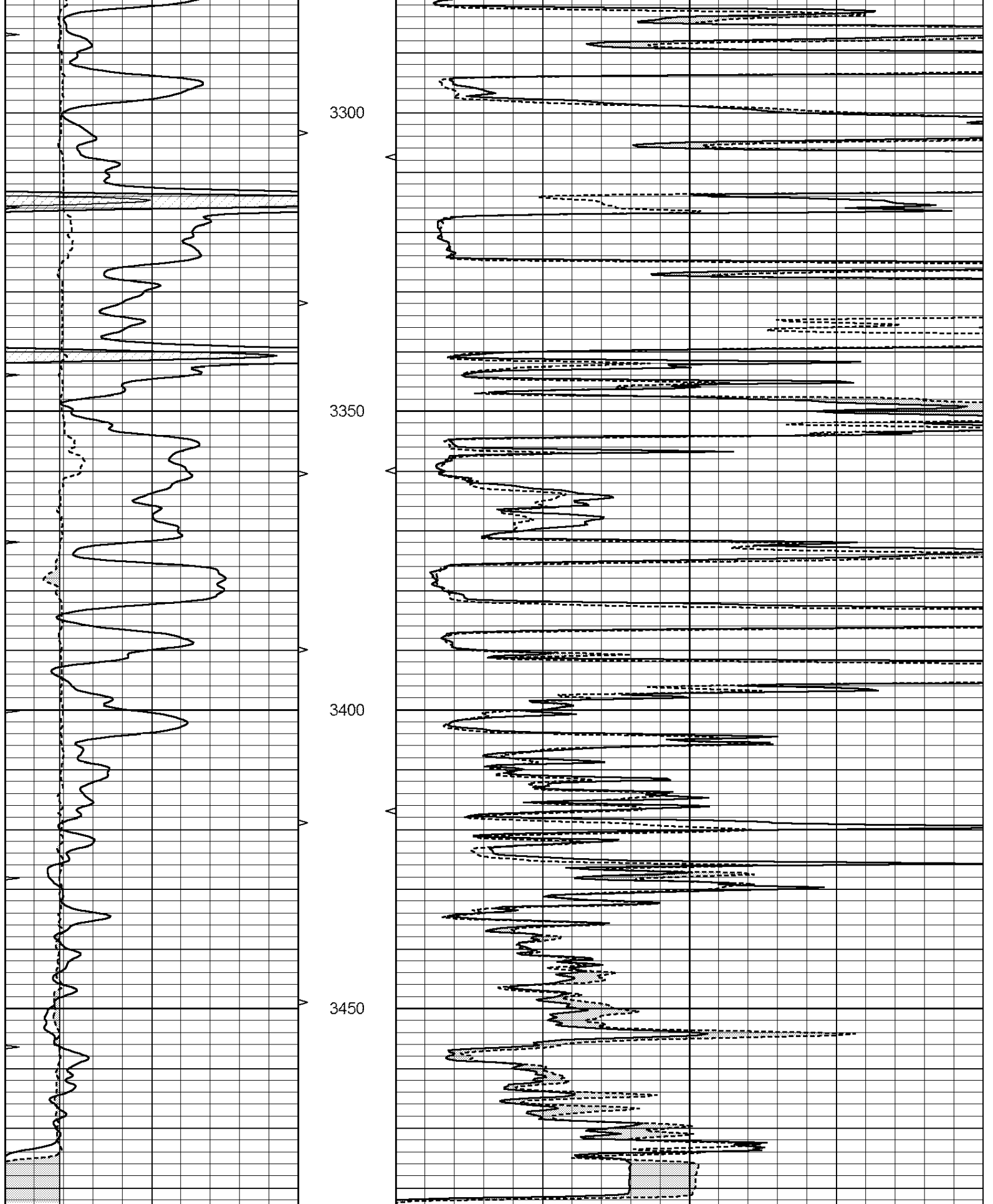


REPEAT SECTION

Database File: 009790ddn.db
 Dataset Pathname: pass6.3
 Presentation Format: _micro
 Dataset Creation: Fri Dec 14 20:28:23 2012 by Calc Open-Cased 090629
 Charted by: Depth in Feet scaled 1:240

0	GAMMA RAY (GAPI)	150	ABHV	0	MEL1.5 (Ohm-m)	40
6	CALIPER (in)	16	10 (ft3)	0	MEL2.0 (Ohm-m)	40
0	MINMK	20	TBHV			
			0 (ft3)	10		





0	GAMMA RAY (GAPI)	150	ABHV	0	MEL1.5 (Ohm-m)	40
6	CALIPER (in)	16	10 (ft3)	0 0	MEL2.0 (Ohm-m)	40
0	MINMK	20	TBHV			
			0 (ft3)	10		

Calibration Report

Database File: 009790ddn.db
 Dataset Pathname: pass7.1
 Dataset Creation: Fri Dec 14 20:52:44 2012 by Calc Open-Cased 090629

MICRO Calibration Report

Serial Number: MICRO6
 Tool Model: PROBE
 Performed: Fri Nov 02 22:18:25 2012

Caliper Calibration: Gain=5.542 Offset=-0.170

	Low Cal	High Cal
References	8.000	14.000
Readings	1.431	2.513

1.5" Calibration: Gain=45.075 Offset=-0.700

	Low Cal	High Cal
References	0.000	20.000
Readings	0.004	1.196

2" Calibration: Gain=40.041 Offset=0.000

	Low Cal	High Cal
References	0.000	20.000
Readings	0.006	0.913

Gamma Ray Calibration Report

Serial Number: #8
 Tool Model: OPEN
 Performed: Mon Jun 13 16:56:43 2011

Calibrator Value: 150.0 GAPI

Background Reading:	0.0	cps
Calibrator Reading:	175.0	cps

Sensitivity: 0.8171 GAPI/cps