



**MIDWEST SURVEYS**  
 LOGGING - PERFORATING - CONSULTING SERVICES  
 P.O. Box 68, Osawatomie, KS 68064  
 913 / 755 - 2128

**GAMMA RAY / NEUTRON / CCL**

File No. Company R.T. Enterprises Of Kansas, LLC.

Well Pearson No. - 43

Field Baldwin

County Douglas State Kansas

Location 2440' FSL & 2800' FEL  
 NE-NE-NE-SW

Other Services Perforate

Sec. 11 Twp. 15S Rge. 20E  
 Permian Basin Log Measured From Drilling Measured From

Date 02-18-2013

Run Number One

Depth Driller 980.0

Bottom Logged Interval 909.0

Top Log Interval 20.0

Fluid Level Full

Type Fluid Water

Density / Viscosity NA

Salinity - PPM Cl NA

Max Recorded Temp NA

Estimated Cement Top NA

Equipment No. Location 104 Osawatomie

Recorded By Gary Windisch

Missused By Lance Town

BORE-HOLE RECORD		CASING RECORD	
NO.	BIT	TO	FROM
One	9.875"	88.0	0.0
Two	5.625"	930.0	2.875"
			6.5#
			0.0
			946.40
			914.40

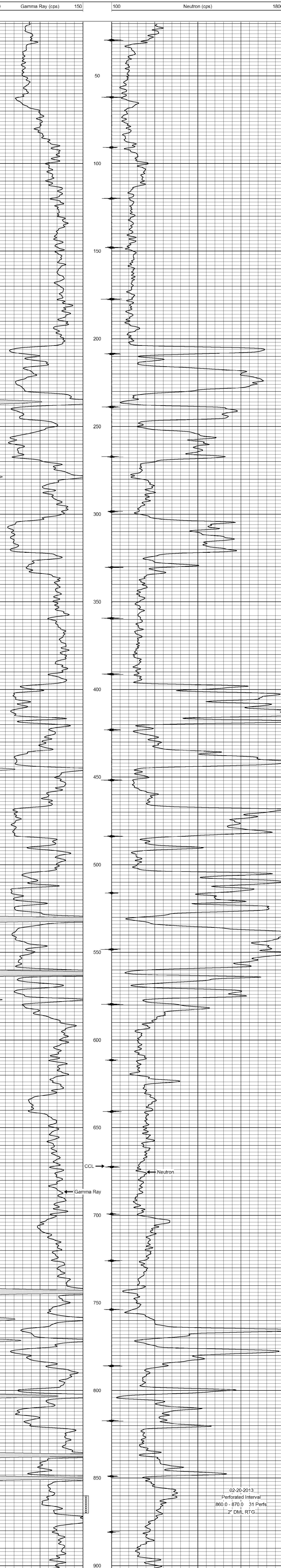
<<< Fold Here >>>

All interpretations are opinions based on inferences from electrical or other measurements and we cannot and do not guarantee the accuracy or correctness of any interpretation, and we shall not, except in the case of gross or willful negligence on our part, be liable or responsible for any loss, costs, damages, or expenses incurred or sustained by anyone resulting from any interpretation made by any of our officers, agents or employees. These interpretations are also subject to our general terms and conditions set out in our current Price Schedule.

Comments

Drilling Contractor :  
 Town Oilfield Services, Inc.

Database File: pearson43.cb  
 Dataset Pathname: pass1  
 Presentation Format: gr-n-ccl  
 Dataset Creation: Mon Feb 18 14:15:39 2013 by Log SCH 111116  
 Charted by: Depth in Feet scaled 1:240



02-20-2013  
 Perforated Interval  
 860.0 - 870.0 31 Perfs  
 2" DML RTG