



SUPERIOR
Hays,
Kansas

MICRO
LOG

Company MAI OIL OPERATIONS
Well BEISEL #1
Field BEISEL
County RUSSELL
State KANSAS

Company MAI OIL OPERATIONS
Well BEISEL #1
Field BEISEL
County RUSSELL State KANSAS

Location: 1580' FNL & 330' FWL
API # : 15-167-23803
SEC 15 TWP 14S RGE 12W
Permanent Datum GROUND LEVEL Elevation 1782
Log Measured From KELLY BUSHING & A.G.L.
Drilling Measured From KELLY BUSHING
Other Services CDL/CNL DIL
Elevation K.B. 1790 D.F. 1788 G.L. 1782

Date	6/10/12
Run Number	TWO
Depth Driller	3340
Depth Logger	3340
Bottom Logged Interval	3338
Top Log Interval	2150
Casing Driller	8 5/8" @ 344
Casing Logger	343
Bit Size	7 7/8
Type Fluid in Hole	CHEMICAL MUD
Density / Viscosity	9.5/50
pH / Fluid Loss	10.5/12.2
Source of Sample	FLOWLINE
Rim @ Meas. Temp	.55 @ 88F
Rmf @ Meas. Temp	.41 @ 88F
Rmc @ Meas. Temp	.66 @ 88F
Source of Rmf / Rmc	MEASURED
Rim @ BHT	.44 @ 110F
Time Circulation Stopped	2 HOURS
Time Logger on Bottom	
Maximum Recorded Temperature	110F
Equipment Number	680
Location	HAYS, KS.
Recorded By	JASON CAPPELLUCCI
Witnessed By	JOSH AUSTIN

<<< Fold Here >>>

All interpretations are opinions based on inferences from electrical or other measurements and we cannot and do not guarantee the accuracy or correctness of any interpretation, and we shall not, except in the case of gross or willful negligence on our part, be liable or responsible for any loss, costs, damages, or expenses incurred or sustained by anyone resulting from any interpretation made by any of our officers, agents or employees. These interpretations are also subject to our general terms and conditions set out in our current Price Schedule.

Comments

THANK YOU FOR USING SUPERIOR WELL SERVICE (785) 628-6395
DIRECTIONS
BUNKER HILL EXIT & OLD 40 - 2 E. - 1 S. - 3/4 E. - S. INTO

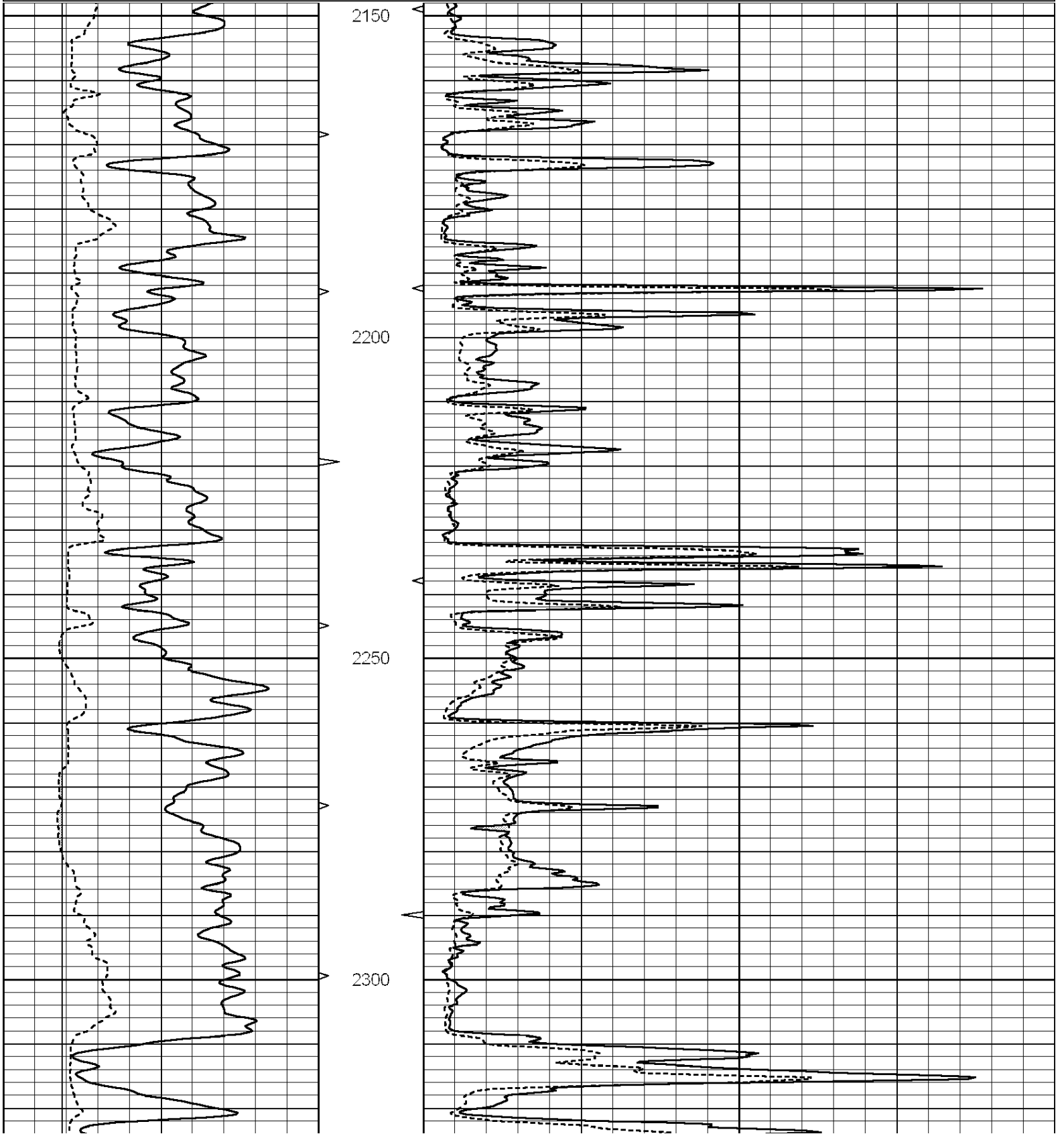


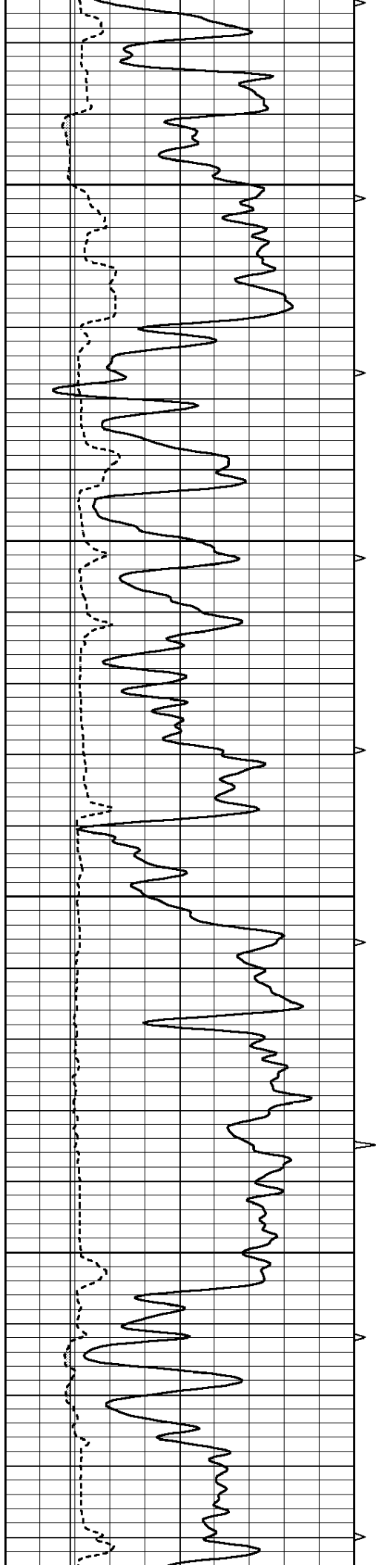
SUPERIOR
Hays,
Kansas

MAIN SECTION

Database File: 009219ddn.db
 Dataset Pathname: pass6.1
 Presentation Format: _micro
 Dataset Creation: Sun Jun 10 21:08:56 2012 by Calc Open-Cased 090629
 Charted by: Depth in Feet scaled 1:240

0	GAMMA RAY (GAPI)	150	ABHV	0	MEL1.5 (Ohm-m)	40
6	CALIPER (in)	16	10 (ft3)	0 0	MEL2.0 (Ohm-m)	40
			TBHV			
			0 (ft3)	10		



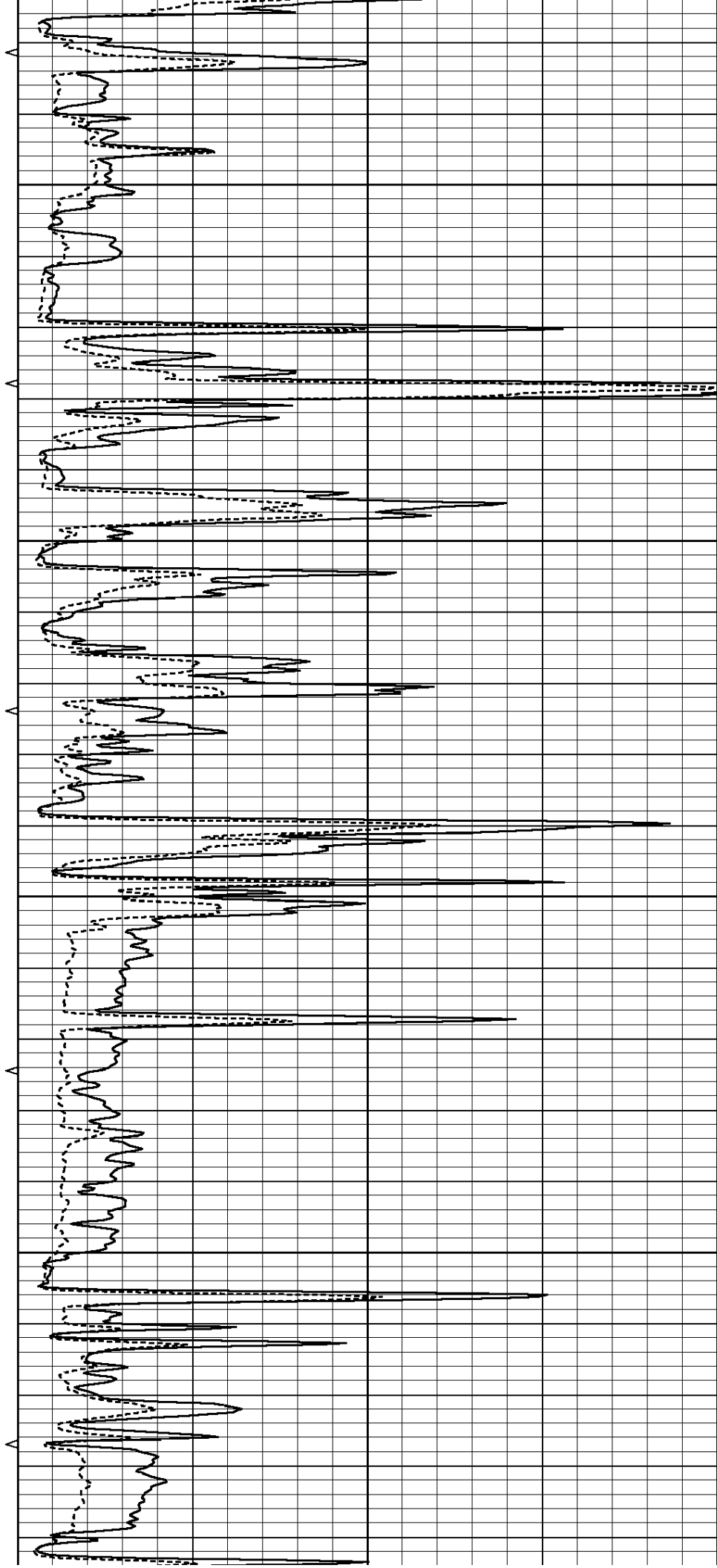


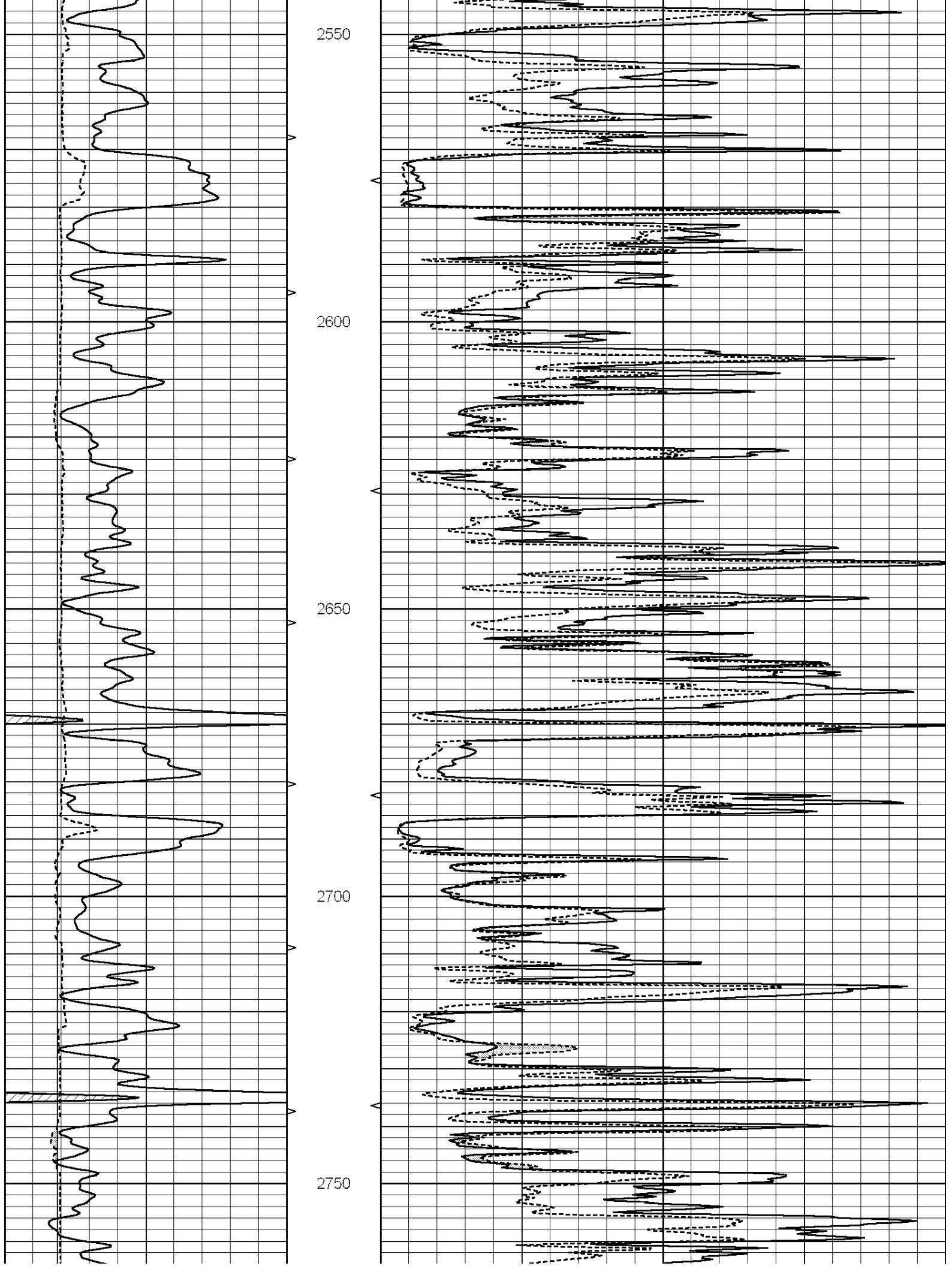
2350

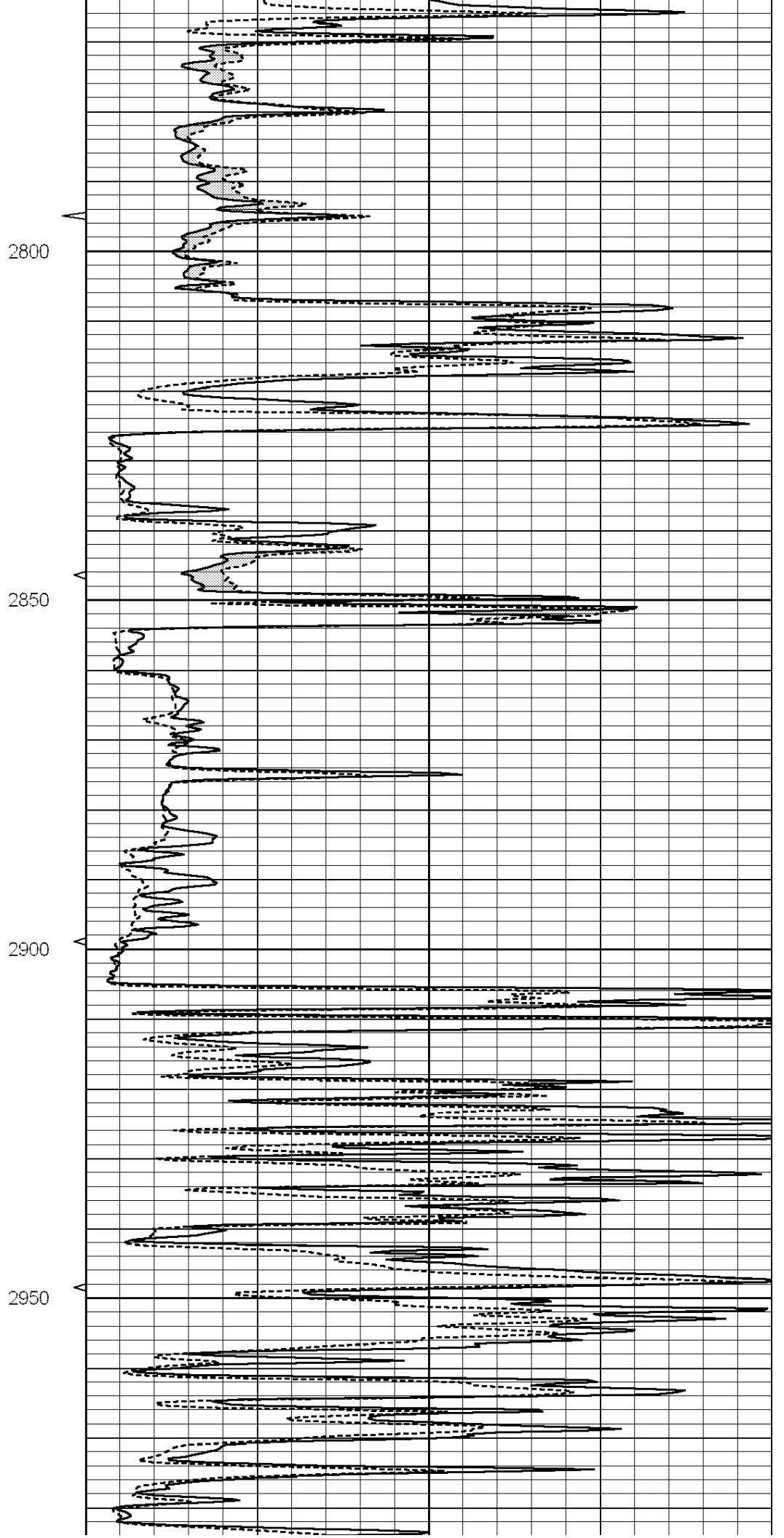
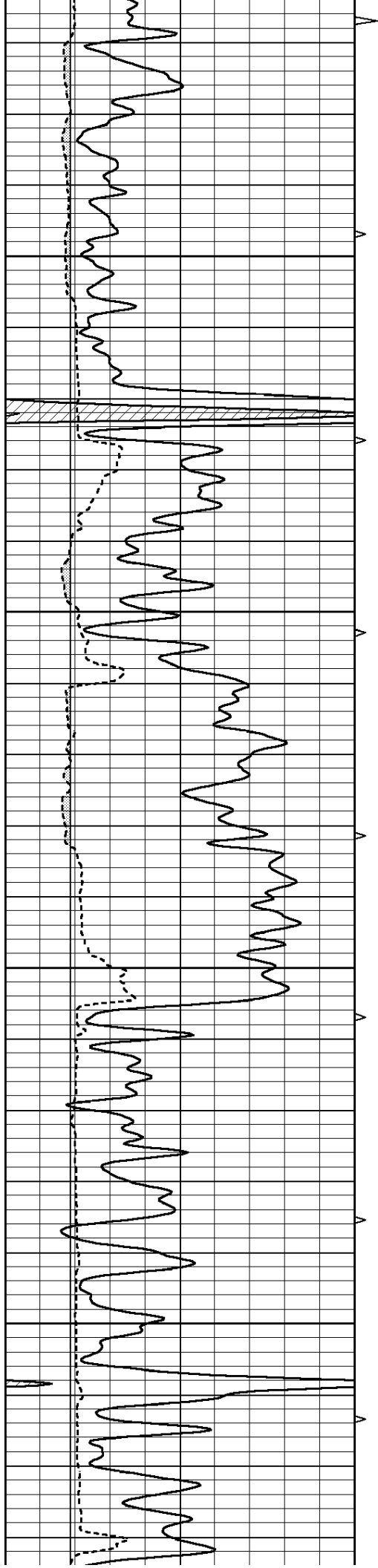
2400

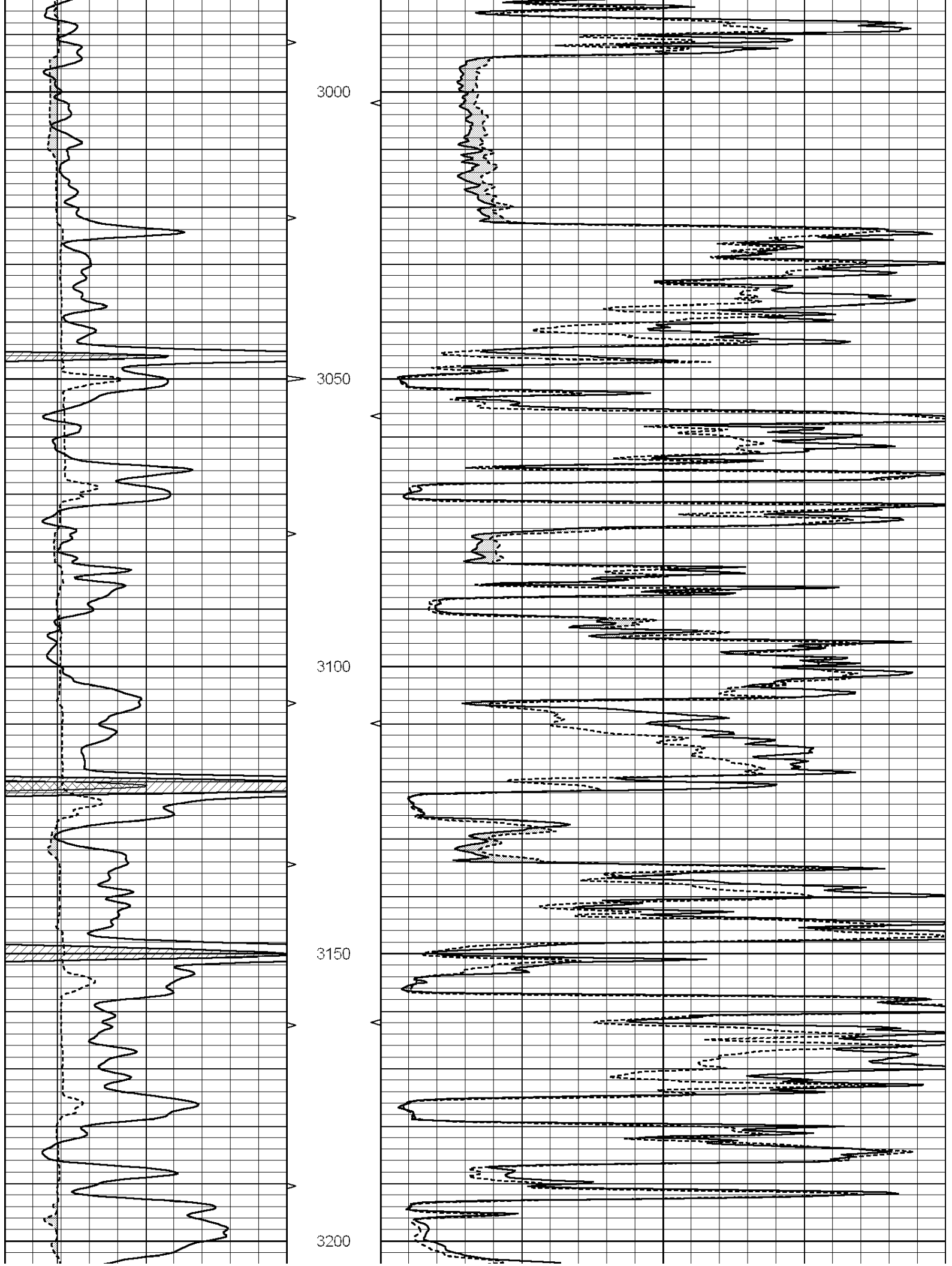
2450

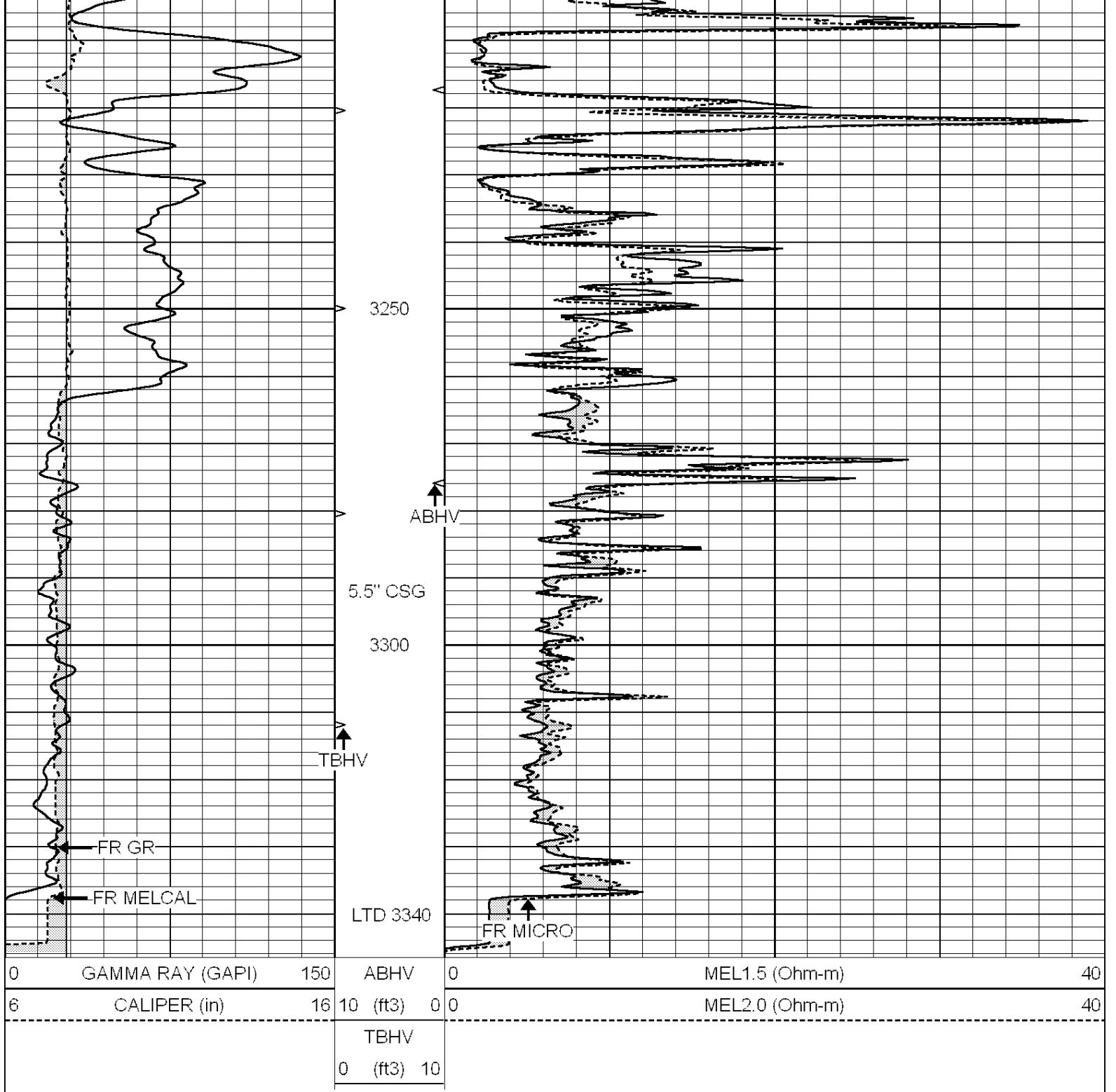
2500











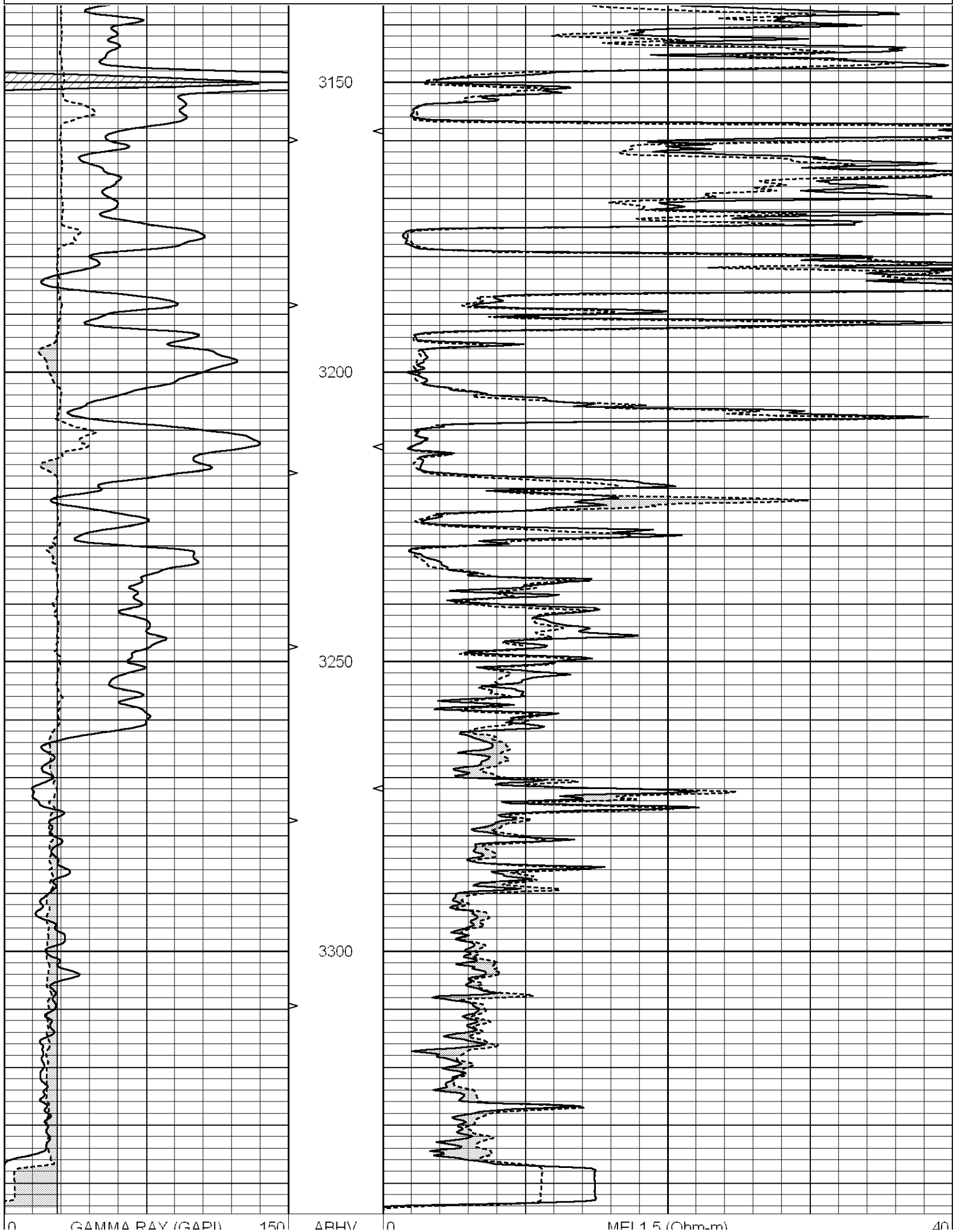
SUPERIOR
Hays,
Kansas

REPEAT SECTION

Database File: 009219ddn.db
 Dataset Pathname: pass5.1
 Presentation Format: _micro
 Dataset Creation: Sun Jun 10 21:08:31 2012 by Calc Open-Cased 090629
 Charted by: Depth in Feet scaled 1:240

0	GAMMA RAY (GAPI)	150	ABHV	0	MEL1.5 (Ohm-m)	40
6	CALIPER (in)	16	10 (ft3)	0	MEL2.0 (Ohm-m)	40
			TBHV			

DEPTH
0 (ft) 10



0 GAMMA RAY (GAPI) 150

DEPTH

0 MEI 1.5 (Ohm-m)

40

6	CALIPER (in)	16	TBHV	0	0	MEL2.0 (Ohm-m)	40
			TBHV	0	(ft3)	10	

Calibration Report

Database File: 009219ddn.db
Dataset Pathname: pass5.1
Dataset Creation: Sun Jun 10 21:08:31 2012 by Calc Open-Cased 090629

MICRO Calibration Report

Serial Number: MICRO6
Tool Model: PROBE
Performed: Wed May 23 05:16:50 2012

Caliper Calibration: Gain=6.253 Offset=-1.308

	Low Cal	High Cal
References	5.800	13.000
Readings	1.178	2.330

1.5" Calibration: Gain=30.075 Offset=-0.200

	Low Cal	High Cal
References	0.000	20.000
Readings	0.004	1.196

2" Calibration: Gain=28.041 Offset=0.000

	Low Cal	High Cal
References	0.000	20.000
Readings	0.006	0.913

Gamma Ray Calibration Report

Serial Number: #8
Tool Model: OPEN
Performed: Mon Jun 13 16:56:43 2011

Calibrator Value: 150.0 GAPI

Background Reading:	0.0	cps
Calibrator Reading:	175.0	cps

Sensitivity: 0.8371 GAPI/cps